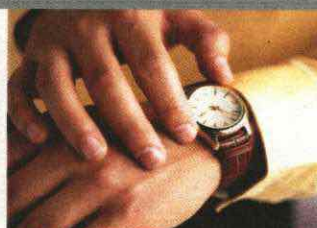


PORT SHOPPING INFORMATION



FLORENCE

SHOPPING ASHORE

Meet Your Port Shopping Guide

Watch channel 9 for insider tips on how to spend your free time, before or after your tour and where to find the best local goods ashore! Stop by the Port Shopping desk for more information to help create the best experience for you and your family!



Look for the All Ashore logo for your recommended and guaranteed stores!

SHOPPING INFO ASHORE

Watch Channel

9

Tune in for the latest shoreside shopping information from your stateroom television.

FLORENCE OVERVIEW

Founded by the Romans in the first century B.C., Florence began its rebirth after the decadence of the barbaric ages, in the Carolingian period, and reached its highest pinnacles of civilization between the 11th and 15th centuries, as a free city, balancing the authority of the Emperors with that of the Popes, overcoming the unfortunate internal dispute between Guelfs and Ghibellines.

In the 15th century, it came under the rule of the Medici family, who later became the Grand Dukes of Tuscany. This in fact was the period when the city was at the height of its glory in art and culture, in politics and economic power. The Grand Duchy of the Medicis was succeeded, in the 18th century, by that of the House of Lorraine, when in 1860 Tuscany became part of the Kingdom of Italy of which Florence was the capital from 1865 to 1871. In this century, the city has once more taken up its role as an important centre for culture and the arts.

Capital of the region of Tuscany, Florence has a population of around half a million inhabitants, spreads on the banks of the Arno, between the Adriatic and the Tyrrhenian seas, almost in the middle of the Italian peninsula. It is a city which bustles with industry and craft, commerce and culture, art and science. Being on the main national railway lines, it is easily accessible from most important places both in Italy and abroad. The climate is temperate but rather variable, with breezy winters and hot summers. The Chianti area, between Florence and Siena, is one of the most beautiful countryside's in Italy and a famous wine production area.

Shopping:

Center of Florence is pedestrianized which makes shopping for gold, leather and souvenirs under the famous churches even more pleasurable.

Docking/Anchorage:

The ship docks in Livorno which is approximately 1½ hours drive from Florence and about 20 minutes from Pisa.

Port Adventures:

Check your ticket for the correct meeting time and location for your tour. Your Port Adventures Team will direct you to transportation.

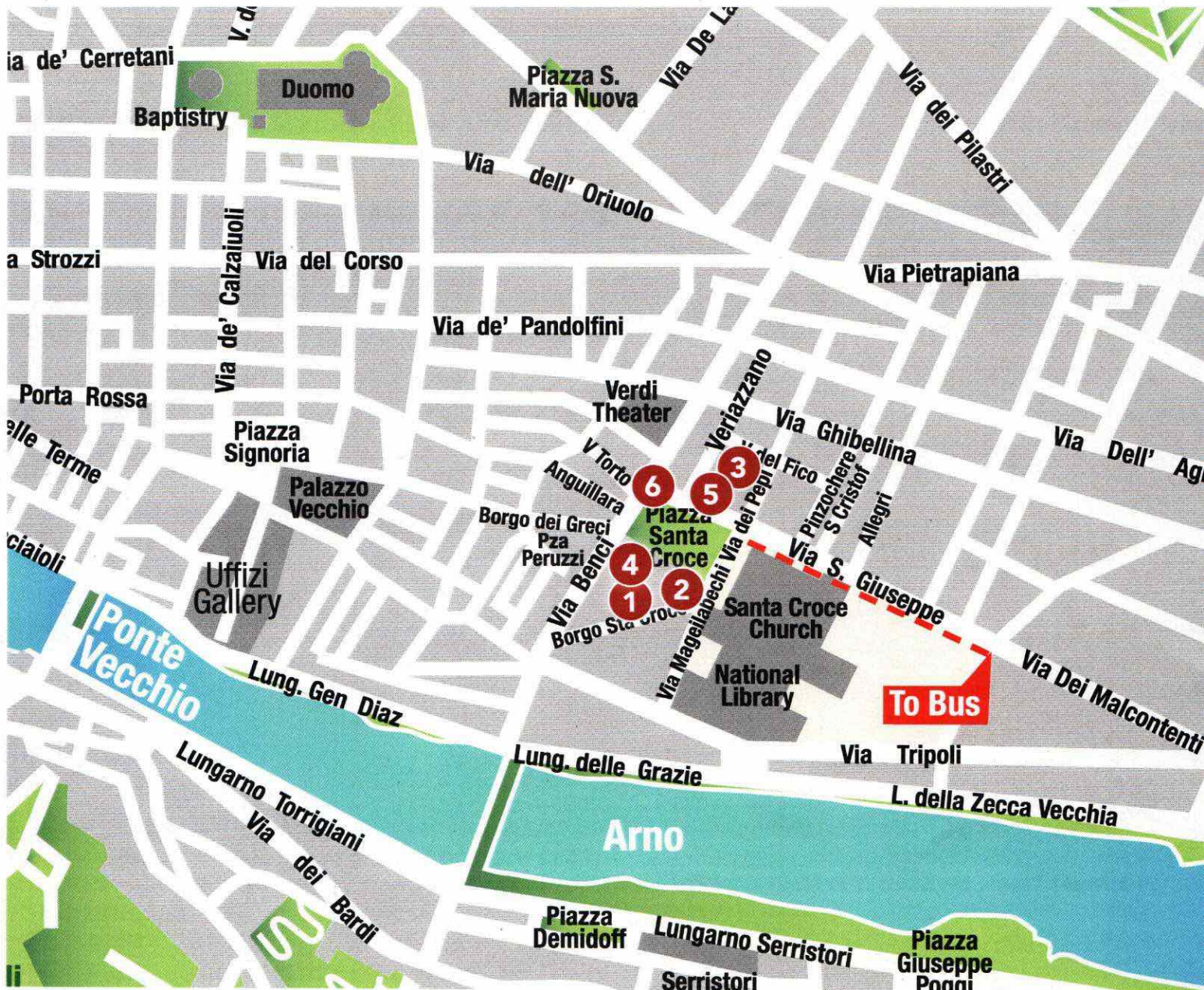
Take Ashore

- ✓ This Map
- ✓ Passport for adults and children & Key to the World Card
- ✓ Cash & Credit Cards
- ✓ VIP Cards

ONLY THE STORES LISTED ON THIS MAP

Florence

STORES LOCATED IN FLORENCE: The bus is a 10 minutes walk from the Piazza Santa Croce. Follow your guide and the dotted line to enter into downtown Florence.



© PPI 2018 Florence Disney 06/21/2018

Livorno

Pier Location: Alto Fondale 46/47

Please verify pier location prior to departing the ship.



PROVIDE A 60-DAY BUYER'S GUARANTEE.

1 THE GOLD MARKET

The Latest Designs In 18kt Italian Gold Jewelry

- Florence's best 18kt gold and sterling silver collection
- Largest range of authentic Roman coin jewelry, including collector's items
- Stockists for Chimento, black gold, yellow gold, rose gold, chocolate and white gold
- Great selection of cameo, coral jewelry and women's and men's jewelry
- Ask to see our expandable ring or arthritis ring, fits any finger
- Come in and see our 50% off sale section and try our silver scarf and receive 30% off
- 25% discount for cruise ship passengers and immediate tax refund for tourists

2 THE GOLD CORNER

Handmade 18kt Gold Italian Jewelry

- Located in one of Florence's most beautiful piazzas, Santa Croce
- Extensive selection of authentic, handcrafted 18kt gold Italian jewelry
- Exclusive designers: Fope, Nanis, Meli, Rosato, Pippo Perez and more
- Exclusive brand: Kabana
- Professional, friendly and multi-lingual staff
- Come and enjoy a 20% discount and tax free.

3 ITALIAN LOVES

Italian Wines, Olive Oils and Balsamic Vinegars

- Complimentary Chianti Classico and Brunello Di Montalcino wine tasting
- Balsamic vinegar, truffle, limoncello and extra virgin olive oil tasting
- Featuring authentic handmade Florentine ceramics
- Professional, friendly and multi-lingual staff
- Best shipping rates in town
- Easy to find: facing the church of Santa Croce, turn left at the Dante statue in via de Pepi and look for the green flag just 50 feet away

4 MISURI

Historical Leather Establishment

- Located in the Antellesi Palace, just steps away from the church of Santa Croce
- We use only the finest quality leather for our handcrafted jackets, bags and accessories
- Enjoy a wide variety of Italian brands
- Ask our friendly, multilingual staff about the different leathers and finishing techniques
- Guaranteed worldwide shipping
- Up to 20% discount and tax free for Disney cruise guests

5 LA GALLERIA MICHELANGELO

Tuscan Leather and 18kt Gold

- Watch leather artisans create unique pieces in our art workshop
- Custom order: jewelry cases, picture frames and desk tops in leather
- Designer fashion collection: handbags, jackets, luggage and shoes
- Multilingual staff, international warranty and tax refund
- Free one hour alterations and complimentary 24kt gold initials

6 CASA TOSCANA

Traditional Tuscan Cuisine

- Local wine, cheese and salami plates with assorted crostini
- Fresh pasta dishes and salads
- Come and try our famous lasagna made fresh daily
- Dine alfresco with a view of Santa Croce

AT A GLANCE

Capital:

Florence is the capital city of the region of Tuscany

Location:

Center of Italy

Population:

374,151

Language:

Italian

Currency:

Euro

Banking:

Open from Monday - Friday 8:30am - 1:30pm
ATM machines are available throughout Florence and at every bank

Post Office:

The main post office in Florence at Piazza Davanzati is open Monday - Saturday 7:00am - 1:30pm.

Transportation:

Taxis are available outside the pier in Livorno.

Shopping Hours:

Shops are open 9:00am - 1:00pm and 3:30pm - 8:00pm during the week. Shops are generally closed Saturday afternoons and Monday mornings. However the recommended shops will be open all day when the ship is in port.

In Case of Emergency:

Port Agent: Hugo Trumpy

Viale Italia, 183, Livorno 57127 Italy

Tel: 39-0586-814758

Agent: Mr. Claudio Perone

Cell: 39-335-219602

Email: cp.livorno@hugotrumpy.it

Browse your Destination Guide (found in your stateroom) for more details.

Buyer's Guarantee

Shop with confidence at each of the recommended stores. All stores listed on the map have paid a promotional fee and given Disney Cruise Line guests a Buyer's Guarantee valid for 60 days after purchase. This guarantee is valid for repair or exchange. Please note the following conditions that apply to the guarantee: Guest negligence or buyer's regret is excluded. Only appraisals from independent, accredited graduate gemologists not affiliated with any retail jeweler will be considered. Electronics and watches requiring service must be returned by the consumer to the respective manufacturer. All purchases, including fragile items, must be checked before leaving the store. Do not mail merchandise without prior authorization. Guests are responsible for postage and appraisal costs. PPI Group, 6261 NW 6th Way, Suite 100, Ft. Lauderdale, FL 33309, Customer Service: 1.888.774.4768 or 954.377.7777, email: Service@ppigroup.com

THE GOLD CORNER FIRENZE

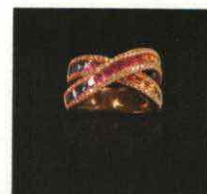
In the heart of Florence you can find 18 KT gold & silver jewelry in one of Italy's most beautiful squares, Santa Croce.

Exclusive designers such as Fope, Nanis, Meli Gioielli, Roberto Demeglio, Mosaico & Nomination. New diamond cut collection including black & chocolate gold.

Fope stretchy gold bracelet, no clasp & springs in 18 KT gold.



Piazza Santa Croce, 15R



THE
GOLD
MARKET
Italy



Chocolate gold • Black gold • Etruscan collection • Florentine workmanship • Diamond cut
Chimento • Mosaic • Roman Coins

TAX refund in store

Piazza Santa Croce 20R 055 242983 • www.the-gold-market.com

ONE-STOP SHOPPING EXPERIENCE
LUXURY HANDCRAFTED LEATHER & 18K GOLD



MISURI
FIRENZE

PIAZZA SANTA CROCE 20/R • +39 055.240.995 • WWW.LEATHERGUILD.IT

Travel Safety Tips

As in any tourist destination, you will want to take some basic precautions to make the most of your time ashore.

- Be aware of your surroundings, especially in crowded areas.
- Avoid wandering from the main shopping and tourist areas into unfamiliar territory. If venturing out independently, have a plan, use only licensed taxi operators.
- Leave your valuables in your stateroom safe and avoid carrying large amounts of cash. Exercise caution when using ATMs.
- Cameras and handbags should be carried close to your body or concealed out of sight. People who carry handbags or backpacks are particularly vulnerable to purse snatchers on scooters.
- When going ashore, each adult and child is required to carry a passport or other government-issued photo ID. – Note: Some ports may require Guests to carry passports ashore.
- In general, use the same level of precaution you would use in any tourist destination.

Please remember that while in a foreign country, you are subject to its laws.

VAT Refund Program Value Added Tax (VAT) is a tax refund program in which non-European Union citizens may be entitled to reclaim a portion or all of the tax paid for items purchased in participating stores. Each store's participation in the VAT refund program is discretionary. In most cases, VAT is already added to the purchase price. Please note that regulations and conditions governing the refund of VAT are subject to change. It is the responsibility of the cruise ship Guest to inquire about a store's VAT refund program participation and if their purchase qualifies. For information about participating stores listed on this map, please see your Port Shopping Guide.