

VOYAGE NAVIGATOR

MONDAY
JULY 9, 2018

TO

WEDNESDAY
JULY 18, 2018

CRUISE HIGHLIGHTS

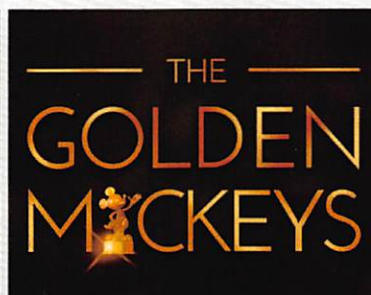
MONDAY VANCOUVER

Port Departure: 5:00 pm
All Aboard: 4:00 pm
Attire: Cruise Casual



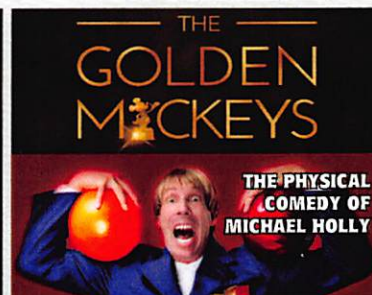
TUESDAY

DAY AT SEA
Attire: Formal



WEDNESDAY KETCHIKAN

All Ashore: 7:00 am
All Aboard: 4:00 pm
Attire: Cruise Casual



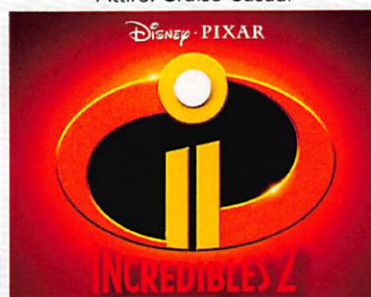
THURSDAY

ICY STRAIT POINT
All Ashore: 9:00 am
All Aboard: 6:00 pm
Attire: Cruise Casual



FRIDAY

JUNEAU
All Ashore: 6:45 am
All Aboard: 4:45 pm
Attire: Cruise Casual



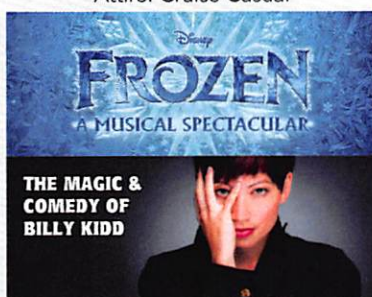
SATURDAY

HUBBARD GLACIER
Attire: Cruise Casual



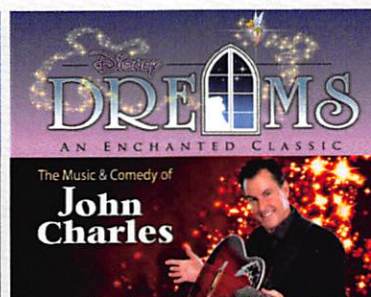
SUNDAY SKAGWAY

All Ashore: 8:00 am
All Aboard: 8:45 pm
Attire: Cruise Casual



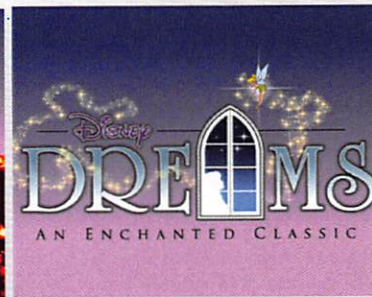
MONDAY

TRACY ARM
Attire: Semi Formal



TUESDAY

DAY AT SEA
Attire: Cruise Casual



Subject to change.

WELCOME ABOARD!

YOUR STATEROOM & LUGGAGE

Staterooms will be ready at 1:30 pm. To allow your Stateroom Host/ess time to prepare your room, please do not remove the blue stanchion straps. Stateroom hosts will deliver luggage throughout the day until 5:30 pm.

STATEROOMS WITH BUNK BEDS

Bunk beds are recessed into the ceiling and will be prepared during evening turndown service by your Stateroom Host/ess.

STATEROOM SAFE

Each stateroom is equipped with a secured storage safe. Instructions for use are located on the safe.

TO CHANGE DINING ASSIGNMENT

Requests for different seating times will be taken today: 12:30 pm - 3:30 pm; Book in Promenade Lounge, Deck 3, Aft or please dial 7-10891 and leave a voicemail.

PALO DINING RESERVATIONS

Reservations are required and will be taken on a first come basis today: 12:30 pm - 3:30 pm; Book in Promenade Lounge, Deck 3, Aft or please dial 7-6843 and leave a voicemail.

DINNER

5:45 pm - First seating 8:15 pm - Second seating AP = Animator's Palate, Deck 4, Aft TR = Triton's, Deck 3, Midship TP = Tiana's Place, Deck 3, Aft
Please check your Key To The World Card for details of your dining rotation, and bring them to your specific dining location. There is no need to wait in line prior to dinner.
Dining Rooms open at designated seating times and your table is reserved each night of your cruise.

IMPORTANT NUMBERS

Fire/Security: 7-3001

Medical Emergency: 7-3000

Health Center: 7-1927

ADULT ACTIVITY HIGHLIGHTS



1820 SOCIETY (GUESTS 18-20 YEARS ONLY)

1820 Society is an exclusive option for young adult Guests. Come meet fellow passengers and learn about the excellent activities that the Disney Wonder offers to create the perfect cruise experience.



80'S FLASHBACK

The 80's are back! Join your Cruise Staff team, in testing your 80's knowledge in this high energy 80's revival.



ANYONE CAN COOK

Every Chef has a specialty, and ours is no exception. Get a taste of perfection with each recipe.



MATCH YOUR MATE

It's time to play everyone's favorite couples game show, Match Your Mate!



Senses Spa & Salon has a variety of seminars and fitness classes available throughout the cruise. Pamper yourself with therapeutic spa treatments of heat, steam, rain and water in luxurious and tranquil private rooms. Deck 9, Forward.

BEVERAGE SEMINARS

Your Beverage team has a host of tastings and seminars to entertain and educate you. Stop by Promenade Lounge, Deck 3, Aft to pre-book these experiences (nominal fee applies).

Mixology - Stem to Stern Wine Tasting - Martini Tasting - Champagne Tasting

Beer Tasting - Cognac Tasting - Whisky Tasting

Tequila & Margarita Tasting - Chocolate & Liquor Tasting - Rum Tasting

FEATURED VARIETY ACTS THIS VOYAGE



THE ACAPELLA VOCALS OF EDGE EFFECT

The innovative vocal collaboration, The Edge Effect is taking music to a whole new level, and in ways you might not expect. The Edge Effect combines pop, R & B, jazz, rock, and funk in a vocal show unlike any other.

The Edge Effect's signature sound blurs the genre line and weaves a colorful tapestry of infectious beats, intricate harmonies, and spectacular vocal acrobatics. Their vast repertoire knows no boundaries to style or genre, and the band's stunning reinterpretations of musical favorites, as well as inventive, contemporary original songs, make for an unparalleled entertainment experience for all ages.



THE PHYSICAL COMEDY OF MICHAEL HOLLY

Michael Holly began his performing days on the cobbled streets of Fantasyland at Disneyland in 1985 and since then has been the comedy star of a dozen Las Vegas Shows including Vegas-The Show at Planet Hollywood, V-The Ultimate Variety Show at the Venetian, Les Folies Bergere at The Tropicana and has the highest rated one man comedy variety show in Las Vegas, his own, "Michael Holly's Off The Wall Comedy Hour".



DISNEY ON BROADWAY STAR KISSY SIMMONS

Disney Theatrical Productions is proud to present "Moments of Kissy". For 9 years, Kissy starred as Nala in Disney's The Lion King on Broadway, National Tour, and in Las Vegas. "Moments of Kissy", created exclusively for Disney Cruise Line, features hit songs from Disney on Broadway classics as well as Kissy's other musical favorites.



THE MUSICAL TALENTS OF WILL AND ANTHONY NUNZIATA

Classically-trained tenors and Upright Citizens Brigade trained comedians, Will & Anthony Nunziata wow sold out audiences all across the country with their inspiring and fresh takes on songs ranging from pop standards and classical crossovers to Broadway and movie-bound original songs.



THE MAGIC & COMEDY OF BILLY KIDD

Billy Kidd has graced stages all over the world from Australia, to South East Asia, all over Europe, the Middle East and North America. She has performed at Hollywood's Magic Castle and also runs the weekly Krowd Keepers Magic Theatre in Bath, England.



THE MUSIC & COMEDY OF JOHN CHARLES

With just his guitar, and his incredible singing voice, John Charles amazes his audience with his ability to combine music, comedy and audience interaction. No two shows are ever alike!

FUN FOR ALL AGES HIGHLIGHTS



ADVENTURES AWAY

Earn your status as V.I.P. sailors as your Cruise Director, your Disney Pals, and the Cruise Staff officially begin your "Adventures Away".



DISNEY VACATION CLUB GROUP PREVIEW

Join us for our interactive group presentation to learn about taking magical vacations year after year! For more information, please see a Disney Vacation Club Cast Member on Deck 4, Midship, or call 7-2805 from your stateroom phone.



FAMILY TALENT SHOW SIGN UP

Pre-register at the Port Adventures Desk, Deck 3, Midship Let your family take center stage and strut their stuff. Everyone has a talent, it's time to show off yours! Pre-register at the Port Adventures Desk.



FREEZING THE NIGHT AWAY WITH ANNA, ELSA AND FRIENDS!

It's a Big Summer Blowout! Come join some of your favorite Frozen friends and Arendelle's royal party planners on Deck 9 for the best deck celebration on this side of the fjord! (Weather Permitting)



FROZEN PHRASES

Contestants attempt to guess a series of words or phrases based on descriptions given to them by their teammates as they race against the clock in this Frozen themed game show.

GAME SHOW: THE FEUD

"Survey Says" you'll have a fantastic time with our version of a classic game.

GAME SHOW: THE WHEEL

A special version of this popular TV game show.



JACK-JACK'S INCREDIBLE DIAPER DASH

Calling all baby cruisers! It's time to take to the mat to see who's the fastest crawler of the seven seas! Register your baby 15 minutes prior to the big race.



JACKPOT BINGO

CASH prizes and raffle prizes to be won in our family friendly Bingo sessions with your Cruise Staff. Those under the age of 18 must be accompanied by an adult to play!



MICKEY MANIA

Join us for the ultimate test of your Disney knowledge as we play our live, interactive game show, that's "insania!"



OAKEN'S MAYPOLE SWIRL AND TWIRL

Hoo-Hoo! Family! Join Oaken's cousins for a Midsummer celebration. Take a swirl and a twirl around the maypole and learn some traditional songs and dances, yah?



SO YOU THINK YOU KNOW YOUR FAMILY?

This fun-filled family game show is always full of surprises. Find out how well you know, or don't know your family!



WHO WANTS TO BE A MOUSEKETEER?

Your chance to get into the "hot seat" and win limited edition prizes. Or, play along as part of our live studio audience.

GUEST PRESENTERS: BALLROOM DANCE CLASSES

BALLROOM DANCERS, WILLEM AND NATALIA

A native of Moscow, Natalia studied ballet and classical piano as a child and pursued her love of the arts at the Russian Academy of Theatre Arts, where she received an MFA with honors. After graduation, she danced professionally in Moscow before touring the world as a performer.

Willem de Vries has been a professional Ballroom & Latin dancer, instructor, competitor, and choreographer for 17 years. During that time he has competed and taught around the world and won various regional, national, and international awards and titles. Willem currently works with Dancing With The Star's Louis Van Amstel as one of the master trainer's in Louis' highly successful LaBlast ballroom dance fitness program. He also served as the ballroom choreography consultant and dance model for Dreamwork's animated feature films 'Puss In Boots' & 'Madagascar 3'.

YOUTH ACTIVITIES INFO & HIGHLIGHTS



Dine & Play

As a convenience for families dining at 8:15 pm, our Youth Activities counselors will be available at the entrance of each restaurant to bring registered children to join the fun in the Youth Activities areas at the following times:

9:15 pm at the entrance of Triton's,

9:30 pm at the entrance of Tiana's Place and Animator's Palate.

Pre-School Fun

Disney's Oceaneer Club is reserved for only those between 3-5 years of age. This is a time for them to become acclimated to Disney's Oceaneer Club, make new friends and join in on a lot of fun-filled programs and activities. Please note after Pre-School Fun has concluded, Disney's Oceaneer Club will be open for Secured Programming for ages 3-12.

Youth Activities Open House

Open House is an opportunity for all to come and participate in a variety of exciting activities and free time in the Oceaneer Club, Oceaneer Lab, Edge and Vibe throughout the cruise. During these times secured programming will still be offered in the other venue for those looking to check their children into care.

Youth Activities Venue Tour

Come and take a tour of Disney's Oceaneer Club and Disney's Oceaneer Lab. This informative tour will give you the information you need to know about our exciting spaces and activities offered for children ages 3-12. Please see your Personal Navigator or the Navigator App for times.



3 - 12 years old

JOIN THE LION GUARD

Harness your inner animal and find out if you have what it takes to join the Lion Guard!

MILES' COSMIC EXPLORER ADVENTURES

Miles needs your help! Gadfly has stolen his tech, and it's up to you to solve clues and puzzles in order to return the missing items back to Miles.

SOFIA THE FIRST - MAGICAL STORYTELLING

You're invited to take part in Sorcery 101 at the Royal Prep Academy, where you'll learn a few spells and help retell one of Sofia's many magical adventures.



3 - 12 years old

ANYONE CAN COOK: COOKIES

From our galley to yours. Join our chefs as they show you how to prepare delicious cookies.

LAVA FLOW

Build your own volcano and watch it erupt as you learn about the physics of volcanoes.

PISTON CUP CHALLENGE

It's Dinoco time and you're part of the pit crew! Design your own race car and see if you've got what it takes to end up in the winner's circle!



11 - 14 years old

HEROES AND VILLAINS

Join your favorite hero or villain team on a series of activities that will take place throughout the cruise.

DESCENDANT'S DEN DJ SPIN OFF

Photo Booth! DJ lessons! Fun games! Sing! Laugh! Dance! It's the next generation of fun - Descendants style!



14 - 17 years old

GOTCHA

You will try to eliminate your victim by various methods collecting points throughout the day, last person standing with the most points wins.

THAT'S HILARIOUS

Ever wanted to show off your comedy skills? Then be a part of the cast for the crazy improv show "That's Hilarious" and put on a live show for your friends.

BUENA VISTA THEATRE

Deck 5, Aft

FEATURE MOVIES THIS VOYAGE

MONDAY - VANCOUVER

1:45 pm	G	Cars 3
5:15 pm	PG	Coco
8:00 pm	PG	Coco
10:15 pm	PG	A Wrinkle in Time

TUESDAY - DAY AT SEA

8:30 am	PG	Family Movie Fun Time: Coco
2:30 pm	PG	A Wrinkle in Time
5:15 pm	PG	Beauty and the Beast (2017)
8:00 pm	PG	Beauty and the Beast (2017)
10:45 pm	PG-13	Solo: A Star Wars Story



WEDNESDAY - KETCHIKAN

12:00 pm	G	Cars 3
2:15 pm	PG-13	Black Panther
5:15 pm	PG-13	Ant-Man and The Wasp
8:00 pm	PG-13	Ant-Man and The Wasp
10:30 pm	PG-13	Black Panther



THURSDAY - ICY STRAIT POINT

9:00 am	PG	A Wrinkle in Time
11:30 am	PG-13	Solo: A Star Wars Story
2:15 pm	PG-13	Avengers: Infinity War
5:00 pm	PG-13	Solo: A Star Wars Story
7:45 pm	PG-13	Solo: A Star Wars Story
10:30 pm	PG-13	Ant-Man and the Wasp



FRIDAY - JUNEAU

9:00 am	PG-13	Avengers: Infinity War
12:00 pm	PG	Beauty and the Beast (2017)
2:45 pm	PG	Coco
5:15 pm	PG-13	Black Panther
8:15 pm	PG-13	Black Panther
11:00 pm	PG-13	Avengers: Infinity War



SATURDAY - HUBBARD GLACIER

9:00 am	PG	The Incredibles 2
11:45 am	PG-13	Ant-Man and The Wasp
2:15 pm	PG-13	Solo: A Star Wars Story
5:00 pm	PG-13	Avengers: Infinity War
8:00 pm	PG-13	Avengers: Infinity War
11:00 pm	PG-13	The Incredibles 2



SUNDAY - SKAGWAY

11:30 am	PG-13	Solo: A Star Wars Story
2:30 pm	PG	The Incredibles 2
5:15 pm	PG-13	Ant-Man and The Wasp
8:00 pm	PG-13	Ant-Man and The Wasp
10:45 pm	PG	The Incredibles 2



MONDAY - TRACY ARM

9:15 am	PG	The Incredibles 2
2:00 pm	PG-13	Avengers: Infinity War
5:15 pm	PG	The Incredibles 2
8:15 pm	PG	The Incredibles 2
10:45 pm	PG-13	Avengers: Infinity War



TUESDAY - DAY AT SEA

11:30 am	PG-13	Solo: A Star Wars Story
2:15 pm	PG	The Incredibles 2
5:00 pm	PG-13	Solo: A Star Wars Story
7:45 pm	PG-13	Solo: A Star Wars Story
10:45 pm	PG-13	Ant-Man and the Wasp



Subject to change.

MORE TO ENJOY ONBOARD



NEW SPRING 2019 ITINERARIES

New Spring 2019 Itineraries announced! Set sail for favorite tropical destinations as Disney Cruise Line will return to The Bahamas, Caribbean and even Baja cruises! Visit the Disney Vacation Planning desk, Deck 4, Midship for more information. Disney Vacation Planning tends to get busy on the last day of sailing. Don't miss the opportunity to plan your next Disney vacation.



DISNEY VACATION CLUB® GROUP PREVIEW

Join us for our interactive group presentation to learn about taking magical vacations year after year! For more information, please see a Disney Vacation Club Cast Member on Deck 4, Midship, or call 7-2805 from your stateroom phone.

PORT SHOPPING INFORMATION

Come and meet Sal, your Port Shopping Guide, at the Port Shopping Desk, Deck 3, Midship from 7:00 pm - 8:30 pm for a complimentary charm. Don't miss the Port Shopping Talk on Day at Sea 1 in the Buena Vista Theatre, Deck 5, Aft, at 11:00 am for all of your Port Shopping information and to enter a raffle for a chance to win a Diamond Pendant. Tune into Channel 24-6 all cruise long for more Port Shopping information.



Connect@Sea

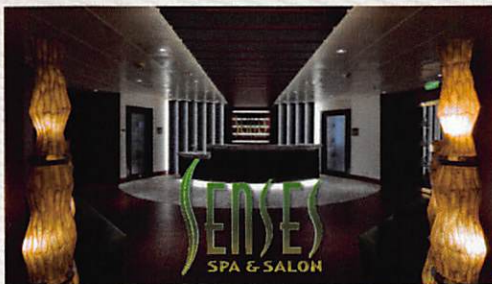
FREE INTERNET EMBARKATION DAY SPECIAL

Sign up for a free 50 MB Internet package today and enjoy it throughout the cruise! This offer is only available from noon to midnight on the day your cruise begins. On your wireless device, simply find the "DCL-Guest" Wi-Fi Network, go to www.dclguest.com to create an account, and get your free 50 MB of data to start sharing your memories even before you leave port! If you have any questions, ask our Connect@Sea Expert located at Deck 3, Midship. No purchase necessary. The free 50 MB package can only be used for the duration of the cruise. Only one free package per stateroom, but everyone can share it. Unused data from a package will not be reimbursed and it is non-transferable between voyages or ships.

RELIGIOUS SERVICES

Groups who need a location to practice their faith may contact Guest Services for availability information.

SENSES SPA & SALON



DECK 9, FORWARD Extension 7-1465

RAINFOREST

Come enjoy our serenity lounge, with heated chairs, dry sauna, aromatherapy steam rooms and rainfall, misting showers.

REJUVENATION SPA CONSULTATIONS

Ready to enhance your natural beauty? Book your free Facial Rejuvenation consultation with our Rejuvenation Dr. at the Senses Spa.

ONBOARD ACUPUNCTURE

Acupuncture is a safe and effective medicine that allows your body to heal itself, and is effective for various health conditions. See your onboard Acupuncturist for your free consultation.

IONITHERMIE

Lose between 1 – 8 inches. Speed up your metabolism. Firm muscle tone. Improve appearance of cellulite. \$155/1 session or \$299/3 sessions.

BIOTEC FACIALS

Our revolutionary facials address skin tone, blemishes and fine lines to transform the texture of the skin. The ultrasonic peel, massage and light therapy deliver a complexion that has never been smoother.

AN 18% AUTO GRATUITY IS ADDED TO ALL SENSES SPA SERVICES.

MERCHANDISE SHOPPING



DECK 4, FORWARD

TAG HEUER TIMEPIECES ONBOARD

Representatives from TAG Heuer, one of the world's largest luxury watch brands, have boarded the Disney Wonder® Cruise Ship. Visit White Caps, Deck 4, Forward, for a preview of the stylish new timepieces brought onboard especially for this sailing. Please check your Personal Navigator for details about this sailing's onboard TAG Heuer events.

DISNEY CRUISE LINE ALASKAN SOUVENIRS

Discover a variety of merchandise to commemorate your trip for the Alaskan season, including apparel, accessories, souvenirs, plush, drink ware and more. Deck 4, Forward.

2018 DISNEY CRUISE LINE MERCHANDISE

Step into Mickey's Mainsail today and commemorate your Disney Cruise with a wide selection of 2018 Disney Cruise Line merchandise starring Steamboat Willie. From casual apparel to drinkware, you are sure to find a special souvenir for the whole family.

BIBBIDI BOBBIDI BOUTIQUE

A makeover fit for a princess! Fairy Godmothers-in-Training are ready with magic and pixie dust to give your Prince and Princess the transformation of a lifetime. Make your reservations by visiting Bibbidi Bobbidi Boutique, Deck 10, Forward, Port Side, or dialing extension 7-10878. Limited space available.

DUE TO PORT REGULATIONS, WHEN THE SHIP IS DOCKED, THE STORES WILL REMAIN CLOSED.

SHUTTERS PHOTO GALLERY



DECK 4, AFT

WELCOME ABOARD RAFFLE

View your embarkation photos in Shutter's, Deck 4, Aft and enter our raffle for a chance to win a 10 Digital Photos valued at \$149.95. Winner must be present at the 10:00 pm drawing in Shutter's, Deck 4, Aft. *Terms and conditions apply. Visit Shutter's on Deck 4, Aft for more information.

GET THE PICTURE!

Take home all your stateroom photos from this cruise on a USB! Terms and conditions apply. Visit Shutter's on Deck 4, Aft and ask your friendly Shutter's staff for more information. Get The Picture! Hurry! Order yours now.

PHOTO BOOK

Turn your magical vacation memories into an impressive keepsake with a personalized PhotoBook. Order by 9:30 pm on the final night of the cruise.

PRIVATE STUDIO PORTRAITURE

Book our exclusive and contemporary Private Studio experience today and capture these memories. No obligation to purchase. Black and White only.

PHOTOS ARE AVAILABLE FOR VIEWING ON OUR INTERACTIVE PHOTO KIOSKS APPROXIMATELY FIVE HOURS AFTER BEING TAKEN AND ARE ONLY AVAILABLE FOR PURCHASE DURING THIS CRUISE.

IMPORTANT INFORMATION

Security Notice/Unaccompanied Minor Ashore
All Guests (including children) who wish to disembark or embark the ship are required to present their Key to the World card at the gangway. A photo ID is also required for those Guests who are 18 years of age or older. Guests under the age of 18 are required to have a Parent, Guardian or other responsible adult complete the "Traveling with Minors" section of "My Online Check-In" prior to sailing or sign an authorization form at the Guest Services Desk if they wish to go ashore unaccompanied or with any adult from another stateroom.

Inclement Weather
For the safety of all Guests, outdoor events may be changed due to unforeseen weather conditions.

Corridor Quiet Hours
As a courtesy to all our Guests, please recognize quiet hallway hours from 10:00 pm til 8:00 am.

Cold and Flu Reminder
Please wash hands frequently and thoroughly; particularly before meals. Contact the Health Center by dialing 7-1927, should anyone in your party become ill.

Smoking
For the comfort of our Guests, the following areas are designated as smoking areas:
*Deck 9, Forward, Port Side
*Deck 4, Starboard side from 6:00 pm to 6:00 am only (all of Deck 4 is non-smoking from 6:00 am to 6:00 pm)
Smoking is prohibited inside all Guest staterooms and on stateroom verandahs. Guests found smoking in their staterooms or on their verandahs will be charged a \$250 stateroom recovery fee. Electronic cigarettes may only be used in designated smoking areas.

Walt Disney Theatre
Theatrical performances may use artificial fog, strobe lights, pyrotechnics and other special effects. For the safety of our performers, and the comfort of those around you, the use of any photography, video recording device or any electronic equipment is prohibited.

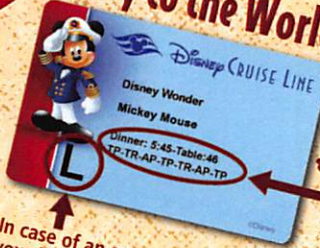
No Reserved Seats Policy
As a courtesy to all our Guests, we kindly advise that the saving of seats is not permitted in the Walt Disney Theatre, and the saving of the sun loungers is not permitted on Deck 9 and 10. Items left unattended will be returned to lost and found at Guest Services, Deck 3 Midship.

Verandah Safety
Please do not leave any personal items on your verandah that may be blown overboard or present a fire hazard if left unattended. Do not throw anything over the ship's side. Guests should not sit, lean or climb on the railing or leave children unattended on the verandah. Do not open the verandah and stateroom doors simultaneously as this may create a wind effect and could cause the doors to slam unexpectedly.

WELCOME ABOARD!



Key to the World Card Information



In case of an emergency, your lettered Assembly Station is indicated here.

- ♥ Dinner seatings are 5:45 pm or 8:15 pm.
- ♥ Your table number for the cruise is located after your dinner seating.
- ♥ Dinner locations and rotation are indicated by letters under your dinner time.
AP - Animator's Palate, Deck 4, Aft
TR - Triton's, Deck 3, Midship
TP - Tiana's Place, Deck 3, Aft

ADVENTURES AWAY!

FAMILY DECK PARTY

Earn your status as V.I.P. sailors as your Cruise Director, Ashley, your Disney Pals, and the Cruise Staff officially begin your "Adventures Away".

Deck 9 Stage, 4:30 pm

Afternoon	1:45	2:00	2:15	2:30	2:45	3:00	3:15	3:30	3:45	4:00	4:15	4:30	4:45	5:00	5:15	5:30	5:45	6:00	6:15	6:30	6:45										
FUNNEL VISION	Brother Bear (G) Open Captioning Funnel Vision										<div>Mandatory Guest Assembly Drill 4:00 pm (All Guests must attend)</div> <div>All ship services will be suspended during this time.</div> <div>Refer to the posted drill instructions on the back of your stateroom door prior to heading to Deck 4. Please bring your Key to the World Card.</div> <div>You will not need your life jacket for the Guest Assembly Drill.</div> <div> ↑ Your Assembly Station is indicated on your Key To The World card.</div>																				
BUENA VISTA THEATRE	Cars 3 (G) Duration: 1 Hour 49 Minutes																														
CHARACTERS	Join the Lion Guard Oceaneer Club																														
FUN FOR ALL AGES	Walking Ship Tour Preludes				Walking Ship Tour Preludes				<div>The Acapella Vocals of EDGE EFFECT Walt Disney Theatre</div>																						
	Join the Lion Guard Oceaneer Club				Youth Activities Tour Oceaneer Lab																										
ADULTS	Acupuncture Demo Senses Spa Fitness Center										<div>Footprint Analysis Senses Spa Fitness Center</div> <div>Cruisin' Solo Gathering Cove Cafe</div>																				
	Facial Consultations Senses Spa & Salon					Spa Raffle Senses Spa Fitness Center																									
VIBE 14-17 YEARS OLD	Youth Activities Open House & Registration																														
EDGE 11-14 YEARS OLD	Youth Activities Open House & Registration																														
OCEANEER LAB 3-12 YEARS OLD	Youth Activities Open House & Registration					Youth Activities Tour					Open House																				
OCEANEER CLUB 3-12 YEARS OLD	Open House		Join the Lion Guard		Youth Activities Open House & Registration																										
	Youth Activities Open House & Registration					Youth Activities Open House & Registration																Pre-School Fun (3-5 Years Old)									
	Youth Activities Open House & Registration					Youth Activities Open House & Registration																Youth Activities Open House & Registration									

Mandatory Guest Assembly Drill 4:00 pm
(All Guests must attend)

All ship services will be suspended during this time.

Refer to the posted drill instructions on the back of your stateroom door prior to heading to Deck 4. Please bring your Key to the World Card.

You will not need your life jacket for the Guest Assembly Drill.



Your Assembly Station is indicated on your Key To The World card.

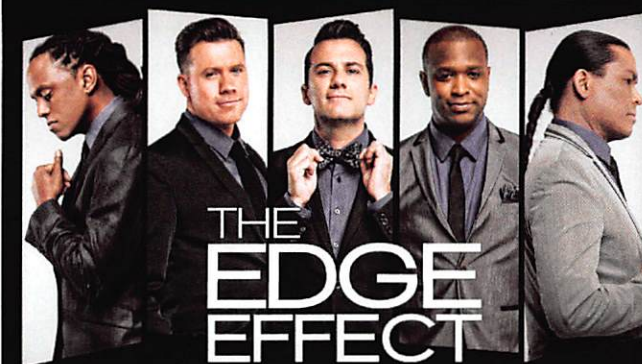


Evening	7:00	7:15	7:30	7:45	8:00	8:15	8:30	8:45	9:00	9:15	9:30	9:45	10:00	10:15	10:30	10:45	11:00	11:15	11:30	11:45	12:00																										
FUNNEL VISION		Frozen Fever (G) Funnel Vision	Wreck-It Ralph (PG) Open Captioning Funnel Vision							WALL-E (G) Funnel Vision																																					
BUENA VISTA THEATRE						Coco (PG) Duration: 1 Hour 49 Minutes										A Wrinkle in Time (PG) Duration: 1 Hour 49 Minutes																															
CHARACTERS										Tiana DK5 Mid (S) Preludes	Chip & Dale DK5 Mid (S) Preludes	Ariel DK4 Mid (S) Preludes	Pluto DK4 Mid (S)																																		
										Goofy DK4 Mid (S)	Donald Lobby Atrium (P)		Mickey Lobby Atrium (P)																																		
FUN FOR ALL AGES		Family Dance Party Promenade Lounge	Disney Tunes Trivia Azure						Family Animation D Lounge																																						
		Disney Vacation Club Members Preview D Lounge						Chilled Sounds with The Dreamers Promenade Lounge					Jazz Hits with The Brace Boys Lobby Atrium																																		
ADULTS		Team Trivia Crown & Fin Pub						Piano Hits with Ed Kelly Cadillac Lounge						Piano Hits with Ed Kelly Cadillac Lounge	100% Sassy, Sir & Wendie's Taste & Cove Cafe	Ice Breakers Azure	Wonder Quest Azure	Cruise Staff DJ Azure																													
		Music Through the Decades with Aaron Lotzow Cadillac Lounge						Smooth Sounds with Ed Harvey Crown & Fin Pub											Late Night Piano with Aaron Lotzow Cadillac Lounge																												
VIBE 14-17 YEARS OLD						Cards Tournament										Wii Challenge										Ice Breakers					Profiles					The Download					Heroes and Villains						
EDGE 11-14 YEARS OLD						GAGA Ball										Ice Breakers					Profiles					Taking it to The Edge										Heroes and Villains											
OCEANEER LAB 3-12 YEARS OLD		Meet Your Counselors								Oceaneer Rangers										Lava Flow										GAGA Ball										Human Bingo							
OCEANEER CLUB 3-12 YEARS OLD			Welcome Party								Parachute Games										Once Upon a Time										MARVEL Super Hero Academy Avengers Assemble																

DRINK OF THE DAY
Paradise Punch (Alcoholic)
Espresso Chiller (Non-Alcoholic)

Fold along the dotted lines and take me with you so you don't miss any of the fun!

YOUTH ACTIVITIES OPEN HOUSE
A non-secured program with activities for families, adults and children to enjoy together.



THE EDGE EFFECT

WALT DISNEY THEATRE

Deck 4, Forward
6:15 pm & 8:30 pm

As a courtesy to all Guests, we kindly advise that the saving of seats is not permitted in the Walt Disney Theatre.

Assistance is available at the entrance to the Walt Disney Theatre 30 minutes prior to show time.

Character Meet & Greet Ticket Distribution

Port Adventures Desk, Deck 3, Midship - 12:00 pm - 2:00 pm
For Guests who did not reserve meet and greets online, a limited number of tickets are available today to meet some of your favorite Disney friends.

Princess Gathering ~ Frozen Meet and Greet
Tickets are required for each of these meet and greets.
Space is limited.

Character Appearances

MICKEY MOUSE

DK4 Mid (S)
11:45 am, 12:45 pm & 5:15 pm
Lobby Atrium (P) - 10:15 pm

GOOFY

DK4 Mid (S)
12:15 pm, 1:15 pm & 9:30 pm
Lobby Atrium (P) - 5:45 pm

JOIN THE LION GUARD

Disney's Oceaneer Club
2:00 pm

ADVENTURES AWAY

Deck 9 Stage - 4:30 pm

PLUTO

Lobby Atrium (P) - 5:15 pm
DK4 Mid (S) - 10:00 pm

MINNIE MOUSE

DK4 Mid (S) - 5:45 pm

PRINCESS TIANA

Preludes - 9:15 pm

CHIP & DALE

DK5 Mid (S) - 9:30 pm

DONALD DUCK

Lobby Atrium (P) - 9:45 pm

ARIEL

Preludes - 9:45 pm

(S) Starboard Side - (P) Port Side
For details of daily Disney character appearances, refer to the character line on your Navigator Grid, or the digital character board in the Lobby Atrium.
Lines close 15 minutes after advertised start time.

SHIP DIRECTORY

YOUTH ACTIVITIES

DISNEY'S OCEANEER CLUB	DECK 5, MID	12:00 PM - 3:30 PM 4:30 PM - 12:00 AM
DISNEY'S OCEANEER LAB	DECK 5, MID	12:00 PM - 3:30 PM 4:30 PM - 12:00 AM
EDGE	DECK 9, MID	12:00 PM - 3:30 PM 4:30 PM - 12:00 AM
IT'S A SMALL WORLD NURSERY	DECK 5, AFT	5:30 PM - 11:00 PM
VIBE	DECK 10, MID	12:00 PM - 3:30 PM 4:30 PM - 12:00 AM

POOLS

Children under 12 years of age must have adult supervision in all pools.

AQUALAB	DECK 9, AFT	12:00 PM - 3:30 PM 4:30 PM - 6:00 PM
DORY'S REEF	DECK 9, AFT	12:00 PM - 3:30 PM 4:30 PM - 6:00 PM
GOOFY'S POOL	DECK 9, MID	12:00 PM - 3:30 PM 6:00 PM - 8:00 PM
QUIET COVE POOL (18+)	DECK 9, FWD	12:00 PM - 3:30 PM 4:30 PM - 10:00 PM
TWIST N' SPOUT	DECK 9, AFT	12:00 PM - 3:00 PM 4:30 PM - 6:00 PM

Please note, "selfie sticks" are not permitted in any aquatic area.
Complimentary pool vests are available for children to use in the pools onboard.
They are located on the pool deck.

RECREATION

CHILL SPA	DECK 9, FWD	12:00 PM - 10:00 PM
PORT ADVENTURES DESK	DECK 3, MID	12:00 PM - 3:30 PM 4:30 PM - 8:30 PM
SENSES FITNESS CENTER (18+)	DECK 9, FWD	12:00 PM - 10:00 PM
WIDE WORLD OF SPORTS DECK	DECK 10, FWD	12:00 PM - 3:30 PM 4:30 PM - 12:00 AM

GENERAL INFORMATION

BUENA VISTA THEATRE	DECK 5, AFT	SHOWTIMES
CONNECT@SEA DESK	DECK 3, AFT	1:00 PM - 4:00 PM 7:00 PM - 10:00 PM
DISNEY VACATION CLUB DESK	DECK 4, MID	5:00 PM - 10:00 PM
DISNEY VACATION PLANNING DESK	DECK 4, MID	7:00 PM - 8:30 PM
FUNNEL VISION	DECK 9, MID	SHOWTIMES
GUEST SERVICES	DECK 3, MID	24 HOURS
MEDICAL HEALTH CENTER	DECK 1, FWD	4:30 PM - 7:00 PM
PORT SHOPPING DESK	DECK 3, MID	7:00 PM - 8:30 PM
PRELUDES	DECK 4, FWD	SHOWTIMES
SENSES SPA AND SALON	DECK 9, FWD	12:00 PM - 10:00 PM
SHUTTERS PHOTO GALLERY	DECK 4, AFT	6:00 PM - 10:00 PM
WALT DISNEY THEATRE	DECK 4, FWD	SHOWTIMES

SHOPPING

ART GALLERY	DECK 4, MID	7:00 PM - 8:00 PM
BIBBIDI BOBBIDI BOUTIQUE	DECK 10, FWD	12:00 PM - 3:00 PM 5:00 PM - 9:00 PM
MICKEY'S MAINSAIL	DECK 4, FWD	6:00 PM - 11:00 PM
QUACKS	DECK 9, MID	
SEA TREASURES	DECK 3, FWD	6:00 PM - 11:00 PM
WHITE CAPS	DECK 4, FWD	6:00 PM - 11:00 PM

EVENING ATTIRE Cruise Casual

WEATHER Today: Cloudy
FORECAST High: 70°F/21°C

DINING & LOUNGES

LUNCH

CABANAS	DECK 9, AFT	11:45 AM - 3:15 PM
DAISY'S DE LITES	DECK 9, AFT	12:00 PM - 3:30 PM 4:30 PM - 6:00 PM
PINOCCHIO'S PIZZERIA	DECK 9, MID	12:00 PM - 3:30 PM 4:30 PM - 6:00 PM
PETE'S BOILER BITES	DECK 9, AFT	12:00 PM - 3:30 PM 4:30 PM - 6:00 PM
TRITON'S (À-LA CARTE)	DECK 3, MID	11:45 AM - 1:30 PM

DINNER

ANIMATOR'S PALATE	DECK 4, AFT	5:45 PM & 8:15 PM
PALO (18+)	DECK 10, AFT	6:00 PM - 8:30 PM
PETE'S BOILER BITES	DECK 9, AFT	6:00 PM - 9:30 PM
TIANA'S PLACE	DECK 3, AFT	5:45 PM & 8:15 PM
TRITON'S	DECK 3, MID	5:45 PM & 8:15 PM

LATE NIGHT SNACKS

CROWN & FIN PUB (18+ AFTER 9:00 PM)	DECK 3, FWD	10:30 PM - 11:30 PM
PINOCCHIO'S PIZZERIA	DECK 9, MID	9:30 PM - 12:00 AM
PROMENADE LOUNGE	DECK 3, AFT	10:30 PM - 11:30 PM

ADDED FEATURES

BEVERAGE STATION	DECK 9, AFT, PORT SIDE	24 HOURS
EYE SCREAM	DECK 9, MID	12:00 PM - 3:30 PM 4:30 PM - 11:00 PM
ROOM SERVICE	DIAL 4330	OPENS AT 1:30 PM

ENTERTAINMENT - LOUNGES - BARS

Adults must be 21 and older to consume alcoholic beverages.

AZURE (18+ AFTER 9:00 PM)	DECK 3, FWD	7:30 PM - 1:00 AM
CADILLAC LOUNGE (18+)	DECK 3, FWD	6:00 PM - 12:30 AM
COVE CAFE (18+)	DECK 9, MID	11:45 AM - 12:00 AM
CROWN & FIN PUB (18+ AFTER 9:00 PM)	DECK 3, FWD	5:00 PM - 12:00 AM
D LOUNGE	DECK 4, MID	SHOWTIMES
PINOCCHIO'S PIZZERIA	DECK 9, MID	11:45 AM - 12:00 AM
PRELUDES	DECK 4, FWD	SHOWTIMES
PROMENADE LOUNGE	DECK 3, AFT	11:45 AM - 12:00 AM
SIGNALS (18+)	DECK 9, FWD	5:00 PM - 9:00 PM
SULLY'S SIPS	DECK 9, MID	11:45 AM - 6:00 PM

Public Health Advisory: Consuming raw or under-cooked meats, poultry, seafood, shellfish, or eggs may increase your risk for food borne illness, especially if you have certain medical conditions.

Disney CRUISE LINE.

PORT ADVENTURES

Explore and more with our carefully selected Port Adventures. Visit the Port Adventures Desk, Deck 3, Midship to find out more.

IMPORTANT NUMBERS

Fire/Security: 7-3001
Medical EMERGENCY: 7-3000
Health Center: 7-1927