

# VOYAGE NAVIGATOR

MONDAY  
JULY 23, 2018

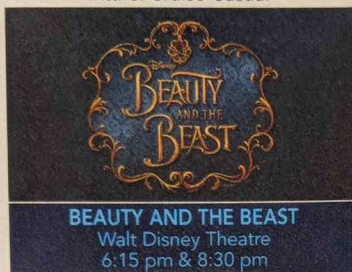
TO

THURSDAY  
JULY 26, 2018

## CRUISE HIGHLIGHTS

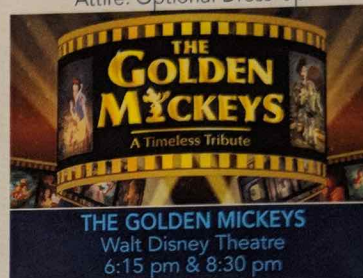
### MONDAY

PORT CANAVERAL  
Port Departure: 5:00 pm  
All Aboard: 3:45 pm  
Attire: Cruise Casual



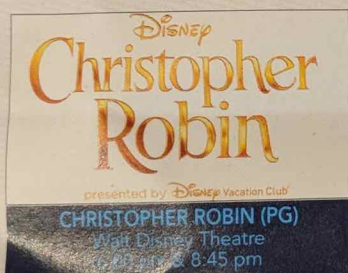
### TUESDAY

DISNEY CASTAWAY CAY  
All Ashore: 8:30 am  
All Aboard: 4:45 pm  
Attire: Optional Dress-Up



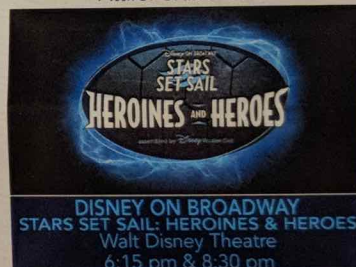
### WEDNESDAY

DAY AT SEA  
Attire: Cruise Casual



### THURSDAY

DISNEY CASTAWAY CAY  
All Ashore: 8:30 am  
All Aboard: 3:45 pm  
Attire: Cruise Casual



Subject to change.

## WELCOME ABOARD!

### YOUR STATEROOM & LUGGAGE

Staterooms will be ready at 1:30 pm. To allow your Stateroom Host/ess time to prepare your room, please do not remove the blue stanchion straps. Stateroom hosts will deliver luggage throughout the day until 6:00 pm.

### STATEROOMS WITH BUNK BEDS

Bunk beds are recessed into the ceiling and will be prepared during evening turndown service by your Stateroom Host/ess.

### STATEROOM SAFE

Each stateroom is equipped with a secured storage safe. Instructions for use are located on the safe.

### TO CHANGE DINING ASSIGNMENT

Requests for different seating times will be taken today:

1:00 pm - 3:30 pm; Book in Animator's Palate, Deck 3, Aft  
3:30 pm - 5:00 pm; please dial 7-1831, 7-1832, or 7-1833

### REMY & PALO DINING RESERVATIONS

Reservations are required and will be taken on a first come basis today:

1:00 pm - 3:30 pm; Animator's Palate, Deck 3, Aft

Please dial 7-9734 for Remy or 7-9735 for Palo for more information. Cover charge applicable.

**Adult Exclusive Dining Opportunity!** Guests are invited to make 2 dinner reservations at our two adult-exclusive restaurants, Palo & Remy. This includes one reservation on embarkation evening and one more on another night of the cruise. Reservations are subject to availability and a specialty dining charge will apply.

### DINNER

5:45 pm - First seating 8:15 pm - Second seating

Please check your Key To The World Card for details of your dining rotation, and bring them to your specific dining location. There is no need to wait in line prior to dinner. Dining Rooms open at designated seating times and your table is reserved each night of your cruise.

A = Animator's Palate, Deck 3, Aft E = Enchanted Garden, Deck 2, Midship R = Royal Palace, Deck 3, Midship

Create the most memorable experiences during your Disney Cruise Line vacation with Port Adventures! Our Port Adventures are designed for you to see the best our ports have to offer. Stop by the Port Adventures Desk, Deck 5, Midship where our friendly team will be happy to assist you plan your adventure!  
There is an adventure for everyone on your Disney Dream® vacation.

Disney Cruise Line  
**PORT ADVENTURES**

### IMPORTANT NUMBERS

Fire/Security: 7-3001

Medical Emergency: 7-3000

Health Center: 7-1927

## ADULT ACTIVITY HIGHLIGHTS

**1820 SOCIETY (GUESTS 18-20 YEARS ONLY)**  
1820 Society is an exclusive option for young adult guests. Come meet fellow passengers and learn about the excellent activities that the Dream offers to create the perfect cruise experience.

**80'S MUSIC CHALLENGE**  
"Moon Walk" back to the 80's as we put your musical knowledge of the decade to the test.

**KRAZY KARAOKE**  
Take to the stage, grab a microphone and sing your favorite tunes with your Club Host and DJ.

**MAKING OF THE DREAM**  
Explore the origins of Disney Cruise Line and the latest and greatest innovations conjured especially for the Disney Dream in this fascinating and entertaining behind-the-scenes program.

**MATCH YOUR MATE**  
It's time to play everyone's favorite couples game show, Match Your Mate!

Senses Spa & Salon has a variety of seminars and fitness classes available throughout the cruise. Pamper yourself with therapeutic spa treatments of heat, steam, rain and water in luxurious and tranquil private rooms. Deck 11, Forward.

### BEVERAGE SEMINARS

Your Beverage team has a host of tastings and seminars to entertain and educate you. Stop by Guest Services Deck 3, Midship to pre-book these experiences. (nominal fee applies).

Whiskey Tasting - Stem to Stern Wine Tasting - Martini Tasting  
Cognac Tasting - Tequila & Margarita Tasting - Mixology

## FEATURED VARIETY ACTS THIS VOYAGE

### THE ACAPPELLA SOUNDS OF DCAPPELLA

DCappella is Disney's new singing sensation, performing modern, a cappella versions of Disney hits with a fun twist. The group came together as a result of a nationwide search for the best vocal performing talent in a cappella and stage. DCappella is releasing music throughout 2018 and will begin a nationwide tour in January 2019.

### THE COMEDY & MAGIC OF STEVE VALENTINE

Steve Valentine is a renaissance man with 250 hours of television, four TV series, a dozen movies, countless commercials, two multi award winning video games and countless animation voices to his name. He is best known for his regular roles on Crossing Jordan, I'm In The Band and Estate of Panic, and stand out performances in The Walk, Psych, Blunt Talk, Mike & Molly and many more. Teens around the world know him for his starring roles in Disney's Avalon High, Teen Beach Movie, Wizards of Waverly Place The Movie and the terrifying Don't Look Under the Bed.

## FUN FOR ALL AGES HIGHLIGHTS

ADVENTURES BY DISNEY  
a Disney

Discover the latest guided group vacations available through our friends at Adventures by Disney.

### ARTISTS IN THE ATRIUM

Marvel at the unique talents of visual artists as Disney characters materialize on the easel, desk and griddle.

### BUCCANEER BLAST FIREWORKS

What's a pirate party without some fireworks to remind the other ships who be ruling the oceans blue? (Weather Permitting)

### COOKIN' IN THE ATRIUM

Celebrity Chef Art Smith joins noted food-and-wine personality Marcy Carriker Smothers to share stories and create culinary magic live on stage.

### DISNEY ARTISTS ACADEMY

Learn to draw Disney characters during this hands-on workshop led by beloved artist and historian Stacia Martin.

### DISNEY VACATION CLUB MEMBER MOUSE PARTY ON DECK

Celebrate 90 years of Mickey Mouse and Minnie Mouse during a character-filled dance party. Enjoy sweet treats, meet Mickey and friends voice actors and cap the night with the biggest fireworks show in Member Cruise history! (Weather Permitting)

### ESPN SPORTS CAMP

Calling all athletes! Gather your team and participate in a one of a kind sports camp at sea that only Disney and ESPN could offer. Learn new games, compete as teams & individuals - and have some fun! (Weather Permitting)

### FAMILY FUSION

Bring the entire family and test your Disney knowledge in the high-tech interactive game show, Family Fusion.

### GROWING UP DISNEY

Roy Patrick Disney (son of Disney Legend Roy E. Disney and grandson of company co-founder Roy O. Disney) joins Disney author and historian Tim O'Day, and Walt Disney Archives Director Becky Cline to share what it was like to "grow up Disney."

### ISLAND OF HEROES

Disney Vacation Club celebrates all things heroic by claiming Castaway Cay as an "Island of Heroes!" Enjoy the "Disney Vacation Club Hero Games," become a "Hero of the Community" and more.

### JACK-JACK'S INCREDIBLE DIAPER DASH

Calling all baby cruisers! It's time to take to the mat to see who's the fastest crawler of the seven seas! Register your baby 15 minutes prior to the big race.

### JACKPOT BINGO

CASH prizes and raffle prizes to be won in our family friendly Bingo sessions with your Cruise Staff. Those under the age of 18 must be accompanied by an adult to play.

### JARED BUSH: FROM SCRIPT TO SCREEN

The screenwriter behind Walt Disney Animation Studios' Zootopia and Moana takes you inside the creative process to reveal how animation develops from the script to the screen.

**PETE DOCTER & MICHAEL GIACCHINO: FROM SCENE TO SCORE**  
The legendary director and composer of Pixar Animation Studios' Up and Inside Out reunite to reveal how these Academy Award-winning films developed from scene to score.



**RALPH BREAKS THE INTERNET: BEHIND THE SCENES**  
Walt Disney Animation Studios' Josie Trinidad gives Members a behind-the-scenes look at Ralph Breaks the Internet, opening in U.S. theaters Nov. 21!



**SO YOU THINK YOU KNOW YOUR FAMILY?**  
This fun-filled family game show is always full of surprises. Find out how well you know, or don't know your family!



**STAY MAGICAL WITH DISNEY VACATION CLUB**  
Join us for a Member Celebration that's part playful competition and part vacation inspiration, plus enter for a chance to win an RCI® vacation!



**VOICES IN THE ATRIUM**  
The dynamic voices behind some of your favorite Disney characters gather in the atrium to share their stories and demonstrate their talents live on stage.

# BUENA VISTA THEATRE

Deck 4 & 5, Midship

## FEATURE MOVIES THIS VOYAGE

### MONDAY - PORT CANAVERAL, FLORIDA

5:15 pm PG-13 Solo: A Star Wars Story  
8:15 pm PG-13 Solo: A Star Wars Story  
11:00 pm PG A Wrinkle in Time

### TUESDAY - DISNEY CASTAWAY CAY

10:00 am PG A Wrinkle in Time  
12:15 pm PG-13 Black Panther  
2:45 pm PG-13 Ant-Man and The Wasp  
5:15 pm PG-13 Avengers: Infinity War  
8:15 pm PG-13 Avengers: Infinity War  
11:00 pm PG The Incredibles 2

### WEDNESDAY - DAY AT SEA

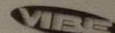
11:00 am PG The Incredibles 2  
6:15 pm PG-13 Ant-Man and The Wasp  
8:30 pm PG-13 Ant-Man and The Wasp  
11:00 pm PG-13 Solo: A Star Wars Story

### THURSDAY - DISNEY CASTAWAY CAY

10:30 am PG-13 Avengers: Infinity War  
1:45 pm PG-13 Ant-Man and The Wasp  
6:00 pm PG The Incredibles 2  
8:15 pm PG The Incredibles 2  
10:45 pm PG-13 Ant-Man and The Wasp

Subject to change.

## YOUTH ACTIVITIES INFO & HIGHLIGHTS



**Dine & Play**  
A convenience for families dining at 8:15 pm, our Youth Activities counselors will be available at 9:15 pm at the entrance of Royal Palace, Enchanted Garden and Animator's Palate dining rooms to bring registered children to join the fun in the Youth Activities areas.

**Pre-School Fun**  
Disney's Oceaneer Club is reserved for only those between 3-5 years of age. This is a time for them to become acclimated to Disney's Oceaneer Club, make new friends and join in on a lot of fun-filled programs and activities. Please note after Pre-School Fun has concluded, Disney's Oceaneer Club will be open for Secured Programming for ages 3-12.

**Youth Activities Open House**  
Open House is an opportunity for all to come and participate in a variety of exciting activities and free time in the Oceaneer Club, Oceaneer Lab, Edge and Vibe throughout the cruise. During these times secured programming will still be offered in the other venue for those looking to check their children into care.

**Youth Activities Venue Tour**  
Come and take a tour of Disney's Oceaneer Club and Disney's Oceaneer Lab. This informative tour will give you the information you need to know about our exciting spaces and activities offered for children ages 3-12. Please see your Personal Navigator or the Navigator App for times.



3 - 12 years old

### MICKEY'S PUZZLE PLAYTIME

Come and play with Mickey & friends as they share their favorite games, puzzles and dances!

### TOY STORY BOOT CAMP

Join Corporal Green in our own version of boot camp as we learn how to have fun - The Toy Story way!

### JEDI TRAINING: EXPERIENCE THE FORCE

Become one with the Force as you take your first step into a larger world.



3 - 12 years old

### SUPER SLOPPY SCIENCE

Join Professor Make-O-Mess in some of the most extreme experiments you will ever see in the world of Super Sloppy Science!

### PISTON CUP

It's Dinoco time and you're part of the pit crew! Design your own race car and see if you've got what it takes to end up in the winner's circle!

### GET THE HOOK

A villainous villain has stolen Captain Hook's prized golden hook. Become a member of the Top Deck Detective Agency and help solve the clues to retrieve Hook's hook.

### STITCH'S ADVENTURE SQUAD

Stitch, everyone's favorite alien, is making an appearance to share some of his mischievous games and activities.



11 - 14 years old

### HEROES VS. VILLAINS

Join your favorite hero or villain team on a series of activities that will take place throughout the cruise.

### THAT'S HILARIOUS

Ever wanted to show off your comedy skills? Then be a part of the cast for the crazy improv show "That's Hilarious" and put on a live show for your friends.



14 - 17 years old

### THE DOWNLOAD

Come up to Vibe and help plan all the fun activities you will be doing this cruise with your new friends!

### GOTCHA

You will try to eliminate your victim by various methods collecting points throughout the day, last person standing with the most points wins.

# MORE TO ENJOY ONBOARD



## NEW FALL 2019 ITINERARIES

New Fall 2019 Itineraries announced! Set sail for spectacular ports including Bermuda and Quebec City, Canada. Disney Cruise Line will continue sailing to sun-soaked destinations on Bahamian, Caribbean and Baja cruises! Visit the Disney Vacation Planning Center, Deck 4, and Baja cruises! Visit the Disney Vacation Planning Center, Deck 4, and Baja cruises! Visit the Disney Vacation Planning Center, Deck 4, and Baja cruises! Visit the Disney Vacation Planning Center, Deck 4, and Baja cruises!



## MEMBERSHIP INFORMATION - LOBBY ATRIUM

Stop by anytime during hours of operation to speak with a Disney Vacation Club® Cast Member.

## MEMBER CENTRAL - DISTRICT LOUNGE

Stop by anytime during hours of operation to speak with a Member Services advisor about your Membership questions.

## RELIGIOUS SERVICES

Groups who need a location to practice their faith may contact Guest Services for availability information.

## Connect@Sea

### FREE INTERNET EMBARKATION DAY SPECIAL

Sign up for a free 50 MB Internet package today and enjoy it throughout the cruise! This offer is only available from noon to midnight on the day your cruise begins. On your wireless device, simply find the "DCL-Guest" Wi-Fi Network, go to [www.dclguest.com](http://www.dclguest.com) to create an account, and get your free 50 MB of data to start sharing your memories even before you leave port! If you have any questions, ask our Connect@Sea Expert located at Deck 4, Midship. No purchase necessary. The free 50 MB package per stateroom, but everyone can of the cruise. Only one free package per stateroom, but everyone can of the cruise. Only one free package per stateroom, but everyone can of the cruise. Only one free package per stateroom, but everyone can of the cruise.

## FREE ON DEMAND TV

Watch Disney movies, Hollywood features, ABC shows, and even captioned content, plus much more "On Demand" for FREE in the comfort of your stateroom! Bookmark your movie and come back to watch it later. Press MENU on your stateroom television remote control and follow the prompts.

## SENSES SPA & SALON



### DECK 11, FORWARD

Extension 7-1465

#### RAINFOREST

Come enjoy our serenity lounge, with heated chairs, dry sauna, aromatherapy steam rooms and rainfall, misting showers.

\$169/Couple \$114/Single

#### IONITHERME

Would you like to lose 3-8 inches? Speed up your metabolism, reduce fluid retention and the appearance of cellulite? Firm your muscle tone? If so, this is the best treatment for you! \$155/session

#### ONBOARD ACUPUNCTURE

Naturally effective for pain, arthritis, sea sickness, stress, digestion, weight loss, and much more.

\$150/session or \$360/3 sessions.

#### GOSMILE TEETH WHITENING

Learn about our amazing onboard GO Smile teeth whitening service. Lift the shade of your teeth from 1-6 shades.

\$149 Single, \$258 Couples.

#### REJUVENATION SPA CONSULTATIONS

Ready to enhance your natural beauty? Book your free Facial Rejuvenation consultation with our Rejuvenation Doctor at the Senses Spa.

**AN 18% AUTO GRATUITY IS ADDED TO ALL SENSES SPA SERVICES.**

## MERCHANDISE SHOPPING



### DECK 3, FORWARD

#### STYLISH WATCHES ONBOARD

Whether you need a tool for timekeeping or a fun fashion accessory, visit White Caps and browse a wide selection of stylish watches available. Popular brands include Breitling and Hublot. Deck 3, Forward

#### THE DISNEY PARKS COLLECTION BY PANDORA JEWELRY

The Disney Parks Collection by PANDORA Jewelry features hand-finished .925 sterling silver and 14K gold charms inspired by some of Disney's most beloved characters. Visit White Caps on Deck 3, Forward, where you'll find a specially designed sterling silver charm featuring a Disney Cruise Line ship.

#### BIBBIDI BOBBIDI BOUTIQUE

A makeover fit for a princess! Fairy Godmothers-in-Training are ready with magic and pixie dust to give your Prince and Princess the transformation of a lifetime. Make your reservations by visiting Bibbidi Bobbidi Boutique, Deck 5, Midship or dialing extension 7-9438. Limited space available.

#### LUXURY GOODS JEWELRY

Check out the Crown of Light Diamonds collection at White Caps. Deck 3, Forward.

## SHUTTERS PHOTO GALLERY



### DECK 4, MIDSHIP

#### OUR CRUISE PHOTOS

View your embarkation photos starting at 7:00pm at Shutters, Deck 4, Midship and enter our raffle for a chance to win a 10 Digital Images Photo USB worth \$149.95. Raffle entries are accepted until 10:30 pm tonight.

\*Terms and conditions apply.

Visit Shutters on Deck 4, Midship for all your photographic needs, from digital cameras, batteries, binoculars and accessories.

Ask a friendly photographer about Our Cruise Photos and the incredible value of an unlimited digital photo package, which includes all of your stateroom's photos.

#### PHOTO BOOK

Visit Shutters today and turn your magical vacation memories into an impressive keepsake, a personal one-of-a-kind Photo Book. Fill every page with memories of your cruise vacation.

**PHOTOS ARE AVAILABLE FOR VIEWING ON OUR INTERACTIVE PHOTO KIOSKS APPROXIMATELY FIVE HOURS AFTER BEING TAKEN AND ARE ONLY AVAILABLE FOR PURCHASE DURING THIS CRUISE.**

## IMPORTANT INFORMATION

### Security Notice/

Unaccompanied Minor Ashore All Guests (including children) who wish to disembark or embark the ship are required to present their Key to the World card at the gangway. A photo ID is also required for those Guests who are 18 years of age or older. Guests under the age of 18 are required to have a Parent, Guardian or other responsible adult complete the "Traveling with Minors" section of "My Online Check-In" prior to sailing or sign an authorization form at the Guest Services Desk if they wish to go ashore unaccompanied or with any adult from another stateroom.

### Inclement Weather

For the safety of all Guests, outdoor events may be changed due to unforeseen weather conditions.

### Insect Repellent Advisory

The Centers for Disease Control and Prevention recommends wearing long-sleeved shirts and pants along with insect repellent to protect against mosquito bites and related illnesses when going ashore. Complimentary insect repellent is available on the pier as you exit the ship. Insect repellent is also available for purchase in White Caps. When using both sunscreen and insect repellent, use sunscreen first and apply insect repellent on top of sunscreen.

### Corridor Quiet Hours

As a courtesy to all our Guests, please recognize quiet hallway hours from 10:00 pm to 8:00 am.

### No Reserved Seats Policy

As a courtesy to all our Guests, we kindly advise that the saving of seats is not permitted in the Walt Disney Theatre, and the saving of the sun loungers is not permitted on Deck 11, 12, and 13. Items left unattended will be returned to lost and found at Guest Services, Deck 3 Midship.

### Cold and Flu Reminder

Please wash hands frequently and thoroughly, particularly before meals. Contact the Health Center by dialing 7-1927, should anyone in your party become ill.

### Smoking

For the comfort of our Guests, the following areas are designated as smoking areas:

\*Deck 13, forward, port side by Currents \*Deck 12, aft, port side outdoor area that is accessible through the Meridian Lounge

\*Deck 4, aft, port side from 6:00 pm to 6:00 am only (all of Deck 4 is non-smoking from 6:00 am to 6:00 pm) Smoking is prohibited inside all Guest staterooms and on stateroom verandahs. Guests found smoking in their staterooms or on their verandahs will be charged a \$250 stateroom recovery fee. Electronic cigarettes may only be used in designated smoking areas.

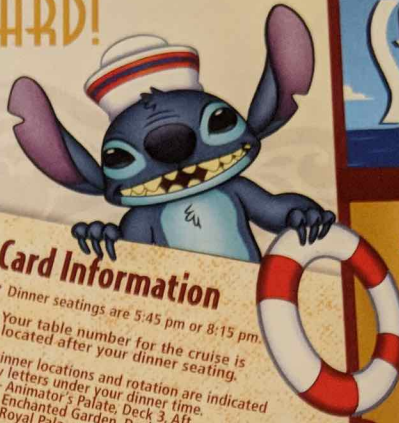
### Walt Disney Theatre

Theatrical performances may use artificial fog, strobe lights, pyrotechnics and other special effects. For the safety of our performers and the comfort of those around you, the use of any photography, video recording device or any electronic equipment is prohibited.

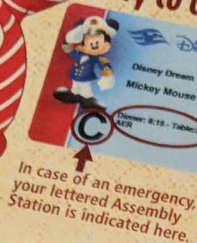
### Verandah Safety

Please do not leave any personal items on your verandah that may be blown overboard or present a fire hazard if left unattended. Do not throw anything over the ship's side. Guests should not sit, lean or climb on the railing or leave children unattended on the verandah. Do not open the verandah and stateroom doors simultaneously as this may create a wind effect and could cause the doors to slam unexpectedly.

# WELCOME ABOARD!



## Key to the World Card Information



In case of an emergency, your lettered Assembly Station is indicated here.

- ✓ Dinner seatings are 5:45 pm or 8:15 pm.
- ✓ Your table number for the cruise is located after your dinner seating.
- ✓ Dinner locations and rotation are indicated by letters under your dinner time.  
A - Animator's Palate, Deck 3, Aft  
E - Enchanted Garden, Deck 2, Midship  
R - Royal Palace, Deck 3, Midship

## SAILING AWAY

It's time to go Sailing Away! Join Mickey and Minnie and the rest of the gang as they welcome you aboard the Disney Dream.

Deck Stage, Deck 11, Midship, 4:30 pm

Neighborhood Bazz (Alcoholic)  
Member-Ship Mugs (Non-Alcoholic)  
**DRINK OF THE DAY**

| Afternoon                    | 1:45 | 2:00 | 2:15 | 2:30 | 2:45 | 3:00 | 3:15 | 3:30 | 3:45 | 4:00 | 4:15 | 4:30 | 4:45 | 5:00 | 5:15 | 5:30 | 5:45 | 6:00 | 6:15 | 6:30 | 6:45 |
|------------------------------|------|------|------|------|------|------|------|------|------|------|------|------|------|------|------|------|------|------|------|------|------|
| CHARACTERS                   |      |      |      |      |      |      |      |      |      |      |      |      |      |      |      |      |      |      |      |      |      |
| FUNNEL VISION                |      |      |      |      |      |      |      |      |      |      |      |      |      |      |      |      |      |      |      |      |      |
| BUENA VISTA THEATRE          |      |      |      |      |      |      |      |      |      |      |      |      |      |      |      |      |      |      |      |      |      |
| FUN FOR ALL AGES             |      |      |      |      |      |      |      |      |      |      |      |      |      |      |      |      |      |      |      |      |      |
| ADULTS                       |      |      |      |      |      |      |      |      |      |      |      |      |      |      |      |      |      |      |      |      |      |
| VIBE 14-17 YEARS OLD         |      |      |      |      |      |      |      |      |      |      |      |      |      |      |      |      |      |      |      |      |      |
| EDGE 11-14 YEARS OLD         |      |      |      |      |      |      |      |      |      |      |      |      |      |      |      |      |      |      |      |      |      |
| OCEANEER LAB 3-12 YEARS OLD  |      |      |      |      |      |      |      |      |      |      |      |      |      |      |      |      |      |      |      |      |      |
| OCEANEER CLUB 3-12 YEARS OLD |      |      |      |      |      |      |      |      |      |      |      |      |      |      |      |      |      |      |      |      |      |

### Mandatory Guest Assembly Drill 4:00 pm

All ship services will be suspended during this time

Please refer to the posted drill instructions prior to heading to your Assembly Station.

You will not need your life jacket for the Guest Assembly Drill.



Your Assembly Station is indicated on your Key To The World card.

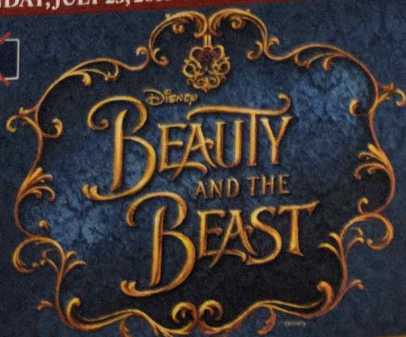
|                         |                         |  |  |  |                                       |                                     |
|-------------------------|-------------------------|--|--|--|---------------------------------------|-------------------------------------|
| Mickey Mouse Balcony    | Goofy Lobby Atrium (V)  | Minnie Mouse Lobby Atrium (H)                            | Wreck-It Ralph (PG) Open Captioning Funnel Vision                | Solo: A Star Wars Story (PG-13) Duration: 2 Hours 15 Minutes | Get Funky with The Vitos Lobby Atrium | Walt Disney Theatre                 |
| Sailing Away Deck Stage | Sailing Away Deck Stage | Membership Information Lobby Atrium (4:30 pm - 10:00 pm) | Music and Martinis with Joe Creamer Pink: Wine and Champagne Bar | Member Central District Lounge (12:30pm - 9:00pm)            | Youth Activities Open House           | Open for Teens Video Game Challenge |
|                         |                         |  |  |  | Youth Activities Open House           | Open for Tweens GAGA Ball           |
|                         | Bingo                   | GAGA Ball  | Meet Your Counselors Ice Breakers                                |  |                                       |                                     |
|                         |                         | Pre-School Fun (3-5 Years Old)                           | Memory Wall  | Star Wars  |                                       |                                     |



| Evening                      | 7:00 | 7:15 | 7:30 | 7:45 | 8:00 | 8:15 | 8:30 | 8:45 | 9:00 | 9:15 | 9:30 | 9:45 | 10:00 | 10:15 | 10:30 | 10:45 | 11:00 | 11:15 | 11:30 | 11:45 | 12:00 |
|------------------------------|------|------|------|------|------|------|------|------|------|------|------|------|-------|-------|-------|-------|-------|-------|-------|-------|-------|
| CHARACTERS                   |      |      |      |      |      |      |      |      |      |      |      |      |       |       |       |       |       |       |       |       |       |
| FUNNEL VISION                |      |      |      |      |      |      |      |      |      |      |      |      |       |       |       |       |       |       |       |       |       |
| BUENA VISTA THEATRE          |      |      |      |      |      |      |      |      |      |      |      |      |       |       |       |       |       |       |       |       |       |
| FUN FOR ALL AGES             |      |      |      |      |      |      |      |      |      |      |      |      |       |       |       |       |       |       |       |       |       |
| ADULTS                       |      |      |      |      |      |      |      |      |      |      |      |      |       |       |       |       |       |       |       |       |       |
| VIBE 14-17 YEARS OLD         |      |      |      |      |      |      |      |      |      |      |      |      |       |       |       |       |       |       |       |       |       |
| EDGE 11-14 YEARS OLD         |      |      |      |      |      |      |      |      |      |      |      |      |       |       |       |       |       |       |       |       |       |
| OCEANEER LAB 3-12 YEARS OLD  |      |      |      |      |      |      |      |      |      |      |      |      |       |       |       |       |       |       |       |       |       |
| OCEANEER CLUB 3-12 YEARS OLD |      |      |      |      |      |      |      |      |      |      |      |      |       |       |       |       |       |       |       |       |       |

YOUTH ACTIVITIES OPEN HOUSE  
A non-secured program with activities for families, adults and children to enjoy together.

MONDAY, JULY 23, 2018 - PORT CANAVERAL, FLORIDA



WALT DISNEY THEATRE  
DECK 3 & 4, FORWARD  
6:15 pm & 8:30 pm

As a courtesy to all Guests, we kindly advise that the saving of seats is not permitted in the Walt Disney Theatre.

Assistance available at the entrance to the Walt Disney Theatre 30 minutes prior to show time.

## Character Appearances

### SAILING AWAY

Deck 11 Stage - 4:30 pm

### MICKEY MOUSE

Balcony  
5:15 pm, 7:15 pm & 9:45 pm

### GOOFY

Lobby Atrium (V) - 5:15 pm

### MINNIE MOUSE

Lobby Atrium (H) - 5:30 pm

### BELLE

Lobby Atrium (V) - 7:30 pm

### PLUTO

Lobby Atrium (H) - 7:30 pm

### RAPUNZEL

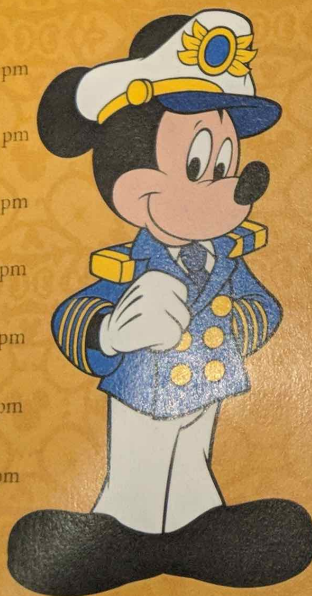
Lobby Atrium (V) - 9:30 pm

### DONALD DUCK

Lobby Atrium (H) - 9:30 pm

### CHIP & DALE

Preludes - 10:00 pm



(H) Hallway - (S) Starboard Side - (P) Port Side - (V) Vestibule

For details of daily Disney character appearances, refer to the character line on your Navigator Grid, or the digital character board in the Lobby Atrium.

Lines close 15 minutes after advertised start time.

## SHIP DIRECTORY

### YOUTH ACTIVITIES

|                            |              |                    |
|----------------------------|--------------|--------------------|
| DISNEY'S OCEANEER CLUB     | DECK 5, MID  | 12:00 PM - 3:30 PM |
| DISNEY'S OCEANEER LAB      | DECK 5, MID  | 4:30 PM - 12:00 AM |
| EDGE                       | DECK 13, MID | 12:00 PM - 3:30 PM |
| IT'S A SMALL WORLD NURSERY | DECK 5, MID  | 4:30 PM - 1:00 AM  |
| VIBE                       | DECK 4, FWD  | 12:00 PM - 3:30 PM |
|                            |              | 4:30 PM - 1:00 AM  |

### POOLS & MORE

\* Children under 12 must have adult supervision in pool areas.

|                       |              |                     |
|-----------------------|--------------|---------------------|
| AQUADUCK              | DECK 12, AFT | 12:00 PM - 3:00 PM  |
|                       |              | 4:30 PM - 11:00 PM  |
| DONALD'S POOL         | DECK 11, MID | 12:00 PM - 3:15 PM  |
|                       |              | 6:00 PM - 11:00 PM  |
| FUNNEL PUDDLE         | DECK 12, FWD | 12:00 PM - 6:00 PM  |
| MICKEY'S POOL         | DECK 11, MID | 12:00 PM - 3:15 PM  |
|                       |              | 4:30 PM - 11:00 PM  |
| MICKEY'S SLIDE        | DECK 11, MID | 12:00 PM - 3:15 PM  |
|                       |              | 4:30 PM - 7:00 PM   |
| NEMO'S REEF           | DECK 11, MID | 12:00 PM - 3:15 PM  |
|                       |              | 4:30 PM - 7:00 PM   |
| QUIET COVE POOL (18+) | DECK 11, FWD | 12:00 PM - 11:00 PM |
| SATELLITE FALLS (18+) | DECK 13, FWD | 12:00 PM - 8:00 PM  |

Please note, "selfie sticks" are not permitted in any aquatic area.

Complimentary pool vests are available for children to use in the pools onboard. Located on the pool deck.

### RECREATION

|                             |                 |                     |
|-----------------------------|-----------------|---------------------|
| GOLF/SPORTS SIMULATOR       | DECK 13, AFT    | 12:00 PM - 3:30 PM  |
|                             |                 | 4:30 PM - 6:00 PM   |
| GOOFY GOLF                  | DECK 13, AFT    | 5:30 PM - 11:00 PM  |
| GOOFY'S SPORTS DECK         | DECK 13, AFT    | 12:00 PM - 6:00 PM  |
| MIDSHIP DETECTIVE AGENCY    | DECK 2 & 5, MID | 11:00 AM - 11:00 PM |
| PORT ADVENTURES DESK        | DECK 5, MID     | 12:00 PM - 3:30 PM  |
|                             |                 | 4:30 PM - 8:30 PM   |
| SENSES FITNESS CENTER (18+) | DECK 11, FWD    | 12:00 PM - 10:00 PM |

### GENERAL INFORMATION

|                          |                 |                     |
|--------------------------|-----------------|---------------------|
| BUENA VISTA THEATRE      | DECK 4 & 5, MID | SHOWTIMES           |
| CONNECT@SEA DESK         | DECK 4, MID     | 1:00 PM - 3:30 PM   |
|                          |                 | 7:00 PM - 10:00 PM  |
| DISNEY VACATION CLUB     | DECK 4, MID     | 5:00 PM - 10:00 PM  |
| DISNEY VACATION PLANNING | DECK 4, MID     | 5:00 PM - 10:00 PM  |
| GUEST SERVICES           | DECK 3, MID     | 24 HOURS            |
| HAIRBRAIDING             | DECK 11, MID    | 5:00 PM - 10:00 PM  |
| MEDICAL HEALTH CENTER    | DECK 1, FWD     | 4:30 PM - 7:00 PM   |
| PRELUDES                 | DECK 3, FWD     | 5:45 PM - 9:00 PM   |
| SENSES SPA AND SALON     | DECK 11, FWD    | 12:00 PM - 10:00 PM |
| SHUTTERS PHOTO GALLERY   | DECK 4, MID     | 7:00 PM - 11:00 PM  |
| WALT DISNEY THEATRE      | DECK 3 & 4, FWD | SHOWTIMES           |

### SHOPPING

|                          |              |                    |
|--------------------------|--------------|--------------------|
| BIBBIDI BOBBIDI BOUTIQUE | DECK 5, MID  | 12:00 PM - 3:00 PM |
|                          |              | 5:00 PM - 9:00 PM  |
| MICKEY'S MAINSAIL        | DECK 3, FWD  | 5:45 PM - 11:00 PM |
| SEA TREASURES            | DECK 3, FWD  | 5:45 PM - 11:00 PM |
| VISTA GALLERY            | DECK 4, MID  | 5:45 PM - 11:00 PM |
| WHITE CAPS               | DECK 3, FWD  | 5:45 PM - 11:00 PM |
| WHOZITS & WHATZITS       | DECK 11, MID | 12:00 PM - 3:15 PM |
|                          |              | 4:30 PM - 6:00 PM  |
|                          |              | 9:00 PM - 11:00 PM |

DUE TO PORT REGULATIONS, WHEN THE SHIP IS DOCKED, THE STORES MUST REMAIN CLOSED.

## EVENING ATTIRE

Cruise Casual

## WEATHER FORECAST

Today: Partly Cloudy  
High: 88°F/31°C

## DINING & LOUNGES

### LUNCH

|                     |              |                    |
|---------------------|--------------|--------------------|
| CABANAS             | DECK 11, AFT | 11:45 AM - 3:00 PM |
| ENCHANTED GARDEN    | DECK 2, MID  | 12:00 PM - 2:00 PM |
| FILMORE'S FAVORITES | DECK 11, MID | 12:00 PM - 3:30 PM |
|                     |              | 4:30 PM - 6:00 PM  |
| LUIGI'S PIZZA       | DECK 11, MID | 12:00 PM - 3:30 PM |
|                     |              | 4:30 PM - 6:00 PM  |
| TOW MATER'S GRILL   | DECK 11, MID | 12:00 PM - 3:30 PM |
|                     |              | 4:30 PM - 6:00 PM  |

### DINNER

|  |              |                    |
|--|--------------|--------------------|
| ANIMATOR'S PALATE                              | DECK 3, AFT  | 5:45 PM & 8:15 PM  |
| ENCHANTED GARDEN                               | DECK 2, MID  | 5:45 PM & 8:15 PM  |
| PALO (18+) (Reservations Req. & Non-Fee Appmt) | DECK 12, AFT | 8:00 PM - 8:30 PM  |
| REMY (18+) (Reservations Req. & Non-Fee Appmt) | DECK 12, AFT | 8:00 PM - 9:00 PM  |
| ROYAL PALACE                                   | DECK 3, MID  | 5:45 PM & 8:15 PM  |
| TOW MATER'S GRILL                              | DECK 11, MID | 6:00 PM - 11:00 PM |

### LATE NIGHT SNACKS

|               |              |                     |
|---------------|--------------|---------------------|
| LUIGI'S PIZZA | DECK 11, MID | 9:30 PM - 12:00 AM  |
| THE DISTRICT  | DECK 4, AFT  | 10:45 PM - 11:45 PM |

### ADDED FEATURES

|                               |              |                    |
|-------------------------------|--------------|--------------------|
| BEVERAGE STATION              | DECK 11, MID | 24 HOURS           |
| EYE SCREAM                    | DECK 11, MID | 11:45 AM - 3:30 PM |
|                               |              | 4:30 PM - 11:30 PM |
| ROOM SERVICE                  | DIAL 0       | 24 HOURS           |
| VANELLOPE'S SWEETS AND TREATS | DECK 11, AFT | 11:30 AM - 3:30 PM |
|                               |              | 4:30 PM - 10:30 PM |

### ENTERTAINMENT - LOUNGES - BARS

Adults must be 21 and older to consume alcoholic beverages.

|                                   |              |                     |
|-----------------------------------|--------------|---------------------|
| BON VOYAGE                        | DECK 3, MID  | 11:30 AM - 11:00 PM |
| COVE BAR (18+)                    | DECK 11, FWD | 11:30 AM - 10:30 PM |
| COVE CAFE (18+)                   | DECK 11, FWD | 11:30 AM - 12:00 AM |
| CURRENTS (18+)                    | DECK 13, FWD | 11:30 AM - 12:00 AM |
| D LOUNGE                          | DECK 4, MID  | SHOWTIMES           |
| EVOLUTION (18+ AFTER 9:00 PM)     | DECK 4, AFT  | 9:30 PM - 2:00 AM   |
| FROZONE TREATS                    | DECK 11, MID | 11:30 AM - 6:00 PM  |
| MERIDIAN (18+)                    | DECK 12, AFT | 5:00 PM - 12:00 AM  |
| OUTLOOK (18+)                     | DECK 14, MID |                     |
| PINK WINE AND CHAMPAGNE BAR (18+) | DECK 4, AFT  | 5:00 PM - 12:00 AM  |
| SENSES JUICE BAR                  | DECK 11, FWD | 11:30 AM - 8:00 PM  |
| SKYLINE (18+)                     | DECK 4, AFT  | 5:00 PM - 12:00 AM  |
| VISTA CAFE                        | DECK 4, MID  | 11:30 AM - 10:30 PM |
| WAVES                             | DECK 12, AFT | 11:30 AM - 6:00 PM  |

Public Health Advisory: Consuming raw or under-cooked meats, poultry, seafood, shellfish, or eggs may increase your risk for food borne illness, especially if you have certain medical condition.



### MIDSHIP DETECTIVE AGENCY

Use your detective know-how and our special detective "badge" to search the ship and catch your criminal! Deck 2 & 5, Midship Kiosks.

Disney Cruise Line  
**PORT ADVENTURES**  
Visit the Port Adventures Desk,  
Deck 5, Midship, for bookings & questions.

### IMPORTANT NUMBERS

Fire/Security: 7-3001  
Medical Emergency: 7-3000  
Health Center: 7-1927