



VOYAGE NAVIGATOR



SATURDAY
JUNE 2, 2018

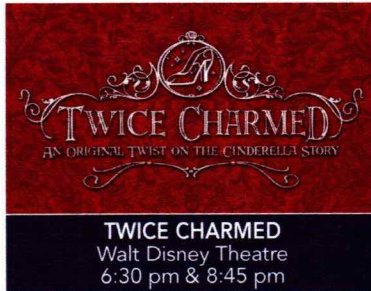
TO

SATURDAY
JUNE 9, 2018

CRUISE HIGHLIGHTS

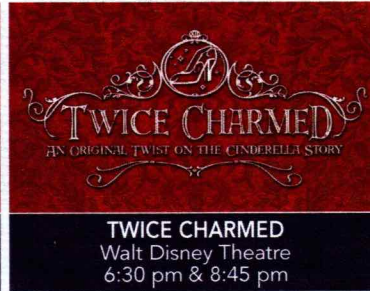
SATURDAY

BARCELONA
Port Departure: 5:00 pm
All Aboard: 4:00 pm
Attire: Cruise Casual



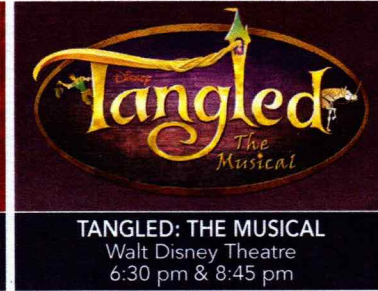
SUNDAY

DAY AT SEA
Attire: Formal



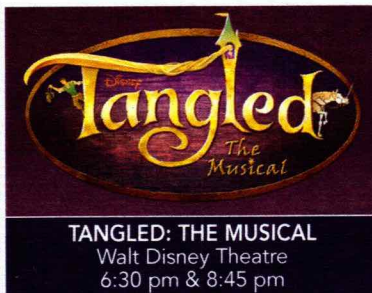
MONDAY

NAPLES (POMPEII)
All Ashore: 7:30 am
All Aboard: 6:00 pm
Attire: Cruise Casual



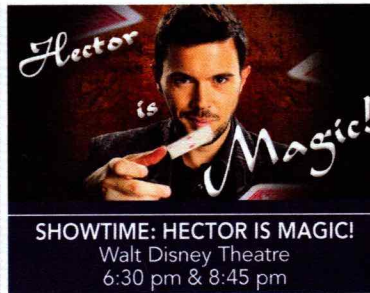
TUESDAY

CIVITAVECCHIA (ROME)
All Ashore: 7:00 am
All Aboard: 6:45 pm
Attire: Cruise Casual



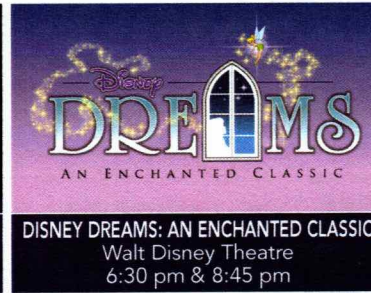
WEDNESDAY

LIVORNO (FLORENCE)
All Ashore: 7:00 am
All Aboard: 6:45 pm
Attire: Pirate or Cruise Casual



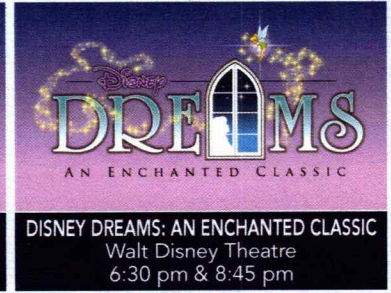
THURSDAY

VILLEFRANCHE (MONTE CARLO / NICE)
All Ashore: 7:30 am
All Aboard: 5:45 pm
Attire: Semi Formal



FRIDAY

DAY AT SEA
Attire: Cruise Casual



Subject to change.

WELCOME ABOARD!

YOUR STATEROOM & LUGGAGE

Staterooms will be ready at 1:30 pm. To allow your Stateroom Host/ess time to prepare your room, please do not remove the blue stanchion straps. Stateroom hosts will deliver luggage throughout the day until 5:30 pm.

STATEROOMS WITH BUNK BEDS

Bunk beds are recessed into the ceiling and will be prepared during evening turndown service by your Stateroom Host/ess.

STATEROOM SAFE

Each stateroom is equipped with a secured storage safe. Instructions for use are located on the safe.

TO CHANGE DINING ASSIGNMENT

Requests for different seating times will be taken today:

- 12:30 pm - 3:00 pm; Book in Promenade Lounge, Deck 3, Aft or please dial 7-1831 and leave a voicemail.

PALO DINING RESERVATIONS

Reservations are required and will be taken on a first come basis today:

- 12:30 pm - 3:00 pm in Promenade Lounge, Deck 3, Aft, or please dial 7-6843 and leave a voicemail.

Adult Exclusive Dining Opportunity! Guests are invited to make 2 dinner reservations at our adult-exclusive restaurant, Palo. This includes one reservation on embarkation evening and one more on another night of the cruise.

DINNER

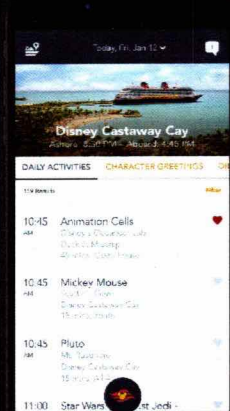
600 pm - First seating 8:30 pm - Second seating

Please check your Key To The World Card for details of your dining rotation, and bring it to your specific dining location. There is no need to wait in line prior to dinner. Dining Rooms open at designated seating times and your table is reserved each night of your cruise.

A = Animator's Palate, Deck 4, Aft L = Lumière's, Deck 3, Midship R = Rapunzel's Royal Table, Deck 3, Aft

DOWNLOAD THE NEW
**DISNEY CRUISE LINE
NAVIGATOR APP**
BEFORE YOU SAIL AWAY

Available
on iOS
and
Android



Create the most memorable experiences during your Disney Cruise Line vacation with Port Adventures! Our Port Adventures are designed for you to see the best our ports have to offer. Stop by the Port Adventures Desk, Deck 3, Midship where our friendly team will be happy to assist you plan your adventure!
There is an adventure for everyone on your Disney Magic® vacation.

IMPORTANT NUMBERS Fire/Security: 7-3001 Medical Emergency: 7-3000 Health Center: 7-1927

ADULT ACTIVITY HIGHLIGHTS



1820 SOCIETY (GUESTS 18-20 YEARS ONLY)
1820 Society is an exclusive option for young adult Guests. Come meet fellow passengers and learn about the excellent activities that the Disney Magic offers to create the perfect cruise experience.



80'S FLASHBACK
The 80's are back! Join your Cruise Staff team, in testing your 80's knowledge in this high energy 80's revival.



KRAZY KARAOKE
Take to the stage, grab a microphone and sing your favorite tunes with your Club Host and DJ.



MATCH YOUR MATE
It's time to play everyone's favorite couples game show, Match Your Mate!



Senses Spa & Salon has a variety of seminars and fitness classes available throughout the cruise. Pamper yourself with therapeutic spa treatments of heat, steam, rain and water in luxurious and tranquil private rooms. Deck 9, Forward.

BEVERAGE SEMINARS

Your Beverage team has a host of tastings and seminars to entertain and educate you. Stop by Lumière's, Deck 3, Midship, 12:00 - 3:00 pm or Guest Services, Deck 3, Midship after today to pre-book these experiences (nominal fee applies).

Mixology - Stem to Stern Wine Tasting - Martini Tasting - Champagne Tasting - Beer Tasting - Cognac Tasting - Whisky Tasting - Amari Tasting - Tequila & Margarita Tasting - Chocolate & Liquor Tasting - Rum Tasting

FUN FOR ALL AGES HIGHLIGHTS



ADVENTURES AWAY
Earn your status as V.I.P. sailors as your Cruise Director, your Disney Pals, and the Cruise Staff officially begin your "Adventures Away".



A PIRATE'S LIFE FOR ME
Calling all Pirates, we be! If ye have an adventurous spirit or pirate savvy, come spin the "Wheel of Destiny" fer a treasure trove of fun be ripe for the taking in this action packed pirate game show.



DISNEY JUNIOR PIRATE & PRINCESS DANCE PARTY
Calling all Pirates and Princesses! Come join us for a family dance party featuring music and fun activities from Jake & the Neverland Pirates and Sofia the First. Whether you favor tiaras or treasure chests, there's something for you at our Disney Junior Pirate & Princess Dance Party!



DISNEY VACATION CLUB GROUP PREVIEW
Join us for our interactive group presentation to learn about taking magical vacations year after year! For more information, please see a Disney Vacation Club Cast Member on Deck 4, Midship, or call 7-2805 from your stateroom phone.



FAMILY SUPERSTAR KARAOKE
Join your Cruise Staff and sing along to your favorite song, fun for everyone.



JACK-JACK'S INCREDIBLE DIAPER DASH
Calling all baby cruisers! It's time to take to the mat to see who's the fastest crawler of the seven seas! Register your baby 15 minutes prior to the big race.



JACKPOT BINGO
CASH prizes and raffle prizes to be won in our family friendly Bingo sessions with your Cruise Staff. Those under the age of 18 must be accompanied by an adult to play.



PIRATES IN THE CARIBBEAN DECK PARTY
Yer Disney Friends are all set for a swashbucklin' good time! It's a Pirate Celebration, me hearties! Hoist yourself to Deck 9 to enjoy a rowdy buccaneer bash we call Pirates IN the Caribbean Deck Party. (Weather Permitting)



SALUDOS AMIGOS FIESTA
Come see what Donald and his friends are up to this time. Bring the family out to this interactive dance party featuring fun Latin music! Your family will learn to salsa, merengue and just have a Latin good time!



SO YOU THINK YOU KNOW YOUR FAMILY?
This fun-filled family game show is always full of surprises. Find out how well you know, or don't know your family!



THE INSIDE OUT GAME
Make new memories using the memories you already have. Embrace joy and play against anger, fear & disgust in this one-of-a-kind game show based on the Pixar movie Inside Out!



WAKE UP WITH DISNEY JUNIOR
What happens when you experience unlimited fun with your favorite Disney Junior shows? You get an exciting dance party designed especially for preschoolers ages seven and under.



WHO WANTS TO BE A MOUSEKETEER?
Your chance to get into the "hot seat" and win limited edition prizes. Or, play along as part of our live studio audience.

Please check your daily Personal Navigator for all times and locations.

FEATURED VARIETY ACTS THIS VOYAGE



THE MAGIC & ILLUSION OF HECTOR IS MAGIC!
Hector is a young and charismatic illusionist from Spain. His jaw-dropping illusions and his stories will make you fly to a world where everything is possible. He has been traveling the world with his show for the last 10 years including cruise ships, theme parks, theaters and some of the most important TV shows. Get ready to be amazed and amused.



THE VENTRILOQUISM OF JOHN KIMMONS
Whether you are six or sixty, you are sure to enjoy the Magical Ventriloquism of John Kimmons! The act is fresh and different, not to mention good clean family entertainment. Watch and laugh as a hand towel becomes a shrieking baby and drawings come to life, but watch out - you may find yourself part of the show!



THE MUSICAL COMEDY OF GRAFFITI CLASSICS
Graffiti Classics was founded in 1997 by Cathal O'Duill. Whilst street-performing in Covent Garden (London) he realised that classical music could be made fun for any audience through interaction and comedy. Developing a unique antidote to the preconceptions of classical music as stuffy and elitist, Graffiti Classics succeed in bringing it to anyone and everyone whatever their age.



THE PERCUSSION & COMEDY OF JUNNK
JunNk use bins, bottles, ladders and drainpipes to create a lively, hilarious and utterly enthralling fast paced show, providing a fresh outlook on today's modern entertainment scene.

YOUTH ACTIVITIES INFO & HIGHLIGHTS



Dine & Play

As a convenience for families dining at 8:15 pm, our Youth Activities Counselors will be available at 9:15 pm at the entrance of Lumiere's and at 9:30 pm at the entrance of Animator's Palate and Rapunzel's Royal Table to bring registered children to join the fun in Disney's Oceaneer Club and Disney's Oceaneer Lab.

Youth Activities Open House

Open House is an opportunity for all to come and participate in a variety of exciting activities and free time in the Oceaneer Club, Oceaneer Lab, Edge and Vibe throughout the cruise. During these times secured programming will still be offered in the other venue for those looking to check their children into care.

Youth Activities Venue Tour

Come and take a tour of Disney's Oceaneer Club and Disney's Oceaneer Lab. This informative tour will give you the information you need to know about our exciting spaces and activities offered for children ages 3-12. Please see your Personal Navigator or the Navigator App for times.



3 - 12 years old

STITCH'S GREAT ADVENTURE

Stitch needs your help in trying to capture ten of his lost cousins before they cause all kinds of problems on the ship!

MICKEY'S PUZZLE PLAYTIME

Come and play with Mickey & friends as they share their favorite games, puzzles and dances!

DISNEY ROYAL ACADEMY

Hear ye! Hear ye! All boys and girls are invited to become part of the Oceaneer Royal Court. Learn all about your favorite Disney Prince and Princesses, create your own royal garb and become one of the most powerful in the land. Disney Royal Academy is in session!



3 - 12 years old

SUPER SLOPPY SCIENCE

Join Professor Make-O-Mess in some of the most extreme experiments you will ever see in the world of Super Sloppy Science!

PLUTO'S PAJAMA PARTY

Bring the little ones in their pajamas but there will be anything but sleep when Pluto and friends host the ultimate slumber party!

PISTON CUP

It's Dinoco time and you're part of the pit crew! Design your own race car and see if you've got what it takes to end up in the winner's circle!



11 - 14 years old

HEROES VS. VILLAINS

Join your favorite hero or villain team on a series of activities that will take place throughout the cruise.

THAT'S HILARIOUS

Ever wanted to show off your comedy skills? Then be a part of the cast for the crazy improv show "That's Hilarious" and put on a live show for your friends.



14 - 17 years old

HAUNTED MANSION FAMILY PORTRAITS

Grim grinning ghosts come out to socialize as teens get transformed in a ghoulish photo shoot that is guaranteed to bring the spooks out for a swinging wake!

HOMECOMING

Come and join your fellow teens in our very own version of "Homecoming" and dance the night away.

BUENA VISTA THEATRE

Deck 5, Midship

FEATURE MOVIES THIS VOYAGE

SATURDAY - BARCELONA

6:00 pm	PG	Coco	3D
8:30 pm	PG	Coco	3D
10:45 pm	PG-13	Avengers: Infinity War	

SUNDAY - DAY AT SEA

9:00 am	PG	Family Movie Fun Time: Coco	
11:30 am	PG-13	Black Panther	3D
2:15 pm	PG	A Wrinkle in Time	
5:00 pm	PG-13	Avengers: Infinity War	3D
8:00 pm	PG-13	Avengers: Infinity War	3D
10:45 pm	PG-13	Black Panther	

MONDAY - NAPLES (POMPEII)

8:45 am	PG-13	Black Panther	3D
11:15 am	PG	Family Movie Fun Time: Coco	
2:15 pm	PG-13	Avengers: Infinity War	
5:30 pm	PG-13	Solo: A Star Wars Story	
8:15 pm	PG-13	Solo: A Star Wars Story	
11:15 pm	PG-13	Thor: Ragnarok	

TUESDAY - CIVITAVECCHIA (ROME)

9:15 am	PG	A Wrinkle in Time	
12:00 pm	PG-13	Thor: Ragnarok	3D
2:30 pm	PG-13	Black Panther	
5:30 pm	PG-13	Solo: A Star Wars Story	
8:15 pm	PG-13	Solo: A Star Wars Story	
11:00 pm	PG-13	Avengers: Infinity War	3D

WEDNESDAY - LIVORNO (FLORENCE)

9:00 am	PG	Coco	Open Captioning
11:30 am	PG-13	Black Panther	3D
2:15 pm	PG-13	Solo: A Star Wars Story	3D
5:30 pm	PG	A Wrinkle in Time	
8:00 pm	PG	A Wrinkle in Time	
11:00 pm	PG-13	Solo: A Star Wars Story	

THURSDAY - VILLEFRANCHE (MONTE CARLO / NICE)

11:30 am	PG	A Wrinkle in Time	3D
2:15 pm	PG-13	Solo: A Star Wars Story	
5:00 pm	PG-13	Avengers: Infinity War	
8:00 pm	PG-13	Avengers: Infinity War	
11:00 pm	PG-13	Black Panther	

FRIDAY - DAY AT SEA

8:45 am	PG-13	Solo: A Star Wars Story	Open Captioning
11:30 am	PG-13	Avengers: Infinity War	
2:30 pm	PG	Coco	3D
5:00 pm	PG-13	Avengers: Infinity War	
8:00 pm	PG-13	Avengers: Infinity War	
11:00 pm	PG-13	Solo: A Star Wars Story	

Subject to change.



MORE TO ENJOY ONBOARD



NEW FALL 2019 ITINERARIES

New Fall 2019 Itineraries announced! Set sail for spectacular ports including Bermuda and Quebec City, Canada. Disney Cruise Line will continue sailing to sun-soaked destinations on Bahamian, Caribbean and Baja cruises! Visit the Disney Vacation Planning, Deck 4, Midship for more information. Disney Vacation Planning tends to get busy on the last day of sailing. Don't miss the opportunity to plan your next Disney vacation.



DISNEY VACATION CLUB® MEMBERS PREVIEW

Join us as we welcome you onboard with a fun, interactive event where you can catch the latest updates at Disney Vacation Club! Please see a Disney Vacation Club Cast Member on Deck 4, Midship or call 7-2805 from your stateroom phone for more information.

PORT SHOPPING INFORMATION

Meet Saige, your Port Shopping Guide, for hints, tips and know how when it comes to shopping ashore this cruise! Saige has great recommendations for the whole family and will show you how to maximize your time in our ports of call with money saving tips! Visit Saige at the Port Shopping Desk, Deck 3, Midship.



Connect@Sea

CONNECT@SEA

We are now offering a NEW and improved Internet service to stay connected on your cruise like no other in the industry! Internet packages range from \$0.25 per MB - \$89.00 (1000 MB package). For more information contact your Connect@Sea Expert or Guest Services onboard. Possible service interruptions due to area configuration.

CURRENCY EXCHANGE

Euros will be available for exchange at Guest Services, Deck 3, Midship, 24 hrs a day. Not all currencies will be exchanged onboard, so please check with Guest Services for further information.

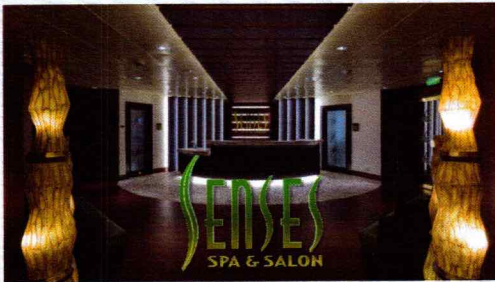
RELIGIOUS SERVICES

Groups who need a location to practice their faith may contact Guest Services for availability information.

TRANSPORTATION INFORMATION

Should you wish to purchase transportation to the Barcelona airport, kindly proceed to Guest Services on Deck 3, Midship for further assistance.

SENSES SPA & SALON



DECK 9, FORWARD
Extension 7-1465

RAINFOREST

Come enjoy our serenity lounge, with heated chairs, aromatherapy steam rooms and rainfall, misting showers.
Couples Cruise Pass - \$193 ~ Single Cruise Pass - \$144

IONITHERMIE

Lose between 1 – 8 inches? Speed up your metabolism. Firm muscle tone. Improve appearance of cellulite. \$155/1 session or \$497/5 sessions.

ONBOARD ACUPUNCTURE

Naturally effective for pain, arthritis, sea sickness, stress, digestion, weight loss, and much more.
\$150/session or \$550/5 sessions.

ELEMIS BIOTEC

8 different Facial treatments available based on your specific concerns or needs. Technology turbo charges the concept of touch. The clinically proven result is visibly healthy, nourished and energized skin.

REJUVENATION SPA CONSULTATIONS

Ready to enhance your natural beauty? Book your free Facial Rejuvenation consultation with our Rejuvenation Doctor at the Senses Spa.

AN 18% AUTO GRATUITY IS ADDED TO ALL SENSES SPA SERVICES.

MERCHANDISE SHOPPING



DECK 4, FORWARD

THE CROWN JEWELRY

Visit The Crown Jewelry, located on Deck 4, Midship, to discover stylish timepieces and fine jewelry. Discover the Crown of Light Diamonds, Safi Kilima Tanzinites and John Hardy's handcrafted jewelry, as well as luxury watches by Hublot and Breitling.

EUROPEAN DOONEY & BOURKE

Treasure the memories made this voyage on the Disney Magic with the specially designed European Dooney & Bourke bag. Available in the onboard shops, Deck 4, Forward.

HELPFUL SHOPPING TIP

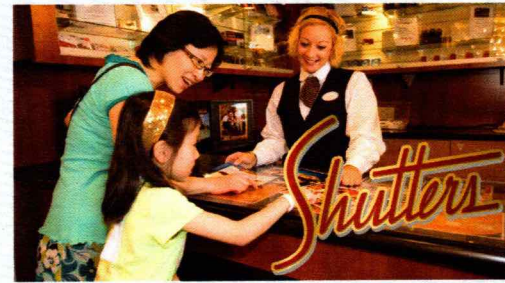
While shopping onboard, you may collect your items from both stores before proceeding to checkout at any register. No need to have to wait in line in each store to pay for your items separately! Mickey's Mainsail and White Caps, Deck 4, Forward.

BIBBIDI BOBBIDI BOUTIQUE

A makeover fit for a princess! Fairy Godmothers-in-Training are ready with magic and pixie dust to give your Prince and Princess the transformation of a lifetime. Make your reservations by visiting Bibbidi Bobbidi Boutique, Deck 10, Forward, Port Side, or dialing extension 7-1492. Limited space available.

DUE TO PORT REGULATIONS, WHEN THE SHIP IS DOCKED, THE STORES WILL REMAIN CLOSED.

SHUTTERS PHOTO GALLERY



DECK 4, AFT

WELCOME ABOARD RAFFLE

Your embarkation photos will be available for viewing at 6:30pm. Visit Shutters on Deck 4 AFT and drop your raffle coupon for a chance to win a 10 Digital Photo package with a \$149.95 value.

OUR CRUISE PHOTOS DIGITAL!

Ask a friendly photographer about our Cruise digital Photos! And the incredible value of an All Inclusive digital photo package, which includes all of your stateroom's photos. Visit Shutters today as supplies are limited. *Terms and conditions apply.

PRIVATE STUDIO PORTRAITURE

Book our exclusive and contemporary Private Studio experience today and capture these memories. No obligation to purchase. Black and White only.

PHOTO BOOK

Turn your magical vacation memories into an impressive keepsake, a personal one of a kind Photo Book. Fill every page with memories of your cruise vacation. Orders close at 10:00 pm on the last day of the cruise.

PHOTOS ARE AVAILABLE FOR VIEWING ON OUR INTERACTIVE PHOTO KIOSKS APPROXIMATELY FIVE HOURS AFTER BEING TAKEN AND ARE ONLY AVAILABLE FOR PURCHASE DURING THIS CRUISE.

IMPORTANT INFORMATION

Security Notice

All Guests (including children) who wish to disembark the ship are required to present their Key to the World card at the gangway. A photo ID is also required for those Guests who are 18 years of age or older. Guests under the age of 18 are required to have a parent, guardian or other responsible adult sign an authorization form at the Guest Service Desk if they wish to go ashore unaccompanied or with any adult from another stateroom.

Inclement Weather

For the safety of all Guests, outdoor events may be changed due to unforeseen weather conditions.

Insect Repellent Advisory

The Centers for Disease Control and Prevention recommends wearing long-sleeved shirts and pants along with insect repellent to protect against mosquito bites and related illnesses when going ashore. Complimentary insect repellent is available on the pier as you exit the ship. Insect repellent is also available for purchase in White Caps. When using both sunscreen and insect repellent, use sunscreen first and apply insect repellent on top of sunscreen.

Corridor Quiet Hours

As a courtesy to all our Guests, please recognize quiet hallway hours from 10:00 pm til 8:00 am.

Environmental Message

With Disney's commitment to the Environment, please refrain from throwing anything over the Ship's side. Thank you!

No Reserved Seats Policy

As a courtesy to all our Guests, we kindly advise that the saving of seats is not permitted in the Walt Disney Theatre, and the saving of the sun loungers is not permitted on Deck 9 and 10. Items left unattended will be returned to lost and found at Guest Services, Deck 3 Midship.

Cold and Flu Reminder

Please wash hands frequently and thoroughly, particularly before meals. Contact the Health Center by dialing 7-1927, should anyone in your party become ill.

Smoking

For the comfort of our Guests, the following areas are designated as smoking areas:

*Deck 9, Forward, Port Side by 6:00 am only (all of Deck 4 is non-smoking from 6:00 am to 6:00 pm)
Smoking is prohibited inside all Guest staterooms and on stateroom verandahs. Guests found smoking in their staterooms or on their verandahs will be charged a \$250 stateroom recovery fee. Electronic cigarettes may only be used in designated smoking areas.

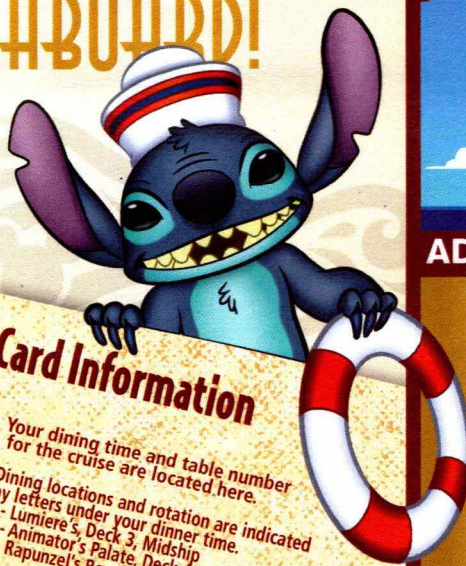
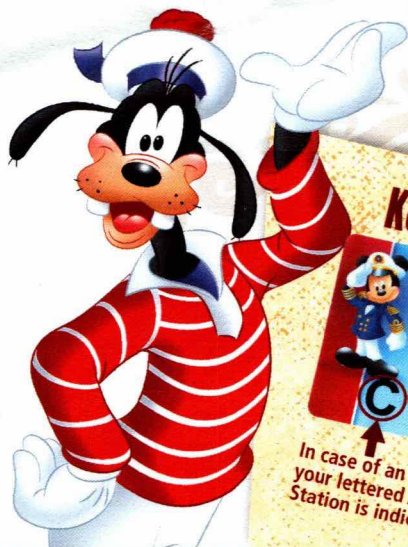
Walt Disney Theatre

Theatrical performances may use artificial fog, strobe lights, pyrotechnics and other special effects. For the safety of our performers and the comfort of those around you, the use of any photography, video recording device or any electronic equipment is prohibited.

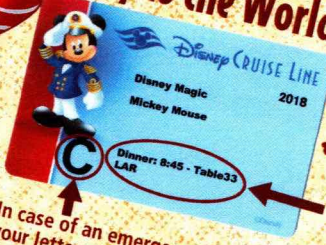
Verandah Safety

Please do not leave any personal items on your verandah that may be blown overboard or present a fire hazard if left unattended. Guests should not sit, lean or climb on the railing or leave children unattended on the verandah. Do not open the verandah and stateroom doors simultaneously as this may create a wind effect and could cause the doors to slam unexpectedly.

WELCOME ABOARD!



Key to the World Card Information



In case of an emergency, your lettered Assembly Station is indicated here.

- Your dining time and table number for the cruise are located here.
- Dining locations and rotation are indicated by letters under your dinner time.
 - L - Lumiere's, Deck 3, Midship
 - A - Animator's Palate, Deck 4, Aft
 - R - Rapunzel's Royal Table, Deck 3, Aft

ADVENTURES AWAY

Earn your status as V.I.P. sailors! Join your Cruise Director, Darren, your Disney pals and your Cruise Staff as we officially begin your "Adventures Away."

Deck Stage, Deck 9, Midship, 5:00 pm

Bay Breeze (Alcoholic)
Bora Shake (Non-Alcoholic)
DRINK OF THE DAY

Afternoon	2:00	2:15	2:30	2:45	3:00	3:15	3:30	3:45	4:00	4:15	4:30	4:45	5:00	5:15	5:30	5:45	6:00	6:15	6:30	6:45	7:00							
FUNNEL VISION	Poolside Jams with Cruise Staff DJ Deck 9 Stage								Mandatory Guest Assembly Drill 4:30 pm (All Guests must attend) All ship services will be suspended during this time. Refer to the posted drill instructions on the back of your stateroom door prior to heading to Deck 4. Please bring your Key to the World Card. You will not need your life jacket for the Guest Assembly Drill. Your Assembly Station is indicated on your Key To The World card.								Monsters, Inc. (G)				Coco (PG)				Donald Lobby Atrium (P)			
BUENA VISTA THEATRE	The Incredibles 2 Sneak Preview		The Incredibles 2 Sneak Preview		The Incredibles 2 Sneak Preview		The Incredibles 2 Sneak Preview										Daisy Lobby Atrium (P)				Cinderella Preludes							
CHARACTERS																	Lounge Music with FireLites Promenade Lounge				Let's Dance with The Royal Duo Lobby Atrium				 Walt Disney Theatre			
FUN FOR ALL AGES	Walking Ship Tour Preludes				Walking Ship Tour Preludes												Walking Ship Tour Preludes				Dr. Strange Defy the Dark Dimension							
ADULTS	Spa Raffle Senses Spa																Footprint Analysis Senses Spa & Salon				Music & Martinis Keys							
VIBE 14-17 YEARS OLD	Youth Activities Open House & Registration																Youth Activities Open House				Open for Teens							
EDGE 11-14 YEARS OLD	Youth Activities Open House & Registration																Youth Activities Open House				Open for Tweens							
OCEANEER LAB 3-12 YEARS OLD	Open House & Registration				Youth Activities Tour												Open House				Wii Challenge							
OCEANEER CLUB 3-12 YEARS OLD	Open House & Registration				Youth Activities Tour												Open House				Explore the Lab!							
	Open House & Registration				Youth Activities Tour												Open House				Explore the Club							



Evening	7:15	7:30	7:45	8:00	8:15	8:30	8:45	9:00	9:15	9:30	9:45	10:00	10:15	10:30	10:45	11:00	11:15	11:30	11:45	12:00	12:15			
FUNNEL VISION	Up (PG) Funnel Vision								WALL-E (G) Funnel Vision															
BUENA VISTA THEATRE	Coco (PG)								Avengers: Infinity War (PG)-13 Duration: 2 Hours 36 Minutes															
CHARACTERS	Cinderella Preludes				Minnie Lobby Atrium (P)				Mickey Lobby Atrium (P)				Cinderella Preludes											
FUN FOR ALL AGES	Disney Vacation Club Members Preview Fathoms				Live Looping with FireLites Promenade Lounge				 Walt Disney Theatre				Club				Family Karaoke							
ADULTS	50's and 60's Music Trivia O'Gills Pub				Smooth Sounds with Bernadett Bihari Keys				Cruise Staff DJ Fathoms				Cruise Staff DJ Fathoms											
VIBE 14-17 YEARS OLD	Cards Tournament				Profiles				GAGA Ball				Ice Breakers				Meet Your Counselors Heroes and Villains							
EDGE 11-14 YEARS OLD	Wii Challenge				Craft Corner				Four Square				Ice Breakers				Meet Your Counselors Profiles				Heroes and Villains			
OCEANEER LAB 3-12 YEARS OLD	Explore the Lab!				Super Sloppy Science				GAGA Ball				Relay Games				Mad Hatter's Unbirthday Party				Wii Challenge			
OCEANEER CLUB 3-12 YEARS OLD	Explore the Club				Memory Wall				Toy Story Boot Camp				Go Fetch				Four Square				Dance Party			

FOLD

Fold along the dotted lines and take me with you so you don't miss any of the fun!

FOLD

YOUTH ACTIVITIES OPEN HOUSE
A non-secured program with activities for families, adults and children to enjoy together.



TWICE CHARMED

AN ORIGINAL TWIST ON THE CINDERELLA STORY

WALT DISNEY THEATRE

Deck 4, Forward
6:30 pm & 8:45 pm

As a courtesy to all Guests, we kindly advise that the saving of seats is **not** permitted in the Walt Disney Theatre.

Assistance is available at the entrance to the Walt Disney Theatre 30 minutes prior to show time.

Character Meet & Greet Ticket Distribution

Port Adventures Desk, Deck 3, Midship - 12:00 pm - 2:00 pm

For Guests who did not reserve meet and greets online, a limited number of tickets are available today to meet some of your favorite Disney friends.

Princess Gathering - Frozen Gathering - Character Breakfast
Tickets are required for each of these meet and greets.
Space is limited.

Character Appearances

ADVENTURES AWAY
Deck 9 Stage - 5:00 pm

MICKEY MOUSE
Lobby Atrium (P)
8:15 pm & 10:15 pm

DAISY DUCK
Lobby Atrium (P)
5:30 pm

CINDERELLA
Preludes
5:45 pm, 8:00 pm & 10:00 pm

DONALD DUCK
Lobby Atrium (P)
6:00 pm

MINNIE MOUSE
Lobby Atrium (P)
7:45 pm & 9:45 pm



(S) Starboard Side - (P) Port Side

For detailed character appearances, refer to the character line on your Navigator, the Disney Cruise Line App, or the digital character board in the Lobby Atrium.
Lines close 15 minutes after advertised start time.

SHIP DIRECTORY

YOUTH ACTIVITIES

DISNEY'S OCEANEER CLUB	DECK 5, MID	12:00 PM - 4:00 PM 5:00 PM - 12:00 AM
DISNEY'S OCEANEER LAB	DECK 5, MID	12:00 PM - 4:00 PM 5:00 PM - 12:00 AM
EDGE	DECK 9, MID	12:00 PM - 4:00 PM 5:00 PM - 12:00 AM
IT'S A SMALL WORLD NURSERY	DECK 5, AFT	12:00 PM - 4:00 PM 5:00 PM - 11:30 PM
VIBE	DECK 10, MID	12:00 PM - 4:00 PM 5:00 PM - 12:00 AM

POOLS

*Children under 12 years of age must have adult supervision in all pools.

AQUADUNK	DECK 10, MID	12:00 PM - 3:30 PM 6:00 PM - 8:00 PM
AQUALAB	DECK 9, AFT	12:00 PM - 4:00 PM 5:00 PM - 8:00 PM
GOOBY'S POOL	DECK 9, MID	12:00 PM - 4:00 PM 6:00 PM - 10:00 PM
NEPHEWS' SPLASH ZONE	DECK 9, AFT	12:00 PM - 4:00 PM 5:00 PM - 6:00 PM
QUIET COVE POOL (18+)	DECK 9, FWD	12:00 PM - 11:00 PM
TWIST 'N' SPOUT	DECK 9, AFT	12:00 PM - 3:30 PM 5:00 PM - 8:00 PM

Please note, "selfie sticks" are not permitted in any aquatic areas.

Complimentary pool vests are available for children to use in the pools onboard.
They are located on the pool deck.

RECREATION

PORT ADVENTURES DESK	DECK 3, MID	12:00 PM - 4:00 PM 5:00 PM - 6:00 PM 7:15 PM - 9:00 PM
SENSES FITNESS CENTER (18+)	DECK 9, FWD	11:30 AM - 10:00 PM
WIDE WORLD OF SPORTS DECK	DECK 10, FWD	24 HOURS

GENERAL INFORMATION

BUENA VISTA THEATRE	DECK 5, AFT	SHOWTIMES
CONNECT@SEA DESK	DECK 3, AFT	1:00 PM - 4:00 PM 7:00 PM - 10:00 PM
DISNEY VACATION CLUB DESK	DECK 4, MID	9:00 PM - 10:30 PM
DISNEY VACATION PLANNING	DECK 4, MID	7:30 PM - 8:30 PM
FUNNEL VISION	DECK 9, MID	SHOWTIMES
GUEST SERVICES	DECK 3, MID	24 HOURS
HAIR BRAIDING	DECK 9, MID	4:30 PM - 6:00 PM
MEDICAL HEALTH CENTER	DECK 1, FWD	4:30 PM - 7:00 PM
PORT SHOPPING DESK	DECK 3, MID	7:30 PM - 9:30 PM
PRELUDES	DECK 4, FWD	SHOWTIMES
SENSES SPA AND SALON	DECK 9, FWD	11:30 AM - 10:00 PM
SHUTTERS PHOTO GALLERY	DECK 4, AFT	6:00 PM - 10:30 PM
WALT DISNEY THEATRE	DECK 4, FWD	SHOWTIMES

SHOPPING

BIBBIDI BOBBIDI BOUTIQUE	DECK 10, FWD	12:00 PM - 3:00 PM 5:00 PM - 9:00 PM
MICKEY'S MAINSAIL	DECK 4, FWD	6:30 PM - 11:00 PM
SEA TREASURES	DECK 3, FWD	6:30 PM - 11:00 PM
THE CROWN JEWELRY	DECK 4, AFT	6:30 PM - 11:00 PM
VISTA GALLERY	DECK 4, MID	7:30 PM - 8:00 PM 9:30 PM - 10:00 PM
WHITE CAPS	DECK 4, FWD	6:30 PM - 11:00 PM

DUE TO PORT REGULATIONS, WHEN THE SHIP IS DOCKED, THE STORES MUST REMAIN CLOSED.

EVENING ATTIRE Cruise Casual

WEATHER FORECAST Today: Partly Sunny
High: 72° F/22° C

DINING & LOUNGES

LUNCH

CABANAS	DECK 9, AFT	11:45 AM - 3:15 PM
DAISY'S DE LITES	DECK 9, AFT	12:00 PM - 3:30 PM 4:15 PM - 6:00 PM
DUCK-IN DINER	DECK 9, AFT	11:45 AM - 3:30 PM 4:15 PM - 6:00 PM
PMLUMIÈRE'S	DECK 3, MID	11:45 AM - 1:45 PM
PINOCCHIO'S PIZZERIA	DECK 9, MID	12:00 PM - 3:30 PM 4:15 PM - 6:00 PM

DINNER

ANIMATOR'S PALATE	DECK 4, AFT	6:00 PM & 8:30 PM
DUCK-IN DINER	DECK 9, AFT	6:00 PM - 10:00 PM
LUMIÈRE'S	DECK 3, MID	6:00 PM & 8:30 PM
PALO (18+) (FOR RESERVATIONS CALL 7-8843)	DECK 10, AFT	6:00 PM - 8:30 PM
RAPUNZEL'S ROYAL TABLE	DECK 3, AFT	6:00 PM & 8:30 PM

LATE NIGHT SNACKS

O'GILLS PUB	DECK 3, FWD	10:45 PM - 11:45 PM
PINOCCHIO'S PIZZERIA	DECK 9, MID	9:30 PM - 12:00 AM
PROMENADE LOUNGE	DECK 3, AFT	10:45 PM - 11:45 PM

ADDED FEATURES

EYE SCREAM	DECK 9, AFT	12:00 PM - 3:30 PM 4:15 PM - 11:00 PM
BEVERAGE STATION	DECK 9, AFT	24 HOURS
ROOM SERVICE	DIAL 7-4330	24 HOURS

ENTERTAINMENT - LOUNGES - BARS

Adults must be 21 and older to consume alcoholic beverages.

AFTER HOURS	DECK 3, FWD	(AFTER 9:00 PM. ADULTS ONLY)
COVE CAFE (18+)	DECK 9, MID	11:45 AM - 12:00 AM
D LOUNGE	DECK 4, MID	SHOWTIMES
FATHOMS (18+ AFTER 9:00 PM)	DECK 3, FWD	7:30 PM - 8:30 PM 9:30 PM - 2:00 AM
FROZONE TREATS	DECK 9, AFT	11:45 AM - 6:00 PM
KEYS (18+)	DECK 3, FWD	6:00 PM - 12:30 AM
O'GILLS PUB (18+ AFTER 9:00 PM)	DECK 3, FWD	12:00 PM - 12:00 AM
PRELUDES	DECK 4, FWD	SHOWTIMES
PROMENADE LOUNGE	DECK 3, AFT	11:45 AM - 12:00 AM
PINOCCHIO'S PIZZERIA	DECK 9, MID	11:45 AM - 12:00 AM
SIGNALS (18+)	DECK 9, FWD	11:45 AM - 10:30 PM

Public Health Advisory: Consuming raw or undercooked meats, poultry, seafood, shellfish, or eggs may increase your risk for foodborne illness, especially if you have certain medical condition.

Disney CRUISE LINE.

PORT ADVENTURES

Explore and more with our carefully selected Port Adventures. Pass by the Port Adventures Desk, Deck 3, Midship to find out more.

IMPORTANT NUMBERS

Fire/Security: 7-3001
Medical EMERGENCY: 7-3000
Health Center: 7-1927