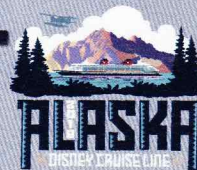


# VOYAGE NAVIGATOR



MONDAY  
MAY 21, 2018

TO

MONDAY  
MAY 28, 2018

## CRUISE HIGHLIGHTS

### MONDAY VANCOUVER

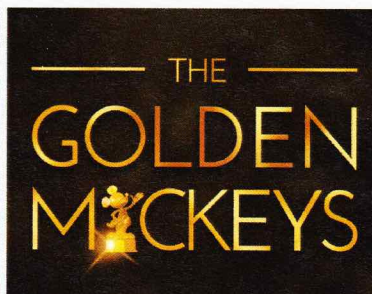
Port Departure: 5:00 pm  
All Aboard: 4:00 pm  
Attire: Cruise Casual

### TUESDAY DAY AT SEA

Attire: Formal

### WEDNESDAY

TRACY ARM  
Attire: Cruise Casual



### THURSDAY SKAGWAY

All Ashore: 7:15 am  
All Aboard: 8:00 pm  
Attire: Cruise Casual

### FRIDAY JUNEAU

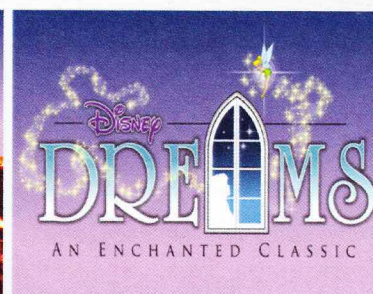
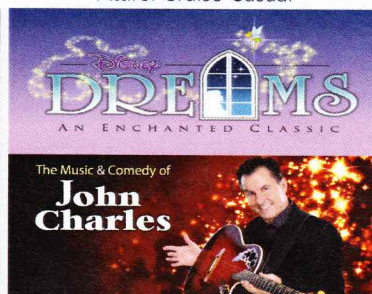
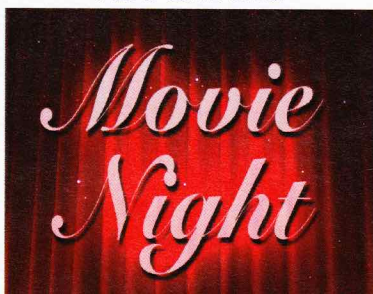
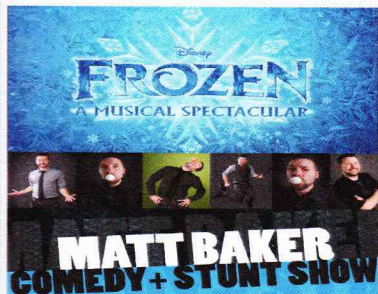
All Ashore: 6:45 am  
All Aboard: 4:45 pm  
Attire: Semi Formal

### SATURDAY

KETCHIKAN  
All Ashore: 11:15 am  
All Aboard: 7:45 pm  
Attire: Cruise Casual

### SUNDAY

DAY AT SEA  
Attire: Cruise Casual



Subject to change.

## WELCOME ABOARD!

### YOUR STATEROOM & LUGGAGE

Staterooms will be ready at 1:30 pm. To allow your Stateroom Host/ess time to prepare your room, please do not remove the blue stanchion straps. Stateroom hosts will deliver luggage throughout the day until 5:30 pm.

### STATEROOMS WITH BUNK BEDS

Bunk beds are recessed into the ceiling and will be prepared during evening turndown service by your Stateroom Host/ess.

### STATEROOM SAFE

Each stateroom is equipped with a secured storage safe. Instructions for use are located on the safe.

### TO CHANGE DINING ASSIGNMENT

Requests for different seating times will be taken today:

- 12:30 pm - 3:30 pm; Book in Promenade Lounge, Deck 3, Aft or please dial 7-10891 and leave a voicemail.

### PALO DINING RESERVATIONS

Reservations are required and will be taken on a first come basis today:

- 12:30 pm - 3:30 pm; Book in Promenade Lounge, Deck 3, Aft or please dial 7-6843 and leave a voicemail.

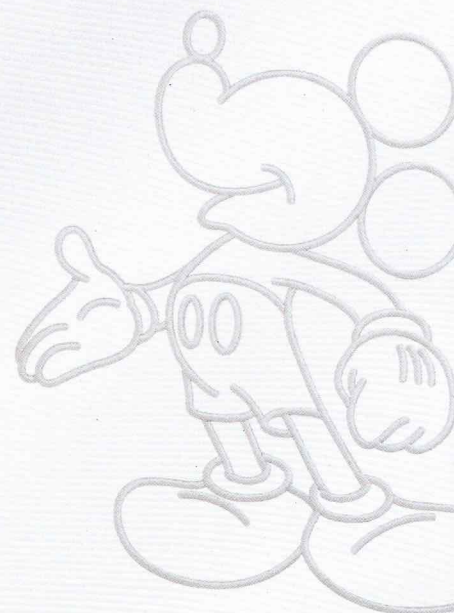
**Adult Exclusive Dining Opportunity!** Guests are invited to make 2 dinner reservations at our adult-exclusive restaurant, Palo. This includes one reservation on embarkation evening and one more on another night of the cruise. Reservations are subject to availability and a specialty dining charge will apply.

### DINNER

5:45 pm - First seating 8:15 pm - Second seating

Please check your Key To The World Card for details of your dining rotation, and bring them to your specific dining location. There is no need to wait in line prior to dinner. Dining Rooms open at designated seating times and your table is reserved each night of your cruise.

AP = Animator's Palate, Deck 4, Aft TR = Triton's, Deck 3, Midship TP = Tiana's Place, Deck 3, Aft



Create the most memorable experiences during your Disney Cruise Line vacation with Port Adventures! Our Port Adventures are designed for you to see the best our ports have to offer. Stop by the Port Adventures Desk, Deck 3, Midship where our friendly team will be happy to assist you plan your adventure!

There is an adventure for everyone on your Disney Wonder® vacation.

IMPORTANT NUMBERS

Fire/Security: 7-3001

Medical Emergency: 7-3000

Health Center: 7-1927

# ADULT ACTIVITY HIGHLIGHTS



**1820 SOCIETY (GUESTS 18-20 YEARS ONLY)**  
1820 Society is an exclusive option for young adult Guests. Come meet fellow passengers and learn about the excellent activities that the Disney Wonder offers to create the perfect cruise experience.



**80'S FLASHBACK**  
The 80's are back! Join your Cruise Staff team, in testing your 80's knowledge in this high energy 80's revival.



**ANYONE CAN COOK**  
Every Chef has a specialty, and ours is no exception. Get a taste of perfection with each recipe.

**ART OF THE THEME SHOW TOUR**  
Join us for a guided tour highlighting the design, Imagineering and artistry of the ship. This tour is reserved for Guests 18 and over.

**CRUISIN' SOLO GATHERING**  
Single, single parent or just traveling alone? Join your Cruise Staff for an informal gathering.



**DISNEY INNOVATIONS**  
Take part in our presentation on the 'Top 10' innovations presented by the Walt Disney Company.



**MATCH YOUR MATE**  
It's time to play everyone's favorite couples game show, Match Your Mate!



Senses Spa & Salon has a variety of seminars and fitness classes available throughout the cruise. Pamper yourself with therapeutic spa treatments of heat, steam, rain and water in luxurious and tranquil private rooms. Deck 9, Forward.

## BEVERAGE SEMINARS

Your Beverage team has a host of tastings and seminars to entertain and educate you. Stop by Promenade Lounge, Deck 3. Aft to pre-book these experiences (nominal fee applies).  
Mixology - Stem to Stern Wine Tasting - Martini Tasting - Champagne Tasting  
Beer Tasting - Cognac Tasting - Whisky Tasting  
Tequila & Margarita Tasting - Chocolate & Liquor Tasting - Rum Tasting

## FEATURED VARIETY ACTS THIS VOYAGE



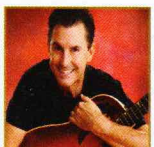
**THE MUSIC & COMEDY OF THE BEVERLY BELLES**  
The Beverly Belles are America's premier vintage singing trio - a sassier version of The Andrews Sisters! They take the music of the 1930s, 40s, and 50s, Disney films and Today's Top 40 and put their own entertaining spin on it with fun choreography and charming banter. The lovely ladies have performed all over the USA to standing ovations at every turn. Their musicianship, classic look and comedy make The Beverly Belles absolutely unforgettable!



**THE JUGGLING & COMEDY OF MATT BAKER**  
Matt Baker combines hilarious stand-up comedy and awesome stunts. He has performed in over 14 different countries. He's appeared on numerous television shows including America's Got Talent, where Piers Morgan described him as, "hip, funny and well choreographed; the total package!" His comedy never stops even when performing stunts like catapulting vegetables, spitting ping-pong balls at volunteers or performing his famous garden weasels of death.



**THE MAGIC & COMEDY OF BILLY KIDD**  
Billy Kidd has graced stages all over the world from Australia, to South East Asia, all over Europe, the Middle East and North America. She has performed at Hollywood's Magic Castle and also runs the weekly Krowd Keepers Magic Theatre in Bath, England.



**THE MUSIC & COMEDY OF JOHN CHARLES**  
With just his guitar, and his incredible singing voice, John Charles amazes his audience with his ability to combine music, comedy and audience interaction. No two shows are ever alike!

# FUN FOR ALL AGES HIGHLIGHTS



**ADVENTURES AWAY**  
Earn your status as V.I.P. sailors as your Cruise Director, your Disney Pals, and the Cruise Staff officially begin your "Adventures Away".



**DISNEY JUNIOR PIRATE & PRINCESS DANCE PARTY**  
Calling all Pirates and Princesses! Come join us for a family dance party featuring music and fun activities from Jake & the Neverland Pirates and Sofia the First. Whether you favor tiaras or treasure chests, there's something for you at our Disney Junior Pirate & Princess Dance Party!



**DISNEY VACATION CLUB GROUP PREVIEW**  
Join us for our interactive group presentation to learn about taking magical vacations year after year! For more information, please see a Disney Vacation Club Cast Member on Deck 4, Midship, or call 7-2805 from your stateroom phone.



**FAMILY SUPERSTAR KARAOKE**  
Join your Cruise Staff and sing along to your favorite song, fun for everyone.



**FAMILY TALENT SHOW SIGN UP**  
Pre-register at the Port Adventures Desk, Deck 3, Midship. Let your family take center stage and strut their stuff. Everyone has a talent, it's time to show off yours! Pre-register at the Port Adventures Desk.



**FREEZING THE NIGHT AWAY WITH ANNA, ELSA AND FRIENDS!**  
It's a Big Summer Blowout! Come join some of your favorite Frozen friends and Arendelle's royal party planners on Deck 9 for the best deck celebration on this side of the fjord! (Weather Permitting)



**FROZEN PHRASES**  
Contestants attempt to guess a series of words or phrases based on descriptions given to them by their teammates as they race against the clock in this Frozen themed game show.

**GAME SHOW: THE FEUD**  
"Survey Says" you'll have a fantastic time with our version of a classic game.

**GAME SHOW: THE WHEEL**  
A special version of this popular TV game show.



**JACK-JACK'S INCREDIBLE DIAPER DASH**  
Calling all baby cruisers! It's time to take to the mat to see who's the fastest crawler of the seven seas! Register your baby 15 minutes prior to the big race.



**JACKPOT BINGO**  
CASH prizes and raffle prizes to be won in our family friendly Bingo sessions with your Cruise Staff. Those under the age of 18 must be accompanied by an adult to play!



**MICKEY 200**  
Don't eat your vegetables... race them in this wild and wacky charge to the finish line. May the best veggie win! (Limited Availability)



**MICKEY MANIA**  
Join us for the ultimate test of your Disney knowledge as we play our live, interactive game show, that's "insania!"



**OAKEN'S MAYPOLE SWIRL AND TWIRL**  
Hoo-Hoo! Family! Join Oaken's cousins for a Midsummer celebration. Take a swirl and a twirl around the maypole and learn some traditional songs and dances, yah?



**SO YOU THINK YOU KNOW YOUR FAMILY?**  
This fun-filled family game show is always full of surprises. Find out how well you know, or don't know your family!



**WHO WANTS TO BE A MOUSEKETEER?**  
Your chance to get into the "hot seat" and win limited edition prizes. Or, play along as part of our live studio audience.



Please Check Daily Personal Navigator for all times and locations.

# YOUTH ACTIVITIES INFO & HIGHLIGHTS



## Dine & Play

As a convenience for families dining at 8:15 pm, our Youth Activities counselors will be available at the entrance of each restaurant to bring registered children to join the fun in the Youth Activities areas at the following times:

- 9:15 pm at the entrance of Triton's,
- 9:30 pm at the entrance of Tiana's Place and Animator's Palate.

## Pre-School Fun

Disney's Oceaneer Club is reserved for only those between 3-5 years of age. This is a time for them to become acclimated to Disney's Oceaneer Club, make new friends and join in on a lot of fun-filled programs and activities. Please note after Pre-School Fun has concluded, Disney's Oceaneer Club will be open for Secured Programming for ages 3-12.

## Youth Activities Open House

Open House is an opportunity for all to come and participate in a variety of exciting activities and free time in the Oceaneer Club, Oceaneer Lab, Edge and Vibe throughout the cruise. During these times secured programming will still be offered in the other venue for those looking to check their children into care.

## Youth Activities Venue Tour

Come and take a tour of Disney's Oceaneer Club and Disney's Oceaneer Lab. This informative tour will give you the information you need to know about our exciting spaces and activities offered for children ages 3-12. Please see your Personal Navigator or the Navigator App for times.



## DIN THE LION GUARD

Harness your inner animal and find out if you have what it takes to join the Lion Guard!

## MILES' COSMIC EXPLORER ADVENTURES

Miles needs your help! Gadfly has stolen his tech, and it's up to you to solve clues and puzzles in order to return the missing items back to Miles.

## SOFIA THE FIRST - MAGICAL STORYTELLING

You're invited to take part in Sorcery 101 at the Royal Prep Academy, where you'll learn a few spells and help retell one of Sofia's many magical adventures.



## LAVA FLOW

Build your own volcano and watch it erupt as you learn about the physics of volcanoes.

## MAKE A SHOW DISNEY STYLE

OPEN CALL - kids needed for a fun, one of a kind, make it your own show. Working in teams you'll have everything you need to make your own show in 90 minutes or less. Whether you're a Beauty or a Beast, you're sure to have fun!

## STON CUP CHALLENGE

It's Dinoco time and you're part of the pit crew! Design your own race car and see if you've got what it takes to end up in the winner's circle!



## HEROES AND VILLAINS

Join your favorite hero or villain team on a series of activities that will take place throughout the cruise.

## DESCENDANT'S DEN DJ SPIN OFF

Photo Booth! DJ lessons! Fun games! Sing! Laugh! Dance! It's the next generation of fun - Descendants style!



## DOTCHA

You will try to eliminate your victim by various methods collecting points throughout the day, last person standing with the most points wins.

## THAT'S HILARIOUS

Ever wanted to show off your comedy skills? Then be a part of the cast of the crazy improv show "That's Hilarious" and put on a live show for your friends.

# BUENA VISTA THEATRE

Deck 5, Aft

## FEATURE MOVIES THIS VOYAGE

### MONDAY - VANCOUVER

1:45 pm	PG	Coco	
5:15 pm	PG	Beauty and the Beast (2017)	
8:00 pm	PG	Beauty and the Beast (2017)	
10:45 pm	PG-13	Avengers: Infinity War	

### TUESDAY - DAY AT SEA

8:30 am	PG	Family Movie Fun Time: Coco	
12:15 pm	PG	A Wrinkle in Time	
2:30 pm	PG-13	Avengers: Infinity War	
5:30 pm	PG	Coco	
8:15 pm	PG	Coco	
10:30 pm	PG-13	Black Panther	

### WEDNESDAY - TRACY ARM

9:00 am	PG-13	Black Panther	
11:45 am	PG	Beauty and the Beast (2017)	
3:00 pm	PG	Coco	
5:15 pm	PG-13	Black Panther	
8:00 pm	PG-13	Black Panther	
10:45 pm	PG	A Wrinkle in Time	

### THURSDAY - SKAGWAY

12:00pm	G	Cars 3	
2:15 pm	PG-13	Black Panther	
5:00 pm	PG-13	Avengers: Infinity War	
8:00 pm	PG-13	Avengers: Infinity War	
11:00 pm	PG-13	Star Wars: The Last Jedi	

### FRIDAY - JUNEAU

8:30am	G	Cars 3	
11:30 am	PG	Beauty and the Beast (2017)	
2:15 pm	PG-13	Star Wars: The Last Jedi	
5:30 pm	PG	A Wrinkle in Time	
8:15 pm	PG	A Wrinkle in Time	

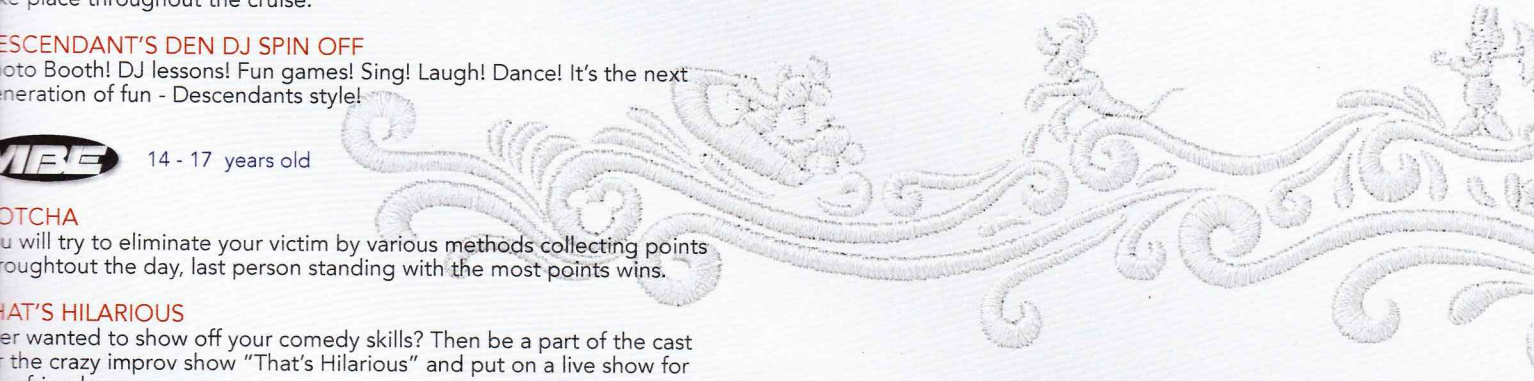
### SATURDAY - KETCHIKAN

9:00 am	PG	A Wrinkle in Time	
11:15 am	PG-13	Star Wars: The Last Jedi	
10:45 pm	PG-13	Avengers: Infinity War	

### SUNDAY - DAY AT SEA

9:15 am	PG-13	Avengers: Infinity War	
5:00 pm	PG-13	Avengers: Infinity War	
8:00 pm	PG-13	Avengers: Infinity War	

Subject to change.



# MORE TO ENJOY ONBOARD

## NEW FALL 2019 ITINERARIES

New Fall 2019 Itineraries announced! Set sail for spectacular ports including Bermuda and Quebec City, Canada. Disney Cruise Line will continue sailing to sun-soaked destinations on Bahamian, Caribbean and Baja cruises! Visit the Disney Vacation Planning, Deck 4, Midship for more information. Disney Vacation Planning tends to get busy on the last day of sailing. Don't miss the opportunity to plan your next Disney vacation.

## DISNEY VACATION CLUB® GROUP PREVIEW

Join us for our interactive group presentation to learn about taking magical vacations year after year! For more information, please see a Disney Vacation Club Cast Member on Deck 4, Midship, or call 7-2805 from your stateroom phone.

## PORT SHOPPING INFORMATION

Come and meet Celia, your Port Shopping Guide, at the Port Shopping Desk, Deck 3, Midship from 7:00 pm - 8:30 pm for a complimentary charm. Don't miss the Port Shopping Talk on Day at Sea 1 in the Buena Vista Theatre, Deck 5, Aft, at 11:00 am for all of your Port Shopping information and to enter a raffle for a chance to win a Diamond Pendant. Tune into Channel 24-6 all cruise long for more Port Shopping information.

## Connect@Sea

### FREE INTERNET EMBARKATION DAY SPECIAL

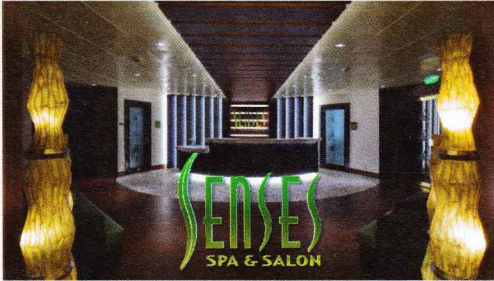
Sign up for a free 50 MB Internet package today and enjoy it throughout the cruise! This offer is only available from noon to midnight on the day your cruise begins. On your wireless device, simply find the "DCL-Guest" Wi-Fi Network, go to [www.dclguest.com](http://www.dclguest.com) to create an account, and get your free 50 MB of data to start sharing your memories even before you leave port! If you have any questions, ask our Connect@Sea Expert located at Deck 3, Midship. No purchase necessary. The free 50 MB package can only be used for the duration of the cruise. Only one free package per stateroom, but everyone can share it. Unused data from a package will not be reimbursed and it is non-transferable between voyages or ships.

### RELIGIOUS SERVICES

Groups who need a location to practice their faith may contact Guest Services for availability information.



## SENSES SPA & SALON



**DECK 9, FORWARD**  
Extension 7-1465

### RAINFOREST

Come enjoy our serenity lounge, with heated chairs, dry sauna, aromatherapy steam rooms and rainfall, misting showers. 7 Day Pass: Couples \$193 Single \$144

### REJUVENATION SPA CONSULTATIONS

Ready to enhance your natural beauty? Book your free Facial Rejuvenation consultation with our Rejuvenation Dr. at the Senses Spa.

### ONBOARD ACUPUNCTURE

Acupuncture is a safe and effective medicine that allows your body to heal itself, and is effective for various health conditions. See your onboard Acupuncturist for your free consultation.

### IONITHERMIE

Lose between 1 – 8 inches. Speed up your metabolism. Firm muscle tone. Improve appearance of cellulite. \$155/1 session or \$299/3 sessions.

### BIOTEC FACIALS

Our revolutionary facials address skin tone, blemishes and fine lines to transform the texture of the skin. The ultrasonic peel, massage and light therapy deliver a complexion that has never been smoother.

**AN 18% AUTO GRATUITY IS ADDED TO ALL SENSES SPA SERVICES.**

## MERCHANDISE SHOPPING



**DECK 4, FORWARD**

### DISNEY CRUISE LINE ALASKAN SOUVENIRS

Discover a variety of merchandise to commemorate your trip for the Alaskan season, including apparel, accessories, souvenirs, plush, drink ware and more. Sea Treasures Deck 3, Forward

### HELPFUL SHOPPING TIP

While shopping onboard, you may collect your items from both stores before proceeding to checkout at any register. No need to have to wait in line in each store to pay for your items separately! Mickey's Mainsail and White Caps, Deck 4, Forward.

### TAG HEUER TIMEPIECES

Travel through time with TAG Heuer; and discover the luxury Swiss watchmaker's latest collection. Exclusively onboard for this occasion, you'll be able to see authentic Museum pieces. Visit White Caps, Deck 4, Forward.

### BIBBIDI BOBBIDI BOUTIQUE

A makeover fit for a princess! Fairy Godmothers-in-Training are ready with magic and pixie dust to give your Prince and Princess the transformation of a lifetime. Make your reservations by visiting Bibbidi Bobbidi Boutique, Deck 10, Forward, Port Side, or dialing extension 7-10878. Limited space available.

## SHUTTERS PHOTO GALLERY



**DECK 4, AFT**

### WELCOME ABOARD RAFFLE

View your embarkation photos in Shutters, Deck 4, Aft and enter our raffle for a chance to win a 10 Digital Photos valued at \$149.95. Winner must be present at the 10:00 pm drawing in Shutters, Deck 4, Aft. \*Terms and conditions apply. Visit Shutters on Deck 4, Aft for more information.

### GET THE PICTURE!

Take home all your stateroom photos from this cruise on a USB! Terms and conditions apply. Visit Shutters on Deck 4, Aft and ask your friendly Shutters staff for more information. Get The Picture! Hurry! Order yours now.

### PHOTO BOOK

Turn your magical vacation memories into an impressive keepsake with a personalized PhotoBook. Order by 9:30 pm on the final night of the cruise.

### PRIVATE STUDIO PORTRAITURE

Book our exclusive and contemporary Private Studio experience today and capture these memories. No obligation to purchase. Black and White only.

**PHOTOS ARE AVAILABLE FOR VIEWING ON OUR INTERACTIVE PHOTO KIOSKS APPROXIMATELY FIVE HOURS AFTER BEING TAKEN AND ARE ONLY AVAILABLE FOR PURCHASE DURING THIS CRUISE.**

## IMPORTANT INFORMATION

### Security Notice

All Guests (including children) who wish to disembark the ship are required to present their Key to the World card at the gangway. A photo ID is also required for those Guests who are 18 years of age or older. Guests under the age of 18 are required to have a parent, guardian or other responsible adult sign an authorization form at the Guest Service Desk if they wish to go ashore unaccompanied or with any adult from another stateroom.

### Inclement Weather

For the safety of all Guests, outdoor events may be changed due to unforeseen weather conditions.

### Corridor Quiet Hours

As a courtesy to all our Guests, please recognize quiet hallway hours from 10:00 pm til 8:00 am.

### Environmental Message

With Disney's commitment to the Environment, please refrain from throwing anything over the Ship's side. Thank you!

### No Reserved Seats Policy

As a courtesy to all our Guests, we kindly advise that the saving of seats is not permitted in the Walt Disney Theatre, and the saving of the sun loungers is not permitted on Deck 9 and 10. Items left unattended will be returned to lost and found at Guest Services, Deck 3 Midship.

### Cold and Flu Reminder

Please wash hands frequently and thoroughly, particularly before meals. Contact the Health Center by dialing 7-1927, should anyone in your party become ill.

### Smoking

For the comfort of our Guests, the following areas are designated as smoking areas: \*Deck 9, Forward, Port Side \*Deck 4, Starboard side from 6:00 pm to 6:00 am only (all of Deck 4 is non-smoking from 6:00 am to 6:00 pm) Smoking is prohibited inside all Guest staterooms and on stateroom verandahs. Guests found smoking in their staterooms or on their verandahs will be charged a \$250 stateroom recovery fee. Electronic cigarettes may only be used in designated smoking areas.

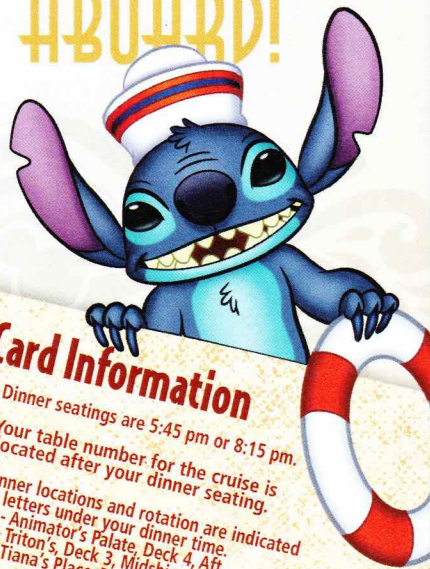
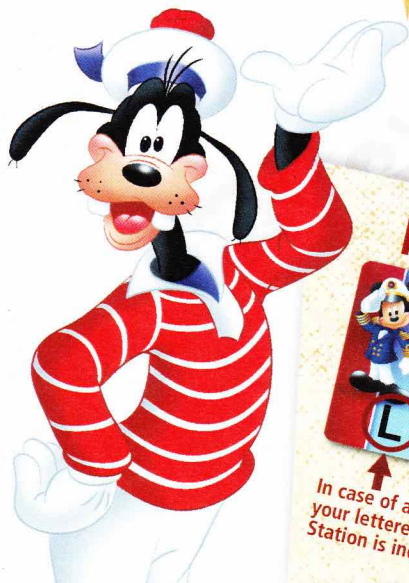
### Walt Disney Theatre

Theatrical performances may use artificial fog, strobe lights, pyrotechnics and other special effects. For the safety of our performers and the comfort of those around you, the use of any photography, video recording device or any electronic equipment is prohibited.

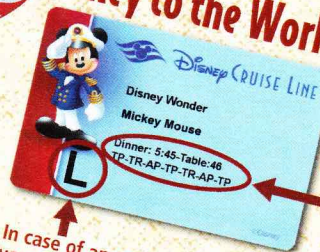
### Verandah Safety

Please do not leave any personal items on your verandah that may be blown overboard or present a fire hazard if left unattended. Guests should not sit, lean or climb on the railing or leave children unattended on the verandah. Do not open the verandah and stateroom doors simultaneously as this may create a wind effect and could cause the doors to slam unexpectedly.

# WELCOME ABOARD!




## Key to the World Card Information



In case of an emergency, your lettered Assembly Station is indicated here.

- Dinner seatings are 5:45 pm or 8:15 pm.
- Your table number for the cruise is located after your dinner seating.
- Dinner locations and rotation are indicated by letters under your dinner time.  
 AP - Animator's Palate, Deck 4, Aft  
 TR - Triton's, Deck 3, Midship  
 TP - Tiana's Place, Deck 3, Aft

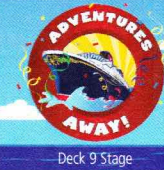


### FAMILY DECK PARTY

Earn your status as V.I.P. sailors as your Cruise Director, Natalie, your Disney Pals, and the Cruise Staff officially begin your "Adventures Away".

**Deck 9 Stage, 4:30 pm**

**DRINK OF THE DAY**  
Paradise Punch (Alcoholic)  
Espresso Chiller (Non-Alcoholic)

Afternoon	1:45	2:00	2:15	2:30	2:45	3:00	3:15	3:30	3:45	4:00	4:15	4:30	4:45	5:00	5:15	5:30	5:45	6:00	6:15	6:30	6:45	
FUNNEL VISION	Brother Bear (G)  Open Captioning Funnel Vision												Adventures Away Deck 9 Stage		The Muppets (PG)  Open Captioning Funnel Vision							
BUENA VISTA THEATRE	Coco (PG) Duration: 1 Hour 49 Minutes																Beauty and the Beast (2017) (PG) Duration: 2 Hours 9 Minutes					
CHARACTERS	Join the Lion Guard Oceaneer Club												Mickey DK4 Mid (S)		Minnie DK4 Mid (S)		Pluto Lobby Atrium (P)		Goofy Lobby Atrium (P)			
FUN FOR ALL AGES	Walking Ship Tour Preludes		Walking Ship Tour Preludes										 Deck 9 Stage		Disney Songs with Oleg Kotyuk Promenade Lounge		The Music & Comedy of <b>THE BEVERLY BELLES</b> Walt Disney Theatre					
	Join the Lion Guard Oceaneer Club		Youth Activities Tour Oceaneer Lab								Pop Hits with Supernova Duo Lobby Atrium											
ADULTS	Facial Consultations Senses Spa & Salon												Footprint Analysis Senses Spa Fitness Center		Cruisin' Solo Gathering Cove Cafe							
VIBE 14-17 YEARS OLD	Youth Activities Open House & Registration												Youth Activities Open House & Registration		Open for Teens							
EDGE 11-14 YEARS OLD	Youth Activities Open House & Registration												Youth Activities Open House & Registration		Open for Tweens							
OCEANEER LAB 3-12 YEARS OLD	Youth Activities Open House & Registration		Youth Activities Tour		Open House								Youth Activities Open House & Registration				Ice Breakers					
OCEANEER CLUB 3-12 YEARS OLD	Open House		Join the Lion Guard		Youth Activities Open House & Registration								Youth Activities Open House & Registration				Miles' Cosmic Explorers					


### Mandatory Guest Assembly Drill 4:00 pm

(All Guests must attend)

All ship services will be suspended during this time.



Refer to the posted drill instructions on the back of your stateroom door prior to heading to Deck 4. Please bring your Key to the World Card.

You will not need your life jacket for the Guest Assembly Drill.



Your Assembly Station is indicated on your Key To The World card.



Evening	7:00	7:15	7:30	7:45	8:00	8:15	8:30	8:45	9:00	9:15	9:30	9:45	10:00	10:15	10:30	10:45	11:00	11:15	11:30	11:45	12:00	
FUNNEL VISION	Frozen Fever (G) Funnel Vision		Wreck-It Ralph (PG)  Open Captioning Funnel Vision								WALL-E (G) Funnel Vision											
BUENA VISTA THEATRE					Beauty and the Beast (2017) (PG) Duration: 2 Hours 9 Minutes												Avengers: Infinity War (PG)-13 Duration: 2 Hours 36 Minutes					
CHARACTERS	Donald DK4 Mid (S)		Daisy DK4 Mid (S)		Minnie Lobby Atrium (P)				Donald Lobby Atrium (P)		Chip & Dale DK5 Mid (S)		Mickey Lobby Atrium (P)				Goofy DK4 Mid (S)		Pluto DK4 Mid (S)			
FUN FOR ALL AGES	Family Dance Party Promenade Lounge		 D Lounge		The Music & Comedy of <b>THE BEVERLY BELLES</b> Walt Disney Theatre				Family Animation D Lounge		 D Lounge				Pop Piano Tunes with Oleg Kotyuk Promenade Lounge		Evening Acoustics with Oleg Kotyuk Lobby Atrium					
			Disney Vacation Club Members Preview Azure										1820 Society Stir it Blend it Taste It Cove Cafe		Ice Breakers Azure		Wonder Quest Azure		Cruise Staff DJ Azure		Piano Requests with Chuck Perry Cadillac Lounge	
ADULTS			Team Trivia Crown & Fin Pub		Smooth Sounds with Ed Harvey Cadillac Lounge		Smooth Sounds with Ed Harvey Cadillac Lounge				Ice Breakers Profiles		The Download		Ultimate Challenge							
VIBE 14-17 YEARS OLD	Guitar Hero Challenge		Wii Challenge						Ice Breakers		Profiles		The Download		Ultimate Challenge							
EDGE 11-14 YEARS OLD	GAGA Ball		Ice Breakers						Profiles		Taking it to The Edge		Heroes and Villains									
OCEANEER LAB 3-12 YEARS OLD	Meet Your Counselors		Oceaneer Rangers						Lava Flow				Gaga Ball		Human Bingo							
OCEANEER CLUB 3-12 YEARS OLD	Welcome Party		Parachute Games						Once Upon a Time				MARVEL Super Hero Academy Avengers Assemble									

FOLD

Fold along the dotted lines and take me with you so you don't miss any of the fun!

FOLD

**YOUTH ACTIVITIES OPEN HOUSE**  
A non-secured program with activities for families, adults and children to enjoy together.



**WALT DISNEY THEATRE**  
Deck 4, Forward

**6:15 pm & 8:30 pm**

As a courtesy to all Guests, we kindly advise that the saving of seats is not permitted in the Walt Disney Theatre.

Assistance is available at the entrance to the Walt Disney Theatre 30 minutes prior to show time.

**Character Meet & Greet Ticket Distribution**

*Port Adventures Desk, Deck 3, Midship - 12:00 pm - 2:00 pm*  
For Guests who did not reserve meet and greets online, a limited number of tickets are available today to meet some of your favorite Disney friends.

*Princess Gathering ~ Frozen Meet and Greet*  
VIP Character Breakfast

Tickets are required for each of these meet and greets. Space is limited.

**Character Appearances**

- JOIN THE LION GUARD**  
Disney's Oceaneer Club  
2:00 pm
- ADVENTURES AWAY**  
Deck 9 Stage - 4:30 pm
- MICKEY MOUSE**  
DK4 Mid (S) - 5:15 pm  
Lobby Atrium (P)  
7:45 pm & 10:15 pm
- PLUTO**  
Lobby Atrium (P) - 5:15 pm  
DK4 Mid (S) - 10:15 pm
- MINNIE MOUSE**  
DK4 Mid (S) - 5:45 pm  
Lobby Atrium (P) - 8:15 pm
- GOOFY**  
Lobby Atrium (P) - 5:45 pm  
DK4 Mid (S) - 9:45 pm
- DONALD DUCK**  
DK4 Mid (S) - 7:30 pm  
Lobby Atrium (P) - 9:45 pm
- DAISY DUCK**  
DK4 Mid (S) - 8:00 pm
- CHIP & DALE**  
DK5 Mid (S)  
8:00 pm & 10:00 pm

(S) Starboard Side - (P) Port Side  
For details of daily Disney character appearances, refer to the character line on your Navigator Grid, or the digital character board in the Lobby Atrium.  
Lines close 15 minutes after advertised start time.

**SHIP DIRECTORY**

**YOUTH ACTIVITIES**

DISNEY'S OCEANEER CLUB	DECK 5, Mid	12:00 PM - 3:30 PM 4:30 PM - 12:00 AM
DISNEY'S OCEANEER LAB	DECK 5, Mid	12:00 PM - 3:30 PM 4:30 PM - 12:00 AM
EDGE	DECK 9, Mid	12:00 PM - 3:30 PM 4:30 PM - 12:00 AM
IT'S A SMALL WORLD NURSERY	DECK 5, Aft	12:00 PM - 3:30 PM 5:30 PM - 11:00 PM
VIBE	DECK 10, Mid	12:00 PM - 3:30 PM 4:30 PM - 12:00 AM

**POOLS**

Children under 12 years of age must have adult supervision in all pools.

AQUALAB	DECK 9, Aft	11:45 AM - 3:30 PM 4:30 PM - 6:00 PM
DORY'S REEF	DECK 9, Aft	11:45 AM - 3:30 PM 4:30 PM - 6:00 PM
GOOFY'S POOL	DECK 9, Mid	11:45 AM - 3:30 PM 6:00 PM - 9:00 PM
QUIET COVE POOL (18+)	DECK 9, Fwd	12:00 PM - 3:30 PM 4:30 PM - 10:00 PM
TWIST N' SPOUT	DECK 9, Aft	11:45 AM - 3:00 PM 4:30 PM - 6:00 PM

Please note, "selfie sticks" are not permitted in any aquatic area.

Complimentary pool vests are available for children to use in the pools onboard. They are located on the pool deck.

**RECREATION**

CHILL SPA	DECK 9, Fwd	12:00 PM - 10:00 PM
PORT ADVENTURES DESK	DECK 3, Mid	12:00 PM - 3:30 PM 4:30 PM - 8:30 PM
SENSES FITNESS CENTER (18+)	DECK 9, Fwd	11:30 AM - 10:00 PM
WIDE WORLD OF SPORTS DECK	DECK 10, Fwd	12:00 PM - 3:30 PM 4:30 PM - 12:00 AM

**GENERAL INFORMATION**

BUENA VISTA THEATRE	DECK 5, Aft	SHOWTIMES
CONNECT@SEA DESK	DECK 3, Aft	1:00 PM - 4:00 PM 7:00 PM - 10:00 PM
DISNEY VACATION CLUB DESK	DECK 4, Mid	5:00 PM - 6:00 PM
DISNEY VACATION PLANNING DESK	DECK 4, Mid	7:30 PM - 8:30 PM
FUNNEL VISION	DECK 9, Mid	SHOWTIMES
GUEST SERVICES	DECK 3, Mid	24 HOURS
MEDICAL HEALTH CENTER	DECK 1, Fwd	4:30 PM - 7:00 PM
PORT SHOPPING DESK	DECK 3, Mid	7:00 PM - 8:30 PM
PRELUDES	DECK 4, Fwd	SHOWTIMES
SENSES SPA AND SALON	DECK 9, Fwd	11:30 AM - 10:30 PM
SHUTTERS PHOTO GALLERY	DECK 4, Aft	7:00 PM - 10:30 PM
WALT DISNEY THEATRE	DECK 4, Fwd	SHOWTIMES

**SHOPPING**

ART GALLERY	DECK 4, Mid	7:00 PM - 8:00 PM
BIBBIDI BOBBIDI BOUTIQUE	DECK 10, Fwd	12:00 PM - 3:00 PM 5:00 PM - 9:00 PM
MICKEY'S MAINSAIL	DECK 4, Fwd	6:00 PM - 11:00 PM
QUACKS	DECK 9, Mid	
SEA TREASURES	DECK 3, Fwd	6:00 PM - 10:30 PM
WHITE CAPS	DECK 4, Fwd	6:00 PM - 11:00 PM

**EVENING Cruise Casual ATTIRE**

**WEATHER FORECAST** Today: Partly Sunny High 64 F/18 C

**DINING & LOUNGES**

**LUNCH**

CABANAS	DECK 9, Aft	12:00 PM - 3:15 PM
DAISY'S DE LITES	DECK 9, Aft	12:00 PM - 3:30 PM 4:30 PM - 6:00 PM
PINOCCHIO'S PIZZERIA	DECK 9, Mid	12:00 PM - 3:30 PM 4:30 PM - 6:00 PM
PETE'S BOILER BITES	DECK 9, Aft	12:00 PM - 3:30 PM 4:30 PM - 6:00 PM
TRITON'S (A-LA CARTE)	DECK 3, Mid	11:45 AM - 1:30 PM

**DINNER**

ANIMATOR'S PALATE	DECK 4, Aft	5:45 PM & 8:15 PM
PALO (18+)	DECK 10, Aft	6:00 PM - 8:30 PM
PETE'S BOILER BITES	DECK 9, Aft	6:00 PM - 9:30 PM
TIANA'S PLACE	DECK 3, Aft	5:45 PM & 8:15 PM
TRITON'S	DECK 3, Mid	5:45 PM & 8:15 PM

**LATE NIGHT SNACKS**

CROWN & FIN PUB (18+ AFTER 9:00 PM)	DECK 3, Fwd	10:30 PM - 11:30 PM
PINOCCHIO'S PIZZERIA	DECK 9, Mid	9:30 PM - 12:00 AM
PROMENADE LOUNGE	DECK 3, Aft	10:30 PM - 11:30 PM

**ADDED FEATURES**

BEVERAGE STATION	DECK 9, Aft, PORT SIDE	24 HOURS
EYE SCREAM	DECK 9, Mid	12:00 PM - 3:30 PM
ROOM SERVICE	DIAL 4330	OPENS AT 1:30 PM

**ENTERTAINMENT - LOUNGES - BARS**

Adults must be 21 and older to consume alcoholic beverages.

AZURE (18+ AFTER 9:00 PM)	DECK 3, Fwd	7:30 PM - 1:00 AM
CADILLAC LOUNGE (18+)	DECK 3, Fwd	6:00 PM - 12:00 AM
COVE CAFE (18+)	DECK 9, Mid	11:45 AM - 12:00 AM
CROWN & FIN PUB (18+ AFTER 9:00 PM)	DECK 3, Fwd	4:30 PM - 12:00 AM
D LOUNGE	DECK 4, Mid	SHOWTIMES
PINOCCHIO'S PIZZERIA	DECK 9, Mid	11:45 AM - 12:00 AM
PRELUDES	DECK 4, Fwd	SHOWTIMES
PROMENADE LOUNGE	DECK 3, Aft	11:45 AM - 12:00 AM
SIGNALS (18+)	DECK 9, Fwd	4:30 PM - 9:00 PM
SULLY'S SIPS	DECK 9, Mid	11:45 AM - 5:30 PM

Public Health Advisory: Consuming raw or under-cooked meats, poultry, seafood, shellfish, or eggs may increase your risk for food borne illness, especially if you have certain medical conditions.



Explore and more with our carefully selected Port Adventures. Visit the Port Adventures Desk, Deck 3, Midship to find out more.

**IMPORTANT NUMBERS**

Fire/Security: 7-3001  
Medical EMERGENCY: 7-3000  
Health Center: 7-1927