

VOYAGE NAVIGATOR

SUNDAY
MAY 6, 2018

TO

FRIDAY
MAY 11, 2018

CRUISE HIGHLIGHTS

SUNDAY

SAN DIEGO

Port Departure: 5:00 pm

All Aboard: 4:00 pm

Attire: Cruise Casual

THE
GOLDEN
MICKEYS

THE GOLDEN MICKEYS

Walt Disney Theatre
6:15 pm & 8:30 pm

MONDAY

DAY AT SEA

Attire: Cruise Casual



SHOWTIME: MICHAEL HARRISON

Walt Disney Theatre
6:15 pm & 8:30 pm

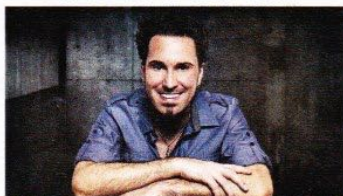
TUESDAY

CABO SAN LUCAS

All Ashore: 8:30 am

All Aboard: 4:45 pm

Attire: Pirate or Cruise Casual



SHOWTIME: DAVID DAVINCI

Walt Disney Theatre
6:15 pm & 8:30 pm

WEDNESDAY

DAY AT SEA

Attire: Optional Dress Up



FROZEN, A MUSICAL SPECTACULAR

Walt Disney Theatre
6:00 pm & 8:30 pm

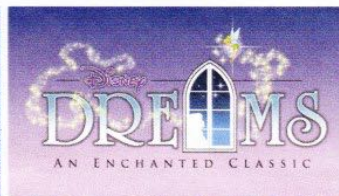
THURSDAY

ENSENADA

All Ashore: 9:15 am

All Aboard: 4:45 pm

Attire: Cruise Casual



DISNEY DREAMS: AN ENCHANTED CLASSIC

Walt Disney Theatre
6:15 pm & 8:30 pm

Subject to change.

WELCOME ABOARD!

YOUR STATEROOM & LUGGAGE

Staterooms will be ready at 1:30 pm. To allow your Stateroom Host/ess time to prepare your room, please do not remove the blue stanchion straps. Stateroom hosts will deliver luggage throughout the day until 5:30 pm.

STATEROOMS WITH BUNK BEDS

Bunk beds are recessed into the ceiling and will be prepared during evening turndown service by your Stateroom Host/ess.

STATEROOM SAFE

Each stateroom is equipped with a secured storage safe. Instructions for use are located on the safe.

TO CHANGE DINING ASSIGNMENT

Requests for different seating times will be taken today:

• 12:30 pm - 3:30 pm; Book in Promenade Lounge, Deck 3, Aft or please dial 7-10891 and leave a voicemail.

PALO DINING RESERVATIONS

Reservations are required and will be taken on a first come basis today:

• 12:30 pm - 3:30 pm; Book in Promenade Lounge, Deck 3, Aft or please dial 7-6843 and leave a voicemail.

Adult Exclusive Dining Opportunity! Guests are invited to make 2 dinner reservations at our adult-exclusive restaurant, Palo. This includes one reservation on embarkation evening and one more on another night of the cruise. Reservations are subject to availability and a specialty dining charge will apply.

DINNER

5:45 pm - First seating 8:15 pm - Second seating

Please check your Key To The World Card for details of your dining rotation, and bring them to your specific dining location. There is no need to wait in line prior to dinner. Dining Rooms open at designated seating times and your table is reserved each night of your cruise.

AP = Animator's Palate, Deck 4, Aft TR = Triton's, Deck 3, Midship TP = Tiana's Place, Deck 3, Aft

Create the most memorable experiences during your Disney Cruise Line vacation with Port Adventures! Our Port Adventures are designed for you to see the best our ports have to offer. Stop by the Port Adventures Desk, Deck 3, Midship where our friendly team will be happy to assist you plan your adventure!

There is an adventure for everyone on your Disney Wonder® vacation.

Disney CRUISE LINE
PORT ADVENTURES

IMPORTANT NUMBERS

Fire/Security: 7-3001

Medical Emergency: 7-3000

Health Center: 7-1927

ADULT ACTIVITY HIGHLIGHTS



1820 SOCIETY (GUESTS 18-20 YEARS ONLY)

1820 Society is an exclusive option for young adult Guests. Come meet fellow passengers and learn about the excellent activities that the Disney Wonder offers to create the perfect cruise experience.



80'S FLASHBACK

The 80's are back! Join your Cruise Staff team, in testing your 80's knowledge in this high energy 80's revival.



ANYONE CAN COOK

Every Chef has a specialty, and ours is no exception. Get a taste of perfection with each recipe.

ART OF THE THEME SHOW TOUR

Join us for a guided tour highlighting the design, Imagineering and artistry of the ship. This tour is reserved for Guests 18 and over.

CRUISIN' SOLO GATHERING

Single, single parent or just traveling alone? Join your Cruise Staff for an informal gathering.



DISNEY INNOVATIONS

Take part in our presentation on the 'Top 10' innovations presented by the Walt Disney Company.



MATCH YOUR MATE

It's time to play everyone's favorite couples game show, Match Your Mate!



Senses Spa & Salon has a variety of seminars and fitness classes available throughout the cruise. Pamper yourself with therapeutic spa treatments of heat, steam, rain and water in luxurious and tranquil private rooms. Deck 9, Forward.

BEVERAGE SEMINARS

Your Beverage team has a host of tastings and seminars to entertain and educate you. Stop by Promenade Lounge, Deck 3, Aft to pre-book these experiences (nominal fee applies).

Mixology - Stem to Stern Wine Tasting - Martini Tasting - Mojito Tasting
Beer Tasting - Cognac Tasting - Whisky Tasting - Champagne Tasting
Tequila & Margarita Tasting - Chocolate & Liquor Tasting - Rum Tasting



FUN FOR ALL AGES HIGHLIGHTS



ADVENTURES AWAY

Earn your status as V.I.P. sailors as your Cruise Director, your Disney Pals, and the Cruise Staff officially begin your "Adventures Away".



A PIRATES LIFE FOR ME

Calling all Pirates, we be! If ye have an adventurous spirit or pirate savvy, come spin the "Wheel of Destiny" for a treasure trove of fun be ripe for the takin' in this action packed pirate game show.



DISNEY MOVIE CHALLENGE POOLSIDE

So you like movies? And you like bingo? This deck party has them both! Come on out to watch all your favorite movie clips and just maybe your team will win the opportunity to choose the movie played by the pool today!



DISNEY VACATION CLUB GROUP PREVIEW

Join us for our interactive group presentation to learn about taking magical vacations year after year! For more information, please see a Disney Vacation Club Cast Member on Deck 4, Midship, or call 7-2805 from your stateroom phone.

GAME SHOW: THE FEUD

"Survey Says" you'll have a fantastic time with our version of a classic game.

GAME SHOW: THE WHEEL

A special version of this popular TV game show.



JACK-JACK'S INCREDIBLE DIAPER DASH

Calling all baby cruisers! It's time to take to the mat to see who's the fastest crawler of the seven seas! Register your baby 15 minutes prior to the big race.



JACKPOT BINGO

CASH prizes and raffle prizes to be won in our family friendly Bingo sessions with your Cruise Staff. Those under the age of 18 must be accompanied by an adult to play!



MICKY 200

Don't eat your vegetables... race them in this wild and wacky charge to the finish line. May the best veggie win! (Limited Availability)



MICKY MANIA

Join us for the ultimate test of your Disney knowledge as we play our live, interactive game show, that's "insania!"



PIRATES IN THE CARIBBEAN DECK PARTY

Yer Disney Friends are all set for a swashbucklin' good time! It's a Pirate Celebration, me hearties! Hoist yourself to Deck 9 to enjoy a rowdy buccaneer bash we call Pirates IN the Caribbean Deck Party.



SALUDOS AMIGOS FIESTA

Come see what Donald and his friends are up to this time. Bring the family out to this interactive dance party featuring fun Latin music! Your family will learn to salsa, merengue and just have a Latin good time!



SO YOU THINK YOU KNOW YOUR FAMILY?

This fun-filled family game show is always full of surprises. Find out how well you know, or don't know your family!



WHO WANTS TO BE A MOUSEKETEE?

Your chance to get into the "hot seat" and win limited edition prizes. Or, play along as part of our live studio audience.



'TIL WE MEET AGAIN

The world-famous Disney Characters and some of your new friends from the Disney Wonder stage shows bid you a charming farewell.

Please Check Daily Personal Navigator for all times and locations.

YOUTH ACTIVITIES INFO & HIGHLIGHTS



Dine & Play

As a convenience for families dining at 8:15 pm, our Youth Activities counselors will be available at the entrance of each restaurant to bring registered children to join the fun in the Youth Activities areas at the following times:

9:15 pm at the entrance of Triton's,
9:30 pm at the entrance of Tiana's Place and Animator's Palate.

Pre-School Fun

Disney's Oceaneer Club is reserved for only those between 3-5 years of age. This is a time for them to become acclimated to Disney's Oceaneer Club, make new friends and join in on a lot of fun-filled programs and activities. Please note after Pre-School Fun has concluded, Disney's Oceaneer Club will be open for Secured Programming for ages 3-12.

Youth Activities Open House

Open House is an opportunity for all to come and participate in a variety of exciting activities and free time in the Oceaneer Club, Oceaneer Lab, Edge and Vibe throughout the cruise. During these times secured programming will still be offered in the other venue for those looking to check their children into care.

Youth Activities Venue Tour

Come and take a tour of Disney's Oceaneer Club and Disney's Oceaneer Lab. This informative tour will give you the information you need to know about our exciting spaces and activities offered for children ages 3-12. Please see your Personal Navigator or the Navigator App for times.



3 - 12 years old

JOIN THE LION GUARD

Harness your inner animal and find out if you have what it takes to join the Lion Guard!

MILES' COSMIC EXPLORER ADVENTURES

Miles needs your help! Gadfly has stolen his tech, and it's up to you to solve clues and puzzles in order to return the missing items back to Miles.

SOFIA THE FIRST - MAGICAL STORYTELLING

You're invited to take part in Sorcery 101 at the Royal Prep Academy, where you'll learn a few spells and help retell one of Sofia's many magical adventures.



3 - 12 years old

LAVA FLOW

Build your own volcano and watch it erupt as you learn about the physics of volcanoes.

MAKE A SHOW DISNEY STYLE

OPEN CALL - kids needed for a fun, one of a kind, make it your own show. Working in teams you'll have everything you need to make your own show in 90 minutes or less. Whether you're a Beauty or a Beast, you're sure to have fun!

PISTON CUP CHALLENGE

It's Dinoco time and you're part of the pit crew! Design your own race car and see if you've got what it takes to end up in the winner's circle!



11 - 14 years old

DESCENDANT'S DEN DJ SPIN OFF

Photo Booth! DJ lessons! Fun games! Sing! Laugh! Dance! It's the next generation of fun - Descendants style!

HEROES AND VILLAINS

Join your favorite hero or villain team on a series of activities that will take place throughout the cruise.



14 - 17 years old

GOTCHA

You will try to eliminate your victim by various methods collecting points throughout the day, last person standing with the most points wins.

HAUNTED MANSION FAMILY PORTRAITS

Grim grinning ghosts come out to socialize as teens get transformed in a ghoulish photo shoot that is guaranteed to bring the spooks out for a swinging wake!

BUENA VISTA THEATRE

Deck 5, Aft

FEATURE MOVIES THIS VOYAGE

SUNDAY - SAN DIEGO

5:15 pm	PG-13	Black Panther	
8:00 pm	PG-13	Black Panther	
10:45 pm	PG	A Wrinkle in Time	CC Open Captioning

MONDAY - DAY AT SEA

8:30 am	G	Family Movie Fun Time: Cars 3	
12:30 pm	PG	Black Panther	
3:15 pm	PG	Coco	
5:30 pm	PG	Beauty and the Beast (2017)	
8:15 pm	PG	Beauty and the Beast (2017)	
10:45 pm	PG-13	Avengers: Infinity War	3D

TUESDAY - CABO SAN LUCAS

12:15 pm	PG	A Wrinkle in Time	3D
2:30 pm	PG-13	Avengers: Infinity War	CC Open Captioning
5:30 pm	PG	Coco	
8:00 pm	PG	Coco	
10:45 pm	PG-13	Star Wars: The Last Jedi	3D

WEDNESDAY - DAY AT SEA

9:00 am	PG	Family Movie Fun Time: A Wrinkle in Time	
11:15 am	PG-13	Star Wars: The Last Jedi	
2:30 pm	PG	A Wrinkle in Time	
5:00 pm	PG-13	Avengers: Infinity War	3D
8:00 pm	PG-13	Avengers: Infinity War	3D
11:00 pm	PG	Beauty and the Beast (2017)	

THURSDAY - ENSENADA

9:00 am	PG	Family Movie Fun Time: Coco	
11:30 am	PG-13	Avengers: Infinity War	
2:30 pm	PG-13	Star Wars: The Last Jedi	CC Open Captioning
5:30 pm	PG	A Wrinkle in Time	
8:15 pm	PG	A Wrinkle in Time	
10:30 pm	PG-13	Black Panther	3D

Subject to change.

FEATURED VARIETY ACTS THIS VOYAGE



THE VENTRILOQUISM & COMEDY OF MICHAEL HARRISON

Michael Harrison is an extraordinarily talented ventriloquist, puppeteer and comedian. He has worked alongside numerous acts from The Muppets to Boyz 2 Men. Michael wrote and starred in the award winning television show, "Kids in the Firehall," which was awarded the prestigious Bronze Apple Award. Recently, he took his talents to a new level and appeared on "America's Got Talent" & finished as one of the finalists.



THE AMAZING ILLUSIONS OF DAVID DAVINCI

Prepare to be mystified by mind boggling illusions and jaw dropping magic. You'll laugh, you'll cheer, your jaw will hit the floor, as David DaVinci presents his interpretation of the age-old art of magic and illusions, in Delusions! As seen on 6 continents and multiple national and international TV Shows, he has also headlined for Ringling Brothers & Barnum and Bailey Circus, and headlined at Planet Hollywood in Las Vegas.

MORE TO ENJOY ONBOARD

NEW SPRING 2019 ITINERARIES

New Spring 2019 Itineraries announced! Set sail for favorite tropical destinations as Disney Cruise Line will return to The Bahamas, Caribbean and even Baja cruises! Visit the Disney Vacation Planning desk, Deck 4, Midship for more information. Disney Vacation Planning tends to get busy on the last day of sailing. Don't miss the opportunity to plan your next Disney vacation.

DISNEY VACATION CLUB® GROUP PREVIEW

Join us for our interactive group presentation to learn about taking magical vacations year after year! For more information, please see a Disney Vacation Club Cast Member on Deck 4, Midship, or call 7-2805 from your stateroom phone.

PORT SHOPPING INFORMATION

Come and meet Celia, your Port Shopping Guide, at the Port Shopping Desk, Deck 3, Midship from 7:00 pm - 8:30 pm for a complimentary charm. Don't miss the Port Shopping Talk on Day at Sea 1 in the Buena Vista Theatre, Deck 5, Aft, at 11:00 am for all of your Port Shopping information and to enter a raffle for a chance to win a Diamond Pendant. Tune into Channel 24-6 all cruise long for more Port Shopping information.

Connect@Sea

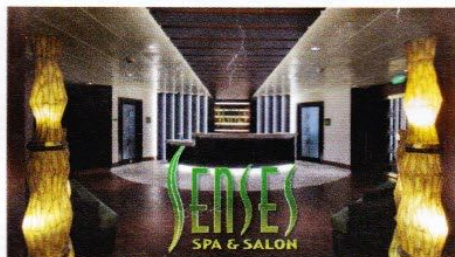
FREE INTERNET EMBARKATION DAY SPECIAL

Sign up for a free 50 MB Internet package today and enjoy it throughout the cruise! This offer is only available from noon to midnight on the day your cruise begins. On your wireless device, simply find the "DCL-Guest" Wi-Fi Network, go to www.dclguest.com to create an account, and get your free 50 MB of data to start sharing your memories even before you leave port! If you have any questions, ask our Connect@Sea Expert located at Deck 3, Midship. No purchase necessary. The free 50 MB package can only be used for the duration of the cruise. Only one free package per stateroom, but everyone can share it. Unused data from a package will not be reimbursed and it is non-transferable between voyages or ships.

RELIGIOUS SERVICES

Groups who need a location to practice their faith may contact Guest Services for availability information.

SENSES SPA & SALON



DECK 9, FORWARD
Extension 7-1465

RAINFOREST

Come enjoy our serenity lounge, with heated chairs, dry sauna, aromatherapy steam rooms and rainfall, misting showers. 5 Day Pass: Couples \$169 Single \$114

REJUVENATION SPA CONSULTATIONS

Ready to enhance your natural beauty? Book your free Facial Rejuvenation consultation with our Rejuvenation Dr. at the Senses Spa.

ONBOARD ACUPUNCTURE

Acupuncture is a safe and effective medicine that allows your body to heal itself, and is effective for various health conditions. See your onboard Acupuncturist for your free consultation.

IONITHERMIE

Lose between 1 - 8 inches. Speed up your metabolism. Firm muscle tone. Improve appearance of cellulite. \$155/1 session or \$299/3 sessions.

BIOTEC FACIALS

Our revolutionary facials address skin tone, blemishes and fine lines to transform the texture of the skin. The ultrasonic peel, massage and light therapy deliver a complexion that has never been smoother.

AN 18% AUTO GRATUITY IS ADDED TO ALL SENSES SPA SERVICES.

MERCHANDISE SHOPPING



DECK 4, FORWARD

EFFY MILLION DOLLAR EMERALD UNVEILING

Stop by White Caps, Deck 4, Forward, for the Effy Million Dollar Emerald Unveiling! We will be showcasing a rare & magical collection of alluring Emeralds at spectacular duty-free prices. White Caps, Deck 4, Forward.

HELPFUL SHOPPING TIP

While shopping onboard, you may collect your items from both stores before proceeding to checkout at any register. No need to have to wait in line in each store to pay for your items separately! Mickey's Mainsail and White Caps, Deck 4, Forward.

2018 DISNEY CRUISE LINE MERCHANDISE

Step into Mickey's Mainsail today and commemorate your Disney Cruise with a wide selection of 2018 Disney Cruise Line merchandise starring Steamboat Willie. From casual apparel to drinkware, you are sure to find a special souvenir for the whole family.

THE DISNEY PARKS COLLECTION BY PANDORA JEWELRY

The Disney Parks Collection by PANDORA Jewelry features hand-finished, 925 sterling silver and 14K gold charms inspired by some of Disney's most beloved characters. Visit White Caps on Deck 4, Forward, where you'll find a specially designed sterling silver charm featuring a Disney Cruise Line ship.

DUE TO PORT REGULATIONS, WHEN THE SHIP IS DOCKED, THE STORES WILL REMAIN CLOSED.

SHUTTERS PHOTO GALLERY



DECK 4, AFT

WELCOME ABOARD RAFFLE

View your embarkation photos in Shutters, Deck 4, Aft and enter our raffle for a chance to win a 10 Digital Photos valued at \$149.95. Winner must be present at the 10:00 pm drawing in Shutters, Deck 4, Aft. *Terms and conditions apply.

Visit Shutters on Deck 4, Aft for more information.

GET THE PICTURE!

Take home all your stateroom photos from this cruise on a USB! Terms and conditions apply. Visit Shutters on Deck 4, Aft and ask your friendly Shutters staff for more information. Get The Picture! Hurry! Order yours now.

PHOTO BOOK

Turn your magical vacation memories into an impressive keepsake with a personalized PhotoBook. Order by 9:30 pm on the final night of the cruise.

PRIVATE STUDIO PORTRAITURE

Book our exclusive and contemporary Private Studio experience today and capture these memories. No obligation to purchase. Black and White only.

PHOTOS ARE AVAILABLE FOR VIEWING ON OUR INTERACTIVE PHOTO KIOSKS APPROXIMATELY FIVE HOURS AFTER BEING TAKEN AND ARE ONLY AVAILABLE FOR PURCHASE DURING THIS CRUISE.

IMPORTANT INFORMATION

Security Notice

All Guests (including children) who wish to disembark the ship are required to present their Key to the World card at the gangway. A photo ID is also required for those Guests who are 18 years of age or older. Guests under the age of 18 are required to have a parent, guardian or other responsible adult sign an authorization form at the Guest Service Desk if they wish to go ashore unaccompanied or with any adult from another stateroom.

Inclement Weather

For the safety of all Guests, outdoor events may be changed due to unforeseen weather conditions.

Insect Repellent Advisory

The Centers for Disease Control and Prevention recommends wearing long-sleeved shirts and pants along with insect repellent to protect against mosquito bites and related illnesses when going ashore. Complimentary insect repellent is available on the pier as you exit the ship. Insect repellent is also available for purchase in White Caps. When using both sunscreen and insect repellent, use sunscreen first and apply insect repellent on top of sunscreen.

Corridor Quiet Hours

As a courtesy to all our Guests, please recognize quiet hallway hours from 10:00 pm til 8:00 am.

Environmental Message

With Disney's commitment to the Environment, please refrain from throwing anything over the Ship's side. Thank you!

No Reserved Seats Policy

As a courtesy to all our Guests, we kindly advise that the saving of seats is not permitted in the Walt Disney Theatre, and the saving of the sun loungers is not permitted on Deck 9 and 10. Items left unattended will be returned to lost and found at Guest Services, Deck 3 Midship.

Cold and Flu Reminder

Please wash hands frequently and thoroughly, particularly before meals. Contact the Health Center by dialing 7-1927, should anyone in your party become ill.

Smoking

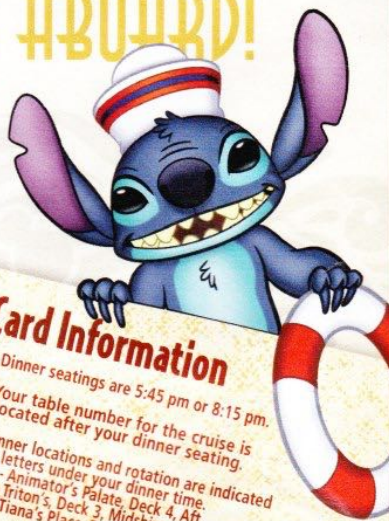
For the comfort of our Guests, the following areas are designated as smoking areas: *Deck 9, Forward, Port Side *Deck 4, Starboard side from 6:00 pm to 6:00 am only (all of Deck 4 is non-smoking from 6:00 am to 6:00 pm) Smoking is prohibited inside all Guest staterooms and on stateroom verandahs. Guests found smoking in their staterooms or on their verandahs will be charged a \$250 stateroom recovery fee. Electronic cigarettes may only be used in designated smoking areas.

Walt Disney Theatre

Theatrical performances may use artificial fog, strobe lights, pyrotechnics and other special effects. For the safety of our performers and the comfort of those around you, the use of any photography, video recording device or any electronic equipment is prohibited.

Verandah Safety

Please do not leave any personal items on your verandah that may be blown overboard or present a fire hazard if left unattended. Guests should not sit, lean or climb on the railing or leave children unattended on the verandah. Do not open the verandah and stateroom doors simultaneously as this may create a wind effect and could cause the doors to slam unexpectedly.



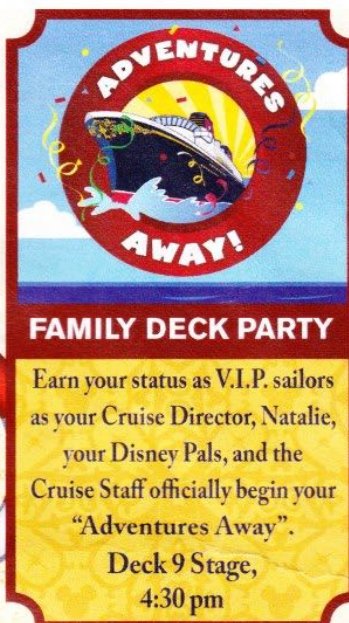
In case of an emergency,
your lettered Assembly
Station is indicated here

Information

- ♥ Dinner seatings are 5:45 pm or 8:15 pm.
- ♥ Your table number for the cruise is located after your dinner seating.



Dinner locations and rotation are indicated by letters under your dinner time.

AP - Animator's Palate, Deck 4, Aft
TR - Triton's, Deck 3, Midship
TP - Tiana's Place, Deck 3, Aft



DRINK
OF THE DAY

DRINK OF THE DAY

Afternoon	1:45	2:00	2:15	2:30	2:45	3:00	3:15	3:30	3:45	4:00	4:15	4:30	4:45	5:00	5:15	5:30	5:45	6:00	6:15	6:30	6:45	
FUNNEL VISION	The Princess and the Frog (G) Open Captioning Funnel Vision											Adventures Away Deck 9 Stage		The Hunchback of Notre Dame (G) Open Captioning Funnel Vision								
BUENA VISTA THEATRE	Join the Lion Guard Oceaneer Club											Black Panther (PG-13) Duration: 2 Hours 14 Minutes Pluto Lobby Atrium (P)		Mickey Lobby Atrium (P)								
CHARACTERS												 Deck 9 Stage		Pop Hits with Supernova Duo Lobby Atrium		Red Carpet Arrivals		 Walt Disney Theatre				
FUN FOR ALL AGES	Walking Ship Tour Preludes				Walking Ship Tour Preludes				Refer to the posted drill instructions on the back of your stateroom door prior to heading to Deck 4. Please bring your Key to the World Card.													
	Join the Lion Guard Oceaneer Club				Youth Activities Tour Oceaneer Lab				You will not need your life jacket for the Guest Assembly Drill.													
ADULTS	Spa Open House Senses Spa Fitness Center					Spa Raffle Senses Spa Fitness Center				Cruisin' Solo Gathering Cove Cafe												
VIBE 14-17 YEARS OLD	Youth Activities Open House													Youth Activities Open House								
EDGE 11-14 YEARS OLD	Youth Activities Open House													Youth Activities Open House								
OCEANEER LAB 3-12 YEARS OLD	Youth Activities Open House				Youth Activities Tour		Open House															
OCEANEER CLUB 3-12 YEARS OLD	Open House Join the Lion Guard				Youth Activities Open House				Your Assembly Station is indicated on your Key To The World card.													
												 Senses Spa Fitness Center		Youth Activities Open House		Open for Teens						
												Youth Activities Open House		Open for Tweens								
												Youth Activities Open House				Ice Breakers						
												Youth Activities Open House				Miles' Cosmic Explorers						



Evening	7:00	7:15	7:30	7:45	8:00	8:15	8:30	8:45	9:00	9:15	9:30	9:45	10:00	10:15	10:30	10:45	11:00	11:15	11:30	11:45	12:00
FUNNEL VISION			Frozen Fever (G) Funnel Vision		The Incredibles (PG) Open Captioning Funnel Vision									Guardians of the Galaxy (PG-13) Funnel Vision							
BUENA VISTA THEATRE					Black Panther (PG-13) Duration: 2 Hours 14 Minutes											A Wrinkle in Time (PG) Open Captioning Duration: 1 Hour 49 Minutes					
CHARACTERS			Pluto Lobby Atrium (P)									Pluto Lobby Atrium (P)									
					Mickey Lobby Atrium (P)									Minnie Lobby Atrium (P)							
FUN FOR ALL AGES		Family Dance Party Promenade Lounge	 D Lounge			Red Carpet Arrivals Azure	 Walt Disney Theatre					 D Lounge		 D Lounge							
			Disney Vacation Club Members Preview Azure										Acoustic Sounds with Ed Harvey Lobby Atrium								
ADULTS			TV Tunes Trivia Crown & Fin Pub										100% Society Sir L. Blend it, Taste it Cove Cafe	Seriously?! Azure		Wonder Quest Azure		Cruise Staff DJ Azure		Piano Requests with Chuck Perry Cadillac Lounge	
VIBE 14-17 YEARS OLD				Guitar Hero Challenge			Wii Challenge				Ice Breakers		Profiles		The Download		Heroes and Villains				
EDGE 11-14 YEARS OLD				GAGA Ball			Ice Breakers			Profiles			Taking it to The Edge			Heroes and Villains					
OCEANEER LAB 3-12 YEARS OLD			Meet Your Counselors				Oceaneer Rangers				Lava Flow				Human Bingo			GAGA Ball			
OCEANEER CLUB 3-12 YEARS OLD			Welcome Party				Parachute Games				Once Upon a Time					MARVEL Super Hero Academy Avengers Assemble					

ON-YOUTH ACTIVITIES OPEN HOUSE
A non-secured program with activities for families, adults and children to enjoy together.

SUNDAY, MAY 6, 2018 - SAN DIEGO, CALIFORNIA



THE GOLDEN MICKEYS

WALT DISNEY THEATRE

Deck 4, Forward
6:15 pm & 8:30 pm

As a courtesy to all Guests, we kindly advise that the saving of seats is **not** permitted in the Walt Disney Theatre.

Assistance is available at the entrance to the Walt Disney Theatre 30 minutes prior to show time.

Character Meet & Greet Ticket Distribution

Port Adventures Desk, Deck 3, Midship - 12:00 pm - 2:00 pm

For Guests who did not reserve meet and greets online, a limited number of tickets are available today to meet some of your favorite Disney friends.

Princess Gathering ~ Frozen Meet and Greet
Tickets are required for each of these meet and greets.
Space is limited.

Character Appearances

JOIN THE LION GUARD

Disney's Oceaneer Club
2:00 pm

ADVENTURES AWAY

Deck 9 Stage - 4:30 pm

PLUTO

Lobby Atrium (P)
5:15 pm, 7:30 pm & 9:45 pm

MICKEY MOUSE

Lobby Atrium (P)
5:45 pm & 8:00 pm

MINNIE MOUSE

Lobby Atrium (P)
10:15 pm



(S) Starboard Side - (P) Port Side

For details of daily Disney character appearances, refer to the character line on your Navigator Grid, or the digital character board in the Lobby Atrium.
Lines close 15 minutes after advertised start time.

SHIP DIRECTORY

YOUTH ACTIVITIES

DISNEY'S OCEANEER CLUB	DECK 5, MID	12:00 PM - 3:30 PM 4:30 PM - 12:00 PM
DISNEY'S OCEANEER LAB	DECK 5, MID	12:00 PM - 3:30 PM 4:30 PM - 12:00 PM
EDGE	DECK 9, MID	12:00 PM - 3:30 PM 4:30 PM - 12:00 PM
IT'S A SMALL WORLD NURSERY	DECK 5, AFT	12:00 PM - 3:30 PM 4:30 PM - 11:00 PM
VIBE	DECK 10, MID	12:00 PM - 3:30 PM 4:30 PM - 12:00 PM

POOLS

Children under 12 years of age must have adult supervision in all pools.

AQUALAB	DECK 9, AFT	12:00 PM - 3:30 PM 4:30 PM - 6:00 PM
DORY'S REEF	DECK 9, AFT	12:00 PM - 3:30 PM 4:30 PM - 6:00 PM
GOOBY'S POOL	DECK 9, MID	12:00 PM - 3:30 PM 6:00 PM - 10:00 PM
QUIET COVE POOL (18+)	DECK 9, FWD	12:00 PM - 3:30 PM 4:30 PM - 11:00 PM
TWIST N' SPOUT	DECK 9, AFT	12:00 PM - 3:00 PM 4:30 PM - 6:00 PM

Please note, "selfie sticks" are not permitted in any aquatic area.
Complimentary pool vests are available for children to use in the pools onboard.
They are located on the pool deck.

RECREATION

CHILL SPA	DECK 9, FWD	12:00 PM - 10:00 PM
PORT ADVENTURES DESK	DECK 3, MID	12:00 PM - 3:30 PM 4:30 PM - 8:30 PM
SENSES FITNESS CENTER (18+)	DECK 9, FWD	12:00 PM - 10:00 PM
WIDE WORLD OF SPORTS DECK	DECK 10, FWD	12:00 PM - 3:30 PM 3:30 PM - 11:59 PM

GENERAL INFORMATION

BUENA VISTA THEATRE	DECK 5, AFT	SHOWTIMES
CONNECT@SEA DESK	DECK 3, AFT	1:00 PM - 4:00 PM 7:00 PM - 10:00 PM
DISNEY VACATION CLUB DESK	DECK 4, MID	5:00 PM - 10:00 PM
DISNEY VACATION PLANNING DESK	DECK 4, MID	7:00 PM - 8:30 PM
FUNNEL VISION	DECK 9, MID	SHOWTIMES
GUEST SERVICES	DECK 3, MID	24 HOURS
HAIR BRAIDING	DECK 9, MID	4:00 PM - 6:00 PM
MEDICAL HEALTH CENTER	DECK 1, FWD	4:30 PM - 7:00 PM
PORT SHOPPING DESK	DECK 3, MID	7:00 PM - 8:30 PM
PRELUDES	DECK 4, FWD	SHOWTIMES
SENSES SPA AND SALON	DECK 9, FWD	12:00 PM - 10:00 PM
SHUTTERS PHOTO GALLERY	DECK 4, AFT	6:00 PM - 10:30 PM
WALT DISNEY THEATRE	DECK 4, FWD	SHOWTIMES

SHOPPING

ART GALLERY	DECK 4, MID	7:00 PM - 8:00 PM
BIBBIDI BOBBIDI BOUTIQUE	DECK 10, FWD	12:00 PM - 3:00 PM 5:00 PM - 9:00 PM
MICKEY'S MAINSAIL	DECK 4, FWD	6:00 PM - 11:00 PM
QUACKS	DECK 9, MID	
SEA TREASURES	DECK 3, FWD	6:30 PM - 10:00 PM
WHITE CAPS	DECK 4, FWD	6:00 PM - 11:00 PM

TIME ZONE CHANGE

Remember to turn your clocks **FORWARD 1 HOUR**
upon retiring on **SUNDAY** evening,
or first thing **MONDAY** morning.



EVENING ATTIRE Cruise Casual

WEATHER Today: Sunny
FORECAST High: 70 F/21°C

DINING & LOUNGES

LUNCH

CABANAS	DECK 9, AFT	12:00 PM - 3:00 PM
DAISY'S DE LITES	DECK 9, AFT	12:00 PM - 3:30 PM
PINOCCHIO'S PIZZERIA	DECK 9, MID	12:00 PM - 3:30 PM 4:30 PM - 6:00 PM
PETE'S BOILER BITES	DECK 9, AFT	12:00 PM - 3:30 PM
TRITON'S (A-LA CARTE)	DECK 3, MID	11:45 AM - 1:30 PM

DINNER

ANIMATOR'S PALATE	DECK 4, AFT	5:45 PM & 8:15 PM
DAISY'S DE LITES	DECK 9, AFT	4:30 PM - 6:00 PM
PALO (18+)	DECK 10, AFT	6:00 PM - 8:30 PM
PETE'S BOILER BITES	DECK 9, AFT	4:30 PM - 9:30 PM
TIANA'S PLACE	DECK 3, AFT	5:45 PM & 8:15 PM
TRITON'S	DECK 3, MID	5:45 PM & 8:15 PM

LATE NIGHT SNACKS

CROWN & FIN PUB (18+ AFTER 9:00 PM)	DECK 3, FWD	10:30 PM - 11:30 PM
PINOCCHIO'S PIZZERIA	DECK 9, MID	9:30 PM - 12:00 AM
PROMENADE LOUNGE	DECK 3, AFT	10:30 PM - 11:30 PM

ADDED FEATURES

BEVERAGE STATION	DECK 9, AFT, PORT SIDE	24 HOURS
EYE SCREAM	DECK 9, MID	12:00 PM - 3:30 PM 4:30 PM - 11:00 PM
ROOM SERVICE	DIAL 4330	OPENS AT 1:30 PM

ENTERTAINMENT - LOUNGES - BARS

Adults must be 21 and older to consume alcoholic beverages.

AZURE (18+ AFTER 9:00 PM)	DECK 3, FWD	7:30 PM - 1:30 AM
CADILLAC LOUNGE (18+)	DECK 3, FWD	6:00 PM - 12:00 AM
COVE CAFE (18+)	DECK 9, MID	11:45 AM - 12:00 AM
CROWN & FIN PUB (18+ AFTER 9:00 PM)	DECK 3, FWD	11:45 AM - 12:00 AM
D LOUNGE	DECK 4, MID	SHOWTIMES
PINOCCHIO'S PIZZERIA	DECK 9, MID	11:45 AM - 12:00 AM
PRELUDES	DECK 4, FWD	SHOWTIMES
PROMENADE LOUNGE	DECK 3, AFT	11:45 AM - 12:00 AM
SIGNALS (18+)	DECK 9, FWD	11:45 AM - 10:30 PM
SULLY'S SIPS	DECK 9, MID	11:45 AM - 6:00 PM

Public Health Advisory: Consuming raw or under-cooked meats, poultry, seafood, shellfish, or eggs may increase your risk for food borne illness, especially if you have certain medical conditions.

Disney Cruise Line
PORT ADVENTURES
Explore and more with our carefully selected
Port Adventures. Visit the Port Adventures Desk,
Deck 3, Midship to find out more.

IMPORTANT NUMBERS

Fire/Security: 7-3001
Medical EMERGENCY: 7-3000
Health Center: 7-1927