

# VOYAGE NAVIGATOR



WEEK 1

SUNDAY  
APRIL 8, 2018

TO

SUNDAY  
APRIL 22, 2018

## CRUISE HIGHLIGHTS

### SUNDAY

PORT CANAVERAL  
Port Departure: 5:00 pm  
All Aboard: 4:00 pm  
Attire: Cruise Casual



**BE OUR GUEST - WELCOME ABOARD SHOW**  
Walt Disney Theatre  
6:15 pm & 8:30 pm

### MONDAY

DISNEY CASTAWAY CAY  
All Ashore: 8:30 am  
All Aboard: 4:45 pm  
Attire: Cruise Casual



**SHOWTIME: JEFF CIVILLICO**  
Walt Disney Theatre  
6:15 pm & 8:30 pm

### TUESDAY

DAY AT SEA  
Attire: Formal

THE  
**GOLDEN  
MICKEYS**

**THE GOLDEN MICKEYS**  
Walt Disney Theatre  
6:15 pm & 8:30 pm

### WEDNESDAY

DAY AT SEA  
Attire: Cruise Casual

### THURSDAY

CARTAGENA  
All Ashore: 7:30 am  
All Aboard: 2:45 pm  
Attire: Cruise Casual

### FRIDAY

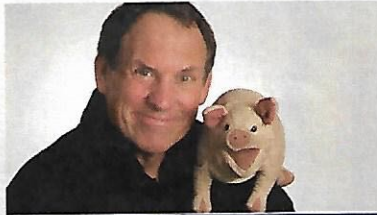
PANAMA CANAL  
Attire: Cruise Casual

### SATURDAY

DAY AT SEA  
Attire: Cruise Casual



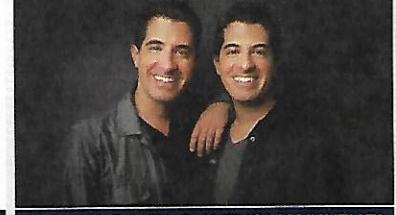
**SHOWTIME: THE FILHARMONIC**  
Walt Disney Theatre  
6:15 pm & 8:30 pm



**SHOWTIME: TAYLOR MASON**  
Walt Disney Theatre  
6:15 pm & 8:30 pm



**SHOWTIME: MARYELLEN HOOPER**  
Walt Disney Theatre  
6:15 pm & 8:30 pm



**SHOWTIME: WILL & ANTHONY NUNZIATA**  
Walt Disney Theatre  
6:15 pm & 8:30 pm

Subject to change.

## WELCOME ABOARD!

### YOUR STATEROOM & LUGGAGE

Staterooms will be ready at 1:30 pm. To allow your Stateroom Host/ess time to prepare your room, please do not remove the blue stanchion straps. Stateroom hosts will deliver luggage throughout the day until 5:30 pm.

### STATEROOMS WITH BUNK BEDS

Bunk beds are recessed into the ceiling and will be prepared during evening turndown service by your Stateroom Host/ess.

### STATEROOM SAFE

Each stateroom is equipped with a secured storage safe. Instructions for use are located on the safe.

### TO CHANGE DINING ASSIGNMENT

Requests for different seating times will be taken today:

- 12:00 pm - 3:00 pm; Book in D Lounge, Deck 4, Midship or please dial 7-10891 and leave a voicemail.

### PALO DINING RESERVATIONS

Reservations are required and will be taken on a first come basis today:

- 12:00 pm - 3:00 pm; Book in D Lounge, Deck 4, Midship or please dial 7-6843 and leave a voicemail.

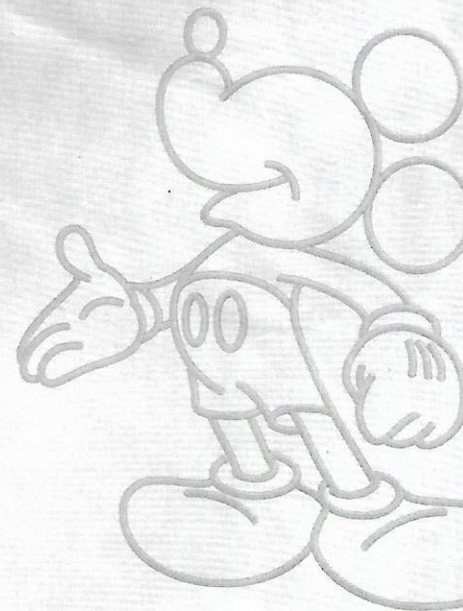
**Adult Exclusive Dining Opportunity!** Guests are invited to make 2 dinner reservations at our adult-exclusive restaurant, Palo. This includes one reservation on embarkation evening and one more on another night of the cruise. Reservations are subject to availability and a specialty dining charge will apply.

### DINNER

5:45 pm - First seating 8:15 pm - Second seating

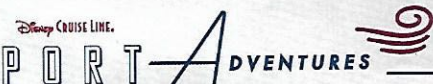
Please check your Key To The World Card for details of your dining rotation, and bring them to your specific dining location. There is no need to wait in line prior to dinner. Dining Rooms open at designated seating times and your table is reserved each night of your cruise.

AP = Animator's Palate, Deck 4, Aft TR = Triton's, Deck 3, Midship TP = Tiana's Place, Deck 3, Aft



Create the most memorable experiences during your Disney Cruise Line vacation with Port Adventures! Our Port Adventures are designed for you to see the best our ports have to offer. Stop by the Port Adventures Desk, Deck 3, Midship where our friendly team will be happy to assist you plan your adventure!

There is an adventure for everyone on your Disney Wonder® vacation.



### IMPORTANT NUMBERS

Fire/Security: 7-3001

Medical Emergency: 7-3000

Health Center: 7-1927



## FEATURED VARIETY ACTS THIS WEEK



**THE PHYSICAL COMEDY OF JEFF CIVILICO**  
Jeff Civillico's "Comedy in Action" show blends physical comedy, action-packed stunts, and world class juggling, balancing with friendly audience interaction and insane amount of energy! His list of accolades include "Best of Las Vegas", "1 of the Top 10 Things To Do In Vegas", and "Entertainer of the Year" by Vegas Inc.



**THE MAGIC, BALLOONS & COMEDY OF JOHN CASSIDY**  
John Cassidy's bizarre antics have earned him widespread acclaim as one of the most original comedians performing today. The world of magic has taken a special shine to John and he is now among the most requested acts at various conventions and seminars throughout the world.



**THE ACAPPELLA MUSICAL BAND, THE FILHARMONIC**  
The Filharmonic, a Los Angeles-based acappella group has much to sing about. The 5-piece vocal group made the semi-finals of NBC'S hit musical competition, The Sing-Off, and were featured in the Universal Pictures hit movie, Pitch Perfect 2, then became a viral sensation after their Late Late Show appearance.



**THE COMEDY & VENTRILOQUISM OF TAYLOR MASON**  
There is truly no other comedy entertainer in the world like TAYLOR MASON. Combining music, ventriloquism, stand-up comedy and audience participation in a solo performance that has no equal, this former Star Search Grand Champion has been making audiences laugh, very hard, for almost three decades.



**THE COMEDY OF MARYELLEN HOOPER**  
A physical, story-teller, Maryellen's act is an ever-evolving story about her life as a woman, wife and mother. A veteran in the world of stand-up, Maryellen Hooper's comedy has taken her from clubs and colleges to theaters and television. She's appeared on "The Dennis Miller Show", "The Martin Short Show", "The Tonight Show" with Jay Leno and has had her own ½ hour special on Comedy Central called "Lounge Lizards".



**THE MUSICAL TALENTS OF WILL AND ANTHONY NUNZIATA**  
Classically-trained tenors and Upright Citizens Brigade trained comedians, Will & Anthony Nunziata wow sold out audiences all across the country with their inspiring and fresh takes on songs ranging from pop standards and classical crossovers to Broadway and movie-bound original songs.

## GUEST PRESENTERS THIS WEEK

### CAPTAIN KENNETH PUCKETT

Retired Master Mariner-US Navy-US Army and Senior Panama Canal Pilot and Port Captain; Captain Puckett, adjunct Professor of Marine Science was selected by the Panama Canal Commission to join the elite corps of Panama Canal Pilots. For 16 years he worked as a Senior Panama Canal Pilot and Canal Port Captain during which time he safely piloted over 1440 merchant and military vessels through the Panama Canal.

### CHEF NICK CRISPINO

Nick Crispino, Chef at Jungle Skippers Canteen, studied at The Culinary Institute Of America and brings you a wealth of experience in our Adult Exclusive, Anyone Can Cook Culinary Series. In each session he will demonstrate and cook mouthwatering cuisines. Recipes and tastings included.

### BALLROOM DANCERS, WILLEM AND NATALIA

A native of Moscow, Natalia studied ballet and classical piano as a child and pursued her love of the arts at the Russian Academy of Theatre Arts, where she received an MFA with honors. After graduation, she danced professionally in Moscow before touring the world as a performer. Willem de Vries has been a professional Ballroom & Latin dancer, instructor, competitor, and choreographer for 17 years. During that time he has competed and taught around the world and won various regional, national, and international awards and titles. Willem currently works with Dancing With The Star's Louis Van Amstel as one of the master trainer's in Louis' highly successful LaBlast ballroom dance fitness program.

### PAIGE O'HARA

Paige O'Hara is widely known as Disney's heroine, Belle, in the critically acclaimed, Oscar-winning animated film Beauty and the Beast, a Disney Classic which she proudly added to a career that has spanned from Broadway to opera, concert stages and recordings. Her many stage appearances include playing Ellie May Chipley in the Broadway revival of Showboat starring Donald O'Connor; as Fantine in the award-winning Les Miserables on Broadway; and as Edwin Drood in both the Broadway and national tour of The Mystery of Edwin Drood.

## ADULT ACTIVITY HIGHLIGHTS



### 1820 SOCIETY (GUESTS 18-20 YEARS ONLY)

1820 Society is an exclusive option for young adult Guests. Come meet fellow passengers and learn about the excellent activities that the Disney Wonder offers to create the perfect cruise experience.

### ART OF THE THEME SHOW TOUR

Join us for a guided tour highlighting the design, Imagineering and artistry of the ship. This tour is reserved for Guests 18 and over. Please book at Guest Services, Deck 3, Midship.

### CRUISIN' SOLO GATHERING

Single, single parent or just traveling alone? Join your Cruise Staff for an informal gathering.



*Senses Spa & Salon has a variety of seminars and fitness classes available throughout the cruise. Pamper yourself with therapeutic spa treatments of heat, steam, rain and water in luxurious and tranquil private rooms. Deck 9, Forward.*

### BEVERAGE SEMINARS

Your Beverage team has a host of tastings and seminars to entertain and educate you.

Stop by D Lounge, Deck 3, Aft to pre-book these experiences (nominal fee applies).

Mixology - Stem to Stem Wine Tasting - Martini Tasting - Champagne Tasting

Beer Tasting - Cognac Tasting - Whisky Tasting

Tequila & Margarita Tasting - Chocolate & Liquor Tasting - Rum Tasting

## PANAMA CANAL INFORMATION

Stretching approximately 48 miles long, the Panama Canal is an international water passage between North and South America that connects the Atlantic to the Pacific. The canal passes through the Isthmus of Panama, allowing sea voyagers to save precious travel time and resources. A masterful feat of engineering, this legendary waterway is revered as one of the 7 wonders of the modern world. However, the "Path between the Seas" is not a natural wonder, it's a man-made triumph involving a series of lifts and lock gates made to raise ships and transport them through the waterway.

As you travel through the Panama Canal, have your camera at the ready! Bordered by lush, tropical rainforests, the canal is a spectacular sight full of photographic potential.

For those who can't make it out on deck, Bridge camera and Panama Canal narration is available on Channel 27-1.

### FACTS ABOUT THE ORIGINAL PANAMA CANAL

- The official opening of the Panama Canal was August 15, 1914.
- The 50-mile long passage created an important shortcut for ships traveling between New York and California trimming nearly 8,000 miles from their voyage.
- Between 12,000 & 15,000 ships cross the Panama Canal every year.
- Every ship that transits the canal must pay a toll based on its size and cargo volume. Tolls for large ships can be as high as \$450,000.
- The lowest toll ever paid was \$0.36 cents by Richard Haliburton who swam the canal.
- A system of locks raises each ship 85 feet above sea level.

### FACTS ABOUT THE NEW PANAMA CANAL

- The Panama Canal expansion started in 2007 and was completed in June 2016.
- The estimated cost of building the new locks was \$5.25 billion dollars.
- The allowed length of ships increased from 965 feet to 1200 feet. The allowed width of ships increased from 106 feet to 160 feet.
- The new lock chambers are 180 feet wide, 1,400 feet long and 60 feet deep.
- The new lock chambers hold 65% more water than the original locks and use 7% less water per transit.
- The total annual tonnage traveling through the Panama Canal will increase from 275 million tons to 600 million tons.
- The Disney Wonder was the first passenger ship to navigate entirely through the new locks - Aqua Clara and Cocoli.



# FUN FOR ALL AGES HIGHLIGHTS



## BOAT BUILDING BASH SIGN-UPS

Is your team up to the challenge to build your own boat? It will take imagination and creativity.



## CASTAWAY CAY 5K REGISTRATION (10+)

Sign up today for the Castaway Cay 5K! Please visit the Port Adventures Desk or the Guest Services Desk to register at anytime prior to our arrival at Disney Castaway Cay. Please note that runners must be 10 years of age or older to participate.



## FAMILY TALENT SHOW SIGN UP

Pre-register at the Port Adventures Desk, Deck 3, Midship Let your family take center stage and strut their stuff. Everyone has a talent, it's time to show off yours! Pre-register at the Port Adventures Desk.

## GOOD MORNING DISNEY WONDER

Get your day started with your Cruise Director and Special Guest, to find out what exciting events are happening around the ship each day! On our Days at Sea, come sit in the audience and be a part of the live broadcast in D Lounge, Deck 4, Midship or watch live and on our Port Days on channel 28-3.

## PHOTO CHALLENGES

Stop by the Port Adventures Desk on selected Days at Sea to pick up that days photo challenge. Complete at your own leisure but please return the form before 10:00 pm that night. The winner will be announced on the Good Morning Disney Wonder show the following Day at Sea.

# YOUTH ACTIVITIES INFORMATION



0 - 3  
Years Old



3 - 12  
Years Old



3 - 12  
Years Old



11 - 14  
Years Old



14 - 17  
Years Old

### Dine & Play

As a convenience for families dining at 8:15 pm, our Youth Activities counselors will be available at the entrance of each restaurant to bring registered children to join the fun in the Youth Activities areas at the following times:

9:15 pm at the entrance of Triton's,  
9:30 pm at the entrance of Tiana's Place and Animator's Palate.

### Pre-School Fun

Disney's Oceaneer Club is reserved for only those between 3-5 years of age. This is a time for them to become acclimated to Disney's Oceaneer Club, make new friends and join in on a lot of fun-filled programs and activities. Please note after Pre-School Fun has concluded, Disney's Oceaneer Club will be open for Secured Programming for ages 3-12.

### Youth Activities Open House

Open House is an opportunity for all to come and participate in a variety of exciting activities and free time in the Oceaneer Club, Oceaneer Lab, Edge and Vibe throughout the cruise. During these times secured programming will still be offered in the other venue for those looking to check their children into care.

### Youth Activities Venue Tour

Come and take a tour of Disney's Oceaneer Club and Disney's Oceaneer Lab. This informative tour will give you the information you need to know about our exciting spaces and activities offered for children ages 3-12. Please see your Personal Navigator or the Navigator App for times.

# COAST TO COAST CHARACTER CAMP OUT



Pick up your tickets today to reserve your place for the Youth Activities Coast To Coast Campout. This overnight event will be happening on Monday, April 16th at 10:00 pm and will be an opportunity to participate in activities throughout the evening and have a bedtime story read to your child in Disney's Oceaneer Club by a very special visitor. These tickets are on a first come first serve basis, so book your tickets now at the Port Adventures Desk, Deck 3 Midship to not miss out on this magical event. (Please note that all children ages 3-12 are able to participate in the event activities 10:00 pm - 11:30 pm in the Oceaneer Club. Tickets are only required for children ages 5-12 who wish to participate in the overnight sleepover.)

# BUENA VISTA THEATRE

Deck 5, Aft

## FEATURE MOVIES THIS WEEK

### SUNDAY - PORT CANAVERAL

1:45 pm	PG	Coco
5:15 pm	PG-13	Thor: Ragnarok
8:00 pm	PG-13	Thor: Ragnarok
10:30 pm	PG-13	Guardians of the Galaxy Vol. 2

### MONDAY - DISNEY CASTAWAY CAY

12:00 pm	G	Cars 3
2:15 pm	PG-13	Star Wars: The Last Jedi
5:15 pm	PG-13	Guardians of the Galaxy Vol. 2
8:00 pm	PG-13	Guardians of the Galaxy Vol. 2
10:30 pm	R	I, Tonya (2017)

Open Captioning

### TUESDAY - DAY AT SEA

8:30 am	G	Family Movie Fun Time: Cars 3
10:45 am	PG	Coco
2:30 pm	R	I, Tonya (2017)
5:15 pm	PG-13	Black Panther
8:00 pm	PG-13	Black Panther
10:45 pm	PG-13	Lion (2016)

3D

### WEDNESDAY - DAY AT SEA

8:30 am	PG	Family Movie Fun Time: Beauty and the Beast (2017)
11:15 am	PG	A Wrinkle in Time
1:45 pm	R	Blade Runner 2049 (2017)
5:00 pm	PG-13	Star Wars: The Last Jedi
8:00 pm	PG-13	Star Wars: The Last Jedi
11:00 pm	PG	A Wrinkle in Time

3D

### THURSDAY - CARTAGENA

12:15 pm	PG-13	Guardians of the Galaxy Vol. 2
3:00 pm	PG-13	The Theory of Everything (2014)
5:30 pm	R	The King's Speech (2010)
8:00 pm	R	The King's Speech (2010)
10:30 pm	PG-13	La La Land (2016)

3D

### FRIDAY - PANAMA CANAL

9:00 am	PG-13	Star Wars: The Last Jedi
12:15 pm	PG	A Wrinkle in Time
2:30 pm	PG	Beauty and the Beast (2017)
5:30 pm	PG	Coco
8:00 pm	PG	Coco
10:15 pm	PG-13	Star Wars: The Last Jedi

Open Captioning

3D

### SATURDAY - DAY AT SEA

3:00 pm	PG-13	Lion (2016)
5:30 pm	PG	A Wrinkle in Time
8:15 pm	PG	A Wrinkle in Time
10:30 pm	PG-13	Roman J. Israel, Esq. (2017)

Subject to change.



# MORE TO ENJOY ONBOARD

## NEW SUMMER 2019 ITINERARIES

New Summer 2019 Itineraries announced! Be among the first to experience special sailings in Europe, Alaska, the Caribbean, and the Bahamas with your family! Visit Disney Vacation Planning, Deck 4, Midship for more information. Disney Vacation Planning tends to get busy on the last day of sailing. Don't miss the opportunity to plan your next Disney vacation.

## DISNEY VACATION CLUB® GROUP PREVIEW

Join us for our interactive group presentation to learn about taking magical vacations year after year! For more information, please see a Disney Vacation Club Cast Member on Deck 4, Midship, or call 7-2805 from your stateroom phone.

## PORT SHOPPING INFORMATION

Come and meet Michael, your Port Shopping Guide, at the Port Shopping Desk, Deck 3, Midship from 7:00 pm - 8:30 pm for a complimentary charm. Don't miss the Port Shopping Talk on Day at Sea 1 in the Buena Vista Theatre, Deck 5, Aft, at 1:00 pm for all of your Port Shopping information and to enter a raffle for a chance to win a Diamond Pendant. Tune into Channel 24-6 all cruise long for more Port Shopping information.

## Connect@Sea

### FREE INTERNET EMBARKATION DAY SPECIAL

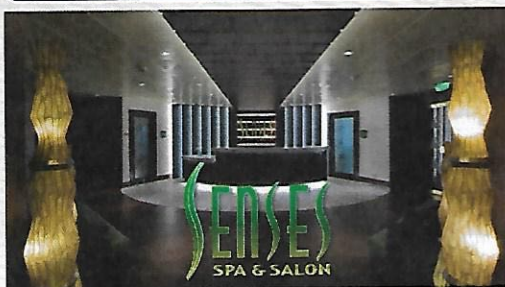
Sign up for a free 50 MB Internet package today and enjoy it throughout the cruise! This offer is only available from noon to midnight on the day your cruise begins. On your wireless device, simply find the "DCL-Guest" Wi-Fi Network, go to [www.dclguest.com](http://www.dclguest.com) to create an account, and get your free 50 MB of data to start sharing your memories even before you leave port! If you have any questions, ask our Connect@Sea Expert located at Deck 3, Midship. No purchase necessary. The free 50 MB package can only be used for the duration of the cruise. Only one free package per stateroom, but everyone can share it. Unused data from a package will not be reimbursed and it is non-transferable between voyages or ships.

### RELIGIOUS SERVICES

Groups who need a location to practice their faith may contact Guest Services for availability information.



## SENSES SPA & SALON



**DECK 9, FORWARD**  
Extension 7-1465

### RAINFOREST

Come enjoy our serenity lounge, with heated chairs, dry sauna, aromatherapy steam rooms and rainfall, misting showers.

### REJUVENATION SPA CONSULTATIONS

Ready to enhance your natural beauty? Book your free Facial Rejuvenation consultation with our Rejuvenation Dr. at the Senses Spa.

### ONBOARD ACUPUNCTURE

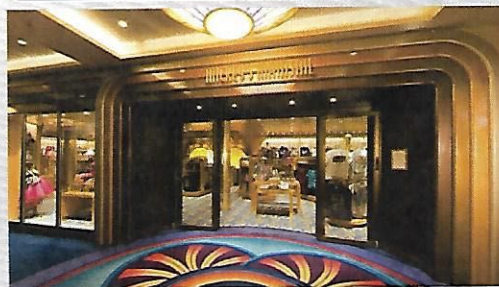
Acupuncture is a safe and effective medicine that allows your body to heal itself, and is effective for various health conditions. See your onboard Acupuncturist for your free consultation.

### IONTHERMIE

Lose between 1 – 8 inches? Speed up your metabolism. Firm muscle tone. Improve appearance of cellulite. \$155/1 session or \$299/3 sessions.

**AN 18% AUTO GRATUITY IS ADDED TO ALL SENSES SPA SERVICES.**

## MERCHANDISE SHOPPING



**DECK 4, FORWARD**

### BIBBIDI BOBBIDI BOUTIQUE

A makeover fit for a princess! Fairy Godmothers-in-Training are ready with magic and pixie dust to give your Prince and Princess the transformation of a lifetime. Make your reservations by visiting Bibbidi Bobbidi Boutique, Deck 10, Forward, Port Side, or dialing extension 7-10878. Limited space available.

### PANAMA MERCHANDISE

Commemorate this Panama Canal voyage with a specially designed Tervis, magnet, ornament, pin and hat for everyone in the family! Available at White Caps on Deck 4, Forward.

### DOONEY & BOURKE ONBOARD

Loved for their fine leather and unique designs, Dooney & Bourke creates styles that are sure to inspire. Visit White Caps and check out the Dooney & Bourke handbags designed especially for Disney Cruise Line. Deck 4, Forward.

### EFFY JEWELRY

Known for their bold designs, EFFY jewelry is meticulously crafted with every design overseen by its founder, who plays a key role in the journey of each piece. A stylish collection of EFFY jewelry pieces is now available onboard and are waiting for you to discover them in White Caps, Deck 4, Forward.

## SHUTTERS PHOTO GALLERY



**DECK 4, AFT**

### WELCOME ABOARD RAFFLE

View your embarkation photos in Shutters, Deck 4, Aft and enter our raffle for a chance to win a 10 Digital Photos valued at \$149.95. Winner must be present at the 10:00 pm drawing in Shutters, Deck 4, Aft. \*Terms and conditions apply. Visit Shutters on Deck 4, Aft for more information.

### GET THE PICTURE!

Take home all your stateroom photos from this cruise on a USB! Terms and conditions apply. Visit Shutters on Deck 4, Aft and ask your friendly Shutters staff for more information. Get The Picture! Hurry! Order yours now.

### PHOTO BOOK

Turn your magical vacation memories into an impressive keepsake with a personalized PhotoBook. Order by 9:30 pm on the final night of the cruise.

### PRIVATE STUDIO PORTRAITURE

Book our exclusive and contemporary Private Studio experience today and capture these memories. No obligation to purchase. Black and White only.

**PHOTOS ARE AVAILABLE FOR VIEWING ON OUR INTERACTIVE PHOTO KIOSKS APPROXIMATELY FIVE HOURS AFTER BEING TAKEN AND ARE ONLY AVAILABLE FOR PURCHASE DURING THIS CRUISE.**

## IMPORTANT INFORMATION

### Security Notice

All Guests (including children) who wish to disembark the ship are required to present their Key to the World card at the gangway. A photo ID is also required for those Guests who are 18 years of age or older. Guests under the age of 18 are required to have a parent, guardian or other responsible adult sign an authorization form at the Guest Service Desk if they wish to go ashore unaccompanied or with any adult from another stateroom.

### Inclement Weather

For the safety of all Guests, outdoor events may be changed due to unforeseen weather conditions.

### Insect Repellent Advisory

The Centers for Disease Control and Prevention recommends wearing long-sleeved shirts and pants along with insect repellent to protect against mosquito bites and related illnesses when going ashore. Complimentary insect repellent is available on the pier as you exit the ship. Insect repellent is also available for purchase in White Caps. When using both sunscreen and insect repellent, use sunscreen first and apply insect repellent on top of sunscreen.

### Corridor Quiet Hours

As a courtesy to all our Guests, please recognize quiet hallway hours from 10:00 pm til 8:00 am.

### Environmental Message

With Disney's commitment to the Environment, please refrain from throwing anything over the Ship's side. Thank you!

### No Reserved Seats Policy

As a courtesy to all our Guests, we kindly advise that the saving of seats is not permitted in the Walt Disney Theatre, and the saving of the sun loungers is not permitted on Deck 9 and 10. Items left unattended will be returned to lost and found at Guest Services, Deck 3 Midship.

### Cold and Flu Reminder

Please wash hands frequently and thoroughly, particularly before meals. Contact the Health Center by dialing 7-1927, should anyone in your party become ill.

### Smoking

For the comfort of our Guests, the following areas are designated as smoking areas:

\*Deck 9, Forward, Port Side  
\*Deck 4, Starboard side from 6:00 pm to 6:00 am only (all of Deck 4 is non-smoking from 6:00 am to 6:00 pm)  
Smoking is prohibited inside all Guest staterooms and on stateroom verandahs. Guests found smoking in their staterooms or on their verandahs will be charged a \$250 stateroom recovery fee. Electronic cigarettes may only be used in designated smoking areas.

### Walt Disney Theatre

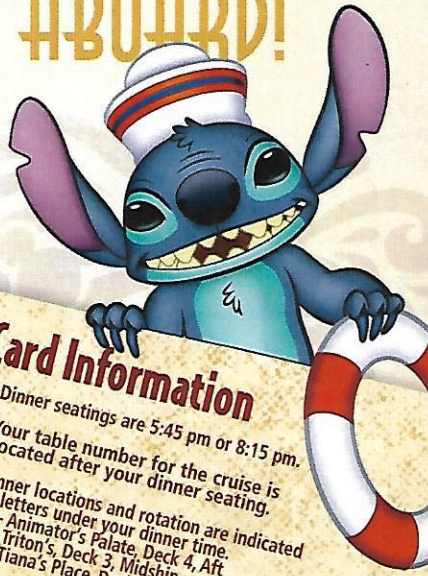
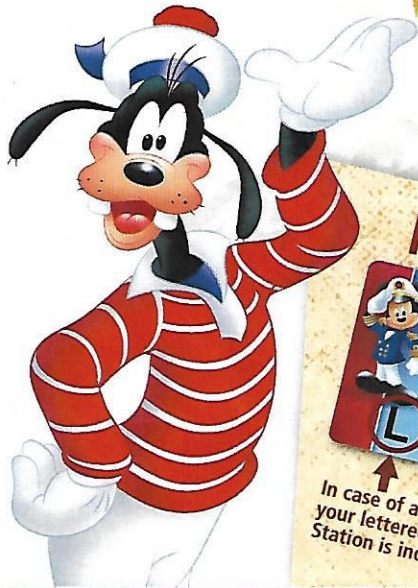
Theatrical performances may use artificial fog, strobe lights, pyrotechnics and other special effects. For the safety of our performers and the comfort of those around you, the use of any photography, video recording device or any electronic equipment is prohibited.

### Verandah Safety

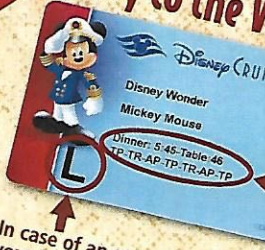
Please do not leave any personal items on your verandah that may be blown overboard or present a fire hazard if left unattended. Guests should not sit, lean or climb on the railing or leave children unattended on the verandah. Do not open the verandah and stateroom doors simultaneously as this may create a wind effect and could cause the doors to slam unexpectedly.



# WELCOME ABOARD!



## Key to the World Card Information



In case of an emergency, your lettered Assembly Station is indicated here.

- ♥ Dinner seatings are 5:45 pm or 8:15 pm.
- ♥ Your table number for the cruise is located after your dinner seating.
- ♥ Dinner locations and rotation are indicated by letters under your dinner time.  
AP - Animator's Palate, Deck 4, Aft  
TR - Triton's, Deck 3, Midship  
TP - Tiana's Place, Deck 3, Aft

### ADVENTURES AWAY!

## FAMILY DECK PARTY

Earn your status as V.I.P. sailors as your Cruise Director, Natalie, your Disney Pals, and the Cruise Staff officially begin your "Adventures Away".

**Deck 9 Stage, 4:30 pm**

Afternoon	1:45	2:00	2:15	2:30	2:45	3:00	3:15	3:30	3:45	4:00	4:15	4:30	4:45	5:00	5:15	5:30	5:45	6:00	6:15	6:30	6:45
FUNNEL VISION	The Hunchback of Notre Dame (G)  Open Captioning											Adventures Away Deck 9 Stage									
BUENA VISTA THEATRE	Coco (PG) Duration: 1 Hour 49 Minutes											The Princess and the Frog (G)  Open Captioning									
CHARACTERS												Thor: Ragnarok (PG-13) Duration: 2 Hours 10 Minutes									
FUN FOR ALL AGES	Walking Ship Tour Preludes											Mickey Lobby Atrium (P)									
ADULTS	Spa Open House Senses Spa Fitness Center											Acoustic Music with Supernova Duo Promenade Lounge									
VIBE 14-17 YEARS OLD	Youth Activities Open House											Youth Activities Open House									
EDGE 11-14 YEARS OLD	Youth Activities Open House											Youth Activities Open House									
OCEANEER LAB 3-12 YEARS OLD	Youth Activities Open House & Registration											Youth Activities Open House									
OCEANEER CLUB 3-12 YEARS OLD	Youth Activities Open House & Registration											Youth Activities Open House									

### Mandatory Guest Assembly Drill 4:00 pm (All Guests must attend)

All ship services will be suspended during this time.

Refer to the posted drill instructions on the back of your stateroom door prior to heading to Deck 4. Please bring your Key to the World Card.

You will not need your life jacket for the Guest Assembly Drill.



Your Assembly Station is indicated on your Key To The World card.

## PANAMA CANAL

Evening	7:00	7:15	7:30	7:45	8:00	8:15	8:30	8:45	9:00	9:15	9:30	9:45	10:00	10:15	10:30	10:45	11:00	11:15	11:30	11:45	12:00
FUNNEL VISION	Frozen Fever (G) Funnel Vision											Guardians of the Galaxy (PG-13) Funnel Vision									
BUENA VISTA THEATRE	Thor: Ragnarok (PG-13) Duration: 2 Hours 10 Minutes											Guardians of the Galaxy Vol. 2 (PG-13) Duration: 2 Hours 16 Minutes									
CHARACTERS	Minnie Lobby Atrium (P)											Minnie Lobby Atrium (P)									
FUN FOR ALL AGES	Mickeymania! D Lounge											Family Dance Party D Lounge									
ADULTS	Pub Quiz Crown & Fin Pub											The Physical Comedy of JEFF CIVILICO Azure									
VIBE 14-17 YEARS OLD	Guitar Hero Challenge											Ice Breakers Azure									
EDGE 11-14 YEARS OLD	Wii Challenge											Taking it to The Edge Ninja									
OCEANEER LAB 3-12 YEARS OLD	Ice Breakers											Youth Activities Open House									
OCEANEER CLUB 3-12 YEARS OLD	Welcome Party											Once Upon a Time									

DRINK OF THE DAY  
Paradise Punch (Alcoholic)  
Espresso Chiller (Non-Alcoholic)

Fold along the dotted lines and take me with you so you don't miss any of the fun!

FOLD

YOUTH ACTIVITIES OPEN HOUSE  
A non-sectarian program with activities for families, adults and children to enjoy together.





# Be our Guest!

WELCOME ABOARD SHOW

Featuring



The Physical Comedy of  
**Jeff Civillico**



The Magic, Balloons  
& Comedy  
**John Cassidy**

## WALT DISNEY THEATRE

Deck 4, Forward  
6:15 pm & 8:30 pm

As a courtesy to all Guests, we kindly advise that the saving of  
seats is not permitted in the Walt Disney Theatre.

Assistance is available at the entrance to the Walt Disney Theatre 30 minutes prior to show time.

## Character Meet & Greet Ticket Distribution

Port Adventures Desk, Deck 3, Midship - 12:00 pm - 2:00 pm

For Guests who did not reserve meet and greets online, a limited number of tickets are available today to meet some of your favorite Disney friends.

Princess Gathering ~ Frozen Meet and Greet

Disney Jr. Character Breakfast

Tickets are required for each of these meet and greets.  
Space is limited.

## Character Appearances

### ADVENTURES AWAY

Deck 9 Stage - 4:30 pm

### PLUTO

Lobby Atrium (P) - 5:15 pm  
DK4 Mid (S)  
7:30 pm & 9:30 pm

### MICKEY MOUSE

Lobby Atrium (P)  
5:45 pm & 8:00 pm

### MINNIE MOUSE

Lobby Atrium (P)  
7:30 pm & 9:30 pm

### GOOFY

DK4 Mid (S)  
8:00 pm & 10:00 pm

### DONALD DUCK

Lobby Atrium (P)  
10:00 pm



(S) Starboard Side - (P) Port Side

For details of daily Disney character appearances, refer to the character line on your Navigator Grid, or the digital character board in the Lobby Atrium.  
Lines close 15 minutes after advertised start time.

## SHIP DIRECTORY

### YOUTH ACTIVITIES

DISNEY'S OCEANEER CLUB	DECK 5, MID	12:00 PM - 3:30 PM 4:30 PM - 12:00 AM
DISNEY'S OCEANEER LAB	DECK 5, MID	12:00 PM - 3:30 PM 4:30 PM - 12:00 AM
EDGE	DECK 9, MID	12:00 PM - 3:30 PM 4:30 PM - 12:00 AM
IT'S A SMALL WORLD NURSERY	DECK 5, AFT	12:30 PM - 3:30 PM 5:30 PM - 11:00 PM
VIBE	DECK 10, MID	12:00 PM - 3:30 PM 4:30 PM - 12:00 AM

### POOLS

Children under 12 years of age must have adult supervision in all pools.

AQUALAB	DECK 9, AFT	12:00 PM - 3:30 PM 4:30 PM - 6:00 PM
DORY'S REEF	DECK 9, AFT	12:00 PM - 3:30 PM 4:30 PM - 6:00 PM
GOOFY'S POOL	DECK 9, MID	12:00 PM - 3:30 PM 6:00 PM - 10:00 PM
QUIET COVE POOL (18+)	DECK 9, FWD	12:00 PM - 3:30 PM 4:30 PM - 11:00 PM
TWIST N' SPOUT	DECK 9, AFT	12:00 PM - 3:00 PM 4:30 PM - 6:00 PM

Please note, "selfie sticks" are not permitted in any aquatic area.  
Complimentary pool vests are available for children to use in the pools onboard.  
They are located on the pool deck.

### RECREATION

CHILL SPA	DECK 9, FWD	12:00 PM - 10:00 PM
PORT ADVENTURES DESK	DECK 3, MID	12:00 PM - 3:30 PM 4:30 PM - 10:00 PM
SENSES FITNESS CENTER (18+)	DECK 9, FWD	12:00 PM - 10:00 PM
WIDE WORLD OF SPORTS DECK	DECK 10, FWD	12:00 PM - 3:30 PM 4:30 PM - 12:00 AM

### GENERAL INFORMATION

BUENA VISTA THEATRE	DECK 5, AFT	SHOWTIMES
CONNECT@SEA DESK	DECK 3, AFT	1:00 PM - 4:00 PM 7:00 PM - 10:00 PM
DISNEY VACATION CLUB DESK	DECK 4, MID	5:00 PM - 10:00 PM
DISNEY VACATION PLANNING DESK	DECK 4, MID	7:00 PM - 8:30 PM
FUNNEL VISION	DECK 9, MID	SHOWTIMES
GUEST SERVICES	DECK 3, MID	24 HOURS
HAIR BRAIDING	DECK 9, MID	4:30 PM - 6:30 PM
MEDICAL HEALTH CENTER	DECK 1, FWD	4:30 PM - 7:00 PM
PORT SHOPPING DESK	DECK 3, MID	7:00 PM - 8:30 PM
PRELUDES	DECK 4, FWD	5:30 PM - 9:30 PM
SENSES SPA AND SALON	DECK 9, FWD	12:00 PM - 10:00 PM
SHUTTERS PHOTO GALLERY	DECK 4, AFT	6:00 PM - 10:00 PM
WALT DISNEY THEATRE	DECK 4, FWD	SHOWTIMES

### SHOPPING

ART GALLERY	DECK 4, MID	8:00 PM - 9:00 PM
BIBBIDI BOBBIDI BOUTIQUE	DECK 10, FWD	12:00 PM - 3:00 PM 5:00 PM - 9:00 PM
MICKEY'S MAINSAIL	DECK 4, FWD	6:00 PM - 11:00 PM
QUACKS	DECK 9, MID	
SEA TREASURES	DECK 3, FWD	6:30 PM - 10:00 PM
WHITE CAPS	DECK 4, FWD	6:00 PM - 11:00 PM

**EVENING ATTIRE** Cruise Casual

**WEATHER** Today: Partly Cloudy  
FORECAST High: 74°F/23°C

## DINING & LOUNGES

### LUNCH

CABANAS	DECK 9, AFT	12:00 PM - 3:00 PM
DAISY'S DE LITES	DECK 9, AFT	12:00 PM - 3:30 PM
PINOCCHIO'S PIZZERIA	DECK 9, MID	12:00 PM - 3:30 PM
PETE'S BOILER BITES	DECK 9, AFT	12:00 PM - 3:30 PM
TRITON'S (A-LA CARTE)	DECK 3, MID	11:45 AM - 1:30 PM

### DINNER

ANIMATOR'S PALATE	DECK 4, AFT	5:45 PM & 8:15 PM
DAISY'S DE LITES	DECK 9, AFT	4:30 PM - 6:00 PM
PALO (18+)	DECK 10, AFT	6:00 PM - 8:30 PM
PETE'S BOILER BITES	DECK 9, AFT	4:30 PM - 9:30 PM
PINOCCHIO'S PIZZERIA	DECK 9, MID	4:30 PM - 6:00 PM
TIANA'S PLACE	DECK 3, AFT	5:45 PM & 8:15 PM
TRITON'S	DECK 3, MID	5:45 PM & 8:15 PM

### LATE NIGHT SNACKS

CROWN & FIN PUB (18+ AFTER 9:00 PM)	DECK 3, FWD	10:45 PM - 11:45 PM
PINOCCHIO'S PIZZERIA	DECK 9, MID	9:30 PM - 12:00 AM
PROMENADE LOUNGE	DECK 3, AFT	10:45 PM - 11:45 PM

### ADDED FEATURES

BEVERAGE STATION	DECK 9, AFT, PORT SIDE	24 HOURS
EYE SCREAM	DECK 9, MID	12:00 PM - 3:30 PM 4:30 PM - 11:00 PM
ROOM SERVICE	DIAL 4330	OPENS AT 1:30 PM

### ENTERTAINMENT - LOUNGES - BARS

Adults must be 21 and older to consume alcoholic beverages.

AZURE (18+ AFTER 9:00 PM)	DECK 3, FWD	7:30 PM - 2:00 AM
CADILLAC LOUNGE (18+)	DECK 3, FWD	6:00 PM - 12:00 AM
COVE CAFE (18+)	DECK 9, MID	11:45 AM - 12:00 AM
CROWN & FIN PUB (18+ AFTER 9:00 PM)	DECK 3, FWD	11:45 AM - 12:00 AM
D LOUNGE	DECK 4, MID	SHOWTIMES
PINOCCHIO'S PIZZERIA	DECK 9, MID	11:45 AM - 12:00 AM
PRELUDES	DECK 4, FWD	5:30 PM - 9:30 PM
PROMENADE LOUNGE	DECK 3, AFT	11:45 AM - 12:00 AM
SIGNALS (18+)	DECK 9, FWD	11:45 AM - 10:30 PM
SULLEY'S SIPS	DECK 9, MID	11:45 AM - 6:00 PM

Public Health Advisory: Consuming raw or under-cooked meats, poultry, seafood, shellfish, or eggs may increase your risk for food borne illness, especially if you have certain medical conditions.

Disney CRUISE LINE.

# PORT ADVENTURES

Explore and more with our carefully selected Port Adventures. Visit the Port Adventures Desk, Deck 3, Midship to find out more.

## IMPORTANT NUMBERS

Fire/Security: 7-3001  
Medical EMERGENCY: 7-3000  
Health Center: 7-1927