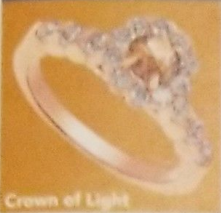


# PORT SHOPPING INFORMATION



Crown of Light



Hublot



Kabana



Breitling



Korite



TAG Heuer



Safi Kilima

## ST. MAARTEN

### SHOPPING EVENTS ASHORE

Meet Your Port Shopping Guide and ask for your VIP shopping cards.

STORE#

1  
ab

#### DIAMONDS INTERNATIONAL SHOPPING PARTY

Shop with your Port Shopping Guide at specific times given on the Port Shopping Channel on your stateroom TV for spectacular savings, live raffles and gifts with purchase.

4  
abc

#### EFFY JEWELRY DIVERSA JEWELRY GIVEAWAY

Try on the most exciting earrings in the Caribbean and enter to WIN a DiVersa pendant!

10a

#### MAJESTY JEWELERS

Shop like royalty with complimentary beverages

#### SHOPPING INFO ASHORE

Watch  
Channel

9

Tune in for the latest shoreside shopping information from your stateroom television.

### TAKE ASHORE

- ☐ This Map
- ☐ FREE Diamond Charm Bracelet Card
- ☐ Photo ID & Key to the World Card
- ☐ VIP Cards
- ☐ Cash and Credit Cards
- ☐ Sunscreen & Sunglasses

### AT A GLANCE

**Location:** 144 miles east of Puerto Rico

**Taxi:** Agree upon fare before departing

**Currency:** US Dollar

**Language:** French, Dutch and English

**Population:** 69,000

### DOWNTOWN SHOPPING

Take a short water taxi ride to Wathey Square for Downtown shopping. See map inside for recommended and guaranteed shops.

### DOCKING/ANCHORAGE

The ship docks at the new A.C. Wathey Pier in Philipsburg.

### IN CASE OF EMERGENCY

**Port Agent:** S.E.L. Maduro

**Address:** Grove Dove Road #5, Point Blanche, P.O. Box 63, Philipsburg

**Agent:** Roullion Sorton

**Phone:** 7215423408

**Cell:** 7215886400

**Email:** rsorton@maduro-sxm.com

### GREAT BUYS!

Great Quality, Great Selection & Great Price!

Crown of Light	Breitling	Korite	Hublot
Philip Stein	Safi Kilima	Bvlgari	EFFY
Kabana	Zenith	Mark Henry	TAG Heuer

### PORT OVERVIEW

The divided status of St. Martin/St. Maarten is a result of the colonial tug-of-war between European powers in the Caribbean. The island was inhabited well before Europeans arrived. An archaeological dig in St. Martin has unearthed tools and pottery from Amerindian settlers that have been dated to 550 BC. The fierce and cannibalistic Caribs had taken over the island when Columbus landed on it in 1493. As a result, the Spanish never developed the island after claiming it. Dutch settlers arrived in the early 1600s. Thereafter, every colonial power active in the Americas owned a piece of the island at one point or another. Legend has it that a Frenchman and a Dutchman finally settled an argument over territorial rights by pacing off their shares.

Of the 37 square miles/ 96 square kilometers, the French got the bigger slice, but the Dutch got the most valuable real estate: the Salt Pond and the harbor. The international airport is also on the Dutch side. The 1648 Treaty of Concordia marked the formal division of land. The Dutch part of the island is administered from Curaçao as is the rest of the Netherlands Antilles, while the French part is administered from Guadeloupe.







Past Present

FUTURE

CROWN OF LIGHT

DY DIAMONDS INTERNATIONAL

SAFI KILIMA  
TANZANITE

Exclusively sold at Diamonds International  
SafKilima.com

**EFFY**  
NEW YORK EST. 1978

Multi-color Sapphire and Diamond Pendant set in 14K Gold

Signature Diamond and Emerald Panther Ring set in 14K White Gold

EFFYJEWELRY.COM | 1.877.ASK.EFFY

DEL SOL  
COLOR CHANGE

NOT YOUR AVERAGE SHIRT

Without Sun

With Sun

SEE IT CHANGE COLOR IN THE SUN.

**CARILoha**  
NATURAL LUXURY

**INDULGE IN NATURAL LUXURY**

Enjoy Cariloha's Softest Bedding on the Planet™,  
Made of Viscose from Bamboo!

## Safety Ashore Information

While you will find many great experiences ashore, please remain vigilant about your personal safety and the safety of your belongings. As in any large urban tourist destination, you'll want to take some basic precautions to make the most of your time ashore.

- Be aware of your surroundings at all times. Avoid short cuts, narrow alleys and poorly lit streets.
- Avoid wandering from the main shopping and tourist areas into unfamiliar territory. If venturing out independently, have a plan, use only licensed taxi operators.
- Identity/Credit Card theft can occur anywhere. Please remain vigilant in monitoring the safe keeping of your personal information.
- Leave valuables in your room safe and avoid carrying large amounts of cash. Exercise caution when using ATMs. Cameras and handbags should be carried close to your body or concealed out of sight.
- Leave air transportation tickets and other travel documents in your room safe. When going ashore, each adult is required to carry a Driver's license, passport or other government-issued photo ID. – Note: Some ports may require Guests to carry passports ashore.
- Most crimes are easier to commit in dark unlit areas. When going ashore at night, please be extra vigilant about your personal safety.

## Buyer's Guarantee

Shop with confidence at each of the recommended stores. All stores listed on the map have paid a promotional fee and given Disney Cruise Line Guests a Buyer's Guarantee valid for 60 days after purchase. This guarantee is valid for repair or exchange. Please note the following conditions that apply to the retail jeweler will be considered. Price paid for merchandise or verbal claims or agreements between merchant and Guest will not be grounds for returns. Electronics and watches requiring service must be returned by the consumer to the respective manufacturer. All purchases, including fragile items, must be checked before leaving the store. Do not mail merchandise without prior authorization. Guests are responsible for postage and appraisal costs. PPI Group, 6261 NW 6th Way, Suite 100, Fort Lauderdale, FL 33309, Customer Service: 1.888.774.4768 or 954.377.7777 email: Service@ppigroup.com