

# VOYAGE NAVIGATOR

SATURDAY  
MARCH 24, 2018

TO

SATURDAY  
MARCH 31, 2018

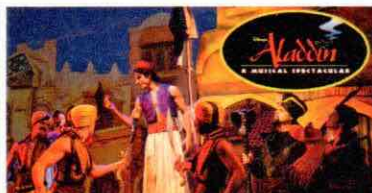
## CRUISE HIGHLIGHTS

**SATURDAY**  
PORT CANAVERAL  
Port Departure: 5:00 pm  
All Aboard: 3:45 pm  
Attire: Cruise Casual



**A FANTASY COME TRUE: WELCOME SHOW**  
Walt Disney Theatre  
6:15 pm & 8:30 pm

**SUNDAY**  
DAY AT SEA  
Attire: Formal



**DISNEY'S ALADDIN**  
Walt Disney Theatre  
6:15 pm & 8:30 pm

**MONDAY**  
DAY AT SEA  
Attire: Cruise Casual



**DISNEY WISHES**  
Walt Disney Theatre  
6:15 pm & 8:30 pm

**TUESDAY**  
PHILIPSBURG  
All Ashore: 8:30 am  
All Aboard: 6:00 pm  
Attire: Pirate or Cruise Casual



**SHOWTIME: SHAWN FARQUHAR**  
Walt Disney Theatre  
6:15 pm & 8:30 pm

**WEDNESDAY**  
ST. THOMAS  
All Ashore: 7:45 am  
All Aboard: 4:00 pm  
Attire: Cruise Casual



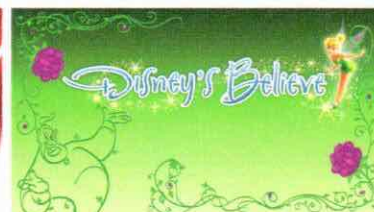
**SHOWTIME: MAX WINFREY**  
Walt Disney Theatre  
6:15 pm & 8:30 pm

**THURSDAY**  
STAR WARS DAY AT SEA  
Attire: Star Wars or Cruise Casual



**STAR WARS: THE LAST JEDI (PG-13)**  
Walt Disney Theatre  
4:30 pm & 7:30 pm

**FRIDAY**  
DISNEY CASTAWAY CAY  
All Ashore: 10:00 am  
All Aboard: 4:45 pm  
Attire: Cruise Casual



**DISNEY'S BELIEVE**  
Walt Disney Theatre  
6:15 pm & 8:30 pm

Subject to change.

## WELCOME ABOARD!

### YOUR STATEROOM & LUGGAGE

Staterooms will be ready at 1:30 pm. To allow your Stateroom Host/ess time to prepare your room, please do not remove the blue stanchion straps. Stateroom hosts will deliver luggage throughout the day until 5:30 pm.

### STATEROOMS WITH BUNK BEDS

Bunk beds are recessed into the ceiling and will be prepared during evening turndown service by your Stateroom Host/ess.

### STATEROOM SAFE

Each stateroom is equipped with a secured storage safe. Instructions for use are located on the safe.

### TO CHANGE DINING ASSIGNMENT

Requests for different seating times will be taken today:

12:30 pm - 3:00 pm; Book in Animator's Palate, Deck 3, Midship  
3:15 pm - 5:00 pm; please dial 7-1831, 7-1832, or 7-1833

### REMY & PALO DINING RESERVATIONS

Reservations are required and will be taken on a first come basis today:

12:30 pm - 3:00 pm Animator's Palate, Palo & Remy  
3:15 - 5:00 pm Please leave a voice mail at 7-9735 for Palo or 7-9734 for Remy.

Please dial 7-9734 for Remy or 7-9735 for Palo for more information. Cover charge applicable.

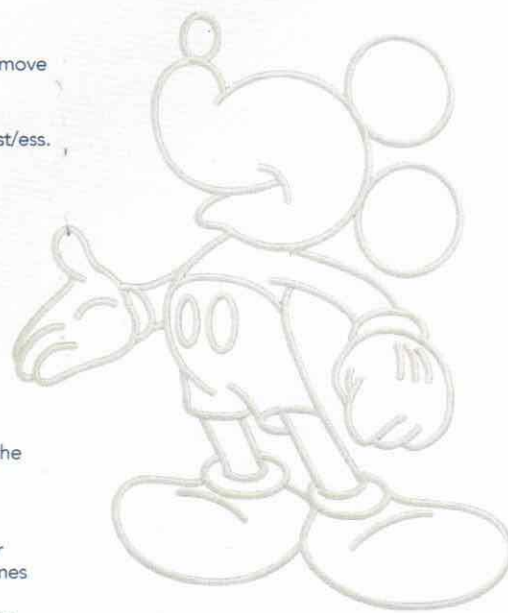
Adult Exclusive Dining Opportunity! Guests are invited to make 2 dinner reservations at our two adult-exclusive restaurants, Palo & Remy. This includes one reservation on embarkation evening and one more on another night of the cruise. Reservations are subject to availability and a specialty dining charge will apply.

### DINNER

5:45 pm - First seating 8:15 pm - Second seating

Please check your Key To The World Card or dining tickets for details of your dining rotation, and bring them to your specific dining location. There is no need to wait in line prior to dinner. Dining Rooms open at designated seating times and your table is reserved each night of your cruise.

A = Animator's Palate, Deck 3, Aft E = Enchanted Garden, Deck 2, Midship R = Royal Court, Deck 3, Midship



Disney Cruise Line  
**PORT ADVENTURES**

Create the most memorable experiences during your Disney Cruise Line vacation with Port Adventures! Our Port Adventures are designed for you to see the best of our ports have to offer. Stop by the Port Adventures Desk, Deck 5, Midship where our friendly team will be happy to assist you plan your adventure!

There is an adventure for everyone on your Disney Fantasy® vacation.

**IMPORTANT NUMBERS**

Fire/Security: 7-3001

Medical Emergency: 7-3000

Health Center: 7-1927



## ADULT ACTIVITY HIGHLIGHTS



### 1820 SOCIETY (GUESTS 18-20 YEARS ONLY)

1820 Society is an exclusive option for young adult guests. Come meet fellow guests and learn about the excellent activities that the Fantasy offers to create the perfect cruise experience.



### 80'S MUSIC CHALLENGE

"Moon Walk" back to the 80's as we put your musical knowledge of the decade to the test.

### ART OF THE THEME SHOW SHIP TOUR

Join us for a guided tour highlighting the design, Imagineering and artistry of the ship. This tour is reserved for Guests 18 and over.

### CRUISIN' SOLO GATHERING

Single, single parent or just traveling alone? Join your Cruise Staff for an informal gathering.



### MATCH YOUR MATE

It's time to play everyone's favorite couples game show, Match Your Mate!



Senses Spa & Salon has a variety of seminars and fitness classes available throughout the cruise. Pamper yourself with therapeutic spa treatments of heat, steam, rain and water in luxurious and tranquil private rooms. Deck 11, Forward.

### BEVERAGE SEMINARS

Your Beverage team has a host of tastings and seminars to entertain and educate you. Stop by La Piazza, Deck 4, Aft to pre-book these experiences (nominal fee applies).

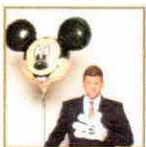
Mixology - Stem to Stern Wine Tasting - Martini Tasting - Champagne Tasting - Beer Tasting - Cognac Tasting - Whisky Tasting - Amari Tasting - Tequila & Margarita Tasting - Chocolate & Liquor Tasting - Rum Tasting

## FEATURED VARIETY ACT THIS VOYAGE



### THE MAGIC & ILLUSION OF SHAWN FARQUHAR

Shawn offers a fast paced, audience participation experience that will draw everyone into an evening of entertainment you will not soon forget. As a two-time world champion of magic, Shawn knows the right blend of magic and comedy to make your guests have fun. After all...it's his job!



### THE COMEDY & HYPNOSIS OF DALE K

Hollywood's fabricated theory of hypnosis usually involves lightning bolts, zombie like trances and humans clucking like chickens. During his performances, Dale challenges these theories proving that hypnosis is simply the power of suggestion that consists of mind motivation rather than mind control. Using his creative abilities and abstract sense of humor, Dale K produces hypnosis events that are professional, unconventional and always hilarious.



### THE PHYSICAL COMEDY OF MAX WINFREY

"Fasten your seat belts and get ready for the outrageous Physical Comedy of Max Winfrey. His unique style of combining stunts and improvisational comedy has landed him numerous appearances on national television-- most recently as a semi-finalist on America's Got Talent. Earlier this year, Max shattered the Guinness World Record for endurance juggling with full sized axes. Young and old alike will enjoy this unpredictable show that is filled with crazy audience participation. See you there!"



### THE STAND UP COMEDY OF MARYELLEN HOOPER

A physical, story-teller, Maryellen's act is an ever-evolving story about her life as a woman, wife and mother. Never crude or offensive, her accounts of life's little annoyances leave audiences exhausted from laughter. From home repairs on her family's "Fixer Upper" to colicky babies, no story is too sacred to share with her audiences.

## CLUB DJ THIS VOYAGE



### CLUB DJ DOUBLE II

Providing you with the nightclub experience is Orlando favorite and nightclub superstar DJ Double ii. DJ Double ii has performed with everyone from Sean Paul live to Sean John fashion shows. Disney Fantasy, get ready for a dance experience like no other. Get ready for DJ Double ii.

## FUN FOR ALL AGES HIGHLIGHTS



### ANYONE CAN COOK

Every Chef has a specialty, and ours is no exception. Get a taste of perfection with each day's recipe.



### A PIRATES LIFE FOR ME

Calling all Pirates, we be! If ye have an adventurous spirit or pirate savvy, come spin the "Wheel of Destiny" fer a treasure trove of fun be ripe for the takin' in this action packed pirate game show.



### BUCCANEER BLAST FIREWORKS

What's a pirate party without some fireworks to remind the other ships who be ruling the oceans blue?



### CASTAWAY CAY 5K (10+)

Sign up today for the Castaway Cay 5K! Please visit the Port Adventures Desk or the Guest Services Desk to register at anytime prior to our arrival at Disney Castaway Cay. Please note that runners must be 10 years of age or older to participate.



### DISNEY JUNIOR PIRATE & PRINCESS DANCE PARTY

Calling all Pirates and Princesses! Come join us for a family dance party featuring music and fun activities from Jake & the Neverland Pirates and Sofia the First. Whether you favor tiaras or treasure chests, there's something for you at our Disney Junior Pirate & Princess Dance Party!



### DISNEY VACATION CLUB GROUP PREVIEW

Want to learn more about taking magical vacations year after year? Please see a Disney Vacation Club Cast Member on Deck 4, Midship, or call 7-2805 from your stateroom phone for more information about our interactive group presentation.



### FAMILY FUSION

Bring the entire family and test your Disney knowledge in the high-tech interactive game show, Family Fusion.



### FAMILY TALENT SHOW

Let your family take center stage and strut their stuff. Everyone has a talent, it's time to show off yours! Pre-register at Guest Services.



### JACK-JACK'S INCREDIBLE DIAPER DASH

Calling all baby cruisers! It's time to take to the mat to see who's the fastest crawler of the seven seas! Register your baby 15 minutes prior to the big race.



### JACKPOT BINGO

CASH prizes and raffle prizes to be won in our family friendly Bingo sessions with your Cruise Staff. Those under the age of 18 must be accompanied by an adult to play.



### JAKE THE NEVERLAND PIRATE

A'Hoy there mates, join us for an adventure in D Lounge with Jake and the Neverland Pirates.



### MICKEY 200

Don't eat your vegetables... race them in this wild and wacky charge to the finish line. May the best veggie win! (Limited Availability)



### MICKEY'S PIRATES IN THE CARIBBEAN

It's a Pirate Celebration, me hearties! Come experience all the pirate fun alongside Captain Mickey Mouse and his famous pirate crew. Play, dance and acquire all the pirate skills needed to become an official member of Mickey's Pirate Crew! (Weather Permitting)



### MIRROR MIRROR

Join the Magic Mirror in the fairest game show of them all, Mirror, Mirror. There's trivia, singing and even a relay race. Hi Ho, Hi Ho, it's off to play we go!



### SALUDOS AMIGOS FIESTA

Come see what Donald and his friends are up to this time. Bring the family out to this interactive dance party featuring fun Latin music! Your family will learn to salsa, merengue and just have a Latin good time!



### SEA YA REAL SOON

Mickey and Minnie along with the rest of the Walt Disney Characters invite you to join them in the ship's atrium for Sea Ya Real Soon. You won't want to miss this very special farewell presentation.



# YOUTH ACTIVITIES INFO & HIGHLIGHTS



## Dine & Play

A convenience for families, during your dinner, our Youth Activities counselors will be available at 6:45 pm or 9:15 pm at the entrance of Royal Court and Enchanted Garden and at 7:00 pm or 9:30 pm at the Animator's Palate dining room to bring registered children to join the fun in the Youth Activities areas.

## Pre-School Fun

Disney's Oceaneer Club is reserved for only those between 3-5 years of age. This is a time for them to become acclimated to Disney's Oceaneer Club, make new friends and join in on a lot of fun-filled programs and activities. Please note after Pre-School Fun has concluded, Disney's Oceaneer Club will be open for Secured Programming for ages 3-12.

## Youth Activities Open House

Open House is an opportunity for all to come and participate in a variety of exciting activities and free time in the Oceaneer Club, Oceaneer Lab, Edge and Vibe throughout the cruise. During these times secured programming will still be offered in the other venue for those looking to check their children into care.



3 - 12 years old

## DOCTOR STRANGE

Unravel the mysteries of the Mystic Arts from none other than Doctor Strange.

## DOC MCSTUFFIN'S TOY HOSPITAL

Help Doc McStuffins diagnose and fix broken toys as you become a Jr. Toy Doctor at McStuffinsville Toy Hospital.

## FORCE TRAINING

Learn the ways of the Force and take on the First Order.

## JOIN THE LION GUARD

Harness your inner animal and find out if you have what it takes to join the Lion Guard!



3 - 12 years old

## PLUTO'S PAJAMA PARTY

Bring the little ones in their pajamas but there will be anything but sleep when Pluto and friends host the ultimate slumber party!

## GET THE HOOK

A villainous villain has stolen Captain Hook's prized golden hook. Become a member of the Top Deck Detective Agency and help solve the clues to retrieve Hook's hook.

## PISTON CUP

It's Dinoco time and you're part of the pit crew! Design your own race car and see if you've got what it takes to end up in the winner's circle!

## ALOHA LUAU

Come join us for a Luau experience and learn how to dance like Lilo & Stitch.



11 - 14 years old

## BRAINS AND BRAWNS

You will compete against each other to solve clues, take part in physical challenges, and reach the finish first.

## A PIRATE'S LIFE FOR ME

Calling all Pirates, we be! If ye have an adventurous spirit or pirate savvy, come spin the "Wheel of Destiny" for a treasure trove of fun be ripe for the takin' in this action packed pirate game show.



14 - 17 years old

## THAT'S HILARIOUS

Ever wanted to show off your comedy skills? Then be a part of the cast for the crazy improv show "That's Hilarious" and put on a live show for your friends.

## DIVE INTO DJ'ING

Hop on the turn tables and learn to scratch with our Guest DJ.

# BUENA VISTA THEATRE

Deck 4 & 5, Midship

## FEATURE MOVIES THIS VOYAGE

### SATURDAY - PORT CANAVERAL

5:00 pm	PG	A Wrinkle in Time
7:30 pm	PG	A Wrinkle in Time
9:45 pm	PG	Star Wars: Episode I. The Phantom Menace

### SUNDAY - DAY AT SEA

8:30 am	PG	Family Movie Fun Time: Coco
12:45 pm	G	Born in China
2:30 pm	PG	Star Wars: Episode II. Attack of the Clones
5:15 pm	PG-13	Black Panther
8:00 pm	PG-13	Black Panther
10:45 pm	PG-13	Star Wars: Episode III. Revenge of the Sith

### MONDAY - DAY AT SEA

9:30 am	PG	Star Wars: Episode IV. A New Hope	cc Open Captioning
12:00 pm	PG-13	Black Panther	
2:45 pm	PG	Star Wars: Episode V. The Empire Strikes Back	3D
5:15 pm	PG-13	Thor: Ragnarok	
8:00 pm	PG-13	Thor: Ragnarok	
10:30 pm	PG-13	Black Panther	

### TUESDAY - PHILIPSBURG

11:30 am	PG	A Wrinkle in Time	3D
2:00 pm	PG-13	Thor: Ragnarok	
5:15 pm	PG-13	Pirates of the Caribbean: Dead Men Tell No Tales	3D
8:00 pm	PG-13	Pirates of the Caribbean: Dead Men Tell No Tales	
11:00 pm	PG-13	Pirates of the Caribbean: Dead Men Tell No Tales	

### WEDNESDAY - ST. THOMAS

9:30 am	PG	A Wrinkle in Time	cc Open Captioning
11:45 am	PG	Star Wars: Episode VI. Return of the Jedi	
2:30 pm	PG-13	Pirates of the Caribbean: Dead Men Tell No Tales	3D
5:00 pm	PG	Coco	
8:30 pm	PG	Coco	
10:45 pm	PG-13	Star Wars: The Force Awakens	

### THURSDAY - STAR WARS DAY AT SEA

2:15 pm	PG-13	Star Wars: The Last Jedi	3D
5:15 pm	PG-13	Star Wars: The Last Jedi	
8:30 pm	PG-13	Star Wars: The Last Jedi	
11:30 pm	PG-13	Star Wars: The Last Jedi	

### FRIDAY - DISNEY CASTAWAY CAY

8:30 am	PG	Family Movie Fun Time: Coco	cc Open Captioning
11:00 am	PG-13	Star Wars: The Last Jedi	
2:00 pm	PG	A Wrinkle in Time	3D
5:00 pm	PG-13	Black Panther	
7:45 pm	PG-13	Black Panther	
10:15 pm	PG-13	Rogue One: A Star Wars Story	

### SATURDAY - PORT CANAVERAL

Subject to change.



# MORE TO ENJOY ONBOARD



## NEW SUMMER 2019 ITINERARIES

New Summer 2019 Itineraries announced! Be among the first to experience special sailings in Europe, Alaska, the Caribbean, and the Bahamas with your family! Visit Disney Vacation Planning, Deck 4, Midship for more information. Disney Vacation Planning tends to get busy on the last day of sailing. Don't miss the opportunity to plan your next Disney vacation.

## DISNEY VACATION CLUB® MEMBERS PREVIEW

Join us as we welcome you onboard with a fun, interactive event where you can catch the latest updates at Disney Vacation Club! Please see a Disney Vacation Club Cast Member on Deck 4, Midship or call 7-2805 from your stateroom phone for more information.

## PORT SHOPPING INFORMATION

Meet Oxy & Archie, your Port Shopping Guides at the Port Shopping Desk, Deck 4, Midship between 7:30 pm - 8:30 pm. Tonight, collect your FREE cruise ship anchor charm and receive a bonus raffle ticket for tomorrow's Port Shopping Talk in the Buena Vista Theatre. Tune into channel 9 and don't miss tomorrow's event covering St. Maarten & St. Thomas. Buena Vista Theatre, Deck 4, Midship at 11:15 am.



## Connect@Sea

### FREE INTERNET EMBARKATION DAY SPECIAL

Sign up for a free 50 MB Internet package today and enjoy it throughout the cruise! This offer is only available from noon to midnight on the day your cruise begins. On your wireless device, simply find the "DCL-Guest" Wi-Fi Network, go to [www.dclguest.com](http://www.dclguest.com) to create an account, and get your free 50 MB of data to start sharing your memories even before you leave port! If you have any questions, ask our Connect@Sea Expert located at Deck 4, Midship. No purchase necessary. The free 50 MB package can only be used for the duration of the cruise. Only one free package per stateroom, but everyone can share it. Unused data from a package will not be reimbursed and it is non-transferable between voyages or ships.

### RELIGIOUS SERVICES

Groups who need a location to practice their faith may contact Guest Services for availability information.

## SENSES SPA & SALON



DECK 11, FORWARD  
Extension 7-1465

### RAINFOREST

Come enjoy our serenity lounge, with heated chairs, dry sauna, aromatherapy steam rooms and rainfall, misting showers.  
\$193 for couples and \$144 for singles.

### COOLSCULPTING

Fear No Mirror with CoolSculpting. The premier non-invasive fat reduction and body contouring treatment. Eliminate fat and sculpt your body with a single treatment. Complimentary Consultations available now in the Rejuvenation Spa at Senses Spa & Salon.

### ONBOARD ACUPUNCTURE

Naturally effective for pain, arthritis, sea sickness, stress, digestion, weight loss, and much more.  
\$150/session or \$550/5 sessions.

### TRIPLE YOUR INDULGENCE

We recommend you enrich your day spa experience by choosing three of your favorite signature treatments and receive:  
10% off your 1st signature treatment  
20% off your 2nd signature treatment  
30% off your 3rd signature treatment

## MERCHANDISE SHOPPING



DECK 3, FORWARD

### SOPHIA FIORI DIAMOND TRUNK SHOW

Sophia Fiori is known for their exceptional and high quality colored diamonds. Your Sophia Fiori Jewelry Stylist and diamond industry expert has brought onboard over \$1 Million in Diamonds and Tanzanite jewelry at all price points from \$500 up to extravagant connoisseur pieces. White Caps, Deck 3, Forward.

### TIFFANY & CO. GRAND UNVEILING

Be a part of history as Tiffany & Co. unveils their very first Disney Cruise Line inspired jewelry! Visit Tiffany & Co. for details on how you can own a piece of this iconic moment.

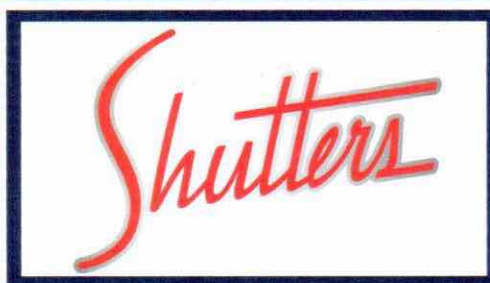
### STAR WARS DAY AT SEA MERCHANDISE

From graphic tees to drinkware, celebrate this stellar sailing with the various commemorative merchandise items available in Sea Treasures, Deck 3, Forward, which the whole family love!

### BIBBIDI BOBBIDI BOUTIQUE

A makeover fit for a princess! Fairy Godmothers-in-Training are ready with magic and pixie dust to give your Prince and Princess the transformation of a lifetime. Make your reservations by visiting Bibbidi Bobbidi Boutique, Deck 5, Midship or dialing extension 7-9438. Limited space available.

## SHUTTERS PHOTO GALLERY



DECK 4, MIDSHIP

### FAMILY PORTRAITS

Photos are taken in the lobby atrium to capture all your vacation memories. Make use of these opportunities to take a beautiful family photo by our Professional photographers and remember your cruise forever.

### PHOTO BOOK

Turn your magical vacation memories into an impressive keepsake, a personal one of a kind Photo Book. Fill every page with memories of your cruise vacation. Orders close at 9:00 pm on the last day of the cruise.

### PRIVATE STUDIO PORTRAITURE

Book our exclusive and contemporary Private Studio experience today and capture these memories. No obligation to purchase.

**PHOTOS ARE AVAILABLE FOR VIEWING ON OUR INTERACTIVE PHOTO KIOSKS APPROXIMATELY FIVE HOURS AFTER BEING TAKEN AND ARE ONLY AVAILABLE FOR PURCHASE DURING THIS CRUISE.**

**AN 18% AUTO GRATUITY IS ADDED TO ALL SENSES SPA SERVICES.**

**DUE TO PORT REGULATIONS, WHEN THE SHIP IS DOCKED, THE STORES WILL REMAIN CLOSED.**

## IMPORTANT INFORMATION

### Security Notice

All Guests (including children) who wish to disembark the ship are required to present their Key to the World card at the gangway. A photo ID is also required for those Guests who are 18 years of age or older. Guests under the age of 18 are required to have a parent, guardian or other responsible adult sign an authorization form at the Guest Service Desk if they wish to go ashore unaccompanied or with any adult from another stateroom.

### Inclement Weather

For the safety of all Guests, outdoor events may be changed due to unforeseen weather conditions.

### Insect Repellent Advisory

The Centers for Disease Control and Prevention recommends wearing long-sleeved shirts and pants along with insect repellent to protect against mosquito bites and related illnesses when going ashore. Complimentary insect repellent is available on the pier as you exit the ship. Insect repellent is also available for purchase in Sea Treasures. When using both sunscreen and insect repellent, use sunscreen first and apply insect repellent on top of sunscreen.

### Corridor Quiet Hours

As a courtesy to all our Guests, please recognize quiet hallway hours from 10:00 pm til 8:00 am.

### Environmental Message

With Disney's commitment to the Environment, please refrain from throwing anything over the Ship's side. Thank you!

### No Reserved Seats Policy

As a courtesy to all our Guests, we kindly advise that the saving of seats is not permitted in the Walt Disney Theatre, and the saving of the sun loungers is not permitted on Deck 11, 12, and 13. Items left unattended will be returned to lost and found at Guest Services, Deck 3 Midship. **Cold and Flu Reminder**  
Please wash hands frequently and thoroughly; particularly before meals. Contact the Health Center by dialing 7-1927, should anyone in your party become ill.

### Smoking

For the comfort of our Guests, the following areas are designated as smoking areas:

\*Deck 13, forward, port side by Currents  
\*Deck 12, aft, port side outdoor area that is accessible through the Meridian Lounge

\*Deck 4, aft, port side from 6:00 pm to 6:00 am only (all of Deck 4 is non-smoking from 6:00 am to 6:00 pm)  
Smoking is prohibited inside all Guest staterooms and on stateroom verandahs. Guests found smoking in their staterooms or on their verandahs will be charged a \$250 stateroom recovery fee. Electronic cigarettes may only be used in designated smoking areas.

### Walt Disney Theatre

Theatrical performances may use artificial fog, strobe lights, pyrotechnics and other special effects. For the safety of our performers and the comfort of those around you, the use of any photography, video recording device or any electronic equipment is prohibited.

### Verandah Safety

Please do not leave any personal items on your verandah that may be blown overboard or present a fire hazard if left unattended. Guests should not sit, lean or climb on the railing or leave children unattended on the verandah. Do not open the verandah and stateroom doors simultaneously as this may create a wind effect and could cause the doors to slam unexpectedly.



**WELCOME ABOARD!**

## Key to the World Card Information

- Dinner seatings are 5:45 pm or 8:15 pm.
- Your table number for the cruise is located after your dinner seating.
- Dinner locations and rotation are indicated by letters under your dinner time.
  - A - Animator's Palate, Deck 3, Aft
  - E - Enchanted Garden, Deck 2, Midship
  - R - Royal Court, Deck 3, Midship

In case of an emergency, your lettered Assembly Station is indicated here.

**Sample Card:**  
 Disney Fantasy  
 Mickey Mouse  
 2017  
 Dinner: 8:15 - Table: 33  
**C**

# Key to the World Card Information

In case of an emergency,  
your lettered Assembly  
Station is indicated here.

**Information**

- ♥ Dinner seatings are 5:45 pm or 8:15 pm.
- ♥ Your table number for the cruise is located after your dinner seating.
- ♥ Dinner locations and rotation are indicated by letters under your dinner time.
  - A - Animator's Palate, Deck 3, Aft
  - E - Enchanted Garden, Deck 2, Midship
  - R - Royal Court, Deck 3, Midship

# SAILING AWAY

It's time to go Sailing Away!  
Join Mickey and Minnie along  
with Tinker Bell and the rest of  
the gang as they welcome you  
aboard the Disney Fantasy.

Deck Stage,  
Deck 11, Midship,  
4:30 pm

Disney Fantasy  
Mickey Mouse  
November 8-15 • Taipei 2017

Your Assembly Station is indicated on your Key To The World card.



Evening	7:00	7:15	7:30	7:45	8:00	8:15	8:30	8:45	9:00	9:15	9:30	9:45	10:00	10:15	10:30	10:45	11:00	11:15	11:30	11:45	12:00																					
FUNNEL VISION	Hercules (G)  Open Captioning Funnel Vision							WALL-E (G)  Open Captioning Funnel Vision							Big Hero 6 (PG)  Open Captioning Funnel Vision																											
BUENA VISTA THEATRE	A Wrinkle in Time (PG) Duration: 1 Hour 49 Minutes							Star Wars: Episode I. The Phantom Menace (PG) Duration: 2 Hours 16 Minutes																																		
CHARACTERS		Goofy Preludes	Minnie Balcony	Pluto Preludes	Mickey Balcony								Chip & Dale Lobby Atrium (V)	Minnie Balcony	Pluto Preludes	Mickey Balcony																										
			Ariel Lobby Atrium (V)		Tiana Lobby Atrium (V)								Goofy Preludes		Donald Lobby Atrium (V)																											
FUN FOR ALL AGES	Disney Tunes Trivia D Lounge							 Walt Disney Theatre 							Disney Trivia D Lounge							 D Lounge																				
	Jewish Sabbath Outlook																																									
	Family Dance Party The Tube														Mellow Sounds with Soul Duo Lobby Atrium																											
ADULTS	50's and 60's Music Trivia O'Gills Pub							Guitar with Rodrigo Figueroa O'Gills Pub							Club DJ Double ii The Tube							Majority Rules The Tube							 The Tube							Going Underground with Club DJ Double ii The Tube						
	Pop Music with Supernova Duo La Piazza																																									
VIBE 14-17 YEARS OLD	Open House 			Open for Teens			Foosball Tournament			GAGA Ball				Ice Breakers				The Download			Heroes and Villains							Teen Choice														
EDGE 11-14 YEARS OLD	GAGA Ball				Profiles				Game Challenge				Meet Your Counselors				Ice Breakers				Taking it to The Edge				Heroes and Villains				Tween Choice													
OCEANEER LAB 3-12 YEARS OLD	Ice Breakers				Super Sloppy Science				Game Challenge				Human Bingo				Anyone Can Cook								Scavenger Hunt																	
OCEANEER CLUB 3-12 YEARS OLD					McStuffin's Toy Hospital				Space Ranger Training				Game Challenge				Meet Your Counselors				GAGA Ball				Dress Up Fun				Once Upon a Time				Magic PlayFloor									

**DRINK**  
**OF THE DAY**

This symbol designates an activity that has an American Sign Language interpreter present.

## YOUTH ACTIVITIES UMENTHOUSE

**A non-secured program with activities for families, adults and children to enjoy together.**







**FANTASY  
COME TRUE**

**WALT DISNEY THEATRE**  
Deck 3 & 4, Forward  
**6:15 pm & 8:30 pm**

As a courtesy to all Guests, we kindly advise that the saving of seats is not permitted in the theatre.

Assistance available at the entrance to the Walt Disney Theatre 30 minutes prior to show time.

## Character Meet & Greet Ticket Distribution

Port Adventures Desk, Deck 5, Midship 11:45 am - 2:45 pm

For Guests who did not reserve Meet and Greets online, a limited number of tickets are available today to meet some of your favorite Disney friends.

- Princess Gathering
- Frozen Gathering
- Disney Junior Character Breakfast

Tickets are required for this meet and greet. Space is limited.

## Character Appearances

### SAILING AWAY

Deck 11 Stage - 4:30 pm

### MINNIE MOUSE

Balcony  
5:15 pm, 7:30 pm & 9:45 pm

### GOOFY

Preludes  
5:15 pm, 7:15 pm & 9:30 pm

### DONALD DUCK

Lobby Atrium (V)  
5:30 pm & 10:00 pm

### MICKY MOUSE

Balcony  
5:45 pm, 8:00 pm & 10:15 pm

### PLUTO

Preludes  
5:45 pm, 7:45 pm & 10:00 pm

### ARIEL

Lobby Atrium (V) - 7:30 pm

### PRINCESS TIANA

Lobby Atrium (V) - 8:00 pm

### CHIP & DALE

Lobby Atrium (V) - 9:30 pm



(H) Hallway - (S) Starboard Side - (P) Port Side - (V) Vestibule

For details of daily Disney character appearances, refer to the character line on your Navigator Grid, or the digital character board in the Lobby Atrium.

Lines close 15 minutes after given times.

## SHIP DIRECTORY

### YOUTH ACTIVITIES

DISNEY'S OCEANEER CLUB	DECK 5, MID	12:00 PM - 3:30 PM
		4:30 PM - 12:00 AM
DISNEY'S OCEANEER LAB	DECK 5, MID	12:00 PM - 3:30 PM
		4:30 PM - 12:00 AM
EDGE	DECK 13, MID	12:00 PM - 3:30 PM
		4:30 PM - 12:00 AM
IT'S A SMALL WORLD NURSERY	DECK 5, MID	12:00 PM - 3:30 PM
		4:30 PM - 11:00 PM
VIBE	DECK 4, FWD	12:00 PM - 3:30 PM
		4:30 PM - 12:00 AM

### POOLS & MORE

\* Children under 12 must have adult supervision in pool areas.

AQUADUCK	DECK 12, MID	12:00 PM - 3:00 PM
		4:30 PM - 10:00 PM
AQUALAB	DECK 12, AFT	12:00 PM - 3:15 PM
		4:30 PM - 6:00 PM
DONALD'S POOL	DECK 11, MID	12:00 PM - 3:15 PM
		6:00 PM - 10:00 PM
MICKEY'S POOL	DECK 11, MID	12:00 PM - 3:15 PM
		4:30 PM - 10:00 PM
MICKEY'S SLIDE	DECK 11, MID	12:00 PM - 3:15 PM
		4:30 PM - 6:00 PM
NEMO'S REEF	DECK 11, MID	12:00 PM - 3:15 PM
		4:30 PM - 6:00 PM
QUIET COVE POOL (18+)	DECK 11, FWD	12:00 PM - 11:00 PM
SATELLITE FALLS (18+)	DECK 13, FWD	12:00 PM - 8:00 PM

Please note, "selfie sticks" are not permitted in any aquatic area.

Complimentary pool vests are available for children to use in the pools onboard. They are located on the pool deck.

### RECREATION

GOLF/SPORTS SIMULATORS	DECK 13, AFT	12:00 PM - 3:15 PM
		4:30 PM - 6:00 PM
GOOFY GOLF	DECK 13, AFT	5:30 PM - 10:00 PM
GOOFY'S SPORTS DECK	DECK 13, AFT	12:00 PM - 6:00 PM
MIDSHIP DETECTIVE AGENCY	DECKS 2 & 5, MID	11:30 AM - 10:00 PM
PORT ADVENTURES DESK	DECK 5, MID	12:00 PM - 3:30 PM
		4:30 PM - 8:30 PM
SENSES FITNESS CENTER (18+)	DECK 11, FWD	11:30 AM - 10:00 PM

### GENERAL INFORMATION

CONNECT@SEA	DECK 4, MID	1:00 PM - 3:30 PM
		7:00 PM - 10:00 PM
DISNEY VACATION CLUB	DECK 4, MID	5:00 PM - 10:00 PM
DISNEY VACATION PLANNING	DECK 4, MID	7:30 PM - 8:30 PM
GUEST SERVICES	DECK 3, MID	24 HOURS
HAIR BRAIDING	DECK 11, MID	1:30 PM - 9:30 PM
MEDICAL HEALTH CENTER	DECK 1, FWD	4:30 PM - 7:00 PM
PORT SHOPPING DESK	DECK 4, MID	7:30 PM - 8:30 PM
PRELUDES	DECK 3, FWD	SHOWTIMES
SENSES SPA AND SALON	DECK 11, FWD	11:30 AM - 10:00 PM
SHUTTERS PHOTO GALLERY	DECK 4, MID	7:00 PM - 10:30 PM

### SHOPPING

BIBBIDI BOBBIDI BOUTIQUE	DECK 5, MID	12:00 PM - 3:00 PM
		5:00 PM - 9:00 PM
MICKEY'S MAINSAIL	DECK 3, FWD	5:45 PM - 11:00 PM
SEA TREASURES	DECK 3, FWD	5:45 PM - 11:00 PM
TIFFANY & CO.	DECK 4, MID	5:45 PM - 11:00 PM
VISTA GALLERY	DECK 2, MID	
WHITE CAPS	DECK 3, FWD	5:45 PM - 11:00 PM
WHOZITS & WHATZITS	DECK 11, MID	12:00 PM - 3:15 PM
		4:45 PM - 6:00 PM

DUE TO PORT REGULATIONS, WHEN THE SHIP IS DOCKED, THE STORES MUST REMAIN CLOSED.

**EVENING ATTIRE** | Cruise Casual

**WEATHER FORECAST** | Today: Partly Sunny  
High: 74°F/23°C

## DINING & LOUNGES

### LUNCH

CABANAS	DECK 11, AFT	11:45 AM - 3:00 PM
ENCHANTED GARDEN	DECK 2, MID	11:45 AM - 2:00 PM
FILLMORE'S FAVORITES	DECK 11, MID	12:00 PM - 3:30 PM
		4:15 PM - 6:30 PM
LUIGI'S PIZZA	DECK 11, MID	12:00 PM - 3:30 PM
		4:15 PM - 6:30 PM
TOW MATE'S GRILL	DECK 11, MID	12:00 PM - 3:30 PM
		4:15 PM - 10:00 PM

### DINNER

ANIMATOR'S PALATE	DECK 3, AFT	5:45 PM & 8:15 PM
ENCHANTED GARDEN	DECK 2, MID	5:45 PM & 8:15 PM
PALO (18+) (RESERVATIONS REQ. & NON-FEE APPLIES)	DECK 12, AFT	6:00 PM - 8:30 PM
REMY (18+) (RESERVATIONS REQ. & NON-FEE APPLIES)	DECK 12, AFT	6:00 PM - 8:30 PM
ROYAL COURT	DECK 3, MID	5:45 PM & 8:15 PM

### LATE NIGHT SNACKS

LA PIAZZA (18+)	DECK 4, AFT	10:45 PM - 11:30 PM
LUIGI'S PIZZA	DECK 11, MID	9:30 PM - 12:00 AM

### ADDED FEATURES

BEVERAGE STATION	DECK 11, MID	24 HOURS
EYE SCREAM	DECK 11, MID	11:00 AM - 3:30 PM
		4:15 PM - 11:00 PM
ROOM SERVICE	DIAL 0	24 HOURS
SWEET ON YOU	DECK 11, AFT	11:30 AM - 3:30 PM
		4:15 PM - 10:30 PM

### ENTERTAINMENT - LOUNGES - BARS

Adults must be 21 and older to consume alcoholic beverages.

BON VOYAGE	DECK 3, MID	11:45 AM - 10:30 PM
COVE BAR (18+)	DECK 11, FWD	11:45 AM - 10:30 PM
COVE CAFE (18+)	DECK 11, FWD	11:45 AM - 12:00 AM
CURRENTS (18+)	DECK 13, FWD	11:45 AM - 11:00 PM
D LOUNGE	DECK 4, MID	SHOWTIMES
LA PIAZZA (18+ AFTER 9:00 PM)	DECK 4, AFT	11:45 AM - 12:00 AM
THE TUBE	DECK 4, AFT	7:30 PM - 8:30 PM
		9:30 PM - 2:00 AM
FROZONE TREATS	DECK 11, MID	11:45 AM - 6:00 PM
MERIDIAN (18+)	DECK 12, AFT	5:00 PM - 12:00 AM
OUTLOOK (18+)	DECK 14, MID	
OOH LA LA (18+)	DECK 4, AFT	5:00 PM - 12:00 AM
O'GILLS PUB (18+ AFTER 9:00 PM)	DECK 4, AFT	11:45 AM - 12:00 AM
SENSES JUICE BAR	DECK 11, FWD	11:45 AM - 8:00 PM
SKYLINE (18+)	DECK 4, AFT	5:00 PM - 12:00 AM
VISTA CAFE	DECK 4, MID	11:45 AM - 10:30 PM
WAVES	DECK 12, AFT	11:45 AM - 6:00 PM

Public Health Advisory: Consuming raw or under-cooked meats, poultry, seafood, shellfish, or eggs may increase your risk for food borne illness, especially if you have certain medical condition.



### MIDSHIP DETECTIVE AGENCY

Use your detective know-how and our special detective "badge" to search the ship and catch your criminal! Deck 2 & 5, Midship Kiosks.

Visit the Port Adventures Desk,  
Deck 5, Midship, for bookings & questions.

### IMPORTANT NUMBERS

Fire/Security: 7-3001  
Medical Emergency: 7-3000  
Health Center: 7-1927