

# VOYAGE NAVIGATOR

SUNDAY  
FEBRUARY 18, 2018

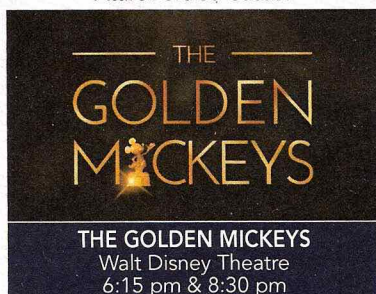
TO

SUNDAY  
FEBRUARY 25, 2018

## CRUISE HIGHLIGHTS

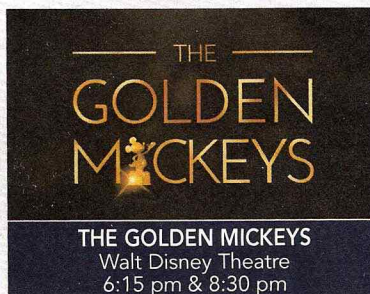
### SUNDAY

PORT CANAVERAL  
Port Departure: 5:00 pm  
All Aboard: 4:00 pm  
Attire: Cruise Casual



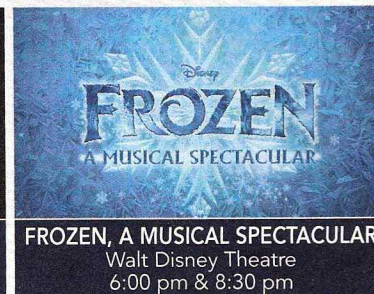
### MONDAY

DAY AT SEA  
Attire: Formal



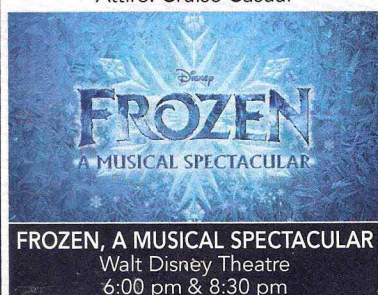
### TUESDAY

DAY AT SEA  
Attire: Cruise Casual



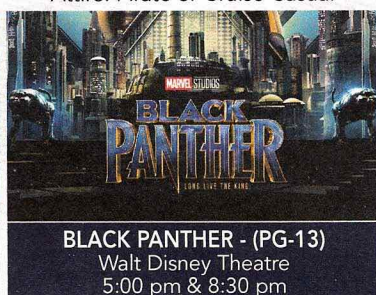
### WEDNESDAY

ST. MAARTEN  
All Ashore: 9:00 am  
All Aboard: 5:45 pm  
Attire: Cruise Casual



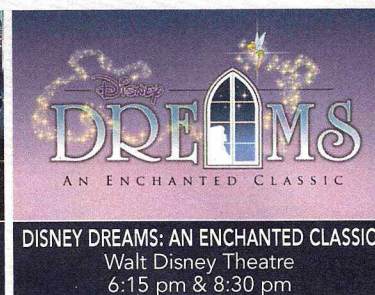
### THURSDAY

SAN JUAN  
All Ashore: 8:00 am  
All Aboard: 4:45 pm  
Attire: Pirate or Cruise Casual



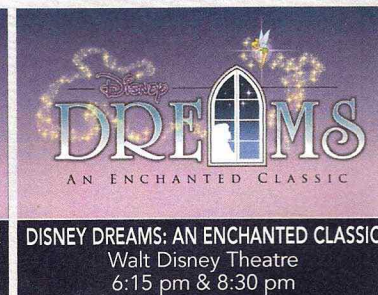
### FRIDAY

DAY AT SEA  
Attire: Semi Formal



### SATURDAY

DISNEY CASTAWAY CAY  
All Ashore: 8:30 am  
All Aboard: 4:45 pm  
Attire: Cruise Casual



Subject to change.

## WELCOME ABOARD!

### YOUR STATEROOM & LUGGAGE

Staterooms will be ready at 1:30 pm. To allow your Stateroom Host/ess time to prepare your room, please do not remove the blue stanchion straps. Stateroom hosts will deliver luggage throughout the day until 5:30 pm.

### STATEROOMS WITH BUNK BEDS

Bunk beds are recessed into the ceiling and will be prepared during evening turndown service by your Stateroom Host/ess.

### STATEROOM SAFE

Each stateroom is equipped with a secured storage safe. Instructions for use are located on the safe.

### TO CHANGE DINING ASSIGNMENT

Requests for different seating times will be taken today:

• 12:30 pm - 3:30 pm; Book in Promenade Lounge, Deck 3, Aft or please dial 7-10891 and leave a voicemail.

### PALO DINING RESERVATIONS

Reservations are required and will be taken on a first come basis today:

• 12:30 pm - 3:30 pm; Book in Promenade Lounge, Deck 3, Aft or please dial 7-6843 and leave a voicemail.

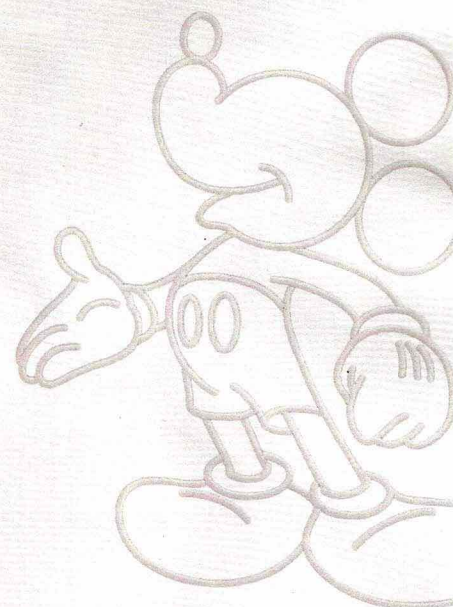
**Adult Exclusive Dining Opportunity!** Guests are invited to make 2 dinner reservations at our adult-exclusive restaurant, Palo. This includes one reservation on embarkation evening and one more on another night of the cruise. Reservations are subject to availability and a specialty dining charge will apply.

### DINNER

5:45 pm - First seating 8:15 pm - Second seating

Please check your Key To The World Card for details of your dining rotation, and bring them to your specific dining location. There is no need to wait in line prior to dinner. Dining Rooms open at designated seating times and your table is reserved each night of your cruise.

AP = Animator's Palate, Deck 4, Aft TR = Triton's, Deck 3, Midship TP = Tiana's Place, Deck 3, Aft



Create the most memorable experiences during your Disney Cruise Line vacation with Port Adventures! Our Port Adventures are designed for you to see the best our ports have to offer. Stop by the Port Adventures Desk, Deck 3, Midship where our friendly team will be happy to assist you plan your adventure!

There is an adventure for everyone on your Disney Wonder® vacation.

### IMPORTANT NUMBERS

Fire/Security: 7-3001

Medical Emergency: 7-3000

Health Center: 7-1927



# ADULT ACTIVITY HIGHLIGHTS



**1820 SOCIETY (GUESTS 18-20 YEARS ONLY)**  
1820 Society is an exclusive option for young adult Guests. Come meet fellow passengers and learn about the excellent activities that the Disney Wonder offers to create the perfect cruise experience.



**80'S FLASHBACK**  
The 80's are back! Join your Cruise Staff team, in testing your 80's knowledge in this high energy 80's revival.



**ANYONE CAN COOK**  
Every Chef has a specialty, and ours is no exception. Get a taste of perfection with each recipe.

## ART OF THE THEME SHOW TOUR

Join us for a guided tour highlighting the design, Imagineering and artistry of the ship. This tour is reserved for Guests 18 and over.

## CRUISIN' SOLO GATHERING

Single, single parent or just traveling alone? Join your Cruise Staff for an informal gathering.



**DISNEY INNOVATIONS**  
Take part in our presentation on the 'Top 10' innovations presented by the Walt Disney Company.



**MATCH YOUR MATE**  
It's time to play everyone's favorite couples game show, Match Your Mate!



*Senses Spa & Salon has a variety of seminars and fitness classes available throughout the cruise. Pamper yourself with therapeutic spa treatments of heat, steam, rain and water in luxurious and tranquil private rooms. Deck 9, Forward.*

## BEVERAGE SEMINARS

Your Beverage team has a host of tastings and seminars to entertain and educate you. Stop by Promenade Lounge, Deck 3. Aft to pre-book these experiences (nominal fee applies).

Mixology - Stem to Stern Wine Tasting - Martini Tasting - Champagne Tasting

Beer Tasting - Cognac Tasting - Whisky Tasting

Tequila & Margarita Tasting - Chocolate & Liquor Tasting - Rum Tasting

# FUN FOR ALL AGES HIGHLIGHTS



## ADVENTURES AWAY

Earn your status as V.I.P. sailors as your Cruise Director, your Disney Pals, and the Cruise Staff officially begin your "Adventures Away".

## A PIRATES LIFE FOR ME

Calling all Pirates, we be! If ye have an adventurous spirit or pirate savvy, come spin the "Wheel of Destiny" for a treasure trove of fun be ripe for the takin' in this action packed pirate game show.



## DISNEY JUNIOR PIRATE & PRINCESS DANCE PARTY

Calling all Pirates and Princesses! Come join us for a family dance party featuring music and fun activities from Jake & the Neverland Pirates and Sofia the First. Whether you favor tiaras or treasure chests, there's something for you at our Disney Junior Pirate & Princess Dance Party!



## DISNEY VACATION CLUB GROUP PREVIEW

Join us for our interactive group presentation to learn about taking magical vacations year after year! For more information, please see a Disney Vacation Club Cast Member on Deck 4, Midship, or call 7-2805 from your stateroom phone.



## FAMILY SUPERSTAR KARAOKE

Join your Cruise Staff and sing along to your favorite song, fun for everyone.



## FAMILY TALENT SHOW SIGN UP

Pre-register at the Port Adventures Desk, Deck 3, Midship. Let your family take center stage and strut their stuff. Everyone has a talent, it's time to show off yours! Pre-register at the Port Adventures Desk.

## GAME SHOW: THE FEUD

"Survey Says" you'll have a fantastic time with our version of a classic game.

## GAME SHOW: THE WHEEL

A special version of this popular TV game show.



## JACK-JACK'S INCREDIBLE DIAPER DASH

Calling all baby cruisers! It's time to take to the mat to see who's the fastest crawler of the seven seas! Register your baby 15 minutes prior to the big race.



## JACKPOT BINGO

CASH prizes and raffle prizes to be won in our family friendly Bingo sessions with your Cruise Staff. Those under the age of 18 must be accompanied by an adult to play!



## MICKEY MANIA

Join us for the ultimate test of your Disney knowledge as we play our live, interactive game show, that's "insania!"



## PIRATES IN THE CARIBBEAN DECK PARTY

Yer Disney Friends are all set for a swashbucklin' good time! It's a Pirate Celebration, me hearties! Hoist yourself to Deck 9 to enjoy a rowdy buccaneer bash we call Pirates IN the Caribbean Deck Party.



## SO YOU THINK YOU KNOW YOUR FAMILY?

This fun-filled family game show is always full of surprises. Find out how well you know, or don't know your family!



## WAKE UP WITH DISNEY JUNIOR

What happens when you experience unlimited fun with your favorite Disney Junior shows? You get an exciting dance party designed especially for preschoolers ages seven and under.



## WHO WANTS TO BE A MOUSEKETEER?

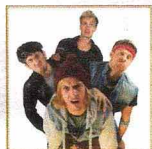
Your chance to get into the "hot seat" and win limited edition prizes. Or, play along as part of our live studio audience.



## 'TIL WE MEET AGAIN

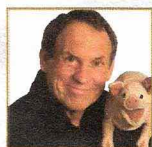
The world-famous Disney Characters and some of your new friends from the Disney Wonder stage shows bid you a charming farewell.

## FEATURED VARIETY ACTS THIS VOYAGE



### THE PERCUSSION & COMEDY OF JUNNK

JunNk use bins, bottles, ladders and drainpipes to create a lively, hilarious and utterly enthralling fast paced show, providing a fresh outlook on today's modern entertainment scene.



### THE COMEDY & VENTRILOQUISM OF TAYLOR MASON

There is truly no other comedy entertainer in the world like TAYLOR MASON. Combining music, ventriloquism, stand-up comedy and audience participation in a solo performance that has no equal, this former Star Search Grand Champion has been making audiences laugh, very hard, for almost three decades.



### THE PHYSICAL COMEDY OF CHARLES PEACHOCK

Charles Peachcock has just returned from the #1 show America's Got Talent, where he appeared more than any juggler in the show's 6 year history. Along with his incredible skill, he brings professionalism and personality wherever he performs. Charles has been performing professionally for over 15 years. With his sharp wit and performing, he's crafted a one of a kind show you don't want to miss.



### THE MAGIC & COMEDY OF NICK PAUL

Nick Paul is an award winning L.A. based entertainer known for his unique combination of physical comedy and magic. Nick is a regular featured performer at the world famous Magic Castle in Hollywood. His Fringe Festival show "Impossible Feats of Fake Magic" received rave reviews. Nick was awarded critics pick for "Best Variety Show" by the Orlando Sentinel and voted "Top 10 Shows to See" by Time Out L.A.

Please Check Daily Personal Navigator for all times and locations.



# YOUTH ACTIVITIES INFO & HIGHLIGHTS



## Dine & Play

As a convenience for families dining at 8:15 pm, our Youth Activities counselors will be available at the entrance of each restaurant to bring registered children to join the fun in the Youth Activities areas at the following times:

9:15 pm at the entrance of Triton's,  
9:30 pm at the entrance of Tiana's Place and Animator's Palate.

## Pre-School Fun

Disney's Oceaneer Club is reserved for only those between 3-5 years of age. This is a time for them to become acclimated to Disney's Oceaneer Club, make new friends and join in on a lot of fun-filled programs and activities. Please note after Pre-School Fun has concluded, Disney's Oceaneer Club will be open for Secured Programming for ages 3-12.

## Youth Activities Open House

Open House is an opportunity for all to come and participate in a variety of exciting activities and free time in the Oceaneer Club, Oceaneer Lab, Edge and Vibe throughout the cruise. During these times secured programming will still be offered in the other venue for those looking to check their children into care.

## Youth Activities Venue Tour

Come and take a tour of Disney's Oceaneer Club and Disney's Oceaneer Lab. This informative tour will give you the information you need to know about our exciting spaces and activities offered for children ages 3-12. Please see your Personal Navigator or the Navigator App for times.



3 - 12 years old

## JOIN THE LION GUARD

Harness your inner animal and find out if you have what it takes to join the Lion Guard!

## MILES' COSMIC EXPLORER ADVENTURES

Miles needs your help! Gadfly has stolen his tech, and it's up to you to solve clues and puzzles in order to return the missing items back to Miles.

## SOFIA THE FIRST - MAGICAL STORYTELLING

You're invited to take part in Sorcery 101 at the Royal Prep Academy, where you'll learn a few spells and help retell one of Sofia's many magical adventures.



3 - 12 years old

## LAVA FLOW

Build your own volcano and watch it erupt as you learn about the physics of volcanoes.

## MAKE A SHOW DISNEY STYLE

OPEN CALL - kids needed for a fun, one of a kind, make it your own show. Working in teams you'll have everything you need to make your own show in 90 minutes or less. Whether you're a Beauty or a Beast, you're sure to have fun!

## PISTON CUP CHALLENGE

It's Dinoco time and you're part of the pit crew! Design your own race car and see if you've got what it takes to end up in the winner's circle!



11 - 14 years old

## HEROES AND VILLAINS

Join your favorite hero or villain team on a series of activities that will take place throughout the cruise.

## DESCENDANT'S DEN DJ SPIN OFF

Photo Booth! DJ lessons! Fun games! Sing! Laugh! Dance! It's the next generation of fun - Descendants style!



14 - 17 years old

## GOTCHA

You will try to eliminate your victim by various methods collecting points throughout the day, last person standing with the most points wins.

## THAT'S HILARIOUS

Ever wanted to show off your comedy skills? Then be a part of the cast for the crazy improv show "That's Hilarious" and put on a live show for your friends.

# BUENA VISTA THEATRE

Deck 5, Aft

## FEATURE MOVIES THIS VOYAGE

### SUNDAY - PORT CANAVERAL

1:45 pm	G	Cars 3
5:30 pm	PG	Coco
8:00 pm	PG	Coco
10:15 pm	G	Cars 3



### MONDAY - DAY AT SEA

9:30 am	PG	Family Movie Fun Time: Beauty and the Beast (2017)
12:15 pm	G	Cars 3
2:30 pm	PG-13	Thor: Ragnarok
5:15 pm	PG	Beauty and the Beast (2017)
8:00 pm	PG	Beauty and the Beast (2017)
10:30 pm	PG	Coco

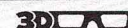
### TUESDAY - DAY AT SEA

9:00 am	PG	Family Movie Fun Time: Coco
2:15 pm	PG-13	Guardians of the Galaxy Vol. 2
5:00 pm	PG-13	Star Wars: The Last Jedi
8:00 pm	PG-13	Star Wars: The Last Jedi
11:00 pm	PG-13	Guardians of the Galaxy Vol. 2



### WEDNESDAY - ST. MAARTEN

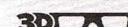
9:00 am	PG-13	Thor: Ragnarok
11:30 am	PG	Beauty and the Beast (2017)
2:15 pm	PG-13	Star Wars: The Last Jedi
5:15 pm	PG-13	Thor: Ragnarok
8:00 pm	PG-13	Thor: Ragnarok
10:30 pm	PG-13	Star Wars: The Last Jedi



cc Open Captioning

### THURSDAY - SAN JUAN

12:00 pm	PG-13	Guardians of the Galaxy Vol. 2
2:45 pm	PG-13	Thor: Ragnarok
5:30 pm	PG	Coco
8:30 pm	PG	Coco
10:45 pm	PG	Black Panther



### FRIDAY - DAY AT SEA

9:00 am	PG-13	Black Panther
12:00 pm	PG	Coco
2:15 pm	PG-13	Star Wars: The Last Jedi
5:15 pm	PG-13	Black Panther
8:00 pm	PG-13	Black Panther
10:45 pm	PG-13	Thor: Ragnarok



### SATURDAY - DISNEY CASTAWAY CAY

12:00 pm	PG	Coco
2:15 pm	PG-13	Black Panther
5:00 pm	PG-13	Star Wars: The Last Jedi
8:00 pm	PG-13	Star Wars: The Last Jedi
11:00 pm	PG-13	Black Panther



cc Open Captioning

Subject to change.



# MORE TO ENJOY ONBOARD

## NEW SPRING 2019 ITINERARIES

New Spring 2019 Itineraries announced! Set sail for favorite tropical destinations as Disney Cruise Line will return to The Bahamas, Caribbean and even Baja cruises! Visit the Disney Vacation Planning desk, Deck 4, Midship for more information. Disney Vacation Planning tends to get busy on the last day of sailing. Don't miss the opportunity to plan your next Disney vacation.

## DISNEY VACATION CLUB® GROUP PREVIEW

Join us for our interactive group presentation to learn about taking magical vacations year after year! For more information, please see a Disney Vacation Club Cast Member on Deck 4, Midship, or call 7-2805 from your stateroom phone.

## PORT SHOPPING INFORMATION

Come and meet Michael, your Port Shopping Guide, at the Port Shopping Desk, Deck 3, Midship from 7:00 pm - 8:30 pm for a complimentary charm. Don't miss the Port Shopping Talk on Day at Sea 2 in the Buena Vista Theatre, Deck 5, Aft, at 11:45 am for all of your Port Shopping information and to enter a raffle for a chance to win a Diamond Pendant. Tune into Channel 24-6 all cruise long for more Port Shopping information.

## Connect@Sea

### FREE INTERNET EMBARKATION DAY SPECIAL

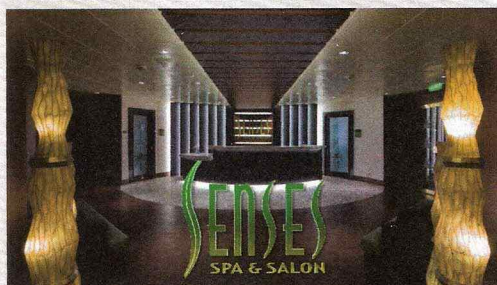
Sign up for a free 50 MB Internet package today and enjoy it throughout the cruise! This offer is only available from noon to midnight on the day your cruise begins. On your wireless device, simply find the "DCL-Guest" Wi-Fi Network, go to [www.dclguest.com](http://www.dclguest.com) to create an account, and get your free 50 MB of data to start sharing your memories even before you leave port! If you have any questions, ask our Connect@Sea Expert located at Deck 3, Midship. No purchase necessary. The free 50 MB package can only be used for the duration of the cruise. Only one free package per stateroom, but everyone can share it. Unused data from a package will not be reimbursed and it is non-transferable between voyages or ships.

## RELIGIOUS SERVICES

Groups who need a location to practice their faith may contact Guest Services for availability information.



## SENSES SPA & SALON



### DECK 9, FORWARD Extension 7-1465

#### RAINFOREST

Come enjoy our serenity lounge, with heated chairs, dry sauna, aromatherapy steam rooms and rainfall, misting showers.

7 Day Pass: Couples \$193 Single \$144

#### REJUVENATION SPA CONSULTATIONS

Ready to enhance your natural beauty? Book your free Facial Rejuvenation consultation with our Rejuvenation Dr. at the Senses Spa.

#### ONBOARD ACUPUNCTURE

Acupuncture is a safe and effective medicine that allows your body to heal itself, and is effective for various health conditions. See your onboard Acupuncturist for your free consultation.

#### IONITHERMIE

Lose between 1 – 8 inches? Speed up your metabolism. Firm muscle tone.

Improve appearance of cellulite. \$155/1 session or \$299/3 sessions.

**AN 18% AUTO GRATUITY IS ADDED TO ALL SENSES SPA SERVICES.**

## MERCHANDISE SHOPPING



### DECK 4, FORWARD

#### EFFY JEWELRY

Known for their bold designs, EFFY jewelry is meticulously crafted with every design overseen by its founder, who plays a key role in the journey of each piece. A stylish collection of EFFY jewelry pieces is now available onboard and are waiting for you to discover them in White Caps, Deck 4, Forward.

#### NEW DOONEY & BOURKE ONBOARD

Loved for their fine leather and unique designs, Dooney & Bourke creates styles that are sure to inspire. Visit White Caps and check out the new Dooney & Bourke handbags designed especially for Disney Cruise Line. Deck 4, Forward.

#### 2018 DISNEY CRUISE LINE MERCHANDISE

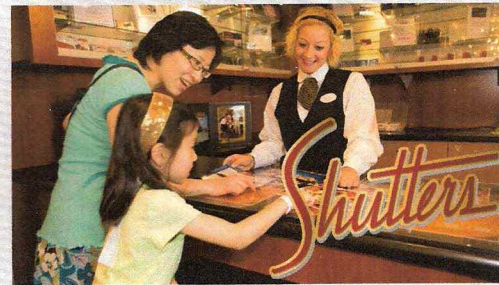
Step into Mickey's Mainsail today and commemorate your Disney Cruise with a wide selection of 2018 Disney Cruise Line merchandise starring Steamboat Willie. From casual apparel to drinkware, you are sure to find a special souvenir for the whole family.

#### BIBBIDI BOBBIDI BOUTIQUE

A makeover fit for a princess! Fairy Godmothers-in-Training are ready with magic and pixie dust to give your Prince and Princess the transformation of a lifetime. Make your reservations by visiting Bibbidi Bobbidi Boutique, Deck 10, Forward, Port Side, or dialing extension 7-10878. Limited space available.

**DUE TO PORT REGULATIONS, WHEN THE SHIP IS DOCKED, THE STORES WILL REMAIN CLOSED.**

## SHUTTERS PHOTO GALLERY



### DECK 4, AFT

#### WELCOME ABOARD RAFFLE

View your embarkation photos in Shutters, Deck 4, Aft and enter our raffle for a chance to win a 10 Digital Photos valued at \$149.95. Winner must be present at the 10:00 pm drawing in Shutters, Deck 4, Aft.

\*Terms and conditions apply.

Visit Shutters on Deck 4, Aft for more information.

#### GET THE PICTURE!

Take home all your stateroom photos from this cruise on a USB! Terms and conditions apply. Visit Shutters on Deck 4, Aft and ask your friendly Shutters staff for more information.

Get The Picture! Hurry! Order yours now.

#### PHOTO BOOK

Turn your magical vacation memories into an impressive keepsake with a personalized PhotoBook. Order by 9:30 pm on the final night of the cruise.

#### PRIVATE STUDIO PORTRAITURE

Book our exclusive and contemporary Private Studio experience today and capture these memories. No obligation to purchase. Black and White only.

**PHOTOS ARE AVAILABLE FOR VIEWING ON OUR INTERACTIVE PHOTO KIOSKS APPROXIMATELY FIVE HOURS AFTER BEING TAKEN AND ARE ONLY AVAILABLE FOR PURCHASE DURING THIS CRUISE.**

## IMPORTANT INFORMATION

### Security Notice

All Guests (including children) who wish to disembark the ship are required to present their Key to the World card at the gangway. A photo ID is also required for those Guests who are 18 years of age or older. Guests under the age of 18 are required to have a parent, guardian or other responsible adult sign an authorization form at the Guest Service Desk if they wish to go ashore unaccompanied or with any adult from another stateroom.

### Inclement Weather

For the safety of all Guests, outdoor events may be changed due to unforeseen weather conditions.

### Insect Repellent Advisory

The Centers for Disease Control and Prevention recommends wearing long-sleeved shirts and pants along with insect repellent to protect against mosquito bites and related illnesses when going ashore. Complimentary insect repellent is available on the pier as you exit the ship. Insect repellent is also available for purchase in White Caps. When using both sunscreen and insect repellent, use sunscreen first and apply insect repellent on top of sunscreen.

### Corridor Quiet Hours

As a courtesy to all our Guests, please recognize quiet hallway hours from 10:00 pm til 8:00 am.

### Environmental Message

With Disney's commitment to the Environment, please refrain from throwing anything over the Ship's side. Thank you!

### No Reserved Seats Policy

As a courtesy to all our Guests, we kindly advise that the saving of seats is not permitted in the Walt Disney Theatre, and the saving of the sun loungers is not permitted on Deck 9 and 10. Items left unattended will be returned to lost and found at Guest Services, Deck 3 Midship.

### Cold and Flu Reminder

Please wash hands frequently and thoroughly, particularly before meals. Contact the Health Center by dialing 7-1927, should anyone in your party become ill.

### Smoking

For the comfort of our Guests, the following areas are designated as smoking areas:

\*Deck 9, Forward, Port Side

\*Deck 4, Starboard side from 6:00 pm to

6:00 am only (all of Deck 4 is non-

smoking from 6:00 am to 6:00 pm)

Smoking is prohibited inside all Guest

staterooms and on stateroom verandahs.

Guests found smoking in their staterooms

or on their verandahs will be charged a

\$250 stateroom recovery fee. Electronic

cigarettes may only be used in designated

smoking areas.

### Walt Disney Theatre

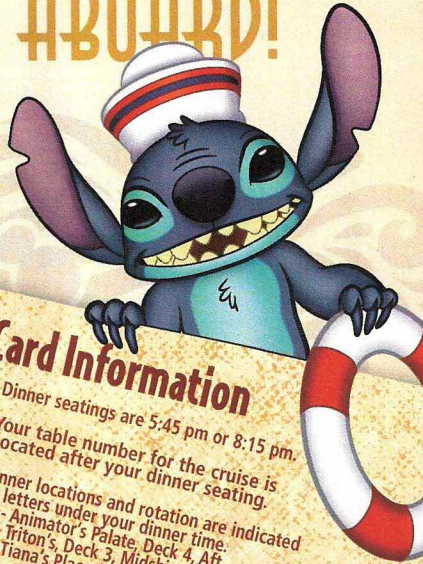
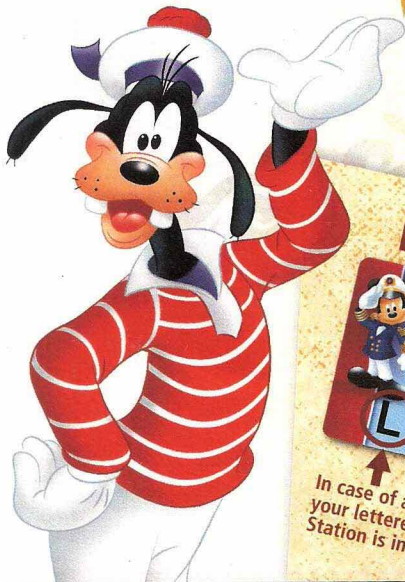
Theatrical performances may use artificial fog, strobe lights, pyrotechnics and other special effects. For the safety of our performers and the comfort of those around you, the use of any photography, video recording device or any electronic equipment is prohibited.

### Verandah Safety

Please do not leave any personal items on your verandah that may be blown overboard or present a fire hazard if left unattended. Guests should not sit, lean or climb on the railing or leave children unattended on the verandah. Do not open the verandah and stateroom doors simultaneously as this may create a wind effect and could cause the doors to slam unexpectedly.



# WELCOME ABOARD!



## Key to the World Card Information

**Dinner**: 5:45-Table:46  
TP-TR-AP-TP-TR-AP-TP

In case of an emergency, your lettered Assembly Station is indicated here.

**Dinner seatings are 5:45 pm or 8:15 pm.**

Your table number for the cruise is located after your dinner seating.

Dinner locations and rotation are indicated by letters under your dinner time:  
 AP - Animator's Palate, Deck 4, Aft  
 TR - Triton's, Deck 3, Midship  
 TP - Tiana's Place, Deck 3, Aft

## ADVENTURES AWAY!

### FAMILY DECK PARTY

Earn your status as V.I.P. sailors as your Cruise Director, Natalie, your Disney Pals, and the Cruise Staff officially begin your "Adventures Away".

**Deck 9 Stage, 4:30 pm**

**DRINK OF THE DAY**  
 Paradise Punch (Alcoholic)  
 Espresso Chiller (Non-Alcoholic)

Afternoon	1:45	2:00	2:15	2:30	2:45	3:00	3:15	3:30	3:45	4:00	4:15	4:30	4:45	5:00	5:15	5:30	5:45	6:00	6:15	6:30	6:45	
FUNNEL VISION	The Hunchback of Notre Dame (G)  Open Captioning Funnel Vision						<div>Mandatory Guest Assembly Drill 4:00 pm (All Guests must attend)</div> <div>All ship services will be suspended during this time.</div> <div>Refer to the posted drill instructions on the back of your stateroom door prior to heading to Deck 4. Please bring your Key to the World Card.</div> <div>You will not need your life jacket for the Guest Assembly Drill.</div> <div> Disney Cruise Line Disney Member Mickey Mouse Room: 848 Tailor at 170, 171, 172, 173, 174, 175, 176, 177</div> <div>Your Assembly Station is indicated on your Key To The World card.</div>						Adventures Away Deck 9 Stage		The Princess and the Frog (G)  Open Captioning Funnel Vision							
BUENA VISTA THEATRE	Cars 3 (G) Duration: 1 Hour 49 Minutes												Coco (PG) Duration: 1 Hour 49 Minutes									
CHARACTERS	Join the Lion Guard Oceaneer Club												Pluto Lobby Atrium (P)		<div>Red Carpet Arrivals</div> <div>THE GOLDEN MICKEYS Walt Disney Theatre</div> <div>Animation: Mickey Mouse D Lounge</div> <div>Gameshow: The Wheel D Lounge</div>							
FUN FOR ALL AGES	Walking Ship Tour Preludes												Family Dance Party with the Dreamers Promenade Lounge									
ADULTS	Spa Open House Senses Spa Fitness Center						Spa Raffle Senses Spa Fitness Center						Footprint Analysis Senses Spa Fitness Center		Cruisin' Solo Gathering Cove Cafe							
VIBE 14-17 YEARS OLD	Youth Activities Open House												Acoustic Sounds with Martyn Rowlands Quiet Cove Pool									
EDGE 11-14 YEARS OLD	Youth Activities Open House												Youth Activities Open House		Open for Teens							
OCEANEER LAB 3-12 YEARS OLD	Youth Activities Open House						Youth Activities Tour  Open House						Youth Activities Open House		Open for Tweens							
OCEANEER CLUB 3-12 YEARS OLD	Open House Join the Lion Guard  Youth Activities Open House												Youth Activities Open House		Meet Your Counselors							
													Youth Activities Open House		Pre-School Fun (3-5 Years Old)							

Fold along the dotted lines and take me with you so you don't miss any of the fun!

Disney WONDER																										
Evening	7:00	7:15	7:30	7:45	8:00	8:15	8:30	8:45	9:00	9:15	9:30	9:45	10:00	10:15	10:30	10:45	11:00	11:15	11:30	11:45	12:00					
FUNNEL VISION			Frozen Fever (G) Funnel Vision		The Incredibles (PG)  Open Captioning Funnel Vision									Guardians of the Galaxy (PG-13) Funnel Vision												
BUENA VISTA THEATRE					Coco (PG) Duration: 1 Hour 49 Minutes								Cars 3 (G)   Open Captioning Duration: 1 Hour 49 Minutes													
CHARACTERS				Mickey Lobby Atrium (P)			Red Carpet Arrivals	THE GOLDEN MICKEYS Walt Disney Theatre				Pluto Lobby Atrium (P)														
	Pluto Lobby Atrium (P)			Mickey Lobby Atrium (P)																						
FUN FOR ALL AGES			Disney Tunes Trivia D Lounge				Red Carpet Arrivals	Game Show: The Wheel D Lounge				Animation: Mickey Mouse D Lounge				Disney Trivia D Lounge	Family Karaoke D Lounge									
			Family Dance Party Azure															Acoustic Sounds with The Dreamers Promenade Lounge					Chilled Sounds with The Dreamers Promenade Lounge			
ADULTS			Music Trivia Crown & Fin Pub			Alive With the Sound of Broadway with Josh Freilich Cadillac Lounge					Music Through the Decades Cadillac Lounge		The Feud Azure 1820 Society: Stir it, Blend it, Taste it. Cove Cafe	Wonder Quest Azure		Cruise Staff DJ Azure										
			Songs from Today with Aaron Lotzow Cadillac Lounge										Music Through the Decades Crown & Fin Pub											Piano Requests Cadillac Lounge		
VIBE 14-17 YEARS OLD			Rockband Challenge					Profiles			Ice Breakers					Ninja	The Download		Heroes and Villains							
EDGE 11-14 YEARS OLD			Wii Challenge					Profiles			Ice Breakers					Taking it to The Edge	Ninja		Heroes and Villains							
OCEANEER LAB 3-12 YEARS OLD			Oceaneer Rangers					Game Challenge					Piston Cup Challenge					Color Yourself Heroic			Wii Challenge					
OCEANEER CLUB 3-12 YEARS OLD			Welcome Party				Scavenger Hunt						Space Ranger Training					Parachute Games				MARVEL Super Hero Academy Avengers Assemble				

FOLD

ASL - AMERICAN SIGN LANGUAGE INTERPRETED

YOUTH ACTIVITIES OPEN HOUSE  
 A non-sectarian program with activities for families, adults and children to enjoy together.





# THE GOLDEN MICKEYS

WALT DISNEY THEATRE

Deck 4, Forward  
6:15 pm & 8:30 pm

As a courtesy to all Guests, we kindly advise that the saving of seats is **not** permitted in the Walt Disney Theatre.

Assistance is available at the entrance to the Walt Disney Theatre 30 minutes prior to show time.

## Character Meet & Greet Ticket Distribution

*Port Adventures Desk, Deck 3, Midship - 12:00 pm - 2:00 pm*

For Guests who did not reserve meet and greets online, a limited number of tickets are available today to meet some of your favorite Disney friends.

Princess Gathering ~ Frozen Meet and Greet

Disney Jr. Character Breakfast

Tickets are required for each of these meet and greets.  
Space is limited.

## Character Appearances

**JOIN THE LION GUARD**  
Disney's Oceaneer Club  
2:00 pm

**ADVENTURES AWAY**  
Deck 9 Stage - 4:30 pm

**PLUTO**  
Lobby Atrium (P)  
5:15 pm, 7:15 pm & 9:30 pm

**MICKEY MOUSE**  
Lobby Atrium (P)  
7:45 pm & 10:00 pm



(S) Starboard Side - (P) Port Side

For details of daily Disney character appearances, refer to the character line on your Navigator Grid, or the digital character board in the Lobby Atrium.  
Lines close 15 minutes after advertised start time.

## SHIP DIRECTORY

### YOUTH ACTIVITIES

DISNEY'S OCEANEER CLUB	DECK 5, MID	12:00 PM - 3:30 PM 4:30 PM - 12:00 AM
DISNEY'S OCEANEER LAB	DECK 5, MID	12:00 PM - 3:30 PM 4:30 PM - 12:00 AM
EDGE	DECK 9, MID	12:00 PM - 3:30 PM 4:30 PM - 12:00 AM
IT'S A SMALL WORLD NURSERY	DECK 5, AFT	12:00 PM - 3:30 PM 5:30 PM - 11:00 PM
VIBE	DECK 10, MID	12:00 PM - 3:30 PM 4:30 PM - 12:00 AM

### POOLS

Children under 12 years of age must have adult supervision in all pools.

AQUALAB	DECK 9, AFT	12:00 PM - 3:30 PM 4:30 PM - 8:00 PM
DORY'S REEF	DECK 9, AFT	12:00 PM - 3:30 PM 4:30 PM - 6:00 PM
GOOFY'S POOL	DECK 9, MID	12:00 PM - 3:30 PM 5:30 PM - 10:00 PM
QUIET COVE POOL (18+)	DECK 9, FWD	12:00 PM - 3:30 PM 4:30 PM - 11:00 PM
TWIST N' SPOUT	DECK 9, AFT	12:00 PM - 3:00 PM 4:30 PM - 8:00 PM

Please note, "selfie sticks" are not permitted in any aquatic area.  
Complimentary pool vests are available for children to use in the pools onboard.  
They are located on the pool deck.

### RECREATION

CHILL SPA	DECK 9, FWD	12:00 PM - 10:00 PM
PORT ADVENTURES DESK	DECK 3, MID	12:00 PM - 3:30 PM 4:30 PM - 8:30 PM
SENSES FITNESS CENTER (18+)	DECK 9, FWD	12:00 PM - 10:00 PM
WIDE WORLD OF SPORTS DECK	DECK 10, FWD	12:00 PM - 3:30 PM 4:30 PM - 11:59 PM

### GENERAL INFORMATION

BUENA VISTA THEATRE	DECK 5, AFT	SHOWTIMES
CONNECT@SEA DESK	DECK 3, AFT	1:00 PM - 4:00 PM 7:00 PM - 10:00 PM
DISNEY VACATION CLUB DESK	DECK 4, MID	5:00 PM - 10:00 PM
DISNEY VACATION PLANNING DESK	DECK 4, MID	7:00 PM - 8:30 PM
FUNNEL VISION	DECK 9, MID	SHOWTIMES
GUEST SERVICES	DECK 3, MID	24 HOURS
HAIR BRAIDING	DECK 9, MID	2:30 PM - 3:30 PM
MEDICAL HEALTH CENTER	DECK 1, FWD	4:30 PM - 7:00 PM
PORT SHOPPING DESK	DECK 3, MID	7:00 PM - 8:30 PM
PRELUDES	DECK 4, FWD	5:30 PM - 9:30 PM
SENSES SPA AND SALON	DECK 9, FWD	12:00 PM - 10:00 PM
SHUTTERS PHOTO GALLERY	DECK 4, AFT	6:00 PM - 10:30 PM
WALT DISNEY THEATRE	DECK 4, FWD	SHOWTIMES

### SHOPPING

ART GALLERY	DECK 4, MID	7:00 PM - 9:00 PM
BIBBIDI BOBBIDI BOUTIQUE	DECK 10, FWD	12:00 PM - 3:00 PM 5:00 PM - 9:00 PM
MICKEY'S MAINSAIL	DECK 4, FWD	6:00 PM - 11:00 PM
QUACKS	DECK 9, MID	
SEA TREASURES	DECK 3, FWD	6:15 PM - 10:00 PM
WHITE CAPS	DECK 4, FWD	6:00 PM - 11:00 PM

**EVENING ATTIRE** Cruise Casual

**WEATHER FORECAST** Today: Partly Sunny  
High: 72°F/22°C

## DINING & LOUNGES

### LUNCH

CABANAS	DECK 9, AFT	12:00 PM - 3:00 PM
DAISY'S DE LITES	DECK 9, AFT	12:00 PM - 3:30 PM 4:30 PM - 6:00 PM
PINOCCHIO'S PIZZERIA	DECK 9, MID	12:00 PM - 3:30 PM 4:30 PM - 6:00 PM
PETE'S BOILER BITES	DECK 9, AFT	12:00 PM - 3:30 PM 4:30 PM - 6:00 PM
TRITON'S (À-LA CARTE)	DECK 3, MID	11:45 AM - 1:30 PM

### DINNER

ANIMATOR'S PALATE	DECK 4, AFT	5:45 PM & 8:15 PM
PALO (18+)	DECK 10, AFT	6:00 PM - 8:30 PM
PETE'S BOILER BITES	DECK 9, AFT	6:00 PM - 9:30 PM
TIANA'S PLACE	DECK 3, AFT	5:45 PM & 8:15 PM
TRITON'S	DECK 3, MID	5:45 PM & 8:15 PM

### LATE NIGHT SNACKS

CROWN & FIN PUB (18+ AFTER 9:00 PM)	DECK 3, FWD	10:30 PM - 11:30 PM
PINOCCHIO'S PIZZERIA	DECK 9, MID	9:30 PM - 12:00 AM
PROMENADE LOUNGE	DECK 3, AFT	10:30 PM - 11:30 PM

### ADDED FEATURES

BEVERAGE STATION	DECK 9, AFT, PORT SIDE	24 HOURS
EYE SCREAM	DECK 9, MID	12:00 PM - 3:30 PM 4:30 PM - 11:00 PM
ROOM SERVICE	DIAL 4330	OPENS AT 1:30 PM

### ENTERTAINMENT - LOUNGES - BARS

Adults must be 21 and older to consume alcoholic beverages.

AZURE (18+ AFTER 9:00 PM)	DECK 3, FWD	7:30 PM - 1:30 AM
CADILLAC LOUNGE (18+)	DECK 3, FWD	6:00 PM - 12:00 AM
COVE CAFE (18+)	DECK 9, MID	11:45 AM - 12:00 AM
CROWN & FIN PUB (18+ AFTER 9:00 PM)	DECK 3, FWD	12:00 PM - 12:00 AM
D LOUNGE	DECK 4, MID	SHOWTIMES
PINOCCHIO'S PIZZERIA	DECK 9, MID	11:45 AM - 12:00 AM
PRELUDES	DECK 4, FWD	5:30 PM - 9:30 PM
PROMENADE LOUNGE	DECK 3, AFT	11:45 AM - 12:00 AM
SIGNALS (18+)	DECK 9, FWD	11:45 AM - 10:30 PM
SULLEY'S SIPS	DECK 9, MID	11:45 AM - 6:00 PM

Public Health Advisory: Consuming raw or under-cooked meats, poultry, seafood, shellfish, or eggs may increase your risk for food borne illness, especially if you have certain medical conditions.

Disney CRUISE LINE.  
**PORT ADVENTURES**

Explore and more with our carefully selected  
Port Adventures. Visit the Port Adventures Desk,  
Deck 3, Midship to find out more.

## IMPORTANT NUMBERS

Fire/Security: 7-3001  
Medical EMERGENCY: 7-3000  
Health Center: 7-1927