

VOYAGE NAVIGATOR



SUNDAY
JANUARY 14, 2018

TO

SUNDAY
JANUARY 21, 2018

CRUISE HIGHLIGHTS

SUNDAY

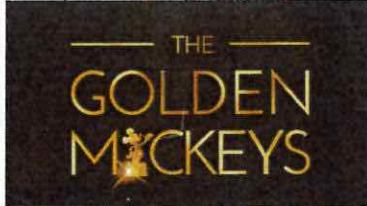
SAN JUAN
Port Departure: 6:00 pm
All Aboard: 5:00 pm
Attire: Cruise Casual



BE OUR GUEST - WELCOME ABOARD SHOW
Walt Disney Theatre
6:15 pm & 8:30 pm

MONDAY

ST. JOHN'S, ANTIGUA
All Ashore: 9:00 am
All Aboard: 4:45 pm
Attire: Formal



THE GOLDEN MICKEYS
Walt Disney Theatre
6:15 pm & 8:30 pm

TUESDAY

CASTRIES, ST. LUCIA
All Ashore: 8:00 am
All Aboard: 5:30 pm
Attire: Cruise Casual



SHOWTIME: JUNNK
Walt Disney Theatre
6:15 pm & 8:30 pm

WEDNESDAY

DAY AT SEA
Attire: Semi Formal

THURSDAY

WILLEMSTAD, CURACAO
All Ashore: 8:00 am
All Aboard: 4:45 pm
Attire: Pirate or Cruise Casual

FRIDAY

ORANJESTAD, ARUBA
All Ashore: 8:00 am
All Aboard: 1:00 am
Attire: Cruise Casual

SATURDAY

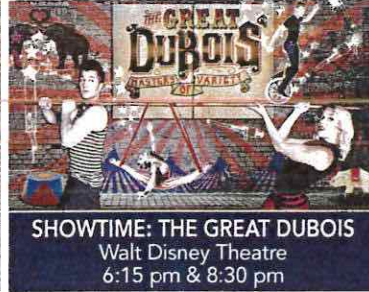
DAY AT SEA
Attire: Cruise Casual



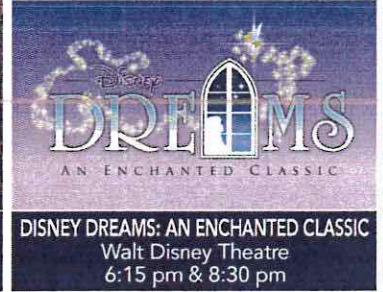
FROZEN, A MUSICAL SPECTACULAR
Walt Disney Theatre
6:00 pm & 8:30 pm



COCO - (PG)
Walt Disney Theatre
5:30 pm & 8:00 pm



SHOWTIME: THE GREAT DUBOIS
Walt Disney Theatre
6:15 pm & 8:30 pm



DISNEY DREAMS: AN ENCHANTED CLASSIC
Walt Disney Theatre
6:15 pm & 8:30 pm

Subject to change.

WELCOME ABOARD!

YOUR STATEROOM & LUGGAGE

Staterooms will be ready at 1:30 pm. To allow your Stateroom Host/ess time to prepare your room, please do not remove the blue stanchion straps. Stateroom hosts will deliver luggage throughout the day until 5:30 pm.

STATEROOMS WITH BUNK BEDS

Bunk beds are recessed into the ceiling and will be prepared during evening turndown service by your Stateroom Host/ess.

STATEROOM SAFE

Each stateroom is equipped with a secured storage safe. Instructions for use are located on the safe.

TO CHANGE DINING ASSIGNMENT

Requests for different seating times will be taken today:

- 12:30 pm - 3:30 pm; Book in Promenade Lounge, Deck 3, Aft or please dial 7-10891 and leave a voicemail.

PALO DINING RESERVATIONS

Reservations are required and will be taken on a first come basis today:

- 12:30 pm - 3:30 pm; Book in Promenade Lounge, Deck 3, Aft or please dial 7-6843 and leave a voicemail.

Adult Exclusive Dining Opportunity! Guests are invited to make 2 dinner reservations at our adult-exclusive restaurant, Palo. This includes one reservation on embarkation evening and one more on another night of the cruise. Reservations are subject to availability and a specialty dining charge will apply.

DINNER

5:45 pm - First seating 8:15 pm - Second seating

Please check your Key To The World Card for details of your dining rotation, and bring them to your specific dining location. There is no need to wait in line prior to dinner. Dining Rooms open at designated seating times and your table is reserved each night of your cruise.

AP = Animator's Palate, Deck 4, Aft TR = Triton's, Deck 3, Midship TP = Tiana's Place, Deck 3, Aft



Create the most memorable experiences during your Disney Cruise Line vacation with Port Adventures! Our Port Adventures are designed for you to see the best our ports have to offer. Stop by the Port Adventures Desk, Deck 3, Midship where our friendly team will be happy to assist you plan your adventure!

There is an adventure for everyone on your Disney Wonder® vacation.

IMPORTANT NUMBERS

Fire/Security: 7-3001

Medical Emergency: 7-3000

Health Center: 7-1927

ADULT ACTIVITY HIGHLIGHTS



1820 SOCIETY (GUESTS 18-20 YEARS ONLY)
1820 Society is an exclusive option for young adult Guests. Come meet fellow passengers and learn about the excellent activities that the Disney Wonder offers to create the perfect cruise experience.



80'S FLASHBACK
The 80's are back! Join your Cruise Staff team, in testing your 80's knowledge in this high energy 80's revival.



ANYONE CAN COOK
Every Chef has a specialty, and ours is no exception. Get a taste of perfection with each recipe.

ART OF THE THEME SHOW TOUR

Join us for a guided tour highlighting the design, Imagineering and artistry of the ship. This tour is reserved for Guests 18 and over.

CRUISIN' SOLO GATHERING

Single, single parent or just traveling alone? Join your Cruise Staff for an informal gathering.



DISNEY INNOVATIONS
Take part in our presentation on the 'Top 10' innovations presented by the Walt Disney Company.



MATCH YOUR MATE
It's time to play everyone's favorite couples game show, Match Your Mate!



Senses Spa & Salon has a variety of seminars and fitness classes available throughout the cruise. Pamper yourself with therapeutic spa treatments of heat, steam, rain and water in luxurious and tranquil private rooms. Deck 9, Forward.

BEVERAGE SEMINARS

Your Beverage team has a host of tastings and seminars to entertain and educate you. Stop by Promenade Lounge, Deck 3, Aft to pre-book these experiences (nominal fee applies).

Mixology - Stem to Stern Wine Tasting - Martini Tasting - Champagne Tasting
Beer Tasting - Cognac Tasting - Whisky Tasting
Tequila & Margarita Tasting - Chocolate & Liquor Tasting - Rum Tasting

FEATURED VARIETY ACTS THIS VOYAGE



THE COMEDY AND MAGIC OF NICK DIFFATTE
Nick Diffatte is quickly becoming one of the most-talked about comedic magicians with a seamless blend of dry humor, quick wit, and incredible skill. He has performed at Magic Castle, The Late Late Show, and had a long-term residency on the Las Vegas strip.



THE PERCUSSION & COMEDY OF JUNNK
JunNk use bins, bottles, ladders and drainpipes to create a lively, hilarious and utterly enthralling fast paced show, providing a fresh outlook on today's modern entertainment scene.



THE PHYSICAL COMEDY OF THE GREAT DUBOIS
The Great DuBois is a fast-paced, all ages, variety show showcasing incredible feats of juggling, hula hoops, unicycle, aerial, circus stunts, contortion, magic, and audience interaction all wrapped in a blanket of comedy. Viktoria Grimm is an award winning fifth-generation circus performer & Michael DuBois has been featured on The Tonight Show with Jay Leno, Late Night with David Letterman, and has been seen at over 600 colleges, cruise ships, theaters, and fairs all over the world.



THE MAGIC & COMEDY OF DAVID WILLIAMSON
Considered to be one of the world's most talented magicians, David Williamson dazzles audiences with a unique and delightful brand of entertainment, blending heart stopping magic with side splitting hilarity. David is an international award-winning magician. David has also served as an illusion consultant for both David Copperfield and David Blaine.

FUN FOR ALL AGES HIGHLIGHTS



ADVENTURES AWAY
Earn your status as V.I.P. sailors as your Cruise Director, your Disney Pals, and the Cruise Staff officially begin your "Adventures Away".



A PIRATES LIFE FOR ME
Calling all Pirates, we be! If ye have an adventurous spirit or pirate savvy, come spin the "Wheel of Destiny" for a treasure trove of fun be ripe for the takin' in this action packed pirate game show.



DISNEY JUNIOR PIRATE & PRINCESS DANCE PARTY
Calling all Pirates and Princesses! Come join us for a family dance party featuring music and fun activities from Jake & the Neverland Pirates and Sofia the First. Whether you favor tiaras or treasure chests, there's something for you at our Disney Junior Pirate & Princess Dance Party!



DISNEY VACATION CLUB GROUP PREVIEW
Join us for our interactive group presentation to learn about taking magical vacations year after year! For more information, please see a Disney Vacation Club Cast Member on Deck 4, Midship, or call 7-2805 from your stateroom phone.



FAMILY SUPERSTAR KARAOKE
Join your Cruise Staff and sing along to your favorite song, fun for everyone.



FAMILY TALENT SHOW SIGN UP
Pre-register at the Port Adventures Desk, Deck 3, Midship. Let your family take center stage and strut their stuff. Everyone has a talent, it's time to show off yours! Pre-register at the Port Adventures Desk.



JACK-JACK'S INCREDIBLE DIAPER DASH
Calling all baby cruisers! It's time to take to the mat to see who's the fastest crawler of the seven seas! Register your baby 15 minutes prior to the big race.



JACKPOT BINGO
CASH prizes and raffle prizes to be won in our family friendly Bingo sessions with your Cruise Staff. Those under the age of 18 must be accompanied by an adult to play!



MICKEY 200
Don't eat your vegetables... race them in this wild and wacky charge to the finish line. May the best veggie win! (Limited Availability)



MICKEY MANIA
Join us for the ultimate test of your Disney knowledge as we play our live, interactive game show, that's "insania!"



PIRATES IN THE CARIBBEAN DECK PARTY
Yer Disney Friends are all set for a swashbucklin' good time! It's a Pirate Celebration, me hearties! Hoist yourself to Deck 9 to enjoy a rowdy buccaneer bash we call Pirates IN the Caribbean Deck Party.



SO YOU THINK YOU KNOW YOUR FAMILY?
This fun-filled family game show is always full of surprises. Find out how well you know, or don't know your family!



WAKE UP WITH DISNEY JUNIOR
What happens when you experience unlimited fun with your favorite Disney Junior shows? You get an exciting dance party designed especially for preschoolers ages seven and under.



WHO WANTS TO BE A MOUSEKETEER?
Your chance to get into the "hot seat" and win limited edition prizes. Or, play along as part of our live studio audience.



YOUTH ACTIVITIES INFO & HIGHLIGHTS



Dine & Play

A convenience for families dining at 8:15 pm, our Youth Activities counselors will be available at 9:15 pm at the entrance of Triton's, Tiana's Place and Animator's Palate dining rooms to bring registered children to join the fun in the Youth Activities areas.

Pre-School Fun

Disney's Oceaneer Club is reserved for only those between 3-5 years of age. This is a time for them to become acclimated to Disney's Oceaneer Club, make new friends and join in on a lot of fun-filled programs and activities. Please note after Pre-School Fun has concluded, Disney's Oceaneer Club will be open for Secured Programming for ages 3-12.

Youth Activities Open House

Open House is an opportunity for all to come and participate in a variety of exciting activities and free time in the Oceaneer Club, Oceaneer Lab, Edge and Vibe throughout the cruise. During these times secured programming will still be offered in the other venue for those looking to check their children into care.

Youth Activities Venue Tour

Come and take a tour of Disney's Oceaneer Club and Disney's Oceaneer Lab. This informative tour will give you the information you need to know about our exciting spaces and activities offered for children ages 3-12. Please see your Personal Navigator or the Navigator App for times.



3 - 12 years old

JOIN THE LION GUARD

Harness your inner animal and find out if you have what it takes to join the Lion Guard!

MILES' COSMIC EXPLORER ADVENTURES

Miles needs your help! Gadfly has stolen his tech, and it's up to you to solve clues and puzzles in order to return the missing items back to Miles:

SOFIA THE FIRST - MAGICAL STORYTELLING

You're invited to take part in Sorcery 101 at the Royal Prep Academy, where you'll learn a few spells and help retell one of Sofia's many magical adventures.



3 - 12 years old

LAVA FLOW

Build your own volcano and watch it erupt as you learn about the physics of volcanoes.

MAKE A SHOW DISNEY STYLE

OPEN CALL - kids needed for a fun, one of a kind, make it your own show. Working in teams you'll have everything you need to make your own show in 90 minutes or less. Whether you're a Beauty or a Beast, you're sure to have fun!

PISTON CUP CHALLENGE

It's Dinoco time and you're part of the pit crew! Design your own race car and see if you've got what it takes to end up in the winner's circle!



11 - 14 years old

HEROES AND VILLAINS

Join your favorite hero or villain team on a series of activities that will take place throughout the cruise.

DESCENDANT'S DEN DJ SPIN OFF

Photo Booth! DJ lessons! Fun games! Sing! Laugh! Dance! It's the next generation of fun - Descendants style!



14 - 17 years old

GOTCHA

You will try to eliminate your victim by various methods collecting points throughout the day, last person standing with the most points wins.

THAT'S HILARIOUS

Ever wanted to show off your comedy skills? Then be a part of the cast for the crazy improv show "That's Hilarious" and put on a live show for your friends.

BUENA VISTA THEATRE

Deck 5, Aft

FEATURE MOVIES THIS VOYAGE

SUNDAY - SAN JUAN

5:00 pm PG-13 Guardians of the Galaxy Vol. 2
8:15 pm PG-13 Guardians of the Galaxy Vol. 2
11:00 pm PG Beauty and the Beast (2017)

MONDAY - ST. JOHN'S, ANTIGUA

8:30 am PG-13 Star Wars: The Last Jedi
12:00 pm G Cars 3
2:30 pm PG-13 Thor: Ragnarok
5:15 pm PG Beauty and the Beast (2017)
8:15 pm PG Beauty and the Beast (2017)
11:00 pm PG-13 Star Wars: The Last Jedi

TUESDAY - CASTRIES, ST. LUCIA

8:30 am PG Beauty and the Beast (2017)
11:15 am PG-13 Star Wars: The Last Jedi
2:30 pm PG-13 Guardians of the Galaxy Vol. 2
5:30 pm PG-13 Pirates of the Caribbean: Dead Men Tell No Tales
8:15 pm PG-13 Pirates of the Caribbean: Dead Men Tell No Tales
10:45 pm G Cars 3

WEDNESDAY - DAY AT SEA

9:00 am G Cars 3
11:30 am PG-13 Thor: Ragnarok
2:15 pm PG-13 Star Wars: The Last Jedi
5:15 pm PG-13 Thor: Ragnarok
8:30 pm PG-13 Thor: Ragnarok
11:00 pm PG-13 Star Wars: The Last Jedi

THURSDAY - WILLEMSTAD, CURACAO

8:30 am PG-13 Guardians of the Galaxy Vol. 2
11:30 am PG Beauty and the Beast (2017)
2:30 pm PG-13 Thor: Ragnarok
5:30 pm G Cars 3
8:30 pm G Cars 3
11:00 pm PG-13 Pirates of the Caribbean: Dead Men Tell No Tales

FRIDAY - ORANJESTAD, ARUBA

9:00 am PG Coco
11:15 am PG-13 Pirates of the Caribbean: Dead Men Tell No Tales
2:00 pm PG-13 Star Wars: The Last Jedi
5:30 pm PG Coco
8:30 pm PG Coco
10:45 pm PG-13 Thor: Ragnarok

SATURDAY - DAY AT SEA

9:00 am G Family Movie Fun Time: Cars 3
11:15 am PG-13 Star Wars: The Last Jedi
2:15 pm PG Coco
4:45 pm PG-13 Star Wars: The Last Jedi
8:00 pm PG-13 Star Wars: The Last Jedi
11:00 pm PG Coco

Subject to change.

MORE TO ENJOY ONBOARD

NEW SPRING 2019 ITINERARIES

New Spring 2019 Itineraries announced! Set sail for favorite tropical destinations as Disney Cruise Line will return to The Bahamas, Caribbean and even Baja cruises! Visit the Disney Vacation Planning desk, Deck 4, Midship for more information. Disney Vacation Planning tends to get busy on the last day of sailing. Don't miss the opportunity to plan your next Disney vacation.

DISNEY VACATION CLUB® GROUP PREVIEW

Join us for our interactive group presentation to learn about taking magical vacations year after year! For more information, please see a Disney Vacation Club Cast Member on Deck 4, Midship, or call 7-2805 from your stateroom phone.

PORT SHOPPING INFORMATION

Join Celia, your Port Shopping Guide, for the Port Shopping Talk on San Juan, Buena Vista Theatre, Deck 5, Aft, at 3:00 pm. Visit the Port Shopping Desk, Deck 3, Midship from 7:00 pm - 8:30 pm for a complimentary cruise ship charm and to pick up extra raffle tickets for a chance to win a Diamond Pendant at the Port Shopping Talk. Tune into Channel 24-6 all cruise long for all of your Port Shopping information.

Connect@Sea

FREE INTERNET EMBARKATION DAY SPECIAL

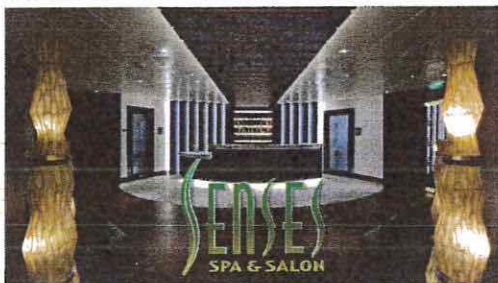
Sign up for a free 50 MB Internet package today and enjoy it throughout the cruise! This offer is only available from noon to midnight on the day your cruise begins. On your wireless device, simply find the "DCL-Guest" Wi-Fi Network, go to www.dclguest.com to create an account, and get your free 50 MB of data to start sharing your memories even before you leave port! If you have any questions, ask our Connect@Sea Expert located at Deck 3, Midship. No purchase necessary. The free 50 MB package can only be used for the duration of the cruise. Only one free package per stateroom, but everyone can share it. Unused data from a package will not be reimbursed and it is non-transferable between voyages or ships.

RELIGIOUS SERVICES

Groups who need a location to practice their faith may contact Guest Services for availability information.



SENSES SPA & SALON



DECK 9, FORWARD Extension 7-1465

RAINFOREST

Come enjoy our serenity lounge, with heated chairs, dry sauna, aromatherapy steam rooms and rainfall, misting showers.

7 Day Pass: Couples \$193 Single \$144

REJUVENATION SPA CONSULTATIONS

Ready to enhance your natural beauty? Book your free Facial Rejuvenation consultation with our Rejuvenation Dr. at the Senses Spa.

ONBOARD ACUPUNCTURE

Acupuncture is a safe and effective medicine that allows your body to heal itself, and is effective for various health conditions. See your onboard Acupuncturist for your free consultation.

IONITHERMIE

Lose between 1 – 8 inches? Speed up your metabolism. Firm muscle tone.

Improve appearance of cellulite. \$155/1 session or \$299/3 sessions.

MERCHANDISE SHOPPING



DECK 4, FORWARD

EFFY JEWELRY

Known for their bold designs, Effy jewelry is meticulously crafted with every design overseen by its founder, who plays a key role in the journey of each piece. A stylish collection of Effy jewelry pieces is now available onboard and are waiting for you to discover them in White Caps, Deck 4, Forward.

COLLECT YOUR DISNEY CRUISE LINE MEMORIES

Store the many happy memories you've photographed while on your Disney Cruise inside a 2018 Disney Cruise Line photo album and scrapbook, available in Mickey's Mainsail.

BIBBIDI BOBBIDI BOUTIQUE

A makeover fit for a princess! Fairy Godmothers-in-Training are ready with magic and pixie dust to give your Prince and Princess the transformation of a lifetime. Make your reservations by visiting Bibbidi Bobbidi Boutique, Deck 10, Forward, Port Side, or dialing extension 7-10878. Limited space available.

THE DISNEY PARKS COLLECTION BY PANDORA JEWELRY

The Disney Parks Collection by PANDORA Jewelry features hand-finished .925 sterling silver and 14K gold charms inspired by some of Disney's most beloved characters. Visit White Caps on Deck 4, Forward, where you'll find a specially designed sterling silver charm featuring a Disney Cruise Line ship.

SHUTTERS PHOTO GALLERY



DECK 4, AFT

WELCOME ABOARD RAFFLE

View your embarkation photos in Shutters, Deck 4, Aft and enter our raffle for a chance to win a 10 Digital Photos valued at \$149.95. Winner must be present at the 10:00 pm drawing in Shutters, Deck 4, Aft. *Terms and conditions apply. Visit Shutters on Deck 4, Aft for more information.

GET THE PICTURE!

Take home all your stateroom photos from this cruise on a USB! Terms and conditions apply. Visit Shutters on Deck 4, Aft and ask your friendly Shutters staff for more information. Get The Picture! Hurry! Order yours now.

PHOTO BOOK

Turn your magical vacation memories into an impressive keepsake with a personalized PhotoBook. Order by 9:30 pm on the final night of the cruise.

PRIVATE STUDIO PORTRAITURE

Book our contemporary black and white Private Studio experience today and capture these memories. No obligation to purchase.

PHOTOS ARE AVAILABLE FOR VIEWING ON OUR INTERACTIVE PHOTO KIOSKS APPROXIMATELY FIVE HOURS AFTER BEING TAKEN AND ARE ONLY AVAILABLE FOR PURCHASE DURING THIS CRUISE.

AN 18% AUTO GRATUITY IS ADDED TO ALL SENSES SPA SERVICES.

DUE TO PORT REGULATIONS, WHEN THE SHIP IS DOCKED, THE STORES WILL REMAIN CLOSED.

IMPORTANT INFORMATION

Security Notice

All Guests (including children) who wish to disembark the ship are required to present their Key to the World card at the gangway. A photo ID is also required for those Guests who are 18 years of age or older. Guests under the age of 18 are required to have a parent, guardian or other responsible adult sign an authorization form at the Guest Service Desk if they wish to go ashore unaccompanied or with any adult from another stateroom.

Inclement Weather

For the safety of all Guests, outdoor events may be changed due to unforeseen weather conditions.

Insect Repellent Advisory

The Centers for Disease Control and Prevention recommends wearing long-sleeved shirts and pants along with insect repellent to protect against mosquito bites and related illnesses when going ashore. Complimentary insect repellent is available on the pier as you exit the ship. Insect repellent is also available for purchase in White Caps. When using both sunscreen and insect repellent, use sunscreen first and apply insect repellent on top of sunscreen.

Corridor Quiet Hours

As a courtesy to all our Guests, please recognize quiet hallway hours from 10:00 pm til 8:00 am.

Environmental Message

With Disney's commitment to the Environment, please refrain from throwing anything over the Ship's side. Thank you!

No Reserved Seats Policy

As a courtesy to all our Guests, we kindly advise that the saving of seats is not permitted in the Walt Disney Theatre, and the saving of the sun loungers is not permitted on Deck 9 and 10. Items left unattended will be returned to lost and found at Guest Services, Deck 3 Midship.

Cold and Flu Reminder

Please wash hands frequently and thoroughly, particularly before meals. Contact the Health Center by dialing 7-1927, should anyone in your party become ill.

Smoking

For the comfort of our Guests, the following areas are designated as smoking areas: *Deck 9, Forward, Port Side *Deck 4, Starboard side from 6:00 pm to 6:00 am only (all of Deck 4 is non-smoking from 6:00 am to 6:00 pm) Smoking is prohibited inside all Guest staterooms and on stateroom verandahs. Guests found smoking in their staterooms or on their verandahs will be charged a \$250 stateroom recovery fee. Electronic cigarettes may only be used in designated smoking areas.

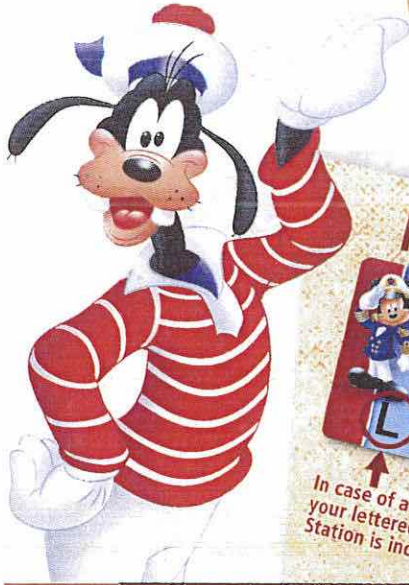
Walt Disney Theatre

Theatrical performances may use artificial fog, strobe lights, pyrotechnics and other special effects. For the safety of our performers and the comfort of those around you, the use of any photography, video recording device or any electronic equipment is prohibited.

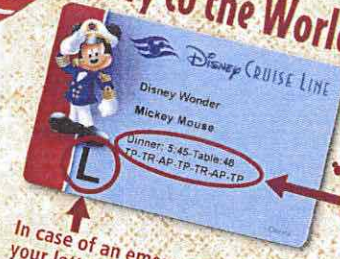
Verandah Safety

Please do not leave any personal items on your verandah that may be blown overboard or present a fire hazard if left unattended. Guests should not sit, lean or climb on the railing or leave children unattended on the verandah. Do not open the verandah and stateroom doors simultaneously as this may create a wind effect and could cause the doors to slam unexpectedly.

WELCOME ABOARD!



Key to the World Card Information



In case of an emergency, your lettered Assembly Station is indicated here.

- Dinner seatings are 5:45 pm or 8:15 pm.
- Your table number for the cruise is located after your dinner seating.
- Dinner locations and rotation are indicated by letters under your dinner time.
 AP - Animator's Palate, Deck 4, Aft
 TR - Triton's, Deck 3, Midship
 TP - Tiana's Place, Deck 3, Aft

FAMILY DECK PARTY

Earn your status as V.I.P. sailors as your Cruise Director, Ashley, your Disney Pals, and the Cruise Staff officially begin your "Adventures Away".

Deck 9 Stage, 4:45 pm

DRINK OF THE DAY
 Bay Breeze (Alcoholic)
 Princess Delight (Non-Alcoholic)

Afternoon	1:45	2:00	2:15	2:30	2:45	3:00	3:15	3:30	3:45	4:00	4:15	4:30	4:45	5:00	5:15	5:30	5:45	6:00	6:15	6:30	6:45
FUNNEL VISION	The Princess and the Frog (G) Open Captioning Funnel Vision												Adventures Away Deck 9 Stage		The Hunchback of Notre Dame (G) Funnel Vision						
BUENA VISTA THEATRE	Port Shopping Talk												Guardians of the Galaxy Vol. 2 (PG-13) Duration: 2 Hours 16 Minutes								
CHARACTERS	Join the Lion Guard Oceaneer Club												Pluto Lobby Atrium (P)								
FUN FOR ALL AGES	Walking Ship Tour Preludes												Disney Songs with O&A Duo Promenade Lounge		Walt Disney Theatre						
ADULTS	Spa Open House Senses Spa Fitness Center												Cruisin' Solo Gathering Cove Cafe		NFL NFC Divisional Playoffs: New Orleans Saints vs Minnesota Vikings Crown & Fin Pub (Subject to Satellite Availability)						
VIBE 14-17 YEARS OLD	Youth Activities Open House												Youth Activities Open House		Open for Teens						
EDGE 11-14 YEARS OLD	Youth Activities Open House												Youth Activities Open House		Open for Tweens						
OCEANEER LAB 3-12 YEARS OLD	Youth Activities Open House												Youth Activities Open House & Registration		Ice Breakers						
OCEANEER CLUB 3-12 YEARS OLD	Open House Join the Lion Guard												Youth Activities Open House		Youth Activities Open House & Registration Pre-School Fun (3-5 Years Old)						

Mandatory Guest Assembly Drill 4:15 pm

(All Guests must attend)

All ship services will be suspended during this time.

Refer to the posted drill instructions on the back of your stateroom door prior to heading to Deck 4. Please bring your Key to the World Card.

You will not need your life jacket for the Guest Assembly Drill.

Your Assembly Station is indicated on your Key To the World card.

Fold along the dotted lines and take the with you so you don't miss any of the fun!

Disney WONDER

Evening	7:00	7:15	7:30	7:45	8:00	8:15	8:30	8:45	9:00	9:15	9:30	9:45	10:00	10:15	10:30	10:45	11:00	11:15	11:30	11:45	12:00	
FUNNEL VISION	Frozen Fever (G) Funnel Vision												Pete's Dragon (PG) Funnel Vision		Tomorrowland (PG) Funnel Vision							
BUENA VISTA THEATRE	Guardians of the Galaxy Vol. 2 (PG-13) Duration: 2 Hours 16 Minutes												Beauty and the Beast (2017) (PG) Duration: 2 Hours 9 Minutes									
CHARACTERS	Minnie Lobby Atrium (P)												Minnie Lobby Atrium (P)		Mickey Lobby Atrium (P)							
FUN FOR ALL AGES	Family Dance Party Promenade Lounge												D Lounge		Walt Disney Theatre		D Lounge		D Lounge		D Lounge	
ADULTS	Songs from Today with Aaron Lotzow Cadillac Lounge												80's & 90's Music with O&A Duo Promenade Lounge		Greatest Hits with O&A Duo Promenade Lounge		The Feud Azure		Wonder Quest Azure		Cruise Staff DJ Azure	
VIBE 14-17 YEARS OLD	Meet Your Counselors												Ninja		Profiles		Ice Breakers		The Download		Ultimate Challenge	
EDGE 11-14 YEARS OLD	Wii Challenge												Profiles		Ice Breakers		Taking it to The Edge		Ninja		Heroes and Villains	
OCEANEER LAB 3-12 YEARS OLD	Meet Your Counselors												Wii Challenge		Oceaneer Rangers		Lava Flow		Go Fetch			
OCEANEER CLUB 3-12 YEARS OLD	Go Fetch												Welcome Party		Craft Corner		Once Upon a Time		Game Challenge		MARVEL Super Hero Academy Avengers Assemble	

A non-secured program with activities for families, adults and children to enjoy together.



Be our Guest!

WELCOME ABOARD SHOW
Featuring



The Comedy & Magic of
Nick Diffatte



The Percussion
& Comedy of
JunNk

WALT DISNEY THEATRE

Deck 4, Forward
6:15 pm & 8:30 pm

As a courtesy to all Guests, we kindly advise that the saving of seats is not permitted in the Walt Disney Theatre.

Assistance is available at the entrance to the Walt Disney Theatre 30 minutes prior to show time.

Character Meet & Greet Ticket Distribution

Port Adventures Desk, Deck 3, Midship - 12:00 pm - 2:00 pm

For Guests who did not reserve meet and greets online, a limited number of tickets are available today to meet some of your favorite Disney friends.

Princess Gathering ~ Frozen Meet and Greet

VIP Character Breakfast

Tickets are required for each of these meet and greets.

Space is limited.

Character Appearances

JOIN THE LION GUARD

Disney's Oceaneer Club
2:00 pm

ADVENTURES AWAY

Deck 9 Stage - 4:45 pm

PLUTO

Lobby Atrium (P) - 5:30 pm

MINNIE MOUSE

Lobby Atrium (P) - 7:15 pm
& 9:30 pm

MICKEY MOUSE

Lobby Atrium (P) - 7:45 pm
& 10:00 pm



(S) Starboard Side - (P) Port Side

For details of daily Disney character appearances, refer to the character line on your Navigator Grid, or the digital character board in the Lobby Atrium.

Lines close 15 minutes after advertised start time.

SHIP DIRECTORY

YOUTH ACTIVITIES

DISNEY'S OCEANEER CLUB	DECK 5, MID	12:30 PM - 3:45 PM 4:45 PM - 12:00 AM
DISNEY'S OCEANEER LAB	DECK 5, MID	12:30 PM - 3:45 PM 4:45 PM - 12:00 AM
EDGE	DECK 9, MID	12:30 PM - 3:45 PM 4:45 PM - 12:00 AM
IT'S A SMALL WORLD NURSERY	DECK 5, AFT	12:30 PM - 3:45 PM 5:30 PM - 11:00 PM
VIBE	DECK 10, MID	12:30 PM - 3:45 PM 4:45 PM - 12:00 AM

POOLS

Children under 12 years of age must have adult supervision in all pools.

AQUALAB	DECK 9, AFT	12:00 PM - 3:30 PM 4:30 PM - 6:00 PM
DORY'S REEF	DECK 9, AFT	12:00 PM - 3:30 PM 4:30 PM - 6:00 PM
GOOFY'S POOL	DECK 9, MID	12:00 PM - 3:30 PM 6:00 PM - 10:00 PM
QUIET COVE POOL (18+)	DECK 9, FWD	12:00 PM - 3:30 PM 4:30 PM - 11:00 PM
TWIST N' SPOUT	DECK 9, AFT	12:00 PM - 3:00 PM 4:30 PM - 6:00 PM

Please note, "selfie sticks" are not permitted in any aquatic area.
Complimentary pool vests are available for children to use in the pools onboard.
They are located on the pool deck.

RECREATION

CHILL SPA	DECK 9, FWD	12:00 PM - 10:00 PM
PORT ADVENTURES DESK	DECK 3, MID	12:00 PM - 3:30 PM 4:30 PM - 10:00 PM
SENSES FITNESS CENTER (18+)	DECK 9, FWD	12:00 PM - 10:00 PM
WIDE WORLD OF SPORTS DECK	DECK 10, FWD	12:00 PM - 3:30 PM 2:30 PM - 11:59 PM

GENERAL INFORMATION

BUENA VISTA THEATRE	DECK 5, AFT	SHOWTIMES
CONNECT@SEA DESK	DECK 3, AFT	1:00 PM - 4:00 PM 7:00 PM - 10:00 PM
DISNEY VACATION CLUB DESK	DECK 4, MID	5:00 PM - 10:00 PM
DISNEY VACATION PLANNING DESK	DECK 4, MID	7:00 PM - 8:00 PM
FUNNEL VISION	DECK 9, MID	SHOWTIMES
GUEST SERVICES	DECK 3, MID	24 HOURS
HAIR BRAIDING	DECK 9, MID	2:30 PM - 3:30 PM
MEDICAL HEALTH CENTER	DECK 1, FWD	4:30 PM - 7:00 PM
PORT SHOPPING DESK	DECK 3, MID	7:00 PM - 8:30 PM
PRELUDES	DECK 4, FWD	5:30 PM - 9:30 PM
SENSES SPA AND SALON	DECK 9, FWD	12:00 PM - 10:00 PM
SHUTTERS PHOTO GALLERY	DECK 4, AFT	6:00 PM - 10:30 PM
WALT DISNEY THEATRE	DECK 4, FWD	SHOWTIMES

SHOPPING

ART GALLERY	DECK 4, MID	7:00 PM - 9:00 PM
BIBBIDI BOBBIDI BOUTIQUE	DECK 10, FWD	12:00 PM - 3:00 PM 5:00 PM - 9:00 PM
MICKEY'S MAINSAIL	DECK 4, FWD	6:30 PM - 11:00 PM
SEA TREASURES	DECK 3, FWD	7:00 PM - 10:00 PM
WHITE CAPS	DECK 4, FWD	6:30 PM - 11:00 PM

EVENING ATTIRE Cruise Casual

WEATHER FORECAST Today: Partly Sunny
High: 82°F/28°C

DINING & LOUNGES

LUNCH

CABANAS	DECK 9, AFT	12:00 PM - 3:00 PM
DAISY'S DE LITES	DECK 9, AFT	12:00 PM - 3:30 PM 4:30 PM - 7:00 PM
PINOCCHIO'S PIZZERIA	DECK 9, MID	12:00 PM - 3:30 PM 4:30 PM - 6:00 PM
PETE'S BOILER BITES	DECK 9, AFT	12:00 PM - 3:30 PM 4:30 PM - 6:00 PM
TRITON'S	DECK 3, MID	11:45 AM - 1:30 PM

DINNER

ANIMATOR'S PALATE	DECK 4, AFT	5:45 PM & 8:15 PM
PALO (18+)	DECK 10, AFT	6:00 PM - 8:30 PM
PETE'S BOILER BITES	DECK 9, AFT	6:00 PM - 9:30 PM
TIANA'S PLACE	DECK 3, AFT	5:45 PM & 8:15 PM
TRITON'S	DECK 3, MID	5:45 PM & 8:15 PM

LATE NIGHT SNACKS

PINOCCHIO'S PIZZERIA	DECK 9, MID	9:30 PM - 12:00 AM
PROMENADE LOUNGE	DECK 3, AFT	10:30 PM - 12:00 AM

ADDED FEATURES

BEVERAGE STATION	DECK 9, AFT, PORT SIDE	24 HOURS
EYE SCREAM	DECK 9, MID	12:00 PM - 3:30 PM 4:30 PM - 11:00 PM
ROOM SERVICE	DIAL 4330	OPENS AT 1:30 PM

ENTERTAINMENT - LOUNGES - BARS

Adults must be 21 and older to consume alcoholic beverages.

AZURE (18+ AFTER 9:00 PM)	DECK 3, FWD	7:30 PM - 1:30 AM
CADILLAC LOUNGE (18+)	DECK 3, FWD	6:00 PM - 12:00 AM
COVE CAFE (18+)	DECK 9, MID	11:45 AM - 12:00 AM
CROWN & FIN PUB (18+ AFTER 9:00 PM)	DECK 3, FWD	11:45 AM - 12:00 AM
D LOUNGE	DECK 4, MID	SHOWTIMES
PINOCCHIO'S PIZZERIA	DECK 9, MID	11:45 AM - 12:00 AM
PRELUDES	DECK 4, FWD	5:30 PM - 9:30 PM
PROMENADE LOUNGE	DECK 3, AFT	11:45 AM - 12:00 AM
SIGNALS (18+)	DECK 9, FWD	11:45 AM - 11:30 PM
SULLY'S SIPS	DECK 9, MID	11:30 AM - 6:00 PM

Public Health Advisory: Consuming raw or under-cooked meats, poultry, seafood, shellfish, or eggs may increase your risk for food borne illness, especially if you have certain medical conditions.



Explore and more with our carefully selected Port Adventures. Visit the Port Adventures Desk, Deck 3, Midship to find out more.

IMPORTANT NUMBERS

Fire/Security: 7-3001
Medical EMERGENCY: 7-3000
Health Center: 7-1927