

VOYAGE NAVIGATOR



MONDAY
NOVEMBER 27, 2017

TO

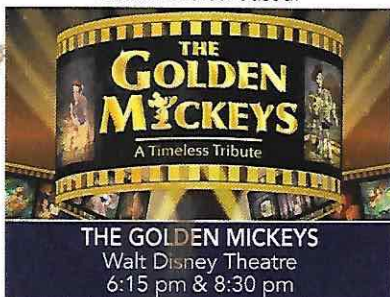
FRIDAY
DECEMBER 1, 2017

CRUISE HIGHLIGHTS

MONDAY

PORT CANAVERAL

Port Departure: 5:00 pm
All Aboard: 3:45 pm
Attire: Cruise Casual

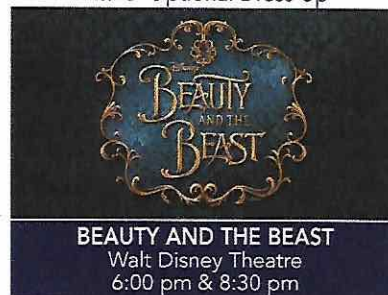


THE GOLDEN MICKEYS
Walt Disney Theatre
6:15 pm & 8:30 pm

TUESDAY

NASSAU

All Ashore: 9:30 am
All Aboard: 5:15 pm
Attire: Optional Dress Up

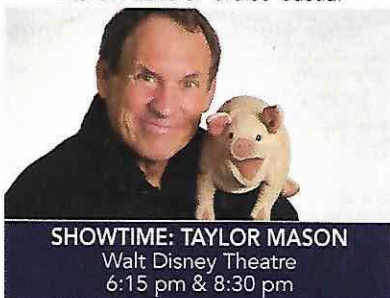


BEAUTY AND THE BEAST
Walt Disney Theatre
6:00 pm & 8:30 pm

WEDNESDAY

DISNEY CASTAWAY CAY

All Ashore: 8:30 am
All Aboard: 4:45 pm
Attire: Pirate or Cruise Casual

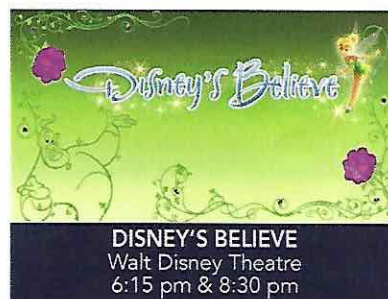


SHOWTIME: TAYLOR MASON
Walt Disney Theatre
6:15 pm & 8:30 pm

THURSDAY

DAY AT SEA

Attire: Cruise Casual



DISNEY'S BELIEVE
Walt Disney Theatre
6:15 pm & 8:30 pm

Subject to change.

WELCOME ABOARD!

YOUR STATEROOM & LUGGAGE

Staterooms will be ready at 1:30 pm. To allow your Stateroom Host/ess time to prepare your room, please do not remove the blue stanchion straps. Stateroom hosts will deliver luggage throughout the day until 6:00 pm.

STATEROOMS WITH BUNK BEDS

Bunk beds are recessed into the ceiling and will be prepared during evening turndown service by your Stateroom Host/ess.

STATEROOM SAFE

Each stateroom is equipped with a secured storage safe. Instructions for use are located on the safe.

TO CHANGE DINING ASSIGNMENT

Requests for different seating times will be taken today:

1:00 pm - 3:30 pm; Book in Royal Palace, Deck 3, Midship
3:30 pm - 5:00 pm; please dial 7-1831, 7-1832, or 7-1833

REMY & PALO DINING RESERVATIONS

Reservations are required and will be taken on a first come basis today:

1:00 pm - 3:30 pm; Royal Palace

Please dial 7-9734 for Remy or 7-9735 for Palo for more information. Cover charge applicable.

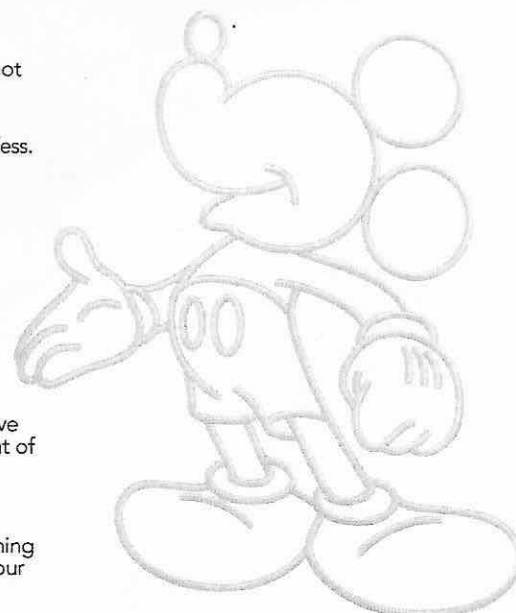
Adult Exclusive Dining Opportunity! Guests are invited to make 2 dinner reservations at our two adult-exclusive restaurants, Palo & Remy. This includes one reservation on embarkation evening and one more on another night of the cruise. Reservations are subject to availability and a specialty dining charge will apply.

DINNER

5:45 pm - First seating 8:15 pm - Second seating

Please check your Key To The World Card for details of your dining rotation, and bring them to your specific dining location. There is no need to wait in line prior to dinner. Dining Rooms open at designated seating times and your table is reserved each night of your cruise.

A = Animator's Palate, Deck 3, Aft E = Enchanted Garden, Deck 2, Midship R = Royal Palace, Deck 3, Midship



Create the most memorable experiences during your Disney Cruise Line vacation with Port Adventures! Our Port Adventures are designed for you to see the best our ports have to offer. Stop by the Port Adventures Desk, Deck 5, Midship where our friendly team will be happy to assist you plan your adventure!

There is an adventure for everyone on your Disney Dream® vacation.

IMPORTANT NUMBERS

Fire/Security: 7-3001

Medical Emergency: 7-3000

Health Center: 7-1927

ADULT ACTIVITY HIGHLIGHTS



1820 SOCIETY (GUESTS 18-20 YEARS ONLY)
1820 Society is an exclusive option for young adult guests. Come meet fellow passengers and learn about the excellent activities that the Dream offers to create the perfect cruise experience.



80'S MUSIC CHALLENGE
"Moon Walk" back to the 80's as we put your musical knowledge of the decade to the test.

CRUISIN' SOLO GATHERING

Single, single parent or just traveling alone? Join your Cruise Staff for an informal gathering.



KRAZY KARAOKE
Take to the stage, grab a microphone and sing your favorite tunes with your Club Host and DJ.



MAKING OF THE DREAM
Explore the origins of Disney Cruise Line and the latest and greatest innovations conjured especially for the Disney Dream in this fascinating and entertaining behind-the-scenes program.



MATCH YOUR MATE
It's time to play everyone's favorite couples game show, Match Your Mate!

VARIETY ACT

Featuring the Ventriloquism, Comedy, and Magic of Taylor Mason, as he entertains you in this adult exclusive show.

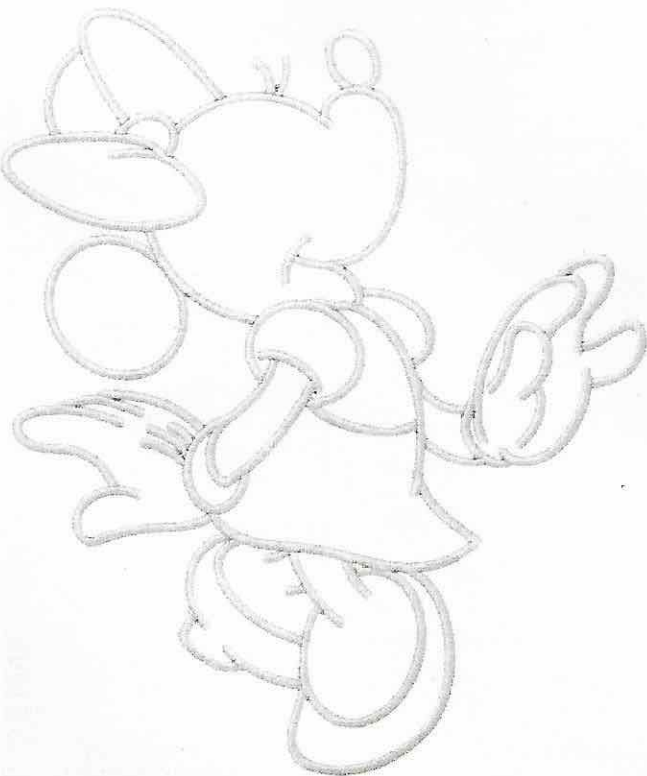


Senses Spa & Salon has a variety of seminars and fitness classes available throughout the cruise. Pamper yourself with therapeutic spa treatments of heat, steam, rain and water in luxurious and tranquil private rooms. Deck 11, Forward.

BEVERAGE SEMINARS

Your Beverage team has a host of tastings and seminars to entertain and educate you. Stop by Guest Services Deck 3, Midship to pre-book these experiences. (nominal fee applies).

Whiskey Tasting - Stem to Stern Wine Tasting - Martini Tasting
Cognac Tasting - Tequila & Margarita Tasting - Mixology



FUN FOR ALL AGES HIGHLIGHTS



ANYONE CAN COOK
Every Chef has a specialty, and ours is no exception. Get a taste of perfection with each day's recipe.



A PIRATES LIFE FOR ME
Calling all Pirates, we be! If ye have an adventurous spirit or pirate savvy, come spin the "Wheel of Destiny" fer a treasure trove of fun be ripe for the takin' in this action packed pirate game show.



BUCCANEER BLAST FIREWORKS
What's a pirate party without some fireworks to remind the other ships who be ruling the oceans blue? (Weather Permitting)



CASTAWAY CAY 5K (10+)
Sign up today for the Castaway Cay 5K! Please visit the Port Adventures Desk or the Guest Services Desk to register at anytime prior to our arrival at Disney Castaway Cay. Please note that runners must be 10 years of age or older to participate.



DISNEY JUNIOR PIRATE & PRINCESS DANCE PARTY
Calling all Pirates and Princesses! Come join us for a family dance party featuring music and fun activities from Jake & the Neverland Pirates and Sofia the First. Whether you favor tiaras or treasure chests, there's something for you at our Disney Junior Pirate & Princess Dance Party!



DISNEY VACATION CLUB GROUP PREVIEW
Join us as we welcome you onboard with a fun, interactive event where you can catch the latest updates at Disney Vacation Club! Please see a Disney Vacation Club Cast Member on Deck 4, Midship or call 7-2805 from your stateroom phone for more information.



FAMILY FUSION
Bring the entire family and test your Disney knowledge in the high-tech interactive game show, Family Fusion.



JACK-JACK'S INCREDIBLE DIAPER DASH
Calling all baby cruisers! It's time to take to the mat to see who's the fastest crawler of the seven seas! Register your baby 15 minutes prior to the big race.



JACKPOT BINGO
CASH prizes and raffle prizes to be won in our family friendly Bingo sessions with your Cruise Staff. Those under the age of 18 must be accompanied by an adult to play.



MICKEY'S PIRATES IN THE CARIBBEAN
It's a Pirate Celebration, me hearties! Come experience all the pirate fun alongside Captain Mickey Mouse and his famous pirate crew. Play, dance and acquire all the pirate skills needed to become an official member of Mickey's Pirate Crew! (Weather Permitting)



MICKEY'S TREE LIGHTING MAGIC
Come gather in the ship's atrium to experience this magical Disney Cruise Line holiday tradition. Join Mickey and the gang for a holiday sing along as a family of dreamers helps us create a little Disney magic by lighting our holiday tree.



MIRROR MIRROR
Head to D Lounge for the fairest game show of them all, Mirror Mirror. Featuring the Magic Mirror and everyone's favorite dwarf, Dopey.



SALUDOS AMIGOS FIESTA
Come see what Donald and his friends are up to this time. Bring the family out to this interactive dance party featuring fun Latin music! Your family will learn to salsa, merengue and just have a Latin good time!



SANTA'S WINTER WONDERLAND BALL
Join your Cruise Director as we celebrate the arrival of a very special holiday Guest - Santa Claus! Get your cameras ready. You don't want to miss Santa and the World Famous Disney Characters as they create a Winter Wonderland...at sea!



SO YOU THINK YOU KNOW YOUR FAMILY?
This fun-filled family game show is always full of surprises. Find out how well you know, or don't know your family!

YOUTH ACTIVITIES INFO & HIGHLIGHTS



Dine & Play

A convenience for families dining at 8:15 pm, our Youth Activities counselors will be available at 9:15 pm at the entrance of Royal Palace, Enchanted Garden and Animator's Palate dining rooms to bring registered children to join the fun in the Youth Activities areas.

Pre-School Fun

Disney's Oceaneer Club is reserved for only those between 3-5 years of age. This is a time for them to become acclimated to Disney's Oceaneer Club, make new friends and join in on a lot of fun-filled programs and activities. Please note after Pre-School Fun has concluded, Disney's Oceaneer Club will be open for Secured Programming for ages 3-12.

Youth Activities Open House

Open House is an opportunity for all to come and participate in a variety of exciting activities and free time in the Oceaneer Club, Oceaneer Lab, Edge and Vibe throughout the cruise. During these times secured programming will still be offered in the other venue for those looking to check their children into care.

Youth Activities Venue Tour

Come and take a tour of Disney's Oceaneer Club and Disney's Oceaneer Lab. This informative tour will give you the information you need to know about our exciting spaces and activities offered for children ages 3-12. Please see your Personal Navigator or the Navigator App for times.



3 - 12 years old

MICKEY'S PUZZLE PLAYTIME

Come and play with Mickey & friends as they share their favorite games, puzzles and dances!

TOY STORY BOOT CAMP

Join Corporal Green in our own version of boot camp as we learn how to have fun - The Toy Story way!

JEDI TRAINING: EXPERIENCE THE FORCE

Become one with the Force as you take your first step into a larger world.



3 - 12 years old

SUPER SLOPPY SCIENCE

Join Professor Make-O-Mess in some of the most extreme experiments you will ever see in the world of Super Sloppy Science!

PISTON CUP

It's Dinoco time and you're part of the pit crew! Design your own race car and see if you've got what it takes to end up in the winner's circle!

PLUTO'S PAJAMA PARTY

Bring the little ones in their pajamas but there will be anything but sleep when Pluto and friends host the ultimate slumber party!

STITCH'S ADVENTURE SQUAD

Stitch, everyone's favorite alien, is making an appearance to share some of his mischievous games and activities.



11 - 14 years old

HEROES VS. VILLAINS

Join your favorite hero or villain team on a series of activities that will take place throughout the cruise.

THAT'S HILARIOUS

Ever wanted to show off your comedy skills? Then be a part of the cast for the crazy improv show "That's Hilarious" and put on a live show for your friends.



14 - 17 years old

GOTCHA

You will try to eliminate your victim by various methods collecting points throughout the day, last person standing with the most points wins.

VIBE MOVIE MAKERS

Ready! Set! ACTION! Come learn the skill of movie making as only Disney can do it. Whether you're on screen or behind the camera you're sure to have fun making a one-of-a-kind movie based on the best of Disney.

BUENA VISTA THEATRE

Deck 4 & 5, Midship

FEATURE MOVIES THIS VOYAGE

MONDAY - PORT CANAVERAL

5:30 pm	G	Cars 3	
8:00 pm	G	Cars 3	
10:15 pm	PG	Coco	

TUESDAY - NASSAU

11:45 am	PG-13	Thor: Ragnarok	
2:30 pm	G	Cars 3	
5:30 pm	PG	Coco	
8:00 pm	PG	Coco	
10:30 pm	PG	Beauty and the Beast (2017)	

WEDNESDAY - DISNEY CASTAWAY CAY

8:30 am	PG	Family Movie Fun Time: Coco	
10:45 am	PG-13	Thor: Ragnarok	
1:45 pm	G	Cars 3	
5:15 pm	PG	Beauty and the Beast (2017)	
8:00 pm	PG	Beauty and the Beast (2017)	
10:45 pm	PG-13	Thor: Ragnarok	

THURSDAY - DAY AT SEA

8:30 am	PG	Coco	
11:15 am	PG-13	Thor: Ragnarok	
3:00 pm	PG	Coco	
5:15 pm	PG-13	Thor: Ragnarok	
8:00 pm	PG-13	Thor: Ragnarok	
11:00 pm	PG	Coco	

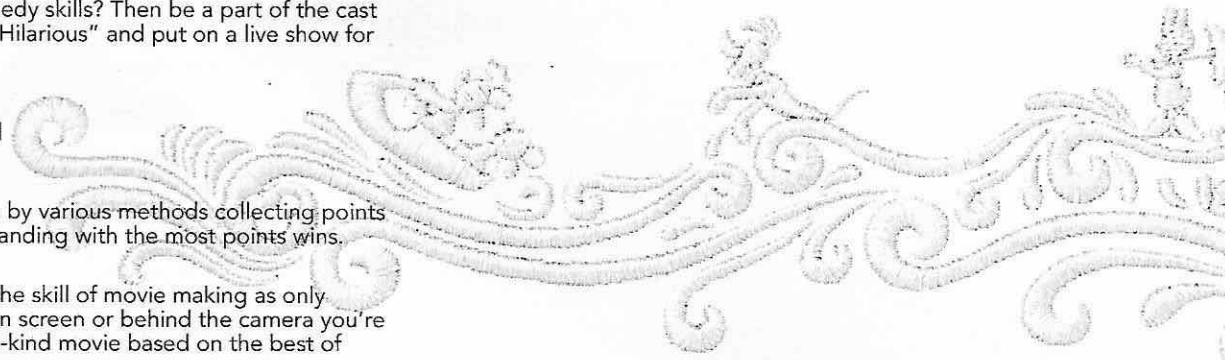
Subject to change.

FEATURED VARIETY ACT THIS VOYAGE



THE VENTRILOQUISM, COMEDY, AND MAGIC OF TAYLOR MASON

Combining music, ventriloquism, comedy and audience participation sounds like a musical theater production. But it's really one man, Taylor Mason. He makes people of all ages laugh and laugh hard. His quick wit, flawless delivery & polished material make him a hit with guests of all ages. Taylor brings it all together in a performance that can be enjoyed by everyone.



MORE TO ENJOY ONBOARD



NEW SPRING 2019 ITINERARIES

New Spring 2019 Itineraries announced! Set sail for favorite tropical destinations as Disney Cruise Line will return to The Bahamas, Caribbean and even Baja cruises! Visit the Disney Vacation Planning Center, Deck 4, Midship for more information. Disney Vacation Planning tends to get busy on the last day of sailing. Don't miss the opportunity to plan your next Disney vacation.



DISNEY VACATION CLUB® MEMBERS PREVIEW

Join us as we welcome you onboard with a fun, interactive event where you can catch the latest updates at Disney Vacation Club! Please see a Disney Vacation Club Cast Member on Deck 4, Midship or call 7-2805 from your stateroom phone for more information.



PORT SHOPPING INFORMATION

Join your Port Shopping Guides Natasa & Daniel today at 2:45 pm in the Buena Vista Theatre to learn about the incredible shopping ashore in Nassau! Over \$1,000 in give-a-ways and prizes! Arrive early for free gifts and more! Collect your free ship charm from the Port Shopping Desk, Deck 4, Midship, today from 6:00 pm - 8:00 pm.

Connect @ Sea

FREE INTERNET EMBARKATION DAY SPECIAL

Sign up for a free 50 MB Internet package today and enjoy it throughout the cruise! This offer is only available from noon to midnight on the day your cruise begins. On your wireless device, simply find the "DCL-Guest" Wi-Fi Network, go to www.dclguest.com to create an account, and get your free 50 MB of data to start sharing your memories even before you leave port! If you have any questions, ask our Connect@Sea Expert located at Deck 4, Midship. No purchase necessary. The free 50 MB package can only be used for the duration of the cruise. Only one free package per stateroom, but everyone can share it. Unused data from a package will not be reimbursed and it is non-transferable between voyages or ships.

RELIGIOUS SERVICES

Guests who need a location to practice their faith may contact Guest Services for availability information.

GINGERBREAD HOUSE MAKING

Join your Cruise Staff and our Pastry Chef as you create your own Gingerbread House. Limited availability, visit Port Adventures to sign-up!

SENSES SPA & SALON



DECK 11, FORWARD

Extension 7-1465

RAINFOREST

Come enjoy our serenity lounge, with heated chairs, dry sauna, aromatherapy steam rooms and rainfall, misting showers.

IONITHERME

Would you like to lose 3-8 inches? Speed up your metabolism, reduce fluid retention and the appearance of cellulite? Firm your muscle tone? If so, this is the best treatment for you! \$155/session.

ONBOARD ACUPUNCTURE

Naturally effective for pain, arthritis, sea sickness, stress, digestion, weight loss, and much more. \$150/session or \$360/3 sessions.

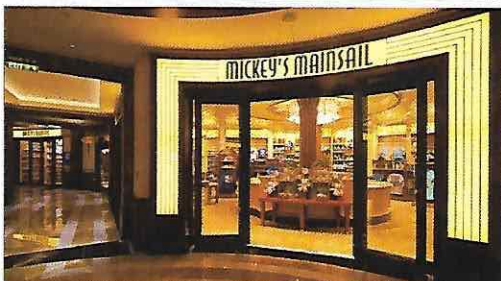
PAMPER PACKAGE

Pamper Package: 50 minute full body massage, Foot & Ankle Massage, Scalp Massage & Hydrating Facial. 75 minute treatment - \$149.

REJUVENATION SPA CONSULTATIONS

Ready to enhance your natural beauty? Book your free Facial Rejuvenation consultation with our Rejuvenation Doctor at the Senses Spa.

MERCHANDISE SHOPPING



DECK 3, FORWARD

CELEBRATE THE HOLIDAYS ONBOARD DISNEY CRUISE LINE!

Adorn your tree this year with festive holiday ornaments designed especially for Disney Cruise Line. Available at Sea Treasures.

STAND OUT FROM THE CROWD!

TAG Heuer is one of the largest and fastest growing Swiss brands in a constant quest for innovation and high precision. Stop by White Caps today where you'll discover the luxury and style that is TAG Heuer. White Caps, Deck 3, Forward.

GUESS THE CARAT WEIGHT

Correctly guess the carat weight of our Tanzanite ring to qualify to win a special prize at White Caps, Deck 3, Forward. Winners will be announced at 7:30 pm on Thursday. Must be present to win. Restrictions apply. Subject to change without notice.

BIBBIDI BOBBIDI BOUTIQUE

A makeover fit for a princess! Fairy Godmothers-in-Training are ready with magic and pixie dust to give your Prince and Princess the transformation of a lifetime. Make your reservations by visiting Bibbidi Bobbidi Boutique, Deck 5, Midship or dialing extension 7-9438. Limited space available.

SHUTTERS PHOTO GALLERY



DECK 4, MIDSHIP

OUR CRUISE PHOTOS

View your embarkation photos starting at 7:00pm at Shutters, Deck 4, Midship and enter our raffle for a chance to win a 10 Digital Images Photo USB worth \$149.95. Raffle entries are accepted until 10:30 pm tonight. *Terms and conditions apply.

Visit Shutters on Deck 4, Midship for all your photographic needs, from digital cameras, batteries, binoculars and accessories.

Ask a friendly photographer about Our Cruise Photos and the incredible value of an unlimited digital photo package, which includes all of your stateroom's photos.

PROFESSIONAL PORTRAITS

Professional portraits will be available during your cruise in the Lobby Atrium, Deck 3, Midship. Please refer to your daily personal Navigator for available hours.

PHOTO BOOK

Visit Shutters today and turn your magical vacation memories into an impressive keepsake, a personal one-of-a-kind Photo Book. Fill every page with memories of your cruise vacation.

PHOTOS ARE AVAILABLE FOR VIEWING ON OUR INTERACTIVE PHOTO KIOSKS APPROXIMATELY FIVE HOURS AFTER BEING TAKEN AND ARE ONLY AVAILABLE FOR PURCHASE DURING THIS CRUISE.

AN 18% AUTO GRATUITY IS ADDED TO ALL SENSES SPA SERVICES.

DUE TO PORT REGULATIONS, WHEN THE SHIP IS DOCKED, THE STORES WILL REMAIN CLOSED.

IMPORTANT INFORMATION

Security Notice

All Guests (including children) who wish to disembark the ship are required to present their Key to the World card at the gangway. A photo ID is also required for those Guests who are 18 years of age or older. Guests under the age of 18 are required to have a parent, guardian or other responsible adult sign an authorization form at the Guest Service Desk if they wish to go ashore unaccompanied or with any adult from another stateroom.

Inclement Weather

For the safety of all Guests, outdoor events may be changed due to unforeseen weather conditions.

Insect Repellent Advisory

The Centers for Disease Control and Prevention recommends wearing long-sleeved shirts and pants along with insect repellent to protect against mosquito bites and related illnesses when going ashore. Complimentary insect repellent is available on the pier as you exit the ship. Insect repellent is also available for purchase in White Caps. When using both sunscreen and insect repellent, use sunscreen first and apply insect repellent on top of sunscreen.

Corridor Quiet Hours

As a courtesy to all our Guests, please recognize quiet hallway hours from 10:00 pm til 8:00 am.

Environmental Message

With Disney's commitment to the Environment, please refrain from throwing anything over the Ship's side. Thank you!

No Reserved Seats Policy

As a courtesy to all our Guests, we kindly advise that the saving of seats is not permitted in the Walt Disney Theatre, and the saving of the sun loungers is not permitted on Deck 11, 12, and 13. Items left unattended will be returned to lost and found at Guest Services, Deck 3 Midship.

Cold and Flu Reminder

Please wash hands frequently and thoroughly, particularly before meals. Contact the Health Center by dialing 7-1927, should anyone in your party become ill.

Smoking

For the comfort of our Guests, the following areas are designated as smoking areas:
 *Deck 13, forward, port side by Currents
 *Deck 12, aft, port side outdoor area that is accessible through the Meridian Lounge
 *Deck 4, aft, port side from 6:00 pm to 6:00 am only (all of Deck 4 is non-smoking from 6:00 am to 6:00 pm)
 Smoking is prohibited inside all Guest staterooms and on stateroom verandahs. Guests found smoking in their staterooms or on their verandahs will be charged a \$250 stateroom recovery fee. Electronic cigarettes may only be used in designated smoking areas.

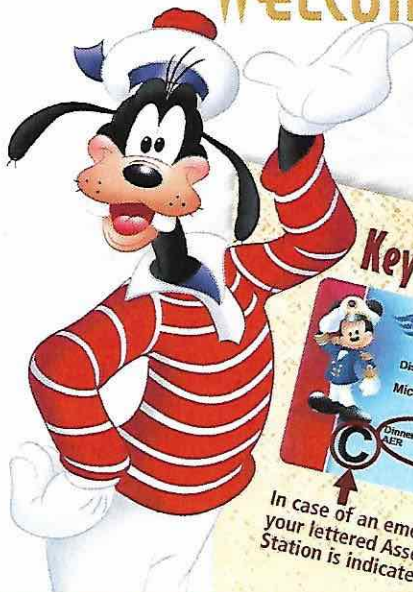
Walt Disney Theatre

Theatrical performances may use artificial fog, strobe lights, pyrotechnics and other special effects. For the safety of our performers and the comfort of those around you, the use of any photography, video recording device or any electronic equipment is prohibited.

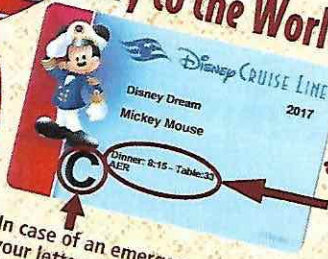
Verandah Safety

Please do not leave any personal items on your verandah that may be blown overboard or present a fire hazard if left unattended. Guests should not sit, lean or climb on the railing or leave children unattended on the verandah. Do not open the verandah and stateroom doors simultaneously as this may create a wind effect and could cause the doors to slam unexpectedly.

WELCOME ABOARD!



Key to the World Card Information



In case of an emergency, your lettered Assembly Station is indicated here.

- ♥ Dinner seatings are 5:45 pm or 8:15 pm.
- ♥ Your table number for the cruise is located after your dinner seating.
- ♥ Dinner locations and rotation are indicated by letters under your dinner time.
 - A - Animator's Palate, Deck 3, Aft
 - E - Enchanted Garden, Deck 2, Midship
 - R - Royal Palace, Deck 3, Midship

SAILING AWAY

It's time to go Sailing Away! Join Mickey and Minnie and the rest of the gang as they welcome you aboard the Disney Dream.

Deck Stage, Deck 11, Midship, 4:30 pm

Bahama Mama (Alcoholic)
Passion Cream Freeze (Non-Alcoholic)
DRINK OF THE DAY

Afternoon	1:45	2:00	2:15	2:30	2:45	3:00	3:15	3:30	3:45	4:00	4:15	4:30	4:45	5:00	5:15	5:30	5:45	6:00	6:15	6:30	6:45	
FUNNEL VISION	Frozen (PG) Open Captioning Funnel Vision												Sailing Away Funnel Vision		Big Hero 6 (PG) Open Captioning Funnel Vision							
BUENA VISTA THEATRE					Port Shopping Talk																	
CHARACTERS			Once Upon A Time Disney's Oceaneer Club										Sailing Away Deck Stage		Goofy Balcony		Mickey Balcony					
FUN FOR ALL AGES	Walking Ship Tour Preludes				Disney Vacation Club Member Mixer D Lounge												Music with Supernova Duo Lobby Atrium		Red Carpet Arrivals		THE GOLDEN MICKEYS A Timeless Tribute Walt Disney Theatre	
ADULTS					Port Shopping Talk Buena Vista Theatre								Complimentary Footprint Analysis Senses Fitness Center									
	Acupuncture Demonstration Senses Fitness Center				Spa Raffle Senses Fitness Center								Posture Analysis Senses Fitness Center		Piano with Silviu Constantin Pink: Wine and Champagne Bar							
VIBE 14-17 YEARS OLD	Youth Activities Open House												Youth Activities Open House				Open for Teens		Video Game Challenge			
EDGE 11-14 YEARS OLD	Youth Activities Open House												Youth Activities Open House				Open for Tweens		GAGA Ball			
OCEANEER LAB 3-12 YEARS OLD	Youth Activities Open House & Registration		Magic Playfloor												Bingo		GAGA Ball		Meet Your Counselors		Ice Breakers	
OCEANEER CLUB 3-12 YEARS OLD	Open House & Registration		Once Upon A Time		Venue Tour		Open House & Registration								Youth Activities Open House & Registration				Little Einstein's Adventure		Star Wars	

Mandatory Guest Assembly Drill 4:00 pm

All ship services will be suspended during this time.

Please refer to the posted drill instructions prior to heading to your Assembly Station.

You will not need your life jacket for the Guest Assembly Drill.

Your Assembly Station is indicated on your Key To The World card.



Evening	7:00	7:15	7:30	7:45	8:00	8:15	8:30	8:45	9:00	9:15	9:30	9:45	10:00	10:15	10:30	10:45	11:00	11:15	11:30	11:45	12:00	
FUNNEL VISION	The Muppet Christmas Carol (PG) Funnel Vision						NFL - Houston Texans vs. Baltimore Ravens Funnel Vision (Subject to Satellite Availability)															
BUENA VISTA THEATRE					Cars 3 (G) Duration: 1 Hour 49 Minutes										Coco (PG) Duration: 1 Hour 49 Minutes							
CHARACTERS	Rapunzel Lobby Atrium		Mickey Balcony		Belle Lobby Atrium				Mickey Balcony		Minnie Balcony				Sailing Away Deck Stage							
FUN FOR ALL AGES	Music with Supernova Duo Lobby Atrium		Bingo Pre-Sales Evolution		Big X \$500 Jackpot Bingo Evolution		Game Show: The Wheel D Lounge		Red Carpet Arrivals		THE GOLDEN MICKEYS A Timeless Tribute Walt Disney Theatre		Disney Animation Creating a Character D Lounge		Family VISION D Lounge		Family KARAOKE D Lounge					
ADULTS	Movie Quotes Trivia Pub 687		Violin with Ievgenia Khalikova Pink: Wine and Champagne Bar				NFL - Houston Texans vs. Baltimore Ravens Pub 687 (Subject to Satellite Availability)		Violin with Ievgenia Pink: Wine and Champagne Bar		1820 Society Strik It, Blend It, Taste It. Cove Cafe		Music with The Vitos District Lounge		Dream Quest Evolution		The Comedy of TAYLOR MASON Evolution				Cruise Staff DJ District Lounge	
VIBE 14-17 YEARS OLD	Chillin in Vibe		GAGA Ball		Game Challenge		Foosball				Ice Breakers		The Download		Vibe Movie Makers							
EDGE 11-14 YEARS OLD	Video Game Challenge		Foosball Tournament		Game Challenge		Profiles		Taking it to The Edge		Ice Breakers		Dodgeball									
OCEANEER LAB 3-12 YEARS OLD	Magic Playfloor		Get the Hook		Animation		Pluto's Pajama Party		Four Square		GAGA Ball											
OCEANEER CLUB 3-12 YEARS OLD	Relay Games		Magic Playfloor		Toy Story Bootcamp		Game Challenge		Disney Infinity Challenge		Star Wars Galaxy Designers											

YOUTH ACTIVITIES OPEN HOUSE
A non-secured program with activities for families, adults and children to enjoy together.





THE GOLDEN MICKEYS

A Timeless Tribute

WALT DISNEY THEATRE
DECK 3 & 4, FORWARD
6:15 pm & 8:30 pm

As a courtesy to all Guests, we kindly advise that the saving of seats is not permitted in the Walt Disney Theatre.

Assistance available at the entrance to the Walt Disney Theatre 30 minutes prior to show time.

Character Meet and Greet Ticket Distribution

Port Adventures Desk, Deck 5, Midship - 11:45 am - 2:00 pm
For Guests who did not reserve Meet and Greets online, a limited number of tickets are available today to meet some of your favorite Disney friends.

- Princess Gathering
- Frozen Meet and Greet

Tickets are required for each of these Meet and Greets.

Space is limited.

Character Appearances

BELLE

Balcony - 11:45 am
Lobby Atrium (V) - 8:00 pm

CINDERELLA

Balcony - 12:30 pm

SAILING AWAY

Deck 11, Stage - 4:30 pm

GOOFY

Balcony - 5:15 pm

MINNIE MOUSE

Lobby Atrium (V) - 5:30 pm
Lobby Atrium (H) - 7:45 pm & 9:30 pm

MICKEY MOUSE

Balcony - 5:45 pm, 8:00 pm & 9:30 pm

RAPUNZEL

Lobby Atrium (V) - 7:15 pm

MICKEY'S TREE LIGHTING MAGIC

Lobby Atrium - 7:30 pm

SANTA'S WINTER WONDERLAND BALL

Lobby Atrium - 10:15 pm



(H) Hallway - (S) Starboard Side - (P) Port Side - (V) Vestibule

For details of daily Disney character appearances, refer to the character line on your Navigator Grid, or the digital character board in the Lobby Atrium. Lines close 15 minutes after advertised start time.

SHIP DIRECTORY

YOUTH ACTIVITIES

DISNEY'S OCEANEER CLUB	DECK 5, MID	5:30 PM - 12:00 AM
DISNEY'S OCEANEER LAB	DECK 5, MID	4:30 PM - 12:00 AM
EDGE	DECK 13, MID	6:00 PM - 1:00 AM
IT'S A SMALL WORLD NURSERY	DECK 5, MID	5:30 PM - 12:00 AM
VIBE	DECK 4, FWD	6:00 PM - 1:00 AM

POOLS & MORE

* Children under 12 must have adult supervision in pool areas.

AQUADUCK	DECK 12, AFT	12:00 PM - 3:00 PM
		4:30 PM - 10:00 PM
DONALD'S POOL	DECK 11, MID	12:00 PM - 3:15 PM
		6:00 PM - 10:00 PM
FUNNEL PUDDLE	DECK 12, FWD	12:00 PM - 6:00 PM
MICKEY'S POOL	DECK 11, MID	12:00 PM - 3:15 PM
		4:30 PM - 10:00 PM
MICKEY'S SLIDE	DECK 11, MID	12:00 PM - 3:15 PM
		4:30 PM - 6:00 PM
NEMO'S REEF	DECK 11, MID	12:00 PM - 3:15 PM
		4:30 PM - 6:00 PM
QUIET COVE POOL (18+)	DECK 11, FWD	12:00 PM - 11:00 PM
SATELLITE FALLS (18+)	DECK 13, FWD	12:00 PM - 8:00 PM

Please note, "selfie sticks" are not permitted in any aquatic area.

Complimentary pool vests are available for children to use in the pools onboard. Located on the pool deck.

RECREATION

GOLF/SPORTS SIMULATOR	DECK 13, AFT	12:00 PM - 3:15 PM
		4:30 PM - 6:00 PM
GOOFLY GOLF	DECK 13, AFT	5:30 PM - 10:00 PM
GOOFLY'S SPORTS DECK	DECK 13, AFT	12:00 PM - 6:00 PM
MIDSHIP DETECTIVE AGENCY	DECK 2 & 5, MID	11:00 AM - 11:00 PM
PORT ADVENTURES DESK	DECK 5, MID	12:00 PM - 3:30 PM
		4:30 PM - 10:00 PM
SENSES FITNESS CENTER (18+)	DECK 11, FWD	12:00 PM - 10:00 PM

GENERAL INFORMATION

BUENA VISTA THEATRE	DECK 4 & 5, MID	SHOWTIMES
CONNECT@SEA DESK	DECK 4, MID	1:00 PM - 3:30 PM
		7:00 PM - 8:30 PM
DISNEY VACATION PLANNING CENTER	DECK 4, MID	5:00 PM - 10:00 PM
GUEST SERVICES	DECK 3, MID	24 HOURS
HAIRBRAIDING	DECK 11, MID	4:30 PM - 10:00 PM
MEDICAL HEALTH CENTER	DECK 1, FWD	4:30 PM - 7:00 PM
PORT SHOPPING DESK	DECK 4, MID	6:00 PM - 8:00 PM
PRELUDES	DECK 3, FWD	5:45 PM - 9:00 PM
SENSES SPA AND SALON	DECK 11, FWD	12:00 PM - 10:00 PM
SHUTTERS PHOTO GALLERY	DECK 4, MID	7:00 PM - 10:30 PM
WALT DISNEY THEATRE	DECK 3 & 4, FWD	SHOWTIMES

SHOPPING

BIBBIDI BOBBIDI BOUTIQUE	DECK 5, MID	12:00 PM - 3:00 PM
		5:00 PM - 9:00 PM
MICKEY'S MAINSAIL	DECK 3, FWD	5:45 PM - 11:00 PM
SEA TREASURES	DECK 3, FWD	5:45 PM - 11:00 PM
VISTA GALLERY	DECK 4, MID	6:00 PM - 10:30 PM
WHITE CAPS	DECK 3, FWD	5:45 PM - 11:00 PM
WHOZITS & WHATZITS	DECK 11, MID	12:00 PM - 3:15 PM
		4:30 PM - 6:00 PM
		9:00 PM - 11:00 PM

DUE TO PORT REGULATIONS, WHEN THE SHIP IS DOCKED, THE STORES MUST REMAIN CLOSED.

EVENING ATTIRE

Cruise Casual

WEATHER FORECAST

Today: Partly Sunny
High: 74°F/23°C

DINING & LOUNGES

LUNCH

CABANAS	DECK 11, AFT	11:45 AM - 3:00 PM
ENCHANTED GARDEN	DECK 2, MID	11:45 AM - 2:00 PM
FILLMORE'S FAVORITES	DECK 11, MID	12:00 PM - 3:30 PM
		4:30 PM - 6:00 PM
LUIGI'S PIZZA	DECK 11, MID	12:00 PM - 3:30 PM
		4:30 PM - 6:00 PM
TOW MATER'S GRILL	DECK 11, MID	12:00 PM - 3:30 PM
		4:30 PM - 6:00 PM

DINNER

ANIMATOR'S PALATE	DECK 3, AFT	5:45 PM & 8:15 PM
ENCHANTED GARDEN	DECK 2, MID	5:45 PM & 8:15 PM
PALO (18+) (RESERVATIONS REQ. & NON-FEE APPLIES)	DECK 12, AFT	6:00 PM - 8:30 PM
REMY (18+) (RESERVATIONS REQ. & NON-FEE APPLIES)	DECK 12, AFT	6:00 PM - 8:30 PM
ROYAL PALACE	DECK 3, MID	5:45 PM & 8:15 PM
TOW MATER'S GRILL	DECK 11, MID	6:00 PM - 11:00 PM

LATE NIGHT SNACKS

LUIGI'S PIZZA	DECK 11, MID	9:30 PM - 12:00 AM
THE DISTRICT	DECK 4, AFT	10:45 PM - 11:45 PM

ADDED FEATURES

BEVERAGE STATION	DECK 11, MID	24 HOURS
EYE SCREAM	DECK 11, MID	11:45 AM - 3:30 PM
		4:30 PM - 12:00 AM
ROOM SERVICE	DIAL 0	24 HOURS
VANELLOPE'S SWEETS AND TREATS	DECK 11, AFT	11:30 AM - 3:30 PM
		4:30 PM - 10:30 PM

ENTERTAINMENT - LOUNGES - BARS

Adults must be 21 and older to consume alcoholic beverages.

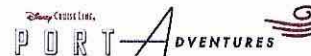
BON VOYAGE	DECK 3, MID	11:30 AM - 11:00 PM
COVE BAR (18+)	DECK 11, FWD	11:30 AM - 10:30 PM
COVE CAFE (18+)	DECK 11, FWD	11:30 AM - 12:00 AM
CURRENTS (18+)	DECK 13, FWD	11:30 AM - 12:00 AM
D LOUNGE	DECK 4, MID	SHOWTIMES
DISTRICT LOUNGE (18+ AFTER 9:00 PM)	DECK 4, AFT	11:30 AM - 2:00 AM
EVOLUTION (18+ AFTER 9:00 PM)	DECK 4, AFT	9:30 PM - 12:00 AM
FROZONE TREATS	DECK 11, MID	11:30 AM - 6:00 PM
MERIDIAN (18+)	DECK 12, AFT	5:00 PM - 12:00 AM
OUTLOOK (18+)	DECK 14, MID	
PINK: WINE AND CHAMPAGNE BAR (18+)	DECK 4, AFT	5:00 PM - 12:00 AM
PUB 687 (18+ AFTER 9:00 PM)	DECK 4, AFT	11:30 AM - 12:00 AM
SENSES JUICE BAR	DECK 11, FWD	11:30 AM - 10:00 PM
SKYLINE (18+)	DECK 4, AFT	6:00 PM - 12:00 AM
VISTA CAFE	DECK 4, MID	11:30 AM - 11:00 PM
WAVES	DECK 12, AFT	11:30 AM - 6:00 PM

Public Health Advisory: Consuming raw or under-cooked meats, poultry, seafood, shellfish, or eggs may increase your risk for food borne illness, especially if you have certain medical condition.



MIDSHIP DETECTIVE AGENCY

Use your detective know-how and our special detective "badge" to search the ship and catch your criminal! Deck 2 & 5, Midship Kiosks.



Visit the Port Adventures Desk, Deck 5, Midship, for bookings & questions.

IMPORTANT NUMBERS

Fire/Security: 7-3001
Medical Emergency: 7-3000
Health Center: 7-1927