

VOYAGE NAVIGATOR



SATURDAY
NOVEMBER 18, 2017

TO

SUNDAY
NOVEMBER 26, 2017

CRUISE HIGHLIGHTS

SATURDAY

NEW YORK

Port Departure: 5:00 pm
All Aboard: 4:00 pm
Attire: Cruise Casual



BE OUR GUEST - WELCOME ABOARD SHOW
Walt Disney Theatre
6:15 pm & 8:30 pm

SUNDAY

DAY AT SEA

Attire: Formal

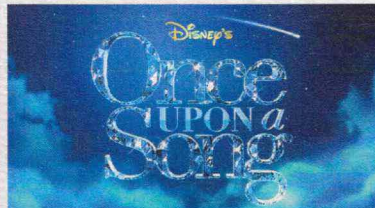


TWICE CHARMED
Walt Disney Theatre
6:15 pm & 8:30 pm

MONDAY

DAY AT SEA

Attire: Cruise Casual



ONCE UPON A SONG
Walt Disney Theatre
6:15 pm & 8:30 pm

TUESDAY

NASSAU

All Ashore: 8:00 am
All Aboard: 5:15 pm
Attire: Pirate or Cruise Casual



SHOWTIME: VOICEPLAY
Walt Disney Theatre
6:00 pm & 8:30 pm

WEDNESDAY

DISNEY CASTAWAY CAY

All Ashore: 8:30 am
All Aboard: 4:45 pm
Attire: Cruise Casual



TANGLED: THE MUSICAL
Walt Disney Theatre
6:15 pm & 8:30 pm

THURSDAY

PORT CANAVERAL

All Ashore: 7:00 am
All Aboard: 1:00 am
Attire: Cruise Casual

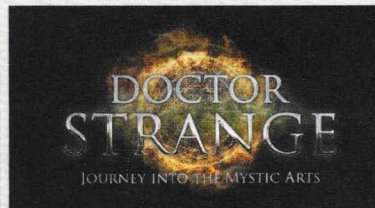


THOR: RAGNAROK - (PG-13) - 3D
Walt Disney Theatre
5:00 pm

FRIDAY

MARVEL DAY AT SEA

Attire: Marvel or Cruise Casual

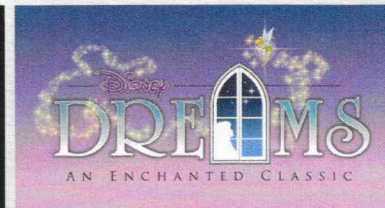


JOURNEY INTO THE MYSTIC ARTS WITH DOCTOR STRANGE
Walt Disney Theatre
3:00 pm, 4:15 pm & 6:15 pm

SATURDAY

DAY AT SEA

Attire: Cruise Casual



DISNEY DREAMS: AN ENCHANTED CLASSIC
Walt Disney Theatre
6:15 pm & 8:30 pm

Subject to change.

WELCOME ABOARD!

YOUR STATEROOM & LUGGAGE

Staterooms will be ready at 1:30 pm. To allow your Stateroom Host/ess time to prepare your room, please do not remove the blue stanchion straps. Stateroom hosts will deliver luggage throughout the day until 5:30 pm.

STATEROOMS WITH BUNK BEDS

Bunk beds are recessed into the ceiling and will be prepared during evening turndown service by your Stateroom Host/ess.

STATEROOM SAFE

Each stateroom is equipped with a secured storage safe. Instructions for use are located on the safe.

TO CHANGE DINING ASSIGNMENT

Requests for different seating times will be taken today:

- 12:30 pm - 3:00 pm; Book in Lumière's, Deck 3, Midship or please dial 7-1831 and leave a voicemail.

PALO DINING RESERVATIONS

Reservations are required and will be taken on a first come basis today:

- 12:30 pm - 3:00 pm Lumière's, Deck 3, Midship, or please dial 7-6843 and leave a voicemail.

Adult Exclusive Dining Opportunity! Guests are invited to make 2 dinner reservations at our adult-exclusive restaurant, Palo. This includes one reservation on embarkation evening and one more on another night of the cruise.

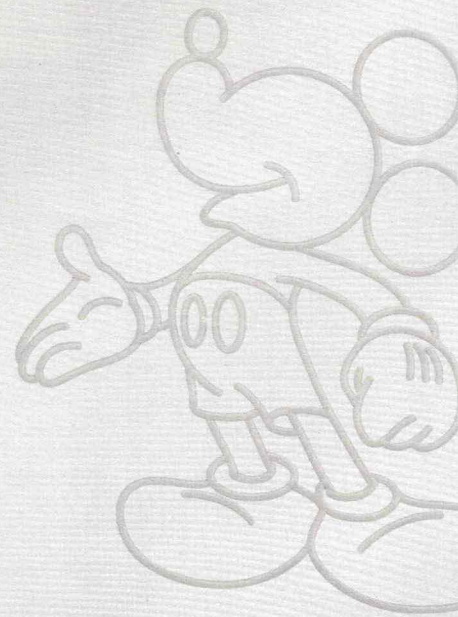
Reservations are subject to availability and a specialty dining charge will apply.

DINNER

5:45 pm - First seating 8:15 pm - Second seating

Please check your Key To The World Card for details of your dining rotation, and bring it to your specific dining location. There is no need to wait in line prior to dinner. Dining Rooms open at designated seating times and your table is reserved each night of your cruise.

A = Animator's Palate, Deck 4, Aft L = Lumière's, Deck 3, Midship C = Cariocas, Deck 3, Aft



Create the most memorable experiences during your Disney Cruise Line vacation with Port Adventures! Our Port Adventures are designed for you to see the best our ports have to offer. Stop by the Port Adventures Desk, Deck 3, Midship where our friendly team will be happy to assist you plan your adventure!

There is an adventure for everyone on your Disney Magic® vacation.

IMPORTANT NUMBERS

Fire/Security: 7-3001

Medical Emergency: 7-3000

Health Center: 7-1927

ADULT ACTIVITY HIGHLIGHTS



1820 SOCIETY (GUESTS 18-20 YEARS ONLY)

1820 Society is an exclusive option for young adult Guests. Come meet fellow passengers and learn about the excellent activities that the Disney Magic offers to create the perfect cruise experience.



80'S FLASHBACK

The 80's are back! Join your Cruise Staff team, in testing your 80's knowledge in this high energy 80's revival.



KRAZY KARAOKE

Take to the stage, grab a microphone and sing your favorite tunes with your Club Host and DJ.



MATCH YOUR MATE

It's time to play everyone's favorite couples game show, Match Your Mate!



CANVAS AND COCKTAILS - BEAUTY AND THE BEAST

Create your own Beauty and the Beast inspired painting during this adult-only event. You'll learn to paint Disney style while enjoying 3 of Disney Cruise Line's most popular cocktails. NOTE - There is a nominal fee for this event. Pre-booking required.



Senses Spa & Salon has a variety of seminars and fitness classes available throughout the cruise. Pamper yourself with therapeutic spa treatments of heat, steam, rain and water in luxurious and tranquil private rooms. Deck 9, Forward.

BEVERAGE SEMINARS

Your Beverage team has a host of tastings and seminars to entertain and educate you. Stop by Lumière's, Deck 3, Midship, 12:00 - 3:00 pm or Guest Services, Deck 3, Midship after today to pre-book these experiences (nominal fee applies).

Mixology - Stem to Stern Wine Tasting - Martini Tasting - Champagne Tasting - Beer Tasting - Cognac Tasting - Whisky Tasting - Amari Tasting - Tequila & Margarita Tasting - Chocolate & Liquor Tasting - Rum Tasting

FEATURED VARIETY ACTS THIS VOYAGE



THE MAGIC AND ILLUSION OF SHAWN FARQUHAR

Shawn Farquhar has been entertaining audiences around the globe for over two decades. What sets him apart from every other "rabbit pulling" magic act? Just that! He's not some rabbit pulling magic act. In fact he has been described as having "connected the skills of his talent with the passion in his heart". Shawn offers a show that involves the audience in an experience of magic and comedy that is unparalleled.



THE VOCALS & ACAPELLA POP STYLINGS OF VOICEPLAY

Based in Orlando, FL, VoicePlay performs their own incredible brand of entertainment across the country and around the world. What began quite literally as a street corner barbershop act has now evolved into an internationally acclaimed touring sensation. VoicePlay is unlike any theatrical experience available today, recreating the orchestrated sound of an entire musical production with nothing but the the human voice.



THE PHYSICAL COMEDY OF MARCUS MONROE

Marcus Monroe is a New York City based award winning comedian and juggler. His show is a high-energy blend of innovative juggling with in your face comedic banter riddled with awkwardness. He is the recipient of the prestigious Andy Kaufman Award and has recently appeared on The Late Show, HBO, MTV, Netflix and Comedy Central. The New York Times calls Marcus "one of the most entertaining performers to watch in New York City."

MARVEL DAY AT SEA

Unleash the hero within during a day of celebration at sea!

A full description of our exciting events will be delivered to your staterooms with the Personal Navigator, the evening before Marvel Day at Sea.

FUN FOR ALL AGES HIGHLIGHTS



A PIRATES LIFE FOR ME

Calling all Pirates, we be! If ye have an adventurous spirit or pirate savvy, come spin the "Wheel of Destiny" fer a treasure trove of fun be ripe for the takin' in this action packed pirate game show.



DISNEY VACATION CLUB GROUP PREVIEW

Want to learn more about taking magical vacations year after year? Please see a Disney Vacation Club Cast Member on Deck 4, Midship, or call 7-2805 from your stateroom phone for more information about our interactive group presentation.



FAMILY SUPERSTAR KARAOKE

Join your Cruise Staff and sing along to your favorite song, fun for everyone.



FAMILY TALENT SHOW SIGN UP

Pre-register at the Port Adventures Desk, Deck 3, Midship. Let your family take center stage and strut their stuff. Everyone has a talent, it's time to show off yours! Pre-register at the Port Adventures Desk.



FRIENDSHIP ROCKS

Come and celebrate with all the children from the Oceaneer Club and Oceaneer Lab in the Jammin' performance of Friendship Rocks! You won't want to miss any of the fun.



JACK-JACK'S INCREDIBLE DIAPER DASH

Calling all baby cruisers! It's time to take to the mat to see who's the fastest crawler of the seven seas! Register your baby 15 minutes prior to the big race.



JACKPOT BINGO

CASH prizes and raffle prizes to be won in our family friendly Bingo sessions with your Cruise Staff. Those under the age of 18 must be accompanied by an adult to play.



PIRATES IN THE CARIBBEAN DECK PARTY

Yer Disney Friends are all set for a swashbucklin' good time! It's a Pirate Celebration, me hearties! Hoist yourself to Deck 9 to enjoy a rowdy buccaneer bash we call Pirates IN the Caribbean Deck Party. (Weather Permitting)

VERY MERRYTIME HOLIDAY HIGHLIGHTS



DECK THE DECK TROPICAL HOLIDAY PARTY

How do you celebrate the Holidays when you're on a tropical cruise? Your Disney pals know how to get a holiday party started with the magic of the tropics as our background! Mele Kaliki Maka everyone!



MICKEY'S TREE LIGHTING MAGIC

Come gather in the ship's atrium to experience this magical Disney Cruise Line holiday tradition. Join Mickey and the gang for a holiday sing along as a family of dreamers helps us create a little Disney magic by lighting our holiday tree.



SANTA'S WINTER WONDERLAND BALL

An evening of spectacle and holiday enchantment, join your Cruise Director and our holiday Snowbells as we celebrate the arrival of a very special holiday guest - Santa Claus! Get your cameras ready. You don't want to miss Santa and the World Famous Disney Characters as they create a Winter Wonderland....at sea!

STORYTIME WITH MRS. CLAUUS

Full of fun and whimsy, Mrs. Claus makes a very special visit to the ship's atrium to read classic holiday tales to all the children - and children at heart!



A final chance to come together with your Disney friends and Merrytime cruisers. The children are all invited to the stairs to perform their own candlelight magic. Hugs, photos and joy will prevail!

Please check your daily Personal Navigator for all times and locations.

YOUTH ACTIVITIES INFO & HIGHLIGHTS



Dine & Play

As a convenience for families dining at 8:15 pm, our Youth Activities Counselors will be available at 9:15 pm at the entrance of Lumiere's and Carioca's and at 9:30 pm at the entrance of Animator's Palate to bring registered children to join the fun in Disney's Oceaneer Club and Disney's Oceaneer Lab.

Pre-School Fun

Disney's Oceaneer Club is reserved for only those between 3-5 years of age. This is a time for them to become acclimated to Disney's Oceaneer Club, make new friends and join in on a lot of fun-filled programs and activities. Please note after Pre-School Fun has concluded, Disney's Oceaneer Club will be open for Secured Programming for ages 3-12.

Youth Activities Open House

Open House is an opportunity for all to come and participate in a variety of exciting activities and free time in the Oceaneer Club, Oceaneer Lab, Edge and Vibe throughout the cruise. During these times secured programming will still be offered in the other venue for those looking to check their children into care.

Youth Activities Venue Tour

Come and take a tour of Disney's Oceaneer Club and Disney's Oceaneer Lab. This informative tour will give you the information you need to know about our exciting spaces and activities offered for children ages 3-12. Please see your Personal Navigator or the Navigator App for times.



3 - 12 years old

SPIDER-MAN WEB WARRIORS

Join your friendly neighborhood Spider-Man as he shows you the ins and outs on how to become a Web-Warrior!

S.H.I.E.L.D. SECRET AGENT 101

S.H.I.E.L.D.'s best secret agents, Black Widow and Hawkeye, guide you on your first steps toward becoming a S.H.I.E.L.D. secret Agent.

DISNEY ROYAL ACADEMY

Hear ye! Hear ye! All boys and girls are invited to become part of the Oceaneer Royal Court. Learn all about your favorite Disney Prince and Princesses, create your own royal garb and become one of the most powerful in the land. Disney Royal Academy is in session!



3 - 12 years old

SUPER SLOPPY SCIENCE

Join Professor Make-O-Mess in some of the most extreme experiments you will ever see in the world of Super Sloppy Science!

PLUTO'S PAJAMA PARTY

Bring the little ones in their pajamas but there will be anything but sleep when Pluto and friends host the ultimate slumber party!

PISTON CUP

It's Dinoco time and you're part of the pit crew! Design your own race car and see if you've got what it takes to end up in the winner's circle!



11 - 14 years old

HEROES VS. VILLAINS

Join your favorite hero or villain team on a series of activities that will take place throughout the cruise.

THAT'S HILARIOUS

Ever wanted to show off your comedy skills? Then be a part of the cast for the crazy improv show "That's Hilarious" and put on a live show for your friends.



14 - 17 years old

GHOST VOYAGERS

Come learn about these mysterious waters and the friendly spirits that might inhabit them.

HOMECOMING

Come and join your fellow teens in our very own version of "Homecoming" and dance the night away.

BUENA VISTA THEATRE

Deck 5, Midship

FEATURE MOVIES THIS VOYAGE

SATURDAY - NEW YORK

5:30 pm	G	Cars 3	
8:00 pm	G	Cars 3	
10:15 pm	G	Born in China	

SUNDAY - DAY AT SEA

8:30 am	G	Born in China	
12:15 pm	PG	Beauty and the Beast (2017)	
2:45 pm	PG-13	Iron Man	
5:15 pm	PG-13	Spider-Man: Homecoming	
8:15 pm	PG-13	Spider-Man: Homecoming	
11:00 pm	PG-13	Captain America: The First Avenger	

MONDAY - DAY AT SEA

8:30 am	PG	Moana
10:45 am	PG-13	Thor
1:00 pm	PG-13	Ant-Man
3:30 pm	PG-13	Dr. Strange
5:45 pm	G	Cars 3
8:00 pm	G	Cars 3
10:30 pm	PG	Beauty and the Beast (2017)

TUESDAY - NASSAU

9:15 am	G	Cars 3	
11:45 am	PG-13	Thor: The Dark World	
2:15 pm	PG-13	Spider-Man: Homecoming	
5:00 pm	PG-13	Pirates of the Caribbean: Dead Men Tell No Tales	
8:15 pm	PG-13	Pirates of the Caribbean: Dead Men Tell No Tales	
11:00 pm	PG-13	The Avengers	

WEDNESDAY - DISNEY CASTAWAY CAY

2:45 pm	PG-13	Captain America: Civil War
5:30 pm	PG	Beauty and the Beast (2017)
8:15 pm	PG	Beauty and the Beast (2017)

THURSDAY - PORT CANAVERAL

2:30 pm	PG-13	Avengers: Age of Ultron	
5:15 pm	PG-13	Captain America: Civil War	
8:00 pm	PG-13	Thor: Ragnarok	
10:45 pm	PG-13	Thor: Ragnarok	

FRIDAY - MARVEL DAY AT SEA

2:45 pm	PG-13	Guardians of the Galaxy
5:00 pm	PG-13	Guardians of the Galaxy Vol. 2
7:45 pm	PG-13	Guardians of the Galaxy Vol. 2
11:00 pm	PG-13	Thor: Ragnarok

SATURDAY - DAY AT SEA

10:30 am	G	Cars 3
3:00 pm	PG-13	Thor: Ragnarok
10:45 pm	PG-13	Thor: Ragnarok

Subject to change.

COSTUME INFORMATION

All Guests are encouraged to dress up in their own costumes for special Marvel Day at Sea, and Pirate Night; however, the following guidelines should be followed when selecting a costume:

- Masks that completely cover a person's face may only be worn when standing still at character photo locations and must be carried when moving around the ship.
- Guests should choose costumes that are family friendly, not obstructive, objectionable, offensive nor violent.
- Guests may dress as their favorite character, but may not pose for pictures or sign autographs.
- To avoid any disappointment or delay in the boarding process, Guests should refrain from bringing toys or props that resemble guns, knives or other related implements, as these items will not be allowed onboard.
- Masks are strictly prohibited during the boarding process as identity must be verified.
- Guests failing to comply with costume guidelines onboard may be removed from events unless their costume can be modified.

MORE TO ENJOY ONBOARD

NEW SPRING 2019 ITINERARIES

New Spring 2019 Itineraries announced! Set sail for favorite tropical destinations as Disney Cruise Line will return to The Bahamas, Caribbean and even Baja cruises! Visit the Disney Vacation Planning Desk, Deck 4, Midship for more information. Disney Vacation Planning tends to get busy on the last day of sailing. Don't miss the opportunity to plan your next Disney vacation.



DISNEY VACATION CLUB® GROUP PREVIEW

Want to learn more about taking magical vacations year after year? Please see a Disney Vacation Club Cast Member on Deck 4, Midship, or call 7-2805 from your stateroom phone for more information about our interactive group presentation.



PORT SHOPPING INFORMATION

Meet Saige, your Port Shopping Guide, for hints, tips and know how when it comes to shopping ashore this cruise! Saige has great recommendations for the whole family and will show you how to maximize your time in our ports of call with money saving tips! Visit Saige at the Port Shopping Desk, Deck 3, Midship.



Connect@Sea

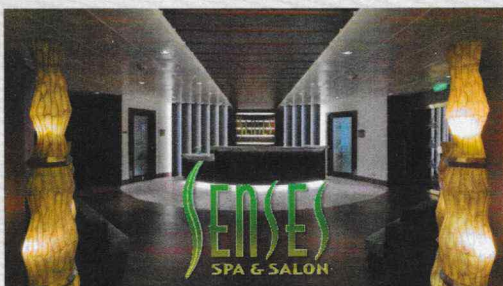
FREE INTERNET EMBARKATION DAY SPECIAL

Sign up for a free 50 MB Internet package today and enjoy it throughout the cruise! This offer is only available from noon to midnight on the day your cruise begins. On your wireless device, simply find the "DCL-Guest" Wi-Fi Network, go to www.dclguest.com to create an account, and get your free 50 MB of data to start sharing your memories even before you leave port! If you have any questions, ask our Connect@Sea Expert located at Deck 3, Midship. No purchase necessary. The free 50 MB package can only be used for the duration of the cruise. Only one free package per stateroom, but everyone can share it. Unused data from a package will not be reimbursed and it is non-transferable between voyages or ships.

RELIGIOUS SERVICES

Groups who need a location to practice their faith may contact Guest Services for availability information.

SENSES SPA & SALON



DECK 9, FORWARD

Extension 7-1465

RAINFOREST

Come enjoy our serenity lounge, with heated chairs, dry sauna, aromatherapy steam rooms and rainfall, misting showers.

Couples Cruise Pass - \$223 ~ Single Cruise Pass - \$144

IONITHERMIE

Lose between 1 - 8 inches? Speed up your metabolism. Firm muscle tone. Improve appearance of cellulite. \$155/1 session or \$388/3 sessions.

ONBOARD ACUPUNCTURE

Naturally effective for pain, arthritis, sea sickness, stress, digestion, weight loss, and much more.

\$150/session or \$550/5 sessions.

ELEMIS BIOTEC

8 different Facial treatments available based on your specific concerns or needs. Technology turbo charges the concept of touch. The clinically proven result is visibly healthy, nourished and energized skin.

REJUVENATION SPA CONSULTATIONS

Ready to enhance your natural beauty? Book your free Facial Rejuvenation consultation with our Rejuvenation Doctor at the Senses Spa.

MERCHANDISE SHOPPING



DECK 4, FORWARD

MARVEL DAY AT SEA MERCHANDISE

Head to White Caps, Deck 4, Forward, today for the extraordinary array of commemorative Marvel Day at Sea merchandise available for purchase!

HELPFUL SHOPPING TIP

While shopping onboard, you may collect your items from both stores before proceeding to checkout at any register. No need to have to wait in line in each store to pay for your items separately!

Mickey's Mainsail and White Caps, Deck 4, Forward.

BIBBIDI BOBBIDI BOUTIQUE

A makeover fit for a princess! Fairy Godmothers-in-Training are ready with magic and pixie dust to give your Prince and Princess the transformation of a lifetime. Make your reservations by visiting Bibbidi Bobbidi Boutique, Deck 10, Forward, Port Side, or dialing extension 7-1492. Limited space available.

VISTA ART GALLERY

Visit our Art Gallery on Deck 4, Midship to view a large selection of Disney art. Giclees on canvas themed pieces from Princess films to your favorite characters in a pirate style!

MARVEL SUPERHERO MERCHANDISE

Stop by Sea Treasures, Deck 3, Forward and discover exciting merchandise of some of your favorite Marvel Superheroes!

SHUTTERS PHOTO GALLERY



DECK 4, AFT

WELCOME ABOARD RAFFLE

Your embarkation photos will be available for viewing at 6:30pm. Visit Shutters on Deck 4 AFT and drop your raffle coupon for a chance to win a 10 Digital Photo package with a \$149.95 value.

OUR CRUISE PHOTOS DIGITAL!

Ask a friendly photographer about our Cruise digital Photos! And the incredible value of an All Inclusive digital photo package, which includes all of your stateroom's photos. Visit Shutters today as supplies are limited. *Terms and conditions apply.

PROFESSIONAL PORTRAITS

Your family is dressed up and ready to enjoy the evenings onboard. Capture the memories by visiting our professional portrait studios in the Lobby Atrium, Deck 3 Midship. Different backdrops available each night so be sure to visit each night.

PHOTO BOOK

Turn your magical vacation memories into an impressive keepsake, a personal one of a kind Photo Book. Fill every page with memories of your cruise vacation. Orders close at 10:00 pm on the last day of the cruise.

PHOTOS ARE AVAILABLE FOR VIEWING ON OUR INTERACTIVE PHOTO KIOSKS APPROXIMATELY FIVE HOURS AFTER BEING TAKEN AND ARE ONLY AVAILABLE FOR PURCHASE DURING THIS CRUISE.

AN 18% AUTO GRATUITY IS ADDED TO ALL SENSES SPA SERVICES.

DUE TO PORT REGULATIONS, WHEN THE SHIP IS DOCKED, THE STORES WILL REMAIN CLOSED.

IMPORTANT INFORMATION

Security Notice

All Guests (including children) who wish to disembark the ship are required to present their Key to the World card at the gangway. A photo ID is also required for those Guests who are 18 years of age or older. Guests under the age of 18 are required to have a parent, guardian or other responsible adult sign an authorization form at the Guest Service Desk if they wish to go ashore unaccompanied or with any adult from another stateroom.

Inclement Weather

For the safety of all Guests, outdoor events may be changed due to unforeseen weather conditions.

Insect Repellent Advisory

The Centers for Disease Control and Prevention recommends wearing long-sleeved shirts and pants along with insect repellent to protect against mosquito bites and related illnesses when going ashore. Complimentary insect repellent is available on the pier as you exit the ship. Insect repellent is also available for purchase in White Caps. When using both sunscreen and insect repellent, use sunscreen first and apply insect repellent on top of sunscreen.

Corridor Quiet Hours

As a courtesy to all our Guests, please recognize quiet hallway hours from 10:00 pm til 8:00 am.

Environmental Message

With Disney's commitment to the Environment, please refrain from throwing anything over the Ship's side. Thank you!

No Reserved Seats Policy

As a courtesy to all our Guests, we kindly advise that the saving of seats is not permitted in the Walt Disney Theatre, and the saving of the sun loungers is not permitted on Deck 9 and 10. Items left unattended will be returned to lost and found at Guest Services, Deck 3 Midship.

Cold and Flu Reminder

Please wash hands frequently and thoroughly, particularly before meals. Contact the Health Center by dialing 7-1927, should anyone in your party become ill.

Smoking

For the comfort of our Guests, the following areas are designated as smoking areas:
*Deck 9, Forward, Port Side by *Deck 4, aft, port side from 6:00 pm to 6:00 am only (all of Deck 4 is non-smoking from 6:00 am to 6:00 pm)
Smoking is prohibited inside all Guest staterooms and on stateroom verandahs. Guests found smoking in their staterooms or on their verandahs will be charged a \$250 stateroom recovery fee. Electronic cigarettes may only be used in designated smoking areas.

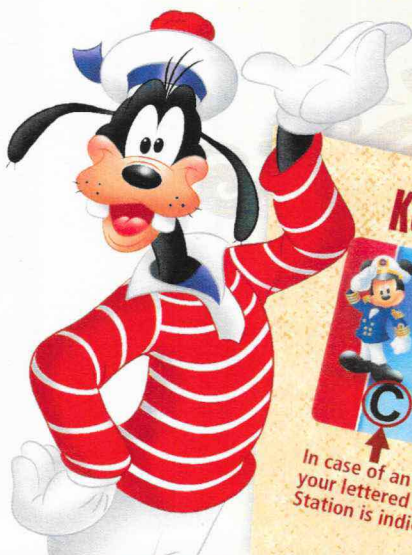
Walt Disney Theatre

Theatrical performances may use artificial fog, strobe lights, pyrotechnics and other special effects. For the safety of our performers and the comfort of those around you, the use of any photography, video recording device or any electronic equipment is prohibited.

Verandah Safety

Please do not leave any personal items on your verandah that may be blown overboard or present a fire hazard if left unattended. Guests should not sit, lean or climb on the railing or leave children unattended on the verandah. Do not open the verandah and stateroom doors simultaneously as this may create a wind effect and could cause the doors to slam unexpectedly.

WELCOME ABOARD!



Key to the World Card Information



In case of an emergency, your lettered Assembly Station is indicated here.

- Your dining time and table number for the cruise are located here.
- Dining locations and rotation are indicated by letters under your dinner time.
L - Lumiere's, Deck 3, Midship
A - Animator's Palate, Deck 4, Aft
C - Carioca's, Deck 3, Aft

ADVENTURES AWAY

Earn your status as V.I.P. sailors! Join your Cruise Director, Lesley, your Disney pals and your Cruise Staff as we officially begin your "Adventures Away."

Deck Stage, Deck 9, Midship, 4:45 pm

DRINK OF THE DAY
Paradise Punch (Alcoholic)
Lava Smoothie (Non-Alcoholic)

Afternoon	1:45	2:00	2:15	2:30	2:45	3:00	3:15	3:30	3:45	4:00	4:15	4:30	4:45	5:00	5:15	5:30	5:45	6:00	6:15	6:30	6:45			
FUNNEL VISION	Poolside Jams with Cruise Staff DJ Deck 9 Stage												Adventures Away Deck 9 Stage				Monsters, Inc. (G) Open Captioning Funnel Vision							
BUENA VISTA THEATRE																	Cars 3 (G) Duration: 1 Hour 49 Minutes							
CHARACTERS													Minnie Lobby Atrium (P)				Mickey Lobby Atrium (P)							
													Deck 9 Stage								Walt Disney Theatre			
FUN FOR ALL AGES	Walking Ship Tour Preludes		Walking Ship Tour Preludes		Youth Activities Tour Oceaneer Club		Youth Activities Tour Oceaneer Lab																	
			Poolside Jams with Cruise Staff DJ Deck 9 Stage														Blarney Beats with Ciaran & Conall Lobby Atrium							
ADULTS	Celtic Sounds with Ciaran & Conall Quiet Cove Pool		Traditional Irish Music with Ciaran & Conall Quiet Cove Pool														Footprint Analysis Senses Spa & Salon							
	Spa Open House Senses Spa & Salon				Spa Raffle Senses Spa & Salon																			
VIBE 14-17 YEARS OLD	Youth Activities Open House & Registration												Youth Activities Open House										Open for Teens	
EDGE 11-14 YEARS OLD	Youth Activities Open House & Registration														Tween You & I Super Spin								Open for Tweens	
OCEANEER LAB 3-12 YEARS OLD	Youth Activities Open House & Registration		Youth Activities Tour		Open House								Youth Activities Open House		Game Challenge								Meet Your Counselors	
OCEANEER CLUB 3-12 YEARS OLD	Youth Activities Open House & Registration		Picture This		Youth Activities Tour		Open House						Youth Activities Open House		Spider-Man Web-Warriors		Youth Activities Open House							

Mandatory Guest Assembly Drill 4:15 pm (All Guests must attend)

All ship services will be suspended during this time.

Refer to the posted drill instructions on the back of your stateroom door prior to heading to Deck 4. Please bring your Key to the World Card.

You will not need your life jacket for the Guest Assembly Drill.



Your Assembly Station is indicated on your Key To The World card.



Evening	7:00	7:15	7:30	7:45	8:00	8:15	8:30	8:45	9:00	9:15	9:30	9:45	10:00	10:15	10:30	10:45	11:00	11:15	11:30	11:45	12:00	
FUNNEL VISION					The Muppets (PG) Open Captioning Funnel Vision								The Jungle Book (2016) (PG) Open Captioning Funnel Vision									
BUENA VISTA THEATRE					Cars 3 (G) Duration: 1 Hour 49 Minutes								Born in China (G) Duration: 1 Hour 21 Minutes									
CHARACTERS																						
FUN FOR ALL AGES	Lobby Atrium		D Lounge		Walt Disney Theatre				D Lounge		Family Dance Party D Lounge		Live Music with The Royal Duo Promenade Lounge		Live Music with The Royal Duo Promenade Lounge							
ADULTS			70's Music Trivia O'Gills Pub						Cruise Staff DJ Fathoms		Magic Quest Fathoms		The Magic & Illusion of SHAWN FARQUHAR Fathoms		Cruise Staff DJ Fathoms						Late Night Piano Keys	
	Cards Tournament				Profiles		GAGA Ball		Ice Breakers				The Download		Heroes and Villains							
VIBE 14-17 YEARS OLD	Wii Challenge		Make a Card for Mickey's Birthday		Four Square		Profiles		Meet Your Counselors		Ice Breakers		Heroes and Villains									
EDGE 11-14 YEARS OLD	Capture the Flag		Super Sloppy Science		GAGA Ball		Mickey Mania		Ice Breakers		Monstropolis Most Wanted		Holiday Crafts									
OCEANEER LAB 3-12 YEARS OLD	Explore the Club		Memory Wall		Magic Show		Human Bingo		Four Square		Glow Jam											

FOLD along the dotted lines and take me with you so you don't miss any of the fun!

YOUTH ACTIVITIES OPEN HOUSE
A non-secured program with activities for families, adults and children to enjoy together.



Be our Guest!

WELCOME ABOARD SHOW

WALT DISNEY THEATRE

Deck 4, Forward
6:15 pm & 8:30 pm

As a courtesy to all Guests, we kindly advise that the saving of seats is **not** permitted in the Walt Disney Theatre.

Assistance is available at the entrance to the Walt Disney Theatre 30 minutes prior to show time.

Character Meet & Greet Ticket Distribution

Port Adventures Desk, Deck 3, Midship - 12:00 pm - 2:00 pm

For Guests who did not reserve meet and greets online, a limited number of tickets are available today to meet some of your favorite Disney friends.

Princess Gathering ~ Frozen Gathering

Disney Junior Character Breakfast ~ Heroic Encounters

Tickets are required for each of these meet and greets. Space is limited.

Character Appearances

ADVENTURES AWAY

Deck 9 Stage - 4:45 pm

MINNIE MOUSE

Lobby Atrium (P) - 5:15 pm

PLUTO

DK4 Mid (S) - 5:15 pm

MICKEY MOUSE

Lobby Atrium (P) - 5:45 pm

GOOFY

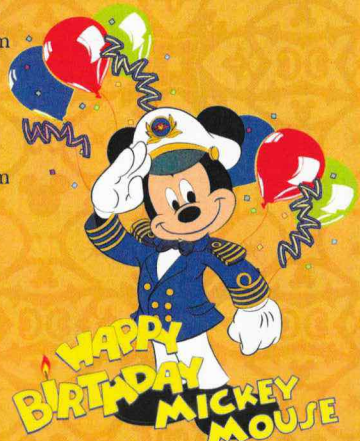
DK4 Mid (S) - 5:45 pm

MICKEY'S TREE LIGHTING MAGIC

Lobby Atrium - 7:30 pm

SANTA'S WINTER WONDERLAND BALL

Lobby Atrium - 10:15 pm



(S) Starboard Side - (P) Port Side

For detailed character appearances, refer to the character line on your Navigator, the Disney Cruise Line App, or the digital character board in the Lobby Atrium.

Lines close 15 minutes after advertised start time.

SHIP DIRECTORY

YOUTH ACTIVITIES

DISNEY'S OCEANEER CLUB	DECK 5, MID	12:30 PM - 3:45 PM
		4:45 PM - 12:00 AM
DISNEY'S OCEANEER LAB	DECK 5, MID	12:30 PM - 3:45 PM
		4:45 PM - 12:00 AM
EDGE	DECK 9, MID	12:30 PM - 3:45 PM
		4:45 PM - 12:00 AM
IT'S A SMALL WORLD NURSERY	DECK 5, AFT	12:30 PM - 3:45 PM
		4:45 PM - 11:00 PM
VIBE	DECK 10, MID	12:30 PM - 3:45 PM
		4:45 PM - 12:00 AM

POOLS

*Children under 12 years of age must have adult supervision in all pools.

AQUADUNK	DECK 10, MID	12:00 PM - 3:00 PM
		6:00 PM - 8:00 PM
AQUALAB	DECK 9, AFT	12:00 PM - 3:30 PM
		4:30 PM - 6:00 PM
GOOFY'S POOL	DECK 9, MID	12:00 PM - 3:30 PM
NEPHEWS' SPLASH ZONE	DECK 9, AFT	12:00 PM - 3:30 PM
		4:30 PM - 6:00 PM
QUIET COVE POOL (18+)	DECK 9, FWD	12:00 PM - 11:00 PM
TWIST 'N' SPOUT	DECK 9, AFT	12:00 PM - 3:00 PM
		4:30 PM - 8:00 PM

Please note, "selfie sticks" are not permitted any aquatic area.

Complimentary pool vests are available for children to use in the pools onboard. They are located on the pool deck.

RECREATION

PORT ADVENTURES DESK	DECK 3, MID	12:00 PM - 3:30 PM
		4:30 PM - 6:00 PM
		7:00 PM - 8:30 PM
SENSES FITNESS CENTER (18+)	DECK 9, FWD	11:30 AM - 10:00 PM
WIDE WORLD OF SPORTS DECK	DECK 10, FWD	24 HOURS

GENERAL INFORMATION

BUENA VISTA THEATRE	DECK 5, AFT	SHOWTIMES
CONNECT@SEA DESK	DECK 3, AFT	1:30 PM - 4:30 PM
		7:00 PM - 10:00 PM
DISNEY VACATION CLUB DESK	DECK 4, MID	6:00 PM - 10:00 PM
DISNEY VACATION PLANNING	DECK 4, MID	7:30 PM - 8:30 PM
FUNNEL VISION	DECK 9, MID	SHOWTIMES
GUEST SERVICES	DECK 3, MID	24 HOURS
HAIR BRAIDING	DECK 9, MID	4:00 PM - 6:00 PM
MEDICAL HEALTH CENTER	DECK 1, FWD	4:30 PM - 7:00 PM
PORT SHOPPING DESK	DECK 3, MID	7:00 PM - 9:00 PM
PRELUDES	DECK 4, FWD	5:30 PM - 9:30 PM
SENSES SPA AND SALON	DECK 9, FWD	11:30 AM - 10:00 PM
SHUTTERS PHOTO GALLERY	DECK 4, AFT	6:30 PM - 10:00 PM
WALT DISNEY THEATRE	DECK 4, FWD	SHOWTIMES

SHOPPING

BIBBIDI BOBBIDI BOUTIQUE	DECK 10, FWD	12:00 PM - 3:00 PM
		5:00 PM - 9:00 PM
MICKEY'S MAINSAIL	DECK 4, FWD	6:00 PM - 11:00 PM
QUACKS	DECK 9, MID	
SEA TREASURES	DECK 3, FWD	6:00 PM - 11:00 PM
VISTA GALLERY	DECK 4, MID	6:00 PM - 11:00 PM
WHITE CAPS	DECK 4, FWD	6:00 PM - 11:00 PM

DUE TO PORT REGULATIONS, WHEN THE SHIP IS DOCKED, THE STORES MUST REMAIN CLOSED.

EVENING ATTIRE Cruise Casual

WEATHER Today: Cloudy
FORECAST High: 64°F/18°C

DINING & LOUNGES

LUNCH

CABANAS	DECK 9, AFT	12:00 PM - 3:15 PM
CARIOCCA'S	DECK 3, AFT	11:45 AM - 1:45 PM
DAISY'S DE LITES	DECK 9, AFT	12:00 PM - 3:30 PM
		4:15 PM - 6:00 PM
PETE'S BOILER BITES	DECK 9, AFT	12:00 PM - 3:30 PM
		4:15 PM - 6:00 PM
PINOCCHIO'S PIZZERIA	DECK 9, MID	12:00 PM - 3:30 PM
		4:15 PM - 6:00 PM

DINNER

ANIMATOR'S PALATE	DECK 4, AFT	5:45 PM & 8:15 PM
CARIOCCA'S	DECK 3, AFT	5:45 PM & 8:15 PM
LUMIERE'S	DECK 3, MID	5:45 PM & 8:15 PM
PALO (18+) (FOR RESERVATIONS CALL 7-8843)	DECK 10, AFT	6:00 PM - 8:30 PM
PETE'S BOILER BITES	DECK 9, AFT	6:00 PM - 10:00 PM
PINOCCHIO'S PIZZERIA	DECK 9, MID	

LATE NIGHT SNACKS

O'GILLS PUB	DECK 3, FWD	10:45 PM - 11:30 PM
PINOCCHIO'S PIZZERIA	DECK 9, MID	9:30 PM - 12:00 AM
PROMENADE LOUNGE	DECK 3, AFT	10:45 PM - 11:30 PM

ADDED FEATURES

EYE SCREAM	DECK 9, AFT	12:00 PM - 11:00 PM
BEVERAGE STATION	DECK 9, AFT	24 HOURS
ROOM SERVICE	DIAL 7-4330	24 HOURS

ENTERTAINMENT - LOUNGES - BARS

Adults must be 21 and older to consume alcoholic beverages.

AFTER HOURS	DECK 3, FWD	(AFTER 9:00 PM. ADULTS ONLY)
COVE CAFE (18+)	DECK 9, MID	11:45 AM - 12:00 AM
D LOUNGE	DECK 4, MID	SHOWTIMES
FATHOMS (18+)	DECK 3, FWD	7:00 PM - 2:00 AM
FROZONE TREATS	DECK 9, AFT	11:45 AM - 6:00 PM
KEYS (18+)	DECK 3, FWD	6:00 PM - 12:00 AM
O'GILLS PUB (18+ AFTER 9:00 PM)	DECK 3, FWD	11:45 AM - 12:00 AM
PRELUDES	DECK 4, FWD	5:30 PM - 9:30 PM
PROMENADE LOUNGE	DECK 3, AFT	11:45 AM - 12:00 AM
PINOCCHIO'S PIZZERIA	DECK 9, MID	11:45 AM - 12:00 AM
SIGNALS (18+)	DECK 9, FWD	11:45 AM - 9:30 PM

Public Health Advisory: Consuming raw or undercooked meats, poultry, seafood, shellfish, or eggs may increase your risk for foodborne illness, especially if you have certain medical condition.



Explore and more with our carefully selected Port Adventures. Pass by the Port Adventures Desk, Deck 3, Midship to find out more.

IMPORTANT NUMBERS

Fire/Security: 7-3001
Medical EMERGENCY: 7-3000
Health Center: 7-1927