



VOYAGE NAVIGATOR

FRIDAY
NOVEMBER 10, 2017

TO

FRIDAY
NOVEMBER 17, 2017

CRUISE HIGHLIGHTS

FRIDAY

GALVESTON

Port Departure: 4:30 pm
All Aboard: 3:30 pm
Attire: Cruise Casual

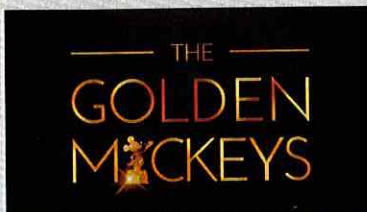


BE OUR GUEST - WELCOME ABOARD SHOW
Walt Disney Theatre
6:15 pm & 8:30 pm

SATURDAY

DAY AT SEA

Attire: Formal



THE GOLDEN MICKEYS
Walt Disney Theatre
6:15 pm & 8:30 pm

SUNDAY

COZUMEL

All Ashore: 8:45 am
All Aboard: 3:45 pm
Attire: Cruise Casual



SHOWTIME: JOHN CHARLES
Walt Disney Theatre
6:15 pm & 8:30 pm

MONDAY

GEORGE TOWN

All Ashore: 10:00 am
All Aboard: 5:30 pm
Attire: Cruise Casual



THOR: RAGNAROK - (PG-13) - 3D
Walt Disney Theatre
5:15 pm & 8:30 pm

TUESDAY

FALMOUTH

All Ashore: 8:00 am
All Aboard: 4:45 pm
Attire: Pirate or Cruise Casual



SHOWTIME: SHAWN FAROUHAR
Walt Disney Theatre
6:15 pm & 8:30 pm

WEDNESDAY

DAY AT SEA

Attire: Semi Formal



FROZEN, A MUSICAL SPECTACULAR
Walt Disney Theatre
2:30 pm, 6:00 pm & 8:30 pm

THURSDAY

DAY AT SEA

Attire: Cruise Casual



DISNEY DREAMS: AN ENCHANTED CLASSIC
Walt Disney Theatre
6:15 pm & 8:30 pm

Subject to change.

WELCOME ABOARD!

YOUR STATEROOM & LUGGAGE

Staterooms will be ready at 1:30 pm. To allow your Stateroom Host/ess time to prepare your room, please do not remove the blue stanchion straps. Stateroom hosts will deliver luggage throughout the day until 5:30 pm.

STATEROOMS WITH BUNK BEDS

Bunk beds are recessed into the ceiling and will be prepared during evening turndown service by your Stateroom Host/ess.

STATEROOM SAFE

Each stateroom is equipped with a secured storage safe. Instructions for use are located on the safe.

TO CHANGE DINING ASSIGNMENT

Requests for different seating times will be taken today:

- 12:30 pm - 3:30 pm; Book in Promenade Lounge, Deck 3, Aft or please dial 7-10891 and leave a voicemail.

PALO DINING RESERVATIONS

Reservations are required and will be taken on a first come basis today:

- 12:30 pm - 3:30 pm; Book in Promenade Lounge, Deck 3, Aft or please dial 7-6843 and leave a voicemail.

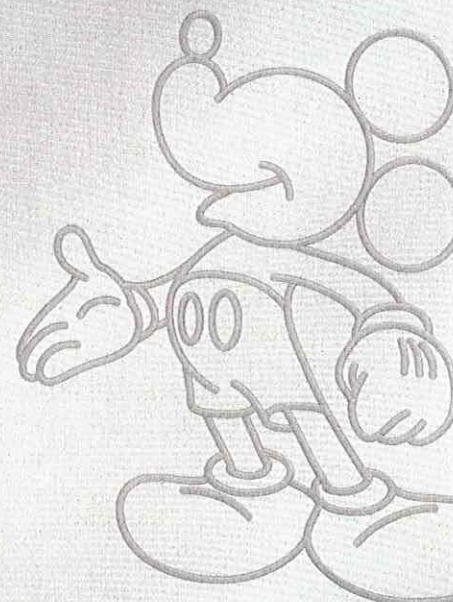
Adult Exclusive Dining Opportunity! Guests are invited to make 2 dinner reservations at our adult-exclusive restaurant, Palo. This includes one reservation on embarkation evening and one more on another night of the cruise. Reservations are subject to availability and a specialty dining charge will apply.

DINNER

5:45 pm - First seating 8:15 pm - Second seating

Please check your Key To The World Card for details of your dining rotation, and bring them to your specific dining location. There is no need to wait in line prior to dinner. Dining Rooms open at designated seating times and your table is reserved each night of your cruise.

AP = Animator's Palate, Deck 4, Aft TR = Triton's, Deck 3, Midship TP = Tiana's Place, Deck 3, Aft



Create the most memorable experiences during your Disney Cruise Line vacation with Port Adventures! Our Port Adventures are designed for you to see the best our ports have to offer. Stop by the Port Adventures Desk, Deck 3, Midship where our friendly team will be happy to assist you plan your adventure!

There is an adventure for everyone on your Disney Wonder® vacation.

IMPORTANT NUMBERS

Fire/Security: 7-3001

Medical Emergency: 7-3000

Health Center: 7-1927

ADULT ACTIVITY HIGHLIGHTS



1820 SOCIETY (GUESTS 18-20 YEARS ONLY)
1820 Society is an exclusive option for young adult Guests. Come meet fellow passengers and learn about the excellent activities that the Disney Wonder offers to create the perfect cruise experience.



80'S FLASHBACK
The 80's are back! Join your Cruise Staff team, in testing your 80's knowledge in this high energy 80's revival.



ANYONE CAN COOK
Every Chef has a specialty, and ours is no exception. Get a taste of perfection with each recipe.

ART OF THE THEME SHOW TOUR

Join us for a guided tour highlighting the design, Imagineering and artistry of the ship. This tour is reserved for Guests 18 and over.

CRUISIN' SOLO GATHERING

Single, single parent or just traveling alone? Join your Cruise Staff for an informal gathering.



DISNEY INNOVATIONS
Take part in our presentation on the 'Top 10' innovations presented by the Walt Disney Company.



MATCH YOUR MATE
It's time to play everyone's favorite couples game show, Match Your Mate!



Senses Spa & Salon has a variety of seminars and fitness classes available throughout the cruise. Pamper yourself with therapeutic spa treatments of heat, steam, rain and water in luxurious and tranquil private rooms. Deck 9, Forward.

BEVERAGE SEMINARS

Your Beverage team has a host of tastings and seminars to entertain and educate you. Stop by Promenade Lounge, Deck 3, Aft to pre-book these experiences (nominal fee applies).

Mixology - Stem to Stern Wine Tasting - Martini Tasting - Champagne Tasting

Beer Tasting - Cognac Tasting - Whisky Tasting

Tequila & Margarita Tasting - Chocolate & Liquor Tasting - Rum Tasting

FEATURED VARIETY ACTS THIS VOYAGE



THE PHYSICAL COMEDY OF HEATH HYCHE
Heath uses stand-up comedy, quick-change costumes, original music, sound effects, and cleverly constructed props and scenery to take the audience on a journey through his vivid imagination and meet a cavalcade of manic characters. Heath Hyche's TV credits include "The Tonight Show with Jay Leno", "Last Comic Standing", and two seasons on "Blue Collar TV" alongside Jeff Foxworthy, Larry the Cable Guy, and Bill Engvall. On the big screen, Heath appeared in the films "Man on the Moon" with Jim Carrey and Will Ferrell's "Talladega Nights".



THE MUSIC & COMEDY OF JOHN CHARLES
With just his guitar, and his incredible singing voice, John Charles amazes his audience with his ability to combine music, comedy and audience interaction. No two shows are ever alike!



THE PHYSICAL COMEDY OF PETE MATTHEWS
With his infectious enthusiasm, his rapid-fire wit and highly skilled juggling, Pete will no doubt change your opinion of jugglers. Widely recognized as the UK's Premier Comedy Juggler, Pete's early career kick started in 1990 with TV appearances on "Barrymore" and "You Bet!"



THE MAGIC AND ILLUSION OF SHAWN FARQUHAR
Shawn Farquhar has been entertaining audiences around the globe for over two decades. What sets him apart from every other "rabbit pulling" magic act? Just that! He's not some rabbit pulling magic act. In fact he has been described as having "connected the skills of his talent with the passion in his heart". Shawn offers a show that involves the audience in an experience of magic and comedy that is unparalleled.

FUN FOR ALL AGES HIGHLIGHTS



ADVENTURES AWAY
Earn your status as V.I.P. sailors as your Cruise Director, your Disney Pals, and the Cruise Staff officially begin your "Adventures Away".



A PIRATES LIFE FOR ME
Calling all Pirates, we be! If ye have an adventurous spirit or pirate savvy, come spin the "Wheel of Destiny" fer a treasure trove of fun be ripe for the takin' in this action packed pirate game show.



DISNEY VACATION CLUB GROUP PREVIEW

Want to learn more about taking magical vacations year after year? Please see a Disney Vacation Club Cast Member on Deck 4, Midship, or call 7-2805 from your stateroom phone for more information about our interactive group presentation.



FAMILY TALENT SHOW SIGN UP

Pre-register at the Port Adventures Desk, Deck 3, Midship. Let your family take center stage and strut their stuff. Everyone has a talent, it's time to show off yours! Pre-register at the Port Adventures Desk.



JACKPOT BINGO

CASH prizes and raffle prizes to be won in our family friendly Bingo sessions with your Cruise Staff. Those under the age of 18 must be accompanied by an adult to play!



MICKEY MANIA

Join us for the ultimate test of your Disney knowledge as we play our live, interactive game show, that's "insanial".



PIRATES IN THE CARIBBEAN DECK PARTY

Yer Disney Friends are all set for a swashbucklin' good time! It's a Pirate Celebration, me hearties! Hoist yourself to Deck 9 to enjoy a rowdy buccaneer bash we call Pirates IN the Caribbean Deck Party.



SO YOU THINK YOU KNOW YOUR FAMILY?

This fun-filled family game show is always full of surprises. Find out how well you know, or don't know your family!



WHO WANTS TO BE A MOUSEKETEER?

Your chance to get into the "hot seat" and win limited edition prizes. Or, play along as part of our live studio audience.

VERY MERRYTIME HOLIDAY HIGHLIGHTS



DECK THE DECK TROPICAL HOLIDAY PARTY

How do you celebrate the Holidays when you're on a tropical cruise? Your Disney pals know how to get a holiday party started with the magic of the tropics as our background! Mele Kaliki Maka everyone!



MICKEY'S TREE LIGHTING MAGIC

Come gather in the ship's atrium to experience this magical Disney Cruise Line holiday tradition. Join Mickey and the gang for a holiday sing along as a family of dreamers helps us create a little Disney magic by lighting our holiday tree.



SANTA'S WINTER WONDERLAND BALL

An evening of spectacle and holiday enchantment, join your Cruise Director and our holiday Snowbells as we celebrate the arrival of a very special holiday guest - Santa Claus! Get your cameras ready. You don't want to miss Santa and the World Famous Disney Characters as they create a Winter Wonderland....at sea!

STORYTIME WITH MRS. CLAU

Full of fun and whimsy, Mrs. Claus makes a very special visit to the ship's atrium to read classic holiday tales to all the children - and children at heart!



'TIL WE MEET AGAIN

A final chance to come together with your Disney friends and Merrytime cruisers. The children are all invited to the stairs to perform their own candlelight magic. Hugs, photos and joy will prevail!

Please Check Daily Personal Navigator for all times and locations.

YOUTH ACTIVITIES INFO & HIGHLIGHTS



Dine & Play

A convenience for families dining at 8:15 pm, our Youth Activities counselors will be available at 9:15 pm at the entrance of Triton's, Tiana's Place and Animator's Palate dining rooms to bring registered children to join the fun in the Youth Activities areas.

Pre-School Fun

Disney's Oceaneer Club is reserved for only those between 3-5 years of age. This is a time for them to become acclimated to Disney's Oceaneer Club, make new friends and join in on a lot of fun-filled programs and activities. Please note after Pre-School Fun has concluded, Disney's Oceaneer Club will be open for Secured Programming for ages 3-12.

Youth Activities Open House

Open House is an opportunity for all to come and participate in a variety of exciting activities and free time in the Oceaneer Club, Oceaneer Lab, Edge and Vibe throughout the cruise. During these times secured programming will still be offered in the other venue for those looking to check their children into care.

Youth Activities Venue Tour

Come and take a tour of Disney's Oceaneer Club and Disney's Oceaneer Lab. This informative tour will give you the information you need to know about our exciting spaces and activities offered for children ages 3-12. Please see your Personal Navigator or the Navigator App for times.



3 - 12 years old

JOIN THE LION GUARD

Harness your inner animal and find out if you have what it takes to join the Lion Guard!

MILES' COSMIC EXPLORER ADVENTURES

Miles needs your help! Gadfly has stolen his tech, and it's up to you to solve clues and puzzles in order to return the missing items back to Miles.

SOFIA THE FIRST - MAGICAL STORYTELLING

You're invited to take part in Sorcery 101 at the Royal Prep Academy, where you'll learn a few spells and help retell one of Sofia's many magical adventures.



3 - 12 years old

LAVA FLOW

Build your own volcano and watch it erupt as you learn about the physics of volcanoes.

MAKE A SHOW DISNEY STYLE

OPEN CALL - kids needed for a fun, one of a kind, make it your own show. Working in teams you'll have everything you need to make your own show in 90 minutes or less. Whether you're a Beauty or a Beast, you're sure to have fun!

PISTON CUP CHALLENGE

It's Dinoco time and you're part of the pit crew! Design your own race car and see if you've got what it takes to end up in the winner's circle!



11 - 14 years old

HEROES AND VILLAINS

Join your favorite hero or villain team on a series of activities that will take place throughout the cruise.

DESCENDANT'S DEN DJ SPIN OFF

Photo Booth! DJ lessons! Fun games! Sing! Laugh! Dance! It's the next generation of fun - Descendants style!



14 - 17 years old

GOTCHA

You will try to eliminate your victim by various methods collecting points throughout the day, last person standing with the most points wins.

THAT'S HILARIOUS

Ever wanted to show off your comedy skills? Then be a part of the cast for the crazy improv show "That's Hilarious" and put on a live show for your friends.

BUENA VISTA THEATRE

Deck 5, Aft

FEATURE MOVIES THIS VOYAGE

FRIDAY - GALVESTON

2:00 pm	G	Born in China
5:30 pm	PG-13	Guardians of the Galaxy Vol. 2
8:15 pm	PG-13	Guardians of the Galaxy Vol. 2

SATURDAY - DAY AT SEA

8:30 am	G	Cars 3
12:30 pm	PG-13	Pirates of the Caribbean: Dead Men Tell No Tales
3:15 pm	G	Cars 3
5:30 pm	PG	Beauty and the Beast (2017)
8:15 pm	PG	Beauty and the Beast (2017)
10:45 pm	PG-13	Guardians of the Galaxy Vol. 2

SUNDAY - COZUMEL

8:45 am	G	Born in China
10:30 am	PG	Beauty and the Beast (2017)
1:00 pm	G	Born in China
2:45 pm	PG	Beauty and the Beast (2017)
5:45 pm	G	Cars 3
8:15 pm	G	Cars 3
10:45 pm	PG	Beauty and the Beast (2017)

MONDAY - GEORGE TOWN

2:45 pm	PG-13	Pirates of the Caribbean: Dead Men Tell No Tales
5:30 pm	PG-13	Thor: Ragnarok
8:30 pm	PG-13	Thor: Ragnarok
11:00 pm	PG-13	Thor: Ragnarok

TUESDAY - FALMOUTH

9:00 am	PG-13	Thor: Ragnarok
12:00 pm	PG	Moana
2:45 pm	PG-13	Thor: Ragnarok
5:30 pm	PG-13	Pirates of the Caribbean: Dead Men Tell No Tales
8:15 pm	PG-13	Pirates of the Caribbean: Dead Men Tell No Tales
11:00 pm	G	Cars 3

WEDNESDAY - DAY AT SEA

9:00 am	PG	Beauty and the Beast (2017)
11:30 am	PG-13	Guardians of the Galaxy Vol. 2
2:30 pm	PG-13	Thor: Ragnarok
5:15 pm	PG-13	Thor: Ragnarok
8:30 pm	PG-13	Thor: Ragnarok
10:45 pm	PG	Beauty and the Beast (2017)

THURSDAY - DAY AT SEA

8:30 am	PG	Family Movie Fun Time: Moana
10:45 am	G	Cars 3
1:00 pm	PG-13	Thor: Ragnarok
3:30 pm	PG-13	Pirates of the Caribbean: Dead Men Tell No Tales
6:00 pm	G	Cars 3
8:30 pm	G	Cars 3
11:00 pm	PG-13	Thor: Ragnarok

Subject to change.

MORE TO ENJOY ONBOARD

NEW SPRING 2019 ITINERARIES

New Spring 2019 Itineraries announced! Set sail for favorite tropical destinations as Disney Cruise Line will return to The Bahamas, Caribbean and even Baja cruises! Visit the Disney Vacation Planning desk, Deck 4, Midship for more information. Disney Vacation Planning tends to get busy on the last day of sailing. Don't miss the opportunity to plan your next Disney vacation.

DISNEY VACATION CLUB® GROUP PREVIEW

Want to learn more about taking magical vacations year after year? Please see a Disney Vacation Club Cast Member on Deck 4, Midship, or call 7-2805 from your stateroom phone for more information about our interactive group presentation.

PORT SHOPPING INFORMATION

Join Celia, your Port Shopping Guide, for the Port Shopping Talk on Day at Sea 1, Buena Vista Theatre, Deck 5, Aft, at 11:00 am. Visit the Port Shopping Desk, Deck 3, Midship from 7:00 pm - 8:30 pm for a complimentary cruise ship charm and to pick up extra raffle tickets for a chance to win a Diamond Pendant at the Port Shopping Talk. Tune into Channel 24-6 all cruise long for all of your Port Shopping information.

Connect@Sea

FREE INTERNET EMBARKATION DAY SPECIAL

Sign up for a free 50 MB Internet package today and enjoy it throughout the cruise! This offer is only available from noon to midnight on the day your cruise begins. On your wireless device, simply find the "DCL-Guest" Wi-Fi Network, go to www.dclguest.com to create an account, and get your free 50 MB of data to start sharing your memories even before you leave port! If you have any questions, ask our Connect@Sea Expert located at Deck 3, Midship. No purchase necessary. The free 50 MB package can only be used for the duration of the cruise. Only one free package per stateroom, but everyone can share it. Unused data from a package will not be reimbursed and it is non-transferable between voyages or ships.

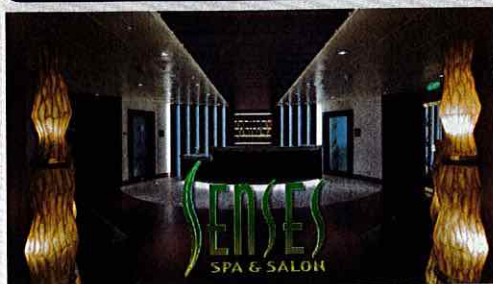
RELIGIOUS SERVICES

Groups who need a location to practice their faith may contact Guest Services for availability information.

GINGERBREAD HOUSE MAKING

Join your Cruise Staff and our Pastry Chef as you create your own Gingerbread House. Limited availability, visit Port Adventures to sign-up!

SENSES SPA & SALON



DECK 9, FORWARD

Extension 7-1465

RAINFOREST

Come enjoy our serenity lounge, with heated chairs, dry sauna, aromatherapy steam rooms and rainfall, misting showers.

7 Day Pass: Couples \$193 Single \$144

REJUVENATION SPA CONSULTATIONS

Ready to enhance your natural beauty? Book your free Facial Rejuvenation consultation with our Rejuvenation Dr. at the Senses Spa.

ONBOARD ACUPUNCTURE

Acupuncture is a safe and effective medicine that allows your body to heal itself, and is effective for various health conditions. See your onboard Acupuncturist for your free consultation.

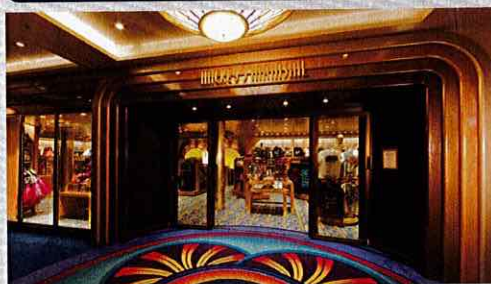
IONITHERMIE

Lose between 1 – 8 inches? Speed up your metabolism. Firm muscle tone.

Improve appearance of cellulite. \$155/1 session or \$299/3 sessions.

AN 18% AUTO GRATUITY IS ADDED TO ALL SENSES SPA SERVICES.

MERCHANDISE SHOPPING



DECK 4, FORWARD

THE DISNEY PARKS COLLECTION BY PANDORA JEWELRY

The Disney Parks Collection by PANDORA Jewelry features hand-finished .925 sterling silver and 14K gold charms inspired by some of Disney's most beloved characters. Visit White Caps on Deck 4, Forward, where you'll find a specially designed sterling silver charm featuring a Disney Cruise Line ship.

ROYAL SEA PACKAGE

Does your Princess have more than one transformation reserved during this voyage? The Royal Sea Package contains multiple transformations in addition to unique offerings such as a Royal Rolling Trunk and a Keepsake Glass Slipper. Inquire about upgrading your experience to the Royal Sea Package by visiting the Bibbidi Bobbidi Boutique, Deck 10, Forward or by dialing extension 7-10878.

ON BOARD JEWELRY STYLIST SOPHIA FIORI

Are you looking for exquisite diamond jewelry? Visit White Caps at 7:30 pm on Embark Day and meet your Sophia Fiori Jewelry Stylist and personal shopper for fine diamond jewelry. Take the time to view the red carpet designs and the fabulous Signature Collection from Sophia Fiori. Deck 4, Forward.

DUE TO PORT REGULATIONS, WHEN THE SHIP IS DOCKED, THE STORES WILL REMAIN CLOSED.

SHUTTERS PHOTO GALLERY



DECK 4, AFT

WELCOME ABOARD RAFFLE

View your embarkation photos in Shutters, Deck 4, Aft and enter our raffle for a chance to win a 10 Digital Photos valued at \$149.95. Winner must be present at the 10:00 pm drawing in Shutters, Deck 4, Aft.

*Terms and conditions apply.

Visit Shutters on Deck 4, Aft for more information.

GET THE PICTURE!

Take home all your stateroom photos from this cruise on a USB! Terms and conditions apply. Visit Shutters on Deck 4, Aft and ask your friendly Shutters staff for more information. Get The Picture! Hurry! Order yours now.

PHOTO BOOK

Turn your magical vacation memories into an impressive keepsake with a personalized PhotoBook. Order by 9:30 pm on the final night of the cruise.

PRIVATE STUDIO PORTRAITURE

Book our exclusive and contemporary Private Studio experience today and capture these memories. No obligation to purchase.

PHOTOS ARE AVAILABLE FOR VIEWING ON OUR INTERACTIVE PHOTO KIOSKS APPROXIMATELY FIVE HOURS AFTER BEING TAKEN AND ARE ONLY AVAILABLE FOR PURCHASE DURING THIS CRUISE.

IMPORTANT INFORMATION

Security Notice

All Guests (including children) who wish to disembark the ship are required to present their Key to the World card at the gangway. A photo ID is also required for those Guests who are 18 years of age or older. Guests under the age of 18 are required to have a parent, guardian or other responsible adult sign an authorization form at the Guest Service Desk if they wish to go ashore unaccompanied or with any adult from another stateroom.

Inclement Weather

For the safety of all Guests, outdoor events may be changed due to unforeseen weather conditions.

Insect Repellent Advisory

The Centers for Disease Control and Prevention recommends wearing long-sleeved shirts and pants along with insect repellent to protect against mosquito bites and related illnesses when going ashore. Complimentary insect repellent is available on the pier as you exit the ship. Insect repellent is also available for purchase in White Caps. When using both sunscreen and insect repellent, use sunscreen first and apply insect repellent on top of sunscreen.

Corridor Quiet Hours

As a courtesy to all our Guests, please recognize quiet hallway hours from 10:00 pm til 8:00 am.

Environmental Message

With Disney's commitment to the Environment, please refrain from throwing anything over the Ship's side. Thank you!

No Reserved Seats Policy

As a courtesy to all our Guests, we kindly advise that the saving of seats is not permitted in the Walt Disney Theatre, and the saving of the sun loungers is not permitted on Deck 9 and 10. Items left unattended will be returned to lost and found at Guest Services, Deck 3 Midship.

Cold and Flu Reminder

Please wash hands frequently and thoroughly, particularly before meals. Contact the Health Center by dialing 7-1927, should anyone in your party become ill.

Smoking

For the comfort of our Guests, the following areas are designated as smoking areas:

*Deck 9, Forward, Port Side by

*Deck 4, aft, port side from 6:00 pm to

6:00 am only (all of Deck 4 is non-

smoking from 6:00 am to 6:00 pm)

Smoking is prohibited inside all Guest

staterooms and on stateroom verandahs.

Guests found smoking in their staterooms

or on their verandahs will be charged a

\$250 stateroom recovery fee. Electronic

cigarettes may only be used in designated

smoking areas.

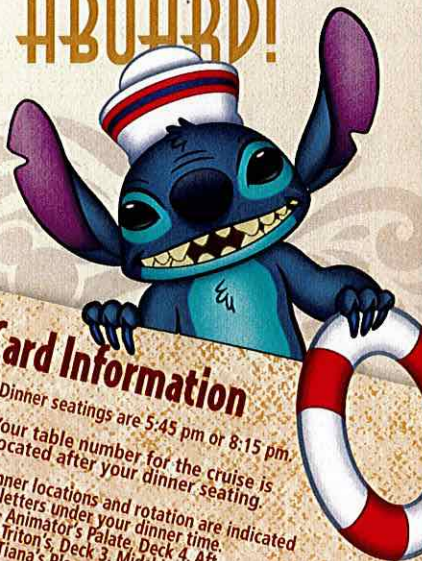
Walt Disney Theatre

Theatrical performances may use artificial fog, strobe lights, pyrotechnics and other special effects. For the safety of our performers and the comfort of those around you, the use of any photography, video recording device or any electronic equipment is prohibited.

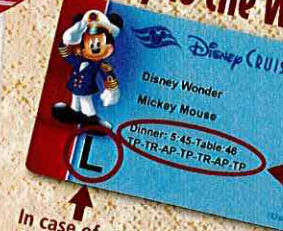
Verandah Safety

Please do not leave any personal items on your verandah that may be blown overboard or present a fire hazard if left unattended. Guests should not sit, lean or climb on the railing or leave children unattended on the verandah. Do not open the verandah and stateroom doors simultaneously as this may create a wind effect and could cause the doors to slam unexpectedly.

WELCOME ABOARD!



Key to the World Card Information



In case of an emergency, your lettered Assembly Station is indicated here.


- ♥ Dinner seatings are 5:45 pm or 8:15 pm.
- ♥ Your table number for the cruise is located after your dinner seating.
- ♥ Dinner locations and rotation are indicated by letters under your dinner time.
AP - Animator's Palate, Deck 4, Aft
TR - Triton's Place, Deck 3, Midship
TP - Tiana's Place, Deck 3, Aft



FAMILY DECK PARTY

Earn your status as V.I.P. sailors as your Cruise Director, Ashley, your Disney Pals, and the Cruise Staff officially begin your "Adventures Away".

Deck 9 Stage,
4:30 pm

Afternoon	1:45	2:00	2:15	2:30	2:45	3:00	3:15	3:30	3:45	4:00	4:15	4:30	4:45	5:00	5:15	5:30	5:45	6:00	6:15	6:30	6:45
FUNNEL VISION	The Princess and the Frog (G) Funnel Vision							<div>Mandatory Guest Assembly Drill 4:00 pm (All Guests must attend) All ship services will be suspended during this time. Refer to the posted drill instructions on the back of your stateroom door prior to heading to Deck 4. Please bring your Key to the World Card. You will not need your life jacket for the Guest Assembly Drill. Your Assembly Station is indicated on your Key To The World card.</div>					Adventures Away Deck 9 Stage					The Hunchback of Notre Dame (G) Funnel Vision			
BUENA VISTA THEATRE	Born in China (G) Duration: 1 Hour, 21 Minutes												Guardians of the Galaxy Vol.2 (PG-13) Duration: 2 Hours 2 Minutes								
CHARACTERS													Mickey Lobby Atrium (P)		Pluto Lobby Atrium (P)						
FUN FOR ALL AGES	Walking Ship Tour Preludes				Walking Ship Tour Preludes										Jewish Sabbath Cadillac Lounge (Guest Led)				 Walt Disney Theatre		
	Join the Lion Guard Oceaneer Club				Youth Activities Tour Oceaneer Lab										Live Music with Sunshine Duo Promenade Lounge		Live Music with Bernadett Bihari Lobby Atrium				
ADULTS						Spa Open House Senses Spa Fitness Center									Spa Raffle Senses Spa Fitness Center				Cruisin' Solo Gathering Cove Cafe		Complimentary Walk-In Facial Rejuvenation Consultations Senses Spa Fitness Center
VIBE 14-17 YEARS OLD	Youth Activities Open House & Registration												Youth Activities Open House			Open for Teens					
EDGE 11-14 YEARS OLD	Youth Activities Open House & Registration												Youth Activities Open House			Open for Tweens					
OCEANEER LAB 3-12 YEARS OLD	Youth Activities Open House & Registration Youth Activities Tour Open House												Youth Activities Open House					Ice Breakers			
OCEANEER CLUB 3-12 YEARS OLD	Open House Join the Lion Guard Youth Activities Open House & Registration												Youth Activities Open House			Pre-School Fun (3-5 Years Old)					

VERY MERRYTIME CRUISES

Evening	7:00	7:15	7:30	7:45	8:00	8:15	8:30	8:45	9:00	9:15	9:30	9:45	10:00	10:15	10:30	10:45	11:00	11:15	11:30	11:45	12:00
FUNNEL VISION	Frozen Fever (G) Funnel Vision							Cool Runnings (PG) Funnel Vision					Guardians of the Galaxy (PG-13) Funnel Vision								
BUENA VISTA THEATRE								Guardians of the Galaxy Vol. 2 (PG-13) Duration: 2 Hours 2 Minutes					Mickey Lobby Atrium (P)								
CHARACTERS	Tree Lighting Magic Lobby Atrium							Pluto Lobby Atrium (P)													
FUN FOR ALL AGES	Mickey Mania D Lounge							Be our Guest! Walt Disney Theatre					Family Dance Party D Lounge		Family KARAOKE D Lounge						
	Disney Vacation Club Members Preview Azure												Live Music with Sunshine Duo Promenade Lounge		Live Music with Sunshine Duo Promenade Lounge						
ADULTS	Pub Quiz Crown & Fin Pub							Bernadett Bihari LIVE Cadillac Lounge					Majority Rules Azure		Cruise Staff DJ Azure						
	Live Music with Christopher Yates Cadillac Lounge							1820 Society: Sit it, Blend it, Taste it. Cove Cafe					Match Mates Azure		Late Night Piano with Christopher Yates Cadillac Lounge						
VIBE 14-17 YEARS OLD	Meet Your Counselors							Ninja					Ice Breakers		The Download						
EDGE 11-14 YEARS OLD	Wii Challenge							GAGA Ball					Ice Breakers		Heroes and Villains						
OCEANEER LAB 3-12 YEARS OLD	Meet Your Counselors							Oceaneer Rangers					Lava Flow		GAGA Ball						
OCEANEER CLUB 3-12 YEARS OLD	Go Fetch							HUMAN Bingo					MARVEL Super Hero Academy Avengers Assemble		Once Upon a Time						

DRINK Bay Breeze (Alcoholic)
Princess Delight (Non-Alcoholic)

FOLD

Fold along the dotted lines and take me with you so you don't miss any of the fun!

FOLD

YOUTH ACTIVITIES OPEN HOUSE
A non-secured program with activities for families, adults and children to enjoy together.

FRIDAY, NOVEMBER 10, 2017 - GALVESTON, TEXAS



Be our Guest!

WELCOME ABOARD SHOW

Featuring



The Physical Comedy of
Heath Hyche



The Music & Comedy
John Charles

WALT DISNEY THEATRE

Deck 4, Forward
6:15 pm & 8:30 pm

As a courtesy to all Guests, we kindly advise that the saving of seats is not permitted in the Walt Disney Theatre.

Assistance is available at the entrance to the Walt Disney Theatre 30 minutes prior to show time.

Character Meet & Greet Ticket Distribution

Port Adventures Desk, Deck 3, Midship - 12:00 pm - 2:00 pm

For Guests who did not reserve meet and greets online, a limited number of tickets are available today to meet some of your favorite Disney friends.

Princess Gathering ~ Frozen Meet and Greet

VIP Character Breakfast

Tickets are required for each of these meet and greets.

Space is limited.

Character Appearances

ADVENTURES AWAY

Deck 9 Stage - 4:30 pm

MICKEY MOUSE

Lobby Atrium (P)
5:15 pm & 10:15 pm

PLUTO

Lobby Atrium (P)
5:45 pm & 9:45 pm

MICKEY'S TREE LIGHTING MAGIC

Lobby Atrium - 7:30 pm



(S) Starboard Side - (P) Port Side

For details of daily Disney character appearances, refer to the character line on your Navigator Grid, or the digital character board in the Lobby Atrium. Lines close 15 minutes after advertised start time.

SHIP DIRECTORY

YOUTH ACTIVITIES

DISNEY'S OCEANEER CLUB	DECK 5, MID	12:00 PM - 3:30 PM
		4:30 PM - 12:00 AM
DISNEY'S OCEANEER LAB	DECK 5, MID	12:00 PM - 3:30 PM
		4:30 PM - 12:00 AM
EDGE	DECK 9, MID	12:00 PM - 3:30 PM
		4:30 PM - 12:00 AM
IT'S A SMALL WORLD NURSERY	DECK 5, AFT	12:00 PM - 3:30 PM
		5:30 PM - 11:00 PM
VIBE	DECK 10, MID	12:00 PM - 3:30 PM
		4:30 PM - 1:00 AM

POOLS

Children under 12 years of age must have adult supervision in all pools.

AQUALAB	DECK 9, AFT	12:00 PM - 3:30 PM
		4:30 PM - 6:00 PM
DORY'S REEF	DECK 9, AFT	12:00 PM - 3:30 PM
GOOFY'S POOL	DECK 9, MID	12:00 PM - 3:30 PM
		6:00 PM - 10:00 PM
QUIET COVE POOL (18+)	DECK 9, FWD	12:00 PM - 3:30 PM
		4:30 PM - 11:00 PM
TWIST N' SPOUT	DECK 9, AFT	12:00 PM - 3:00 PM
		4:30 PM - 6:00 PM

Please note, "selfie sticks" are not permitted in any aquatic area.

Complimentary pool vests are available for children to use in the pools onboard.

They are located on the pool deck.

RECREATION

CHILL SPA	DECK 9, FWD	12:00 PM - 10:00 PM
PORT ADVENTURES DESK	DECK 3, MID	12:00 PM - 3:30 PM
		4:30 PM - 8:30 PM
SENSES FITNESS CENTER (18+)	DECK 9, FWD	12:00 PM - 10:00 PM
WIDE WORLD OF SPORTS DECK	DECK 10, FWD	12:00 PM - 3:30 PM
		4:30 PM - 11:59 PM

GENERAL INFORMATION

BUENA VISTA THEATRE	DECK 5, AFT	SHOWTIMES
CONNECT@SEA DESK	DECK 3, AFT	1:00 PM - 4:00 PM
		7:00 PM - 10:00 PM
DISNEY VACATION CLUB DESK	DECK 4, MID	5:00 PM - 10:30 PM
DISNEY VACATION PLANNING DESK	DECK 4, MID	7:00 PM - 8:00 PM
FUNNEL VISION	DECK 9, MID	SHOWTIMES
GUEST SERVICES	DECK 3, MID	24 HOURS
MEDICAL HEALTH CENTER	DECK 1, FWD	4:30 PM - 7:00 PM
PORT SHOPPING DESK	DECK 3, MID	7:00 PM - 8:30 PM
PRELUDES	DECK 4, FWD	5:45 PM - 9:30 PM
SENSES SPA AND SALON	DECK 9, FWD	12:00 PM - 10:00 PM
SHUTTERS PHOTO GALLERY	DECK 4, AFT	6:00 PM - 10:00 PM
WALT DISNEY THEATRE	DECK 4, FWD	SHOWTIMES

SHOPPING

ART GALLERY	DECK 4, MID	7:00 PM - 9:00 PM
BIBBIDI BOBBIDI BOUTIQUE	DECK 10, FWD	12:00 PM - 3:00 PM
		5:00 PM - 9:00 PM
MICKEY'S MAINSAIL	DECK 4, FWD	6:00 PM - 11:00 PM
QUACKS	DECK 9, MID	
SEA TREASURES	DECK 3, FWD	6:00 PM - 10:00 PM
WHITE CAPS	DECK 4, FWD	6:00 PM - 11:00 PM

TIME ZONE CHANGE

Remember to turn your clocks **FORWARD 1 HOUR** upon retiring on **FRIDAY** evening, or first thing **SATURDAY** morning.



EVENING ATTIRE Cruise Casual

WEATHER FORECAST Today: Partly Sunny
High: 62°F/17°C

DINING & LOUNGES

LUNCH

CABANAS	DECK 9, AFT	12:00 PM - 3:00 PM
DAISY'S DE LITES	DECK 9, AFT	12:00 PM - 3:30 PM
		4:30 PM - 7:00 PM
PINOCCHIO'S PIZZERIA	DECK 9, MID	12:00 PM - 3:30 PM
		4:30 PM - 6:00 PM
PETE'S BOILER BITES	DECK 9, AFT	12:00 PM - 3:30 PM
		4:30 PM - 6:00 PM
TRITON'S	DECK 3, MID	11:45 AM - 1:30 PM

DINNER

ANIMATOR'S PALATE	DECK 4, AFT	5:45 PM & 8:15 PM
PALO (18+)	DECK 10, AFT	6:00 PM - 8:30 PM
PETE'S BOILER BITES	DECK 9, AFT	6:00 PM - 9:30 PM
TIANA'S PLACE	DECK 3, AFT	5:45 PM & 8:15 PM
TRITON'S	DECK 3, MID	5:45 PM & 8:15 PM

LATE NIGHT SNACKS

CROWN & FIN PUB (18+ AFTER 9:00 PM)	DECK 3, FWD	10:30 PM - 11:30 PM
PINOCCHIO'S PIZZERIA	DECK 9, MID	9:30 PM - 12:00 AM
PROMENADE LOUNGE	DECK 3, AFT	10:30 PM - 11:30 PM

ADDED FEATURES

BEVERAGE STATION	DECK 9, AFT, PORT SIDE	24 HOURS
EYE SCREAM	DECK 9, MID	12:00 PM - 3:30 PM
		4:30 PM - 11:00 PM
ROOM SERVICE	DIAL 4330	24 HOURS

ENTERTAINMENT - LOUNGES - BARS

Adults must be 21 and older to consume alcoholic beverages.

AZURE (18+ AFTER 9:00 PM)	DECK 3, FWD	9:00 PM - 1:30 AM
CADILLAC LOUNGE (18+)	DECK 3, FWD	6:00 PM - 12:30 AM
COVE CAFE (18+)	DECK 9, MID	6:30 AM - 12:00 AM
CROWN & FIN PUB (18+ AFTER 9:00 PM)	DECK 3, FWD	6:00 PM - 12:00 AM
D LOUNGE	DECK 4, MID	SHOWTIMES
PINOCCHIO'S PIZZERIA	DECK 9, MID	11:45 AM - 12:00 AM
PRELUDES	DECK 4, FWD	5:45 PM - 9:30 PM
PROMENADE LOUNGE	DECK 3, AFT	11:45 AM - 12:00 AM
SIGNALS (18+)	DECK 9, FWD	11:45 AM - 10:30 PM
SULLY'S SIPS	DECK 9, MID	11:45 AM - 6:00 PM

Public Health Advisory: Consuming raw or under-cooked meats, poultry, seafood, shellfish, or eggs may increase your risk for food borne illness, especially if you have certain medical conditions.

Disney Cruise Line

PORT ADVENTURES

Explore and more with our carefully selected Port Adventures. Visit the Port Adventures Desk, Deck 3, Midship to find out more.

All Aboard: 3:30 pm

IMPORTANT NUMBERS

Fire/Security: 7-3001
Medical EMERGENCY: 7-3000
Health Center: 7-1927