

VOYAGE NAVIGATOR

FRIDAY
NOVEMBER 17, 2017

TO

FRIDAY
NOVEMBER 24, 2017

CRUISE HIGHLIGHTS

FRIDAY

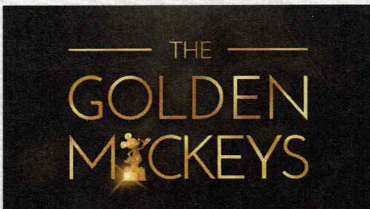
GALVESTON
Port Departure: 4:30 pm
All Aboard: 3:30 pm
Attire: Cruise Casual



BE OUR GUEST - WELCOME ABOARD SHOW
Walt Disney Theatre
6:15 pm & 8:30 pm

SATURDAY

DAY AT SEA
Attire: Formal



THE GOLDEN MICKEYS
Walt Disney Theatre
6:15 pm & 8:30 pm

SUNDAY

KEY WEST
All Ashore: 9:45 am
All Aboard: 4:30 pm
Attire: Cruise Casual



SHOWTIME: JOHN CASSIDY
Walt Disney Theatre
6:15 pm & 8:30 pm

MONDAY

NASSAU
All Ashore: 10:00 am
All Aboard: 5:15 pm
Attire: Pirate or Cruise Casual



SHOWTIME: MICHAEL HOLLY
Walt Disney Theatre
6:15 pm & 8:30 pm

TUESDAY

DISNEY CASTAWAY CAY
All Ashore: 8:30 am
All Aboard: 4:45 pm
Attire: Cruise Casual



THOR: RAGNAROK - (PG-13)
Walt Disney Theatre
5:00 pm & 8:15 pm

WEDNESDAY

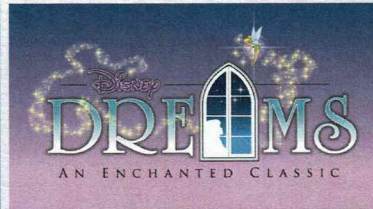
DAY AT SEA
Attire: Semi Formal



FROZEN, A MUSICAL SPECTACULAR
Walt Disney Theatre
2:30 pm, 6:00 pm & 8:30 pm

THURSDAY

DAY AT SEA
Attire: Cruise Casual



DISNEY DREAMS: AN ENCHANTED CLASSIC
Walt Disney Theatre
6:15 pm & 8:30 pm

Subject to change.

WELCOME ABOARD!

YOUR STATEROOM & LUGGAGE

Staterooms will be ready at 1:30 pm. To allow your Stateroom Host/ess time to prepare your room, please do not remove the blue stanchion straps. Stateroom hosts will deliver luggage throughout the day until 5:30 pm.

STATEROOMS WITH BUNK BEDS

Bunk beds are recessed into the ceiling and will be prepared during evening turndown service by your Stateroom Host/ess.

STATEROOM SAFE

Each stateroom is equipped with a secured storage safe. Instructions for use are located on the safe.

TO CHANGE DINING ASSIGNMENT

Requests for different seating times will be taken today:

- 12:30 pm - 3:30 pm; Book in Promenade Lounge, Deck 3, Aft or please dial 7-10891 and leave a voicemail.

PALO DINING RESERVATIONS

Reservations are required and will be taken on a first come basis today:

- 12:30 pm - 3:30 pm; Book in Promenade Lounge, Deck 3, Aft or please dial 7-6843 and leave a voicemail.

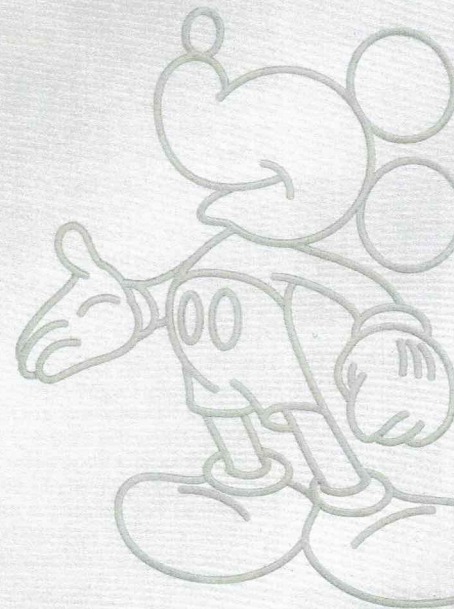
Adult Exclusive Dining Opportunity! Guests are invited to make 2 dinner reservations at our adult-exclusive restaurant, Palo. This includes one reservation on embarkation evening and one more on another night of the cruise. Reservations are subject to availability and a specialty dining charge will apply.

DINNER

5:45 pm - First seating 8:15 pm - Second seating

Please check your Key To The World Card for details of your dining rotation, and bring them to your specific dining location. There is no need to wait in line prior to dinner. Dining Rooms open at designated seating times and your table is reserved each night of your cruise.

AP = Animator's Palate, Deck 4, Aft TR = Triton's, Deck 3, Midship TP = Tiana's Place, Deck 3, Aft



Create the most memorable experiences during your Disney Cruise Line vacation with Port Adventures! Our Port Adventures are designed for you to see the best of our ports have to offer. Stop by the Port Adventures Desk, Deck 3, Midship where our friendly team will be happy to assist you plan your adventure!

There is an adventure for everyone on your Disney Wonder® vacation.

IMPORTANT NUMBERS

Fire/Security: 7-3001

Medical Emergency: 7-3000

Health Center: 7-1927

ADULT ACTIVITY HIGHLIGHTS



1820 SOCIETY (GUESTS 18-20 YEARS ONLY)
1820 Society is an exclusive option for young adult Guests. Come meet fellow passengers and learn about the excellent activities that the Disney Wonder offers to create the perfect cruise experience.



80'S FLASHBACK
The 80's are back! Join your Cruise Staff team, in testing your 80's knowledge in this high energy 80's revival.



ANYONE CAN COOK
Every Chef has a specialty, and ours is no exception. Get a taste of perfection with each recipe.

ART OF THE THEME SHOW TOUR

Join us for a guided tour highlighting the design, Imagineering and artistry of the ship. This tour is reserved for Guests 18 and over.

CRUISIN' SOLO GATHERING

Single, single parent or just traveling alone? Join your Cruise Staff for an informal gathering.



DISNEY INNOVATIONS
Take part in our presentation on the 'Top 10' innovations presented by the Walt Disney Company.



MATCH YOUR MATE
It's time to play everyone's favorite couples game show, Match Your Mate!



Senses Spa & Salon has a variety of seminars and fitness classes available throughout the cruise. Pamper yourself with therapeutic spa treatments of heat, steam, rain and water in luxurious and tranquil private rooms. Deck 9, Forward.

BEVERAGE SEMINARS

Your Beverage team has a host of tastings and seminars to entertain and educate you. Stop by Promenade Lounge, Deck 3, Aft to pre-book these experiences (nominal fee applies).

Mixology - Stem to Stern Wine Tasting - Martini Tasting - Champagne Tasting
Beer Tasting - Cognac Tasting - Whisky Tasting
Tequila & Margarita Tasting - Chocolate & Liquor Tasting - Rum Tasting

FEATURED VARIETY ACTS THIS VOYAGE



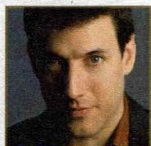
THE PHYSICAL COMEDY OF HEATH HYCHE
Heath uses stand-up comedy, quick-change costumes, original music, sound effects, and cleverly constructed props and scenery to take the audience on a journey through his vivid imagination and meet a cavalcade of manic characters. Heath Hyche's TV credits include "The Tonight Show with Jay Leno", "Last Comic Standing", and two seasons on "Blue Collar TV" alongside Jeff Foxworthy, Larry the Cable Guy, and Bill Engvall. On the big screen, Heath appeared in the films "Man on the Moon" with Jim Carrey and Will Ferrell's "Talladega Nights".



THE MAGIC, BALLOONS & COMEDY OF JOHN CASSIDY
John Cassidy's bizarre antics have earned him widespread acclaim as one of the most original comedians performing today. Starting his career as a magician and balloon sculptor for children's birthday parties, John began noticing that the parents were also finding his act to be especially hilarious and ingenious.



THE PHYSICAL COMEDY OF MICHAEL HOLLY
Michael Holly began his performing days on the cobbled streets of Fantasyland at Disneyland in 1985 and since then has been the comedy star of a dozen Las Vegas Shows including Vegas-The Show at Planet Hollywood, V-The Ultimate Variety Show at the Venetian, Les Folies Bergere at The Tropicana and has the highest rated one man comedy variety show in Las Vegas, his own, "Michael Holly's Off The Wall Comedy Hour".



THE MUSIC & COMEDY OF ROB PARAVONIAN
Comedy Musician Rob Paravonian plays hilarious songs, pokes fun at the hits, and tells musical stories with a unique blend of brilliant comedy and top-notch musicianship, entertaining FUN for the entire family!

Please Check Daily Personal Navigator for all times and locations.

FUN FOR ALL AGES HIGHLIGHTS



ADVENTURES AWAY
Earn your status as V.I.P. sailors as your Cruise Director, your Disney Pals, and the Cruise Staff officially begin your "Adventures Away".



A PIRATES LIFE FOR ME
Calling all Pirates, we be! If ye have an adventurous spirit or pirate savvy, come spin the "Wheel of Destiny" for a treasure trove of fun be ripe for the takin' in this action packed pirate game show.



DISNEY VACATION CLUB GROUP PREVIEW
Want to learn more about taking magical vacations year after year? Please see a Disney Vacation Club Cast Member on Deck 4, Midship, or call 7-2805 from your stateroom phone for more information about our interactive group presentation.



FAMILY TALENT SHOW SIGN UP
Pre-register at the Port Adventures Desk, Deck 3, Midship. Let your family take center stage and strut their stuff. Everyone has a talent, it's time to show off yours! Pre-register at the Port Adventures Desk.



JACKPOT BINGO
CASH prizes and raffle prizes to be won in our family friendly Bingo sessions with your Cruise Staff. Those under the age of 18 must be accompanied by an adult to play!



MICKEY MANIA
Join us for the ultimate test of your Disney knowledge as we play our live, interactive game show, that's "insania!"



PIRATES IN THE CARIBBEAN DECK PARTY
Yer Disney Friends are all set for a swashbucklin' good time! It's a Pirate Celebration, me hearties! Hoist yourself to Deck 9 to enjoy a rowdy buccaneer bash we call Pirates IN the Caribbean Deck Party.



SO YOU THINK YOU KNOW YOUR FAMILY?
This fun-filled family game show is always full of surprises. Find out how well you know, or don't know your family!



WHO WANTS TO BE A MOUSEKETEER?
Your chance to get into the "hot seat" and win limited edition prizes. Or, play along as part of our live studio audience.

VERY MERRYTIME HOLIDAY HIGHLIGHTS



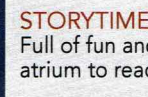
DECK THE DECK TROPICAL HOLIDAY PARTY
How do you celebrate the Holidays when you're on a tropical cruise? Your Disney pals know how to get a holiday party started with the magic of the tropics as our background! Mele Kaliki Maka everyone!



MICKEY'S TREE LIGHTING MAGIC
Come gather in the ship's atrium to experience this magical Disney Cruise Line holiday tradition. Join Mickey and the gang for a holiday sing along as a family of dreamers helps us create a little Disney magic by lighting our holiday tree.



SANTA'S WINTER WONDERLAND BALL
An evening of spectacle and holiday enchantment, join your Cruise Director and our holiday Snowbells as we celebrate the arrival of a very special holiday guest - Santa Claus! Get your cameras ready. You don't want to miss Santa and the World Famous Disney Characters as they create a Winter Wonderland....at sea!



STORYTIME WITH MRS. CLAU
Full of fun and whimsy, Mrs. Claus makes a very special visit to the ship's atrium to read classic holiday tales to all the children - and children at heart!



YOUTH ACTIVITIES INFO & HIGHLIGHTS



Dine & Play

A convenience for families dining at 8:15 pm, our Youth Activities counselors will be available at 9:15 pm at the entrance of Triton's, Tiana's Place and Animator's Palate dining rooms to bring registered children to join the fun in the Youth Activities areas.

Pre-School Fun

Disney's Oceaneer Club is reserved for only those between 3-5 years of age. This is a time for them to become acclimated to Disney's Oceaneer Club, make new friends and join in on a lot of fun-filled programs and activities. Please note after Pre-School Fun has concluded, Disney's Oceaneer Club will be open for Secured Programming for ages 3-12.

Youth Activities Open House

Open House is an opportunity for all to come and participate in a variety of exciting activities and free time in the Oceaneer Club, Oceaneer Lab, Edge and Vibe throughout the cruise. During these times secured programming will still be offered in the other venue for those looking to check their children into care.

Youth Activities Venue Tour

Come and take a tour of Disney's Oceaneer Club and Disney's Oceaneer Lab. This informative tour will give you the information you need to know about our exciting spaces and activities offered for children ages 3-12. Please see your Personal Navigator or the Navigator App for times.



3 - 12 years old

JOIN THE LION GUARD

Harness your inner animal and find out if you have what it takes to join the Lion Guard!

MILES' COSMIC EXPLORER ADVENTURES

Miles needs your help! Gadfly has stolen his tech, and it's up to you to solve clues and puzzles in order to return the missing items back to Miles.

SOFIA THE FIRST - MAGICAL STORYTELLING

You're invited to take part in Sorcery 101 at the Royal Prep Academy, where you'll learn a few spells and help retell one of Sofia's many magical adventures.



3 - 12 years old

LAVA FLOW

Build your own volcano and watch it erupt as you learn about the physics of volcanoes.

MAKE A SHOW DISNEY STYLE

OPEN CALL - kids needed for a fun, one of a kind, make it your own show. Working in teams you'll have everything you need to make your own show in 90 minutes or less. Whether you're a Beauty or a Beast, you're sure to have fun!

PISTON CUP CHALLENGE

It's Dinoco time and you're part of the pit crew! Design your own race car and see if you've got what it takes to end up in the winner's circle!



11 - 14 years old

HEROES AND VILLAINS

Join your favorite hero or villain team on a series of activities that will take place throughout the cruise.

DESCENDANT'S DEN DJ SPIN OFF

Photo Booth! DJ lessons! Fun games! Sing! Laugh! Dance! It's the next generation of fun - Descendants style!



14 - 17 years old

GOTCHA

You will try to eliminate your victim by various methods collecting points throughout the day, last person standing with the most points wins.

THAT'S HILARIOUS

Ever wanted to show off your comedy skills? Then be a part of the cast for the crazy improv show "That's Hilarious" and put on a live show for your friends.

BUENA VISTA THEATRE

Deck 5, Aft

FEATURE MOVIES THIS VOYAGE

FRIDAY - GALVESTON

2:00 pm	G	Born in China	
5:30 pm	PG-13	Guardians of the Galaxy Vol. 2	
8:15 pm	PG-13	Guardians of the Galaxy Vol. 2	
11:00 pm	PG	Beauty and the Beast (2017)	

SATURDAY - DAY AT SEA

8:30 am	G	Cars 3	
12:30 pm	PG-13	Pirates of the Caribbean: Dead Men Tell No Tales	
3:15 pm	G	Cars 3	
5:30 pm	PG	Beauty and the Beast (2017)	
8:15 pm	PG	Beauty and the Beast (2017)	
10:45 pm	PG-13	Guardians of the Galaxy Vol. 2	

SUNDAY - KEY WEST

8:30 am	PG	Family Movie Fun Time: Moana	
11:30 am	PG	Beauty and the Beast (2017)	
2:45 pm	PG-13	Guardians of the Galaxy Vol. 2	
5:30 pm	PG-13	Pirates of the Caribbean: Dead Men Tell No Tales	
8:15 pm	PG-13	Pirates of the Caribbean: Dead Men Tell No Tales	
11:00 pm	G	Cars 3	

MONDAY - NASSAU

11:30 am	G	Born in China	
2:45 pm	PG-13	Pirates of the Caribbean: Dead Men Tell No Tales	
5:30 pm	PG-13	Guardians of the Galaxy Vol. 2	
8:15 pm	PG-13	Guardians of the Galaxy Vol. 2	
11:00 pm	PG-13	Pirates of the Caribbean: Dead Men Tell No Tales	

TUESDAY - DISNEY CASTAWAY CAY

8:30 am	PG	Beauty and the Beast (2017)	
2:30 pm	PG-13	Pirates of the Caribbean: Dead Men Tell No Tales	
5:30 pm	G	Cars 3	
8:30 pm	G	Cars 3	

WEDNESDAY - DAY AT SEA

2:00 pm	PG-13	Thor: Ragnarok	
5:15 pm	PG-13	Thor: Ragnarok	
8:30 pm	PG-13	Thor: Ragnarok	

THURSDAY - DAY AT SEA

9:00 am	PG	Moana	
2:00 pm	PG-13	Thor: Ragnarok	
11:00 pm	PG-13	Thor: Ragnarok	

Subject to change.

MORE TO ENJOY ONBOARD

NEW SPRING 2019 ITINERARIES

New Spring 2019 Itineraries announced! Set sail for favorite tropical destinations as Disney Cruise Line will return to The Bahamas, Caribbean and even Baja cruises! Visit the Disney Vacation Planning desk, Deck 4, Midship for more information. Disney Vacation Planning tends to get busy on the last day of sailing. Don't miss the opportunity to plan your next Disney vacation.

DISNEY VACATION CLUB® MEMBERS PREVIEW

Join us as we welcome you onboard with a fun, interactive event where you can catch the latest updates at Disney Vacation Club! Please see a Disney Vacation Club Cast Member on Deck 4, Midship or call 7-2805 from your stateroom phone for more information.

PORT SHOPPING INFORMATION

Join Celia, your Port Shopping Guide, for the Port Shopping Talk on Day at Sea 1, Buena Vista Theatre, Deck 5, Aft, at 11:00 am. Visit the Port Shopping Desk, Deck 3, Midship from 7:00 pm - 8:30 pm for a complimentary cruise ship charm and to pick up extra raffle tickets for a chance to win a Diamond Pendant at the Port Shopping Talk. Tune into Channel 24-6 all cruise long for all of your Port Shopping information.

Connect@Sea

FREE INTERNET EMBARKATION DAY SPECIAL

Sign up for a free 50 MB Internet package today and enjoy it throughout the cruise! This offer is only available from noon to midnight on the day your cruise begins. On your wireless device, simply find the "DCL-Guest" Wi-Fi Network, go to www.dclguest.com to create an account, and get your free 50 MB of data to start sharing your memories even before you leave port! If you have any questions, ask our Connect@Sea Expert located at Deck 3, Midship. No purchase necessary. The free 50 MB package can only be used for the duration of the cruise. Only one free package per stateroom, but everyone can share it. Unused data from a package will not be reimbursed and it is non-transferable between voyages or ships.

RELIGIOUS SERVICES

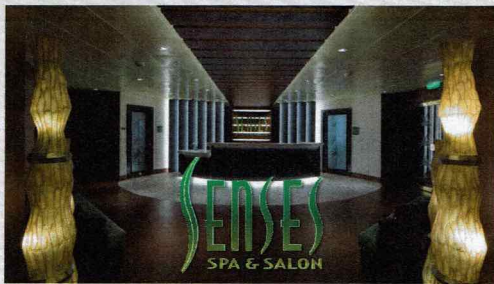
Groups who need a location to practice their faith may contact Guest Services for availability information.

GINGERBREAD HOUSE MAKING

Join your Cruise Staff and our Pastry Chef as you create your own Gingerbread House. Limited availability, visit Port Adventures to sign-up!



SENSES SPA & SALON



DECK 9, FORWARD Extension 7-1465

RAINFOREST

Come enjoy our serenity lounge, with heated chairs, dry sauna, aromatherapy steam rooms and rainfall, misting showers.

7 Day Pass: Couples \$193 Single \$144

REJUVENATION SPA CONSULTATIONS

Ready to enhance your natural beauty? Book your free Facial Rejuvenation consultation with our Rejuvenation Dr. at the Senses Spa.

ONBOARD ACUPUNCTURE

Acupuncture is a safe and effective medicine that allows your body to heal itself, and is effective for various health conditions. See your onboard Acupuncturist for your free consultation.

IONTHERMIE

Lose between 1 – 8 inches? Speed up your metabolism. Firm muscle tone.

Improve appearance of cellulite. \$155/1 session or \$299/3 sessions.

AN 18% AUTO GRATUITY IS ADDED TO ALL SENSES SPA SERVICES.

MERCHANDISE SHOPPING



DECK 4, FORWARD

DISNEY CRUISE LINE DOONEY & BOURKE HANDBAGS

Swing by White Caps and commemorate your cruise with style with the new nautical themed Disney Cruise Line® Dooney & Bourke handbag collection. Deck 4, Forward.

BIBBIDI BOBBIDI BOUTIQUE

A makeover fit for a princess! Fairy Godmothers-in-Training are ready with magic and pixie dust to give your Prince and Princess the transformation of a lifetime. Make your reservations by visiting Bibbidi Bobbidi Boutique, Deck 10, Forward, Port Side, or dialing extension 7-10878. Limited space available.

ON BOARD JEWELRY STYLIST SOPHIA FIORI

Are you looking for exquisite diamond jewelry? Visit White Caps at 7:30 pm on Embark Day and meet your Sophia Fiori Jewelry Stylist and personal shopper for fine diamond jewelry. Take the time to view the red carpet designs and the fabulous Signature Collection from Sophia Fiori. Deck 4, Forward.

FESTIVE SOUVENIRS AVAILABLE ONBOARD

Commemorate your Very Merry Time Cruise with festive souvenirs such as a mug, tree ornament, or t-shirt designed especially for Disney Cruise Line. Mickey's Mainsail, Deck 4 Forward.

SHUTTERS PHOTO GALLERY



DECK 4, AFT

WELCOME ABOARD RAFFLE

View your embarkation photos in Shutters, Deck 4, Aft and enter our raffle for a chance to win a 10 Digital Photos valued at \$149.95. Winner must be present at the 10:00 pm drawing in Shutters, Deck 4, Aft. *Terms and conditions apply. Visit Shutters on Deck 4, Aft for more information.

GET THE PICTURE!

Take home all your stateroom photos from this cruise on a USB! Terms and conditions apply. Visit Shutters on Deck 4, Aft and ask your friendly Shutters staff for more information. Get The Picture! Hurry! Order yours now.

PHOTO BOOK

Turn your magical vacation memories into an impressive keepsake with a personalized PhotoBook. Order by 9:30 pm on the final night of the cruise.

PRIVATE STUDIO PORTRAITURE

Book our exclusive and contemporary Private Studio experience today and capture these memories. No obligation to purchase.

PHOTOS ARE AVAILABLE FOR VIEWING ON OUR INTERACTIVE PHOTO KIOSKS APPROXIMATELY FIVE HOURS AFTER BEING TAKEN AND ARE ONLY AVAILABLE FOR PURCHASE DURING THIS CRUISE.

IMPORTANT INFORMATION

Security Notice

All Guests (including children) who wish to disembark the ship are required to present their Key to the World card at the gangway. A photo ID is also required for those Guests who are 18 years of age or older. Guests under the age of 18 are required to have a parent, guardian or other responsible adult sign an authorization form at the Guest Service Desk if they wish to go ashore unaccompanied or with any adult from another stateroom.

Inclement Weather

For the safety of all Guests, outdoor events may be changed due to unforeseen weather conditions.

Insect Repellent Advisory

The Centers for Disease Control and Prevention recommends wearing long-sleeved shirts and pants along with insect repellent to protect against mosquito bites and related illnesses when going ashore. Complimentary insect repellent is available on the pier as you exit the ship. Insect repellent is also available for purchase in White Caps. When using both sunscreen and insect repellent, use sunscreen first and apply insect repellent on top of sunscreen.

Corridor Quiet Hours

As a courtesy to all our Guests, please recognize quiet hallway hours from 10:00 pm til 8:00 am.

Environmental Message

With Disney's commitment to the Environment, please refrain from throwing anything over the Ship's side. Thank you!

No Reserved Seats Policy

As a courtesy to all our Guests, we kindly advise that the saving of seats is not permitted in the Walt Disney Theatre, and the saving of the sun loungers is not permitted on Deck 9 and 10. Items left unattended will be returned to lost and found at Guest Services, Deck 3 Midship.

Cold and Flu Reminder

Please wash hands frequently and thoroughly, particularly before meals, Contact the Health Center by dialing 7-1927, should anyone in your party become ill.

Smoking

For the comfort of our Guests, the following areas are designated as smoking areas: *Deck 9, Forward, Port Side by *Deck 4, aft, port side from 6:00 pm to 6:00 am only (all of Deck 4 is non-smoking from 6:00 am to 6:00 pm) Smoking is prohibited inside all Guest staterooms and on stateroom verandahs. Guests found smoking in their staterooms or on their verandahs will be charged a \$250 stateroom recovery fee. Electronic cigarettes may only be used in designated smoking areas.

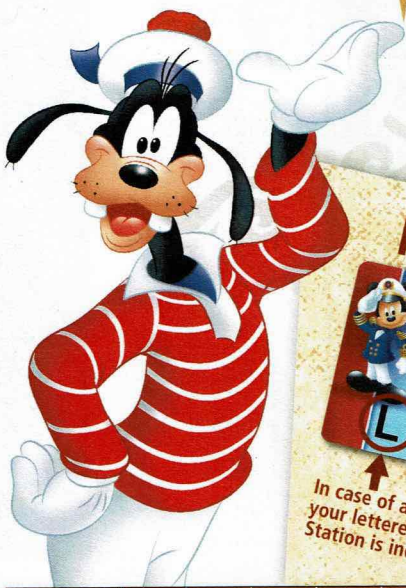
Walt Disney Theatre

Theatrical performances may use artificial fog, strobe lights, pyrotechnics and other special effects. For the safety of our performers and the comfort of those around you, the use of any photography, video recording device or any electronic equipment is prohibited.

Verandah Safety

Please do not leave any personal items on your verandah that may be blown overboard or present a fire hazard if left unattended. Guests should not sit, lean or climb on the railing or leave children unattended on the verandah. Do not open the verandah and stateroom doors simultaneously as this may create a wind effect and could cause the doors to slam unexpectedly.

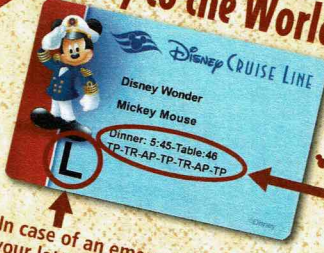
WELCOME ABOARD!



FAMILY DECK PARTY

Earn your status as V.I.P. sailors as your Cruise Director, Ashley, your Disney Pals, and the Cruise Staff officially begin your "Adventures Away".
Deck 9 Stage, 4:30 pm

Key to the World Card Information



In case of an emergency, your lettered Assembly Station is indicated here.

- ♥ Dinner seatings are 5:45 pm or 8:15 pm.
- ♥ Your table number for the cruise is located after your dinner seating.
- ♥ Dinner locations and rotation are indicated by letters under your dinner time.
 AP - Animator's Palate, Deck 4, Aft
 TR - Triton's, Deck 3, Midship
 TP - Tiana's Place, Deck 3, Aft

Afternoon	1:45	2:00	2:15	2:30	2:45	3:00	3:15	3:30	3:45	4:00	4:15	4:30	4:45	5:00	5:15	5:30	5:45	6:00	6:15	6:30	6:45									
FUNNEL VISION	The Princess and the Frog (G) Open Captioning Funnel Vision																	The Hunchback of Notre Dame (G)												
BUENA VISTA THEATRE	Born in China (G) Duration: 1 Hour 21 Minutes																	Coco Preview (G) Duration: 10 Minutes		Guardians of the Galaxy Vol. 2 (PG-13) Duration: 2 Hours 16 Minutes										
CHARACTERS																		Mickey Lobby Atrium (P)		Pluto Lobby Atrium (P)										
FUN FOR ALL AGES	Walking Ship Tour Preludes			Walking Ship Tour Preludes																				Jewish Sabbath Cadillac Lounge (Guest Led)						
	Join the Lion Guard			Youth Activities Tour																				Live Music with Sunshine Duo Promenade Lounge		Live Music with Bernadett Bihari Lobby Atrium				
ADULTS	Spa Open House Senses Spa Fitness Center																	Spa Raffle Senses Spa Fitness Center		Cruisin' Solo Gathering Cove Cafe		Footprint Analysis Senses Spa Fitness Center								
VIBE 14-17 YEARS OLD	Youth Activities Open House																	Youth Activities Open House		Open for Teens										
EDGE 11-14 YEARS OLD	Youth Activities Open House																	Youth Activities Open House		Open for Tweens										
OCEANEER LAB 3-12 YEARS OLD	Youth Activities Open House & Registration			Youth Activities Tour			Open House																				Youth Activities Open House		Ice Breakers	
OCEANEER CLUB 3-12 YEARS OLD	Open House																	Join the Lion Guard		Youth Activities Open House & Registration		Youth Activities Open House		Pre-School Fun (3-5 Years Old)						

Mandatory Guest Assembly Drill 4:00 pm
 (All Guests must attend)

All ship services will be suspended during this time.

Refer to the posted drill instructions on the back of your stateroom door prior to heading to Deck 4. Please bring your Key to the World Card.

You will not need your life jacket for the Guest Assembly Drill.

Your Assembly Station is indicated on your Key To The World card.

VERY MERRYTIME CRUISES

Evening	7:00	7:15	7:30	7:45	8:00	8:15	8:30	8:45	9:00	9:15	9:30	9:45	10:00	10:15	10:30	10:45	11:00	11:15	11:30	11:45	12:00									
FUNNEL VISION	Frozen Fever (G) Funnel Vision																	Cool Runnings (PG)		Guardians of the Galaxy (PG-13)										
BUENA VISTA THEATRE	Guardians of the Galaxy Vol. 2 (PG-13) Duration: 2 Hours 16 Minutes																	Beauty and the Beast (2017) (PG)		Duration: 2 Hours 9 Minutes										
CHARACTERS																		Pluto Lobby Atrium (P)		Mickey Lobby Atrium (P)										
FUN FOR ALL AGES	Mickey Mania D Lounge																				Family Dance Party D Lounge		Family Karaoke D Lounge							
	Disney Vacation Club Members Preview Azure			Live Music with Sunshine Duo Promenade Lounge																	Live Music with Sunshine Duo Promenade Lounge									
ADULTS	Pub Quiz Crown & Fin Pub			Live Music with Christopher Yates Cadillac Lounge																	Bernadett Bihari LIVE Cadillac Lounge		1820 Society: Stir it, Blend it, Taste it. Cove Cafe				Cruise Staff DJ Azure		Late Night Piano with Christopher Yates Cadillac Lounge	
VIBE 14-17 YEARS OLD	Meet Your Counselors			Ninja			Profiles			Ice Breakers			The Download			Ultimate Challenge														
EDGE 11-14 YEARS OLD	Wii Challenge			GAGA Ball			Profiles			Ice Breakers			Taking it to The Edge			Heroes and Villains														
OCEANEER LAB 3-12 YEARS OLD	Meet Your Counselors			Oceaneer Rangers			Lava Flow			GAGA Ball																				
OCEANEER CLUB 3-12 YEARS OLD	Go Fetch			Welcome Party			MARVEL Super Hero Academy Avengers Assemble			Once Upon a Time			Game Challenge																	

DRINK OF THE DAY
 Bay Breeze (Alcoholic)
 Princess Delight (Non-Alcoholic)



Fold along the dotted lines and take me with you so you don't miss any of the fun!



YOUTH ACTIVITIES OPEN HOUSE
 A non-secured program with activities for families, adults and children to enjoy together.

FRIDAY, NOVEMBER 17, 2017 - GALVESTON, TEXAS

Be our Guest!

WELCOME ABOARD SHOW

Featuring



The Physical Comedy of
Heath Hyche



The Magic, Comedy & Balloons of
John Cassidy

WALT DISNEY THEATRE

Deck 4, Forward
6:15 pm & 8:30 pm

As a courtesy to all Guests, we kindly advise that the saving of seats is not permitted in the Walt Disney Theatre.

Assistance is available at the entrance to the Walt Disney Theatre 30 minutes prior to show time.

Character Meet & Greet Ticket Distribution

Port Adventures Desk, Deck 3, Midship - 12:00 pm - 2:00 pm

For Guests who did not reserve meet and greets online, a limited number of tickets are available today to meet some of your favorite Disney friends.

Princess Gathering ~ Frozen Meet and Greet

Disney Jr. Character Breakfast

Tickets are required for each of these meet and greets.
Space is limited.

Character Appearances

ADVENTURES AWAY

Deck 9 Stage - 4:30 pm

MICKEY MOUSE

Lobby Atrium (P)
5:15 pm & 10:15 pm

PLUTO

Lobby Atrium (P)
5:45 pm & 9:45 pm

MICKEY'S TREE LIGHTING MAGIC

Lobby Atrium - 7:30 pm



(S) Starboard Side - (P) Port Side

For details of daily Disney character appearances, refer to the character line on your Navigator Grid, or the digital character board in the Lobby Atrium.

Lines close 15 minutes after advertised start time.

SHIP DIRECTORY

YOUTH ACTIVITIES

DISNEY'S OCEANEER CLUB	DECK 5, MID	12:00 PM - 4:30 PM	3:30 PM - 12:00 AM
DISNEY'S OCEANEER LAB	DECK 5, MID	12:00 PM - 4:30 PM	3:30 PM - 12:00 AM
EDGE	DECK 9, MID	12:00 PM - 4:30 PM	3:30 PM - 12:00 AM
IT'S A SMALL WORLD NURSERY	DECK 5, AFT	12:00 PM - 5:30 PM	3:30 PM - 11:00 PM
VIBE	DECK 10, MID	12:00 PM - 4:30 PM	3:30 PM - 1:00 AM

POOLS

Children under 12 years of age must have adult supervision in all pools.

AQUALAB	DECK 9, AFT	12:00 PM - 4:30 PM	3:30 PM - 6:00 PM
DORY'S REEF	DECK 9, AFT	12:30 PM - 4:30 PM	3:30 PM - 6:00 PM
GOOFY'S POOL	DECK 9, MID	12:00 PM - 6:00 PM	3:30 PM - 10:00 PM
QUIET COVE POOL (18+)	DECK 9, FWD	12:00 PM - 4:30 PM	3:30 PM - 11:00 PM
TWIST N' SPOUT	DECK 9, AFT	12:00 PM - 4:30 PM	3:00 PM - 6:00 PM

Please note, "selfie sticks" are not permitted in any aquatic area.
Complimentary pool vests are available for children to use in the pools onboard.
They are located on the pool deck.

RECREATION

CHILL SPA	DECK 9, FWD	12:00 PM - 4:30 PM	10:00 PM - 8:30 PM
PORT ADVENTURES DESK	DECK 3, MID	12:00 PM - 4:30 PM	3:30 PM - 8:30 PM
SENSES FITNESS CENTER (18+)	DECK 9, FWD	12:00 PM - 4:30 PM	10:00 PM - 12:00 AM
WIDE WORLD OF SPORTS DECK	DECK 10, FWD	12:00 PM - 4:30 PM	3:30 PM - 12:00 AM

GENERAL INFORMATION

BUENA VISTA THEATRE	DECK 5, AFT	SHOWTIMES
CONNECT@SEA DESK	DECK 3, AFT	1:00 PM - 7:00 PM
		4:00 PM - 10:00 PM
DISNEY VACATION CLUB DESK	DECK 4, MID	5:00 PM - 7:00 PM
DISNEY VACATION PLANNING DESK	DECK 4, MID	7:00 PM - 8:00 PM
FUNNEL VISION	DECK 9, MID	SHOWTIMES
GUEST SERVICES	DECK 3, MID	24 HOURS
HAIR BRAIDING	DECK 9, MID	1:00 PM - 4:30 PM
MEDICAL HEALTH CENTER	DECK 1, FWD	4:30 PM - 7:00 PM
PORT SHOPPING DESK	DECK 3, MID	7:00 PM - 5:30 PM
PRELUDES	DECK 4, FWD	5:30 PM - 12:00 PM
SENSES SPA AND SALON	DECK 9, FWD	12:00 PM - 6:00 PM
SHUTTERS PHOTO GALLERY	DECK 4, AFT	6:00 PM - 10:00 PM
WALT DISNEY THEATRE	DECK 4, FWD	SHOWTIMES

SHOPPING

ART GALLERY	DECK 4, MID	7:00 PM - 5:00 PM
BIBBIDI BOBBIDI BOUTIQUE	DECK 10, FWD	12:00 PM - 5:00 PM
		3:00 PM - 9:00 PM
MICKEY'S MAINSAIL	DECK 4, FWD	6:00 PM - 5:00 PM
QUACKS	DECK 9, MID	6:00 PM - 11:00 PM
SEA TREASURES	DECK 3, FWD	6:15 PM - 6:00 PM
WHITE CAPS	DECK 4, FWD	6:00 PM - 11:00 PM

TIME ZONE CHANGE

Remember to turn your clocks **FORWARD 1 HOUR** upon retiring on **FRIDAY** evening, or first thing **SATURDAY** morning.



Evening Attire Cruise Casual

Weather Forecast Today: Partly Sunny High: 74° F/23° C

DINING & LOUNGES

LUNCH

CABANAS	DECK 9, AFT	12:00 PM - 4:30 PM	3:00 PM - 6:00 PM
DAISY'S DE LITES	DECK 9, AFT	12:00 PM - 4:30 PM	3:30 PM - 6:00 PM
PINOCCHIO'S PIZZERIA	DECK 9, MID	12:00 PM - 4:30 PM	3:30 PM - 6:00 PM
PETE'S BOILER BITES	DECK 9, AFT	12:00 PM - 4:30 PM	3:30 PM - 6:00 PM
TRITON'S	DECK 3, MID	11:45 AM - 4:30 PM	1:30 PM - 3:30 PM

DINNER

ANIMATOR'S PALATE	DECK 4, AFT	5:45 PM & 6:00 PM	8:15 PM - 9:30 PM
PALO (18+)	DECK 10, AFT	6:00 PM - 6:00 PM	8:30 PM - 9:30 PM
PETE'S BOILER BITES	DECK 9, AFT	6:00 PM - 5:45 PM	9:30 PM - 8:15 PM
TIANA'S PLACE	DECK 3, AFT	5:45 PM & 5:45 PM	8:15 PM - 8:15 PM
TRITON'S	DECK 3, MID	5:45 PM & 5:45 PM	8:15 PM - 8:15 PM

LATE NIGHT SNACKS

CROWN & FIN PUB (18+ AFTER 9:00 PM)	DECK 3, FWD	10:30 PM - 9:30 PM	11:30 PM - 11:30 PM
PINOCCHIO'S PIZZERIA	DECK 9, MID	9:30 PM - 4:30 PM	12:00 PM - 11:30 PM
PROMENADE LOUNGE	DECK 3, AFT	10:30 PM - 4:30 PM	11:30 PM - 11:30 PM

ADDED FEATURES

BEVERAGE STATION	DECK 9, AFT, PORT SIDE	24 HOURS
EYE SCREAM	DECK 9, MID	12:00 PM - 4:30 PM
		3:30 PM - 11:00 PM
ROOM SERVICE	DIAL 4330	24 HOURS

ENTERTAINMENT - LOUNGES - BARS

Adults must be 21 and older to consume alcoholic beverages.

AZURE (18+ AFTER 9:00 PM)	DECK 3, FWD	7:30 PM - 6:00 PM	1:30 AM - 12:30 AM
CADILLAC LOUNGE (18+)	DECK 3, FWD	6:00 PM - 11:45 AM	12:00 AM - 12:00 AM
COVE CAFE (18+)	DECK 9, MID	11:45 AM - 6:00 PM	12:00 AM - 12:00 AM
CROWN & FIN PUB (18+ AFTER 9:00 PM)	DECK 3, FWD	6:00 PM - 11:45 AM	12:00 AM - 12:00 AM
D LOUNGE	DECK 4, MID	SHOWTIMES	SHOWTIMES
PINOCCHIO'S PIZZERIA	DECK 9, MID	11:45 AM - 5:30 PM	12:00 AM - 9:30 PM
PRELUDES	DECK 4, FWD	5:30 PM - 11:45 AM	12:00 AM - 12:00 AM
PROMENADE LOUNGE	DECK 3, AFT	11:45 AM - 11:45 AM	10:30 PM - 6:00 PM
SIGNALS (18+)	DECK 9, FWD	11:45 AM - 11:45 AM	10:30 PM - 6:00 PM
SULLEY'S SIPS	DECK 9, MID	11:45 AM - 11:45 AM	6:00 PM - 6:00 PM

Public Health Advisory: Consuming raw or under-cooked meats, poultry, seafood, shellfish, or eggs may increase your risk for food borne illness, especially if you have certain medical conditions.

Disney CRUISE LINE.
PORT ADVENTURES

Explore and more with our carefully selected Port Adventures. Visit the Port Adventures Desk, Deck 3, Midship to find out more.

IMPORTANT NUMBERS

Fire/Security: 7-3001
Medical EMERGENCY: 7-3000
Health Center: 7-1927