

VOYAGE NAVIGATOR

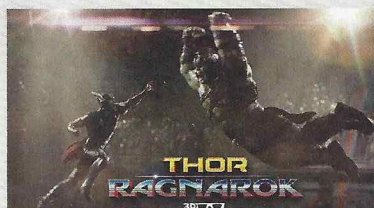


FRIDAY
OCTOBER 27, 2017
TO
FRIDAY
NOVEMBER 10, 2017

WEEK 2

CRUISE HIGHLIGHTS

FRIDAY
DAY AT SEA
Attire: Cruise Casual



THOR: RAGNAROK - (PG-13) - 3D
Walt Disney Theatre
5:15 pm & 8:30 pm

SATURDAY
PANAMA CANAL
Attire: Semi Formal



CREW TALENT SHOW
Walt Disney Theatre
6:15 pm & 8:30 pm

SUNDAY
CARTAGENA
All Ashore: 9:30 am
All Aboard: 5:45 pm
Attire: Pirate or Cruise Casual



SHOWTIME: JOHN CHARLES
Walt Disney Theatre
6:15 pm & 8:30 pm

MONDAY
DAY AT SEA
Attire: Cruise Casual



FROZEN, A MUSICAL SPECTACULAR
Walt Disney Theatre
6:00 pm & 8:30 pm

TUESDAY
GEORGE TOWN, GRAND CAYMAN
All Ashore: 8:00 am
All Aboard: 3:00 pm
Attire: Formal



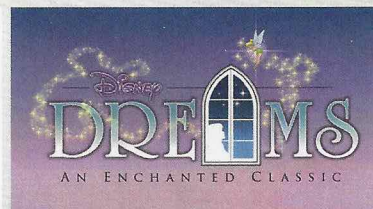
SHOWTIME: JENN GAMBATESE
Walt Disney Theatre
6:15 pm & 8:30 pm

WEDNESDAY
COZUMEL
All Ashore: 9:00 am
All Aboard: 3:45 pm
Attire: Cruise Casual



SHOWTIME: KYLE KNIGHT & MISTIE
Walt Disney Theatre
6:15 pm & 8:30 pm

THURSDAY
DAY AT SEA
Attire: Cruise Casual



DISNEY DREAMS: AN ENCHANTED CLASSIC
Walt Disney Theatre
6:15 pm & 8:30 pm

Subject to change.

PANAMA CANAL

Stretching approximately 48 miles long, the Panama Canal is an international water passage between North and South America that connects the Atlantic to the Pacific. The canal passes through the Isthmus of Panama, allowing sea voyagers to save precious travel time and resources. A masterful feat of engineering, this legendary waterway is revered as one of the 7 wonders of the modern world. However, the "Path between the Seas" is not a natural wonder, it's a man-made triumph involving a series of lifts and lock gates made to raise ships and transport them through the waterway.

As you travel through the Panama Canal, have your camera at the ready! Bordered by lush, tropical rainforests, the canal is a spectacular sight full of photographic potential.

For those who can't make it out on deck, Bridge camera and Panama Canal narration is available on Channel 27-1.

FACTS ABOUT THE ORIGINAL PANAMA CANAL

- The official opening of the Panama Canal was August 15, 1914.
- The 50-mile long passage created an important shortcut for ships traveling between New York and California trimming nearly 8,000 miles from their voyage.
- Between 12,000 & 15,000 ships cross the Panama Canal every year.
- Every ship that transits the canal must pay a toll based on its size and cargo volume. Tolls for large ships can be as high as \$450,000.
- The lowest toll ever paid was \$0.36 cents by Richard Haliburton who swam the canal.
- A system of locks raises each ship 85 feet above sea level.

FACTS ABOUT THE NEW PANAMA CANAL

- The Panama Canal expansion started in 2007 and was completed in June 2016.
- The estimated cost of building the new locks was \$5.25 billion dollars.
- The allowed length of ships increased from 965 feet to 1200 feet. The allowed width of ships increased from 106 feet to 160 feet.
- The new lock chambers are 180 feet wide, 1,400 feet long and 60 feet deep.
- The new lock chambers hold 65% more water than the original locks and use 7% less water per transit.
- The total annual tonnage traveling through the Panama Canal will increase from 275 million tons to 600 million tons.
- The Disney Wonder was the first passenger ship to navigate entirely through the new locks - Aqua Clara and Cocoli.



Create the most memorable experiences during your Disney Cruise Line vacation with Port Adventures! Our Port Adventures are designed for you to see the best our ports have to offer. Stop by the Port Adventures Desk, Deck 3, Midship where our friendly team will be happy to assist you plan your adventure!

There is an adventure for everyone on your Disney Wonder® vacation.

IMPORTANT NUMBERS

Fire/Security: 7-3001

Medical Emergency: 7-3000

Health Center: 7-1927

ADULT ACTIVITY HIGHLIGHTS



1820 SOCIETY (GUESTS 18-20 YEARS ONLY)

1820 Society is an exclusive option for young adult Guests. Come meet fellow passengers and learn about the excellent activities that the Disney Wonder offers to create the perfect cruise experience.



ANYONE CAN COOK

Every Chef has a specialty, and ours is no exception. Get a taste of perfection with each recipe.



80'S FLASHBACK

The 80's are back! Join your Cruise Staff team, in testing your 80's knowledge in this high energy 80's revival.



Senses Spa & Salon has a variety of seminars and fitness classes available throughout the cruise. Pamper yourself with therapeutic spa treatments of heat, steam, rain and water in luxurious and tranquil private rooms. Deck 9, Forward.

BEVERAGE SEMINARS

Your Beverage team has a host of tastings and seminars to entertain and educate you. Stop by Promenade Lounge, Deck 3, Aft to pre-book these experiences (nominal fee applies).

Mixology - Stem to Stern Wine Tasting - Martini Tasting - Champagne Tasting

Beer Tasting - Cognac Tasting - Whisky Tasting

Tequila & Margarita Tasting - Chocolate & Liquor Tasting - Rum Tasting

FUN FOR ALL AGES HIGHLIGHTS



A PIRATES LIFE FOR ME

Calling all Pirates, we be! If ye have an adventurous spirit or pirate savvy, come spin the "Wheel of Destiny" fer a treasure trove of fun be ripe for the takin' in this action packed pirate game show.



CHIP-IT GOLF (12+)

It's par for the course for our Guests 12 and older to compete on our special "greens" in this fun tournament.



CLUB D DANCE PARTY

Join your Cruise Staff as we turn D Lounge into an electrifying family nightclub. Club D, where everyone is a VIP!



DISNEY CHANNEL ON DECK

Don't change that channel! It's time for a Disney Channel afternoon poolside! Your Cruise Staff will host an exciting day of games and contests in between your favorite Disney Channel shows! So sit back, relax, and enjoy the sun!



DISNEY VACATION CLUB GROUP PREVIEW

Want to learn more about taking magical vacations year after year? Please see a Disney Vacation Club representative on Deck 4, Midship, or call 7-2805 from your stateroom phone for more information about our interactive group presentation.



FAMILY SUPERSTAR KARAOKE

Join your Cruise Staff and sing along to your favorite song, fun for everyone.



FAMILY TALENT SHOW SIGN UP

Pre-register at the Port Adventures Desk, Deck 3, Midship. Let your family take center stage and strut their stuff. Everyone has a talent, it's time to show off yours! Pre-register at the Port Adventures Desk.



FRIENDSHIP ROCKS

Come and celebrate with all the children from the Oceaneer Club and Oceaneer Lab in the Jammin' performance of Friendship Rocks! You won't want to miss any of the fun.

GAMESHOW: THE FEUD

"Survey Says" you'll have a fantastic time with our version of a classic game.

GAMESHOW: THE WHEEL

A special version of this popular TV game show.



JACKPOT BINGO

CASH prizes and raffle prizes to be won in our family friendly Bingo sessions with your Cruise Staff. Those under the age of 18 must be accompanied by an adult to play!



PIRATES IN THE CARIBBEAN DECK PARTY

Yer Disney Friends are all set for a swashbucklin' good time! It's a Pirate Celebration, me hearties! Hoist yourself to Deck 9 to enjoy a rowdy buccaneer bash we call Pirates IN the Caribbean Deck Party.



PIXAR PALS PARTY

Join your favorite Pixar characters for the ultimate dance party in the Atrium.



SO YOU THINK YOU KNOW YOUR FAMILY?

This fun-filled family game show is always full of surprises. Find out how well you know, or don't know your family!



WHO WANTS TO BE A MOUSEKETEEER?

Your chance to get into the "hot seat" and win limited edition prizes. Or, play along as part of our live studio audience.



'TIL WE MEET AGAIN

The world-famous Disney Characters and some of your new friends from the Disney Wonder stage shows bid you a charming farewell.

FEATURED VARIETY ACTS THIS VOYAGE



THE MUSICAL TALENTS OF ABSOLUTE JOURNEY

Absolute Journey Tribute brings a faithful reproduction of the Journey live show with outstanding vocals as sung by Riccardo Curzi. His vocal talents are one of the closest things you will ever hear compared to Steve Perry. The band complements him with amazing backing vocals and wows the audience with an exciting and energetic live performance enriched by audience interactivity and true-to-the-original costume changes.



THE MUSIC & COMEDY OF JOHN CHARLES

John Charles has been performing all around the United States, Canada and Europe for most of his professional life and has established himself as one of the most sought after entertainers. With just his guitar and his incredible singing voice, John will amaze you with his ability to combine music, comedy and audience interaction.



THE MAGIC & ILLUSION OF KYLE KNIGHT & MISTIE

Illusionists Kyle Knight and Mistie have headlined in casinos around the world from Las Vegas to Macau, and are regular performers at the famed Magic Castle in Hollywood. Recently featured on multiple TV shows including *Now You See It* and Penn & Teller: *Fool Us*. Together this husband and wife duo showcase one-of-a-kind illusions, and allow their audience to get up close and involved in ways they've never seen before.



THE VOCAL TALENTS OF DISNEY THEATRICAL STAR JENN GAMBATESE

Featuring the vocal talents of Disney Theatrical star Jenn Gambatese who originated the role of Jane Porter in Disney's *Tarzan* on Broadway.



THE COMEDY OF WAYNE COTTER

Wayne Cotter is a top nationally touring comedian and was nominated as "Best Standup Comedian" in the American Comedy Awards. Wayne has been a frequent guest of Jay Leno and David Letterman and a fixture on the national comedy circuit. Wayne brings his clean, relatable standup comedy to audiences nationwide.

YOUTH ACTIVITIES INFO & HIGHLIGHTS



Dine & Play

A convenience for families dining at 8:15 pm, our Youth Activities counselors will be available at 9:15 pm at the entrance of Triton's, Tiana's Place and Animator's Palate dining rooms to bring registered children to join the fun in the Youth Activities areas.

Pre-School Fun

Disney's Oceaneer Club is reserved for only those between 3-5 years of age. This is a time for them to become acclimated to Disney's Oceaneer Club, make new friends and join in on a lot of fun-filled programs and activities. Please note after Pre-School Fun has concluded, Disney's Oceaneer Club will be open for Secured Programming for ages 3-12.

Youth Activities Open House

Open House is an opportunity for all to come and participate in a variety of exciting activities and free time in the Oceaneer Club, Oceaneer Lab, Edge and Vibe throughout the cruise. During these times secured programming will still be offered in the other venue for those looking to check their children into care.

Youth Activities Venue Tour

Come and take a tour of Disney's Oceaneer Club and Disney's Oceaneer Lab. This informative tour will give you the information you need to know about our exciting spaces and activities offered for children ages 3-12. Please see your Personal Navigator or the Navigator App for times.



3 - 12 years old

MOUSEKETEER TRAINING

Take part in training exercises to become an Official Mouseketeer.

ONCE UPON A TIME

Join our Storybook Maker for a magical, musical story featuring a Disney Princess!

STAR COMMAND'S SPACE RANGER TRAINING

Follow in the footsteps of Buzz Lightyear as you learn what it takes to become a Space Ranger for Star Command.



3 - 12 years old

4TH PIGS PASTA PALACE

Build your very own house made out of pasta and play-doh for Franco, the Fourth Little Pig, to see if it will withstand nature's forces.

PISTON CUP CHALLENGE

It's Dinoco time and you're part of the pit crew! Design your own race car and see if you've got what it takes to end up in the winner's circle!

SO YOU WANT TO BE A PIRATE?

Have you learned about life on the high seas? Do you have what it takes to be a pirate? Join Captain Hook and friends to find out!



11 - 14 years old

GLOW JAM

Join us for a glow-in-the-dark party with lots of games, fun and dancing for all.

TWEEN YOU & I SUPER SPIN

Parents - you're invited to the tween only space! Play games with your kids, have fun and see why your tween is living on the Edge!



14 - 17 years old

HOMECOMING

Come and join your fellow teens in our very own version of "Homecoming", and dance the night away.

MAKE A SHOW DISNEY STYLE

OPEN CALL - kids needed for a fun, one of a kind, make it your own show. Working in teams you'll have everything you need to make your own show in 90 minutes or less. Whether you're a Beauty or a Beast, you're sure to have fun!

BUENA VISTA THEATRE

Deck 5, Aft

FEATURE MOVIES THIS VOYAGE

FRIDAY - DAY AT SEA

8:30 am	G	Hercules	
10:30 am	PG-13	Thor: The Dark World	
12:45 pm	PG	The Rocketeer	
3:15 pm	PG	Treasure Planet with Ron Clements Introduction	
5:15 pm	PG-13	Thor: Ragnarok	
8:30 pm	PG-13	Thor: Ragnarok	cc Open Captioning
11:15 pm	G	Born in China	

SATURDAY - PANAMA CANAL

8:30 am	G	Treasure Planet	
10:30 am	G	Cars 3	3D
12:45 pm	PG-13	Thor: Ragnarok	
3:15 pm	PG-13	Pirates of the Caribbean: Dead Men Tell No Tales	
5:45 pm	PG	Beauty and the Beast (2017)	
8:30 pm	PG	Beauty and the Beast (2017)	
11:00 pm	PG-13	Thor: Ragnarok	3D

SUNDAY - CARTAGENA

12:30 pm	PG-13	Gravity	
2:30 pm	PG	Beauty and the Beast (2017)	3D
5:00 pm	PG-13	Guardians of the Galaxy Vol. 2	
7:45 pm	PG-13	Guardians of the Galaxy Vol. 2	
11:00 pm	PG-13	Pirates of the Caribbean: Dead Men Tell No Tales	cc Open Captioning

MONDAY - DAY AT SEA

8:30 am	G	Born in China	
12:30 pm	PG-13	Rogue One: A Star Wars Story	cc Open Captioning
3:30 pm	PG	The Princess and the Frog with Ron Clements Introduction	
5:45 pm	PG-13	Pirates of the Caribbean: Dead Men Tell No Tales	
8:30 pm	PG-13	Pirates of the Caribbean: Dead Men Tell No Tales	
11:00 pm	PG-13	Gravity	

TUESDAY - GRAND CAYMAN

12:00 pm	PG	Beauty and the Beast (2017)	
3:00 pm	PG-13	Pirates of the Caribbean: Dead Men Tell No Tales	
5:45 pm	PG	The Rocketeer	
8:15 pm	PG	The Rocketeer	
10:30 pm	PG-13	Guardians of the Galaxy Vol. 2	

WEDNESDAY - COZUMEL

12:30 pm	PG	Who Framed Roger Rabbit	
2:45 pm	PG-13	Guardians of the Galaxy Vol. 2	cc Open Captioning
5:30 pm	PG-13	Thor: Ragnarok	
8:30 pm	PG-13	Thor: Ragnarok	
11:00 pm	PG-13	Pirates of the Caribbean: Dead Men Tell No Tales	3D

THURSDAY - DAY AT SEA

8:30 am	PG	The Princess and the Frog	
10:30 am	PG	Beauty and the Beast (2017)	
1:00 pm	PG-13	Thor: Ragnarok	cc Open Captioning
3:30 pm	PG	Moana with Ron Clements Introduction	
6:00 pm	G	Born in China	
8:30 pm	G	Born in China	
10:15 pm	PG-13	Thor: Ragnarok	

Subject to change.

MORE TO ENJOY ONBOARD

NEW FALL 2018 ITINERARIES

New Fall 2018 Itineraries announced! Set sail for spectacular ports including first time sailing to Bermuda and Quebec City, Canada. Disney Cruise Line will continue sailing to sun-soaked destinations including Bahamian, Caribbean and even Baja cruises! Visit the Disney Vacation Planning desk, Deck 4, Midship for more information. Disney Vacation Planning tends to get busy on the last day of sailing. Don't miss the opportunity to plan your next Disney vacation.

DISNEY VACATION CLUB® GROUP PREVIEW

Want to learn more about taking magical vacations year after year? Please see a Disney Vacation Club Cast Member on Deck 4, Midship, or call 7-2805 from your stateroom phone for more information about our interactive group presentation.

PORT SHOPPING INFORMATION

Meet Michael, your Port Shopping Guide, for hints, tips and know how when it comes to shopping ashore this cruise! Michael has great recommendations for the whole family and will show you how to maximize your time in our ports of call with money saving tips! Visit Michael at the Port Shopping Desk, Deck 3, Midship between 7:30 pm & 8:30 pm tonight for a free gift.

Connect@Sea

We are now offering a NEW and improved Internet service to stay connected on your cruise like no other in the industry! Internet packages range from \$0.25 per MB - \$89.00 (1000 MB package). For more information contact your Connect@Sea Expert or Guest Services onboard.

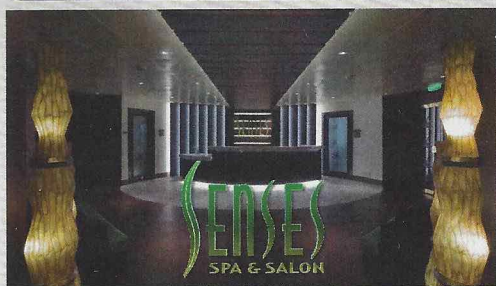
RELIGIOUS SERVICES

Groups who need a location to practice their faith may contact Guest Services for availability information.

RETURN OF STAR WARS™ DAY AT SEA

Get ready for a vacation that's out of this world! Disney Cruise Line presents the return of Star Wars™ Day at Sea. Sail during January - April 2018 aboard the Disney Fantasy. One Epic Day. Fifteen legendary sailings. Visit the Disney Vacation Planning desk, Deck 4, Midship for more information. Disney Vacation Planning tends to get busy on the last day of sailing. Don't miss the opportunity to plan your next Disney vacation.

SENSES SPA & SALON



DECK 9, FORWARD
Extension 7-1465

RAINFOREST

Come enjoy our serenity lounge, with heated chairs, dry sauna, aromatherapy steam rooms and rainfall, misting showers.

REJUVENATION SPA CONSULTATIONS

Ready to enhance your natural beauty? Book your free Facial Rejuvenation consultation with our Rejuvenation Dr. at the Senses Spa.

ONBOARD ACUPUNCTURE

Acupuncture is a safe and effective medicine that allows your body to heal itself, and is effective for various health conditions. See your onboard Acupuncturist for your free consultation.

IONITHERMIE

Lose between 1 – 8 inches? Speed up your metabolism. Firm muscle tone. Improve appearance of cellulite. \$155/1 session or \$299/3 sessions.

AN 18% AUTO GRATUITY IS ADDED TO ALL SENSES SPA SERVICES.

MERCHANDISE SHOPPING



DECK 4, FORWARD

EFFY JEWELRY COLORS OF WONDER DESIGNER EVENT

Showcasing over 1500 unique and colorful styles at direct-from-manufacturer pricing. White Caps, Deck 4, Forward

THE DISNEY PARKS COLLECTION BY PANDORA JEWELRY

The Disney Parks Collection by PANDORA Jewelry features hand-finished .925 sterling silver and 14K gold charms inspired by some of Disney's most beloved characters. Visit White Caps on Deck 4, Forward, where you'll find a specially designed sterling silver charm featuring a Disney Cruise Line ship.

COLLECT YOUR DISNEY CRUISE LINE MEMORIES

Store the many happy memories you've photographed while on your Disney cruise inside a 2017 Disney Cruise Line photo album and scrapbook, available in Mickey's Mainsail, Deck 4, Forward.

THOMAS KINKADE: HIDDEN CHARACTER CHALLENGE!

Known as the "Painter of Light," Thomas Kinkade is one of Disney's most celebrated artists having created an array of enchanting artwork. Stop by the Vista Gallery today to view his unique collection of paintings featuring some of your favorite Disney characters! Deck 4, Midship.

DUE TO PORT REGULATIONS, WHEN THE SHIP IS DOCKED, THE STORES WILL REMAIN CLOSED.

SHUTTERS PHOTO GALLERY



DECK 4, AFT

PANAMA CANAL CROSSING PHOTOS

Get out and about. Your professional photographers will be available on Decks 9 and 10 to take pictures of family, friends and your favorite Disney characters with the Panama Canal in the background – weather permitting.

GET THE PICTURE!

Take home all your stateroom photos from this cruise on a USB! Terms and conditions apply. Visit Shutters on Deck 4, Aft and ask your friendly Shutter staff for more information. Get The Picture! Hurry! Order yours now.

PHOTO BOOK

Turn your magical vacation memories into an impressive keepsake with a personalized PhotoBook. Order by 9:30 pm on the final night of the cruise.

PRIVATE STUDIO PORTRAITURE

Book our exclusive and contemporary Private Studio experience today and capture these memories. No obligation to purchase.

PHOTOS ARE AVAILABLE FOR VIEWING ON OUR INTERACTIVE PHOTO KIOSKS APPROXIMATELY FIVE HOURS AFTER BEING TAKEN AND ARE ONLY AVAILABLE FOR PURCHASE DURING THIS CRUISE.

IMPORTANT INFORMATION

Security Notice

All Guests (including children) who wish to disembark the ship are required to present their Key to the World card at the gangway. A photo ID is also required for those Guests who are 18 years of age or older. Guests under the age of 18 are required to have a parent, guardian or other responsible adult sign an authorization form at the Guest Service Desk if they wish to go ashore unaccompanied or with any adult from another stateroom.

Inclement Weather

For the safety of all Guests, outdoor events may be changed due to unforeseen weather conditions.

Insect Repellent Advisory

The Centers for Disease Control and Prevention recommends wearing long-sleeved shirts and pants along with insect repellent to protect against mosquito bites and related illnesses when going ashore. Complimentary insect repellent is available on the pier as you exit the ship. Insect repellent is also available for purchase in White Caps. When using both sunscreen and insect repellent, use sunscreen first and apply insect repellent on top of sunscreen.

Corridor Quiet Hours

As a courtesy to all our Guests, please recognize quiet hallway hours from 10:00 pm til 8:00 am.

Environmental Message

With Disney's commitment to the Environment, please refrain from throwing anything over the Ship's side. Thank you!

No Reserved Seats Policy

As a courtesy to all our Guests, we kindly advise that the saving of seats is not permitted in the Walt Disney Theatre, and the saving of the sun loungers is not permitted on Deck 9 and 10. Items left unattended will be returned to lost and found at Guest Services, Deck 3 Midship.

Cold and Flu Reminder

Please wash hands frequently and thoroughly; particularly before meals. Contact the Health Center by dialing 7-1927, should anyone in your party become ill.

Smoking

For the comfort of our Guests, the following areas are designated as smoking areas:

*Deck 9, Forward, Port Side by *Deck 4, aft, port side from 6:00 pm to 6:00 am only (all of Deck 4 is non-smoking from 6:00 am to 6:00 pm) Smoking is prohibited inside all Guest staterooms and on stateroom verandahs. Guests found smoking in their staterooms or on their verandahs will be charged a \$250 stateroom recovery fee. Electronic cigarettes may only be used in designated smoking areas.

Walt Disney Theatre

Theatrical performances may use artificial fog, strobe lights, pyrotechnics and other special effects. For the safety of our performers and the comfort of those around you, the use of any photography, video recording device or any electronic equipment is prohibited.

Verandah Safety

Please do not leave any personal items on your verandah that may be blown overboard or present a fire hazard if left unattended. Guests should not sit, lean or climb on the railing or leave children unattended on the verandah. Do not open the verandah and stateroom doors simultaneously as this may create a wind effect and could cause the doors to slam unexpectedly.

PERSONAL NAVIGATOR






Evening Attire: Cruise Casual

WEATHER | Today: Partly Sunny
FORECAST | High: 82°F/28°C

FRIDAY, NOVEMBER 3, 2017

DAY AT SEA

Morning	8:30	8:45	9:00	9:15	9:30	9:45	10:00	10:15	10:30	10:45	11:00	11:15	11:30	11:45	12:00	12:15	12:30	12:45	1:00	1:15	1:30			
FUNNEL VISION	Pocahontas (G) Open Captioning Funnel Vision					Mulan (G) Open Captioning Funnel Vision										Disney Channel on Deck Funnel Vision		Descendants (TV-G) Open Captioning Funnel Vision						
BUENA VISTA THEATRE	Hercules (G) Duration: 1 Hour 33 Minutes							Thor: The Dark World (PG-13) Duration: 1 Hour 52 Minutes							The Rocketeer (PG) Duration: 1 Hour 48 Minutes									
CHARACTERS					Minnie DK4 Mid (S)						Minnie DK4 Mid (S)						Goofy Gazebo DK 9				Belle DK4 Mid (S)			
					Daisy DK4 Mid (S)						Daisy DK4 Mid (S)								Chip & Dale Gazebo DK 9		Pluto Gazebo DK 9			
FUN FOR ALL AGES	Good Morning Disney Wonder Channel 22-1 Repeated 6:00am - 12:00 pm		Toddler Time Promenade Lounge		 Walt Disney Theatre				Hide and Seek with the Officers Azure				Cruisin' for Trivia Promenade Lounge		VentriQuism Workshop with Michael Harrison Azure				Treasure Planet: The Making of a Futuristic Space Tale featuring Ron Clements Walt Disney Theatre					
	Photo Challenge of the Day Available at the Port Adventures Desk				Animation: Minnie Promenade Lounge		Animation: Daisy Promenade Lounge		Crafts: Origami Frogs Promenade Lounge						Disney Vacation Club Group Preview D Lounge		Crafts: 3D Dumbo Crafts Promenade Lounge							
ADULTS	Friends of Bill W. Cadillac Lounge		Power Walking Club Preludes		Informal Card Play Crown & Fin Pub				 D Lounge - Curry Chicken				Theme Parks Crown & Fin Pub		Napkin Folding Animator's Palate		Live Music with Ed Harvey Quiet Cove Pool							
			Boot Camp (Nom. Fee) Senses Spa Fitness Center																					
VIBE 14-17 YEARS OLD											Youth Activities Open House				Teen Choice				Sports Deck Fun					
EDGE 11-14 YEARS OLD								Youth Activities Open House								Animation Cells								
OCEANEER LAB 3-12 YEARS OLD																	Lunch							
OCEANEER CLUB 3-12 YEARS OLD													Once Upon a Time				Youth Activities Open House							

Afternoon	1:45	2:00	2:15	2:30	2:45	3:00	3:15	3:30	3:45	4:00	4:15	4:30	4:45	5:00	5:15	5:30	5:45	6:00	6:15	6:30	6:45
FUNNEL VISION							Tangled: Before Ever After (G) Funnel Vision						The Incredibles (PG) Open Captioning Funnel Vision						Toy Story 3 (G) Open Captioning Funnel Vision		
BUENA VISTA THEATRE							Treasure Planet - With Introduction from Ron Clements (PG) Duration: 1 Hour 35 Minutes						Thor: Ragnarok (PG-13) Duration: 2 Hours 10 Minutes								
CHARACTERS	Ariel DK4 Mid (S)				Minnie Gazebo DK 9				Stitch Lobby Atrium (P)				Minnie & Daisy Preludes				Mickey, Donald & Goofy Lobby Atrium (P)				Pluto Preludes
FUN FOR ALL AGES	Fox Trot with Willem & Natalia Azure		Improv 101 Workshop D Lounge		Bingo Pre Sales		Panama Jackpot BINGO Azure		Toddler Time Promenade Lounge		Jewish Sabbath Cadillac Lounge (Guest Led)		Family Animation Promenade Lounge		Christopher Yates LIVE Cadillac Lounge						
ADULTS	Animation Class Animator's Palate		Team Trivia Crown & Fin Pub		Martini Tasting (21+) Cadillac Lounge		Informal Card Play Crown & Fin Pub														
VIBE 14-17 YEARS OLD	Sports Deck Fun		Dive into DJ'ing		Smoothie Time		Youth Activities Open House		Homework Help												
EDGE 11-14 YEARS OLD	Brains and Brawns		Game Challenge		Picture This		Sports Deck Fun		Homework Help		Youth Activities Open House										
OCEANEER LAB 3-12 YEARS OLD	Open House		Stitch's Space Goo		Youth Activities Open House		Detective School		Dinner												
OCEANEER CLUB 3-12 YEARS OLD			Jessie and the Mystery of the Missing Gold		S.H.I.E.L.D. Secret Agent 101		Pre-School Fun (3-5 Years Old)		Youth Activities Open House												

Evening	7:00	7:15	7:30	7:45	8:00	8:15	8:30	8:45	9:00	9:15	9:30	9:45	10:00	10:15	10:30	10:45	11:00	11:15	11:30	11:45	12:00				
FUNNEL VISION					WALL-E (G) Open Captioning Funnel Vision								Ant-Man (PG-13) Open Captioning Funnel Vision												
BUENA VISTA THEATRE									Thor: Ragnarok (PG-13) Open Captioning Duration: 2 Hours 10 Minutes								Born in China (G) Duration: 1 Hour 21 Minutes								
CHARACTERS			Chip & Dale Preludes	Black Widow DK4 Mid (S)					Captain America DK4 Mid (S)				Mickey, Donald, Goofy Lobby Atrium (P)												
			Minnie & Daisy Lobby Atrium (P)		Pluto Lobby Atrium (P)						Chip & Dale DK5 Mid (S)		Black Widow DK4 Mid (S)	Spider-Man DK4 Mid (S)											
FUN FOR ALL AGES			Mainstage Cabaret Azure																						
			Seriously?! D Lounge				Family Animation Promenade Lounge				Tribute to Michael Jackson with Sunshine Duo Promenade Lounge				Live Music with Sunshine Duo Promenade Lounge										
			80's Music Trivia Crown & Fin Pub				Live Music with Christopher Yates Cadillac Lounge				Live Music with The Brace Boys Cadillac Lounge				Live Music with The Brace Boys Cadillac Lounge		Mainstage Cabaret Azure		Cruise Staff DJ Azure						
ADULTS			Music from the Movies with Christopher Yates Cadillac Lounge																1820 Society: Chip-It Golf Lobby Atrium						
VIBE 14-17 YEARS OLD	Shooting Stars												That's Hilarious								Talent Show Prep				
EDGE 11-14 YEARS OLD	Youth Activities Open House												Talent Show Prep				Sports Deck Fun				Tween Choice				
OCEANEER LAB 3-12 YEARS OLD	Animation Antics						Mickey Mania				Aloha Luau				Youth Activities Open House										
OCEANEER CLUB 3-12 YEARS OLD	Open House		Super Hero Origins: Captain America																						

Yellow Bird (Alcoholic)
Espresso Chiller (Non-Alcoholic)
DRINK OF THE DAY

Fold along the dotted lines and take me with you so you don't miss any of the fun!

FOLD

YOUTH ACTIVITIES OPEN HOUSE
A non-secured program with activities for families, adults and children to enjoy together.

FRIDAY, NOVEMBER 3, 2017 - DAY AT SEA



THOR RAGNAROK

(PG-13) 2 Hours 10 Minutes

WALT DISNEY THEATRE

Deck 4, Forward
5:15 pm & 8:30 pm

As a courtesy to all Guests, we kindly advise that the saving of seats is not permitted in the Walt Disney Theatre.

Assistance is available at the entrance to the Walt Disney Theatre 30 minutes prior to show time.

Character Appearances

MINNIE MOUSE

DK4 Mid (S)
9:15 am & 10:15 am
Gazebo DK 9 - 2:00 pm

DAISY DUCK

DK4 Mid (S)
9:45 am & 10:45 am

GOOFY

Gazebo DK 9 - 12:30 pm

CHIP & DALE

Gazebo DK 9 - 1:00 pm
Preludes - 7:30 pm
DK5 Mid (S) - 9:45 pm

BELLE

DK4 Mid (S) - 1:15 pm

PLUTO

Gazebo DK 9 - 1:30 pm
Preludes - 5:15 pm
Lobby Atrium (P) - 8:00 pm

ARIEL

DK4 Mid (S) - 1:45 pm

STITCH

Lobby Atrium (P) - 3:30 pm

SPIDER-MAN

DK4 Mid (S)
4:00 pm & 10:30 pm

MINNIE & DAISY

Preludes - 4:45 pm
Lobby Atrium (P) - 7:30 pm

BLACK WIDOW

DK4 Mid (S)
4:45 pm, 7:45 pm & 10:00 pm

MICKEY, DONALD & GOOFY

Lobby Atrium (P)
5:00 pm & 10:00 pm

CAPTAIN AMERICA

DK4 Mid (S)
5:15 pm & 9:30 pm



(S) Starboard Side - (P) Port Side

For details of daily Disney character appearances, refer to the character line on your Navigator Grid, or the digital character board in the Lobby Atrium.
Lines close 15 minutes after advertised start time.

SHIP DIRECTORY

YOUTH ACTIVITIES

DISNEY'S OCEANEER CLUB	DECK 5, MID	9:00 AM - 12:00 AM
DISNEY'S OCEANEER LAB	DECK 5, MID	11:00 AM - 12:00 AM
IT'S A SMALL WORLD NURSERY	DECK 5, AFT	9:00 AM - 11:00 PM
EDGE	DECK 9, MID	10:00 AM - 1:00 AM
VIBE	DECK 11, MID	11:00 AM - 2:00 AM

POOLS

Children under 12 years of age must have adult supervision in all pools.

AQUALAB	DECK 9, AFT	9:00 AM - 6:00 PM
DORY'S REEF	DECK 9, AFT	9:00 AM - 6:00 PM
GOOFY'S POOL	DECK 9, MID	9:00 AM - 10:00 PM
TWIST N' SPOUT	DECK 9, AFT	9:00 AM - 6:00 PM
QUIET COVE POOL (18+)	DECK 9, FWD	7:00 AM - 12:00 AM

Please note, "selfie sticks" are not permitted in any aquatic area.

Complimentary pool vests are available for children to use in the pools onboard.

They are located on the pool deck.

RECREATION

CHILL SPA	DECK 9, FWD	8:00 AM - 10:00 PM
PORT ADVENTURES DESK	DECK 3, MID	10:00 AM - 5:00 PM
SENSES FITNESS CENTER (18+)	DECK 9, FWD	6:00 AM - 10:00 PM
WIDE WORLD OF SPORTS DECK	DECK 10, FWD	- 24 HOURS

GENERAL INFORMATION

BUENA VISTA THEATRE	DECK 5, AFT	SHOWTIMES
CONNECT@SEA DESK	DECK 3, AFT	9:00 AM - 12:00 PM 1:00 PM - 4:00 PM 7:00 PM - 10:00 PM
DISNEY VACATION CLUB DESK	DECK 4, MID	9:00 AM - 11:30 AM 2:00 PM - 10:00 PM
DISNEY VACATION PLANNING DESK	DECK 4, MID	9:00 AM - 12:00 PM 4:00 PM - 6:00 PM 7:30 PM - 9:00 PM
FUNNEL VISION	DECK 9, MID	SHOWTIMES
GUEST SERVICES	DECK 3, MID	24 HOURS
MEDICAL HEALTH CENTER	DECK 1, FWD	9:30 AM - 11:00 AM 4:30 PM - 7:00 PM
PORT SHOPPING DESK	DECK 3, MID	7:00 PM - 8:30 PM
PRELUDES	DECK 4, FWD	5:30 PM - 9:30 PM
SENSES SPA AND SALON	DECK 9, FWD	8:00 AM - 10:00 PM
SHUTTERS PHOTO GALLERY	DECK 4, AFT	10:00 AM - 10:30 PM
WALT DISNEY THEATRE	DECK 4, FWD	SHOWTIMES

SHOPPING

ART GALLERY	DECK 4, MID	2:30 PM - 4:30 PM 7:00 PM - 9:00 PM
BIBBIDI BOBBIDI BOUTIQUE	DECK 10, FWD	12:00 PM - 9:00 PM
MICKEY'S MAINSAIL	DECK 4, FWD	9:00 AM - 10:30 PM
QUACKS	DECK 9, MID	
SEA TREASURES	DECK 3, FWD	6:00 PM - 10:00 PM
WHITE CAPS	DECK 4, FWD	9:00 AM - 10:30 PM

Verandah Safety

Please do not leave any personal items on your verandah that may be blown overboard or present a fire hazard if left unattended. Guests should not sit, lean or climb on the railing or leave children unattended on the verandah. Do not open the verandah and stateroom doors simultaneously as this may create a wind effect and could cause the doors to slam unexpectedly.

Environmental Message

With Disney's commitment to the environment, please refrain from throwing anything over the ship's side. Thank you!

Sunscreen/Insect Repellent Advisory

Use sunscreen first and protect against mosquito bites and related illnesses by applying insect repellent on top of sunscreen when going ashore. Insect repellent is available for purchase in White Caps.

Smoking

For the comfort of our guests, the following areas are designated as smoking areas:

- Deck 9 Forward, Port Side
- Deck 4, Starboard Side from 6:00 pm to 6:00 am only (all of Deck 4 is non-smoking from 6:00 am to 6:00 pm)

Smoking is prohibited inside all guest staterooms and on stateroom verandahs. Guests found smoking in their staterooms or on their verandahs will be charged a \$250 stateroom recovery fee.

DINING & LOUNGES

BREAKFAST

CABANAS	DECK 9, AFT	7:30 AM - 11:30 AM
DAISY'S DE LITES	DECK 9, AFT	7:00 AM - 9:00 AM
TRITON'S (À-LA CARTE)	DECK 3, MID	8:00 AM - 9:30 AM

LUNCH

CABANAS	DECK 9, AFT	11:45 AM - 2:00 PM
DAISY'S DE LITES	DECK 9, AFT	10:30 AM - 6:00 PM
PALO BRUNCH (18+)	DECK 10, AFT	10:00 AM - 12:30 PM
PETE'S BOILER BITES	DECK 9, AFT	10:30 AM - 6:00 PM
PINOCCHIO'S PIZZERIA	DECK 9, MID	10:30 AM - 6:00 PM
TRITON'S	DECK 3, MID	12:00 PM - 1:30 PM

DINNER

ANIMATOR'S PALATE	DECK 4, AFT	5:45 PM & 8:15 PM
CABANAS (À-LA CARTE)	DECK 9, AFT	6:30 PM - 8:30 PM
PALO (18+)	DECK 10, AFT	6:00 PM - 8:30 PM
PETE'S BOILER BITES	DECK 9, AFT	6:00 PM - 9:30 PM
TIANA'S PLACE	DECK 3, AFT	5:45 PM & 8:15 PM
TRITON'S	DECK 3, MID	5:45 PM & 8:15 PM

LATE NIGHT SNACKS

CROWN & FIN PUB (18+ AFTER 9:00 PM)	DECK 3, FWD	10:30 PM - 11:30 PM
PINOCCHIO'S PIZZERIA	DECK 9, MID	9:30 PM - 12:00 AM
PROMENADE LOUNGE	DECK 3, AFT	10:30 PM - 11:30 PM

ADDED FEATURES

BEVERAGE STATION	DECK 9, AFT, PORT SIDE	24 HOURS
EYE SCREAM	DECK 9, MID	10:30 AM - 11:00 AM
ROOM SERVICE	DIAL 4330	24 HOURS

ENTERTAINMENT - LOUNGES - BARS

Adults must be 21 and older to consume alcoholic beverages.

AZURE (18+ AFTER 9:00 PM)	DECK 3, FWD	7:30 PM - 1:30 AM
CADILLAC LOUNGE (18+)	DECK 3, FWD	6:00 PM - 12:30 AM
COVE CAFE (18+)	DECK 9, MID	6:30 AM - 12:00 AM
CROWN & FIN PUB (18+ AFTER 9:00 PM)	DECK 3, FWD	12:30 PM - 12:00 AM
D LOUNGE	DECK 4, MID	SHOWTIMES
PINOCCHIO'S PIZZERIA	DECK 9, MID	9:30 AM - 12:00 AM
PRELUDES	DECK 4, FWD	5:30 PM - 9:30 PM
PROMENADE LOUNGE	DECK 3, AFT	8:00 AM - 12:00 AM
SIGNALS (18+)	DECK 9, FWD	9:30 AM - 10:00 PM
SULLEY'S SIPS	DECK 9, MID	7:30 AM - 6:00 PM

Public Health Advisory: Consuming raw or under-cooked meats, poultry, seafood, shellfish, or eggs may increase your risk for food borne illness, especially if you have certain medical conditions.

SPECIALS OF THE DAY

Senses Spa & Salon - Rejuvenation Spa Consultations

Ready to enhance your natural beauty? Book your free Facial Rejuvenation consultation with our Rejuvenation Doctor at Senses Spa, Deck 9, Forward.

Effy Jewelry Colors of Wonder Designer Event

Showcasing over 1500 unique and colorful styles at direct-from-manufacturer pricing. White Caps, Deck 4, Forward.

Shutters - Private Studio Portraiture

Book our exclusive and contemporary Private Studio experience today and capture these memories. No obligation to purchase.

IMPORTANT NUMBERS

Fire/Security:	7-3001
Medical Emergency:	7-3000
Health Center:	7-1927