

VOYAGE NAVIGATOR



FRIDAY
OCTOBER 27, 2017

TO

FRIDAY
NOVEMBER 10, 2017

WEEK 1

CRUISE HIGHLIGHTS

FRIDAY SAN DIEGO

Port Departure: 5:00 pm
All Aboard: 4:00 pm
Attire: Cruise Casual



BE OUR GUEST - WELCOME ABOARD SHOW
Walt Disney Theatre
6:15 pm & 8:30 pm

SATURDAY

DAY AT SEA
Attire: Formal



SHOWTIME: THE FILHARMONIC
Walt Disney Theatre
6:15 pm & 8:30 pm

SUNDAY

CABO SAN LUCAS
All Ashore: 9:00 am
All Aboard: 4:30 pm
Attire: Cruise Casual



SHOWTIME: SHAWN FARQUHAR
Walt Disney Theatre
6:15 pm & 8:30 pm

MONDAY

PUERTO VALLARTA
All Ashore: 10:30 am
All Aboard: 3:45 pm
Attire: Cruise Casual



SHOWTIME: MICHAEL HARRISON
Walt Disney Theatre
6:15 pm & 8:30 pm

TUESDAY

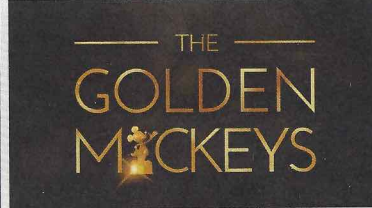
DAY AT SEA
Attire: Halloween/ Cruise Casual



THE NIGHTMARE BEFORE CHRISTMAS - 3D
Walt Disney Theatre
6:00 pm & 8:30 pm

WEDNESDAY

DAY AT SEA
Attire: Cruise Casual



THE GOLDEN MICKEYS
Walt Disney Theatre
6:15 pm & 8:30 pm

THURSDAY

DAY AT SEA
Attire: Cruise Casual



SHOWTIME: ABSOLUTE JOURNEY
Walt Disney Theatre
6:15 pm & 8:30 pm

Subject to change.

WELCOME ABOARD!

YOUR STATEROOM & LUGGAGE

Staterooms will be ready at 1:30 pm. To allow your Stateroom Host/ess time to prepare your room, please do not remove the blue stanchion straps. Stateroom hosts will deliver luggage throughout the day until 5:30 pm.

STATEROOMS WITH BUNK BEDS

Bunk beds are recessed into the ceiling and will be prepared during evening turndown service by your Stateroom Host/ess.

STATEROOM SAFE

Each stateroom is equipped with a secured storage safe. Instructions for use are located on the safe.

TO CHANGE DINING ASSIGNMENT

Requests for different seating times will be taken today:

- 12:30 pm - 3:30 pm; Book in D Lounge, Deck 4, Midship or please dial 7-10891 and leave a voicemail.

PALO DINING RESERVATIONS

Reservations are required and will be taken on a first come basis today:

- 12:30 pm - 3:30 pm; Book in D Lounge, Deck 4, Midship or please dial 7-6843 and leave a voicemail.

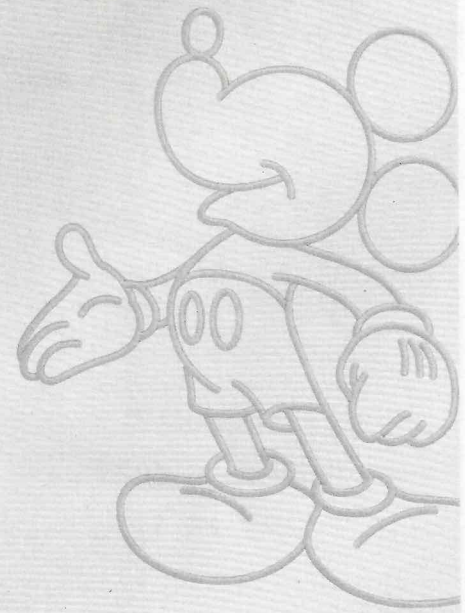
Adult Exclusive Dining Opportunity! Guests are invited to make 2 dinner reservations at our adult-exclusive restaurant, Palo. This includes one reservation on embarkation evening and one more on another night of the cruise. Reservations are subject to availability and a specialty dining charge will apply.

DINNER

5:45 pm - First seating 8:15 pm - Second seating

Please check your Key To The World Card for details of your dining rotation, and bring them to your specific dining location. There is no need to wait in line prior to dinner. Dining Rooms open at designated seating times and your table is reserved each night of your cruise.

AP = Animator's Palate, Deck 4, Aft TR = Triton's, Deck 3, Midship TP = Tiana's Place, Deck 3, Aft



Create the most memorable experiences during your Disney Cruise Line vacation with Port Adventures! Our Port Adventures are designed for you to see the best our ports have to offer. Stop by the Port Adventures Desk, Deck 3, Midship where our friendly team will be happy to assist you plan your adventure!

There is an adventure for everyone on your Disney Wonder® vacation.



IMPORTANT NUMBERS

Fire/Security: 7-3001

Medical Emergency: 7-3000

Health Center: 7-1927

ADULT ACTIVITY HIGHLIGHTS



1820 SOCIETY (GUESTS 18-20 YEARS ONLY)

1820 Society is an exclusive option for young adult Guests. Come meet fellow passengers and learn about the excellent activities that the Disney Wonder offers to create the perfect cruise experience.



ANYONE CAN COOK

Every Chef has a specialty, and ours is no exception. Get a taste of perfection with each recipe.



MATCH YOUR MATE

It's time to play everyone's favorite couples game show, Match Your Mate!



Senses Spa & Salon has a variety of seminars and fitness classes available throughout the cruise. Pamper yourself with therapeutic spa treatments of heat, steam, rain and water in luxurious and tranquil private rooms. Deck 9, Forward.

BEVERAGE SEMINARS

Your Beverage team has a host of tastings and seminars to entertain and educate you. Stop by D Lounge, Deck 4, Midship to pre-book these experiences (nominal fee applies).
Mixology - Stem to Stern Wine Tasting - Martini Tasting - Champagne Tasting
Beer Tasting - Cognac Tasting - Whisky Tasting
Tequila & Margarita Tasting - Chocolate & Liquor Tasting - Rum Tasting

FEATURED VARIETY ACTS THIS VOYAGE



FEATURING THE A CAPPELLA MUSICAL BAND, THE FILHARMONIC

The Filharmonic, a Los Angeles-based a cappella group who were featured in NBC'S hit musical competition, The Sing-Off, has much to sing about. The 5-piece vocal group made the semi-finals, joined The Sing-Off national tour, and were featured in the Universal Pictures hit movie, Pitch Perfect 2, then became a viral sensation after their Late Late Show appearance.



THE MAGIC AND COMEDY OF SHAWN FARQUHAR

Shawn is a two-time world champion of magic. His magic has been seen on television shows like the X-Files and Highlander, and in Motion Pictures like Spooky House and the Fly II. Shawn offers a fast paced, audience participation experience. His show is filled with incredible magic, gut busting humor and his dynamic personality which has earned him over 500 standing ovations!



THE VENTRILOQUISM & COMEDY OF MICHAEL HARRISON

Michael Harrison is an extraordinarily talented ventriloquist, puppeteer and comedian. He has worked along side numerous acts from The Muppets to Boyz II Men. Michael wrote and starred in the award winning television show, "Kids in the Firehall," which was awarded the prestigious Bronze Apple Award. He took his talents to a new level when he appeared on "America's Got Talent." He finished as one of the finalists and received glowing reviews from the celebrity judges.



THE JUGGLING & COMEDY OF JEFF TAVEGGIA

Jeff Taveggia is a uniquely talented performer whose original juggling and comedy show has dazzled audiences around the globe. Jeff began his career working with the Ringling Bros. & Barnum and Bailey circus, after graduating with honors from the famous Clown College. Early on he developed a friendly and engaging performing style that appeals to people of all ages. Juggling everything from cocktail shakers to machetes, he quickly captures the attention of his audience.



THE MUSICAL TALENTS OF ABSOLUTE JOURNEY

Absolute Journey Tribute brings a faithful reproduction of the Journey live show with outstanding vocals as sung by Riccardo Curzi. His vocal talents are one of the closest things you will ever hear compared to Steve Perry. The band complements him with amazing backing vocals and wows the audience with an exciting and energetic live performance enriched by audience interactivity and true-to-the-original costume changes.

FUN FOR ALL AGES HIGHLIGHTS



ADVENTURES AWAY

Earn your status as V.I.P. sailors as your Cruise Director, your Disney Pals, and the Cruise Staff officially begin your "Adventures Away".

BOAT BUILDING BASH SIGN-UPS

Is your team up to the challenge to build your own boat? It will take imagination and creativity.



DISNEY VACATION CLUB GROUP PREVIEW

Want to learn more about taking magical vacations year after year? Please see a Disney Vacation Club representative on Deck 4, Midship, or call 7-2805 from your stateroom phone for more information about our interactive group presentation.



FAMILY TALENT SHOW SIGN UP

Pre-register at the Port Adventures Desk, Deck 3, Midship. Let your family take center stage and strut their stuff. Everyone has a talent, it's time to show off yours! Pre-register at the Port Adventures Desk.



FREEZING THE NIGHT AWAY WITH ANNA, ELSA AND FRIENDS!

It's a Big Summer Blowout! Come join some of your favorite Frozen friends and Arendelle's royal party planners on Deck 9 for the best deck celebration on this side of the fjord! (Weather Permitting)



JACKPOT BINGO

CASH prizes and raffle prizes to be won in our family friendly Bingo sessions with your Cruise Staff. Those under the age of 18 must be accompanied by an adult to play!



MICKEY MANIA

Join us for the ultimate test of your Disney knowledge as we play our live, interactive game show, that's "insania!"



SALUDOS AMIGOS FIESTA

Come see what Donald and his friends are up to this time. Bring the family out to this interactive dance party featuring fun Latin music! Your family will learn to salsa, merengue and just have a Latin good time!



WHO WANTS TO BE A MOUSEKETEE?

Your chance to get into the "hot seat" and win limited edition prizes. Or, play along as part of our live studio audience.

HALLOWEEN ON THE HIGH SEAS HOLIDAY HIGHLIGHTS



HAUNTED STORIES OF THE SEA

Join our Sea Captain for the Halloween tradition of telling ghostly tales of the strange, bizarre and just plain scary that will leave even the bravest of souls with a chill.



HALLOWEEN ISN'T JUST FOR KIDS (18+)

The trendy dance club for adults becomes the hangout for the dark side of Disney. Flaunt your wild side and compete in our adults only costume contest. We hope to see you scaring up some fun on the dance floor. Trick or Treat isn't just for Kids...anymore.



MICKEY'S MOUSE-QUERADE PARTY

Enjoy a fun trick or treat "Mouse-Querade" featuring music, games, a visit from some of your favorite Disney Pals in their Halloween costumes and of course treats. Please remember, masks that completely cover a person's face may only be worn when standing still at character photo locations and must be carried when moving around the ship. We also ask that you choose costumes that are not obstructive or offensive.



THE PUMPKIN TREE

Do you know why we celebrate Halloween or carve jack-o-lanterns? Join the Caretaker at the Pumpkin Tree, and hear some fun stories and customs of Halloween. Don't forget your pumpkin seed, we promise a ghostly good time.



TIM BURTON'S THE NIGHTMARE BEFORE CHRISTMAS SING AND SCREAM

You're invited to a special presentation of Tim Burton's popular classic, presented in 3-D. Featuring state-of-the-art projection, sound and in-theatre effects, you become part of the experience, as you sing and scream along. You never know who may show up.

YOUTH ACTIVITIES INFO & HIGHLIGHTS



Dine & Play

A convenience for families dining at 8:15 pm, our Youth Activities counselors will be available at 9:15 pm at the entrance of Triton's, Tiana's Place and Animator's Palate dining rooms to bring registered children to join the fun in the Youth Activities areas.

Pre-School Fun

Disney's Oceaneer Club is reserved for only those between 3-5 years of age. This is a time for them to become acclimated to Disney's Oceaneer Club, make new friends and join in on a lot of fun-filled programs and activities. Please note after Pre-School Fun has concluded, Disney's Oceaneer Club will be open for Secured Programming for ages 3-12.

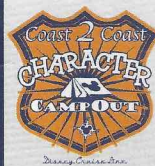
Youth Activities Open House

Open House is an opportunity for all to come and participate in a variety of exciting activities and free time in the Oceaneer Club, Oceaneer Lab, Edge and Vibe throughout the cruise. During these times secured programming will still be offered in the other venue for those looking to check their children into care.

Youth Activities Venue Tour

Come and take a tour of Disney's Oceaneer Club and Disney's Oceaneer Lab. This informative tour will give you the information you need to know about our exciting spaces and activities offered for children ages 3-12. Please see your Personal Navigator or the Navigator App for times.

COAST TO COAST CHARACTER CAMP OUT



Pick up your tickets today to reserve your place for the Youth Activities Coast To Coast Campout. This overnight event will be happening on Thursday, Nov 2nd at 10:00 pm and will be an opportunity to participate in activities throughout the evening and have a bedtime story read to your child in Disney's Oceaneer Club by a very special visitor. These tickets are on a first come first serve basis, so book your tickets now at the Port Adventures Desk, Deck 3 Midship to not miss out on this magical event. (Please note that all children ages 3-12 are able to participate in the event activities 10:00 pm - 11:30 pm in the Oceaneer Club. Tickets are only required for children ages 5-12 who wish to participate in the overnight sleepover.)



3 - 12 years old

MICKEY AND THE ROADSTER RACERS - CRUISE LINE CUP

Mickey Mouse invites you to build and race your own roadster racer as you compete to win the Cruise Line Cup!

TOY STORY BOOT CAMP

Join Corporal Green in our own version of boot camp as we learn how to have fun - The Toy Story way!



3 - 12 years old

LAVA FLOW

Build your own volcano and watch it erupt as you learn about the physics of volcanoes.

OCEANEER RANGERS

Put your teamwork to the test in this challenge.



11 - 14 years old

TAKING IT TO THE EDGE

Come to Edge and get all the info you need to squeeze every bit of fun out of your stay onboard.

HEROES AND VILLAINS

Join your favorite hero or villain team on a series of activities that will take place throughout the cruise.



14 - 17 years old

THE DOWNLOAD

Come up to Vibe and help plan all the fun activities you will be doing this cruise with your new friends!

SHOOTING STARS

Are you ready for your close-up? Come and assist in the production of your very own motion picture.

BUENA VISTA THEATRE

Deck 5, Aft

FEATURE MOVIES THIS VOYAGE

FRIDAY - SAN DIEGO

5:15 pm	PG-13	Pirates of the Caribbean: Dead Men Tell No Tales
8:00 pm	PG-13	Pirates of the Caribbean: Dead Men Tell No Tales
10:30 pm	G	Born in China

SATURDAY - DAY AT SEA

8:30 am	G	Cars 3	Open Captioning
1:00 pm	PG	Beauty and the Beast (2017)	3D
3:30 pm	PG	Who Framed Roger Rabbit	
5:45 pm	PG	Moana	
8:15 pm	PG	Moana	
10:30 pm	PG	Disney's Newsies the Broadway Musical	

SUNDAY - CABO SAN LUCAS

12:00 pm	PG	The Rocketeer	
3:00 pm	G	Cars 3	3D
5:45 pm	PG-13	Thor	
8:15 pm	PG-13	Thor	
10:30 pm	PG-13	Guardians of the Galaxy Vol. 2	3D

MONDAY - PUERTO VALLARTA

12:15 pm	G	Disney's Broadway Hits at Royal Albert Hall	
3:00 pm	PG-13	Guardians of the Galaxy Vol. 2	
6:00 pm	PG-13	Gravity	
8:30 pm	PG-13	Gravity	
10:30 pm	PG-13	Thor	

TUESDAY - DAY AT SEA

8:30 am	PG	Moana	Open Captioning
10:45 am	G	Born in China	Open Captioning
12:45 pm	PG	Disney's Newsies the Broadway Musical	
3:30 pm	G	The Little Mermaid with Ron Clements Introduction	
5:45 pm	G	Cars 3	
8:15 pm	G	Cars 3	
10:30 pm	PG-13	Rogue One: A Star Wars Story	

WEDNESDAY - DAY AT SEA

8:30 am	G	The Little Mermaid	
10:15 am	PG	Beauty and the Beast (2017)	Open Captioning
12:45 pm	PG-13	Thor	
3:30 pm	G	Aladdin with Ron Clements Introduction	
5:45 pm	PG-13	Thor: The Dark World	
8:15 pm	PG-13	Thor: The Dark World	
10:30 pm	G	Disney's Broadway Hits at Royal Albert Hall	

THURSDAY - DAY AT SEA

8:30 am	G	Aladdin	
10:30 am	G	Cars 3	3D
12:45 pm	G	Disney's Broadway Hits at Royal Albert Hall	
3:30 pm	G	Hercules with Ron Clements Introduction	
5:45 pm	PG	Who Framed Roger Rabbit	
8:15 pm	PG	Who Framed Roger Rabbit	
10:30 pm	PG-13	Thor: The Dark World	

Subject to change.

MORE TO ENJOY ONBOARD

NEW SPRING 2019 ITINERARIES

New Spring 2019 Itineraries announced! Set sail for favorite tropical destinations as Disney Cruise Line will return to The Bahamas, Caribbean and even Baja cruises! Visit the Disney Vacation Planning Desk, Deck 4, Midship for more information. Disney Vacation Planning tends to get busy on the last day of sailing. Don't miss the opportunity to plan your next Disney vacation.

DISNEY VACATION CLUB® GROUP PREVIEW

Want to learn more about taking magical vacations year after year? Please see a Disney Vacation Club Cast Member on Deck 4, Midship, or call 7-2805 from your stateroom phone for more information about our interactive group presentation.

PORT SHOPPING INFORMATION

Come and meet Michael, your Port Shopping Guide, at the Port Shopping Desk, Deck 3, Midship from 7:00 pm - 8:30 pm for a complimentary charm. Don't miss the Port Shopping Talk on Day at Sea 1, Buena Vista Theatre, Deck 5, Aft, at 11:00 am for all of your Port Shopping information and to enter a raffle for a chance to win a Diamond Pendant. Tune into Channel 24-6 all cruise long for more Port Shopping information

Connect@Sea

FREE INTERNET EMBARKATION DAY SPECIAL

Sign up for a free 50 MB Internet package today and enjoy it throughout the cruise! This offer is only available from noon to midnight on the day your cruise begins. On your wireless device, simply find the "DCL-Guest" Wi-Fi Network, go to www.dclguest.com to create an account, and get your free 50 MB of data to start sharing your memories even before you leave port! If you have any questions, ask our Connect@Sea Expert located at Deck 3, Midship. No purchase necessary. The free 50 MB package can only be used for the duration of the cruise. Only one free package per stateroom, but everyone can share it. Unused data from a package will not be reimbursed and it is non-transferable between voyages or ships.

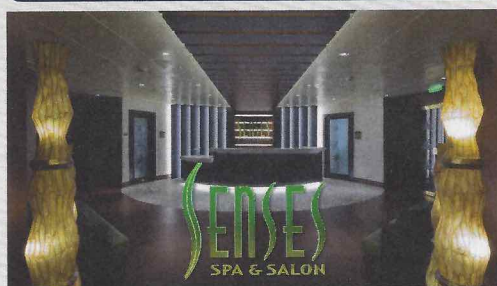
RELIGIOUS SERVICES

Groups who need a location to practice their faith may contact Guest Services for availability information.

ART OF THE THEME SHOW TOUR (18+)

Join us for a guided tour highlighting the design, Imagineering and artistry of the ship. This tour is reserved for Guests 18 and over. Please book at Guest Services, Deck 3, Midship.

SENSES SPA & SALON



DECK 9, FORWARD Extension 7-1465

RAINFOREST

Come enjoy our serenity lounge, with heated chairs, dry sauna, aromatherapy steam rooms and rainfall, misting showers.

14 Day Pass: Couples \$345 Singles \$249

REJUVENATION SPA CONSULTATIONS

Ready to enhance your natural beauty? Book your free Facial Rejuvenation consultation with our Rejuvenation Dr. at the Senses Spa.

ONBOARD ACUPUNCTURE

Acupuncture is a safe and effective medicine that allows your body to heal itself, and is effective for various health conditions. See your onboard Acupuncturist for your free consultation.

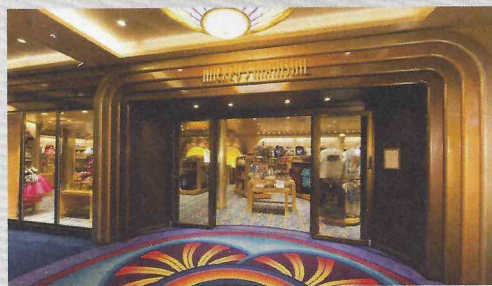
IONITHERMIE

Lose between 1 - 8 inches? Speed up your metabolism. Firm muscle tone.

Improve appearance of cellulite. \$155/1 session or \$299/3 sessions.

AN 18% AUTO GRATUITY IS ADDED TO ALL SENSES SPA SERVICES.

MERCHANDISE SHOPPING



DECK 4, FORWARD

PANAMA CANAL MERCHANDISE 2017

Commemorate this Panama Canal voyage with a specially designed Tervis, magnet, ornament, pin and hat for everyone in the family! White Caps, Deck 4, Forward

THE DISNEY PARKS COLLECTION BY PANDORA JEWELRY

The Disney Parks Collection by PANDORA Jewelry features hand-finished .925 sterling silver and 14K gold charms inspired by some of Disney's most beloved characters. Visit White Caps on Deck 4, Forward, where you'll find a specially designed sterling silver charm featuring a Disney Cruise Line ship.

COLLECT YOUR DISNEY CRUISE LINE MEMORIES

Store the many happy memories you've photographed while on your Disney cruise inside a 2017 Disney Cruise Line photo album and scrapbook, available in Mickey's Mainsail, Deck 4, Forward.

THOMAS KINKADE: HIDDEN CHARACTER CHALLENGE!

Known as the "Painter of Light," Thomas Kinkade is one of Disney's most celebrated artists having created an array of enchanting artwork. Stop by the Vista Gallery today to view his unique collection of paintings featuring some of your favorite Disney characters! Deck 4, Midship.

DUE TO PORT REGULATIONS, WHEN THE SHIP IS DOCKED, THE STORES WILL REMAIN CLOSED.

SHUTTERS PHOTO GALLERY



DECK 4, AFT

WELCOME ABOARD RAFFLE

View your embarkation photos in Shutters, Deck 4, Aft and enter our raffle for a chance to win a 10 Digital Photos valued at \$149.95. Winner must be present at the 10:00 pm drawing in Shutters, Deck 4, Aft. *Terms and conditions apply. Visit Shutters on Deck 4, Aft for more information.

GET THE PICTURE!

Take home all your stateroom photos from this cruise on a USB! Terms and conditions apply. Visit Shutters on Deck 4, Aft and ask your friendly Shutters staff for more information. Get The Picture! Hurry! Order yours now.

PHOTO BOOK

Turn your magical vacation memories into an impressive keepsake with a personalized PhotoBook. Order by 9:30 pm on the final night of the cruise.

PRIVATE STUDIO PORTRAITURE

Book our exclusive and contemporary Private Studio experience today and capture these memories. No obligation to purchase.

PHOTOS ARE AVAILABLE FOR VIEWING ON OUR INTERACTIVE PHOTO KIOSKS APPROXIMATELY FIVE HOURS AFTER BEING TAKEN AND ARE ONLY AVAILABLE FOR PURCHASE DURING THIS CRUISE.

IMPORTANT INFORMATION

Security Notice

All Guests (including children) who wish to disembark the ship are required to present their Key to the World card at the gangway. A photo ID is also required for those Guests who are 18 years of age or older. Guests under the age of 18 are required to have a parent, guardian or other responsible adult sign an authorization form at the Guest Service Desk if they wish to go ashore unaccompanied or with any adult from another stateroom.

Inclement Weather

For the safety of all Guests, outdoor events may be changed due to unforeseen weather conditions.

Insect Repellent Advisory

The Centers for Disease Control and Prevention recommends wearing long-sleeved shirts and pants along with insect repellent to protect against mosquito bites and related illnesses when going ashore. Complimentary insect repellent is available on the pier as you exit the ship. Insect repellent is also available for purchase in White Caps. When using both sunscreen and insect repellent, use sunscreen first and apply insect repellent on top of sunscreen.

Corridor Quiet Hours

As a courtesy to all our Guests, please recognize quiet hallway hours from 10:00 pm til 8:00 am.

Environmental Message

With Disney's commitment to the Environment, please refrain from throwing anything over the Ship's side. Thank you!

No Reserved Seats Policy

As a courtesy to all our Guests, we kindly advise that the saving of seats is not permitted in the Walt Disney Theatre, and the saving of the sun loungers is not permitted on Deck 9 and 10. Items left unattended will be returned to lost and found at Guest Services, Deck 3 Midship.

Cold and Flu Reminder

Please wash hands frequently and thoroughly, particularly before meals. Contact the Health Center by dialing 7-1927, should anyone in your party become ill.

Smoking

For the comfort of our Guests, the following areas are designated as smoking areas:

*Deck 9, Forward, Port Side by
*Deck 4, aft, port side from 6:00 pm to 6:00 am only (all of Deck 4 is non-smoking from 6:00 am to 6:00 pm)
Smoking is prohibited inside all Guest staterooms and on stateroom verandahs. Guests found smoking in their staterooms or on their verandahs will be charged a \$250 stateroom recovery fee. Electronic cigarettes may only be used in designated smoking areas.

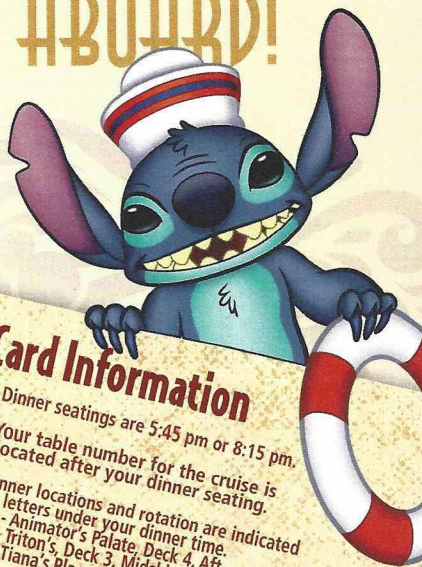
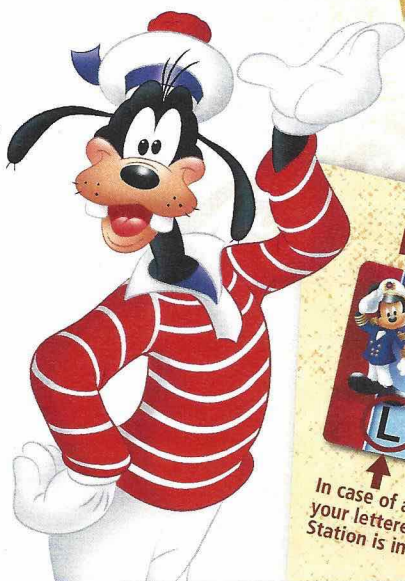
Walt Disney Theatre

Theatrical performances may use artificial fog, strobe lights, pyrotechnics and other special effects. For the safety of our performers and the comfort of those around you, the use of any photography, video recording device or any electronic equipment is prohibited.

Verandah Safety

Please do not leave any personal items on your verandah that may be blown overboard or present a fire hazard if left unattended. Guests should not sit, lean or climb on the railing or leave children unattended on the verandah. Do not open the verandah and stateroom doors simultaneously as this may create a wind effect and could cause the doors to slam unexpectedly.

WELCOME ABOARD!



Key to the World Card Information

Dinner seatings are 5:45 pm or 8:15 pm.

Your table number for the cruise is located after your dinner seating.

Dinner locations and rotation are indicated by letters under your dinner time.

- AP - Animator's Palate, Deck 4, Aft
- TR - Triton's, Deck 3, Midship
- TP - Tiana's Place, Deck 3, Aft

In case of an emergency, your lettered Assembly Station is indicated here.

ADVENTURES AWAY!

FAMILY DECK PARTY

Earn your status as V.I.P. sailors as your Cruise Director, Darren, your Disney Pals, and the Cruise Staff officially begin your "Adventures Away".

Deck 9 Stage, 4:30 pm

DRINK OF THE DAY
Bahama Mama (Alcoholic)
Coco Bali (Non-Alcoholic)

Afternoon	1:45	2:00	2:15	2:30	2:45	3:00	3:15	3:30	3:45	4:00	4:15	4:30	4:45	5:00	5:15	5:30	5:45	6:00	6:15	6:30	6:45
FUNNEL VISION	Tangled (PG) Open Captioning Funnel Vision											Adventures Away Deck 9 Stage									
BUENA VISTA THEATRE												A Bug's Life (G) Open Captioning Funnel Vision									
CHARACTERS												Pirates of the Caribbean: Dead Men Tell No Tales (PG-13) Duration: 2 Hours 9 Minutes									
												Mickey Lobby Atrium (P)									
												Pluto Lobby Atrium (P)									
FUN FOR ALL AGES	Walking Ship Tour Preludes											Chip & Dale DK4 Mid (S)									
	Walking Ship Tour Preludes											Jewish Sabbath Cadillac Lounge (Guest Led)									
ADULTS	Spa Open House Senses Spa Fitness Center											Live Piano with Joe Creamer Lobby Atrium									
	Spa Raffle Senses Spa Fitness Center											MLB World Series: Game 3 - Dodgers vs. Astros Crown & Fin Pub (Subject to Satellite Availability)									
VIBE 14-17 YEARS OLD	Youth Activities Open House											Youth Activities Open House									
EDGE 11-14 YEARS OLD	Youth Activities Open House											Youth Activities Open House									
OCEANEER LAB 3-12 YEARS OLD	Youth Activities Open House											Youth Activities Open House									
OCEANEER CLUB 3-12 YEARS OLD	Youth Activities Open House											Youth Activities Open House									

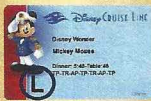
Mandatory Guest Assembly Drill 4:00 pm

(All Guests must attend)

All ship services will be suspended during this time.

Refer to the posted drill instructions on the back of your stateroom door prior to heading to Deck 4. Please bring your Key to the World Card.

You will not need your life jacket for the Guest Assembly Drill.



Your Assembly Station is indicated on your Key To The World card.



Evening	7:00	7:15	7:30	7:45	8:00	8:15	8:30	8:45	9:00	9:15	9:30	9:45	10:00	10:15	10:30	10:45	11:00	11:15	11:30	11:45	12:00
FUNNEL VISION	Frozen Fever (G) Funnel Vision											The Good Dinosaur (PG) Open Captioning Funnel Vision									
BUENA VISTA THEATRE												Maleficent (PG) Open Captioning Funnel Vision									
CHARACTERS	Minnie Preludes											Pluto Lobby Atrium (P)									
	Goofy DK4 Mid (S)											Goofy Preludes									
	Mickey Preludes											Donald Lobby Atrium (P)									
FUN FOR ALL AGES	Family Dance Party Promenade Lounge											Family Dance Party D Lounge									
	Mickey Mania D Lounge											Family Karaoke D Lounge									
	The Promenade Tree Lobby Atrium											Live Music with Ed Harvey Promenade Lounge									
	Disney Vacation Club Members Celebration Azure											Ed Harvey LIVE Promenade Lounge									
ADULTS	MLB World Series: Game 3 - Dodgers vs. Astros < Starts 5:00 pm Crown & Fin Pub (Subject to Satellite Availability)											Live Music with Christopher Yates Cadillac Lounge									
	Live Music with Christopher Yates Cadillac Lounge											Cruise Staff DJ Azure									
VIBE 14-17 YEARS OLD	Ninja											Ice Breakers Azure									
EDGE 11-14 YEARS OLD	GAGA Ball											Profiles									
OCEANEER LAB 3-12 YEARS OLD	Meet Your Counselors											Ice Breakers									
OCEANEER CLUB 3-12 YEARS OLD	Human Bingo											Taking it to The Edge									
	Welcome Party											Game Challenge									
												Youth Activities Open House									
												Once Upon a Time									
												MARVEL Super Hero Academy Avengers Assemble									

Fold along the dotted lines and take me with you so you don't miss any of the fun!

FOLD

YOUTH ACTIVITIES OPEN HOUSE
A non-secured program with activities for families, adults and children to enjoy together.

FRIDAY, OCTOBER 27, 2017 - SAN DIEGO, CALIFORNIA



Be our Guest!
WELCOME ABOARD SHOW
Featuring
The a cappella musical band
The Filharmonic
The Magic & Comedy of
Shawn Farquhar
WALT DISNEY THEATRE
Deck 4, Forward
6:15 pm & 8:30 pm
As a courtesy to all Guests, we kindly advise that the saving of
seats is not permitted in the Walt Disney Theatre.

Character Meet & Greet Ticket Distribution

Port Adventures Desk, Deck 3, Midship - 12:00 pm - 2:00 pm

For Guests who did not reserve meet and greets online, a limited number of tickets are available today to meet some of your favorite Disney friends.

Princess Gathering ~ Frozen Meet and Greet

VIP Character Breakfast

Tickets are required for each of these meet and greets.
Space is limited.

Character Appearances

ADVENTURES AWAY

Deck 9 Stage - 4:30 pm

MICKEY MOUSE

Lobby Atrium (P) - 5:15 pm
Preludes - 8:00 pm

CHIP & DALE

DK4 Mid (S) - 5:30 pm

PLUTO

Lobby Atrium (P)
5:45 pm & 9:30 pm

MINNIE MOUSE

Preludes - 7:30 pm

GOOFY

DK4 Mid (S) - 8:00 pm
Preludes - 9:30 pm

DONALD DUCK

Lobby Atrium (P) - 10:00 pm



(S) Starboard Side - (P) Port Side

For details of daily Disney character appearances, refer to the character line on your Navigator Grid, or the digital character board in the Lobby Atrium.
Lines close 15 minutes after advertised start time.

SHIP DIRECTORY

YOUTH ACTIVITIES

DISNEY'S OCEANEER CLUB	DECK 5, MID	12:30 PM - 3:30 PM 4:30 PM - 12:00 AM
DISNEY'S OCEANEER LAB	DECK 5, MID	12:30 PM - 3:30 PM 4:30 PM - 12:00 AM
EDGE	DECK 9, MID	12:30 PM - 3:30 PM 4:30 PM - 12:00 AM
IT'S A SMALL WORLD NURSERY	DECK 5, AFT	12:30 PM - 3:30 PM 5:30 PM - 11:00 PM
VIBE	DECK 10, MID	12:30 PM - 3:30 PM 4:30 PM - 12:00 AM

POOLS

Children under 12 years of age must have adult supervision in all pools.

AQUALAB	DECK 9, AFT	12:00 PM - 3:30 PM 4:30 PM - 6:00 PM
DORY'S REEF	DECK 9, AFT	12:00 PM - 3:30 PM 4:30 PM - 6:00 PM
GOOFY'S POOL	DECK 9, MID	12:00 PM - 3:30 PM 6:00 PM - 10:00 PM
QUIET COVE POOL (18+)	DECK 9, FWD	12:00 PM - 3:30 PM 4:30 PM - 12:00 AM
TWIST N' SPOUT	DECK 9, AFT	12:00 PM - 3:00 PM 4:30 PM - 6:00 PM

Please note, "selfie sticks" are not permitted in any aquatic area.
Complimentary pool vests are available for children to use in the pools onboard.
They are located on the pool deck.

RECREATION

CHILL SPA	DECK 9, FWD	12:00 PM - 10:00 PM
PORT ADVENTURES DESK	DECK 3, MID	12:00 PM - 3:30 PM 4:30 PM - 8:30 PM
SENSES FITNESS CENTER (18+)	DECK 9, FWD	12:00 PM - 10:00 PM
WIDE WORLD OF SPORTS DECK	DECK 10, FWD	12:00 PM - 3:30 PM 4:30 PM - 12:00 AM

GENERAL INFORMATION

BUENA VISTA THEATRE	DECK 5, AFT	SHOWTIMES
CONNECT@SEA DESK	DECK 3, AFT	1:00 PM - 4:00 PM 7:00 PM - 10:00 PM
DISNEY VACATION CLUB DESK	DECK 4, MID	5:00 PM - 6:00 PM 9:00 PM - 10:00 PM
DISNEY VACATION PLANNING DESK	DECK 4, MID	7:00 PM - 9:00 PM
FUNNEL VISION	DECK 9, MID	SHOWTIMES
GUEST SERVICES	DECK 3, MID	24 HOURS
HAIR BRAIDING	DECK 9, MID	
MEDICAL HEALTH CENTER	DECK 1, FWD	4:30 PM - 7:00 PM
PORT SHOPPING DESK	DECK 3, MID	7:00 PM - 8:30 PM
PRELUDES	DECK 4, FWD	5:30 PM - 9:30 PM
SENSES SPA AND SALON	DECK 9, FWD	12:00 PM - 10:00 PM
SHUTTERS PHOTO GALLERY	DECK 4, AFT	6:00 PM - 10:00 PM
WALT DISNEY THEATRE	DECK 4, FWD	SHOWTIMES

SHOPPING

ART GALLERY	DECK 4, MID	7:00 PM - 9:00 PM
BIBBIDI BOBBIDI BOUTIQUE	DECK 10, FWD	12:00 PM - 3:00 PM 5:00 PM - 9:00 PM
MICKEY'S MAINSAIL	DECK 4, FWD	6:00 PM - 11:00 PM
QUACKS	DECK 9, MID	
SEA TREASURES	DECK 3, FWD	6:00 PM - 10:00 PM
WHITE CAPS	DECK 4, FWD	6:00 PM - 11:00 PM

EVENING ATTIRE Cruise Casual

WEATHER Today: Partly Sunny
FORECAST High: 72°F/22°C

DINING & LOUNGES

LUNCH

CABANAS	DECK 9, AFT	12:00 PM - 3:00 PM
DAISY'S DE LITES	DECK 9, AFT	12:00 PM - 3:30 PM
PINOCCHIO'S PIZZERIA	DECK 9, MID	12:00 PM - 3:30 PM 4:30 PM - 6:00 PM
PETE'S BOILER BITES	DECK 9, AFT	12:00 PM - 3:30 PM 4:30 PM - 6:00 PM
TRITON'S	DECK 3, MID	11:45 AM - 1:30 PM

DINNER

ANIMATOR'S PALATE	DECK 4, AFT	5:45 PM & 8:15 PM
DAISY'S DE LITES	DECK 9, AFT	4:30 PM - 6:00 PM
PALO (18+)	DECK 10, AFT	6:00 PM - 8:30 PM
PETE'S BOILER BITES	DECK 9, AFT	6:00 PM - 9:30 PM
TIANA'S PLACE	DECK 3, AFT	5:45 PM & 8:15 PM
TRITON'S	DECK 3, MID	5:45 PM & 8:15 PM

LATE NIGHT SNACKS

CROWN & FIN PUB (18+ AFTER 9:00 PM)	DECK 3, FWD	10:30 PM - 11:30 PM
PINOCCHIO'S PIZZERIA	DECK 9, MID	9:30 PM - 12:00 AM
PROMENADE LOUNGE	DECK 3, AFT	10:30 PM - 11:30 PM

ADDED FEATURES

BEVERAGE STATION	DECK 9, AFT, PORT SIDE	24 HOURS
EYE SCREAM	DECK 9, MID	12:00 PM - 3:30 PM 4:30 PM - 12:00 AM
ROOM SERVICE	DIAL 4330	24 HOURS

ENTERTAINMENT - LOUNGES - BARS

Adults must be 21 and older to consume alcoholic beverages.

AZURE (18+ AFTER 9:00 PM)	DECK 3, FWD	7:30 PM - 1:00 AM
CADILLAC LOUNGE (18+)	DECK 3, FWD	6:00 PM - 12:00 AM
COVE CAFE (18+)	DECK 9, MID	11:45 AM - 12:00 AM
CROWN & FIN PUB (18+ AFTER 9:00 PM)	DECK 3, FWD	11:45 AM - 12:00 AM
D LOUNGE	DECK 4, MID	SHOWTIMES
PINOCCHIO'S PIZZERIA	DECK 9, MID	11:45 AM - 12:00 AM
PRELUDES	DECK 4, FWD	5:30 PM - 9:30 PM
PROMENADE LOUNGE	DECK 3, AFT	11:45 AM - 12:00 AM
SIGNALS (18+)	DECK 9, FWD	11:45 AM - 10:00 PM
SULLEY'S SIPS	DECK 9, MID	11:45 AM - 6:00 PM

Public Health Advisory: Consuming raw or under-cooked meats, poultry, seafood, shellfish, or eggs may increase your risk for food borne illness, especially if you have certain medical conditions.

Disney CRUISE LINE.
PORT ADVENTURES

Explore and more with our carefully selected
Port Adventures. Visit the Port Adventures Desk,
Deck 3, Midship to find out more.

All Aboard: 4:00 pm

IMPORTANT NUMBERS

Fire/Security: 7-3001
Medical EMERGENCY: 7-3000
Health Center: 7-1927