

VOYAGE NAVIGATOR



SATURDAY
NOVEMBER 11, 2017

TO

SATURDAY
NOVEMBER 18, 2017

CRUISE HIGHLIGHTS

SATURDAY

PORT CANAVERAL: VETERAN'S DAY
Port Departure: 5:00 pm
All Aboard: 3:45 pm
Attire: Cruise Casual



A FANTASY COME TRUE: WELCOME SHOW
Walt Disney Theatre
6:15 pm & 8:30 pm

SUNDAY

DAY AT SEA
Attire: Formal



DISNEY'S ALADDIN
Walt Disney Theatre
6:15 pm & 8:30 pm

MONDAY

COZUMEL
All Ashore: 8:30 am
All Aboard: 4:30 pm
Attire: Cruise Casual



SHOWTIME: MAX WINFREY
Walt Disney Theatre
6:15 pm & 8:30 pm

TUESDAY

GRAND CAYMAN
All Ashore: 10:30 am
All Aboard: 5:30 pm
Attire: Cruise Casual



DISNEY WISHES
Walt Disney Theatre
6:15 pm & 8:30 pm

WEDNESDAY

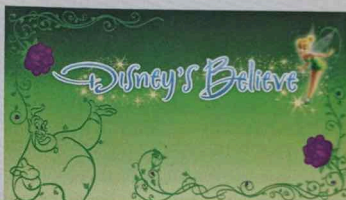
FALMOUTH
All Ashore: 7:30 am
All Aboard: 4:45 pm
Attire: Pirate or Cruise Casual



SHOWTIME: BUCKETS N BOARDS
Walt Disney Theatre
6:15 pm & 8:30 pm

THURSDAY

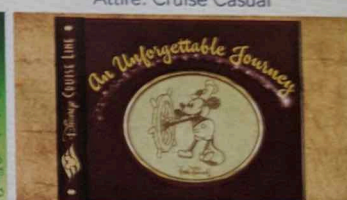
DAY AT SEA
Attire: Semi Formal



DISNEY'S BELIEVE
Walt Disney Theatre
6:15 pm & 8:30 pm

FRIDAY

DISNEY CASTAWAY CAY
All Ashore: 8:30 am
All Aboard: 4:45 pm
Attire: Cruise Casual



AN UNFORGETTABLE JOURNEY
Walt Disney Theatre
6:15 pm & 8:30 pm

Subject to change.

WELCOME ABOARD!

YOUR STATEROOM & LUGGAGE

Staterooms will be ready at 1:30 pm. To allow your Stateroom Host/ess time to prepare your room, please do not remove the blue stanchion straps. Stateroom hosts will deliver luggage throughout the day until 5:30 pm.

STATEROOMS WITH BUNK BEDS

Bunk beds are recessed into the ceiling and will be prepared during evening turndown service by your Stateroom Host/ess.

STATEROOM SAFE

Each stateroom is equipped with a secured storage safe. Instructions for use are located on the safe.

TO CHANGE DINING ASSIGNMENT

Requests for different seating times will be taken today:

- 1:00 pm - 3:15 pm; Book in Royal Court, Deck 3, Midship
- 3:15 pm - 5:00 pm; please dial 7-1831, 7-1832, or 7-1833

EMY & PALO DINING RESERVATIONS

Reservations are required and will be taken on a first come basis today:

- 1:00 pm - 3:15 pm Royal Court, Palo & Remy
- 3:15 - 5:00 pm Please leave a voice mail at 7-9735 for Palo or 7-9734 for Remy.

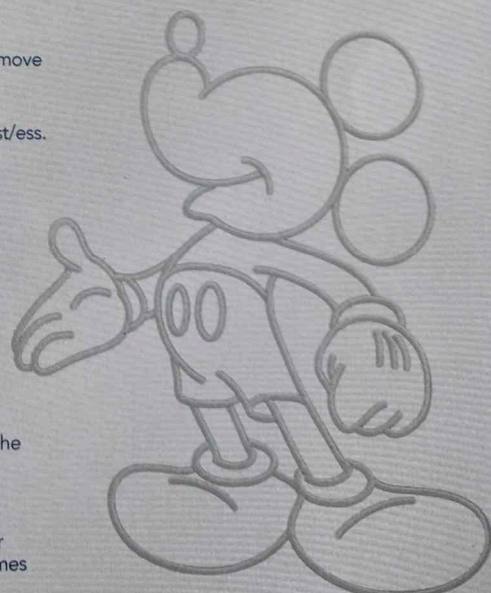
Please dial 7-9734 for Remy or 7-9735 for Palo for more information. Cover charge applicable.
Adult Exclusive Dining Opportunity! Guests are invited to make 2 dinner reservations at our two adult-exclusive restaurants, Palo & Remy. This includes one reservation on embarkation evening and one more on another night of the cruise. Reservations are subject to availability and a specialty dining charge will apply.

DINNER

1:00 pm - First seating 8:15 pm - Second seating
Please check your Key To The World Card or dining tickets for details of your dining rotation, and bring them to your specific dining location. There is no need to wait in line prior to dinner. Dining Rooms open at designated seating times and your table is reserved each night of your cruise.

A = Animator's Palate, Deck 3, Aft E = Enchanted Garden, Deck 2, Midship

R = Royal Court, Deck 3, Midship



Create the most memorable experiences during your Disney Cruise Line vacation with Port Adventures! Our Port Adventures are designed for you to see the best of our ports have to offer. Stop by the Port Adventures Desk, Deck 5, Midship where our friendly team will be happy to assist you plan your adventure!

There is an adventure for everyone on your Disney Fantasy® vacation.



IMPORTANT NUMBERS

Fire/Security: 7-3001

Medical Emergency: 7-3000

Health Center: 7-1927

ADULT ACTIVITY HIGHLIGHTS



1820 SOCIETY (GUESTS 18-20 YEARS ONLY)
1820 Society is an exclusive option for young adult guests. Come meet fellow guests and learn about the excellent activities that the Fantasy offers to create the perfect cruise experience.



80'S MUSIC CHALLENGE
"Moon Walk" back to the 80's as we put your musical knowledge of the decade to the test.

CRUISIN' SOLO GATHERING

Single, single parent or just traveling alone? Join your Cruise Staff for an informal gathering.

DESTINATION: EUROPA

Grab a Europass and wander the melodies of Europe, tasting our various flavors on your way. Let the night's surprises be a compass letting you sample moments of the night.



MATCH YOUR MATE

It's time to play everyone's favorite couples game show, Match Your Mate!



TOP POP

Celebrate some of the best UK pop hits ever released. You'll Sing! You'll Dance! You'll Move! You'll Groove! You'll Have Fun!



Senses Spa & Salon has a variety of seminars and fitness classes available throughout the cruise. Pamper yourself with therapeutic spa treatments of heat, steam, rain and water in luxurious and tranquil private rooms. Deck 11, Forward.

BEVERAGE SEMINARS

Your Beverage team has a host of tastings and seminars to entertain and educate you. Stop by La Piazza, Deck 4, Aft to pre-book these experiences (nominal fee applies).

Mixology - Stem to Stern Wine Tasting - Martini Tasting - Champagne Tasting - Beer Tasting - Cognac Tasting - Whisky Tasting - Amari Tasting - Tequila & Margarita Tasting - Chocolate & Liquor Tasting - Rum Tasting

FEATURED VARIETY ACT THIS VOYAGE



THE PHYSICAL COMEDY OF MAX WINFREY

Fasten your seat belts and get ready for the outrageous Physical Comedy of Max Winfrey. His unique style of combining stunts and improvisational comedy has landed him numerous appearances on national television-- most recently as a semi-finalist on America's Got Talent. Earlier this year, Max shattered the Guinness World Record for endurance juggling with full sized axes. Young and old alike will enjoy this unpredictable show that is filled with crazy audience participation. See you there!



THE COMEDIAN AND CONTORTIONIST: JONATHAN BURNS

Born with the gifts of flexibility, curiosity, and goofiness, Jonathan Burns now uses these unique talents to astonish audiences around the globe. Over the course of his career, Jonathan has appeared on The Late Show with David Letterman, The Jay Leno Show, The Late Late Show with James Corden, been dubbed "Extremely funny" by The New York Times, and was named "Variety Artist of the Year" by Campus Activities Magazine, TWICE! When he's not performing he can usually be found in an airport terminal or spending time with his family.



THE COMEDY & RHYTHM OF BUCKETS N BOARDS

Buckets N Boards is a 2-man Comedy Percussion Show that is made up of co-creators Matthew Levingston and Gareth Sever. Their rhythm and comedy show is full of amazing percussion, ridiculous songs, inventive instrumentation, spectacular tap dancing, an incredible variety of musical talents, and good clean fun!



THE MAGIC & ILLUSION OF DAVID GATTI

An award winning magician, Gatti is an Italian by birth who has been hooked by illusion and wizardry since childhood. Over an illustrious career of 2 decades, the state-of-the-art magician has mesmerized many with his incredible and unique talents through several Euro TV shows and Satellite programs recently headlining his show in Las Vegas. He has performed in more than 50 countries across 4 continents. The theatrical storytelling style and incredible sleight of hands are his trademarks.

FUN FOR ALL AGES HIGHLIGHTS



ANYONE CAN COOK

Every Chef has a specialty, and ours is no exception. Get a taste of perfection with each day's recipe.



BUCCANEER BLAST FIREWORKS

What's a pirate party without some fireworks to remind the other ships who be ruling the oceans blue?



CASTAWAY CAY 5K (10+)

Sign up today for the Castaway Cay 5K! Please visit the Port Adventures Desk or the Guest Services Desk to register at anytime prior to our arrival at Disney Castaway Cay. Please note that runners must be 10 years of age or older to participate.



DISNEY VACATION CLUB GROUP PREVIEW

Want to learn more about taking magical vacations year after year? Please see a Disney Vacation Club Cast Member on Deck 4, Midship, or call 7-2805 from your stateroom phone for more information about our interactive group presentation.



FAMILY TALENT SHOW

Let your family take center stage and strut their stuff. Everyone has a talent, it's time to show off yours! Pre-register at Guest Services.



JACK-JACK'S INCREDIBLE DIAPER DASH

Calling all baby cruisers! It's time to take to the mat to see who's the fastest crawler of the seven seas! Register your baby 15 minutes prior to the big race.



JACKPOT BINGO

CASH prizes and raffle prizes to be won in our family friendly Bingo sessions with your Cruise Staff. Those under the age of 18 must be accompanied by an adult to play.



MICKEY'S PIRATES IN THE CARIBBEAN

It's a Pirate Celebration, me hearties! Come experience all the pirate fun alongside Captain Mickey Mouse and his famous pirate crew. Play, dance and acquire all the pirate skills needed to become an official member of Mickey's Pirate Crew! (Weather Permitting)



MIRROR MIRROR

Head to D Lounge for the fairest game show of them all, Mirror Mirror. Featuring the Magic Mirror and everyone's favorite dwarf, Dopey.

VERY MERRYTIME HOLIDAY HIGHLIGHTS



DECK THE DECK TROPICAL HOLIDAY PARTY

How do you celebrate the Holidays when you're on a tropical cruise? Your Disney pals know how to get a holiday party started with the magic of the tropics as our background! Mele Kaliki Maka everyone!



MICKEY'S TREE LIGHTING MAGIC

Come gather in the ship's atrium to experience this magical Disney Cruise Line holiday tradition. Join Mickey and the gang for a holiday sing along as a family of dreamers helps us create a little Disney magic by lighting our holiday tree.



SANTA'S WINTER WONDERLAND BALL

An evening of spectacle and holiday enchantment, join your Cruise Director and our holiday Snowbells as we celebrate the arrival of a very special holiday guest - Santa Claus! Get your cameras ready. You don't want to miss Santa and the World Famous Disney Characters as they create a Winter Wonderland....at sea!

STORYTIME WITH MRS. CLAUS

Full of fun and whimsy, Mrs. Claus makes a very special visit to the ship's atrium to read classic holiday tales to all the children - and children at heart!



SEA YA REAL SOON

A final chance to come together with your Disney friends and Merrytime cruisers. The children are all invited to the stairs to perform their own candlelight magic. Hugs, photos and joy will prevail!

YOUTH ACTIVITIES INFO & HIGHLIGHTS



Dine & Play

A convenience for families, during your dinner, our Youth Activities counselors will be available at 6:45 pm or 9:15 pm at the entrance of Royal Court and Enchanted Garden and at 7:00 pm or 9:30 pm at the Animator's Palate dining room to bring registered children to join the fun in the Youth Activities areas.

Pre-School Fun

Disney's Oceaneer Club is reserved for only those between 3-5 years of age. This is a time for them to become acclimated to Disney's Oceaneer Club, make new friends and join in on a lot of fun-filled programs and activities. Please note after Pre-School Fun has concluded, Disney's Oceaneer Club will be open for Secured Programming for ages 3-12.

Youth Activities Open House

Open House is an opportunity for all to come and participate in a variety of exciting activities and free time in the Oceaneer Club, Oceaneer Lab, Edge and Vibe throughout the cruise. During these times secured programming will still be offered in the other venue for those looking to check their children into care.



3 - 12 years old

DOCTOR STRANGE

Unravel the mysteries of the Mystic Arts from none other than Doctor Strange.

DOC MCSTUFFIN'S TOY HOSPITAL

Help Doc McStuffins diagnose and fix broken toys as you become a Jr. Toy Doctor at McStuffinsville Toy Hospital.

FORCE TRAINING

Learn the ways of the Force and take on the First Order.

JOIN THE LION GUARD

Harness your inner animal and find out if you have what it takes to join the Lion Guard!



3 - 12 years old

PLUTO'S PAJAMA PARTY

Bring the little ones in their pajamas but there will be anything but sleep when Pluto and friends host the ultimate slumber party!

GET THE HOOK

A villainous villain has stolen Captain Hook's prized golden hook. Become a member of the Top Deck Detective Agency and help solve the clues to retrieve Hook's hook.

PISTON CUP

It's Dinoco time and you're part of the pit crew! Design your own race car and see if you've got what it takes to end up in the winner's circle!

ALOHA LUAU

Come join us for a Luau experience and learn how to dance like Lilo & Stitch.



11 - 14 years old

BRAINS AND BRAWNS

You will compete against each other to solve clues, take part in physical challenges, and reach the finish first.

A PIRATE'S LIFE FOR ME

Calling all Pirates, we be! If ye have an adventurous spirit or pirate savvy, come spin the "Wheel of Destiny" for a treasure trove of fun be ripe for the takin' in this action packed pirate game show.



14 - 17 years old

THAT'S HILARIOUS

Ever wanted to show off your comedy skills? Then be a part of the cast for the crazy improv show "That's Hilarious" and put on a live show for your friends.

DIVE INTO DJ'ING

Hop on the turn tables and learn to scratch with our Cruise Staff DJ.

BUENA VISTA THEATRE

Deck 4 & 5, Midship

FEATURE MOVIES THIS VOYAGE

SATURDAY - PORT CANAVERAL

2:00 pm	G	Born in China
5:30 pm	G	Cars 3
7:45 pm	G	Cars 3
9:45 pm	PG	Moana

SUNDAY - DAY AT SEA

8:30 am	PG	Family Movie Fun Time: Moana	3D Open Captioning
12:30 pm	PG	Beauty and the Beast (2017)	
3:00 pm	G	Cars 3	3D Open Captioning
5:15 pm	PG-13	Thor: Ragnarok	
8:00 pm	PG-13	Thor: Ragnarok	3D Open Captioning
10:45 pm	PG	Beauty and the Beast (2017)	



MONDAY - COZUMEL

11:00 am	G	Coco Sneak Preview
11:45 am	PG-13	Thor: Ragnarok
2:15 pm	G	Coco Sneak Preview
2:45 pm	PG-13	Pirates of the Caribbean: Dead Men Tell No Tales
5:30 pm	PG	Moana
8:00 pm	PG	Moana
10:45 pm	PG-13	Thor: Ragnarok

TUESDAY - GRAND CAYMAN

12:15 pm	PG	Beauty and the Beast (2017)	3D Open Captioning
2:45 pm	PG-13	Thor: Ragnarok	
5:15 pm	PG-13	Guardians of the Galaxy Vol. 2	3D Open Captioning
8:00 pm	PG-13	Guardians of the Galaxy Vol. 2	
10:45 pm	G	Cars 3	

WEDNESDAY - FALMOUTH

9:30 am	G	Born in China	
11:30 am	G	Coco Sneak Preview	
12:00 pm	PG-13	Guardians of the Galaxy Vol. 2	es Open Captioning
2:45 pm	PG	Beauty and the Beast (2017)	3D 
5:15 pm	PG-13	Pirates of the Caribbean: Dead Men Tell No Tales	
8:00 pm	PG-13	Pirates of the Caribbean: Dead Men Tell No Tales	
10:45 pm	PG-13	Pirates of the Caribbean: Dead Men Tell No Tales	3D 

THURSDAY - DAY AT SEA

8:30 am	G	Family Movie Fun Time: Cars 3	Open Captioning
10:45 am	PG-13	Thor: Ragnarok	
1:15 pm	G	Born in China	
2:45 pm	G	Coco Sneak Preview	
5:15 pm	PG	Beauty and the Beast (2017)	
8:00 pm	PG	Beauty and the Beast (2017)	

FRIDAY - DISNEY CASTAWAY CAY

8:30 am	PG	Beauty and the Beast (2017)	cc Open Captioning
11:00 am	PG-13	Thor: Ragnarok	
1:45 pm	G	Coco Sneak Preview	
2:30 pm	PG	Moana	cc Open Captioning
4:45 pm	G	Coco Sneak Preview	
5:15 pm	PG-13	Thor: Ragnarok	
8:00 pm	PG-13	Thor: Ragnarok	
10:45 pm	PG-13	Thor: Ragnarok	

Subject to change.

MORE TO ENJOY ONBOARD



DISNEY VACATION CLUB® MEMBERS CELEBRATION
Members! Mix and mingle with other Members and learn how you can enhance your Membership! Please see a Disney Vacation Club representative on Deck 4, Midship, or call 7-2805 from your stateroom phone for more information.

PORT SHOPPING INFORMATION

Meet Maureen & Brandon, your Port Shopping Guides, at the Port Shopping Desk, Deck 4, Midship between 7:30 pm - 8:30 pm. Tonight, collect your FREE cruise ship charm and receive a bonus raffle ticket for tomorrow's Port Shopping Talk in the Buena Vista Theatre. Tune into channel 9 and don't miss tomorrow's event covering Cozumel, Grand Cayman and Falmouth, Buena Vista Theatre, Deck 4, Midship at 11:15 am.

RELIGIOUS SERVICES

Groups who need a location to practice their faith may contact Guest Services for availability information.



Connect@Sea

FREE INTERNET EMBARKATION DAY SPECIAL

Sign up for a free 50 MB Internet package today and enjoy it throughout the cruise! This offer is only available from noon to midnight on the day your cruise begins. On your wireless device, simply find the "DCL-Guest" Wi-Fi Network, go to www.dclguest.com to create an account, and get your free 50 MB of data to start sharing your memories even before you leave port! If you have any questions, ask our Connect@Sea Expert located at Deck 4, Midship. No purchase necessary. The free 50 MB package can only be used for the duration of the cruise. Only one free package per stateroom, but everyone can share it. Unused data from a package will not be reimbursed and it is non-transferable between voyages or ships.

FREE ON DEMAND TV

Watch Disney movies, Hollywood features, ABC shows, and even captioned content, plus much more "On Demand" for FREE in the comfort of your stateroom! Bookmark your movie and come back to watch it later. Press MENU on your stateroom television remote control and follow the prompts.

SENSES SPA & SALON



DECK 11, FORWARD
Extension 7-1465

RAINFOREST

Come enjoy our serenity lounge, with heated chairs, dry sauna, aromatherapy steam rooms and rainfall, misting showers.

\$193 for couples and \$144 for singles.

COOLSCULPTING

Fear No Mirror with CoolSculpting. The premier non-invasive fat reduction and body contouring treatment. Eliminate fat and sculpt your body with a single treatment. Complimentary Consultations available now in the Rejuvenation Spa at Senses Spa & Salon.

ONBOARD ACUPUNCTURE

Naturally effective for pain, arthritis, sea sickness, stress, digestion, weight loss, and much more.
\$150/session or \$550/5 sessions.

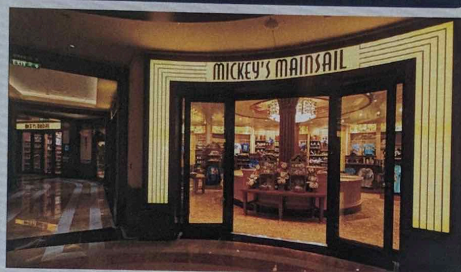
TRIPLE YOUR INDULGENCE

We recommend you enrich your day spa experience by choosing three of your favorite signature treatments and receive:

- 10% off your 1st signature treatment
- 20% off your 2nd signature treatment
- 30% off your 3rd signature treatment

AN 18% AUTO GRATUITY IS ADDED TO ALL SENSES SPA SERVICES.

MERCHANDISE SHOPPING



DECK 3, FORWARD

RED CARPET SOPHIA FIORI DIAMOND UNVEILING

Drop in at White Caps today to meet the Diamond and Jewelry Stylist from Sophia Fiori. Whether you are a full time Mom or celebrating a special occasion, every woman experiences a red carpet moment when trying on Sophia Fiori jewelry so treat yourself, you deserve it! Deck 3, Forward.

TIFFANY WONDER AWAITS

Wonder awaits inside every little Blue Box. Tiffany gifts perfectly capture the magic and incredible memories you'll make aboard the Disney Fantasy. Visit our Tiffany & Co. boutique, Deck 4, Midship.

BIBBIDI BOBBIDI BOUTIQUE

A makeover fit for a princess! Fairy Godmothers-in-Training are ready with magic and pixie dust to give your Prince and Princess the transformation of a lifetime. Make your reservations by visiting Bibbidi Bobbidi Boutique, Deck 5, Midship or dialing extension 7-9438. Limited space available.

SHUTTERS PHOTO GALLERY



DECK 4, MIDSHIP

FAMILY PORTRAITS

Photos are taken in the lobby atrium to capture all your vacation memories. Make use of these opportunities to take a beautiful family photo by our Professional photographers and remember your cruise forever.

PHOTO BOOK

Turn your magical vacation memories into an impressive keepsake, a personal one of a kind Photo Book. Fill every page with memories of your cruise vacation. Orders close at 9:00 pm on the last day of the cruise.

PRIVATE STUDIO PORTRAITURE

Book our exclusive and contemporary Private Studio experience today and capture these memories. No obligation to purchase.

PHOTOS ARE AVAILABLE FOR VIEWING ON OUR INTERACTIVE PHOTO KIOSKS APPROXIMATELY FIVE HOURS AFTER BEING TAKEN AND ARE ONLY AVAILABLE FOR PURCHASE DURING THIS CRUISE.

IMPORTANT INFORMATION

Security Notice

All Guests (including children) who wish to disembark the ship are required to present their Key to the World card at the gangway. A photo ID is also required for those Guests who are 18 years of age or older. Guests under the age of 18 are required to have a parent, guardian or other responsible adult sign an authorization form at the Guest Service Desk if they wish to go ashore unaccompanied or with any adult from another stateroom.

Inclement Weather

For the safety of all Guests, outdoor events may be changed due to unforeseen weather conditions.

Insect Repellent Advisory

The Centers for Disease Control and Prevention recommends wearing long-sleeved shirts and pants along with insect repellent to protect against mosquito bites and related illnesses when going ashore. Complimentary insect repellent is available on the pier as you exit the ship. Insect repellent is also available for purchase in White Caps. When using both sunscreen and insect repellent, use sunscreen first and apply insect repellent on top of sunscreen.

Corridor Quiet Hours

As a courtesy to all our Guests, please recognize quiet hallway hours from 10:00 pm til 8:00 am.

Environmental Message

With Disney's commitment to the Environment, please refrain from throwing anything over the Ship's side. Thank you!

No Reserved Seats Policy

As a courtesy to all our Guests, we kindly advise that the saving of seats is not permitted in the Walt Disney Theatre, and the saving of the sun loungers is not permitted on Deck 11, 12, and 13. Items left unattended will be returned to lost and found at Guest Services, Deck 3 Midship.

Cold and Flu Reminder

Please wash hands frequently and thoroughly, particularly before meals. Contact the Health Center by dialing 7-1927, should anyone in your party become ill.

Smoking

For the comfort of our Guests, the following areas are designated as smoking areas:

- *Deck 13, forward, port side by Currents
 - *Deck 12, aft, port side outdoor area that is accessible through the Meridian Lounge
 - *Deck 4, aft, port side from 6:00 pm to 6:00 am only (all of Deck 4 is non-smoking from 6:00 am to 6:00 pm)
- Smoking is prohibited inside all Guest staterooms and on stateroom verandahs. Guests found smoking in their staterooms or on their verandahs will be charged a \$250 stateroom recovery fee. Electronic cigarettes may only be used in designated smoking areas.

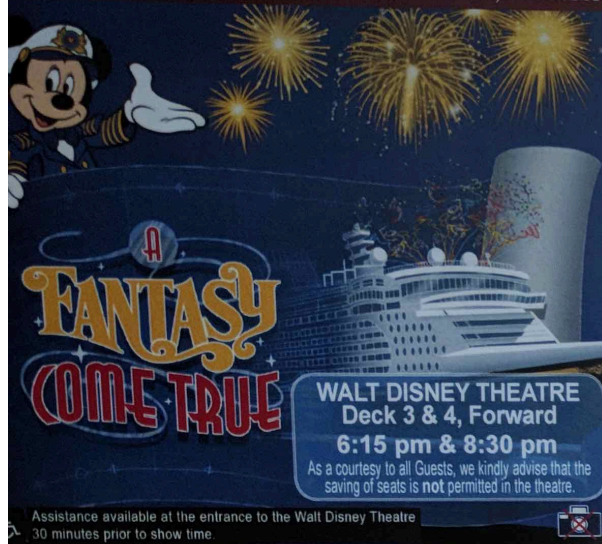
Walt Disney Theatre

Theatrical performances may use artificial fog, strobe lights, pyrotechnics and other special effects. For the safety of our performers and the comfort of those around you, the use of any photography, video recording device or any electronic equipment is prohibited.

Verandah Safety

Please do not leave any personal items on your verandah that may be blown overboard or present a fire hazard if left unattended. Guests should not sit, lean or climb on the railing or leave children unattended on the verandah. Do not open the verandah and stateroom doors simultaneously as this may create a wind effect and could cause the doors to slam unexpectedly.

THURSDAY, NOVEMBER 11, 2017 - PORT CANAVERAL, FLORIDA



FANTASY COME TRUE

WALT DISNEY THEATRE
Deck 3 & 4, Forward
6:15 pm & 8:30 pm

As a courtesy to all Guests, we kindly advise that the saving of seats is not permitted in the theatre.

Assistance available at the entrance to the Walt Disney Theatre 30 minutes prior to show time.

Character Meet & Greet Ticket Distribution

Port Adventures Desk, Deck 5, Midship 11:45 am - 2:45 pm

For Guests who did not reserve Meet and Greets online, a limited number of tickets are available today to meet some of your favorite Disney friends.

- Princess Gathering
- Disney Junior Character Breakfast
- Frozen Gathering

Tickets are required for this meet and greet. Space is limited.

Character Appearances

SAILING AWAY

Deck 11 Stage - 4:30 pm

MICKEY MOUSE

Lobby Atrium (H)
5:15 pm, 7:45 pm & 9:45 pm

DAISY DUCK

Deck 4, Balcony - 5:30 pm

MINNIE MOUSE

Lobby Atrium (H)
5:45 pm & 10:15 pm

PLUTO

Preludes - 5:45 pm
Deck 4, Balcony - 8:00 pm

CINDERELLA

Preludes - 7:30 pm

MICKEY'S TREE

LIGHTING MAGIC
Lobby Atrium - 7:30 pm

PRINCESS TIANA

Preludes - 8:00 pm

GOOFY

Deck 4, Balcony - 9:30 pm

CHIP & DALE

Preludes - 9:30 pm

DONALD DUCK

Deck 4, Balcony - 10:00 pm

(H) Hallway - (S) Starboard Side - (P) Port Side - (V) Vestibule

For details of daily Disney character appearances, refer to the character line on your Navigator Grid, or the digital character board in the Lobby Atrium. Lines close 15 minutes after given times.

SHIP DIRECTORY

YOUTH ACTIVITIES

DISNEY'S OCEANEER CLUB	DECK 5, MID	12:00 PM - 3:30 PM 4:30 PM - 12:00 AM
DISNEY'S OCEANEER LAB	DECK 5, MID	12:00 PM - 3:30 PM 4:30 PM - 12:00 AM
EDGE	DECK 13, MID	12:00 PM - 3:30 PM 4:30 PM - 12:00 AM
IT'S A SMALL WORLD NURSERY	DECK 5, MID	12:00 PM - 3:30 PM 4:30 PM - 11:00 PM
VIBE	DECK 4, FWD	12:00 PM - 3:30 PM 4:30 PM - 12:00 AM

POOLS & MORE

* Children under 12 must have adult supervision in pool areas.

AQUADUCK	DECK 12, MID	12:00 PM - 3:00 PM 4:30 PM - 10:00 PM
AQUALAB	DECK 12, AFT	12:00 PM - 3:30 PM 4:30 PM - 6:00 PM
DONALD'S POOL	DECK 11, MID	12:00 PM - 3:30 PM 5:30 PM - 10:30 PM
MICKEY'S POOL	DECK 11, MID	12:00 PM - 3:30 PM 4:30 PM - 10:30 PM
MICKEY'S SLIDE	DECK 11, MID	12:00 PM - 3:30 PM 4:30 PM - 6:00 PM
NEMO'S REEF	DECK 11, MID	12:00 PM - 3:30 PM 4:30 PM - 6:00 PM
QUIET COVE POOL (18+)	DECK 11, FWD	12:00 PM - 11:00 PM
SATELLITE FALLS (18+)	DECK 13, FWD	12:00 PM - 8:00 PM

Please note, "selfie sticks" are not permitted in any aquatic area.

Complimentary pool vests are available for children to use in the pools onboard. They are located on the pool deck.

RECREATION

GOLF/SPORTS SIMULATORS	DECK 13, AFT	12:00 PM - 3:30 PM 4:30 PM - 6:00 PM
GOOFLY GOLF	DECK 13, AFT	5:30 PM - 10:00 PM
GOOFLY'S SPORTS DECK	DECK 13, AFT	12:00 PM - 6:00 PM
MIDSHIP DETECTIVE AGENCY	DECKS 2 & 5, MID	11:30 AM - 10:00 PM
PORT ADVENTURES DESK	DECK 5, MID	12:00 PM - 3:30 PM 4:30 PM - 8:30 PM
SENSES FITNESS CENTER (18+)	DECK 11, FWD	5:00 PM - 10:00 PM

GENERAL INFORMATION

CONNECT@SEA	DECK 4, MID	1:00 PM - 3:30 PM 7:00 PM - 10:00 PM
DISNEY VACATION CLUB	DECK 4, MID	5:00 PM - 10:00 PM
DISNEY VACATION PLANNING	DECK 4, MID	7:30 PM - 8:30 PM
GUEST SERVICES	DECK 3, MID	24 HOURS
HAIR BRAIDING	DECK 11, MID	1:30 PM - 9:30 PM
MEDICAL HEALTH CENTER	DECK 1, FWD	4:30 PM - 7:00 PM
PORT SHOPPING DESK	DECK 4, MID	7:30 PM - 8:30 PM
PRELUDES	DECK 3, FWD	SHOWTIMES
SENSES SPA AND SALON	DECK 11, FWD	11:30 AM - 10:00 PM
SHUTTERS PHOTO GALLERY	DECK 4, MID	7:00 PM - 10:30 PM

SHOPPING

BIBBIDI BOBBIDI BOUTIQUE	DECK 5, MID	12:00 PM - 3:00 PM 5:00 PM - 9:00 PM
MICKEY'S MAINSAIL	DECK 3, FWD	5:45 PM - 11:00 PM
SEA TREASURES	DECK 3, FWD	5:45 PM - 11:00 PM
TIFFANY & CO.	DECK 4, MID	5:45 PM - 11:00 PM
VISTA GALLERY	DECK 2, MID	24 HOURS
WHITE CAPS	DECK 3, FWD	5:45 PM - 11:00 PM
WHOZITS & WHATZITS	DECK 11, MID	12:00 PM - 3:15 PM 4:45 PM - 6:00 PM

DUE TO PORT REGULATIONS, WHEN THE SHIP IS DOCKED, THE STORES MUST REMAIN CLOSED.

Evening Attire Cruise Casual

DRINK OF THE DAY
Paradise Punch (Alcoholic)
Espresso Chiller (Non-Alcoholic)

WEATHER FORECAST
Today: Partly Cloudy
High: 74°F/23°C

Veteran's Day

DINING & LOUNGES

LUNCH

CABANAS	DECK 11, AFT	12:00 PM - 3:00 PM
ENCHANTED GARDEN	DECK 2, MID	11:45 AM - 2:00 PM
FILLMORE'S FAVORITES	DECK 11, MID	12:00 PM - 3:30 PM 4:15 PM - 6:30 PM
LUIGI'S PIZZA	DECK 11, MID	12:00 PM - 3:30 PM 4:15 PM - 6:30 PM
TOW MATER'S GRILL	DECK 11, MID	12:00 PM - 3:30 PM 4:15 PM - 10:00 PM

DINNER

ANIMATOR'S PALATE	DECK 3, AFT	5:45 PM & 8:15 PM
ENCHANTED GARDEN	DECK 2, MID	5:45 PM & 8:15 PM
ROYAL COURT	DECK 3, MID	5:45 PM & 8:15 PM
PALO (18+) (RESERVATIONS REQ. & NON-FEE APPLIES)	DECK 12, AFT	6:00 PM - 8:30 PM
REMY (18+) (RESERVATIONS REQ. & NON-FEE APPLIES)	DECK 12, AFT	6:00 PM - 8:30 PM

LATE NIGHT SNACKS

LA PIAZZA (18+)	DECK 4, AFT	10:45 PM - 11:45 PM
LUIGI'S PIZZA	DECK 11, MID	9:30 PM - 12:00 AM

ADDED FEATURES

BEVERAGE STATION	DECK 11, MID	24 HOURS
EYE SCREAM	DECK 11, MID	12:00 PM - 11:00 PM
ROOM SERVICE	DIAL 0	24 HOURS
SWEET ON YOU	DECK 11, AFT	11:30 AM - 10:30 PM

ENTERTAINMENT - LOUNGES - BARS

Adults must be 21 and older to consume alcoholic beverages.

BON VOYAGE	DECK 3, MID	11:45 AM - 10:30 PM
COVE BAR (18+)	DECK 11, FWD	11:45 AM - 11:00 PM
COVE CAFE (18+)	DECK 11, FWD	11:45 AM - 12:00 AM
CURRENTS (18+)	DECK 13, FWD	11:45 AM - 11:00 PM
D LOUNGE	DECK 4, MID	SHOWTIMES
LA PIAZZA (18+ AFTER 9:00 PM)	DECK 4, AFT	11:45 AM - 12:00 AM
THE TUBE	DECK 4, AFT	9:30 PM - 2:00 AM
FROZONE TREATS	DECK 11, MID	11:45 AM - 6:00 PM
MERIDIAN (18+)	DECK 12, AFT	5:00 PM - 12:00 AM
OUTLOOK (18+)	DECK 14, MID	
OOH LA LA (18+)	DECK 4, AFT	5:30 PM - 12:00 AM
O'GILLS PUB (18+ AFTER 9:00 PM)	DECK 4, AFT	11:45 AM - 12:00 AM
SENSES JUICE BAR	DECK 11, FWD	11:45 AM - 8:00 PM
SKYLINE (18+)	DECK 4, AFT	5:00 PM - 12:00 AM
VISTA CAFE	DECK 4, MID	11:45 AM - 10:30 PM
WAVES	DECK 12, AFT	11:45 AM - 6:00 PM

Public Health Advisory: Consuming raw or under-cooked meats, poultry, seafood, shellfish, or eggs may increase your risk for food borne illness, especially if you have certain medical condition.



MIDSHIP DETECTIVE AGENCY

Use your detective know-how and our special detective "badge" to search the ship and catch your criminal! Deck 2 & 5, Midship Kiosks.

Disney Cruise Line
PORT ADVENTURES

Visit the Port Adventures Desk, Deck 5, Midship, for bookings & questions.

IMPORTANT NUMBERS

Fire/Security: 7-3001
Medical Emergency: 7-3000
Health Center: 7-1927