

# VOYAGE NAVIGATOR

WEDNESDAY  
SEPTEMBER 27, 2017

TO

MONDAY  
OCTOBER 2, 2017



## CRUISE HIGHLIGHTS

### WEDNESDAY

NEW YORK

Port Departure: 5:00 pm  
All Aboard: 4:00 pm  
Attire: Cruise Casual

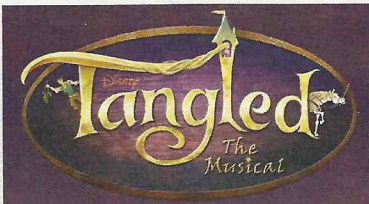


**BE OUR GUEST - WELCOME ABOARD SHOW**  
Walt Disney Theatre  
6:15 pm & 8:30 pm

### THURSDAY

DAY AT SEA

Attire: Halloween/ Cruise Casual



**TANGLED: THE MUSICAL**  
Walt Disney Theatre  
6:15 pm & 8:30 pm

### FRIDAY

BAR HARBOR

All Ashore: 8:00 am  
All Aboard: 6:00 pm  
Attire: Pirate or Cruise Casual

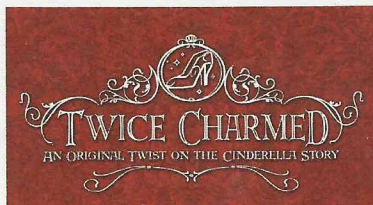


**SHOWTIME: MARCUS MONROE**  
Walt Disney Theatre  
6:15 pm & 8:30 pm

### SATURDAY

SAINT JOHN

All Ashore: 8:00 am  
All Aboard: 4:45 pm  
Attire: Cruise Casual

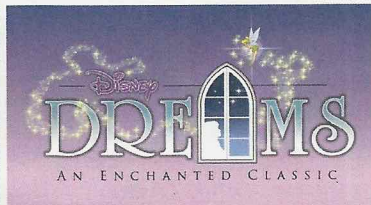


**TWICE CHARMED**  
Walt Disney Theatre  
6:15 pm & 8:30 pm

### SUNDAY

DAY AT SEA

Attire: Cruise Casual



**DISNEY DREAMS: AN ENCHANTED CLASSIC**  
Walt Disney Theatre  
6:15 pm & 8:30 pm

Subject to change.

## WELCOME ABOARD!

### YOUR STATEROOM & LUGGAGE

Staterooms will be ready at 1:30 pm. To allow your Stateroom Host/ess time to prepare your room, please do not remove the blue stanchion straps. Stateroom hosts will deliver luggage throughout the day until 5:30 pm.

### STATEROOMS WITH BUNK BEDS

Bunk beds are recessed into the ceiling and will be prepared during evening turndown service by your Stateroom Host/ess.

### STATEROOM SAFE

Each stateroom is equipped with a secured storage safe. Instructions for use are located on the safe.

### TO CHANGE DINING ASSIGNMENT

Requests for different seating times will be taken today:

- 12:30 pm - 3:00 pm; Book in Lumière's, Deck 3, Midship or please dial 7-1831 and leave a voicemail.

### PALO DINING RESERVATIONS

Reservations are required and will be taken on a first come basis today:

- 12:30 pm - 3:00 pm Lumière's, Deck 3, Midship, or please dial 7-6843 and leave a voicemail.

**Adult Exclusive Dining Opportunity!** Guests are invited to make 2 dinner reservations at our adult-exclusive restaurant, Palo. This includes one reservation on embarkation evening and one more on another night of the cruise.

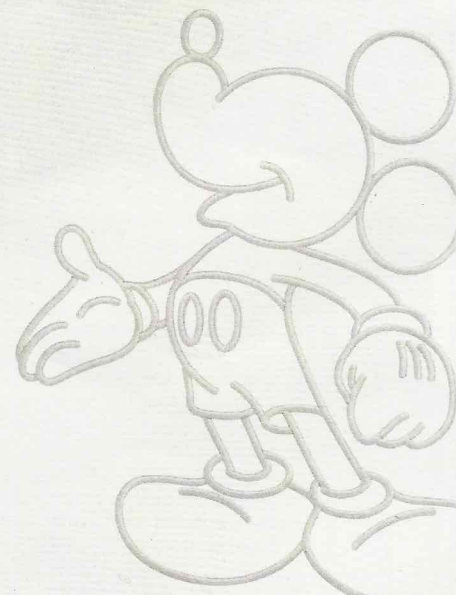
Reservations are subject to availability and a specialty dining charge will apply.

### DINNER

5:45 pm - First seating      8:15 pm - Second seating

Please check your Key To The World Card for details of your dining rotation, and bring it to your specific dining location. There is no need to wait in line prior to dinner. Dining Rooms open at designated seating times and your table is reserved each night of your cruise.

A = Animator's Palate, Deck 4, Aft      L = Lumière's, Deck 3, Midship      C = Cariocas, Deck 3, Aft



Create the most memorable experiences during your Disney Cruise Line vacation with Port Adventures! Our Port Adventures are designed for you to see the best our ports have to offer. Stop by the Port Adventures Desk, Deck 3, Midship where our friendly team will be happy to assist you plan your adventure!  
There is an adventure for everyone on your Disney Magic® vacation.

### IMPORTANT NUMBERS

Fire/Security: 7-3001

Medical Emergency: 7-3000

Health Center: 7-1927

# ADULT ACTIVITY HIGHLIGHTS



**1820 SOCIETY (GUESTS 18-20 YEARS ONLY)**  
1820 Society is an exclusive option for young adult Guests. Come meet fellow passengers and learn about the excellent activities that the Disney Magic offers to create the perfect cruise experience.



**80'S FLASHBACK**  
The 80's are back! Join your Cruise Staff team, in testing your 80's knowledge in this high energy 80's revival.



**ANYONE CAN COOK**  
Every Chef has a specialty, and ours is no exception. Get a taste of perfection with each day's recipe.



**KRAZY KARAOKE**  
Take to the stage, grab a microphone and sing your favorite tunes with your Club Host and DJ.



**MATCH YOUR MATE**  
It's time to play everyone's favorite couples game show, Match Your Mate!



**POP!**  
Have you been told you are full of useless information about pop culture? If the answer is "Yes", then you have what it takes to play the high energy game show all about the world of Pop!



**CANVAS AND COCKTAILS - BEAUTY AND THE BEAST**  
Create your own Beauty and the Beast inspired painting during this adult-only event. You'll learn to paint Disney style while enjoying 3 of Disney Cruise Line's most popular cocktails. **NOTE** - There is a nominal fee for this event. Pre-booking required.



*Senses Spa & Salon has a variety of seminars and fitness classes available throughout the cruise. Pamper yourself with therapeutic spa treatments of heat, steam, rain and water in luxurious and tranquil private rooms. Deck 9, Forward.*

## BEVERAGE SEMINARS

Your Beverage team has a host of tastings and seminars to entertain and educate you. Stop by Lumière's, Deck 3, Midship, 12:00 - 3:00 pm or Guest Services, Deck 3, Midship after today to pre-book these experiences (nominal fee applies).

- Mixology - Stem to Stern Wine Tasting - Martini Tasting - Champagne Tasting - Cognac Tasting - Whisky Tasting - Amari Tasting - Tequila & Margarita Tasting - Chocolate & Liquor Tasting - Rum Tasting

## FEATURED VARIETY ACTS THIS VOYAGE



**THE PHYSICAL COMEDY OF MARCUS MONROE**  
Marcus Monroe is a New York City based award winning comedian and juggler. His show is a high-energy blend of innovative juggling with in your face comedic banter riddled with awkwardness. He is the recipient of the prestigious Andy Kaufman Award and has recently appeared on The Late Show, HBO, MTV, Netflix and Comedy Central. The New York Times calls Marcus "one of the most entertaining performers to watch in New York City."



**THE MAGIC, BALLOONS & COMEDY OF JOHN CASSIDY**  
John Cassidy's bizarre antics have earned him widespread acclaim as one of the most original comedians performing today. Starting his career as a magician and balloon sculptor for children's birthday parties, John began noticing that the parents were also finding his act to be especially hilarious and ingenious. Convention work and club and college dates soon followed for this neurotically charming performer. The world of magic has taken a special shine to John and he is now among the most requested acts at various conventions and seminars throughout the world, and has been named one of the funniest comedy magicians working today by MAGIC Magazine.

# FUN FOR ALL AGES HIGHLIGHTS



**A PIRATES LIFE FOR ME**  
Calling all Pirates, we be! If ye have an adventurous spirit or pirate savvy, come spin the "Wheel of Destiny" for a treasure trove of fun be ripe for the takin' in this action packed pirate game show.



**DISNEY VACATION CLUB GROUP PREVIEW**  
Want to learn more about taking magical vacations year after year? Please see a Disney Vacation Club representative on Deck 4, Midship, or call 7-2805 from your stateroom phone for more information about our interactive group presentation.



**JACK-JACK'S INCREDIBLE DIAPER DASH**  
Calling all baby cruisers! It's time to take to the mat to see who's the fastest crawler of the seven seas! Register your baby 15 minutes prior to the big race.



**JACKPOT BINGO**  
CASH prizes and raffle prizes to be won in our family friendly Bingo sessions with your Cruise Staff. Those under the age of 18 must be accompanied by an adult to play.



**PIRATES IN THE CARIBBEAN DECK PARTY**  
Yer Disney Friends are all set for a swashbucklin' good time! It's a Pirate Celebration, me hearties! Hoist yourself to Deck 9 to enjoy a rowdy buccaneer bash we call Pirates IN the Caribbean Deck Party. (Weather Permitting)



**SALUDOS AMIGOS FIESTA**  
Come see what Donald and his friends are up to this time. Bring the family out to this interactive dance party featuring fun Latin music! Your family will learn to salsa, merengue and just have a Latin good time!



**SO YOU THINK YOU KNOW YOUR FAMILY?**  
This fun-filled family game show is always full of surprises. Find out how well you know, or don't know your family!



**WHO WANTS TO BE A MOUSEKETEER?**  
Your chance to get into the "hot seat" and win limited edition prizes. Or, play along as part of our live studio audience.

## HALLOWEEN ON THE HIGH SEAS HOLIDAY HIGHLIGHTS



**HAUNTED STORIES OF THE SEA**  
Join our Sea Captain for the Halloween tradition of telling ghostly tales of the strange, bizarre and just plain scary that will leave even the bravest of souls with a chill.



**HALLOWEEN ISN'T JUST FOR KIDS (18+)**  
The trendy dance club for adults becomes the hangout for the dark side of Disney. Flaunt your wild side and compete in our adults only costume contest. We hope to see you scaring up some fun on the dance floor. Trick or Treat isn't just for Kids... anymore.



**MICKEY'S MOUSE-QUERADE PARTY**  
Enjoy a fun trick or treat "Mouse-Querade" featuring music, games, a visit from some of your favorite Disney Pals in their Halloween costumes and of course treats. Please remember, masks that completely cover a person's face may only be worn when standing still at character photo locations and must be carried when moving around the ship. We also ask that you choose costumes that are not obstructive or offensive.



**THE PUMPKIN TREE**  
Do you know why we celebrate Halloween or carve jack-o-lanterns? Join the Caretaker at the Pumpkin Tree, and hear some fun stories and customs of Halloween. Don't forget your pumpkin seed, we promise a ghostly good time.



**TIM BURTON'S THE NIGHTMARE BEFORE CHRISTMAS SING AND SCREAM**  
You're invited to a special presentation of Tim Burton' popular classic, presented in 3-D. Featuring state-of-the-art projection, sound and in-theatre effects, you become part of the experience, as you sing and scream along. You never know who may show up.

Please check your daily Personal Navigator for all times and locations.

# YOUTH ACTIVITIES INFO & HIGHLIGHTS



## Dine & Play

As a convenience for families dining at 8:15 pm, our Youth Activities Counselors will be available at 9:15 pm at the entrance of Lumiere's and Carioca's and at 9:30 pm at the entrance of Animator's Palate to bring registered children to join the fun in Disney's Oceaneer Club and Disney's Oceaneer Lab.

## Pre-School Fun

Disney's Oceaneer Club is reserved for only those between 3-5 years of age. This is a time for them to become acclimated to Disney's Oceaneer Club, make new friends and join in on a lot of fun-filled programs and activities. Please note after Pre-School Fun has concluded, Disney's Oceaneer Club will be open for Secured Programming for ages 3-12.

## Youth Activities Open House

Open House is an opportunity for all to come and participate in a variety of exciting activities and free time in the Oceaneer Club, Oceaneer Lab, Edge and Vibe throughout the cruise. During these times secured programming will still be offered in the other venue for those looking to check their children into care.

## Youth Activities Venue Tour

Come and take a tour of Disney's Oceaneer Club and Disney's Oceaneer Lab. This informative tour will give you the information you need to know about our exciting spaces and activities offered for children ages 3-12. Please see your Personal Navigator or the Navigator App for times.



3 - 12 years old

## BECOME IRON MAN!

Do you want to be Iron Man? Marvel's Avengers Academy invites you to virtually suit up in Iron Man's armor for an exciting interactive training gauntlet.

## MICKEY'S PUZZLE PLAYTIME

Come and play with Mickey & friends as they share their favorite games, puzzles and dances!

## TOY STORY BOOT CAMP

Join Corporal Green in our own version of boot camp as we learn how to have fun - The Toy Story way!



3 - 12 years old

## SUPER SLOPPY SCIENCE

Join Professor Make-O-Mess in some of the most extreme experiments you will ever see in the world of Super Sloppy Science!

## PLUTO'S PAJAMA PARTY

Bring the little ones in their pajamas but there will be anything but sleep when Pluto and friends host the ultimate slumber party!

## PISTON CUP

It's Dinoco time and you're part of the pit crew! Design your own race car and see if you've got what it takes to end up in the winner's circle!



11 - 14 years old

## HEROES VS. VILLAINS

Join your favorite hero or villain team on a series of activities that will take place throughout the cruise.

## THAT'S HILARIOUS

Ever wanted to show off your comedy skills? Then be a part of the cast for the crazy improv show "That's Hilarious" and put on a live show for your friends.



14 - 17 years old

## A PIRATE'S LIFE FOR ME

Yo ho, yo ho, a Pirate's Life for Me! Aarrgh me mateys! Put your knowledge to the test!

## HOMECOMING

Come and join your fellow teens in our very own version of "Homecoming" and dance the night away.

# BUENA VISTA THEATRE

Deck 5, Midship

## FEATURE MOVIES THIS VOYAGE

### WEDNESDAY - NEW YORK

5:30 pm G Cars 3  
8:00 pm G Cars 3  
10:00 pm PG Moana



### THURSDAY - DAY AT SEA

8:30 am PG Family Movie Fun Time: Moana  
12:15 pm PG-13 Guardians of the Galaxy Vol. 2  
3:00 pm G Cars 3  
5:15 pm PG-13 Spider-Man: Homecoming  
8:00 pm PG-13 Spider-Man: Homecoming  
10:45 pm PG Beauty and the Beast (2017)



### FRIDAY - BAR HARBOR

11:15 am PG Beauty and the Beast (2017)  
2:00 pm PG-13 Spider-Man: Homecoming  
5:00 pm PG-13 Pirates of the Caribbean: Dead Men Tell No Tales  
8:00 pm PG-13 Pirates of the Caribbean: Dead Men Tell No Tales  
10:30 pm G Cars 3



### SATURDAY - SAINT JOHN

10:45 am PG-13 Spider-Man: Homecoming  
1:15 pm G Born in China  
2:45 pm PG-13 Pirates of the Caribbean: Dead Men Tell No Tales  
5:15 pm PG Beauty and the Beast (2017)  
8:00 pm PG Beauty and the Beast (2017)  
10:30 pm PG-13 Guardians of the Galaxy Vol. 2



### SUNDAY - DAY AT SEA

8:30 am G Born in China  
10:15 am PG Beauty and the Beast (2017)  
12:45 pm G Cars 3  
3:00 pm PG Moana  
5:15 pm PG-13 Guardians of the Galaxy Vol. 2  
8:00 pm PG-13 Guardians of the Galaxy Vol. 2  
10:45 pm PG-13 Pirates of the Caribbean: Dead Men Tell No Tales



Subject to change.



# MORE TO ENJOY ONBOARD

## BOOK ONBOARD AND SAVE!

Explore all the itineraries Disney Cruise Line offers - from the Caribbean and Bahamas to Alaska or Europe. Save when you book your next family adventure onboard! Visit the Disney Vacation Planning desk, Deck 4, Midship, for more information. Disney Vacation Planning tends to get busy on the last day of sailing. Don't miss the opportunity to plan your next Disney vacation.



## DISNEY VACATION CLUB® GROUP PREVIEW

Want to learn more about taking magical vacations year after year? Please see a Disney Vacation Club Cast Member on Deck 4, Midship, or call 7-2805 from your stateroom phone for more information about our interactive group presentation.



## PORT SHOPPING INFORMATION

Meet Gemma, your Port Shopping Guide, for hints, tips and know how when it comes to shopping ashore this cruise! Gemma has great recommendations for the whole family and will show you how to maximize your time in our ports of call with money saving tips! Visit Gemma at the Port Shopping Desk, Deck 3, Midship between 7:30 pm & 8:30 pm tonight for a free gift.



## Connect@Sea

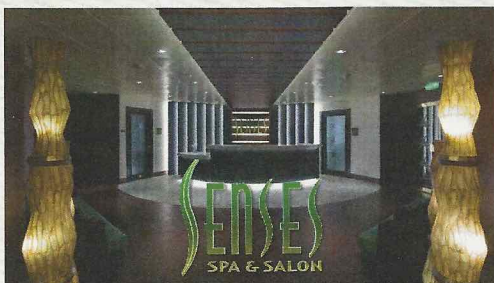
### FREE INTERNET EMBARKATION DAY SPECIAL

Sign up for a free 50 MB Internet package today and enjoy it throughout the cruise! This offer is only available from noon to midnight on the day your cruise begins. On your wireless device, simply find the "DCL-Guest" Wi-Fi Network, go to [www.dclguest.com](http://www.dclguest.com) to create an account, and get your free 50 MB of data to start sharing your memories even before you leave port! If you have any questions, ask our Connect@Sea Expert located at Deck 3, Midship. No purchase necessary. The free 50 MB package can only be used for the duration of the cruise. Only one free package per stateroom, but everyone can share it. Unused data from a package will not be reimbursed and it is non-transferable between voyages or ships.

### RELIGIOUS SERVICES

Groups who need a location to practice their faith may contact Guest Services for availability information.

## SENSES SPA & SALON



### DECK 9, FORWARD Extension 7-1465

#### RAINFOREST

Come enjoy our serenity lounge, with heated chairs, dry sauna, aromatherapy steam rooms and rainfall, misting showers.  
Couples Cruise Pass - \$169 ~ Single Cruise Pass - \$114

#### IONITHERMIE

Lose between 1 - 8 inches? Speed up your metabolism. Firm muscle tone. Improve appearance of cellulite. \$155/1 session or \$497/5 sessions.

#### ONBOARD ACUPUNCTURE

Naturally effective for pain, arthritis, sea sickness, stress, digestion, weight loss, and much more.  
\$150/session or \$550/5 sessions.

#### ELEMIS BIOTEC

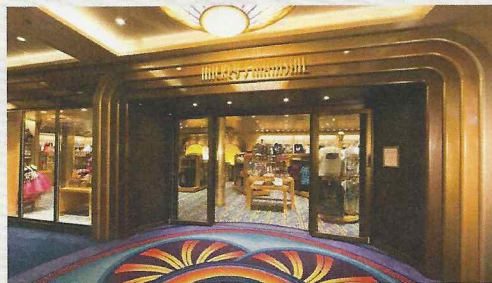
8 different Facial treatments available based on your specific concerns or needs. Technology turbo charges the concept of touch. The clinically proven result is visibly healthy, nourished and energized skin.

#### REJUVENATION SPA CONSULTATIONS

Ready to enhance your natural beauty? Book your free Facial Rejuvenation consultation with our Rejuvenation Doctor at the Senses Spa.

**AN 18% AUTO GRATUITY IS ADDED TO ALL SENSES SPA SERVICES.**

## MERCHANDISE SHOPPING



### DECK 4, FORWARD

#### CANADIAN COAST SPECIAL MERCHANDISE

Stop by White Caps to commemorate your New York to Canada sailing on board the Disney Magic with special new merchandise inspired just for this unique voyage. Deck 4, Forward.

#### HELPFUL SHOPPING TIP

While shopping onboard, you may collect your items from both stores before proceeding to checkout at any register. No need to have to wait in line in each store to pay for your items separately! Mickey's Mainsail and White Caps, Deck 4, Forward.

#### VISTA GALLERY - MORE TO ENJOY WHILE ONBOARD

Welcome onboard, take a minute to stroll through the Vista Gallery on Deck 4, Midship and discover special themed Disney artwork. Find a selection of fine art, giclees, lithographs, and original Disney art.

#### MARVEL SUPERHERO MERCHANDISE

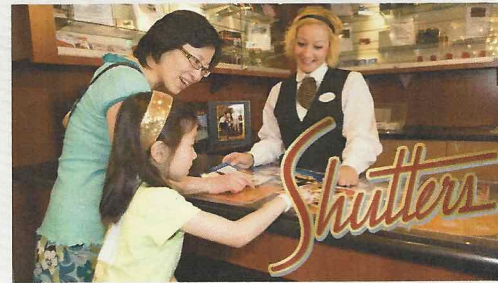
Stop by Sea Treasures, Deck 3, Forward and discover exciting merchandise of some of your favorite Marvel Superheroes!

#### BIBBIDI BOBBIDI BOUTIQUE

A makeover fit for a princess! Fairy Godmothers-in-Training are ready with magic and pixie dust to give your Prince and Princess the transformation of a lifetime. Make your reservations by visiting Bibbidi Bobbidi Boutique, Deck 10, Forward, Port Side, or dialing extension 7-1492. Limited space available.

**DUE TO PORT REGULATIONS, WHEN THE SHIP IS DOCKED, THE STORES WILL REMAIN CLOSED.**

## SHUTTERS PHOTO GALLERY



### DECK 4, AFT

#### WELCOME ABOARD RAFFLE

Your embarkation photos will be available for viewing at 6:30pm. Visit Shutters on Deck 4 AFT and drop your raffle coupon for a chance to win a 10 Digital Photo package with a \$149.95 value.

#### OUR CRUISE PHOTOS DIGITAL!

Your embarkation photos will be available for viewing at 6:30 pm. Visit Shutters, Deck 4, Aft, and drop your raffle coupon for a chance to win a 10 Digital Photo Package, with a \$149.95 value.

\*Terms and conditions apply.

Visit Shutters on Deck 4, Aft for more information.

#### FORMAL PORTRAITS

Formal portraits will be available on Day 4 in the Lobby Atrium, Deck 3, Midship from 5:15pm - 6:15pm, 7:30pm - 8:45pm & 9:45pm - 10:30pm

#### PHOTO BOOK

Turn your magical vacation memories into an impressive keepsake, a personal one of a kind Photo Book. Fill every page with memories of your cruise vacation. Orders close at 9:00 pm on the last day of the cruise.

**PHOTOS ARE AVAILABLE FOR VIEWING ON OUR INTERACTIVE PHOTO KIOSKS APPROXIMATELY FIVE HOURS AFTER BEING TAKEN AND ARE ONLY AVAILABLE FOR PURCHASE DURING THIS CRUISE.**

## IMPORTANT INFORMATION

### Security Notice

All Guests (including children) who wish to disembark the ship are required to present their Key to the World card at the gangway. A photo ID is also required for those Guests who are 18 years of age or older. Guests under the age of 18 are required to have a parent, guardian or other responsible adult sign an authorization form at the Guest Service Desk if they wish to go ashore unaccompanied or with any adult from another stateroom.

### Inclement Weather

For the safety of all Guests, outdoor events may be changed due to unforeseen weather conditions.

### Insect Repellent Advisory

The Centers for Disease Control and Prevention recommends wearing long-sleeved shirts and pants along with insect repellent to protect against mosquito bites and related illnesses when going ashore. Complimentary insect repellent is available on the pier as you exit the ship. Insect repellent is also available for purchase in White Caps. When using both sunscreen and insect repellent, use sunscreen first and apply insect repellent on top of sunscreen.

### Corridor Quiet Hours

As a courtesy to all our Guests, please recognize quiet hallway hours from 10:00 pm til 8:00 am.

### Environmental Message

With Disney's commitment to the Environment, please refrain from throwing anything over the Ship's side. Thank you!

### No Reserved Seats Policy

As a courtesy to all our Guests, we kindly advise that the saving of seats is not permitted in the Walt Disney Theatre, and the saving of the sun loungers is not permitted on Deck 9 and 10. Items left unattended will be returned to lost and found at Guest Services, Deck 3 Midship.

### Cold and Flu Reminder

Please wash hands frequently and thoroughly, particularly before meals. Contact the Health Center by dialing 7-1927, should anyone in your party become ill.

### Smoking

For the comfort of our Guests, the following areas are designated as smoking areas:

\*Deck 9, Forward, Port Side by 6:00 am only (all of Deck 4 is non-smoking from 6:00 am to 6:00 pm)  
Smoking is prohibited inside all Guest staterooms and on stateroom verandahs. Guests found smoking in their staterooms or on their verandahs will be charged a \$250 stateroom recovery fee. Electronic cigarettes may only be used in designated smoking areas.

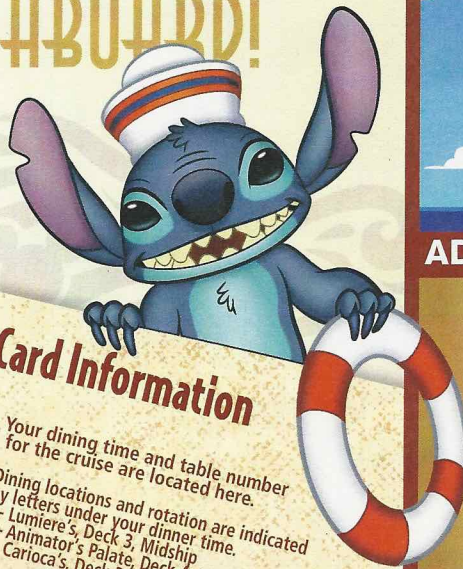
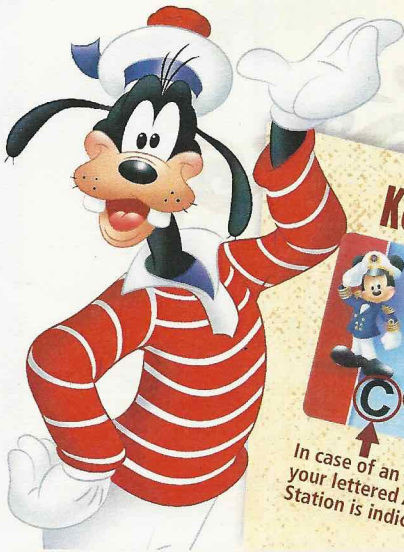
### Walt Disney Theatre

Theatrical performances may use artificial fog, strobe lights, pyrotechnics and other special effects. For the safety of our performers and the comfort of those around you, the use of any photography, video recording device or any electronic equipment is prohibited.

### Verandah Safety

Please do not leave any personal items on your verandah that may be blown overboard or present a fire hazard if left unattended. Guests should not sit, lean or climb on the railing or leave children unattended on the verandah. Do not open the verandah and stateroom doors simultaneously as this may create a wind effect and could cause the doors to slam unexpectedly.

# WELCOME ABOARD!



## Key to the World Card Information



- Your dining time and table number for the cruise are located here.
- Dining locations and rotation are indicated by letters under your dinner time.
  - L - Lumiere's, Deck 3, Midship
  - A - Animator's Palate, Deck 4, Aft
  - C - Carlotta's, Deck 3, Aft

In case of an emergency, your lettered Assembly Station is indicated here.




## ADVENTURES AWAY

Earn your status as V.I.P. sailors! Join your Cruise Director, Lesley, your Disney pals and your Cruise Staff as we officially begin your "Adventures Away."

**Deck Stage,  
Deck 9, Midship,  
4:45 pm**

**DRINK OF THE DAY**  
Cool Breeze (Alcoholic)  
Lava Smoothie (Non-Alcoholic)

Afternoon	1:45	2:00	2:15	2:30	2:45	3:00	3:15	3:30	3:45	4:00	4:15	4:30	4:45	5:00	5:15	5:30	5:45	6:00	6:15	6:30	6:45		
FUNNEL VISION				Poolside Jams with Cruise Staff DJ Deck 9 Stage					<b>Mandatory Guest Assembly Drill 4:15 pm</b> (All Guests must attend)  All ship services will be suspended during this time.  Refer to the posted drill instructions on the back of your stateroom door prior to heading to Deck 4. Please bring your Key to the World Card.  You will not need your life jacket for the Guest Assembly Drill.    Your Assembly Station is indicated on your Key To The World card.				Adventures Away Deck 9 Stage			Monsters, Inc. (G)  Open Captioning Funnel Vision							
BUENA VISTA THEATRE																		Cars 3 (G) Duration: 1 Hour 49 Minutes					
CHARACTERS																			Mickey Lobby Atrium (P)				
																				Goofy DK4 Mid (S)			
FUN FOR ALL AGES	Walking Ship Tour Preludes			Walking Ship Tour Preludes																Top Tunes with Samson & Kiley Promenade Lounge			
				Poolside Jams with Cruise Staff DJ Deck 9 Stage																Chart Toppers with FireLites Lobby Atrium			
ADULTS	Spa Open House Senses Spa & Salon				Spa Raffle Senses Spa & Salon										Footprint Analysis Senses Spa & Salon					Live Irish Music with Ciaran & Conall O'Gills Pub			
VIBE 14-17 YEARS OLD	Youth Activities Open House & Registration													Youth Activities Open House					Open for Teens				
EDGE 11-14 YEARS OLD	Youth Activities Open House & Registration													Open House   Tween You and I Super Spin					Open for Tweens				
OCEANEER LAB 3-12 YEARS OLD	Youth Activities Open House & Registration				Youth Activities Tour			Open House						Youth Activities Open House		Game Challenge			Meet Your Counselors				
OCEANEER CLUB 3-12 YEARS OLD	Youth Activities Open House & Registration			Picture This		Youth Activities Tour		Open House					Open House		Aloha Luau			Open House					

Fold along the dotted lines and take me with you so you don't miss any of the fun!



Evening	7:00	7:15	7:30	7:45	8:00	8:15	8:30	8:45	9:00	9:15	9:30	9:45	10:00	10:15	10:30	10:45	11:00	11:15	11:30	11:45	12:00
FUNNEL VISION			WALL-E (G)  Open Captioning Funnel Vision																		
BUENA VISTA THEATRE					Cars 3 (G) Duration: 1 Hour 49 Minutes								Moana (PG) Duration: 1 Hour 53 Minutes								
CHARACTERS		Minnie Preludes		Mickey Preludes	Goofy DK4 Mid (S)				Goofy DK4 Mid (S)	Minnie Lobby Atrium (P)	Donald Preludes	Mickey Lobby Atrium (P)									
				Daisy DK5 Mid (S)							Pluto DK4 Mid (S)										
FUN FOR ALL AGES							Family Dance Party D Lounge														
			Family Dance Party Fathoms						Evening Melodies with Samson & Kiley Promenade Lounge												
ADULTS		Ciaran & Conall LIVE O'Gills Pub		Team Trivia O'Gills Pub		Live Piano with Tom Scott Keys			Cruise Staff DJ Fathoms							Cruise Staff DJ Fathoms					
			Music & Martinis with Tim Moss Keys							1820 Society. Stir it. Blend it. Taste it. Cove Cafe								Late Night Piano Keys			
VIBE 14-17 YEARS OLD	Open for Teens		Cards Tournament		Wii Challenge		Profiles		Ice Breakers		The Download		Heroes and Villains								
EDGE 11-14 YEARS OLD	Open for Tweens		Wii Challenge		GAGA Ball		Profiles		Meet Your Counselors		Ice Breakers		Heroes and Villains								
OCEANEER LAB 3-12 YEARS OLD	Capture the Flag		Super Sloppy Science		GAGA Ball		Ice Breakers		Chill		Wii Challenge										
OCEANEER CLUB 3-12 YEARS OLD	Explore the Club		Toy Story Boot Camp		Memory Wall		Magic Show		Four Square		Glow Jam										

FOLD

**YOUTH ACTIVITIES OPEN HOUSE**  
A non-secured program with activities for families, adults and children to enjoy together.



Be our Guest!

WELCOME ABOARD SHOW

WALT DISNEY THEATRE

Deck 4, Forward  
6:15 pm & 8:30 pm

As a courtesy to all Guests, we kindly advise that the saving of seats is not permitted in the Walt Disney Theatre.

Assistance is available at the entrance to the Walt Disney Theatre 30 minutes prior to show time.

### Character Meet & Greet Ticket Distribution

Port Adventures Desk, Deck 3, Midship - 12:00 pm - 2:00 pm  
For Guests who did not reserve meet and greets online, a limited number of tickets are available today to meet some of your favorite Disney friends.

Princess Gathering ~ Frozen Gathering

VIP Character Breakfast

Tickets are required for each of these meet and greets.  
Space is limited.

### Character Appearances

**PRINCESS TIANA**  
DK4 Mid (S) - 12:30 pm

**RAPUNZEL**  
DK4 Mid (S) - 1:15 pm

**ADVENTURES AWAY**  
Deck 9 Stage - 4:45 pm

**MINNIE MOUSE**  
Lobby Atrium (P)  
5:15 pm & 9:30 pm  
Preludes - 7:15 pm

**PLUTO**  
DK4 Mid (S)  
5:15 pm & 9:45 pm

**MICKEY MOUSE**  
Lobby Atrium (P)  
5:45 pm & 10:00 pm  
Preludes - 7:45 pm

**GOOFY**  
DK4 Mid (S)  
5:45 pm, 8:00 pm & 9:15 pm

**DAISY DUCK**  
DK5 Mid (S) - 7:45 pm

**DONALD DUCK**  
Preludes - 9:45 pm

(P) - Port Side, (S) Starboard Side

For details of daily Disney character appearances, refer to the character line on your Navigator Grid, or the digital character board in the Lobby Atrium.

### SHIP DIRECTORY

#### YOUTH ACTIVITIES

DISNEY'S OCEANEER CLUB	DECK 5, MID	12:30 PM - 3:45 PM 4:45 PM - 12:00 AM
DISNEY'S OCEANEER LAB	DECK 5, MID	12:30 PM - 3:45 PM 4:45 PM - 12:00 AM
EDGE	DECK 9, MID	12:30 PM - 3:45 PM 4:45 PM - 12:00 AM
IT'S A SMALL WORLD NURSERY	DECK 5, AFT	12:30 PM - 3:45 PM 4:45 PM - 11:00 PM
VIBE	DECK 10, MID	12:30 PM - 3:45 PM 4:45 PM - 12:00 AM

#### POOLS

\*Children under 12 years of age must have adult supervision in all pools.

AQUADUNK	DECK 10, MID	12:00 PM - 3:00 PM 6:00 PM - 8:00 PM
AQUALAB	DECK 9, AFT	12:00 PM - 3:30 PM 4:30 PM - 8:00 PM
GOOFY'S POOL	DECK 9, MID	12:00 PM - 3:30 PM 6:00 PM - 9:00 PM
NEPHEWS' SPLASH ZONE	DECK 9, AFT	12:00 PM - 3:30 PM 4:30 PM - 6:00 PM
QUIET COVE POOL (18+)	DECK 9, FWD	12:00 PM - 11:00 PM
TWIST 'N' SPOUT	DECK 9, AFT	12:00 PM - 3:00 PM 4:30 PM - 8:00 PM

Please note, "selfie sticks" are not permitted in the pools or on the slides.  
Complimentary pool vests are available for children to use in the pools onboard.  
They are located on the pool deck.

#### RECREATION

PORT ADVENTURES DESK	DECK 3, MID	12:00 PM - 3:30 PM 4:30 PM - 6:00 PM 7:00 PM - 8:30 PM
SENSES FITNESS CENTER (18+)	DECK 9, FWD	11:30 AM - 10:00 PM
WIDE WORLD OF SPORTS DECK	DECK 10, FWD	24 HOURS

#### GENERAL INFORMATION

BUENA VISTA THEATRE	DECK 5, AFT	SHOWTIMES
CONNECT@SEA DESK	DECK 3, AFT	1:00 PM - 4:00 PM 7:00 PM - 10:00 PM
DISNEY VACATION CLUB DESK	DECK 4, MID	5:30 PM - 10:00 PM
DISNEY VACATION PLANNING	DECK 4, MID	7:30 PM - 8:30 PM
FUNNEL VISION	DECK 9, MID	SHOWTIMES
GUEST SERVICES	DECK 3, MID	24 HOURS
HAIR BRAIDING	DECK 9, MID	6:00 PM - 8:00 PM
MEDICAL HEALTH CENTER	DECK 1, FWD	4:30 PM - 7:00 PM
PORT SHOPPING DESK	DECK 3, MID	7:30 PM - 8:30 PM
PRELUDES	DECK 4, FWD	5:30 PM - 9:00 PM
SENSES SPA AND SALON	DECK 9, FWD	11:30 AM - 10:00 PM
SHUTTERS PHOTO GALLERY	DECK 4, AFT	6:30 PM - 10:00 PM
WALT DISNEY THEATRE	DECK 4, FWD	SHOWTIMES

#### SHOPPING

BIBBIDI BOBBIDI BOUTIQUE	DECK 10, FWD	12:00 PM - 3:00 PM 5:00 PM - 9:00 PM
MICKEY'S MAINSAIL	DECK 4, FWD	6:00 PM - 11:00 PM
QUACKS	DECK 9, MID	
SEA TREASURES	DECK 3, FWD	6:00 PM - 11:00 PM
VISTA GALLERY	DECK 4, MID	6:00 PM - 11:00 PM
WHITE CAPS	DECK 4, FWD	6:00 PM - 11:00 PM

DUE TO PORT REGULATIONS, WHEN THE SHIP IS DOCKED, THE STORES MUST REMAIN CLOSED.

EVENING ATTIRE Cruise Casual

WEATHER Today: Partly Sunny  
FORECAST High: 80°F/27°C

### DINING & LOUNGES

#### LUNCH

CABANAS	DECK 9, AFT	12:00 PM - 3:15 PM
CARIOCA'S	DECK 3, AFT	11:45 AM - 1:45 PM
DAISY'S DE LITES	DECK 9, AFT	12:00 PM - 3:30 PM 4:15 PM - 6:00 PM
PETE'S BOILER BITES	DECK 9, AFT	12:00 PM - 3:30 PM 4:15 PM - 6:00 PM
PINOCCHIO'S PIZZERIA	DECK 9, MID	12:00 PM - 3:30 PM 4:15 PM - 6:00 PM

#### DINNER

ANIMATOR'S PALATE	DECK 4, AFT	5:45 PM & 8:15 PM
CARIOCA'S	DECK 3, AFT	5:45 PM & 8:15 PM
LUMIERE'S	DECK 3, MID	5:45 PM & 8:15 PM
PALO (18+) (FOR RESERVATIONS CALL 7-8843)	DECK 10, AFT	6:00 PM - 8:30 PM
PETE'S BOILER BITES	DECK 9, AFT	6:00 PM - 10:00 PM

#### LATE NIGHT SNACKS

O'GILLS PUB	DECK 3, FWD	10:45 PM - 11:30 PM
PINOCCHIO'S PIZZERIA	DECK 9, MID	9:30 PM - 12:00 AM
PROMENADE LOUNGE	DECK 3, AFT	10:45 PM - 11:30 PM

#### ADDED FEATURES

EYE SCREAM	DECK 9, AFT	12:00 PM - 11:00 PM
BEVERAGE STATION	DECK 9, AFT	24 HOURS
ROOM SERVICE	DIAL 7-4330	24 HOURS

#### ENTERTAINMENT - LOUNGES - BARS

Adults must be 21 and older to consume alcoholic beverages.

AFTER HOURS	DECK 3, FWD	(AFTER 9:00 PM. ADULTS ONLY)
COVE CAFE (18+)	DECK 9, MID	11:30 AM - 12:00 AM
D LOUNGE	DECK 4, MID	SHOWTIMES
FATHOMS (18+)	DECK 3, FWD	7:00 PM - 2:00 AM
FROZONE TREATS	DECK 9, AFT	11:30 AM - 6:00 PM
KEYS (18+)	DECK 3, FWD	6:00 PM - 12:00 AM
O'GILLS PUB (18+)	DECK 3, FWD	11:30 AM - 12:00 AM
PRELUDES	DECK 4, FWD	5:30 PM - 9:00 PM
PROMENADE LOUNGE	DECK 3, AFT	11:30 AM - 12:00 AM
PINOCCHIO'S PIZZERIA	DECK 9, MID	11:30 AM - 12:00 AM
SIGNALS (18+)	DECK 9, FWD	11:30 AM - 11:00 PM

Public Health Advisory: Consuming raw or undercooked meats, poultry, seafood, shellfish, or eggs may increase your risk for foodborne illness, especially if you have certain medical condition.



Explore and more with our carefully selected Port Adventures. Pass by the Port Adventures Desk, Deck 3, Midship to find out more.

#### IMPORTANT NUMBERS

Fire/Security: 7-3001  
Medical EMERGENCY: 7-3000  
Health Center: 7-1927