

# VOYAGE NAVIGATOR

SATURDAY  
SEPTEMBER 16, 2017

TO

WEDNESDAY  
SEPTEMBER 27, 2017

## CRUISE HIGHLIGHTS

### SATURDAY

BARCELONA  
Port Departure: 6:00 pm  
All Aboard: 5:00 pm  
Attire: Cruise Casual



**BE OUR GUEST - WELCOME ABOARD SHOW**  
Walt Disney Theatre  
6:30 pm & 8:45 pm

### SUNDAY

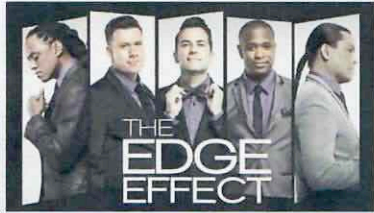
DAY AT SEA  
Attire: Formal



**SHOWTIME: JUNNK**  
Walt Disney Theatre  
6:30 pm & 8:45 pm

### MONDAY

CADIZ  
All Ashore: 8:00 am  
All Aboard: 4:45 pm  
Attire: Cruise Casual



**SHOWTIME: EDGE EFFECT**  
Walt Disney Theatre  
6:30 pm & 8:45 pm

### TUESDAY

LISBON  
All Ashore: 8:30 am  
All Aboard: 3:45 pm  
Attire: Cruise Casual



**SHOWTIME: PETE MATTHEWS**  
Walt Disney Theatre  
6:30 pm & 8:45 pm

### WEDNESDAY

DAY AT SEA  
Attire: Cruise Casual



**TANGLED: THE MUSICAL**  
Walt Disney Theatre  
6:30 pm & 8:45 pm

### THURSDAY

PONTA DELGADA  
All Ashore: 8:15 am  
All Aboard: 2:00 pm  
Attire: Cruise Casual



**SHOWTIME: ABBAFAB**  
Walt Disney Theatre  
6:30 pm & 8:45 pm

### FRIDAY

DAY AT SEA  
Attire: Pirate or Cruise Casual



**SHOWTIME: JOHN CHARLES**  
Walt Disney Theatre  
6:30 pm & 8:45 pm

### SATURDAY

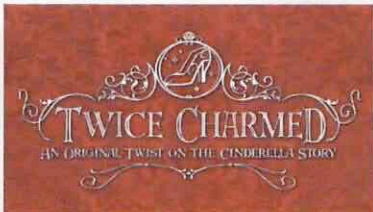
DAY AT SEA  
Attire: Cruise Casual



**ONCE UPON A SONG**  
Walt Disney Theatre  
6:30 pm & 8:45 pm

### SUNDAY

ST. JOHN'S  
All Ashore: 9:30 am  
All Aboard: 6:00 pm  
Attire: Cruise Casual



**TWICE CHARMED**  
Walt Disney Theatre  
6:30 pm & 8:45 pm

### MONDAY

DAY AT SEA  
Attire: Semi Formal



**SHOWTIME: DREW SEELEY**  
Walt Disney Theatre  
6:30 pm & 8:45 pm

### TUESDAY

DAY AT SEA  
Attire: Cruise Casual



**DISNEY DREAMS: AN ENCHANTED CLASSIC**  
Walt Disney Theatre  
6:30 pm & 8:45 pm

Subject to change.

## WELCOME ABOARD!

### YOUR STATEROOM & LUGGAGE

Staterooms will be ready at 1:30 pm. To allow your Stateroom Host/ess time to prepare your room, please do not remove the blue stanchion straps. Stateroom hosts will deliver luggage throughout the day until 5:30 pm.

### STATEROOMS WITH BUNK BEDS

Bunk beds are recessed into the ceiling and will be prepared during evening turndown service by your Stateroom Host/ess.

### STATEROOM SAFE

Each stateroom is equipped with a secured storage safe. Instructions for use are located on the safe.

### TO CHANGE DINING ASSIGNMENT

Requests for different seating times will be taken today: 11:45 am - 3:00 pm; Book in Lumière's, Deck 3, Midship or please dial 7-1831 and leave a voicemail.

### PALO DINING RESERVATIONS

Reservations are required and will be taken on a first come basis today: 11:45 am - 3:00 pm Lumière's, Deck 3, Midship, or please dial 7-6843 and leave a voicemail.

### DINNER

6:00 pm - First seating 8:30 pm - Second seating A = Animator's Palate, Deck 4, Aft L = Lumière's, Deck 3, Midship C = Cariocas, Deck 3, Aft

Please check your Key To The World Card or for details of your dining rotation, and bring it to your specific dining location. There is no need to wait in line prior to dinner. Dining Rooms open at designated seating times and your table is reserved each night of your cruise.

**IMPORTANT NUMBERS** Fire/Security: 7-3001 Medical Emergency: 7-3000 Health Center: 7-1927

# ADULT ACTIVITY HIGHLIGHTS



Senses Spa & Salon has a variety of seminars and fitness classes available throughout the cruise. Pamper yourself with therapeutic spa treatments of heat, steam, rain and water in luxurious and tranquil private rooms. Deck 9, Forward.

## BEVERAGE SEMINARS

Your Beverage team has a host of tastings and seminars to entertain and educate you. Stop by Lumière's, Deck 3, Midship, 12:00 - 3:00 pm or Guest Services, Deck 3, Midship after today to pre-book these experiences (nominal fee applies).

Mixology - Stem to Stern Wine Tasting - Martini Tasting - Champagne Tasting - Cognac Tasting - Whisky Tasting - Amari Tasting - Tequila & Margarita Tasting - Chocolate & Liquor Tasting - Rum Tasting



**FEATURING LARS LEICHT - BANFI VINTNERS WINE**  
Few know Banfi Vintners and its wines better than Lars Leicht, its Director of Trade Development, and a man passionate about the relationship between food and wine. An amateur winemaker and accomplished chef, he has developed and lead cooking and wine pairing classes as well as themed winemaker dinners. He works closely with the Guild of Sommeliers to guide in-depth educational enrichment trips to the vineyards and wineries of Italy.

## FEATURED VARIETY ACTS THIS VOYAGE



### THE MUSIC OF GARY LOVINI

Gary Lovini was the first violinist to successfully bridge the gap between classical and popular music. A true showman, he captivates audiences of all nationalities, ages and tastes and language is no barrier to the talents of this world class entertainer.



### THE ACAPELLA VOCALS OF EDGE EFFECT

The innovative vocal collaboration, The Edge Effect is taking music to a whole new level, and in ways you might not expect. The Edge Effect combines pop, R & B, jazz, rock, and funk in a vocal show unlike any other. The Edge Effect's signature

sound blurs the genre line and weaves a colorful tapestry of infectious beats, intricate harmonies, and spectacular vocal acrobatics. Their vast repertoire knows no boundaries to style or genre, and the band's stunning reinterpretations of musical favorites, as well as inventive, contemporary original songs, make for an unparalleled entertainment experience for all ages.



### THE COMEDY & RHYTHM OF JUNNK

JunNk use bins, bottles, ladders and drainpipes to create a lively, hilarious and utterly enthralling fast paced show, providing a fresh outlook on today's modern entertainment scene.



### THE PHYSICAL COMEDY OF PETE MATTHEWS

With his infectious enthusiasm, his rapid-fire wit and highly skilled juggling, Pete will no doubt change your opinion of jugglers. Widely recognized as the UK's Premier Comedy Juggler, Pete's early career kick started in 1990 with TV appearances on "Barrymore" and "You Bet!"



### THE ENERGETIC MUSIC OF ABBAFAB

AbbaFab is a collection of some of the finest musicians in the USA who have come together to produce the accurate reproduction of Abba's unique sound. This is so much more than a tribute band - The AbbaFab experience is something you will never forget!



### THE MUSIC & COMEDY OF JOHN CHARLES

With just his guitar, and his incredible singing voice, John Charles amazes his audience with his ability to combine music, comedy and audience interaction. No two shows are ever alike!



### THE MUSICAL COMEDY OF GRAFFITI CLASSICS

Graffiti Classics was founded in 1997 by Cathal O'Duill. Whilst street-performing in Covent Garden (London) he realised that classical music could be made fun for any audience through interaction and comedy. The company has developed a unique antidote to the preconceptions of classical music as stuffy and elitist and succeeds in bringing it to anyone and everyone whatever their age.



### DISNEY ON BROADWAY STAR DREW SEELEY

Disney Theatrical presents the vocal talents of Drew Seeley. Disney on Broadway roles include Prince Eric in "The Little Mermaid," as well as Troy Bolton in the North & South American tours of "High School Musical: The Concert."

# FUN FOR ALL AGES HIGHLIGHTS



## ADVENTURES AWAY

Earn your status as V.I.P. sailors as your Cruise Director, your Disney Pals, and the Cruise Staff officially begin your "Adventures Away".



## CLUB NEW YEAR'S EVE

Club New Year's Eve, you won't want to miss this journey of musical genres throughout history and performances by some of your favorite Cruise Staff. Bring your family and help us count down to a brand new year!



## DISNEY JUNIOR PIRATE & PRINCESS DANCE PARTY

Calling all Pirates and Princesses! Come join us for a family dance party featuring music and fun activities from Jake & the Neverland Pirates and Sofia the First. Whether you favor tiaras or treasure chests, there's something for you at our Disney Junior Pirate & Princess Dance Party!



## DISNEY VACATION CLUB GROUP PREVIEW

Want to learn more about taking magical vacations year after year? Please see a Disney Vacation Club Cast Member on Deck 4, Midship, or call 7-2805 from your stateroom phone for more information about our interactive group presentation.



## FAMILY TALENT SHOW SIGN UP

Pre-register at the Port Adventures Desk, Deck 3, Midship Let your family take center stage and strut their stuff. Everyone has a talent, it's time to show off yours! Pre-register at the Port Adventures Desk.



## FREEZING THE NIGHT AWAY WITH ANNA, ELSA AND FRIENDS!

It's a Big Summer Blowout! Come join some of your favorite Frozen friends and Arendelle's royal party planners on Deck 9 for the best deck celebration on this side of the fjord! (Weather Permitting)



## JACKPOT BINGO

CASH prizes and raffle prizes to be won in our family friendly Bingo sessions with your Cruise Staff. Those under the age of 18 must be accompanied by an adult to play.



## MICKEY 200

Don't eat your vegetables... race them in this wild and wacky charge to the finish line. May the best veggie win! (Limited Availability)



## PIRATES IN THE CARIBBEAN DECK PARTY

Yer Disney Friends are all set for a swashbucklin' good time! It's a Pirate Celebration, me hearties! Hoist yourself to Deck 9 to enjoy a rowdy buccaneer bash we call Pirates IN the Caribbean Deck Party.



## SALUDOS AMIGOS FIESTA

Come see what Donald and his friends are up to this time. Bring the family out to this interactive dance party featuring fun Latin music! Your family will learn to salsa, merengue and just have a Latin good time!



## SO YOU THINK YOU KNOW YOUR FAMILY?

This fun-filled family game show is always full of surprises. Find out how well you know, or don't know your family!



## TIL WE MEET AGAIN

The world-famous Disney Characters and some of your new friends from the Disney Magic stage shows bid you a charming farewell.



## WHO WANTS TO BE A MOUSEKETEER?

Your chance to get into the "hot seat" and win limited edition prizes. Or, play along as part of our live studio audience.

## FEATURED GUEST PRESENTER: JEFF KURTTI

An author of more than thirty books, a writer-director-producer of award-winning documentaries, and a respected public speaker, host, and moderator, Kurtti is an expert on pop culture and entertainment. His video productions have been seen on "The Academy Awards@," Turner Classic Movies and "The Wonderful World of Disney." In 2009 Kurtti was one of the producers of The Boys: The Sherman Brothers Story, a critically acclaimed feature-length documentary about the songwriting duo of Richard M. Sherman and Robert B. Sherman. Since 1995 Kurtti has enjoyed a career as an author and creative consultant in the motion picture, theatre, and themed entertainment industries. Prior to his freelance career he worked for Walt Disney Imagineering, the theme park design division of The Walt Disney Company, and then for the Corporate Special Projects department of Disney.

Please check your daily Personal Navigator for all times and locations.

# YOUTH ACTIVITIES INFO & HIGHLIGHTS



## Dine & Play

As a convenience for families dining at 8:30 pm, our Youth Activities Counselors will be available at 9:30 pm at the entrance of Lumiere's and Carioca's and at 9:45 pm at the entrance of Animator's Palette to bring registered children to join the fun in Disney's Oceaneer Club and Disney's Oceaneer Lab.

## Pre-School Fun

Disney's Oceaneer Club is reserved for only those between 3-5 years of age. This is a time for them to become acclimated to Disney's Oceaneer Club, make new friends and join in on a lot of fun-filled programs and activities. Please note after Pre-School Fun has concluded, Disney's Oceaneer Club will be open for Secured Programming for ages 3-12.

## Youth Activities Open House

Open House is an opportunity for all to come and participate in a variety of exciting activities and free time in the Oceaneer Club, Oceaneer Lab, Edge and Vibe throughout the cruise. During these times secured programming will still be offered in the other venue for those looking to check their children into care.

## Youth Activities Venue Tour

Come and take a tour of Disney's Oceaneer Club and Disney's Oceaneer Lab. This informative tour will give you the information you need to know about our exciting spaces and activities offered for children ages 3-12. Please see your Personal Navigator or the Navigator App for times.

## COAST TO COAST CHARACTER CAMP OUT



Pick up your tickets today to reserve your place for the Youth Activities Coast To Coast Campout. This overnight event will be happening on Thursday, September 21st at 9:30 pm and will be an opportunity to participate in activities throughout the evening and have a bedtime story read to your child in Disney's Oceaneer Lab by a very special visitor. These tickets are on a first come first serve basis, so book your tickets now at the Oceaneer Club or Oceaneer Lab, Deck 5 Midship to not miss out on this magical event.

3 - 12 years old



## BECOME IRON MAN!

Do you want to be Iron Man? Marvel's Avengers Academy invites you to virtually suit up in Iron Man's armor for an exciting interactive training gauntlet.

## TOY STORY BOOT CAMP

Join Corporal Green in our own version of boot camp as we learn how to have fun - The Toy Story way!

Oceaneer Lab 3 - 12 years old

## SUPER SLOPPY SCIENCE

Join Professor Make-O-Mess in some of the most extreme experiments you will ever see in the world of Super Sloppy Science!

## PISTON CUP

It's Dinoco time and you're part of the pit crew! Design your own race car and see if you've got what it takes to end up in the winner's circle!



11 - 14 years old

## HEROES VS. VILLAINS

Join your favorite hero or villain team on a series of activities that will take place throughout the cruise.

## THAT'S HILARIOUS

Ever wanted to show off your comedy skills? Then be a part of the cast for the crazy improv show "That's Hilarious" and put on a live show for your friends.



14 - 17 years old

## A PIRATE'S LIFE FOR ME

Yo ho, yo ho, a Pirate's Life for Me! Aarrgh me mateys! Put your knowledge to the test!

## HOMECOMING

Come and join your fellow teens in our very own version of "Homecoming" and dance the night away.

# BUENA VISTA THEATRE

Deck 5, Midship

## FEATURE MOVIES THIS VOYAGE

### SATURDAY - BARCELONA

6:00 pm	G	Cars 3	3D
8:15 pm	G	Cars 3	3D
10:30 pm	PG-13	Star Wars: The Force Awakens	

### SUNDAY - DAY AT SEA

8:30 am	G	Born in China	
1:45 pm	PG-13	Disney's Newsies the Broadway Musical	
5:15 pm	PG-13	Spider-Man: Homecoming	3D
8:00 pm	PG-13	Spider-Man: Homecoming	3D
10:45 pm	PG-13	Rogue One: A Star Wars Story	

### MONDAY - CADIZ

8:30 am	PG	Moana	
11:00 am	G	Born in China	
1:45 pm	PG-13	Star Wars: The Force Awakens	3D
5:15 pm	PG	Beauty and the Beast (2017)	
8:00 pm	PG	Beauty and the Beast (2017)	
10:30 pm	PG	Disney's Newsies the Broadway Musical	

### TUESDAY - LISBON

11:00 am	PG	Moana	
1:45 pm	PG-13	Rogue One: A Star Wars Story	3D
5:15 pm	PG-13	Guardians of the Galaxy Vol. 2	3D
8:15 pm	PG-13	Guardians of the Galaxy Vol. 2	3D
11:00 pm	PG-13	Spider-Man: Homecoming	

### WEDNESDAY - DAY AT SEA

8:30 am	G	Cars 3	
10:45 am	PG-13	Pirates of the Caribbean: Dead Men Tell No Tales	cc Open Captioning
1:45 pm	PG-13	Movie Classic: Forrest Gump	
5:30 pm	PG-13	Dr. Strange	
8:15 pm	PG-13	Dr. Strange	
10:45 pm	PG-13	Movie Classic: Dirty Dancing	

### THURSDAY - PONTA DELGADA

2:00 pm	PG-13	Guardians of the Galaxy Vol. 2	cc Open Captioning
5:15 pm	PG	Moana	3D
8:15 pm	PG	Moana	3D
10:30 pm	PG-13	Movie Classic: Forrest Gump	

### FRIDAY - DAY AT SEA

8:30 am	PG	Moana	cc Open Captioning
11:00 am	PG-13	Dr. Strange	3D
1:45 pm	PG	Movie Classic: Dead Poet's Society	
5:15 pm	PG-13	Pirates of the Caribbean: Dead Men Tell No Tales	3D
8:00 pm	PG-13	Pirates of the Caribbean: Dead Men Tell No Tales	cc Open Captioning
10:30 pm	PG	Disney's Newsies the Broadway Musical	

### SATURDAY - DAY AT SEA

8:30 am	PG	Beauty and the Beast (2017)	
11:00 am	G	Cars 3	3D
1:45 pm	PG	Movie Classic: Out of Africa	
5:15 pm	PG-13	Spider-Man: Homecoming	
8:00 pm	PG-13	Spider-Man: Homecoming	
10:30 pm	PG	Movie Classic: Dead Poet's Society	

### SUNDAY - ST. JOHN'S

8:30 am	G	Born in China	
11:00 am	PG-13	Spider-Man: Homecoming	3D
1:45 pm	G	Disney's Broadway Hits at Royal Albert Hall	
5:15 pm	PG	Beauty and the Beast (2017)	
8:00 pm	PG	Beauty and the Beast (2017)	
10:30 pm	PG	Movie Classic: Out of Africa	

### MONDAY - DAY AT SEA

8:30 am	G	Cars 3	
11:00 am	PG	Beauty and the Beast (2017)	cc Open Captioning
1:45 pm	PG-13	Movie Classic: Dirty Dancing	
5:15 pm	PG-13	Guardians of the Galaxy Vol. 2	3D
8:15 pm	PG-13	Guardians of the Galaxy Vol. 2	3D
11:00 pm	PG-13	Dr. Strange	cc Open Captioning

### TUESDAY - DAY AT SEA

8:30 am	PG	Moana	
11:00 am	PG-13	Spider-Man: Homecoming	cc Open Captioning
1:45 pm	PG-13	Pirates of the Caribbean: Dead Men Tell No Tales	
6:00 pm	G	Cars 3	3D
8:15 pm	G	Cars 3	3D
11:00 pm	G	Disney's Broadway Hits at Royal Albert Hall	

Subject to change.

# MORE TO ENJOY ONBOARD

## BOOK ONBOARD AND SAVE!

Explore all the itineraries Disney Cruise Line offers - from the Caribbean and Bahamas to Alaska or Europe. Save when you book your next family adventure onboard! Visit the Disney Vacation Planning desk, Deck 4, Midship, for more information. Disney Vacation Planning tends to get busy on the last day of sailing. Don't miss the opportunity to plan your next Disney vacation.

## DISNEY VACATION CLUB® GROUP PREVIEW

Want to learn more about taking magical vacations year after year? Please see a Disney Vacation Club Cast Member on Deck 4, Midship, or call 7-2805 from your stateroom phone for more information about our interactive group presentation.

## PORT SHOPPING INFORMATION

Meet Gemma, your Port Shopping Guide, for hints, tips and know how when it comes to shopping ashore this cruise! Gemma has great recommendations for the whole family and will show you how to maximize your time in our ports of call with money saving tips! Visit Gemma at the Port Shopping Desk, Deck 3, Midship between 7:30 pm & 8:30 pm tonight for a free gift.

## Connect@Sea

### FREE INTERNET EMBARKATION DAY SPECIAL

Sign up for a free 50 MB Internet package today and enjoy it throughout the cruise! This offer is only available from noon to midnight on the day your cruise begins. On your wireless device, simply find the "DCL-Guest" Wi-Fi Network, go to [www.dclguest.com](http://www.dclguest.com) to create an account, and get your free 50 MB of data to start sharing your memories even before you leave port! If you have any questions, ask our Connect@Sea Expert located at Deck 3, Midship. No purchase necessary. The free 50 MB package can only be used for the duration of the cruise. Only one free package per stateroom, but everyone can share it. Unused data from a package will not be reimbursed and it is non-transferable between voyages or ships.

### RELIGIOUS SERVICES

Groups who need a location to practice their faith may contact Guest Services for availability information.

## TRANSPORTATION INFORMATION

Should you wish to purchase transportation to the New York La Guardia or New York John F Kennedy airport, kindly proceed to Guest Services on Deck 3, Midship for further assistance.

## BEHIND THE SCENES: WALT DISNEY THEATRE

Join the Walt Disney Theatre technical team and main stage cast for this once in a lifetime experience as we pull back the curtain and show you how the Walt Disney Theatre works. Pre-booking required. Please visit Guest Services, Deck 3, Midship.



## CANVAS AND COCKTAILS (21+)

Create your own Beauty and the Beast or Pirates inspired painting during this adult-only event. You'll learn to paint Disney style while enjoying 3 of Disney Cruise Line's most popular cocktails. NOTE - There is a nominal fee for this event. Pre-booking required. Please visit Guest Services, Deck 3, Midship.



## SENSES SPA & SALON



### DECK 9, FORWARD Extension 7-1465

#### RAINFOREST

Come enjoy our serenity lounge, with heated chairs, dry sauna, aromatherapy steam rooms and rainfall, misting showers.

Couples Cruise Pass - \$311 ~ Single Cruise Pass - \$210

#### IONITHERMIE

Lose between 1 - 8 inches? Speed up your metabolism. Firm muscle tone. Improve appearance of cellulite. \$155/1 session or \$497/5 sessions.

#### ONBOARD ACUPUNCTURE

Naturally effective for pain, arthritis, sea sickness, stress, digestion, weight loss, and much more. \$150/session or \$550/5 sessions.

#### ELEMIS BIOTEC

8 different Facial treatments available based on your specific concerns or needs. Technology turbo charges the concept of touch. The clinically proven result is visibly healthy, nourished and energized skin.

#### REJUVENATION SPA CONSULTATIONS

Ready to enhance your natural beauty? Book your free Facial Rejuvenation consultation with our Rejuvenation Doctor at the Senses Spa.

**AN 18% AUTO GRATUITY IS ADDED TO ALL SENSES SPA SERVICES.**

## MERCHANDISE SHOPPING



### DECK 4, FORWARD

#### TRANSATLANTIC SPECIAL DESIGN MERCHANDISE

Visit the onboard shops today to discover specially designed DCL Transatlantic merchandise, including tee's, a tumbler and more. Deck 4, Forward.

#### HELPFUL SHOPPING TIP

While shopping onboard, you may collect your items from both stores before proceeding to checkout at any register. No need to have to wait in line in each store to pay for your items separately! Mickey's Mainsail and White Caps, Deck 4, Forward.

#### VISTA GALLERY - MORE TO ENJOY WHILE ONBOARD

Welcome onboard, take a minute to stroll through the Vista Gallery on Deck 4, Midship and discover special themed Disney artwork. Find a selection of fine art, giclees, lithographs, and original Disney art.

#### MARVEL SUPERHERO MERCHANDISE

Stop by Sea Treasures, Deck 3, Forward and discover exciting merchandise of some of your favorite Marvel Superheroes!

#### BIBBIDI BOBBIDI BOUTIQUE

A makeover fit for a princess! Fairy Godmothers-in-Training are ready with magic and pixie dust to give your Prince and Princess the transformation of a lifetime. Make your reservations by visiting Bibbidi Bobbidi Boutique, Deck 10, Forward, Port Side, or dialing extension 7-1492. Limited space available.

**DUE TO PORT REGULATIONS, WHEN THE SHIP IS DOCKED, THE STORES WILL REMAIN CLOSED.**

## SHUTTERS PHOTO GALLERY



### DECK 4, AFT

#### WELCOME ABOARD RAFFLE

Your embarkation photos will be available for viewing at 6:30pm. Visit Shutters on Deck 4 Aft and drop your raffle coupon for a chance to win a 10 Digital Photo package with a \$149.95 value.

#### OUR CRUISE PHOTOS DIGITAL!

Your embarkation photos will be available for viewing at 6:30 pm.

\*Terms and conditions apply.

Visit Shutters on Deck 4, Aft for more information.

#### FORMAL PORTRAITS

Formal portraits will be available Day at Sea 1 in the Lobby Atrium, Deck 3, Midship from 5:15pm - 6:15pm, 7:30pm - 8:45pm & 9:45pm - 10:30pm

#### PHOTO BOOK

Turn your magical vacation memories into an impressive keepsake, a personal one of a kind Photo Book. Fill every page with memories of your cruise vacation. Orders close at 9:00 pm on the last day of the cruise.

#### DISNEY HOLIDAY CARDS

Share the Magic of your vacation experience with family and friends by sending them an exclusive Disney Cruise Line themed holiday card. Visit Shutters today on Deck 4, Aft for more details.

**PHOTOS ARE AVAILABLE FOR VIEWING ON OUR INTERACTIVE PHOTO KIOSKS APPROXIMATELY FIVE HOURS AFTER BEING TAKEN AND ARE ONLY AVAILABLE FOR PURCHASE DURING THIS CRUISE.**

## IMPORTANT INFORMATION

### Security Notice

All Guests (including children) who wish to disembark the ship are required to present their Key to the World card at the gangway. A photo ID is also required for those Guests who are 18 years of age or older. Guests under the age of 18 are required to have a parent, guardian or other responsible adult sign an authorization form at the Guest Service Desk if they wish to go ashore unaccompanied or with any adult from another stateroom.

### Inclement Weather

For the safety of all Guests, outdoor events may be changed due to unforeseen weather conditions.

### Insect Repellent Advisory

The Centers for Disease Control and Prevention recommends wearing long-sleeved shirts and pants along with insect repellent to protect against mosquito bites and related illnesses when going ashore. Complimentary insect repellent is available on the pier as you exit the ship. Insect repellent is also available for purchase in White Caps. When using both sunscreen and insect repellent, use sunscreen first and apply insect repellent on top of sunscreen.

### Corridor Quiet Hours

As a courtesy to all our Guests, please recognize quiet hallway hours from 10:00 pm til 8:00 am.

### Environmental Message

With Disney's commitment to the Environment, please refrain from throwing anything over the Ship's side. Thank you!

### No Reserved Seats Policy

As a courtesy to all our Guests, we kindly advise that the saving of seats is not permitted in the Walt Disney Theatre, and the saving of the sun loungers is not permitted on Deck 9 and 10. Items left unattended will be returned to lost and found at Guest Services, Deck 3 Midship.

### Cold and Flu Reminder

Please wash hands frequently and thoroughly, particularly before meals. Contact the Health Center by dialing 7-1927, should anyone in your party become ill.

### Smoking

For the comfort of our Guests, the following areas are designated as smoking areas:

\*Deck 9, Forward, Port Side by 6:00 am only (all of Deck 4 is non-smoking from 6:00 am to 6:00 pm)  
Smoking is prohibited inside all Guest staterooms and on stateroom verandahs. Guests found smoking in their staterooms or on their verandahs will be charged a \$250 stateroom recovery fee. Electronic cigarettes may only be used in designated smoking areas.

### Walt Disney Theatre

Theatrical performances may use artificial fog, strobe lights, pyrotechnics and other special effects. For the safety of our performers and the comfort of those around you, the use of any photography, video recording device or any electronic equipment is prohibited.

### Verandah Safety

Please do not leave any personal items on your verandah that may be blown overboard or present a fire hazard if left unattended. Guests should not sit, lean or climb on the railing or leave children unattended on the verandah. Do not open the verandah and stateroom doors simultaneously as this may create a wind effect and could cause the doors to slam unexpectedly.





**Be our Guest!**

WELCOME ABOARD SHOW

**WALT DISNEY THEATRE**

Deck 4, Forward  
6:30 pm & 8:45 pm

As a courtesy to all Guests, we kindly advise that the saving of seats is **not** permitted in the Walt Disney Theatre.

Assistance is available at the entrance to the Walt Disney Theatre 30 minutes prior to show time.

**Character Meet & Greet Ticket Distribution**

Port Adventures Desk, Deck 3, Midship - 12:00 pm - 2:00 pm

For Guests who did not reserve meet and greets online, a limited number of tickets are available today to meet some of your favorite Disney friends.

Princess Gathering ~ Frozen Gathering

VIP Character Breakfast

Tickets are required for each of these meet and greets.

Space is limited.

**Character Appearances**

**BELLE**  
DK4 Mid (S) - 12:30 pm

**CINDERELLA**  
DK4 Mid (S) - 1:15 pm

**ADVENTURES AWAY**  
Deck 9 Stage - 5:00 pm

**MICKY MOUSE**  
DK4 Mid (S) - 5:30 pm  
Lobby Atrium (P)  
8:00 pm & 10:00 pm

**PLUTO**  
DK4 Mid (S) - 6:00 pm

**MINNIE MOUSE**  
Lobby Atrium (P)  
7:30 pm & 9:30 pm



(P) - Port Side, (S) Starboard Side

For details of daily Disney character appearances, refer to the character line on your Navigator Grid, or the digital character board in the Lobby Atrium.

**SHIP DIRECTORY**

**YOUTH ACTIVITIES**

DISNEY'S OCEANEER CLUB	DECK 5, MID	12:30 PM - 4:00 PM 4:45 PM - 12:00 AM
DISNEY'S OCEANEER LAB	DECK 5, MID	12:30 PM - 4:00 PM 4:45 PM - 12:00 AM
EDGE	DECK 9, MID	12:30 PM - 4:00 PM 4:45 PM - 12:00 AM
IT'S A SMALL WORLD NURSERY	DECK 5, AFT	12:30 PM - 4:00 PM 4:45 PM - 11:00 PM
VIBE	DECK 10, MID	12:30 PM - 4:00 PM 4:45 PM - 12:00 AM

**POOLS**

\*Children under 12 years of age must have adult supervision in all pools.

AQUADUNK	DECK 10, MID	12:00 PM - 3:30 PM 6:30 PM - 8:00 PM
AQUALAB	DECK 9, AFT	12:00 PM - 4:00 PM 5:00 PM - 8:00 PM
GOOFY'S POOL	DECK 9, MID	12:00 PM - 4:00 PM 6:30 PM - 10:00 PM
NEPHEWS' SPLASH ZONE	DECK 9, AFT	12:00 PM - 4:00 PM 5:00 PM - 6:00 PM
QUIET COVE POOL (18+)	DECK 9, FWD	12:00 PM - 11:00 PM
TWIST 'N' SPOUT	DECK 9, AFT	12:00 PM - 3:30 PM 5:00 PM - 9:00 PM

Please note, "selfie sticks" are not permitted in the pools or on the slides.  
Complimentary pool vests are available for children to use in the pools onboard.  
They are located on the pool deck.

**RECREATION**

PORT ADVENTURES DESK	DECK 3, MID	12:00 PM - 4:00 PM 5:00 PM - 6:00 PM 7:00 PM - 8:30 PM
SENSES FITNESS CENTER (18+)	DECK 9, FWD	11:30 AM - 10:00 PM
WIDE WORLD OF SPORTS DECK	DECK 10, FWD	24 HOURS

**GENERAL INFORMATION**

BUENA VISTA THEATRE	DECK 5, AFT	SHOWTIMES
CONNECT@SEA DESK	DECK 3, AFT	1:00 PM - 4:00 PM 7:00 PM - 10:00 PM
DISNEY VACATION CLUB DESK	DECK 4, MID	12:00 PM - 9:00 PM
DISNEY VACATION PLANNING	DECK 4, MID	7:30 PM - 8:30 PM
FUNNEL VISION	DECK 9, MID	SHOWTIMES
GUEST SERVICES	DECK 3, MID	24 HOURS
HAIR BRAIDING	DECK 9, MID	6:00 PM - 8:00 PM
MEDICAL HEALTH CENTER	DECK 1, FWD	4:30 PM - 7:00 PM
PORT SHOPPING DESK	DECK 3, MID	
PRELUDES	DECK 4, FWD	5:30 PM - 9:30 PM
SENSES SPA AND SALON	DECK 9, FWD	11:30 AM - 10:00 PM
SHUTTERS PHOTO GALLERY	DECK 4, AFT	6:30 PM - 10:00 PM
WALT DISNEY THEATRE	DECK 4, FWD	SHOWTIMES

**SHOPPING**

BIBBIDI BOBBIDI BOUTIQUE	DECK 10, FWD	12:00 PM - 3:00 PM 5:00 PM - 9:00 PM
MICKY'S MAINSAIL	DECK 4, FWD	6:30 PM - 11:00 PM
QUACKS	DECK 9, MID	
SEA TREASURES	DECK 3, FWD	6:30 PM - 11:00 PM
VISTA GALLERY	DECK 4, MID	6:30 PM - 11:00 PM
WHITE CAPS	DECK 4, FWD	6:30 PM - 11:00 PM

DUE TO PORT REGULATIONS, WHEN THE SHIP IS DOCKED, THE STORES MUST REMAIN CLOSED.

**EVENING ATTIRE** Cruise Casual

**WEATHER FORECAST** Today: Chance of Rain High: 68°F/20°C

**DINING & LOUNGES**

**LUNCH**

CABANAS	DECK 9, AFT	11:45 AM - 3:30 PM
CARIOCA'S	DECK 3, AFT	11:45 AM - 1:45 PM
DAISY'S DE LITES	DECK 9, AFT	12:00 PM - 4:15 PM 5:00 PM - 6:00 PM
PETE'S BOILER BITES	DECK 9, AFT	12:00 PM - 4:15 PM 5:00 PM - 6:00 PM
PINOCCHIO'S PIZZERIA	DECK 9, MID	12:00 PM - 4:15 PM 5:00 PM - 6:00 PM

**DINNER**

ANIMATOR'S PALATE	DECK 4, AFT	6:00 PM & 8:30 PM
CARIOCA'S	DECK 3, AFT	6:00 PM & 8:30 PM
LUMIERE'S	DECK 3, MID	6:00 PM & 8:30 PM
PALO (18+) (FOR RESERVATIONS CALL 7-8843)	DECK 10, AFT	6:00 PM - 8:30 PM
PETE'S BOILER BITES	DECK 9, AFT	6:00 PM - 10:00 PM

**LATE NIGHT SNACKS**

O'GILLS PUB	DECK 3, FWD	10:45 PM - 11:30 PM
PINOCCHIO'S PIZZERIA	DECK 9, MID	9:30 PM - 12:00 AM
PROMENADE LOUNGE	DECK 3, AFT	10:45 PM - 11:30 PM

**ADDED FEATURES**

EYE SCREAM	DECK 9, AFT	12:00 PM - 4:15 PM 5:00 PM - 11:00 PM
BEVERAGE STATION	DECK 9, AFT	24 HOURS
ROOM SERVICE	DIAL 7-4330	24 HOURS

**ENTERTAINMENT - LOUNGES - BARS**

Adults must be 21 and older to consume alcoholic beverages.

AFTER HOURS	DECK 3, FWD	(AFTER 9:00 PM, ADULTS ONLY)
COVE CAFE (18+)	DECK 9, MID	11:45 AM - 12:00 AM
D LOUNGE	DECK 4, MID	SHOWTIMES
FATHOMS (18+)	DECK 3, FWD	7:00 PM - 2:00 AM
FROZONE TREATS	DECK 9, AFT	11:30 AM - 6:00 PM
KEYS (18+)	DECK 3, FWD	6:00 PM - 12:00 AM
O'GILLS PUB (18+)	DECK 3, FWD	11:45 AM - 12:00 AM
PRELUDES	DECK 4, FWD	5:30 PM - 9:30 PM
PROMENADE LOUNGE	DECK 3, AFT	11:45 AM - 12:00 AM
PINOCCHIO'S PIZZERIA	DECK 9, MID	11:45 AM - 12:00 AM
SIGNALS (18+)	DECK 9, FWD	11:45 AM - 10:00 PM

Public Health Advisory: Consuming raw or undercooked meats, poultry, seafood, shellfish, or eggs may increase your risk for foodborne illness, especially if you have certain medical condition.



Explore and more with our carefully selected Port Adventures. Pass by the Port Adventures Desk, Deck 3, Midship to find out more.

**IMPORTANT NUMBERS**

Fire/Security: 7-3001  
Medical EMERGENCY: 7-3000  
Health Center: 7-1927