

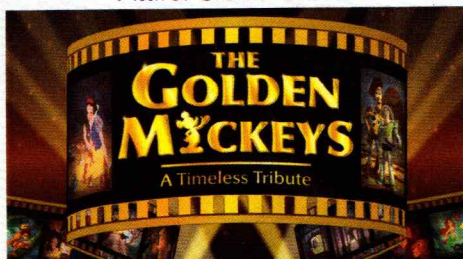
VOYAGE NAVIGATOR

FRIDAY
OCTOBER 13, 2017
TO
MONDAY
OCTOBER 16, 2017

CRUISE HIGHLIGHTS

FRIDAY

PORT CANAVERAL
Port Departure: 5:00 pm
All Aboard: 3:45 pm
Attire: Cruise Casual



THE GOLDEN MICKEYS
Walt Disney Theatre
6:15 pm & 8:30 pm

SATURDAY

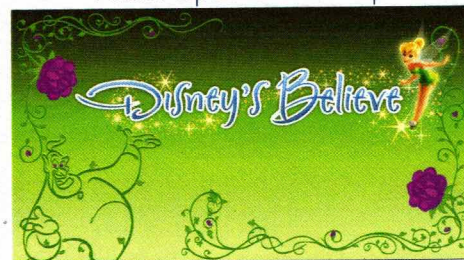
NASSAU
All Ashore: 9:30 am
All Aboard: 5:15 pm
Attire: Halloween/Pirate or Cruise Casual



THE NIGHTMARE BEFORE CHRISTMAS
3D
-SING AND SCREAM-
MOVIE SPECIAL (PG)
Walt Disney Theatre
6:00 pm & 8:30 pm

SUNDAY

DISNEY CASTAWAY CAY
All Ashore: 8:30 am
All Aboard: 4:45 pm
Attire: Optional Dress Up



DISNEY'S BELIEVE
Walt Disney Theatre
6:15 pm & 8:30 pm

Subject to change.

WELCOME ABOARD!

YOUR STATEROOM & LUGGAGE

Staterooms will be ready at 1:30 pm. To allow your Stateroom Host/ess time to prepare your room, please do not remove the blue stanchion straps. Stateroom hosts will deliver luggage throughout the day until 5:30 pm.

STATEROOMS WITH BUNK BEDS

Bunk beds are recessed into the ceiling and will be prepared during evening turndown service by your Stateroom Host/ess.

STATEROOM SAFE

Each stateroom is equipped with a secured storage safe. Instructions for use are located on the safe.

TO CHANGE DINING ASSIGNMENT

Requests for different seating times will be taken today:
1:00 pm - 3:30 pm; Book in Royal Palace, Deck 3, Midship
3:30 pm - 5:00 pm; please dial 7-1831, 7-1832, or 7-1833

REMY & PALO DINING RESERVATIONS

Reservations are required and will be taken on a first come basis today:

1:00 pm - 3:30 pm; Royal Palace

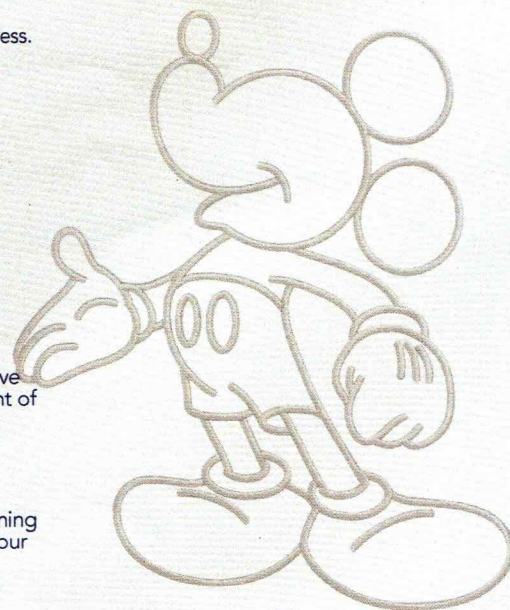
Please dial 7-9734 for Remy or 7-9735 for Palo for more information. Cover charge applicable.

Adult Exclusive Dining Opportunity! Guests are invited to make 2 dinner reservations at our two adult-exclusive restaurants, Palo & Remy. This includes one reservation on embarkation evening and one more on another night of the cruise. Reservations are subject to availability and a specialty dining charge will apply.

DINNER

5:45 pm - First seating 8:15 pm - Second seating
Please check your Key To The World Card for details of your dining rotation, and bring them to your specific dining location. There is no need to wait in line prior to dinner. Dining Rooms open at designated seating times and your table is reserved each night of your cruise.

A = Animator's Palate, Deck 3, Aft E = Enchanted Garden, Deck 2, Midship R = Royal Palace, Deck 3, Midship



Disney Cruise Line
PORT ADVENTURES

Create the most memorable experiences during your Disney Cruise Line vacation with Port Adventures! Our Port Adventures are designed for you to see the best our ports have to offer. Stop by the Port Adventures Desk, Deck 5, Midship where our friendly team will be happy to assist you plan your adventure!
There is an adventure for everyone on your Disney Dream® vacation.

IMPORTANT NUMBERS

Fire/Security: 7-3001

Medical Emergency: 7-3000

Health Center: 7-1927

MORE TO ENJOY ONBOARD

NEW FALL 2018 ITINERARIES

New Fall 2018 Itineraries announced! Set sail for spectacular ports including first time sailings to Bermuda and Quebec City, Canada. Disney Cruise Line will continue sailing to sun-soaked destinations including Bahamian, Caribbean and even Baja cruises! Visit the Disney Vacation Planning Center, Deck 4, Midship for more information. Disney Vacation Planning tends to get busy on the last day of sailing. Don't miss the opportunity to plan your next Disney vacation.

DISNEY VACATION CLUB® MEMBERS CELEBRATION

Members! Mix and mingle with other Members and learn how you can enhance your Membership! Please see a Disney Vacation Club Cast Member on Deck 4, Midship, or call 7-2805 from your stateroom phone for more information.

PORT SHOPPING INFORMATION

Join your Port Shopping Guides Samantha & Richard today at 2:45 pm in the Buena Vista Theatre to learn about the incredible shopping ashore in Nassau! Over \$1,000 in give-a-ways and prizes! Arrive early for free gifts and more! Collect your free ship charm from the Port Shopping Desk, Deck 4, Midship, today from 6:00 pm - 8:00 pm.

Connect@Sea

FREE INTERNET EMBARKATION DAY SPECIAL

Sign up for a free 50 MB Internet package today and enjoy it throughout the cruise! This offer is only available from noon to midnight on the day your cruise begins. On your wireless device, simply find the "DCL-Guest" Wi-Fi Network, go to www.dclguest.com to create an account, and get your free 50 MB of data to start sharing your memories even before you leave port! If you have any questions, ask our Connect@Sea Expert located at Deck 4, Midship. No purchase necessary. The free 50 MB package can only be used for the duration of the cruise. Only one free package per stateroom, but everyone can share it. Unused data from a package will not be reimbursed and it is non-transferable between voyages or ships.

RELIGIOUS SERVICES

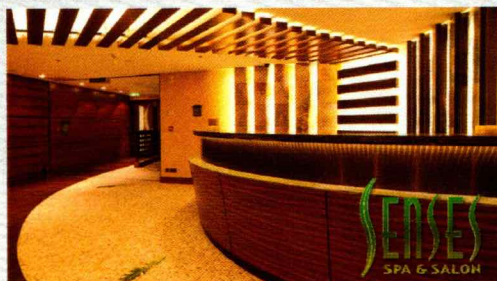
Groups who need a location to practice their faith may contact Guest Services for availability information.

BOOK ONBOARD AND SAVE!

Explore all the itineraries Disney Cruise Line offers - from the Caribbean and Bahamas to Alaska or Europe. Save when you book your next family adventure onboard!



SENSES SPA & SALON



DECK 11, FORWARD

Extension 7-1465

RAINFOREST

Come enjoy our serenity lounge, with heated chairs, dry sauna, aromatherapy steam rooms and rainfall, misting showers.

IONITHERME

Would you like to lose 3-8 inches? Speed up your metabolism, reduce fluid retention and the appearance of cellulite? Firm your muscle tone? If so, this is the best treatment for you! \$155/session

ONBOARD ACUPUNCTURE

Naturally effective for pain, arthritis, sea sickness, stress, digestion, weight loss, and much more. \$150/session or \$360/3 sessions.

PAMPER PACKAGE

Pamper Package: 50 minute full body massage, Foot & Ankle Massage, Scalp Massage & Hydrating Facial. 75 minute treatment - \$149.

REJUVENATION SPA CONSULTATIONS

Ready to enhance your natural beauty? Book your free Facial Rejuvenation consultation with our Rejuvenation Doctor at the Senses Spa.

AN 18% AUTO GRATUITY IS ADDED TO ALL SENSES SPA SERVICES.

MERCHANDISE SHOPPING



DECK 3, FORWARD

ROYAL COURT ROYAL TEA

Hear ye, hear ye! Princes and Princesses are welcomed to join some of your favorite Disney Princesses at the Royal Court Royal Tea for an afternoon filled with music, fun, and delicious goodies! Stop by the Guest Services Desk, Deck 3, Midship, to register and to learn more about this royal event. Reservations required. Age restrictions apply. Fee will apply. Limited space available.

HALLOWEEN ON THE HIGH SEAS

Celebrate Halloween on the High Seas with a spooky Halloween shirt and pin designed especially for Disney Cruise Line, available in Mickey's Mainsail. Here, you can also find various Halloween souvenirs.

BIBBIDI BOBBIDI BOUTIQUE

Fairy Godmothers-In-Training are ready with magic and pixie dust to give your Prince and Princess the transformation of a lifetime.

PANDORA JEWELRY

The Disney Parks Collection by PANDORA Jewelry inspired by some of Disney's most beloved characters. Visit White Caps on Deck 3, Forward, where you'll find a specially designed sterling silver charm featuring a Disney Cruise Line ship.

SHUTTERS PHOTO GALLERY



DECK 4, MIDSHIP

OUR CRUISE PHOTOS

View your embarkation photos starting at 7:00pm at Shutters, Deck 4, Midship and enter our raffle for a chance to win a 10 Digital Images Photo USB worth \$149.95. Raffle entries are accepted until 10:30 pm tonight.

**Terms and conditions apply.*

Visit Shutters on Deck 4, Midship for all your photographic needs, from digital cameras, batteries, binoculars and accessories.

Ask a friendly photographer about Our Cruise Photos and the incredible value of an unlimited digital photo package, which includes all of your stateroom's photos.

PROFESSIONAL PORTRAITS

Professional portraits will be available during your cruise in the Lobby Atrium, Deck 3, Midship. Please refer to your daily personal Navigator for available hours.

PHOTOBOOK

Visit Shutters today and turn your magical vacation memories into an impressive keepsake, a personal one-of-a-kind Photo Book. Fill every page with memories of your cruise vacation.

PHOTOS ARE AVAILABLE FOR VIEWING ON OUR INTERACTIVE PHOTO KIOSKS APPROXIMATELY FIVE HOURS AFTER BEING TAKEN AND ARE ONLY AVAILABLE FOR PURCHASE DURING THIS CRUISE.

IMPORTANT INFORMATION

Security Notice

All Guests (including children) who wish to disembark the ship are required to present their Key to the World card at the gangway. A photo ID is also required for those Guests who are 18 years of age or older. Guests under the age of 18 are required to have a parent, guardian or other responsible adult sign an authorization form at the Guest Service Desk if they wish to go ashore unaccompanied or with any adult from another stateroom.

Inclement Weather

For the safety of all Guests, outdoor events may be changed due to unforeseen weather conditions.

Insect Repellent Advisory

The Centers for Disease Control and Prevention recommends wearing long-sleeved shirts and pants along with insect repellent to protect against mosquito bites and related illnesses when going ashore. Complimentary insect repellent is available on the pier as you exit the ship. Insect repellent is also available for purchase in White Caps. When using both sunscreen and insect repellent, use sunscreen first and apply insect repellent on top of sunscreen.

Corridor Quiet Hours

As a courtesy to all our Guests, please recognize quiet hallway hours from 10:00 pm til 8:00 am.

Environmental Message

With Disney's commitment to the Environment, please refrain from throwing anything over the Ship's side. Thank you!

No Reserved Seats Policy

As a courtesy to all our Guests, we kindly advise that the saving of seats is not permitted in the Walt Disney Theatre, and the saving of the sun loungers is not permitted on Deck 11, 12, and 13. Items left unattended will be returned to lost and found at Guest Services, Deck 3 Midship.

Cold and Flu Reminder

Please wash hands frequently and thoroughly, particularly before meals. Contact the Health Center by dialing 7-1927, should anyone in your party become ill.

Smoking

For the comfort of our Guests, the following areas are designated as smoking areas:

*Deck 13, forward, port side by Currents
*Deck 12, aft, port side outdoor area that is accessible through the Meridian Lounge

*Deck 4, aft, port side from 6:00 pm to 6:00 am only (all of Deck 4 is non-smoking from 6:00 am to 6:00 pm)
Smoking is prohibited inside all Guest staterooms and on stateroom verandahs. Guests found smoking in their staterooms or on their verandahs will be charged a \$250 stateroom recovery fee. Electronic cigarettes may only be used in designated smoking areas.

Walt Disney Theatre

Theatrical performances may use artificial fog, strobe lights, pyrotechnics and other special effects. For the safety of our performers and the comfort of those around you, the use of any photography, video recording device or any electronic equipment is prohibited.

Verandah Safety

Please do not leave any personal items on your verandah that may be blown overboard or present a fire hazard if left unattended. Guests should not sit, lean or climb on the railing or leave children unattended on the verandah. Do not open the verandah and stateroom doors simultaneously as this may create a wind effect and could cause the doors to slam unexpectedly.

ADULT ACTIVITY HIGHLIGHTS



1820 SOCIETY (GUESTS 18-20 YEARS ONLY)

1820 Society is an exclusive option for young adult guests. Come meet fellow passengers and learn about the excellent activities that the Dream offers to create the perfect cruise experience.



80'S MUSIC CHALLENGE

"Moon Walk" back to the 80's as we put your musical knowledge of the decade to the test.

CRUISIN' SOLO GATHERING

Single, single parent or just traveling alone? Join your Cruise Staff for an informal gathering.



HALLOWEEN ISN'T JUST FOR KIDS

The trendy dance club for adults becomes the hangout for the dark side of Disney. With dramatic lighting cues, and amazing hit music, adult Guests are encouraged to flaunt their wild side and dress up. Trick or Treat isn't just for Kids.



KRAZY KARAOKE

Take to the stage, grab a microphone and sing your favorite tunes with your Club Host and DJ.



MAKING OF THE DREAM

Explore the origins of Disney Cruise Line and the latest and greatest innovations conjured especially for the Disney Dream in this fascinating and entertaining behind-the-scenes program.



MATCH YOUR MATE

It's time to play everyone's favorite couples game show, Match Your Mate!



Senses Spa & Salon has a variety of seminars and fitness classes available throughout the cruise. Pamper yourself with therapeutic spa treatments of heat, steam, rain and water in luxurious and tranquil private rooms. Deck 11, Forward.

BEVERAGE SEMINARS

Your Beverage team has a host of tastings and seminars to entertain and educate you. Stop by Guest Services Deck 3, Midship to pre-book these experiences. (nominal fee applies).

Whiskey Tasting - Stem to Stern Wine Tasting - Martini Tasting
Cognac Tasting - Tequila & Margarita Tasting - Mixology

COSTUME INFORMATION

All Guests are encouraged to dress up in their own costumes for special Halloween on the High Seas voyages, Star Wars Day at Sea celebrations and Pirate Night; however, the following guidelines should be followed when selecting a costume:

- Masks that completely cover a person's face may only be worn when standing still at character photo locations and must be carried when moving around the ship.
- Guests should choose costumes that are family friendly, not obstructive, objectionable, offensive nor violent.
- Guests may dress as their favorite character, but may not pose for pictures or sign autographs.
- To avoid any disappointment or delay in the boarding process, Guests should refrain from bringing toys or props that resemble guns, knives or other related implements, as these items will not be allowed onboard.
- Masks are strictly prohibited during the boarding process as identity must be verified.
- Guests failing to comply with costume guidelines onboard may be removed from events unless their costume can be modified.

FUN FOR ALL AGES HIGHLIGHTS



A PIRATES LIFE FOR ME

Calling all Pirates, we be! If ye have an adventurous spirit or pirate savvy, come spin the "Wheel of Destiny" fer a treasure trove of fun be ripe for the takin' in this action packed pirate game show.



BUCCANEER BLAST FIREWORKS

What's a pirate party without some fireworks to remind the other ships who be ruling the oceans blue? (Weather Permitting)



CASTAWAY CAY 5K (10+)

Sign up today for the Castaway Cay 5K! Please visit the Port Adventures Desk or the Guest Services Desk to register at anytime prior to our arrival at Disney Castaway Cay. Please note that runners must be 10 years of age or older to participate.



DISNEY JUNIOR PIRATE & PRINCESS DANCE PARTY

Calling all Pirates and Princesses! Come join us for a family dance party featuring music and fun activities from Jake & the Neverland Pirates and Sofia the First. Whether you favor tiaras or treasure chests, there's something for you at our Disney Junior Pirate & Princess Dance Party!



DISNEY VACATION CLUB GROUP PREVIEW

Want to learn more about taking magical vacations year after year? Please see a Disney Vacation Club Cast Member on Deck 4, Midship, or call 7-2805 from your stateroom phone for more information about our interactive group presentation.



FAMILY FUSION

Bring the entire family and test your Disney knowledge in the high-tech interactive game show, Family Fusion.



HAUNTED STORIES OF THE SEA

The Halloween tradition of telling ghostly tales; featuring frightening visuals, creepy sounds and spooky effects, our Sea Captain will share stories of the strange, the bizarre and the just plain scary that will leave even the bravest of souls with a chill.



JACKPOT BINGO

CASH prizes and raffle prizes to be won in our family friendly Bingo sessions with your Cruise Staff. Those under the age of 18 must be accompanied by an adult to play.



MICKEY'S MOUSEQUERADE PARTY

Enjoy a fun trick or treat "Mouse-Querade" featuring music, games, and of course treats. And expect a visit from some of your favorite Disney Pals who arrive just in time for the party, dressed in their Halloween costumes.



MICKEY'S PIRATES IN THE CARIBBEAN

It's a Pirate Celebration, me hearties! Come experience all the pirate fun alongside Captain Mickey Mouse and his famous pirate crew. Play, dance and acquire all the pirate skills needed to become an official member of Mickey's Pirate Crew! (Weather Permitting)



THE PUMPKIN TREE

Do you know why we celebrate Halloween? Or why we carve jack-o-lanterns? Join the Caretaker at the Pumpkin Tree, and hear some fun stories and customs of Halloween. Also make sure to bring your pumpkin seed with you, we promise a ghostly good time.



SALUDOS AMIGOS FIESTA

Come see what Donald and his friends are up to this time. Bring the family out to this interactive dance party featuring fun Latin music! Your family will learn to salsa, merengue and just have a Latin good time!



SO YOU THINK YOU KNOW YOUR FAMILY?

This fun-filled family game show is always full of surprises. Find out how well you know, or don't know your family!



TIM BURTON'S THE NIGHTMARE BEFORE CHRISTMAS SING AND SCREAM

You're invited to a special presentation of Tim Burton's popular classic, presented in 3-D. Featuring state-of-the-art projection, sound and in-theatre effects, you become part of the experience. You never know who may show up.

YOUTH ACTIVITIES INFO & HIGHLIGHTS



Dine & Play

A convenience for families dining at 8:15 pm, our Youth Activities counselors will be available at 9:15 pm at the entrance of Royal Palace, Enchanted Garden and Animator's Palate dining rooms to bring registered children to join the fun in the Youth Activities areas.

Pre-School Fun

Disney's Oceaneer Club is reserved for only those between 3-5 years of age.

This is a time for them to become acclimated to Disney's Oceaneer Club, make new friends and join in on a lot of fun-filled programs and activities.

Please note after Pre-School Fun has concluded, Disney's Oceaneer Club will be open for Secured Programming for ages 3-12.

Youth Activities Open House

Open House is an opportunity for all to come and participate in a variety of exciting activities and free time in the Oceaneer Club, Oceaneer Lab, Edge and Vibe throughout the cruise. During these times secured programming will still be offered in the other venue for those looking to check their children into care.

Youth Activities Venue Tour

Come and take a tour of Disney's Oceaneer Club and Disney's Oceaneer Lab. This informative tour will give you the information you need to know about our exciting spaces and activities offered for children ages 3-12. Please see your Personal Navigator or the Navigator App for times.



3 - 12 years old

MICKEY'S PUZZLE PLAYTIME

Come and play with Mickey & friends as they share their favorite games, puzzles and dances!

PLUTO'S PAJAMA PARTY

Bring the little ones in their pajamas but there will be anything but sleep when Pluto and friends host the ultimate slumber party!

TOY STORY BOOT CAMP

Join Corporal Green in our own version of boot camp as we learn how to have fun - The Toy Story way!

JEDI TRAINING: EXPERIENCE THE FORCE

Become one with the Force as you take your first step into a larger world.



3 - 12 years old

SUPER SLOPPY SCIENCE

Join Professor Make-O-Mess in some of the most extreme experiments you will ever see in the world of Super Sloppy Science!

PISTON CUP

It's Dinoco time and you're part of the pit crew! Design your own race car and see if you've got what it takes to end up in the winner's circle!

STITCH'S ADVENTURE SQUAD

Stitch, everyone's favorite alien, is making an appearance to share some of his mischievous games and activities.



11 - 14 years old

HEROES VS. VILLAINS

Join your favorite hero or villain team on a series of activities that will take place throughout the cruise.

THAT'S HILARIOUS

Ever wanted to show off your comedy skills? Then be a part of the cast for the crazy improv show "That's Hilarious" and put on a live show for your friends.



14 - 17 years old

A PIRATE'S LIFE FOR ME

Yo ho, yo ho, a Pirate's Life for Me! Aarrgh me mateys! Put your knowledge to the test!

HOMECOMING

Come and join your fellow teens in our very own version of "Homecoming" and dance the night away.

BUENA VISTA THEATRE

Deck 4 & 5, Midship

FEATURE MOVIES THIS VOYAGE

FRIDAY - PORT CANAVERAL

5:15 pm	PG-13	Guardians of the Galaxy Vol. 2	3D
8:15 pm	PG-13	Guardians of the Galaxy Vol. 2	3D
11:00 pm	G	Cars 3	cc Open Captioning

SATURDAY - NASSAU

11:30 am	G	Cars 3	3D
2:30 pm	PG-13	Guardians of the Galaxy Vol. 2	cc Open Captioning
5:15 pm	G	Cars 3	
8:30 pm	G	Cars 3	
11:00 pm	PG-13	Pirates of the Caribbean: Dead Men Tell No Tales	

SUNDAY - DISNEY CASTAWAY CAY

9:00 am	G	Family Movie Fun Time: Cars 3	
11:45 am	PG-13	Pirates of the Caribbean: Dead Men Tell No Tales	cc Open Captioning
2:30 pm	PG	Beauty and the Beast (2017)	
5:15 pm	PG-13	Pirates of the Caribbean: Dead Men Tell No Tales	3D
8:15 pm	PG-13	Pirates of the Caribbean: Dead Men Tell No Tales	3D
10:45 pm	PG-13	Guardians of the Galaxy Vol. 2	cc Open Captioning

Subject to change.

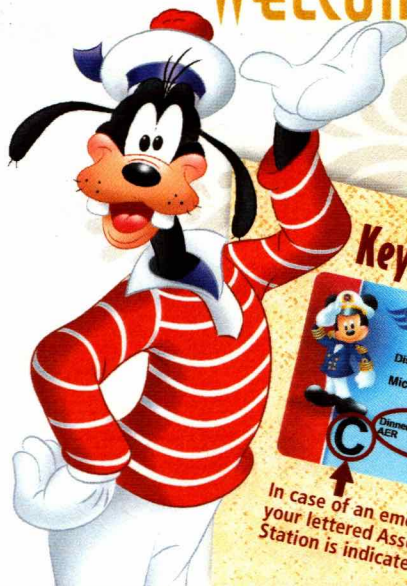
ADDITIONAL FUN AND FESTIVITIES

- Halloween Themed Events in our Youth Activity Spaces
- Select Halloween Crafts hosted by your Cruise Staff
- Halloween on the High Seas Merchandise, Deck 3, Fwd
- Halloween Popcorn Buckets available at Preludes, Deck 3 Fwd

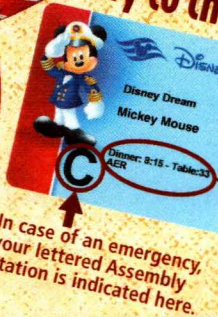
- Funnel Vision Halloween Movies including:
- Twitches
 - Halloween Town
 - The Haunted Mansion



WELCOME ABOARD!



Key to the World Card Information



In case of an emergency, your lettered Assembly Station is indicated here.

- ♥ Dinner seatings are 5:45 pm or 8:15 pm.
- ♥ Your table number for the cruise is located after your dinner seating.
- ♥ Dinner locations and rotation are indicated by letters under your dinner time.
A - Animator's Palate, Deck 3, Aft
E - Enchanted Garden, Deck 2, Midship
R - Royal Palace, Deck 3, Midship

SAILING AWAY

It's time to go Sailing Away! Join Mickey and Minnie and the rest of the gang as they welcome you aboard the Disney Dream.

Deck Stage,
Deck 11, Midship,
4:30 pm

Bahama Mama (Alcoholic)
Passion Cream Freeze (Non-Alcoholic)
DRINK OF THE DAY

Afternoon	1:45	2:00	2:15	2:30	2:45	3:00	3:15	3:30	3:45	4:00	4:15	4:30	4:45	5:00	5:15	5:30	5:45	6:00	6:15	6:30	6:45											
FUNNEL VISION	Frozen (PG) Open Captioning Funnel Vision							<div>Mandatory Guest Assembly Drill 4:00 pm</div> <div>All ship services will be suspended during this time.</div> <div>Please refer to the posted drill instructions prior to heading to your Assembly Station.</div> <div>You will not need your life jacket for the Guest Assembly Drill.</div> <div> Your Assembly Station is indicated on your Key To The World card.</div>					Sailing Away Funnel Vision					Big Hero 6 (PG) Open Captioning Funnel Vision														
BUENA VISTA THEATRE							Port Shopping Talk						Guardians of the Galaxy Vol. 2 (PG-13)							Duration: 2 Hours 16 Minutes												
CHARACTERS							Once Upon A Time Oceaneer Club						Pluto Balcony					Mickey Balcony														
																		Minnie Lobby Atrium (H)														
FUN FOR ALL AGES	Walking Ship Tour Preludes																		Deck Stage					Music with Supernova Duo Lobby Atrium		Red Carpet Arrivals		 A Timeless Tribute Walt Disney Theatre				
				Tour del Barco Preludes			Walking Ship Tour Preludes												Jewish Sabbath Outlook													
ADULTS	Acupuncture Demonstration Senses Fitness Center												Spa Raffle Senses Fitness Center																			
							Port Shopping Talk Buena Vista Theatre																									
VIBE 14-17 YEARS OLD	Youth Activities Open House											Open for Teens																				
EDGE 11-14 YEARS OLD	Youth Activities Open House											Open for Tweens																				
OCEANEER LAB 3-12 YEARS OLD	Youth Activities Open House & Registration											Bingo										GAGA Ball				Meet Your Counselors		Ice Breakers				
OCEANEER CLUB 3-12 YEARS OLD	Open House & Registration		Once Upon A Time		Venue Tour		Open House & Registration						Youth Activities Open House & Registration				Little Einstein's Adventure				Star Wars											

Disney DREAM

Evening	7:00	7:15	7:30	7:45	8:00	8:15	8:30	8:45	9:00	9:15	9:30	9:45	10:00	10:15	10:30	10:45	11:00	11:15	11:30	11:45	12:00												
FUNNEL VISION				Twitches - (TV-PG) Funnel Vision						Guardians of the Galaxy (PG-13) Open Captioning Funnel Vision																							
BUENA VISTA THEATRE						Guardians of the Galaxy Vol. 2 (PG-13)										Cars 3 (G) Open Captioning Duration: 1 Hour 49 Minutes																	
CHARACTERS	Belle <small>Lobby Atrium (V)</small>			Mickey Mouse <small>Balcony</small>			Rapunzel <small>Lobby Atrium (V)</small>						Minnie Mouse <small>Lobby Atrium (H)</small>																				
				Minnie Mouse <small>Lobby Atrium (H)</small>			Rapunzel <small>Lobby Atrium (V)</small>			Mickey Mouse <small>Balcony</small>			Tiana <small>Lobby Atrium (V)</small>																				
FUN FOR ALL AGES				\$3,000 Mega Jackpot Bingo <small>Evolution</small>																													
	Music with Supernova Duo <small>Lobby Atrium</small>			Mirror, Mirror <small>D Lounge</small>									Music with Supernova Duo <small>Lobby Atrium</small>			Piano with Silviu Constantin <small>Lobby Atrium</small>																	
ADULTS				90's Music Trivia <small>Pub 687</small>			MLB Playoffs <small>Pub 687 (Subject to Satellite Reception & Availability)</small>						Music with The Vitos <small>District Lounge</small>			1820 Society: <small>Sip it. Blend it. Taste it. Cove Cafe</small>						Cruise Staff DJ <small>District Lounge</small>											
				Piano with Silviu Constantin <small>Pink Wine and Champagne Bar</small>									Piano with Silviu <small>Pink Wine and Champagne Bar</small>																				
VIBE <small>14-17 YEARS OLD</small>	Open for Teens			GAGA Ball			Game Challenge			Craft Corner			Teen Choice			Ice Breakers			The Download			Heroes and Villains											
EDGE <small>11-14 YEARS OLD</small>	Open for Tweens			Video Game Challenge			Foosball Tournament			Game Challenge			Profiles			Taking it to The Edge			Ice Breakers			Dodgeball											
OCEANEER LAB <small>3-12 YEARS OLD</small>	Ice Breakers			Magic PlayFloor			Get the Hook						Disney Animation: Creating a Character			Pluto's Pajama Party						4 Square Competition			GAGA Ball								
OCEANEER CLUB <small>3-12 YEARS OLD</small>				Aloha Luau			Magic PlayFloor						Toy Story Boot Camp						Game Challenge			Disney Infinity Challenge						Star Wars Galaxy Designers					

YOUTH ACTIVITIES OPEN HOUSE
A non-secured program with activities for families, adults and children to enjoy together.





THE GOLDEN MICKEYS

A Timeless Tribute

WALT DISNEY THEATRE

DECK 3 & 4, FORWARD

6:15 pm & 8:30 pm

As a courtesy to all Guests, we kindly advise that the saving of seats is **not** permitted in the Walt Disney Theatre.

Assistance available at the entrance to the Walt Disney Theatre 30 minutes prior to show time.

Character Meet and Greet Ticket Distribution

Port Adventures Desk, Deck 5, Midship - 11:45 am - 2:00 pm
For Guests who did not reserve Meet and Greets online, a limited number of tickets are available today to meet some of your favorite Disney friends.

- Princess Gathering
- Frozen Meet and Greet

Tickets are required for each of these Meet and Greets.

Space is limited.

Character Appearances

PRINCESS TIANA

Balcony - 11:45 am

Lobby Atrium (V) - 10:00 pm

BELLE

Lobby Atrium (V) - 7:15 pm

RAPUNZEL

Balcony - 12:30 pm

Lobby Atrium (V)

8:00 pm & 9:30 pm

SAILING AWAY

Deck 11 Stage - 4:30 pm

PLUTO

Balcony - 5:15 pm

MINNIE MOUSE

Lobby Atrium (H)

5:30 pm, 7:30 pm & 9:45 pm

MICKY MOUSE

Balcony

5:45 pm, 7:45 pm & 9:30 pm



(H) Hallway - (S) Starboard Side - (P) Port Side - (V) Vestibule

For details of daily Disney character appearances, refer to the character line on your Navigator Grid, or the digital character board in the Lobby Atrium.

Lines close 15 minutes after advertised start time.

SHIP DIRECTORY

YOUTH ACTIVITIES

DISNEY'S OCEANEER CLUB	DECK 5, MID	5:30 PM - 12:00 AM
DISNEY'S OCEANEER LAB	DECK 5, MID	4:30 PM - 12:00 AM
EDGE	DECK 13, MID	6:00 PM - 1:00 AM
IT'S A SMALL WORLD NURSERY	DECK 5, MID	5:30 PM - 12:00 AM
VIBE	DECK 4, FWD	6:00 PM - 1:00 AM

POOLS & MORE

* Children under 12 must have adult supervision in pool areas.

AQUADUCK	DECK 12, AFT	12:00 PM - 3:00 PM
		4:30 PM - 10:00 PM
DONALD'S POOL	DECK 11, MID	12:00 PM - 3:15 PM
		6:00 PM - 10:00 PM
FUNNEL PUDDLE	DECK 12, FWD	12:00 PM - 6:00 PM
MICKEY'S POOL	DECK 11, MID	12:00 PM - 3:15 PM
		4:30 PM - 10:00 PM
MICKEY'S SLIDE	DECK 11, MID	12:00 PM - 3:15 PM
		4:30 PM - 6:00 PM
NEMO'S REEF	DECK 11, MID	12:00 PM - 3:15 PM
		4:30 PM - 6:00 PM
QUIET COVE POOL (18+)	DECK 11, FWD	12:00 PM - 11:00 PM
SATELLITE FALLS (18+)	DECK 13, FWD	12:00 PM - 9:00 PM

Please note, "selfie sticks" are not permitted in any aquatic area.

Complimentary pool vests are available for children to use in the pools onboard. Located on the pool deck.

RECREATION

GOLF/SPORTS SIMULATOR	DECK 13, AFT	12:00 PM - 3:15 PM
		4:30 PM - 6:00 PM
GOOFY GOLF	DECK 13, AFT	5:30 PM - 10:00 PM
GOOFY'S SPORTS DECK	DECK 13, AFT	12:00 PM - 6:00 PM
MIDSHIP DETECTIVE AGENCY	DECK 2 & 5, MID	12:00 PM - 11:00 PM
PORT ADVENTURES DESK	DECK 5, MID	12:00 PM - 3:30 PM
		4:30 PM - 10:00 PM
SENSES FITNESS CENTER (18+)	DECK 11, FWD	12:00 PM - 10:00 PM

GENERAL INFORMATION

BUENA VISTA THEATRE	DECK 4 & 5, MID	SHOWTIMES
CONNECT@SEA DESK	DECK 4, MID	1:00 PM - 3:30 PM
		7:00 PM - 10:00 PM
DISNEY VACATION PLANNING CENTER	DECK 4, MID	5:00 PM - 10:00 PM
GUEST SERVICES	DECK 3, MID	24 HOURS
HAIRBRAIDING	DECK 11, MID	4:30 PM - 10:00 PM
MEDICAL HEALTH CENTER	DECK 1, FWD	4:30 PM - 7:00 PM
PORT SHOPPING DESK	DECK 4, MID	7:00 PM - 9:00 PM
PRELUDES	DECK 3, FWD	5:30 PM - 9:00 PM
SENSES SPA AND SALON	DECK 11, FWD	12:00 PM - 10:00 PM
SHUTTERS PHOTO GALLERY	DECK 4, MID	7:00 PM - 10:30 PM
WALT DISNEY THEATRE	DECK 3 & 4, FWD	SHOWTIMES

SHOPPING

BIBBIDI BOBBIDI BOUTIQUE	DECK 5, MID	12:00 PM - 3:00 PM
		5:00 PM - 9:00 PM
MICKEY'S MAINSAIL	DECK 3, FWD	5:45 PM - 11:00 PM
SEA TREASURES	DECK 3, FWD	5:45 PM - 11:00 PM
VISTA GALLERY	DECK 4, MID	6:00 PM - 10:30 PM
WHITE CAPS	DECK 3, FWD	5:45 PM - 11:00 PM
WHOZITS & WHAIZITS	DECK 11, MID	12:00 PM - 3:15 PM
		4:30 PM - 6:00 PM
		9:00 PM - 11:00 PM

DUE TO PORT REGULATIONS, WHEN THE SHIP IS DOCKED, THE STORES MUST REMAIN CLOSED.

EVENING ATTIRE

Cruise Casual

WEATHER FORECAST

Today: Chance of Rain
High: 78°F/26°C

DINING & LOUNGES

LUNCH

CABANAS	DECK 11, AFT	11:45 AM - 3:00 PM
ENCHANTED GARDEN	DECK 2, MID	11:45 AM - 2:00 PM
FILMORE'S FAVORITES	DECK 11, MID	12:00 PM - 3:30 PM
		4:30 PM - 6:00 PM
LUIGI'S PIZZA	DECK 11, MID	12:00 PM - 3:30 PM
		4:30 PM - 6:00 PM
TOW MATER'S GRILL	DECK 11, MID	12:00 PM - 3:30 PM
		4:30 PM - 6:00 PM

DINNER

ANIMATOR'S PALATE	DECK 3, AFT	5:45 PM & 8:15 PM
ENCHANTED GARDEN	DECK 2, MID	5:45 PM & 8:15 PM
PALO (18+) (RESERVATIONS REQ. & NOM. FEE APPLIES)	DECK 12, AFT	6:00 PM - 8:30 PM
REMY (18+) (RESERVATIONS REQ. & NOM. FEE APPLIES)	DECK 12, AFT	6:00 PM - 8:30 PM
ROYAL PALACE	DECK 3, MID	5:45 PM & 8:15 PM
TOW MATER'S GRILL	DECK 11, MID	6:00 PM - 11:00 PM

LATE NIGHT SNACKS

LUIGI'S PIZZA	DECK 11, MID	9:30 PM - 12:00 AM
THE DISTRICT	DECK 4, AFT	10:45 PM - 11:30 PM

ADDED FEATURES

BEVERAGE STATION	DECK 11, MID	24 HOURS
EYE SCREAM	DECK 11, MID	11:45 AM - 3:30 PM
		4:30 PM - 12:00 AM
ROOM SERVICE	DIAL 0	24 HOURS
VANELLOPE'S SWEETS AND TREATS	DECK 11, AFT	11:30 AM - 3:30 PM
		4:30 PM - 10:30 PM

ENTERTAINMENT - LOUNGES - BARS

Adults must be 21 and older to consume alcoholic beverages.

BON VOYAGE	DECK 3, MID	11:30 AM - 11:00 PM
COVE BAR (18+)	DECK 11, FWD	11:30 AM - 10:30 PM
COVE CAFE (18+)	DECK 11, FWD	11:30 AM - 12:00 AM
CURRENTS (18+)	DECK 13, FWD	11:30 AM - 12:00 AM
D LOUNGE	DECK 4, MID	SHOWTIMES
DISTRICT LOUNGE (18+ AFTER 9:00 PM)	DECK 4, AFT	11:30 AM - 2:00 AM
EVOLUTION (18+ AFTER 9:00 PM)	DECK 4, AFT	9:30 PM - 12:00 AM
FROZONE TREATS	DECK 11, MID	11:30 AM - 6:00 PM
MERIDIAN (18+)	DECK 12, AFT	5:00 PM - 12:00 AM
OUTLOOK (18+)	DECK 14, MID	
PINK: WINE AND CHAMPAGNE BAR (18+)	DECK 4, AFT	5:00 PM - 12:00 AM
PUB 687 (18+ AFTER 9:00 PM)	DECK 4, AFT	11:30 AM - 12:00 AM
SENSES JUICE BAR	DECK 11, FWD	11:30 AM - 10:00 PM
SKYLINE (18+)	DECK 4, AFT	5:00 PM - 12:00 AM
VISTA CAFE	DECK 4, MID	11:30 AM - 11:00 PM
WAVES	DECK 12, AFT	11:30 AM - 6:00 PM

Public Health Advisory: Consuming raw or under-cooked meats, poultry, seafood, shellfish, or eggs may increase your risk for food borne illness, especially if you have certain medical condition.



MIDSHIP DETECTIVE AGENCY

Use your detective know-how and our special detective "badge" to search the ship and catch your criminal! Deck 2 & 5, Midship Kiosks.

Disney Cruise Line
PORT ADVENTURES

Visit the Port Adventures Desk, Deck 5, Midship, for bookings & questions.

IMPORTANT NUMBERS

Fire/Security:	7-3001
Medical Emergency:	7-3000
Health Center:	7-1927