

DISNEY CRUISE LINE

TRANSATLANTIC 2017



SEPTEMBER 16TH 2017 - SEPTEMBER 27TH 2017

STEERING COMMITTEE

CAPTAIN Marco Nogara • STAFF CAPTAIN Jason Preston • CHIEF ENGINEER Santi Ullo • HOTEL DIRECTOR Ugo Vaccalluzzo
CRUISE DIRECTOR Lesley Dallas • HUMAN RESOURCES MANAGER Dustin Worthington



BARCELONA

SATURDAY, SEPTEMBER 16TH, 2017
BARCELONA, SPAIN

17:00 - All Aboard
18:00 - Start of Voyage
Weather: W Winds, Partly Sunny
Temperature: 66°F/19°C

SUNDAY, SEPTEMBER 17TH, 2017
DAY AT SEA

Position at 12:00 Midday - LAT 37°02N, LNG 001°07W
Weather: NW Winds, Partly Cloudy
Temperature: 75°F/24°C

MONDAY, SEPTEMBER 18TH, 2017
CÁDIZ, SPAIN

08:00 - All Ashore
16:45 - All Aboard
Weather: NW Winds, Sunny
Temperature: 72°F/22°C

TUESDAY, SEPTEMBER 19TH, 2017
LISBON, PORTUGAL

08:30 - All Ashore
15:45 - All Aboard
Weather: NW Winds, Sunny
Temperature: 75°F/23°C

WEDNESDAY, SEPTEMBER 20TH, 2017
DAY AT SEA

Position at 12:00 Midday - LAT 38°04N, LNG 017°40W
Weather: N Winds, Partly Cloudy
Temperature: 72°F/22°C

THURSDAY, SEPTEMBER 21ST, 2017
PONTA DELGADA, PORTUGAL

08:15 - All Ashore
14:00 - All Aboard
Weather: NE Winds, Sunny
Temperature: 70°F/21°C

FRIDAY, SEPTEMBER 22ND, 2017
DAY AT SEA

Position at 12:00 Midday - LAT 38°17N, LNG 034°09W
Weather: SW Winds, Partly Cloudy
Temperature: 72°F/22°C

SATURDAY, SEPTEMBER 23RD 2017
DAY AT SEA

Position at 12:00 Midday - LAT 38°55N, LNG 043°30W
Weather: N Winds, Partly Cloudy
Temperature: 75°F/24°C

TOTAL MILEAGE THIS VOYAGE

| PORT | NAUTICAL MILES | AVG. SPEED |
|------|----------------|------------|
|------|----------------|------------|

| | | |
|---------------------------|------|-----------|
| Barcelona to Cádiz | 610 | 17.06 kts |
| Cádiz to Lisbon | 263 | 18.8 kts |
| Lisbon to Ponta Delgada | 783 | 19.9 kts |
| Ponta Delgada to New York | 2270 | 19.8 kts |

| | |
|----------------|------|
| TOTAL DISTANCE | 3926 |
|----------------|------|

ATLANTIC 2017 MAGIC

SUNDAY, SEPTEMBER 24TH, 2017
DAY AT SEA

Position at 12:00 Midday - LAT 39°30N, LNG 052°17W
Weather: SW Winds, Sunny
Temperature: 73°F/21°C

MONDAY, SEPTEMBER 25TH, 2017
DAY AT SEA

Position at 12:00 Midday - LAT 40°05N, LNG 061°08W
Weather: SW Winds, Partly Cloudy
Temperature: 75°F/24°C

TUESDAY, SEPTEMBER 26TH, 2017
NEW YORK, USA

All Ashore upon ship clearance
Overnight Stay
Weather: NE Winds, Partly Sunny
Temperature: 75°F/24°C

WEDNESDAY, SEPTEMBER 27TH, 2017
NEW YORK, USA

07:30 - ETA, End of Voyage



ENGINES:

5 Diesel Generators (GMT SULZER 16 cylinders)
5 x 15,600 H.P. (5x 11,520kW)
Total Power 78,000 H.P. or 57,600kW

THRUSTERS:

3 Bow Thrusters (each 1,800kW)
Total 5,400kW or 7,236 H.P.
2 Stern Thrusters (each 1,800kW)
Total 3,600kW or 4,824 H.P.

PROPULSION

Two six-bladed fixed pitch propellers, driven by 2 GE electric motors 19MW each, which is 25,850 H.P. each. Total 51,700 H.P.

FUEL CONSUMPTION

1 Generator consuming approx. 60 tons per day.

WATER CONSUMPTION

With 2 evaporators and 1 reverse osmosis plant the maximum production is 1500 tons per day. The daily water consumption is approx. 1200.

GROSS TONNAGE 84,000

LENGTH 984 Feet

WIDTH 105.8 Feet

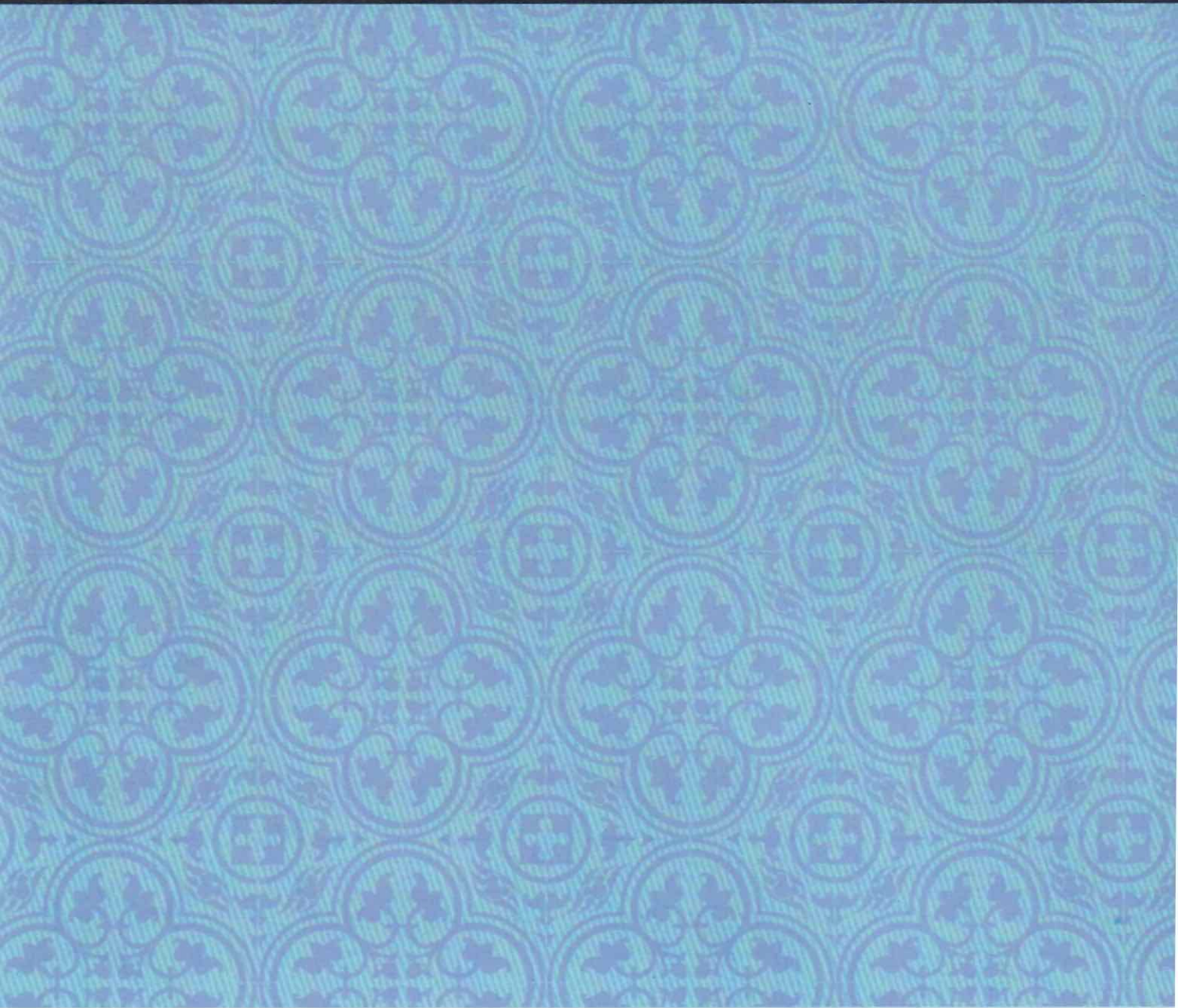
MAX SPEED 23 kts

CONSUMPTION THIS CRUISE

HFO- Heavy Fuel Oil consumption:
(1,217m3)

MGO- Marine Gas Oil consumption:
(368m3)

FW- Fresh Water consumption:
(5,385m3)



ON BEHALF OF CAPTAIN MARCO AND ALL OF THE SHIP'S OFFICERS AND CREW,
WE THANK YOU FOR SAILING WITH US ON THE DISNEY MAGIC
II-NIGHT TRANSATLANTIC CRUISE.

WE HOPE YOU HAVE ENJOYED THE EXPERIENCE
AS MUCH AS WE HAVE ENJOYED HOSTING YOU.

WE LOOK FORWARD TO WELCOMING YOU BACK ONBOARD VERY SOON!

THANK YOU