

VOYAGE NAVIGATOR



MONDAY
AUGUST 7, 2017

TO

SATURDAY
AUGUST 12, 2017

CRUISE HIGHLIGHTS

MONDAY BARCELONA

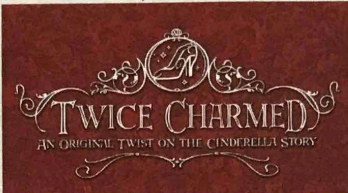
Port Departure: 5:00 pm
All Aboard: 4:00 pm
Attire: Cruise Casual



BE OUR GUEST - WELCOME ABOARD SHOW
Walt Disney Theatre
7:00 pm & 9:00 pm

TUESDAY CANNES

All Ashore: 8:00 am
Last Tender: 6:45 pm
Attire: Optional Dress Up



TWICE CHARMED
Walt Disney Theatre
7:00 pm & 9:00 pm

WEDNESDAY

LIVORNO (FLORENCE)

All Ashore: 7:00 am
All Aboard: 6:45 pm
Attire: Cruise Casual



TANGLED: THE MUSICAL
Walt Disney Theatre
7:00 pm & 9:00 pm

THURSDAY

CIVITAVECCHIA (ROME)

All Ashore: 7:00 am
All Aboard: 6:45 pm
Attire: Pirate or Cruise Casual

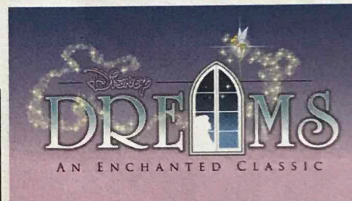


SHOWTIME: KYLE KNIGHT & MISTIE
Walt Disney Theatre
7:00 pm & 9:00 pm

FRIDAY

DAY AT SEA

Attire: Cruise Casual



DISNEY DREAMS: AN ENCHANTED CLASSIC
Walt Disney Theatre
7:00 pm & 9:00 pm

Subject to change.

WELCOME ABOARD!

YOUR STATEROOM & LUGGAGE

Staterooms will be ready at 1:30 pm. To allow your Stateroom Host/ess time to prepare your room, please do not remove the blue stanchion straps. Stateroom hosts will deliver luggage throughout the day until 5:30 pm.

STATEROOMS WITH BUNK BEDS

Bunk beds are recessed into the ceiling and will be prepared during evening turndown service by your Stateroom Host/ess.

STATEROOM SAFE

Each stateroom is equipped with a secured storage safe. Instructions for use are located on the safe.

TO CHANGE DINING ASSIGNMENT

Requests for different seating times will be taken today:

- 12:30 pm - 3:00 pm; Book in Lumière's, Deck 3, Midship or please dial 7-1831 and leave a voicemail.

PALO DINING RESERVATIONS

Reservations are required and will be taken on a first come basis today:

- 12:30 pm - 3:00 pm Lumière's, Deck 3, Midship, or please dial 7-6843 and leave a voicemail.

Adult Exclusive Dining Opportunity! Guests are invited to make 2 dinner reservations at our adult-exclusive restaurant,

Palo. This includes one reservation on embarkation evening and one more on another night of the cruise.

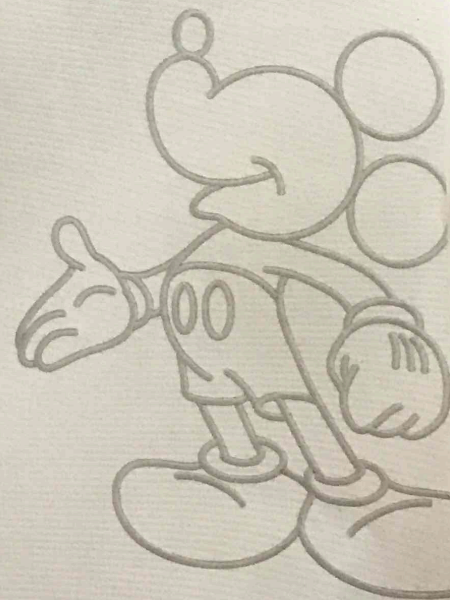
Reservations are subject to availability and a specialty dining charge will apply.

DINNER

6:00 pm - First seating 8:30 pm - Second seating

Please check your Key To The World Card for details of your dining rotation, and bring it to your specific dining location. There is no need to wait in line prior to dinner. Dining Rooms open at designated seating times and your table is reserved each night of your cruise.

A = Animator's Palate, Deck 4, Aft L = Lumière's, Deck 3, Midship C = Cariocas, Deck 3, Aft



Disney Cruise Line
PORT ADVENTURES

Create the most memorable experiences during your Disney Cruise Line vacation with Port Adventures! Our Port Adventures are designed for you to see the best of our ports have to offer. Stop by the Port Adventures Desk, Deck 3, Midship where our friendly team will be happy to assist you plan your adventure!

There is an adventure for everyone on your Disney Magic® vacation.

IMPORTANT NUMBERS

Fire/Security: 7-3001

Medical Emergency: 7-3000

Health Center: 7-1923

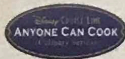
ADULT ACTIVITY HIGHLIGHTS



1820 SOCIETY (GUESTS 18-20 YEARS ONLY)
1820 Society is an exclusive option for young adult Guests. Come meet fellow passengers and learn about the excellent activities that the Disney Magic offers to create the perfect cruise experience.



80'S FLASHBACK
The 80's are back! Join your Cruise Staff team, in testing your 80's knowledge in this high energy 80's revival.



ANYONE CAN COOK
Every Chef has a specialty, and ours is no exception. Get a taste of perfection with each day's recipe.



DISNEY INNOVATIONS
Take part in our presentation on the "Top 10" innovations presented by the Walt Disney Company.



KRAZY KARAOKE
Take to the stage, grab a microphone and sing your favorite tunes with your Club Host and DJ.



MATCH YOUR MATE
It's time to play everyone's favorite couples game show, Match Your Mate!

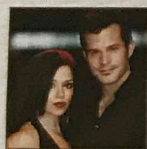


Senses Spa & Salon has a variety of seminars and fitness classes available throughout the cruise. Pamper yourself with therapeutic spa treatments of heat, steam, rain and water in luxurious and tranquil private rooms. Deck 9, Forward.

BEVERAGE SEMINARS

Your Beverage team has a host of tastings and seminars to entertain and educate you. Stop by Lumière's, Deck 3, Midship, 12:00 - 3:00 pm or Guest Services, Deck 3, Midship after today to pre-book these experiences (nominal fee applies). Seminars are only for Guests 21 and older. Guests 18 to 20, whose parent or guardian has completed a beverage consent form, may attend with their parent or guardian.

FEATURED VARIETY ACTS THIS VOYAGE



THE MAGIC & ILLUSION OF KYLE KNIGHT & MISTIE
Las Vegas based illusionists, Kyle Knight and Mistie, surprise their audience with a different approach to magic as they reveal guarded secrets, perform impossible feats while being totally surrounded, and allow their audience to get up close and involved in ways they've never seen before.



THE MUSIC & COMEDY OF JOHN CHARLES
With just his guitar, and his incredible singing voice, John Charles amazes his audience with his ability to combine music, comedy and audience interaction. No two shows are ever alike!



THE MUSIC OF JUST JOHN & PAUL
Two brothers, Glen & Dean, are passionate about The Beatles. In the music business for over 20 years and performing in Beatle Tributes since 1995, they are the longest running "Lennon and McCartney" tribute! This isn't merely an impersonation....it's the feel of The Beatles!

FUN FOR ALL AGES HIGHLIGHTS



ADVENTURES AWAY
Earn your status as V.I.P. sailors as your Cruise Director, your Disney Pals, and the Cruise Staff officially begin your "Adventures Away".



A PIRATE'S LIFE FOR ME
Calling all Pirates, we be! If ye have an adventurous spirit or pirate savvy, come spin the "Wheel of Destiny" for a treasure trove of fun be ripe for the takin' in this action packed pirate game show.



CLUB NEW YEAR'S EVE
Club New Year's Eve, you won't want to miss this journey of musical genres throughout history and performances by some of your favorite Cruise Staff. Bring your family and help us count down to a brand new year!



DISNEY JUNIOR PIRATE & PRINCESS DANCE PARTY
Calling all Pirates and Princesses! Come join us for a family dance party featuring music and fun activities from Jake & the Neverland Pirates and Sofia the First. Whether you favor tiaras or treasure chests, there's something for you at our Disney Junior Pirate & Princess Dance Party!



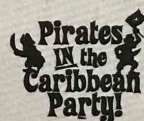
DISNEY VACATION CLUB GROUP PREVIEW
Want to learn more about taking magical vacations year after year? Please see a Disney Vacation Club representative on Deck 4, Midship, or call 7-2805 from your stateroom phone for more information about our interactive group presentation.



JACK-JACK'S INCREDIBLE DIAPER DASH
Calling all baby cruisers! It's time to take to the mat to see who's the fastest crawler of the seven seas! Register your baby 15 minutes prior to the big race.



JACKPOT BINGO
CASH prizes and raffle prizes to be won in our family friendly Bingo sessions with your Cruise Staff. Those under the age of 18 must be accompanied by an adult to play.



PIRATES IN THE CARIBBEAN DECK PARTY
Iyer Disney Friends are all set for a swashbucklin' good time! It's a Pirate Celebration, me hearties! Hoist yourself to Deck 9 to enjoy a rowdy buccaneer bash we call Pirates IN the Caribbean Deck Party. (Weather Permitting)



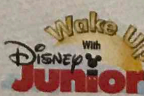
SALUDOS AMIGOS FIESTA
Come see what Donald and his friends are up to this time. Bring the family out to this interactive dance party featuring fun Latin music! Your family will learn to salsa, merengue and just have a Latin good time!



SO YOU THINK YOU KNOW YOUR FAMILY?
This fun-filled family game show is always full of surprises. Find out how well you know, or don't know your family!



'TIL WE MEET AGAIN
The world-famous Disney Characters and some of your new friends from the Disney Magic stage shows bid you a charming farewell.



WAKE UP WITH DISNEY JUNIOR
What happens when you experience unlimited fun with your favorite Disney Junior shows? You get an exciting dance party designed especially for preschoolers ages seven and under.



WHO WANTS TO BE A MOUSEKETEER?
Your chance to get into the "hot seat" and win limited edition prizes. Or, play along as part of our live studio audience.

YOUTH ACTIVITIES INFO & HIGHLIGHTS



Dine & Play

As a convenience for families dining at 8:30 pm, our Youth Activities Counselors will be available at 9:30 pm at the entrance of Lumiere's and Carioca's and at 9:45 pm at the entrance of Animator's Palate to bring registered children to join the fun in Disney's Oceaneer Club and Disney's Oceaneer Lab.

Pre-School Fun

Disney's Oceaneer Club is reserved for only those between 3-5 years of age. This is a time for them to become acclimated to Disney's Oceaneer Club, make new friends and join in on a lot of fun-filled programs and activities. Please note after Pre-School Fun has concluded, Disney's Oceaneer Club will be open for Secured Programming for ages 3-12.

Youth Activities Open House

Open House is an opportunity for all to come and participate in a variety of exciting activities and free time in the Oceaneer Club, Oceaneer Lab, Edge and Vibe throughout the cruise. During these times secured programming will still be offered in the other venue for those looking to check their children into care.



3 - 12 years old

BECOME IRON MAN!

Do you want to be Iron Man? Marvel's Avengers Academy invites you to virtually suit up in Iron Man's armor for an exciting interactive training gauntlet.

MICKEY'S PUZZLE PLAYTIME

Come and play with Mickey & friends as they share their favorite games, puzzles and dances!

TOY STORY BOOT CAMP

Join Corporal Green in our own version of boot camp as we learn how to have fun - The Toy Story way!



3 - 12 years old

SUPER SLOPPY SCIENCE

Join Professor Make-O-Mess in some of the most extreme experiments you will ever see in the world of Super Sloppy Science!

ANYONE CAN COOK

From our galley to yours. Join our chefs as they show you how to prepare delicious dishes.

PISTON CUP

It's Dinoco time and you're part of the pit crew! Design your own race car and see if you've got what it takes to end up in the winner's circle!



11 - 14 years old

HEROES VS. VILLAINS

Join your favorite hero or villain team on a series of activities that will take place throughout the cruise.

THAT'S HILARIOUS

Ever wanted to show off your comedy skills? Then be a part of the cast for the crazy improv show "That's Hilarious" and put on a live show for your friends.



14 - 17 years old

A PIRATE'S LIFE FOR ME

Yo ho, yo ho, a Pirate's Life for Me! Aarrgh me mateys! Put your knowledge to the test!

HOMECOMING

Come and join your fellow teens in our very own version of "Homecoming" and dance the night away.

BUENA VISTA THEATRE

Deck 5, Midship

FEATURE MOVIES THIS VOYAGE

MONDAY - BARCELONA

5:30 pm	G	Cars 3	3D Open Captioning
8:15 pm	G	Cars 3	
10:30 pm	PG	Beauty and the Beast (2017)	

TUESDAY - CANNES

11:00 am	PG-13	POTC: Dead Men Tell No Tales	3D Open Captioning
2:00 pm	PG	Moana	3D Open Captioning
5:15 pm	PG-13	Spider-Man: Homecoming	3D Open Captioning
8:00 pm	PG-13	Spider-Man: Homecoming	3D Open Captioning
10:45 pm	PG-13	Guardians of the Galaxy	3D Open Captioning

WEDNESDAY - LIVORNO

8:30 am	PG	Moana	3D Open Captioning
11:00 am	G	Cars 3	3D Open Captioning
1:45 pm	PG-13	Guardians of the Galaxy Vol. 2	3D Open Captioning
5:15 pm	PG	Beauty and the Beast (2017)	3D Open Captioning
8:00 pm	PG	Beauty and the Beast (2017)	3D Open Captioning
11:00 pm	PG-13	Spider-Man: Homecoming	3D Open Captioning

THURSDAY - CIVITAVECCHIA

8:30 am	PG	Beauty and the Beast (2017)	3D Open Captioning
11:15 am	PG	Moana	3D Open Captioning
2:00 pm	PG-13	Spider-Man: Homecoming	3D Open Captioning
5:15 pm	PG-13	POTC: Dead Men Tell No Tales	3D Open Captioning
8:00 pm	PG-13	POTC: Dead Men Tell No Tales	3D Open Captioning
11:00 pm	G	Cars 3	3D Open Captioning

FRIDAY - DAY AT SEA

8:30 am	G	Family Movie Fun Time: Cars 3	3D Open Captioning
11:00 am	PG	Beauty and the Beast (2017)	3D Open Captioning
2:00 pm	G	Cars 3	3D Open Captioning
4:45 pm	PG-13	Guardians of the Galaxy Vol. 2	3D Open Captioning
7:45 pm	PG-13	Guardians of the Galaxy Vol. 2	3D Open Captioning
11:00 pm	PG-13	POTC: Dead Men Tell No Tales	3D Open Captioning

Subject to change.

MORE TO ENJOY ONBOARD

NEW FALL 2018 ITINERARIES

New Fall 2018 Itineraries announced! Set sail for spectacular ports including first time sailing to Bermuda and Quebec City, Canada. Disney Cruise Line will continue sailing to sun-soaked destinations including Bahamian, Caribbean and even Baja cruises! Visit the Disney Vacation Planning desk, Deck 4, Midship for more information. Disney Vacation Planning tends to get busy on the last day of sailing. Don't miss the opportunity to plan your next Disney vacation.

DISNEY VACATION CLUB® MEMBERS CELEBRATION

Members! Mix and mingle with other Members and learn how you can enhance your Membership! Please see a Disney Vacation Club Cast Member on Deck 4, Midship, or call 7-2805 from your stateroom phone for more information.

PORT SHOPPING INFORMATION

Meet Gemma, your Port Shopping Guide, for hints, tips and know how when it comes to shopping ashore this cruise! Gemma has great recommendations for the whole family and will show you how to maximize your time in our ports of call with money saving tips! Visit Gemma at the Port Shopping Desk, Deck 3, Midship between 7:30 pm & 8:30 pm tonight for a free gift.

Connect@Sea

We are now offering a NEW and improved Internet service to stay connected on your cruise like no other in the industry! Internet packages range from \$0.30 per MB - \$110.00 (1000 MB package). For more information contact your Connect@Sea Expert or Guest Services onboard. Possible service interruptions due to area configuration.

CURRENCY EXCHANGE

Euros will be available for exchange at Guest Services, Deck 3, Midship, 24 hrs a day. Not all currencies will be exchanged onboard, so please check with Guest Services for further information.

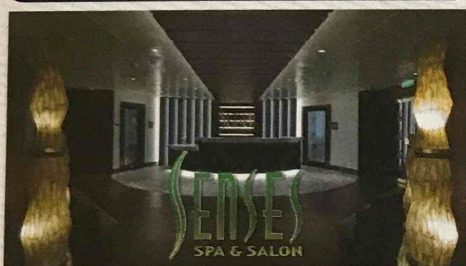
RELIGIOUS SERVICES

Groups who need a location to practice their faith may contact Guest Services for availability information.

TRANSPORTATION INFORMATION

Should you wish to purchase transportation to the Barcelona airport, kindly proceed to Guest Services on Deck 3, Midship for further assistance.

SENSES SPA & SALON



DECK 9, FORWARD Extension 7-1465

RAINFOREST

Come enjoy our serenity lounge, with heated chairs, dry sauna, aromatherapy steam rooms and rainfall, misting showers.

Couples Cruise Pass - \$169 ~ Single Cruise Pass - \$114

IONITHERMIE

Lose between 1 - 8 inches? Speed up your metabolism. Firm muscle tone. Improve appearance of cellulite. \$155/1 session or \$497/5 sessions.

ONBOARD ACUPUNCTURE

Naturally effective for pain, arthritis, sea sickness, stress, digestion, weight loss, and much more.

\$150/session or \$550/5 sessions.

ELEMIS BIOTEC

8 different Facial treatments available based on your specific concerns or needs. Technology turbo charges the concept of touch. The clinically proven result is visibly healthy, nourished and energized skin.

REJUVENATION SPA CONSULTATIONS

Ready to enhance your natural beauty? Book your free Facial Rejuvenation consultation with our Rejuvenation Doctor at the Senses Spa.

MERCHANDISE SHOPPING



DECK 4, FORWARD

MEDITERRANEAN MERCHANDISE FOR THE FAMILY

Step into White Caps, Deck 4, Forward, today to find an array of specially designed merchandise for the Disney Magic's Mediterranean itineraries. From tees to a magnet and ornament, you're sure to find something to delight the whole family!

HELPFUL SHOPPING TIP

While shopping onboard, you may collect your items from both stores before proceeding to checkout at any register. No need to have to wait in line in each store to pay for your items separately! Mickey's Mainsail and White Caps, Deck 4, Forward.

VISTA GALLERY - MORE TO ENJOY WHILE ONBOARD

Welcome onboard, take a minute to stroll through the Vista Gallery on Deck 4, Midship and discover special themed Disney artwork. Find a selection of fine art, giclees, lithographs, and original Disney art.

MARVEL SUPERHERO MERCHANDISE

Stop by Sea Treasures, Deck 3, Forward and discover exciting merchandise of some of your favorite Marvel Superheroes!

SHUTTERS PHOTO GALLERY



DECK 4, AFT

OUR CRUISE PHOTOS DIGITAL!

Your embarkation photos will be available for viewing at 6:30 pm. Visit Shutter's, Deck 4, Aft, and drop your raffle coupon for a chance to win a 10 Digital Photo Package, with a \$149.95 value.

*Terms and conditions apply.

Visit Shutter's on Deck 4, Aft for more information.

FORMAL PORTRAITS

Formal portraits will be available tomorrow in the Lobby Atrium, Deck 3, Midship from 5:15pm - 6:15pm, 7:30pm - 8:45pm & 9:45pm - 10:30pm

PHOTO BOOK

Turn your magical vacation memories into an impressive keepsake, a personal one of a kind Photo Book. Fill every page with memories of your cruise vacation. Orders close at 9:00 pm on the last day of the cruise.

PHOTOS ARE AVAILABLE FOR VIEWING ON OUR INTERACTIVE PHOTO KIOSKS APPROXIMATELY FIVE HOURS AFTER BEING TAKEN AND ARE ONLY AVAILABLE FOR PURCHASE DURING THIS CRUISE.

AN 18% AUTO GRATUITY IS ADDED TO ALL SENSES SPA SERVICES.

DUE TO PORT REGULATIONS, WHEN THE SHIP IS DOCKED, THE STORES WILL REMAIN CLOSED.

IMPORTANT INFORMATION

Security Notice

All Guests (including children) who wish to disembark the ship are required to present their Key to the World card at the gangway. A photo ID is also required for those Guests who are 18 years of age or older. Guests under the age of 18 are required to have a parent, guardian or other responsible adult sign an authorization form at the Guest Service Desk if they wish to go ashore unaccompanied or with any adult from another stateroom.

Inclement Weather

For the safety of all Guests, outdoor events may be changed due to unforeseen weather conditions.

Insect Repellent Advisory

The Centers for Disease Control and Prevention recommends wearing long-sleeved shirts and pants along with insect repellent to protect against mosquito bites and related illnesses when going ashore. Complimentary insect repellent is available on the pier as you exit the ship. Insect repellent is also available for purchase in White Caps. When using both sunscreen and insect repellent, use sunscreen first and apply insect repellent on top of sunscreen.

Corridor Quiet Hours

As a courtesy to all our Guests, please recognize quiet hallway hours from 10:00 pm till 8:00 am.

Environmental Message

With Disney's commitment to the Environment, please refrain from throwing anything over the Ship's side. Thank you!

No Reserved Seats Policy

As a courtesy to all our Guests, we kindly advise that the saving of seats is not permitted in the Walt Disney Theatre, and the saving of the sun loungers is not permitted on Deck 9 and 10. Items left unattended will be returned to lost and found at Guest Services, Deck 3 Midship.

Verandah Safety

Please do not leave any combustible materials on your balcony when not present in your stateroom for safety reasons.

Smoking

For the comfort of our Guests, the following areas are designated as smoking areas:

*Deck 9, Forward, Port Side by

*Deck 4, aft, port side from 6:00 pm to

6:00 am only (all of Deck 4 is non-

smoking from 6:00 am to 6:00 pm)

Smoking is prohibited inside all Guest staterooms and on stateroom verandahs. Guests found smoking in their staterooms or on their verandahs will be charged a \$250 stateroom recovery fee. Electronic cigarettes may only be used in designated smoking areas.

Walt Disney Theatre

Theatrical performances may use artificial fog, strobe lights, pyrotechnics and other special effects. For the safety of our performers and the comfort of those around you, the use of any photography, video recording device or any electronic equipment is prohibited.

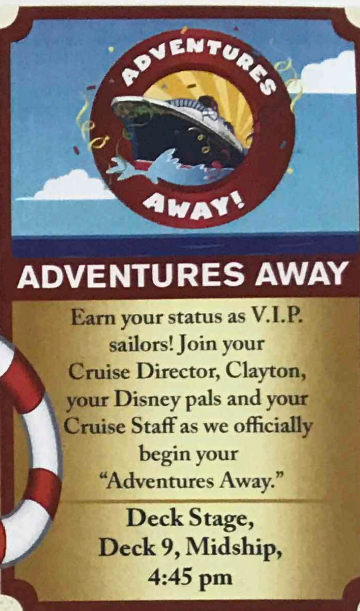
Cold and Flu Reminder

Please wash hands frequently and thoroughly; particularly before meals. Contact the Health Center by dialing 7-1923, should anyone in your party become ill.




In case of an emergency,
your lettered Assembly
Station is indicated here.

- ♥ Your dining time and table number for the cruise are located here.
- ♥ Dining locations and rotation are indicated by letters under your dinner time.
 - L - Lumiere's, Deck 3, Midship
 - A - Animator's Palate, Deck 4, Aft
 - C - Carioca's, Deck 3, Aft



DRINK
OF THE DAY

Afternoon	1:45	2:00	2:15	2:30	2:45	3:00	3:15	3:30	3:45	4:00	4:15	4:30	4:45	5:00	5:15	5:30	5:45	6:00	6:15	6:30	6:45
FUNNEL VISION	Esencia Dancers Deck 9 Stage		Poolside Jams with Cruise Staff DJ Deck 9 Stage		Esencia Dancers Deck 9 Stage				<div><h3>Mandatory Guest Assembly Drill 4:15 pm</h3><p>(All Guests must attend)</p><p>All ship services will be suspended during this time.</p><p>Refer to the posted drill instructions on the back of your stateroom door prior to heading to Deck 4. Please bring your Key to the World Card.</p><p>You will not need your life jacket for the Guest Assembly Drill.</p><div><p>Disney Cruise Line Key to the World Card Mickey Mouse M</p></div></div>												



Evening	7:00	7:15	7:30	7:45	8:00	8:15	8:30	8:45	9:00	9:15	9:30	9:45	10:00	10:15	10:30	10:45	11:00	11:15	11:30	11:45	12:00
FUNNEL VISION						Ratatouille (G) Open Captioning Funnel Vision								Enchanted (PG) Open Captioning Funnel Vision							
BUENA VISTA THEATRE						Cars 3 (G) Open Captioning Duration: 1 Hour 49 Minutes								Beauty and the Beast (2017) (PG) Duration: 2 Hours 9 Minutes							
CHARACTERS				Minnie DK4 Mid (S)									Goofy Lobby Atrium (P)		Pluto Lobby Atrium (P)	Mickey DK4 Mid (S)					
						Mickey DK4 Mid (S)								Minnie DK4 Mid (S)							
FUN FOR ALL AGES					Bingo Pre-Sales D Lounge												D Lounge				
					Live Music with the FireLites Promenade Lounge																
					Disney Vacation Club Members Celebration D Lounge								Live Music with Supernova Duo Lobby Atrium				Ed Kelly LIVE Lobby Atrium				
ADULTS					Ed Kelly LIVE Keys		Team Trivia O'Gills Pub						1820 Society Cove Cafe	Intuition Fathoms			The Music and Comedy of JOHN CHARLES Fathoms		Cruise Staff DJ Fathoms		Late Night Piano Keys
						Music & Martinis with Tim Moss Keys					UK Songbook with Tim Moss Keys										
VIBE 14-17 YEARS OLD	Open for Teens		Cards Tournament			Wii Challenge		Profiles					Ice Breakers				The Download		Heroes and Villains		
EDGE 11-14 YEARS OLD	Open for Tweens		Wii Challenge				GAGA Ball		Profiles					Taking it to The Edge		Ice Breakers			Heroes and Villains		
OCEANEER LAB 3-12 YEARS OLD	Meet Your Characters	Capture the Flag		Super Sloppy Science				Ice Breakers					GAGA Ball		Monstropolis Most Wanted			Scavenger Hunt			
OCEANEER CLUB 3-12 YEARS OLD	Welcome Party			Toy Story Boot Camp			Four Square		Magic Show				Memory Wall		Heffalump Hunting			Become Iron Man!		Open House	

Fold along the dotted lines and take me with you
so you don't miss any of the fun!

—▲— FOLD

YOUTH ACTIVITIES OPEN HOUSE
A non-secured program with activities for families, adults and children to enjoy together.

MONDAY, AUGUST 7, 2017 - BARCELONA, SPAIN



Be our Guest!

WELCOME ABOARD SHOW

WALT DISNEY THEATRE

Deck 4, Forward
7:00 pm & 9:00 pm

As a courtesy to all Guests, we kindly advise that the saving of seats is not permitted in the Walt Disney Theatre.

Assistance is available at the entrance to the Walt Disney Theatre 30 minutes prior to show time.

Character Meet & Greet Ticket Distribution

Port Adventures Desk, Deck 3, Midship - 12:00 pm - 3:00 pm

For Guests who did not reserve meet and greets online, a limited number of tickets are available today to meet some of your favorite Disney friends.

Princess Gathering ~ Frozen Gathering

Tickets are required for each of these meet and greets.
Space is limited.

Character Appearances

CINDERELLA

DK4 Mid (S) - 12:00 pm

PLUTO

Lobby Atrium (P) - 10:30 pm

BELLE

DK4 Mid (S) - 12:45 pm

ADVENTURES AWAY

Deck 9 Stage - 4:45 pm

GOOFY

DK4 Mid (S) - 5:45 pm
Lobby Atrium (P) - 10:00 pm

MICKY MOUSE

DK4 Mid (S) - 6:15 pm,
8:15 pm & 10:45 pm

MINNIE MOUSE

DK4 Mid (S)
7:45 pm & 10:15 pm



(P) - Port Side, (S) Starboard Side

For details of daily Disney character appearances, refer to the character line on your Navigator Grid, or the digital character board in the Lobby Atrium.

SHIP DIRECTORY

YOUTH ACTIVITIES

DISNEY'S OCEANEER CLUB	DECK 5, MID	12:30 PM - 3:45 PM
		4:45 PM - 12:00 AM
DISNEY'S OCEANEER LAB	DECK 5, MID	12:30 PM - 3:45 PM
		4:45 PM - 12:00 AM
EDGE	DECK 9, MID	12:30 PM - 3:45 PM
		4:45 PM - 12:00 AM
IT'S A SMALL WORLD NURSERY	DECK 5, AFT	12:30 PM - 3:45 PM
		4:45 PM - 11:30 PM
VIBE	DECK 10, MID	12:30 PM - 3:45 PM
		4:45 PM - 12:00 AM

POOLS

*Children under 12 years of age must have adult supervision in all pools.

AQUADUNK	DECK 10, MID	12:00 PM - 3:00 PM
		6:00 PM - 8:00 PM
AQUALAB	DECK 9, AFT	12:00 PM - 3:30 PM
		4:30 PM - 8:00 PM
GOOFY'S POOL	DECK 9, MID	12:00 PM - 3:30 PM
		6:00 PM - 10:00 PM
NEPHEWS' SPLASH ZONE	DECK 9, AFT	12:00 PM - 3:30 PM
		4:30 PM - 6:00 PM
QUIET COVE POOL (18+)	DECK 9, FWD	12:00 PM - 11:00 PM
Twist 'n' Spout	DECK 9, AFT	12:00 PM - 3:00 PM
		4:30 PM - 8:00 PM

Please note, "selfie sticks" are not permitted in the pools or on the slides.
Complimentary pool vests are available for children to use in the pools onboard.
They are located on the pool deck.

RECREATION

PORT ADVENTURES DESK	DECK 3, MID	12:00 PM - 3:30 PM
		4:30 PM - 9:00 PM
SENSES FITNESS CENTER (18+)	DECK 9, FWD	11:30 AM - 10:00 PM
WIDE WORLD OF SPORTS DECK	DECK 10, FWD	24 HOURS

GENERAL INFORMATION

BUENA VISTA THEATRE	DECK 5, AFT	SHOWTIMES
CONNECT@SEA DESK	DECK 3, AFT	1:00 PM - 3:30 PM
		7:00 PM - 10:00 PM
DISNEY VACATION CLUB DESK	DECK 4, MID	5:00 PM - 10:00 PM
DISNEY VACATION PLANNING	DECK 4, MID	7:30 PM - 8:30 PM
FUNNEL VISION	DECK 9, MID	SHOWTIMES
GUEST SERVICES	DECK 3, MID	24 HOURS
HAIR BRAIDING	DECK 9, MID	6:00 PM - 8:00 PM
MEDICAL HEALTH CENTER	DECK 1, FWD	4:30 PM - 7:00 PM
PORT SHOPPING DESK	DECK 3, MID	7:30 PM - 8:30 PM
PRELUDES	DECK 4, FWD	5:30 PM - 9:00 PM
SENSES SPA AND SALON	DECK 9, FWD	11:30 AM - 10:00 PM
SHUTTERS PHOTO GALLERY	DECK 4, AFT	6:00 PM - 10:30 PM
WALT DISNEY THEATRE	DECK 4, FWD	SHOWTIMES

SHOPPING

BIBBIDI BOBBIDI BOUTIQUE	DECK 10, FWD	12:00 PM - 3:00 PM
		5:00 PM - 9:00 PM
MICKY'S MAINSAIL	DECK 4, FWD	6:00 PM - 11:00 PM
QUACKS	DECK 9, MID	
SEA TREASURES	DECK 3, FWD	6:00 PM - 11:00 PM
VISTA GALLERY	DECK 4, MID	6:00 PM - 11:00 PM
WHITE CAPS	DECK 4, FWD	6:00 PM - 11:00 PM

DUE TO PORT REGULATIONS, WHEN THE SHIP IS DOCKED, THE STORES MUST REMAIN CLOSED.

EVENING ATTIRE Cruise Casual

WEATHER Today: Partly Sunny
FORECAST High: 84°F/29°C

DINING & LOUNGES

LUNCH

CABANAS	DECK 9, AFT	11:45 AM - 3:15 PM
CARIOCA'S	DECK 3, AFT	11:45 AM - 1:45 PM
DAISY'S DE LITES	DECK 9, AFT	12:00 PM - 3:30 PM
		4:15 PM - 6:00 PM
PETE'S BOILER BITES	DECK 9, AFT	12:00 PM - 3:30 PM
		4:15 PM - 6:00 PM
PINOCCHIO'S PIZZERIA	DECK 9, MID	12:00 PM - 3:30 PM
		4:15 PM - 6:00 PM

DINNER

ANIMATOR'S PALATE	DECK 4, AFT	6:00 PM & 8:30 PM
CARIOCA'S	DECK 3, AFT	6:00 PM & 8:30 PM
LUMIERE'S	DECK 3, MID	6:00 PM & 8:30 PM
PALO (18+) (FOR RESERVATIONS CALL 7-8843)	DECK 10, AFT	6:00 PM - 8:30 PM
PETE'S BOILER BITES	DECK 9, AFT	6:00 PM - 10:00 PM

LATE NIGHT SNACKS

O'GILLS PUB	DECK 3, FWD	10:45 PM - 11:30 PM
PINOCCHIO'S PIZZERIA	DECK 9, MID	9:30 PM - 12:00 AM
PROMENADE LOUNGE	DECK 3, AFT	10:45 PM - 11:30 PM

ADDED FEATURES

EYE SCREAM	DECK 9, AFT	12:00 PM - 3:30 PM
		4:15 PM - 11:00 PM
BEVERAGE STATION	DECK 9, AFT	24 HOURS
ROOM SERVICE	DIAL 7-4330	24 HOURS

ENTERTAINMENT - LOUNGES - BARS

Adults must be 21 and older to consume alcoholic beverages.

AFTER HOURS	DECK 3, FWD	(AFTER 9:00 PM. ADULTS ONLY)
COVE CAFE (18+)	DECK 9, MID	11:45 AM - 12:00 AM
D LOUNGE	DECK 4, MID	SHOWTIMES
FATHOMS (18+)	DECK 3, FWD	7:15 PM - 2:00 AM
FROZONE TREATS	DECK 9, AFT	11:45 AM - 7:00 PM
KEYS (18+)	DECK 3, FWD	7:00 PM - 12:00 AM
O'GILLS PUB (18+)	DECK 3, FWD	11:45 AM - 12:00 AM
PRELUDES	DECK 4, FWD	5:30 PM - 9:00 PM
PROMENADE LOUNGE	DECK 3, AFT	11:45 AM - 12:00 AM
PINOCCHIO'S PIZZERIA	DECK 9, MID	11:45 AM - 12:00 AM
SIGNALS (18+)	DECK 9, FWD	11:45 AM - 10:00 PM

Public Health Advisory: Consuming raw or undercooked meats, poultry, seafood, shellfish, or eggs may increase your risk for foodborne illness, especially if you have certain medical condition.

Disney Cruise Line
PORT ADVENTURES

Explore and more with our carefully selected Port Adventures. Pass by the Port Adventures Desk, Deck 3, Midship to find out more.

IMPORTANT NUMBERS

Fire/Security: 7-3001
Medical EMERGENCY: 7-3000
Health Center: 7-1923