



# TALLINN

## PORT SHOPPING MAP



### Shopping

- There is plenty of exciting shopping in Tallinn. Don't forget to sample the famous chocolate or the Vana Tallinn, the famous liqueur.

### Don't Forget Your:

- Port Shopping Map
- Photo ID & Key to the World Card
- Cash and/or Credit Cards

### Docking/Anchorage:

- The ship docks at the main pier, it is recommended to take a shuttle in to the old town which is about 15 minutes away.

### Port Adventures:

- Check your ticket for the correct meeting time and location for your tour. Your Port Adventures Team will direct you to transportation.



## SHOPPING ASHORE

Meet Port Shopping Guide Gemma

Watch channel 26-6 for insider tips on how to spend your free time, before or after your tour and where to find the best local goods ashore! Stop by Gemma's desk for more information to help create the best experience for you and your family!



LOOK FOR THE ALL ASHORE LOGO FOR YOUR RECOMMENDED AND GUARANTEED STORES!

## TALLINN OVERVIEW

The name Estonia (which is Eesti in Estonian language) seems to derive from Aestii, used by a Roman chronicler in 100 B.C. to describe all the tribes east of Germany. Its capital –Tallinn– was first mentioned in written chronicles in 1154 by a famous Arab explorer Al-Idrisi, who back then marked it on its world map as Kolōvan. Throughout the history Tallinn has had other names given by its hostile neighbors: Lindanise by the Scandinavians and Reval by the Germans. Eventually the name Tallinn stayed.

The present-day Tallinn was first inhabited in the 10th century when a stronghold was built on Toompea Hill, which ever since remained the seat of the ruling power and the church authorities. The location was chosen by the first settlers for its favorable geographical position—a hillside in the immediate vicinity of the port, which conveniently remained on the East-West trading route.

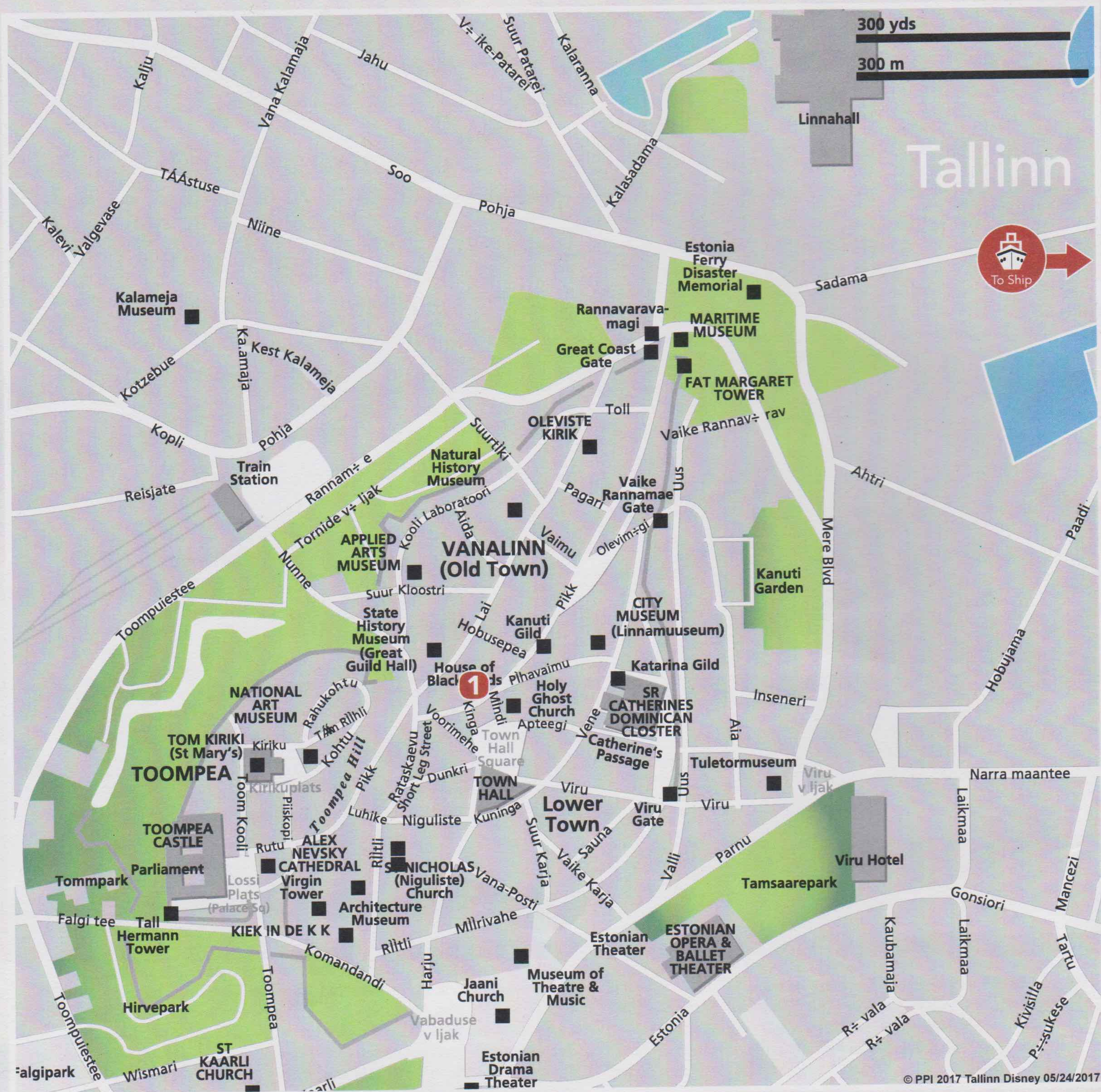
The advantageous position of the town was an object of desire to many neighboring nations, which, at the end, turned to be a motive for continuous warfare.

In 1219 the first foreign invasion occurred when the Danish invaded Northern Estonia. But 100 years later they got tired of the constant native rebellions, sold the territory to German Teutonic Order for 19.000 silver marks. A couple of centuries passed and the Swedes came and then the Russian Empire conquers the country. Estonia declares its first independence in 1918, which lasted until the first Soviet occupation in 1940, followed by Nazi occupation the year after and the second Soviet occupation in 1944.

The Republic of Estonia enjoys its freedom at the fullest for the last 16 years, when the Soviet regime fell into pieces and a totally new future opened up for many ex Soviet Republics.

Nowadays Tallinn is inarguably a beautiful town, which, in spite of numerous wars, rulers and reconstructions, has managed to retain its medieval environment and structure. Actually, the fact that the town's network of medieval streets, churches and houses has been preserved practically intact, has earned the town an honor to be inserted in the Unesco World Heritage List as a living museum.

**ONLY THE STORES LISTED ON THIS MAP P**



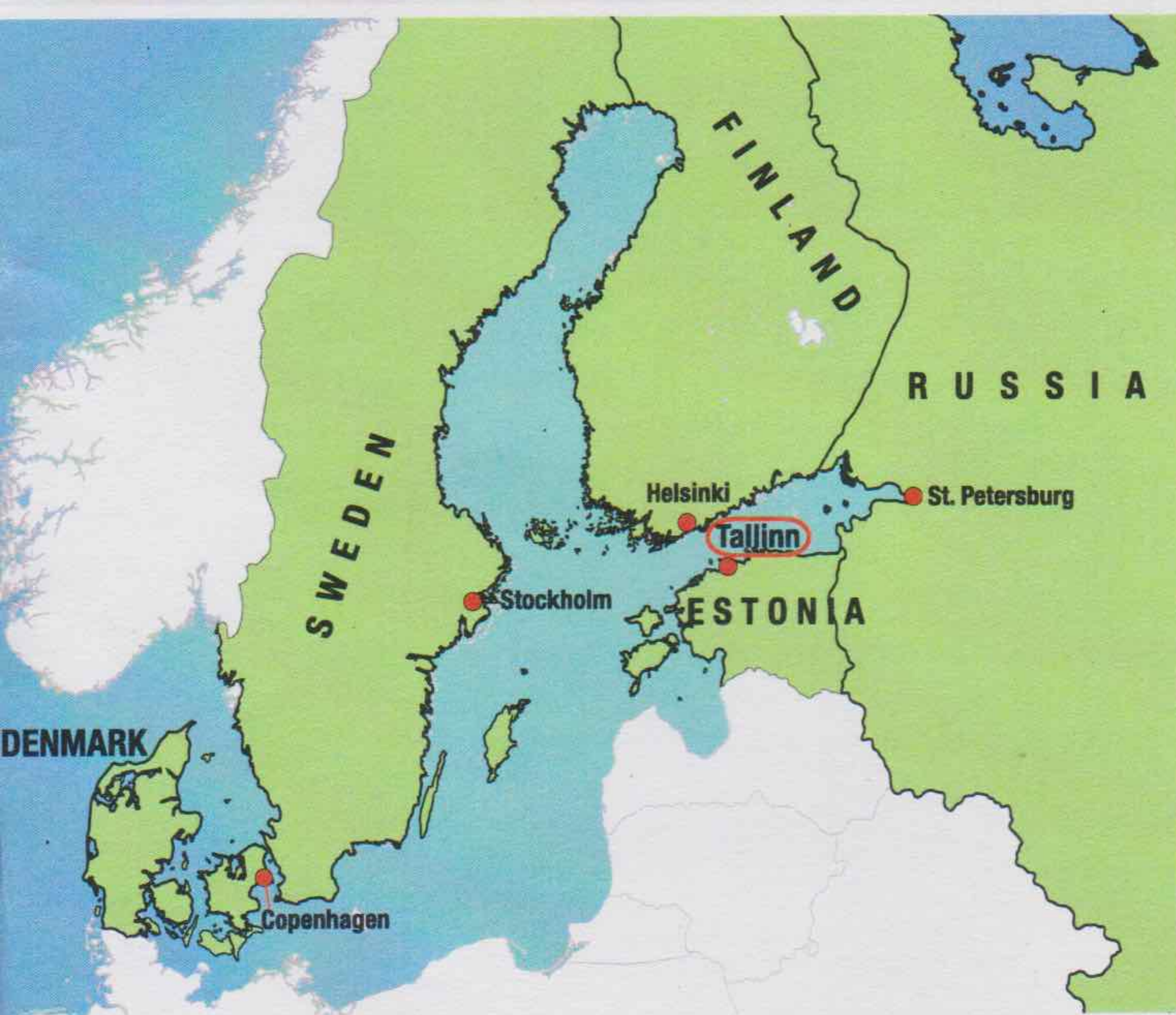
**VAT Refund Program** Value Added Tax (VAT) is a tax refund program in which non-European Union citizens may be entitled to reclaim a portion or all of the tax paid for items purchased in participating stores. Each store's participation in the VAT refund program is discretionary. In most cases, VAT is already added to the purchase price. Please note that regulations and conditions governing the refund of VAT are subject to change. It is the responsibility of the cruise ship Guest to inquire about a store's VAT refund program participation and if their purchase qualifies. For information about participating stores listed on this map, please see your Port Shopping Guide.

# PROVIDE A 60-DAY BUYER'S GUARANTEE.



## 1 RODE GIFT SHOP *Estonian Design and Souvenir Store*

- Located in the heart of the Historical Old Town
- Wide selection of original Estonian quality products
- Handmade goods, wooden, leather and glass
- Jewelry inspired by Estonian nature
- Accessories: bowties, ties and silk scarfs
- Beautiful hand painted ceramics
- Enjoy Tallinn's best coffee, cool drinks and healthy snacks in our summer terrace



## AT A GLANCE

### Capital:

Tallinn

### Location:

Eastern Europe, bordering the Baltic Sea

### Population:

City, 435,245

Metro, 542,983

### Language:

Estonian, Russian, English and Finnish

### Currency:

The local currency is EUR.

Other main currency such as USD is also accepted.

### Banking:

Major Estonian banks are Hansapank, Ühispank and Sampo Pank.

Banks are open Monday to Friday from 9:00am until 4:00/5:00pm

Most banks are closed on Saturdays and Sundays.

### Post Office:

Central Post Office in Tallinn is located in the city center.

### Transportation:

Taxis are available all over the city. Old Town is for pedestrians only, find taxis outside of this area. Complimentary shuttles are available at the end of the pier to take you close to the Old Town area.

### In Case of Emergency:

**Port Agent** – Inflot Shipping Agency

[www.inflot.ee](http://www.inflot.ee)

58 Tuukri Street, 10120 Tallinn, Estonia, Reg. NR 10194382

**E-mail:** Agent@inflot.ee

**E-mail:** Inflot@inflot.ee

**Tel:** 372 60-333-83 / 84

**Fax:** 372 60-333-81

**Director:** Capt. Vladimir Hill

**Cell:** 372 5-045-794

**Manager:** Andrew Syrodoyev • **Cell:** 372 5-062-057

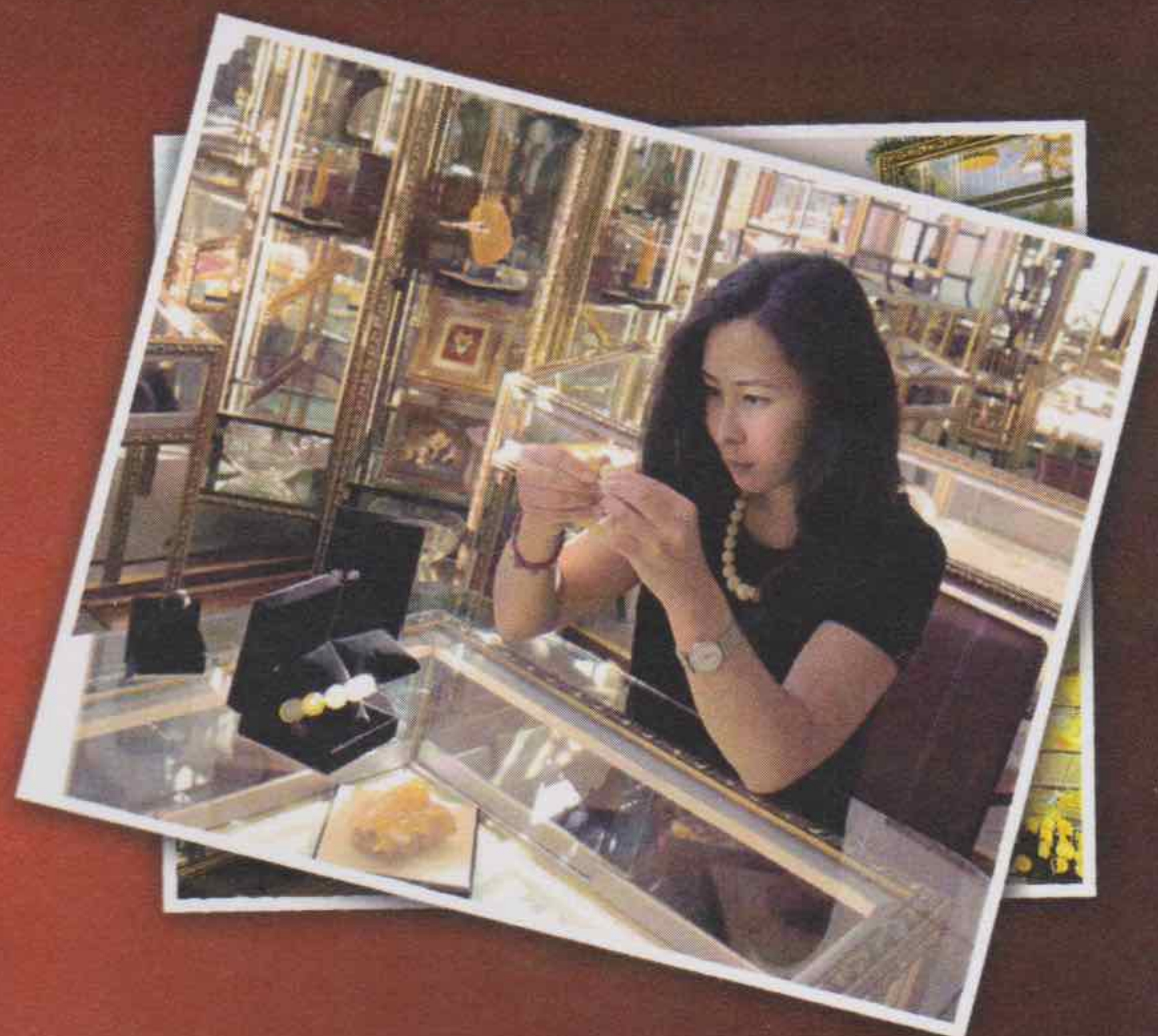
**Agent:** Ruslan Galitsky • **Cell:** 372 5-012-164

Browse your Destination Guide (found in your stateroom) for more details.

### Buyer's Guarantee

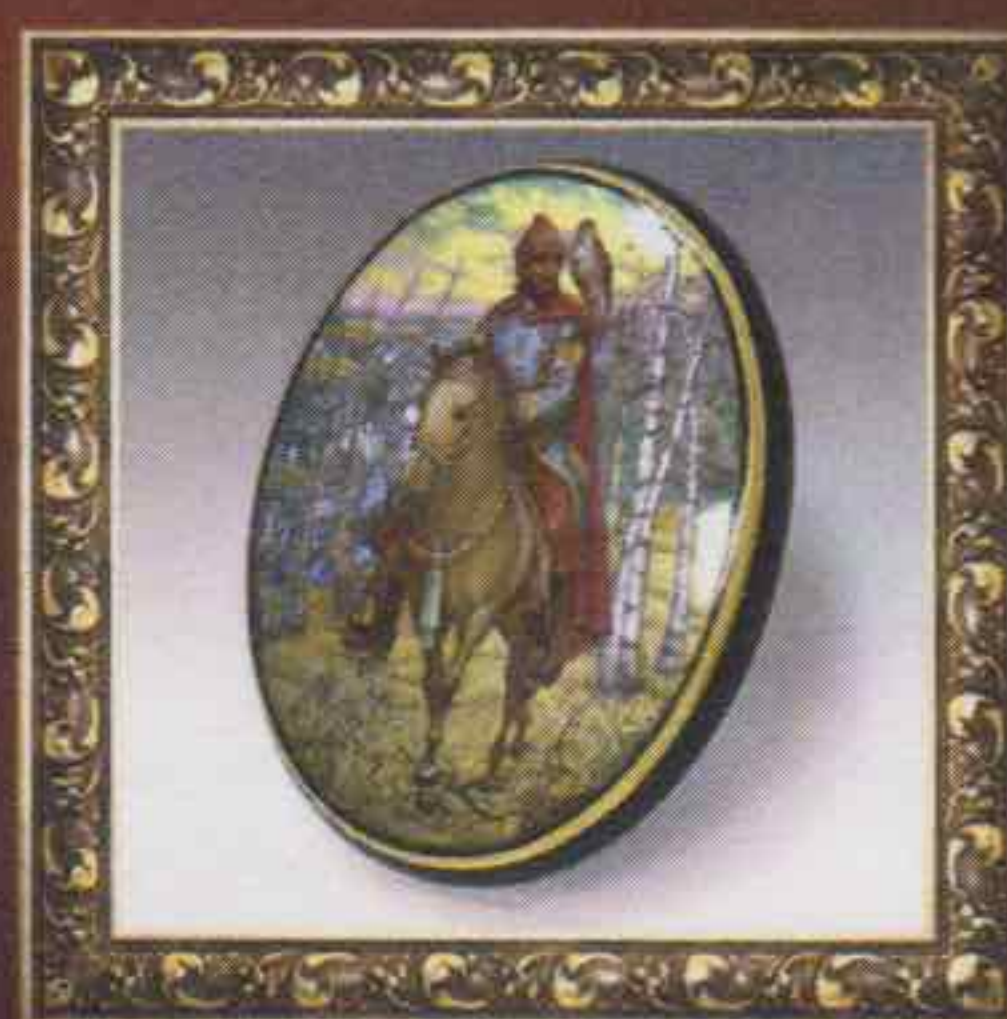
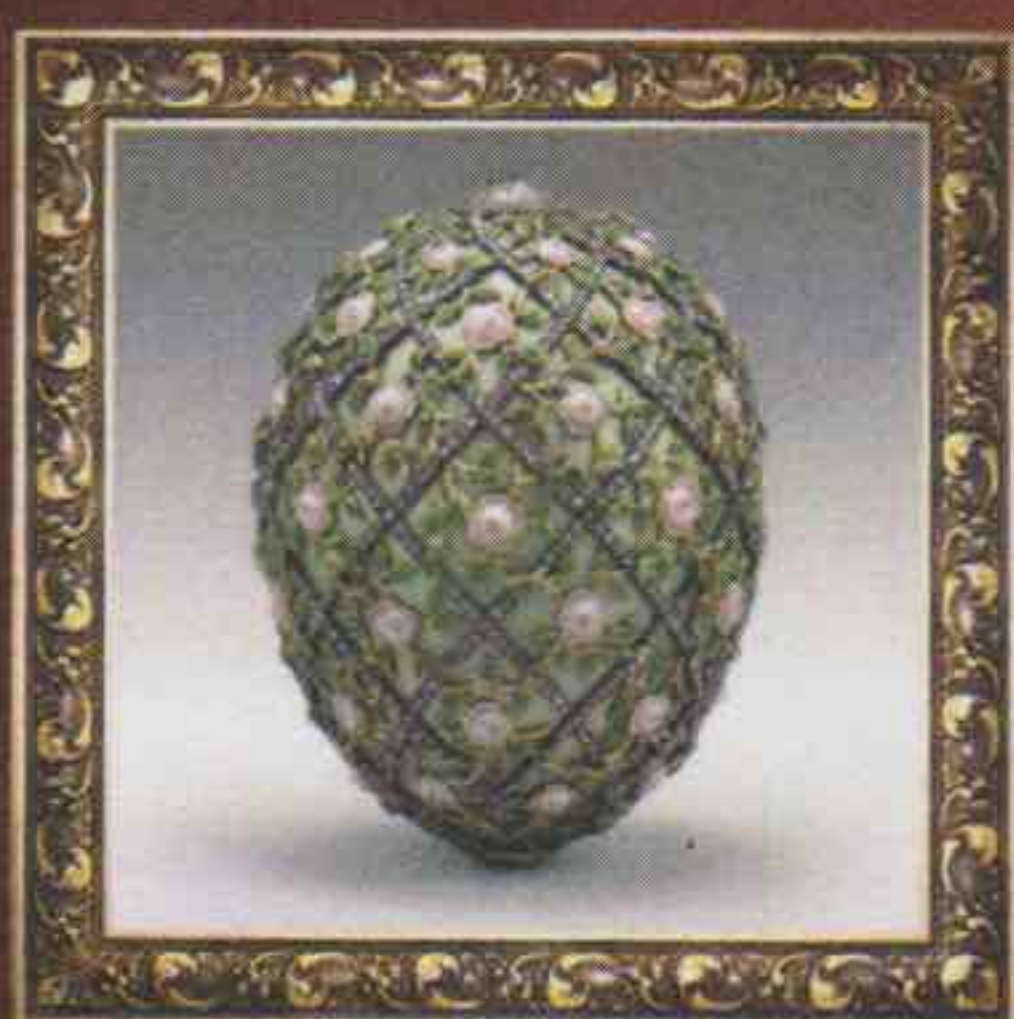
Shop with confidence at each of the recommended stores. All stores listed on the map have paid a promotional fee and given Disney Cruise Line guests a Buyer's Guarantee valid for 60 days after purchase. This guarantee is valid for repair or exchange. Please note the following conditions that apply to the guarantee: Guest negligence or buyer's regret is excluded. Only appraisals from independent, accredited graduate gemologists not affiliated with any retail jeweler will be considered. Electronics and watches requiring service must be returned by the consumer to the respective manufacturer. All purchases, including fragile items, must be checked before leaving the store. Do not mail merchandise without prior authorization. Guests are responsible for postage and appraisal costs. PPI Group, 6261 NW 6th Way, Suite 100, Ft. Lauderdale, FL 33309, Customer Service: 1.888.774.4768 or 954.377.7777, email: Service@ppigroup.com

# ART Galleries



**YOU DESERVE THE BEST. WE HAVE IT.**

*Folk art Jewelry Souvenirs Amber Paintings*



*Russian Amber*  
exclusive collection

46, Nevskiy pr. Saint-Petersburg  
+7(812) 710 40 49; +7(964) 342 03 43

*Please visit our Online Stores:*

**WWW.SOUVENIRBOUTIQUE.COM**

**WWW.ONEGIN-GALLERY.COM**

*ArtSpace*  
FOLK ART COLLECTION

1, Nevskiy pr., St. Petersburg  
Phone: +7(812) 456 06 68

*Solo*

EXCLUSIVE RUSSIAN SOUVENIRS AND AMBER

20, Nevskiy pr., St. Petersburg  
Phone: +7(812) 984 07 67

*Bazar*  
FOLK ART

4, Petrovskaya emb., St. Petersburg  
Phone: +7(812) 449 50 47

*onegin*  
PAINTING & SOUVENIRS

11, Italyanskaya str., St. Petersburg  
Phone: +7(812) 570 00 58

**HERITAGE**  
EXCLUSIVE ART TOKENS

37, Moyka river emb., St. Petersburg  
Phone: +7(812) 312 62 12

## Travel Safety Tips

As in any tourist destination, you will want to take some basic precautions to make the most of your time ashore.

- Be aware of your surroundings, especially in crowded areas.
- Avoid wandering from the main shopping and tourist areas into unfamiliar territory. If venturing out independently, have a plan, use only licensed taxi operators.
- Leave your valuables in your stateroom safe and avoid carrying large amounts of cash. Exercise caution when using ATMs.
- Cameras and handbags should be carried close to your body or concealed out of sight. People who carry handbags or backpacks are particularly vulnerable to purse snatchers on scooters.
- When going ashore, each adult is required to carry a Driver's license, passport or other government-issued photo ID. – Note: Some ports may require Guests to carry passports ashore.
- In general, use the same level of precaution you would use in any tourist destination.

Please remember that while in a foreign country, you are subject to its laws.