



AMSTERDAM

PORT SHOPPING MAP



Shopping

• Shopping in Amsterdam easily accessible on foot and within easy reach of the ship. Ramble through the 'Nine Streets' (those small lanes connecting Prinsengracht, Keizersgracht and Herengracht in between Raadhuisstrat and Leidsegracht)

Don't Forget Your:

- Port Shopping Map
- Photo ID & Key to the World Card
- Cash and/or Credit Cards

Docking/Anchorage:

- The ship will dock at the main Cruise Terminal, just a short distance from the Central Station with footbridges leading to the city center.

Port Adventures:

- Check your ticket for the correct meeting time and location for your tour. Your Port Adventures Team will direct you to transportation.



SHOPPING ASHORE

Meet Port Shopping Guide Gemma

Watch channel 26-6 for insider tips on how to spend your free time, before or after your tour and where to find the best local goods ashore! Stop by Gemma's desk for more information to help create the best experience for you and your family!



LOOK FOR THE ALL ASHORE LOGO FOR YOUR RECOMMENDED AND GUARANTEED STORES!

AMSTERDAM OVERVIEW

Most historians agree Amsterdam was established sometime during the Middle Ages when a group of merchants beached their ships on a sandbank at the juncture of the Amstel and Ikap Rivers. After damming the river, they realized that cargo had to be transferred between sea-going vessels and riverboats – there was no viable alternate route for the upriver cities. They provided the service and 'Amstelredamme' grew powerful.

The modern city center is relatively compact and easy to navigate. In the old Jordaan 'yor DAHN' district, canals and side streets are named for owers and plants. Once the French quarter, the name derives from the local penchant for le Jardin the garden.' It is modern Amsterdam's bohemian quarter.

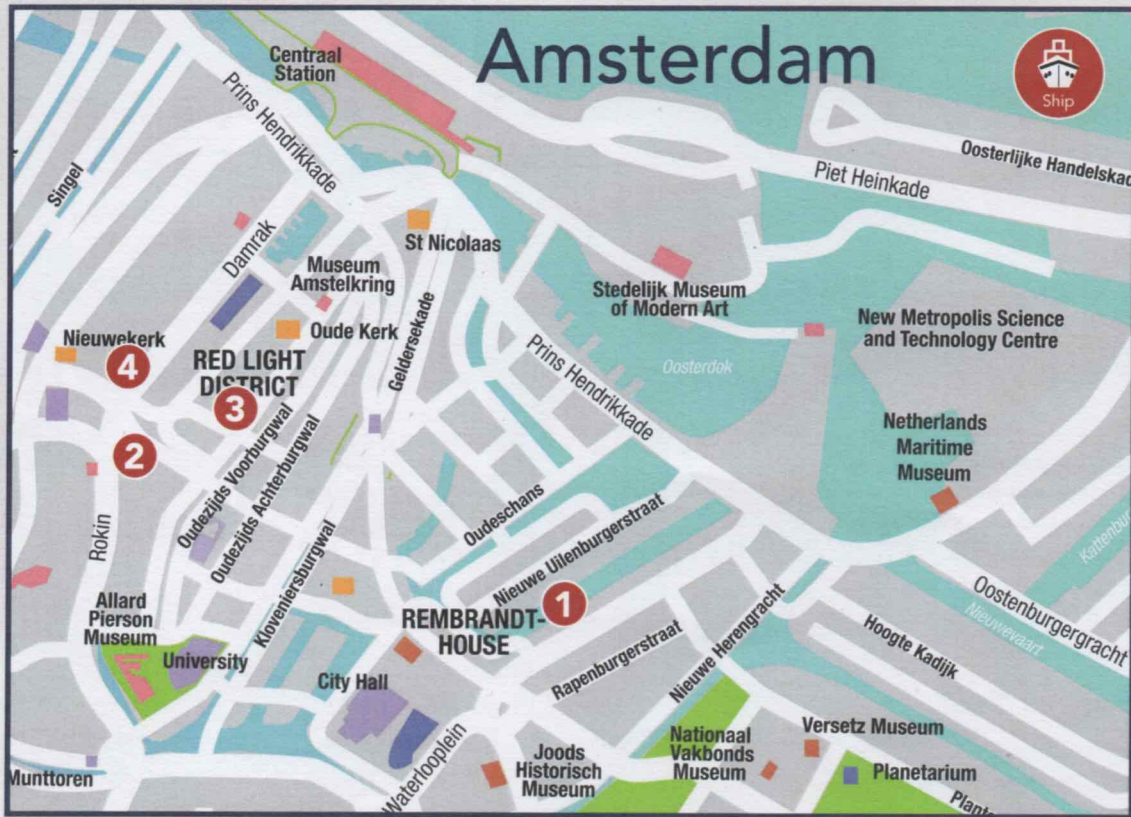
During Holland's prosperous colonial era, wealthy merchants dug the city's signature canals with proceeds from overseas ventures – 16th-century Amsterdam was one of the world's richest cities. Spice, silk, and porcelain brought prosperity. Distinctive narrow homes were

built side-by-side along the new waterways. In an era without cars, boats were the fastest way to the harbor.

Known as 'Venice of the North,' Amsterdam's nearly 100 islands and 60 miles of canals are crossed by 240 bridges and they wrap around the city center in a series of half-circles. The old houses along them feature narrow fronts with traditional Dutch ornamental gables. Some of them lean a bit and look as though they might fall over. But don't worry, they purposely built the old homes side by side because of the soft ground beneath them might shift over time. The old homes are stable and city buildings are historic monuments.

Amsterdam is an architectural treasure and a fascinating cultural melting pot. When compared with other European capitals, Amsterdam is fairly small, but it certainly ranks among Europe's most interesting cities. Amsterdam has long been a center for diamond cutting and it is possible for visitors to watch diamond cutters at work.

ONLY THE STORES LISTED ON THIS MAP



PROVIDE A 60-DAY BUYER'S GUARANTEE.

GASSAN DIAMONDS

Brilliant Choice

A family owned company, located in a formerly steam driven diamond factory in the center of Amsterdam offering a broad variety of shops and services. Every year more than 400,000 tourists visit the historical diamond factory. During the free guided tour multilingual staff explains the various stages of diamond polishing. Come and see our skilled craftsmen at work as they transform the most precious crystal known to man into dazzling ready-to-wear brilliants. Gassan's historical site was chosen for the opening of the first Rolex Boutique. In 2014, this boutique emphasizes the mutual passion of both brands. In our Rolex Boutique, you will find precision, reliability, performance and the highest quality in service. With in-house watchmakers, certified by Rolex, you can be sure that your watch will be serviced at the highest level.

GASSAN DAM SQUARE

Luxury Watches and Jewelry Boutique

Located in the heart of Amsterdam, at Dam Square opposite the Royal Palace you will find the center of luxury. We are the largest jewelry store in Holland selling diamonds and fine jewelry. Great selection of loose polished diamonds, exclusive jewelry and more than 65 watch brands. Timepieces: Audemars Piguet, Breguet, Cartier, Chopard, Omega, Rolex & more. Friendly knowledgeable staff ready to assist you in making the perfect choice.

HENRI WILLIG CHEESE SHOPS

Cheese Direct from the Henri Willig Farm

Famous producer of Dutch baby Gouda cheese. Different varieties to choose from including cow, goat, sheep, organic and more. Learn about the traditional cheese making process in an authentic atmosphere. Quality Dutch products like mustards, syrup waffles and cheese tools. Free sampling of our delicious, high quality home-made cheeses.

CHEESE & MORE BY HENRI WILLIG

Inspirational Cheese Gifts

Enjoy Dutch cheese in a modern cheese shop. Learn all about cheese from the super friendly staff. See our inspirational collection of cheese gifts, great to bring back home. Wide range of mustard, chocolate, cheese tools and syrup waffles. Free sampling of all the varieties of Dutch cheese.

DELIRIUM CAFÉ AMSTERDAM

Fantastic Waterfront Location

Popular lunch spot with locals and visitors. Amazing selection of home-made dishes. Try our mix platter of starters, simply delicious! Enjoy a refreshing drink overlooking the waterfront close to the ship.

Refund Program Value Added Tax (VAT) is a tax refund program which non-European Union citizens may be entitled to reclaim a portion or all of the tax paid for items purchased in participating stores. Each store's participation in the VAT refund program is discretionary. In most cases, VAT is already added to the purchase price. Please note the regulations and conditions governing the refund of VAT are subject to change. It is the responsibility of the cruise ship Guest to inquire about a store's VAT refund program participation and if their purchase qualifies. For information about participating stores listed on this map, please see your Port Shopping Guide.

AT A GLANCE

Capital:

Amsterdam

Location:

Noord Holland

Population:

779,808 (2011)

Language:

Dutch is the main language with English widely spoken and understood.

Currency:

Euro

Banking:

Most Dutch banks are open Tuesday to Friday from 9:00am to 4:00pm. On Monday, business hours mostly begin at 1:00pm. ATMs are available.

Post Office:

Post offices are generally open weekdays 9:00am to 5:00pm. Large post offices may also open on Saturdays (9:00am to noon).

Transportation:

Metered taxis are available at the port.

In Case of Emergency:

Port Agent – Verenigd Cargodoorskantoor B.V.

Valreep 13, 1042 AN Amsterdam

P.O. Box 58417 Amsterdam, 1040 HK

www.vcklogistics.nl

Jan Van Den Aker

E-mail: j.vandenakker@vcklogistics.nl

Cell: 011 31 65 36 80 124

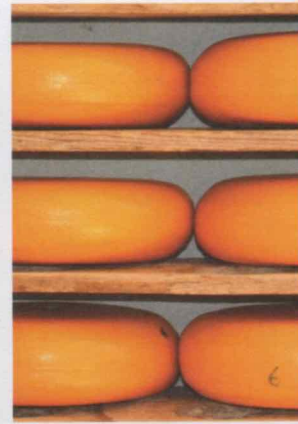
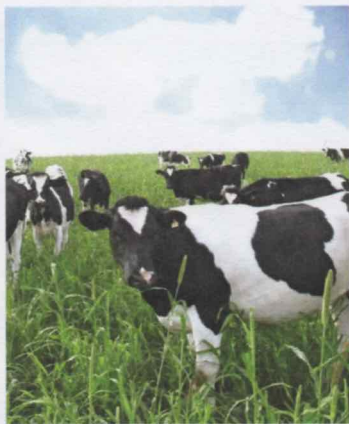
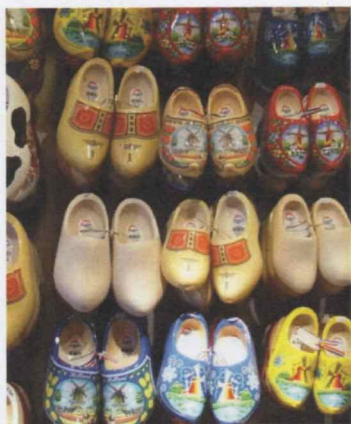
Tel: 011 31 20 58 77 866

Fax: 011 31 20 58 77 888

Browse your Destination Guide (found in your stateroom) for more details.

Buyer's Guarantee

Shop with confidence at each of the recommended stores. All stores listed on the map have paid a promotional fee and given Disney Cruise Line guests a Buyer's Guarantee valid for 60 days after purchase. This guarantee is valid for repair or exchange. Please note the following conditions that apply to the guarantee: Guest negligence or buyer's regret is excluded. Only appraisals from independent, accredited graduate gemologists not affiliated with any retail jeweler will be considered. Electronics and watches requiring service must be returned by the consumer to the respective manufacturer. All purchases, including fragile items, must be checked before leaving the store. Do not mail merchandise without prior authorization. Guests are responsible for postage and appraisal costs. PPI Group, 6261 NW 6th Way, Suite 100, Ft. Lauderdale, FL 33309, Customer Service: 1.888.774.4768 or 954.377.7777, email: Service@ppigroup.com



**PASSENGER
TERMINAL
AMSTERDAM**

**welcome to amsterdam!
enjoy your stay**



Port of Amsterdam



Travel Safety Tips

As in any tourist destination, you will want to take some basic precautions to make the most of your time ashore.

- Be aware of your surroundings, especially in crowded areas.
- Avoid wandering from the main shopping and tourist areas into unfamiliar territory. If venturing out independently, have a plan, use only licensed taxi operators.
- Leave your valuables in your stateroom safe and avoid carrying large amounts of cash. Exercise caution when using ATMs.
- Cameras and handbags should be carried close to your body or concealed out of sight. People who carry handbags or backpacks are particularly vulnerable to purse snatchers on scooters.
- When going ashore, each adult is required to carry a Driver's license, passport or other government-issued photo ID. – Note: Some ports may require Guests to carry passports ashore.
- In general, use the same level of precaution you would use in any tourist destination.

Please remember that while in a foreign country, you are subject to its laws.