

PERSONAL NAVIGATOR

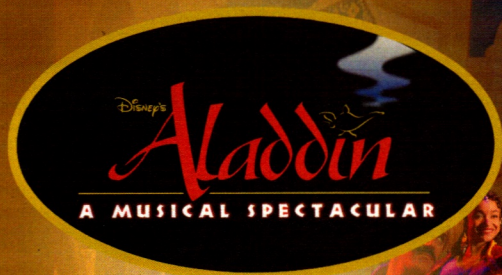


SUNDAY, APRIL 9, 2017

Sunrise 6:22 am Sunset: 7:10 pm
Evening Attire: Formal

Today: Sunny High: 72°F/22°C
Tomorrow: Partly Cloudy High: 76°F/24°C

DAY AT SEA



A fast-paced, musical comedy based on the beloved animated film.

Aladdin, the "street rat" of Agrabah, meets a wise-cracking Genie, battles the evil Jafar, and falls in love with the beautiful and spirited Princess Jasmine. Disney storytelling at its best.



Assistance available at the entrance to the Walt Disney Theatre 30 minutes prior to show time.

WALT DISNEY THEATRE

Deck 3 & 4, Forward
6:15 pm & 8:30 pm

As a courtesy to all Guests, we kindly advise that the saving of seats is **not** permitted in the Walt Disney Theatre.

Disney FANTASY Fun Facts

Tonnage: 130,000 Gross Tons

Height: 216 Feet

Length: 1115 Feet

Important Dates

Name Announcement: March 10, 2009

Steel Cutting: March 16, 2010

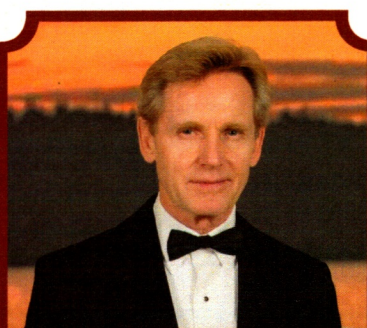
Keel Laying: February 11, 2011

Delivery: February 9, 2012

Almost four football fields in length, the Disney Fantasy is longer than the height of the Eiffel Tower in Paris (1,063 feet). She is also longer than the height of New York City's famous Chrysler building (1,047 feet).

The Disney Fantasy's Whistle

The Disney Fantasy's whistle, a prominent element of the "Sailing Away" deck party at the start of the cruise, is quite the musical talent. It's able to perform not just the first musical line of "When You Wish Upon a Star" but also the second line of the song ("makes no difference who you are") plus several measures of "Yo Ho (A Pirate's Life for Me)," "It's a Small World," "Be Our Guest," "Hi Diddle Dee Dee (An Actor's Life for Me)," "A Dream is a Wish," and "Do you want to build a Snowman".



CAPTAIN'S RECEPTION

Enjoy live music and a cocktail while meeting some of the ship's officers.

Lobby Atrium, Deck 3, Midship,
5:15 pm & 7:30 pm

Enjoy an exclusive photo opportunity with Commodore Tom at
5:30 pm & 7:30 pm, Lobby Atrium

Don't Miss:

Passover Seder with Rabbi Brad Levenberg

Register at Guest Services, Deck 3, Midship
The Seder will be held at 4:45 pm in Cabanas on Monday, April 10th. Please register your interest at our Guest Services Desk, located Deck 3, Midship.

Good Morning Disney Fantasy

Channel 5 - Repeated from 5:00 am - 12:00 pm
Tune in to channel 5 as your Cruise Director highlights the upcoming events and activities for the day.

Disney Movie Challenge Poolside

Deck 11 Stage, Deck 11, Midship - 12:15 pm
So you like movies? And you like bingo? This deck party has them both! Come on out to watch all your favorite movie clips and just maybe your team will win the opportunity to choose the movie played by the pool today!

Mickey 200

The Tube, Deck 4, Aft - 1:00 pm
Don't eat your vegetables... race them in this wild and wacky charge to the finish line. May the best veggie win! (Limited Availability)

London Rocks (18+)

The Tube, Deck 4, Aft - 11:15 pm
Hop onboard and hit the dance floor as we take you on a ride through the charts, partying it up to some of the hottest British hits! With a special performance by the Underground Dancers.

DINNER MENU

Animator's Palate : Pacific Rim Cuisine
Enchanted Garden : Continental Market Cuisine
Royal Court : French Cuisine

DRINK OF THE DAY

Bahama Mama (Alcoholic)
Coco Bali (Non Alcoholic)

IMPORTANT NUMBERS

Fire/Security: 7-3001
Medical Emergency: 7-3000
Health Center: 7-1923

ADULT ACTIVITY HIGHLIGHTS



SENSES SPA FITNESS CLASSES & SEMINARS

Pure Form Pilates - Donald's Pool - 7:00 am
Tour De Cycle (Sign-Up Required) - Senses Fitness Center - 7:45 am
Body Sculpt Boot Camp (Nom. Fee) - Senses Fitness Center - 9:00 am
Acupuncture Seminar - Senses Spa & Salon - 9:30 am
Detox for Health & Weight Loss - Senses Spa & Salon - 10:30 am
Non Surgical Facelift - Senses Spa & Salon - 11:30 am
Acupuncture Pain Relief - Senses Spa & Salon - 1:00 pm
Seminar: Improving Your Posture-Walk in Comfort - Senses Fitness Center - 2:00 pm
Seminar: Burn Fat Faster - Senses Fitness Center - 2:30 pm
Thermage: Tighten, Lift & Contour with Thermage - Senses Spa & Salon - 3:15 pm
Fab Abs - Senses Fitness Center - 4:00 pm
Acupuncture: Stress, Insomnia and Depression - Senses Spa & Salon - 4:30 pm
Complimentary Footprint Analysis - Senses Spa & Salon - 5:00 pm

TASTING CLASSES

Chocolate & Liquor Tasting (21+) - Ooh La La - 12:15 pm
Rum Tasting (21+) - Meridian - 1:00 pm
Champagne Tasting (21+) - Ooh La La - 1:45 pm
Martini Tasting (21+) - Meridian - 3:45 pm
Mixology (21+) - Skyline - 4:00 pm
Tequila & Margarita Tasting (21+) - Ooh La La - 4:00 pm
Whiskey Tasting (21+) - Cove Cafe - 10:00 pm
Cognac Tasting (21+) - Meridian - 10:00 pm
 Please make reservations for tastings at Guest Services for a nominal fee.
 Tasting Seminars are only for Guests 21 and older.

1820 SOCIETY: LUNCH

Cabanas, Deck 11, Aft - 12:00 pm
 Get to know your fellow Society members over lunch.

1820 SOCIETY: MINI GOLF

Goofy Golf, Deck 13, Aft - 3:45 pm
 Can you get a hole in one? Give it a try with some mini golf.

1820 SOCIETY: ICE CREAM SOCIAL

Frozone Treats, Deck 11, Midship - 9:45 pm
 Join your fellow Society members for some ice cream and conversation.

1820 SOCIETY: MOVIE TRIVIA

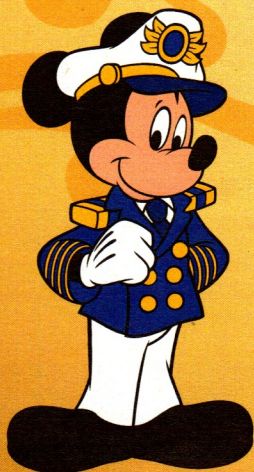
Frozone Treats, Deck 11, Midship - 11:00 pm
 Meet up with a member of our cruise staff team and other fellow 1820 Society members for trivia featuring the stars, songs, and memories that can only be brought to you by the movies.

ART OF THE THEME SHOW TOUR

Meridian, Deck 12, Aft - 9:30 am
 Join us for a guided tour highlighting the design, Imagineering and artistry of the ship. This tour is reserved for Guests 18 and over.

ANYONE CAN COOK: LOBSTER RAVIOLI

D Lounge, Deck 4, Midship - 2:15 pm
 From our galley to yours. Join our chefs as they show you how to prepare delicious dishes. Today's Menu - Lobster Ravioli.



FUN FOR ALL AGES HIGHLIGHTS



WAKE UP WITH DISNEY JUNIOR

D Lounge, Deck 4, Midship - 8:30 am
 What happens when you experience unlimited fun with your favorite Disney Junior shows? You get an exciting dance party designed especially for preschoolers ages seven and under.



DISNEY ANIMATION: CREATING A CHARACTER

D Lounge, Deck 4, Midship - 9:45 am
 Go behind the scenes at Walt Disney Animation Studios as Walt Disney himself talks about his most famous characters, then learn the basic techniques of drawing your favorite pals in this fun and interesting enrichment program.



SENSES SPA BINGO

Bingo Pre-Sales start at 11:00 am
D Lounge, Deck 4, Midship - 11:15 am
 Four CASH prizes to be won! Plus great spa prizes that will pamper you, including a mini facial and massages all courtesy of the Senses Spa and Salon. Serenity now! Pre-Sales start 15 minutes prior to game.



DISNEY VACATION CLUB GROUP PREVIEW

D Lounge, Deck 4, Midship - 12:30 pm
 Want to learn more about taking magical vacations year after year? Please see a Disney Vacation Club Cast Member on Deck 4, Midship, or call 7-2805 from your stateroom phone for more information about our interactive group presentation.



CHIP-IT GOLF (12+)

Lobby Atrium, Deck 3, Midship - 3:00 pm
 It's par for the course for our Guests 12 and older to compete on our special "greens" in this fun tournament.



\$5,000 MEGA JACKPOT BINGO

Bingo Pre-Sales start at 4:00 pm
D Lounge, Deck 4, Midship - 4:15 pm
 Don't miss your chance to take home big money! 4 CASH prize games and great raffle prizes to be won! Complete the fourth game in 46 numbers or less and win the \$5,000 Mega Jackpot! Pre-Sales start 15 minutes prior to game.



SO YOU THINK YOU KNOW YOUR FAMILY?

D Lounge, Deck 4, Midship - 7:30 pm
 This fun-filled family game show is always full of surprises. Find out how well you know, or don't know your family!

YOUTH ACTIVITIES HIGHLIGHTS

DINE & PLAY

A convenience for families dining at 8:15 pm, our Youth Activities counselors will be available at 9:15 pm at the entrance of Royal Court, Enchanted Garden and Animator's Palate dining rooms to bring registered children to join the fun in the Youth Activity areas.



Deck 5, Midship (7-1440)
(3-12 years old)

9:00 am - 12:00 am

MICKEY'S PUZZLE PLAYTIME

11:30 am

Come and play with Mickey & friends as they share their favorite games, puzzles and dances!

TOY STORY BOOT CAMP

3:15 pm

Join Corporal Green in our own version of boot camp as we learn how to have fun - The Toy Story way!



Deck 5, Midship (7-1445)
(3-12 years old)

9:00 am - 12:00 am

ANYONE CAN COOK

2:00 pm

Anyone can cook as we work together to create some of our favorite treats.

GET THE HOOK

3:15 pm

A villainous villain has stolen Captain Hook's prized golden hook. Become a member of the Top Deck Detective Agency and help solve the clues to retrieve Hook's hook.



Deck 13, Midship (7-9743)
(11-14 years old)

9:00 am - 1:00 am

BRAINS AND BRAWNS

2:30 pm

You will compete against each other to solve clues, take part in physical challenges, and reach the finish first.

MAGIC SHOW

7:30 pm

The Magnificent Magician will demonstrate to you some of the best known magic tricks on the sea.



Entrance on Deck 4, Forward (7-9418)
(14-17 years old)

9:00 am - 2:00 am

ZOMBIFIED

12:00 pm

A big movie producer is looking for zombies to help him film the finale to his latest masterpiece, Zombified.

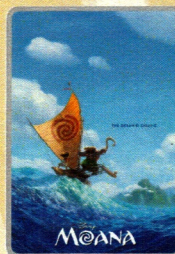
DREAM NOW! SEA HOW! - CREATE IT

3:30 pm

Imagine a job where your days are spent dreaming up plots, characters, designs or mechanics that only come from one place. . . In this VIP Experience you will meet one of the creative minds with Disney. A special Guest will ignite your imagination and answer your questions.

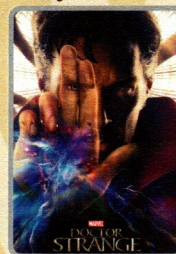
BUENA VISTA THEATRE

Deck 4 & 5, Midship
Today's Movies



FAMILY MOVIE
FUN TIME
8:30 am

Duration: 1 hr 53 mins
Rating: PG



3D

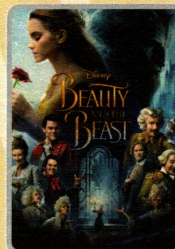
12:30 pm

Duration: 1 hr 55 mins
Rating: PG-13

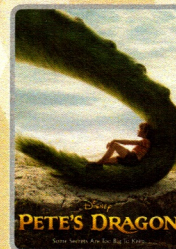


2:45 pm

Duration: 2 hrs 4 mins
Rating: PG



5:15 pm & 8:00 pm
Duration: 2 hrs 9 mins
Rating: PG



10:45 pm
Duration: 1 hr 42 mins
Rating: PG



FAMILY VARIETY ACT

Featuring the Percussion & Comedy of JunNk, as they entertain the entire family in this fun-filled show.

*Walt Disney Theatre,
Deck 3, Forward,
2:00 pm
(Doors open 15 Minutes prior)*



ADULT VARIETY ACT

Featuring the Physical Comedy of Charles Peachcock, as he entertains you in this adult exclusive show.

*The Tube (18+),
Deck 4, Aft,
9:45 pm & 10:45 pm*

YOUTH ACTIVITIES OPEN HOUSE

Open House is an opportunity for all to come and participate in a variety of exciting activities and free time in the Oceaneer Club, Oceaneer Lab, it's a small world nursery, Vibe and Edge throughout the cruise. During these times secured programming will still be offered in the other venue for those looking to check their children into care.

Disney's Oceaneer Lab: 7:00 pm - 8:30 pm
Edge: 9:00 am - 10:00 am & 6:00 pm - 7:30 pm
Vibe: 9:00 am - 10:00 am & 7:30 pm - 9:00 pm

MORE TO ENJOY WHILE ONBOARD

EASTERN CARIBBEAN

Disney Cruise Line offers a variety of sailings to exotic ports in the Caribbean, including port of Tortola, in the British Virgin Islands. Most voyages even include a stop at Disney Castaway Cay. Visit the Disney Vacation Planning desk, Deck 4, Midship, for more information. Disney Vacation Planning tends to get busy on the last day of sailing. Don't miss the opportunity to plan your next Disney vacation.

DISNEY VACATION CLUB® GROUP PREVIEW

Want to learn more about taking magical vacations year after year? Please see a Disney Vacation Club Cast Member on Deck 4, Midship, or call 7-2805 from your stateroom phone for more information about our interactive group presentation.

PORT SHOPPING INFORMATION

Join your Port Shopping Guide, Rita, to learn about the incredible shopping ashore this cruise! Everything will be covered from diamonds to t-shirts, Rolex to rum-cake. FREE charm bracelet for everyone who attends! Raffle to win OVER \$1000 in prizes & giveaways! 11:15 am, Buena Vista Theatre, Deck 4, Midship.

Connect @ Sea

CONNECT@SEA

We are now offering a NEW and improved Internet service to stay connected on your cruise like no other in the industry! Internet packages range from \$0.25 per MB - \$89.00 (1000 MB package). For more information contact your Connect@Sea Expert or Guest Services onboard.

ONBOARD AIRLINE CHECK IN

Stop by the Guest Services Desk, Deck 3, Midship to find out about enrolling in our Onboard Airline Check In Service.



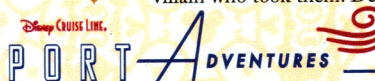
CASTAWAY CAY 5K REGISTRATION (10+)

Sign up today for the Castaway Cay 5K! Please visit the Port Adventures Desk or the Guest Services Desk to register at anytime prior to our arrival at Disney Castaway Cay. Please note that runners must be 10 years of age or older to participate. Additionally, no strollers, motorized wheelchairs or scooters, are permitted to participate in the Castaway Cay 5K.



MIDSHIP DETECTIVE AGENCY

The puppies from 101 Dalmatians have gone missing! Use your special detective "badge" to track down the puppies and catch the villain who took them. Decks 2 & 5, Midship.



Port Adventures provide you and your family with the very best recreation, leisure and sightseeing in Tortola, St. Thomas and Castaway Cay. Whether exploring the Baths on Virgin Gorda, exploring coral reefs on the Captain Nautica Snorkeling Expedition, flying high on a parasailing adventure or just kicking back and relaxing on an Island tour. Whatever it is you choose to do, there is adventure waiting for you in each port.

Visit the **Port Adventures Desk, Deck 5, Midship**, for more information.



SENSES
SPA & SALON

**ONBOARD
ACUPUNCTURE**

Acupuncture is safe and effective medicine that allows your body to heal itself. It is painless, deeply relaxing and rejuvenating for mind and body, and is effective for various health conditions.

See your onboard Acupuncturist for your complimentary consultation.

Senses Spa & Salon, Deck 11, Forward, Extension 7-1465



SOPHIA FIORI
DIAMONDS

Discover the elegant Disney inspired diamond jewelry collection by Sophia Fiori, one of the world's leading designers of diamond jewelry.

**AVAILABLE AT WHITE CAPS
DECK 3, FORWARD**



**FORMAL
PORTRAITS
TONIGHT!**

Now that the family is dressed up and ready to enjoy the evening, capture the memories in your formal attire by visiting our professional portrait studios located in the Lobby Atrium, Deck 3, Midship.

5:15 pm - 6:00 pm

7:15 pm - 8:30 pm

9:30 pm - 10:15 pm

**Please note that photos are available for viewing on our interactive photo kiosks approximately five hours after being taken and are only available for purchase during this cruise. Photo sizes are preset and cannot be changed.*

SHOPPING

BIBBIDI BOBBIDI BOUTIQUE

Young Princesses and Princes can get ready for a formal evening with a makeover at the Bibbidi Bobbidi Boutique. Make your reservations by visiting Bibbidi Bobbidi Boutique, Deck 5, Midship or dialing extension 7-9438. Limited space available.

STAR WARS DAY AT SEA ART

Discover the amazing artwork available for purchase at the Vista Gallery including the commemorative artwork created especially for Star Wars Day at Sea. Ask a merchandise host/hostess for details on how you can purchase and take home any of these galactic art pieces. Limit two (2) per Guest per Limited Edition product. Deck 4, Midship.

SOPHIA FIORI DIAMOND TRUNK SHOW

Sophia Fiori is the world's leader in colored diamonds and jeweler to the stars. Your Sophia Fiori Jewelry Stylist and diamond industry expert has brought onboard over \$1 Million in Diamonds and Tanzanite Jewelry at all price points from \$500 up to extravagant connoisseur pieces. White Caps, Deck 3, Forward.

STAR WARS DAY AT SEA TOTE BAG

Travel the galaxy in style with a Star Wars Day at Sea tote bag. When you spend \$40.00 or more in the shops, you can purchase the event tote bag for \$19.99. This item is available while supplies last. Deck 3, Forward.

ALEX AND ANI DISNEY CRUISE LINE LOGO BRACELET

Head over to Sea Treasures to pick up the Alex and Ani Disney Cruise Line Logo bangle designed specially for Disney Cruises. Deck 3, Midship.

TAG HEUER TIMEPIECES

Define the time-honored conventions of Swiss watchmaking with the latest releases from TAG Heuer. Find classic timepieces and more at White Caps, Deck 3, Forward.

IMPORTANT INFORMATION

Security Notice

All Guests (including children) who wish to disembark the ship are required to present their Key to the World card at the gangway. A photo ID is also required for those Guests who are 18 years of age or older. Guests under the age of 18 are required to have a parent, guardian or other responsible adult sign an authorization form at the Guest Service Desk if they wish to go ashore unaccompanied or with any adult from another stateroom.

Insect Repellent Advisory

Protect against mosquito bites and related illnesses when going ashore. Insect repellent is available for purchase in White Caps. When using both sunscreen and insect repellent, use sunscreen first and apply insect repellent on top of sunscreen.

Cold and Flu Reminder

Please wash hands frequently and thoroughly, particularly before meals. Contact the Health Center by dialing 7-1923, should anyone in your party become ill.

Corridor Quiet Hours

As a courtesy to all our Guests, please recognize quiet hallway hours from 10:00 pm til 8:00 am

Inclement Weather

For the safety of all Guests, outdoor events may be changed due to unforeseen weather conditions.

Environmental Message

With Disney's commitment to the Environment, please refrain from throwing anything over the Ship's side. Thank you!

No Reserved Seats Policy

As a courtesy to all our Guests, we kindly advise that the saving of seats is not permitted in the Walt Disney Theatre, and the saving of the sun loungers is not permitted on Deck 11, 12, and 13. Items left unattended will be returned to lost and found at Guest Services, Deck 3 Midship.

Smoking

For the comfort of our Guests, the following areas are designated as smoking areas:

*Deck 13, forward, port side by Currents
*Deck 12, aft, port side outdoor area that is accessible through the Meridian Lounge
*Deck 4, aft, port side from 6:00 pm to 6:00 am only (all of Deck 4 is non-smoking from 6:00 am to 6:00 pm)

Smoking is prohibited inside all Guest staterooms and on stateroom verandahs. Guests found smoking in their staterooms or on their verandahs will be charged a \$250 stateroom recovery fee. Electronic cigarettes may only be used in designated smoking areas.

Walt Disney Theatre

Theatrical performances may use artificial fog, strobe lights, pyrotechnics and other special effects. For the safety of our performers and the comfort of those around you, the use of any photography, video recording device or any electronic equipment is prohibited.

Verandah Safety

Please do not leave any combustible materials on your balcony when not present in your stateroom for safety reasons.

Morning	8:30	8:45	9:00	9:15	9:30	9:45	10:00	10:15	10:30	10:45	11:00	11:15	11:30	11:45	12:00	12:15	12:30	12:45	1:00	1:15	1:30		
FUNNEL VISION	Toy Story (G) Open Captioning Funnel Vision					Frozen (PG) Open Captioning Funnel Vision										Movie Challenge Poolside Funnel Vision							
BUENA VISTA THEATRE	Family Movie Fun Time: Moana (PG) Duration: 1 Hour 53 Minutes										Port Shopping Talk					Dr. Strange (PG-13) - 3D							
CHARACTERS		Joy Preludes		Daisy Preludes		Joy Preludes	Boo Lobby Atrium (V)			Peter Pan Preludes		Cpt. Hook Preludes						Cpt. Hook Preludes		Minnie Dk 4, Balcony			
	 D Lounge		Boo Lobby Atrium (V) Dk 4, Balcony	Needleman Sulley Lobby Atrium (V) Dk 4, Balcony	George Dk 4, Balcony		Needleman Sulley Lobby Atrium (V) Dk 4, Balcony	George Dk 4, Balcony		Peter Pan Preludes						Peter Pan Preludes						Goofy Preludes	
FUN FOR ALL AGES				Crafts: 3D Crafts La Piazza	 D Lounge		Disney Trivia La Piazza	Bingo Pre Sales	Senses Spa BINGO D Lounge						 Deck Stage		 The Tube (Limited Availability)						
		Interdenominational Service Outlook (Guest Led)				Walking Ship Tour Preludes		Toddler Time Outlook		Crafts: Door Hangers La Piazza					Disney Vacation Club Group Preview D Lounge								
ADULTS	Friends of Bill W. Outlook	Crafts: Tile Coasters O'Gills Pub		Art of The Theme Show Tour Meridian		Pub Quiz O'Gills Pub			Animation Class O'Gills Pub		Port Shopping Talk Buena Vista Theatre					1820 Society: Lunch Cabanas		Cruisin' Solo Lunch Royal Court			Martyn Rowlands LIVE Quiet Cove Pool		
											Dream Team Draft - Baseball O'Gills Pub					TV Tunes Trivia O'Gills Pub			Crafts: Origami Favorites O'Gills Pub				
VIBE 14-17 YEARS OLD	Youth Activities Open House					Open for Teens		Coffee Break		Disney Scene It				Zombified									
EDGE 11-14 YEARS OLD	Youth Activities Open House					Animation Cells				That's Hilarious				Marshmallow Olympics					Trivia Challenge				
OCEANEER LAB 3-12 YEARS OLD	Human Bingo		Magic PlayFloor			Super Sloppy Science					Stitch's Adventure Squad							Wacky Relays					
OCEANEER CLUB 3-12 YEARS OLD	Pre-School Fun (3-5 Years Old)					Magic Show			Memory Wall		Mickey's Puzzle Playtime							Aloha Luau					
	Little Einstein's Adventure																						

Afternoon	1:45	2:00	2:15	2:30	2:45	3:00	3:15	3:30	3:45	4:00	4:15	4:30	4:45	5:00	5:15	5:30	5:45	6:00	6:15	6:30	6:45	
FUNNEL VISION					Monsters, Inc. (G) Open Captioning Funnel Vision						Frozen Fever (G) - OC Funnel Vision				Up (PG) Open Captioning Funnel Vision							
BUENA VISTA THEATRE	Star Wars: Episode V. The Empire Strikes Back (PG) Duration: 2 Hours 4 Minutes										Beauty and the Beast (2017) (PG) Duration: 2 Hours 9 Minutes											
CHARACTERS	Tinker Bell Lobby Atrium (V)	Goofy Preludes				Geppetto Preludes		Jiminy Preludes	Pluto Dk 4, Balcony		Donald Dk 4, Balcony		Mickey Dk 4, Balcony		Minnie Dk 4, Balcony							
	Queen of Hearts Dk 4, Balcony		White Rabbit Dk 4, Balcony		Tinker Bell Lobby Atrium (V)		Belle Dk 4, Balcony		Pinocchio Preludes		Jiminy Preludes		Daisy Preludes		Cinderella Lobby Atrium	Goofy Preludes						
FUN FOR ALL AGES	Walt Disney Theatre				Lobby Atrium (12+)		Crafts: Buttons La Piazza		Bingo Pre Sales	\$5,000 Mega Jackpot D Lounge				Captain's Welcome Reception Lobby Atrium				A MUSICAL SPECTACULAR Walt Disney Theatre				
	Crafts: Animal Masks La Piazza				Disney Tunes Trivia La Piazza		Family Superstar Karaoke The Tube				Crafts: Paper Plane Making The Tube				Formal Night with The Dreamers Lobby Atrium				Crafts: Memory Pages D Lounge			
ADULTS	Movie Quotes Trivia O'Gills Pub		D Lounge - Lobster Ravioli			Pictionary Challenge O'Gills Pub		1820 Society: Mini Golf Goofy Golf		Ultimate Disney Trivia O'Gills Pub				Live Guitar with Martyn Rowlands Quiet Cove		Footprint Analysis Senses Spa & Salon						
VIBE 14-17 YEARS OLD	Zombified		Dive into DJ'ing					Dream Now! Sea How! - Create It				Marshmallow Olympics		Foosball Tournament		Disney Cruise Line Trivia		Cards Tournament				
EDGE 11-14 YEARS OLD	Craft Corner			Brains and Brawns					Anyone Can Cook				Sports Deck Fun					Youth Activities Open House				
OCEANEER LAB 3-12 YEARS OLD			Anyone Can Cook					Get the Hook		Parachute Games				Around the World in 7 days								
OCEANEER CLUB 3-12 YEARS OLD			Cruisin' with Crush				Scavenger Hunt		Toy Story Boot Camp				Tinker Bell's Talent Show									

Evening	7:00	7:15	7:30	7:45	8:00	8:15	8:30	8:45	9:00	9:15	9:30	9:45	10:00	10:15	10:30	10:45	11:00	11:15	11:30	11:45	12:00	
FUNNEL VISION	Pixar Short Films (G) Funnel Vision				Toy Story 2 (G) Open Captioning Funnel Vision								Ant-Man (PG-13) Open Captioning Funnel Vision									
BUENA VISTA THEATRE					Beauty and the Beast (2017) (PG) Duration: 2 Hours 9 Minutes								Pete's Dragon (PG) Duration: 1 Hour 42 Minutes									
CHARACTERS		Mickey Mouse Dk 4, Balcony			Donald Preludes						Minnie Preludes			Daisy Preludes								
		Minnie Preludes		Mickey Dk 4, Balcony		Mickey Dk 4, Balcony						Mickey Mouse Dk 4, Balcony										
FUN FOR ALL AGES			Captain's Welcome Reception Lobby Atrium											Formal Night After Party with The Dreamers D Lounge								
			So You Think You Know Your Family? D Lounge																			
			Family Dance Party The Tube					Crafts: Memory Pages D Lounge				Love Songs with Aaron Lotzow Lobby Atrium										
ADULTS			50's and 60's Music Trivia O'Gills Pub							Club DJ J Alan The Tube		Variety: Charles Peachock The Tube				Variety: Charles Peachock The Tube				Going Underground with Club DJ J Alan The Tube		
			Piano Men Tribute with Aaron Lotzow La Piazza									Team Trivia O'Gills Pub				Team Trivia O'Gills Pub				Music & Martinis with Summer Breeze La Piazza		
VIBE 14-17 YEARS OLD	Cards Tournament		Youth Activities Open House					Pump It Up					Magic Show					Heroes and Villains				
EDGE 11-14 YEARS OLD	Open House		Magic Show			Tween Choice			Video Game Challenge			Pictionary			Heroes and Villains			Karaoke				
OCEANEER LAB 3-12 YEARS OLD	Youth Activities Open House								Lights, Camera, Improv!						Piston Cup Challenge							
			Anyone Can Cook																			
OCEANEER CLUB 3-12 YEARS OLD	Magic PlayFloor				Pluto's Pajama Party								Dress Up Fun		Once Upon a Time				Cartoon Time			

Symbol for activities that will be repeated during the cruise



FOLD

Fold along the dotted lines and take me with you so you don't miss any of the fun!

FOLD

YOUTH ACTIVITIES OPEN HOUSE
A non-secured program with activities for families, adults and children to enjoy together.



SUNDAY, APRIL 9, 2017 - DAY AT SEA

BUENA VISTA THEATRE

Deck 4 & 5, Midship



FAMILY MOVIE 3D

FUN TIME 8:30 am Duration: 1 hr 53 mins Rating: PG	STAR WARS 12:30 pm Duration: 1 hr 55 mins Rating: PG-13	STAR WARS 2:45 pm Duration: 2 hrs 4 mins Rating: PG	STAR WARS 5:15 pm & 8:00 pm Duration: 2 hrs 9 mins Rating: PG	STAR WARS 10:45 pm Duration: 1 hr 42 mins Rating: PG
--	---	---	---	--

Character Appearances

JOY Preludes 9:00 am & 10:00 am BOO Lobby Atrium (V) 9:15 am & 10:15 am DAISY DUCK Preludes 9:30 am, 5:15 pm & 10:00 pm NEEDLEMAN Deck 4, Balcony 9:30 am & 10:30 am SULLEY Lobby Atrium (V) 9:45 am & 10:45 am GEORGE Deck 4, Balcony 10:00 am & 11:00 am PETER PAN Preludes 11:00 am & 12:00 pm CAPTAIN HOOK Preludes 11:30 am & 12:30 pm GOOBY Preludes 1:00 pm, 2:00 pm & 5:45 pm MINNIE MOUSE Deck 4, Balcony 1:15 pm & 5:30 pm Preludes 7:30 pm & 9:30 pm	DONALD DUCK Preludes 1:30 pm & 8:00 pm Deck 4, Balcony - 4:30 pm QUEEN OF HEARTS Deck 4, Balcony - 1:45 pm TINKER BELL Lobby Atrium (V) 1:45 pm & 2:45 pm WHITE RABBIT Deck 4, Balcony - 2:15 pm GEPPETTO Preludes - 3:15 pm BELLE Deck 4, Balcony - 3:30 pm JIMINY CRICKET Preludes 3:45 pm & 4:45 pm PLUTO Deck 4, Balcony - 4:00 pm PINOCCHIO Preludes - 4:15 pm MICKEY MOUSE Deck 4, Balcony 5:00 pm, 7:15 pm, 7:45 pm, 8:15 pm & 9:30 pm CINDERELLA Lobby Atrium - 5:30 pm
--	---

(H) Hallway - (S) Starboard Side - (P) Port Side - (V) Vestibule

For details of daily Disney character appearances, refer to the character line on your Navigator Grid, or the digital character board in the Lobby Atrium.

IMPORTANT NUMBERS

Fire/Security: 7-3001
Medical Emergency: 7-3000
Health Center: 7-1923

SHIP DIRECTORY

YOUTH ACTIVITIES

DISNEY'S OCEANEER CLUB	DECK 5, MID	9:00 AM - 12:00 AM
DISNEY'S OCEANEER LAB	DECK 5, MID	9:00 AM - 12:00 AM
EDGE	DECK 13, MID	9:00 AM - 1:00 AM
VIBE	DECK 4, FWD	9:00 AM - 2:00 AM
IT'S A SMALL WORLD NURSERY	DECK 5, MID	9:00 AM - 11:30 PM

POOLS & MORE

* Children under 12 must have adult supervision in pool areas.

AQUADUCK	DECK 12, MID	9:00 AM - 10:00 PM
AQUALAB	DECK 12, AFT	9:00 AM - 6:00 PM
DONALD'S POOL	DECK 11, MID	8:30 AM - 10:30 PM
MICKEY'S POOL	DECK 11, MID	8:80 AM - 10:30 PM
MICKEY'S SLIDE	DECK 11, MID	9:00 AM - 6:00 PM
NEMO'S REEF	DECK 11, MID	9:00 AM - 6:00 PM
QUIET COVE POOL (18+)	DECK 11, FWD	8:00 AM - 11:00 PM
SATELLITE FALLS (18+)	DECK 13, FWD	6:00 AM - 8:00 PM

Please note, "selfie sticks" are not permitted in the pools or on the slides.

Complimentary pool vests are available for children to use in the pools onboard.
They are located on the pool deck.

RECREATION

GOLF/SPORTS SIMULATORS	DECK 13, AFT	9:00 AM - 6:00 PM
GOOFY GOLF	DECK 13, AFT	8:00 AM - 10:00 PM
GOOFY'S SPORTS DECK	DECK 13, AFT	8:00 AM - 6:00 PM
MIDSHIP DETECTIVE AGENCY	DECKS 2 & 5, MID	9:00 AM - 10:00 PM
PORT ADVENTURES DESK	DECK 5, MID	9:00 AM - 5:00 PM 7:00 PM - 8:30 PM
SENSES FITNESS CENTER (18+)	DECK 11, FWD	6:00 AM - 10:00 PM

GENERAL INFORMATION

ARR-CADE	DECK 11, AFT	24 HOURS
CONNECT@SEA	DECK 4, MID	9:00 AM - 12:00 PM 1:00 PM - 4:00 PM 7:00 PM - 10:00 PM
DISNEY VACATION CLUB	DECK 4, MID	9:00 AM - 11:00 AM 2:30 PM - 3:30 PM 5:30 PM - 10:00 PM
DISNEY VACATION PLANNING	DECK 4, MID	10:00 AM - 8:30 PM
GUEST SERVICES	DECK 3, MID	24 HOURS
HAIR BRAIDING	DECK 11, MID	9:00 AM - 9:30 PM
MEDICAL HEALTH CENTER	DECK 1, FWD	9:30 AM - 11:00 AM 4:30 PM - 7:00 PM
PORT SHOPPING DESK	DECK 4, MID	7:30 PM - 8:30 PM
PRELUDES	DECK 3, FWD	5:45 PM - 8:45 PM
SENSES SPA AND SALON	DECK 11, FWD	8:00 AM - 10:00 PM
SHUTTERS PHOTO GALLERY	DECK 4, MID	9:30 AM - 12:00 PM 9:30 PM - 11:00 PM
SHUTTERS DIGITAL	DECK 4, MID	9:30 AM - 12:00 PM 9:30 PM - 11:00 PM

SHOPPING

BIBBIDI BOBBIDI BOUTIQUE	DECK 5, MID	9:00 AM - 9:00 PM
MICKEY'S MAINSAIL	DECK 3, FWD	9:30 AM - 11:00 PM
QUACKS	DECK 11, MID	
SEA TREASURES	DECK 3, FWD	9:30 AM - 11:00 PM
VISTA GALLERY	DECK 4, MID	9:45 AM - 10:30 PM
WHITE CAPS	DECK 3, FWD	9:30 AM - 11:00 PM
WHOZITS & WHATZITS	DECK 11, MID	10:00 AM - 4:00 PM 7:30 PM - 10:00 PM

DINNER MENU

Animator's Palate : Pacific Rim Cuisine
Enchanted Garden : Continental Market Cuisine
Royal Court : French Cuisine
Dining Times: 5:45pm & 8:15pm

DRINK OF THE DAY

Bahama Mama (Alcoholic)
Coco Bali (Non Alcoholic)

WEATHER FORECAST

Today: Sunny
High: 72°F/22°C
Tomorrow: Partly Cloudy
High: 76°F/24°C

Evening Attire: Formal

DINING & LOUNGES

BREAKFAST

CABANAS CONTINENTAL	DECK 11, AFT	7:00 AM - 7:30 AM
CABANAS	DECK 11, AFT	7:30 AM - 11:30 AM
ROYAL COURT	DECK 3, MID	8:30 AM - 10:00 AM

LUNCH

CABANAS	DECK 11, AFT	11:45 AM - 2:15 PM
FILLMORE'S FAVORITES	DECK 11, MID	11:00 AM - 6:30 PM
LUIGI'S PIZZA	DECK 11, MID	11:00 AM - 6:30 PM
PALO BRUNCH (18+) (RESERVATIONS REQ. & NOM. FEE APPLIES)	DECK 12, AFT	10:00 AM - 12:30 PM
REMY (18+) (RESERVATIONS REQ. & NOM. FEE APPLIES)	DECK 12, AFT	11:30 AM - 12:30 PM
ROYAL COURT	DECK 3, MID	12:00 PM - 1:30 PM
TOW MATER'S GRILL	DECK 11, MID	11:00 AM - 11:00 PM

DINNER

ANIMATOR'S PALATE	DECK 3, AFT	5:45 PM & 8:15 PM
ENCHANTED GARDEN	DECK 2, MID	5:45 PM & 8:15 PM
ROYAL COURT	DECK 3, MID	5:45 PM & 8:15 PM
CABANAS TABLE SERVICE	DECK 11, AFT	6:30 PM - 8:30 PM
PALO (18+) (RESERVATIONS REQ. & NOM. FEE APPLIES)	DECK 12, AFT	6:00 PM - 8:30 PM
REMY (18+) (RESERVATIONS REQ. & NOM. FEE APPLIES)	DECK 12, AFT	6:00 PM - 8:30 PM

LATE NIGHT SNACKS

LA PIAZZA (18+)	DECK 4, AFT	8:00 PM - 11:45 PM
LUIGI'S PIZZA	DECK 11, MID	9:30 PM - 12:00 AM

ADDED FEATURES

BEVERAGE STATION	DECK 11, MID	24 HOURS
EYE SCREAM	DECK 11, MID	11:00 AM - 11:00 PM
ROOM SERVICE	DIAL 0	24 HOURS

ENTERTAINMENT - LOUNGES - BARS

Adults must be 21 and older to consume alcoholic beverages.

BON VOYAGE	DECK 3, MID	9:00 AM - 10:30 PM
COVE BAR (18+)	DECK 11, FWD	10:00 AM - 10:00 PM
COVE CAFE (18+)	DECK 11, FWD	6:30 AM - 12:00 AM
CURRENTS (18+)	DECK 13, FWD	10:00 AM - 11:30 PM
D LOUNGE	DECK 4, MID	SHOWTIMES
FROZONE TREATS	DECK 11, MID	10:00 AM - 6:00 PM
LA PIAZZA (18+ AFTER 9:00 P.M.)	DECK 4, AFT	12:00 PM - 12:00 AM
MERIDIAN (18+)	DECK 12, AFT	10:00 AM - 12:00 PM 5:00 PM - 12:00 AM
O'GILLS PUB (18+ AFTER 9:00 P.M.)	DECK 4, AFT	12:00 PM - 12:00 AM
OOH LA LA (18+)	DECK 4, AFT	5:30 PM - 12:00 AM
OUTLOOK	DECK 14, MID	
SKYLINE (18+)	DECK 4, AFT	6:00 PM - 12:30 AM
THE TUBE (18+ AFTER 9:00 P.M.)	DECK 4, AFT	7:00 PM - 8:30 PM 9:30 PM - 2:00 AM
VISTA CAFE	DECK 4, MID	7:00 AM - 11:00 PM
WAVES	DECK 12, AFT	10:00 AM - 6:00 PM

Public Health Advisory: Consuming raw or under-cooked meats, poultry, seafood, shellfish, or eggs may increase your risk for food borne illness, especially if you have certain medical condition.



GOOFY'S SPORTS Digital Simulators

Sports Simulator

(Basketball, Baseball, Hockey, Football or Soccer)\$13 / half hr, \$22 / hr

Golf Simulator

\$28 / half hr, \$49 / hr

Reservations can be made at the Port Adventures Desk, Deck 5, Midship or at the Simulators, Deck 13, Aft.