

PERSONAL NAVIGATOR

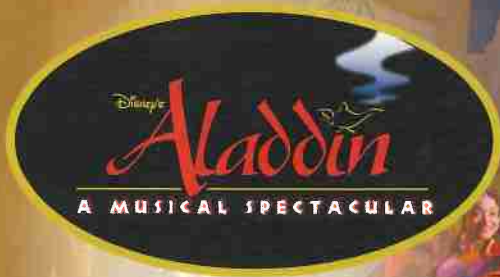


SUNDAY, FEBRUARY 5, 2017

Sunrise 7:01 am Sunset: 6:20 pm
Evening Attire: Formal

Today: Partly Sunny High: 70°F/21°C
Tomorrow: Partly Sunny High: 82°F/28°C

DAY AT SEA



A fast-paced, musical comedy based on the beloved animated film.

Aladdin, the "street rat" of Agrabah, meets a wise-cracking Genie, battles the evil Jafar, and falls in love with the beautiful and spirited Princess Jasmine. Disney storytelling at its best.



Assistance available at the entrance to the Walt Disney Theatre 30 minutes prior to show time.

WALT DISNEY THEATRE

Deck 3 & 4, Forward
6:15 pm & 8:30 pm

As a courtesy to all Guests, we kindly advise that the saving of seats is **not** permitted in the Walt Disney Theatre.

SUPERBOWL SUNDAY

Disney FANTASY Fun Facts

Tonnage: 130,000 Gross Tons

Height: 216 Feet

Length: 1115 Feet

Important Dates

Name Announcement: March 10, 2009

Steel Cutting: March 16, 2010

Keel Laying: February 11, 2011

Delivery: February 9, 2012

Almost four football fields in length, the Disney Fantasy is longer than the height of the Eiffel Tower in Paris (1,063 feet). She is also longer than the height of New York City's famous Chrysler building (1,047 feet).

The Disney Fantasy's Whistle

The Disney Fantasy's whistle, a prominent element of the "Sailing Away" deck party at the start of the cruise, is quite the musical talent. It's able to perform not just the first musical line of "When You Wish Upon a Star" but also the second line of the song ("makes no difference who you are") plus several measures of "Yo Ho (A Pirate's Life for Me)," "It's a Small World," "Be Our Guest," "Hi Diddle Dee Dee (An Actor's Life for Me)," "A Dream is a Wish." and "Do you want to build a Snowman".



CAPTAIN'S RECEPTION

Enjoy live music and a cocktail while meeting some of the ship's officers.

Lobby Atrium, Deck 3, Midship,
5:15 & 7:30 pm

Enjoy an exclusive photo opportunity with Captain Fabian at
5:30 & 7:30 pm, Lobby Atrium

Don't Miss:

Good Morning Disney Fantasy

Channel 5 - Repeated from 5:00 am - 12:00 pm

Tune in to channel 5 as your Cruise Director highlights the upcoming events and activities for the day.

Jack Jack's Incredible Diaper Dash

Lobby Atrium, Deck 3, Midship - 12:15 pm

Calling all baby cruisers! It's time to take to the mat to see who's the fastest crawler of the seven seas! Register your baby 15 minutes prior to the big race.

The Magic of Michael Finney

Walt Disney Theatre, Deck 3, Forward - 2:00 pm

Featuring the Magic of Michael Finney, as he entertains the entire family in this fun-filled show.

The Comedy & Ventriloquism of Lynn Trefzger (18+)

The Tube, Deck 4, Aft - 09:45 pm & 10:45 pm

Featuring the Comedy & Ventriloquism of Lynn Trefzger as she entertains you in this adult exclusive show.



Welcome Aboard Photo Raffle

Stop at Shutters today before 11:00 am and drop of your raffle ticket, for a chance to win a 10 Digital Photo Package worth \$149.95.

*Terms & Condition apply.

DINNER MENU

Animator's Palate : Pacific Rim Cuisine
Enchanted Garden : Continental Market Cuisine
Royal Court : French Cuisine

DRINK OF THE DAY

Bahama Mama (Alcoholic)
Coco Bali (Non-Alcoholic)

IMPORTANT NUMBERS

Fire/Security: 7-3001
Medical Emergency: 7-3000
Health Center: 7-1923

ADULT ACTIVITY HIGHLIGHTS



SENSES SPA FITNESS CLASSES & SEMINARS

Pure Form Pilates - Donald's Pool - 7:00 am
Fab Abs - Senses Spa & Salon - 7:45 am
Body Sculpt Boot Camp (Nom. Fee) - Senses Fitness Center - 8:30 am
Detox for Health & Weight Loss - Senses Spa & Salon - 10:30 am
Non-Surgical Facelift - Senses Spa & Salon - 11:30 am
Good Feet Seminar: Walking In Comfort - Senses Spa & Salon - 2:00 pm
Secrets to a Flatter Stomach - Senses Spa & Salon - 2:30 pm
Thermage Skin Tightening - Senses Spa & Salon - 3:15 pm
Tour De Cycle (Sign-Up Required) - Senses Fitness Center - 4:00 pm
Complimentary Footprint Analysis - Senses Spa & Salon - 5:00 pm

1820 SOCIETY: 2000'S MUSIC CHALLENGE

O'Gills Pub, Deck 4, Aft - 12:00 pm

Join your Cruise Staff as we navigate our way through the music of the 2000's.



1820 SOCIETY: MINI GOLF

Goofy Golf, Deck 13, Aft - 3:45 pm

Can you get a hole in one? Give it a try with some mini golf.

1820 SOCIETY: ICE CREAM SOCIAL

Frozone Treats, Deck 11, Midship - 9:45 pm

Join your fellow Society members for some ice cream and conversation.

ART OF THE THEME SHOW TOUR

Meridian, Deck 12, Aft - 9:00 am

Join us for a guided tour highlighting the design, Imagineering and artistry of the ship. This tour is reserved for Guests 18 and over.

SPORTS TRIVIA

O'Gills Pub, Deck 4, Aft - 10:45 am

Join us as we test your knowledge against your fellow Guests at our Sports Trivia.



ANYONE CAN COOK: SEA BASS

D Lounge, Deck 4, Midship - 2:15 pm

From our galley to yours. Join our chefs as they show you how to prepare delicious dishes. Today's Menu - Sea Bass.

SNIPPETS

The Tube, Deck 4, Aft - 10:15 pm

Join the crowd in this fast-paced audio challenge where we play a snippet and you have to guess it.

BEATLES TRIBUTE WITH SOUL DUO

La Piazza, Deck 4, Aft - 9:15 pm

Join Soul Duo as they play live for your listening pleasure.



FUN FOR ALL AGES HIGHLIGHTS



DISNEY ANIMATION: CREATING A CHARACTER

D Lounge, Deck 4, Midship - 9:45 am

Go behind the scenes at Walt Disney Animation Studios as Walt Disney himself talks about his most famous characters, then learn the basic techniques of drawing your favorite pals in this fun and interesting enrichment program.

DISNEY TRIVIA

La Piazza, Deck 4, Aft - 10:30 am

Navigate your way through a round of questions to test how much you really know about Disney.

TODDLER TIME

Outlook, Deck 14, Midship - 10:30 am & 5:00 pm

Join us for some fun activities that your toddler is sure to enjoy.



DIAMOND JACKPOT BINGO

Bingo Pre-Sales start at 11:00 am

D Lounge, Deck 4, Midship - 11:15 am

Join us for 4 cash prize games and your chance to win a diamond pendant! Everyone attending will also receive a voucher to collect a free Diamonds International charm bracelet! Complete the Big X in 20 numbers or less, and \$500 could be yours. If not we continue to play for the highest cash prize of the session! Pre-Sales start 15 minutes prior to the game.

PORT SHOPPING TALK

Buena Vista Theatre, Deck 4 & 5, Midship - 11:15 am

Join your Port Shopping Guide to learn about the incredible tax & duty free shopping ashore this cruise! Free charm bracelet for all in attendance and a raffle to win a diamond pendant!



DISNEY VACATION CLUB GROUP PREVIEW

D Lounge, Deck 4, Midship - 12:30 pm

The Tube, Deck 4, Aft - 4:15 pm

Want to learn more about taking magical vacations year after year? Please see a Disney Vacation Club representative on Deck 4, Midship, or call 7-2805 from your stateroom phone for more information about our interactive group presentation.

ULTIMATE DISNEY TRIVIA

La Piazza, Deck 4, Aft - 1:45 pm

Join us for the Ultimate test of your Disney Knowledge in this fun trivia.



CHIP-IT GOLF (12+)

Lobby Atrium, Deck 3, Midship - 3:30 pm

It's par for the course for our Guests 12 and older to compete on our special "greens" in this fun tournament.



\$5,000 MEGA JACKPOT SENSES SPA BINGO

Bingo Pre-Sales start at 4:00 pm

D Lounge, Deck 4, Midship - 4:15 pm

Don't miss your chance to take home big money! 4 CASH prize games and great raffle prizes to be won! Complete the fourth game in 46 numbers or less and win the \$5,000 Mega Jackpot! Plus get Spa Prizes that will pamper you, including a mini facial and massages all courtesy of the Senses Spa and Salon. Pre-Sales start 15 minutes prior to game.

YOUTH ACTIVITIES HIGHLIGHTS

DINE & PLAY

A convenience for families dining at 8:15 pm, our Youth Activities counselors will be available at 9:15 pm at the entrance of Royal Court, Enchanted Garden and Animator's Palate dining rooms to bring registered children to join the fun in the Youth Activity areas.



Deck 5, Midship (7-1440)
(3-12 years old)

9:00 am - 12:00 am

MICKEY'S PUZZLE PLAYTIME

11:30 am

Come and play with Mickey & friends as they share their favorite games, puzzles and dances!

TOY STORY BOOT CAMP

3:15 pm

Join Corporal Green in our own version of boot camp as we learn how to have fun - The Toy Story way!



Deck 5, Midship (7-1445)
(3-12 years old)

9:00 am - 12:00 am

GET THE HOOK

3:15 pm

A villainous villain has stolen Captain Hook's prized golden hook. Become a member of the Top Deck Detective Agency and help solve the clues to retrieve Hook's hook.

PISTON CUP CHALLENGE

10:00 pm

It's Dinoco time and you're part of the pit crew! Design your own race car and see if you've got what it takes to end up in the winner's circle!



Deck 13, Midship (7-9743)
(11-14 years old)

9:00 am - 1:00 am

BRAINS AND BRAWNS

2:30 pm

You will compete against each other to solve clues, take part in physical challenges, and reach the finish first.

MAGIC SHOW

7:30 pm

The Magnificent Magician will demonstrate to you some of the best known magic tricks on the sea.



Entrance on Deck 4, Forward (7-9418)
(14-17 years old)

9:00 am - 2:00 am

ZOMBIFIED

12:00 pm

A big movie producer is looking for zombies to help him film the finale to his latest masterpiece, Zombified.

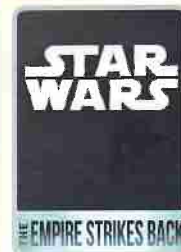
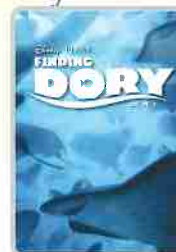
DREAM NOW! SEA HOW! - CREATE IT

3:30 pm

Imagine a job where your days are spent dreaming up plots, characters, designs or mechanics that only come from one place. . . In this VIP Experience you will meet one of the creative minds with Disney. A special Guest will ignite your imagination and answer your questions.

BUENA VISTA THEATRE

Deck 4 & 5, Midship
Today's Movies



8:30 am
Duration:
1 hr 53 mins
Rating: PG

12:45 pm
Duration:
1 hr 45 mins
Rating: PG

3:00 pm
Duration:
2 hrs 4 mins
Rating: PG



5:30 pm & 8:00 pm
Duration: 1 hr 53 mins
Rating: PG

10:30 pm
Duration: 1 hr 55 mins
Rating: PG-13

SO YOU THINK YOU KNOW YOUR FAMILY?

FAMILY GAME SHOW

This fun-filled family game show is always full of surprises. Find out how well you know, or don't know your family!

**D Lounge,
Deck 4, Midship,
7:30 pm**



ADULT VARIETY ACT

Featuring the Ventriloquism & Comedy of Lynn Trefzger, as she entertains you in this adult exclusive show.

**The Tube (18+),
Deck 4, Aft,
9:45 pm & 10:45 pm**

YOUTH ACTIVITIES OPEN HOUSE

Open House is an opportunity for all to come and participate in a variety of exciting activities and free time in the Oceaneer Club, Oceaneer Lab, it's a small world nursery, Vibe and Edge throughout the cruise. During these times secured programming will still be offered in the other venue for those looking to check their children into care.

Disney's Oceaneer Lab: 7:00 pm - 8:30 pm

Edge: 9:00 am - 10:00 am & 6:00 pm - 7:30 pm
Vibe: 9:00 am - 10:00 am & 7:30 pm - 9:00 pm

MORE TO ENJOY WHILE ONBOARD



EASTERN CARIBBEAN

Disney Cruise Line offers a variety of sailings to exotic ports in the Caribbean, including port of Tortola, in the British Virgin Islands. Most voyages even include a stop at Disney Castaway Cay. Visit the Disney Vacation Planning desk, Deck 4, Midship, for more information. Disney Vacation Planning tends to get busy on the last day of sailing. Don't miss the opportunity to plan your next Disney vacation.



DISNEY VACATION CLUB® GROUP PREVIEW

Want to learn more about taking magical vacations year after year? Please see a Disney Vacation Club representative on Deck 4, Midship, or call 7-2805 from your stateroom phone for more information about our interactive group presentation.



PORT SHOPPING INFORMATION

Join your Port Shopping Guides, Rita, to learn about the incredible tax & duty free shopping ashore this cruise. Everything from diamonds to t-shirts, Rolex to rum-cake! Port Shopping Talk, Buena Vista Theatre, Deck 4, Midship, 11:15 am. FREE Charm Bracelet for everyone who attends! Raffle to win OVER \$1000 in prizes & giveaways! Later, join Rita as they give insider tips on shopping for gemstones in the Caribbean at the Diamond & Gemstone Seminar, The Tube, Deck 4, Aft, 3:00 pm.

Connect@Sea

We are now offering a NEW and improved Internet service to stay connected on your cruise like no other in the industry! Internet packages range from \$0.25 per MB - \$89.00 (1000 MB package). For more information contact your Connect@Sea Expert or Guest Services onboard.

ONBOARD AIRLINE CHECK IN

Stop by the Guest Services Desk, Deck 3, Midship to find out about enrolling in our Onboard Airline Check In Service.



CASTAWAY CAY 5K REGISTRATION (10+)

Sign up today for the Castaway Cay 5K! Please visit the Port Adventures Desk or the Guest Services Desk to register at anytime prior to our arrival at Disney Castaway Cay. Please note that runners must be 10 years of age or older to participate. Additionally, no strollers, motorized wheelchairs or scooters, are permitted to participate in the Castaway Cay 5K.



MIDSHIP DETECTIVE AGENCY

The puppies from 101 Dalmatians have gone missing! Use your special detective "badge" to track down the puppies and catch the villain who took them. Decks 2 & 5, Midship.



The best way to explore our ports of call is through the eyes of a Port Adventure. Be adventurous and climb up Dunn's River Falls or explore the Green Grotto Caves in Falmouth. Why not swim with stingrays in Grand Cayman or explore the ruins in Cozumel.

Visit the **Port Adventures Desk, Deck 5, Midship**, for more information.

SHOPPING

BIBBIDI BOBBIDI BOUTIQUE

Young Princesses and Princes can get ready for a formal evening with a makeover at the Bibbidi Bobbidi Boutique. Make your reservations by visiting Bibbidi Bobbidi Boutique, Deck 5, Midship or dialing extension 7-9438. Limited space available.

STAR WARS DAY AT SEA

Take home a piece of the saga with your very own Star Wars Day at Sea event logo pin. When you spend \$25.00 or more in the shops, you can purchase the event logo pin for \$6.99. This item is available while supplies last Deck 3, Forward.

THOMAS KINKADE: HIDDEN CHARACTER CHALLENGE!

Known as the "Painter of Light," Thomas Kinkade is one of Disney's most celebrated artists having created an array of enchanting artwork. Stop by the Vista Gallery today to view his unique collection of paintings featuring some of your favorite Disney characters! Also, take the time to try and find all of the hidden Disney characters scattered throughout his paintings. Are you up to the challenge? Deck 4, Midship.

ALEX AND ANI AVAILABLE ONBOARD!

Perfect for the Disney fan with a flair for fashion, head to White Caps where you'll find the stylish bangles by Alex and Ani featuring Disney-inspired charms such as the specially designed Disney Cruise Line charm. Deck 3, Forward.

THE PIRATES LEAGUE

Shiver me timbers! Pirates are invading the Bibbidi Bobbidi Boutique tomorrow and are looking to transform you into a swashbuckling pirate to join their crew. Make your reservations by visiting Bibbidi Bobbidi Boutique, Deck 5, Midship or dialing extension 7-9438. Limited space available.



Would you like to lose between 1 - 8 inches?
Speed up your metabolism?
Firm your muscle tone?
Improve appearance of cellulite?
If so, then Ionithermie is the best treatment for you!
50 minutes for \$155

Senses Spa & Salon, Deck 11, Forward, Extension 7-1465



PANDORA

Featuring hand-finished .925 sterling silver and 14K gold charms inspired by some of Disney's most beloved characters.



WHITE CAPS | DECK 3, FORWARD



FORMAL PORTRAITS TONIGHT!

Now that the family is dressed up and ready to enjoy the evening, capture the memories in your formal attire by visiting our professional portrait studios located in the Lobby Atrium, Deck 3, Midship.

5:15 pm - 6:00 pm
7:15 pm - 8:30 pm
9:30 pm - 10:15 pm

**Please note that photos are available for viewing on our interactive photo kiosks approximately five hours after being taken and are only available for purchase during this cruise. Photo sizes are preset and cannot be changed.*

IMPORTANT INFORMATION

Security Notice

All Guests (including children) who wish to disembark the ship are required to present their Key to the World card at the gangway. A photo ID is also required for those Guests who are 18 years of age or older. Guests under the age of 18 are required to have a parent, guardian or other responsible adult sign an authorization form at the Guest Service Desk if they wish to go ashore unaccompanied or with any adult from another stateroom.

Insect Repellent Advisory

Protect against mosquito bites and related illnesses when going ashore. Insect repellent is available for purchase in White Caps. When using both sunscreen and insect repellent, use sunscreen first and apply insect repellent on top of sunscreen.

Cold and Flu Reminder

Please wash hands frequently and thoroughly, particularly before meals. Contact the Health Center by dialing 7-1923, should anyone in your party become ill.

Corridor Quiet Hours

As a courtesy to all our Guests, please recognize quiet hallway hours from 10:00 pm til 8:00 am.

Inclement Weather

For the safety of all Guests, outdoor events may be changed due to unforeseen weather conditions.

Environmental Message

With Disney's commitment to the Environment, please refrain from throwing anything over the Ship's side. Thank you!

No Reserved Seats Policy

As a courtesy to all our Guests, we kindly advise that the saving of seats is not permitted in the Walt Disney Theatre, and the saving of the sun loungers is not permitted on Deck 11, 12, and 13. Items left unattended will be returned to lost and found at Guest Services, Deck 3 Midship.

Smoking

For the comfort of our Guests, the following areas are designated as smoking areas:
Deck 13, forward, port side by Currents
Deck 12, aft, port side outdoor area that is accessible through the Meridian Lounge
Deck 4, aft, port side from 6:00 pm to 6:00 am (only all of Deck 4 is non-smoking from 6:00 am to 6:00 pm)
Smoking is prohibited inside all Guest staterooms and on stateroom verandahs. Guests found smoking in their staterooms or on their verandahs will be charged a \$250 stateroom recovery fee. Electronic cigarettes may only be used in designated smoking areas.

Walt Disney Theatre

Theatrical performances may use artificial fog, strobe lights, pyrotechnics and other special effects. For the safety of our performers and the comfort of those around you, the use of any photography, video recording device or any electronic equipment is prohibited.

Verandah Safety

Please do not leave any combustible materials on your balcony when not present in your stateroom for safety reasons.

Morning	8:30	8:45	9:00	9:15	9:30	9:45	10:00	10:15	10:30	10:45	11:00	11:15	11:30	11:45	12:00	12:15	12:30	12:45	1:00	1:15	1:30																	
FUNNEL VISION	A Goofy Movie (G) Open Captioning Funnel Vision					Frozen (PG) Open Captioning Funnel Vision					Inside Out (PG) Open Captioning Funnel Vision																											
BUENA VISTA THEATRE	Family Movie Fun Time: Moana (PG) Duration: 1 Hour 53 Minutes										Port Shopping Talk					Finding Dory (PG) 3D Duration: 1 Hour 45 Minutes																						
CHARACTERS			Boo Lobby Atrium (V)		Sulley Lobby Atrium (V)		Boo Lobby Atrium (V)		Sulley Lobby Atrium (V)		George Dk 4, Balcony		Needleman Dk 4, Balcony		George Dk 4, Balcony		Needleman Dk 4, Balcony		White Rabbit Dk 4, Balcony																			
		Joy Preludes		Stitch Preludes		Joy Preludes		Stitch Preludes		Peter Pan Preludes		Cpt. Hook Preludes		Peter Pan Preludes		Cpt. Hook Preludes		Max Preludes		Goofy Preludes																		
FUN FOR ALL AGES				Crafts: 3D Crafts La Piazza					Disney Trivia La Piazza		Bingo Pre Sales		Diamond Jackpot BINGO D Lounge																									
	Interdenominational Service Outlook					Walking Ship Tour Preludes			Toddler Time Outlook			Crafts: Animal Masks La Piazza			Disney Vacation Club Group Preview D Lounge			Crafts: Origami Favorites O'Gills Pub																				
ADULTS	Friends of Bill W. Outlook	Art of The Theme Show Tour Meridian					Pub Quiz O'Gills Pub			Sports Trivia O'Gills Pub		Port Shopping Talk Buena Vista Theatre			1820 Society: 2000's Music Challenge O'Gills Pub			Cruisin' Solo Lunch Royal Court		Watch Seminar La Piazza																		
	Boot Camp (Nom. Fee) Senses Fitness Center														TV Tunes Trivia O'Gills Pub					Selkie LIVE! Quiet Cove																		
VIBE 14-17 YEARS OLD		Youth Activities Open House					Open for Teens			Coffee Break			Disney Scene It			Zombified																						
EDGE 11-14 YEARS OLD		Youth Activities Open House					Four Square						That's Hilarious			Marshmallow Olympics			Trivia Challenge																			
OCEANEER LAB 3-12 YEARS OLD		Human Bingo		Magic PlayFloor				Super Sloppy Science			Stitch's Adventure Squad			Lunch						Wacky Relays																		
OCEANEER CLUB 3-12 YEARS OLD		Pre-School Fun (3-5 Years Old)					Magic Show			Memory Wall		Mickey's Puzzle Playtime																										
		Little Einstein's Adventure																																				
Afternoon	1:45	2:00	2:15	2:30	2:45	3:00	3:15	3:30	3:45	4:00	4:15	4:30	4:45	5:00	5:15	5:30	5:45	6:00	6:15	6:30	6:45																	
FUNNEL VISION		Big Hero 6 (G) Open Captioning Funnel Vision										Brother Bear (G) Open Captioning Funnel Vision					NFL: Super Bowl Patriots vs. Falcons Funnel Vision (Subject to Satellite Availability)																					
BUENA VISTA THEATRE		Star Wars: Episode V. The Empire Strikes Back (PG) Open Captioning Duration: 2 Hours 4 Minutes										Moana (PG) Open Captioning Duration: 1 Hour 53 Minutes																										
CHARACTERS	Tinker Bell Lobby Atrium (V)		White Rabbit Dk 4, Balcony		Tinker Bell Lobby Atrium (V)		Geppetto Dk 4, Balcony		Jiminy Dk 4, Balcony		Pinocchio Dk 4, Balcony		Geppetto Dk 4, Balcony		Jiminy Dk 4, Balcony		Pinocchio Dk 4, Balcony																					
		Max Preludes		Goofy Preludes		Pluto Preludes		Donald Preludes		Pluto Preludes		Mickey Preludes		Minnie Preludes		Goofy Preludes																						
FUN FOR ALL AGES							Disney Tunes Trivia La Piazza				Bingo Pre Sales		\$5,000 Mega Jackpot Senses Spa BINGO D Lounge			Crafts: Paper Plane Making The Tube			Captain's Welcome Reception Lobby Atrium																			
	Ultimate Disney Trivia La Piazza	Family Crafts La Piazza					Family Crafts La Piazza			Disney Vacation Club Group Preview The Tube			Toddler Time Outlook			Family Crafts D Lounge																						
ADULTS	Brain teasers Trivia O'Gills Pub						Diamond & Gemstone Seminar The Tube		1820 Society: Mini Golf Goofy Golf		Movie Quotes Trivia O'Gills Pub		Live Piano with Clara Oman La Piazza			NFL: Super Bowl New England Patriots vs. Atlanta Falcons O'Gills Pub (Subject to Satellite Availability)																						
		Dive into DJ'ing					Dream Now! Sea Howl - Create It				Marshmallow Olympics			Foosball Tournament			Super Bowl Kick Off Party																					
VIBE 14-17 YEARS OLD	Zombified																																					
EDGE 11-14 YEARS OLD	Craft Corner	Brains and Brawns								Anyone Can Cook: Cookies			Sports Deck Fun			Youth Activities Open House																						
OCEANEER LAB 3-12 YEARS OLD		Anyone Can Cook					Get the Hook			Four Square			Around the World in 7 days			Dinner																						
OCEANEER CLUB 3-12 YEARS OLD																																						
		Cruisin' with Crush					Scavenger Hunt			Toy Story Boot Camp			Tinker Bell's Talent Show																									
Evening	7:00	7:15	7:30	7:45	8:00	8:15	8:30	8:45	9:00	9:15	9:30	9:45	10:00	10:15	10:30	10:45	11:00	11:15	11:30	11:45	12:00																	
FUNNEL VISION	NFL: Super Bowl New England Patriots vs. Atlanta Falcons Funnel Vision (Subject to Satellite Availability)															Guardians of the Galaxy (PG-13) Open Captioning Funnel Vision																						
BUENA VISTA THEATRE		Moana (PG) Duration: 1 Hour 53 Minutes										Dr. Strange (PG-13) 3D Duration: 1 Hour 55 Minutes																										
CHARACTERS		Mickey Dk 4, Balcony		Minnie Preludes		Mickey Dk 4, Balcony		Donald Preludes		Mickey Dk 4, Balcony		Minnie Preludes		Mickey Dk 4, Balcony		Minnie Preludes																						
		Chip & Dale Lobby Atrium (V)		Tiana Lobby Atrium (V)		Chip & Dale Lobby Atrium (V)				Goofy Lobby Atrium (V)		Pluto Lobby Atrium (V)				Daisy Lobby Atrium (V)																						
FUN FOR ALL AGES												Formal Night After Party D Lounge																										
		Captain's Welcome Reception Lobby Atrium					Family Crafts D Lounge					Classic Jazz with Fine Whines Lobby Atrium																										
ADULTS		Live Piano with Clara Oman La Piazza										Club DJ The Tube				The Comedy & Ventriloquism LYNN IREFZGER The Tube		Snippets The Tube	The Comedy & Ventriloquism LYNN IREFZGER The Tube	Going Underground with Club DJ J Alan The Tube																		
		NFL: Super Bowl New England Patriots vs. Atlanta Falcons O'Gills Pub (Subject to Satellite Availability)										Beatles Tribute La Piazza								Live Music with Soul Duo La Piazza																		
VIBE 14-17 YEARS OLD		Youth Activities Open House					Pump It Up					Bring It!					Gender Wars																					
EDGE 11-14 YEARS OLD	Open House	Magic Show				Tween Choice				Video Game Challenge				Pictionary				Gender Wars																				
OCEANEER LAB 3-12 YEARS OLD		Youth Activities Open House										Lights, Camera, Improv!					Piston Cup Challenge																					
		Anyone Can Cook																																				
OCEANEER CLUB 3-12 YEARS OLD		Dress Up Fun					Once Upon a Time					Magic PlayFloor					Pluto's Pajama Party																					

Symbol for activities that will be repeated during the cruise



FOLD

Fold along the dotted lines and take me with you so you don't miss any of the fun!

FOLD

YOUTH ACTIVITIES OPEN HOUSE
A non-secured program with activities for families, adults and children to enjoy together.



SUNDAY, FEBRUARY 5, 2017 - DAY AT SEA

BUENA VISTA THEATRE

Deck 4 & 5, Midship



3D

3D

8:30 am Duration: 1 hr 53 mins Rating: PG	12:45 pm Duration: 1 hr 45 mins Rating: PG	3:00 pm Duration: 2 hrs 4 mins Rating: PG	5:30 pm & 8:00 pm Duration: 1 hr 53 mins Rating: PG	10:30 pm Duration: 1 hr 55 mins Rating: PG-13
--	---	--	--	--

Character Appearances

JOY Preludes 9:00 am & 10:00 am	PLUTO Preludes 3:00 pm & 4:00 pm Lobby Atrium (V) - 9:45 pm
BOO Lobby Atrium (V) 9:15 am & 10:15 am	GEPPETTO Deck 4, Balcony 3:15 pm & 4:45 pm
STITCH Preludes 9:30 am & 10:30 am	DONALD DUCK Preludes 3:30 pm, 8:00 pm & 9:45 pm
SULLEY Lobby Atrium (V) - 9:45 am & 10:45 am	JIMINY CRICKET Deck 4, Balcony 3:45 pm & 5:15 pm
PETER PAN Preludes 11:00 am & 12:00 pm	PINOCCHIO Deck 4, Balcony 4:15 pm & 5:45 pm
GEORGE Deck 4, Balcony 11:15 am & 12:15 pm	MICKEY MOUSE Preludes - 4:30 pm Deck 4, Balcony 7:15 pm, 7:15 pm, 7:45 pm, 8:15 pm, 9:30 pm & 10:00 pm
CAPTAIN HOOK Preludes 11:30 am & 12:30 pm	MINNIE MOUSE Preludes 5:00 pm, 7:30 pm, 9:15 pm & 10:15 pm
NEEDLEMAN Deck 4, Balcony 11:45 am & 12:45 pm	CHIP & DALE Lobby Atrium (V) 7:15 pm & 8:15 pm
MAX Preludes 1:00 pm & 2:00 pm	PRINCESS TIANA Lobby Atrium (V) - 7:45 pm
WHITE RABBIT Deck 4, Balcony 1:15 pm & 2:15 pm	DAISY DUCK Lobby Atrium (V) - 10:15 pm
GOOBY Preludes 1:30 pm, 2:30 pm & 5:30 pm Lobby Atrium (V) - 9:15 pm	
TINKER BELL Lobby Atrium (V) 1:45 pm & 2:45 pm	

(H) Hallway - (S) Starboard Side - (P) Port Side - (V) Vestibule

For details of daily Disney character appearances, refer to the character line on your Navigator Grid, or the digital character board in the Lobby Atrium.

IMPORTANT NUMBERS

Fire/Security: 7-3001
Medical Emergency: 7-3000
Health Center: 7-1923

SHIP DIRECTORY

YOUTH ACTIVITIES

DISNEY'S OCEANEER CLUB	DECK 5, MID	9:00 AM - 12:00 AM
DISNEY'S OCEANEER LAB	DECK 5, MID	9:00 AM - 12:00 AM
EDGE	DECK 13, MID	9:00 AM - 1:00 AM
VIBE	DECK 4, FWD	9:00 AM - 2:00 AM
IT'S A SMALL WORLD NURSERY	DECK 5, MID	9:00 AM - 11:30 PM

POOLS & MORE

* Children under 12 must have adult supervision in pool areas.

AQUADUCK	DECK 12, MID	9:00 AM - 10:00 PM
AQUALAB	DECK 12, AFT	9:00 AM - 6:00 PM
DONALD'S POOL	DECK 11, MID	9:00 AM - 10:00 PM
MICKEY'S POOL	DECK 11, MID	9:00 AM - 10:00 PM
MICKEY'S SLIDE	DECK 11, MID	9:00 AM - 6:00 PM
NEMO'S REEF	DECK 11, MID	9:00 AM - 6:00 PM
QUIET COVE POOL (18+)	DECK 11, FWD	8:00 AM - 11:00 PM
SATELLITE FALLS (18+)	DECK 13, FWD	6:00 AM - 8:00 PM

Please note, "selfie sticks" are not permitted in the pools or on the slides.

Complimentary pool vests are available for children to use in the pools onboard.
They are located on the pool deck.

RECREATION

GOLF/SPORTS SIMULATORS	DECK 13, AFT	9:00 AM - 6:00 PM
GOOFY GOLF	DECK 13, AFT	8:00 AM - 10:00 PM
GOOFY'S SPORTS DECK	DECK 13, AFT	8:00 AM - 6:00 PM
MIDSHIP DETECTIVE AGENCY	DECKS 2 & 5, MID	9:00 AM - 10:00 PM
PORT ADVENTURES DESK	DECK 5, MID	9:00 AM - 5:00 PM 7:00 PM - 8:30 PM
SENSES FITNESS CENTER (18+)	DECK 11, FWD	6:00 AM - 10:00 PM

GENERAL INFORMATION

ARR-CADE	DECK 11, AFT	24 HOURS
CONNECT@SEA	DECK 4, MID	9:00 AM - 12:00 PM 1:00 PM - 4:00 PM 7:00 PM - 10:00 PM
DISNEY VACATION CLUB	DECK 4, MID	9:00 AM - 11:00 AM 2:30 PM - 10:00 PM
DISNEY VACATION PLANNING	DECK 4, MID	10:00 AM - 8:30 PM
GUEST SERVICES	DECK 3, MID	24 HOURS
HAIR BRAIDING	DECK 11, MID	9:00 AM - 9:30 PM
MEDICAL HEALTH CENTER	DECK 1, FWD	9:30 AM - 11:00 AM 4:30 PM - 7:00 PM
PORT SHOPPING DESK	DECK 4, MID	7:30 PM - 8:30 PM
PRELUDES	DECK 3, FWD	1:30 PM - 2:30 PM 5:45 PM - 8:45 PM
SENSES SPA AND SALON	DECK 11, FWD	8:00 AM - 10:00 PM
SHUTTERS PHOTO GALLERY	DECK 4, MID	9:30 AM - 12:00 PM 7:30 PM - 11:00 PM
SHUTTERS DIGITAL	DECK 4, MID	9:30 AM - 12:00 PM 7:30 PM - 11:00 PM

SHOPPING

BIBBIDI BOBBIDI BOUTIQUE	DECK 5, MID	9:00 AM - 9:00 PM
MICKEY'S MAINSAIL	DECK 3, FWD	9:30 AM - 11:00 PM
SEA TREASURES	DECK 3, FWD	9:30 AM - 11:00 PM
VISTA GALLERY	DECK 4, MID	9:45 AM - 10:30 PM
WHITE CAPS	DECK 3, FWD	9:30 AM - 11:00 PM
WHOZITS & WHATZITS	DECK 11, MID	10:00 AM - 4:00 PM 7:30 PM - 10:00 PM

DINNER MENU

Animator's Palate: Pacific Rim Cuisine
Enchanted Garden: Continental Market Cuisine
Royal Court: French Cuisine
Dining Times: 5:45pm & 8:15pm

DRINK OF THE DAY

Bahama Mama (Alcoholic)
Coconut Balm (Non-Alcoholic)

WEATHER FORECAST

Today: Partly Sunny
High: 72 F/22 C
Tomorrow: Sunny
High: 76 F/24 C

Evening Attire: Formal

DINING & LOUNGES

BREAKFAST

CABANAS CONTINENTAL	DECK 11, AFT	7:00 AM - 7:30 AM
CABANAS	DECK 11, AFT	7:30 AM - 11:30 AM
ROYAL COURT	DECK 3, MID	8:30 AM - 10:00 AM

LUNCH

CABANAS	DECK 11, AFT	11:45 AM - 2:15 PM
FILLMORE'S FAVORITES	DECK 11, MID	11:00 AM - 6:30 PM
LUIGI'S PIZZA	DECK 11, MID	11:00 AM - 6:30 PM
PALO BRUNCH (18+) (RESERVATIONS REQ. & NOM. FEE APPLIES)	DECK 12, AFT	10:00 AM - 12:30 PM
ROYAL COURT	DECK 3, MID	12:00 PM - 1:30 PM
TOW MATER'S GRILL	DECK 11, MID	11:00 AM - 11:00 PM

DINNER

ANIMATOR'S PALATE	DECK 3, AFT	5:45 PM & 8:15 PM
ENCHANTED GARDEN	DECK 2, MID	5:45 PM & 8:15 PM
ROYAL COURT	DECK 3, MID	5:45 PM & 8:15 PM
CABANAS TABLE SERVICE	DECK 11, AFT	6:30 PM - 8:30 PM
PALO (18+) (RESERVATIONS REQ. & NOM. FEE APPLIES)	DECK 12, AFT	6:00 PM - 8:30 PM
REMY (18+) (RESERVATIONS REQ. & NOM. FEE APPLIES)	DECK 12, AFT	6:00 PM - 8:30 PM

LATE NIGHT SNACKS

LA PIAZZA (18+)	DECK 4, AFT	10:45 PM - 11:45 PM
LUIGI'S PIZZA	DECK 11, MID	9:30 PM - 12:00 AM

ADDED FEATURES

BEVERAGE STATION	DECK 11, MID	24 HOURS
EYE SCREAM	DECK 11, MID	11:00 AM - 11:00 PM
ROOM SERVICE	DIAL 0	24 HOURS

ENTERTAINMENT - LOUNGES - BARS

Adults must be 21 and older to consume alcoholic beverages.

BON VOYAGE	DECK 3, MID	8:00 AM - 11:00 PM
COVE BAR (18+)	DECK 11, FWD	9:30 AM - 10:00 PM
COVE CAFE (18+)	DECK 11, FWD	6:30 AM - 12:00 AM
CURRENTS (18+)	DECK 13, FWD	10:00 AM - 11:00 PM
D LOUNGE	DECK 4, MID	SHOWTIMES
FROZONE TREATS	DECK 11, MID	10:00 AM - 6:00 PM
LA PIAZZA (18+ AFTER 9:00 P.M.)	DECK 4, AFT	12:00 PM - 12:00 AM
MERIDIAN (18+)	DECK 12, AFT	10:00 AM - 12:00 AM 5:00 PM - 12:00 AM
O'GILLS PUB (18+ AFTER 9:00 P.M.)	DECK 4, AFT	12:00 PM - 12:00 AM
OQH LA LA (18+)	DECK 4, AFT	5:30 PM - 12:00 AM
OUTLOOK	DECK 14, MID	
SKYLINE (18+)	DECK 4, AFT	5:30 PM - 12:30 AM
THE TUBE (18+ AFTER 9:00 P.M.)	DECK 4, AFT	7:00 PM - 8:30 PM 9:30 PM - 2:00 AM
VISTA CAFE	DECK 4, MID	7:00 AM - 11:00 PM
WAVES	DECK 12, AFT	10:00 AM - 6:00 PM

Public Health Advisory: Consuming raw or under-cooked meats, poultry, seafood, shellfish, or eggs may increase your risk for food borne illness, especially if you have certain medical condition.

GOOFY'S SPORTS

Digital Simulators

Sports Simulator
(Basketball, Baseball, Hockey, Football or Soccer) \$13 / half hr, \$22 / hr

Golf Simulator
\$28 / half hr, \$49 / hr

Reservations can be made at the Port Adventures Desk, Deck 5, Midship or at the Simulators, Deck 13, Aft.