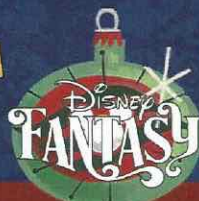


PERSONAL NAVIGATOR



TUESDAY, DECEMBER 27, 2016

GRAND CAYMAN, CAYMAN ISLANDS

Sunrise: 6:57 am Sunset: 5:56 pm

Evening Attire: Cruise Casual

All Ashore: Please Refer to Tender Letter

Last Tender: 5:30 pm

Today: Clear Skies High: 74°F/23°C

Tomorrow: Partly Sunny High: 72°F/22°C



On the eve of their graduation, three best friends go on a magical journey down the wishing well. A host of Disney characters help them discover the connection between children who are becoming adults, and adults who stay in touch with being a kid at heart.

WALT DISNEY THEATRE

Deck 3 & 4, Forward

6:15 pm & 8:30 pm

As a courtesy to all Guests, we kindly advise that the saving of seats is **not** permitted in the Walt Disney Theatre.



Assistance available at the entrance to the Walt Disney Theatre 30 minutes prior to show time.

Grand Cayman Port Information

The Cayman Islands were first sighted by European explorers in 1503, in a wayward voyage headed by Christopher Columbus. Though the two smaller islands were discovered on this fateful trip, the largest of them, Grand Cayman, would escape attention by sailors until 1655, when the area was claimed by the British. For centuries from the time of their discovery, the Cayman Islands would provide a place for ships to come ashore and rest on their journeys into the Caribbean. Crewmen on these ships would routinely replenish themselves on the meat provided by the native population of turtles.

By the 19th century, Grand Cayman was overtaken by pirates. It would take political upheaval and the establishment of a local government under British rule to transform the island into what it is today.

Discover a place that—once a welcome refuge for buccaneers—is today a treasured tourist hotspot. From sparkling surf to the bounty of local shops, whatever your pleasure, you'll find it here.

DOCKING - Please refer to Tender Letter

The ship anchors outside of the port and Guests take a tender to the dock. Tenders are small boats that provide transportation between the ship and the shore. Guests with special needs/disabilities wishing to leave the ship should check with Guest Services for accessible gangways.

SO YOU THINK YOU KNOW YOUR FAMILY?

FAMILY GAME SHOW

This fun-filled family game show is always full of surprises. Find out how well you know, or don't know your family!

D Lounge,
Deck 4, Midship,
10:15 pm

Don't Miss:

Good Morning Disney Fantasy

Channel 5 - Repeated from 5:00 am - 12:00 pm

Tune in to channel 5 as your Cruise Director highlights the upcoming events and activities for the day.

Wake up with Disney Junior

D Lounge, Deck 4, Midship - 8:30 am

What happens when you experience unlimited fun with your favorite Disney Junior shows? You get an exciting dance party designed especially for preschoolers ages seven and under.

Chip-It Golf (12+)

Lobby Atrium, Deck 3, Midship - 4:00 pm

It's par for the course for our Guests 12 and older to compete on our special "greens" in this fun tournament.

Religious Services

Catholic Mass

Buena Vista Theatre, Deck 4 & 5, Midship - 8:30 am

Hanukkah Service

Cabanas, Deck 11, Aft - 5:15 pm



Please check your tour tickets for meeting times and locations. Visit the Port Adventures desk, Deck 5, Midship for any questions.

DINNER MENU

Animator's Palate : Pacific Rim Cuisine
Enchanted Garden : Continental Market Cuisine
Royal Court : French Cuisine

DRINK OF THE DAY

Yellow Bird (Alcoholic)
Lava Smoothie (Non-Alcoholic)

IMPORTANT NUMBERS

Fire/Security: 7-3001
Medical Emergency: 7-3000
Health Center: 7-1923

ADULT ACTIVITY HIGHLIGHTS

SENSES SPA FITNESS CLASSES & SEMINARS

Sunrise Stretch - Donald's Pool - 7:00 am
Body Sculpt Boot Camp (Nom. Fee) - Senses Fitness Center - 8:30 am
Complimentary Walk-In Facial Rejuvenation
Consultations - Senses Spa & Salon - 9:00 am
CoolSculpting - One Treatment for a Slimmer You - Senses Spa & Salon - 9:15 am
Pure Form Pilates - Senses Fitness Center - 4:00 pm
Complimentary Footprint Analysis - Senses Spa & Salon - 5:00 pm



TASTING CLASSES

Mixology (21+) - The Tube - 4:00 pm
Martini Tasting (21+) - Meridian - 4:00 pm
 Please make reservations for tastings at Guest Services for a nominal fee.
 Tasting Seminars are only for Guests 21 and older.



1820 SOCIETY: ICE CREAM SOCIAL

Frozone Treats, Deck 11, Midship - 5:15 pm
 Join your fellow Society members for some ice cream and conversation.

1820 SOCIETY: GAME CHALLENGE

O'Gills Pub, Deck 4, Aft - 9:45 pm
 Join us and play some of your favorite board games.

ART OF THE THEME SHOW TOUR

Meridian, Deck 12, Aft - 9:00 am
 Join us for a guided tour highlighting the design, Imagineering and artistry of the ship. This tour is reserved for Guests 18 and over.

PUB QUIZ

O'Gills Pub, Deck 4, Aft - 4:30 pm
 Join us as we test your knowledge against your fellow Guests at our Pub Quiz challenge.



FUN FOR ALL AGES HIGHLIGHTS



WAKE UP WITH DISNEY JUNIOR

D Lounge, Deck 4, Midship - 8:30 am
 What happens when you experience unlimited fun with your favorite Disney Junior shows? You get an exciting dance party designed especially for preschoolers ages seven and under.



MEGA RAFFLE JACKPOT BINGO

Bingo Pre-Sales start at 3:45 pm
D Lounge, Deck 4, Midship - 4:00 pm
 Join your Cruise Staff for family Bingo fun! Four cash prize games and great raffle prize packs to be won. Don't miss out on the fun! Pre-Sales start 15 minutes prior to game.



CHIP-IT GOLF (12+)

Lobby Atrium, Deck 3, Midship - 4:00 pm
 It's par for the course for our Guests 12 and older to compete on our special "greens" in this fun tournament.



DISNEY CHANNEL ON DECK

Deck 11 Stage, Deck 11, Midship - 4:45 pm
 Don't change that channel! It's time for a Disney Channel afternoon poolside! Your Cruise Staff will host an exciting day of games and contests in between your favorite Disney Channel shows! So sit back, relax, and enjoy the sun!



JAKE & THE NEVERLAND PIRATES

D Lounge, Deck 4, Midship - 5:15 pm
 A'HoY there mates, join us for an adventure in D Lounge with Jake and the Neverland Pirates.



\$7,000 MEGA JACKPOT BINGO

Bingo Pre-Sales start at 7:15 pm
D Lounge, Deck 4, Midship - 7:30 pm
 Don't miss your chance to take home big money! 4 CASH prize games and great raffle prizes to be won! Complete the fourth game in 46 numbers or less and win the \$7,000 Mega Jackpot! Pre-Sales start 15 minutes prior to game.

MAJORITY RULES

The Tube, Deck 4, Aft - 7:30 pm
 Join your Club Host, to find out who really rules!



FAMILY SUPERSTAR KARAOKE

D Lounge, Deck 4, Midship - 11:00 pm
 Join your Cruise Staff and sing along to your favorite song - fun for everyone.

SAFETY ASHORE INFORMATION

While you will find many great experiences ashore, please remain vigilant about your personal safety and the safety of your belongings. As in any large urban tourist destination, you'll want to take some basic precautions to make the most of your time ashore.

- Be aware of your surroundings at all times. Avoid short cuts, narrow alleys and poorly lit streets.
- Avoid wandering from the main shopping and tourist areas into unfamiliar territory. If venturing out independently, have a plan, use only licensed taxi operators.
- Identity/Credit Card theft can occur anywhere. Please remain vigilant in monitoring the safe keeping of your personal information.
- Leave valuables in your room safe and avoid carrying large amounts of cash. Exercise caution when using ATMs. Cameras and handbags should be carried close to your body or concealed out of sight.
- Leave air transportation tickets and other travel documents in your room safe. When going ashore, each adult is required to carry a Driver's license, passport or other government-issued photo ID. - Note: Some ports may require guests to carry passports ashore.
- Most crimes are easier to commit in dark unlit areas. When going ashore at night, please be extra vigilant about your personal safety.

YOUTH ACTIVITY HIGHLIGHTS

DINE & PLAY

A convenience for families dining at 8:15 pm, our Youth Activities counselors will be available at 9:15 pm at the entrance of Royal Court, Enchanted Garden and Animator's Palate dining rooms to bring registered children to join the fun in the Youth Activity areas.



Deck 5, Midship (7-1440)
(3-12 years old)

9:00 am - 12:00 am

CRUISIN' WITH CRUSH

2:30 pm

Swim on by Disney's Oceaneer Club and join Crush in an undersea adventure you'll never forget.

MICKEY'S PUZZLE PLAYTIME

3:45 pm

Come and play with Mickey & friends as they share their favorite games, puzzles and dances!



Deck 5, Midship (7-1445)
(3-12 years old)

9:00 am - 12:00 am

DETECTIVE SCHOOL

10:00 am

It's a crime how much fun you'll have as you go CSI Goofy style.

MAGIC SHOW

7:30 pm

The Magnificent Magician will demonstrate to you some of the best known magic tricks on the sea.



Deck 13, Midship (7-9743)
(11-14 years old)

9:00 am - 1:00 am

SPORTS DECK FUN

2:30 pm

Take over the Sports Deck with some fun and friendly competition.

ANYONE CAN COOK: PIZZA

10:15 pm

Anyone can cook as we work together to create some of our favorite treats. From our galley to yours; join our chef as they show you how to create pizza!



Entrance on Deck 4, Forward (7-9418)
(14-17 years old)

10:00 am - 2:00 am

DISNEY ANIMATION: CREATING A CHARACTER

12:30 pm

Go behind the scenes at Walt Disney Animation Studios as Walt Disney himself talks about his most famous characters, then learn the basic techniques of drawing Mickey and Donald in this fun and interesting enrichment program.

SUPER SLOPPY SCIENCE

4:30 pm

Join Professor Make-O-Mess in some of the most extreme experiments you will ever see in the world of Super Sloppy Science!

BUENA VISTA THEATRE

Deck 4 & 5, Midship
Today's Movies



DOLBY 3D

12:45 pm
Duration: 1 hr 55 mins
Rating: PG-13

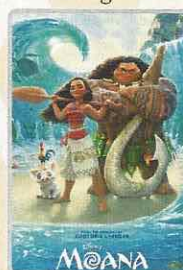


5:30 pm & 8:00 pm
Duration: 1 hr 55 mins
Rating: PG-13



Open Captioning

3:15 pm
Duration: 1 hr 53 mins
Rating: PG



DOLBY 3D

10:30 pm
Duration: 1 hr 53 mins
Rating: PG



FAMILY DECK PARTY

Don't change that channel!
It's time for a Disney Channel
afternoon poolside! Your
cruise staff will host an
exciting day of games and
contests in between your
favorite Disney Channel
shows! So sit back, relax, and
enjoy the sun!

*Deck Stage,
Deck 11, Midship,
4:45 pm*



ADULT VARIETY ACT

Featuring the Vocal
Harmonies of The FlyBoys,
as they entertain you in this
adult exclusive show.

*The Tube (18+),
Deck 4, Aft,
9:45 pm & 10:45 pm*

YOUTH ACTIVITIES OPEN HOUSE

Open House is an opportunity for all to come and participate in a variety of exciting activities and free time in the Oceaneer Club, Oceaneer Lab, it's a small world nursery, Vibe and Edge throughout the cruise. During these times secured programming will still be offered in the other venue for those looking to check their children into care.

Disney's Oceaneer Club: 9:00 am - 1:00 pm

Disney's Oceaneer Lab: 1:00 pm - 2:30 pm

Edge: 9:00 am - 10:00 am & 6:00 pm - 7:30 pm

Vibe: 10:00 am - 11:00 am & 7:30 pm - 9:00 pm

MORE TO ENJOY WHILE ONBOARD

BAHAMIAN VOYAGES

The Bahamas are renowned for breathtaking beaches, incredible recreation and exceptional shopping experiences. Pair your tropical escape with the world-class comfort and service of a Disney cruise and make your getaway complete. Visit the Disney Vacation Planning desk, Deck 4, Midship for more information. Disney Vacation Planning tends to get busy on the last day of sailing. Don't miss the opportunity to plan your next Disney vacation.

DISNEY VACATION CLUB® GROUP PREVIEW

Want to learn more about taking magical vacations year after year? Please see a Disney Vacation Club representative on Deck 4, Midship, or call 7-2805 from your stateroom phone for more information about our interactive group presentation.

PORT SHOPPING INFORMATION

Grand Cayman is a tax & duty free shopping paradise! Everything is within walking distance from the tender drop off. Meet your Port Shopping Guide, Maureen, in Diamonds International Store #1a between 12:00 pm - 2:00 pm. Remember your Port Shopping Map! Tune into channel 9 for more Grand Cayman information.

Connect @ Sea

We are now offering a NEW and improved Internet service to stay connected on your cruise like no other in the industry! Internet packages range from \$0.25 per MB - \$89.00 (1000 MB package). For more information contact your Connect@Sea Expert or Guest Services onboard.

ONBOARD AIRLINE CHECK IN

Stop by the Guest Services Desk, Deck 3, Midship to find out about enrolling in our Onboard Airline Check In Service.

GINGERBREAD HOUSE MAKING

Pick up your tickets today for our Gingerbread House Making. Tickets are required, space is limited. Visit Guest Services for details.

FREE ON DEMAND TV

Watch Disney movies, Hollywood features, ABC shows, and even captioned content, plus much more "On Demand" for FREE in the comfort of your stateroom! Bookmark your movie and come back to watch it later. Press MENU on your stateroom television remote control and follow the prompts.

Disney Cruise Line

PORT ADVENTURES

Welcome to the beautiful Cayman Islands.

Take this opportunity to discover Grand Cayman's world renowned snorkeling. Dive down deep and explore the ocean floor on the Atlantis submarine or take a tour of the world's only turtle sanctuary, Boatswain.

Visit the **Port Adventures Desk, Deck 5, Midship**, for more information.

SHOPPING

THE PIRATES LEAGUE

Shiver me timbers! Pirates are invading the Bibbidi Bobbidi Boutique tomorrow and are looking to transform you into a swashbuckling pirate to join their crew. Make your reservations by visiting Bibbidi Bobbidi Boutique, Deck 5, Midship or dialing extension 7-9438. Limited space available.

MAKE THE WORLD SPARKLE

Enjoy the magic of a New York City holiday at Tiffany & Co., where the world shines just a little bit brighter. Share the sparkle of the season, and create a memory that's sure to be treasured forever with a timeless gift from Tiffany. Visit White Caps, Deck 3, Forward.

CELEBRATE THE HOLIDAYS ONBOARD DISNEY CRUISE LINE!

Commemorate your Very MerryTime Cruise with festive souvenirs designed especially for Disney Cruise Line. Available at Mickey's Mainsail.

SPECIAL OFFER ONBOARD

Stop by the onboard merchandise shops and receive a Disney Cruise Line Cooler for \$14.99 with any merchandise purchase of \$40.00 or more. Offer not valid on previous purchases. No other discounts apply. While supplies last. Offer subject to change without notice.

HELPFUL SHOPPING TIP

Don't have time to drop off your souvenirs at your stateroom before dinner or a show? For your convenience, Disney Cruise Line's merchandise locations can hold your purchased items for up to 24 hours while you enjoy the other Disney Cruise Line experiences you don't want to miss out on. White Caps, Sea Treasures, and Mickey's Mainsail, Deck 3, Forward.

JOE KAMINSKI ART AND MORE!

Be sure to visit Vista Gallery to admire beautiful artwork featuring some of your favorite Disney characters as interpreted by celebrated artists such as Joe Kaminski. Don't forget to ask a merchandise host/hostess for details on how you can purchase your favorite pieces! Deck 4, Midship.

Due to port regulations, when the ship is docked, the stores will remain closed.



SENSES
SPA & SALON

PAMPER PACKAGE

- 50 minute Full Body Massage
 - Foot & Ankle Massage
 - Indian Scalp Massage
 - 25 Minute Booster Facial
- All for \$149

Senses Spa & Salon, Deck 11, Forward, Extension 7-1465



SOPHIA FIORI DIAMONDS

Discover the elegant Disney inspired diamond jewelry collection by Sophia Fiori, one of the world's leading designers of diamond jewelry.

AVAILABLE AT WHITE CAPS
DECK 3, FORWARD

Shutters

PHOTO BOOK

Visit Shutters today and turn your magical vacation memories into an impressive keepsake with a personalized, one-of-a-kind PhotoBook. Fill every page with wonderful memories of your family during this cruise. Orders close at 10:30 pm on the last day of the cruise. Supplies are limited. Please use the PHOTOFINDER tab on the kiosk or ask for assistance from a friendly photographer to help locate missing images.

**Please note that photos are available for viewing on our interactive photo kiosks approximately five hours after being taken and are only available for purchase during this cruise. Photo sizes are preset and cannot be changed.*

IMPORTANT INFORMATION

Security Notice

All Guests (including children) who wish to disembark the ship are required to present their Key to the World card at the gangway. A photo ID is also required for those Guests who are 18 years of age or older. Guests under the age of 18 are required to have a parent, guardian or other responsible adult sign an authorization form at the Guest Service Desk if they wish to go ashore unaccompanied or with any adult from another stateroom.

Inclement Weather

For the safety of all Guests, outdoor events may be changed due to unforeseen weather conditions.

Insect Repellent Advisory

The Centers for Disease Control and Prevention recommends wearing long-sleeved shirts and pants along with insect repellent to protect against mosquito bites and related illnesses when going ashore. Complimentary insect repellent is available on the pier as you exit the ship. Insect repellent is also available for purchase in White Caps. When using both sunscreen and insect repellent, use sunscreen first and apply insect repellent on top of sunscreen.

Corridor Quiet Hours

As a courtesy to all our Guests, please recognize quiet hallway hours from 10:00 pm to 8:00 am.

Environmental Message

With Disney's commitment to the Environment, please refrain from throwing anything over the ship's side. Thank you!

No Reserved Seats Policy

As a courtesy to all our Guests, we kindly advise that the saving of seats is not permitted in the Walt Disney Theatre, and the saving of the sun loungers is not permitted on Deck 11, 12, and 13. Items left unattended will be returned to lost and found at Guest Services, Deck 3 Midship.

Cold and Flu Reminder

Please wash hands frequently and thoroughly, particularly before meals. Contact the Health Center by dialing 7-1923, should anyone in your party become ill.

Smoking

For the comfort of our Guests, the following areas are designated as smoking areas:
• Deck 13, forward, port side by Currents
• Deck 12, aft, port side outdoor area that is accessible through the Meridian Lounge
• Deck 4, aft, port side from 6:00 pm to 6:00 am only (all of Deck 4 is non-smoking from 6:00 am to 6:00 pm)
Smoking is prohibited inside all Guest staterooms and on stateroom verandahs. Guests found smoking in their staterooms or on their verandahs will be charged a \$250 stateroom recovery fee. Electronic cigarettes may only be used in designated smoking areas.

Walt Disney Theatre

Theatrical performances may use artificial fog, strobe lights, pyrotechnics and other special effects. For the safety of our performers and the comfort of those around you, the use of any photography, video recording device or any electronic equipment is prohibited.

Verandah Safety

Please do not leave any combustible materials on your balcony when not present in your stateroom for safety reasons.

Morning	8:30	8:45	9:00	9:15	9:30	9:45	10:00	10:15	10:30	10:45	11:00	11:15	11:30	11:45	12:00	12:15	12:30	12:45	1:00	1:15	1:30					
FUNNEL VISION	Pinocchio (G) Open Captioning Funnel Vision							Hercules (G) Open Captioning Funnel Vision							Tangled (PG) Open Captioning Funnel Vision											
BUENA VISTA THEATRE	Catholic Mass																		Dr. Strange (PG-13) DOLBY 3D Duration: 1 Hour 55 Minutes							
CHARACTERS	Tinker Bell Tiana Lobby Atrium (V) Dk 4, Balcony							Belle Tiana Lobby Atrium (P) Lobby Atrium (P)																		
	Minnie Belle Peter Pan Dk 4, Balcony Lobby Atrium (P) Dk 4, Balcony							Cpt. Hook Peter Pan Dk 4, Balcony Dk 4, Balcony																		
FUN FOR ALL AGES	Disney Junior D Lounge		Disney Animation cartoon Physics D Lounge						Create a Postcard Oceaneer Club						Craft Corner Oceaneer Club				Game Challenge Oceaneer Lab							
	Catholic Mass Buena Vista Theatre				Crafts: 3D Crafts O'Gills Pub																					
ADULTS	Boot Camp (Nom. Fee) Senses Fitness Center				Art of The Theme Show Tour Meridian																					
	Friends of Bill W. Outlook																									
VIBE 14-17 YEARS OLD								Youth Activities Open House Oceaneer Club								Marshmallow Olympics				Disney Animation: Creating a Character		Scattegories				
EDGE 11-14 YEARS OLD								Youth Activities Open House Oceaneer Club				Villains						Tween Choice				GAGA Ball		Brain Teasers		
OCEANEER LAB 3-12 YEARS OLD								Disney Cruise Line Trivia				Detective School						Bingo				Lunch		Youth Activities Open House Oceaneer Club		
																								Game Challenge		
OCEANEER CLUB 3-12 YEARS OLD								Youth Activities Open House Oceaneer Club																Little Einstein's Adventure		
								Little Einstein's Adventure								Create a Postcard				Craft Corner						
Afternoon	1:45	2:00	2:15	2:30	2:45	3:00	3:15	3:30	3:45	4:00	4:15	4:30	4:45	5:00	5:15	5:30	5:45	6:00	6:15	6:30	6:45					
FUNNEL VISION	Lilo & Stitch (PG) Open Captioning Funnel Vision							The Little Mermaid (G) Open Captioning Funnel Vision							Disney Channel on Deck Funnel Vision							Mulan (G) Open Captioning Funnel Vision				
BUENA VISTA THEATRE								Moana (PG) Open Captioning Duration: 1 Hour 53 Minutes														Dr. Strange (PG-13) Duration: 1 Hour 55 Minutes				
CHARACTERS															Donald Ariel Goofy Belle Daisy Lobby Atrium (P) Lobby Atrium (V) Lobby Atrium (P) Lobby Atrium (V) Lobby Atrium (P)											
															Pluto Minnie Mickey Dk 4, Balcony Dk 4, Balcony Dk 4, Balcony											
FUN FOR ALL AGES	Magic PlayFloor Oceaneer Lab		Cruisin' for Trivia La Piazza				Crafts: Paper Plane Making La Piazza				Bingo Pre Sales		Mega Raffle Jackpot BINGO D Lounge		Disney Channel ON DECK Deck Stage		Disney Junior D Lounge				Disney Wishes Walt Disney Theatre					
													Chip-It Golf (12+) Lobby Atrium				Hanukkah Service Cabanas									
ADULTS								Informal Card Play O'Gills Pub				Mixology (21+) The Tube		Pub Quiz O'Gills Pub				1820 Society: Ice Cream Social Frozone Treats								
												Martini Tasting (21+) Meridian														
VIBE 14-17 YEARS OLD								Bingo								GAGA Ball		Super Sloppy Science		Scavenger Hunt		Craft Corner		Gotcha Registration		
EDGE 11-14 YEARS OLD	Game Challenge				Sports Deck Fun				Tween Choice								Brains and Brawns		Trivia Time		Youth Activities Open House Oceaneer Club					
OCEANEER LAB 3-12 YEARS OLD	Youth Activities Open House Oceaneer Club				Float Fun Trivia								Magic PlayFloor		Super Sloppy Science								Around the World in 7 days			
	Magic PlayFloor																									
OCEANEER CLUB 3-12 YEARS OLD	Bingo				Cruisin' with Crush								Mickey's Puzzle Playtime						Magic PlayFloor						Dinner	
Evening	7:00	7:15	7:30	7:45	8:00	8:15	8:30	8:45	9:00	9:15	9:30	9:45	10:00	10:15	10:30	10:45	11:00	11:15	11:30	11:45	12:00					
FUNNEL VISION	Cinderella (2015) (PG) Open Captioning Funnel Vision							Cool Runnings (PG) Open Captioning Funnel Vision																		
BUENA VISTA THEATRE								Dr. Strange (PG-13) Duration: 1 Hour 55 Minutes							Moana (PG) DOLBY 3D Duration: 1 Hour 53 Minutes											
CHARACTERS	Ariel Daisy Donald Lobby Atrium (V) Lobby Atrium (P)				Donald Lobby Atrium (P)				Minnie Belle Mickey Cinderella Dk 4, Balcony Lobby Atrium (V) Dk 4, Balcony Lobby Atrium (V)																	
	Pluto Minnie Goofy Mickey Preludes Dk 4, Balcony Preludes				Mickey Dk 4, Balcony						Daisy Donald Lobby Atrium (P) Lobby Atrium (P)															
FUN FOR ALL AGES	Bingo Pre Sales		\$7,000 Mega Jackpot BINGO D Lounge										Villains Quotes Trivia D Lounge		So You Think You Know Your Family? D Lounge		Family KARAOKE D Lounge									
	Family Dance Party The Tube		Majority Rules The Tube										Classic Jazz with Fine Whines Lobby Atrium													
ADULTS								Ultimate Disney Trivia O'Gills Pub								Club DJ J Alan The Tube		The Vocal Harmonies of THE FLYBOYS The Tube		Snippets The Tube		The Vocal Harmonies of THE FLYBOYS The Tube		80's/90's Remix with Club DJ J Alan The Tube		
								Live Music with Soul Duo La Piazza																		
VIBE 14-17 YEARS OLD	Video Game Challenge				Youth Activities Open House Oceaneer Club				Pump It Up				Gender Wars				Gotcha Registration		Anyone Can Cook							
EDGE 11-14 YEARS OLD	Open House Oceaneer Club				Video Game Challenge				Four Square				Picture This		Cards Tournament		Anyone Can Cook: Pizza				Pajamarama Movie Night					
OCEANEER LAB 3-12 YEARS OLD					Magic Show								Disney Animation: Creating a Character		Get the Hook											
OCEANEER CLUB 3-12 YEARS OLD	Dress Up Fun				Once Upon a Time								Relay Games						Heffalump Expodishun							

Symbol for activities that will be repeated during the cruise

FOLD

Fold along the dotted lines and take me with you so you don't miss any of the fun!

FOLD

YOUTH ACTIVITIES OPEN HOUSE
A non-secured program with activities for families, adults and children to enjoy together.

