

PERSONAL NAVIGATOR

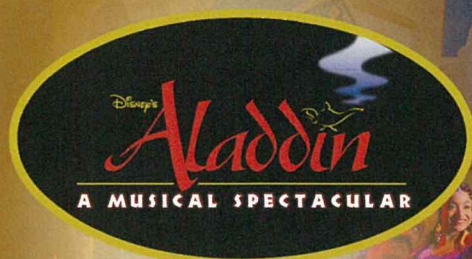


Sunrise: 7:07 am Sunset: 6:00 pm
Evening Attire: Formal

Today: Clear Skies High: 72°F/22°C
Tomorrow: Partly Sunny High: 74°F/23°C

SUNDAY, JANUARY 8, 2017

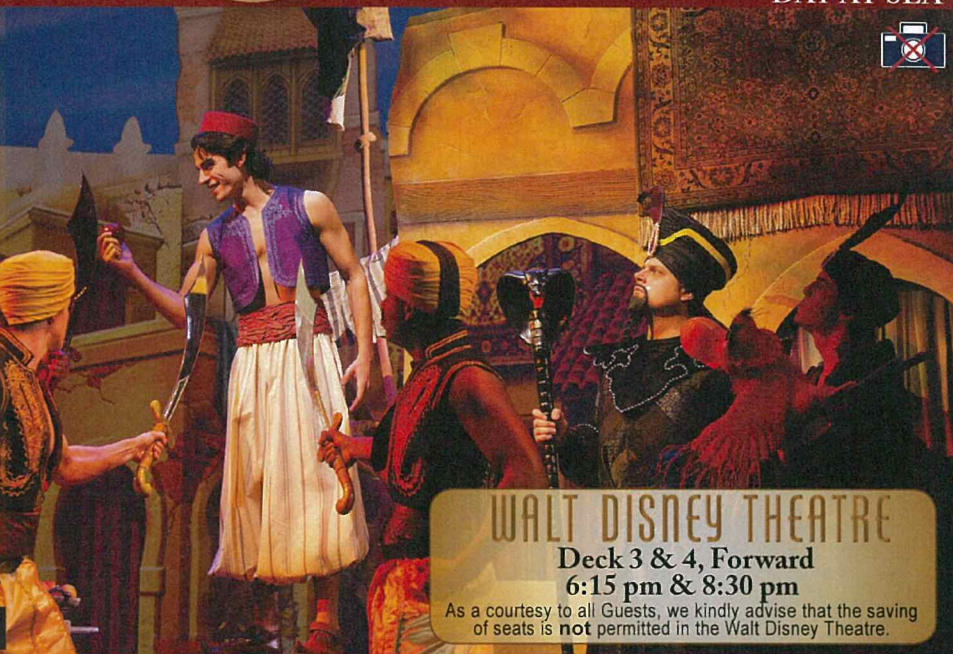
DAY AT SEA



A fast-paced, musical comedy based on the beloved animated film.

Aladdin, the "street rat" of Agrabah, meets a wise-cracking Genie, battles the evil Jafar, and falls in love with the beautiful and spirited Princess Jasmine. Disney storytelling at its best.

Assistance available at the entrance to the Walt Disney Theatre 30 minutes prior to show time.



WALT DISNEY THEATRE

Deck 3 & 4, Forward
6:15 pm & 8:30 pm

As a courtesy to all Guests, we kindly advise that the saving of seats is **not** permitted in the Walt Disney Theatre.

Disney FANTASY Fun Facts

Tonnage: 130,000 Gross Tons

Height: 216 Feet

Length: 1115 Feet

Important Dates

Name Announcement: March 10, 2009

Steel Cutting: March 16, 2010

Keel Laying: February 11, 2011

Delivery: February 9, 2012

Almost four football fields in length, the Disney Fantasy is longer than the height of the Eiffel Tower in Paris (1,063 feet). She is also longer than the height of New York City's famous Chrysler building (1,047 feet).

The Disney Fantasy's Whistle

The Disney Fantasy's whistle, a prominent element of the "Sailing Away" deck party at the start of the cruise, is quite the musical talent. It's able to perform not just the first musical line of "When You Wish Upon a Star" but also the second line of the song ("makes no difference who you are") plus several measures of "Yo Ho (A Pirate's Life for Me)," "It's a Small World," "Be Our Guest," "Hi Diddle Dee Dee (An Actor's Life for Me)," "A Dream is a Wish," and "Do you want to build a Snowman".



CAPTAIN'S RECEPTION

Enjoy live music and a cocktail while meeting some of the ship's officers.

Lobby Atrium, Deck 3, Midship,
5:15 pm & 7:30 pm

Enjoy an exclusive photo opportunity with Commodore Tom at
5:30 pm & 7:30 pm, Lobby Atrium

Don't Miss:

Good Morning Disney Fantasy

Channel 5 - Repeated from 5:00 am - 12:00 pm

Tune in to channel 5 as your Cruise Director highlights the upcoming events and activities for the day.

Wake Up with Disney Junior

D Lounge, Deck 4, Midship - 8:30 am

What happens when you experience unlimited fun with your favorite Disney Junior shows? You get an exciting dance party designed especially for preschoolers ages seven and under.

Anyone Can Cook: Sea Bass (18+)

D Lounge, Deck 4, Midship - 2:15 pm

From our galley to yours. Join our chefs as they show you how to prepare delicious dishes. Today's Menu - Sea Bass.

Formal Night After Party

D Lounge, Deck 4, Midship - 9:45 pm

Join your Cruise Staff as we continue the party, with special appearances from the world famous Disney Characters.



Welcome Aboard Photo Raffle

Stop at Shutters today before 11:00 am and drop off your raffle ticket, for a chance to win a 10 Digital Photo Package worth \$149.95.

*Terms & Condition apply.

DINNER MENU

Animator's Palate : Pacific Rim Cuisine
Enchanted Garden : Continental Market Cuisine
Royal Court : French Cuisine

DRINK OF THE DAY

Bahama Mama (Alcoholic)
Coco Bali (Non-Alcoholic)

IMPORTANT NUMBERS

Fire/Security: 7-3001
Medical Emergency: 7-3000
Health Center: 7-1923

ADULT ACTIVITY HIGHLIGHTS



SENSES SPA FITNESS CLASSES & SEMINARS

Pure Form Pilates - Donald's Pool - 7:00 am
Fab Abs - Senses Spa & Salon - 7:45 am
Body Sculpt Boot Camp (Nom. Fee) - Senses Fitness Center - 8:30 am
Acupuncture Seminar - Senses Spa & Salon - 9:15 am
Detox for Health & Weight Loss - Senses Spa & Salon - 10:30 am
Non-Surgical Face Lift - Senses Spa & Salon - 11:30 am
Acupuncture Seminar; Acupuncture Pain Relief - Senses Spa & Salon - 9:15 am
Good Feet Seminar: Walking In Comfort - Senses Spa & Salon - 2:00 pm
Secrets to a Flatter Stomach - Senses Spa & Salon - 2:30 pm
Non-Surgical Facelift Seminar - Senses Spa & Salon - 3:15 pm
Tour De Cycle (Sign-Up Required) - Senses Fitness Center - 4:00 pm
Complimentary Footprint Analysis - Senses Spa & Salon - 5:00 pm

TASTING CLASSES

Chocolate Tasting (21+) - Ooh La La - 12:15 pm
Rum Tasting (21+) - Meridian - 1:00 pm
Champagne Tasting (21+) - Ooh La La - 1:45 pm
Mixology (21+) - Skyline - 2:00 pm
Martini Tasting (21+) - Meridian - 3:00 pm
Tequila & Margarita Tasting (21+) - Ooh La La - 4:30 pm
Whiskey Tasting (21+) - Cove Cafe - 10:00 pm
Cognac Tasting (21+) - Meridian - 10:30 pm
 Please make reservations for tastings at Guest Services for a nominal fee.
 Tasting Seminars are only for Guests 21 and older.



1820 SOCIETY: 2000'S MUSIC CHALLENGE

O'Gills Pub, Deck 4, Aft - 12:00 pm
 Join your Cruise Staff as we navigate our way through the music of the 2000's.

1820 SOCIETY: MINI GOLF

Goofy Golf, Deck 13, Aft - 3:45 pm
 Can you get a hole in one? Give it a try with some mini golf.

ART OF THE THEME SHOW TOUR

Meridian, Deck 12, Aft - 9:00 am

Join us for a guided tour highlighting the design, Imagineering and artistry of the ship. This tour is reserved for Guests 18 and over.

BEATLES TRIBUTE WITH SOUL DUO

La Piazza, Deck 4, Aft - 9:15 pm

From our galley to yours. Join our chefs as they show you how to prepare delicious dishes. Today's Menu - Sea Bass.

THE QUEST

The Tube, Deck 4, Aft - 10:15 pm

Enjoy the wildest and wackiest scavenger team event on the seven seas!



FUN FOR ALL AGES HIGHLIGHTS



DISNEY ANIMATION: CREATING A CHARACTER

D Lounge, Deck 4, Midship - 9:45 am

Go behind the scenes at Walt Disney Animation Studios as Walt Disney himself talks about his most famous characters, then learn the basic techniques of drawing your favorite pals in this fun and interesting enrichment program.

DISNEY TRIVIA

La Piazza, Deck 4, Aft - 10:30 am & 1:45 pm

Navigate your way through a round of questions to test how much you really know about Disney.

TODDLER TIME

Outlook, Deck 14, Midship - 10:30 am & 2:30 pm

Join us for some fun activities that your toddler is sure to enjoy.



DIAMOND JACKPOT BINGO

Bingo Pre-Sales start at 11:00 am

D Lounge, Deck 4, Midship - 11:15 am

Join us for 4 cash prize games and your chance to win a diamond pendant! Everyone attending will also receive a voucher to collect a free Diamonds International charm bracelet! Complete the Big X in 20 numbers or less, and \$500 could be yours. If not we continue to play for the highest cash prize of the session! Pre-Sales start 15 minutes prior to the game.



DISNEY VACATION CLUB GROUP PREVIEW

D Lounge, Deck 4, Midship - 12:30 pm

The Tube, Deck 4, Aft - 4:15 pm

Want to learn more about taking magical vacations year after year? Please see a Disney Vacation Club representative on Deck 4, Midship, or call 7-2805 from your stateroom phone for more information about our interactive group presentation.



CHIP-IT GOLF (12+)

Lobby Atrium, Deck 3, Midship - 3:30 pm

It's par for the course for our Guests 12 and older to compete on our special "greens" in this fun tournament.



\$5,000 MEGA JACKPOT BINGO

Bingo Pre-Sales start at 4:00 pm

D Lounge, Deck 4, Midship - 4:15 pm

Don't miss your chance to take home big money! 4 CASH prize games and great raffle prizes to be won! Complete the fourth game in 46 numbers or less and win the \$5,000 Mega Jackpot! Pre-Sales start 15 minutes prior to game.



SO YOU THINK YOU KNOW YOUR FAMILY?

D Lounge, Deck 4, Midship - 7:30 pm

This fun-filled family game show is always full of surprises. Find out how well you know, or don't know your family!

YOUTH ACTIVITIES HIGHLIGHTS

DINE & PLAY

A convenience for families dining at 8:15 pm, our Youth Activities counselors will be available at 9:15 pm at the entrance of Royal Court, Enchanted Garden and Animator's Palate dining rooms to bring registered children to join the fun in the Youth Activity areas.



Deck 5, Midship (7-1440)
(3-12 years old)

9:00 am - 12:00 am

MICKEY'S PUZZLE PLAYTIME

11:30 am

Come and play with Mickey & friends as they share their favorite games, puzzles and dances!

TOY STORY BOOT CAMP

3:15 pm

Join Corporal Green in our own version of boot camp as we learn how to have fun - The Toy Story way!



Deck 5, Midship (7-1445)
(3-12 years old)

9:00 am - 12:00 am

GET THE HOOK

3:15 pm

A villainous villain has stolen Captain Hook's prized golden hook. Become a member of the Top Deck Detective Agency and help solve the clues to retrieve Hook's hook.

PISTON CUP CHALLENGE

10:00 pm

It's Dinoco time and you're part of the pit crew! Design your own race car and see if you've got what it takes to end up in the winner's circle!



Deck 13, Midship (7-9743)
(11-14 years old)

9:00 am - 1:00 am

DISNEY ANIMATION: CREATING A CHARACTER

11:00 am

Go behind the scenes at Walt Disney Animation Studios as Walt Disney himself talks about his most famous characters, then learn the basic techniques of drawing Mickey and Donald in this fun and interesting enrichment program.

BRAINS AND BRAWNS

2:30 pm

You will compete against each other to solve clues, take part in physical challenges, and reach the finish first.



Entrance on Deck 4, Forward (7-9418)
(14-17 years old)

9:00 am - 2:00 am

ZOMBIFIED

12:00 pm

A big movie producer is looking for zombies to help him film the finale to his latest masterpiece, Zombified.

DREAM NOW! SEA HOW! - CREATE IT

3:30 pm

Imagine a job where your days are spent dreaming up plots, characters, designs or mechanics that only come from one place. . . In this VIP Experience you will meet one of the creative minds with Disney. A special Guest will ignite your imagination and answer your questions.

BUENA VISTA THEATRE

Deck 4 & 5, Midship
Today's Movies



FAMILY MOVIE

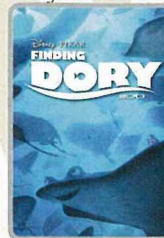
FUN TIME

8:30 am

Duration:

1 hr 53 mins

Rating: PG



3D

12:45 pm

Duration:

1 hr 45 mins

Rating: PG



3:00 pm

Duration:

2 hrs 4 mins

Rating: PG



5:30 pm & 8:00 pm

Duration: 1 hr 53 mins

Rating: PG



3D

10:30 pm

Duration: 1 hr 55 mins

Rating: PG-13



FAMILY VARIETY ACT

Featuring the
Comedy & Hypnosis
of Dale K,
as he entertains the entire
family in this fun filled show.

**Walt Disney Theatre,
Deck 3, Forward,
2:00 pm**

(Doors open 15 minutes prior to show time)



JOHN CASSIDY

Magic Workshop (6+)

John Cassidy teaches you the basics
of magic in this fun family event.

The Tube,

Deck 4, Aft,

1:00 pm & 7:30 pm

Adult Variety (18+)

Featuring the Magic & Comedy
of John Cassidy as he entertains you
in this adult exclusive show.

The Tube ,

Deck 4, Aft,

9:45 pm & 10:45 pm

YOUTH ACTIVITIES OPEN HOUSE

Open House is an opportunity for all to come and participate in a variety of exciting activities and free time in the Oceaneer Club, Oceaneer Lab, it's a small world nursery, Vibe and Edge throughout the cruise. During these times secured programming will still be offered in the other venue for those looking to check their children into care.

Disney's Oceaneer Lab: 7:00 pm - 8:30 pm

Edge: 9:00 am - 10:00 am & 6:00 pm - 7:30 pm

Vibe: 9:00 am - 10:00 am & 7:30 pm - 9:00 pm

MORE TO ENJOY WHILE ONBOARD

EASTERN CARIBBEAN

Disney Cruise Line offers a variety of sailings to exotic ports in the Caribbean, including port of Tortola, in the British Virgin Islands. Most voyages even include a stop at Disney Castaway Cay. Visit the Disney Vacation Planning desk, Deck 4, Midship, for more information. Disney Vacation Planning tends to get busy on the last day of sailing. Don't miss the opportunity to plan your next Disney vacation.

DISNEY VACATION CLUB® GROUP PREVIEW

Want to learn more about taking magical vacations year after year? Please see a Disney Vacation Club representative on Deck 4, Midship, or call 7-2805 from your stateroom phone for more information about our interactive group presentation.

PORT SHOPPING INFORMATION

Join your Port Shopping Guide, Maureen, to learn about the incredible tax & duty free shopping ashore this cruise. Everything from diamonds to t-shirts, Rolex to rum-cake! Port Shopping Talk, Buena Vista Theatre, Deck 4, Midship, 11:15 am. FREE Charm Bracelet for everyone who attends! Raffle to win OVER \$1000 in prizes & giveaways! Later, join Maureen as they give insider tips on shopping for gemstones in the Caribbean at the Diamond & Gemstone Seminar, The Tube, Deck 4, Aft, 3:00 pm.



SENSES
SPA & SALON

**SPA SPECIAL:
IONITHERMIE**

Would you like to lose between 1 – 8 inches?
Speed up your metabolism?
Firm your muscle tone?
Improve appearance of cellulite?
If so, then Ionithermie is the best treatment for you!
50 minutes for \$155

Senses Spa & Salon, Deck 11, Forward, Extension 7-1465



SOPHIA FIORI
DIAMONDS

Discover the elegant Disney inspired diamond jewelry collection by Sophia Fiori, one of the world's leading designers of diamond jewelry.

**AVAILABLE AT WHITE CAPS
DECK 3, FORWARD**

Shutters

**FORMAL
PORTRAITS
TONIGHT!**

Now that the family is dressed up and ready to enjoy the evening, capture the memories in your formal attire by visiting our professional portrait studios located in the Lobby Atrium, Deck 3, Midship.

5:15 pm - 6:00 pm
7:15 pm - 8:30 pm
9:30 pm - 10:15 pm

**Please note that photos are available for viewing on our interactive photo kiosks approximately five hours after being taken and are only available for purchase during this cruise. Photo sizes are preset and cannot be changed.*

Connect @ Sea

CONNECT@SEA

We are now offering a NEW and improved Internet service to stay connected on your cruise like no other in the industry! Internet packages range from \$0.25 per MB - \$89.00 (1000 MB package). For more information contact your Connect@Sea Expert or Guest Services onboard.

ONBOARD AIRLINE CHECK IN

Stop by the Guest Services Desk, Deck 3, Midship to find out about enrolling in our Onboard Airline Check In Service.



CASTAWAY CAY 5K REGISTRATION (10+)

Sign up today for the Castaway Cay 5K! Please visit the Port Adventures Desk or the Guest Services Desk to register at anytime prior to our arrival at Disney Castaway Cay. Please note that runners must be 10 years of age or older to participate. Additionally, no strollers, motorized wheelchairs or scooters, are permitted to participate in the Castaway Cay 5K.



MIDSHIP DETECTIVE AGENCY

The puppies from 101 Dalmatians have gone missing! Use your special detective "badge" to track down the puppies and catch the villain who took them. Decks 2 & 5, Midship.

Disney Cruise Line

PORT ADVENTURES

The best way to explore our ports of call is through the eyes of a Port Adventure. Be adventurous and climb up Dunn's River Falls or explore the Green Grotto Caves in Falmouth. Why not swim with stingrays in Grand Cayman or explore the ruins in Cozumel.

Visit the **Port Adventures Desk, Deck 5, Midship**, for more information.

SHOPPING

BIBBIDI BOBBIDI BOUTIQUE

Young Princesses and Princes can get ready for a formal evening with a makeover at the Bibbidi Bobbidi Boutique. Make your reservations by visiting Bibbidi Bobbidi Boutique, Deck 5, Midship or dialing extension 7-9438. Limited space available.

SOPHIA FIORI GUESS THE CARAT WEIGHT

Whoever guesses closest wins a Sophia Fiori fine jewelry piece! Winner announced tonight at 7:30 pm. Must be present to win. White Caps, Deck 3, Forward.

STYLISH TAG HEUER WATCHES

TAG Heuer is one of the largest and fastest growing Swiss brands and is in a constant quest for innovation and high precision. Stop by White Caps today where you'll discover the luxury and style of a TAG Heuer watch. White Caps, Deck 3, Forward.

THOMAS KINKADE: HIDDEN CHARACTER CHALLENGE!

Known as the "Painter of Light," Thomas Kinkade is one of Disney's most celebrated artists having created an array of enchanting artwork. Stop by the Vista Gallery today to view his unique collection of paintings featuring some of your favorite Disney characters! Also, take the time to try and find all of the hidden Disney characters scattered throughout his paintings. Are you up to the challenge? Deck 4, Midship.

DISNEY CRUISE LINE® DOONEY & BOURKE HANDBAGS

Swing by White Caps and commemorate your cruise with style with the new nautical themed Disney Cruise Line® Dooney & Bourke handbag collection. Deck 3, Forward.

THE PIRATES LEAGUE

Shiver me timbers! Pirates are invading the Bibbidi Bobbidi Boutique tomorrow and are looking to transform you into a swashbuckling pirate to join their crew. Make your reservations by visiting Bibbidi Bobbidi Boutique, Deck 5, Midship or dialing extension 7-9438. Limited space available.

DF0251 01-08-2017 ©DISNEY

IMPORTANT INFORMATION

Security Notice

All Guests (including children) who wish to disembark the ship are required to present their Key to the World card at the gangway. A photo ID is also required for those Guests who are 18 years of age or older. Guests under the age of 18 are required to have a parent, guardian or other responsible adult sign an authorization form at the Guest Service Desk if they wish to go ashore unaccompanied or with any adult from another stateroom.

Insect Repellent Advisory

Protect against mosquito bites and related illnesses when going ashore. Insect repellent is available for purchase in White Caps. When using both sunscreen and insect repellent, use sunscreen first and apply insect repellent on top of sunscreen.

Cold and Flu Reminder

Please wash hands frequently and thoroughly, particularly before meals. Contact the Health Center by dialing 7-1923, should anyone in your party become ill.

Corridor Quiet Hours

As a courtesy to all our Guests, please recognize quiet hallway hours from 10:00 pm til 8:00 am

Inclement Weather

For the safety of all Guests, outdoor events may be changed due to unforeseen weather conditions.

Environmental Message

With Disney's commitment to the Environment, please refrain from throwing anything over the Ship's side. Thank you!

No Reserved Seats Policy

As a courtesy to all our Guests, we kindly advise that the saving of seats is not permitted in the Walt Disney Theatre, and the saving of the sun loungers is not permitted on Deck 11, 12, and 13. Items left unattended will be returned to lost and found at Guest Services, Deck 3 Midship.

Smoking

For the comfort of our Guests, the following areas are designated as smoking areas:
*Deck 13, forward, port side by Currents
*Deck 12, aft, port side outdoor area that is accessible through the Meridian Lounge
*Deck 4, aft, port side from 6:00 pm to 6:00 am only (all of Deck 4 is non-smoking from 6:00 am to 6:00 pm)
Smoking is prohibited inside all Guest staterooms and on stateroom verandahs. Guests found smoking in their staterooms or on their verandahs will be charged a \$250 stateroom recovery fee. Electronic cigarettes may only be used in designated smoking areas.

Walt Disney Theatre



Theatrical performances may use artificial fog, strobe lights, pyrotechnics and other special effects. For the safety of our performers and the comfort of those around you, the use of any photography, video recording device or any electronic equipment is prohibited.

Verandah Safety

Please do not leave any combustible materials on your balcony when not present in your stateroom for safety reasons.

Morning	8:30	8:45	9:00	9:15	9:30	9:45	10:00	10:15	10:30	10:45	11:00	11:15	11:30	11:45	12:00	12:15	12:30	12:45	1:00	1:15	1:30
FUNNEL VISION	A Goofy Movie (G) Open Captioning Funnel Vision					Frozen (PG) Open Captioning Funnel Vision					Inside Out (PG) Open Captioning Funnel Vision										
BUENA VISTA THEATRE	Family Movie Fun Time: Moana (PG) Duration: 1 Hour 53 Minutes										Port Shopping Talk					Finding Dory (PG) Duration: 1 Hour 45 Minutes					
CHARACTERS			Buzz Lobby Atrium (V)		Jessie Lobby Atrium (V)		Buzz Lobby Atrium (V)		Jessie Lobby Atrium (V)		Woody Lobby Atrium (V)		Daisy Preludes		Goofy Preludes		Pluto Preludes		Stitch Preludes		
	Chip & Dale Preludes		Donald Preludes		Chip & Dale Preludes		Donald Preludes		Daisy Preludes		Goofy Preludes		Buzz Lobby Atrium (V)		Mad Hatter Dk 4, Balcony		Queen of Hearts Dk 4, Balcony		Mad Hatter Dk 4, Balcony		
FUN FOR ALL AGES	 D Lounge		Crafts: 3D Crafts La Piazza		 D Lounge		Disney Trivia La Piazza		Bingo Pre Sales		Diamond Jackpot D Lounge		 D Lounge		 D Lounge		MAGIC WORKSHOP The Tube				
			Interdenominational Service (Guest Led) Outlook		Walking Ship Tour Preludes		Toddler Time Outlook				Crafts: Door Hangers La Piazza				Disney Vacation Club Group Preview D Lounge		Watch Seminar La Piazza				
ADULTS	Friends of Bill W. Outlook		Art of The Theme Show Tour Meridian				Pub Quiz O'Gills Pub				Sports Trivia O'Gills Pub		Port Shopping Talk Buena Vista Theatre		1820 Society: 2000's Music Trivia O'Gills Pub		Cruisin' Solo Lunch Royal Court		Selkie LIVE! Quiet Cove		
VIBE 14-17 YEARS OLD			Youth Activities Open House				Open for Teens		Coffee Break		Disney Scene It				Zombified						
EDGE 11-14 YEARS OLD			Youth Activities Open House				GAGA Ball				Disney Animation: Creating a Character				Guesstures				Marshmallow Olympics		
OCEANEER LAB 3-12 YEARS OLD			Stitch's Adventure Squad				Super Sloppy Science				Wacky Relays								Magic PlayFloor		
OCEANEER CLUB 3-12 YEARS OLD			Pre-School Fun (3-5 Years Old)				Magic Show				Memory Wall		Mickey's Puzzle Playtime				Lunch		Aloha Luau		
			Little Einstein's Adventure																		

Afternoon	1:45	2:00	2:15	2:30	2:45	3:00	3:15	3:30	3:45	4:00	4:15	4:30	4:45	5:00	5:15	5:30	5:45	6:00	6:15	6:30	6:45		
FUNNEL VISION	Big Hero 6 (PG) Open Captioning Funnel Vision									Brother Bear (G) Open Captioning Funnel Vision					Guardians of the Galaxy (PG-13) - OC Funnel Vision								
BUENA VISTA THEATRE	Star Wars: Episode V. The Empire Strikes Back (PG) Duration: 2 Hours 4 Minutes									Moana (PG) Duration: 1 Hour 53 Minutes													
CHARACTERS	Pluto Preludes		Mickey Preludes		Minnie Preludes	Geppetto Lobby Atrium (V)		Jiminy Lobby Atrium (V)		Geppetto Lobby Atrium (V)		Pinocchio Lobby Atrium (V)		Jiminy Lobby Atrium (V)		Pinocchio Lobby Atrium (V)							
	Queen of Hearts Dk 4, Balcony	White Rabbit Dk 4, Balcony	Mad Hatter Dk 4, Balcony		White Rabbit Dk 4, Balcony	Mickey Preludes		Minnie Preludes		Mickey Preludes		Goofy Preludes		Mickey Preludes									
FUN FOR ALL AGES	The Hypnosis & Comedy of DALE K Walt Disney Theatre					Disney Tunes Trivia La Piazza		 Lobby Atrium (12+)	Bingo Pre Sales		\$5,000 Mega Jackpot with Sophia Fiori BINGO D Lounge			Captain's Welcome Reception Lobby Atrium			 A MUSICAL SPECTACULAR Walt Disney Theatre						
	Disney Trivia La Piazza		Toddler Time Outlook						Family Crafts La Piazza		Who Am I? La Piazza			Crafts: Paper Plane Making The Tube			Family Crafts D Lounge						
ADULTS	 ANYONE CAN COOK (CRAFTING SERIES) D Lounge - Sea Bass		Diamond & Gemstone Seminar The Tube			Live Guitar with Selkie Quiet Cove		1820 Society: Mini Golf Goofy Golf		Live Guitar with Selkie Quiet Cove			Disney Vacation Club Group Preview The Tube										
VIBE 14-17 YEARS OLD	Dive into DJ'ing							Dream Now! Sea How! - Create It					Trivia Challenge			Foosball Tournament			Brain Teasers		Cards Tournament		
EDGE 11-14 YEARS OLD	Craft Corner		Brains and Brawns					Anyone Can Cook					Sports Deck Fun					Youth Activities Open House					
OCEANEER LAB 3-12 YEARS OLD	Anyone Can Cook							Get the Hook		Four Square		Disney Animation: Creating a Character											
OCEANEER CLUB 3-12 YEARS OLD	Cruisin' with Crush							Scavenger Hunt		Toy Story Boot Camp				Tinker Bell's Talent Show					Dinner				

Evening	7:00	7:15	7:30	7:45	8:00	8:15	8:30	8:45	9:00	9:15	9:30	9:45	10:00	10:15	10:30	10:45	11:00	11:15	11:30	11:45	12:00	
FUNNEL VISION							Lilo & Stitch (PG) Funnel Vision															
BUENA VISTA THEATRE							Moana (PG) Duration: 1 Hour 53 Minutes						Dr. Strange (PG-13) Duration: 1 Hour 55 Minutes									
CHARACTERS		Mickey Dk 4, Balcony		Mickey Dk 4, Balcony		Mickey Dk 4, Balcony				Minnie Preludes			Donald Preludes			Minnie Preludes	Mickey Dk 4, Balcony					
		Chip & Dale Lobby Atrium (V)	Minnie Preludes	Goofy Lobby Atrium (V)	Donald Preludes	Chip & Dale Lobby Atrium (V)				Goofy Lobby Atrium (V)	Mickey Dk 4, Balcony	Pluto Lobby Atrium (V)	Chip & Dale Lobby Atrium (V)	Daisy Lobby Atrium (V)								
FUN FOR ALL AGES		Magic Workshop The Tube						 A MUSICAL SPECTACULAR Walt Disney Theatre			Formal Night After Party D Lounge			 D Lounge								
		Captain's Welcome Reception Lobby Atrium																				
		So You Think You Know Your Family? D Lounge						Family Crafts D Lounge						Classic Jazz with Fine Whines Lobby Atrium								
ADULTS		Billy Joel Tribute with Alex Hopkins La Piazza						Soul Duo LIVE! La Piazza			Variety: John Cassidy The Tube		The Quest The Tube		Variety: John Cassidy The Tube		Going Underground with Club DJ Pete The Tube					
											Team Trivia O'Gills Pub				Team Trivia O'Gills Pub		Live Music with Soul Duo La Piazza					
VIBE 14-17 YEARS OLD	Cards Tournament		Youth Activities Open House						Pump It Up						That's Hilarious		Gender Wars					
EDGE 11-14 YEARS OLD	Open House		Magic Show				Pictionary		Video Game Challenge					Gender Wars				Tween Choice				
OCEANEER LAB 3-12 YEARS OLD	Youth Activities Open House									Lights, Camera, Improv!						Piston Cup Challenge						
	Hula Hoop Jam		Anyone Can Cook																			
OCEANEER CLUB 3-12 YEARS OLD	Dress Up Fun		Once Upon a Time						Magic PlayFloor					Pluto's Pajama Party			Cartoon Time					

Symbol for activities that will be repeated during the cruise

Fold along the dotted lines and take me with you so you don't miss any of the fun!

YOUTH ACTIVITIES OPEN HOUSE
A non-secured program with activities for families, adults and children to enjoy together.



SUNDAY, JANUARY 8, 2017 - DAY AT SEA

BUENA VISTA THEATRE

Deck 4 & 5, Midship



FAMILY MOVIE FUN TIME 8:30 am Duration: 1 hr 53 mins Rating: PG	3D 12:45 pm Duration: 1 hr 45 mins Rating: PG	3D 3:00 pm Duration: 2 hrs 4 mins Rating: PG	3D 5:30 pm & 8:00 pm Duration: 1 hr 53 mins Rating: PG	3D 10:30 pm Duration: 1 hr 55 mins Rating: PG-13
---	--	---	---	---

Character Appearances

CHIP & DALE

Preludes
9:00 am & 10:00 am
Lobby Atrium (V)
7:15 pm, 8:15 pm & 10:00 pm

BUZZ LIGHTYEAR

Lobby Atrium (V)
9:15 am, 10:15 am & 11:45 am

DONALD DUCK

Preludes
9:30 am, 10:30 am, 8:00 pm
& 9:45 pm

JESSIE

Lobby Atrium (V)
9:45 am & 10:45 am

DAISY DUCK

Preludes
11:00 am & 12:00 pm
Lobby Atrium (V)
10:15 pm

WOODY

Lobby Atrium (V)
11:15 am

GOOFY

Preludes
11:30 am, 12:30 pm & 5:00 pm
Lobby Atrium (V)
7:45 pm & 9:15 pm

MAD HATTER

Deck 4, Balcony
12:15 pm, 1:15 pm & 2:45 pm

QUEEN OF HEARTS

Deck 4, Balcony
12:45 pm & 1:45 pm

PLUTO

Preludes
1:00 pm & 2:00 pm
Lobby Atrium (V) - 9:45 pm

STITCH

Preludes - 1:30 pm

WHITE RABBIT

Deck 4, Balcony
2:15 pm & 3:15 pm

MICKEY MOUSE

Preludes
2:30 pm, 3:30 pm,
4:30 pm & 5:30 pm
Deck 4, Balcony
7:15 pm, 7:45 pm, 8:15 pm,
9:30 pm & 10:30 pm

MINNIE MOUSE

Preludes
3:00 pm, 4:00 pm, 7:30 pm,
9:15 pm & 10:15 pm

GEPPETTO

Lobby Atrium (V)
3:15 pm & 4:15 pm

JIMINY CRICKET

Lobby Atrium (V)
3:45 pm & 5:15 pm

PINOCCHIO

Lobby Atrium (V)
4:45 pm & 5:45 pm

(H) Hallway - (S) Starboard Side - (P) Port Side - (V) Vestibule

For details of daily Disney character appearances, refer to the character line on your Navigator Grid, or the digital character board in the Lobby Atrium.

IMPORTANT NUMBERS

Fire/Security: 7-3001
Medical Emergency: 7-3000
Health Center: 7-1923

SHIP DIRECTORY

YOUTH ACTIVITIES

DISNEY'S OCEANEER CLUB	DECK 5, MID	9:00 AM - 12:00 AM
DISNEY'S OCEANEER LAB	DECK 5, MID	9:00 AM - 12:00 AM
EDGE	DECK 13, MID	9:00 AM - 1:00 AM
VIBE	DECK 4, FWD	9:00 AM - 2:00 AM
IT'S A SMALL WORLD NURSERY	DECK 5, MID	9:00 AM - 11:30 PM

POOLS & MORE

* Children under 12 must have adult supervision in pool areas.

AQUADUCK	DECK 12, MID	9:00 AM - 10:00 PM
AQUALAB	DECK 12, AFT	9:00 AM - 6:00 PM
DONALD'S POOL	DECK 11, MID	9:00 AM - 10:00 PM
MICKEY'S POOL	DECK 11, MID	9:00 AM - 10:00 PM
MICKEY'S SLIDE	DECK 11, MID	9:00 AM - 6:00 PM
NEMO'S REEF	DECK 11, MID	9:00 AM - 6:00 PM
QUIET COVE POOL (18+)	DECK 11, FWD	8:00 AM - 11:00 PM
SATELLITE FALLS (18+)	DECK 13, FWD	6:00 AM - 8:00 PM

Please note, "selfie sticks" are not permitted in the pools or on the slides.

Complimentary pool vests are available for children to use in the pools onboard. They are located on the pool deck.

RECREATION

GOLF/SPORTS SIMULATORS	DECK 13, AFT	9:00 AM - 6:00 PM
GOOFY GOLF	DECK 13, AFT	8:00 AM - 10:00 PM
GOOFY'S SPORTS DECK	DECK 13, AFT	8:00 AM - 6:00 PM
MIDSHIP DETECTIVE AGENCY	DECKS 2 & 5, MID	9:00 AM - 10:00 PM
PORT ADVENTURES DESK	DECK 5, MID	9:00 AM - 5:00 PM 7:00 PM - 8:30 PM
SENSES FITNESS CENTER (18+)	DECK 11, FWD	6:00 AM - 10:00 PM

GENERAL INFORMATION

ARR-CADE	DECK 11, AFT	24 HOURS
CONNECT@SEA	DECK 4, MID	9:00 AM - 12:00 PM 1:00 PM - 4:00 PM 7:00 PM - 10:00 PM
DISNEY VACATION CLUB	DECK 4, MID	9:00 AM - 11:00 AM 2:30 PM - 10:00 PM
DISNEY VACATION PLANNING	DECK 4, MID	10:00 AM - 8:30 PM
GUEST SERVICES	DECK 3, MID	24 HOURS
HAIR BRAIDING	DECK 11, MID	9:00 AM - 9:30 PM
MEDICAL HEALTH CENTER	DECK 1, FWD	9:30 AM - 11:00 AM 4:30 PM - 7:00 PM
PORT SHOPPING DESK	DECK 4, MID	7:30 PM - 8:30 PM
PRELUDES	DECK 3, FWD	1:30 PM - 2:30 PM 5:45 PM - 8:45 PM 5:45 PM - 8:45 PM
SENSES SPA AND SALON	DECK 11, FWD	8:00 AM - 10:00 PM
SHUTTERS PHOTO GALLERY	DECK 4, MID	9:30 AM - 12:00 PM 7:30 PM - 11:00 PM
SHUTTERS DIGITAL	DECK 4, MID	9:30 AM - 12:00 PM 7:30 PM - 11:00 PM

SHOPPING

BIBBIDI BOBBIDI BOUTIQUE	DECK 5, MID	9:00 AM - 9:00 PM
MICKEY'S MAINSAIL	DECK 3, FWD	9:30 AM - 11:00 PM
SEA TREASURES	DECK 3, FWD	9:30 AM - 11:00 PM
VISTA GALLERY	DECK 4, MID	9:45 AM - 12:00 PM 1:00 PM - 5:00 PM 6:00 PM - 10:30 PM
WHITE CAPS	DECK 3, FWD	9:30 AM - 11:00 PM
WHIZITS & WHATZITS	DECK 11, MID	10:00 AM - 11:00 AM 12:00 PM - 4:00 PM 7:30 PM - 10:00 PM

DINNER MENU

Animator's Palate : Pacific Rim Cuisine
Enchanted Garden : Continental Market Cuisine
Royal Court : French Cuisine
Dining Times: 5:45pm & 8:15pm

DRINK OF THE DAY

Bahama Mama (Alcoholic)
Coco Bali (Non-Alcoholic)

WEATHER FORECAST

Today: Clear Skies
High: 72°F/22°C
Tomorrow: Partly Sunny
High: 74°F/23°C

DINING & LOUNGES

BREAKFAST

CABANAS CONTINENTAL	DECK 11, AFT	7:00 AM - 7:30 AM
CABANAS	DECK 11, AFT	7:30 AM - 11:30 AM
ROYAL COURT	DECK 3, MID	8:30 AM - 10:00 AM

LUNCH

CABANAS	DECK 11, AFT	11:45 AM - 2:00 PM
FILLMORE'S FAVORITES	DECK 11, MID	11:00 AM - 6:30 PM
LUIGI'S PIZZA	DECK 11, MID	11:00 AM - 6:30 PM
PALO BRUNCH (18+) (RESERVATIONS REQ. & NOM. FEE APPLIES)	DECK 12, AFT	10:00 AM - 12:30 PM
ROYAL COURT	DECK 3, MID	12:00 PM - 1:30 PM
TOW MATER'S GRILL	DECK 11, MID	11:00 AM - 11:00 PM

DINNER

ANIMATOR'S PALATE	DECK 3, AFT	5:45 PM & 8:15 PM
ENCHANTED GARDEN	DECK 2, MID	5:45 PM & 8:15 PM
ROYAL COURT	DECK 3, MID	5:45 PM & 8:15 PM
CABANAS TABLE SERVICE	DECK 11, AFT	6:30 PM - 8:30 PM
PALO (18+) (RESERVATIONS REQ. & NOM. FEE APPLIES)	DECK 12, AFT	6:00 PM - 8:30 PM
REMY (18+) (RESERVATIONS REQ. & NOM. FEE APPLIES)	DECK 12, AFT	6:00 PM - 8:30 PM

LATE NIGHT SNACKS

LA PIAZZA (18+)	DECK 4, AFT	10:45 PM - 11:45 PM
LUIGI'S PIZZA	DECK 11, MID	9:30 PM - 12:00 AM

ADDED FEATURES

BEVERAGE STATION	DECK 11, MID	24 HOURS
EYE SCREAM	DECK 11, MID	11:00 AM - 11:00 PM
ROOM SERVICE	DIAL 0	24 HOURS

ENTERTAINMENT - LOUNGES - BARS

Adults must be 21 and older to consume alcoholic beverages.

BON VOYAGE	DECK 3, MID	9:00 AM - 11:00 PM
COVE BAR (18+)	DECK 11, FWD	10:00 AM - 10:00 PM
COVE CAFE (18+)	DECK 11, FWD	6:30 AM - 12:00 AM
CURRENTS (18+)	DECK 13, FWD	10:00 AM - 11:30 PM
D LOUNGE	DECK 4, MID	SHOWTIMES
FROZONE TREATS	DECK 11, MID	10:00 AM - 6:00 PM
LA PIAZZA (18+ AFTER 9:00 P.M.)	DECK 4, AFT	12:00 PM - 12:00 AM
MERIDIAN (18+)	DECK 12, AFT	10:00 AM - 12:00 PM 5:00 PM - 12:00 AM
O'GILLS PUB (18+ AFTER 9:00 P.M.)	DECK 4, AFT	12:00 PM - 12:00 AM
OOH LA LA (18+)	DECK 4, AFT	5:30 PM - 12:00 AM
OUTLOOK	DECK 14, MID	
SKYLINE (18+)	DECK 4, AFT	6:00 PM - 12:30 AM
THE TUBE (18+ AFTER 9:00 P.M.)	DECK 4, AFT	7:00 PM - 8:30 PM 9:30 PM - 2:00 AM
VISTA CAFE	DECK 4, MID	7:00 AM - 11:00 PM
WAVES	DECK 12, AFT	10:00 AM - 6:00 PM

Public Health Advisory: Consuming raw or under-cooked meats, poultry, seafood, shellfish, or eggs may increase your risk for food borne illness, especially if you have certain medical condition.

GOOFY'S SPORTS

Digital Simulators

Sports Simulator
(Basketball, Baseball, Hockey, Football or Soccer) \$13 / half hr, \$22 / hr

Golf Simulator
\$28 / half hr, \$49 / hr

Reservations can be made at the Port Adventures Desk, Deck 5, Midship or at the Simulators, Deck 13, Aft.