

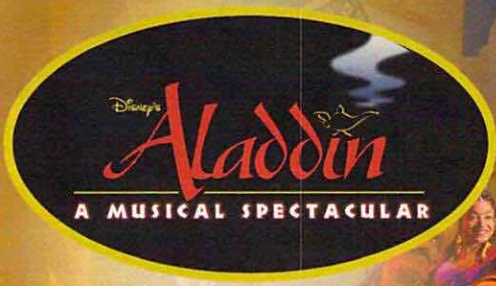
# PERSONAL NAVIGATOR

Sunrise 6:34 am Sunset: 6:18 pm  
Evening Attire: Formal

Today: Partly Sunny High: 76°F/24°C  
Tomorrow: Partly Cloudy High: 74°F/23°C

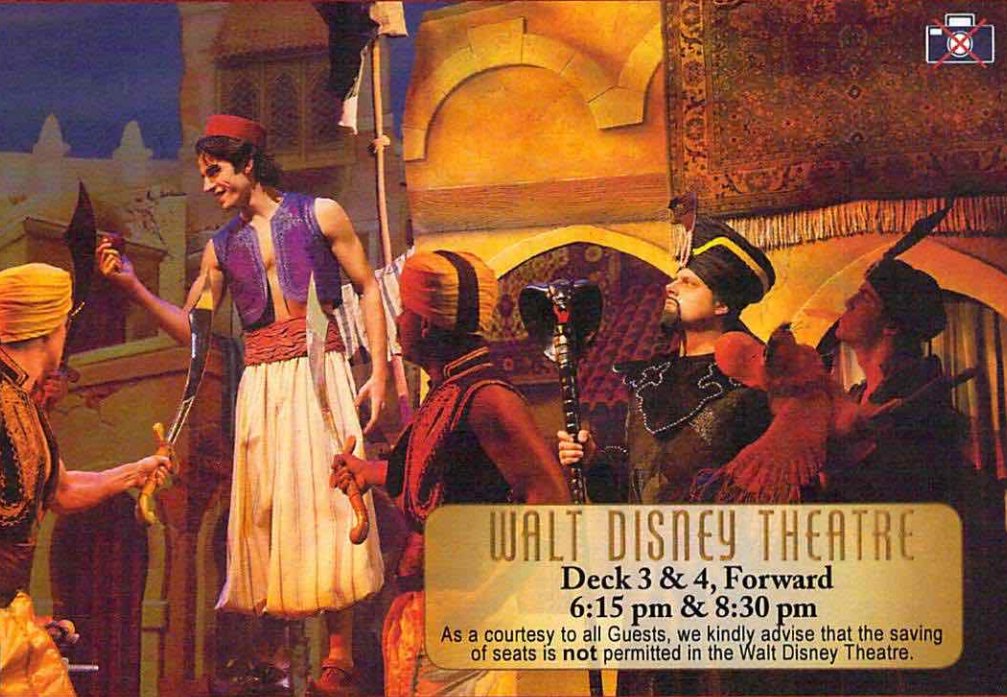
MONDAY, OCTOBER 10, 2016

DAY AT SEA



A fast-paced, musical comedy based on the beloved animated film. Aladdin, the "street rat" of Agrabah, meets a wise-cracking Genie, battles the evil Jafar, and falls in love with the beautiful and spirited Princess Jasmine. Disney storytelling at its best.

Assistance available at the entrance to the Walt Disney Theatre 30 minutes prior to show time.



**WALT DISNEY THEATRE**  
Deck 3 & 4, Forward  
6:15 pm & 8:30 pm  
As a courtesy to all Guests, we kindly advise that the saving of seats is **not** permitted in the Walt Disney Theatre.

## Disney FANTASY Fun Facts

**Tonnage:** 130,000 Gross Tons  
**Height:** 216 Feet  
**Length:** 1115 Feet

### Important Dates

**Name Announcement:** March 10, 2009  
**Steel Cutting:** March 16, 2010  
**Keel Laying:** February 11, 2011  
**Delivery:** February 9, 2012

Almost four football fields in length, the Disney Fantasy is longer than the height of the Eiffel Tower in Paris (1,063 feet). She is also longer than the height of New York City's famous Chrysler building (1,047 feet).

**The Disney Fantasy's Whistle**  
The Disney Fantasy's whistle, a prominent element of the "Sailing Away" deck party at the start of the cruise, is quite the musical talent. It's able to perform not just the first musical line of "When You Wish Upon a Star" but also the second line of the song ("makes no difference who you are") plus several measures of "Yo Ho (A Pirate's Life for Me)," "It's a Small World," "Be Our Guest," "Hi Diddle Dee Dee (An Actor's Life for Me)," "A Dream is a Wish," and "Do you want to build a Snowman".



### CAPTAIN'S RECEPTION

Enjoy live music and a cocktail while meeting some of the ship's officers.  
**Lobby Atrium, Deck 3, Midship,**  
**5:15 & 7:30 pm**  
Enjoy an exclusive photo opportunity with Captain Fabian at  
**5:30 & 7:30 pm, Lobby Atrium**

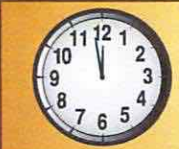
### Don't Miss:

**Good Morning Disney Fantasy**  
Channel 5 - Repeated from 5:00 am - 12:00 pm  
Tune in to channel 5 as your Cruise Director highlights the upcoming events and activities for the day.

**Anyone Can Cook: Sea Bass (18+)**  
D Lounge, Deck 4, Midship - 2:15 pm  
From our galley to yours. Join our chefs as they show you how to prepare delicious dishes.  
Today's Menu - Sea Bass.

**Formal Night After Party**  
D Lounge, Deck 4, Midship - 9:45 pm  
Join your Cruise Staff as we continue the party, with special appearances from the world famous Disney Characters.

**Variety Show: Magic Dave (18+)**  
The Tube, Deck 4, Aft - 9:45 pm & 10:45 pm  
Featuring the Magic & Comedy of Magic Dave, as he entertains you in this adult exclusive show.



### TIME ZONE CHANGE

Remember to turn your clocks **BACK 1 HOUR** upon retiring on **MONDAY** evening, or first thing **TUESDAY** morning.

## DINNER MENU

Animator's Palate : Pacific Rim Cuisine  
Enchanted Garden : Continental Market Cuisine  
Royal Court : French Cuisine

## DRINK OF THE DAY

Bahama Mama (Alcoholic)  
Coco Bali (Non Alcoholic)

### IMPORTANT NUMBERS

Fire/Security: 7-3001  
Medical Emergency: 7-3000  
Health Center: 7-1923

# ADULT ACTIVITY HIGHLIGHTS

## SENSES SPA FITNESS CLASSES & SEMINARS

*Pure Form Pilates* - Donald's Pool - 7:00 am  
*Fab Abs* - Senses Spa & Salon - 7:45 am  
*Body Sculpt Boot Camp* (Nom. Fee) - Senses Fitness Center - 8:30 am  
*Introduction to Acupuncture* - Senses Spa & Salon - 9:15 am  
*Detox for Health & Weight Loss* - Senses Spa & Salon - 10:30 am  
*How to Look Ten Years Younger Today* - Senses Spa & Salon - 11:30 am  
*Acupuncture Seminar: Arthritis Solutions* - Senses Spa & Salon - 1:30 pm  
*Good Feet Seminar: Walking In Comfort* - Senses Spa & Salon - 2:00 pm  
*Secrets to a Flatter Stomach* - Senses Spa & Salon - 2:30 pm  
*Non-Surgical Facelift Seminar* - Senses Spa & Salon - 3:15 pm  
*Tour De Cycle* (Sign-Up Required) - Senses Fitness Center - 4:00 pm  
*Complimentary Footprint Analysis* - Senses Spa & Salon - 5:00 pm  
*Total Body Conditioning* - Senses Spa & Salon - 6:00 pm



## TASTING CLASSES

*Chocolate Tasting* (21+) - Ooh La La - 12:15 pm  
*Martini Tasting* (21+) - Ooh La La - 1:00 pm  
*Champagne Tasting* (21+) - Ooh La La - 1:45 pm  
*Mixology* (21+) - Meridian - 3:00 pm  
*Tequila & Margarita Tasting* (21+) - Ooh La La - 4:30 pm  
*Whiskey Tasting* (21+) - Cove Cafe - 10:00 pm  
*Cognac Tasting* (21+) - Meridian - 10:30 pm  
 Please make reservations for tastings at Guest Services for a nominal fee.  
 Tasting Seminars are only for Guests 21 and older.

### 1820 SOCIETY: LUNCH

*Cabanas, Deck 11, Aft - 12:00 pm*  
 Get to know your fellow Society members over lunch.



### 1820 SOCIETY: MINI GOLF

*Goofy Golf, Deck 13, Aft - 3:45 pm*  
 Can you get a hole in one? Give it a try with some mini golf.

### 1820 SOCIETY: ICE CREAM SOCIAL

*Frozone Treats, Deck 11, Midship - 9:45 pm*  
 Join your fellow Society members for some ice cream and conversation.

## ART OF THE THEME SHOW TOUR

*Meridian, Deck 12, Aft - 9:00 am*  
 Imagineering and artistry of the Disney Fantasy. This tour is reserved for Guests 18 and over. Join us for a guided tour highlighting the design, Imagineering and artistry of the Disney Fantasy. This tour is reserved for Guests 18 and over.

## PIANO MEN TRIBUTE WITH AARON LOTZOW

*La Piazza, Deck 4, Aft - 7:30 pm*  
 Join Aaron Lotzow as he plays piano live for your listening pleasure.



# FUN FOR ALL AGES HIGHLIGHTS

## WAKE UP WITH DISNEY JUNIOR

*D Lounge, Deck 4, Midship - 8:30 am*  
 What happens when you experience unlimited fun with your favorite Disney Junior shows? You get an exciting dance party designed especially for preschoolers ages seven and under.



## DISNEY ANIMATION: CREATING A CHARACTER

*D Lounge, Deck 4, Midship - 9:45 am*  
 Go behind the scenes at Walt Disney Animation Studios as Walt Disney himself talks about his most famous characters, then learn the basic techniques of drawing your favorite pals in this fun and interesting enrichment program.



## TODDLER TIME

*Outlook, Deck 14, Midship - 10:30 am & 3:30 pm*  
 Join us for some fun activities that your toddler is sure to enjoy.

## DIAMOND JACKPOT BINGO

*Bingo Pre-Sales start at 11:00 am*  
*D Lounge, Deck 4, Midship - 11:15 am*  
 Join us for 4 cash prize games and your chance to win a diamond pendant! Everyone attending will also receive a FREE Island Charm courtesy of Diamonds International! Pre-Sales start 15 minutes prior to the game.



## DISNEY VACATION CLUB GROUP PREVIEW

*D Lounge, Deck 4, Midship - 12:30 pm*  
 Want to learn more about taking magical vacations year after year? Please see a Disney Vacation Club representative on Deck 4, Midship, or call 7-2805 from your stateroom phone for more information about our interactive group presentation.



## DISNEY TRIVIA

*O'Gills Pub, Deck 4, Aft - 2:30 pm*  
 Navigate your way through a round of questions to test how much you really know about Disney.

## \$5,000 MEGA JACKPOT SENSES SPA BINGO

*Bingo Pre-Sales start at 4:00 pm*  
*D Lounge, Deck 4, Midship - 4:15 pm*  
 Don't miss your chance to take home big money! 4 CASH prize games and great raffle prizes to be won! Complete the fourth game in 46 numbers or less and win the \$5,000 Mega Jackpot! Plus get Spa Prizes that will pamper you, including a mini facial and massages all courtesy of the Senses Spa and Salon. Pre-Sales start 15 minutes prior to game.



## MAGIC DAVE WORKSHOP (6+)

*The Tube, Deck 4, Aft - 7:30 pm*  
 Magic Dave teaches you the basics of magic in this fun family event.

# YOUTH ACTIVITIES HIGHLIGHTS

## DINE & PLAY

A convenience for families dining at 8:15 pm, our Youth Activities counselors will be available at 9:15 pm at the entrance of Royal Court, Enchanted Garden and Animator's Palate dining rooms to bring registered children to join the fun in the Youth Activity areas.



Deck 5, Midship (7-1440)  
(3-12 years old)

9:00 am - 12:00 am

### CRUISIN' WITH CRUSH

2:00 pm

Swim on by Disney's Oceaneer Club and join Crush in an undersea adventure you'll never forget.

### HEFFALUMP EXPODISHUN

4:30 pm

The Heffalump is missing! Help us find him before the Wozzles do!



Deck 5, Midship (7-1445)  
(3-12 years old)

9:00 am - 12:00 am

### GET THE HOOK

3:15 pm

A villainous villain has stolen Captain Hook's prized golden hook. Become a member of the Top Deck Detective Agency and help solve the clues to retrieve Hook's hook.

### PISTON CUP CHALLENGE

10:00 pm

It's Dinoco time and you're part of the pit crew! Design your own race car and see if you've got what it takes to end up in the winner's circle!



Deck 13, Midship (7-9743)  
(11-14 years old)

9:00 am - 1:00 am

### DISNEY ANIMATION: CREATING A CHARACTER

11:00 am

Go behind the scenes at Walt Disney Animation Studios as Walt Disney himself talks about his most famous characters, then learn the basic techniques of drawing Mickey and Donald in this fun and interesting enrichment program.

### BRAINS AND BRAWNS

2:30 pm

You will compete against each other to solve clues, take part in physical challenges, and reach the finish first.



Entrance on Deck 4, Forward (7-9418)  
(14-17 years old)

9:00 am - 2:00 am

### ZOMBIFIED

12:00 pm

A big movie producer is looking for zombies to help him film the finale to his latest masterpiece, Zombified.

### SPORTS DECK FUN

1:00 am

Take over the Sports Deck with some fun and friendly competition.

# BUENA VISTA THEATRE

Deck 4 & 5, Midship  
Today's Movies

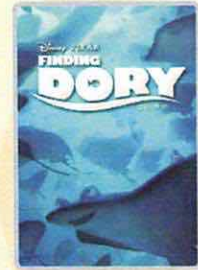


FAMILY MOVIE  
FUN TIME

8:30 am

Duration: 1 hr 48 mins

Rating: PG

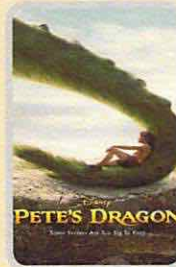


**DOLBY 3D**

12:45 pm

Duration: 1 hr 45 mins

Rating: PG



3:00 pm

Duration:

1 hr 42  
mins



5:30 pm & 8:00 pm

Duration: 2 hrs 4 mins

Rating: PG



**DOLBY 3D**

10:30 pm

Duration: 2 hrs 27 mins

Rating: PG-13



## FAMILY VARIETY ACT

Enjoy the Hypnosis and Comedy of Ricky Kalmon in this fun-filled show for the entire family.

*Walt Disney Theatre,  
Deck 3 & 4, Forward,  
2:00 pm*

(Doors open 15 minutes prior to show time)



## ADULT VARIETY ACT

Featuring the Magic & Comedy of Magic Dave, as he entertains you in this adult exclusive show.

*The Tube (18+),  
Deck 4, Aft,  
9:45 pm & 10:45 pm*

## YOUTH ACTIVITIES OPEN HOUSE

Open House is an opportunity for all to come and participate in a variety of exciting activities and free time in the Oceaneer Club, Oceaneer Lab, it's a small world nursery, Vibe and Edge throughout the cruise. During these times secured programming will still be offered in the other venue for those looking to check their children into care.

Disney's Oceaneer Lab: 7:00 pm - 8:30 pm

Edge: 9:00 am - 10:00 am & 6:00 pm - 7:30 pm

Vibe: 9:00 am - 10:00 am & 7:30 pm - 9:00 pm

# MORE TO ENJOY WHILE ONBOARD

## EASTERN CARIBBEAN

Disney Cruise Line offers a variety of sailings to exotic ports in the Caribbean, including port of Tortola, in the British Virgin Islands. Most voyages even include a stop at Disney Castaway Cay. Visit the Disney Vacation Planning desk, Deck 4, Midship, for more information. Disney Vacation Planning tends to get busy on the last day of sailing. Don't miss the opportunity to plan your next Disney vacation.

## DISNEY VACATION CLUB® GROUP PREVIEW

Want to learn more about taking magical vacations year after year? Please see a Disney Vacation Club representative on Deck 4, Midship, or call 7-2805 from your stateroom phone for more information about our interactive group presentation.

## PORT SHOPPING INFORMATION

Join your Port Shopping Guide, Nicole, to learn about the incredible tax & duty free shopping ashore this cruise. Everything from diamonds to t-shirts, Rolex to rum-cake! Port Shopping Talk, Buena Vista Theatre, Deck 4, Midship, 11:15 am. FREE Charm Bracelet for everyone who attends! Raffle to win OVER \$1000 in prizes & giveaways! Later, join Nicole as she gives insider tips on shopping for gemstones in the Caribbean at the Diamond & Gemstone Seminar, The Tube, Deck 4, Aft, 3:00 pm.

## Connect @ Sea

We are now offering a NEW and improved Internet service to stay connected on your cruise like no other in the industry! Internet packages range from \$0.25 per MB - \$89.00 (1000 MB package). For more information contact your Connect@Sea Expert or Guest Services onboard.

## ONBOARD AIRLINE CHECK IN

Stop by the Guest Services Desk, Deck 3, Midship to find out about enrolling in our Onboard Airline Check In Service.

## CASTAWAY CAY 5K REGISTRATION (10+)

Sign up today for the Castaway Cay 5K! Please visit the Port Adventures Desk or the Guest Services Desk to register at anytime prior to our arrival at Disney Castaway Cay. Please note that runners must be 10 years of age or older to participate.

## MIDSHIP DETECTIVE AGENCY

The puppies from 101 Dalmatians have gone missing! Use your special detective "badge" to track down the puppies and catch the villain who took them. Decks 2 & 5, Midship.



Disney Cruise Line



The best way to explore our ports of call is through the eyes of a Port Adventure. Why not swim with stingrays in Grand Cayman or explore the ruins in Cozumel.

Visit the **Port Adventures Desk, Deck 5, Midship**, for more information.

## SHOPPING

### BIBBIDI BOBBIDI BOUTIQUE

Young Princesses and Princes can get ready for a formal evening with a makeover at the Bibbidi Bobbidi Boutique. Make your reservations by visiting Bibbidi Bobbidi Boutique, Deck 5, Midship or dialing extension 7-9438. Limited space available.

### SOPHIA FIORI GUESS THE CARAT WEIGHT

Whoever guesses closest wins a Sophia Fiori fine jewelry piece! Winner announced tonight at 7:30 pm. Must be present to win. White Caps, Deck 3, Forward.

### STYLISH TAG HEUER WATCHES

TAG Heuer is one of the largest and fastest growing Swiss brands and is in a constant quest for innovation and high precision. Stop by White Caps today where you'll discover the luxury and style of a TAG Heuer watch. White Caps, Deck 3, Forward.

### THOMAS KINKADE: HIDDEN CHARACTER CHALLENGE!

Known as the "Painter of Light," Thomas Kinkade is one of Disney's most celebrated artists having created an array of enchanting artwork. Stop by the Vista Gallery today to view his unique collection of paintings featuring some of your favorite Disney characters! Also, take the time to try and find all of the hidden Disney characters scattered throughout his paintings. Are you up to the challenge? Deck 4, Midship.

### DISNEY PLUSH

Cuddle up with some of your favorite Disney pals when you swing by Mickey's Mainsail and discover a lovable, soft Plush. From Stitch to Mickey and Minnie, you'll be sure to find a new cuddly friend to take home. Deck 3, Forward.

### FRAGRANCE OF THE DAY

Stop by White Caps today and see if our selected scent suits your style! Deck 3, Forward.



## SPA SPECIAL: IONITHERMIE

Would you like to lose between 1 - 8 inches?  
Speed up your metabolism?  
Firm your muscle tone?  
Improve appearance of cellulite?  
If so, then Ionithermie is the best treatment for you!  
50 minutes for \$155

Senses Spa & Salon, Deck 11, Forward, Extension 7-1465

## SOPHIA FIORI DIAMONDS

Sophia Fiori, Hollywood's first choice in diamonds has boarded the *Disney Fantasy* Cruise Ship to premiere their new collection of white & colored diamonds worn at the Oscars, Golden Globes, Emmy and Grammy Awards.



WHITE CAPS  
DECK 3, FORWARD



## FORMAL PORTRAITS TONIGHT!

Now that the family is dressed up and ready to enjoy the evening, capture the memories in your formal attire by visiting our professional portrait studios located in the Lobby Atrium, Deck 3, Midship.

5:15 pm - 6:00 pm  
7:15 pm - 8:30 pm  
9:30 pm - 10:15 pm

\*Please note that photos are available for viewing on our interactive photo kiosks approximately five hours after being taken and are only available for purchase during this cruise. Photo sizes are preset and cannot be changed.

## IMPORTANT INFORMATION

### Security Notice

All Guests (including children) who wish to disembark the ship are required to present their key to the World card at the gangway. A photo ID is also required for these Guests who are 18 years of age or older. Guests under the age of 18 are required to have a parent, guardian or other responsible adult sign an authorization form at the Guest Service Desk if they wish to go ashore unaccompanied or with any adult from another stateroom.

### Insect Repellent Advisory

Protect against mosquito bites and related illnesses when going ashore. Insect repellent is available for purchase in White Caps. When using both sunscreen and insect repellent, use sunscreen first and apply insect repellent on top of sunscreen.

### Cold and Flu Reminder

Please wash hands frequently and thoroughly, particularly before meals. Contact the Health Center by dialing 7-1923, should anyone in your party become ill.

### Corridor Quiet Hours

As a courtesy to all our Guests, please recognize quiet hallway hours from 10:00 pm til 8:00 am

### Inclement Weather

For the safety of all Guests, outdoor events may be changed due to unforeseen weather conditions.

### Environmental Message

With Disney's commitment to the Environment, please refrain from throwing anything over the Ship's side. Thank you!

### No Reserved Seats Policy

As a courtesy to all our Guests, we kindly advise that the saving of seats is not permitted in the Walt Disney Theatre, and the saving of the sun loungers is not permitted on Deck 11, 12, and 13. Items left unattended will be returned to lost and found at Guest Services, Deck 3 Midship.

### Smoking

For the comfort of our Guests, the following areas are designated as smoking areas:

\*Deck 13, forward, port side by Currents  
\*Deck 12, aft, port side outdoor area that is accessible through the Meridian Lounge  
\*Deck 4, aft, port side from 6:00 pm to 6:00 am only (all of Deck 4 is non-smoking from 6:00 am to 6:00 pm)

Smoking is prohibited inside all Guest staterooms and on stateroom verandahs. Guests found smoking in their staterooms or on their verandahs will be charged a \$250 stateroom recovery fee. Electronic cigarettes may only be used in designated smoking areas.

### Walt Disney Theatre

Theatrical performances may use artificial fog, strobe lights, pyrotechnics and other special effects. For the safety of our performers and the comfort of those around you, the use of any photography, video recording device or any electronic equipment is prohibited.

### Verandah Safety

Please do not leave any combustible materials on your balcony when not present in your stateroom for safety reasons.

Morning	8:30	8:45	9:00	9:15	9:30	9:45	10:00	10:15	10:30	10:45	11:00	11:15	11:30	11:45	12:00	12:15	12:30	12:45	1:00	1:15	1:30			
FUNNEL VISION	A Goofy Movie (G) Funnel Vision						Frozen (PG) Funnel Vision						Movie Challenge Poolside Funnel Vision											
BUENA VISTA THEATRE	Family Movie Fun Time: Zootopia (PG) Duration: 1 Hour 48 Minutes												Port Shopping Talk			Finding Dory (PG) <b>DOLBY 3D</b> Duration: 1 Hour 45 Minutes								
CHARACTERS	Woody Lobby Atrium (V)			Jessie Lobby Atrium (V)			Woody Lobby Atrium (V)			Jessie Lobby Atrium (V)			Peter Pan Dk 4, Balcony			Jake Dk 4, Balcony								
							Mickey Dk 4, Balcony									Cpt. Hook Dk 4, Balcony			Sofia Dk 4, Balcony					
FUN FOR ALL AGES	Disney Junior D Lounge		Family Crafts La Piazza			Disney Trivia La Piazza			Bingo Pre Sales			Diamond Jackpot BINGO D Lounge			Movie Challenge Poolside Deck Stage			Mickey 200 The Tube (Limited Availability)						
	Walking Ship Tour Preludes						ESPN Dream Team Draft Day - Football O'Gills Pub						Family Crafts La Piazza						Disney Vacation Club Group Preview D Lounge					
ADULTS	Friends of Bill W. Outlook		Art of The Theme Show Tour Meridian			Pub Quiz O'Gills Pub			Crafts: Tile Coasters O'Gills Pub			Port Shopping Talk Buena Vista Theatre						Animation Class The Tube			Crafts: Origami O'Gills Pub			
	Boot Camp (Nom. Fee) Senses Fitness Center														Cruisin' Solo Lunch Royal Court			Selkie LIVE Cove Cafe						
VIBE 14-17 YEARS OLD	Youth Activities Open House						Open for Teens			Coffee Break			Disney Scene It			Zombified								
EDGE 11-14 YEARS OLD	Youth Activities Open House						GAGA Ball						Disney Animation: Creating a Character						Guesstures			Marshmallow Olympics		
OCEANEER LAB 3-12 YEARS OLD	Stitch's Adventure Squad						Super Sloppy Science						Wacky Relays						Magic PlayFloor					
OCEANEER CLUB 3-12 YEARS OLD	Pre-School Fun (3-5 Years Old)						Magic Show						Aloha Luau						Lunch					
	Little Einstein's Adventure																		Mickey's Puzzle Playtime					

Symbol for activities that will be repeated during the cruise

Afternoon	1:45	2:00	2:15	2:30	2:45	3:00	3:15	3:30	3:45	4:00	4:15	4:30	4:45	5:00	5:15	5:30	5:45	6:00	6:15	6:30	6:45			
FUNNEL VISION	Big Hero 6 (PG) <b>Open Captioning</b> Funnel Vision												Frozen Fever (G) Funnel Vision			Brother Bear (G) Funnel Vision								
BUENA VISTA THEATRE	Pete's Dragon (PG) Duration: 1 Hour 42 Minutes						The Queen of Katwe (PG) Duration: 2 Hours 4 Minutes																	
CHARACTERS	Doc McStuffins Dk 4, Balcony			Minnie Dk 4, Balcony			Goofy Dk 4, Balcony			Mickey & Minnie Dk 4, Balcony			Chip & Dale Preludes			Goofy Preludes								
FUN FOR ALL AGES	The Comedy & Hypnosis of RICKY KALMON Walt Disney Theatre			Pirate Line Dancing Lobby Atrium			Toddler Time Outlook			Bingo Pre Sales			\$5,000 Mega Jackpot Senses Spa BINGO D Lounge			Captain's Welcome Reception Lobby Atrium			Live Music with The Royal Duo Lobby Atrium			Aaddin A MUSICAL SPECTACULAR Walt Disney Theatre		
	Crafts: Origami Creations La Piazza			Disney Trivia O'Gills Pub			Disney Tunes Trivia La Piazza			Who Am I? The Tube			Ice Breakers The Tube			Live Music with Daria & Roberto Lobby Atrium			Family Crafts D Lounge					
ADULTS	Brainteasers Trivia O'Gills Pub			ANYONE CAN COOK D Lounge - Sea Bass			Diamond & Gemstone Seminar The Tube			1820 Society: Mini Golf Goofy Golf			Tequila & Margarita Tasting (21+) Ooh La La			Footprint Analysis Senses Spa & Salon			Total Body Conditioning Senses Spa & Salon					
	Dream Team Draft Day - Football O'Gills Pub			Live Guitar Cove Cafe			Movie Quotes Trivia O'Gills Pub			Footprint Analysis Senses Spa & Salon														
VIBE 14-17 YEARS OLD	Zombified			Dive into DJ'ing			Scavenger Hunt			ESPN Dream Team Draft Day - Football			Football Tournament			Brain Teasers			Cards Tournament					
EDGE 11-14 YEARS OLD	Craft Corner			Brains and Brawns			Anyone Can Cook			Sports Deck Fun			Youth Activities Open House											
OCEANEER LAB 3-12 YEARS OLD	Anyone Can Cook						Get the Hook			4 Square Competition			Disney Animation: Creating a Character											
OCEANEER CLUB 3-12 YEARS OLD	Cruisin' with Crush			Scavenger Hunt			Tinker Bell's Talent Show			Heffalump Expodishun			Dinner											

Fold along the dotted lines and take me with you so you don't miss any of the fun!

Evening	7:00	7:15	7:30	7:45	8:00	8:15	8:30	8:45	9:00	9:15	9:30	9:45	10:00	10:15	10:30	10:45	11:00	11:15	11:30	11:45	12:00			
FUNNEL VISION	NFL Football (Subject to Satellite availability) Funnel Vision																							
BUENA VISTA THEATRE	The Queen of Katwe (PG) Duration: 2 Hours 4 Minutes												Captain America: Civil War (PG-13) <b>DOLBY 3D</b> Duration: 2 Hours 27 Minutes											
CHARACTERS	Mickey Mouse Dk 4, Balcony						Mickey & Minnie La Piazza						Donald Preludes			Daisy Preludes								
FUN FOR ALL AGES	Hula Hoop Jam Oceaneer Lab			Captain's Welcome Reception Lobby Atrium			Aaddin A MUSICAL SPECTACULAR Walt Disney Theatre			Formal Night After Party D Lounge			Family Karaoke D Lounge											
	Magic Dave Workshop (6+) The Tube			Family Dance Party D Lounge			Family Crafts D Lounge			Live Music with Daria & Roberto Lobby Atrium			Live Music with Daria & Roberto Lobby Atrium											
ADULTS	50's and 60's Music Trivia O'Gills Pub			Piano Men Tribute with Aaron Lotzow La Piazza			Club DJ Pulse The Tube			Variety: Magic Dave The Tube			The Quest The Tube			Variety: Magic Dave The Tube			Going Underground with Club DJ Pulse The Tube					
	Team Trivia O'Gills Pub			Team Trivia O'Gills Pub			Live Violin with Albina Romanova La Piazza																	
VIBE 14-17 YEARS OLD	Cards Tournament			Youth Activities Open House						Pump It Up			That's Hilarious			Gender Wars								
EDGE 11-14 YEARS OLD	Open House			Magic Show			Pictionary			Video Game Challenge			Gender Wars			Tween Choice								
OCEANEER LAB 3-12 YEARS OLD	Youth Activities Open House						Lights, Camera, Improv!						Piston Cup Challenge											
OCEANEER CLUB 3-12 YEARS OLD	Hula Hoop Jam			Anyone Can Cook			Magic PlayFloor			Pluto's Pajama Party			Cartoon Time											
	Dress Up Fun			Once Upon a Time																				

YOUTH ACTIVITIES OPEN HOUSE  
A non-secured program with activities for families, adults and children to enjoy together.



MONDAY, OCTOBER 10, 2016 - DAY AT SEA

# BUENA VISTA THEATRE

Deck 4 & 5, Midship



**FAMILY MOVIE FUN TIME** **DOLBY 3D**

8:30 am	12:45 pm	3:00 pm	5:30 pm & 8:00 pm	10:30 pm
Duration: 1 hr 48 mins	Duration: 1 hr 45 mins	Duration: 1 hr 42 mins	Duration: 2 hrs 4 mins	Duration: 2 hrs 27 mins
Rating: PG	Rating: PG	Rating: PG	Rating: PG	Rating: PG-13

## Character Appearances

<b>WOODY</b> Lobby Atrium (V) 9:15 am & 10:15 am	<b>STITCH</b> Deck 4, Balcony - 3:30 pm
<b>JESSIE</b> Lobby Atrium (V) 9:45 am & 10:45 am	<b>GOOFOY</b> Deck 4, Balcony - 4:00 pm Preludes - 6:00 pm
<b>MICKEY MOUSE</b> Deck 4, Balcony 11:30 am, 2:30 pm & 7:30 pm	<b>MICKEY &amp; MINNIE</b> Deck 4, Balcony 5:15 pm & 9:30 pm
<b>PETER PAN</b> Deck 4, Balcony - 12:00 pm	<b>CHIP &amp; DALE</b> Preludes - 5:30 pm
<b>CAPTAIN HOOK</b> Deck 4, Balcony - 12:30 pm	<b>DONALD DUCK</b> Preludes - 9:30 pm
<b>JAKE - THE NEVERLAND PIRATE</b> Deck 4, Balcony - 1:00 pm	<b>DAISY DUCK</b> Preludes - 10:00 pm
<b>PRINCESS SOFIA</b> Deck 4, Balcony - 1:30 pm	
<b>DOC MCSTUFFINS</b> Deck 4, Balcony - 2:00 pm	
<b>MINNIE MOUSE</b> Deck 4, Balcony - 3:00 pm Preludes - 7:30 pm	

(H) Hallway - (S) Starboard Side - (P) Port Side - (V) Vestibule

For details of daily Disney character appearances, refer to the character line on your Navigator Grid, or the digital character board in the Lobby Atrium.

### IMPORTANT NUMBERS

Fire/Security: 7-3001  
Medical Emergency: 7-3000  
Health Center: 7-1923

### SHIP DIRECTORY

#### YOUTH ACTIVITIES

DISNEY'S OCEANEER CLUB	DECK 5, MID	9:00 AM - 12:00 AM
DISNEY'S OCEANEER LAB	DECK 5, MID	9:00 AM - 12:00 AM
EDGE	DECK 13, MID	9:00 AM - 1:00 AM
VIBE	DECK 4, FWD	9:00 AM - 2:00 AM
IT'S A SMALL WORLD NURSERY	DECK 5, MID	9:00 AM - 11:30 PM

#### POOLS & MORE

\* Children under 12 must have adult supervision in pool areas.

AQUADUCK	DECK 12, MID	9:00 AM - 10:00 PM
AQUALAB	DECK 12, AFT	9:00 AM - 6:00 PM
DONALD'S POOL	DECK 11, MID	9:00 AM - 10:00 PM
MICKEY'S POOL	DECK 11, MID	9:00 AM - 10:00 PM
MICKEY'S SLIDE	DECK 11, MID	9:00 AM - 6:00 PM
NEMO'S REEF	DECK 11, MID	9:00 AM - 6:00 PM
QUIET COVE POOL (18+)	DECK 11, FWD	8:00 AM - 11:00 PM
SATELLITE FALLS (18+)	DECK 13, FWD	6:00 AM - 8:00 PM

Please note, "selfie sticks" are not permitted in the pools or on the slides.

Complimentary pool vests are available for children to use in the pools onboard. They are located on the pool deck.

#### RECREATION

GOLF/SPORTS SIMULATORS	DECK 13, AFT	9:00 AM - 6:00 PM
GOOFY GOLF	DECK 13, AFT	8:00 AM - 10:00 PM
GOOFOY'S SPORTS DECK	DECK 13, AFT	8:00 AM - 6:00 PM
MIDSHIP DETECTIVE AGENCY	DECKS 2 & 5, MID	
PORT ADVENTURES DESK	DECK 5, MID	9:00 AM - 5:00 PM 7:00 PM - 8:30 PM

SENSES FITNESS CENTER (18+) DECK 11, FWD

#### GENERAL INFORMATION

ARR-CADE	DECK 11, AFT	24 HOURS
CONNECT@SEA	DECK 4, MID	9:00 AM - 12:00 PM 3:00 PM - 8:30 PM
DISNEY VACATION CLUB	DECK 4, MID	10:00 AM - 1:00 PM 2:30 PM - 10:00 PM
DISNEY VACATION PLANNING	DECK 4, MID	10:00 AM - 8:30 PM
GUEST SERVICES	DECK 3, MID	24 HOURS
HAIR BRAIDING	DECK 11, MID	9:00 AM - 9:30 PM
MEDICAL HEALTH CENTER	DECK 1, FWD	9:30 AM - 11:00 AM 4:30 PM - 7:00 PM
PORT SHOPPING DESK	DECK 4, MID	7:30 PM - 8:30 PM
PRELUDES	DECK 3, FWD	1:30 PM - 2:30 PM 5:45 PM - 8:45 PM
SENSES SPA AND SALON	DECK 11, FWD	8:00 AM - 10:00 PM
SHUTTERS PHOTO GALLERY	DECK 4, MID	9:30 AM - 12:00 PM 7:30 PM - 11:00 PM
SHUTTERS DIGITAL	DECK 4, MID	9:30 AM - 12:00 PM 7:30 PM - 11:00 PM

#### SHOPPING

BIBBIDI BOBBIDI BOUTIQUE	DECK 5, MID	9:00 AM - 9:00 PM
MICKEY'S MAINSAIL	DECK 3, FWD	9:30 AM - 11:00 PM
QUACKS	DECK 11, MID	
SEA TREASURES	DECK 3, FWD	9:30 AM - 11:00 PM
VISTA GALLERY	DECK 4, MID	9:45 AM - 10:30 PM
WHITE CAPS	DECK 3, FWD	9:30 AM - 11:00 PM
WHOZITS & WHATZITS	DECK 11, MID	10:00 AM - 4:00 PM 7:00 PM - 10:00 PM

<b>DINNER MENU</b>	Animator's Palate : Pacific Rim Cuisine	<b>DRINK OF THE DAY</b> Bahama Mama (Alcoholic) Coco Bali (Non Alcoholic)	<b>WEATHER FORECAST</b> Today: Partly Sunny High: 76°F/24°C Tomorrow: Partly Cloudy High: 74°F/23°C
	Enchanted Garden : Continental Market Cuisine		
	Royal Court : French Cuisine		
Dining Times: 5:45pm & 8:15pm		<b>Evening Attire: Formal</b>	

### DINING & LOUNGES

#### BREAKFAST

CABANAS CONTINENTAL	DECK 11, AFT	7:00 AM - 7:30 AM
CABANAS	DECK 11, AFT	7:30 AM - 11:30 AM
ROYAL COURT	DECK 3, MID	8:30 AM - 10:00 AM

#### LUNCH

CABANAS	DECK 11, AFT	11:45 AM - 2:00 PM
FILLMORE'S FAVORITES	DECK 11, MID	11:00 AM - 6:30 PM
LUIGI'S PIZZA	DECK 11, MID	11:00 AM - 6:30 PM
PALO BRUNCH (18+) (RESERVATIONS REQ. & NOW FEE APPLIES)	DECK 12, AFT	10:00 AM - 12:30 PM
ROYAL COURT	DECK 3, MID	12:00 PM - 1:30 PM
TOW MATER'S GRILL	DECK 11, MID	11:00 AM - 11:00 PM

#### DINNER

ANIMATOR'S PALATE	DECK 3, AFT	5:45 PM & 8:15 PM
ENCHANTED GARDEN	DECK 2, MID	5:45 PM & 8:15 PM
ROYAL COURT	DECK 3, MID	5:45 PM & 8:15 PM
CABANAS TABLE SERVICE	DECK 11, AFT	6:30 PM - 8:30 PM
PALO (18+) (RESERVATIONS REQ. & NOW FEE APPLIES)	DECK 12, AFT	6:00 PM - 8:30 PM
REMY (18+) (RESERVATIONS REQ. & NOW FEE APPLIES)	DECK 12, AFT	6:00 PM - 8:30 PM

#### LATE NIGHT SNACKS

LA PIAZZA (18+)	DECK 4, AFT	10:45 PM - 11:45 PM
LUIGI'S PIZZA	DECK 11, MID	9:30 PM - 12:00 AM

#### ADDED FEATURES

BEVERAGE STATION	DECK 11, MID	24 HOURS
EYE SCREAM	DECK 11, MID	11:00 AM - 11:00 PM
ROOM SERVICE	DIAL 0	24 HOURS

#### ENTERTAINMENT - LOUNGES - BARS

Adults must be 21 and older to consume alcoholic beverages.

BON VOYAGE	DECK 3, MID	10:00 AM - 11:00 PM
COVE BAR (18+)	DECK 11, FWD	10:00 AM - 10:00 PM
COVE CAFE (18+)	DECK 11, FWD	6:30 AM - 12:00 AM
CURRENTS (18+)	DECK 13, FWD	10:00 AM - 11:00 PM
D LOUNGE	DECK 4, MID	SHOWTIMES
FROZONE TREATS	DECK 11, MID	10:00 AM - 6:00 PM
LA PIAZZA (18+ AFTER 9:00 P.M.)	DECK 4, AFT	12:00 PM - 12:00 AM
MERIDIAN (18+)	DECK 12, AFT	10:00 AM - 12:00 AM
O'GILLS PUB (18+ AFTER 9:00 PM)	DECK 4, AFT	12:00 PM - 12:00 AM
OQH LA LA (18+)	DECK 4, AFT	5:30 PM - 12:00 AM
OUTLOOK	DECK 14, MID	
SKYLINE (18+)	DECK 4, AFT	5:30 PM - 12:30 AM
THE TUBE (18+ AFTER 9:00 P.M.)	DECK 4, AFT	7:00 PM - 8:30 PM 9:30 PM - 2:00 AM
VISTA CAFE	DECK 4, MID	7:00 AM - 11:00 PM
WAVES	DECK 12, AFT	10:00 AM - 6:00 PM

Public Health Advisory: Consuming raw or under-cooked meats, poultry, seafood, shellfish, or eggs may increase your risk for food borne illness, especially if you have certain medical condition.



### TIME ZONE CHANGE

Remember to turn your clocks **BACK 1 HOUR** upon retiring on **MONDAY** evening, or first thing **TUESDAY** morning.