

# PERSONAL NAVIGATOR

THURSDAY, SEPTEMBER 8, 2016

Sunrise 6:44 am Sunset: 7:09 pm  
Evening Attire: Optional Dress Up

Today: Partly Sunny High: 84°F/29°C  
Tomorrow: Sunny High: 86°F/30°C

DAY AT SEA

## Disney's Believe

Genie from Aladdin and many of Disney's most beloved magic makers take a father on a magical journey to show him that anything is possible if you just believe.

WALT DISNEY THEATRE  
Deck 3 & 4, Forward  
6:15 pm & 8:30 pm

As a courtesy to all Guests, we kindly advise that the saving of seats is **not** permitted in the Walt Disney Theatre.

Assistance available at the entrance to the Walt Disney Theatre 30 minutes prior to show time.

## Disney FANTASY Fun Facts

While the cute baby elephant, Dumbo serves as a fantastic stern character, in real life he would have to gather 24,266 other adult male African elephants to match the weight of the Disney Fantasy.

A "light point" is shipbuilders' lingo for anything that's a light. There are approximately 80,000 light points on the Disney Fantasy – "double the normal number for a ship this size," according to Meyer Werft, the shipyard in Germany where the Disney Fantasy was built. The large number is the result of Disney's flair for theatrical experiences – accomplished primarily with LEDs and other "environmentally friendly" lighting.

Looking upward in the ship's Lobby Atrium brings Guest's eye-to-crystal with a glowing piece of "Art Nouveau-inspired jewelry" – a cascading chandelier flowing downward from a massive stained-glass flourish on the ceiling in peacock hues of greens and blues. The chandelier itself is more than 10 feet in diameter, a one-of-a-kind work of art evoking a peacock in stained glass and more than 60,000 clear Swarovski crystal beads.

### Debark Talk Broadcast

Important information regarding disembarkation procedures for your journey home will be covered in this debarkation briefing. The broadcast will be shown continuously on channel 5 from 12:00 pm today on your stateroom television for your convenience.

## DINNER MENU

Animator's Palate : Captains Gala  
Enchanted Garden : Captains Gala  
Royal Court : Captains Gala

HALLOWEEN ON THE HIGH SEAS

## The Pumpkin Tree

### HALLOWEEN CEREMONY

The Pumpkin Tree has bloomed, but there is still one more surprise. Join us in the Lobby Atrium for some frightening fun, as we celebrate Halloween with a spooky ceremony that will have you screaming with ghoulish delight.

Lobby Atrium,  
Deck 3, Midship,  
7:30 pm

Disney Cruise Line  
PORT ADVENTURES

Disney's private island Castaway Cay not only offers a terrific family beach day, but many other excursions and rentals to compliment. Snorkeling, bike and float rentals, parasailing plus much more, means that there is something for everyone at Disney Castaway Cay. To make your reservation, visit the Port Adventures Desk, Deck 5, Midship.

## Don't Miss:

### Good Morning Disney Fantasy

Channel 5 - Repeated from 5:00 am - 12:00 pm  
Tune in to channel 5 as your Cruise Director highlights the upcoming events and activities for the day.

### Captain's Signing

White Caps, Deck 3, Forward - 12:15 pm  
Meet the Master of the Disney Fantasy and have your cruise memories signed.

### Towel Folding

The Tube, Deck 4, Aft - 2:15 pm  
Learn to create those amazing towel creatures you've seen in your stateroom all cruise long.

### Officer Pin Trading

Preludes, Deck 3, Midship - 7:30 pm  
Come trade pins with the Officers of the Disney Fantasy.

### The Nightmare Before Christmas - (PG)

Walt Disney Theatre, Deck 3, Forward - 10:15 pm  
Pumpkin King Jack Skellington longs to spread the joy of Christmas. But his merry mission puts Santa in jeopardy and creates a nightmare for good little boys and girls everywhere.

## DRINK OF THE DAY

High Tide (Alcoholic)  
Passion Cream Freeze (Non-Alcoholic)

### IMPORTANT NUMBERS

Fire/Security: 7-3001  
Medical Emergency: 7-3000  
Health Center: 7-1923



# ADULT ACTIVITY HIGHLIGHTS

## SENSES SPA FITNESS CLASSES & SEMINARS

*Yoga* - Donald's Pool - 7:00 am  
*Fab Abs* - Senses Spa & Salon - 7:45 am  
*Body Sculpt Boot Camp* (Nom. Fee) - Senses Fitness Center - 8:30 am  
*Secrets to a Flatter Stomach* - Senses Spa & Salon - 10:30 am  
*How to Look Ten Years Younger Today* - Senses Spa & Salon - 11:30 am  
*Acupuncture Pain Relief* - Senses Spa & Salon - 1:30 pm  
*Good Feet Seminar: Walking In Comfort* - Senses Fitness Center - 2:00 pm  
*Detox for Health & Weight Loss* - Senses Spa & Salon - 2:30 pm  
*Tighten, Lift and Contour with Thermage* - Senses Spa & Salon - 3:15 pm  
*Tour De Cycle* (Sign-Up Required) - Senses Fitness Center - 4:00 pm  
*Complimentary Footprint Analysis* - Senses Spa & Salon - 5:00 pm  
*Total Body Conditioning* - Senses Spa & Salon - 6:00 pm



## TASTING CLASSES

*Chocolate & Liquor Tasting* (21+) - Ooh La La - 12:15 pm  
*Rum Tasting* (21+) - Meridian - 1:00 pm  
*Stem to Stern Wine Tasting* (21+) - Ooh La La - 1:45 pm  
*Mixology* (21+) - Meridian - 3:00 pm  
*Amari Tasting* (21+) - La Piazza - 4:15 pm  
*Tequila & Margarita Tasting* (21+) - Ooh La La - 4:30 pm  
 Please make reservations for tastings at Guest Services for a nominal fee.  
 Tasting Seminars are only for Guests 21 and older.

## 1820 SOCIETY: LUNCH

*Cabanas, Deck 11, Aft - 12:00 pm*  
 Get to know your fellow Society members over lunch.



## 1820 SOCIETY: 2000'S MUSIC CHALLENGE

*O'Gills Pub, Deck 4, Aft - 5:00 pm*  
 Join your Cruise Staff as we navigate our way through the music of the 2000's.

## 1820 SOCIETY: ICE CREAM SOCIAL

*Frozone Treats, Deck 11, Midship - 9:45 pm*  
 Join your fellow Society members for some ice cream and conversation.

## ESPN DREAM TEAM DRAFT DAY - FOOTBALL

*O'Gills Pub, Deck 4, Aft - 11:15 am*  
 Join the "Commissioner" and engage in this interactive fantasy football draft unlike anything you've ever seen! Can YOU draft the greatest football team of all-time?

## LIVE GUITAR WITH SELKIE

*Cove Cafe, Deck 11, Forward - 12:00 pm, 1:30 pm & 2:45 pm*  
 Join Selkie as she plays live for your listening pleasure.

## 90'S MUSIC TRIVIA

*O'Gills Pub, Deck 4, Aft - 7:30 pm*  
 "If you Wannabe" the winner, then join us as we test your 90's music knowledge.

## ICE BREAKERS

*The Tube, Deck 4, Aft - 10:15 pm*  
 Join you Club Host for a night full of unpredictable fun.



# FUN FOR ALL AGES HIGHLIGHTS



## FAMILY MOVIE FUN TIME: FINDING DORY - (PG)

*Buena Vista Theatre, Deck 4 & 5, Midship - 8:30 am*  
 Come join us for a special opportunity to enjoy Finding Dory in the Buena Vista Theatre. We will leave some lights on and turn the volume down as audience members are welcome to talk, leave their seats, move about and (most importantly) have fun!



## JAKE & THE NEVERLAND PIRATES

*D Lounge, Deck 4, Midship - 9:15 am*  
 A'Ho! there mates, join us for an adventure in D Lounge with Jake and the Neverland Pirates.



## DISNEY ANIMATION: STAGING A SCENE

*D Lounge, Deck 4, Midship - 9:45 am*  
 Go behind the scenes at Walt Disney Animation Studios and learn how basic poses, silhouette, and placement (long shot, medium shot, close-up) enhance animation storytelling. Then, participate in a drawing exercise where you make the choices to communicate a story in this fun and fascinating enrichment program.

## TODDLER TIME

*Outlook, Deck 14, Midship - 10:30 am & 3:30 pm*  
 Join us for some fun activities that your toddler is sure to enjoy.



## \$10,000 MEGA JACKPOT BINGO

*Bingo Pre-Sales start at 11:00 am*  
*D Lounge, Deck 4, Midship - 11:15 am*  
 It's Big, it's Massive, it's Supersized! It's \$10,000 MEGA Jackpot Bingo! Take home \$10,000 if you can cover your card in 46 numbers or less. If not, we carry on to play for the biggest cash prize of the session. Pre-Sales start 30 minutes prior to game.



## DISNEY VACATION CLUB GROUP PREVIEW

*D Lounge, Deck 4, Midship - 12:30 pm & 4:15 pm*  
 Want to learn more about taking magical vacations year after year? Please see a Disney Vacation Club representative on Deck 4, Midship, or call 7-2805 from your stateroom phone for more information about our interactive group presentation.



## ANYONE CAN COOK: APPLE STRUDEL

*D Lounge, Deck 4, Midship - 1:45 pm*  
 From our galley to yours. Join our chefs as they show you how to prepare delicious dishes. Today's Menu - Apple Strudel.



## DISNEY JUNIOR PIRATE & PRINCESS DANCE PARTY

*D Lounge, Deck 4, Midship - 3:15 pm*  
 Calling all Pirates and Princesses! Come join us for a family dance party featuring music and fun activities from Jake & the Neverland Pirates and Sofia the First. Whether you favor tiaras or treasure chests, there's something for you at our Disney Junior Pirate & Princess Dance Party. Sofia and Jake will be there, come join them for the fun!



## FINAL JACKPOT BINGO

*Bingo Pre-Sales start at 3:45 pm*  
*Buena Vista Theatre, Deck 4 & 5, Midship - 4:15 pm*  
 The snowball jackpot MUST BE WON at this final session! Beat the line and get your cards early. Who will be the lucky winner? It could be you! Pre-Sales start 30 minutes prior to game.



## CLUB NEW YEAR'S EVE

*D Lounge, Deck 4, Midship - 10:15 pm*  
 Club New Year's Eve, you won't want to miss this journey of musical genres in history and performances by some of your favorite Cruise Staff. Bring your family and help us count down to a brand new year!



# YOUTH ACTIVITIES HIGHLIGHTS

## DINE & PLAY

A convenience for families dining at 8:15 pm, our Youth Activities counselors will be available at 9:15 pm at the entrance of Royal Court, Enchanted Garden and Animator's Palate dining rooms to bring registered children to join the fun in the Youth Activity areas.



Deck 5, Midship (7-1440)  
(3-12 years old)

9:00 am - 12:00 am

## MICKEY'S PUZZLE PLAYTIME

11:15 am

Come and play with Mickey & friends as they share their favorite games, puzzles and dances!

## TINKER BELL'S TALENT SHOW

7:30 pm

Tinker Bell has come from Pixie Hollow to Disney Cruise Line to help young cruisers discover their fairy talents.



Deck 5, Midship (7-1445)  
(3-12 years old)

9:00 am - 12:00 am

## GET THE HOOK

3:00 pm

A villainous villain has stolen Captain Hook's prized golden hook. Become a member of the Top Deck Detective Agency and help solve the clues to retrieve Hook's hook.

## MONSTER'S INC: OPEN "MIKE" NIGHT

10:00 pm

The Monsters of Monstropolis have all lost their voices and it's up to YOU to save the day. Participate in Mike Wazowski's Comedy School and a special show to help collect enough laughs to power up the city.



Deck 13, Midship (7-9743)  
(11-14 years old)

9:00 am - 1:00 am

## BRAINS AND BRAWNS

4:30 pm

You will compete against each other to solve clues, take part in physical challenges, and reach the finish first.

## THAT'S HILARIOUS

7:30 pm

Ever wanted to show off your comedy skills? Then be a part of the cast for the crazy improv show "That's Hilarious" and put on a live show for your friends.



Entrance on Deck 4, Forward (7-9418)  
(14-17 years old)

10:00 am - 2:00 am

## DREAM NOW! SEA HOW! - THEATRICAL

3:30 pm

Imagine a job where You are the person who brings to life the characters and their stories that have been imagined, dreamed and created. This is where you will meet one of the current Disney performers and will go behind the scenes and experience the magic that is created.

## MIX AND MATCH

10:45 pm

Try to find your "perfect match" in Disney's very own "Dating" game.

# BUENA VISTA THEATRE

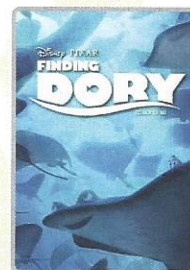
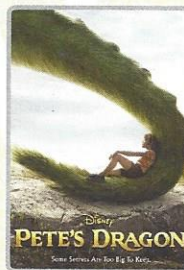
Deck 4 & 5, Midship  
Today's Movies



**DOLBY 3D**

8:30 am  
Duration: 1 hr 45 mins  
Rating: PG

10:30 am  
Duration: 1 hr 48 mins  
Rating: PG



**DOLBY 3D**

1:45 pm & 10:30 pm  
Duration: 1 hr 42 mins  
Rating: PG

5:45 pm & 8:15 pm  
Duration: 1 hr 45 mins  
Rating: PG



## FAMILY VARIETY ACT

Featuring the  
Physical Comedy  
of Michael Holly,  
as he entertains the  
entire family in this  
fun-filled show.

*The Tube,*  
Deck 4, Aft,  
12:00 pm & 3:30 pm



## ADULT VARIETY ACT

Featuring the  
Magic & Illusion  
of Shawn Farquhar  
as he entertains you in this  
adult exclusive show.

*The Tube (18+),*  
Deck 4, Aft,  
9:45 pm & 10:45 pm

## YOUTH ACTIVITIES OPEN HOUSE

Open House is an opportunity for all to come and participate in a variety of exciting activities and free time in the Oceaneer Club, Oceaneer Lab, it's a small world nursery, Vibe and Edge throughout the cruise. During these times secured programming will still be offered in the other venue for those looking to check their children into care.

Disney's Oceaneer Club: 9:00 am - 11:00 am

Disney's Oceaneer Lab: 4:00 pm - 5:30 pm

Edge: 9:00 am - 10:00 am & 6:00 pm - 7:30 pm

Vibe: 10:00 am - 11:00 am & 7:30 pm - 9:00 pm



# MORE TO ENJOY WHILE ONBOARD



The puppies from 101 Dalmatians have gone missing! Use your special detective "badge" to track down the puppies and catch the villain who took them.

**Deck 2 & 5, Midship,**  
9:00 am - 10:00 pm



## NEW FALL 2017 ITINERARIES

Set sail in fall 2017 and discover exciting new destinations on sailings departing from New York, Texas, California, and Port Canaveral! Visit the Disney Vacation Planning Desk, Deck 4, Midship for more information. Disney Vacation Planning tends to get busy on the last day of sailing. Don't miss the opportunity to plan your next Disney vacation.

## DISNEY VACATION CLUB® GROUP PREVIEW

Want to learn more about taking magical vacations year after year? Please see a Disney Vacation Club representative on Deck 4, Midship, or call 7-2805 from your stateroom phone for more information about our interactive group presentation.

## FREE ON DEMAND TV

Watch Disney movies, Hollywood features, ABC shows, and even captioned content, plus much more "On Demand" for FREE in the comfort of your stateroom! Bookmark your movie and come back to watch it later. Press MENU on your stateroom television remote control and follow the prompts.

## ARR-CADE

Where can you be a ninja, play the guitar like a rock star, race a car down the streets of Tokyo and along the way WIN some great prizes? Arr-CADE located Deck 11, Aft where the pirates play.

## Connect@Sea

We are now offering a NEW and improved Internet service to stay connected on your cruise like no other in the industry! Internet packages range from \$0.25 per MB - \$89.00 (1000 MB package). For more information contact your Connect@Sea Expert or Guest Services onboard.

Disney Cruise Line



Disney's private island Castaway Cay not only offers a terrific family beach day, but many other excursions and rentals to compliment. Snorkeling, bike and float rentals, parasailing plus much more, means that there is something for everyone at Disney Castaway Cay.

Visit the **Port Adventures Desk, Deck 5, Midship,** for more information.

## SHOPPING

### COMMODORE'S SIGNING

Don't miss your chance to meet the Master of the Disney Fantasy Cruise Ship! Stop by White Caps today at 12:15 pm where you can have your cruise mementos signed by our Commodore. Deck 3, Forward.

### BIBBIDI BOBBIDI BOUTIQUE

A makeover fit for a princess! Fairy Godmothers-in-Training are ready with magic and pixie dust to give your Prince and Princess the transformation of a lifetime. Make your reservations by visiting Bibbidi Bobbidi Boutique, Deck 5, Midship or dialing extension 7-9438. Limited space available.

### THE DISNEY PARKS COLLECTION BY PANDORA JEWELRY

The Disney Parks Collection by PANDORA Jewelry features hand-finished .925 sterling silver and 14K gold charms inspired by some of Disney's most beloved characters. Visit White Caps on Deck 3, Forward, where you'll find a specially designed sterling silver charm featuring a Disney Cruise Line ship.

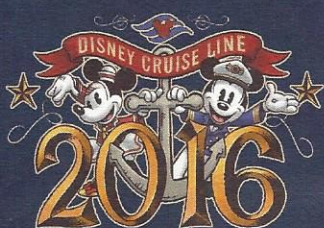
### BEAUTIFUL JEWELRY BY ONOFRIO D. ORO ON FIFTH

Inspired by interesting creatures from octopuses to spiders, discover the beautiful and unique jewelry pieces designed by Onofrio D. Oro on Fifth, available in White Caps, Deck 3, Forward.

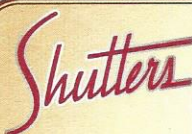
### ARMANI WATCHES

Find classic designs and ready to wear watches perfect for any time of day from Armani. Visit White Caps, Deck 3, Forward.

Commemorate your Disney cruise with a wide selection of 2016 Disney Cruise Line merchandise. From casual apparel to drinkware and more, you are sure to find a special souvenir for the whole family!



**MICKEY'S MAINSAIL**  
**DECK 3, FORWARD**



## PROFESSIONAL PORTRAITS TONIGHT

Tonight is your last chance for professional portraits! Capture the magic of your vacation at one of our portrait studios and let the memories live. Visit our professional portrait studios located in the Lobby Atrium, Deck 3, Midship.

5:15 pm - 6:00 pm  
7:15 pm - 8:30 pm  
9:30 pm - 10:15 pm

*\*Please note that photos are available for viewing on our interactive photo kiosks approximately five hours after being taken and are only available for purchase during this cruise. Photo sizes are preset and cannot be changed.*

D10233 09-08-2016 ©DISNEY

## IMPORTANT INFORMATION

### Security Notice

All Guests (including children) who wish to disembark the ship are required to present their key to the World card at the gangway. A photo ID is also required for those Guests who are 18 years of age or older. Guests under the age of 18 are required to have a parent, guardian or other responsible adult sign an authorization form at the Guest Service Desk if they wish to go ashore unaccompanied or with any adult from another stateroom.

### Inclement Weather

For the safety of all Guests, outdoor events may be changed due to unforeseen weather conditions.

### Insect Repellent Advisory

The Centers for Disease Control and Prevention recommends wearing long-sleeved shirts and pants along with insect repellent to protect against mosquito bites and related illnesses when going ashore. Complimentary insect repellent is available on the pier as you exit the ship. Insect repellent is also available for purchase in White Caps. When using both sunscreen and insect repellent, use sunscreen first and apply insect repellent on top of sunscreen.

### Corridor Quiet Hours

As a courtesy to all our Guests, please recognize quiet hallway hours from 10:00 pm till 8:00 am.

### Environmental Message

With Disney's commitment to the Environment, please refrain from throwing anything over the Ship's side. Thank you!

### No Reserved Seats Policy

As a courtesy to all our Guests, we kindly advise that the saving of seats is not permitted in the Walt Disney Theatre, and the saving of the sun loungers is not permitted on Deck 11, 12, and 13. Items left unattended will be returned to lost and found at Guest Services, Deck 3 Midship.

### Cold and Flu Reminder

Please wash hands frequently and thoroughly, particularly before meals. Contact the Health Center by dialing 7-1923, should anyone in your party become ill.

### Smoking

For the comfort of our Guests, the following areas are designated as smoking areas:  
• Deck 13, forward, port side by Currents  
• Deck 12, aft, port side outdoor area that is accessible through the Meridian Lounge  
• Deck 4, aft, port side from 6:00 pm to 6:00 am only (all of Deck 4 is non-smoking from 6:00 am to 6:00 pm)  
Smoking is prohibited inside all Guest staterooms and on stateroom verandahs. Guests found smoking in their staterooms or on their verandahs will be charged a \$250 stateroom recovery fee. Electronic cigarettes may only be used in designated smoking areas.

### Walt Disney Theatre

Theatrical performances may use artificial fog, strobe lights, pyrotechnics and other special effects. For the safety of our performers and the comfort of those around you, the use of any photography, video recording device or any electronic equipment is prohibited.

### Verandah Safety

Please do not leave any combustible materials on your balcony when not present in your stateroom for safety reasons.



 Symbol for activities that will be repeated during the cruise

Fold along the dotted lines and take me with you  
so you don't miss any of the fun!

— FOLD —

**YOUTH ACTIVITIES OPEN HOUSE**  
A non-secured program with activities for families, adults and children of all ages to enjoy together.