

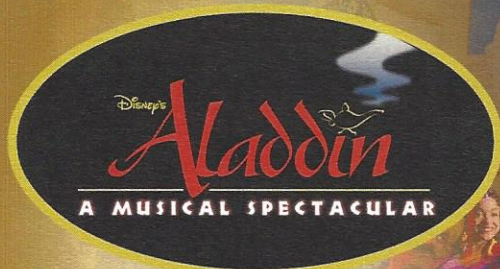
PERSONAL NAVIGATOR

SUNDAY, SEPTEMBER 4, 2016

Sunrise: 7:00 am Sunset: 7:46 pm
Evening Attire: Formal

Today: Sunny High: 84°F/29°C
Tomorrow: Sunny High: 88°F/31°C

DAY AT SEA



A fast-paced, musical comedy based on the beloved animated film.

Aladdin, the "street rat" of Agrabah, meets a wise-cracking Genie, battles the evil Jafar and falls in love with the beautiful and spirited Princess Jasmine. Disney storytelling at its best.



Assistance available at the entrance to the Walt Disney Theatre 30 minutes prior to show time.

WALT DISNEY THEATRE

Deck 3 & 4, Forward
6:15 pm & 8:30 pm

As a courtesy to all Guests, we kindly advise that the saving of seats is **not** permitted in the Walt Disney Theatre.

Disney FANTASY Fun Facts

Tonnage: 130,000 Gross Tons
Height: 216 Feet
Length: 1115 Feet

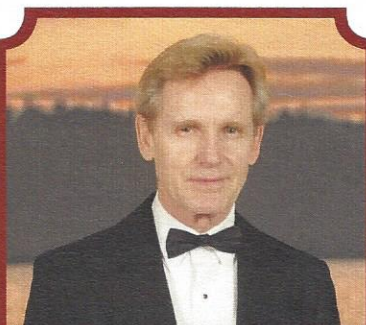
Important Dates

Name Announcement: *March 10, 2009*
Steel Cutting: *March 16, 2010*
Keel Laying: *February 11, 2011*
Delivery: *February 9, 2012*

Almost four football fields in length, the Disney Fantasy is longer than the height of the Eiffel Tower in Paris (1,063 feet). She is also longer than the height of New York City's famous Chrysler building (1,047 feet).

The Disney Fantasy's Whistle

The Disney Fantasy's whistle, a prominent element of the "Sailing Away" deck party at the start of the cruise, is quite the musical talent. It's able to perform not just the first musical line of "When You Wish Upon a Star" but also the second line of the song ("makes no difference who you are") plus several measures of "Yo Ho (A Pirate's Life for Me)," "It's a Small World," "Be Our Guest," "Hi Diddle Dee Dee (An Actor's Life for Me)," "A Dream is a Wish," and "Do you want to build a Snowman."



CAPTAIN'S RECEPTION

Enjoy live music and a cocktail while meeting some of the ship's officers.

*Lobby Atrium, Deck 3, Midship,
5:15 pm & 7:30 pm*

Enjoy an exclusive photo opportunity with Commodore Tom at
5:30 pm & 7:30 pm, Lobby Atrium

Don't Miss:

Good Morning Disney Fantasy

Channel 5 - Repeated from 5:00 am - 12:00 pm
Tune in to channel 5 as your Cruise Director highlights the upcoming events and activities for the day.

Anyone Can Cook: Sea Bass (18+)

D Lounge, Deck 4, Midship - 2:15 pm
From our galley to yours. Join our chefs as they show you how to prepare delicious dishes. Today's Menu - Sea Bass.

Variety Show: John Cassidy (18+)

The Tube, Deck 4, Aft - 9:45 pm & 10:45 pm
Featuring the Magic, Balloons & Comedy of John Cassidy, as he entertains you in this adult exclusive show.

Formal Night After Party

D Lounge, Deck 4, Midship - 9:45 pm
Join your Cruise Staff as we continue the party, with special appearances from the world famous Disney Characters.



TIME ZONE CHANGE

Remember to turn your clocks **BACK 1 HOUR** upon retiring on **SUNDAY** evening, or first thing **MONDAY** morning.

DINNER MENU

Animator's Palate : Pacific Rim Cuisine
Enchanted Garden : Continental Market Cuisine
Royal Court : French Cuisine

DRINK OF THE DAY

Bahama Mama (Alcoholic)
Coco Bali (Non Alcoholic)

IMPORTANT NUMBERS

Fire/Security: 7-3001
Medical Emergency: 7-3000
Health Center: 7-1923

ADULT ACTIVITY HIGHLIGHTS

SENSES SPA FITNESS CLASSES & SEMINARS

Pure Form Pilates - Donald's Pool - 7:00 am
Fab Abs - Senses Spa & Salon - 7:45 am
Body Sculpt Boot Camp (Nom. Fee) - Senses Fitness Center - 8:30 am
Detox for Health & Weight Loss - Senses Spa & Salon - 10:30 am
How to Look Ten Years Younger Today - Senses Spa & Salon - 11:30 am
Good Feet Seminar: Walking In Comfort - Senses Spa & Salon - 2:00 pm
Secrets to a Flatter Stomach - Senses Spa & Salon - 2:30 pm
Non-Surgical Facelift Seminar - Senses Spa & Salon - 3:15 pm
Tour De Cycle (Sign-Up Required) - Senses Fitness Center - 4:00 pm
Complimentary Footprint Analysis - Senses Spa & Salon - 5:00 pm
Total Body Conditioning - Senses Spa & Salon - 6:00 pm

TASTING CLASSES

Chocolate & Liquor Tasting (21+) - Ooh La La - 12:15 pm
Martini Tasting (21+) - Meridian - 1:00 pm
Champagne Tasting (21+) - Ooh La La - 1:45 pm
Mixology (21+) - Meridian - 3:00 pm; Skyline - 4:00 pm
Tequila & Margarita Tasting (21+) - Ooh La La - 4:30 pm
Whiskey Tasting (21+) - Cove Cafe - 10:00 pm
Cognac Tasting (21+) - Meridian - 10:30 pm
 Please make reservations for tastings at Guest Services for a nominal fee.
 Tasting Seminars are only for Guests 21 and older.

1820 SOCIETY: LUNCH

Cabanas, Deck 11, Aft - 12:00 pm
 Get to know your fellow Society members over lunch.

1820 SOCIETY: MINI GOLF

Goofy Golf, Deck 13, Aft - 3:45 pm
 Can you get a hole in one? Give it a try with some mini golf.

1820 SOCIETY: ICE CREAM SOCIAL

Frozone Treats, Deck 11, Midship - 9:45 pm
 Join your fellow Society members for some ice cream and conversation.

ESPN DREAM TEAM DRAFT DAY - FOOTBALL

O'Gills Pub, Deck 4, Aft - 10:45 am
 Join the "Commissioner" and engage in this interactive fantasy football draft unlike anything you've ever seen!
 Can YOU draft the greatest football team of all-time?

PIANO MEN TRIBUTE WITH AARON LOTZOW

La Piazza, Deck 4, Aft - 7:30 pm
 Join Aaron Lotzow as he plays piano live for your listening pleasure.

50'S AND 60'S MUSIC TRIVIA

O'Gills Pub, Deck 4, Aft - 7:30 pm
 Tune in for some trivia featuring popular music from the 50's and 60's.



FUN FOR ALL AGES HIGHLIGHTS

WAKE UP WITH DISNEY JUNIOR

D Lounge, Deck 4, Midship - 8:30 am
 What happens when you experience unlimited fun with your favorite Disney Junior shows? You get an exciting dance party designed especially for preschoolers ages seven and under.



DISNEY ANIMATION: CREATING A CHARACTER

D Lounge, Deck 4, Midship - 9:45 am
 Go behind the scenes at Walt Disney Animation Studios as Walt Disney himself talks about his most famous characters, then learn the basic techniques of drawing your favorite pals in this fun and interesting enrichment program.



TODDLER TIME

Outlook, Deck 14, Midship - 10:30 am & 1:00 pm
 Join us for some fun activities that your toddler is sure to enjoy.

DIAMOND JACKPOT BINGO

Bingo Pre-Sales start at 11:00 am
D Lounge, Deck 4, Midship - 11:15 am
 Join us for 4 cash prize games and your chance to win a diamond pendant! Everyone attending will also receive a FREE Island Charm courtesy of Diamonds International! Pre-Sales start 15 minutes prior to the game.



PORT SHOPPING TALK

Buena Vista Theatre, Deck 4 & 5, Midship - 11:15 am
 Join your Port Shopping Guide to learn about the incredible tax & duty free shopping ashore this cruise! Free charm bracelet for all in attendance and a raffle to win a diamond pendant!



MAGIC WORKSHOP WITH JOHN CASSIDY

The Tube, Deck 4, Aft - 12:00 pm & 7:30 pm
 John Cassidy teaches the basics of magic in this fun family event.

DISNEY VACATION CLUB GROUP PREVIEW

D Lounge, Deck 4, Midship - 12:30 pm
 Want to learn more about taking magical vacations year after year? Please see a Disney Vacation Club representative on Deck 4, Midship, or call 7-2805 from your stateroom phone for more information about our interactive group presentation.



MICKEY 200

The Tube, Deck 4, Aft - 1:00 pm
 Don't eat your vegetables... race them in this wild and wacky charge to the finish line. May the best veggie win! (Limited Availability)



DISNEY TRIVIA

O'Gills Pub, Deck 4, Aft - 2:30 pm
 Navigate your way through a round of questions to test how much you really know about Disney.

PIRATE LINE DANCING

Lobby Atrium, Deck 3, Midship - 3:00 pm
 Come join your Cruise Staff as they teach you some of the dances for the Pirate Party this cruise.

\$5,000 MEGA JACKPOT SENSES SPA BINGO

Bingo Pre-Sales start at 4:00 pm
D Lounge, Deck 4, Midship - 4:15 pm
 Don't miss your chance to take home big money! 4 CASH prize games and great raffle prizes to be won! Complete the fourth game in 46 numbers or less and win the \$5,000 Mega Jackpot! Plus get Spa Prizes that will pamper you, including a mini facial and massages all courtesy of the Senses Spa and Salon. Pre-Sales start 15 minutes prior to game.



YOUTH ACTIVITIES HIGHLIGHTS

DINE & PLAY

A convenience for families dining at 8:15 pm, our Youth Activities counselors will be available at 9:15 pm at the entrance of Royal Court, Enchanted Garden and Animator's Palate dining rooms to bring registered children to join the fun in the Youth Activity areas.



Deck 5, Midship (7-1440)
(3-12 years old)

9:00 am - 12:00 am

CRUISIN' WITH CRUSH

2:00 pm

Swim on by Disney's Oceaneer Club and join Crush in an undersea adventure you'll never forget.

HEFFALUMP EXPODISHUN

4:30 pm

The Heffalump is missing! Help us find him before the Wozzles do!



Deck 5, Midship (7-1445)
(3-12 years old)

9:00 am - 12:00 am

GET THE HOOK

3:15 pm

A villainous villain has stolen Captain Hook's prized golden hook. Become a member of the Top Deck Detective Agency and help solve the clues to retrieve Hook's hook.

PISTON CUP CHALLENGE

10:00 pm

It's Dinoco time and you're part of the pit crew! Design your own race car and see if you've got what it takes to end up in the winner's circle!



Deck 13, Midship (7-9743)
(11-14 years old)

9:00 am - 1:00 am

DISNEY ANIMATION: CREATING A CHARACTER

11:00 am

Go behind the scenes at Walt Disney Animation Studios as Walt Disney himself talks about his most famous characters, then learn the basic techniques of drawing Mickey and Donald in this fun and interesting enrichment program.

BRAINS AND BRAUNS

2:30 pm

You will compete against each other to solve clues, take part in physical challenges, and reach the finish first.



Entrance on Deck 4, Forward (7-9418)
(14-17 years old)

9:00 am - 2:00 am

ZOMBIFIED

12:00 pm

A big movie producer is looking for zombies to help him film the finale to his latest masterpiece, *Zombified*.

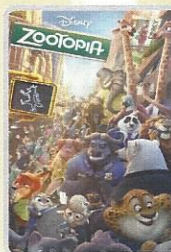
SPORTS DECK FUN

1:00 am

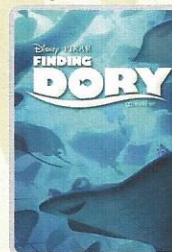
Take over the Sports Deck with some fun and friendly competition.

BUENA VISTA THEATRE

Deck 4 & 5, Midship
Today's Movies



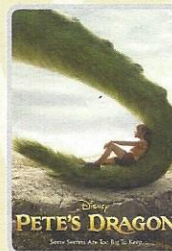
FAMILY MOVIE
FUN TIME
8:30 am
Duration:
1 hr 48 mins
Rating: PG



DOLBY 3D
12:30 pm
Duration:
1 hr 45 mins
Rating: PG



3:00 pm
Duration:
1 hr 55 mins
Rating: PG



5:45 pm & 8:15 pm
Duration:
1 hr 42 mins
Rating: PG



DOLBY 3D
10:30 pm
Duration:
2 hrs 27 mins
Rating: PG-13

SO YOU THINK YOU KNOW YOUR FAMILY?

FAMILY GAME SHOW

This fun-filled family game show is always full of surprises. Find out how well you know, or don't know your family!

*D Lounge,
Deck 4, Midship,
7:30 pm*



ADULT VARIETY ACT

Featuring the Comedy, Magic & Balloons of John Cassidy, as he entertains you in this adult exclusive show.

*The Tube (18+),
Deck 4, Aft,
9:45 pm & 10:45 pm*

YOUTH ACTIVITIES OPEN HOUSE

Open House is an opportunity for all to come and participate in a variety of exciting activities and free time in the Oceaneer Club, Oceaneer Lab, it's a small world nursery, Vibe and Edge throughout the cruise. During these times secured programming will still be offered in the other venue for those looking to check their children into care.

Disney's Oceaneer Lab: 7:00 pm - 8:30 pm

Edge: 9:00 am - 10:00 am & 6:00 pm - 7:30 pm

Vibe: 9:00 am - 10:00 am & 7:30 pm - 9:00 pm

MORE TO ENJOY WHILE ONBOARD

EASTERN CARIBBEAN

Disney Cruise Line offers a variety of sailings to exotic ports in the Caribbean, including port of Tortola, in the British Virgin Islands. Most voyages even include a stop at Disney Castaway Cay. Visit the Disney Vacation Planning desk, Deck 4, Midship, for more information. Disney Vacation Planning tends to get busy on the last day of sailing. Don't miss the opportunity to plan your next Disney vacation.

DISNEY VACATION CLUB® GROUP PREVIEW

Want to learn more about taking magical vacations year after year? Please see a Disney Vacation Club representative on Deck 4, Midship, or call 7-2805 from your stateroom phone for more information about our interactive group presentation.

PORT SHOPPING INFORMATION

Join your Port Shopping Guides, Candice and Mark, to learn about the incredible tax & duty free shopping ashore this cruise. Everything from diamonds to t-shirts, Rolex to rum-cake! Port Shopping Talk, Buena Vista Theatre, Deck 4, Midship, 11:15 am. FREE Charm Bracelet for everyone who attends! Raffle to win OVER \$1000 in prizes & giveaways! Later, join Candice and Mark as they give insider tips on shopping for gemstones in the Caribbean at the Diamond & Gemstone Seminar, The Tube, Deck 4, Aft, 3:00 pm.

Connect@Sea

We are now offering a NEW and improved Internet service to stay connected on your cruise like no other in the industry! Internet packages range from \$0.25 per MB - \$89.00 (1000 MB package). For more information contact your Connect@Sea Expert or Guest Services onboard.

ONBOARD AIRLINE CHECK IN

Stop by the Guest Services Desk, Deck 3, Midship to find out about enrolling in our Onboard Airline Check In Service.

CASTAWAY CAY 5K REGISTRATION (10+)

Sign up today for the Castaway Cay 5K! Please visit the Port Adventures Desk or the Guest Services Desk to register at anytime prior to our arrival at Disney Castaway Cay. Please note that runners must be 10 years of age or older to participate.

MIDSHIP DETECTIVE AGENCY

The puppies from 101 Dalmatians have gone missing! Use your special detective "badge" to track down the puppies and catch the villain who took them. Decks 2 & 5, Midship.

Disney Cruise Line. PORT ADVENTURES

The best way to explore our ports of call is through the eyes of a Port Adventure. Be adventurous and climb up Dunn's River Falls or explore the Green Grotto Caves in Falmouth. Why not swim with stingrays in Grand Cayman or explore the ruins in Cozumel. Visit the **Port Adventures Desk, Deck 5, Midship**, for more information.

SHOPPING

BIBBIDI BOBBIDI BOUTIQUE

Young Princesses and Princes can get ready for a formal evening with a makeover at the Bibbidi Bobbidi Boutique. Make your reservations by visiting Bibbidi Bobbidi Boutique, Deck 5, Midship or dialing extension 7-9438. Limited space available.

STYLISH TAG HEUER WATCHES

TAG Heuer is one of the largest and fastest growing Swiss brands and is in a constant quest for innovation and high precision. Stop by White Caps today where you'll discover the luxury and style of a TAG Heuer watch. White Caps, Deck 3, Forward.

ONOFRIO D. ORO ON FIFTH FINE JEWELRY

Head to White Caps, Deck 3, Forward, where you'll discover the captivating gold, silver, and gem-adorned fine jewelry pieces designed by Onofrio D. Oro on Fifth.

THOMAS KINKADE: HIDDEN CHARACTER CHALLENGE!

Known as the "Painter of Light," Thomas Kinkade is one of Disney's most celebrated artists having created an array of enchanting artwork. Stop by the Vista Gallery today to view his unique collection of paintings featuring some of your favorite Disney characters! Also, take the time to try and find all of the hidden Disney characters scattered throughout his paintings. Are you up to the challenge? Deck 4, Midship.

COLLECT YOUR DISNEY CRUISE LINE MEMORIES

Store the many happy memories you've photographed while on your Disney cruise inside a 2016 Disney Cruise Line photo album and scrapbook, available in Mickey's Mainsail, Deck 3, Forward.

BIBBIDI BOBBIDI BOUTIQUE

Does your Princess have more than one transformation reserved during this voyage? The Royal Sea Package contains multiple transformations in addition to unique offerings such as a Royal Rolling Trunk and a Keepsake Glass Slipper. Inquire about upgrading your experience to the Royal Sea Package by visiting the Bibbidi Bobbidi Boutique or by dialing extension 7-9438.



SENSES
SPA & SALON

SPA SPECIAL: IONITHERMIE

Would you like to lose between 1 - 8 inches?
Speed up your metabolism?
Firm your muscle tone?
Improve appearance of cellulite?
If so, then Ionithermie is the best treatment for you!
50 minutes for \$155

Senses Spa & Salon, Deck 11, Forward, Extension 7-1465

Onofrio D. Oro on Fifth

- Fine Jewelry -

Discover the beautiful
nature-inspired fine jewelry
collection by Onofrio D. Oro



White Caps
Deck 3, Forward

Shutters

FORMAL PORTRAITS TONIGHT!

Now that the family is dressed up and ready to enjoy the evening, capture the memories in your formal attire by visiting our professional portrait studios located in the Lobby Atrium, Deck 3, Midship.

5:15 pm - 6:00 pm
7:15 pm - 8:30 pm
9:30 pm - 10:15 pm

*Please note that photos are available for viewing on our interactive photo kiosks approximately five hours after being taken and are only available for purchase during this cruise.
Photo sizes are preset and cannot be changed.

IMPORTANT INFORMATION

Security Notice

All Guests (including children) who wish to disembark the ship are required to present their Key to the World card at the gangway. A photo ID is also required for those Guests who are 18 years of age or older. Guests under the age of 18 are required to have a parent, guardian or other responsible adult sign an authorization form at the Guest Services Desk if they wish to go ashore unaccompanied or with any adult from another stateroom.

Inclement Weather

For the safety of all Guests, outdoor events may be changed due to unforeseen weather conditions.

Insect Repellent Advisory

The Centers for Disease Control and Prevention recommends wearing long-sleeved shirts and pants along with insect repellent to protect against mosquito bites and related illnesses when going ashore. Complimentary insect repellent is available on the pier as you exit the ship. Insect repellent is also available for purchase in White Caps. When using both sunscreen and insect repellent, use sunscreen first and apply insect repellent on top of sunscreen.

Corridor Quiet Hours

As a courtesy to all our Guests, please recognize quiet hallway hours from 10:00 pm till 8:00 am.

Environmental Message

With Disney's commitment to the Environment, please refrain from throwing anything over the Ship's side. Thank you!

No Reserved Seats Policy

As a courtesy to all our Guests, we kindly advise that the saving of seats is not permitted in the Walt Disney Theatre, and the saving of the sun loungers is not permitted on Deck 11, 12, and 13. Items left unattended will be returned to lost and found at Guest Services, Deck 3 Midship.

Cold and Flu Reminder

Please wash hands frequently and thoroughly, particularly before meals. Contact the Health Center by dialing 7-1923, should anyone in your party become ill.

Smoking









For the comfort of our Guests, the following areas are designated as smoking areas:
*Deck 13, forward, port side by Currents
*Deck 12, aft, port side outdoor area that is accessible through the Meridian Lounge
*Deck 4, aft, port side from 6:00 pm to 6:00 am only (all of Deck 4 is non-smoking from 6:00 am to 6:00 pm)
Smoking is prohibited inside all Guest staterooms and on stateroom verandahs. Guests found smoking in their staterooms or on their verandahs will be charged a \$250 stateroom recovery fee. Electronic cigarettes may only be used in designated smoking areas.

Walt Disney Theatre

Theatrical performances may use artificial fog, strobe lights, pyrotechnics and other special effects. For the safety of our performers and the comfort of those around you, the use of any photography, video recording device or any electronic equipment is prohibited.

Verandah Safety

Please do not leave any combustible materials on your balcony when not present in your stateroom for safety reasons.

Morning	8:30	8:45	9:00	9:15	9:30	9:45	10:00	10:15	10:30	10:45	11:00	11:15	11:30	11:45	12:00	12:15	12:30	12:45	1:00	1:15	1:30							
FUNNEL VISION	A Goofy Movie (G) Funnel Vision					Frozen (PG) Funnel Vision										Movie Challenge Poolside Funnel Vision												
BUENA VISTA THEATRE	Family Movie Fun Time: Zootopia (PG) Duration: 1 Hour 48 Minutes										Port Shopping Talk					Finding Dory (PG) DOLBY 3D Duration: 1 Hour 45 Minutes												
CHARACTERS	Minnie Dk 4, Balcony	Woody Lobby Atrium (V)	Pluto Dk 4, Balcony		Goofy Dk 4, Balcony		Pluto Dk 4, Balcony											Stitch Dk 4, Balcony										
FUN FOR ALL AGES	 D Lounge				Jessie Lobby Atrium (V)	Woody Lobby Atrium (V)		Jessie Lobby Atrium (V)											Donald Dk 4, Balcony									
			 D Lounge				Disney Trivia La Piazza	Bingo Pre Sales	 D Lounge							Magic Workshop with John Cassidy The Tube	 Deck Stage	 TheyTube (Limited Availability)										
	Interdenominational Service Outlook (Guest Led)					Walking Ship Tour Preludes			Toddler Time Outlook								Disney Vacation Club Group Preview D Lounge			Toddler Time Outlook								
ADULTS	Friends of Bill W. Outlook		Art of The Theme Show Tour Meridian			Pub Quiz O'Gills Pub		Crafts: Tile Coasters O'Gills Pub		ESPN Dream Team Draft Day - Football O'Gills Pub		Port Shopping Talk Buena Vista Theatre			1820 Society: Lunch Cabanas		Cruisin' Solo Lunch Royal Court			Crafts: Origami Creations O'Gills Pub								
	Boot Camp (Nom. Fee) Senses Fitness Center														TV Tunes Trivia O'Gills Pub				Marti's Living (21+) Meridian		Selkie LIVE Cove Cafe							
VIBE 14-17 YEARS OLD						Youth Activities Open House			Open for Teens		Coffee Break	Disney Scene It			Zombified													
EDGE 11-14 YEARS OLD						Youth Activities Open House			GAGA Ball			Disney Animation: Creating a Character			Guesstures			Marshmallow Olympics										
OCEANEER LAB 3-12 YEARS OLD						Stitch's Adventure Squad			Super Sloppy Science			Wacky Relays			Lunch													
OCEANEER CLUB 3-12 YEARS OLD						Pre-School Fun (3-5 Years Old)			Magic Show											Mickey's Puzzle Playtime								
						Little Einstein's Adventure						Aloha Luau																
Afternoon	1:45	2:00	2:15	2:30	2:45	3:00	3:15	3:30	3:45	4:00	4:15	4:30	4:45	5:00	5:15	5:30	5:45	6:00	6:15	6:30	6:45							
FUNNEL VISION											Big Hero 6 (PG) Funnel Vision				Frozen Fever (G) Funnel Vision		Brother Bear (G) Funnel Vision											
BUENA VISTA THEATRE											The BFG (PG) Duration: 1 Hour 55 Minutes						Pete's Dragon (PG) Duration: 1 Hour 42 Minutes											
CHARACTERS						Stitch Dk 4, Balcony										Donald Preludes												
											Chip & Dale Dk 4, Balcony					Pluto Dk 4, Balcony												
																Goofy Preludes												
FUN FOR ALL AGES	Who Am I? D Lounge				Disney Trivia O'Gills Pub		Pirate Line Dancing Lobby Atrium		Bingo Pre Sales		\$5,000 Mega Jackpot Senses Spa  D Lounge		Captain's Welcome Reception Lobby Atrium				Live Music with The Royal Duo Lobby Atrium		 Walt Disney Theatre									
					Crafts: Origami Creations La Piazza		Disney Tunes Trivia La Piazza		Family Crafts La Piazza		The Quest The Tube		Live Music with Summer Breeze La Piazza				Family Crafts D Lounge											
ADULTS	Brainteasers Trivia O'Gills Pub		 D Lounge - Sea Bass		Diamond & Gemstone Seminar The Tube		1820 Society: Mini Golf Goofy Golf		Movie Quotes Trivia O'Gills Pub				Mixology (21+) Skyline															
VIBE 14-17 YEARS OLD	Zombified		Dive into DJ'ing			Scavenger Hunt			ESPN Dream Team Draft Day - Football			Football Tournament			Brain Teasers			Cards Tournament										
EDGE 11-14 YEARS OLD	Craft Corner		Brains and Brawns			Anyone Can Cook			Sports Deck Fun			Youth Activities Open House																
OCEANEER LAB 3-12 YEARS OLD	Anyone Can Cook					Get the Hook			Disney Animation: Creating a Character						Dinner													
OCEANEER CLUB 3-12 YEARS OLD	Cruisin' with Crush		Scavenger Hunt						4 Square Competition			Heffalump Expodishun																
						Tinker Bell's Talent Show																						
Evening	7:00	7:15	7:30	7:45	8:00	8:15	8:30	8:45	9:00	9:15	9:30	9:45	10:00	10:15	10:30	10:45	11:00	11:15	11:30	11:45	12:00							
FUNNEL VISION	Tomorrowland (PG) Open Captioning Funnel Vision										Avengers: Age of Ultron (PG-13) Open Captioning Funnel Vision																	
BUENA VISTA THEATRE											Pete's Dragon (PG) Duration: 1 Hour 42 Minutes										Captain America: Civil War (PG-13) DOLBY 3D Duration: 2 Hours 27 Minutes							
CHARACTERS	Chip & Dale Preludes		Donald Preludes				Daisy Preludes		Donald Preludes		Goofy Preludes																	
FUN FOR ALL AGES			Minnie Mouse Dk 4, Balcony		Daisy Preludes				Minnie Dk 4, Balcony		Mickey Dk 4, Balcony																	
	Hula Hoop Jam Oceaneer Lab		Captain's Welcome Reception Lobby Atrium						Formal Night After Party D Lounge																			
			Magic Workshop with John Cassidy The Tube																									
ADULTS			So You Think You Know Your Family? D Lounge				Family Crafts D Lounge				Live Music with Summer Breeze Lobby Atrium				Live Music with Summer Breeze Lobby Atrium													
			50's and 60's Music Trivia O'Gills Pub						Club DJ J Alan The Tube		Variety: John Cassidy The Tube				The Quest The Tube		Variety: John Cassidy The Tube		Going Underground with Club DJ J Alan The Tube									
			Piano Men Tribute with Aaron Lotzow La Piazza								Team Trivia O'Gills Pub																	
VIBE 14-17 YEARS OLD	Cards Tournament		Youth Activities Open House				Pump It Up								That's Hilarious			Gender Wars										
EDGE 11-14 YEARS OLD	Open House		Magic Show				Pictionary			Video Game Challenge					Gender Wars			Tween Choice										
OCEANEER LAB 3-12 YEARS OLD	Youth Activities Open House									Lights, Camera, Improv!					Piston Cup Challenge													
OCEANEER CLUB 3-12 YEARS OLD	Hula Hoop Jam		Anyone Can Cook																									
	Dress Up Fun		Once Upon a Time												Pluto's Pajama Party													
							Magic PlayFloor											Cartoon Time										

Symbol for activities that will be repeated during the cruise

FOLD

FOLD

YOUTH ACTIVITIES OPEN HOUSE

A non-secured program with activities for families, adults and children of all ages to enjoy together.