

# PERSONAL NAVIGATOR



WEDNESDAY, AUGUST 31, 2016

Sunrise: 6:05 am Sunset: 6:34 pm  
Evening Attire: Cruise Casual  
All Ashore: 7:45 am All Aboard: 4:00 pm

Today: Partly Sunny High: 84°F/29°C  
Tomorrow: Sunny High: 88°F/31°C

ST. THOMAS, U.S. VIRGIN ISLANDS

## SHOWTIME

FEATURING

THE COMEDY, MAGIC  
& BALLOONS OF  
John Cassidy

WALT DISNEY THEATRE

Deck 3 & 4, Forward  
6:15 pm & 8:30 pm

As a courtesy to all Guests, we kindly advise that the saving of seats is **not** permitted in the Walt Disney Theatre.



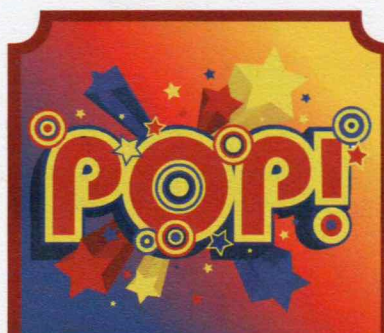
## St. Thomas Port Information

Once largely occupied by Dutch-owned sugar cane plantations and pirates of the Caribbean, St. Thomas and St. John of the U.S. Virgin Islands are some of the most popular tropical tourist destinations in the world. A destination that boasts so many sites for sport, relaxation and leisure has a culture that is still influenced in ways by its agricultural and native past.

Two-thirds of the island of St. John, a short ferry ride from St. Thomas, is a National Park. Not only is this part of the island the most beautiful it is also the most serene, surrounded by shimmering bays and beaches.

A place so celebrated today for its pristine tranquility and peaceful way of life was—for 150 years—a notorious pirate post before the islands were conquered by the Dutch West Indian Company.

The islands have seen a steady rise in tourism since, and today, there is an entire world of leisure and adventure to explore on St. Thomas and St. John.



### ADULT QUIZ

Have you been told you are full of useless information about pop culture? If the answer is "Yes", then you have what it takes to play the high energy game show all about the world of Pop!

The Tube (18+),  
Deck 4, Aft,  
10:00 pm

## Don't Miss:

### Good Morning Disney Fantasy

Channel 5 - Repeated from 5:00 am - 12:00 pm  
Tune in to channel 5 as your Cruise Director highlights the upcoming events and activities for the day.

### Disney Channel on Deck

Deck 11 Stage, Deck 11, Midship - 4:30 pm  
Don't change that channel! It's time for a Disney Channel afternoon poolside! Your Cruise Staff will host an exciting day of games and contests in between your favorite Disney Channel shows! So sit back, relax, and enjoy the sun!

### 80's Music Challenge (18+)

The Tube, Deck 4, Aft - 10:30 pm  
"Moon Walk" back to the 80's as we put your musical knowledge of the decade to the test.

### London Rocks (18+)

The Tube, Deck 4, Aft - 11:00 pm  
Hop onboard and hit the dance floor as we take you on a ride through the charts, partying it up to some of the hottest British hits! With a special performance by the Underground Dancers.

### DOCKING

The ship docks at Havensight Mall Dock, which is also known as West Indian Company Dock.

Disney Cruise Line

PORT ADVENTURES

Please check your tour tickets for meeting times and locations.  
Visit the Port Adventures desk, Deck 5, Midship for any questions.

## DINNER MENU

Animator's Palate : Prince & Princess  
Enchanted Garden : Prince & Princess  
Royal Court : Prince & Princess

## DRINK OF THE DAY

Mai Tai (Alcoholic)  
Cranberry No-Jito (Non-Alcoholic)

### IMPORTANT NUMBERS

Fire/Security: 7-3001  
Medical Emergency: 7-3000  
Health Center: 7-1923



# ADULT ACTIVITY HIGHLIGHTS



## SENSES SPA FITNESS CLASSES & SEMINARS

*Sunrise Stretch* - Senses Fitness Center - 7:00 am  
*Fab Abs* - Senses Fitness Center - 8:30 am  
*Complimentary Footprint Analysis* - Senses Fitness Center - 9:30 am & 6:00 pm  
*Complimentary Walk-In Facial Rejuvenation*  
*Consultations* - Senses Spa & Salon - 3:00 pm  
*Seminar: Burn Fat Faster* - Senses Spa & Salon - 4:00 pm  
*Pure Form Pilates* - Senses Fitness Center - 5:00 pm



### 1820 SOCIETY: GIANT JENGA

*O'Gills Pub, Deck 4, Aft - 4:15 pm*  
 Have some fun with this classic game.

### 1820 SOCIETY: DODGEBALL CHALLENGE

*Frozone Treats, Deck 11, Midship - 10:00 pm*  
 Society members, Guests who are 18 - 20 years old, unite as a team to throw, dodge and duck!



### ESPN DREAM TEAM DRAFT DAY - BASKETBALL

*O'Gills Pub, Deck 4, Aft - 2:45 pm*  
 Join the "Commissioner" and engage in this interactive fantasy basketball draft unlike anything you've ever seen! Can YOU draft the greatest basketball team of all-time?

### LIVE GUITAR WITH SELKIE

*O'Gills Pub, Deck 4, Aft - 5:15 pm*  
*Ooh La La, Deck 4, Aft - 7:30 pm, 9:45 pm & 10:45 pm*  
 Join Selkie as she plays live for your listening pleasure.



### 80'S MUSIC CHALLENGE

*The Tube, Deck 4, Aft - 10:30 pm*  
 "Moon Walk" back to the 80's as we put your musical knowledge of the decade to the test.

# FUN FOR ALL AGES HIGHLIGHTS



## ANYONE CAN COOK

*Disney's Oceaneer Lab, Deck 5, Midship - 1:45 pm*  
 Anyone can cook as we work together to create some of our favorite treats.

## DISNEY TRIVIA

*La Piazza, Deck 4, Aft - 2:45 pm*

Navigate your way through a round of questions to test how much you really know about Disney.



## CHIP-IT GOLF (12+)

*Lobby Atrium, Deck 3, Midship - 3:30 pm*  
 It's par for the course for our Guests 12 and older to compete on our special "greens" in this fun tournament.



## DOUBLE UP JACKPOT BINGO

*Bingo Pre-Sales start at 4:00 pm*  
*D Lounge, Deck 4, Midship - 4:15 pm*  
 Special double up session: All electronic cards purchased will be doubled! The snowball jackpot continues to grow and could be won today! Pre-Sales start 15 minutes prior to the game.



## DISNEY CHANNEL ON DECK

*Deck 11 Stage, Deck 11, Midship - 4:30 pm*  
 Don't change that channel! It's time for a Disney Channel afternoon poolside! Your Cruise Staff will host an exciting day of games and contests in between your favorite Disney Channel shows! So sit back, relax, and enjoy the sun!

## FAMILY CRAFTS

*D Lounge, Deck 4, Midship - 6:15 pm & 8:30 pm*  
 Create a fun souvenir with your Cruise Staff that is yours to keep.

## FAMILY DANCE PARTY

*The Tube, Deck 4, Aft - 7:00 pm*  
 Bring the whole family and dance your cares away to some of your favorite hits!



## MEGA RAFFLE JACKPOT BINGO

*Bingo Pre-Sales start at 7:15 pm*  
*D Lounge, Deck 4, Midship - 7:30 pm*  
 Four cash prizes and fun, Disney Cruise Line raffle prizes are up for grabs! Pre-Sales start 15 minutes prior to game.

## MAJORITY RULES

*The Tube, Deck 4, Aft - 7:30 pm*  
 Join your Club Host, to find out who really rules!



## FAMILY SUPERSTAR KARAOKE

*D Lounge, Deck 4, Midship - 9:30 pm*  
 Join your Cruise Staff and sing along to your favorite song - fun for everyone.

## DISNEY TRIVIA

*D Lounge, Deck 4, Midship - 11:00 pm*

Navigate your way through a round of questions to test how much you really know about Disney.

## SAFETY ASHORE INFORMATION

While you will find many great experiences ashore, please remain vigilant about your personal safety and the safety of your belongings. As in any large urban tourist destination, you'll want to take some basic precautions to make the most of your time ashore.

- Be aware of your surroundings at all times. Avoid short cuts, narrow alleys and poorly lit streets.
- Avoid wandering from the main shopping and tourist areas into unfamiliar territory. If venturing out independently, have a plan, use only licensed taxi operators.
- Identity/Credit Card theft can occur anywhere. Please remain vigilant in monitoring the safe keeping of your personal information.
- Leave valuables in your room safe and avoid carrying large amounts of cash. Exercise caution when using ATMs. Cameras and handbags should be carried close to your body or concealed out of sight.
- Leave air transportation tickets and other travel documents in your room safe. When going ashore, each adult is required to carry a Driver's license, passport or other government-issued photo ID. - Note: Some ports may require guests to carry passports ashore.
- Most crimes are easier to commit in dark unlit areas. When going ashore at night, please be extra vigilant about your personal safety.



# YOUTH ACTIVITY HIGHLIGHTS

## DINE & PLAY

A convenience for families dining at 8:15 pm, our Youth Activities counselors will be available at 9:15 pm at the entrance of Royal Court, Enchanted Garden and Animator's Palate dining rooms to bring registered children to join the fun in the Youth Activity areas.



*Deck 5, Midship (7-1440)*  
(3-12 years old)

10:00 am - 12:00 am

## JOURNEY TO NEVERLAND

3:00 pm

Join Peter Pan as he takes you on an adventure on the Magic Playfloor.

## BIG TOP FUN FEST!

7:30 pm

It's the greatest show on Earth. Come re-discover the circus Disney style with clowns, jugglers and classic Disney cartoons.



*Deck 5, Midship (7-1445)*  
(3-12 years old)

7:30 am - 12:00 am

## DETECTIVE SCHOOL

4:00 pm

It's a crime how much fun you'll have as you go CSI Goofy style.

## SUPER SLOPPY SCIENCE

7:30 pm

Join Professor Make-O-Mess in some of the most extreme experiments you will ever see in the world of Super Sloppy Science!



*Deck 13, Midship (7-9743)*  
(11-14 years old)

10:00 am - 1:00 am

## ICE CREAM SOCIAL

3:15 pm

I scream, you scream, we all scream for ice cream! Make your own frosty treat with your Counselors.

## GENDER WARS

10:00 pm

Join us as we find out who really are the kings or queens of the castle.



*Entrance on Deck 4, Forward (7-9418)*  
(14-17 years old)

12:00 pm - 2:00 am

## DISNEY ANIMATION: CREATING A CHARACTER

4:30 pm

Go behind the scenes at Walt Disney Animation Studios as Walt Disney himself talks about his most famous characters, then learn the basic techniques of drawing Mickey and Donald in this fun and interesting enrichment program.

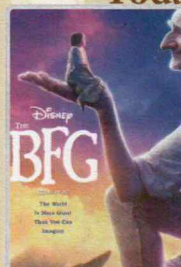
## MAGIC SHOW

11:00 pm

The Magnificent Magician will demonstrate to you some of the best known magic tricks on the sea.

# BUENA VISTA THEATRE

Deck 4 & 5, Midship  
Today's Movies



**DOLBY.3D**

11:30 am

Duration: 1 hr 55 mins

Rating: PG



2:00 pm

Duration: 2 hrs 27 mins

Rating: PG-13



**DOLBY.3D**

5:45 pm & 8:15 pm

Duration: 1 hr 42 mins

Rating: PG



10:30 pm

Duration: 1 hr 46 mins

Rating: PG



## FAMILY GAME SHOW

Bring the entire family and test your Disney knowledge in the high-tech interactive game show, Family Fusion.

*D Lounge,  
Deck 4, Midship,  
10:30 pm*



## ADULT THEME NIGHT

Hop onboard and hit the dance floor as we take you on a ride through the charts, partying it up to some of the hottest British hits!

*The Tube (18+),  
Deck 4, Aft,  
11:00 pm*

## YOUTH ACTIVITIES OPEN HOUSE

Open House is an opportunity for all to come and participate in a variety of exciting activities and free time in the Oceaneer Club, Oceaneer Lab, it's a small world nursery, Vibe and Edge throughout the cruise. During these times secured programming will still be offered in the other venue for those looking to check their children into care.

**Disney's Oceaneer Club:** 10:00 am - 1:00 pm

**Disney's Oceaneer Lab:** 1:00 pm - 2:30 pm

**Edge:** 10:00 am - 11:00 am & 7:30 pm - 9:00 pm

**Vibe:** 6:00 pm - 7:30 pm



# MORE TO ENJOY WHILE ONBOARD

## BAHAMIAN VOYAGES

The Bahamas are renowned for breathtaking beaches, incredible recreation and exceptional shopping experiences. Pair your tropical escape with the world-class comfort and service of a Disney cruise and make your getaway complete. Visit the Disney Vacation Planning desk, Deck 4, Midship for more information. Disney Vacation Planning tends to get busy on the last day of sailing. Don't miss the opportunity to plan your next Disney vacation.

## DISNEY VACATION CLUB® GROUP PREVIEW

Want to learn more about taking magical vacations year after year? Please see a Disney Vacation Club representative on Deck 4, Midship, or call 7-2805 from your stateroom phone for more information about our interactive group presentation.

## PORT SHOPPING INFORMATION

St. Thomas is not to be missed, offering some of the best shopping this cruise! Take a taxi to downtown St. Thomas and meet your Port Shopping Guides, Candice and Mark, in Diamonds International Store #1a between 10:00 am -12:00 pm. Remember to pick up your Port Shopping Map & coupons on the gangway! Watch Channel 9 for more St. Thomas information!



**SENSES**  
SPA & SALON

## PAMPER PACKAGE

- 50 minute Full Body Massage
  - Foot & Ankle Massage
  - Indian Scalp Massage
  - 25 Minute Booster Facial
- All for \$149

Senses Spa & Salon, Deck 11, Forward, Extension 7-1465

Choose your alliance and gear up with fun new Star Wars merchandise designed exclusively for Disney Cruise Line.

AVAILABLE ONBOARD!  
DECK 3, FORWARD



## PRIVATE STUDIO SESSION

Private Studio, centered around the art of simplicity, is distinctive black and white portraiture providing one-of-a-kind personal photography. Reserve your complimentary, private photo session today.

Visit Shutters Portrait Studio for more information.

*\*Please note that photos are available for viewing on our interactive photo kiosks approximately five hours after being taken and are only available for purchase during this cruise. Photo sizes are preset and cannot be changed.*

## Connect @ Sea

We are now offering a NEW and improved Internet service to stay connected on your cruise like no other in the industry! Internet packages range from \$0.25 per MB - \$89.00 (1000 MB package). For more information contact your Connect@Sea Expert or Guest Services onboard.

## ONBOARD AIRLINE CHECK IN

Stop by the Guest Services Desk, Deck 3, Midship to find out about enrolling in our Onboard Airline Check In Service.

## FREE ON DEMAND TV

Watch Disney movies, Hollywood features, ABC shows, and even captioned content, plus much more "On Demand" for FREE in the comfort of your stateroom! Bookmark your movie and come back to watch it later. Press MENU on your stateroom television remote control and follow the prompts.

Disney Cruise Line

## PORT ADVENTURES

Your Port Adventures Desk is open this morning for your last minute St. Thomas reservations. Let us take care of everything from Magen's Bay to island tours to St. John where you can sail and snorkel - your tour can even leave you time for shopping at the end! Don't forget to reserve space for the trip to St. John and its beautiful Trunk Bay beach. For the more adventurous, join us for one of the many Catamaran Sail and Snorkel excursions.

Visit the **Port Adventures Desk, Deck 5, Midship**, for more information.

## SHOPPING

### FINDING DORY MERCHANDISE

Find Dory and her friends on Finding Dory inspired merchandise at Mickey's Mainsail, Deck 3, Forward.

### SOPHIA FIORI DISNEY INSPIRED JEWELRY

Discover the elegant Disney inspired diamond jewelry collection by Sophia Fiori, one of the world's leading designers of diamond jewelry when you visit White Caps, Deck 3, Forward.

### INNOVATIVE DESIGNS BY CITIZEN WATCHES

It starts with a simple, yet revolutionary concept: a watch that never needs a battery. Citizen Eco-Drive technology harnesses the power of light from any natural or artificial light source and converts to energy. See the Collection of Men's and Ladies' watches available in White Caps, Deck 3, Forward.

### BIBBIDI BOBBIDI BOUTIQUE

A makeover fit for a princess! Fairy Godmothers-in-Training are ready with magic and pixie dust to give your Prince and Princess the transformation of a lifetime. Make your reservations by visiting Bibbidi Bobbidi Boutique, Deck 5, Midship or dialing extension 7-9438. Limited space available.

### SPHERO STAR WARS BB-8 DROID

This is the droid you are looking for! Roll on over to Mickey's Mainsail to pick up the Sphero Star Wars BB-8 app enabled droid today. Deck 3, Midship.

### ROMERO BRITTO ART AT THE VISTA GALLERY

Discover the fun and colorful art pieces in the Vista Gallery featuring some of your favorite Disney characters by celebrated artist Romero Britto. Visit the Vista Gallery today and ask a merchandise host/hostess for details on how you can purchase and take home any of these inspiring art pieces! Deck 4, Midship.

Due to port regulations, when the ship is docked, the stores will remain closed.

## IMPORTANT INFORMATION

### Security Notice

All Guests (including children) who wish to disembark the ship are required to present their Key to the World card at the gangway. A photo ID is also required for those Guests who are 18 years of age or older. Guests under the age of 18 are required to have a parent, guardian or other responsible adult sign an authorization form at the Guest Service Desk if they wish to go ashore unaccompanied or with any adult from another stateroom.

### Insect Repellent Advisory

Protect against mosquito bites and related illnesses when going ashore. Insect repellent is available for purchase in White Caps. When using both sunscreen and insect repellent, use sunscreen first and apply insect repellent on top of sunscreen.

### Cold and Flu Reminder

Please wash hands frequently and thoroughly, particularly before meals. Contact the Health Center by dialing 7-1923, should anyone in your party become ill.

### Corridor Quiet Hours

As a courtesy to all our Guests, please recognize quiet hallway hours from 10:00 pm till 8:00 am.

### Inclement Weather

For the safety of all Guests, outdoor events may be changed due to unforeseen weather conditions.

### Environmental Message

With Disney's commitment to the Environment, please refrain from throwing anything over the Ship's side. Thank you!

### No Reserved Seats Policy

As a courtesy to all our Guests, we kindly advise that the saving of seats is not permitted in the Walt Disney Theatre, and the saving of the sun loungers is not permitted on Deck 11, 12, and 13. Items left unattended will be returned to lost and found at Guest Services, Deck 3 Midship.

### Smoking

For the comfort of our Guests, the following areas are designated as smoking areas:  
\*Deck 13, forward, port side by Currents  
\*Deck 12, aft, port side outdoor area that is accessible through the Meridian Lounge  
\*Deck 4, aft, port side from 6:00 pm to 6:00 am only (all of Deck 4 is non-smoking from 6:00 am to 6:00 pm)  
Smoking is prohibited inside all Guest staterooms and on stateroom verandahs. Guests found smoking in their staterooms or on their verandahs will be charged a \$250 stateroom recovery fee. Electronic cigarettes may only be used in designated smoking areas.

### Walt Disney Theatre

Theatrical performances may use artificial fog, strobe lights, pyrotechnics and other special effects. For the safety of our performers and the comfort of those around you, the use of any photography, video recording device or any electronic equipment is prohibited.

### Verandah Safety

Please do not leave any combustible materials on your balcony when not present in your stateroom for safety reasons.



Morning	8:30	8:45	9:00	9:15	9:30	9:45	10:00	10:15	10:30	10:45	11:00	11:15	11:30	11:45	12:00	12:15	12:30	12:45	1:00	1:15	1:30		
FUNNEL VISION	Cinderella (Classic) (G) Funnel Vision					Monsters, Inc. (G) Funnel Vision					Finding Nemo (G) Funnel Vision												
BUENA VISTA THEATRE											The BFG (PG) <b>DOLBY 3D</b> Duration: 1 Hour 55 Minutes												
CHARACTERS																							
FUN FOR ALL AGES								Create a Postcard Ocean Explorer Club								Color Yourself Heroic Disney's Ocean Explorer Club						Magic PlayFloor Ocean Explorer Lab	
ADULTS	Friends of Bill W. Outlook						Footprint Analysis Senses Fitness Center																
	Fab Abs Senses Fitness Center																						
VIBE 14-17 YEARS OLD															Matinee Movie								
EDGE 11-14 YEARS OLD							Youth Activities Open House				Animation Cells				Video Game Challenge				Scattergories				
OCEANEER LAB 3-12 YEARS OLD	Game Challenge								Pictionary						Lunch				Youth Activities Open House				
					Scavenger Hunt						Magic PlayFloor						Magic PlayFloor						
OCEANEER CLUB 3-12 YEARS OLD							Youth Activities Open House												Create a Postcard				
									Create a Postcard						Color Yourself Heroic								

Afternoon	1:45	2:00	2:15	2:30	2:45	3:00	3:15	3:30	3:45	4:00	4:15	4:30	4:45	5:00	5:15	5:30	5:45	6:00	6:15	6:30	6:45			
FUNNEL VISION	Descendants - (TV-G) Funnel Vision												Disney Channel on Deck Funnel Vision				The Incredibles (PG) Funnel Vision							
BUENA VISTA THEATRE	Captain America: Civil War (PG-13) Duration: 2 Hours 27 Minutes												Pete's Dragon (PG) <b>DOLBY 3D</b> Duration: 1 Hour 42 Minutes											
CHARACTERS									Chip & Dale Dk 4, Balcony				Mickey Dk 4, Balcony	Donald Lobby Atrium	Belle Lobby Atrium (V)	Cinderella Lobby Atrium (V)	Ariel Lobby Atrium (V)							
							Pluto Dk 4, Balcony				Tiana Lobby Atrium (V)	Stitch Lobby Atrium (P)	Minnie Dk 4, Balcony	Goofy Lobby Atrium (P)	Daisy Dk 4, Balcony									
FUN FOR ALL AGES	Crafts: 3D Crafts La Piazza				Disney Trivia La Piazza				Bingo Pre Sales		Double Up Jackpot D Lounge				Live Music with The Royal Duo Lobby Atrium				The Magic & Balloons of <b>JOHN CASSIDY</b> Walt Disney Theatre					
											Disney Channel on Deck Deck 11 Stage				Live Piano with Aaron Lotzow La Piazza		Family Crafts D Lounge							
	Ocean Explorer Lab						Lobby Atrium (12+)																	
ADULTS					ESPN Dream Team Draft Day - Basketball O'Gills Pub						Pub Quiz O'Gills Pub		1820 Society: Giant Jenga O'Gills Pub		Pure Form Pilates Senses Fitness Center				Footprint Analysis Senses Fitness Center					
															Live Guitar with Selkie O'Gills Pub									
VIBE 14-17 YEARS OLD	Craft Corner			Ninja			Scavenger Hunt			Ice Cream Social			Disney Animation: Creating a Character			Brain Teasers			Youth Activities Open House					
EDGE 11-14 YEARS OLD	Four Square			Villains			Ice Cream Social			Scavenger Hunt						Brain Teasers			Tween Choice					
OCEANEER LAB 3-12 YEARS OLD	Youth Activities Open House			Float Fun Trivia						Detective School														
	Anyone Can Cook																							
OCEANEER CLUB 3-12 YEARS OLD						Journey to Neverland					Toy Story Boot Camp										Dinner			
	Aloha Luau															Picture This								
																							Magic PlayFloor	

Evening	7:00	7:15	7:30	7:45	8:00	8:15	8:30	8:45	9:00	9:15	9:30	9:45	10:00	10:15	10:30	10:45	11:00	11:15	11:30	11:45	12:00
FUNNEL VISION					Cars (G) Funnel Vision								McFarland, USA (PG)  Open Captioning Funnel Vision								
BUENA VISTA THEATRE					Pete's Dragon (PG)  DOLBY 3D Duration: 1 Hour 42 Minutes								The Jungle Book (2016) (PG) Duration: 1 Hour 46 Minutes								
CHARACTERS		Goofy Preludes		Minnie Preludes					Daisy Dk 4, Balcony	Tiana Lobby Atrium (V)	Mickey Dk 4, Balcony	Belle Lobby Atrium (V)	Minnie Dk 4, Balcony								
			Belle Lobby Atrium (V)							Cinderella Lobby Atrium)	Pluto Preludes		Goofy Preludes								
FUN FOR ALL AGES		Bingo Pre Sales	Mega Raffle Jackpot Bingo D Lounge				The Magic & Balloons of <b>JOHN CASSIDY</b> Walt Disney Theatre				D Lounge		D Lounge		Disney Trivia D Lounge						
		Family Dance Party The Tube	Majority Rules The Tube				Family Crafts D Lounge				Live Music with The Royal Duo Lobby Atrium		Live Piano with Aaron Lotzow Lobby Atrium								
ADULTS			Know It All Trivia O'Gills Pub								Club DJ J Alan The Tube		The Tube		The Tube		The Tube		80's/90's Remix with Club DJ J Alan The Tube		
			Live Piano with Aaron Lotzow La Piazza								Summer Breeze LIVE La Piazza						La Piazza		Summer Breeze LIVE La Piazza		
VIBE 14-17 YEARS OLD	Open House		Smoothie Hour			AquaDuck Fun		Pump It Up				Gender Wars				Magic Show		Gotcha Registration			
EDGE 11-14 YEARS OLD	Create a Postcard		Youth Activities Open House					Cards Tournament				Gender Wars				Bingo					
OCEANEER LAB 3-12 YEARS OLD			Super Sloppy Science									Anyone Can Cook									
							GAGA Ball														
OCEANEER CLUB 3-12 YEARS OLD			Big Top Fun Fest!					Color Yourself Heroic						Talent Show							
													Disney Animation: Creating a Character								

Symbol for activities that will be repeated during the cruise



FOLD

Fold along the dotted lines and take me with you so you don't miss any of the fun!

FOLD

YOUTH ACTIVITIES OPEN HOUSE  
A non-secured program with activities for families, adults and children of all ages to enjoy together.



# BUENA VISTA THEATRE

Deck 4 & 5, Midship



**DOLBY 3D**

**DOLBY 3D**

11:30 am  
Duration:  
1 hr 55 mins  
Rating: PG

2:00 pm  
Duration:  
2 hrs 27 mins  
Rating: PG-13

5:45 pm  
& 8:15 pm  
Duration:  
1 hr 42 mins  
Rating: PG

10:30 pm  
Duration:  
1 hr 46 mins  
Rating: PG

## Character Appearances

**CHIP & DALE**  
Deck 4, Balcony - 3:30 pm

**PLUTO**  
Deck 4, Balcony - 4:00 pm  
Preludes  
5:15 pm & 9:45 pm

**MICKEY MOUSE**  
Deck 4, Balcony  
4:30 pm & 9:45 pm

**PRINCESS TIANA**  
Lobby Atrium (V)  
4:30 pm & 9:30 pm

**STITCH**  
Lobby Atrium (P) - 4:45 pm

**DONALD DUCK**  
Preludes - 4:45 pm

**BELLE**  
Lobby Atrium (V)  
5:00 pm, 7:30 pm & 10:00 pm

**MINNIE MOUSE**  
Deck 4, Balcony  
5:00 pm & 10:15 pm  
Preludes - 7:45 pm

**CINDERELLA**  
Lobby Atrium  
5:15 pm & 9:30 pm

**GOOFY**  
Lobby Atrium (P) - 5:15 pm  
Preludes  
7:15 pm & 10:15 pm

**DAISY DUCK**  
Deck 4, Balcony  
5:30 pm & 9:15 pm

**ARIEL**  
Lobby Atrium (V)  
5:30 pm & 8:00 pm



(H) Hallway - (S) Starboard Side - (P) Port Side - (V) Vestibule

For details of daily Disney character appearances, refer to the character line on your Navigator Grid, or the digital character board in the Lobby Atrium.

## SHIP DIRECTORY

### YOUTH ACTIVITIES

DISNEY'S OCEANEER CLUB	DECK 5, MID	10:00 AM - 12:00 AM
DISNEY'S OCEANEER LAB	DECK 5, MID	7:30 AM - 12:00 AM
EDGE	DECK 13, MID	10:00 AM - 1:00 AM
VIBE	DECK 4, FWD	12:00 PM - 2:00 AM
IT'S A SMALL WORLD NURSERY	DECK 5, MID	7:30 AM - 11:00 PM

### POOLS & MORE

\* Children under 12 must have adult supervision in pool areas.

AQUADUCK	DECK 12, MID	12:00 PM - 10:00 PM
AQUALAB	DECK 12, AFT	12:00 PM - 6:00 PM
DONALD'S POOL	DECK 11, MID	12:00 PM - 10:00 PM
MICKEY'S POOL	DECK 11, MID	9:00 AM - 10:00 PM
MICKEY'S SLIDE	DECK 11, MID	9:00 AM - 6:00 PM
NEMO'S REEF	DECK 11, MID	9:00 AM - 6:00 PM
QUIET COVE POOL (18+)	DECK 11, FWD	8:00 AM - 11:00 PM
SATELLITE FALLS (18+)	DECK 13, FWD	6:00 AM - 8:00 PM

Please note, "selfie sticks" are not permitted in the pools or on the slides.

Complimentary pool vests are available for children to use in the pools onboard.  
They are located on the pool deck.

### RECREATION

GOLF/SPORTS SIMULATORS	DECK 13, AFT	9:00 AM - 6:00 PM
GOOFY GOLF	DECK 13, AFT	8:00 AM - 10:00 PM
GOOFY'S SPORTS DECK	DECK 13, AFT	8:00 AM - 6:00 PM
MIDSHIP DETECTIVE AGENCY	DECKS 2 & 5, MID	9:00 AM - 10:00 PM
PORT ADVENTURES DESK	DECK 5, MID	7:30 AM - 10:00 AM
SENSES FITNESS CENTER (18+)	DECK 11, FWD	6:00 AM - 10:00 PM

### GENERAL INFORMATION

ARR-CADE	DECK 11, AFT	24 HOURS
CONNECT@SEA	DECK 4, MID	8:00 AM - 10:00 AM 4:00 PM - 6:00 PM 7:00 PM - 10:00 PM
DISNEY VACATION CLUB	DECK 4, MID	5:00 PM - 10:00 PM
DISNEY VACATION PLANNING	DECK 4, MID	8:00 AM - 10:00 AM 4:00 PM - 10:00 PM
GUEST SERVICES	DECK 3, MID	24 HOURS
HAIR BRAIDING	DECK 11, MID	2:00 PM - 9:30 PM
MEDICAL HEALTH CENTER	DECK 1, FWD	9:30 AM - 11:00 AM 4:30 PM - 7:00 PM
PORT SHOPPING DESK	DECK 4, MID	7:30 PM - 8:30 PM
PRELUDES	DECK 3, FWD	5:45 PM - 11:15 PM
SENSES SPA AND SALON	DECK 11, FWD	8:00 AM - 10:00 PM
SHUTTERS PHOTO GALLERY	DECK 4, MID	5:00 PM - 10:30 PM
SHUTTERS DIGITAL	DECK 4, MID	5:00 PM - 10:30 PM

### SHOPPING

BIBBIDI BOBBIDI BOUTIQUE	DECK 5, MID	9:00 AM - 9:00 PM
MICKEY'S MAINSAIL	DECK 3, FWD	5:00 PM - 11:00 PM
QUACKS	DECK 11, MID	
SEA TREASURES	DECK 3, FWD	5:00 PM - 11:00 PM
VISTA GALLERY	DECK 4, MID	5:15 PM - 10:30 PM
WHITE CAPS	DECK 3, FWD	5:00 PM - 11:00 PM
WHOZITS & WHATZITS	DECK 11, MID	6:30 PM - 10:00 PM

## DINNER MENU

Animator's Palate : Prince & Princess  
Enchanted Garden : Prince & Princess  
Royal Court : Prince & Princess  
Dining Times: 5:45pm & 8:15pm

## DRINK OF THE DAY

Mai Tai (Alcoholic)  
Cranberry No-Jito  
Non-Alcoholic

## WEATHER FORECAST

Today: Partly Sunny  
High: 84°F/29°C  
Tomorrow: Sunny  
High: 88°F/31°C

## DINING & LOUNGES

### BREAKFAST

CABANAS CONTINENTAL	DECK 11, AFT	6:15 AM - 6:45 AM
CABANAS	DECK 11, AFT	6:45 AM - 10:30 AM
ROYAL COURT	DECK 3, MID	8:00 AM - 9:30 AM

### LUNCH

CABANAS	DECK 11, AFT	12:00 PM - 2:15 PM
FILLMORE'S FAVORITES	DECK 11, MID	10:45 AM - 6:30 PM
LUIGI'S PIZZA	DECK 11, MID	10:45 AM - 6:30 PM
ROYAL COURT	DECK 3, MID	12:00 PM - 1:30 PM
TOW MATER'S GRILL	DECK 11, MID	10:45 AM - 10:00 PM

### DINNER

ANIMATOR'S PALATE	DECK 3, AFT	5:45 PM & 8:15 PM
ENCHANTED GARDEN	DECK 2, MID	5:45 PM & 8:15 PM
ROYAL COURT	DECK 3, MID	5:45 PM & 8:15 PM
CABANAS TABLE SERVICE	DECK 11, AFT	6:30 PM - 8:30 PM
PALO (18+) (RESERVATIONS REQ. & NOM. FEE APPLIES)	DECK 12, AFT	6:00 PM - 8:30 PM
REMY (18+) (RESERVATIONS REQ. & NOM. FEE APPLIES)	DECK 12, AFT	6:00 PM - 8:30 PM

### LATE NIGHT SNACKS

LA PIAZZA (18+)	DECK 4, AFT	10:45 PM - 11:45 PM
LUIGI'S PIZZA	DECK 11, MID	9:30 PM - 12:00 AM

### ADDED FEATURES

BEVERAGE STATION	DECK 11, MID	24 HOURS
EYE SCREAM	DECK 11, MID	11:00 AM - 12:00 AM
ROOM SERVICE	DIAL 0	24 HOURS

### ENTERTAINMENT - LOUNGES - BARS

Adults must be 21 and older to consume alcoholic beverages.

BON VOYAGE	DECK 3, MID	3:00 PM - 11:00 PM
COVE BAR (18+)	DECK 11, FWD	11:00 AM - 10:30 PM
COVE CAFE (18+)	DECK 11, FWD	6:30 AM - 12:00 AM
CURRENTS (18+)	DECK 13, FWD	11:00 AM - 11:00 PM
D LOUNGE	DECK 4, MID	SHOWTIMES
FROZONE TREATS	DECK 11, MID	12:00 PM - 6:00 PM
LA PIAZZA (18+ AFTER 9:00 P.M.)	DECK 4, AFT	5:00 PM - 12:00 AM
MERIDIAN (18+)	DECK 12, AFT	3:00 PM - 12:00 AM
O'GILLS PUB (18+ AFTER 9:00 P.M.)	DECK 4, AFT	4:00 PM - 12:00 AM
OOH LA LA (18+)	DECK 4, AFT	6:00 PM - 12:00 AM
OUTLOOK	DECK 14, MID	
SKYLINE (18+)	DECK 4, AFT	5:00 PM - 12:30 AM
THE TUBE (18+ AFTER 9:00 P.M.)	DECK 4, AFT	9:30 PM - 2:00 AM
VISTA CAFE	DECK 4, MID	7:00 AM - 11:00 PM
WAVES	DECK 12, AFT	1:00 PM - 6:00 PM

Public Health Advisory: Consuming raw or under-cooked meats, poultry, seafood, shellfish, or eggs may increase your risk for food borne illness, especially if you have certain medical condition.

All Ashore: Approx. 7:45 am  
All Aboard: 4:00 pm

### SHIP'S AGENT IN ST. THOMAS

Virgin Port Services, 9003 Upper Havensight # 303,  
St. Thomas, USVI 00802  
Tel: 340 - 775-1151 or 340-514-3257

### IMPORTANT NUMBERS

Fire/Security: 7-3001  
Medical EMERGENCY: 7-3000  
Health Center: 7-1923