

PERSONAL NAVIGATOR

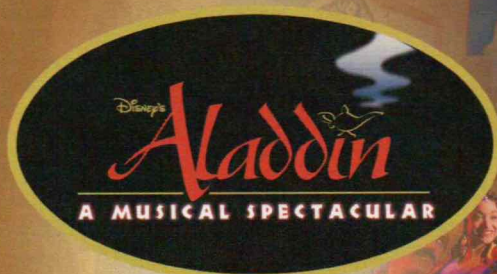


SUNDAY, AUGUST 28, 2016

Sunrise 6:44 am Sunset: 7:29 pm
Evening Attire: Formal

Today: Sunny High: 84°F/29°C
Tomorrow: Sunny High: 86°F/30°C

DAY AT SEA



A fast-paced, musical comedy based on the beloved animated film.

Aladdin, the "street rat" of Agrabah, meets a wise-cracking Genie, battles the evil Jafar, and falls in love with the beautiful and spirited Princess Jasmine. Disney storytelling at its best.

Assistance available at the entrance to the Walt Disney Theatre 30 minutes prior to show time.

WALT DISNEY THEATRE

Deck 3 & 4, Forward
6:15 pm & 8:30 pm

As a courtesy to all Guests, we kindly advise that the saving of seats is **not** permitted in the Walt Disney Theatre.

Disney FANTASY Fun Facts

Tonnage: 130,000 Gross Tons

Height: 216 Feet

Length: 1115 Feet

Important Dates

Name Announcement: March 10, 2009

Steel Cutting: March 16, 2010

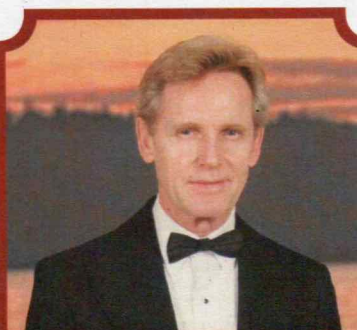
Keel Laying: February 11, 2011

Delivery: February 9, 2012

Almost four football fields in length, the Disney Fantasy is longer than the height of the Eiffel Tower in Paris (1,063 feet). She is also longer than the height of New York City's famous Chrysler building (1,047 feet).

The Disney Fantasy's Whistle

The Disney Fantasy's whistle, a prominent element of the "Sailing Away" deck party at the start of the cruise, is quite the musical talent. It's able to perform not just the first musical line of "When You Wish Upon a Star" but also the second line of the song ("makes no difference who you are") plus several measures of "Yo Ho (A Pirate's Life for Me)," "It's a Small World," "Be Our Guest," "Hi Diddle Dee Dee (An Actor's Life for Me)," "A Dream is a Wish," and "Do you want to build a Snowman".



CAPTAIN'S RECEPTION

Enjoy live music and a cocktail while meeting some of the ship's officers.

Lobby Atrium, Deck 3, Midship,

5:15 pm & 7:30 pm

Enjoy an exclusive photo opportunity with Commodore Tom at

5:30 pm & 7:30 pm, Lobby Atrium

Don't Miss:

Good Morning Disney Fantasy

Channel 5 - Repeated from 5:00 am - 12:00 pm

Tune in to channel 5 as your Cruise Director highlights the upcoming events and activities for the day.

Anyone Can Cook: Lobster Ravioli (18+)

D Lounge, Deck 4, Midship - 2:15 pm

From our galley to yours. Join our chefs as they show you how to prepare delicious dishes. Today's Menu - Lobster Ravioli.

Formal Night After Party

D Lounge, Deck 4, Midship - 9:45 pm

Join your Cruise Staff as we continue the party, with special appearances from the world famous Disney Characters.

Variety Show: Ricky Kalmon (18+)

The Tube, Deck 4, Aft - 10:30 pm

Featuring the Hypnosis & Comedy of Ricky Kalmon, as he entertains you in this adult exclusive show.



Welcome Aboard Photo Raffle

Stop at Shutters today before 11:00 am and drop off your raffle ticket, for a chance to win a 10 Digital Photo Package worth \$149.95.

*Terms & Condition apply.

DINNER MENU

Animator's Palate : Pacific Rim Cuisine
Enchanted Garden : Continental Market Cuisine
Royal Court : French Cuisine

DRINK OF THE DAY

Bahama Mama (Alcoholic)
Coco Bali (Non Alcoholic)

IMPORTANT NUMBERS

Fire/Security: 7-3001
Medical Emergency: 7-3000
Health Center: 7-1923

ADULT ACTIVITY HIGHLIGHTS

SENSES SPA FITNESS CLASSES & SEMINARS

Pure Form Pilates - Donald's Pool - 7:00 am
Fab Abs - Senses Fitness Center - 7:45 am
Body Sculpt Boot Camp (Nom. Fee) - Senses Fitness Center - 8:30 am
Introduction to Acupuncture - Senses Spa & Salon - 9:30 am
Detox for Health & Weight Loss - Senses Spa & Salon - 10:30 am
How to Look Ten Years Younger Today - Senses Spa & Salon - 11:30 am
Acupuncture Pain Relief - Senses Spa & Salon - 1:00 pm
Seminar: Improving Your Posture-Walk in Comfort - Senses Fitness Center - 2:00 pm
Seminar: Burn Fat Faster - Senses Fitness Center - 2:30 pm
Non-Surgical Facelift Seminar - Senses Spa & Salon - 3:15 pm
Tour De Cycle (Sign-Up Required) - Senses Fitness Center - 4:00 pm
Acupuncture: Stress, Insomnia and Depression - Senses Spa & Salon - 4:30 pm
Complimentary Footprint Analysis - Senses Spa & Salon - 5:00 pm

TASTING CLASSES

Chocolate & Liquor Tasting (21+) - Ooh La La - 12:15 pm
Martini Tasting (21+) - Meridian - 1:00 pm
Stem to Stern Wine Tasting (21+) - Ooh La La - 1:45 pm
Mixology (21+) - Meridian - 3:00 pm
Tequila & Margarita Tasting (21+) - Ooh La La - 4:30 pm
Whiskey Tasting (21+) - Cove Cafe - 10:00 pm
Cognac Tasting (21+) - Meridian - 10:30 pm
 Please make reservations for tastings at Guest Services for a nominal fee.
 Tasting Seminars are only for Guests 21 and older.

1820 SOCIETY: LUNCH

Cabanas, Deck 11, Aft - 12:00 pm
 Get to know your fellow Society members over lunch.

1820 SOCIETY: MINI GOLF

Goofy Golf, Deck 13, Aft - 3:45 pm
 Can you get a hole in one? Give it a try with some mini golf.

1820 SOCIETY: ICE CREAM SOCIAL

Frozone Treats, Deck 11, Midship - 10:00 pm
 Join your fellow Society members for some ice cream and conversation.

ART OF THE THEME SHOW TOUR

Meridian, Deck 12, Aft - 9:00 am
 Join us for a guided tour highlighting the design, Imagineering and artistry of the ship. This tour is reserved for Guests 18 and over.

PORT SHOPPING TALK

Buena Vista Theatre, Deck 4 & 5, Midship - 11:15 am
 Join your Port Shopping Guides to learn about the incredible tax & duty free shopping ashore this cruise! Free charm bracelet for all in attendance and a raffle to win over \$1000 in prizes and giveaways!

ANYONE CAN COOK: APPLE STRUDEL

D Lounge, Deck 4, Midship - 2:15 pm
 From our galley to yours. Join our chefs as they show you how to prepare delicious dishes. Today's Menu - Apple Strudel.

50'S AND 60'S MUSIC TRIVIA

O'Gills Pub, Deck 4, Aft - 7:30 pm
 Tune in for some trivia featuring popular music from the 50's and 60's.



FUN FOR ALL AGES HIGHLIGHTS

WAKE UP WITH DISNEY JUNIOR

D Lounge, Deck 4, Midship - 8:30 am
 What happens when you experience unlimited fun with your favorite Disney Junior shows? You get an exciting dance party designed especially for preschoolers ages seven and under.

DISNEY ANIMATION: CREATING A CHARACTER

D Lounge, Deck 4, Midship - 9:45 am
 Go behind the scenes at Walt Disney Animation Studios as Walt Disney himself talks about his most famous characters, then learn the basic techniques of drawing your favorite pals in this fun and interesting enrichment program.

TODDLER TIME

Outlook, Deck 14, Midship - 10:30 am & 3:30 pm
 Join us for some fun activities that your toddler is sure to enjoy.

SENSES SPA BINGO

Bingo Pre-Sales start at 11:00 am
D Lounge, Deck 4, Midship - 11:15 am
 Four CASH prizes to be won! Plus great spa prizes that will pamper you, including a mini facial and massages all courtesy of the Senses Spa and Salon. Serenity now! Pre-Sales start 15 minutes prior to game.

DISNEY MOVIE CHALLENGE POOLSIDE

Funnel Vision, Deck 11, Midship - 12:15 pm
 So you like movies? And you like bingo? This deck party has them both! Come on out to watch all your favorite movie clips and just maybe your team will win the opportunity to choose the movie played by the pool today!

MICKEY 200

The Tube, Deck 4, Aft - 12:00 pm
 Don't eat your vegetables... race them in this wild and wacky charge to the finish line. May the best veggie win! (Limited Availability)

DISNEY VACATION CLUB GROUP PREVIEW

D Lounge, Deck 4, Midship - 12:30 pm
 Want to learn more about taking magical vacations year after year? Please see a Disney Vacation Club representative on Deck 4, Midship, or call 7-2805 from your stateroom phone for more information about our interactive group presentation.

CHIP-IT GOLF (12+)

Lobby Atrium, Deck 3, Midship - 3:00 pm
 It's par for the course for our Guests 12 and older to compete on our special "greens" in this fun tournament.

\$5,000 MEGA JACKPOT BINGO

Bingo Pre-Sales start at 4:00 pm
D Lounge, Deck 4, Midship - 4:15 pm
 Don't miss your chance to take home big money! 4 CASH prize games and great raffle prizes to be won! Complete the fourth game in 46 numbers or less and win the \$5,000 Mega Jackpot! Pre-Sales start 15 minutes prior to game.

SO YOU THINK YOU KNOW YOUR FAMILY?

D Lounge, Deck 4, Midship - 7:30 pm
 This fun-filled family game show is always full of surprises. Find out how well you know, or don't know your family!

FAMILY SUPERSTAR KARAOKE

D Lounge, Deck 4, Midship - 10:30 pm
 Join your Cruise Staff and sing along to your favorite song - fun for everyone.

YOUTH ACTIVITIES HIGHLIGHTS

DINE & PLAY

A convenience for families dining at 8:15 pm, our Youth Activities counselors will be available at 9:15 pm at the entrance of Royal Court, Enchanted Garden and Animator's Palate dining rooms to bring registered children to join the fun in the Youth Activity areas.



Deck 5, Midship (7-1440)
(3-12 years old)

9:00 am - 12:00 am

CRUISIN' WITH CRUSH

2:00 pm

Swim on by Disney's Oceaneer Club and join Crush in an undersea adventure you'll never forget.

HEFFALUMP EXPODISHUN

4:30 pm

The Heffalump is missing! Help us find him before the Woozles do!



Deck 5, Midship (7-1445)
(3-12 years old)

9:00 am - 12:00 am

GET THE HOOK

3:15 pm

A villainous villain has stolen Captain Hook's prized golden hook. Become a member of the Top Deck Detective Agency and help solve the clues to retrieve Hook's hook.

PISTON CUP CHALLENGE

10:00 pm

It's Dinoco time and you're part of the pit crew! Design your own race car and see if you've got what it takes to end up in the winner's circle!



Deck 13, Midship (7-9743)
(11-14 years old)

9:00 am - 1:00 am

BRAINS AND BRAWNS

2:30 pm

You will compete against each other to solve clues, take part in physical challenges, and reach the finish first.

MAGIC SHOW

7:30 pm

The Magnificent Magician will demonstrate to you some of the best known magic tricks on the sea.



Entrance on Deck 4, Forward (7-9418)
(14-17 years old)

9:00 am - 2:00 am

ZOMBIFIED

12:00 pm

A big movie producer is looking for zombies to help him film the finale to his latest masterpiece, Zombified.

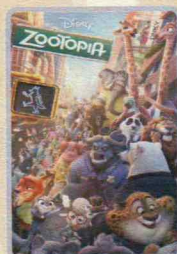
SPORTS DECK FUN

1:00 am

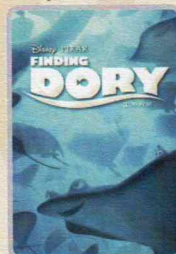
Take over the Sports Deck with some fun and friendly competition.

BUENA VISTA THEATRE

Deck 4 & 5, Midship
Today's Movies



FAMILY MOVIE
FUN TIME
8:30 am
Duration:
1 hr 48 mins
Rating: PG



DOLBY 3D
12:30 pm
Duration:
1 hr 45 mins
Rating: PG



3:00 pm
Duration:
1 hr 55 mins
Rating: PG



5:45 pm & 8:15 pm
Duration:
1 hr 42 mins
Rating: PG



DOLBY 3D
10:30 pm
Duration:
2 hrs 27 mins
Rating: PG-13



FAMILY VARIETY ACT

Enjoy the Musical Comedy and of Matt Jernigan in this fun-filled show for the entire family.

The Tube,
Deck 4, Aft,
2:00 pm & 7:30 pm



ADULT VARIETY ACT

Enjoy the Hypnosis and Comedy of Ricky Kalmon as he entertains you in this adult exclusive show.

The Tube (18+),
Deck 4, Aft,
10:30 pm

YOUTH ACTIVITIES OPEN HOUSE

Open House is an opportunity for all to come and participate in a variety of exciting activities and free time in the Oceaneer Club, Oceaneer Lab, it's a small world nursery, Vibe and Edge throughout the cruise. During these times secured programming will still be offered in the other venue for those looking to check their children into care.

Disney's Oceaneer Lab: 7:00 pm - 8:30 pm

Edge: 9:00 am - 10:00 am & 6:00 pm - 7:30 pm

Vibe: 9:00 am - 10:00 am & 7:30 pm - 9:00 pm

MORE TO ENJOY WHILE ONBOARD

EASTERN CARIBBEAN

Disney Cruise Line offers a variety of sailings to exotic ports in the Caribbean, including port of Tortola, in the British Virgin Islands. Most voyages even include a stop at Disney Castaway Cay. Visit the Disney Vacation Planning desk, Deck 4, Midship, for more information. Disney Vacation Planning tends to get busy on the last day of sailing. Don't miss the opportunity to plan your next Disney vacation.

DISNEY VACATION CLUB® GROUP PREVIEW

Want to learn more about taking magical vacations year after year? Please see a Disney Vacation Club representative on Deck 4, Midship, or call 7-2805 from your stateroom phone for more information about our interactive group presentation.

PORT SHOPPING INFORMATION

Join your Port Shopping Guides, Candice and Mark, to learn about the incredible shopping ashore this cruise! Everything will be covered from diamonds to t-shirts, Rolex to rum-cake. FREE charm bracelet for everyone who attends! Raffle to win OVER \$1000 in prizes & giveaways! 11:15 am, Buena Vista Theatre, Deck 4, Midship.

Connect@Sea

We are now offering a NEW and improved Internet service to stay connected on your cruise like no other in the industry! Internet packages range from \$0.25 per MB - \$89.00 (1000 MB package). For more information contact your Connect@Sea Expert or Guest Services onboard.

ONBOARD AIRLINE CHECK IN

Stop by the Guest Services Desk, Deck 3, Midship to find out about enrolling in our Onboard Airline Check In Service.

CASTAWAY CAY 5K REGISTRATION (10+)

Sign up today for the Castaway Cay 5K! Please visit the Port Adventures Desk or the Guest Services Desk to register at anytime prior to our arrival at Disney Castaway Cay. Please note that runners must be 10 years of age or older to participate.

MIDSHIP DETECTIVE AGENCY

The puppies from 101 Dalmatians have gone missing! Use your special detective "badge" to track down the puppies and catch the villain who took them. Decks 2 & 5, Midship.



SENSES
SPA & SALON

ONBOARD ACUPUNCTURE

Acupuncture is safe and effective medicine that allows your body to heal itself. It is painless, deeply relaxing and rejuvenating for mind and body, and is effective for various health conditions.

See your onboard Acupuncturist for your complimentary consultation.

Senses Spa & Salon, Deck 11, Forward, Extension 7-1465



SOPHIA FIORI DIAMONDS

Discover the elegant Disney inspired diamond jewelry collection by Sophia Fiori, one of the world's leading designers of diamond jewelry.

AVAILABLE AT WHITE CAPS
DECK 3, FORWARD

Shutters

FORMAL PORTRAITS TONIGHT!

Now that the family is dressed up and ready to enjoy the evening, capture the memories in your formal attire by visiting our professional portrait studios located in the Lobby Atrium, Deck 3, Midship.

5:15 pm - 6:00 pm

7:15 pm - 8:30 pm

9:30 pm - 10:15 pm

*Please note that photos are available for viewing on our interactive photo kiosks approximately five hours after being taken and are only available for purchase during this cruise.

Photo sizes are preset and cannot be changed.

PORT ADVENTURES

Port Adventures provide you and your family with the very best recreation, leisure and sightseeing in Tortola, St. Thomas and Castaway Cay. Whether exploring the Baths on Virgin Gorda, exploring coral reefs on the Captain Nautica Snorkeling Expedition, flying high on a parasailing adventure or just kicking back and relaxing on an Island tour. Whatever it is you choose to do, there is adventure waiting for you in each port.

Visit the **Port Adventures Desk, Deck 5, Midship**, for more information.

SHOPPING

BIBBIDI BOBBIDI BOUTIQUE

Young Princesses and Princes can get ready for a formal evening with a makeover at the Bibbidi Bobbidi Boutique. Make your reservations by visiting Bibbidi Bobbidi Boutique, Deck 5, Midship or dialing extension 7-9438. Limited space available.

TAG HEUER TIMEPIECES

Define the time-honored conventions of Swiss watchmaking with the latest releases from TAG Heuer. Find classic timepieces and more at White Caps, Deck 3, Forward.

RED CARPET SOPHIA FIORI DIAMOND UNVEILING

Drop in at White Caps today to meet the diamond specialist with Sophia Fiori. Whether you are a Hollywood celebrity or a full time Mom, every woman experiences a Red Carpet Moment when putting on Sophia Fiori Jewelry so treat yourself, you deserve it! Deck 3, Forward.

THOMAS KINKADE: HIDDEN CHARACTER CHALLENGE!

Known as the "Painter of Light," Thomas Kinkade is one of Disney's most celebrated artists having created an array of enchanting artwork. Stop by the Vista Gallery today to view his unique collection of paintings featuring some of your favorite Disney characters! Also, take the time to try and find all of the hidden Disney characters scattered throughout his paintings. Are you up to the challenge? Deck 4, Midship.

COLLECT YOUR DISNEY CRUISE LINE MEMORIES

Store the many happy memories you've photographed while on your Disney cruise inside a 2016 Disney Cruise Line photo album and scrapbook, available in Mickey's Mainsail, Deck 3, Forward.

IMPORTANT INFORMATION

Security Notice

All Guests (including children) who wish to disembark the ship are required to present their Key to the World card at the gangway. A photo ID is also required for those Guests who are 18 years of age or older. Guests under the age of 18 are required to have a parent, guardian or other responsible adult sign an authorization form at the Guest Service Desk if they wish to go ashore unaccompanied or with any adult from another stateroom.

Insect Repellent Advisory

Protect against mosquito bites and related illnesses when going ashore. Insect repellent is available for purchase in White Caps. When using both sunscreen and insect repellent, use sunscreen first and apply insect repellent on top of sunscreen.

Cold and Flu Reminder

Please wash hands frequently and thoroughly, particularly before meals. Contact the Health Center by dialing 7-1923, should anyone in your party become ill.

Corridor Quiet Hours

As a courtesy to all our Guests, please recognize quiet hallway hours from 10:00 pm to 8:00 am.

Inclement Weather

For the safety of all Guests, outdoor events may be changed due to unforeseen weather conditions.

Environmental Message

With Disney's commitment to the Environment, please refrain from throwing anything over the Ship's side. Thank you!

No Reserved Seats Policy

As a courtesy to all our Guests, we kindly advise that the saving of seats is not permitted in the Walt Disney Theatre, and the saving of the sun loungers is not permitted on Deck 11, 12, and 13. Items left unattended will be returned to lost and found at Guest Services, Deck 3 Midship.

Smoking

For the comfort of our Guests, the following areas are designated as smoking areas:
*Deck 13, forward, port side by Currents
*Deck 12, aft, port side outdoor area that is accessible through the Meridian Lounge
*Deck 4, aft, port side from 6:00 pm to 6:00 am only (all of Deck 4 is non-smoking from 6:00 am to 6:00 pm)
Smoking is prohibited inside all Guest staterooms and on stateroom verandahs. Guests found smoking in their staterooms or on their verandahs will be charged a \$250 stateroom recovery fee. Electronic cigarettes may only be used in designated smoking areas.

Walt Disney Theatre

Theatrical performances may use artificial fog, strobe lights, pyrotechnics and other special effects. For the safety of our performers and the comfort of those around you, the use of any photography, video recording device or any electronic equipment is prohibited.

Verandah Safety

Please do not leave any combustible materials on your balcony when not present in your stateroom for safety reasons.

Morning	8:30	8:45	9:00	9:15	9:30	9:45	10:00	10:15	10:30	10:45	11:00	11:15	11:30	11:45	12:00	12:15	12:30	12:45	1:00	1:15	1:30														
FUNNEL VISION	A Goofy Movie (G) Funnel Vision					Frozen (PG) Funnel Vision					Movie Challenge Poolside Funnel Vision																								
BUENA VISTA THEATRE	Family Movie Fun Time: Zootopia (PG) Duration: 1 Hour 48 Minutes										Port Shopping Talk					Finding Dory (PG) Duration: 1 Hour 45 Minutes																			
CHARACTERS	Minnie Dk 4, Balcony	Woody Lobby Atrium (V)	Pluto Dk 4, Balcony		Goofy Dk 4, Balcony		Pluto Dk 4, Balcony										Peter Pan Preludes			Stitch Dk 4, Balcony															
FUN FOR ALL AGES				Jessie Lobby Atrium (V)		Woody Lobby Atrium (V)		Jessie Lobby Atrium (V)											Cpt. Hook Preludes																
				Crafts: 3D Crafts La Piazza				Disney Trivia La Piazza		Bingo Pre Sales	Senses Spa BINGO D Lounge							Team Trivia La Piazza																	
	Interdenominational Service Outlook (Guest Led)					Walking Ship Tour Preludes		Toddler Time Outlook		Crafts: Door Hangers La Piazza		Mickey 200 The Tube (Limited availability) D Lounge		Disney Vacation Club Group Preview																					
ADULTS	Friends of Bill W. Outlook		Art of The Theme Show Tour Meridian			Pub Quiz O'Gills Pub		Crafts: Tile Coasters O'Gills Pub		ESPN Dream Team Draft Day - Baseball O'Gills Pub		Port Shopping Talk Buena Vista Theatre		1820 Society: Lunch Cabanas		Cruisin' Solo Lunch Royal Court		Animation Class The Tube																	
	Boot Camp (Nom. Fee) Senses Fitness Center														TV Tunes Trivia O'Gills Pub		Crafts: Origami Creations O'Gills Pub																		
VIBE 14-17 YEARS OLD	Youth Activities Open House					Open for Teens		Coffee Break		Disney Scene It		Zombified																							
EDGE 11-14 YEARS OLD	Youth Activities Open House					GAGA Ball				Disney Animation: Creating a Character				Guesstures				Marshmallow Olympics																	
OCEANEER LAB 3-12 YEARS OLD	Stitch's Adventure Squad					Super Sloppy Science					Wacky Relays					Lunch					Magic PlayFloor														
OCEANEER CLUB 3-12 YEARS OLD	Pre-School Fun (3-5 Years Old)					Aloha Luau															Mickey's Puzzle Playtime														
	Little Einstein's Adventure					Magic Show																													
Afternoon	1:45	2:00	2:15	2:30	2:45	3:00	3:15	3:30	3:45	4:00	4:15	4:30	4:45	5:00	5:15	5:30	5:45	6:00	6:15	6:30	6:45														
FUNNEL VISION	Big Hero 6 (PG) Funnel Vision										Brother Bear (G) Funnel Vision																								
BUENA VISTA THEATRE	The BFG (PG) Duration: 1 Hour 55 Minutes										Pete's Dragon (PG) Duration: 1 Hour 42 Minutes																								
CHARACTERS		Donald Dk 4, Balcony					Pluto Dk 4, Balcony		Chip & Dale Dk 4, Balcony		Minnie Dk 4, Balcony			Mickey Mouse Dk 4, Balcony		Minnie Preludes																			
	Peter Pan Preludes			Stitch Dk 4, Balcony				Minnie Preludes		Donald Preludes		Daisy Preludes		Goofy Preludes																					
FUN FOR ALL AGES					Chip-It Golf (12+) Lobby Atrium		Ice Breakers The Tube		Bingo Pre Sales		\$5,000 Mega Jackpot BINGO D Lounge		Captain's Welcome Reception Lobby Atrium																						
					ESPN Dream Team Draft Day - Baseball O'Gills Pub								Live Music with The Royal Duo Lobby Atrium																						
	Crafts: Origami Creations La Piazza				Disney Tunes Trivia D Lounge				Family Crafts La Piazza				Live Music with Summer Breeze La Piazza																						
ADULTS	Movie Quotes Trivia O'Gills Pub						Who Am I? La Piazza		1820 Society: Mini Golf Goofy Golf		Ultimate Disney Trivia O'Gills Pub		Live Guitar with Selkie O'Gills Pub		Footprint Analysis Senses Spa & Salon																				
VIBE 14-17 YEARS OLD	Zombified		Dive into DJ'ing			Scavenger Hunt			ESPN Dream Team Draft Day - Football			Foosball Tournament			Brain Teasers																				
EDGE 11-14 YEARS OLD	Craft Corner		Brains and Brawns			Anyone Can Cook			Sports Deck Fun			Youth Activities Open House																							
OCEANEER LAB 3-12 YEARS OLD	Anyone Can Cook					Get the Hook					Four Square					Dinner					Pathfinders														
OCEANEER CLUB 3-12 YEARS OLD	Cruisin' with Crush					Tinker Bell's Talent Show															Heffalump Expodishun														
	Scavenger Hunt																																		
Evening	7:00	7:15	7:30	7:45	8:00	8:15	8:30	8:45	9:00	9:15	9:30	9:45	10:00	10:15	10:30	10:45	11:00	11:15	11:30	11:45	12:00														
FUNNEL VISION											Avengers: Age of Ultron (PG-13) Funnel Vision																								
BUENA VISTA THEATRE											Pete's Dragon (PG) Duration: 1 Hour 42 Minutes										Captain America: Civil War (PG-13) Duration: 2 Hours 27 Minutes														
CHARACTERS		Chip & Dale Preludes		Minnie Preludes							Daisy Preludes		Donald Preludes		Goofy Preludes																				
			Mickey Mouse Dk 4, Balcony		Stitch Preludes						Minnie Dk 4, Balcony		Mickey Dk 4, Balcony																						
FUN FOR ALL AGES			Captain's Welcome Reception Lobby Atrium								Formal Night After Party D Lounge																								
			Variety: Matt Jernigan The Tube										Live Music with Summer Breeze Lobby Atrium																						
			So You Think You Know Your Family? D Lounge																																
ADULTS			50's and 60's Music Trivia O'Gills Pub								Club DJ J Alan The Tube		The Quest The Tube		Variety: Ricky Kalmon The Tube		Going Underground with Club DJ J Alan The Tube		Live Guitar with Selkie Ooh La La																
			Live Piano with Aaron Lotzow La Piazza																																
VIBE 14-17 YEARS OLD	Youth Activities Open House					Wii Challenge					That's Hilarious					Gender Wars																			
EDGE 11-14 YEARS OLD	Open House		Magic Show			Pictionary			Video Game Challenge			Gender Wars			Tween Choice																				
OCEANEER LAB 3-12 YEARS OLD	Youth Activities Open House					Lights, Camera, Improv!					Piston Cup Challenge																								
	Anyone Can Cook: Cupcakes																																		
OCEANEER CLUB 3-12 YEARS OLD	Dress Up Fun					Magic PlayFloor					Pluto's Pajama Party																								
	Once Upon a Time															Cartoon Time																			

Symbol for activities that will be repeated during the cruise

FOLD

FOLD

YOUTH ACTIVITIES OPEN HOUSE

A non-secured program with activities for families, adults and children of all ages to enjoy together.

SUNDAY, AUGUST 28, 2016 - DAY AT SEA

BUENA VISTA THEATRE

Deck 4 & 5, Midship



FAMILY MOVIE
FUN TIME

DOLBY 3D

DOLBY 3D

8:30 am Duration: 1 hr 48 mins Rating: PG	12:30 pm Duration: 1 hr 45 mins Rating: PG	3:00 pm Duration: 1 hr 55 mins Rating: PG	5:45 pm & 8:15 pm Duration: 1 hr 42 mins Rating: PG	10:30 pm Duration: 2 hrs 27 mins Rating: PG-13
--	---	--	---	---

Character Appearances

MINNIE MOUSE

Deck 4, Balcony
8:30 am, 4:30 pm & 9:45 pm
Preludes
3:45 pm, 5:45 pm & 7:45 pm

WOODY

Lobby Atrium (V)
8:45 am & 9:45 am

PLUTO

Deck 4, Balcony
9:00 am, 10:00 am & 3:30 pm

JESSIE

Lobby Atrium (V)
9:15 am & 10:15 am

GOOFOY

Deck 4, Balcony - 9:30 am
Preludes
5:15 pm & 10:30 pm

PETER PAN

Preludes
12:45 pm & 1:45 pm

CAPTAIN HOOK

Preludes - 1:15 pm

STITCH

Deck 4, Balcony
1:30 pm, 2:30 pm & 8:15 pm

DONALD DUCK

Deck 4, Balcony - 2:00 pm
Preludes
4:15 pm & 10:00 pm

CHIP & DALE

Deck 4, Balcony - 4:00 pm
Preludes - 7:15 pm

DAISY DUCK

Preludes
4:45 pm & 9:30 pm

MICKEY MOUSE

Deck 4, Balcony
5:00 pm, 7:30 pm & 10:15 pm



(H) Hallway - (S) Starboard Side - (P) Port Side - (V) Vestibule

For details of daily Disney character appearances, refer to the character line on your Navigator Grid, or the digital character board in the Lobby Atrium.

IMPORTANT NUMBERS

Fire/Security: 7-3001
Medical Emergency: 7-3000
Health Center: 7-1923

SHIP DIRECTORY

YOUTH ACTIVITIES

DISNEY'S OCEANEER CLUB	DECK 5, MID	9:00 AM - 12:00 PM
DISNEY'S OCEANEER LAB	DECK 5, MID	9:00 AM - 12:00 PM
EDGE	DECK 13, MID	9:00 AM - 1:00 PM
VIBE	DECK 4, FWD	9:00 AM - 2:00 PM
IT'S A SMALL WORLD NURSERY	DECK 5, MID	9:00 AM - 11:30 PM

POOLS & MORE

* Children under 12 must have adult supervision in pool areas.

AQUADUCK	DECK 12, MID	9:00 AM - 10:00 PM
AQUALAB	DECK 12, AFT	9:00 AM - 6:00 PM
DONALD'S POOL	DECK 11, MID	9:00 AM - 10:00 PM
MICKEY'S POOL	DECK 11, MID	9:00 AM - 10:00 PM
MICKEY'S SLIDE	DECK 11, MID	9:00 AM - 6:00 PM
NEMO'S REEF	DECK 11, MID	9:00 AM - 6:00 PM
QUIET COVE POOL (18+)	DECK 11, FWD	8:00 AM - 11:00 PM
SATELLITE FALLS (18+)	DECK 13, FWD	6:00 AM - 8:00 PM

Please note, "selfie sticks" are not permitted in the pools or on the slides.

Complimentary pool vests are available for children to use in the pools onboard.
They are located on the pool deck.

RECREATION

GOLF/SPORTS SIMULATORS	DECK 13, AFT	9:00 AM - 6:00 PM
GOOFOY GOLF	DECK 13, AFT	8:00 AM - 10:00 PM
GOOFOY'S SPORTS DECK	DECK 13, AFT	8:00 AM - 6:00 PM
MIDSHIP DETECTIVE AGENCY	DECKS 2 & 5, MID	9:00 AM - 10:00 PM
PORT ADVENTURES DESK	DECK 5, MID	9:00 AM - 5:00 PM 7:00 PM - 8:30 PM
SENSES FITNESS CENTER (18+)	DECK 11, FWD	6:00 AM - 10:00 PM

GENERAL INFORMATION

ARR-CADE	DECK 11, AFT	24 HOURS
CONNECT@SEA	DECK 4, MID	9:00 AM - 12:00 PM 1:00 PM - 4:00 PM 7:00 PM - 10:00 PM
DISNEY VACATION CLUB	DECK 4, MID	9:00 AM - 11:00 AM 2:30 PM - 10:00 PM
DISNEY VACATION PLANNING	DECK 4, MID	10:00 AM - 8:30 PM
GUEST SERVICES	DECK 3, MID	24 HOURS
HAIR BRAIDING	DECK 11, MID	9:00 AM - 9:30 PM
MEDICAL HEALTH CENTER	DECK 1, FWD	9:30 AM - 11:00 AM 4:30 PM - 7:00 PM
PORT SHOPPING DESK	DECK 4, MID	7:30 PM - 8:30 PM
PRELUDES	DECK 3, FWD	12:30 PM - 2:30 PM 5:45 PM - 8:45 PM
SENSES SPA AND SALON	DECK 11, FWD	8:00 AM - 10:00 PM
SHUTTERS PHOTO GALLERY	DECK 4, MID	9:30 AM - 12:00 PM 7:30 PM - 11:00 PM
SHUTTERS DIGITAL	DECK 4, MID	9:30 AM - 12:00 PM 7:30 PM - 11:00 PM

SHOPPING

BIBBIDI BOBBIDI BOUTIQUE	DECK 5, MID	9:00 AM - 9:00 PM
MICKEY'S MAINSAIL	DECK 3, FWD	9:30 AM - 11:00 PM
QUACKS	DECK 11, MID	
SEA TREASURES	DECK 3, FWD	9:30 AM - 11:00 PM
VISTA GALLERY	DECK 4, MID	9:45 AM - 10:30 PM
WHITE CAPS	DECK 3, FWD	9:30 AM - 11:00 PM
WHOZITS & WHATZITS	DECK 11, MID	10:00 AM - 4:00 PM 7:00 PM - 10:00 PM

DINNER MENU

Animator's Palate : Pacific Rim Cuisine
Enchanted Garden : Continental Market Cuisine
Royal Court : French Cuisine

Dining Times: 5:45pm & 8:15pm

DRINK OF THE DAY

Bahama Mama (Alcoholic)
Coco Ball (Non Alcoholic)

WEATHER FORECAST

Today: Sunny
High: 84°F/29°C
Tomorrow: Sunny
High: 86°F/30°C

Evening Attire: Formal

DINING & LOUNGES

BREAKFAST

CABANAS CONTINENTAL	DECK 11, AFT	7:00 AM - 7:30 AM
CABANAS	DECK 11, AFT	7:30 AM - 11:30 AM
ROYAL COURT	DECK 3, MID	8:30 AM - 10:00 AM

LUNCH

CABANAS	DECK 11, AFT	11:45 AM - 2:00 PM
FILLMORE'S FAVORITES	DECK 11, MID	11:00 AM - 6:30 PM
LUIGI'S PIZZA	DECK 11, MID	11:00 AM - 6:30 PM
PALO BRUNCH (18+) (RESERVATIONS REQ. & NOM. FEE APPLIES)	DECK 12, AFT	10:00 AM - 12:30 PM
ROYAL COURT	DECK 3, MID	12:00 PM - 1:30 PM
TOW MATER'S GRILL	DECK 11, MID	11:00 AM - 11:00 PM

DINNER

ANIMATOR'S PALATE	DECK 3, AFT	5:45 PM & 8:15 PM
ENCHANTED GARDEN	DECK 2, MID	5:45 PM & 8:15 PM
ROYAL COURT	DECK 3, MID	5:45 PM & 8:15 PM
CABANAS TABLE SERVICE	DECK 11, AFT	6:30 PM - 8:30 PM
PALO (18+) (RESERVATIONS REQ. & NOM. FEE APPLIES)	DECK 12, AFT	6:00 PM - 8:30 PM
REMY (18+) (RESERVATIONS REQ. & NOM. FEE APPLIES)	DECK 12, AFT	6:00 PM - 8:30 PM

LATE NIGHT SNACKS

LA PIAZZA (18+)	DECK 4, AFT	10:45 PM - 11:45 PM
LUIGI'S PIZZA	DECK 11, MID	9:30 PM - 12:00 AM

ADDED FEATURES

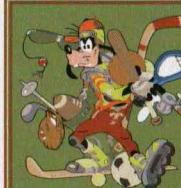
BEVERAGE STATION	DECK 11, MID	24 HOURS
EYE SCREAM	DECK 11, MID	11:00 AM - 11:00 PM
ROOM SERVICE	DIAL 0	24 HOURS

ENTERTAINMENT - LOUNGES - BARS

Adults must be 21 and older to consume alcoholic beverages.

BON VOYAGE	DECK 3, MID	9:00 AM - 11:00 PM
COVE BAR (18+)	DECK 11, FWD	10:00 AM - 10:30 PM
COVE CAFE (18+)	DECK 11, FWD	6:30 AM - 12:00 AM
CURRENTS (18+)	DECK 13, FWD	10:00 AM - 11:30 PM
D LOUNGE	DECK 4, MID	SHOWTIMES
FROZONE TREATS	DECK 11, MID	10:00 AM - 6:00 PM
LA PIAZZA (18+ AFTER 9:00 P.M.)	DECK 4, AFT	12:00 PM - 12:00 AM
MERIDIAN (18+)	DECK 12, AFT	10:00 AM - 12:00 AM
O'GILLS PUB (18+ AFTER 9:00 P.M.)	DECK 4, AFT	12:00 PM - 12:00 AM
OOH LA LA (18+)	DECK 4, AFT	5:30 PM - 12:00 AM
OUTLOOK	DECK 14, MID	
SKYLINE (18+)	DECK 4, AFT	5:30 PM - 12:30 AM
THE TUBE (18+ AFTER 9:00 P.M.)	DECK 4, AFT	7:00 PM - 8:30 PM 9:30 PM - 2:00 AM
VISTA CAFE	DECK 4, MID	7:00 AM - 11:00 PM
WAVES	DECK 12, AFT	10:00 AM - 6:00 PM

Public Health Advisory: Consuming raw or under-cooked meats, poultry, seafood, shellfish, or eggs may increase your risk for food borne illness, especially if you have certain medical condition.



GOOFOY'S SPORTS Digital Simulators

Sports Simulator

(Basketball, Baseball, Hockey, Football or Soccer) \$13 / half hr, \$22 / hr

Golf Simulator

\$28 / half hr, \$49 / hr

Reservations can be made at the Port Adventures Desk, Deck 5, Midship or at the Simulators, Deck 13, Aft.