

PERSONAL NAVIGATOR

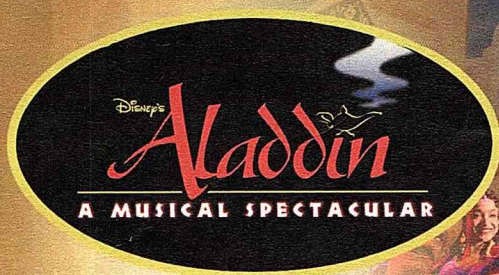


SUNDAY, AUGUST 14, 2016

Sunrise 6:38 am Sunset: 7:43 pm
Evening Attire: Formal

Today: Sunny High: 84°F/29°C
Tomorrow: Sunny High: 82°F/28°C

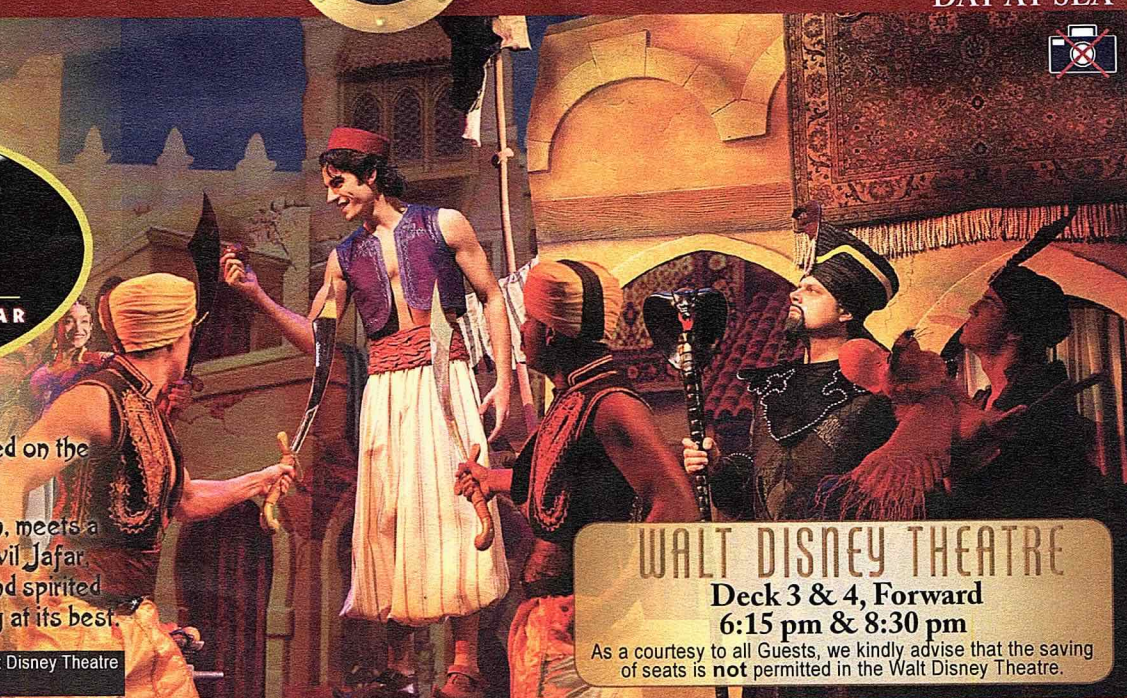
DAY AT SEA



A fast-paced, musical comedy based on the beloved animated film.

Aladdin, the "street rat" of Agrabah, meets a wise-cracking Genie, battles the evil Jafar, and falls in love with the beautiful and spirited Princess Jasmine. Disney storytelling at its best.

Assistance available at the entrance to the Walt Disney Theatre 30 minutes prior to show time.



WALT DISNEY THEATRE

Deck 3 & 4, Forward
6:15 pm & 8:30 pm

As a courtesy to all Guests, we kindly advise that the saving of seats is not permitted in the Walt Disney Theatre.

Disney FANTASY Fun Facts

Tonnage: 130,000 Gross Tons

Height: 216 Feet

Length: 1115 Feet

Important Dates

Name Announcement: March 10, 2009

Steel Cutting: March 16, 2010

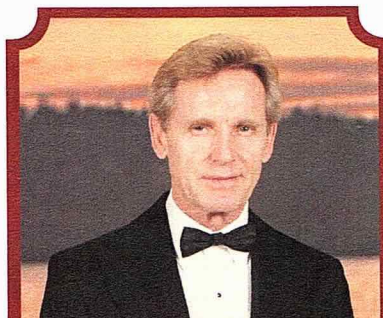
Keel Laying: February 11, 2011

Delivery: February 9, 2012

Almost four football fields in length, the Disney Fantasy is longer than the height of the Eiffel Tower in Paris (1,063 feet). She is also longer than the height of New York City's famous Chrysler building (1,047 feet).

The Disney Fantasy's Whistle

The Disney Fantasy's whistle, a prominent element of the "Sailing Away" deck party at the start of the cruise, is quite the musical talent. It's able to perform not just the first musical line of "When You Wish Upon a Star" but also the second line of the song ("makes no difference who you are") plus several measures of "Yo Ho (A Pirate's Life for Me)," "It's a Small World," "Be Our Guest," "Hi Diddle Dee Dee (An Actor's Life for Me)," "A Dream is a Wish," and "Do you want to build a Snowman".



CAPTAIN'S RECEPTION

Enjoy live music and a cocktail while meeting some of the ship's officers.

Lobby Atrium, Deck 3, Midship,
5:15 pm & 7:30 pm

Enjoy an exclusive photo opportunity with Commodore Tom at

5:30 pm & 7:30 pm, Lobby Atrium

Don't Miss:

Good Morning Disney Fantasy

Channel 5 - Repeated from 5:00 am - 12:00 pm

Tune in to channel 5 as your Cruise Director highlights the upcoming events and activities for the day.

Anyone Can Cook: Lobster Ravioli (18+)

D Lounge, Deck 4, Midship - 2:15 pm

From our galley to yours. Join our chefs as they show you how to prepare delicious dishes. Today's Menu - Lobster Ravioli.

Variety Show: Charles Peachock (18+)

The Tube, Deck 4, Aft - 9:45 pm & 10:45 pm

Featuring the Physical Comedy of Charles Peachock, as he entertains you in this adult exclusive show.

Formal Night After Party

D Lounge, Deck 4, Midship - 9:45 pm

Join your Cruise Staff as we continue the party, with special appearances from the world famous Disney Characters.



Welcome Aboard Photo Raffle

Stop at Shutters today before 11:00 am and drop of your raffle ticket, for a chance to win a 10 Digital Photo Package worth \$149.95.

*Terms & Condition apply.

DINNER MENU

Animator's Palate: Pacific Rim Cuisine

Enchanted Garden: Continental Market Cuisine

Royal Court: French Cuisine

DRINK OF THE DAY

Bahama Mama (Alcoholic)

Coco Bali (Non Alcoholic)

IMPORTANT NUMBERS

Fire/Security: 7-3001

Medical Emergency: 7-3000

Health Center: 7-1923

ADULT ACTIVITY HIGHLIGHTS



SENSES SPA FITNESS CLASSES & SEMINARS

Pure Form Pilates - Donald's Pool - 7:00 am
Fab Abs - Senses Fitness Center - 7:45 am
Body Sculpt Boot Camp (Nom. Fee) - Senses Fitness Center - 8:30 am
Introduction to Acupuncture - Senses Spa & Salon - 9:30 am
Detox for Health & Weight Loss - Senses Spa & Salon - 10:30 am
How to Look Ten Years Younger Today - Senses Spa & Salon - 11:30 am
Acupuncture Pain Relief - Senses Spa & Salon - 1:00 pm
Seminar: Improving Your Posture-Walk in Comfort - Senses Fitness Center - 2:00 pm
Seminar: Burn Fat Faster - Senses Fitness Center - 2:30 pm
Non-Surgical Facelift Seminar - Senses Spa & Salon - 3:15 pm
Tour De Cycle (Sign-Up Required) - Senses Fitness Center - 4:00 pm
Acupuncture: Stress, Insomnia and Depression - Senses Spa & Salon - 4:30 pm
Complimentary Footprint Analysis - Senses Spa & Salon - 5:00 pm

TASTING CLASSES

Chocolate & Liquor Tasting (21+) - Ooh La La - 12:15 pm
Martini Tasting (21+) - Meridian - 1:00 pm
Stem to Stern Wine Tasting (21+) - Ooh La La - 1:45 pm
Mixology (21+) - Meridian - 3:00 pm
Tequila & Margarita Tasting (21+) - Ooh La La - 4:30 pm
Whiskey Tasting (21+) - Cove Cafe - 10:00 pm
Cognac Tasting (21+) - Meridian - 10:30 pm
 Please make reservations for tastings at Guest Services for a nominal fee.
 Tasting Seminars are only for Guests 21 and older.

1820 SOCIETY: LUNCH

Cabanas, Deck 11, Aft - 12:00 pm
 Get to know your fellow Society members over lunch.



1820 SOCIETY: MINI GOLF

Goofy Golf, Deck 13, Aft - 3:45 pm
 Can you get a hole in one? Give it a try with some mini golf.

1820 SOCIETY: ICE CREAM SOCIAL

Frozone Treats, Deck 11, Midship - 10:00 pm
 Join your fellow Society members for some ice cream and conversation.

ART OF THE THEME SHOW TOUR

Meridian, Deck 12, Aft - 10:15 am
 Join us for a guided tour highlighting the design, Imagineering and artistry of the ship. This tour is reserved for Guests 18 and over.

PORT SHOPPING TALK

Buena Vista Theatre, Deck 4 & 5, Midship - 11:15 am
 Join your Port Shopping Guides to learn about the incredible tax & duty free shopping ashore this cruise! Free charm bracelet for all in attendance and a raffle to win over \$1000 in prizes and giveaways!

TRIBUTE TO FRANK SINATRA WITH CHUCK PERRY

La Piazza, Deck 4, Aft - 7:30 pm
 Join Chuck Perry as he plays live for your listening pleasure.

50'S AND 60'S MUSIC TRIVIA

O'Gills Pub, Deck 4, Aft - 7:30 pm
 Tune in for some trivia featuring popular music from the 50's and 60's.



FUN FOR ALL AGES HIGHLIGHTS



WAKE UP WITH DISNEY JUNIOR

D Lounge, Deck 4, Midship - 8:30 am
 What happens when you experience unlimited fun with your favorite Disney Junior shows? You get an exciting dance party designed especially for preschoolers ages seven and under.



DISNEY ANIMATION: CREATING A CHARACTER

D Lounge, Deck 4, Midship - 9:45 am
 Go behind the scenes at Walt Disney Animation Studios as Walt Disney himself talks about his most famous characters, then learn the basic techniques of drawing your favorite pals in this fun and interesting enrichment program.

TODDLER TIME

Outlook, Deck 14, Midship - 10:30 am & 1:00 pm
 Join us for some fun activities that your toddler is sure to enjoy.



SENSES SPA BINGO

Bingo Pre-Sales start at 11:00 am
D Lounge, Deck 4, Midship - 11:15 am
 Four CASH prizes to be won! Plus great spa prizes that will pamper you, including a mini facial and massages all courtesy of the Senses Spa and Salon. Serenity now! Pre-Sales start 15 minutes prior to game.



DISNEY VACATION CLUB GROUP PREVIEW

D Lounge, Deck 4, Midship - 12:30 pm
 Want to learn more about taking magical vacations year after year? Please see a Disney Vacation Club representative on Deck 4, Midship, or call 7-2805 from your stateroom phone for more information about our interactive group presentation.



MICKEY 200

The Tube, Deck 4, Aft - 1:00 pm
 Don't eat your vegetables... race them in this wild and wacky charge to the finish line. May the best veggie win! (Limited Availability)



CHIP-IT GOLF (12+)

Lobby Atrium, Deck 3, Midship - 3:00 pm
 It's par for the course for our Guests 12 and older to compete on our special "greens" in this fun tournament.



\$5,000 MEGA JACKPOT BINGO

Bingo Pre-Sales start at 4:00 pm
D Lounge, Deck 4, Midship - 4:15 pm
 Don't miss your chance to take home big money! 4 CASH prize games and great raffle prizes to be won! Complete the fourth game in 46 numbers or less and win the \$5,000 Mega Jackpot! Pre-Sales start 15 minutes prior to game.



SO YOU THINK YOU KNOW YOUR FAMILY?

D Lounge, Deck 4, Midship - 7:30 pm
 This fun-filled family game show is always full of surprises. Find out how well you know, or don't know your family!



FAMILY SUPERSTAR KARAOKE

D Lounge, Deck 4, Midship - 10:30 pm
 Join your Cruise Staff and sing along to your favorite song - fun for everyone.

YOUTH ACTIVITIES HIGHLIGHTS

DINE & PLAY

A convenience for families dining at 8:15 pm, our Youth Activities counselors will be available at 9:15 pm at the entrance of Royal Court, Enchanted Garden and Animator's Palate dining rooms to bring registered children to join the fun in the Youth Activity areas.



Deck 5, Midship (7-1440)
(3-12 years old)

9:00 am - 12:00 am

CRUISIN' WITH CRUSH

2:00 pm

Swim on by Disney's Oceaneer Club and join Crush in an undersea adventure you'll never forget.

HEFFALUMP EXPODISHUN

4:30 pm

The Heffalump is missing! Help us find him before the Woozles do!



Deck 5, Midship (7-1445)
(3-12 years old)

9:00 am - 12:00 am

GET THE HOOK

3:15 pm

A villainous villain has stolen Captain Hook's prized golden hook. Become a member of the Top Deck Detective Agency and help solve the clues to retrieve Hook's hook.

PISTON CUP CHALLENGE

10:00 pm

It's Dinoco time and you're part of the pit crew! Design your own race car and see if you've got what it takes to end up in the winner's circle!



Deck 13, Midship (7-9743)
(11-14 years old)

9:00 am - 1:00 am

BRAINS AND BRAWNS

2:30 pm

You will compete against each other to solve clues, take part in physical challenges, and reach the finish first.

MAGIC SHOW

7:30 pm

The Magnificent Magician will demonstrate to you some of the best known magic tricks on the sea.



Entrance on Deck 4, Forward (7-9418)
(14-17 years old)

9:00 am - 2:00 am

ZOMBIFIED

12:00 pm

A big movie producer is looking for zombies to help him film the finale to his latest masterpiece, Zombified.

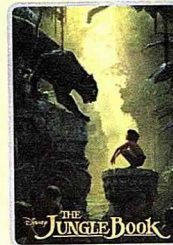
SPORTS DECK FUN

1:00 am

Take over the Sports Deck with some fun and friendly competition.

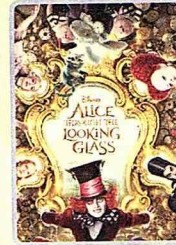
BUENA VISTA THEATRE

Deck 4 & 5, Midship
Today's Movies



OC Open Captioning

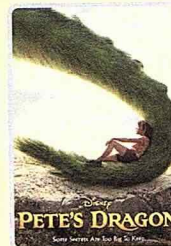
8:30 am
Duration:
1 hr 46 mins
Rating: PG



12:30 pm
Duration:
1 hr 48 mins
Rating: PG



3:00 pm
Duration:
1 hr 55 mins
Rating: PG

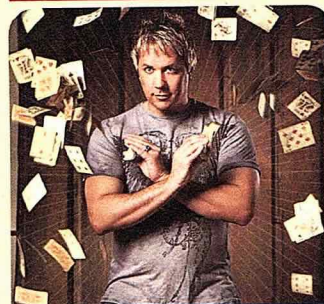


5:45 pm & 8:15 pm
Duration:
1 hr 42 mins
Rating: PG



DOLBY 3D

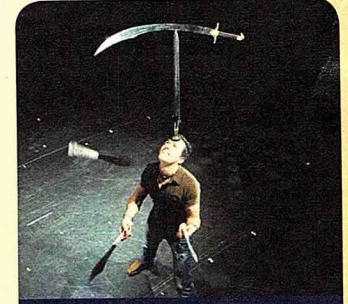
10:30 pm
Duration:
2 hrs 27 mins
Rating: PG-13



FAMILY VARIETY ACT

Featuring the
Magic and Illusions
of Mike Super,
as he entertains the
entire family in this
fun-filled show.

**Walt Disney Theatre,
Deck 3, Forward,
2:00 pm**



ADULT VARIETY ACT

Featuring the
Physical Comedy
of Charles Peachcock,
as he entertains you in this
adult exclusive show.

**The Tube (18+),
Deck 4, Aft,
9:45 pm & 10:45 pm**

YOUTH ACTIVITIES OPEN HOUSE

Open House is an opportunity for all to come and participate in a variety of exciting activities and free time in the Oceaneer Club, Oceaneer Lab, it's a small world nursery, Vibe and Edge throughout the cruise. During these times secured programming will still be offered in the other venue for those looking to check their children into care.

Disney's Oceaneer Lab: 7:00 pm - 8:30 pm

Edge: 9:00 am - 10:00 am & 6:00 pm - 7:30 pm
Vibe: 9:00 am - 10:00 am & 7:30 pm - 9:00 pm

MORE TO ENJOY WHILE ONBOARD

EASTERN CARIBBEAN

Disney Cruise Line offers a variety of sailings to exotic ports in the Caribbean, including port of Tortola, in the British Virgin Islands. Most voyages even include a stop at Disney Castaway Cay. Visit the Disney Vacation Planning desk, Deck 4, Midship, for more information. Disney Vacation Planning tends to get busy on the last day of sailing. Don't miss the opportunity to plan your next Disney vacation.

DISNEY VACATION CLUB® GROUP PREVIEW

Want to learn more about taking magical vacations year after year? Please see a Disney Vacation Club representative on Deck 4, Midship, or call 7-2805 from your stateroom phone for more information about our interactive group presentation.

PORT SHOPPING INFORMATION

Join your Port Shopping Guides, Candice and Mark, to learn about the incredible shopping ashore this cruise! Everything will be covered from diamonds to t-shirts, Rolex to rum-cake. FREE charm bracelet for everyone who attends! Raffle to win OVER \$1000 in prizes & giveaways! 11:15 am, Buena Vista Theatre, Deck 4, Midship.

Connect@Sea

We are now offering a NEW and improved Internet service to stay connected on your cruise like no other in the industry! Internet packages range from \$0.25 per MB - \$89.00 (1000 MB package). For more information contact your Connect@Sea Expert or Guest Services onboard.

ONBOARD AIRLINE CHECK IN

Stop by the Guest Services Desk, Deck 3, Midship to find out about enrolling in our Onboard Airline Check In Service.

CASTAWAY CAY 5K REGISTRATION (10+)

Sign up today for the Castaway Cay 5K! Please visit the Port Adventures Desk or the Guest Services Desk to register at anytime prior to our arrival at Disney Castaway Cay. Please note that runners must be 10 years of age or older to participate.

MIDSHIP DETECTIVE AGENCY

The puppies from 101 Dalmatians have gone missing! Use your special detective "badge" to track down the puppies and catch the villain who took them. Decks 2 & 5, Midship.



SENSES
SPA & SALON

ONBOARD ACUPUNCTURE

Acupuncture is safe and effective medicine that allows your body to heal itself. It is painless, deeply relaxing and rejuvenating for mind and body, and is effective for various health conditions.

See your onboard Acupuncturist for your complimentary consultation.

Senses Spa & Salon, Deck 11, Forward, Extension 7-1465



SOPHIA FIORI DIAMONDS

Discover the elegant Disney inspired diamond jewelry collection by Sophia Fiori, one of the world's leading designers of diamond jewelry.

AVAILABLE AT WHITE CAPS
DECK 3, FORWARD

Shutters

FORMAL PORTRAITS TONIGHT!

Now that the family is dressed up and ready to enjoy the evening, capture the memories in your formal attire by visiting our professional portrait studios located in the Lobby Atrium, Deck 3, Midship.

5:15 pm - 6:00 pm

7:15 pm - 8:30 pm

9:30 pm - 10:15 pm

**Please note that photos are available for viewing on our interactive photo kiosks approximately five hours after being taken and are only available for purchase during this cruise. Photo sizes are preset and cannot be changed.*

PORT ADVENTURES

Port Adventures provide you and your family with the very best recreation, leisure and sightseeing in Tortola, St. Thomas and Castaway Cay. Whether exploring the Baths on Virgin Gorda, exploring coral reefs on the Captain Nautica Snorkeling Expedition, flying high on a parasailing adventure or just kicking back and relaxing on an Island tour. Whatever it is you choose to do, there is adventure waiting for you in each port.

Visit the **Port Adventures Desk, Deck 5, Midship**, for more information.

SHOPPING

BIBBIDI BOBBIDI BOUTIQUE

Young Princesses and Princes can get ready for a formal evening with a makeover at the Bibbidi Bobbidi Boutique. Make your reservations by visiting Bibbidi Bobbidi Boutique, Deck 5, Midship or dialing extension 7-9438. Limited space available.

TAG HEUER TIMEPIECES

Define the time-honored conventions of Swiss watchmaking with the latest releases from TAG Heuer. Find classic timepieces and more at White Caps, Deck 3, Forward.

RED CARPET SOPHIA FIORI DIAMOND UNVEILING

Drop in at White Caps today to meet the diamond specialist with Sophia Fiori. Whether you are a Hollywood celebrity or a full time Mom, every woman experiences a Red Carpet Moment when putting on Sophia Fiori Jewelry so treat yourself, you deserve it! Deck 3, Forward.

THOMAS KINKADE: HIDDEN CHARACTER CHALLENGE!

Known as the "Painter of Light," Thomas Kinkade is one of Disney's most celebrated artists having created an array of enchanting artwork. Stop by the Vista Gallery today to view his unique collection of paintings featuring some of your favorite Disney characters! Also, take the time to try and find all of the hidden Disney characters scattered throughout his paintings. Are you up to the challenge? Deck 4, Midship.

COLLECT YOUR DISNEY CRUISE LINE MEMORIES

Store the many happy memories you've photographed while on your Disney cruise inside a 2016 Disney Cruise Line photo album and scrapbook, available in Mickey's Mainsail, Deck 3, Forward.

IMPORTANT INFORMATION

Security Notice

All Guests (including children) who wish to disembark the ship are required to present their Key to the World card at the gangway. A photo ID is also required for those Guests who are 18 years of age or older. Guests under the age of 18 are required to have a parent, guardian or other responsible adult sign an authorization form at the Guest Service Desk if they wish to go ashore unaccompanied or with any adult from another stateroom.

Insect Repellent Advisory

Protect against mosquito bites and related illnesses when going ashore. Insect repellent is available for purchase in White Caps. When using both sunscreen and insect repellent, use sunscreen first and apply insect repellent on top of sunscreen.

Cold and Flu Reminder

Please wash hands frequently and thoroughly; particularly before meals. Contact the Health Center by dialing 7-1923, should anyone in your party become ill.

Corridor Quiet Hours

As a courtesy to all our Guests, please recognize quiet hallway hours from 10:00 pm till 8:00 am

Inclement Weather

For the safety of all Guests, outdoor events may be changed due to unforeseen weather conditions.

Environmental Message

With Disney's commitment to the Environment, please refrain from throwing anything over the Ship's side. Thank you!

No Reserved Seats Policy

As a courtesy to all our Guests, we kindly advise that the saving of seats is not permitted in the Walt Disney Theatre, and the saving of the sun loungers is not permitted on Deck 11, 12, and 13. Items left unattended will be returned to lost and found at Guest Services, Deck 3 Midship.

Smoking

For the comfort of our Guests, the following areas are designated as smoking areas:

*Deck 13, forward, port side by Currents

*Deck 12, aft, port side outdoor area that is accessible through the Meridian Lounge

*Deck 4, aft, port side from 6:00 pm to 6:00 am only (all of Deck 4 is non-smoking from 6:00 am to 6:00 pm)

Smoking is prohibited inside all Guest staterooms and on stateroom verandahs. Guests found smoking in their staterooms or on their verandahs will be charged a \$250 stateroom recovery fee. Electronic cigarettes may only be used in designated smoking areas.

Walt Disney Theatre

Theatrical performances may use artificial fog, strobe lights, pyrotechnics and other special effects. For the safety of our performers and the comfort of those around you, the use of any photography, video recording device or any electronic equipment is prohibited.

Verandah Safety

Please do not leave any combustible materials on your balcony when not present in your stateroom for safety reasons.

Morning	8:30	8:45	9:00	9:15	9:30	9:45	10:00	10:15	10:30	10:45	11:00	11:15	11:30	11:45	12:00	12:15	12:30	12:45	1:00	1:15	1:30				
FUNNEL VISION	A Goofy Movie (G) Funnel Vision					Frozen (PG) Funnel Vision										Movie Challenge Poolside Funnel Vision									
BUENA VISTA THEATRE	The Jungle Book (2016) (PG) Open Captioning Duration: 1 Hour 46 Minutes										Port Shopping Talk					Alice Through the Looking Glass (PG) Duration: 1 Hour 48 Minutes									
CHARACTERS	Minnie Dk 4, Balcony	Woody Lobby Atrium (V)	Pluto Dk 4, Balcony		Goofy Dk 4, Balcony		Pluto Dk 4, Balcony										Peter Pan Preludes			Stitch Dk 4, Balcony					
FUN FOR ALL AGES	D Lounge			Jessie Lobby Atrium (V)		Woody Lobby Atrium (V)		Jessie Lobby Atrium (V)												Cpt. Hook Preludes					
			Crafts: 3D Crafts La Piazza		D Lounge		Disney Trivia La Piazza		Bingo Pre Sales		Senses Spa BINGO D Lounge				Deck Stage				The Tube (Limited Availability)						
	Interdenominational Service Outlook (Guest Led)					Walking Ship Tour Preludes		ESPN Dream Team Draft Day - Baseball O'Gills Pub		Crafts: Animal Masks La Piazza							Disney Vacation Club Group Preview D Lounge		Toddler Time Outlook						
ADULTS	Friends of Bill W. Outlook		Crafts: Tile Coasters O'Gills Pub			Pub Quiz O'Gills Pub		Art of The Theme Show Tour Meridian			Port Shopping Talk Buena Vista Theatre			1820 Society: Lunch Cabanas		Cruisin' Solo Lunch Royal Court		Crafts: Origami Creations O'Gills Pub							
	Boot Camp (Nom. Fee) Senses Fitness Center															TV Tunes Trivia O'Gills Pub									
VIBE 14-17 YEARS OLD	Youth Activities Open House					Open for Teens		Coffee Break		Disney Scene It								Zombified							
EDGE 11-14 YEARS OLD	Youth Activities Open House					GAGA Ball					Disney Animation: Creating a Character								Guesstures			Marshmallow Olympics			
OCEANEER LAB 3-12 YEARS OLD	Stitch's Adventure Squad					Super Sloppy Science										Lunch					Magic PlayFloor				
																					Mickey's Puzzle Playtime				
OCEANEER CLUB 3-12 YEARS OLD	Pre-School Fun (3-5 Years Old)										Aloha Luau														
	Little Einstein's Adventure					Magic Show																			
Afternoon	1:45	2:00	2:15	2:30	2:45	3:00	3:15	3:30	3:45	4:00	4:15	4:30	4:45	5:00	5:15	5:30	5:45	6:00	6:15	6:30	6:45				
FUNNEL VISION	Big Hero 6 (PG) Open Captioning Funnel Vision										Brother Bear (G) Funnel Vision														
BUENA VISTA THEATRE	The BFG (PG) Duration: 1 Hour 55 Minutes										Pete's Dragon (PG) Duration: 1 Hour 42 Minutes														
CHARACTERS		Donald Dk 4, Balcony					Pluto Dk 4, Balcony		Chip & Dale Dk 4, Balcony		Minnie Dk 4, Balcony		Mickey Mouse Dk 4, Balcony		Minnie Preludes										
FUN FOR ALL AGES	Peter Pan Preludes			Stitch Dk 4, Balcony				Minnie Preludes		Donald Preludes		Daisy Preludes		Goofy Preludes											
	Walt Disney Theatre					Lobby Atrium (12+)		Ice Breakers The Tube		Bingo Pre Sales		D Lounge		Captain's Welcome Reception Lobby Atrium			Walt Disney Theatre								
	Crafts: Origami Creations La Piazza			Disney Tunes Trivia La Piazza						Family Crafts La Piazza			Live Music with The Royal Duo Lobby Atrium												
ADULTS	Movie Quotes Trivia O'Gills Pub		D Lounge - Lobster Ravioli			ESPN Dream Team Draft Day - Baseball O'Gills Pub		1820 Society: Mini Golf Goofy Golf		Ultimate Disney Trivia O'Gills Pub				Live Guitar with Selkie O'Gills Pub											
												Footprint Analysis Senses Spa & Salon													
VIBE 14-17 YEARS OLD	Zombified		Dive into DJ'ing				Scavenger Hunt						ESPN Dream Team Draft Day - Football		Foosball Tournament		Brain Teasers								
EDGE 11-14 YEARS OLD	Craft Corner		Brains and Brawns							Anyone Can Cook		Sports Deck Fun			Youth Activities Open House										
OCEANEER LAB 3-12 YEARS OLD	Anyone Can Cook				Get the Hook								Dinner				Pathfinders								
									Four Square								Disney Animation: Creating a Character								
OCEANEER CLUB 3-12 YEARS OLD	Cruisin' with Crush				Tinker Bell's Talent Show				Heffalump Expodishun																
					Scavenger Hunt																				
Evening	7:00	7:15	7:30	7:45	8:00	8:15	8:30	8:45	9:00	9:15	9:30	9:45	10:00	10:15	10:30	10:45	11:00	11:15	11:30	11:45	12:00				
FUNNEL VISION	Tomorrowland (PG) Open Captioning Funnel Vision										Avengers: Age of Ultron (PG-13) Open Captioning Funnel Vision														
BUENA VISTA THEATRE	Pete's Dragon (PG) Duration: 1 Hour 42 Minutes										Captain America: Civil War (PG-13) DOLBY 3D Duration: 2 Hours 27 Minutes														
CHARACTERS		Chip & Dale Preludes		Minnie Preludes							Daisy Preludes		Donald Preludes		Goofy Preludes										
FUN FOR ALL AGES			Mickey Mouse Dk 4, Balcony		Daisy Preludes						Minnie Dk 4, Balcony		Mickey Dk 4, Balcony												
	Captain's Welcome Reception Lobby Atrium			Walt Disney Theatre			Formal Night After Party D Lounge			D Lounge															
	So You Think You Know Your Family? D Lounge			Family Dance Party The Tube			Walt Disney Theatre			Live Music with Summer Breeze Lobby Atrium			Live Music with Summer Breeze Lobby Atrium												
ADULTS	50's and 60's Music Trivia O'Gills Pub			Club DJ Akshen The Tube			Variety: Charles Peachcock The Tube			The Quest The Tube			Variety: Charles Peachcock The Tube			Going Underground with Club DJ Akshen The Tube			Selkie LIVE Ooh La La						
	Tribute to Frank Sinatra with Chuck Perry La Piazza			Selkie LIVE Ooh La La			Team Trivia O'Gills Pub																		
VIBE 14-17 YEARS OLD	Youth Activities Open House						Wii Challenge										That's Hilarious					Gender Wars			
EDGE 11-14 YEARS OLD	Open House		Magic Show			Pictionary			Video Game Challenge			Gender Wars					Tween Choice								
OCEANEER LAB 3-12 YEARS OLD	Youth Activities Open House					Lights, Camera, Improv!					Piston Cup Challenge														
						Anyone Can Cook: Cupcakes																			
OCEANEER CLUB 3-12 YEARS OLD	Dress Up Fun					Magic PlayFloor					Pluto's Pajama Party														
	Once Upon a Time																Cartoon Time								

Symbol for activities that will be repeated during the cruise



FOLD

Fold along the dotted lines and take me with you so you don't miss any of the fun!

FOLD

YOUTH ACTIVITIES OPEN HOUSE
A non-secured program with activities for families, adults and children of all ages to enjoy together.

SUNDAY, AUGUST 14, 2016 - DAY AT SEA

BUENA VISTA THEATRE

Deck 4 & 5, Midship



Open Captioning

DOLBY 3D

8:30 am Duration: 1 hr 46 mins Rating: PG	12:30 pm Duration: 1 hr 48 mins Rating: PG	3:00 pm Duration: 1 hr 55 mins Rating: PG	5:45 pm & 8:15 pm Duration: 1 hr 42 mins Rating: PG	10:30 pm Duration: 2 hrs 27 mins Rating: PG-13
--	---	--	---	---

Character Appearances

MINNIE MOUSE

Deck 4, Balcony
8:30 am, 4:30 pm & 9:45 pm
Preludes
3:45 pm, 5:45 pm & 7:45 pm

WOODY

Lobby Atrium (V)
8:45 am & 9:45 am

PLUTO

Deck 4, Balcony
9:00 am, 10:00 am & 3:30 pm

JESSIE

Lobby Atrium (V)
9:15 am & 10:15 am

GOOFY

Deck 4, Balcony - 9:30 am
Preludes
5:15 pm & 10:30 pm

PETER PAN

Preludes
12:45 pm & 1:45 pm

CAPTAIN HOOK

Preludes - 1:15 pm

STITCH

Deck 4, Balcony
1:30 pm & 2:30 pm

DONALD DUCK

Deck 4, Balcony - 2:00 pm
Preludes
4:15 pm & 10:00 pm

CHIP & DALE

Deck 4, Balcony - 4:00 pm
Preludes - 7:15 pm

DAISY DUCK

Preludes
4:45 pm, 8:15 pm & 9:30 pm

MICKEY MOUSE

Deck 4, Balcony
5:00 pm, 7:30 pm & 10:15 pm



(H) Hallway - (S) Starboard Side - (P) Port Side - (V) Vestibule

For details of daily Disney character appearances, refer to the character line on your Navigator Grid, or the digital character board in the Lobby Atrium.

IMPORTANT NUMBERS

Fire/Security: 7-3001
Medical Emergency: 7-3000
Health Center: 7-1923

SHIP DIRECTORY

YOUTH ACTIVITIES

DISNEY'S OCEANEER CLUB	DECK 5, MID	9:00 AM - 12:00 AM
DISNEY'S OCEANEER LAB	DECK 5, MID	9:00 AM - 12:00 AM
EDGE	DECK 13, MID	9:00 AM - 1:00 AM
VIBE	DECK 4, FWD	9:00 AM - 2:00 AM
IT'S A SMALL WORLD NURSERY	DECK 5, MID	9:00 AM - 11:30 PM

POOLS & MORE

* Children under 12 must have adult supervision in pool areas.

AQUADUCK	DECK 12, MID	9:00 AM - 10:00 PM
AQUALAB	DECK 12, AFT	9:00 AM - 6:00 PM
DONALD'S POOL	DECK 11, MID	9:00 AM - 10:00 PM
MICKEY'S POOL	DECK 11, MID	9:00 AM - 10:00 PM
MICKEY'S SLIDE	DECK 11, MID	9:00 AM - 6:00 PM
NEMO'S REEF	DECK 11, MID	9:00 AM - 6:00 PM
QUIET COVE POOL (18+)	DECK 11, FWD	8:00 AM - 11:00 PM
SATELLITE FALLS (18+)	DECK 13, FWD	6:00 AM - 8:00 PM

Please note, "selfie sticks" are not permitted in the pools or on the slides.

Complimentary pool vests are available for children to use in the pools onboard.
They are located on the pool deck.

RECREATION

GOLF/SPORTS SIMULATORS	DECK 13, AFT	9:00 AM - 6:00 PM
GOOFY GOLF	DECK 13, AFT	8:00 AM - 10:00 PM
GOOFY'S SPORTS DECK	DECK 13, AFT	8:00 AM - 6:00 PM
MIDSHIP DETECTIVE AGENCY	DECKS 2 & 5, MID	9:00 AM - 10:00 PM
PORT ADVENTURES DESK	DECK 5, MID	9:00 AM - 5:00 PM 7:00 PM - 8:30 PM
SENSES FITNESS CENTER (18+)	DECK 11, FWD	6:00 AM - 10:00 PM

GENERAL INFORMATION

ARR-CADE	DECK 11, AFT	24 HOURS
CONNECT@SEA	DECK 4, MID	9:00 AM - 12:00 PM 1:00 PM - 4:00 PM 7:00 PM - 10:00 PM
DISNEY VACATION CLUB	DECK 4, MID	9:00 AM - 11:00 AM 2:30 PM - 10:00 PM
DISNEY VACATION PLANNING	DECK 4, MID	10:00 AM - 8:30 PM
GUEST SERVICES	DECK 3, MID	24 HOURS
HAIR BRAIDING	DECK 11, MID	9:00 AM - 9:30 PM
MEDICAL HEALTH CENTER	DECK 1, FWD	9:30 AM - 11:00 AM 4:30 PM - 7:00 PM
PORT SHOPPING DESK	DECK 4, MID	7:30 PM - 8:30 PM
PRELUDES	DECK 3, FWD	12:30 PM - 2:30 PM 5:45 PM - 8:45 PM
SENSES SPA AND SALON	DECK 11, FWD	8:00 AM - 10:00 PM
SHUTTERS PHOTO GALLERY	DECK 4, MID	9:30 AM - 12:00 PM 7:30 PM - 11:00 PM
SHUTTERS DIGITAL	DECK 4, MID	9:30 AM - 12:00 PM 7:30 PM - 11:00 PM

SHOPPING

BIBBIDI BOBBIDI BOUTIQUE	DECK 5, MID	9:00 AM - 9:00 PM
MICKEY'S MAINSAIL	DECK 3, FWD	9:30 AM - 11:00 PM
QUACKS	DECK 11, MID	
SEA TREASURES	DECK 3, FWD	9:30 AM - 11:00 PM
VISTA GALLERY	DECK 4, MID	9:45 AM - 10:30 PM
WHITE CAPS	DECK 3, FWD	9:30 AM - 11:00 PM
WHOZITS & WHATZITS	DECK 11, MID	10:00 AM - 4:00 PM 7:00 PM - 10:00 PM

DINNER MENU

Animator's Palate : Pacific Rim Cuisine
Enchanted Garden : Continental Market Cuisine
Royal Court : French Cuisine

Dining Times: 5:45pm & 8:15pm

DRINK OF THE DAY

Bahama Mama (Alcoholic)
Coco Bali (Non Alcoholic)

WEATHER FORECAST

Today: Sunny High: 84°F/29°C
Tomorrow: Sunny High: 82°F/28°C

Evening Attire: Formal

DINING & LOUNGES

BREAKFAST

CABANAS CONTINENTAL	DECK 11, AFT	7:00 AM - 7:30 AM
CABANAS	DECK 11, AFT	7:30 AM - 11:30 AM
ROYAL COURT	DECK 3, MID	8:30 AM - 10:00 AM

LUNCH

CABANAS	DECK 11, AFT	11:45 AM - 2:00 PM
FILLMORE'S FAVORITES	DECK 11, MID	11:00 AM - 6:30 PM
LUIGI'S PIZZA	DECK 11, MID	11:00 AM - 6:30 PM
PALO BRUNCH (18+) (RESERVATIONS REQ. & NOM. FEE APPLIES)	DECK 12, AFT	10:00 AM - 12:30 PM
ROYAL COURT	DECK 3, MID	12:00 PM - 1:30 PM
TOW MATER'S GRILL	DECK 11, MID	11:00 AM - 11:00 PM

DINNER

ANIMATOR'S PALATE	DECK 3, AFT	5:45 PM & 8:15 PM
ENCHANTED GARDEN	DECK 2, MID	5:45 PM & 8:15 PM
ROYAL COURT	DECK 3, MID	5:45 PM & 8:15 PM
CABANAS TABLE SERVICE	DECK 11, AFT	6:30 PM - 8:30 PM
PALO (18+) (RESERVATIONS REQ. & NOM. FEE APPLIES)	DECK 12, AFT	6:00 PM - 8:30 PM
REMY (18+) (RESERVATIONS REQ. & NOM. FEE APPLIES)	DECK 12, AFT	6:00 PM - 8:30 PM

LATE NIGHT SNACKS

LA PIAZZA (18+)	DECK 4, AFT	10:45 PM - 11:45 PM
LUIGI'S PIZZA	DECK 11, MID	9:30 PM - 12:00 AM

ADDED FEATURES

BEVERAGE STATION	DECK 11, MID	24 HOURS
EYE SCREAM	DECK 11, MID	11:00 AM - 11:00 PM
ROOM SERVICE	DIAL 0	24 HOURS

ENTERTAINMENT - LOUNGES - BARS

Adults must be 21 and older to consume alcoholic beverages.

BON VOYAGE	DECK 3, MID	9:00 AM - 11:00 PM
COVE BAR (18+)	DECK 11, FWD	10:00 AM - 10:30 PM
COVE CAFE (18+)	DECK 11, FWD	6:30 AM - 12:00 AM
CURRENTS (18+)	DECK 13, FWD	10:00 AM - 11:30 PM
D LOUNGE	DECK 4, MID	SHOWTIMES
FROZONE TREATS	DECK 11, MID	10:00 AM - 6:00 PM
LA PIAZZA (18+ AFTER 9:00 P.M.)	DECK 4, AFT	12:00 PM - 12:00 AM
MERIDIAN (18+)	DECK 12, AFT	10:00 AM - 12:00 AM
O'GILLS PUB (18+ AFTER 9:00 P.M.)	DECK 4, AFT	12:00 PM - 12:00 AM
OOH LA LA (18+)	DECK 4, AFT	5:30 PM - 12:00 AM
OUTLOOK	DECK 14, MID	
SKYLINE (18+)	DECK 4, AFT	5:30 PM - 12:30 AM
THE TUBE (18+ AFTER 9:00 P.M.)	DECK 4, AFT	7:00 PM - 8:30 PM 9:30 PM - 2:00 AM
VISTA CAFE	DECK 4, MID	7:00 AM - 11:00 PM
WAVES	DECK 12, AFT	10:00 AM - 6:00 PM

Public Health Advisory: Consuming raw or under-cooked meats, poultry, seafood, shellfish, or eggs may increase your risk for food borne illness, especially if you have certain medical condition.

GOOFY'S SPORTS

Digital Simulators

Sports Simulator

(Basketball, Baseball, Hockey, Football or Soccer) \$13 / half hr, \$22 / hr

Golf Simulator

\$28 / half hr, \$49 / hr

Reservations can be made at the Port Adventures Desk, Deck 5, Midship or at the Simulators, Deck 13, Aft.