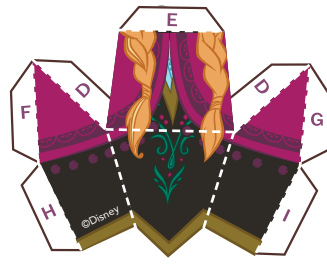
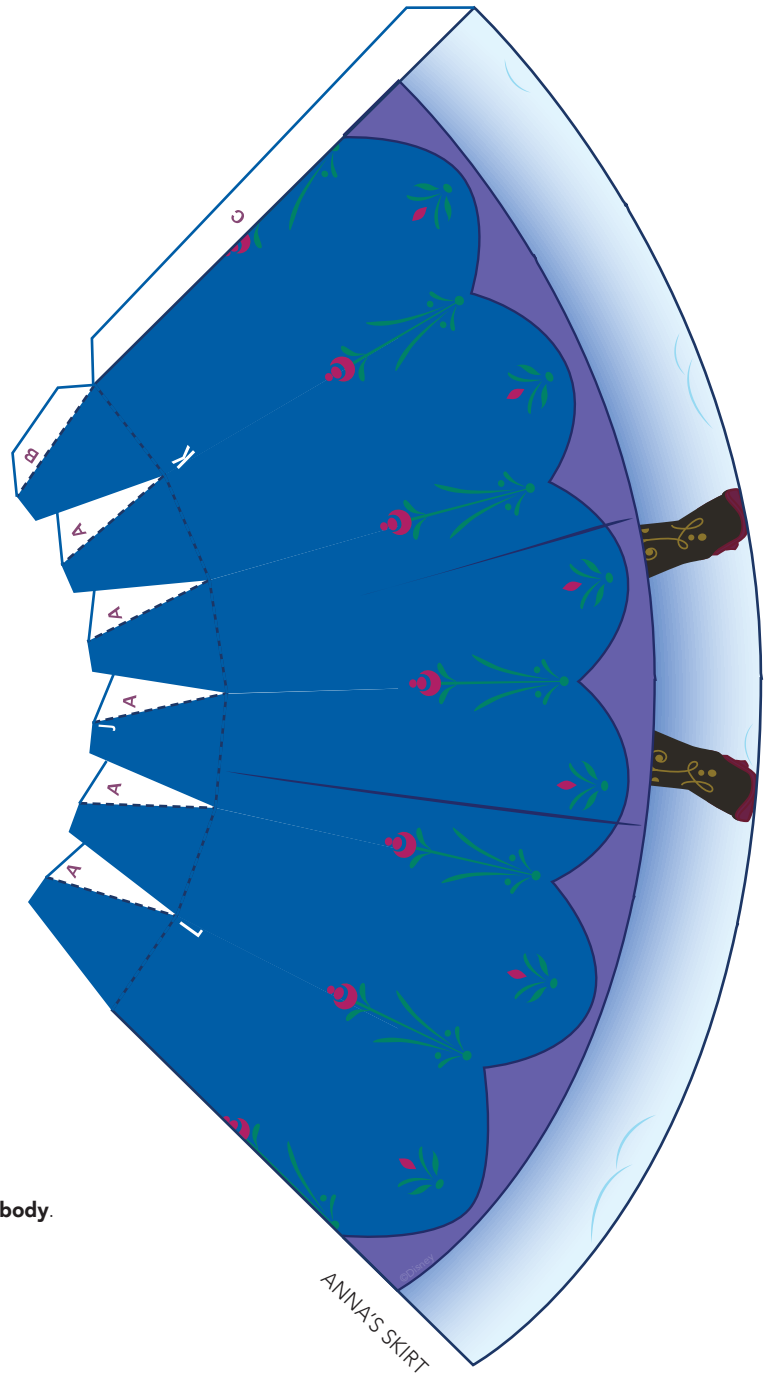


ANNA'S HEAD



ANNA'S BODY



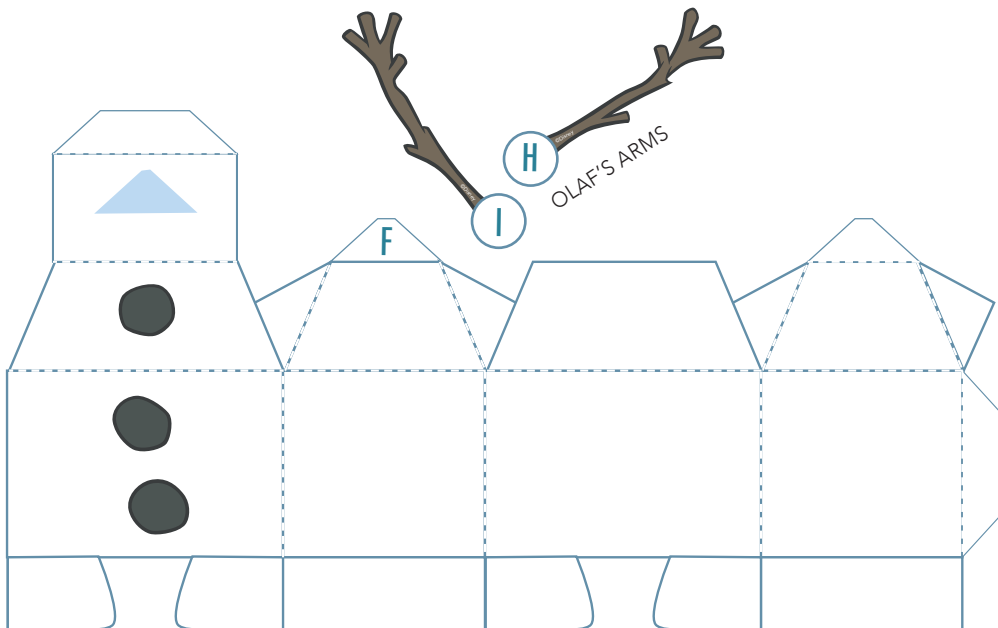
ANNA'S SKIRT

## ANNA

1. Using safety scissors, cut out **Anna's head, body and skirt.**
2. Glue or tape tabs **A through C** in alphabetical order to form **Anna's skirt.**
3. Glue or tape tabs **D** to form **Anna's body.**
4. Glue or tape tabs **E through I** on **Anna's body** in alphabetical order to **Anna's head** where marked.
5. Glue or tape the front and back point of **Anna's body** to **Anna's skirt** so front point covers the spot marked **K.**
6. Glue or tape spots marked **L and K** on **Anna's head** to **Anna's skirt.**

## OLAF

1. Using safety scissors, cut out **Olaf's head, body and arms.**
2. Glue or tape tabs **A through E** inside to form **Olaf's body.**
3. Glue or tape three tabs marked **F** inside to finish **Olaf's body.**
4. Fold tab **G** back on **Olaf's head** and glue to spot marked on **Olaf's body.**
5. Fold tabs **H and I** on **Olaf's arms** back and glue to spots marked on **Olaf's body.**



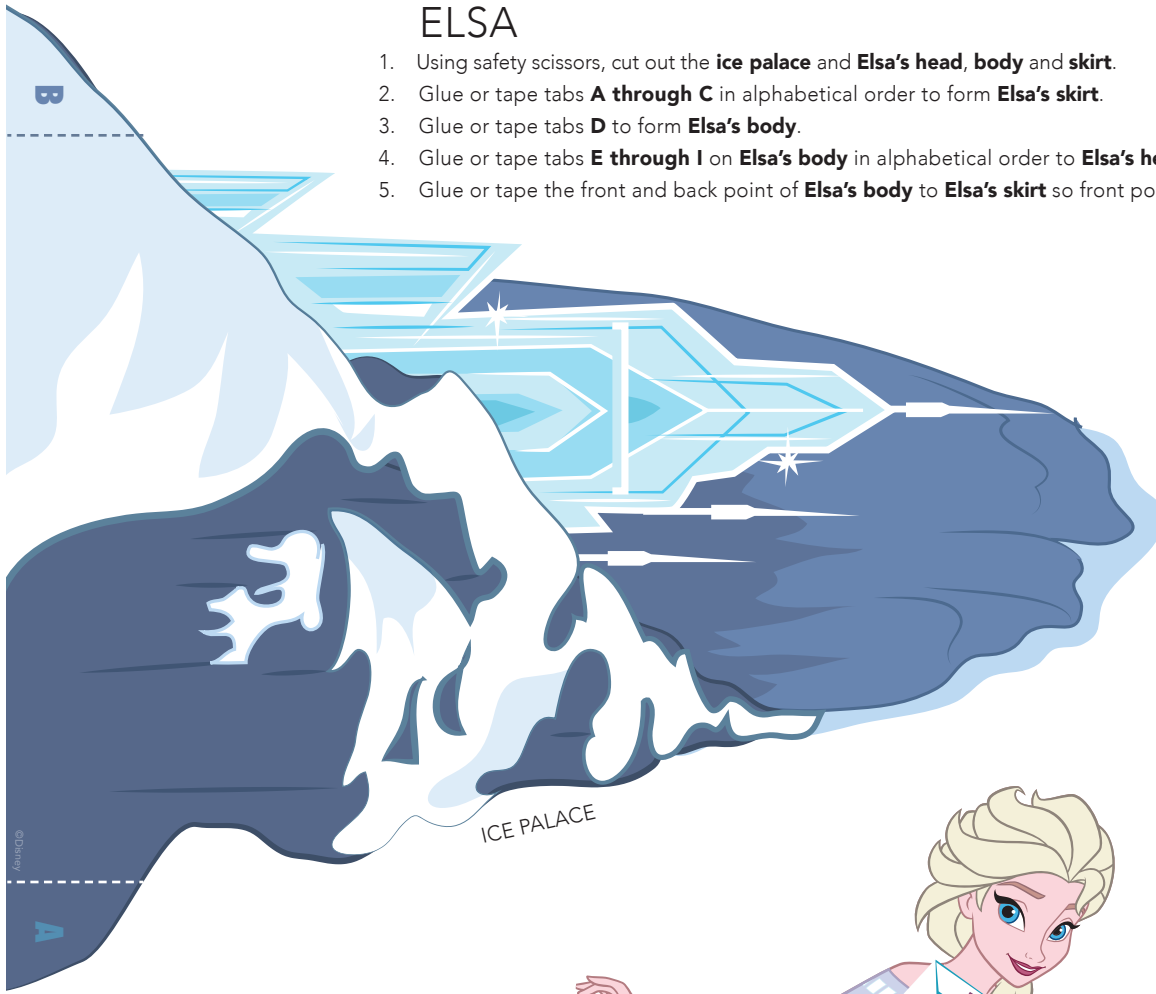
OLAF'S BODY



OLAF'S HEAD

# ELSA

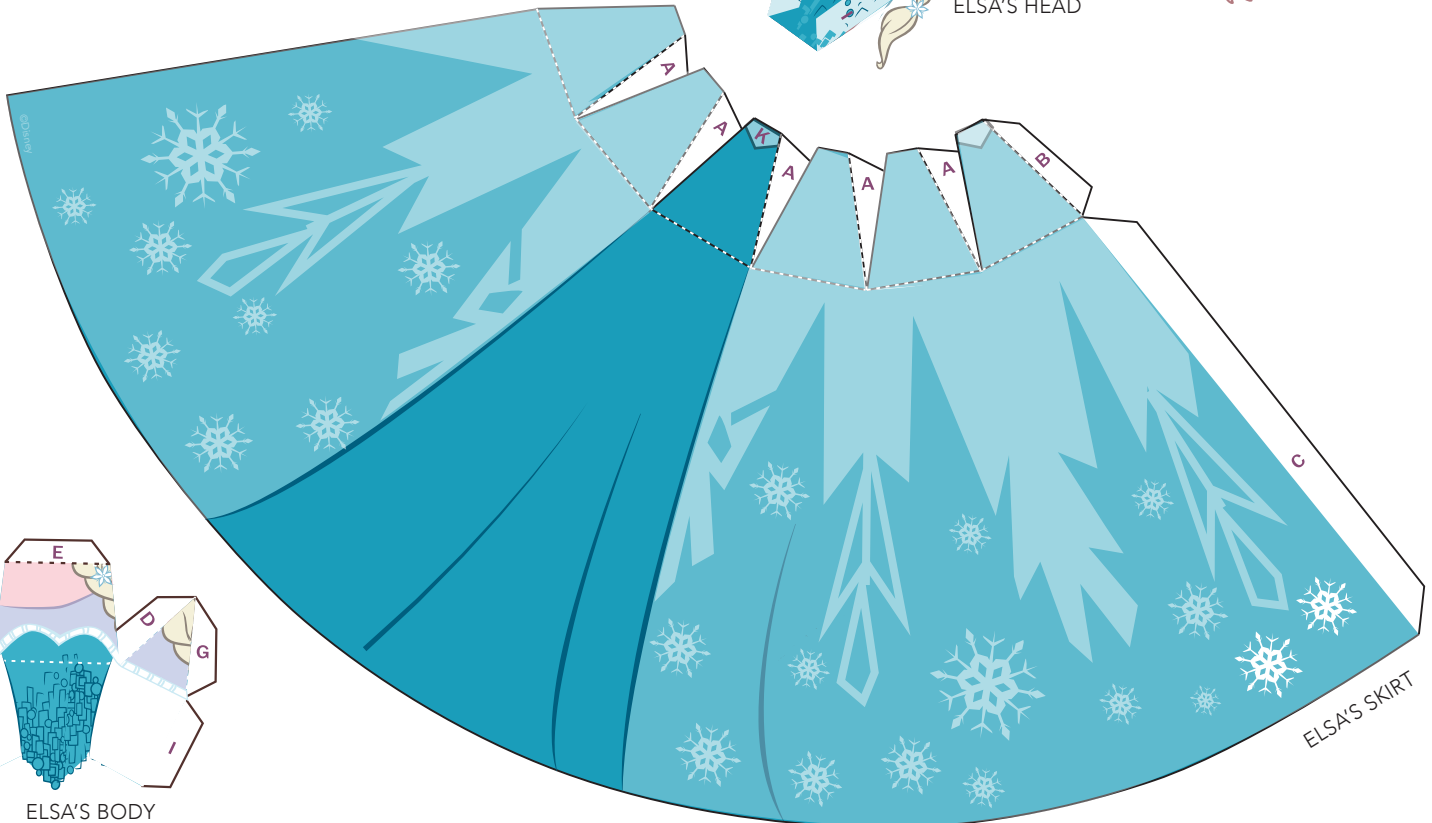
1. Using safety scissors, cut out the **ice palace** and **Elsa's head, body** and **skirt**.
2. Glue or tape tabs **A through C** in alphabetical order to form **Elsa's skirt**.
3. Glue or tape tabs **D** to form **Elsa's body**.
4. Glue or tape tabs **E through I** on **Elsa's body** in alphabetical order to **Elsa's head** where marked.
5. Glue or tape the front and back point of **Elsa's body** to **Elsa's skirt** so front point covers the spot marked **K**.



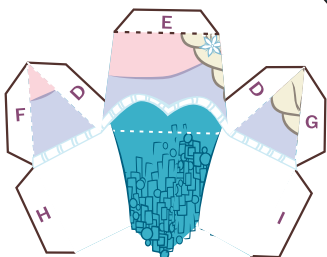
ICE PALACE



ELSA'S HEAD



ELSA'S SKIRT



ELSA'S BODY



## BACKDROP

1. Using safety scissors, cut out the **backdrop**.
2. Fold **backdrop** on dotted line.
3. Glue or tape tabs **A** and **B** on **ice palace** to **backdrop**.

BACKDROP