

# PERSONAL NAVIGATOR

THURSDAY, AUGUST 11, 2016

Sunrise 6:35 am Sunset: 7:27 pm  
Evening Attire: Optional Dress Up

Today: Sunny High: 80°F/27°C  
Tomorrow: Sunny High: 84°F/29°C

DAY AT SEA

## Disney's Believe

Genie from Aladdin and many of Disney's most beloved magic makers take a father on a magical journey to show him that anything is possible if you just believe.

WALT DISNEY THEATRE  
Deck 3 & 4, Forward  
6:15 pm & 8:30 pm

As a courtesy to all Guests, we kindly advise that the saving of seats is **not** permitted in the Walt Disney Theatre.

Assistance available at the entrance to the Walt Disney Theatre 30 minutes prior to show time.

## Disney FANTASY Fun Facts

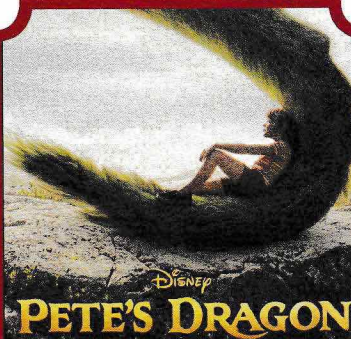
While the cute baby elephant, Dumbo serves as a fantastic stern character, in real life he would have to gather 24,266 other adult male African elephants to match the weight of the Disney Fantasy.

A "light point" is shipbuilders' lingo for anything that's a light. There are approximately 80,000 light points on the Disney Fantasy – "double the normal number for a ship this size," according to Meyer Werft, the shipyard in Germany where the Disney Fantasy was built. The large number is the result of Disney's flair for theatrical experiences – accomplished primarily with LEDs and other "environmentally friendly" lighting.

Looking upward in the ship's Lobby Atrium brings Guest's eye-to-crystal with a glowing piece of "Art Nouveau-inspired jewelry" – a cascading chandelier flowing downward from a massive stained-glass flourish on the ceiling in peacock hues of greens and blues. The chandelier itself is more than 10 feet in diameter, a one-of-a-kind work of art evoking a peacock in stained glass and more than 60,000 clear Swarovski crystal beads.

### Debark Talk Broadcast

Important information regarding disembarkation procedures for your journey home will be covered in this debarkation briefing. The broadcast will be shown continuously on channel 5 from 12:00 pm today on your stateroom television for your convenience.



**PETE'S DRAGON**

**MOVIE PREMIERE**  
1 Hour 42 Minutes (PG)

Walt Disney Theatre,  
Deck 3 & 4, Forward  
DOLBY 3D

Buena Vista Theatre,  
Deck 4 & 5, Midship  
2D Version  
12:01 am  
(Doors Open at 11:30 pm)

## Don't Miss:

### Good Morning Disney Fantasy

Channel 5 - Repeated from 5:00 am - 12:00 pm  
Tune in to channel 5 as your Cruise Director highlights the upcoming events and activities for the day.

### Captain's Signing

White Caps, Deck 3, Forward - 12:15 pm  
Meet the Master of the Disney Fantasy and have your cruise memories signed.

### Towel Folding

The Tube, Deck 4, Aft - 2:15 pm  
Learn to create those amazing towel creatures you've seen in your stateroom all cruise long.

### Magic Workshop (6+)

The Tube, Deck 4, Aft - 3:00 pm & 7:30 pm  
Magic Dave teaches you the basics of magic in this fun family event.

### Variety Show: Magic Dave (18+)

The Tube, Deck 4, Aft - 9:45 pm & 10:45 pm  
Featuring the Magic & Comedy of Magic Dave, as he entertains you in this adult exclusive show.

## PORT ADVENTURES

Disney's private island Castaway Cay not only offers a terrific family beach day, but many other excursions and rentals to compliment. Snorkeling, bike and float rentals, parasailing plus much more, means that there is something for everyone at Disney Castaway Cay. To make your reservation, visit the Port Adventures Desk, Deck 5, Midship.

## DINNER MENU

Animator's Palate : Captains Gala  
Enchanted Garden : Captains Gala  
Royal Court : Captains Gala

## DRINK OF THE DAY

High Tide (Alcoholic)  
Passion Cream Freeze (Non-Alcoholic)

## IMPORTANT NUMBERS

Fire/Security: 7-3001  
Medical Emergency: 7-3000  
Health Center: 7-1923



# ADULT ACTIVITY HIGHLIGHTS

## SENSES SPA FITNESS CLASSES & SEMINARS

*Yoga* - Donald's Pool - 7:00 am  
*Tab Abs* - Senses Spa & Salon - 7:45 am  
*Body Sculpt Boot Camp* (Nom. Fee) - Senses Fitness Center - 8:30 am  
*Introduction to Acupuncture* - Senses Spa & Salon - 9:30 am  
*Secrets to a Flatter Stomach* - Senses Spa & Salon - 10:30 am  
*How to Look Ten Years Younger Today* - Senses Spa & Salon - 11:30 am  
*Acupuncture Pain Relief* - Senses Spa & Salon - 1:30 pm  
*Good Feet Seminar: Walking In Comfort* - Senses Fitness Center - 2:00 pm  
*Detox for Health & Weight Loss* - Senses Spa & Salon - 2:30 pm  
*Tighten, Lift and Contour with Thermage* - Senses Spa & Salon - 3:15 pm  
*Acupuncture: Stress, Insomnia and Depression* - Senses Spa & Salon - 4:00 pm  
*Tour De Cycle* (Sign-Up Required) - Senses Fitness Center - 4:00 pm  
*Complimentary Footprint Analysis* - Senses Spa & Salon - 5:00 pm  
*Total Body Conditioning* - Senses Spa & Salon - 6:00 pm

## TASTING CLASSES

*Chocolate & Liquor Tasting* (21+) - Ooh La La - 12:15 pm  
*Rum Tasting* (21+) - Meridian - 1:00 pm  
*Stem to Stern Wine Tasting* (21+) - Ooh La La - 1:45 pm  
*Mixology* (21+) - Skyline - 2:00 pm  
*Martini Tasting* (21+) - Meridian - 3:00 pm  
*Amari Tasting* (21+) - La Piazza - 4:15 pm  
*Tequila & Margarita Tasting* (21+) - Ooh La La - 4:30 pm  
 Please make reservations for tastings at Guest Services for a nominal fee.  
 Tasting Seminars are only for Guests 21 and older.

## 1820 SOCIETY: LUNCH

*Cabanas, Deck 11, Aft - 12:00 pm*  
 Get to know your fellow Society members over lunch.

## 1820 SOCIETY: 2000'S MUSIC CHALLENGE

*O'Gills Pub, Deck 4, Aft - 5:00 pm*  
 Join your Cruise Staff as we navigate our way through the music of the 2000's.

## 1820 SOCIETY: DODGEBALL CHALLENGE

*Frozone Treats, Deck 11, Midship - 10:00 pm*  
 Society members, Guests who are 18 - 20 years old, unite as a team to throw, dodge and duck!

## ESPN DREAM TEAM DRAFT DAY - FOOTBALL

*O'Gills Pub, Deck 4, Aft - 11:15 am*  
 Join the "Commissioner" and engage in this interactive fantasy football draft unlike anything you've ever seen! Can YOU draft the greatest football team of all-time?

## TRIBUTE TO ELTON JOHN WITH CHUCK PERRY

*La Piazza, Deck 4, Aft - 7:30 pm*  
 Join Chuck Perry as he plays live for your listening pleasure.

## 90'S MUSIC TRIVIA

*O'Gills Pub, Deck 4, Aft - 7:30 pm*  
 "If you Wannabe" the winner, then join us as we test your 90's music knowledge.

## ICE BREAKERS

*The Tube, Deck 4, Aft - 10:15 pm*  
 Join you Club Host for a night full of unpredictable fun.



# FUN FOR ALL AGES HIGHLIGHTS

## FAMILY MOVIE FUN TIME: FINDING DORY - (PG)

*Buena Vista Theatre, Deck 4 & 5, Midship - 8:30 am*  
 Come join us for a special opportunity to enjoy Finding Dory in the Buena Vista Theatre. We will leave some lights on and turn the volume down as audience members are welcome to talk, leave their seats, move about and (most importantly) have fun!

## JAKE & THE NEVERLAND PIRATES

*D Lounge, Deck 4, Midship - 9:15 am*  
 A'Hoy there mates, join us for an adventure in D Lounge with Jake and the Neverland Pirates.

## DISNEY ANIMATION: STAGING A SCENE

*D Lounge, Deck 4, Midship - 10:00 am*  
 Go behind the scenes at Walt Disney Animation Studios and learn how basic poses, silhouette, and placement (long shot, medium shot, close-up) enhance animation storytelling. Then, participate in a drawing exercise where you make the choices to communicate a story in this fun and fascinating enrichment program.

## \$10,000 MEGA JACKPOT BINGO

*Bingo Pre-Sales start at 11:00 am*  
*D Lounge, Deck 4, Midship - 11:15 am*  
 It's Big, it's Massive, it's Supersized! It's \$10,000 MEGA Jackpot Bingo! Take home \$10,000 if you can cover your card in 46 numbers or less. If not, we carry on to play for the biggest cash prize of the session. Pre-Sales start 30 minutes prior to game.

## DISNEY VACATION CLUB GROUP PREVIEW

*D Lounge, Deck 4, Midship - 12:30 pm & 4:15 pm*  
 Want to learn more about taking magical vacations year after year? Please see a Disney Vacation Club representative on Deck 4, Midship, or call 7-2805 from your stateroom phone for more information about our interactive group presentation.

## ANYONE CAN COOK: APPLE STRUDEL

*D Lounge, Deck 4, Midship - 1:45 pm*  
 From our galley to yours. Join our chefs as they show you how to prepare delicious dishes. Today's Menu - Apple Strudel.

## DISNEY JUNIOR PIRATE & PRINCESS DANCE PARTY

*D Lounge, Deck 4, Midship - 3:15 pm*  
 Calling all Pirates and Princesses! Come join us for a family dance party featuring music and fun activities from Jake & the Neverland Pirates and Sofia the First. Whether you favor tiaras or treasure chests, there's something for you at our Disney Junior Pirate & Princess Dance Party. Sofia and Jake will be there, come join them for the fun!

## FINAL JACKPOT BINGO

*Bingo Pre-Sales start at 3:45 pm*  
*Buena Vista Theatre, Deck 4 & 5, Midship - 4:15 pm*  
 The snowball jackpot MUST BE WON at this final session! Beat the line and get your cards early. Who will be the lucky winner? It could be you! Pre-Sales start 30 minutes prior to game.

## MIRROR MIRROR

*D Lounge, Deck 4, Midship - 7:30 pm & 9:45 pm*  
 Head to D Lounge for the fairest game show of them all, Mirror Mirror. Featuring the Magic Mirror and everyone's favorite dwarf, Dopey.

## CLUB NEW YEAR'S EVE

*D Lounge, Deck 4, Midship - 10:15 pm*  
 Club New Year's Eve, you won't want to miss this journey of musical genres in history and performances by some of your favorite Cruise Staff. Bring your family and help us count down to a brand new year!





# YOUTH ACTIVITIES HIGHLIGHTS

## DINE & PLAY

A convenience for families dining at 8:15 pm, our Youth Activities counselors will be available at 9:15 pm at the entrance of Royal Court, Enchanted Garden and Animator's Palate dining rooms to bring registered children to join the fun in the Youth Activity areas.



Deck 5, Midship (7-1440)  
(3-12 years old)

9:00 am - 12:00 am

## MICKEY'S PUZZLE PLAYTIME

11:15 am

Come and play with Mickey & friends as they share their favorite games, puzzles and dances!

## TINKER BELL'S TALENT SHOW

7:30 pm

Tinker Bell has come from Pixie Hollow to Disney Cruise Line to help young cruisers discover their fairy talents.



Deck 5, Midship (7-1445)  
(3-12 years old)

9:00 am - 12:00 am

## GET THE HOOK

3:00 pm

A villainous villain has stolen Captain Hook's prized golden hook. Become a member of the Top Deck Detective Agency and help solve the clues to retrieve Hook's hook.

## MONSTER'S INC: OPEN "MIKE" NIGHT

10:00 pm

The Monsters of Monstropolis have all lost their voices and it's up to YOU to save the day. Participate in Mike Wazowski's Comedy School and a special show to help collect enough laughs to power up the city.



Deck 13, Midship (7-9743)  
(11-14 years old)

9:00 am - 1:00 am

## BRAINS AND BRAWNS

4:30 pm

You will compete against each other to solve clues, take part in physical challenges, and reach the finish first.

## THAT'S HILARIOUS

7:30 pm

Ever wanted to show off your comedy skills? Then be a part of the cast for the crazy improv show "That's Hilarious" and put on a live show for your friends.



Entrance on Deck 4, Forward (7-9418)  
(14-17 years old)

10:00 am - 2:00 am

## DREAM NOW! SEA HOW! - THEATRICAL

3:30 pm

Imagine a job where You are the person who brings to life the characters and their stories that have been imagined, dreamed and created. This is where you will meet one of the current Disney performers and will go behind the scenes and experience the magic that is created.

## MIX AND MATCH

10:45 pm

Try to find your "perfect match" in Disney's very own "Dating" game.

# BUENA VISTA THEATRE

Deck 4 & 5, Midship  
Today's Movies



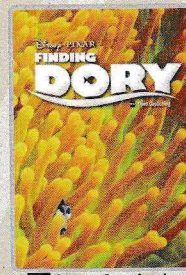
FAMILY MOVIE FUN TIME

8:30 am  
Duration:  
1 hr 45 mins  
Rating: PG



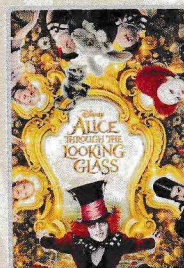
DOLBY 3D

10:45 am  
Duration:  
1 hr 46 mins  
Rating: PG

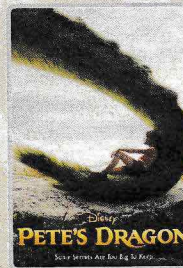


Open Captioning

1:00 pm  
Duration:  
1 hr 45 mins  
Rating: PG



5:30 pm & 8:15 pm  
Duration:  
1 hr 48 mins  
Rating: PG



12:01 am  
Duration:  
1 hr 42 mins  
Rating: PG



## FAMILY VARIETY ACT

Featuring the  
Ventriloquism & Comedy  
of Lynn Trefzger,  
as she entertains the  
entire family in this  
fun-filled show.

Walt Disney Theatre,  
Deck 3, Forward,  
2:00 pm  
(Doors Open 1:30 pm)



## ADULT VARIETY ACT

Featuring the  
Magic & Comedy  
of Magic Dave,  
as he entertains you in this  
adult exclusive show.

The Tube (18+),  
Deck 4, Aft,  
9:45 pm & 10:45 pm

## YOUTH ACTIVITIES OPEN HOUSE

Open House is an opportunity for all to come and participate in a variety of exciting activities and free time in the Oceaneer Lab, it's a small world nursery, Vibe and Edge throughout the cruise. During these times secured programming will still be offered in the other venue for those looking to check their children into care.

Disney's Oceaneer Club: 9:00 am - 11:00 am

Disney's Oceaneer Lab: 4:00 pm - 5:30 pm

Edge: 9:00 am - 10:00 am & 6:00 pm - 7:30 pm

Vibe: 10:00 am - 11:00 am & 7:30 pm - 9:00 pm



# MORE TO ENJOY WHILE ONBOARD



The puppies from 101 Dalmatians have gone missing! Use your special detective "badge" to track down the puppies and catch the villain who took them.

**Deck 2 & 5, Midship,**  
9:00 am - 10:00 pm



## NEW FALL 2017 ITINERARIES

Set sail in fall 2017 and discover exciting new destinations on sailings departing from New York, Texas, California, and Port Canaveral! Visit the Disney Vacation Planning Desk, Deck 4, Midship for more information. Disney Vacation Planning tends to get busy on the last day of sailing. Don't miss the opportunity to plan your next Disney vacation.

## DISNEY VACATION CLUB® GROUP PREVIEW

Want to learn more about taking magical vacations year after year? Please see a Disney Vacation Club representative on Deck 4, Midship, or call 7-2805 from your stateroom phone for more information about our interactive group presentation.

## FREE ON DEMAND TV

Watch Disney movies, Hollywood features, ABC shows, and even captioned content, plus much more "On Demand" for FREE in the comfort of your stateroom! Bookmark your movie and come back to watch it later. Press MENU on your stateroom television remote control and follow the prompts.

## ARR-CADE

Where can you be a ninja, play the guitar like a rock star, race a car down the streets of Tokyo and along the way WIN some great prizes? Arr-CADE located Deck 11, Aft where the pirates play.

## Connect@Sea

We are now offering a NEW and improved Internet service to stay connected on your cruise like no other in the industry! Internet packages range from \$0.25 per MB - \$89.00 (1000 MB package). For more information contact your Connect@Sea Expert or Guest Services onboard.

Disney Cruise Line

## PORT ADVENTURES

Disney's private island Castaway Cay not only offers a terrific family beach day, but many other excursions and rentals to compliment. Snorkeling, bike and float rentals, parasailing plus much more, means that there is something for everyone at Disney Castaway Cay.

Visit the **Port Adventures Desk, Deck 5, Midship,** for more information.

## SHOPPING

### COMMODORE'S SIGNING

Don't miss your chance to meet the Master of the Disney Fantasy Cruise Ship! Stop by White Caps today at 12:15 pm where you can have your cruise mementos signed by our Commodore. Deck 3, Forward.

### OFFICER PIN TRADING

Come and trade pins with the Officers of the Disney Fantasy Cruise Ship at 7:30 pm in the Lobby Atrium, Deck 3, Midship.

### BIBBIDI BOBBIDI BOUTIQUE

A makeover fit for a princess! Fairy Godmothers-in-Training are ready with magic and pixie dust to give your Prince and Princess the transformation of a lifetime. Make your reservations by visiting Bibbidi Bobbidi Boutique, Deck 5, Midship or dialing extension 7-9438. Limited space available.

### THE DISNEY PARKS COLLECTION BY PANDORA JEWELRY

The Disney Parks Collection by PANDORA Jewelry features hand-finished .925 sterling silver and 14K gold charms inspired by some of Disney's most beloved characters. Visit White Caps on Deck 3, Forward, where you'll find a specially designed sterling silver charm featuring a Disney Cruise Line ship.

### SOPHIA FIORI JEWELRY BINGO

Don't miss today's bingo where you'll have the chance to win Sophia Fiori jewelry pieces in prizes! Pre-Sales start 15 minutes prior to game. Please check your Times Grid for time and location.

### ARMANI WATCHES

Find classic designs and ready to wear watches perfect for any time of day from Armani. Visit White Caps, Deck 3, Forward.



## SALON TASTER SPECIAL

- Scalp Massage
- European Facial
- Hand Treatment
- Sunglow Makeover
- Conditioning Hair Treatment
- Eye Collagen Treatment
- Foot & Ankle Massage
- Neck & Shoulder Massage

Three for \$99.00

Five for \$119.00

All Eight for \$139.00

**Senses Spa & Salon, Deck 11, Forward, Extension 7-1465**

Commemorate your Disney cruise with a wide selection of 2016 Disney Cruise Line merchandise. From casual apparel to drinkware and more, you are sure to find a special souvenir for the whole family!



**MICKEY'S MAINSAIL**  
**DECK 3, FORWARD**



## PROFESSIONAL PORTRAITS TONIGHT

Tonight is your last chance for professional portraits! Capture the magic of your vacation at one of our portrait studios and let the memories live. Visit our professional portrait studios located in the Lobby Atrium, Deck 3, Midship.

5:15 pm - 6:00 pm

7:15 pm - 8:30 pm

9:30 pm - 10:15 pm

*\*Please note that photos are available for viewing on our interactive photo kiosks approximately five hours after being taken and are only available for purchase during this cruise. Photo sizes are preset and cannot be changed.*

DP0229 08-11-2016 ©DISNEY

## IMPORTANT INFORMATION

### Security Notice

All Guests (including children) who wish to disembark the ship are required to present their Key to the World card at the gangway. A photo ID is also required for those Guests who are 18 years of age or older. Guests under the age of 18 are required to have a parent, guardian or other responsible adult sign an authorization form at the Guest Service Desk if they wish to go ashore unaccompanied or with any adult from another stateroom.

### Insect Repellent Advisory

Protect against mosquito bites and related illnesses when going ashore. Insect repellent is available for purchase in White Caps. When using both sunscreen and insect repellent, use sunscreen first and apply insect repellent on top of sunscreen.

### Cold and Flu Reminder

Please wash hands frequently and thoroughly, particularly before meals. Contact the Health Center by dialing 7-1923, should anyone in your party become ill.

### Corridor Quiet Hours

As a courtesy to all our Guests, please recognize quiet hallway hours from 10:00 pm til 8:00 am

### Inclement Weather

For the safety of all Guests, outdoor events may be changed due to unforeseen weather conditions.

### Environmental Message

With Disney's commitment to the Environment, please refrain from throwing anything over the Ship's side. Thank you!

### No Reserved Seats Policy

As a courtesy to all our Guests, we kindly advise that the saving of seats is not permitted in the Walt Disney Theatre, and the saving of the sun loungers is not permitted on Deck 11, 12, and 13. Items left unattended will be returned to lost and found at Guest Services, Deck 3 Midship.

### Smoking

For the comfort of our Guests, the following areas are designated as smoking areas:

\*Deck 13, forward, port side by Currents

\*Deck 12, aft, port side outdoor area that is accessible through the Meridian Lounge

\*Deck 4, aft, port side from 6:00 pm to 6:00 am only (all of Deck 4 is non-smoking from 6:00 am to 6:00 pm)

Smoking is prohibited inside all Guest staterooms and on stateroom verandahs. Guests found smoking in their staterooms or on their verandahs will be charged a \$250 stateroom recovery fee. Electronic cigarettes may only be used in designated smoking areas.











### Walt Disney Theatre





Theatrical performances may use artificial fog, strobe lights, pyrotechnics and other special effects. For the safety of our performers and the comfort of those around you, the use of any photography, video recording device or any electronic equipment is prohibited.

### Verandah Safety

Please do not leave any combustible materials on your balcony when not present in your stateroom for safety reasons.



Morning	8:30	8:45	9:00	9:15	9:30	9:45	10:00	10:15	10:30	10:45	11:00	11:15	11:30	11:45	12:00	12:15	12:30	12:45	1:00	1:15	1:30	
FUNNEL VISION	Dumbo (G) Funnel Vision					Pocahontas (G) Funnel Vision					Poolside Jams with Club DJ Pete Deck 11 Stage											
BUENA VISTA THEATRE	Family Movie Fun Time: Finding Dory (PG) Duration: 1 Hour 45 Minutes										The Jungle Book (2016) (PG)  Duration: 1 Hour 46 Minutes					Finding Dory (PG) - OC Duration: 1 Hour 45 Minutes						
CHARACTERS			Peter Pan Preludes	Minnie Dk 4, Balcony	Doc McStuffins Lobby Atrium (V)	Sofia Dk 4, Balcony	Jake Lobby Atrium (V)	Minnie Dk 4, Balcony	Sofia Dk 4, Balcony													
					Cpt. Hook Preludes		Peter Pan Preludes		Doc McStuffins Lobby Atrium (V)													
FUN FOR ALL AGES		Coloring Time D Lounge								Bingo Pre Sales	\$10,000 Mega Jackpot  D Lounge											
	Crafts: Origami Frogs La Piazza				Disney Trivia La Piazza		Toddler Time Outlook		Crafts: Memory Pages La Piazza				Captain's Signing White Caps									
	Friends of Bill W. Outlook				Crafts: 3D Crafts O'Gills Pub				TV Tunes Trivia O'Gills Pub		ESPN Dream Team Draft Day - Football O'Gills Pub		1820 Society: Lunch Cabanas		Disney Vacation Club Group Preview D Lounge							
ADULTS	Boot Camp (Nom. Fee) Senses Fitness Center												Cruisin' Solo Lunch Royal Court		Animation Class The Tube							
VIBE 14-17 YEARS OLD						Youth Activities Open House 					Dream Now! Sea How! - Theatrical		Foosball Tournament		Teen Choice		Pool Party					
EDGE 11-14 YEARS OLD	Youth Activities Open House 					Tween Choice					Playmation					Newsies: Get Up and Go!		ESPN Dream Team Draft Day - Baseball				
OCEANEER LAB 3-12 YEARS OLD	Pathfinders										Stitch's Adventure Squad					Super Sloppy Science						
OCEANEER CLUB 3-12 YEARS OLD						Piston Cup Challenge										Lunch						
	Youth Activities Open House 					Pre-School Fun (3-5 Years Old)					Little Einstein's Adventure											
	Heffalump Expodishun 					Mickey's Puzzle Playtime																

Afternoon	1:45	2:00	2:15	2:30	2:45	3:00	3:15	3:30	3:45	4:00	4:15	4:30	4:45	5:00	5:15	5:30	5:45	6:00	6:15	6:30	6:45			
FUNNEL VISION	The Princess and the Frog (G) Funnel Vision								The Lion King (G) Funnel Vision								Up (PG) Funnel Vision							
BUENA VISTA THEATRE									Bingo Pre-Sales		Final Jackpot Bingo				Alice Through the Looking Glass (PG) Duration: 1 Hour 48 Minutes									
CHARACTERS					Minnie Dk 4, Balcony						Mickey Dk 4, Balcony						Daisy Dk 4, Balcony				Minnie Dk 4, Balcony		Mickey Dk 4, Balcony	
					Daisy Dk 4, Balcony										Pluto Preludes				Goofy Preludes					
FUN FOR ALL AGES					Disney Tunes Trivia La Piazza				Bingo Pre Sales		Final Jackpot BINGO Buena Vista Theatre				Live Music with Summer Breeze Lobby Atrium									
	Anyone Can Cook Apple Strudel D Lounge		Towel Folding The Tube				Magic Workshop (6+) The Tube		Toddler Time Outlook		Talent Show Rehearsals The Tube		Super Sloppy Science Disney's Oceaneer Lab		Live Music with The Dreamers La Piazza						Walt Disney Theatre			
ADULTS	Know It All Trivia O'Gills Pub				Movie Quotes Trivia O'Gills Pub				Art of The Theme Show Tour Meridian		Disney Vacation Club Group Preview D Lounge		1820 Society: 2000's Music Challenge O'Gills Pub				Total Body Conditioning Senses Spa & Salon							
	Wine Tasting (21+) Ooh La La										Ultimate Disney Trivia O'Gills Pub													
VIBE 14-17 YEARS OLD	Pool Party		Dive into DJ'ing								Dream Now! Sea How! - Theatrical				GAGA Ball		Float Fun Trivia						Video Game Challenge	
EDGE 11-14 YEARS OLD	Around the World in 7 days				Sports Deck Fun								Bingo		Brains and Brawns								Youth Activities Open House	
OCEANEER LAB 3-12 YEARS OLD									Get the Hook						Youth Activities Open House									
			Oceaneer Rangers										Super Sloppy Science											
OCEANEER CLUB 3-12 YEARS OLD									Big Top Fun Fest!						Cruisin' with Crush									
	Magic PlayFloor														Sports Deck Fun									

Evening	7:00	7:15	7:30	7:45	8:00	8:15	8:30	8:45	9:00	9:15	9:30	9:45	10:00	10:15	10:30	10:45	11:00	11:15	11:30	11:45	12:00		
FUNNEL VISION					Toy Story 3 (G) Funnel Vision								Guardians of the Galaxy (PG-13)  Open Captioning Funnel Vision										
BUENA VISTA THEATRE					Alice Through the Looking Glass (PG) Duration: 1 Hour 48 Minutes								Pete's Dragon (PG) Duration: 1H 40M. Movie starts at 12:01 am										
CHARACTERS		Chip & Dale Preludes		Goofy Preludes		Pluto Preludes		Goofy Preludes		Donald Preludes		Daisy Preludes											
		Minnie Dk 4, Balcony		Mickey Dk 4, Balcony						Minnie Dk 4, Balcony		Mickey Dk 4, Balcony		Chip & Dale Dk 4, Balcony									
FUN FOR ALL AGES	Family Dance Party The Tube		Magic Workshop (6+) The Tube				  Walt Disney Theatre				 D Lounge		 D Lounge		 D Lounge		 DOLBY 3D 12:01 am Walt Disney Theatre Doors open at 11:30 pm						
			Mirror Mirror D Lounge																				
	Officer Pin Trading Lobby Atrium								Live Music with Summer Breeze Lobby Atrium		Summer Breeze LIVE Lobby Atrium												
ADULTS	Tribute to Elton John with Chuck Perry La Piazza								Club DJ Pete The Tube		Variety: Magic Dave The Tube		Ice Breakers The Tube		Variety: Magic Dave The Tube		Club DJ Pete The Tube						
	90's Music Trivia O'Gills Pub										Team Trivia O'Gills Pub				Team Trivia La Piazza		Live Music with The Dreamers Ooh La La						
VIBE 14-17 YEARS OLD					Youth Activities Open House				Pump It Up				Gender Wars				Mix and Match						Mirror, Mirror
EDGE 11-14 YEARS OLD	Open House		That's Hilarious		Karaoke		4 Square Competition				Crowning of the Couch Potato				Talent Show				Mirror, Mirror				
OCEANEER LAB 3-12 YEARS OLD	Anyone Can Cook						4 Square Competition				Monster's Inc: Open "Mike" Night												
					Mirror, Mirror																		
OCEANEER CLUB 3-12 YEARS OLD	Tinker Bell's Talent Show								Pluto's Pajama Party														
					Parachute Games								Cartoon Time										

Symbol for activities that will be repeated during the cruise

FOLD

Fold along the dotted lines and take me with you so you don't miss any of the fun!

FOLD

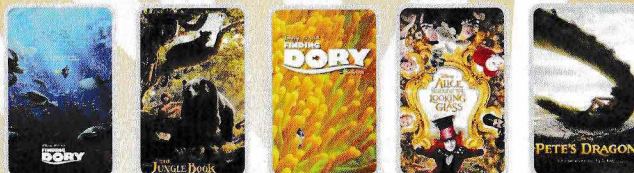
YOUTH ACTIVITIES OPEN HOUSE  
A non-secured program with activities for families, adults and children of all ages to enjoy together.



THURSDAY, AUGUST 11, 2016 - DAY AT SEA

# BUENA VISTA THEATRE

Deck 4 & 5, Midship



FAMILY MOVIE  
FUN TIME

DOLBY 3D

Open Captioning

8:30 am Duration: 1 hr 45 mins Rating: PG	10:45 am Duration: 1 hr 46 mins Rating: PG	1:00 pm Duration: 1 hr 45 mins Rating: PG	5:30 pm & 8:15 pm Duration: 1 hr 48 mins Rating: PG	12:01 am Duration: 1 hr 42 mins Rating: PG
--	---	--	---	---

## Character Appearances

### PETER PAN

Preludes  
9:15 am & 10:15 am

### MINNIE MOUSE

Deck 4, Balcony  
9:30 am, 10:30 am, 2:30 pm,  
5:15 pm, 7:30 pm & 9:30 pm

### DOC MCSTUFFINS

Lobby Atrium (V)  
9:45 am & 10:45 am

### CAPTAIN HOOK

Preludes - 9:45 am

### PRINCESS SOFIA

Deck 4, Balcony  
10:00 am & 11:00 am

### JAKE - THE NEVERLAND PIRATE

Lobby Atrium (V) - 10:15 am

### CHARACTER DANCE PARTY

Lobby Atrium - 1:00 pm

### DAISY DUCK

Deck 4, Balcony  
3:00 pm & 4:45 pm  
Preludes - 10:15 pm

### DISNEY JUNIOR PIRATE & PRINCESS DANCE PARTY

D Lounge - 3:15 pm

### MICKEY MOUSE

Deck 4, Balcony  
3:30 pm, 5:45 pm, 8:00 pm  
& 10:00 pm

### PLUTO

Preludes  
5:00 pm & 8:15 pm

### GOOFY

Preludes  
5:30 pm, 7:45 pm & 9:15 pm

### CHIP & DALE

Preludes - 7:15 pm  
Deck 4, Balcony - 10:30 pm

### DONALD DUCK

Preludes - 9:45 pm

## IMPORTANT NUMBERS

Fire/Security: 7-3001  
Medical Emergency: 7-3000  
Health Center: 7-1923

## SHIP DIRECTORY

### YOUTH ACTIVITIES

DISNEY'S OCEANEER CLUB	DECK 5, MID	9:00 AM - 12:00 AM
DISNEY'S OCEANEER LAB	DECK 5, MID	9:00 AM - 12:00 AM
EDGE	DECK 13, MID	9:00 AM - 1:00 AM
VIBE	DECK 4, FWD	10:00 AM - 2:00 AM
IT'S A SMALL WORLD NURSERY	DECK 5, MID	9:00 AM - 11:30 PM

### POOLS & MORE

\* Children under 12 must have adult supervision in pool areas.

AQUADUCK	DECK 12, MID	9:00 AM - 10:00 PM
AQUALAB	DECK 12, AFT	9:00 AM - 6:00 PM
DONALD'S POOL	DECK 11, MID	9:00 AM - 10:00 PM
MICKEY'S POOL	DECK 11, MID	9:00 AM - 10:00 PM
MICKEY'S SLIDE	DECK 11, MID	9:00 AM - 6:00 PM
NEMO'S REEF	DECK 11, MID	9:00 AM - 6:00 PM
QUIET COVE POOL (18+)	DECK 11, FWD	8:00 AM - 11:00 PM
SATELLITE FALLS (18+)	DECK 13, FWD	6:00 AM - 8:00 PM

Please note, "selfie sticks" are not permitted in the pools or on the slides.

Complimentary pool vests are available for children to use in the pools onboard.  
They are located on the pool deck.

### RECREATION

GOLF/SPORTS SIMULATORS	DECK 13, AFT	9:00 AM - 6:00 PM
GOOFY GOLF	DECK 13, AFT	8:00 AM - 10:00 PM
GOOFY'S SPORTS DECK	DECK 13, AFT	8:00 AM - 6:00 PM
MIDSHIP DETECTIVE AGENCY	DECKS 2 & 5, MID	9:00 AM - 10:00 PM
PORT ADVENTURES DESK	DECK 5, MID	10:00 AM - 12:00 PM 2:00 PM - 5:00 PM 7:00 PM - 8:30 PM
SENSES FITNESS CENTER (18+)	DECK 11, FWD	6:00 AM - 10:00 PM

### GENERAL INFORMATION

ARR-CADE	DECK 11, AFT	24 HOURS
CONNECT@SEA	DECK 4, MID	9:00 AM - 12:00 PM 1:00 PM - 4:00 PM 7:00 PM - 10:00 PM
DISNEY VACATION CLUB	DECK 4, MID	9:00 AM - 11:30 AM 2:30 PM - 10:00 PM
DISNEY VACATION PLANNING	DECK 4, MID	10:00 AM - 10:00 PM
GUEST SERVICES	DECK 3, MID	24 HOURS
HAIR BRAIDING	DECK 11, MID	9:00 AM - 9:30 PM
MEDICAL HEALTH CENTER	DECK 1, FWD	9:30 AM - 11:00 AM 4:30 PM - 7:00 PM
PORT SHOPPING DESK	DECK 4, MID	7:30 PM - 8:30 PM
PRELUDES	DECK 3, FWD	5:45 PM - 8:45 PM
SENSES SPA AND SALON	DECK 11, FWD	8:00 AM - 10:00 PM
SHUTTERS PHOTO GALLERY	DECK 4, MID	10:00 AM - 11:00 PM
SHUTTERS DIGITAL	DECK 4, MID	10:00 AM - 11:00 PM

### SHOPPING

BIBBIDI BOBBIDI BOUTIQUE	DECK 5, MID	9:00 AM - 9:00 PM
MICKEY'S MAINSAIL	DECK 3, FWD	9:30 AM - 11:00 PM
QUACKS	DECK 11, MID	
SEA TREASURES	DECK 3, FWD	9:30 AM - 11:00 PM
VISTA GALLERY	DECK 4, MID	9:45 AM - 10:30 PM
WHITE CAPS	DECK 3, FWD	9:30 AM - 11:00 PM
WHOZITS & WHATZITS	DECK 11, MID	10:00 AM - 4:00 PM 7:00 PM - 10:00 PM

## DINNER MENU

Animator's Palate : Captains Gala  
Enchanted Garden : Captains Gala  
Royal Court : Captains Gala  
Dining Times: 5:45pm & 8:15pm

## DRINK OF THE DAY

High Tide  
(Alcoholic)  
Passion Cream Freeze  
(Non-Alcoholic)

## WEATHER FORECAST

Today: Sunny  
High: 80°F/27°C  
Tomorrow: Sunny  
High: 84°F/29°C

Evening Attire: Optional Dress Up

## DINING & LOUNGES

### BREAKFAST

CABANAS CONTINENTAL	DECK 11, AFT	7:15 AM - 7:45 AM
CABANAS	DECK 11, AFT	7:45 AM - 11:30 AM
ENCHANTED GARDEN	DECK 2, MID	9:00 AM - 10:45 AM
ROYAL COURT BRUNCH	DECK 3, MID	10:00 AM - 1:00 PM

### LUNCH

CABANAS	DECK 11, AFT	11:45 AM - 2:00 PM
FILLMORE'S FAVORITES	DECK 11, MID	11:00 AM - 6:30 PM
LUIGI'S PIZZA	DECK 11, MID	11:00 AM - 6:30 PM
PALO BRUNCH (18+) (RESERVATIONS REQ. & NOM. FEE APPLIES)	DECK 12, AFT	10:00 AM - 12:30 PM
ROYAL COURT BRUNCH	DECK 3, MID	10:00 AM - 1:00 PM
TOW MATER'S GRILL	DECK 11, MID	11:00 AM - 11:00 PM

### DINNER

ANIMATOR'S PALATE	DECK 3, AFT	5:45 PM & 8:15 PM
ENCHANTED GARDEN	DECK 2, MID	5:45 PM & 8:15 PM
ROYAL COURT	DECK 3, MID	5:45 PM & 8:15 PM
CABANAS TABLE SERVICE	DECK 11, AFT	6:30 PM - 8:30 PM
PALO (18+) (RESERVATIONS REQ. & NOM. FEE APPLIES)	DECK 12, AFT	6:00 PM - 8:30 PM
REMY (18+) (RESERVATIONS REQ. & NOM. FEE APPLIES)	DECK 12, AFT	6:00 PM - 8:30 PM

### LATE NIGHT SNACKS

LA PIAZZA (18+)	DECK 4, AFT	10:45 PM - 11:45 PM
LUIGI'S PIZZA	DECK 11, MID	9:30 PM - 12:00 AM

### ADDED FEATURES

BEVERAGE STATION	DECK 11, MID	24 HOURS
EYE SCREAM	DECK 11, MID	11:00 AM - 11:00 PM
ROOM SERVICE	DIAL 0	24 HOURS

### ENTERTAINMENT - LOUNGES - BARS

Adults must be 21 and older to consume alcoholic beverages.

BON VOYAGE	DECK 3, MID	10:00 AM - 11:00 PM
COVE BAR (18+)	DECK 11, FWD	10:00 AM - 11:00 PM
COVE CAFE (18+)	DECK 11, FWD	6:30 AM - 12:00 AM
CURRENTS (18+)	DECK 13, FWD	10:00 AM - 11:00 PM
D LOUNGE	DECK 4, MID	SHOWTIMES
FROZONE TREATS	DECK 11, MID	10:00 AM - 6:00 PM
LA PIAZZA (18+ AFTER 9:00 P.M.)	DECK 4, AFT	12:00 PM - 12:00 AM
MERIDIAN (18+)	DECK 12, AFT	10:00 AM - 2:30 PM 5:30 PM - 12:00 AM
O'GILLS PUB (18+ AFTER 9:00 P.M.)	DECK 4, AFT	12:00 PM - 12:00 AM
OOH LA LA (18+)	DECK 4, AFT	5:30 PM - 12:00 AM
OUTLOOK	DECK 14, MID	
SKYLINE (18+)	DECK 4, AFT	5:30 PM - 12:30 AM
THE TUBE (18+ AFTER 9:00 P.M.)	DECK 4, AFT	7:00 PM - 8:30 PM 9:30 PM - 2:00 AM
VISTA CAFE	DECK 4, MID	7:00 AM - 11:00 PM
WAVES	DECK 12, AFT	11:00 AM - 6:00 PM

Public Health Advisory: Consuming raw or under-cooked meats, poultry, seafood, shellfish, or eggs may



Disney's private island Castaway Cay not only offers a terrific family beach day, but many other excursions and rentals to compliment. Snorkeling, bike and float rentals, parasailing plus much more, means that there is something for everyone at Disney Castaway Cay. To make your reservation, visit the Port Adventures Desk, Deck 5, Midship.

(H) Hallway - (S) Starboard Side - (P) Port Side - (V) Vestibule

For details of daily Disney character appearances, refer to the character line on your Navigator Grid, or the digital character board in the Lobby Atrium.

©DISNEY