

# PERSONAL NAVIGATOR

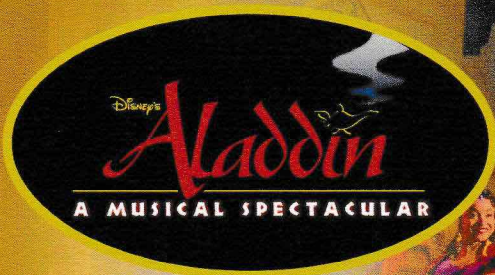


SUNDAY, AUGUST 7, 2016

Sunrise: 6:50 am Sunset: 7:59 pm  
Evening Attire: Formal

Today: Sunny High: 84°F/29°C  
Tomorrow: Sunny High: 86°F/30°C

DAY AT SEA

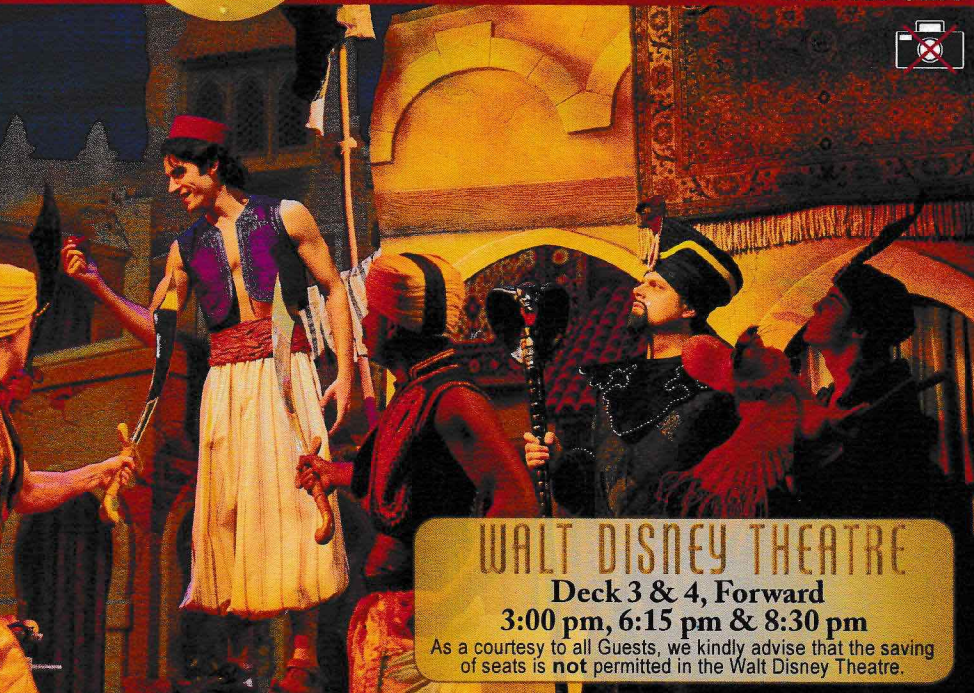


A fast-paced, musical comedy based on the beloved animated film.

Aladdin, the "street rat" of Agrabah, meets a wise-cracking Genie, battles the evil Jafar, and falls in love with the beautiful and spirited Princess Jasmine. Disney storytelling at its best.



Assistance available at the entrance to the Walt Disney Theatre 30 minutes prior to show time.



WALT DISNEY THEATRE

Deck 3 & 4, Forward  
3:00 pm, 6:15 pm & 8:30 pm

As a courtesy to all Guests, we kindly advise that the saving of seats is **not** permitted in the Walt Disney Theatre.

## Disney FANTASY Fun Facts

**Tonnage:** 130,000 Gross Tons

**Height:** 216 Feet

**Length:** 1115 Feet

### Important Dates

**Name Announcement:** March 10, 2009

**Steel Cutting:** March 16, 2010

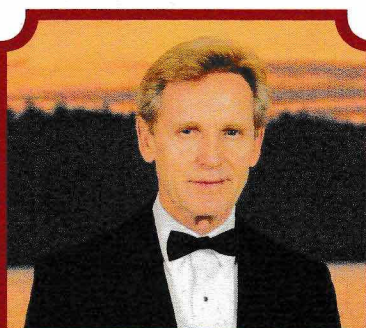
**Keel Laying:** February 11, 2011

**Delivery:** February 9, 2012

Almost four football fields in length, the Disney Fantasy is longer than the height of the Eiffel Tower in Paris (1,063 feet). She is also longer than the height of New York City's famous Chrysler building (1,047 feet).

### The Disney Fantasy's Whistle

The Disney Fantasy's whistle, a prominent element of the "Sailing Away" deck party at the start of the cruise, is quite the musical talent. It's able to perform not just the first musical line of "When You Wish Upon a Star" but also the second line of the song ("makes no difference who you are") plus several measures of "Yo Ho (A Pirate's Life for Me)," "It's a Small World," "Be Our Guest," "Hi Diddle Dee Dee (An Actor's Life for Me)," "A Dream is a Wish," and "Do you want to build a Snowman".



### CAPTAIN'S RECEPTION

Enjoy live music and a cocktail while meeting some of the ship's officers.

Lobby Atrium, Deck 3, Midship,  
5:15 pm & 7:30 pm

Enjoy an exclusive photo opportunity with Commodore Tom at  
5:30 pm & 7:30 pm, Lobby Atrium

## Don't Miss:

### Good Morning Disney Fantasy

Channel 5 - Repeated from 5:00 am - 12:00 pm

Tune in to channel 5 as your Cruise Director highlights the upcoming events and activities for the day.

### Family Variety: Dale K

Walt Disney Theatre, Deck 3, Forward - 11:00 am

Featuring the Hypnosis & Comedy of Dale K, as he entertains the entire family in this fun-filled show.

### Anyone Can Cook: Sea Bass (18+)

D Lounge, Deck 4, Midship - 2:15 pm

From our galley to yours. Join our chefs as they show you how to prepare delicious dishes. Today's Menu - Sea Bass.

### Variety Show: Marcus Monroe (18+)

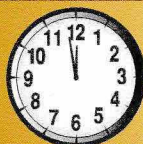
The Tube, Deck 4, Aft - 9:45 pm & 10:45 pm

Featuring the Juggling & Comedy of Marcus Monroe, as he entertains you in this adult exclusive show.

### Formal Night After Party

D Lounge, Deck 4, Midship - 9:45 pm

Join your Cruise Staff as we continue the party, with special appearances from the world famous Disney Characters.



### TIME ZONE CHANGE

Remember to turn your clocks **BACK 1 HOUR** upon retiring on **SUNDAY** evening, or first thing **MONDAY** morning.

## DINNER MENU

Animator's Palate : Pacific Rim Cuisine  
Enchanted Garden : Continental Market Cuisine  
Royal Court : French Cuisine

## DRINK OF THE DAY

Bahama Mama (Alcoholic)  
Coco Bali (Non Alcoholic)

### IMPORTANT NUMBERS

Fire/Security: 7-3001  
Medical Emergency: 7-3000  
Health Center: 7-1923



# ADULT ACTIVITY HIGHLIGHTS

## SENSES SPA FITNESS CLASSES & SEMINARS

*Pure Form Pilates* - Donald's Pool - 7:00 am  
*Fab Abs* - Senses Spa & Salon - 7:45 am  
*Body Sculpt Boot Camp* (Nom. Fee) - Senses Fitness Center - 8:30 am  
*Introduction to Acupuncture* - Senses Spa & Salon - 9:00 am  
*Detox for Health & Weight Loss* - Senses Spa & Salon - 10:30 am  
*How to Look Ten Years Younger Today* - Senses Spa & Salon - 11:30 am  
*Acupuncture Seminar: Arthritis Solutions* - Senses Spa & Salon - 1:30 pm  
*Good Feet Seminar: Walking In Comfort* - Senses Spa & Salon - 2:00 pm  
*Secrets to a Flatter Stomach* - Senses Spa & Salon - 2:30 pm  
*Non-Surgical Facelift Seminar* - Senses Spa & Salon - 3:15 pm  
*Tour De Cycle* (Sign-Up Required) - Senses Fitness Center - 4:00 pm  
*Complimentary Footprint Analysis* - Senses Spa & Salon - 5:00 pm  
*Total Body Conditioning* - Senses Spa & Salon - 6:00 pm



## TASTING CLASSES

*Chocolate & Liquor Tasting* (21+) - Ooh La La - 12:15 pm  
*Martini Tasting* (21+) - Meridian - 1:00 pm  
*Champagne Tasting* (21+) - Ooh La La - 1:45 pm  
*Mixology* (21+) - Meridian - 3:00 pm; Skyline - 4:00 pm  
*Tequila & Margarita Tasting* (21+) - Ooh La La - 4:30 pm  
*Whiskey Tasting* (21+) - Cove Cafe - 10:00 pm  
*Cognac Tasting* (21+) - Meridian - 10:30 pm  
 Please make reservations for tastings at Guest Services for a nominal fee.  
 Tasting Seminars are only for Guests 21 and older.

## 1820 SOCIETY: LUNCH

*Cabanas, Deck 11, Aft - 12:00 pm*  
 Get to know your fellow Society members over lunch.



## 1820 SOCIETY: MINI GOLF

*Goofy Golf, Deck 13, Aft - 3:45 pm*  
 Can you get a hole in one? Give it a try with some mini golf.

## 1820 SOCIETY: ICE CREAM SOCIAL

*Frozone Treats, Deck 11, Midship - 9:45 pm*  
 Join your fellow Society members for some ice cream and conversation.

## ART OF THE THEME SHOW TOUR

*Meridian, Deck 12, Aft - 10:15 am*  
 Join us for a guided tour highlighting the design, Imagineering and artistry of the ship. This tour is reserved for Guests 18 and over.

## TRIBUTE TO FRANK SINATRA WITH CHUCK PERRY

*La Piazza, Deck 4, Aft - 7:30 pm*  
 Join Chuck Perry as he plays live for your listening pleasure.

## 50'S AND 60'S MUSIC TRIVIA

*O'Gills Pub, Deck 4, Aft - 7:30 pm*  
 Tune in for some trivia featuring popular music from the 50's and 60's.



# FUN FOR ALL AGES HIGHLIGHTS

## WAKE UP WITH DISNEY JUNIOR

*D Lounge, Deck 4, Midship - 8:30 am*  
 What happens when you experience unlimited fun with your favorite Disney Junior shows? You get an exciting dance party designed especially for preschoolers ages seven and under.



## DISNEY ANIMATION: CREATING A CHARACTER

*D Lounge, Deck 4, Midship - 9:45 am*  
 Go behind the scenes at Walt Disney Animation Studios as Walt Disney himself talks about his most famous characters, then learn the basic techniques of drawing your favorite pals in this fun and interesting enrichment program.



## TODDLER TIME

*Outlook, Deck 14, Midship - 10:30 am & 1:00 pm*  
 Join us for some fun activities that your toddler is sure to enjoy.



## ESPN DREAM TEAM DRAFT DAY - FOOTBALL

*O'Gills Pub, Deck 4, Aft - 10:30 am*  
 Join the "Commissioner" and engage in this interactive fantasy football draft unlike anything you've ever seen! Can YOU draft the greatest football team of all-time?

## DIAMOND JACKPOT BINGO

*Bingo Pre-Sales start at 11:00 am*  
*D Lounge, Deck 4, Midship - 11:15 am*  
 Join us for 4 cash prize games and your chance to win a diamond pendant! Everyone attending will also receive a FREE Island Charm courtesy of Diamonds International! Pre-Sales start 15 minutes prior to the game.



## DISNEY VACATION CLUB GROUP PREVIEW

*D Lounge, Deck 4, Midship - 12:30 pm*  
 Want to learn more about taking magical vacations year after year? Please see a Disney Vacation Club representative on Deck 4, Midship, or call 7-2805 from your stateroom phone for more information about our interactive group presentation.



## THE QUEST

*The Tube, Deck 4, Aft - 1:00 pm*  
 Enjoy the wildest and wackiest scavenger team event on the seven seas!



## MICKEY 200

*The Tube, Deck 4, Aft - 1:45 pm*  
 Don't eat your vegetables... race them in this wild and wacky charge to the finish line. May the best veggie win! (Limited Availability)

## PIRATE LINE DANCING

*Lobby Atrium, Deck 3, Midship - 3:00 pm*  
 Come join your Cruise Staff as they teach you some of the dances for the Pirate Party this cruise.

## \$5,000 MEGA JACKPOT SENSES SPA BINGO

*Bingo Pre-Sales start at 4:00 pm*  
*D Lounge, Deck 4, Midship - 4:15 pm*  
 Don't miss your chance to take home big money! 4 CASH prize games and great raffle prizes to be won! Complete the fourth game in 46 numbers or less and win the \$5,000 Mega Jackpot! Plus get Spa Prizes that will pamper you, including a mini facial and massages all courtesy of the Senses Spa and Salon. Pre-Sales start 15 minutes prior to game.



## SO YOU THINK YOU KNOW YOUR FAMILY?

*D Lounge, Deck 4, Midship - 7:30 pm*  
 This fun-filled family game show is always full of surprises. Find out how well you know, or don't know your family!





# YOUTH ACTIVITIES HIGHLIGHTS

## DINE & PLAY

A convenience for families dining at 8:15 pm, our Youth Activities counselors will be available at 9:15 pm at the entrance of Royal Court, Enchanted Garden and Animator's Palate dining rooms to bring registered children to join the fun in the Youth Activity areas.



**Deck 5, Midship (7-1440)**  
(3-12 years old)

9:00 am - 12:00 am

## CRUISIN' WITH CRUSH

2:00 pm

Swim on by Disney's Oceaneer Club and join Crush in an undersea adventure you'll never forget.

## HEFFALUMP EXPODISHUN

4:30 pm

The Heffalump is missing! Help us find him before the Woozles do!



**Deck 5, Midship (7-1445)**  
(3-12 years old)

9:00 am - 12:00 am

## GET THE HOOK

3:15 pm

A villainous villain has stolen Captain Hook's prized golden hook. Become a member of the Top Deck Detective Agency and help solve the clues to retrieve Hook's hook.

## PISTON CUP CHALLENGE

10:00 pm

It's Dinoco time and you're part of the pit crew! Design your own race car and see if you've got what it takes to end up in the winner's circle!



**Deck 13, Midship (7-9743)**  
(11-14 years old)

9:00 am - 1:00 am

## DISNEY ANIMATION: CREATING A CHARACTER

11:00 am

Go behind the scenes at Walt Disney Animation Studios as Walt Disney himself talks about his most famous characters, then learn the basic techniques of drawing Mickey and Donald in this fun and interesting enrichment program.

## BRAINS AND BRAWNS

2:30 pm

You will compete against each other to solve clues, take part in physical challenges, and reach the finish first.



**Entrance on Deck 4, Forward (7-9418)**  
(14-17 years old)

9:00 am - 2:00 am

## ZOMBIFIED

12:00 pm

A big movie producer is looking for zombies to help him film the finale to his latest masterpiece, Zombified.

## SPORTS DECK FUN

1:15 am

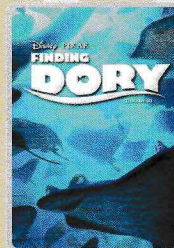
Take over the Sports Deck with some fun and friendly competition.

# BUENA VISTA THEATRE

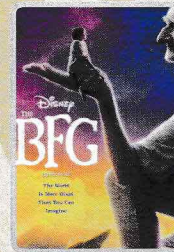
Deck 4 & 5, Midship  
Today's Movies



8:30 am  
Duration:  
1 hr 48 mins  
Rating: PG



**DOLBY 3D**  
5:30 pm & 8:15 pm  
Duration:  
1 hr 45 mins  
Rating: PG



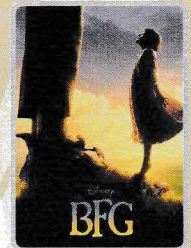
**DOLBY 3D**  
12:30 pm  
Duration:  
1 hr 55 mins  
Rating: PG



7:45 pm  
Duration:  
11 mins  
Rating: G



3:00 pm  
Duration:  
1 hr 45 mins  
Rating: PG



10:30 pm  
Duration:  
1 hr 55 mins  
Rating: PG



## FAMILY VARIETY ACT

Featuring the  
Comedy & Hypnosis  
of Dale K,  
as he entertains the entire  
family in this fun filled show.

*Walt Disney Theatre,  
Deck 3, Forward,  
11:00 am*

(Doors open 15 minutes prior to show time)



## ADULT VARIETY ACT

Enjoy the  
Juggling & Comedy  
of Marcus Monroe  
as he entertains you in  
this adult exclusive show.

*The Tube (18+),  
Deck 4, Aft,  
9:45 pm & 10:45 pm*

## YOUTH ACTIVITIES OPEN HOUSE

Open House is an opportunity for all to come and participate in a variety of exciting activities and free time in the Oceaneer Club, Oceaneer Lab, it's a small world nursery, Vibe and Edge throughout the cruise. During these times secured programming will still be offered in the other venue for those looking to check their children into care.

**Disney's Oceaneer Lab:** 7:00 pm - 8:30 pm

**Edge:** 9:00 am - 10:00 am & 6:00 pm - 7:30 pm

**Vibe:** 9:00 am - 10:00 am & 7:30 pm - 9:00 pm



# MORE TO ENJOY WHILE ONBOARD

## EASTERN CARIBBEAN

Disney Cruise Line offers a variety of sailings to exotic ports in the Caribbean, including port of Tortola, in the British Virgin Islands. Most voyages even include a stop at Disney Castaway Cay. Visit the Disney Vacation Planning desk, Deck 4, Midship, for more information. Disney Vacation Planning tends to get busy on the last day of sailing. Don't miss the opportunity to plan your next Disney vacation.

## DISNEY VACATION CLUB® GROUP PREVIEW

Want to learn more about taking magical vacations year after year? Please see a Disney Vacation Club representative on Deck 4, Midship, or call 7-2805 from your stateroom phone for more information about our interactive group presentation.

## PORT SHOPPING INFORMATION

Join your Port Shopping Guides, Candice and Mark, to learn about the incredible tax & duty free shopping ashore this cruise. Everything from diamonds to t-shirts, Rolex to rum-cake! Port Shopping Talk, Buena Vista Theatre, Deck 4, Midship, 11:15 am. FREE Charm Bracelet for everyone who attends! Raffle to win OVER \$1000 in prizes & giveaways! Later, join Candice and Mark as they give insider tips on shopping for gemstones in the Caribbean at the Diamond & Gemstone Seminar, The Tube, Deck 4, Aft, 3:00 pm.

## Connect@Sea

We are now offering a NEW and improved Internet service to stay connected on your cruise like no other in the industry! Internet packages range from \$0.25 per MB - \$89.00 (1000 MB package). For more information contact your Connect@Sea Expert or Guest Services onboard.

## ONBOARD AIRLINE CHECK IN

Stop by the Guest Services Desk, Deck 3, Midship to find out about enrolling in our Onboard Airline Check In Service.

## CASTAWAY CAY 5K REGISTRATION (10+)

Sign up today for the Castaway Cay 5K! Please visit the Port Adventures Desk or the Guest Services Desk to register at anytime prior to our arrival at Disney Castaway Cay. Please note that runners must be 10 years of age or older to participate.

## MIDSHIP DETECTIVE AGENCY

The puppies from 101 Dalmatians have gone missing! Use your special detective "badge" to track down the puppies and catch the villain who took them. Decks 2 & 5, Midship.



Disney Cruise Line

## PORT ADVENTURES

The best way to explore our ports of call is through the eyes of a Port Adventure. Be adventurous and climb up Dunn's River Falls or explore the Green Grotto Caves in Falmouth. Why not swim with stingrays in Grand Cayman or explore the ruins in Cozumel.

Visit the **Port Adventures Desk, Deck 5, Midship**, for more information.

## SHOPPING

### BIBBIDI BOBBIDI BOUTIQUE

Young Princesses and Princes can get ready for a formal evening with a makeover at the Bibbidi Bobbidi Boutique. Make your reservations by visiting Bibbidi Bobbidi Boutique, Deck 5, Midship or dialing extension 7-9438. Limited space available.

### STYLISH TAG HEUER WATCHES

TAG Heuer is one of the largest and fastest growing Swiss brands and is in a constant quest for innovation and high precision. Stop by White Caps today where you'll discover the luxury and style of a TAG Heuer watch. White Caps, Deck 3, Forward.

### SOPHIA FIORI GUESS THE CARAT WEIGHT

Whoever guesses closest wins a Sophia Fiori fine jewelry piece! Winner announced tonight at 7:30 pm. Must be present to win. White Caps, Deck 3, Forward.

### THOMAS KINKADE: HIDDEN CHARACTER CHALLENGE!

Known as the "Painter of Light," Thomas Kinkade is one of Disney's most celebrated artists having created an array of enchanting artwork. Stop by the Vista Gallery today to view his unique collection of paintings featuring some of your favorite Disney characters! Also, take the time to try and find all of the hidden Disney characters scattered throughout his paintings. Are you up to the challenge? Deck 4, Midship.

### COLLECT YOUR DISNEY CRUISE LINE MEMORIES

Store the many happy memories you've photographed while on your Disney cruise inside a 2016 Disney Cruise Line photo album and scrapbook, available in Mickey's Mainsail, Deck 3, Forward.

### BIBBIDI BOBBIDI BOUTIQUE

Does your Princess have more than one transformation reserved during this voyage? The Royal Sea Package contains multiple transformations in addition to unique offerings such as a Royal Rolling Trunk and a Keepsake Glass Slipper. Inquire about upgrading your experience to the Royal Sea Package by visiting the Bibbidi Bobbidi Boutique or by dialing extension 7-9438.



**SENSES**  
SPA & SALON

## SPA SPECIAL: IONITHERMIE

Would you like to lose between 1 - 8 inches?  
Speed up your metabolism?  
Firm your muscle tone?  
Improve appearance of cellulite?  
If so, then Ionithermie is the best treatment for you!  
50 minutes for \$155

**Senses Spa & Salon, Deck 11, Forward, Extension 7-1465**

## SOPHIA FIORI DIAMONDS

Discover the elegant Disney inspired diamond jewelry collection by Sophia Fiori, one of the world's leading designers of diamond jewelry.

**AVAILABLE AT WHITE CAPS  
DECK 3, FORWARD**



## Shutters

## FORMAL PORTRAITS TONIGHT!

Now that the family is dressed up and ready to enjoy the evening, capture the memories in your formal attire by visiting our professional portrait studios located in the Lobby Atrium, Deck 3, Midship.

5:15 pm - 6:00 pm

7:15 pm - 8:30 pm

9:30 pm - 10:15 pm

*\*Please note that photos are available for viewing on our interactive photo kiosks approximately five hours after being taken and are only available for purchase during this cruise. Photo sizes are preset and cannot be changed.*

## IMPORTANT INFORMATION

### Security Notice

All Guests (including children) who wish to disembark the ship are required to present their Key to the World card at the gangway. A photo ID is also required for those Guests who are 18 years of age or older. Guests under the age of 18 are required to have a parent, guardian or other responsible adult sign an authorization form at the Guest Service Desk if they wish to go ashore unaccompanied or with any adult from another stateroom.

### Insect Repellent Advisory

Protect against mosquito bites and related illnesses when going ashore. Insect repellent is available for purchase in White Caps. When using both sunscreen and insect repellent, use sunscreen first and apply insect repellent on top of sunscreen.

### Cold and Flu Reminder

Please wash hands frequently and thoroughly, particularly before meals. Contact the Health Center by dialing 7-1923, should anyone in your party become ill.

### Corridor Quiet Hours

As a courtesy to all our Guests, please recognize quiet hallway hours from 10:00 pm till 8:00 am

### Inclement Weather

For the safety of all Guests, outdoor events may be changed due to unforeseen weather conditions.

### Environmental Message

With Disney's commitment to the Environment, please refrain from throwing anything over the Ship's side. Thank you!

### No Reserved Seats Policy

As a courtesy to all our Guests, we kindly advise that the saving of seats is not permitted in the Walt Disney Theatre, and the saving of the sun loungers is not permitted on Deck 11, 12, and 13. Items left unattended will be returned to lost and found at Guest Services, Deck 3 Midship.

### Smoking

For the comfort of our Guests, the following areas are designated as smoking areas:

\*Deck 13, forward, port side by Currents

\*Deck 12, aft, port side outdoor area that is accessible through the Meridian Lounge

\*Deck 4, aft, port side from 6:00 pm to 6:00 am only (all of Deck 4 is non-smoking from 6:00 am to 6:00 pm)

Smoking is prohibited inside all Guest staterooms and on stateroom verandahs. Guests found smoking in their staterooms or on their verandahs will be charged a \$250 stateroom recovery fee. Electronic cigarettes may only be used in designated smoking areas.

### Walt Disney Theatre

Theatrical performances may use artificial fog, strobe lights, pyrotechnics and other special effects. For the safety of our performers and the comfort of those around you, the use of any photography, video recording device or any electronic equipment is prohibited.

### Verandah Safety

Please do not leave any combustible materials on your balcony when not present in your stateroom for safety reasons.



Morning	8:30	8:45	9:00	9:15	9:30	9:45	10:00	10:15	10:30	10:45	11:00	11:15	11:30	11:45	12:00	12:15	12:30	12:45	1:00	1:15	1:30									
FUNNEL VISION	A Goofy Movie (G) Funnel Vision					Frozen (PG) Funnel Vision										Movie Challenge Poolside Funnel Vision														
BUENA VISTA THEATRE	Zootopia (PG) Duration: 1 Hour 48 Minutes										Port Shopping Talk										The BFG (PG) <b>DOLBY 3D</b> Duration: 1 Hour 55 Minutes									
CHARACTERS	Minnie Dk 4, Balcony	Woody Lobby Atrium (V)	Pluto Dk 4, Balcony		Goofy Dk 4, Balcony		Pluto Dk 4, Balcony		Jessie Lobby Atrium (V)										Stitch Dk 4, Balcony		Donald Dk 4, Balcony									
FUN FOR ALL AGES	D Lounge				Crafts: 3D Crafts La Piazza		D Lounge		Disney Trivia La Piazza		Toddler Time Outlook		The Hypnosis & Comedy of <b>DALE K</b> Walt Disney Theatre				Deck Stage		The Quest The Tube		Toddler Time Outlook									
	Interdenominational Service Outlook (Guest Led)					Walking Ship Tour Preludes					ESPN Dream Team Draft Day O'Gills Pub					Bingo Pre Sales					Diamond Jackpot Bingo D Lounge					Disney Vacation Club Group Preview D Lounge				
ADULTS	Friends of Bill W. Outlook		Crafts: Tile Coasters O'Gills Pub		Pub Quiz O'Gills Pub		Art of The Theme Show Tour Meridian		Port Shopping Talk Buena Vista Theatre		1820 Society: Lunch Cabanas		Cruisin' Solo Lunch Royal Court		Crafts: Origami Creations O'Gills Pub															
VIBE 14-17 YEARS OLD	Youth Activities Open House					Coffee Break					Disney Scene It					Zombified														
EDGE 11-14 YEARS OLD	Youth Activities Open House					GAGA Ball					Disney Animation: Creating a Character					Guesstures					Marshmallow Olympics									
OCEANEER LAB 3-12 YEARS OLD						Super Sloppy Science										Lunch					Magic PlayFloor									
	Stitch's Adventure Squad										Wacky Relays																			
	Pre-School Fun (3-5 Years Old)					Magic Show																								
OCEANEER CLUB 3-12 YEARS OLD	Little Einstein's Adventure										Aloha Luau																			

Symbol for activities that will be repeated during the cruise



FOLD

Fold along the dotted lines and take me with you so you don't miss any of the fun!

FOLD

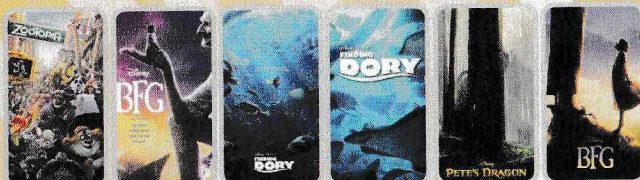
**YOUTH ACTIVITIES OPEN HOUSE**  
A non-secured program with activities for families, adults and children of all ages to enjoy together.



**SUNDAY, AUGUST 7, 2016 - DAY AT SEA**

# BUENA VISTA THEATRE

Deck 4 & 5, Midship



**DOLBY 3D**

**DOLBY 3D**

8:30 am Duration: 1 hr 48 mins Rating: PG	12:30 pm Duration: 1 hr 55 mins Rating: PG	3:00 pm Duration: 1 hr 45 mins Rating: PG	5:30 pm & 8:15 pm Duration: 1 hr 45 mins Rating: PG	7:45 pm Duration: 11 mins Rating: G	10:30 pm Duration: 1 hr 55 mins Rating: PG
--	---	--	---	--	---

## Character Appearances

### MINNIE MOUSE

Deck 4, Balcony  
8:30 am, 4:30 pm & 9:45 pm  
Preludes  
3:45 pm, 5:45 pm & 7:45 pm

### WOODY

Lobby Atrium (V)  
8:45 am & 9:45 am

### PLUTO

Deck 4, Balcony  
9:00 am & 10:00 am

### JESSIE

Lobby Atrium (V)  
9:15 am & 10:15 am

### GOOFY

Deck 4, Balcony - 9:30 am  
Preludes  
5:15 pm & 10:30 pm

### STITCH

Deck 4, Balcony  
1:00 pm & 2:00 pm

### DONALD DUCK

Deck 4, Balcony - 1:30 pm  
Preludes  
4:15 pm & 10:00 pm



### CHIP & DALE

Deck 4, Balcony - 4:00 pm  
Preludes - 7:15 pm

### DAISY DUCK

Preludes  
4:45 pm, 8:15 pm & 9:30 pm

### MICKEY MOUSE

Deck 4, Balcony  
5:00 pm, 7:30 pm & 10:15 pm

## IMPORTANT NUMBERS

Fire/Security: 7-3001  
Medical Emergency: 7-3000  
Health Center: 7-1923

## SHIP DIRECTORY

### YOUTH ACTIVITIES

DISNEY'S OCEANEER CLUB	DECK 5, MID	9:00 AM - 12:00 AM
DISNEY'S OCEANEER LAB	DECK 5, MID	9:00 AM - 12:00 AM
EDGE	DECK 13, MID	9:00 AM - 1:00 AM
VIBE	DECK 4, FWD	9:00 AM - 2:00 AM
IT'S A SMALL WORLD NURSERY	DECK 5, MID	9:00 AM - 11:30 PM

### POOLS & MORE

\* Children under 12 must have adult supervision in pool areas.

AQUADUCK	DECK 12, MID	9:00 AM - 10:00 PM
AQUALAB	DECK 12, AFT	9:00 AM - 6:00 PM
DONALD'S POOL	DECK 11, MID	9:00 AM - 10:00 PM
MICKEY'S POOL	DECK 11, MID	9:00 AM - 10:00 PM
MICKEY'S SLIDE	DECK 11, MID	9:00 AM - 6:00 PM
NEMO'S REEF	DECK 11, MID	9:00 AM - 6:00 PM
QUIET COVE POOL (18+)	DECK 11, FWD	8:00 AM - 11:00 PM
SATELLITE FALLS (18+)	DECK 13, FWD	6:00 AM - 8:00 PM

Please note, "selfie sticks" are not permitted in the pools or on the slides.  
Complimentary pool vests are available for children to use in the pools onboard.  
They are located on the pool deck.

### RECREATION

GOLF/SPORTS SIMULATORS	DECK 13, AFT	9:00 AM - 6:00 PM
GOOFY GOLF	DECK 13, AFT	8:00 AM - 10:00 PM
GOOFY'S SPORTS DECK	DECK 13, AFT	8:00 AM - 6:00 PM
MIDSHIP DETECTIVE AGENCY	DECKS 2 & 5, MID	9:00 AM - 10:00 PM
PORT ADVENTURES DESK	DECK 5, MID	9:00 AM - 5:00 PM 7:00 PM - 8:30 PM
SENSES FITNESS CENTER (18+)	DECK 11, FWD	6:00 AM - 10:00 PM

### GENERAL INFORMATION

ARR-CADE	DECK 11, AFT	24 HOURS
CONNECT@SEA	DECK 4, MID	9:00 AM - 12:00 PM 1:00 PM - 4:00 PM 7:00 PM - 10:00 PM
DISNEY VACATION CLUB	DECK 4, MID	9:00 AM - 11:00 AM 2:30 PM - 10:00 PM
DISNEY VACATION PLANNING	DECK 4, MID	10:00 AM - 8:30 PM
GUEST SERVICES	DECK 3, MID	24 HOURS
HAIR BRAIDING	DECK 11, MID	9:00 AM - 9:30 PM
MEDICAL HEALTH CENTER	DECK 1, FWD	9:30 AM - 11:00 AM 4:30 PM - 7:00 PM
PORT SHOPPING DESK	DECK 4, MID	7:30 PM - 8:30 PM
PRELUDES	DECK 3, FWD	1:30 PM - 2:30 PM 5:45 PM - 8:45 PM
SENSES SPA AND SALON	DECK 11, FWD	8:00 AM - 10:00 PM
SHUTTERS PHOTO GALLERY	DECK 4, MID	9:30 AM - 12:00 PM 7:30 PM - 11:00 PM
SHUTTERS DIGITAL	DECK 4, MID	9:30 AM - 12:00 PM 7:30 PM - 11:00 PM

### SHOPPING

BIBBIDI BOBBIDI BOUTIQUE	DECK 5, MID	9:00 AM - 9:00 PM
MICKEY'S MAINSAIL	DECK 3, FWD	9:30 AM - 11:00 PM
QUACKS	DECK 11, MID	
SEA TREASURES	DECK 3, FWD	9:30 AM - 11:00 PM
VISTA GALLERY	DECK 4, MID	9:45 AM - 10:30 PM
WHITE CAPS	DECK 3, FWD	9:30 AM - 11:00 PM
WHOZITS & WHATZITS	DECK 11, MID	10:00 AM - 4:00 PM 7:00 PM - 10:00 PM

## DINNER MENU

Animator's Palate : Pacific Rim Cuisine  
Enchanted Garden : Continental Market Cuisine  
Royal Court : French Cuisine  
Dining Times: 5:45pm & 8:15pm

## DRINK OF THE DAY

Bahama Mama (Alcoholic)  
Coco Bali (Non Alcoholic)

## WEATHER FORECAST

Today: Sunny  
High: 84° F/29°C  
Tomorrow: Sunny  
High: 86° F/30°C

**Evening Attire: Formal**

## DINING & LOUNGES

### BREAKFAST

CABANAS CONTINENTAL	DECK 11, AFT	7:00 AM - 7:30 AM
CABANAS	DECK 11, AFT	7:30 AM - 11:30 AM
ROYAL COURT	DECK 3, MID	8:30 AM - 10:00 AM

### LUNCH

CABANAS	DECK 11, AFT	11:45 AM - 2:00 PM
FILLMORE'S FAVORITES	DECK 11, MID	11:00 AM - 6:30 PM
LUIGI'S PIZZA	DECK 11, MID	11:00 AM - 6:30 PM
PALO BRUNCH (18+) (RESERVATIONS REQ. & NOM. FEE APPLIES)	DECK 12, AFT	10:00 AM - 12:30 PM
ROYAL COURT	DECK 3, MID	12:00 PM - 1:30 PM
TOW MATER'S GRILL	DECK 11, MID	11:00 AM - 11:00 PM

### DINNER

ANIMATOR'S PALATE	DECK 3, AFT	5:45 PM & 8:15 PM
ENCHANTED GARDEN	DECK 2, MID	5:45 PM & 8:15 PM
ROYAL COURT	DECK 3, MID	5:45 PM & 8:15 PM
CABANAS TABLE SERVICE	DECK 11, AFT	6:30 PM - 8:30 PM
PALO (18+) (RESERVATIONS REQ. & NOM. FEE APPLIES)	DECK 12, AFT	6:00 PM - 8:30 PM
REMY (18+) (RESERVATIONS REQ. & NOM. FEE APPLIES)	DECK 12, AFT	6:00 PM - 8:30 PM

### LATE NIGHT SNACKS

LA PIAZZA (18+)	DECK 4, AFT	10:45 PM - 11:45 PM
LUIGI'S PIZZA	DECK 11, MID	9:30 PM - 12:00 AM

### ADDED FEATURES

BEVERAGE STATION	DECK 11, MID	24 HOURS
EYE SCREAM	DECK 11, MID	11:00 AM - 11:00 PM
ROOM SERVICE	DIAL O	24 HOURS

### ENTERTAINMENT - LOUNGES - BARS

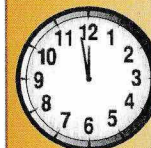
Adults must be 21 and older to consume alcoholic beverages.

BON VOYAGE	DECK 3, MID	10:00 AM - 11:00 PM
COVE BAR (18+)	DECK 11, FWD	10:00 AM - 10:00 PM
COVE CAFE (18+)	DECK 11, FWD	6:30 AM - 12:00 AM
CURRENTS (18+)	DECK 13, FWD	10:00 AM - 11:00 PM
D LOUNGE	DECK 4, MID	SHOWTIMES
FROZONE TREATS	DECK 11, MID	10:00 AM - 6:00 PM
LA PIAZZA (18+ AFTER 9:00 P.M.)	DECK 4, AFT	12:00 PM - 12:00 AM
MERIDIAN (18+)	DECK 12, AFT	10:00 AM - 12:00 AM
O'GILLS PUB (18+ AFTER 9:00 P.M.)	DECK 4, AFT	12:00 PM - 12:00 AM
OOH LA LA (18+)	DECK 4, AFT	5:30 PM - 12:00 AM
OUTLOOK	DECK 14, MID	
SKYLINE (18+)	DECK 4, AFT	5:30 PM - 12:30 AM
THE TUBE (18+ AFTER 9:00 P.M.)	DECK 4, AFT	7:00 PM - 8:30 PM 9:30 PM - 2:00 AM
VISTA CAFE	DECK 4, MID	7:00 AM - 11:00 PM
WAVES	DECK 12, AFT	10:00 AM - 6:00 PM

Public Health Advisory: Consuming raw or under-cooked meats, poultry, seafood, shellfish, or eggs may increase your risk for food borne illness, especially if you have certain medical condition.

(H) Hallway - (S) Starboard Side - (P) Port Side - (V) Vestibule

For details of daily Disney character appearances, refer to the character line on your Navigator Grid, or the digital character board in the Lobby Atrium.



## TIME ZONE CHANGE

Remember to turn your clocks **BACK 1 HOUR** upon retiring on **SUNDAY** evening, or first thing **MONDAY** morning.