

# PERSONAL NAVIGATOR



SUNDAY, JULY 3, 2016

Sunrise: 3:50 am Sunset: 11:21 pm

Evening Attire: Semi Formal

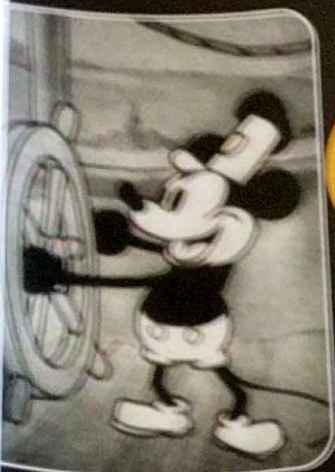
All Ashore: 8:30 am

All Aboard: 4:45 pm

Today: Chance of Showers High: 60°F/16°C

Tomorrow: Chance of Showers High: 58°F/14°C

GEIRANGER, NORWAY



## WALT DISNEY The Dream Goes On



WALT DISNEY THEATRE

Deck 4, Forward

6:30 pm & 8:45 pm

As a courtesy to all Guests, we kindly advise that the saving of seats is **not** permitted in the Walt Disney Theatre.

Assistance available at the entrance to the Walt Disney Theatre 30 minutes prior to show time.

### Welcome to Geiranger

#### Powered by Nature

Admired by people worldwide, Geiranger has an incredible photo op at every turn. This small tourist village is located in western Norway at the headwaters of Geirangerfjord, known as the real jewel of the Norwegian fjords. With its characteristic "S" shape, its awe-inspiring waterfalls, including the spectacular Seven Sisters, the Sultor and the Bridal Veil, and scattered cliffside farms, most long abandoned, still clinging to the towering, near-sheer walls, the fairytale landscape is included on UNESCO's list of World Heritage sites. At nine miles long and more than 800 feet deep, Geirangerfjord is one of the longest, deepest, most narrow fjords in the world.

Geiranger was relatively isolated in the 1800s. People either had to take a packhorse over to the village of Skjåk or make their way on foot over the mountain to Edisdalen. The fjord was particularly long if you were travelling by rowboat. Life was hard enough for people struggling to eke out a living on the mountain ledges along the fjord and on the challenging land of farms in Geiranger village.

Today, Geiranger offers a totally new perspective and a rich history and culture to share. The world looks quite different at 4,000 feet, and Geiranger offers vantage points galore. From hiking or biking the mountain peaks to lavaking on the fjord, walking up from Norddal to sample goat's milk cheeses at a local farm to just breathing the fresh mountain air, Geiranger is a destination that will take your imagination to new heights.



**Geirangerfjord Time Line:**

- 5:30 am Get ready!
- 5:45 am Enter Geirangerfjord
- 6:00 am Seven Sisters Waterfall (Arrival, on Port Side)
- 5:30 pm Seven Sisters Waterfall (Departure, on Starboard Side)

*\*Please Note: All times are approximate & are subject to change.*

#### GOING ASHORE?

Passport and Key To The World Card are required for each individual going ashore, including minors.

#### DINNER MENU

Animator's Palette: Captain's Gala  
 Caribe's: Captain's Gala  
 Lumiere's: Captain's Gala

#### DRINK OF THE DAY

Bay Breeze (Alcoholic)  
 Parrot Song (Non-Alcoholic)

#### IMPORTANT NUMBERS

Fire/Security: 7-3001  
 Medical Emergency: 7-3000  
 Health Center: 7-1923

# ADULT ACTIVITY HIGHLIGHTS

## SENSES SPA FITNESS CLASSES & SEMINARS

*Sunrise Stretch* - Senses Spa Fitness Center - 7:00 am  
*Pub. lbs* - Senses Spa Fitness Center - 7:30 am  
*Body Sculpt Boot Camp* (Nom. Fee) - Senses Spa Fitness Center - 8:00 am  
*Complimentary Footprint Analysis* - Senses Spa & Salon - 9:00 am  
*Pathways To Yoga* - Senses Spa Fitness Center - 11:00 am  
*Pure Form Pilates* - Senses Spa Fitness Center - 4:00 pm  
*Introduction to Acupuncture* - Senses Spa & Salon - 4:30 pm  
*Back Pain Solutions* - Senses Spa & Salon - 5:00 pm

## TASTING CLASSES

*Wineology* (18+) - Keys - 4:00 pm  
*Tequila & Margarita Tasting* (18+) - Cove Cafe - 10:30 pm  
 Please make reservations for tastings at Guest Services for a nominal fee.  
 Tasting Seminars are only for Guests 18 and older.



**1820 SOCIETY: SMOOTHIE TIME**  
 Cove Cafe, Deck 9, Midship - 5:15 pm  
 Join us for some smoothies.

## CRAFTS: TILE COASTERS

*O'Gills Pub, Deck 3, Forward* - 4:15 pm  
 Join your Cruise Staff and create a fun souvenir for you to keep.

## 90'S MUSIC TRIVIA

*O'Gills Pub, Deck 3, Forward* - 7:45 pm  
 "If you Wannabe" the winner, then join us as we test your 90's music knowledge.

## MAJORITY RULES

*Fatboms, Deck 3, Forward* - 10:15 pm  
 Join your Club Host, to find out who really rules!



## MATCH YOUR MATE

*Fatboms, Deck 3, Forward* - 10:45 pm  
 It's time to play everyone's favorite couples game show, Match Your Mate!

# FUN FOR ALL AGES HIGHLIGHTS



## GOOD MORNING DISNEY MAGIC

Tune in to channel 24-2 as your Cruise Director highlights the upcoming events and activities for the day.



## ANNA'S CHOCOLATE CHASE SCAVENGER HUNT

Follow Anna's clues as they lead you around the ship to solve today's riddles. Be sure to go hunting between 9:00 am and 11:00 pm and fill in your answers on your answer sheet!



## FAMILY MOVIE FUN TIME: INSIDE OUT - (PG)

*Buena Vista Theatre, Deck 5, Aft* - 8:15 am  
 Come join us for a special opportunity to enjoy Inside Out in the Buena Vista Theatre. We will leave some lights on and turn the volume down as audience members are welcome to talk, leave their seats, move about and (most importantly) have fun!

## INTERDENOMINATIONAL SERVICE

*Keys, Deck 3, Forward* - 9:00 am  
 A quiet space is reserved for those Guests wishing to conduct their own service.

## WHO AM I?

*Promenade Lounge, Deck 3, Aft* - 3:00 pm  
 Join your Cruise Staff in a fun and hilarious game where our panel has to guess who they are.

## PICTIONARY CHALLENGE

*Promenade Lounge, Deck 3, Aft* - 3:30 pm  
 Join your Cruise Staff for this exciting game of fast draw.

## DISNEY VACATION CLUB GROUP PREVIEW

*D Lounge, Deck 4, Midship* - 5:00 pm  
 Want to learn more about taking magical vacations year after year? Please see a Disney Vacation Club representative on Deck 4, Midship, or call 7-2805 from your stateroom phone for more information about our interactive group presentation.



## OFFICER PIN TRADING

*Preludes, Deck 4, Forward* - 7:30 pm  
 Come trade pins with the Officers of the Disney Magic.



## WHO WANTS TO BE A MOUSEKETEER?

*D Lounge, Deck 4, Midship* - 7:45 pm & 10:00 pm  
 Your chance to get into the "hot seat" and win limited edition prizes. Or, play along as part of our live studio audience.



## CLUB D DANCE PARTY

*D Lounge, Deck 4, Midship* - 10:45 pm  
 Join your Cruise Staff as we turn D Lounge into an electrifying family nightclub. Club D, where everyone is a VIP!

# SAFETY ASHORE INFORMATION

While you will find many great experiences ashore, please remain vigilant about your personal safety and the safety of your belongings. As in any large urban tourist destination, you'll want to take some basic precautions to make the most of your time ashore.

- Be aware of your surroundings at all times. Avoid short cuts, narrow alleys and poorly lit streets.
- Avoid wandering from the main shopping and tourist areas into unfamiliar territory. If venturing out independently, have a plan, use only licensed taxi operators.
- Identity/Credit Card theft can occur anywhere. Please remain vigilant in monitoring the safe keeping of your personal information.
- Leave valuables in your room safe and avoid carrying large amounts of cash. Exercise caution when using ATMs. Cameras and handbags should be carried close to your body or concealed out of sight.
- Leave air transportation tickets and other travel documents in your room safe. When going ashore, each adult is required to carry a Driver's license, passport or other government-issued photo ID. Note: Some ports may require guests to carry passports ashore.
- Minor crimes are easier to commit in dark unlit areas. When going ashore at night, please be extra vigilant about your personal safety.

## ANNA'S CHOCOLATE CHASE SCAVENGER HUNT RIDDLES

*Disney Magic* - 9:00 am - 11:00 pm

- Clue 1** - On Deck 4 before the show, if you would like a snack or a drink, here's the place to go.
- Clue 2** - Sing and play - this family lounge is really funky - or dance the night away "like a chicken with the face of a monkey."
- Clue 3** - On Deck 3, in this tiny café, you can connect with friends across the fjord at any time of day!
- Clue 4** - This dining place is black and white, and changes color throughout the night!
- Clue 5** - You'll need this clue to continue the game. Look for the pictures in the frames!



These are your 5 Clues for today.  
 Look for your next 4 Clues in tomorrow's Navigator.

# YOUTH ACTIVITIES HIGHLIGHTS

## DINE & PLAY

As a convenience for families dining at 8:45 pm, our Youth Activities Counselors will be available at 9:45 pm at the entrance of Lumiere's, Carioca's and Animator's Palate to bring registered children to join the fun in Disney's Oceaneer Club and Disney's Oceaneer Lab.



Deck 5, Aft (7-5864)

8:00 am - 11:00 pm

Infants and Toddlers can enjoy toys and activities at It's a small world nursery. Reservations are first come, first served so please stop by!



Deck 5, Midship (7-1439)

(3-12 years old)

11:00 am - 12:00 pm

### BECOME IRON MAN!

10:45 pm

Do you want to be Iron Man? Marvel's Avengers Academy invites you to virtually suit up in Iron Man's armor for an exciting interactive training gauntlet.

### GAME CHALLENGE

11:00 pm

Come have some fun with these classic games.



Deck 5, Midship (7-1445)

(3-12 years old)

8:00 am - 11:00 pm

### PINATA PARTY

5:00 pm

It's time to celebrate with decorations, gift giving, and a whole fun and crazy party in the Oceaneer Lab!

### GOOFY FILES

7:30 pm

This fascinating activity takes you into the invisible world of forensics where you will discover different ways to identify the suspect of a crime.



Deck 9, Midship (7-5816)

(11-14 years old)

10:00 am - 1:00 am

### SPORTS DECK FUN

4:00 pm

Take over the Sports Deck with some fun and friendly competition.

### ANIMATION ANTICS

9:00 pm

Learn simple animation techniques and then put your new skills to use by drawing some of your favorite Disney Characters.



Deck 10, Midship (7-18517)

(14-17 years old)

11:00 am - 2:00 am

### T-SHIRT MAKING

12:00 pm

Let's get creative! Design your own T-shirt during this crafty time.

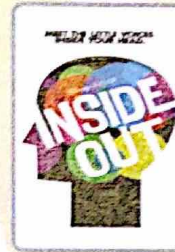
### GHOST VOYAGERS

12:00 am

Come learn about these mysterious waters and the friendly spirits that might inhabit them.

# BUENA VISTA THEATRE

Deck 5, Aft  
Today's Movies

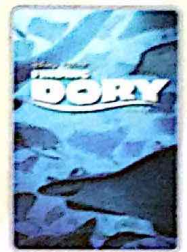


Family Fun Movie

8:15 am  
Duration:  
1 hr 42 mins  
Rating: PG



10:30 am  
Duration:  
1 hr 46 mins  
Rating: PG



12:45 pm & 10:45 pm  
Duration:  
1 hr 45 mins  
Rating: PG

DOLBY 3D



DOLBY 3D

3:00 pm  
Duration:  
1 hr 55 mins  
Rating: PG



6:00 pm & 8:30 pm  
Duration:  
1 hr 45 mins  
Rating: PG



### FAMILY VARIETY ACT

Featuring the Comedy and Juggling of Pete Matthews, as he entertains the entire family in this fun-filled show.

Fathoms,  
Deck 3, Forward  
7:45 pm



### ADULT GAME SHOW

It's time to play everyone's favorite couple's game show, Match your Mate!

Fathoms (18+),  
Deck 3, Forward  
10:45 pm

### YOUTH ACTIVITIES OPEN HOUSE

Open House is an opportunity for all to come and participate in a variety of exciting activities and free time in the Oceaneer Club, Oceaneer Lab, it's a small world nursery, Vibe and Edge throughout the cruise. During these times secured programming will still be offered in the other venue for those looking to check their children into care.

Edge: 10:00 am - 11:00 am & 7:30 pm - 9:00 pm

Vibe: 11:00 am - 12:00 pm & 6:00 pm - 7:30 pm

Disney's Oceaneer Club: 11:00 am - 2:00 pm & 5:00 pm - 7:00 pm

Disney's Oceaneer Lab: 2:00 pm - 4:00 pm

# MORE TO ENJOY WHILE ONBOARD

## NEW FALL 2017 ITINERARIES

Set sail in fall 2017 and discover exciting new destinations on sailings departing from New York, Texas, California, and Port Canaveral! Visit the Disney Vacation Planning Desk, Deck 4, Midship for more information. Disney Vacation Planning tends to get busy on the last day of sailing. Don't miss the opportunity to plan your next Disney vacation.



## DISNEY VACATION CLUB® GROUP PREVIEW

Want to learn more about taking magical vacations year after year? Please see a Disney Vacation Club representative on Deck 4, Midship, or call 7-2805 from your stateroom phone for more information about our interactive group presentation.



## PORT SHOPPING INFORMATION

Meet Michael, your Port Shopping Guide at the Port Shopping Desk, Deck 3, Midship between 7:30 pm - 8:30 pm. Find out about all the amazing shopping available to you in our ports of call this cruise. Michael will help you find that once in a life time keepsake to commemorate your cruise vacation.



**SENSES**  
SPA & SALON

**SALON  
TASTER  
SPECIAL**

- Scalp Massage
- European Facial
- Hand Treatment
- Sunglow Makeover
- Conditioning Hair Treatment
- Eye Collagen Treatment
- Foot & Ankle Massage
- Neck & Shoulder Massage

Three for \$99.00  
Five for \$119.00  
All Eight for \$139.00

Senses Spa & Salon, Deck 9, Forward, Extension 7-1465



Don't forget to add the 2016  
Norway Pin to your  
collection!  
Mickey's Mainsail

Deck 4, Forward

**Shutters**

**GET THE  
PICTURE!**

Ask a friendly photographer about Get the Picture! and the incredible value of an unlimited digital photo package, which includes all of your stateroom's photos. Visit Shutters today, as supplies are limited.

\*Terms and conditions apply. Photos captured on your vacation are only available for purchase during this cruise.

## Connect @ Sea

We are now offering a NEW and improved Internet service to stay connected on your cruise like no other in the industry! Internet packages range from \$0.25 per MB - \$89.00 (1000 MB package). For more information contact your Connect@Sea Expert or Guest Services onboard. Possible service interruptions due to area configuration.

## INTERNET CONNECTIVITY IN GEIRANGER

Please be advised that due to our geographic position today in Geiranger there will be no internet satellite connectivity. TV and phones are most likely to be affected as well.

## TAXI SERVICES IN COPENHAGEN

Kindly note that due to the EID celebration next week and with another ship in port, there will VERY limited taxis available on July 6th in Copenhagen. We highly recommend to book your bus transfer to the airport at the Guest Services Desk, Deck 3, Midship, by 12:00 pm on Monday July 4th.



Our Port Adventures is the best way to discover Geiranger, home to Geirangerfjord! One of the most spectacular scenery in the world, a UNESCO World Heritage Site. Geiranger is a small tourist village in the western part of Norway. What's your adventure? Visit the Port Adventure's Desk, Deck 3, Midship with any questions!

## SHOPPING

### OFFICER PIN TRADING

Come and trade pins with the Officers of the Disney Magic Cruise Ship at 7:30 pm in Preludes, Deck 4, Forward.

### NORWEGIAN KNITWEAR

Stay warm with genuine Norwegian made knitwear adorned with beautiful Nordic designs and patterns. Find these and other Norwegian gifts and souvenirs when you visit Sea Treasures, Deck 3, Forward.

### SOPHIA FIORI DISNEY INSPIRED JEWELRY

Add the finishing touch to your evening look with one of the many sparkling diamond jewelry pieces from Sophia Fiori, including elegant jewelry featuring classic Disney icons. White Caps, Deck 4, Forward.

### COLLECT YOUR DISNEY CRUISE LINE MEMORIES

Store the many happy memories you've photographed while on your Disney cruise inside a 2016 Disney Cruise Line photo album available in Mickey's Mainsail, Deck 4, Forward.

### HELPFUL SHOPPING TIP

Don't have time to drop off your souvenirs at your stateroom before dinner or a show? For your convenience, Disney Cruise Line merchandise locations can hold your purchased items for up to 24 hours while you enjoy the other Disney Cruise Line experiences you don't want to miss out on. Mickey's Mainsail and White Caps, Deck 4, Forward.

### FINDING DORY MERCHANDISE

Don't forget to swim over to Mickey's Mainsail to pick up specially themed Finding Dory merchandise. Deck 4, Forward.

Due to port regulations, when the ship is docked, the stores will remain closed.

## IMPORTANT INFORMATION

### Security Notice

All Guests, including Children who wish to disembark or explore the ship are required to present their Key to the World card at the gangway. A passport is also required for all Guests wishing to go ashore. Guests under the age of 18 are required to have a parent, guardian or other responsible adult sign an authorization form at the Guest Service Desk if they wish to go ashore unaccompanied or with any adult from another stateroom.

### Insect Repellent Advisory

Protection against mosquito bites and related illnesses when going ashore. Insect repellent is available for purchase in White Caps. When using both sunscreen and insect repellent, use sunscreen first and apply insect repellent on top of sunscreen.

### Cold and Flu Reminder

Please wash hands frequently and thoroughly, particularly before meals. Contact the Health Center by dialing 7-1923, should anyone in your party become ill.

### Inclement Weather

For the safety of all Guests, outdoor events may be changed due to unforeseen weather conditions.

### Corridor Quiet Hours

As a courtesy to all our Guests, please recognize quiet hallway hours from 10:00 p.m. til 8:00 a.m.

### Environmental Message

With Disney's commitment to the Environment please refrain from throwing anything over the Ship's side. Thank you.

### No Reserved Seats Policy

As a courtesy to all Guests we kindly advise that the saving of seats is not permitted in the Walt Disney Theatre, and the saving of the sun loungers is not permitted on Deck 9 and 10. Items left unattended will be returned to lost and found at Guest Services, Deck 3, Midship.

### Smoking

For the comfort of our guests, the following areas are designated as smoking areas:  
• Deck 9 Forward, Port Side  
• Deck 4, Starboard Side from 6:00 p.m. to 6:00 a.m. only (all of Deck 4 is non-smoking from 6:00 a.m. to 6:00 p.m.)  
Smoking is prohibited inside all guest staterooms and on stateroom verandahs. Guests found smoking in their staterooms or on their verandahs will be charged a \$250 stateroom recovery fee.

### Walt Disney Theatre

Theatrical performances may use artificial fog, strobe lights, pyrotechnics and other special effects. For the safety of our performers and the comfort of those around you, the use of any photography or video recording device or any electronic equipment is prohibited.

### Verandah Safety

Please do not leave any combustible materials on your balcony when not present in your stateroom for safety reasons.

Morning	8:30	8:45	9:00	9:15	9:30	9:45	10:00	10:15	10:30	10:45	11:00	11:15	11:30	11:45	12:00	12:15	12:30	12:45	1:00	1:15	1:30	
FUNNEL VISION	Robin Hood (G) Funnel Vision						Ratatouille (G) Funnel Vision						WALL-E (G) Funnel Vision									
BUENA VISTA THEATRE	Family Movie Fun Time: Inside Out (PG) Duration: 1 Hour 42 Minutes -Starts at 8:15 am						The Jungle Book (2016) (PG) Duration: 1 Hour 46 Minutes						Finding Dory (PG) <b>DOLBY 3D</b> Duration: 1 Hour 45 Minutes									
CHARACTERS																						
FUN FOR ALL AGES	Interdenominational Service Keys (Guest Led)						Youth Activities Open House ☺ Edge						Youth Activities Open House ☺ Vibe						Crafts: 3D Crafts O'Gills Pub			
ADULTS	Friends of Bill W. Keys						Complimentary Footprint Analysis Senses Spa & Salon						Pathway To Yoga Senses Spa Fitness Center									
VIBE 16-17 YEARS OLD							Youth Activities Open House ☺						T-Shirt Making						Xbox Challenge			
EDGE 11-14 YEARS OLD							Youth Activities Open House ☺						Craft Corner						Scattergories			
OCEANEER LAB 3-12 YEARS OLD	Pool Stretches		Go Fetch		Pictionary		Game Challenge		Animation Antics		Game Challenge		Face Paint Time		Lunch		Bingo					
OCEANEER CLUB 3-12 YEARS OLD							Youth Activities Open House ☺						Become Iron Man! ☺						Bingo ☺			

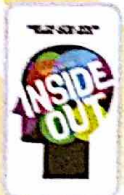
Afternoon	1:45	2:00	2:15	2:30	2:45	3:00	3:15	3:30	3:45	4:00	4:15	4:30	4:45	5:00	5:15	5:30	5:45	6:00	6:15	6:30	6:45			
FUNNEL VISION	Mulan (G) Funnel Vision						Cinderella (Classic) (G) Funnel Vision																	
BUENA VISTA THEATRE							The BFG (PG) <b>DOLBY 3D</b> Duration: 1 Hour 55 Minutes						Finding Dory (PG) Duration: 1 Hour 45 Minutes											
CHARACTERS																			Chip & Dale DK4 Mid (S)	Pluto DK4 Mid (S)				
FUN FOR ALL AGES	Xbox Challenge O'Gills Pub			Who Am I? Promenade Lounge			Pictionary Challenge Promenade Lounge			Walk A Mile Preludes			Toddler Time Promenade Lounge			Disney Vacation Club D Lounge - Group Preview			Live Piano with Olga Altkhova Lobby Atrium					
ADULTS	GAGA Ball ☺ Disney's Oceaneer Lab						Anyone Can Cook ☺ Disney's Oceaneer Lab						Live Piano with Bernadett Bihari Promenade Lounge						1820 Society: Smoothie Time Cove Cafe			Classic Jazz with Fine Whines Keys		
VIBE 14-17 YEARS OLD	Xbox Challenge: Scavenger Hunt						Sports Deck Fun						Ninja						Smoothie Hour			Youth Activities Open House ☺		
EDGE 11-14 YEARS OLD	Brain Teasers						Scavenger Hunt						Sports Deck Fun						Game Challenge			Smoothie Time		
OCEANEER LAB 3-12 YEARS OLD	Bingo		Youth Activities Open House ☺				Animation Cells				Pinata Party				Dinner									
OCEANEER CLUB 3-12 YEARS OLD	Open House		Parachute Games		Glow Jam		Face Paint Time				Youth Activities Open House ☺				The Royal Ball ☺		Memory Wall ☺							

Evening	7:00	7:15	7:30	7:45	8:00	8:15	8:30	8:45	9:00	9:15	9:30	9:45	10:00	10:15	10:30	10:45	11:00	11:15	11:30	11:45	12:00			
FUNNEL VISION	Pixar Short Films (PG) Funnel Vision						The Mighty Ducks (PG) Funnel Vision						Cool Runnings (PG) Funnel Vision											
BUENA VISTA THEATRE							Finding Dory (PG) Duration: 1 Hour 45 Minutes						Finding Dory (PG) <b>DOLBY 3D</b> Duration: 1 Hour 45 Minutes											
CHARACTERS			Mickey DK4 Mid (S)		Minnie DK4 Mid (S)				Mickey DK4 Mid (S)		Minnie DK4 Mid (S)				Donald DK5 Mid (S)		Pluto DK5 Mid (S)		Donald DK5 Mid (S)		Daisy DK5 Mid (S)			
FUN FOR ALL AGES	Officer Pin Trading Preludes																							
ADULTS	Who Wants to be a Mouseketeer? D Lounge						UEFA Euro 2016: France vs. Iceland Promenade Lounge (Subject to satellite availability)																	
ADULTS	90's Music Trivia O'Gills Pub						Live Piano with Bernadett Bihari Keys						Cruise Staff DJ Fathoms			Majority Rules Fathoms						Cruise Staff DJ Fathoms		
VIBE 14-17 YEARS OLD	Open House ☺		Teen Choice				Gender Wars				Animation Antics				Mix and Match									
EDGE 11-14 YEARS OLD	Smoothie Time		Youth Activities Open House ☺				Animation Antics				Gender Wars				Talent Show				Party In Paradise					
OCEANEER LAB 3-12 YEARS OLD	Create a Postcard		Goofy Files				Hula Hoop Jam				Who Wants To Be A Mouseketeer				Talent Show									
OCEANEER CLUB 3-12 YEARS OLD	4 Square Competition				Nemo's Coral Reef Adventure				Color Yourself Heroic				GAGA Ball		Camp Out		Game Challenge							
																			Become Iron Man!					

SUNDAY, JULY 3, 2016 - GEIRANGER, NORWAY

# BUENA VISTA THEATRE

Deck 5, Aft



Family Fun Movie

DOLBY 3D

DOLBY 3D

8:15 am Duration: 1 hr 42 mins Rating: PG	10:30 am Duration: 1 hr 46 mins Rating: PG	12:45 pm & 10:45 pm Duration: 1 hr 45 mins Rating: PG	3:00 pm Duration: 1 hr 55 mins Rating: PG	5:00 pm Duration: 1 hr 45 mins Rating: PG	6:00 pm & 8:30 pm Duration: 1 hr 45 mins Rating: PG
--	---	---	--	--	---

## Character Appearances

**CHIP & DALE**  
DK4 Mid (S) - 5:30 pm

**DONALD DUCK**  
DK5 Mid (S)  
7:45 pm & 9:45 pm

**PLUTO**  
DK4 Mid (S) - 6:00 pm  
DK5 Mid (S) - 8:15 pm

**MINNIE MOUSE**  
DK4 Mid (S)  
8:15 pm & 10:15 pm

**MICKEY MOUSE**  
DK4 Mid (S)  
7:45 pm & 9:45 pm

**DAISY DUCK**  
DK5 Mid (S) - 10:15 pm



(P) - Portside, (S) - Starboard Side

Don't forget your Camera to capture those Magical Moments!  
Check here each day for Character appearances.  
For detailed Character appearance information  
see the Character Information Board in the Lobby Atrium.  
Meet-and-Greets will be advertised for the length of time the line will be open. To avoid disappointment, please meet at start time of appearances.

## SHIP DIRECTORY

### YOUTH ACTIVITIES

DISNEY'S OCEANEER CLUB	DECK 5, MID	11:00 AM - 12:00 AM
DISNEY'S OCEANEER LAB	DECK 5, MID	8:00 AM - 11:00 PM
EDGE	DECK 9, MID	10:00 AM - 1:00 AM
IT'S A SMALL WORLD NURSERY	DECK 5, AFT	8:00 AM - 11:00 PM
VIBE	DECK 10, MID	11:00 AM - 2:00 AM

### POOLS

\*Children under 12 years of age must have adult supervision in all pools.

AQUADUNK	DECK 10, MID	2:00 PM - 7:00 PM
AQUALAB	DECK 9, AFT	10:00 AM - 8:00 PM
GOOBY'S POOL	DECK 9, MID	10:00 AM - 8:00 PM
NECHWAS' SPLASH ZONE	DECK 9, AFT	11:00 AM - 6:00 PM
QUIET COVE POOL (18+)	DECK 9, FWD	8:00 AM - 11:00 PM
TWIST 'N' SCOUT	DECK 9, AFT	2:00 PM - 8:00 PM

Please note, "selfie sticks" are not permitted in the pools or on the slides.  
Complimentary pool vests are available for children to use in the pools onboard.  
They are located on the pool deck.

### RECREATION

PORT ADVENTURES DESK	DECK 3, MID	7:30 AM - 10:00 AM
		7:00 PM - 8:30 PM
SENSES FITNESS CENTER (18+)	DECK 9, FWD	6:00 AM - 10:00 PM
WIDE WORLD OF SPORTS DECK	DECK 10, FWD	24 HOURS

### GENERAL INFORMATION

BUENA VISTA THEATRE	DECK 5, AFT	SHOWTIMES
CONNECT@SEA DESK	DECK 3, AFT	8:00 AM - 10:00 AM
		4:00 PM - 6:00 PM
		7:00 PM - 10:00 PM
DISNEY VACATION CLUB DESK	DECK 4, MID	6:00 PM - 10:00 PM
DISNEY VACATION PLANNING DESK	DECK 4, MID	8:00 AM - 9:00 AM
		4:00 PM - 10:00 PM
FUNNEL VISION	DECK 9, MID	SHOWTIMES
GUEST SERVICES	DECK 3, MID	24 HOURS
HAIR BRAIDING	DECK 9, MID	
MEDICAL HEALTH CENTER	DECK 1, FWD	9:30 AM - 11:00 AM
		4:30 PM - 7:00 PM
PORT SHOPPING DESK	DECK 3, MID	11:00 AM - 12:00 PM
		7:30 PM - 8:30 PM
PRELUDES	DECK 4, FWD	5:30 PM - 9:00 PM
SENSES SPA AND SALON	DECK 9, FWD	8:00 AM - 10:00 PM
SHUTTERS PHOTO GALLERY	DECK 4, AFT	5:30 PM - 11:00 PM
WALT DISNEY THEATRE	DECK 4, FWD	SHOWTIMES

### SHOPPING

BIBBIDI BOBBIDI BOUTIQUE	DECK 10, FWD	12:00 PM - 10:00 PM
MICKEY'S MAINSAIL	DECK 4, FWD	5:30 PM - 12:00 AM
QUACKS	DECK 9, MID	
SEA TREASURES	DECK 3, FWD	5:30 PM - 12:00 AM
VISTA GALLERY	DECK 4, MID	6:00 PM - 11:00 PM
WHITE CAPS	DECK 4, FWD	5:30 PM - 12:00 AM

### IMPORTANT NUMBERS

Fire/Security: 7-3001  
Medical EMERGENCY: 7-3000  
Health Center: 7-1923

<b>DINNER MENU</b>	Animator's Palate : Captains Gala	Bay Breeze (Alcoholic)	<b>WEATHER FORECAST</b>	
	Caricava's : Captains Gala	Parrot Song (Non-Alcoholic)		Today: Chance of Showers High: 60°F/16°C
	Lumiere's : Captains Gala			Tomorrow: Chance of Showers High: 58°F/14°C

Evening Attire: Semi Formal

## DINING & LOUNGES

### BREAKFAST

CABANAS	DECK 9, AFT	6:30 AM - 11:00 AM
DAISY'S DE LITES	DECK 9, AFT	6:00 AM - 8:30 AM
LUMIERE'S (A-LA CARTE)	DECK 3, MID	7:30 AM - 9:00 AM

### LUNCH

CABANAS	DECK 9, AFT	11:45 AM - 2:00 PM
DAISY'S DE LITES	DECK 9, AFT	11:00 AM - 6:00 PM
LUMIERE'S (A-LA CARTE)	DECK 3, MID	12:00 PM - 1:30 PM
PETE'S BOILER BITES	DECK 9, AFT	11:00 AM - 6:00 PM
PINOCCHIO'S PIZZERIA	DECK 9, MID	11:00 AM - 6:00 PM

### DINNER

ANIMATOR'S PALATE	DECK 4, AFT	6:00 PM & 8:30 PM
CABANAS TABLE SERVICE	DECK 9, AFT	6:30 PM - 8:30 PM
CARIOCA'S	DECK 3, AFT	6:00 PM & 8:30 PM
LUMIERE'S	DECK 3, MID	6:00 PM & 8:30 PM
PALO (18+) FOR RESERVATIONS CALL 1-884-4	DECK 10, AFT	6:00 PM - 8:30 PM
PETE'S BOILER BITES	DECK 9, AFT	6:00 PM - 10:00 PM

### LATE NIGHT SHACKS

O'GILLS PUB (18+)	DECK 3, FWD	10:45 PM - 11:45 PM
PINOCCHIO'S PIZZERIA	DECK 9, MID	9:30 PM - 12:00 AM
PROMENADE LOUNGE	DECK 3, AFT	10:45 PM - 11:45 PM

### ADDED FEATURES

EYE SCREAM	DECK 9, AFT	11:00 AM - 11:00 PM
BEVERAGE STATION	DECK 9, AFT	24 HOURS
ROOM SERVICE	DIAL 7-4330	24 HOURS

### ENTERTAINMENT - LOUNGES - BARS

Adults must be 21 and older to consume alcoholic beverages.

AFTER HOURS	DECK 3, FWD	(AFTER 9:00 PM. ADULTS ONLY)
COVE CAFE (18+)	DECK 9, MID	6:30 AM - 12:00 AM
D LOUNGE	DECK 4, MID	SHOWTIMES
FATHOMS (18+)	DECK 3, FWD	7:00 PM - 2:00 AM
FROZONE TREATS	DECK 9, AFT	2:00 PM - 6:00 PM
KEYS (18+)	DECK 3, FWD	6:00 PM - 12:30 AM
O'GILLS PUB (18+)	DECK 3, FWD	4:00 PM - 12:30 AM
PRELUDES	DECK 4, FWD	5:30 PM - 9:00 PM
PROMENADE LOUNGE	DECK 3, AFT	8:00 AM - 12:00 AM
PINOCCHIO'S PIZZERIA	DECK 9, MID	10:30 AM - 12:00 AM
SIGNALS (18+)	DECK 9, FWD	12:00 PM - 8:00 PM

Public Health Advisory: Consuming raw or undercooked meats, poultry, seafood, shellfish, or eggs may increase your risk for foodborne illness, especially if you have certain medical conditions.

All Ashore: Approx 8:30 am  
All Aboard: 4:45 pm

Ship's Agent In Geiranger

Director Ship Agency  
Capt. Morten Kinn, European Cruise Service AS  
Strandgaten 197, P.O. Box 1926, 5817 Bergen, Norway  
T: +47 5590 0780; Mobile: +47 9826 8285