

# PERSONAL NAVIGATOR



Sunrise: 4:22 am Sunset: 10:36 pm  
Evening Attire: Formal

Today: Partly Cloudy High: 56°F/13°C  
Tomorrow: Partly Cloudy High: 56°F/13°C

THURSDAY, JUNE 30, 2016

DAY AT SEA

## TWICE CHARMED

AN ORIGINAL TWIST ON THE CINDERELLA STORY

STEP BACK IN TIME TO EXPERIENCE THE STORY OF CINDERELLA IN A MAGICAL NEW WAY. ENJOY THIS MAGNIFICENT MUSICAL PRODUCTION WITH YOUR FAVORITE CHARACTERS - AND A FEW NEW ONES!

WALT DISNEY THEATRE

Deck 4, Forward

6:30 pm & 8:45 pm

As a courtesy to all Guests, we kindly advise that the saving of seats is **not** permitted in the Walt Disney Theatre.



Assistance available at the entrance to the Walt Disney Theatre 30 minutes prior to show time.


## Disney MAGIC Fun Facts

Tonnage: 84,000  
Length Overall: 984 Feet  
Ship's Registry: *The Bahamas*

### Important Dates

Keel Laid: *October 31, 1996*  
Launch Date: *April 12, 1997*  
Inaugural Cruise: *July 30, 1998*

- \* The Magic was built by a process called Jumboisation (in 2 separate sections) in Italy at the Fincantieri Maghera Shipyard (stern) and the Fincantieri Ancona Shipyard (bow). The joint of the ship is just in front of Lumiere's.
- \* The anchor of the Disney Magic weighs 28,200 lbs (12,802.8kg) - the same weight as three elephants.
- \* Over 50 nationalities make up the 960 Crew Members on board.
- \* Sorcerer Mickey stands proudly 10 ft tall on the bow of the ship. There are other characters in the artwork around him.
- \* Goofy hangs 20 ft tall, painting the finishing touches on the stern.



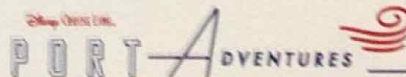
### CAPTAIN'S RECEPTION

Enjoy an exclusive photo with Captain Andy & meet some of the ships officers.  
With live music provided by Fine Whines.

Lobby Atrium,  
Deck 3, Midship,  
5:30 pm & 7:45 pm

## Don't Miss:

- Good Morning Disney Magic**  
Tune in to channel 24-2 as your Cruise Director highlights the upcoming events and activities for the day.
- Stavanger & Alesund: Velkommen Til Norge (Welcome to Norway)**  
*Walt Disney Theatre, Deck 4, Forward - 10:00 am*  
Join Port Historian Marvin Slind for a look at the country we will be visiting over the next week, and discover some of the special characteristics of this northern region: foods, beverages, cultural and social customs, as well as Norway's role in the modern world.
- Geiranger and Bergen: In the Heart of Norway's Fjord Country featuring Marvin Slind**  
*Walt Disney Theatre, Deck 4, Forward - 2:50 pm*  
We will be passing some of the most spectacular and beautiful scenery in the world in western Norway's fjord country. Geiranger lies at the head of one of the most majestic fjords in Norway, and our visit there will bring us views of breathtaking scenery. Farther south, Bergen is a modern seaport, and serves as one of the key economic centers of western Norway.
- Match Your Mate (18+)**  
*Fathoms, Deck 3, Forward - 10:30 pm*  
It's time to play everyone's favorite couples game show, Match Your Mate!



Stop by the Port Adventures Desk, located on Deck 3, Midship, where our friendly team will assist you to plan your adventure to our ports of call!

## DINNER MENU

Animator's Palate : Pacific Rim Cuisine  
Carioca's : South American Cuisine  
Lumiere's : French Cuisine

## DRINK OF THE DAY

Deep Blue Sea (Alcoholic)  
Mango Crush (Non-Alcoholic)

### IMPORTANT NUMBERS

Fire/Security: 7-3001  
Medical Emergency: 7-3000  
Health Center: 7-1923



# ADULT ACTIVITY HIGHLIGHTS

## SENSES SPA FITNESS CLASSES & SEMINARS

- Yin Yang Stretch* - Senses Spa Fitness Center - 7:00 am
- Pub 101* - Senses Spa Fitness Center - 7:30 am
- Body Sculpt Boot Camp* (Norm. Fee) - Senses Spa Fitness Center - 8:00 am
- Group Pilating* (Sign-Up Required) - Senses Spa Fitness Center - 9:00 am
- Complimentary Footprint Analysis* - Senses Spa & Salon - 10:00 am
- Introduction to Acupuncture* - Senses Spa & Salon - 10:15 am
- Ear Vibrate to Weigh Less* - Senses Spa & Salon - 11:00 am
- How to Increase Your Metabolism* - Senses Spa & Salon - 12:00 pm
- Acupuncture for Pain Relief* - Senses Spa & Salon - 1:15 pm
- Seminar: Improving Your Posture-Walk in Comfort* - Senses Spa & Salon - 2:00 pm
- Pathways to Yoga* - Senses Spa Fitness Center - 4:00 pm
- Acupuncture Demonstration* - Senses Spa & Salon - 4:15 pm
- Complimentary Footprint Analysis* - Senses Spa & Salon - 5:00 pm



## TASTING CLASSES

- Sierra to Sierra Wine Tasting* (18+) - Keys - 12:15 pm
  - Tomita & Margarita Tasting* (18+) - Keys - 4:00 pm
  - Whiskey Tasting* (18+) - Cove Cafe - 10:30 pm
- Please make reservations for tastings at Guest Services for a nominal fee. Tasting Seminars are only for Guests 18 and older.

## 1820 SOCIETY: LUNCH

*Lumiere's, Deck 3, Midship - 12:00 pm*  
Get to know your fellow Society members over lunch.



## 1820 SOCIETY: XBOX KINECT CHALLENGE

*O'Gills Pub, Deck 3, Forward - 5:30 pm*  
Take on the challenge in this fun active computer game.

## AIR OF THE THEME SHOW TOUR

*Pub, Deck 10, Aft - 9:45 am*  
Join us for a guided tour highlighting the design, Imagineering and artistry of the Disney Magic. This tour is reserved for Guests 18 and over.

## ANYONE CAN COOK: LOBSTER RAVIOLI

*D Lounge, Deck 4, Midship - 10:30 am*  
From our galley to yours. Join our chefs as they show you how to prepare delicious dishes. Today's Menu - Lobster Ravioli



## MOVIE QUOTES TRIVIA

*O'Gills Pub, Deck 3, Forward - 1:15 pm*  
"Life is like a box of Chocolates" Know the movie? Join your Cruise Staff and test your Movie Quote knowledge.

## PUB QUIZ

*O'Gills Pub, Deck 3, Forward - 7:45 pm*  
Join us as we test your knowledge against your fellow Guests at our Pub Quiz challenge.



# FUN FOR ALL AGES HIGHLIGHTS



## GOOD MORNING DISNEY MAGIC

Tune in to channel 24-2 as your Cruise Director highlights the upcoming events and activities for the day.



## FAMILY MOVIE FUN TIME: ZOOTOPIA - (PG)

*Buena Vista Theatre, Deck 5, Aft - 8:15 am*  
Come join us for a special opportunity to enjoy *Zootopia* in the Buena Vista Theatre. We will leave some lights on and turn the volume down as audience members are welcome to talk, leave their seats, move about and (most importantly) have fun!

## WAKE UP WITH DISNEY JUNIOR

*D Lounge, Deck 4, Midship - 8:30 am*  
What happens when you experience unlimited fun with your favorite Disney Junior shows? You get an exciting dance party designed especially for preschoolers ages seven and under.



## JACK-JACK'S INCREDIBLE DIAPER DASH

*Lobby Atrium, Deck 3, Midship - 11:30 am*  
Calling all baby cruisers! It's time to take to the sea to see who's the fastest crawler of the seven seas! Register your baby 15 minutes prior to the big race.



## SENSES SPA BINGO

*Bingo Pre-Sales start at 11:45 pm*  
*Fathoms, Deck 3, Forward - 12:00 pm*  
Four CASH prizes to be won! Plus great spa prizes that will pamper you, including a mini facial and massages all courtesy of the Senses Spa and Salon. *Seating now!* Pre-Sales start 15 minutes prior to game.



## DISNEY VACATION CLUB GROUP PREVIEW

*D Lounge, Deck 4, Midship - 12:15 pm & 4:30 pm*  
Want to learn more about taking magical vacations year after year? Please see a Disney Vacation Club representative on Deck 4, Midship, or call 7-2865 from your stateroom phone for more information about our interactive group presentation.



## \$5,000 MEGA JACKPOT BINGO

*Bingo Pre-Sales start at 3:30 pm*  
*Fathoms, Deck 3, Forward - 3:45 pm*  
Don't miss your chance to take home big money! 4 CASH prize games and great raffle prizes to be won! Complete the fourth game in 46 numbers or less and win the \$5,000 Mega Jackpot! PLUS a chance to win a pair of Sophia Fiori Midnight Sapphire Stud Earrings! Pre-Sales start 15 minutes prior to game.



## FORMAL NIGHT AFTER PARTY

*D Lounge, Deck 4, Midship - 10:00 pm*  
Join your Cruise Staff as we continue the party, with special appearances from the world famous Disney Characters.





# YOUTH ACTIVITIES HIGHLIGHTS

## DINE & PLAY

As a convenience for families dining at 8:45 pm., our Youth Activities Counselors will be available at 9:45 pm. at the entrance of Lumiere's, Carkowak and Animator's Palate to bring registered children to join the fun in Disney's Oceaneer Club and Disney's Oceaneer Lab.



Deck 5, Aft (7-5804)

9:00 am - 11:00 pm

Infants and Toddlers can enjoy toys and activities at It's a small world nursery. Reservations are first come, first served so please stop by!



Deck 5, Midship (7-1439)  
(3-12 years old)

9:00 am - 10:00 pm

### MICKEY'S PUZZLE PLAYTIME

Come and play with Mickey & friends as they share their favorite games, puzzles and dances!

### THE ROYAL BALL

Attend your own Royal Ball and learn to be a prince or a princess.



Deck 5, Midship (7-1445)  
(3-12 years old)

9:00 am - 12:00 am

### SUPER SLOPPY SCIENCE

Join Professor Make-O-Mess in some of the most extreme experiments you will ever see in the world of Super Sloppy Science!

### MONSTROPOLIS MOST WANTED

Have fun while you look for clues, play puzzle games, and find out which monster stole the children's door.



Deck 9, Midship (7-5816)  
(11-14 years old)

10:00 am - 12:30 am

### GOOFY'S WORLD RECORDS

Compete in the Goofy-est games ever! Goofy and his pals have created a variety of games and contests for a wild time.

### BRAINS AND BRAWNS

You will compete against each other to solve clues, take part in physical challenges, and reach the finish first.



Deck 10, Midship (7-18517)  
(14-17 years old)

10:30 am - 1:00 am

### ZOMBIFIED

A big movie producer is looking for zombies to help him film the finale to his latest masterpiece, Zombified.

### THAT'S HILARIOUS

Ever wanted to show off your comedy skills? Then be a part of the cast for the crazy improv show "That's Hilarious" and put on a live show for your friends.

# BUENA VISTA THEATRE

Deck 5, Aft  
Today's Movies



Family Fun Movie

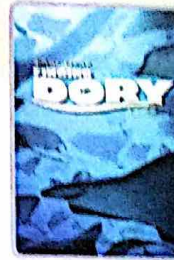
8:15 am  
Duration:  
1 hr 48 mins  
Rating: PG



10:30 am  
Duration:  
1 hr 45 mins  
Rating: PG

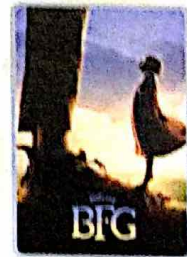


2:30 pm  
Duration:  
1 hr 48 mins  
Rating: PG



DOLBY 3D

5:30 pm & 8:15 pm  
Duration:  
1 hr 45 mins  
Rating: PG



Movie Premiere

10:30 pm  
Duration:  
1 hr 55 mins  
Rating: PG



## FAMILY VARIETY ACT

Featuring the Comedy and Magic of Danny Buckler, in this fun for all the family cabaret show.

Fathoms,  
Deck 3, Forward  
2:00 pm &  
7:45 pm (Repeat Show)



## ADULT GAME SHOW

It's time to play everyone's favorite couple's game show, Match your Mate!

Fathoms (18+),  
Deck 3, Forward  
10:30 pm

## YOUTH ACTIVITIES OPEN HOUSE

Open House is an opportunity for all to come and participate in a variety of exciting activities and free time in the Oceaneer Club, Oceaneer Lab, It's a small world nursery, Vibe and Edge throughout the cruise. During these times secured programming will still be offered in the other venue for those looking to check their children into care.

Edge: 10:00 am - 11:00 am & 6:00 pm - 7:30 pm

Vibe: 11:00 am - 12:00 pm & 7:30 pm - 9:00 pm

Disney's Oceaneer Club: 9:00 am - 10:00 am & 6:00 pm - 7:00 pm

Disney's Oceaneer Lab: 7:00 pm - 9:00 pm



# MORE TO ENJOY WHILE ONBOARD

## EASTERN CARIBBEAN

Disney Cruise Line offers a variety of sailings to exotic ports in the Caribbean, including port of Tortola, in the British Virgin Islands. Most voyages even include a stop at Disney Castaway Cay. Visit the Disney Vacation Planning desk, Deck 4, Midship, for more information. Disney Vacation Planning tends to get busy on the last day of sailing. Don't miss the opportunity to plan your next Disney vacation.



## DISNEY VACATION CLUB® GROUP PREVIEW

Want to learn more about taking magical vacations year after year? Please see a Disney Vacation Club representative on Deck 4, Midship, or call 7-2805 from your stateroom phone for more information about our interactive group presentation.



## PORT SHOPPING INFORMATION

Join your Port Shopping Guide, Michael, to learn about the incredible shopping ashore in Norway this cruise, everything from t-shirts to designer fashion, souvenirs to hand blown glass and so much more. Learn the best ways to get around Norway, where to go, and how to find the best deals on what you're looking for. Port Shopping Talk, Buena Vista Theatre, Deck 5, Aft - 1:00 pm



## Connect @ Sea

We are now offering a NEW and improved Internet service to stay connected on your cruise like no other in the industry! Internet packages range from \$0.25 per MB - \$89.00 (1000 MB package). For more information contact your Connect@Sea Expert or Guest Services onboard. Possible service interruptions due to area configuration.

## CURRENCY EXCHANGE

Credit/debit cards are widely accepted & preferred in European ports of call, however, Norwegian Krone will also be available for exchange at Guest Services, Deck 3, Midship. Please check with Guest Services for further information.

## TRANSPORTATION INFORMATION

Should you wish to purchase transportation to the Copenhagen airport, kindly proceed to Guest Services on Deck 3, Midship for further assistance.



## SENSES ONBOARD ACUPUNCTURE SPA & SALON

Naturally effective for pain, arthritis, sea sickness, stress, digestion, weight loss, and much more. Let us help you enjoy your magical cruise and beyond.

1 session for \$150, 3 sessions for \$360

Senses Spa & Salon, Deck 9, Forward, Extension 7-1465

## Disney Cruise Line PORT ADVENTURES

What's your next adventure? Ask your friendly Port Adventures team about options for the upcoming ports of call. Don't forget to plan early for your exclusive Port Adventures. Stop by the Port Adventures Desk on Deck 3, Midship where our friendly team will assist you.

## SHOPPING

### NORWEGIAN FJORDS MERCHANDISE

Visit Sea Treasures for merchandise commemorating your Norwegian Fjords sailing including souvenirs, accessories and traditional apparel. Deck 3, Forward.

### BALTIC AMBER

Don't miss 'The Ancient Gold of the North' with guest speaker Miss Lian Jones. Discover a colorful journey from its pre-historic origins, including the story of the St. Petersburg Amber Room and how to spot real amber from fake amber. Today at 1:00 pm in Fathoms, Deck 3, Forward.

### BIBBIDI BOBBIDI BOUTIQUE

Young Princesses and Princes can get ready for a formal evening with a makeover at the Bibbidi Bobbidi Boutique. Make your reservations by visiting Bibbidi Bobbidi Boutique, Deck 10, Forward, Port Side, or dialing extension 7-1492. Limited space available.

### INNOVATIVE DESIGNS BY CITIZEN WATCHES

It starts with a simple, yet revolutionary concept: a watch that never needs a battery. Citizen Eco-Drive technology harnesses the power of light from any natural or artificial light source and converts to energy. See the Collection of Men's and Ladies' watches available in White Caps, Deck 4, Forward.

### THE LIFE AND WORK OF CARL FABERGÉ

Take part in a special presentation, Court jeweler to the last Tsars of Russia, with guest speaker Miss Lian Jones. Today at 5:00 pm in O'Gills Pub, Deck 3, Forward.

### ROMERO BRITTO ART AT THE VISTA GALLERY

Discover the fun and colorful art pieces in the Vista Gallery featuring some of your favorite Disney characters by celebrated artist Romero Britto. Visit the Vista Gallery today and ask a merchandise host/hostess for details on how you can purchase and take home any of these inspiring art pieces! Deck 4, Midship.

## DISNEY INSPIRED DIAMOND COLLECTION

by SOPHIA FIORI

AVAILABLE AT WHITE CAPS DECK 4 FORWARD



## Shutters

## SAY CHEESE

Your family is dressed up and ready to enjoy the evening.

Capture the memories in your formal attire by visiting our professional portraiture studios in the Lobby Atrium, Deck 3, Midship, from

5:15 pm - 6:15 pm, 7:15 pm - 8:30 pm, and 9:30 pm - 10:15 pm.

\*Offer available per stateroom; terms and conditions apply

## IMPORTANT INFORMATION

### Security Notice

All Guests (including Children) who wish to disembark or embark the ship are required to present their Key to the World card in the gangway. A photo ID is also required for those Guests who are 18 years of age or older. Guests under the age of 18 are required to have a parent, guardian or other responsible adult sign an authorization form at the Guest Service Desk if they wish to go ashore (unaccompanied or with any adult from another stateroom).

### Insect Repellent Advisory

Protect against mosquito bites and related illnesses when going ashore. Insect repellent is available for purchase in White Caps. When using both sunscreen and insect repellent, use sunscreen first and apply insect repellent on top of sunscreen.

### Cold and Flu Reminder

Please wash hands frequently and thoroughly, particularly before meals. Contact the Health Center by dialing 7-1923, should anyone in your party become ill.

### Inclement Weather

For the safety of all Guests, outdoor events may be changed due to unforeseen weather conditions.

### Corridor Quiet Hours

As a courtesy to all our Guests, please recognize quiet hallway hours from 10:00 pm to 8:00 a.m.

### Environmental Message

With Disney's commitment to the Environment please refrain from throwing anything over the Ship's side. Thank you.

### No Reserved Seats Policy

As a courtesy to all Guests we kindly advise that the saving of seats is not permitted in the Walt Disney Theatre, and the saving of the sun loungers is not permitted on Deck 9 and 10. Items left unattended will be returned to lost and found at Guest Services, Deck 3, Midship.

### Smoking

For the comfort of our guests, the following areas are designated as smoking areas:  
• Deck 9 Forward, Port Side  
• Deck 4, Starboard Side from 6:00 pm to 6:00 a.m. only (all of Deck 4 is non-smoking from 6:00 a.m. to 6:00 p.m.)  
Smoking is prohibited inside all guest staterooms and on stateroom verandahs. Guests found smoking in their staterooms or on their verandahs will be charged a \$250 stateroom recovery fee.

### Walt Disney Theatre

Theatrical performances may use artificial fog, smoke lights, pyrotechnics and other special effects. For the safety of our performers and the comfort of those around you, the use of any photography or video recording device or any electronic equipment is prohibited.

### Verandah Safety

Please do not leave any combustible materials on your balconies when not present in your stateroom for safety reasons.



Morning	8:30	8:45	9:00	9:15	9:30	9:45	10:00	10:15	10:30	10:45	11:00	11:15	11:30	11:45	12:00	12:15	12:30	12:45	1:00	1:15	1:30			
FUNNEL VISION	Sleeping Beauty (G) Funnel Vision						Cinderella (Classic) (G) Funnel Vision						Star Wars: Rebels (G) Funnel Vision			Toy Story (G) Funnel Vision								
BUENA VISTA THEATRE	Family Movie Fun Time: Zootopia (PG) Duration: 1 Hour 48 Minutes <Starts at 8:15 am												Finding Dory (PG) Duration: 1 Hour 45 Minutes						Port Shopping Talk Buena Vista Theatre					
CHARACTERS	Jake DK4 Mid (S)						Sofia DK4 Mid (S)						Chip & Dale Lobby Atrium (P)			Daisy Lobby Atrium (P)								
FUN FOR ALL AGES	Disney Junior D Lounge			Disney Trivia Promenade Lounge			Animation: Mickey Mouse Promenade Lounge			Velkommen Til Norge (Welcome to Norway) Walt Disney Theatre			Crafts: Door Hangers Promenade Lounge			Bingo Pre-Sales			Senses Spa Jackpot BINGO Fathoms			Amber Trunk Show Fathoms		
ADULTS	Friends of Bill W. Keys			Disney Vacation Club Members Celebration Fathoms			Art of The Theme Show Tour Palo			Animation: Goofy Promenade Lounge			Gameshow: The Wheel Promenade Lounge			Jack-Jack's Diaper Dash Lobby Atrium			Disney Vacation Club Group Preview D Lounge			Port Shopping Talk Buena Vista Theatre		
ADULTS	Group Cycling Senses Spa Fitness Center			Disney Vacation Club Members Celebration Fathoms			Art of The Theme Show Tour Palo			ANTHONY CAR COON D Lounge - Lobster Ravioli			Walk A Mile Preludes			1820 Society: Lunch Lumiere's			Cruisin' Solo Lunch Lumiere's			Movie Quotes Trivia O'Gills Pub		
YIBE	Coffee Break						Youth Activities Open House						Ice Breakers			Marshmallow Olympics								
EDGE	Youth Activities Open House						Goofy's World Records						GAGA Ball			Around the World in 7 days								
OCEANEER LAB	Animation Antics						Game Challenge			Parachute Games			Super Sloppy Science			Marshmallow Olympics			Lunch					
OCEANEER CLUB	Youth Activities Open House						Pre-School Fun (3-5 Years Old)			Memory Wall			Toy Story Boot Camp			Picture This								
OCEANEER CLUB	Little Einstein's Adventure						Explore the Club			Mickey's Puzzle Playtime														

Afternoon	1:45	2:00	2:15	2:30	2:45	3:00	3:15	3:30	3:45	4:00	4:15	4:30	4:45	5:00	5:15	5:30	5:45	6:00	6:15	6:30	6:45			
FUNNEL VISION	The Jungle Book (Classic) (G) Funnel Vision						Snow White and the Seven Dwarfs (G) Funnel Vision						Hercules (G) Funnel Vision											
BUENA VISTA THEATRE	Alice Through the Looking Glass (PG) Duration: 1 Hour 48 Minutes												Finding Dory (PG) <b>DOLBY 3D</b> Duration: 1 Hour 45 Minutes											
CHARACTERS	Sofia DK4 Mid (S)						Jake DK4 Mid (S)						Donald Preludes			Chip & Dale Preludes			Goofy DK4 Mid (S)					
CHARACTERS													Pluto DK4 Mid (S)											
FUN FOR ALL AGES	The Comedy & Magic of <b>DANNY BUCKLER</b> Fathoms			Geiranger and Bergen featuring Marvin Slind Walt Disney Theatre			Bingo Pre-Sales			\$5,000 MEGA Jackpot BINGO Fathoms			Disney Vacation Club D Lounge - Group Preview			Captain's Welcome Reception Lobby Atrium			<b>TWICE CHARMED</b> Walt Disney Theatre					
FUN FOR ALL AGES	Game Show: The Feud Promenade Lounge			Disney Tunes Trivia Promenade Lounge			The Ultimate Quest Promenade Lounge			Toddler Time Promenade Lounge			Live Violin with Olga Altkhova Promenade Lounge											
ADULTS	Animation: Mickey Mouse O'Gills Pub			Animation: Goofy O'Gills Pub			70's Music Trivia O'Gills Pub			Disney Animation O'Gills Pub			Cruisin' Solo Gathering Cove Cafe			Faberge Presentation O'Gills Pub			1820 Society: Xbox Challenge O'Gills Pub					
ADULTS	Zombified						Smoothie Hour						Scavenger Hunt			Game Challenge								
EDGE	Ninja						Brains and Brawns						Marshmallow Olympics			Youth Activities Open House								
OCEANEER LAB	Monstropolis Most Wanted						Anyone Can Cook			Game Challenge			Magic Show			Elephant Soccer			Relay Games			Dinner		
OCEANEER CLUB	Mouseketeer Training						Become Iron Man!			Craft Corner			Aladdin's Fun Adventures			Youth Activities Open House			Become Iron Man!					

Evening	7:00	7:15	7:30	7:45	8:00	8:15	8:30	8:45	9:00	9:15	9:30	9:45	10:00	10:15	10:30	10:45	11:00	11:15	11:30	11:45	12:00			
FUNNEL VISION	Pinocchio (G) Funnel Vision						Adventures in Babysitting (G) Funnel Vision						Enchanted (PG) Funnel Vision											
BUENA VISTA THEATRE	Finding Dory (PG) <b>DOLBY 3D</b> Duration: 1 Hour 45 Minutes												Movie PremEAR: The BFG (PG) Duration: 1 Hour 55 Minutes (Doors open at 10:15 pm)											
CHARACTERS	Minnie DK4 Mid (S)						Mickey DK4 Mid (S)						Minnie DK4 Mid (S)			Daisy Preludes			Donald DK4 Mid (S)					
CHARACTERS	Donald Preludes						Pluto Preludes						Donald Preludes			Mickey DK4 Mid (S)								
FUN FOR ALL AGES	Variety: Danny Buckler Fathoms			Captain's Welcome Reception Lobby Atrium			<b>TWICE CHARMED</b> Walt Disney Theatre			Formal Night After Party D Lounge			Family Superstar Karaoke D Lounge			Movie PremEAR: The BFG (PG) <b>DOLBY 3D</b> Walt Disney Theatre (Doors open at 10:15 pm)								
FUN FOR ALL AGES	Disney Trivia D Lounge			UEFA Euro 2016: Poland vs. Portugal Promenade Lounge (Subject to satellite availability)																				
ADULTS	The Gothard Sisters LIVE: Pub Quiz O'Gills Pub			The Gothard Sisters LIVE O'Gills Pub			Classic Jazz with Fine Whines Fathoms			MATE Fathoms			Cruise Staff DJ Fathoms											
ADULTS	Live Piano with Aileen de la Cruz Keys			Live Piano with Bernadett Bihari Keys			The Gothard Sisters LIVE O'Gills Pub																	
YIBE	Game Challenge			Youth Activities Open House			Pump It Up			Wii Challenge			That's Hilarious			Gender Wars								
EDGE	Open House			Smoothie Time			Magic Show			Disney Cruise Line Trivia			That's Hilarious			Gender Wars								
OCEANEER LAB	Youth Activities Open House						4 Square Competition			Scavenger Hunt			Chill			Capture the Flag								
OCEANEER LAB	Piston Cup Challenge			Wii Challenge																				
OCEANEER CLUB	Picture This			The Royal Ball			Playmation			Disney's Oceaneer Club Closes at 10:00 pm														

Symbol for activities that will be repeated during the cruise

FOLD

FOLD

FOLD

FOLD

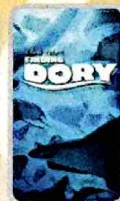
YOUTH ACTIVITIES OPEN HOUSE  
A non-secured program with activities for families, adults and children of all ages to enjoy together.



THURSDAY, JUNE 30, 2016 - DAY AT SEA

## BUENA VISTA THEATRE

Deck 5, Aft



Family Fun Movie

DOLBY 3D

Movie Premier

8:15 am	10:30 am	2:30 pm	5:30 pm & 8:15 pm	10:30 pm
Duration: 1 hr 48 mins	Duration: 1 hr 45 mins	Duration: 1 hr 48 mins	Duration: 1 hr 45 mins	Duration: 1 hr 55 mins
Rating: PG	Rating: PG	Rating: PG	Rating: PG	Rating: PG

## Character Appearances

**JAKE - THE NEVERLAND PIRATE**  
DK4 Mid (S)  
9:00 am & 3:00 pm

**PRINCESS SOFIA**  
DK4 Mid (S)  
9:30 am & 2:30 pm

**CHIP & DALE**  
Lobby Atrium (P) - 12:00 pm  
Preludes - 5:45 pm

**DAISY DUCK**  
Lobby Atrium (P) - 12:30 pm  
Preludes - 10:15 pm

**DONALD DUCK**  
Preludes - 5:15 pm,  
7:45 pm & 9:45 pm

**GOOFY**  
DK4 Mid (S) - 5:30 pm

**PLUTO**  
DK4 Mid (S) - 6:00 pm  
Preludes - 8:15 pm

**MINNIE MOUSE**  
DK4 Mid (S)  
7:45 pm & 9:45 pm

**MICKEY MOUSE**  
DK4 Mid (S)  
8:15 pm & 10:15 pm



(P) - Portside, (S) - Starboard Side

Don't forget your Camera to capture those Magical Moments!  
Check here each day for Character appearances.  
For detailed Character appearance information  
see the Character Information Board in the Lobby Atrium.  
Meet-and-Greets will be advertised for the length of time the line will be open. To avoid disappointment, please meet at start time of appearances.

## SHIP DIRECTORY

## YOUTH ACTIVITIES

DISNEY'S OCEANEER CLUB	DECK 5, MID	9:00 AM - 10:00 PM
DISNEY'S OCEANEER LAB	DECK 5, MID	9:00 AM - 12:00 AM
EDGE	DECK 9, MID	10:00 AM - 12:30 AM
IT'S A SMALL WORLD NURSERY	DECK 5, AFT	9:00 AM - 11:00 PM
VIBE	DECK 10, MID	10:30 AM - 1:00 AM

## POOLS

\*Children under 12 years of age must have adult supervision in all pools.

AQUADUNK	DECK 10, MID	10:30 AM - 11:45 AM	12:05 PM - 7:00 PM
AQUALAB	DECK 9, AFT	10:00 AM - 8:00 PM	
GOOFY'S POOL	DECK 9, MID	10:00 AM - 8:00 PM	
NEPHEWS' SPLASH ZONE	DECK 9, AFT	10:00 AM - 6:00 PM	
QUIET COVE POOL (18+)	DECK 9, FWD	8:00 AM - 11:00 PM	
TWIST 'N' SPOUT	DECK 9, AFT	10:30 AM - 8:00 PM	

Please note, "selfie sticks" are not permitted in the pools or on the slides.  
Complimentary pool vests are available for children to use in the pools onboard.  
They are located on the pool deck.

## RECREATION

PORT ADVENTURES DESK	DECK 3, MID	9:00 AM - 5:00 PM	7:00 PM - 8:30 PM
SENSES FITNESS CENTER (18+)	DECK 9, FWD	6:00 AM - 10:00 PM	
WIDE WORLD OF SPORTS DECK	DECK 10, FWD	24 HOURS	

## GENERAL INFORMATION

BUENA VISTA THEATRE	DECK 5, AFT	SHOWTIMES
CONNECT@SEA DESK	DECK 3, AFT	9:00 AM - 12:00 PM 1:00 PM - 4:00 PM 7:00 PM - 10:00 PM
DISNEY VACATION CLUB DESK	DECK 4, MID	10:30 AM - 11:30 AM 1:30 PM - 3:30 PM 5:30 PM - 10:00 PM
DISNEY VACATION PLANNING	DECK 4, MID	9:00 AM - 11:30 AM 3:00 PM - 10:00 PM
FUNNEL VISION	DECK 9, MID	SHOWTIMES
GUEST SERVICES	DECK 3, MID	24 HOURS
HAIR BRADING	DECK 9, MID	10:00 AM - 12:00 PM 1:00 PM - 7:00 PM
MEDICAL HEALTH CENTER	DECK 1, FWD	9:30 AM - 11:00 AM 4:30 PM - 7:00 PM
PORT SHOPPING DESK	DECK 3, MID	7:30 PM - 8:30 PM
PRELUDES	DECK 4, FWD	5:30 PM - 9:00 PM
SENSES SPA AND SALON	DECK 9, FWD	8:00 AM - 10:00 PM
SHUTTERS PHOTO GALLERY	DECK 4, AFT	10:00 AM - 10:00 PM
WALT DISNEY THEATRE	DECK 4, FWD	SHOWTIMES

## SHOPPING

BIBBIDI BOBBIDI BOUTIQUE	DECK 10, FWD	9:00 AM - 9:00 PM
MICKEY'S MAINSAIL	DECK 4, FWD	9:30 AM - 11:00 PM
QUACKS	DECK 9, MID	
SEA TREASURES	DECK 3, FWD	9:30 AM - 11:00 PM
VISTA GALLERY	DECK 4, MID	12:00 PM - 2:30 PM 5:30 PM - 11:00 PM
WHITE CAPS	DECK 4, FWD	9:30 AM - 11:00 PM

DINNER MENU	Animator's Palate - Pacific Rim Cuisine	Drinky Blue Sea (Alcoholic)	Weather Forecast
	Carioca's - South American Cuisine	Mango Crush (Non-Alcoholic)	High: 50°F/13°C
	Lumiere's - French Cuisine		Low: 50°F/13°C
Evening Attire: Formal			

## DINING &amp; LOUNGES

## BREAKFAST

CABANAS	DECK 9, AFT	7:30 AM - 11:30 AM
DAISY'S DE LITES	DECK 9, AFT	7:00 AM - 9:00 AM
LUMIERE'S (À-LA CARTE)	DECK 3, MID	8:30 AM - 10:00 AM

## LUNCH

CABANAS	DECK 9, AFT	11:45 AM - 2:30 PM
DAISY'S DE LITES	DECK 9, AFT	11:00 AM - 6:00 PM
LUMIERE'S (À-LA CARTE)	DECK 3, MID	12:00 PM - 1:30 PM
PALO BRUNCH (18+) (CALL 7-6943)	DECK 10, AFT	10:00 AM - 12:30 PM
PETE'S BOILER BITES	DECK 9, AFT	11:00 AM - 6:00 PM
PINOCCHIO'S PIZZERIA	DECK 9, MID	11:00 AM - 6:00 PM

## DINNER

ANIMATOR'S PALATE	DECK 4, AFT	6:00 PM & 8:30 PM
CABANAS TABLE SERVICE	DECK 9, AFT	6:30 PM - 8:30 PM
CARIOCA'S	DECK 3, AFT	6:00 PM & 8:30 PM
LUMIERE'S	DECK 3, MID	6:00 PM & 8:30 PM
PALO (18+) (FOR RESERVATIONS CALL 7-6943)	DECK 10, AFT	6:00 PM - 8:30 PM
PETE'S BOILER BITES	DECK 9, AFT	6:00 PM - 10:00 PM

## LATE NIGHT SHACKS

O'GILLS PUB	DECK 3, FWD	10:45 PM - 11:45 PM
PINOCCHIO'S PIZZERIA	DECK 9, MID	9:30 PM - 12:00 AM
PROMENADE LOUNGE	DECK 3, AFT	10:45 PM - 11:45 PM

## ADDED FEATURES

EYE SCREAM	DECK 9, AFT	11:00 AM - 11:00 PM
BEVERAGE STATION	DECK 9, AFT	24 HOURS
ROOM SERVICE	DIAL 7-4330	24 HOURS

## ENTERTAINMENT - LOUNGES - BARS

Adults must be 21 and older to consume alcoholic beverages.

AFTER HOURS	DECK 3, FWD	(AFTER 9:00 PM, ADULTS ONLY)
COVE CAFE (18+)	DECK 9, MID	6:30 AM - 12:00 AM
D LOUNGE	DECK 4, MID	SHOWTIMES
FATHOMS (18+)	DECK 3, FWD	7:00 PM - 2:00 AM
FROZONE TREATS	DECK 9, AFT	11:30 AM - 6:00 PM
KEYS (18+)	DECK 3, FWD	6:00 PM - 12:30 AM
O'GILLS PUB (18+)	DECK 3, FWD	12:00 PM - 12:30 AM
PRELUDES	DECK 4, FWD	5:30 PM - 9:00 PM
PROMENADE LOUNGE	DECK 3, AFT	8:00 AM - 12:00 AM
PINOCCHIO'S PIZZERIA	DECK 9, MID	10:00 AM - 12:00 AM
SIGNALS (18+)	DECK 9, FWD	10:30 AM - 8:00 AM

Public Health Advisory: Consuming raw or undercooked meats, poultry, seafood, shellfish, or eggs may increase your risk for foodborne illness, especially if you have certain medical condition.

## IMPORTANT NUMBERS

First Aid	7-001
Medical Emergency	7-000
Health Center	7-023