

PERSONAL NAVIGATOR

THURSDAY, JULY 7, 2016

Sunrise: 5:47 am Sunset: 10:34 pm
Evening Attire: Formal

Today: Partly Cloudy High: 60°F/16°C
Tomorrow: Partly Cloudy High: 58°F/14°C

DAY AT SEA

TWICE CHARMED

AN ORIGINAL TWIST ON THE CINDERELLA STORY

STEP BACK IN TIME TO EXPERIENCE THE STORY OF CINDERELLA IN A MAGICAL NEW WAY. ENJOY THIS MAGNIFICENT MUSICAL PRODUCTION WITH YOUR FAVORITE CHARACTERS - AND A FEW NEW ONES!

WALT DISNEY THEATRE

Deck 4, Forward

6:30 pm & 8:45 pm

As a courtesy to all Guests, we kindly advise that the saving of seats is **not** permitted in the Walt Disney Theatre.



Assistance available at the entrance to the Walt Disney Theatre 30 minutes prior to show time.



Disney MAGIC Fun Facts

Tonnage: 84,000

Length Overall: 984 Feet

Ship's Registry: The Bahamas

Important Dates

Keel Laid: October 31, 1996

Launch Date: April 12, 1997

Inaugural Cruise: July 30, 1998

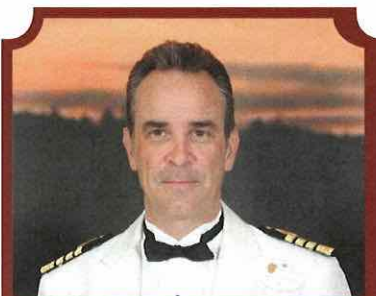
• The Magic was built by a process called Jumboisation (in 2 separate sections) in Italy at the Fincantieri Maghera Shipyard (stern) and the Fincantieri Ancona Shipyard (bow). The joint of the ship is just in front of Lumiere's.

• The anchor of the Disney Magic weighs 28,200 lbs (12,802.8kg) - the same weight as three elephants.

• Over 50 nationalities make up the 960 Crew Members on board.

• Sorcerer Mickey stands proudly 10 ft tall on the bow of the ship. There are other characters in the artwork around him.

• Goofy hangs 20 ft tall, painting the finishing touches on the stern.



CAPTAIN'S RECEPTION

Enjoy an exclusive photo with Captain Marco & meet some of the ships officers.
With live music provided by Fine Whines.

Lobby Atrium,
Deck 3, Midship,
5:30 pm & 7:45 pm

Don't Miss:

Good Morning Disney Magic

Tune in to channel 24-2 as your Cruise Director highlights the upcoming events and activities for the day.

Tallinn: Northern Stronghold of the Hanseatic League featuring William Doonan

Walt Disney Theatre, Deck 4, Forward - 10:30 am
From Teutonic Knights to occupation to independence, we'll explore the capital of Europe's least religious country, with archaeologist and Port Historian William Doonan, Ph.D.

St. Petersburg: Peter Romanov's Window on the West featuring William Doonan

Walt Disney Theatre, Deck 4, Forward - 2:30 pm
Walk in the footsteps of the Tsars and learn what made Peter the Great "great", with archaeologist and Port Historian William Doonan, Ph.D.

Family Variety: Hector is Magic!

Fathoms, Deck 3, Forward - 7:45 pm
Featuring the Modern Magic & Illusion of Hector is Magic!, as he entertains the entire family in this fun-filled show.



Stop by the Port Adventures Desk, located on Deck 3, Midship, where our friendly team will assist you to plan your adventure to our ports of call!

DINNER MENU

Animator's Palate : Pacific Rim Cuisine
Carioca's : South American Cuisine
Lumiere's : French Cuisine

DRINK OF THE DAY

Sunken Treasure (Alcoholic)
Mango Crush (Non-Alcoholic)

IMPORTANT NUMBERS

Fire/Security: 7-3001
Medical Emergency: 7-3000
Health Center: 7-1923

ADULT ACTIVITY HIGHLIGHTS

SENSES SPA FITNESS CLASSES & SEMINARS

Sunrise Stretch - Senses Spa Fitness Center - 7:00 am
Fab Abs - Senses Spa Fitness Center - 7:30 am
Body Sculpt Boot Camp (Nom. Fee) - Senses Spa Fitness Center - 8:00 am
Group Cycling (Sign-Up Required) - Senses Spa Fitness Center - 9:00 am
Complimentary Footprint Analysis - Senses Spa & Salon - 9:00 am & 5:00 pm
Introduction to Acupuncture - Senses Spa Fitness Center - 10:15 am
Eat More to Weigh Less - Senses Spa Fitness Center - 11:00 am
How to Increase Your Metabolism - Senses Spa & Salon - 12:00 pm
Acupuncture Pain Relief - Senses Spa Fitness Center - 1:15 pm
Seminar: Improving Your Posture-Walk in Comfort - Senses Spa & Salon - 2:00 pm
Pathway To Yoga - Senses Spa Fitness Center - 4:00 pm
Acupuncture Demonstration - Senses Spa Fitness Center - 4:15 pm

TASTING CLASSES

Stem to Stern Wine Tasting (18+) - Keys - 12:15 pm
Beer Tasting (18+) - Keys - 1:45 pm
Martini Tasting (18+) - Keys - 3:15 pm
Whiskey Tasting (18+) - Cove Cafe - 10:30 pm
 Please make reservations for tastings at Guest Services for a nominal fee.
 Tasting Seminars are only for Guests 18 and older.



1820 SOCIETY: LUNCH

Lumiere's, Deck 3, Midship - 12:00 pm
 Get to know your fellow Society members over lunch.

1820 SOCIETY: XBOX KINECT CHALLENGE

O'Gills Pub, Deck 3, Forward - 5:30 pm
 Take on the challenge in this fun active computer game.



ANYONE CAN COOK: LOBSTER RAVIOLI

D Lounge, Deck 4, Midship - 10:30 am
 From our galley to yours. Join our chefs as they show you how to prepare delicious dishes. Today's Menu - Lobster Ravioli.

MOVIE QUOTES TRIVIA

O'Gills Pub, Deck 3, Forward - 1:15 pm
 "Life is like a box of Chocolates" Know the movie? Join your Cruise Staff and test your Movie Quote knowledge.

PUB QUIZ

O'Gills Pub, Deck 3, Forward - 7:45 pm
 Join us as we test your knowledge against your fellow Guests at our Pub Quiz challenge.

ICE BREAKERS

Fathoms, Deck 3, Forward - 10:15 pm
 Join you Club Host for a night full of unpredictable fun.



FUN FOR ALL AGES HIGHLIGHTS



GOOD MORNING DISNEY MAGIC

Tune in to channel 24-2 as your Cruise Director highlights the upcoming events and activities for the day.



FAMILY MOVIE FUN TIME: ZOOTOPIA - (PG)

Buena Vista Theatre, Deck 5, Aft - 8:15 am
 Come join us for a special opportunity to enjoy Zootopia in the Buena Vista Theatre. We will leave some lights on and turn the volume down as audience members are welcome to talk, leave their seats, move about and (most importantly) have fun!

WAKE UP WITH DISNEY JUNIOR

D Lounge, Deck 4, Midship - 8:30 am
 What happens when you experience unlimited fun with your favorite Disney Junior shows? You get an exciting dance party designed especially for preschoolers ages seven and under.



JACK-JACK'S INCREDIBLE DIAPER DASH

Lobby Atrium, Deck 3, Midship - 11:30 am
 Calling all baby cruisers! It's time to take to the mat to see who's the fastest crawler of the seven seas! Register your baby 15 minutes prior to the big race.

BIG X \$500 SENSES SPA BINGO

Bingo Pre-Sales start at 11:45 am
Fathoms, Deck 3, Forward - 12:00 pm
 Four CASH prizes to be won! Plus great spa prizes that will pamper you, including a mini facial and massages all courtesy of the Senses Spa and Salon. Walk home with \$500 should you cover the big X pattern in 20 numbers or less on the fourth game. Serenity now! Pre-Sales start 15 minutes prior to game.



DISNEY VACATION CLUB GROUP PREVIEW

D Lounge, Deck 4, Midship - 12:15 pm & 4:30 pm
 Want to learn more about taking magical vacations year after year? Please see a Disney Vacation Club representative on Deck 4, Midship, or call 7-2805 from your stateroom phone for more information about our interactive group presentation.



\$5,000 MEGA JACKPOT BINGO

Bingo Pre-Sales start at 3:30 pm
Fathoms, Deck 3, Forward - 3:45 pm
 Don't miss your chance to take home big money! 4 CASH prize games and great raffle prizes to be won! Complete the fourth game in 46 numbers or less and win the \$5,000 Mega Jackpot! Pre-Sales start 15 minutes prior to game.



THE ULTIMATE QUEST

Promenade Lounge, Deck 3, Aft - 4:00 pm
 Join us for this fast-paced scavenger hunt throughout the ship. Don't forget to bring your wave phones!



FAMILY VARIETY: HECTOR IS MAGIC!

Fathoms, Deck 3, Forward - 7:45 pm
 Featuring the Modern Magic & Illusion of Hector is Magic!, as he entertains the entire family in this fun-filled show.

FORMAL NIGHT AFTER PARTY

D Lounge, Deck 4, Midship - 10:00 pm
 Join your Cruise Staff as we continue the party, with special appearances from the world famous Disney Characters.

YOUTH ACTIVITIES HIGHLIGHTS

DINE & PLAY

As a convenience for families dining at 8:45 p.m., our Youth Activities Counselors will be available at 9:45 p.m. at the entrance of Lumiere's, Carioca's and Animator's Palate to bring registered children to join the fun in Disney's Oceaneer Club and Disney's Oceaneer Lab.



Deck 5, Aft (7-5864)

9:00 am - 11:00 pm

Infants and Toddlers can enjoy toys and activities at It's a small world nursery. Reservations are first come, first served so please stop by!



Deck 5, Midship (7-1439)
(3-12 years old)

9:00 am - 10:00 pm

MICKEY'S PUZZLE PLAYTIME

10:30 am

Come and play with Mickey & friends as they share their favorite games, puzzles and dances!

MOUSEKETEER TRAINING

2:00 pm

Take part in training exercises to become an Official Mouseketeer.



Deck 5, Midship (7-1445)
(3-12 years old)

9:00 am - 12:00 am

SUPER SLOPPY SCIENCE

11:15 am

Join Professor Make-O-Mess in some of the most extreme experiments you will ever see in the world of Super Sloppy Science!

MONSTROPOLIS MOST WANTED

1:45 pm

Have fun while you look for clues, play puzzle games, and find out which monster stole the children's door.



Deck 9, Midship (7-5816)
(11-14 years old)

10:00 am - 12:30 am

GOOFY'S WORLD RECORDS

11:15 am

Compete in the Goofy-est games ever! Goofy and his pals have created a variety of games and contests for a wild time.

BRAINS AND BRAUNS

3:00 pm

You will compete against each other to solve clues, take part in physical challenges, and reach the finish first.



Deck 10, Midship (7-18517)
(14-17 years old)

10:30 am - 1:00 am

ZOMBIFIED

2:00 pm

A big movie producer is looking for zombies to help him film the finale to his latest masterpiece, Zombified.

THAT'S HILARIOUS

10:45 pm

Ever wanted to show off your comedy skills? Then be a part of the cast for the crazy improv show "That's Hilarious" and put on a live show for your friends.

BUENA VISTA THEATRE

Deck 5, Aft
Today's Movies



Family Fun Movie

8:15 am

Duration: 1 hr 48 mins

Rating: PG

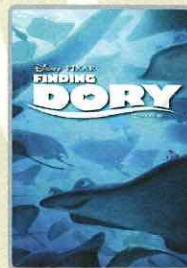


OC Open Captioning

2:30 pm

Duration: 1 hr 48 mins

Rating: PG



DOLBY 3D

5:30 pm & 8:15 pm

Duration: 1 hr 45 mins

Rating: PG



10:30 pm

Duration: 1 hr 55 mins

Rating: PG



FAMILY VARIETY ACT

Featuring the
Comedy and Magic of
Danny Buckler, in this fun for
all the family cabaret show.

Walt Disney Theatre,
Deck 4, Forward

1:00 pm

(Doors open at 12:45 pm)



ADULT GAME SHOW

It's time to play
everyone's favorite couple's
game show,
Match your Mate!

Fathoms (18+),
Deck 3, Forward
10:30 pm

YOUTH ACTIVITIES OPEN HOUSE

Open House is an opportunity for all to come and participate in a variety of exciting activities and free time in the Oceaneer Club, Oceaneer Lab, it's a small world nursery, Vibe and Edge throughout the cruise. During these times secured programming will still be offered in the other venue for those looking to check their children into care.

Edge: 10:00 am - 11:00 am & 6:00 pm - 7:30 pm

Vibe: 11:00 am - 12:00 pm & 7:30 pm - 9:00 pm

Disney's Oceaneer Club: 9:00 am - 10:00 am & 6:00 pm - 7:00 pm

Disney's Oceaneer Lab: 7:00 pm - 9:00 pm

MORE TO ENJOY WHILE ONBOARD



EASTERN CARIBBEAN

Disney Cruise Line offers a variety of sailings to exotic ports in the Caribbean, including port of Tortola, in the British Virgin Islands. Most voyages even include a stop at Disney Castaway Cay. Visit the Disney Vacation Planning desk, Deck 4, Midship, for more information. Disney Vacation Planning tends to get busy on the last day of sailing. Don't miss the opportunity to plan your next Disney vacation.



DISNEY VACATION CLUB® GROUP PREVIEW

Want to learn more about taking magical vacations year after year? Please see a Disney Vacation Club representative on Deck 4, Midship, or call 7-2805 from your stateroom phone for more information about our interactive group presentation.



PORT SHOPPING INFORMATION

Meet Michael, your Port Shopping Guide at the Port Shopping Desk, Deck 3, Midship between 7:30 pm - 8:30 pm. Also be sure not to miss today's Port Shopping Presentation where you will discover the incredible shopping ashore St. Petersburg has to offer. Everything from replica Fabergé eggs, Amber Jewellery, and so much more. Learn the best ways to get around our ports of calls and how to find the best deals on what you're looking for. Port Shopping Show, 1:00pm in the Buena Vista Theatre, Deck 5 Aft.



SENSES
SPA & SALON

ONBOARD ACUPUNCTURE

Naturally effective for pain, arthritis, sea sickness, stress, digestion, weight loss, and much more. Let us help you enjoy your magical cruise and beyond.

1 session for \$150, 3 sessions for \$360

Senses Spa & Salon, Deck 9, Forward, Extension 7-1465

DISNEY INSPIRED DIAMOND COLLECTION

by SOPHIA FIORI
DIAMONDS

AVAILABLE AT WHITE CAPS
DECK 4, FORWARD



Shutters

SAY CHEESE

Your family is dressed up and ready to enjoy the evening. Capture the memories in your formal attire by visiting our professional portraiture studios in the Lobby Atrium, Deck 3, Midship, from 5:15 pm - 6:15 pm, 7:15 pm - 8:30 pm, and 9:30 pm - 10:15 pm.

**Offer available per stateroom; terms and conditions apply*

Connect @ Sea

We are now offering a NEW and improved Internet service to stay connected on your cruise like no other in the industry! Internet packages range from \$0.25 per MB - \$89.00 (1000 MB package). For more information contact your Connect@Sea Expert or Guest Services onboard. Possible service interruptions due to area configuration.

TRANSPORTATION INFORMATION

Should you wish to purchase transportation to the Copenhagen airport, kindly proceed to Guest Services on Deck 3, Midship for further assistance.

CURRENCY EXCHANGE

Credit/debit cards are widely accepted & preferred in European ports of call, however, Euros will also be available for exchange at Guest Services, Deck 3, Midship. Please check with Guest Services for further information.



What's your next adventure? Ask your friendly Port Adventures team about options for Tallinn tomorrow. Explore the present-day life of typical Estonians, both in the countryside and in the city during the Town & Country Side Port Adventure.

Stop by the **Port Adventures Desk** on **Deck 3, Midship**.

SHOPPING

TRAVEL COLLECTION

Find the perfect souvenir that pays homage to Walt's love of sailing with the Disney Cruise Line Travel Collection. White Caps, Deck 4, Forward.

BALTIC AMBER

Don't miss 'The Ancient Gold of the North' with guest speaker Miss Lian Jones. Discover a colorful journey from its pre-historic origins, including the story of the St. Petersburg Amber Room and how to spot real amber from fake amber. Today at 10:45 am in the Buena Vista Theatre, Deck 5, Aft.

BIBBIDI BOBBIDI BOUTIQUE

Young Princesses and Princes can get ready for a formal evening with a makeover at the Bibbidi Bobbidi Boutique. Make your reservations by visiting Bibbidi Bobbidi Boutique, Deck 10, Forward, Port Side, or dialing extension 7-1492. Limited space available.

NORTHERN EUROPEAN MERCHANDISE

Find an array of Northern European merchandise for everyone in the family when you visit White Caps. Deck 4, Forward.

RUSSIAN ART, LEGENDS AND FAIRYTALES LECTURE

Join Guest Lecturer Chris Martin for a colorful journey through a thousand years of Russia's artistic heritage from Russian Icons, Lacquer Miniatures, Alexander Pushkin and the famous Matryoshka Nesting Dolls. Today at 2:15 pm in Fathoms, Deck 3, Forward.

PRECIOUS DISNEY PLUSHES

Cuddle up with some of your favorite Disney pals when you swing by Mickey's Mainsail and discover a lovable, soft Plush. From Stitch to Mickey and Minnie, you'll be sure to find a new cuddly friend to take home. Deck 4, Forward.

IMPORTANT INFORMATION

Security Notice

All Guests (including Children) who wish to disembark or embark the ship are required to present their Key to the World card at the gangway. A photo ID is also required for those Guests who are 18 years of age or older. Guests under the age of 18 are required to have a parent, guardian or other responsible adult sign an authorization form at the Guest Service Desk if they wish to go ashore unaccompanied or with an adult from another stateroom.

Insect Repellent Advisory

Protect against mosquito bites and related illnesses when going ashore. Insect repellent is available for purchase in White Caps. When using both sunscreen and insect repellent, use sunscreen first and apply insect repellent on top of sunscreen.

Cold and Flu Reminder

Please wash hands frequently and thoroughly, particularly before meals. Contact the Health Center by dialing 7-1923, should anyone in your party become ill.

Inclement Weather

For the safety of all Guests, outdoor events may be changed due to unforeseen weather conditions.

Corridor Quiet Hours

As a courtesy to all our Guests, please recognize quiet hallway hours from 10:00 p.m. til 8:00 a.m.

Environmental Message

With Disney's commitment to the Environment please refrain from throwing anything over the Ship's side. Thank you.

No Reserved Seats Policy

As a courtesy to all Guests we kindly advise that the saving of seats is not permitted in the Walt Disney Theatre, and the saving of the sun loungers is not permitted on Deck 9 and 10. Items left unattended will be returned to lost and found at Guest Services, Deck 3, Midship.

Smoking

For the comfort of our guests, the following areas are designated as smoking areas:
• Deck 9 Forward, Port Side
• Deck 4, Starboard Side from 6:00 p.m. to 6:00 a.m. only (all of Deck 4 is non-smoking from 6:00 a.m. to 6:00 p.m.)
Smoking is prohibited inside all guest staterooms and on stateroom verandahs. Guests found smoking in their staterooms or on their verandahs will be charged a \$250 stateroom recovery fee.

Walt Disney Theatre

Theatrical performances may use artificial fog, strobe lights, pyrotechnics and other special effects. For the safety of our performers and the comfort of those around you, the use of any photography or video recording device or any electronic equipment is prohibited.

Verandah Safety

Please do not leave any combustible materials on your balcony when not present in your stateroom for safety reasons.