

PERSONAL NAVIGATOR



Sunrise: 4:27 am Sunset: 10:53 pm
 Evening Attire: Cruise Casual
 All Ashore: 8:15 am
 All Aboard: 4:45 pm
 Today: Partly Sunny High: 58°F/14°C
 Tomorrow: Partly Cloudy High: 62°F/17°C

MONDAY, JUNE 27, 2016

STAVANGER, NORWAY



SHOWTIME

Featuring the Illusions of

Hector is Magic!

WALT DISNEY THEATRE

Deck 4, Forward

6:30 pm & 8:45 pm

As a courtesy to all Guests, we kindly advise that the saving of seats is **not** permitted in the Walt Disney Theatre.



Assistance available at the entrance to the Walt Disney Theatre 30 minutes prior to show time.



Welcome to Stavanger

Norway's Petroleum Capital

Sometimes referred to as Bergen's little brother, Stavanger offers its own quaint charm, with original dock side warehouses and pretty 18th-Century streets climbing up from a bustling harbor. With a history that stretches back deep into the middle ages, the city offers a delightful mix of the old and new, and a landscape just as diverse, offering sandy beaches, steep mountains and breathtaking fjords. Once a tranquil coastal market town and then later an important fishing port, the discovery of oil offshore in 1969 forever changed the now bustling city's fortunes and landscape.

While it retains something of its small-town roots – an enchanting feeling of light and space – the impact on the local economy is evident. Most nights, especially in summer, the city's waterfront comes alive in the best tradition of port cities, and locals can eat well here, if not inexpensively.

Located at the mouth of the Gandsfjord in southwestern Norway and considered the gateway to the Norwegian fjords, Stavanger offers a rich cultural experience, with vestiges from the Viking Age, including the battle in Hafsfjord in 872 AD found in the region. Enjoy Norway's most international city, from Fargegaten, a colorful street where old wooden houses have been painted with bright colors, to all the natural wonders of the area.



Check your port adventures tickets for your tour meeting time and location. Stop by the Port Adventures Desk located on Deck 3, Midship for tour availability and information, where our team will be delighted to help you plan your vacation.

DINNER MENU

Animator's Palate : Freezing The Night Away
 Carioca's : Freezing The Night Away
 Lumiere's : Freezing The Night Away

DRINK OF THE DAY

Golden Leafs (Alcoholic)
 Northern Garden (Non-Alcoholic)

IMPORTANT NUMBERS

Fire/Security: 7-3001
 Medical Emergency: 7-3000
 Health Center: 7-1923

ADULT ACTIVITY HIGHLIGHTS

SENSES SPA FITNESS CLASSES & SEMINARS

Sunrise Stretch - Senses Spa Fitness Center - 7:00 am
Pub Abs - Senses Spa Fitness Center - 7:30 am
Body Sculpt Boot Camp (Nom. Fee) - Senses Spa Fitness Center - 8:00 am
Seminar: Chinese Herbal Remedies - Senses Spa & Salon - 4:00 pm
Yoga - Senses Spa Fitness Center - 4:00 pm
Complimentary Footprint Analysis - Senses Spa Fitness Center - 5:00 pm



1820 SOCIETY: ICE CREAM SOCIAL

Eye Scream, Deck 9, Aft - 5:15 pm
 Join your fellow Society members for some ice cream and conversation.

ULTIMATE DISNEY TRIVIA

O'Gills Pub, Deck 3, Forward - 4:15 pm
 Think you know all there is to know about Disney? Come test your knowledge at ultimate Disney trivia for the Adults.

ICE BREAKERS

Fathoms, Deck 3, Forward - 10:00 pm
 Fancy some fun? Want to get to know your fellow Guests? Then join us as we break the ice in this fun filled game show.



VARIETY SHOW: TAYLOR MASON

Fathoms, Deck 3, Forward - 10:30 pm
 Featuring the Ventriloquism & Comedy of Taylor Mason, as he entertains you in this adult exclusive show.



CLUB FROZEN THE AFTER-PARTY

Fathoms, Deck 3, Forward - 11:00 pm
 After the fun ends on deck, head to this cool adult-exclusive party with a special appearance by The Walt Disney Theatre Dancers.



FUN FOR ALL AGES HIGHLIGHTS



GOOD MORNING DISNEY MAGIC
 Tune in to channel 24-2 as your Cruise Director highlights the upcoming events and activities for the day.

FAMILY CRAFTS

Promenade Lounge, Deck 3, Aft - 1:00 pm & 4:00 pm
 Create a fun souvenir with your Cruise Staff that is yours to keep.

PICTIONARY CHALLENGE

Promenade Lounge, Deck 3, Aft - 2:00 pm
 Join your Cruise Staff for this exciting game of fast draw.

DISNEY CHARADES

Promenade Lounge, Deck 3, Aft - 2:45 pm
 Join your Cruise Staff as they put your acting skills to the test in this hilarious guessing game.

GAME SHOW: THE FEUD

Promenade Lounge, Deck 3, Aft - 3:30 pm
 "Survey Says" you'll have a fantastic time with our version of a classic game.

\$10,000 MEGA JACKPOT BINGO

Bingo Pre-Sales start at 4:00 pm
Fathoms, Deck 3, Forward - 4:15 pm
 It's Big, it's Massive, it's Supersized! It's \$10,000 MEGA Jackpot Bingo! Take home \$10,000 if you can cover your card in 46 numbers or less. If not, we carry on to play for the biggest cash prize of the session. Pre-Sales start 15 minutes prior to game.



OAKEN'S MAYPOLE SWIRL AND TWIRL

Lobby Atrium, Deck 3, Midship - 5:15 pm
 Hoo-Hoo! Family! Join Oaken's cousins in the Lobby Atrium for a Midsummer celebration. Take a swirl and a twirl around the maypole and learn some traditional songs and dances, yah?



FAMILY SUPERSTAR KARAOKE

D Lounge, Deck 4, Midship - 10:45 pm
 Join your Cruise Staff in D Lounge tonight and sing along to your favorite song - fun for everyone.



FROZEN FUN NIGHT

D Lounge, Deck 4, Midship - 10:00 pm
 Join your Cruise Staff for an After Party celebrating "Freezing the Night Away".

SAFETY ASHORE INFORMATION

While you will find many great experiences ashore, please remain vigilant about your personal safety and the safety of your belongings. As in any large urban tourist destination, you'll want to take some basic precautions to make the most of your time ashore.

- Be aware of your surroundings at all times. Avoid short cuts, narrow alleys and poorly lit streets.
- Avoid wandering from the main shopping and tourist areas into unfamiliar territory. If venturing out independently, have a plan, use only licensed taxi operators.
- Identity/Credit Card theft can occur anywhere. Please remain vigilant in monitoring the safe keeping of your personal information.
- Leave valuables in your room safe and avoid carrying large amounts of cash. Exercise caution when using ATMs. Cameras and handbags should be carried close to your body or concealed out of sight.
- Leave air transportation tickets and other travel documents in your room safe. When going ashore, each adult is required to carry a Driver's license, passport or other government-issued photo ID. Note: Some ports may require guests to carry passports ashore.
- Most crimes are easier to commit in dark unlit areas. When going ashore at night, please be extra vigilant about your personal safety.

ANNA'S CHOCOLATE CHASE SCAVENGER HUNT RIDDLES

Disney Magic - 9:00 am - 11:00 pm

Clue 6 - On days when the ship is filled with cheer, the babies can nap & play in here.

Clue 7 - If you're looking for the sauna, feeling stressed to the max, come to this place where you can totally relax!

Clue 8 - If you have a question or need some advice, these cousins are helpful and always so nice!

Clue 9 - So many photos all in one place, that capture your memories and the smile on your face.



These are your final 4 Clues.

YOUTH ACTIVITIES HIGHLIGHTS

DINE & PLAY

As a convenience for families dining at 8:45 pm, our Youth Activities Counselors will be available at 9:45 pm at the entrance of Lumiere's, Carioca's and Animator's Palate to bring registered children to join the fun in Disney's Oceaneer Club and Disney's Oceaneer Lab.



Deck 5, Midship (7-1439)
(3-12 years old)

8:00 am - 9:30 pm

PICTURE THIS

4:00 pm

Create your own professional picture frame and take a photo with a special guest.

DO YOU WANNA BUILD A SNOWMAN?

5:00 pm

Help us bring one of our favorite Frozen songs to life! Create your own personal flurry and build a snowman to keep with you throughout the cruise!



Deck 5, Midship (7-1445)
(3-12 years old)

11:00 am - 12:00 am

SUPER SLOPPY SCIENCE

11:15 am

Join Professor Make-O-Mess in some of the most extreme experiments you will ever see in the world of Super Sloppy Science!

4TH PIGS PASTA PALACE

7:30 pm

Build your very own house made out of pasta and play-doh for Franco, the Fourth Little Pig, to see if it will withstand nature's forces.



Deck 9, Midship (7-5816)
(11-14 years old)

11:00 am - 12:00 am

SPORTS DECK FUN

3:00 pm

Take over the Sports Deck with some fun and friendly competition.

SMOOTHIE HOUR

6:30 pm

Join us for Smoothies.



Deck 10, Midship (7-18517)
(14-17 years old)

12:00 pm - 1:00 am

ANIMATION CELLS

1:00 pm

Learn what it takes to be a Disney Animator, then put your new skills to the test as you create your very own animation cell.

CHIP-IT GOLF

12:00 am

It's par for the course! Come and compete on our special "greens" in this fun tournament.

YOUTH ACTIVITIES OPEN HOUSE

Open House is an opportunity for all to come and participate in a variety of exciting activities and free time in the Oceaneer Club, Oceaneer Lab, it's a small world nursery, Vibe and Edge throughout the cruise. During these times secured programming will still be offered in the other venue for those looking to check their children into care.

Edge: 11:00 am - 12:00 pm & 4:30 pm - 6:30 pm

Vibe: 12:00 pm - 1:00 pm & 6:00 pm - 7:30 pm

Disney's Oceaneer Club: 11:00 am - 2:00 pm & 6:00 pm - 7:00 pm

Disney's Oceaneer Lab: 2:00 pm - 5:00 pm

FREEZING THE NIGHT AWAY
with Anna, Elsa and Friends
7:45 pm, Deck 9 Stage

It's a Big Summer Blowout! Come join some of your favorite Frozen friends and Arendelle's royal party planners on for the best deck celebration on this side of the fjord! (Weather Permitting)

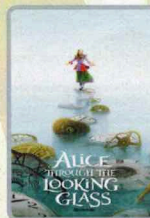
Viewing area located Deck 9 Midship, Starboard side.

Club Frozen: The After-Party (18+)
11:00 pm
Fathoms, Deck 3, Forward

After the fun ends on deck, head to this cool adult-exclusive party with a special appearance by the Walt Disney Theatre Dancers.

BUENA VISTA THEATRE

Deck 5, Aft
Today's Movies



DOLBY 3D

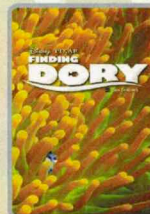
8:30 am
Duration:
1 hr 48 mins
Rating: PG



10:45 am
Duration:
1 hr 45 mins
Rating: PG



1:00 pm
Duration:
1 hr 48 mins
Rating: PG



Open Captioning

3:15 pm
Duration:
1 hr 45 mins
Rating: PG



5:15 pm & 8:15 pm
Duration:
2 hrs 27 mins
Rating: PG-13



11:15 pm
Duration:
1 hr 46 mins
Rating: PG

MORE TO ENJOY WHILE ONBOARD



WESTERN CARIBBEAN

Set your compass for the Caribbean! Disney Cruise Line offers Western Caribbean sailings to exotic ports where you'll find your Caribbean paradise. Most voyages even include a stop at Disney Castaway Cay. Visit the Disney Vacation Planning desk, Deck 4, Midship, for more information. Disney Vacation Planning tends to get busy on the last day of sailing. Don't miss the opportunity to plan your next Disney vacation.



DISNEY VACATION CLUB® GROUP PREVIEW

Want to learn more about taking magical vacations year after year? Please see a Disney Vacation Club representative on Deck 4, Midship, or call 7-2805 from your stateroom phone for more information about our interactive group presentation.



PORT SHOPPING INFORMATION

Meet Michael, your Port Shopping Guide at the Port Shopping Desk, Deck 3, Midship between 7:30 pm - 8:30 pm. Find out about all the amazing shopping available to you in our ports of calls this cruise. Michael will help you find that once in a life time keepsake to commemorate your cruise vacation.

Connect @ Sea

We are now offering a NEW and improved Internet service to stay connected on your cruise like no other in the industry! Internet packages range from \$0.25 per MB - \$89.00 (1000 MB package). For more information contact your Connect@Sea Expert or Guest Services onboard. Possible service interruptions due to area configuration.

CURRENCY EXCHANGE

Credit/debit cards are widely accepted & preferred in European ports of call, however, Norwegian Krone & Euros will also be available for exchange at Guest Services, Deck 3, Midship. Please check with Guest Services for further information.

CASH DECLARATION NOTICE

Guests going ashore in port with over 10,000 Euros (or cash equivalent in any other currency), are required to declare it to Customs upon arrival, or risk having it confiscated if stopped by local authorities.



SENSES
SPA & SALON

**BACK BY
POPULAR DEMAND!
PAMPER PACKAGE**

- 50 minute Full Body Massage
 - Foot & Ankle Massage
 - Indian Scalp Massage
 - 25 Minute Booster Facial
- All for \$149

Senses Spa & Salon, Deck 9, Forward, Extension 7-1465



Discover Stavanger with our Port Adventures! It has a wonderful mix of old and new world charm. The regions landscape varies between sandy beaches, steep mountains and fjords. Come on, let's explore!

Port Adventures Desk, Deck 3, Midship

SHOPPING

2016 DISNEY CRUISE LINE MERCHANDISE

Step into Mickey's Mainsail today and commemorate your Disney cruise with a wide selection of 2016 Disney Cruise Line merchandise. From casual apparel to drink ware and more, you are sure to find a special souvenir for the whole family. Deck 4, Forward.

NORWAY & ICELAND MERCHANDISE

Stop by White Caps to commemorate your Norway Iceland sailing with great new merchandise including, tees, a fleece, an ornament, a magnet and a tervis cup. Deck 4, Forward.

PETITE ART PRINTS AT THE VISTA GALLERY

Are you an art lover on a budget? Do you have limited space in your suitcase or on your walls at home? There's no need to miss out on owning inspiring creations by some of Disney's greatest artists! Stop by the Vista Gallery and check out the various petite prints of artwork created by these celebrated artists. Deck 4, Midship.

INNOVATIVE DESIGNS BY CITIZEN WATCHES

It starts with a simple, yet revolutionary concept: a watch that never needs a battery. Citizen Eco-Drive technology harnesses the power of light from any natural or artificial light source and converts to energy. See the Collection of Men's and Ladies' watches available in White Caps, Deck 4, Forward.

DISNEY CRUISE LINE STAR WARS MERCHANDISE

Head to Mickey's Mainsail where you'll discover the fun apparel items designed exclusively for Disney Cruise Line that are sure to excite Star Wars fans of any age! Deck 4, Forward.



Don't forget to add the 2016
Norway Pin to your
collection!
Mickey's Mainsail

Deck 4, Forward

Shutters SMILE!

Tonight is your last chance to have portraits of family and friends taken by your professional photographers. Portraits will be available in the Lobby Atrium, Deck 3, Midship from
5:15 pm - 6:15 pm, 7:15 pm - 8:30 pm and 9:30 pm - 10:15 pm

DM1000 06-27-2016 ©DISNEY

Due to port regulations, when the ship is docked, the stores will remain closed.

IMPORTANT INFORMATION

Security Notice

All Guests (including Children) who wish to disembark or embark the ship are required to present their Key to the World card at the gangway. A passport is also required for all Guests wishing to go ashore. Guests under the age of 18 are required to have a parent, guardian or other responsible adult sign an authorization form at the Guest Service Desk if they wish to go ashore unaccompanied or with any adult from another stateroom.

Insect Repellent Advisory

Protect against mosquito bites and related illnesses when going ashore. Insect repellent is available for purchase in White Caps. When using both sunscreen and insect repellent, use sunscreen first and apply insect repellent on top of sunscreen.

Cold and Flu Reminder

Please wash hands frequently and thoroughly, particularly before meals. Contact the Health Center by dialing 7-1923, should anyone in your party become ill.

Inclement Weather

For the safety of all Guests, outdoor events may be changed due to unforeseen weather conditions.

Corridor Quiet Hours

As a courtesy to all our Guests, please recognize quiet hallway hours from 10:00 p.m. til 8:00 a.m.

Environmental Message

With Disney's commitment to the Environment please refrain from throwing anything over the Ship's side. Thank you.

No Reserved Seats Policy

As a courtesy to all Guests we kindly advise that the saving of seats is not permitted in the Walt Disney Theatre, and the saving of the sun loungers is not permitted on Deck 9 and 10. Items left unattended will be returned to lost and found at Guest Services, Deck 3, Midship.

Smoking

For the comfort of our guests, the following areas are designated as smoking areas:

- Deck 9 Forward, Port Side
- Deck 4, Starboard Side from 6:00 p.m. to 6:00 a.m. only (all of Deck 4 is non-smoking from 6:00 a.m. to 6:00 p.m.)

Smoking is prohibited inside all guest staterooms and on stateroom verandahs. Guests found smoking in their staterooms or on their verandahs will be charged a \$250 stateroom recovery fee.

Walt Disney Theatre

Theatrical performances may use artificial fog, strobe lights, pyrotechnics and other special effects. For the safety of our performers and the comfort of those around you, the use of any photography or video recording device or any electronic equipment is prohibited.

Verandah Safety

Please do not leave any combustible materials on your balcony when not present in your stateroom for safety reasons.

Morning	8:30	8:45	9:00	9:15	9:30	9:45	10:00	10:15	10:30	10:45	11:00	11:15	11:30	11:45	12:00	12:15	12:30	12:45	1:00	1:15	1:30	
FUNNEL VISION	Frozen (PG) Funnel Vision								Lady and the Tramp (G) Funnel Vision				Descendants Funnel Vision									
BUENA VISTA THEATRE	Alice Through the Looking Glass (PG) DOLBY 3D Duration: 1 Hour 48 Minutes								Finding Dory (PG) Duration: 1 Hour 45 Minutes				Zootopia (PG) Duration: 1 Hour 48 Minutes									
CHARACTERS																						
FUN FOR ALL AGES											Memory Wall				Family Crafts Promenade Lounge							
ADULTS	Friends of Bill W. Keys																					
VIBE 14-17 YEARS OLD											Youth Activities Open House				Youth Activities Open House				Animation Cells			
EDGE 11-14 YEARS OLD											Youth Activities Open House				Craft Corner				GAGA Ball			
OCEANEER LAB 3-12 YEARS OLD											Super Sloppy Science				Lunch							
OCEANEER CLUB 3-12 YEARS OLD	Pool Stretches		Wii Challenge				Game Challenge				Youth Activities Open House				Memory Wall				Become Iron Man!			

Afternoon	1:45	2:00	2:15	2:30	2:45	3:00	3:15	3:30	3:45	4:00	4:15	4:30	4:45	5:00	5:15	5:30	5:45	6:00	6:15	6:30	6:45			
FUNNEL VISION	Pocahontas (G) Funnel Vision								Finding Nemo (G) Funnel Vision															
BUENA VISTA THEATRE									Finding Dory (PG) Open Captioning Duration: 1 Hour 45 Minutes				Captain America: Civil War (PG-13) Duration: 2 Hours 27 Minutes											
CHARACTERS											Minnie DK4 Mid (S)		Daisy DK4 Mid (S)		Mickey Preludes		Goofy Preludes							
FUN FOR ALL AGES	Pictionary Challenge Promenade Lounge		Disney Charades Promenade Lounge		Game Show: The Feud Promenade Lounge		Bingo Pre-Sales		\$10,000 Mega Jackpot Fathoms				Lobby Atrium		The Magic and Illusion of HECTOR IS MAGIC! Walt Disney Theatre									
ADULTS	The Championships: Wimbledon 2016 O'Gills Pub (Subject to satellite availability)								Family Crafts Promenade Lounge		Toddler Time Promenade Lounge		Live Piano with Bemadett Bihari Promenade Lounge		UEFA Euro 2016: Italy vs. Spain O'Gills Pub (Subject to satellite availability)									
VIBE 14-17 YEARS OLD	Animation Cells		GAGA Ball		Smoothie Hour		Sports Deck Fun				Game Challenge		Youth Activities Open House											
EDGE 11-14 YEARS OLD	GAGA Ball		Bingo		Sports Deck Fun						Youth Activities Open House		Smoothie Hour											
OCEANEER LAB 3-12 YEARS OLD	Youth Activities Open House				Video Game Challenge				Animation Antics				Hidden Mickey Challenge				Dinner							
OCEANEER CLUB 3-12 YEARS OLD	Open House		Hula Hoop Jam		Playmation		Picture This				Do You Wanna Build A Snowman?		Youth Activities Open House											

Evening	7:00	7:15	7:30	7:45	8:00	8:15	8:30	8:45	9:00	9:15	9:30	9:45	10:00	10:15	10:30	10:45	11:00	11:15	11:30	11:45	12:00			
FUNNEL VISION									Frozen (PG) Funnel Vision				Ice Princess (G) Funnel Vision											
BUENA VISTA THEATRE									Captain America: Civil War (PG-13) Duration: 2 Hours 27 Minutes				The Jungle Book (2016) (PG) Duration: 1 Hour 46 Minutes											
CHARACTERS											Minnie DK4 Mid (S)		Daisy DK4 Mid (S)		Mickey Preludes		Goofy Preludes							
FUN FOR ALL AGES	Deck 9 Stage				The Magic and Illusion of HECTOR IS MAGIC! Walt Disney Theatre				Frozen Fun Night D Lounge				D Lounge											
ADULTS	UEFA Euro 2016: Italy vs. Spain O'Gills Pub (Subject to satellite availability) <Starts at 6:00 pm								Cruise Staff DJ Fathoms		Ice Breakers Fathoms		The Comedy & Ventriologism of TAYLOR MASON Fathoms		Fathoms		Cruise Staff DJ Fathoms							
VIBE 14-17 YEARS OLD	Open House		Deck Party		Cards Tournament		Scavenger Hunt		Gender Wars				Marvel Avengers Academy		GAGA Ball									
EDGE 11-14 YEARS OLD	Smoothie Hour		Deck Party		Create a Postcard		Gender Wars		Game Challenge				Marvel Avengers Academy		GAGA Ball									
OCEANEER LAB 3-12 YEARS OLD	4th Pigs Pasta Palace				Trivia Time				Monstropolis Most Wanted				Pathfinders											
OCEANEER CLUB 3-12 YEARS OLD	Camp Out				Cartoon Time				Disney's Oceaneer Club closes at 9:30 pm.															

Symbol for activities that will be repeated during the cruise

Fold along the dotted lines and take me with you so you don't miss any of the fun!

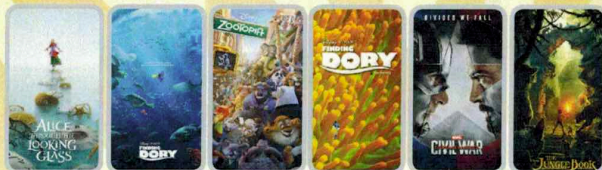
FOLD

YOUTH ACTIVITIES OPEN HOUSE
A non-secured program with activities for families, adults and children of all ages to enjoy together.

MONDAY, JUNE 27, 2016 - STAVANGER, NORWAY

BUENA VISTA THEATRE

Deck 5, Aft



DOLBY 3D **Open Captioning**

8:30 am	10:45 am	1:00 pm	3:15 pm	5:15 pm &	11:15 pm
Duration: 1 hr 48 mins	Duration: 1 hr 45 mins	Duration: 1 hr 48 mins	Duration: 1 hr 45 mins	Duration: 2 hrs 27 mins	Duration: 1 hr 46 mins
Rating: PG	Rating: PG	Rating: PG	Rating: PG	Rating: PG	Rating: PG

Character Appearances

MINNIE MOUSE
DK4 Mid (S)
5:15 pm & 9:45 pm

GOOFY
Preludes
6:00 pm & 10:15 pm

MICKY MOUSE
Preludes
5:30 pm & 9:45 pm

**FREEZING THE NIGHT
AWAY WITH ANNA, ELSA
AND FRIENDS!**
Deck 9 Stage - 7:45 pm

DAISY DUCK
DK4 Mid (S)
5:45 pm & 10:15 pm



(P) - Portside, (S) - Starboard Side
Don't forget your Camera to capture those Magical Moments!
Check here each day for Character appearances.
For detailed Character appearance information
see the Character Information Board in the Lobby Atrium.
Meet-and-Greets will be advertised for the length of time the line will be open. To avoid disappointment, please meet at start time of appearances.

SHIP DIRECTORY

YOUTH ACTIVITIES

DISNEY'S OCEANEER CLUB	DECK 5, MID	8:00 AM - 9:30 PM
DISNEY'S OCEANEER LAB	DECK 5, MID	11:00 AM - 12:00 AM
EDGE	DECK 9, MID	11:00 AM - 12:00 AM
IT'S A SMALL WORLD NURSERY	DECK 5, AFT	8:00 AM - 11:00 PM
VIBE	DECK 10, MID	12:00 PM - 1:00 AM

POOLS

*Children under 12 years of age must have adult supervision in all pools.

AQUADUNK	DECK 10, MID	2:00 PM - 7:00 PM
AQUALAB	DECK 9, AFT	10:00 AM - 8:00 PM
GOOFY'S POOL	DECK 9, MID	10:00 AM - 6:00 PM
NEPHEWS' SPLASH ZONE	DECK 9, AFT	10:00 AM - 6:00 PM
QUIET COVE POOL (18+)	DECK 9, FWD	8:00 AM - 11:00 PM
TWIST 'n' SPOUT	DECK 9, AFT	2:00 PM - 7:00 PM

Please note, "selfie sticks" are not permitted in the pools or on the slides.
Complimentary pool vests are available for children to use in the pools onboard.
They are located on the pool deck.

RECREATION

PORT ADVENTURES DESK	DECK 3, MID	7:30 AM - 10:00 AM
		7:00 PM - 8:30 PM
SENSES FITNESS CENTER (18+)	DECK 9, FWD	6:00 AM - 10:00 PM
WIDE WORLD OF SPORTS DECK	DECK 10, FWD	24 HOURS

GENERAL INFORMATION

BUENA VISTA THEATRE	DECK 5, AFT	SHOWTIMES
CONNECT@SEA DESK	DECK 3, AFT	8:00 AM - 10:00 AM
		4:00 PM - 6:00 PM
		7:00 PM - 10:00 PM
DISNEY VACATION CLUB DESK	DECK 4, MID	5:30 PM - 10:00 PM
DISNEY VACATION PLANNING DESK	DECK 4, MID	8:00 AM - 9:00 AM
		4:00 PM - 10:00 PM
FUNNEL VISION	DECK 9, MID	SHOWTIMES
GUEST SERVICES	DECK 3, MID	24 HOURS
HAIR BRAIDING	DECK 9, MID	
MEDICAL HEALTH CENTER	DECK 1, FWD	9:30 AM - 11:00 AM
		4:30 PM - 7:00 PM
PORT SHOPPING DESK	DECK 3, MID	7:30 PM - 8:30 PM
PRELUDES	DECK 4, FWD	5:30 PM - 9:00 PM
SENSES SPA AND SALON	DECK 9, FWD	8:00 AM - 10:00 PM
SHUTTERS PHOTO GALLERY	DECK 4, AFT	5:30 PM - 11:00 PM
WALT DISNEY THEATRE	DECK 4, FWD	SHOWTIMES

SHOPPING

BIBBIDI BOBBIDI BOUTIQUE	DECK 10, FWD	12:00 PM - 10:00 PM
MICKY'S MAINSAIL	DECK 4, FWD	6:00 PM - 12:00 AM
QUACKS	DECK 9, MID	
SEA TREASURES	DECK 3, FWD	6:00 PM - 12:00 AM
VISTA GALLERY	DECK 4, MID	6:00 PM - 11:30 PM
WHITE CAPS	DECK 4, FWD	6:00 PM - 12:00 AM

IMPORTANT NUMBERS

Fire/Security: 7-3001
Medical EMERGENCY: 7-3000
Health Center: 7-1923

DINNER MENU	Animator's Palate : Freezing The Night Away	Golden Leafs (Alcoholic)	DRINK OF THE DAY	WEATHER FORECAST	Today: Partly Sunny
	Carioca's : Freezing The Night Away	Northern Garden (Non-Alcoholic)			High: 58° F/14° C
	Lumiere's : Freezing The Night Away				Tomorrow: Partly Cloudy
			High: 62° F/17° C		

Evening Attire: Cruise Casual

DINING & LOUNGES

BREAKFAST

CABANAS	DECK 9, AFT	7:00 AM - 11:00 AM
DAISY'S DE LITES	DECK 9, AFT	6:30 AM - 8:15 AM
LUMIERE'S (À-LA CARTE)	DECK 3, MID	8:00 AM - 9:30 AM

LUNCH

CABANAS	DECK 9, AFT	11:45 AM - 2:00 PM
DAISY'S DE LITES	DECK 9, AFT	11:00 AM - 6:00 PM
LUMIERE'S (À-LA CARTE)	DECK 3, MID	12:00 PM - 1:30 PM
PETE'S BOILER BITES	DECK 9, AFT	11:00 AM - 6:00 PM
PINOCCHIO'S PIZZERIA	DECK 9, MID	11:00 AM - 6:00 PM

DINNER

ANIMATOR'S PALATE	DECK 4, AFT	6:00 PM & 8:30 PM
CABANAS TABLE SERVICE	DECK 9, AFT	6:30 PM - 8:30 PM
CARIOCA'S	DECK 3, AFT	6:00 PM & 8:30 PM
LUMIERE'S	DECK 3, MID	6:00 PM & 8:30 PM
PALO (18+) (FOR RESERVATIONS CALL 7-8843)	DECK 10, AFT	6:00 PM - 8:30 PM
PETE'S BOILER BITES	DECK 9, AFT	6:00 PM - 10:00 PM

LATE NIGHT SNACKS

O'GILLS PUB	DECK 3, FWD	10:45 PM - 11:30 PM
PINOCCHIO'S PIZZERIA	DECK 9, MID	7:00 PM - 12:00 AM
PROMENADE LOUNGE	DECK 3, AFT	10:45 PM - 11:30 PM

ADDED FEATURES

EYE SCREAM	DECK 9, AFT	11:00 AM - 11:00 PM
BEVERAGE STATION	DECK 9, AFT	5:00 AM - 12:00 AM
ROOM SERVICE	DIAL 7-4330	24 HOURS

ENTERTAINMENT - LOUNGES - BARS

Adults must be 21 and older to consume alcoholic beverages.

AFTER HOURS	DECK 3, FWD	(AFTER 9:00 PM. ADULTS ONLY)
COVE CAFE (18+)	DECK 9, MID	6:30 AM - 12:00 AM
D LOUNGE	DECK 4, MID	SHOWTIMES
FATHOMS (18+)	DECK 3, FWD	7:00 PM - 2:00 AM
FROZONE TREATS	DECK 9, AFT	12:00 PM - 6:00 PM
KEYS (18+)	DECK 3, FWD	6:00 PM - 12:30 AM
O'GILLS PUB (18+)	DECK 3, FWD	4:00 PM - 12:30 AM
PRELUDES	DECK 4, FWD	5:30 PM - 9:00 PM
PROMENADE LOUNGE	DECK 3, AFT	8:00 AM - 12:00 AM
PINOCCHIO'S PIZZERIA	DECK 9, MID	9:30 AM - 12:00 AM
SIGNALS (18+)	DECK 9, FWD	11:00 AM - 8:00 PM

Public Health Advisory: Consuming raw or undercooked meats, poultry, seafood, shellfish, or eggs may increase your risk for foodborne illness, especially if you have certain medical condition.

All Ashore: Approx. 8:15 am
All Aboard: 4:45 pm

Ship's Agent In Stavanger

Director Ship Agency
Capt. Morten Kinn, European Cruise Service AS
Strandgaten 197, P.O. Box 1926, 5817 Bergen, Norway
T: +47 5590 0780; Mobile: +47 9826 8285