

# PERSONAL NAVIGATOR



Sunrise: 6:36 am Sunset: 10:08 pm  
Evening Attire: Cruise Casual

Today: Cloudy High: 56°F/13°C  
Tomorrow: Cloudy High: 56°F/13°C

TUESDAY, MAY 24, 2016

DAY AT SEA



## LIVERPOOL LEGENDS

Beatles Tribute Band

WALT DISNEY THEATRE

Deck 4, Forward

6:30 pm & 8:45 pm

As a courtesy to all Guests, we kindly advise that the saving of seats is **not** permitted in the Walt Disney Theatre.

Assistance is available at the entrance to the Walt Disney Theatre 30 minutes prior to show time.



Steering Committee Spotlight

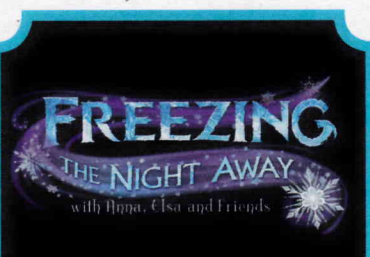
Cruise Director: Clayton Lyndsey

Hometown: Minneapolis, Minnesota



Clayton's career began as an Actor in 1996 with Disney Vacation Club at Disney's Hilton Head Island Resort. He joined Disney Cruise Line in 1998 and progressed through the ranks to become Cruise Director.

Clayton's favorite Disney Character is Simba.



### FAMILY DECK CELEBRATION

It's a Big Summer Blowout!  
Come join some of your favorite Frozen friends and Arendelle's royal party planners on Deck 9 for the best deck celebration on this side of the fjord! (Weather Permitting)

Deck Stage,  
Deck 9, Midship,  
7:45 pm

### Don't Miss:

#### Good Morning Disney Magic

D Lounge, Deck 4, Midship - 9:00 am

Get your day started with your Cruise Director and Special Guest, to find out what exciting events are happening around the ship today! Come sit in the audience and be a part of the live broadcast or watch live on channel 31-8 and on Funnel Vision.

#### Improv 101 Workshop

Fathoms, Deck 3, Forward - 9:45 am

Join Greg Triggs for a hands on experience to learn the fundamentals of Improv. This fun & dynamic class will help you put some fun techniques to work, train your brain for creative thinking, and inspire you to have fun!

#### Anyone Can Cook: Chicken & Waffles (18+)

D Lounge, Deck 4, Midship - 10:30 am

From our galley to yours. Join our Guest Chef, Chef Joseph Rowland as he shows you how to prepare a delicious dish. Today's Menu - Chicken & Waffles.

#### Variety Show: Trigg Watson (18+)

Fathoms, Deck 3, Forward - 10:30 pm

Featuring the Magic & Comedy of Trigg Watson, as he entertains you in this adult exclusive show.



Stop by the Port Adventures Desk, located on Deck 3, Midship, where our friendly team will assist you to plan your adventure to our ports of call!

### DINNER MENU

Animator's Palate : Freezing The Night Away  
Carioca's : Freezing The Night Away  
Lumiere's : Freezing The Night Away

### DRINK OF THE DAY

Double Crown (Alcoholic)  
Passion Cream Freeze (Non-Alcoholic)

### IMPORTANT NUMBERS

Fire/Security: 7-3001  
Medical Emergency: 7-3000  
Health Center: 7-1923



# ADULT ACTIVITY HIGHLIGHTS

## SENSES SPA FITNESS CLASSES & SEMINARS

*Sunrise Stretch* - Senses Spa Fitness Center - 7:00 am  
*Fab Abs* - Senses Spa Fitness Center - 7:30 am  
*Body Sculpt Boot Camp* (Nom. Fee) - Senses Spa Fitness Center - 8:00 am  
*Group Cycling* (Sign-Up Required) - Senses Spa Fitness Center - 9:00 am  
*Acupuncture: Relieving Back Pain* - Senses Spa & Salon - 10:00 am  
*Eat More to Weigh Less* - Senses Spa Fitness Center - 11:00 am  
*Good Feet Seminar: Walking In Comfort* - Senses Spa & Salon - 2:00 pm  
*Pure Form Pilates* - Senses Spa & Salon - 4:00 pm  
*Acupuncture: Chinese Herbal Remedies* - Senses Spa & Salon - 4:30 pm  
*Complimentary Footprint Analysis* - Senses Spa Fitness Center - 5:00 pm



## TASTING CLASSES

*Mojito & Caipirinha Tasting* (21+) - Keys - 2:00 pm

*Beer Tasting* (21+) - Keys - 4:00 pm

*Rum Tasting* (21+) - Cove Cafe - 10:30 pm

Please make reservations for tastings at Guest Services for a nominal fee.

Tasting Seminars are only for Guests 21 and older.

## 1820 SOCIETY: ICE CREAM SOCIAL

*Eye Scream, Deck 9, Aft - 11:45 am*

Join your fellow Society members for some ice cream and conversation.



## 1820 SOCIETY: 2000'S MUSIC CHALLENGE

*O'Gills Pub, Deck 3, Forward - 5:00 pm*

Join your Cruise Staff as we navigate our way through the music of the 2000's.

## ANYONE CAN COOK: CHICKEN & WAFFLES

*D Lounge, Deck 4, Midship - 10:30 am*

From our galley to yours. Join our Guest Chef, Chef Joseph Rowland as he shows you how to prepare a delicious dish. Today's Menu - Chicken & Waffles.



## CHEESE SEMINAR

*D Lounge, Deck 4, Midship - 1:45 pm*

A special seminar highlighting cheeses from around the world.

## MOVIE QUOTES TRIVIA

*O'Gills Pub, Deck 3, Forward - 2:15 pm*

"Life is like a box of Chocolates" Know the movie? Join your Cruise Staff and test your Movie Quote knowledge.

## CRAFTS: CREATE AN ORNAMENT

*O'Gills Pub, Deck 3, Forward - 4:00 pm*

Join your Cruise Staff and make some Ornaments.

## 90'S MUSIC TRIVIA

*Fathoms, Deck 3, Forward - 10:00 pm*

"If you Wannabe" the winner, then join us as we test your 90's music knowledge.



## VARIETY SHOW: TRIGG WATSON

*Fathoms, Deck 3, Forward - 10:30 pm*

Featuring the Magic & Comedy of Trigg Watson, as he entertains you in this adult exclusive show.



# FUN FOR ALL AGES HIGHLIGHTS

## GOOD MORNING DISNEY MAGIC

*D Lounge, Deck 4, Midship - 9:00 am*

Get your day started with your Cruise Director and Special Guest, to find out what exciting events are happening around the ship today! Come sit in the audience and be a part of the live broadcast or watch live on channel 31-8 and on Funnel Vision.



## ANNA'S CHOCOLATE CHASE SCAVENGER HUNT

*Port Adventures Desk, Deck 3, Midship - 9:00*

Follow Anna's clues as they lead you around the ship to solve today's riddles. Be sure to go hunting between 9:00 am and 11:00 pm and fill in your answers on your answer sheet!

## DISNEYLAND AT 60: MAIN STREET USA & DISNEYLAND AFTER DARK FEATURING STACIA MARTIN

*Buena Vista Theatre, Deck 5, Aft - 10:00 am*

Take a nostalgic stroll along Main Street with Stacia Martin, showcasing not only Walt Disney's idealized "home town," but the sparkling fun of nighttime entertainment, Disneyland style!

## WII TENNIS: CRUISE DIRECTOR VS. ASSISTANT CRUISE DIRECTOR

*Promenade Lounge, Deck 3, Aft - 11:00 am*

Who will win? Pick a side - it is time for your Cruise Director to take on the Assistant Cruise Director in this competitive Wii Challenge.

## DISNEY VACATION CLUB GROUP PREVIEW

*D Lounge, Deck 4, Midship - 12:15 pm*

Want to learn more about taking magical vacations year after year? Please see a Disney Vacation Club representative on Deck 4, Midship, or call 7-2805 from your stateroom phone for more information about our interactive group presentation.



## NAUTICAL KNOT TYING

*Fathoms, Deck 3, Forward - 1:00 pm*

Join one of our Navigational Bridge Officers for an instructional workshop on the maritime art of nautical knot tying.

## SOUNDS DELIGHTFUL: AN ILLUSTRATED AUDIO ADVENTURE FEATURING STACIA MARTIN

*Buena Vista Theatre, Deck 5, Aft - 1:45 pm*

Join Stacia Martin for a trip across the decades via vintage Disney vinyl recordings from her extensive personal collection. Hear forgotten favorites, promotional tracks, & never before heard musical moments from Walt Disney's own "Journey Down the Yellow Brick Road".

## VIENNESE WALTZ WITH CHRISTOPHER & KRISTINE

*Fathoms, Deck 3, Forward - 2:45 pm*

Join Christopher & Kristine, our ballroom dance duo, as they teach you how to Waltz.

## DOUBLE UP JACKPOT BINGO

*Bingo Pre-Sales start at 3:45 pm*

*Fathoms, Deck 3, Forward - 4:00 pm*

Special double up session: All electronic cards purchased will be doubled! The snowball jackpot continues to grow and could be won today! Pre-Sales start 15 minutes prior to the game.



## CLUB NEW YEAR'S EVE

*D Lounge, Deck 4, Midship - 9:45 pm*

Club New Year's Eve, you won't want to miss this journey of musical genres in history and performances by some of your favorite Cruise Staff. Bring your family and help us count down to a brand new year!



## FAMILY DANCE PARTY

*D Lounge, Deck 4, Midship - 10:15 pm*

Bring the whole family and dance your cares away to some of your favorite hits!

## DISNEY TUNES TRIVIA

*Promenade Lounge, Deck 3, Aft - 10:30 pm*

Determine just how well you know your Disney Tunes with your Cruise Staff.



# YOUTH ACTIVITIES HIGHLIGHTS

## DINE & PLAY

As a convenience for families dining at 8:45 p.m., our Youth Activities Counselors will be available at 9:45 p.m. at the entrance of Lumiere's, Carioca's and Animator's Palate to bring registered children to join the fun in Disney's Oceaneer Club and Disney's Oceaneer Lab.



Deck 5, Aft (7-5864)

9:00 am - 11:00 pm

Infants and Toddlers can enjoy toys and activities at It's a small world nursery. Reservations are first come, first served so please stop by!



Deck 5, Midship (7-1439)  
(3-12 years old)

11:30 am - 10:00 pm

## DO YOU WANNA BUILD A SNOWMAN?

7:45 pm

Help us bring one of our favorite Frozen songs to life! Create your own personal flurry and build a snowman to keep with you throughout the cruise!

## ALADDIN'S FUN ADVENTURES

9:00 pm

Come join us as we go on a fun-filled Arabian adventure, discover a flying carpet and find the hidden Genie.



Deck 5, Midship (7-1445)  
(3-12 years old)

9:00 am - 12:00 am

## SUPER SLOPPY SCIENCE

10:00 am

Join Professor Make-O-Mess in some of the most extreme experiments you will ever see in the world of Super Sloppy Science!

## PISTON CUP CHALLENGE

2:30 pm

It's Dinoco time and you're part of the pit crew! Design your own race car and see if you've got what it takes to end up in the winner's circle!



Deck 9, Midship (7-5816)  
(11-14 years old)

10:30 am - 1:00 am

## GAGA BALL

1:00 pm

Come take part in this great game as you try to outlast your opponents.

## RELAY GAMES

9:30 pm

Ready, Set, Go! It's relay race time, so get ready to show us what you got!



Deck 10, Midship (7-18517)  
(14-17 years old)

11:30 am - 2:00 am

## GOTCHA

12:00 pm

You will try to eliminate your victim by various methods collecting points throughout the day, last person standing with the most points wins.

## GHOST VOYAGERS

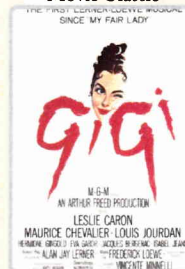
10:15 pm

Come learn about these mysterious waters and the friendly spirits that might inhabit them.

# BUENA VISTA THEATRE

Deck 5, Aft  
Today's Movies

## Movie Classic



Gigi

11:30 am

Duration: 1 hr 55 mins

Rating: Unrated



(2010)

3:30 pm

Duration: 1 hr 48 mins

Rating: PG

## Marvel Marathon



5:45 pm & 8:15 pm

Duration: 1 hr 46 mins

Rating: PG



Guardians of the Galaxy

10:45 pm

Duration: 2 hrs 2 mins

Rating: PG-13



## FAMILY DANCE PARTY

Club New Year's Eve, you won't want to miss this journey of musical genres in history and performances by some of your favorite Cruise Staff. Bring your family and help us count down to a brand new year!

D Lounge,  
Deck 4, Midship,  
9:45 pm



## ADULT THEME NIGHT

After the fun ends on deck, head to this cool adult-exclusive party with a special appearance by The Walt Disney Theater Dancers.

Fathoms (18+),  
Deck 3, Forward  
11:00 pm

## YOUTH ACTIVITIES OPEN HOUSE

Open House is an opportunity for all to come and participate in a variety of exciting activities and free time in the Oceaneer Club, Oceaneer Lab, it's a small world nursery, Vibe and Edge throughout the cruise. During these times secured programming will still be offered in the other venue for those looking to check their children into care.

Edge: 10:30 am - 11:30 am & 6:00 pm - 7:30 pm

Vibe: 7:30 pm - 9:00 pm

Disney's Oceaneer Club: 11:30 am - 2:00 pm & 4:30 pm - 7:00 pm

Disney's Oceaneer Lab: 7:30 pm - 9:30 pm



# MORE TO ENJOY WHILE ONBOARD



## NEW SUMMER 2017 ITINERARIES

Set sail in summer 2017 and discover exciting new destinations for the whole family in Alaska, Europe and the Caribbean! Visit the Disney Vacation Planning desk, Deck 4, Midship for more information.



## DISNEY VACATION CLUB® GROUP PREVIEW

Want to learn more about taking magical vacations year after year? Please see a Disney Vacation Club representative on Deck 4, Midship, or call 7-2805 from your stateroom phone for more information about our interactive group presentation.



## PORT SHOPPING INFORMATION

Meet Michael, your Port Shopping Guide at the Port Shopping Desk, Deck 3, Midship between 7:30 pm - 8:30 pm. Find out about all the amazing shopping available to you in our ports of calls this cruise. Michael will help you find that once in a life time keepsake to commemorate your cruise vacation.



## AROMA SEAWEED MASSAGE

Combining the richness of sea plants and marine algae with aromatherapy, this treatment deeply detoxifies and decongests the body. Designed to ease arthritis pain and stiff joints. Includes 2 Wraps, Foot and Ankle and Scalp massage, and to complete your relaxation a full-body or half body massage. Benefits last up to four weeks.

75 Minutes - \$188 100 Minutes - \$244

*Embarkation day special 100 minutes treatment for the price of 75 minutes treatment*

**Deck 9, Forward - Phone : 7-1465**



**DISNEY CRUISE LINE®**  
handbags by  
**DOONEY & BOURKE**  
available onboard!

**WHITE CAPS | DECK 4, FORWARD**



## GET THE PICTURE!

Order a Get the Picture! photo disc and share your vacation memories digitally! No need to decide which photos to take home now, select your photos from the comfort of your home. Print, send and share your photos easily! Hurry, as supplies are limited.

*\*Terms and conditions apply. Photos captured on your vacation are only available for purchase during this cruise.*

## Connect @ Sea

We are now offering a NEW and improved Internet service to stay connected on your cruise like no other in the industry! Internet packages range from \$0.25 per MB - \$89.00 (1000 MB package). Possible service interruptions due to area configuration. For more information contact your Connect@Sea Expert or Guest Services onboard.

## CURRENCY EXCHANGE

Credit/debit cards are widely accepted & preferred in European ports of call, however, British Pounds & Euros will also be available for exchange at Guest Services, Deck 3, Midship. Please check with Guest Services for further information.

## TRANSPORTATION INFORMATION

Should you wish to purchase transportation to the London Gatwick or London Heathrow airports, kindly proceed to Guest Services on Deck 3, Midship 72 hours prior to disembarkation for further assistance.



What's your next adventure? Ask your friendly Port Adventures team about options for the upcoming ports of call. Don't forget to plan early for your exclusive Port Adventures. Stop by the **Port Adventures Desk on Deck 3, Midship** where our friendly team will assist you.

## SHOPPING

### ROYAL SEA PACKAGE

Does your Princess have more than one transformation reserved during this voyage? The Royal Sea Package contains multiple transformations in addition to unique offerings such as a Royal Rolling Trunk and a Keepsake Glass Slipper. Inquire about upgrading your experience to the Royal Sea Package by visiting the Bibbidi Bobbidi Boutique, Deck 10, Forward or by dialing extension 7-1492.

### THE DISNEY PARKS COLLECTION BY PANDORA JEWELRY

The Disney Parks Collection by PANDORA Jewelry features hand-finished .925 sterling silver and 14K gold charms inspired by some of Disney's most beloved characters. Visit White Caps on Deck 4, Forward, where you'll find a specially designed sterling silver charm featuring a Disney Cruise Line ship.

### FRAGRANCE OF THE DAY

Stop by White Caps to test our selected fragrance today! Deck 4, Forward.

### SOPHIA FIORI DISNEY INSPIRED JEWELRY

Discover the elegant Disney inspired diamond jewelry collection by Sophia Fiori, one of the world's leading designers of diamond jewelry when you visit White Caps, Deck 4, Forward.

### TRANSATLANTIC CROSSING

Commemorate this voyage on the Disney Magic with the various Disney Cruise Line merchandise available in the onboard shops, including tees, a postcard, a tumbler and more. Deck 4, Forward.

### THOMAS KINKADE: HIDDEN CHARACTER CHALLENGE!

Known as the "Painter of Light," Thomas Kinkade is one of Disney's most celebrated artists having created an array of enchanting artwork. Stop by the Vista Gallery today to view his unique collection of paintings featuring some of your favorite Disney characters! Also, take the time to try and find all of the hidden Disney characters scattered throughout his paintings. Are you up to the challenge? Deck 4, Midship.

## IMPORTANT INFORMATION

### Security Notice

All Guests (including Children) who wish to disembark or embark the ship are required to present their Key to the World card at the gangway. A passport is also required for all Guests wishing to go ashore. Guests under the age of 18 are required to have a parent, guardian or other responsible adult sign an authorization form at the Guest Service Desk if they wish to go ashore unaccompanied or with any adult from another stateroom.

### Insect Repellent Advisory

Protect against mosquito bites and related illnesses when going ashore. Insect repellent is available for purchase in White Caps. When using both sunscreen and insect repellent, use sunscreen first and apply insect repellent on top of sunscreen.

### Cold and Flu Reminder

Please wash hands frequently and thoroughly, particularly before meals. Contact the Health Center by dialing 7-1923, should anyone in your party become ill.

### Inclement Weather

For the safety of all Guests, outdoor events may be changed due to unforeseen weather conditions.

### Corridor Quiet Hours

As a courtesy to all our Guests, please recognize quiet hallway hours from 10:00 p.m. til 8:00 a.m.

### Environmental Message

With Disney's commitment to the Environment please refrain from throwing anything over the Ship's side. Thank you.

### No Reserved Seats Policy

As a courtesy to all Guests we kindly advise that the saving of seats is not permitted in the Walt Disney Theatre, and the saving of the sun loungers is not permitted on Deck 9 and 10. Items left unattended will be returned to lost and found at Guest Services, Deck 3, Midship.

### Smoking

For the comfort of our guests, the following areas are designated as smoking areas:

- Deck 9 Forward, Port Side
  - Deck 4, Starboard Side from 6:00 p.m. to 6:00 a.m. only (all of Deck 4 is non-smoking from 6:00 a.m. to 6:00 p.m.)
- Smoking is prohibited inside all guest staterooms and on stateroom verandahs. Guests found smoking in their staterooms or on their verandahs will be charged a \$250 stateroom recovery fee.

### Walt Disney Theatre

Theatrical performances may use artificial fog, strobe lights, pyrotechnics and other special effects. For the safety of our performers and the comfort of those around you, the use of any photography or video recording device or any electronic equipment is prohibited.

### Verandah Safety

Please do not leave any combustible materials on your balcony when not present in your stateroom for safety reasons.