

# PERSONAL NAVIGATOR

MONDAY, MAY 9, 2016

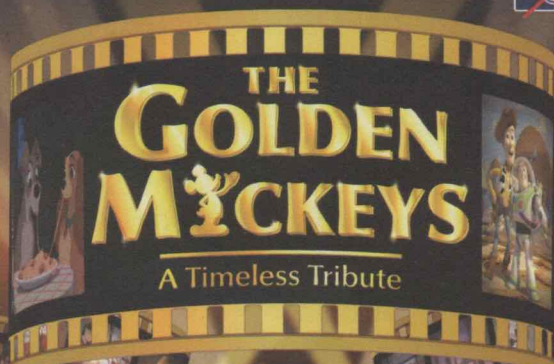
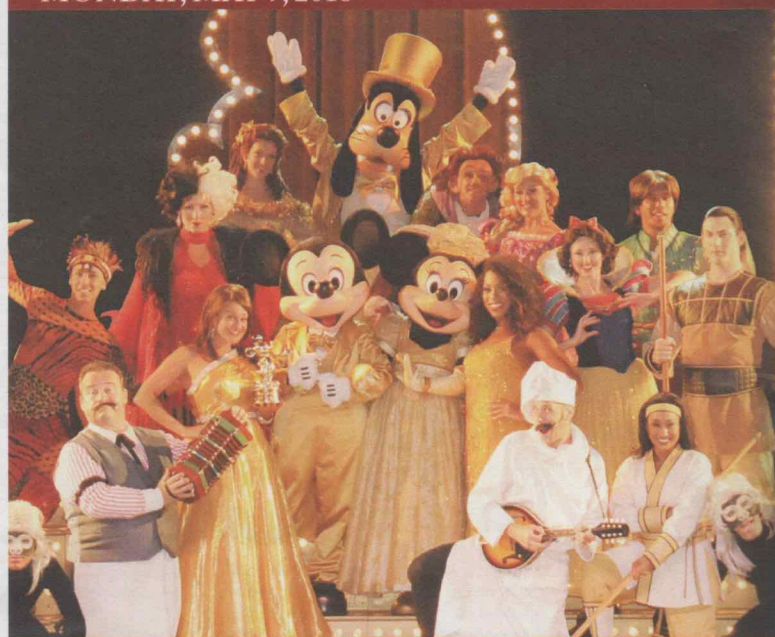
Sunrise: 6:36 am Sunset: 8:03 pm

Evening Attire: Cruise Casual

All Aboard: 3:45 pm

Today: Partly Sunny High: 82°F/28°C  
Tomorrow: Partly Cloudy High: 87°F/31°C

PORT CANAVERAL, FLORIDA



WALT DISNEY THEATRE

Deck 3 & 4, Forward

6:15 pm & 8:30 pm

As a courtesy to all Guests, we kindly advise that the saving of seats is **not** permitted in the Walt Disney Theatre.



Assistance available at the entrance to the Walt Disney Theatre 30 minutes prior to show time.

## Welcome Aboard!

### Your Stateroom & Luggage

Staterooms will be ready at 1:30 pm. Stateroom hosts will deliver luggage throughout the day until 5:30 pm.

### Staterooms with Bunk Beds

Bunk beds are recessed into the ceiling and will be prepared during evening turndown service by your Stateroom Host/ess.

### Stateroom Safe

Each stateroom is equipped with a secured storage safe. Instructions for use are located on the safe.

### To Change Dining Assignment

Requests for a different seating will be taken today:

- 1:00 pm - 3:30 pm; Book in Royal Palace
- 3:30 pm - 4:30 pm; Please call 7-1831, 7-1832, or 7-1833

### Remy & Palo Dining Reservations for Brunch & Dinner

Bookings will be taken on a first come basis today at:

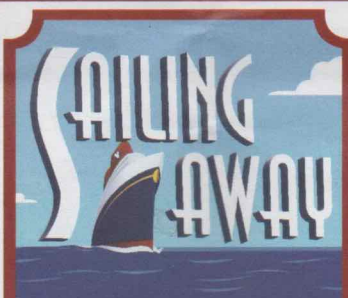
- 1:00 pm - 3:30 pm, Palo; Book in Royal Palace
- 1:00 pm - 3:30 pm, Remy; Book in Royal Palace

Reservations required & cover charge applicable. Please dial 7-9734, or 7-9735 for more information. Openings still available for tonight!

### Dinner

Please check your dining tickets for details of your dining rotation, and bring them to your specific dining location. There is no need to wait in line prior to dinner. Dining Rooms open at designated seating times and your table is reserved each night of your cruise.

- 5:45 pm - First seating
- 8:15 pm - Second seating



## FAMILY DECK PARTY

It's time to go Sailing Away!  
Join Mickey and Minnie along with Tinker Bell and the rest of the gang as they welcome you to your Disney Cruise Vacation.

Deck Stage,  
Deck 11, Midship,  
4:30 pm

## Don't Miss:

### Character Meet and Greet Ticket Distribution

Port Adventures Desk, Deck 5, Midship - 11:45 am - 2:00 pm

Pick up your tickets today to meet some of your favorite Disney friends.

- Princess Gathering
- Anna and Elsa

Tickets are required for each of these meet and greets. Space is limited.

### Walking Ship Tour

Preludes, Deck 3, Forward - 1:00 pm & 1:45 pm

(El tour del barco en Español sale a la 1:30 pm desde Mickey's Preludes, Piso 3, Forward)

Enjoy the beauty of the Disney Dream with your Cruise Staff in this guided tour.

### Family Fusion

D Lounge, Deck 4, Midship - 7:30 pm & 10:15 pm

Bring the entire family and test your Disney knowledge in the high-tech interactive game show, Family Fusion.

### Variety Show: Magic Dave (18+)

Evolution, Deck 4, Aft - 10:30 pm

Featuring the Magic & Comedy of Magic Dave, as he entertains you in this adult exclusive show.



### WELCOME ABOARD RAFFLE!

View your Embarkation photos starting at 7:00 pm and enter the raffle for a chance to win a digital photo package of 10 images worth \$149.95! Visit Shutters for all your photographic needs, from digital cameras, batteries, binoculars and accessories.

Terms and conditions apply. Visit Shutters on Deck 4, Midship.

## DINNER MENU

Animator's Palate: Pacific Rim Cuisine  
Enchanted Garden: Continental Market  
Royal Palace: French Dinner

## DRINK OF THE DAY

Bahama Mama (Alcoholic)  
Passion Cream Freeze  
(Non Alcoholic)

### IMPORTANT NUMBERS

Fire/Security: 7-3001  
Medical Emergency: 7-3000  
Health Center: 7-1923



## ADULT ACTIVITY HIGHLIGHTS



### SENSES SPA FITNESS CLASSES & SEMINARS

*Introduction to Acupuncture* - Senses Spa & Salon - 1:00 pm  
*Acupuncture Demonstration* - Senses Spa & Salon - 2:00 pm  
*Spa Raffle* - Senses Fitness Center - 3:00 pm  
*Kids Mc/Bath Pedit Party (Nom. Fee)* - Senses Spa & Salon - 4:30 pm  
*Complimentary Footprint Analysis* - Senses Spa & Salon - 4:30 pm  
*Acupuncture Tongue & Pulse Analysis* - Senses Spa & Salon - 5:00 pm

### BEVERAGE SEMINARS

Whiskey Tasting - Stem to Stern Wine Tasting - Martini Tasting  
 Cognac Tasting - Tequila & Margarita Tasting - Mixology

### TASTING CLASSES

*Whiskey Tasting* (21+) - Meridian - 10:00 pm  
 Please make reservations for tastings at Guest Services for a nominal fee.  
 Tasting Seminars are only for Guests 21 and older.



### 1820 SOCIETY: STIR IT. BLEND IT. TASTE IT.

*Cove Café, Deck 11, Forward - 10:00 pm*

Join us for a complimentary tasting event including coffee, chai latte and smoothies in Cove Café exclusively for our 18-20 year olds. You can learn how to create your own specialty coffees as well as plan the activities for the rest of your sailing.

### DREAM QUEST

*Evolution, Deck 4, Aft - 10:00 pm*

Enjoy the wildest and wackiest scavenger team event on the seven seas!

## CRUISE HIGHLIGHTS

### Monday

#### PORT CANAVERAL

*Port Departure: 5:00 pm*  
*All Aboard: 3:45 pm*  
*Attire: Cruise Casual*

#### THE GOLDEN MICKEYS

*Walt Disney Theatre*  
 6:15 pm & 8:30 pm

### Tuesday

#### NASSAU

*All Ashore: 9:30 am*  
*All Aboard: 5:15 pm*  
*Attire: Optional Dress Up*

#### VILLAINS TONIGHT!

*Walt Disney Theatre*  
 6:15 pm & 8:30 pm

### Wednesday

#### DISNEY CASTAWAY CAY

*All Ashore: 8:30 am*  
*All Aboard: 4:45 pm*  
*Attire: Pirate or Cruise Casual*

#### SHOWTIME: MAGIC DAVE

*Walt Disney Theatre*  
 6:15 pm & 8:30 pm

### Thursday

#### DAY AT SEA

*Attire: Cruise Casual*

#### DISNEY'S BELIEVE

*Walt Disney Theatre*  
 6:15 pm & 8:30 pm

Subject to change.

## FUN FOR ALL AGES HIGHLIGHTS



### CASTAWAY CAY 5K REGISTRATION (10+)

Sign up today for the Castaway Cay 5K! Please visit the Port Adventures Desk or the Guest Services Desk to register at anytime prior to our arrival at Disney Castaway Cay. Please note that runners must be 10 years of age or older to participate.



### DISNEY VACATION CLUB MEMBERS CELEBRATION

*D Lounge, Deck 4, Midship - 2:30 pm*

Members! Mix and mingle with other Members and learn how you can enhance your Membership! Please see a Disney Vacation Club representative on Deck 4, Midship, or call 7-2805 from your stateroom phone for more information.

### PORT SHOPPING TALK

*Buena Vista Theatre, Deck 4 & 5, Midship - 2:45 pm*

Join your Port Shopping Guides to learn about the incredible tax & duty free shopping ashore this cruise! Free charm bracelet for all in attendance and a raffle to win a diamond pendant!



### SAILING AWAY

*Deck 11 Stage, Deck 11, Midship - 4:30 pm*

It's time to go Sailing Away! Join Mickey and Minnie along with Tinker Bell and the rest of the gang as they welcome you to your Disney Cruise Vacation.

### \$3,000 MEGA JACKPOT BINGO

*Bingo Pre-Sales start at 7:15 pm*

*Evolution, Deck 4, Aft - 7:30 pm*

It's your chance to take home \$3,000 if you can cover your card in 46 numbers or less! Plus 4 cash prizes up for grabs and your chance to win a diamond pendant! Everyone attending will also receive a voucher to collect a free Diamonds International charm bracelet! Pre-Sales start 15 minutes prior to game.



### DISNEY ANIMATION: CREATING A CHARACTER

*D Lounge, Deck 4, Midship - 9:45 pm*

Go behind the scenes at Walt Disney Animation Studios as Walt Disney himself talks about his most famous characters, then learn the basic techniques of drawing your favorite pals in this fun and interesting enrichment program.



### FAMILY SUPERSTAR KARAOKE

*D Lounge, Deck 4, Midship - 10:45 pm*

Join your Cruise Staff in D Lounge tonight and sing along to your favorite song - fun for everyone.

## FEATURED VARIETY ACT THIS VOYAGE



### MAGIC AND COMEDY OF MAGIC DAVE

Considered to be one of the world's most talented magicians, David Williamson dazzles audiences with a unique and delightful brand of entertainment, blending heart stopping magic with side splitting hilarity. David is an international award-winning magician. David has also served as an illusion consultant for both David Copperfield and David Blaine.





## YOUTH ACTIVITIES HIGHLIGHTS

### Dine & Play

A convenience for families dining at 8:15 pm, our Youth Activities counselors will be available at 9:15 pm at the entrance of Royal Palace, Enchanted Garden and Animator's Palate dining rooms to bring registered children to join the fun in the Youth Activities areas.

### Youth Activities Open House

Open House is an opportunity for all to come and participate in a variety of exciting activities and free time in the Oceaneer Club, Oceaneer Lab, Edge and Vibe throughout the cruise. During these times secured programming will still be offered in the other venue for those looking to check their children into care.

### Pre-School Fun

Disney's Oceaneer Club is reserved for only those between 3-5 yrs of age. This is a time for them to become acclimated to the Disney's Oceaneer Club, make new friends and join in lots of fun filled programs and activities. Please note after Pre-School Fun has concluded, the Disney's Oceaneer Club will be open for Secured Programming for those ages 3-12.



**Deck 5, Midship (7-5864) 5:30 pm - 12:00 am**

Infants and Toddlers can enjoy toys and activities at it's a small world nursery. Reservations are first come, first served so please stop by!



**Deck 5, Midship (7-1440)**  
(3 - 12 years old)

**6:30 pm - 12:00 am**

### STAR WARS SAGA: TALES FROM A GALAXY FAR FAR AWAY

7:00 pm

Watch as a Storyteller recruits kids to help retell the tales from the Star Wars Saga, in this exciting, funny, and immersive experience.



**Deck 5, Midship (7-1445)**  
(3 - 12 years old)

**5:30 pm - 12:00 am**

### ICE BREAKERS

7:00 pm

Fancy some fun? Want to get to know your fellow guests? Then join us as we break the ice.



**Deck 13, Midship (7-9743) 6:00 pm - 1:00 am**  
(11-14 YEAR OLDS)

### TAKING IT TO THE EDGE

10:00 pm

Come to Edge and get all the info you need to squeeze every bit of fun out of your stay onboard.



**Entrance on Deck 4, Forward (7-9417)**  
**6:00 pm - 1:00 am**

(14-17 YEAR OLDS)

### MAGIC SHOW

10:00 pm

The Magnificent Magician will demonstrate to you some of the best known magic tricks on the sea.

## BUENA VISTA THEATRE

Deck 4 & 5, Midship

### Feature Movies this Voyage

#### MONDAY - PORT CANAVERAL

5:30 pm	PG	The Good Dinosaur	DOLBY 3D
8:30 pm	PG	The Good Dinosaur	DOLBY 3D
10:30 pm	PG	The Jungle Book (2016)	DOLBY 3D

#### TUESDAY - NASSAU

10:15 am	PG-13	Captain America: Civil War	
1:45 pm	PG-13	Captain America: Civil War	DOLBY 3D
5:45 pm	PG	The Jungle Book (2016)	
8:15 pm	PG	The Jungle Book (2016)	
10:30 pm	PG-13	Star Wars: The Force Awakens	DOLBY 3D

#### WEDNESDAY - DISNEY CASTAWAY CAY

8:30 am	PG	The Jungle Book (2016)	Open Captioning
10:45 am	PG	The Good Dinosaur	
12:45 pm	PG	Zootopia	
3:00 pm	PG	The Jungle Book (2016)	DOLBY 3D
5:15 pm	PG-13	Star Wars: The Force Awakens	
8:00 pm	PG-13	Star Wars: The Force Awakens	
10:45 pm	PG-13	Captain America: Civil War	DOLBY 3D

#### THURSDAY - DAY AT SEA

8:30 am	PG	Family Movie Fun Time: Zootopia	
10:30 am	PG-13	Captain America: Civil War	
1:45 pm	PG	The Jungle Book (2016)	
6:00 pm	PG	Zootopia	DOLBY 3D
8:15 pm	PG	Zootopia	DOLBY 3D
11:00 pm	PG-13	Captain America: Civil War	

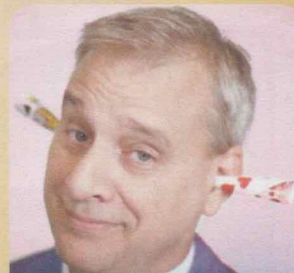
Subject to change.



### FAMILY GAME SHOW

Bring the entire family and test your Disney knowledge in the high-tech interactive game show, Family Fusion.

**D Lounge,**  
**Deck 4, Midship,**  
**7:30 pm & 10:15 pm**



### ADULT VARIETY ACT

Featuring the Magic & Comedy of Magic Dave, as he entertains you in this adult exclusive show.

**Evolution (18+),**  
**Deck 4, Aft,**  
**10:30 pm**



# MORE TO ENJOY WHILE ONBOARD

## ADVENTURES BY DISNEY® SAVINGS

Choose from over two-dozen guided family vacations on six continents! Find out how onboard Adventures by Disney® savings can help make your dream destination a reality. Visit the Disney Vacation Planning Center, Deck 4, Midship.

## DISNEY VACATION CLUB® MEMBERS CELEBRATION

Members! Mix and mingle with other Members and learn how you can enhance your Membership! Please see a Disney Vacation Club representative on Deck 4, Midship, or call 7-2805 from your stateroom phone for more information.

## PORT SHOPPING INFORMATION

Join your Port Shopping Guides Kyle & Hannah today at 2:45 pm in the Buena Vista Theatre to learn about the incredible shopping ashore in Nassau! Over \$1,000 in give-a-ways and prizes! Arrive early for free gifts and more!



## RAINFOREST DELUXE CRUISE PASS

Enjoy our scented showers, aroma steam, sauna rooms and private jacuzzi overlooking the ocean. Also, read a nice book on the warm loungers! Unlimited entry when you purchase your cruise pass today!

Couples \$144.00 and Singles \$101.00  
Limited number of passes on sale!

**Senses Spa & Salon, Deck 11, Forward**  
**Ext. 7-1465**

## Bibbidi Bobbidi Boutique

A makeover fit for a princess!

Fairy Godmothers-in-Training are ready with magic and pixie dust to give your Prince and Princess the transformation of a lifetime.

Make your reservations by visiting Bibbidi Bobbidi Boutique, Deck 5, Midship or dialing extension 7-9438. Limited space available.



## SAY CHEESE!

Professional Portraits, Lobby Atrium, Deck 3, Midship.

Lifestyle - Six Guests maximum

7:15 pm - 8:30 pm & 9:30 pm - 10:15 pm

**Larger Groups - Please contact the Shutters team on Deck 4 for an appointment**

*\*Please note that photos are available for viewing on our interactive photo kiosks approximately five hours after being taken and are only available for purchase during this cruise.*

## RELIGIOUS SERVICES

Groups who need a location to practice their faith may contact Guest Services for availability information.

## Connect @ Sea

Sign up for a free 50 MB Internet package today and enjoy it throughout the cruise! This offer is only available from noon to midnight on the day your cruise begins. On your wireless device, find the "DCL-Guest" Wi-Fi Network, go to [www.dclguest.com](http://www.dclguest.com) to create an account, and get your free 50 MB of data to start sharing your memories even before you leave port! No purchase necessary. The free 50 MB package can only be used for the duration of the cruise. Only one free package per stateroom, but everyone can share it. Unused data from a package will not be reimbursed and it is non-transferable between voyages or ships.

Disney Cruise Line

## PORT ADVENTURES

From a visit to the world-renowned Atlantis Resort in Nassau to parasailing high above the turquoise waters around Castaway Cay, there is an adventure for everyone on your Disney Dream cruise. Visit the friendly team at the Port Adventures Desk, Deck 5, Midship, to learn more about these, and many more Port Adventures.

## SHOPPING

### BIBBIDI BOBBIDI BOUTIQUE

A makeover fit for a princess! Fairy Godmothers-in-Training are ready with magic and pixie dust to give your Prince and Princess the transformation of a lifetime. Make your reservations by visiting Bibbidi Bobbidi Boutique, Deck 5, Midship or dialing extension 7-9438. Limited space available.

### INNOVATIVE DESIGNS BY CITIZEN WATCHES

It starts with a simple, yet revolutionary concept: a watch that never needs a battery. Citizen Eco-Drive technology harnesses the power of light from any natural or artificial light source and converts to energy. See the Collection of Men's and Ladies' watches available in White Caps, Deck 3, Forward.

### EVERYTHING PRINCESS AT MICKEY'S MAINSAIL

Are you cruising with a young, aspiring Princess? Stop by Mickey's Mainsail for all things Disney Princess including dresses and accessories. Whether your princess dreams in the style of Cinderella, Belle, or Tiana, Mickey's Mainsail has everything you need to be royal ready! Deck 3, Forward.

### VANELLOPE'S SWEETS AND TREATS

Race on over to Vanellope's Sweets and Treats where you can have your fill of assorted candy, delectable novelty treats, and handmade gelato and ice cream! Deck 11, Aft.

Due to port regulations, when the ship is docked, the stores will remain closed.

DISNEY 05-09-2016 ©DISNEY

## IMPORTANT INFORMATION

### Security Notice

All Guests (including children) who wish to disembark the ship are required to present their Key to the World card at the gangway. A photo ID is also required for those Guests who are 18 years of age or older. Guests under the age of 18 are required to be accompanied by a parent, guardian or other responsible adult sign an authorization form at the Guest Service Desk if they wish to go ashore unaccompanied or with any adult from another stateroom.

For the safety of all Guests, outdoor events may be changed due to unforeseen weather.

### Cold and Flu Reminder

Please wash hands frequently and thoroughly, particularly before meals. Contact the Health Center by dialing 7-1923, should anyone in your party become ill.

### Corridor Quiet Hours

As a courtesy to all our Guests, please recognize quiet hallway hours from 10:00 pm - 8:00 am.

### Insect Repellent Advisory

Protect against mosquito bites and related illnesses when going ashore. Insect repellent is available for purchase in White Caps. When using both sunscreen and insect repellent, use sunscreen first and apply insect repellent on top of sunscreen.

### Environmental Message

With Disney's commitment to the environment, please refrain from throwing anything over the ship's side. Thank you!

### No Reserved Seats Policy

As a courtesy to all our Guests, we kindly advise that the saving of seats is not permitted in the Walt Disney Theatre, and the saving of the sun loungers is not permitted on Deck 11, 12 and 13. Items left unattended will be returned to lost and found at Guest Services, Deck 3, Midship.

### Smoking

For the comfort of our guests the following areas are designated as Smoking areas:

- Deck 13, Forward, port side, by "Currents"
- Deck 12, Aft, port side outdoor area that is accessible through the Meridian Lounge
- Deck 4, Aft, port side, the outside Promenade Deck from 6:00 pm to 6:00 am only (all of Deck 4 is no smoking from 6:00 am to 6:00 pm).
- Smoking is prohibited inside all Guest staterooms and on stateroom verandahs. Guests found smoking in their staterooms or on their verandahs will be charged a \$250 stateroom recovery fee. Electronic cigarettes may only be used in designated smoking areas.

### Walt Disney Theatre

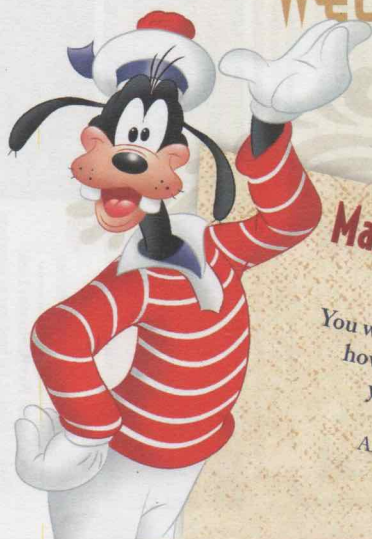
Theatrical performances may use artificial fog, strobe lights, pyrotechnics and other special effects. For the safety of our performers and the comfort of those around you, the use of any photography, video recording devices or any electronic equipment is prohibited.

### Verandah Safety

Please do not leave any combustible materials on your balcony when not present in your stateroom for safety reasons.



# WELCOME ABOARD!



## Mandatory Guest Assembly Drill

**4:00 PM**

(All Guests must attend)  
You will not need to wear your life jacket,  
however it is critical that you bring  
your Key To The World card  
to your Assembly Station.  
All ship services will be suspended  
between 3:45 and 4:30 pm.

Your Assembly Station  
is indicated on your  
Key To The World card.



### SAILING AWAY

It's time to go Sailing Away!  
Join Mickey and Minnie along  
with Tinker Bell and the rest of  
the gang as they welcome you  
aboard the Disney Dream.

**Deck Stage,  
Deck 11, Midship,  
4:30 pm**

Symbol for activities that will  
be repeated during the cruise  
↔

Afternoon	1:45	2:00	2:15	2:30	2:45	3:00	3:15	3:30	3:45	4:00	4:15	4:30	4:45	5:00	5:15	5:30	5:45	6:00	6:15	6:30	6:45
FUNNEL VISION	Frozen (PG) Funnel Vision								Sailing Away Funnel Vision								Toy Story (G) Funnel Vision				
BUENA VISTA THEATRE	Port Shopping Talk Buena Vista Theatre								The Good Dinosaur (PG) <b>DOLBY 3D</b> Duration: 1 Hour 40 Minutes												
CHARACTERS									Goofy Deck 4, Balcony								Mickey Deck 4, Balcony				
FUN FOR ALL AGES	Walking Ship Tour Preludes < Earlier tour at 1:00pm Tour del Barco Preludes < Inicia 1:30 pm								Live Music with Summer Breeze Lobby Atrium								Red Carpet Arrivals				
ADULTS	Acupuncture Demonstration Senses Spa & Salon								Live Violin with Ievgeniia District Lounge								Live Piano with Ed Kelly Pink: Wine and Champagne Bar				
VIBE 14-17 YEARS OLD	Youth Activities Open House								Youth Activities Open House								Open for Teens				
EDGE 11-14 YEARS OLD	Youth Activities Open House								Youth Activities Open House								Open for Tweens				
OCEANEER LAB 3-12 YEARS OLD	Youth Activities Open House & Registration								Youth Activities Open House & Registration								Meet Your Counselors				
OCEANEER CLUB 3-12 YEARS OLD	Youth Activities Open House & Registration								Open House & Registration Choose Your Cruise Pre-School Fun (3-5 Years Old)								Open For Secured Activities				

Disney  
**DREAM**

Evening	7:00	7:15	7:30	7:45	8:00	8:15	8:30	8:45	9:00	9:15	9:30	9:45	10:00	10:15	10:30	10:45	11:00	11:15	11:30	11:45	12:00
FUNNEL VISION	The Little Mermaid (G) Funnel Vision								Ratatouille (G) Funnel Vision												
BUENA VISTA THEATRE	The Good Dinosaur (PG) <b>DOLBY 3D</b> Duration: 1 Hour 40 Minutes								The Jungle Book (2016) (PG) <b>DOLBY 3D</b> Duration: 1 Hour 46 Minutes												
CHARACTERS	Tiana Lobby Atrium (V)								Mickey Mouse Deck 4, Balcony								Minnie Mouse Lobby Atrium (H)				
FUN FOR ALL AGES	Bingo Pre Sales								Live Music with Summer Breeze Lobby Atrium								Family Fusion D Lounge				
ADULTS	Movie Quotes Trivia Pub 687								The Vitos LIVE District Lounge								Ice Breakers Evolution				
VIBE 14-17 YEARS OLD	Open for Teens								Open for Teens								Open for Teens				
EDGE 11-14 YEARS OLD	Open for Tweens								Open for Tweens								Open for Tweens				
OCEANEER LAB 3-12 YEARS OLD	Ice Breakers								Choose Your Cruise								GAGA Ball				

Fold along the dotted lines and take me with you  
so you don't miss any of the fun!

YOUTH ACTIVITIES OPEN HOUSE  
non-secured program with activities for families,  
kids and children to enjoy together.