

PERSONAL NAVIGATOR

WEDNESDAY, MARCH 30, 2016

Sunrise: 6:16 am Sunset: 6:34 pm
Evening Attire: Cruise Casual
All Ashore: 7:45 am All Aboard: 4:00 pm

Today: Partly Cloudy High: 78°F/26°C
Tomorrow: Sunny High: 86°F/30°C

ST. THOMAS, U.S. VIRGIN ISLANDS

THE MAGIC & ILLUSION OF SHAWN FARQUHAR

WALT DISNEY THEATRE

Deck 3 & 4 Forward
6:15 pm & 8:30 pm



As a courtesy to all Guests, we kindly advise that the saving of seats is **not** permitted in the Walt Disney Theatre.



Assistance available at the entrance to the Walt Disney Theatre 30 minutes prior to show time.



St. Thomas Port Information

Once largely occupied by Dutch-owned sugar cane plantations and pirates of the Caribbean, St. Thomas and St. John of the U.S. Virgin Islands are some of the most popular tropical tourist destinations in the world. A destination that boasts so many sites for sport, relaxation and leisure has a culture that is still influenced in ways by its agricultural and native past.

Two-thirds of the island of St. John, a short ferry ride from St. Thomas, is a National Park. Not only is this part of the island the most beautiful it is also the most serene, surrounded by shimmering bays and beaches.

A place so celebrated today for its pristine tranquility and peaceful way of life was—for 150 years—a notorious pirate post before the islands were conquered by the Dutch West Indian Company.

The islands have seen a steady rise in tourism since, and today, there is an entire world of leisure and adventure to explore on St. Thomas and St. John.



ADULT QUIZ

Have you been told you are full of useless information about pop culture? If the answer is "Yes", then you have what it takes to play the high energy game show all about the world of Pop!

The Tube (18+),
Deck 4, Aft,
10:00 pm

Don't Miss:

Catholic Prayer Service

Outlook, Deck 14, Midship - 8:00 am
Join us for Catholic Prayer Service.

The Quest

The Tube, Deck 4, Aft - 7:30 pm
Enjoy the wildest and wackiest scavenger team event on the seven seas!

Family Fusion

D Lounge, Deck 4, Midship - 10:15 pm
Bring the entire family and test your Disney knowledge in the high-tech interactive game show, Family Fusion.

80's Music Challenge (18+)

The Tube, Deck 4, Aft - 10:30 pm
"Moon Walk" back to the 80's as we put your musical knowledge of the decade to the test.

London Rocks (18+)

The Tube, Deck 4, Aft - 11:00 pm
Hop onboard and hit the dance floor as we take you on a ride through the charts, partying it up to some of the hottest British hits! With a special performance by the Underground Dancers.

DOCKING

The ship docks at Havensight Mall Dock, which is also known as West Indian Company Dock.

Disney Cruise Line

PORT ADVENTURES

Please check your tour tickets for meeting times and locations.
Visit the Port Adventures desk, Deck 5, Midship for any questions.

DINNER MENU

Animator's Palate : Prince & Princess
Enchanted Garden : Prince & Princess
Royal Court : Prince & Princess

DRINK OF THE DAY

Mai Tai (Alcoholic)
Cranberry No-Jito (Non-Alcoholic)

IMPORTANT NUMBERS

Fire/Security: 7-3001
Medical Emergency: 7-3000
Health Center: 7-1923

ADULT ACTIVITY HIGHLIGHTS



SENSES SPA FITNESS CLASSES & SEMINARS

Sunrise Stretch - Senses Fitness Center - 7:00 am

Fab Abs - Senses Fitness Center - 8:30 am

Complimentary Footprint Analysis - Senses Fitness Center - 9:00 am & 6:00 pm

Seminar: Burn Fat Faster - Senses Spa & Salon - 4:00 pm

Acupuncture: Chinese Herbs - Senses Spa & Salon - 4:30 pm

Pure Form Pilates - Senses Fitness Center - 5:00 pm



1820 SOCIETY: GIANT JENGA

O'Gills Pub, Deck 4, Aft - 4:15 pm

Have some fun with this classic game.



ESPN DREAM TEAM DRAFT DAY - BASKETBALL

O'Gills Pub, Deck 4, Aft - 2:45 pm

Join the "Commissioner" and engage in this interactive fantasy basketball draft unlike anything you've ever seen! Can YOU draft the greatest basketball team of all-time?

LIVE PIANO WITH AARON LOTZOW

La Piazza, Deck 4, Aft - 7:30 pm

O'Gills Pub, Deck 4, Aft - 10:00 pm & 11:00 pm

Join Aaron Lotzow as he plays piano live for your listening pleasure.

SENTIMENTAL JOURNEY WITH FINE WHINES

La Piazza, Deck 4, Aft - 9:30 pm

Join Fine Whines as they play live tonight for your listening pleasure.



POP!

The Tube, Deck 4, Aft - 10:00 pm

Have you been told you are full of useless information about pop culture? If the answer is "Yes", then you have what it takes to play the high energy game show all about the world of Pop!



80'S MUSIC CHALLENGE

The Tube, Deck 4, Aft - 10:30 pm

"Moon Walk" back to the 80's as we put your musical knowledge of the decade to the test.

80'S/90'S REMIX WITH CLUB DJ AKSHEN

The Tube, Deck 4, Aft - 11:30 pm

Join Club DJ Akshen, as he spins the tunes and remixes the 80's & 90's!

FUN FOR ALL AGES HIGHLIGHTS



CHIP-IT GOLF (12+)

Lobby Atrium, Deck 3, Midship - 2:00 pm

It's par for the course for our Guests 12 and older to compete on our special "greens" in this fun tournament.

DISNEY TRIVIA

La Piazza, Deck 4, Aft - 2:45 pm

Navigate your way through a round of questions to test how much you really know about Disney.



DISNEY CHANNEL ON DECK

Deck 11 Stage, Deck 11, Midship - 4:30 pm

Don't change that channel! It's time for a Disney Channel afternoon poolside! Your Cruise Staff will host an exciting day of games and contests in between your favorite Disney Channel shows! So sit back, relax, and enjoy the sun!



DISNEY ANIMATION: PERSISTENCE OF VISION

D Lounge, Deck 4, Midship - 6:15 pm & 8:30 pm

Go behind the scenes at Walt Disney Animation Studios and learn the principles that make animation work, and try your hand at creating your own easy animation demonstration in this fun and fascinating enrichment program.

FAMILY DANCE PARTY

The Tube, Deck 4, Aft - 7:00 pm

Bring the whole family and dance your cares away to some of your favorite hits!

THE QUEST

The Tube, Deck 4, Aft - 7:30 pm

Enjoy the wildest and wackiest scavenger team event on the seven seas!



DOUBLE UP JACKPOT BINGO

Bingo Pre-Sales start at 7:15 pm

D Lounge, Deck 4, Midship - 7:30 pm

Special double up session: All electronic cards purchased will be doubled! The snowball jackpot continues to grow and could be won today! Pre-Sales start 15 minutes prior to the game.



FAMILY SUPERSTAR KARAOKE

D Lounge, Deck 4, Midship - 9:30 pm & 10:45 pm

Join your Cruise Staff in D Lounge tonight and sing along to your favorite song - fun for everyone.



FAMILY FUSION

D Lounge, Deck 4, Midship - 10:15 pm

Bring the entire family and test your Disney knowledge in the high-tech interactive game show, Family Fusion.

SAFETY ASHORE INFORMATION

While you will find many great experiences ashore, please remain vigilant about your personal safety and the safety of your belongings. As in any large urban tourist destination, you'll want to take some basic precautions to make the most of your time ashore.

- Be aware of your surroundings at all times. Avoid short cuts, narrow alleys and poorly lit streets.
- Avoid wandering from the main shopping and tourist areas into unfamiliar territory. If venturing out independently, have a plan, use only licensed taxi operators.
- Identity/Credit Card theft can occur anywhere. Please remain vigilant in monitoring the safe keeping of your personal information.
- Leave valuables in your room safe and avoid carrying large amounts of cash. Exercise caution when using ATMs. Cameras and handbags should be carried close to your body or concealed out of sight.
- Leave air transportation tickets and other travel documents in your room safe. When going ashore, each adult is required to carry a Driver's license, passport or other government-issued photo ID. - Note: Some ports may require guests to carry passports ashore.
- Most crimes are easier to commit in dark unlit areas. When going ashore at night, please be extra vigilant about your personal safety.

YOUTH ACTIVITY HIGHLIGHTS

DINE & PLAY

A convenience for families dining at 8:15 pm, our Youth Activities counselors will be available at 9:15 pm at the entrance of Royal Court, Enchanted Garden and Animator's Palate dining rooms to bring registered children to join the fun in the Youth Activity areas.



Deck 5, Midship (7-1440)

(3-12 years old) 10:00 am - 12:00 am

ANIMATION ANTICS

1:00 pm

Learn simple animation techniques and then put your new skills to use by drawing some of your favorite Disney Characters.

BIG TOP FUN FEST!

6:15 pm

It's the greatest show on Earth. Come re-discover the circus Disney style with clowns, jugglers and classic Disney cartoons.



Deck 5, Midship (7-1445)

(3-12 years old) 7:30 am - 12:00 am

DETECTIVE SCHOOL

4:00 pm

It's a crime how much fun you'll have as you go CSI Goofy style.

SUPER SLOPPY SCIENCE

7:30 pm

Join Professor Make-O-Mess in some of the most extreme experiments you will ever see in the world of Super Sloppy Science!



Deck 13, Midship (7-9743)

(11-14 years old) 10:00 am - 1:00 am

ICE CREAM SOCIAL

3:15 pm

I scream, you scream, we all scream for ice cream! Make your own frosty treat with your Counselors.

GENDER WARS

10:00 pm

Join us as we find out who really are the kings or queens of the castle.



Entrance on Deck 4, Forward (7-9418)

(14-17 years old) 12:00 pm - 2:00 am

DISNEY ANIMATION: CREATING A CHARACTER

4:30 pm

Go behind the scenes at Walt Disney Animation Studios as Walt Disney himself talks about his most famous characters, then learn the basic techniques of drawing Mickey and Donald in this fun and interesting enrichment program.

MAGIC SHOW

11:00 pm

The Magnificent Magician will demonstrate to you some of the best known magic tricks on the sea.

BUENA VISTA THEATRE

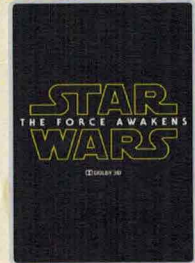
Deck 4 & 5, Midship
Today's Movies



11:30 am
Duration: 2 hrs 15 mins
Rating: PG-13

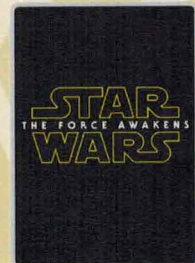


DOLBY 3D
5:30 pm & 8:30 pm
Duration: 1 hr 40 mins
Rating: PG



DOLBY 3D

2:30 pm
Duration: 2 hrs 16 mins
Rating: PG-13



10:45 pm
Duration: 2 hrs 16 mins
Rating: PG-13



FAMILY DECK PARTY

Don't change that channel! It's time for a Disney Channel afternoon poolside! Your cruise staff will host an exciting day of games and contests in between your favorite Disney Channel shows! So sit back, relax, and enjoy the sun!

Deck Stage,
Deck 11, Midship,
4:30 pm



ADULT THEME NIGHT

Hop onboard and hit the dance floor as we take you on a ride through the charts, partying it up to some of the hottest British hits!

The Tube (18+),
Deck 4, Aft,
11:00 pm

YOUTH ACTIVITIES OPEN HOUSE

Open House is an opportunity for all to come and participate in a variety of exciting activities and free time in the Oceaneer Club, Oceaneer Lab, it's a small world nursery, Vibe and Edge throughout the cruise. During these times secured programming will still be offered in the other venue for those looking to check their children into care.

Disney's Oceaneer Club: 10:00 am - 1:00 pm & 11:00 pm - 12:00 am

Disney's Oceaneer Lab: 1:00 pm - 2:30 pm

Edge: 10:00 am - 11:00 am & 7:30 pm - 9:00 pm

Vibe: 6:00 pm - 7:30 pm

MORE TO ENJOY WHILE ONBOARD



BAHAMIAN VOYAGES

The Bahamas are renowned for breathtaking beaches, incredible recreation and exceptional shopping experiences. Pair your tropical escape with the world-class comfort and service of a Disney cruise and make your getaway complete. Visit the Disney Vacation Planning desk, Deck 4, Midship, for more information.



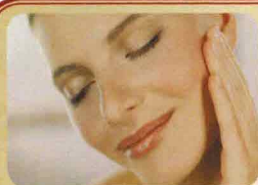
DISNEY VACATION CLUB® GROUP PREVIEW

Want to learn more about taking magical vacations year after year? Please see a Disney Vacation Club representative on Deck 4, Midship, or call 7-2805 from your stateroom phone for more information about our interactive group presentation.



PORT SHOPPING INFORMATION

St. Thomas is not to be missed, offering some of the best shopping this cruise! Take a taxi to downtown St. Thomas and meet your Port Shopping Guides Candice & Mark, in Diamonds International Store #1a between 10:00 am -12:00 pm. Remember to pick up your Port Shopping Map & Coupons on the gangway! Watch Channel 9 for more St. Thomas Information!



SENSES
SPA & SALON

PAMPER PACKAGE

- 50 minute Full Body Massage
- Foot & Ankle Massage
- Indian Scalp Massage
- 25 Minute Booster Facial

ONLY \$149

Call Senses Spa & Salon, 7-1465

Onofrio D. Oro on Fifth -Fine Jewelry-

Discover the beautiful
nature-inspired fine jewelry
collection by Onofrio D. Oro



White Caps
Deck 3, Forward



PHOTO BOOK

Visit Shutters today and turn your magical vacation memories into an impressive keepsake with a personalized, one-of-a-kind PhotoBook. Fill every page with wonderful memories of your family during this festive cruise. Orders close at 10:30 pm on the last day of the cruise. Supplies are limited.

Please use the PHOTOFINDER tab on the kiosk or ask for assistance from a friendly photographer to help locate missing images.

**Terms and conditions apply. The Photo Book is only available for purchase during this cruise.*

Connect@Sea

We are now offering a NEW and improved Internet service to stay connected on your cruise like no other in the industry! Internet packages range from \$0.25 per MB - \$89.00 (1000 MB package). For more information contact your Connect@Sea Expert or Guest Services onboard.

ONBOARD AIRLINE CHECK IN

Stop by the Guest Services Desk, Deck 3, Midship to find out about enrolling in our Onboard Airline Check In Service.

FREE ON DEMAND TV

Watch Disney movies, Hollywood features, ABC shows, and even captioned content, plus much more "On Demand" for FREE in the comfort of your stateroom! Bookmark your movie and come back to watch it later. Press MENU on your stateroom television remote control and follow the prompts.



Your Port Adventures Desk is open this morning for your last minute St. Thomas reservations. Let us take care of everything from Magen's Bay to island tours to St. John where you can sail and snorkel - your tour can even leave you time for shopping at the end! Don't forget to reserve space for the trip to St. John and its beautiful Trunk Bay beach. For the more adventurous, join us for one of the many Catamaran Sail and Snorkel excursions. Your friendly Port Adventures team are here to help.

SHOPPING

DISNEY CRUISE LINE® DOONEY & BOURKE HANDBAGS

Swing by White Caps and commemorate your cruise with style with the new nautical themed Disney Cruise Line® Dooney & Bourke handbag collection. Deck 3, Forward.

ONOFRIO D. ORO ON FIFTH FINE JEWELRY

Perfect for the animal lover in your life, head to White Caps, Deck 3, Forward, where you'll discover the beautiful nature-inspired fine jewelry collection by Onofrio D. Oro on Fifth.

INNOVATIVE DESIGNS BY CITIZEN WATCHES

It starts with a simple, yet revolutionary concept: a watch that never needs a battery. Citizen Eco-Drive technology harnesses the power of light from any natural or artificial light source and converts to energy. See the Collection of Men's and Ladies' watches available in White Caps, Deck 3, Forward.

BIBBIDI BOBBIDI BOUTIQUE

Does your Princess have more than one transformation reserved during this voyage? The Royal Sea Package contains multiple transformations in addition to unique offerings such as a Royal Rolling Trunk and a Keepsake Glass Slipper. Inquire about upgrading your experience to the Royal Sea Package by visiting the Bibbidi Bobbidi Boutique or by dialing extension 7-9438.

PRECIOUS DISNEY PLUSHES

Cuddle up with some of your favorite Disney pals when you swing by Mickey's Mainsail and discover a lovable, soft Plush. From Stitch to Mickey and Minnie, you'll be sure to find a new cuddly friend to take home. Deck 3, Forward.

DISNEY PINS SPECIAL OFFER

Fans of Disney Pins can swing by Mickey's Mainsail, Deck 3, Forward, for a wide selection of Disney and Disney Cruise Line trading pins. Purchase a Disney Cruise Line Life Preserver Pin for \$4.95 with any merchandise purchase of \$30.00 or more. While supplies last. Restrictions apply. Offer subject to change without notice.

Due to port regulations, when the ship is docked, the stores will remain closed.

IMPORTANT INFORMATION

Security Notice

All Guests (including children) who wish to disembark the ship are required to present their Key to the World card at the gangway. A photo ID is also required for those Guests who are 18 years of age or older. Guests under the age of 18 are required to have a parent, guardian or other responsible adult sign an authorization form at the Guest Service Desk if they wish to go ashore unaccompanied or with any adult from another stateroom.

Insect Repellent Advisory

Protect against mosquito bites and related illnesses when going ashore. Insect repellent is available for purchase in White Caps. When using both sunscreen and insect repellent, use sunscreen first and apply insect repellent on top of sunscreen.

Cold and Flu Reminder

Please wash hands frequently and thoroughly, particularly before meals. Contact the Health Center by dialing 7-1923, should anyone in your party become ill.

Corridor Quiet Hours

As a courtesy to all our Guests, please recognize quiet hallway hours from 10:00 pm til 8:00 am

Inclement Weather

For the safety of all Guests, outdoor events may be changed due to unforeseen weather conditions.

Environmental Message

With Disney's commitment to the Environment, please refrain from throwing anything over the Ship's side. Thank you!

No Reserved Seats Policy

As a courtesy to all our Guests, we kindly advise that the saving of seats is not permitted in the Walt Disney Theatre, and the saving of the sun loungers is not permitted on Deck 11, 12, and 13. Items left unattended will be returned to lost and found at Guest Services, Deck 3 Midship.

Smoking

For the comfort of our Guests, the following areas are designated as smoking areas:
• Deck 13, forward, port side by Currents
• Deck 12, aft, port side outdoor area that is accessible through the Meridian Lounge
• Deck 4, aft, port side from 6:00 pm to 6:00 am only (all of Deck 4 is non-smoking from 6:00 am to 6:00 pm)
Smoking is prohibited inside all Guest staterooms and on stateroom verandahs. Guests found smoking in their staterooms or on their verandahs will be charged a \$250 stateroom recovery fee. Electronic cigarettes may only be used in designated smoking areas.

Walt Disney Theatre

Theatrical performances may use artificial fog, strobe lights, pyrotechnics and other special effects. For the safety of our performers and the comfort of those around you, the use of any photography, video recording device or any electronic equipment is prohibited.

Verandah Safety

Please do not leave any combustible materials on your balcony when not present in your stateroom for safety reasons.

Morning	8:30	8:45	9:00	9:15	9:30	9:45	10:00	10:15	10:30	10:45	11:00	11:15	11:30	11:45	12:00	12:15	12:30	12:45	1:00	1:15	1:30			
FUNNEL VISION	Alice in Wonderland (G) Funnel Vision					Mulan (G) Funnel Vision					Hercules (G) Funnel Vision													
BUENA VISTA THEATRE														Bridge of Spies (PG-13) Duration: 2 Hours 15 Minutes										
CHARACTERS	Don't forget your camera to capture those magical moments! Please refer to Character Board in the Lobby Atrium For detailed Character appearances.																							
FUN FOR ALL AGES											Youth Activities Open House ☺ Edge					Youth Activities Open House ☺ Disney's Oceaneer Lab								
											Youth Activities Open House ☺ Disney's Oceaneer Club													
	Port Adventures - Please check tickets For meeting times and locations.																							
ADULTS	Friends of Bill W. Outlook		Footprint Analysis Senses Fitness Center		Board Games available in O'Gills Pub.																Adult Trivia O'Gills Pub			
	Fab Abs Senses Fitness Center		Books and magazines available in Cove Cafe.																					
VIBE 14-17 YEARS OLD															Matinee Movie									
EDGE 11-14 YEARS OLD						Youth Activities Open House ☺					Animation Cells				Your Pick: Games Galore				Scattergories					
OCEANEER LAB 3-12 YEARS OLD	Game Challenge							Pictionary							Lunch		Youth Activities Open House ☺							
						Scavenger Hunt											Anyone Can Cook ☺							
OCEANEER CLUB 3-12 YEARS OLD						Youth Activities Open House ☺															Animation Antics			
						Magic PlayFloor ☺																		
Afternoon	1:45	2:00	2:15	2:30	2:45	3:00	3:15	3:30	3:45	4:00	4:15	4:30	4:45	5:00	5:15	5:30	5:45	6:00	6:15	6:30	6:45			
FUNNEL VISION	Snow White and the Seven Dwarfs (G) Funnel Vision						Star Wars Rebels: Disney Channel XD (G) Funnel Vision						Disney Channel on Deck Funnel Vision				The Aristocats (G) Funnel Vision							
BUENA VISTA THEATRE				Star Wars: The Force Awakens (PG-13) DOLBY 3D Duration: 2 Hours 16 Minutes													The Good Dinosaur (PG) DOLBY 3D Duration: 1 Hour 40 Minutes							
CHARACTERS							Chip & Dale Dk 4, Balcony						Tiana Lobby Atrium (H)		Stitch Lobby Atrium (P)		Belle Lobby Atrium (H)		Pluto Preludes		Ariel Lobby Atrium (H)			
FUN FOR ALL AGES	Youth Activities Open House ☺ Disney's Oceaneer Lab						Disney Trivia La Piazza			Crafts: 3D Crafts La Piazza			 Deck Stage				Love Songs with Aaron Lotzow La Piazza			 Walt Disney Theatre Disney Animation: Persistence of Vision D Lounge				
	 Lobby Atrium (12+)										Mickey Dk 4, Balcony		Donald Lobby Atrium (P)		Minnie Lobby Atrium (P)		Goofy Dk 4, Balcony		Daisy Dk 4, Balcony					
																	Live Music with FireLites Lobby Atrium							
ADULTS							ESPN Dream Team Draft Day - Basketball O'Gills Pub				1820 Society: Giant Jenga O'Gills Pub								Footprint Analysis Senses Fitness Center					
							Burn Fat Faster Senses Spa & Salon				Chinese Herbs Senses Spa & Salon				Pure Form Pilates Senses Fitness Center									
VIBE 14-17 YEARS OLD	Craft Corner			Ninja		Scavenger Hunt			Ice Cream Social			Disney Animation: Creating a Character			Brain Teasers			Youth Activities Open House ☺						
EDGE 11-14 YEARS OLD	Four Square			Villains			Ice Cream Social			Scavenger Hunt						Brain Teasers			Tween Choice					
OCEANEER LAB 3-12 YEARS OLD	Youth Activities Open House ☺			Float Fun Trivia						Detective School												Parachute Games		
OCEANEER CLUB 3-12 YEARS OLD				Craft Corner						Color Yourself Heroic						Memory Wall						Big Top Fun Fest!		
							Aloha Luau						Magic PlayFloor											
Evening	7:00	7:15	7:30	7:45	8:00	8:15	8:30	8:45	9:00	9:15	9:30	9:45	10:00	10:15	10:30	10:45	11:00	11:15	11:30	11:45	12:00			
FUNNEL VISION							Finding Nemo (G) Funnel Vision						Up (PG) Funnel Vision											
BUENA VISTA THEATRE							The Good Dinosaur (PG) DOLBY 3D Duration: 1 Hour 40 Minutes												Star Wars: The Force Awakens (PG-13) Duration: 2 Hours 16 Minutes					
CHARACTERS	Mickey Dk 4, Balcony		Belle Lobby Atrium (H)		Tinker Bell Lobby Atrium (V)		Ariel Lobby Atrium (H)				Cinderella Lobby Atrium		Tiana Lobby Atrium (H)		Tinker Bell Lobby Atrium (V)		Belle Lobby Atrium (H)		Cinderella Lobby Atrium					
FUN FOR ALL AGES	Goofy Preludes		Pluto Lobby Atrium		Minnie Dk 4, Balcony		Goofy Preludes				Daisy Dk 4, Balcony		Pluto Preludes		Mickey Dk 4, Balcony		Goofy Preludes		Minnie Dk 4, Balcony					
	 D Lounge		 D Lounge				 Walt Disney Theatre				 D Lounge		 D Lounge		 D Lounge		 D Lounge							
ADULTS	Family Dance Party The Tube		The Quest The Tube				Disney Animation: Persistence of Vision D Lounge				Live Music with FireLites Lobby Atrium													
			Live Piano with Aaron Lotzow La Piazza								DJ Request The Tube		 The Tube		 The Tube		 The Tube		80's/90's Remix with Club DJ Aksher The Tube		Classic Jazz La Piazza			
VIBE 14-17 YEARS OLD	Open House		Smoothie Hour				AquaDuck Fun		Pump It Up						Gotcha Registration		Magic Show							
EDGE 11-14 YEARS OLD	Create a Postcard		Youth Activities Open House ☺					Cards Tournament						Gender Wars						Bingo				
OCEANEER LAB 3-12 YEARS OLD			Super Sloppy Science											Anyone Can Cook										
								GAGA Ball																
OCEANEER CLUB 3-12 YEARS OLD			Scavenger Hunt				Magic PlayFloor				Glow Jam					Parachute Games		Youth Activities Open House ☺						
													Magic Show					Magic PlayFloor						

Symbol for activities that will be repeated during the cruise

FOLD

Fold along the dotted lines and take me with you so you don't miss any of the fun!

FOLD

YOUTH ACTIVITIES OPEN HOUSE
A non-secured program with activities for families, adults and children of all ages to enjoy together.

BUENA VISTA THEATRE

Deck 4 & 5, Midship



11:30 am
Duration:
2 hrs 15 mins
Rating: PG-13



2:30 pm
Duration:
2 hrs 16 mins
Rating: PG-13



5:30 & 8:30 pm
Duration:
1 hr 40 mins
Rating: PG



10:45 pm
Duration:
2 hrs 16 mins
Rating: PG-13

Character Appearances

CHIP & DALE

Deck 4, Balcony - 3:15 pm

GOOFY

Deck 4, Balcony - 3:45 pm
Lobby Atrium (P) - 5:15 pm
Preludes
7:15 pm, 8:00 pm & 10:00 pm

MICKEY MOUSE

Deck 4, Balcony
4:30 pm, 7:15 pm & 9:45 pm

PRINCESS TIANA

Lobby Atrium (H)
4:30 pm & 9:30 pm

STITCH

Lobby Atrium (P) - 4:45 pm

DONALD DUCK

Preludes - 4:45 pm

MINNIE MOUSE

Deck 4, Balcony
5:00 pm, 7:45 pm & 10:15 pm

BELLE

Lobby Atrium (H)
5:00 pm, 7:30 pm & 10:00 pm

CINDERELLA

Lobby Atrium
5:15 pm, 9:15 pm & 10:15 pm

PLUTO

Preludes
5:15 pm & 9:30 pm
Lobby Atrium - 7:30 pm

DAISY DUCK

Deck 4, Balcony
5:30 pm & 9:15 pm

ARIEL

Lobby Atrium (H)
5:30 pm & 8:00 pm

TINKER BELL

Lobby Atrium (V)
7:45 pm & 9:45 pm

(H) Hallway - (S) Starboard Side - (P) Port Side - (V) Vestibule

For details of daily Disney character appearances, refer to the character line on your Navigator Grid, or the digital character board in the Lobby Atrium.

SHIP DIRECTORY

YOUTH ACTIVITIES

DISNEY'S OCEANEER CLUB	DECK 5, MID	10:00 AM - 12:00 AM
DISNEY'S OCEANEER LAB	DECK 5, MID	7:30 AM - 12:00 AM
EDGE	DECK 13, MID	10:00 AM - 1:00 AM
VIBE	DECK 4, FWD	12:00 PM - 2:00 AM
IT'S A SMALL WORLD NURSERY	DECK 5, MID	7:30 AM - 11:00 PM

POOLS & MORE

* Children under 12 must have adult supervision in pool areas.

AQUADUCK	DECK 12, MID	11:00 AM - 11:00 PM
AQUALAB	DECK 12, AFT	1:00 PM - 6:00 PM
DONALD'S POOL	DECK 11, MID	9:00 AM - 10:00 PM
MICKEY'S POOL	DECK 11, MID	8:30 AM - 10:00 PM
MICKEY'S SLIDE	DECK 11, MID	9:00 AM - 6:00 PM
NEMO'S REEF	DECK 11, MID	9:00 AM - 6:00 PM
QUIET COVE POOL (18+)	DECK 11, FWD	8:00 AM - 11:00 PM
SATELLITE FALLS (18+)	DECK 13, FWD	6:00 AM - 8:00 PM

Complimentary pool vests are available for children to use in the pools onboard.
They are located on the pool deck.

RECREATION

GOLF/SPORTS SIMULATORS	DECK 13, AFT	9:00 AM - 6:00 PM
GOOFY GOLF	DECK 13, AFT	8:00 AM - 10:00 PM
GOOFY'S SPORTS DECK	DECK 13, AFT	8:00 AM - 6:00 PM
MIDSHIP DETECTIVE AGENCY	DECKS 2 & 5, MID	9:00 AM - 10:00 PM
PORT ADVENTURES DESK	DECK 5, MID	7:30 AM - 10:00 AM
SENSES FITNESS CENTER (18+)	DECK 11, FWD	6:30 AM - 10:00 PM

GENERAL INFORMATION

ARR-CADE	DECK 11, AFT	24 HOURS
CONNECT@SEA	DECK 4, MID	8:00 AM - 11:00 AM 4:00 PM - 6:00 PM 7:00 PM - 10:00 PM
DISNEY VACATION CLUB	DECK 4, MID	5:00 PM - 10:00 PM
DISNEY VACATION PLANNING	DECK 4, MID	8:00 AM - 10:00 AM 4:00 PM - 10:00 PM
GUEST SERVICES	DECK 3, MID	24 HOURS
HAIR BRAIDING	DECK 11, MID	2:00 PM - 9:30 PM
MEDICAL HEALTH CENTER	DECK 1, FWD	9:30 AM - 11:00 AM 4:30 PM - 7:00 PM
PORT SHOPPING DESK	DECK 4, MID	7:30 PM - 8:30 PM
PRELUDES	DECK 3, FWD	5:45 PM - 11:15 PM
SENSES SPA AND SALON	DECK 11, FWD	8:00 AM - 10:00 PM
SHUTTERS PHOTO GALLERY	DECK 4, MID	5:00 PM - 10:30 PM
SHUTTERS DIGITAL	DECK 4, MID	24 HOURS

SHOPPING

BIBBIDI BOBBIDI BOUTIQUE	DECK 5, MID	9:00 AM - 9:00 PM
MICKEY'S MAINSAIL	DECK 3, FWD	5:15 PM - 11:00 PM
QUACKS	DECK 11, MID	
SEA TREASURES	DECK 3, FWD	5:15 PM - 11:00 PM
VISTA GALLERY	DECK 4, MID	5:30 PM - 10:30 PM
WHITE CAPS	DECK 3, FWD	5:15 PM - 11:00 PM
WHOZITS & WHATZITS	DECK 11, MID	7:00 PM - 10:00 PM

DINNER MENU
Animator's Palate: Prince & Princess
Enchanted Garden: Prince & Princess
Royal Court: Prince & Princess
Dining Times: 5:45pm & 8:15pm
Evening Attire: Cruise Casual

WEATHER FORECAST
Today: Partly Cloudy
High: 78°F/26°C
Tomorrow: Sunny
High: 86°F/30°C

DINING & LOUNGES

BREAKFAST

CABANAS CONTINENTAL	DECK 11, AFT	6:15 AM - 6:45 AM
CABANAS	DECK 11, AFT	6:45 AM - 10:30 AM
ROYAL COURT	DECK 3, MID	8:00 AM - 9:30 AM

LUNCH

CABANAS	DECK 11, AFT	12:00 PM - 2:15 PM
FILMORE'S FAVORITES	DECK 11, MID	10:45 AM - 6:30 PM
LUIGI'S PIZZA	DECK 11, MID	10:45 AM - 6:30 PM
ROYAL COURT	DECK 3, MID	12:00 PM - 1:30 PM
TOW MATER'S GRILL	DECK 11, MID	10:45 AM - 11:00 PM

DINNER

ANIMATOR'S PALATE	DECK 3, AFT	5:45 PM & 8:15 PM
ENCHANTED GARDEN	DECK 2, MID	5:45 PM & 8:15 PM
ROYAL COURT	DECK 3, MID	5:45 PM & 8:15 PM
CABANAS TABLE SERVICE	DECK 11, AFT	6:30 PM - 8:30 PM
PALO (18+) (Reservations Req. & Now Fee Applies)	DECK 12, AFT	6:00 PM - 8:30 PM
REMY (18+) (Reservations Req. & Now Fee Applies)	DECK 12, AFT	6:00 PM - 8:30 PM

LATE NIGHT SNACKS

LA PIAZZA (18+)	DECK 4, AFT	10:45 PM - 11:45 PM
LUIGI'S PIZZA	DECK 11, MID	9:30 PM - 12:00 AM

ADDED FEATURES

BEVERAGE STATION	DECK 11, MID	24 HOURS
EYE SCREAM	DECK 11, MID	11:00 AM - 12:00 AM
ROOM SERVICE	DIAL 0	24 HOURS

ENTERTAINMENT - LOUNGES - BARS

Adults must be 21 and older to consume alcoholic beverages.

BON VOYAGE	DECK 3, MID	3:00 PM - 11:00 PM
COVE BAR (18+)	DECK 11, FWD	11:00 AM - 10:00 PM
COVE CAFE (18+)	DECK 11, FWD	6:30 AM - 12:00 AM
CURRENTS (18+)	DECK 13, FWD	11:00 AM - 11:00 PM
D LOUNGE	DECK 4, MID	SHOWTIMES
FROZONE TREATS	DECK 11, MID	12:00 PM - 9:00 PM
LA PIAZZA (18+ AFTER 9:00 P.M.)	DECK 4, AFT	5:00 PM - 12:00 AM
MERIDIAN (18+)	DECK 12, AFT	3:00 PM - 12:00 AM
O'GILLS PUB (18+ AFTER 9:00 PM)	DECK 4, AFT	4:00 PM - 12:00 AM
OH LA LA (18+)	DECK 4, AFT	5:00 PM - 12:00 AM
OUTLOOK	DECK 14, MID	5:00 PM - 12:30 AM
SKYLINE (18+)	DECK 4, AFT	9:30 PM - 2:00 AM
THE TUBE (18+ AFTER 9:00 P.M.)	DECK 4, AFT	9:30 PM - 2:00 AM
VISTA CAFE	DECK 4, MID	7:00 AM - 11:00 PM
WAVES	DECK 12, AFT	2:00 PM - 12:00 AM

Public Health Advisory: Consuming raw or under-cooked meats, poultry, seafood, shellfish, or eggs may increase your risk for food borne illness, especially if you have certain medical condition.

All Ashore: Approx. 7:45 am
All Aboard: 4:00 pm

SHIP'S AGENT IN ST. THOMAS

Virgin Port Services, 903 Upper Havensight #303,
St. Thomas, USVI 00802
Tel: 340-775-1151 or 340-514-3257
Fire/Security: 7-3001
Medical EMERGENCY: 7-3000
Health Center: 7-1923

IMPORTANT NUMBERS