

# PERSONAL NAVIGATOR

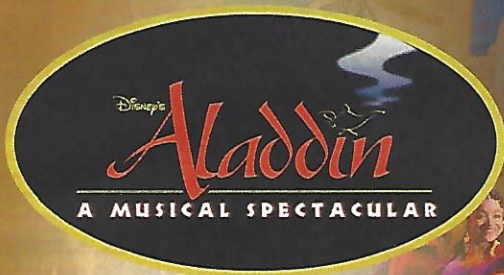


SUNDAY, JANUARY 24, 2016

Sunrise 7:04 am Sunset: 6:14 pm  
Evening Attire: Formal

Today: Partly Cloudy High: 68°F/20°C  
Tomorrow: Partly Cloudy High: 76°F/24°C

DAY AT SEA



A fast-paced, musical comedy based on the beloved animated film.

Aladdin, the "street rat" of Agrabah, meets a wise-cracking Genie, battles the evil Jafar, and falls in love with the beautiful and spirited Princess Jasmine. Disney storytelling at its best.

## WALT DISNEY THEATRE

Deck 3 & 4 Forward  
6:15 pm & 8:30 pm



As a courtesy to all Guests, we kindly advise that the saving of seats is **not** permitted in the Walt Disney Theatre.

Assistance available at the entrance to the Walt Disney Theatre 30 minutes prior to show time.

## Disney FANTASY Fun Facts

Tonnage: 130,000 Gross Tons  
Height: 216 Feet  
Length: 1115 Feet

### Important Dates

Name Announcement: March 10, 2009  
Steel Cutting: March 16, 2010  
Keel Laying: February 11, 2011  
Delivery: February 9, 2012

Almost four football fields in length, the Disney Fantasy is longer than the height of the Eiffel Tower in Paris (1,063 feet). She is also longer than the height of New York City's famous Chrysler building (1,047 feet).

### Disney Fantasy's Whistle

*Will be played after today's noon announcement*  
The Disney Fantasy's whistle, a prominent element of the "Sailing Away" deck party at the start of the cruise, is quite the musical talent. It's able to perform not just the first musical line of "When You Wish Upon a Star" but also the second line of the song ("makes no difference who you are") plus several measures of "Yo Ho (A Pirate's Life for Me)," "It's a Small World," "Be Our Guest," "Hi Diddle Dee Dee (An Actor's Life for Me)" and "A Dream is a Wish."



### CAPTAIN'S RECEPTION

Enjoy live music and a cocktail while meeting some of the ship's officers.

Lobby Atrium, Deck 3, Midship,  
5:00 & 7:30 pm

Enjoy an exclusive photo opportunity with Captain Thord at  
5:15 & 7:30 pm, Lobby Atrium

## Don't Miss:

### Good Morning Disney Fantasy

Channel 5 - Repeated from 5:00 am - 12:00 pm

Tune in to channel 5 as your Cruise Director and Assistant Cruise Director highlight the upcoming events and activities for the day.

### Disney Animation: Creating a Character

D Lounge, Deck 4, Midship - 9:45 am, 6:15 pm & 8:30 pm

Go behind the scenes at Walt Disney Animation Studios as Walt Disney himself talks about his most famous characters, then learn the basic techniques of drawing your favorite pals in this fun and interesting enrichment program.

### Club D Dance Party

D Lounge, Deck 4, Midship - 7:30 pm & 9:45 pm

Join your Cruise Staff as we turn D Lounge into an electrifying family nightclub. Club D, where everyone is a VIP!

### Variety Show: Freddy Fusion (18+)

The Tube, Deck 4, Aft - 10:45 pm

Featuring the Science & Magic of Freddy Fusion, as he entertains you in this adult exclusive show.



### Welcome Aboard Photo Raffle

Stop at Shutters today before 11:00 am and drop off your raffle ticket, for a chance to win a 10 Digital Photo Package worth \$149.95.

\*Terms & Condition apply.

## DINNER MENU

Animator's Palate : Pacific Rim Cuisine  
Enchanted Garden : Continental Market Cuisine  
Royal Court : French Cuisine

## DRINK OF THE DAY

Paradise Punch (Alcoholic)  
Coco Bali (Non Alcoholic)

### IMPORTANT NUMBERS

Fire/Security: 7-3001  
Medical Emergency: 7-3000  
Health Center: 7-1923



# ADULT ACTIVITY HIGHLIGHTS



## SENSES SPA FITNESS CLASSES & SEMINARS

*Pure Form Pilates* - Donald's Pool - 7:00 am  
*Fab Abs* - Senses Spa & Salon - 7:45 am  
*Body Sculpt Boot Camp* (Nom. Fee) - Senses Fitness Center - 8:30 am  
*Introduction to Acupuncture* - Senses Spa & Salon - 9:15 am  
*Detox for Health & Weight Loss* - Senses Spa & Salon - 10:30 am  
*Acupuncture Pain Relief* - Senses Fitness Center - 1:15 pm  
*Good Feet Seminar: Walking In Comfort* - Senses Spa & Salon - 2:00 pm  
*Secrets to a Flatter Stomach* - Senses Spa & Salon - 2:30 pm  
*Tour De Cycle* (Sign-Up Required) - Senses Fitness Center - 4:00 pm  
*Complimentary Footprint Analysis* - Senses Spa & Salon - 5:00 pm

## TASTING CLASSES

*Chocolate & Liquor Tasting* (21+) - Ooh La La - 12:15 pm  
*Martini Tasting* (21+) - Meridian - 1:00 pm  
*Stem to Stern Wine Tasting* (21+) - Ooh La La - 1:45 pm  
*Mixology* (21+) - Meridian - 3:00 pm  
*Tequila & Margarita Tasting* (21+) - Ooh La La - 4:30 pm  
*Whiskey Tasting* (21+) - Cove Cafe - 10:00 pm  
*Cognac Tasting* (21+) - Meridian - 10:30 pm  
 Please make reservations for tastings at Guest Services for a nominal fee.  
 Tasting Seminars are only for Guests 21 and older.

## 1820 SOCIETY: LUNCH

*Royal Court, Deck 3, Midship - 12:15 pm*  
 Get to know your fellow Society members over lunch.



## 1820 SOCIETY: MINI GOLF

*Goofy Golf, Deck 13, Aft - 3:15 pm*  
 Can you get a hole in one? Give it a try with some mini golf.

## 1820 SOCIETY: GAME CHALLENGE

*The Tube, Deck 4, Aft - 9:45 pm*  
 Society members unite as a team for this interactive game.

## ESPN DREAM TEAM DRAFT DAY - FOOTBALL

*O'Gills Pub, Deck 4, Aft - 11:15 am*  
 Join the "Commissioner" and engage in this interactive fantasy football draft unlike anything you've ever seen! Can YOU draft the greatest football team of all-time?

## ANYONE CAN COOK: LOBSTER RAVIOLI

*D Lounge, Deck 4, Midship - 2:15 pm*  
 From our galley to yours. Join our chefs as they show you how to prepare delicious dishes. Today's Menu - Lobster Ravioli

## 80'S/90'S REMIX WITH CLUB DJ ELLIOT

*The Tube, Deck 4, Aft - 11:30 pm*  
 Join Club DJ Elliot, as he spins the tunes and remix the 80's & 90's!



# FUN FOR ALL AGES HIGHLIGHTS

## WAKE UP WITH DISNEY JUNIOR

*D Lounge, Deck 4, Midship - 8:30 am*  
 What happens when you experience unlimited fun with your favorite Disney Junior shows? You get an exciting dance party designed especially for preschoolers ages seven and under.



## DISNEY ANIMATION: CREATING A CHARACTER

*D Lounge, Deck 4, Midship - 9:45 am, 6:15 pm & 8:30 pm*  
 Go behind the scenes at Walt Disney Animation Studios as Walt Disney himself talks about his most famous characters, then learn the basic techniques of drawing your favorite pals in this fun and interesting enrichment program.



## DIAMOND JACKPOT BINGO

*Bingo Pre-Sales start at 11:00 am*  
*D Lounge, Deck 4, Midship - 11:15 am*  
 Join us for 4 cash prize games and your chance to win a diamond pendant! Everyone attending will also receive a FREE Island Charm courtesy of Diamonds International! Pre-Sales start 15 minutes prior to the game.



## MICKEY 200

*The Tube, Deck 4, Aft - 12:15 pm*  
 Don't eat your vegetables... race them in this wild and wacky charge to the finish line. May the best veggie win! (Limited Availability)

## DISNEY VACATION CLUB GROUP PREVIEW

*D Lounge, Deck 4, Midship - 12:30 pm*  
 Want to learn more about taking magical vacations year after year? Please see a Disney Vacation Club representative on Deck 4, Midship, or call 7-2805 from your stateroom phone for more information about our interactive group presentation.



## PORT & SHOPPING TALK

*Buena Vista Theatre, Deck 4 & 5, Midship - 1:45 pm*  
 Join your Port and Shopping Guides to learn about the incredible tax & duty free shopping ashore this cruise! Free charm bracelet for all in attendance and a raffle to win over \$1000 in prizes and giveaways!

## VILLAINS QUOTE TRIVIA

*La Piazza, Deck 4, Aft - 1:45 pm*  
 "Off with their heads" - know the Villain who said this? Then join us for our fun Disney Villain's quote trivia!



## ESPN DREAM TEAM DRAFT DAY - FOOTBALL

*O'Gills Pub, Deck 4, Aft - 2:30 pm*  
 Join the "Commissioner" and engage in this interactive fantasy football draft unlike anything you've ever seen! Can YOU draft the greatest football team of all-time?

## \$5,000 MEGA JACKPOT BINGO

*Bingo Pre-Sales start at 4:00 pm*  
*D Lounge, Deck 4, Midship - 4:15 pm*  
 Don't miss your chance to take home big money! 4 CASH prize games and great raffle prizes to be won! Complete the fourth game in 46 numbers or less and win the \$5,000 Mega Jackpot! Pre-Sales start 15 minutes prior to game.



## CLUB D, DANCE PARTY

*D Lounge, Deck 4, Midship - 7:30 pm & 9:45 pm*  
 Join your Cruise Staff as we turn D Lounge into an electrifying family nightclub. Club D, where everyone is a VIP!





# YOUTH ACTIVITIES HIGHLIGHTS

## DINE & PLAY

A convenience for families dining at 8:15 pm, our Youth Activities counselors will be available at 9:15 pm at the entrance of Royal Court, Enchanted Garden and Animator's Palate dining rooms to bring registered children to join the fun in the Youth Activity areas.



Deck 5, Midship (7-5864) 9:00 am - 11:30 pm

### OPEN HOUSE

8:00 am - 9:00 am

Your chance to see our toddler space, it's a small world nursery.



Deck 5, Midship (7-1440)

(3-12 years old)

9:00 am - 12:00 am

### TINKER BELL'S TALENT SHOW

2:30 pm

Tinker Bell has come from Pixie Hollow to Disney Cruise Line to help young cruisers discover their fairy talents.

### PLUTO'S PAJAMA PARTY

9:45 pm

Bring the little ones in their pajamas but there will be anything but sleep when Pluto and friends host the ultimate slumber party!



Deck 5, Midship (7-1445)

(3-12 years old)

9:00 am - 12:00 am

### SUPER SLOPPY SCIENCE

10:30 am

Join Professor Make-O-Mess in some of the most extreme experiments you will ever see in the world of Super Sloppy Science!

### DETECTIVE SCHOOL

9:30 pm

It's a crime how much fun you'll have as you go CSI Goofy style.



Deck 13, Midship (7-9743)

(11-14 years old)

9:00 am - 1:00 am

### DISNEY ANIMATION: CREATING A CHARACTER

7:15 pm

Go behind the scenes at Walt Disney Animation Studios as Walt Disney himself talks about his most famous characters, then learn the basic techniques of drawing Mickey and Donald in this fun and interesting enrichment program.

### MIRROR, MIRROR

11:45 pm

Join the Magic Mirror and Dopey in the fairest game show of them all, Mirror, Mirror. There's trivia, singing and even a relay race. Hi Ho, Hi Ho, it's off to play we go!



Entrance on Deck 4, Forward (7-9418)

(14-17 years old)

9:00 am - 2:00 am

### ESPN DREAM TEAM DRAFT DAY - FOOTBALL

3:30 pm

Join the "Commissioner" and engage in this interactive fantasy football draft unlike anything you've ever seen! Can YOU draft the greatest football team of all-time?

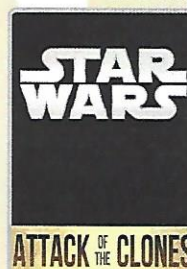
### GENDER WARS

10:45 pm

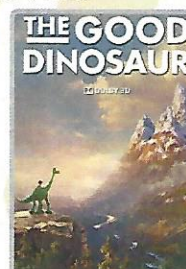
Join us as we find out who really are the kings or queens of the castle.

# BUENA VISTA THEATRE

Deck 4 & 5, Midship  
Today's Movies



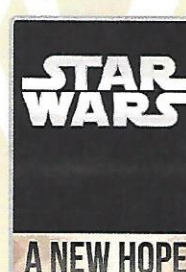
8:30 am  
Duration: 2 hrs 22 mins  
Rating: PG



**DOLBY 3D**  
11:15 am  
Duration: 1 hr 40 mins  
Rating: PG



3:00 pm  
Duration: 2 hrs 20 mins  
Rating: PG-13



5:45, 8:15 & 10:45 pm  
Duration: 2 hrs 1 min  
Rating: PG



### FAMILY VARIETY ACT

Featuring the Comedy  
of Heath Hyche  
as he entertains the  
entire family in this  
fun-filled show.

*The Tube, Deck 4, Aft,*  
7:30 pm



### ADULT VARIETY ACT

Featuring the  
Science and Magic  
of Freddy Fusion,  
as he entertains you in this  
adult exclusive show.

*The Tube (18+),*  
*Deck 4, Aft,*  
10:45 pm

### YOUTH ACTIVITIES OPEN HOUSE

Open House is an opportunity for all to come and participate in a variety of exciting activities and free time in the Oceaneer Club, Oceaneer Lab, it's a small world nursery, Vibe and Edge throughout the cruise. During these times secured programming will still be offered in the other venue for those looking to check their children into care.

Disney's Oceaneer Club: 9:00 am - 10:00 am

Disney's Oceaneer Lab: 7:00 pm - 8:30 pm

Edge: 9:00 am - 10:00 am & 5:30 pm - 7:00 pm

Vibe: 9:00 am - 10:30 am & 6:30 pm - 9:00 pm



# MORE TO ENJOY WHILE ONBOARD



## POPULAR HOME PORTS FOR LIMITED-TIME

In the fall of 2016, Disney Cruise Line will return to New York with sailings to the Bahamas, Miami with longer 7-night voyages for the very first time, and a return to Galveston, TX with a line-up of 7-night itineraries including a stop at Castaway Cay to round out the season. Visit Disney Vacation Planning, Deck 4, Midship, for more information.



## DISNEY VACATION CLUB® GROUP PREVIEW

Want to learn more about taking magical vacations year after year? Please see a Disney Vacation Club representative on Deck 4, Midship, or call 7-2805 from your stateroom phone for more information about our interactive group presentation.

## PORT AND SHOPPING INFORMATION

Join your Port Shopping Guides, Candice and Mark, to learn about the incredible tax & duty free shopping ashore this cruise, everything from Diamonds to T-Shirts, Rolex to Rum-cake! Port Shopping Show, Buena Vista Theatre, Deck 4, Forward 1:45 pm. FREE Charm Bracelet for everyone who attends! Raffle to win OVER \$1000 in Prizes & Giveaways! Then join Candice and Mark as they give insider tips on shopping for gemstones in the Caribbean at the Diamond & Gemstone Seminar, The Tube, Deck 4, Aft, 4:00 pm.



## Connect @ Sea

We are now offering a NEW and improved Internet service to stay connected on your cruise like no other in the industry! Internet packages range from \$0.25 per MB - \$89.00 (1000 MB package). For more information contact your Connect@Sea Expert or Guest Services onboard.

## ONBOARD AIRLINE CHECK IN

Stop by the Guest Services Desk, Deck 3, Midship to find out about enrolling in our Onboard Airline Check In Service.

## CASTAWAY CAY 5K REGISTRATION (10+)

Sign up today for the Castaway Cay 5K! Please visit the Port Adventures Desk or the Guest Services Desk to register at anytime prior to our arrival at Disney's Castaway Cay. Please note that runners must be 10 years of age or older to participate.

## MIDSHIP DETECTIVE AGENCY

The puppies from 101 Dalmatians have gone missing! Use your special detective "badge" to track down the puppies and catch the villain who took them. Decks 2 & 5, Midship.



The best way to explore our ports of call is through the eyes of a Port Adventure. Why not swim with stingrays in Grand Cayman or explore the ruins in Cozumel. Stop by the Port Adventures desk, Deck 5, Midship.

## SHOPPING

### BIBBIDI BOBBIDI BOUTIQUE

Young Princesses and Princes can get ready for a formal evening with a makeover at the Bibbidi Bobbidi Boutique. Make your reservations by visiting Bibbidi Bobbidi Boutique, Deck 5, Midship or dialing extension 7-9438. Limited space available.

### STAR WARS DAY AT SEA MERCHANDISE RELEASE

Head to Sea Treasures, Deck 3, Forward, today for the stellar array of commemorative Star Wars Day at Sea merchandise available for purchase! If you have yet to pick up your pre-ordered merchandise, these are available in the Vista Gallery, Deck 4, Midship.

### RED CARPET SOPHIA FIORI DIAMOND UNVEILING

Drop in at White Caps today to meet the diamond specialist with Sophia Fiori. Whether you are a Hollywood celebrity or a full time Mom, every woman experiences a Red Carpet Moment when putting on Sophia Fiori Jewelry so treat yourself, you deserve it! Deck 3, Forward.

### STAR WARS DAY AT SEA LIMITED EDITION PIN

Fans of Disney Pins can swing by Mickey's Mainsail, Deck 3, Forward, for a wide selection of Disney and Disney Cruise Line trading pins. Commemorate your Star Wars Day at Sea sailing with a limited edition pin, available for purchase at 2:00 pm in White Caps, Deck 3, Forward. Wristband required, limit two (2) pins per wristband. While supplies last. Wristbands must be redeemed today to secure your pins.

### STAR WARS DAY AT SEA ART UNVEILING

The Vista Gallery holds one of the greatest Disney art collections out at sea! Stop by the Vista Gallery today where the new and captivating Star Wars Day at Sea artwork is being unveiled. While supplies last. Limit two (2) per Guest per Limited Edition product. Deck 4, Midship.

### SPA SPECIAL

#### IONTHERMIE

Would you like to lose between 1 – 8 inches?  
Speed up your metabolism?  
Firm your muscle tone?  
Improve appearance of cellulite?  
If so, then Ionithermy is the best treatment for you!  
50 min. \$155

Choose your alliance and gear up with fun new Star Wars merchandise designed exclusively for Disney Cruise Line.

AVAILABLE ONBOARD!  
DECK 3, FORWARD

### FORMAL PORTRAITS TONIGHT!

Now that the family is dressed up and ready to enjoy the evening, capture the memories in your formal attire by visiting our professional portrait studios located in the Lobby Atrium, Deck 3, Midship.

5:00 pm - 6:00 pm  
7:15 pm - 8:30 pm  
9:30 pm - 10:30 pm

*\*Please note that photos are available for viewing on our interactive photo kiosks approximately five hours after being taken and are only available for purchase during this cruise.*

## IMPORTANT INFORMATION

### Security Notice

All Guests (including children) who wish to disembark the ship are required to present their key to the World card at the gangway. A photo ID is also required for those Guests who are 18 years of age or older. Guests under the age of 18 are required to have a parent, guardian or other responsible adult sign an authorization form at the Guest Service Desk if they wish to go ashore unaccompanied or with any adult from another stateroom.

### Insect Repellent Advisory

Protect against mosquito bites and related illnesses when going ashore. Insect repellent is available for purchase in White Caps. When using both sunscreen and insect repellent, use sunscreen first and apply insect repellent on top of sunscreen.

### Cold and Flu Reminder

Please wash hands frequently and thoroughly, particularly before meals. Contact the Health Center by dialing 7-1923, should anyone in your party become ill.

### Corridor Quiet Hours

As a courtesy to all our Guests, please recognize quiet hallway hours from 10:00 pm til 8:00 am

### Inclement Weather

For the safety of all Guests, outdoor events may be changed due to unforeseen weather conditions.

### Environmental Message

With Disney's commitment to the Environment, please refrain from throwing anything over the Ship's side. Thank you!

### No Reserved Seats Policy

As a courtesy to all our Guests, we kindly advise that the saving of seats is not permitted in the Walt Disney Theatre, and the saving of the sun loungers is not permitted on Deck 11, 12, and 13. Items left unattended will be returned to lost and found at Guest Services, Deck 3 Midship.

### Smoking

For the comfort of our Guests, the following areas are designated as smoking areas:

\*Deck 13, forward, port side by Currents  
\*Deck 12, aft, port side outdoor area that is accessible through the Meridian Lounge  
\*Deck 4, aft, port side from 6:00 pm to 6:00 am only (all of Deck 4 is non-smoking from 6:00 am to 6:00 pm)  
Smoking is prohibited inside all Guest staterooms and on stateroom verandahs. Guests found smoking in their staterooms or on their verandahs will be charged a \$250 stateroom recovery fee. Electronic cigarettes may only be used in designated smoking areas.

### Walt Disney Theatre

Theatrical performances may use artificial fog, strobe lights, pyrotechnics and other special effects. For the safety of our performers and the comfort of those around you, the use of any photography, video recording device or any electronic equipment is prohibited.

### Verandah Safety

Please do not leave any combustible materials on your balcony when not present in your stateroom for safety reasons.



CLUBHOUSE SERIES    STRIP UP SERIES    REPEAT & INVENT SERIES    FOLD ALONG THE DOTTED LINES AND TAKE ME WITH YOU SO YOU DON'T MISS ANY OF THE FUN!

CLUBHOUSE SERIES  
STORYBOOK SERIES



BUENA VISTA THEATRE

Deck 4 & 5, Midship



DOLBY.3D

8:30 am  
Duration:  
2 hrs 22 mins  
Rating: PG

11:15 am  
Duration:  
1 hr 40 mins  
Rating: PG

3:00 pm  
Duration:  
2 hrs 20 mins  
Rating: PG-13

5:45, 8:15 & 10:45 pm  
Duration:  
2 hrs 1 min  
Rating: PG

Character Appearances

**MINNIE MOUSE**  
Deck 4, Balcony  
8:30 am, 4:30 pm & 9:30 pm  
Preludes  
3:45 pm, 5:45 pm & 7:45 pm

**WOODY**  
Lobby Atrium (V)  
8:45 am & 9:45 am

**PLUTO**  
Deck 4, Balcony  
9:00 am, 10:00 am & 10:30 pm

**JESSIE**  
Lobby Atrium (V)  
9:15 am & 10:15 am

**GOOFY**  
Deck 4, Balcony - 9:30 am  
Preludes - 5:15 pm

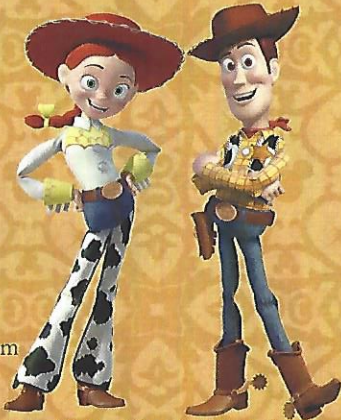
**STITCH**  
Deck 4, Balcony  
1:00 pm & 2:00 pm

**DAISY DUCK**  
Deck 4, Balcony - 1:30 pm  
Preludes  
4:45 pm, 8:15 pm & 10:00 pm

**CHIP & DALE**  
Deck 4, Balcony - 4:00 pm  
Preludes - 7:15 pm

**DONALD DUCK**  
Preludes  
4:15 pm & 9:30 pm

**MICKEY MOUSE**  
Deck 4, Balcony  
5:00 pm, 7:30 pm & 10:00 pm



(H) Hallway - (S) Starboard Side - (P) Port Side - (V) Vestibule  
For details of daily Disney character appearances, refer to the character line on your Navigator Grid, or the digital character board in the Lobby Atrium.

IMPORTANT NUMBERS

Fire/Security: 7-3001  
Medical Emergency: 7-3000  
Health Center: 7-1923

YOUTH ACTIVITIES THEMED EXPERIENCES

**CLUBHOUSE SERIES**  
focuses on movement and features content which appeals to younger children.

**JUMP UP SERIES**  
includes large group games & movement-oriented activities.

**WIN THE SPOTLIGHT SERIES**  
focuses on children's stage presence with lots of activities and enthusiasm.

**STORYBOOK SERIES**  
is designed with a strong connection to the Disney classic stories.

**CREATE & INVENT SERIES**  
will have a tactile focus allowing children to create and admire their work.

**SOLVE IT! SERIES**  
are less active, but will challenge children with problem/solutions-based activities.

YOUTH ACTIVITIES OPEN HOUSE

A non-secured program with activities for families, adults and children of all ages to enjoy together.

SHIP DIRECTORY

YOUTH ACTIVITIES

DISNEY'S OCEANEER CLUB	DECK 5, MID	9:00 AM - 12:00 AM
DISNEY'S OCEANEER LAB	DECK 5, MID	9:00 AM - 12:00 AM
EDGE	DECK 13, MID	9:00 AM - 1:00 AM
VIBE	DECK 4, FWD	9:00 AM - 2:00 AM
IT'S A SMALL WORLD NURSERY	DECK 5, MID	9:00 AM - 11:30 PM

POOLS & MORE

\* Children under 12 must have adult supervision in pool areas.

AQUADUCK	DECK 12, MID	9:00 AM - 11:00 PM
AQUALAB	DECK 12, AFT	10:00 AM - 6:00 PM
DONALD'S POOL	DECK 11, MID	9:00 AM - 10:00 PM
MICKEY'S POOL	DECK 11, MID	8:30 AM - 10:30 PM
MICKEY'S SLIDE	DECK 11, MID	9:00 AM - 6:00 PM
NEMO'S REEF	DECK 11, MID	9:00 AM - 6:00 PM
QUIET COVE POOL (18+)	DECK 11, FWD	8:00 AM - 11:00 PM
SATELLITE FALLS (18+)	DECK 13, FWD	6:00 AM - 8:00 PM

Complimentary pool vests are available for children to use in the pools onboard.  
They are located on the pool deck.

RECREATION

GOLF/SPORTS SIMULATORS	DECK 13, AFT	9:00 AM - 6:00 PM
GOOFY GOLF	DECK 13, AFT	8:00 AM - 10:00 PM
GOOFY'S SPORTS DECK	DECK 13, AFT	8:00 AM - 6:00 PM
MIDSHIP DETECTIVE AGENCY	DECKS 2 & 5, MID	9:00 AM - 10:00 PM
PORT ADVENTURES DESK	DECK 5, MID	9:00 AM - 5:00 PM
		7:00 PM - 8:30 PM
SENSES FITNESS CENTER (18+)	DECK 11, FWD	6:30 AM - 10:00 PM

GENERAL INFORMATION

ARR-CADE	DECK 11, AFT	24 HOURS
DISNEY VACATION CLUB	DECK 4, MID	9:00 AM - 11:00 AM 2:30 PM - 10:00 PM
DISNEY VACATION PLANNING	DECK 4, MID	10:00 AM - 8:30 PM
GUEST SERVICES	DECK 3, MID	24 HOURS
MEDICAL HEALTH CENTER	DECK 1, FWD	9:30 AM - 11:00 AM 4:30 PM - 7:00 PM
PORT & SHOPPING DESK	DECK 4, MID	7:30 PM - 8:30 PM
PRELUDES	DECK 3, FWD	1:30 PM - 2:30 PM 5:45 PM - 8:45 PM
SENSES SPA AND SALON	DECK 11, FWD	8:00 AM - 10:00 PM
SHUTTERS PHOTO GALLERY	DECK 4, MID	9:30 AM - 12:00 PM 7:30 PM - 11:00 PM
SHUTTERS DIGITAL	DECK 4, MID	24 HOURS

SHOPPING

BIBBIDI BOBBIDI BOUTIQUE	DECK 5, MID	9:00 AM - 9:00 PM
MICKEY'S MAINSAIL	DECK 3, FWD	9:30 AM - 11:00 PM
QUACKS	DECK 11, MID	
SEA TREASURES	DECK 3, FWD	9:30 AM - 11:00 PM
VISTA GALLERY	DECK 4, MID	9:45 AM - 10:30 PM
WHITE CAPS	DECK 3, FWD	9:30 AM - 11:00 PM
WHOZITS & WHATZITS	DECK 11, MID	10:00 AM - 4:00 PM 7:00 PM - 10:00 PM

DINNER MENU

Animator's Palate : Pacific Rim Cuisine  
Enchanted Garden : Continental Market Cuisine  
Royal Court : French Cuisine

DRINK OF THE DAY

Paradise Punch (Alcoholic)  
Coco Bali (Non Alcoholic)

WEATHER FORECAST

Today: Partly Cloudy  
High: 68°F/20°C  
Tomorrow: Partly Cloudy  
High: 76°F/24°C

Dining Times: 5:45pm & 8:15pm

Evening Attire: Formal

DINING & LOUNGES

BREAKFAST

CABANAS CONTINENTAL	DECK 11, AFT	7:00 AM - 7:30 AM
CABANAS	DECK 11, AFT	7:30 AM - 11:30 AM
ROYAL COURT	DECK 3, MID	8:00 AM - 9:30 AM

LUNCH

CABANAS	DECK 11, AFT	11:45 AM - 2:00 PM
FILLMORE'S FAVORITES	DECK 11, MID	11:00 AM - 6:30 PM
LUIGI'S PIZZA	DECK 11, MID	11:00 AM - 6:30 PM
PALO BRUNCH (18+) (RESERVATIONS REQ. & NOM. FEE APPLIES)	DECK 12, AFT	10:00 AM - 12:30 PM
ROYAL COURT	DECK 3, MID	12:00 PM - 1:30 PM
TOW MATER'S GRILL	DECK 11, MID	11:00 AM - 11:00 PM

DINNER

ANIMATOR'S PALATE	DECK 3, AFT	5:45 PM & 8:15 PM
ENCHANTED GARDEN	DECK 2, MID	5:45 PM & 8:15 PM
ROYAL COURT	DECK 3, MID	5:45 PM & 8:15 PM
CABANAS TABLE SERVICE	DECK 11, AFT	6:30 PM - 8:30 PM
PALO (18+) (RESERVATIONS REQ. & NOM. FEE APPLIES)	DECK 12, AFT	6:00 PM - 8:30 PM
REMY (18+) (RESERVATIONS REQ. & NOM. FEE APPLIES)	DECK 12, AFT	6:00 PM - 8:30 PM

LATE NIGHT SNACKS

LA PIAZZA (18+)	DECK 4, AFT	10:45 PM - 11:45 PM
LUIGI'S PIZZA	DECK 11, MID	9:30 PM - 12:00 AM

ADDED FEATURES

BEVERAGE STATION	DECK 11, MID	24 HOURS
EYE SCREAM	DECK 11, MID	11:00 AM - 11:00 PM
ROOM SERVICE	DIAL 0	24 HOURS

ENTERTAINMENT - LOUNGES - BARS

Adults must be 21 and older to consume alcoholic beverages.

BON VOYAGE	DECK 3, MID	9:00 AM - 11:00 PM
COVE BAR (18+)	DECK 11, FWD	10:00 AM - 11:00 PM
COVE CAFE (18+)	DECK 11, FWD	6:30 AM - 12:00 AM
CURRENTS (18+)	DECK 13, FWD	9:30 AM - 11:00 PM
D LOUNGE	DECK 4, MID	SHOWTIMES
FROZONE TREATS	DECK 11, MID	10:00 AM - 10:00 PM
LA PIAZZA (18+ AFTER 9:00 P.M.)	DECK 4, AFT	12:00 PM - 12:00 AM
MERIDIAN (18+)	DECK 12, AFT	10:00 AM - 12:00 AM
O'GILLS PUB (18+ AFTER 9:00 P.M.)	DECK 4, AFT	11:00 AM - 12:00 AM
OOH LA LA (18+)	DECK 4, AFT	5:30 PM - 12:00 AM
OUTLOOK	DECK 14, MID	
SKYLINE (18+)	DECK 4, AFT	5:30 PM - 12:30 AM
THE TUBE (18+ AFTER 9:00 P.M.)	DECK 4, AFT	7:00 PM - 8:30 PM 9:30 PM - 2:00 AM
VISTA CAFE	DECK 4, MID	7:00 AM - 11:00 PM
WAVES	DECK 12, AFT	10:00 AM - 6:00 PM

Public Health Advisory: Consuming raw or under-cooked meats, poultry, seafood, shellfish, or eggs may increase your risk for food borne illness, especially if you have certain medical condition.



GOOFY'S SPORTS

Digital Simulators

Sports Simulator

(Basketball, Baseball, Hockey, Football or Soccer)\$12 / half hr, \$20 / hr

Golf Simulator

\$25 / half hr, \$45 / hr

Reservations can be made at the Port Adventures Desk, Deck 5, Midship or at the Simulators, Deck 13, Aft.