

# PERSONAL NAVIGATOR

THURSDAY, DECEMBER 24, 2015

KEY WEST, FLORIDA

Sunrise 6:59 am Sunset: 5:28 pm

Evening Attire: Cruise Casual

All Ashore: 8:00 am

All Aboard: 5:45 pm

Today: Partly Sunny High: 78°F/26°C  
Tomorrow: Partly Cloudy High: 78°F/26°C

## TWICE CHARMED

AN ORIGINAL TWIST ON THE CINDERELLA STORY

STEP BACK IN TIME TO EXPERIENCE THE STORY OF CINDERELLA IN A MAGICAL NEW WAY. ENJOY THIS MAGNIFICENT MUSICAL PRODUCTION WITH YOUR FAVORITE CHARACTERS - AND A FEW NEW ONES!

WALT DISNEY THEATRE

Deck 4, Forward

6:15 pm & 8:30 pm

As a courtesy to all Guests, we kindly advise that the saving of seats is **not** permitted in the Walt Disney Theatre.



Assistance available at the entrance to the Walt Disney Theatre 30 minutes prior to show time.



CHRISTMAS EVE

## Welcome to Key West

The U.S. government acquired Key West from Spain in the early 1800s. During those days, most of the isolated islanders made their living as wreckers and pirates, diving for the booty from ships that wrecked on the coral reefs offshore.

In the early 1930s Key West was recognized as a resort town and hotels, restaurants, bars sprang up around the island. For about 6 months business was wonderful until a hurricane tore up the railroad and rendered the island helpless.

The State of Florida and the Federal Government took over and began the work of rehabilitation, particularly directed toward development of tourist facilities and attractions.

The number one business here is tourism and a laid back kind of fun. But only in Key West does the sun shine the brightest when it sets.

Everyone gathers for the never planned, always varied Sunset Celebration on the Mallory Dock. Once the sun is safely tucked away by jugglers, mimes, musicians and street artists, the city moves to a different beat.



An evening of spectacle and holiday enchantment, join the Cruise Director and our holiday Snowbells as we celebrate the arrival of a very special holiday guest - Santa Claus! Get your cameras ready. You don't want to miss Santa and the World Famous Disney Characters as they create a Winter Wonderland....at sea!

Lobby Atrium,  
Deck 3, Midship,  
4:15 pm

## Don't Miss:

**Who Wants to be a Mouseketeer?**

*D Lounge, Deck 4, Midship - 7:30 pm & 9:45 pm*

Your chance to get into the "hot seat" and win limited edition prizes. Or, play along as part of our live studio audience.

**Match Your Mate (18+)**

*Fathoms, Deck 3, Forward - 10:15 pm*

It's time to play everyone's favorite couples game show, Match Your Mate!

**Storytime with Mrs. Claus**

*Lobby Atrium, Deck 3, Midship - 10:15 pm*

Full of fun and whimsy, Mrs. Claus makes a very special visit to the ship's atrium to read classic holiday tales to all the children - and children at heart!

**Religious Services**

with Father Kevin Sandberg


**Daily Mass**

*Buena Vista Theatre, Deck 5, Aft - 8:30 am*

**Midnight Christmas Mass**

*Walt Disney Theatre, Deck 4, Forward - 12:00 am*

Disney Cruise Line

PORT ADVENTURES 

Please check your tickets for meeting times and locations. Visit the Port Adventure's Desk, Deck 3, Midship for any questions.

## DINNER MENU

Animator's Palate : Pacific Rim Cuisine  
Carioca's : South American Cuisine  
Lumiere's : French Cuisine

## DRINK OF THE DAY

Yellow Bird (Alcoholic)

Passion Cream Freeze (Non-Alcoholic)

## IMPORTANT NUMBERS

Fire/Security: 7-3001  
Medical Emergency: 7-3000  
Health Center: 7-1923

# ADULT ACTIVITY HIGHLIGHTS



## SENSES SPA FITNESS CLASSES & SEMINARS

*Yoga* - Senses Spa Fitness Center - 7:00 am  
*Body Sculpt Boot Camp* (Nom. Fee) - Senses Spa Fitness Center - 8:00 am  
*Group Cycling* (Sign-Up Required) - Senses Spa Fitness Center - 9:00 am  
*Pamper Party* - Senses Spa Fitness Center - 12:00 pm  
*Back Pain Solutions* - Keys - 2:00 pm  
*Pure Form Pilates* - Senses Spa & Salon - 4:00 pm  
*Complimentary Footprint Analysis* - Senses Spa & Salon - 5:00 pm

## TASTING CLASSES

*Stem to Stern Wine Tasting* (21+) - Keys - 4:00 pm  
 Please make reservations for tastings at Guest Services for a nominal fee.  
 Tasting Seminars are only for Guests 21 and older.



## 1820 SOCIETY: ICE SCREAM SOCIAL

*Eye Scream, Deck 9, Aft - 5:15 pm*  
 Join your fellow Society members for some ice cream and conversation.

## XBOX CHALLENGE

*O'Gills Pub, Deck 3, Forward - 3:30 pm*  
 Join your cruise staff for some Xbox fun!

## ART OF THE THEME SHOW TOUR

*Palo, Deck 10, Aft - 4:30 pm*  
 Join us for a guided tour highlighting the design, Imagineering and artistry of the Disney Magic. This tour is reserved for Guests 18 and over.

## TV TUNES TRIVIA

*O'Gills Pub, Deck 3, Forward - 7:30 pm*  
 Remember the songs to those classic TV shows? Come and find out just how well you do in this fun trivia.

## LIVE PIANO WITH CHUCK PERRY

*Keys, Deck 3, Forward - 7:30 pm, 9:45 pm & 11:00 pm*  
 Join Chuck Perry as he plays live for your listening pleasure.

# FUN FOR ALL AGES HIGHLIGHTS

## YOUTH ACTIVITIES OPEN HOUSE: BECOME IRON MAN!

*Disney's Oceaneer Club, Deck 5, Midship - 12:00 pm*  
 Do you want to be Iron Man? Marvel's Avengers Academy invites you to virtually suit up in Iron Man's armor for an exciting interactive training gauntlet.

## PICTIONARY CHALLENGE

*Promenade Lounge, Deck 3, Aft - 1:00 pm*  
 Join your Cruise Staff for this exciting game of fast draw.

## HOLIDAY CRAFTS

*Promenade Lounge, Deck 3, Aft - 2:00 pm*  
 Like elves in Santa's workshop, craft your own holiday-themed work of art.

## DISNEY TRIVIA

*Promenade Lounge, Deck 3, Aft - 3:45 pm*  
 Navigate your way through a round of questions to test how much you really know about Disney.

## SANTA'S WINTER WONDERLAND BALL

*Lobby Atrium, Deck 3, Midship - 4:15 pm*  
 An evening of spectacle and holiday enchantment, join your Cruise Director and our holiday Snowbells as we celebrate the arrival of a very special holiday guest - Santa Claus! Get your cameras ready. You don't want to miss Santa and the World Famous Disney Characters as they create a Winter Wonderland....at sea!



## SENSES SPA BINGO

*Bingo Pre-Sales start at 7:15 pm*  
*Fathoms, Deck 3, Forward - 7:30 pm*  
 Four CASH prizes to be won! Plus great spa prizes that will pamper you, including a mini facial and massages all courtesy of the Senses Spa and Salon. Serenity now! Pre-Sales start 15 minutes prior to game.



## SALUDOS AMIGOS FIESTA

*D Lounge, Deck 4, Midship - 10:30 pm*  
 Come see what Donald and his friends are up to this time. Bring the family out to this interactive dance party featuring fun Latin music! Your family will learn to salsa, merengue and just have a Latin good time!



## DISNEY TUNES TRIVIA

*Promenade Lounge, Deck 3, Aft - 10:30 pm*  
 Determine just how well you know your Disney Tunes with your Cruise Staff.



## FAMILY SUPERSTAR KARAOKE

*D Lounge, Deck 4, Midship - 11:00 pm*  
 Join your Cruise Staff in D Lounge tonight and sing along to your favorite song - fun for everyone.

# SAFETY ASHORE INFORMATION

While you will find many great experiences ashore, please remain vigilant about your personal safety and the safety of your belongings. As in any large urban tourist destination, you'll want to take some basic precautions to make the most of your time ashore.

- Be aware of your surroundings at all times. Avoid short cuts, narrow alleys and poorly lit streets.
- Avoid wandering from the main shopping and tourist areas into unfamiliar territory. If venturing out independently, have a plan, use only licensed taxi operators.
- Identity/Credit Card theft can occur anywhere. Please remain vigilant in monitoring the safe keeping of your personal information.
- Leave valuables in your room safe and avoid carrying large amounts of cash. Exercise caution when using ATMs. Cameras and handbags should be carried close to your body or concealed out of sight.
- Leave air transportation tickets and other travel documents in your room safe. When going ashore, each adult is required to carry a Driver's license, passport or other government-issued photo ID. - Note: Some ports may require guests to carry passports ashore.
- Most crimes are easier to commit in dark unlit areas. When going ashore at night, please be extra vigilant about your personal safety.

# YOUTH ACTIVITIES HIGHLIGHTS

## DINE & PLAY

As a convenience for families dining at 8:15 pm, our Youth Activities Counselors will be available at 9:15 pm at the entrance of Lumiere's and Carioca's and at 9:30 pm at the entrance of Animator's Palate to bring registered children to join the fun in Disney's Oceaneer Club and Disney's Oceaneer Lab.



Deck 5, Aft (7-5864)

7:30 am - 11:00 pm

Infants and Toddlers can enjoy toys and activities at It's a small world nursery. Reservations are first come, first served so please stop by!



Deck 5, Midship (7-1439)  
(3-12 years old)

7:30 am - 12:00 am

### THE ROYAL BALL

4:30 pm

Bring the little ones in their pajamas but there will be anything but sleep when Pluto and friends host the ultimate slumber party!

### PLUTO'S PAJAMA PARTY

10:00 pm

Bring the little ones in their pajamas but there will be anything but sleep when Pluto and friends host the ultimate slumber party!



Deck 5, Midship (7-1445)  
(3-12 years old)

9:00 am - 12:00 am

### GOOFY FILES

4:00 pm

This fascinating activity takes you into the invisible world of forensics where you will discover different ways to identify the suspect of a crime.

### PISTON CUP CHALLENGE

7:30 pm

It's Dinoco time and you're part of the pit crew! Design your own race car and see if you've got what it takes to end up in the winner's circle!



Deck 9, Midship (7-5816)  
(11-14 years old)

9:00 am - 1:00 am

### ANIMATION ANTICS

3:45 pm

Learn simple animation techniques and then put your new skills to use by drawing some of your favorite Disney Characters.

### MAGIC SHOW

7:45 pm

The Magnificent Magician will demonstrate to you some of the best known magic tricks on the sea.



Deck 10, Midship (7-18517)  
(14-17 years old)

10:00 am - 2:00 am

### ANYONE CAN COOK: PIZZA

10:00 pm

Anyone can cook as we work together to create some of our favorite treats. From our galley to yours; join our chef as they show you how to create pizza!

### GENDER WARS

11:00 pm

Join us as we find out who really are the kings or queens of the castle.

# BUENA VISTA THEATRE

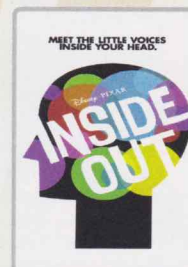
Deck 5, Aft  
Today's Movies

DOLBY 3D

Subtítulos en Español

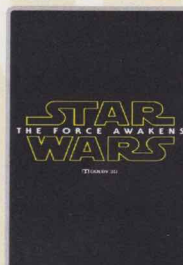


10:00 am, 5:45 pm &  
8:15 pm  
Duration: 1 hr 40 mins  
Rating: PG

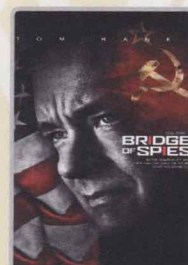


12:15 pm  
Duration: 1 hr 42 mins  
Rating: PG

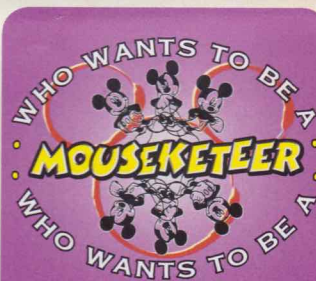
DOLBY 3D



2:45 pm  
Duration: 2 hrs 16 mins  
Rating: PG-13



10:30 pm  
Duration: 2 hrs 15 mins  
Rating: PG-13



## FAMILY GAME SHOW

Your chance to get into the world famous hot seat and win an exclusive prize in our version of the well known television game show.

D Lounge,  
Deck 4, Midship,  
7:30 pm & 9:45 pm



## ADULT GAME SHOW

It's time to play everyone's favorite couple's game show, Match your Mate!

Fathoms (18+),  
Deck 3, Forward  
10:15 pm

## YOUTH ACTIVITIES OPEN HOUSE

Open House is an opportunity for all to come and participate in a variety of exciting activities and free time in the Oceaneer Club, Oceaneer Lab, it's a small world nursery, Vibe and Edge throughout the cruise. During these times secured programming will still be offered in the other venue for those looking to check their children into care.

Edge: 9:00 am - 10:00 am & 5:30 pm - 6:30 pm

Vibe: 10:00 am - 11:00 am & 6:30 pm - 7:30 pm

Disney's Oceaneer Club: 11:00 am - 1:00 pm & 6:00 pm - 7:00 pm

Disney's Oceaneer Lab: 9:00 am - 11:00 am

# MORE TO ENJOY WHILE ONBOARD



## ALASKA AWAITS

Take your family on an Alaskan adventure they'll never forget! Sail through magnificent fjords fed by glaciers. Discover untamed nature and walk in the footsteps of prospectors. Begin your adventure today! Visit Disney Vacation Planning, Deck 4, Midship, to learn more about our special onboard booking offer.



## DISNEY VACATION CLUB® GROUP PREVIEW

Want to learn more about taking magical vacations year after year? Please see a Disney Vacation Club representative on Deck 4, Midship, or call 7-2805 from your stateroom phone for more information about our interactive group presentation.



## PORT AND SHOPPING INFORMATION

You do not want to miss out on the unbelievable shopping in Key West! Tune into channel 26-6 for Port & Shopping information.

## Connect @ Sea

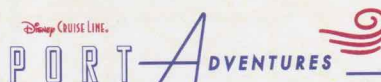
We are now offering a NEW and improved Internet service to stay connected on your cruise like no other in the industry! Internet packages range from \$0.25 per MB - \$89.00 (1000 MB package). For more information contact your Connect@Sea Expert or Guest Services onboard.

## ONBOARD AIRLINE CHECK IN

Stop by the Guest Services Desk, Deck 3, Midship to find out about enrolling in our Onboard Airline Check In Service.

## TRANSPORTATION INFORMATION

Should you wish to purchase transportation to the Miami International Airport, kindly proceed to Guest Services on Deck 3, Midship, for further assistance.



Key West is an exciting port of call not far off the coast of the continental United States. As the largest island in Florida, Key West measures 4 miles long and 2 miles wide and is a tourist destination made famous in the last century for being the residence and occasional inspiration for notable writers Ernest Hemingway and Tennessee Williams. The island represents the southernmost point in the continental U.S., and because of proximity to the Gulf Stream, enjoys a mild tropical climate.

Many memories await, what's your adventure?

Port Adventures Desk, Deck 3, Midship.



## IONITHERMIE

### Super Detox Treatments

Lose between 1 - 8 inches, speed up your metabolism, rid off puffiness, smooth your skin and firm your muscle without any pain of hard exercise

1 Session for \$155, 3 Sessions for \$299.00

Deck 9, Forward - Phone : 7-1465

## SHOPPING

### SOPHIA FIORI DISNEY INSPIRED JEWELRY

Discover the elegant Disney inspired diamond jewelry collection by Sophia Fiori, one of the world's leading designers of diamond jewelry when you visit White Caps, Deck 4, Forward.

### OFFICER PIN TRADING

Come and trade pins with the Officers of the Disney Magic Cruise Ship at 7:15 pm in Preludes, Deck 4, Forward.

### FESTIVE SOUVENIRS AVAILABLE ONBOARD

Commemorate your Very MerryTime Cruise with festive souvenirs such as a mug, tree ornament, or pillow designed especially for Disney Cruise Line. Mickey's Mainsail, Deck 4, Forward.

### BIBBIDI BOBBIDI BOUTIQUE

Fairy Godmothers-in-Training are ready with magic and pixie dust to give your Prince and Princess the transformation of a lifetime. Available for a limited time, princesses can select the festive Holiday Minnie Package! Make your reservations by visiting Bibbidi Bobbidi Boutique, Deck 10, Forward or dialing extension 7-1492. Limited space available.

### FESTIVE HOLIDAY TREE ORNAMENTS

Adorn your tree this year with the festive holiday ornaments available onboard such as the candy cane striped anchor ornament designed especially for Disney Cruise Line available in Mickey's Mainsail and the sparkling Swarovski ornaments available in White Caps. Deck 4, Forward.

### HAIR BRAIDING ONBOARD

Add some flair to your hair when you visit a Disney Cruise Line® hair braiding station! Stop by a station today for more information and to learn all about the available braiding styles. Subject to restrictions and availability. Deck 9, Midship.

Due to port regulations, when the ship is docked, the stores will remain closed.

## Bibbidi Bobbidi Boutique



Fairy Godmothers-in-Training are ready to give your Prince and Princess the transformation of a lifetime.

Available for a limited time, princesses can select the festive Holiday Minnie Package!

Make your reservations by visiting Bibbidi Bobbidi Boutique, Deck 10, Forward or dialing extension 7-1492. Limited space available.

1 DAY UNTIL CHRISTMAS!



## GET THE PICTURE!

Ask a friendly photographer about Get the Picture! and the incredible value of an unlimited digital photo package, which includes all of your stateroom's photos. Visit Shutters today, as supplies are limited.

Terms and conditions apply. Photos captured on your vacation are only available for purchase during this cruise.

## IMPORTANT INFORMATION

### Security Notice

All Guests (including Children) who wish to disembark or embark the ship are required to present their Key to the World card at the gangway. A photo ID is also required for those Guests who are 18 years of age or older. Guests under the age of 18 are required to have a parent, guardian or other responsible adult sign an authorization form at the Guest Service Desk if they wish to go ashore unaccompanied or with any adult from another stateroom.

**Sunscreen/Insect Repellent Advisory**  
Use sunscreen first and protect against mosquito bites and related illnesses by applying insect repellent on top of sunscreen when going ashore. Insect repellent is available for purchase in White Caps.

### Cold and Flu Reminder

Please wash hands frequently and thoroughly, particularly before meals. Contact the Health Center by dialing 7-1923, should anyone in your party become ill.

### Inclement Weather

For the safety of all Guests, outdoor events may be changed due to unforeseen weather conditions.

### Corridor Quiet Hours

As a courtesy to all our Guests, please recognize quiet hallway hours from 10:00 p.m. til 8:00 a.m.

### Environmental Message

With Disney's commitment to the Environment please refrain from throwing anything over the Ship's side. Thank you.

### No Reserved Seats Policy

As a courtesy to all Guests we kindly advise that the saving of seats is not permitted in the Walt Disney Theatre, and the saving of the sun loungers is not permitted on Deck 9 and 10. Items left unattended will be returned to lost and found at Guest Services, Deck 3, Midship.

### Smoking

For the comfort of our guests, the following areas are designated as smoking areas:

- Deck 9, Forward, Port Side
- Deck 4, Starboard Side from 6:00 pm to 6:00 am only (all of Deck 4 is non-smoking from 6:00 am to 6:00 pm)

Smoking is prohibited inside all Guest staterooms and on stateroom verandahs. Guests found smoking in their staterooms or on their verandahs will be charged a \$250 stateroom recovery fee.

### Walt Disney Theatre

Theatrical performances may use artificial fog, strobe lights, pyrotechnics and other special effects. For the safety of our performers and the comfort of those around you, the use of any photography or video recording device or any electronic equipment is prohibited.

### Verandah Safety

Please do not leave any combustible materials on your balcony when not present in your stateroom for safety reasons.

Morning	8:30	8:45	9:00	9:15	9:30	9:45	10:00	10:15	10:30	10:45	11:00	11:15	11:30	11:45	12:00	12:15	12:30	12:45	1:00	1:15	1:30				
FUNNEL VISION	Cinderella (Classic) (G) Funnel Vision						Tangled (PG) Funnel Vision						The Muppet Christmas Carol (PG) Funnel Vision												
BUENA VISTA THEATRE	Daily Mass Buena Vista Theatre					The Good Dinosaur (PG) <b>DOLBY 3D</b> Duration: 1 Hour 40 Minutes					Inside Out (PG) - Spanish Subtitles Duration: 1 Hour 42 Minutes														
CHARACTERS																									
FUN FOR ALL AGES	Daily Mass Buena Vista Theatre					Anyone Can Cook: Cookies Disney's Oceaneer Lab					Mouseketeer Training Disney's Oceaneer Club					Become Iron Man! Disney's Oceaneer Club					Pictionary Challenge Promenade Lounge				
ADULTS																									
	Friends of Bill W. Keys		Group Cycling Senses Spa Fitness Center																						
															Pamper Party Senses Spa Fitness Center										
VIBE 14-17 YEARS OLD						Youth Activities Open House					Holiday Animation Cells					Craft Corner		Game Challenge					Scavenger Hunt		
EDGE 11-14 YEARS OLD			Youth Activities Open House			Holiday Animation Cells					Newsies: Get Up and Go!			Craft Corner			GAGA Ball								
OCEANEER LAB 3-12 YEARS OLD			Youth Activities Open House								Marshmallow Olympics					Lunch			Super Sloppy Science						
						Anyone Can Cook: Cookies																			
OCEANEER CLUB 3-12 YEARS OLD	Cartoon Time	All About Me	Little Einstein's Adventure			Become Iron Man!					Youth Activities Open House					Holiday Choir Rehearsal					Aladdin's Fun Adventures				
											Mouseketeer Training					Become Iron Man!									

Afternoon	1:45	2:00	2:15	2:30	2:45	3:00	3:15	3:30	3:45	4:00	4:15	4:30	4:45	5:00	5:15	5:30	5:45	6:00	6:15	6:30	6:45	
FUNNEL VISION	Wreck-It Ralph (PG) Funnel Vision							Mickey's Once Upon A Christmas (G) Funnel Vision							Mickey's Christmas Carol(G) Funnel Vision				The Nightmare Before Christmas (PG) Funnel Vision			
BUENA VISTA THEATRE						Star Wars: The Force Awakens (PG-13)  DOLBY 3D Duration: 2 Hours 16 Minutes										The Good Dinosaur (PG)  DOLBY 3D Duration: 1 Hour 40 Minutes						
CHARACTERS																			Daisy DK4 Mid (S)			
																			Mickey Lobby Atrium (P)			
FUN FOR ALL AGES			Holiday Crafts Promenade Lounge					Who Am I? Promenade Lounge					Disney Trivia Promenade Lounge			 Lobby Atrium						
													Toddler Time Promenade Lounge			Live Music with Rodrigo Figueroa Promenade Lounge			 Walt Disney Theatre			
																Live Music with Midtown Lobby Atrium						
ADULTS								Xbox Challenge O'Gills Pub					Art of The Theme Show Tour Palo			1820 Society: Ice Cream Social Eye Scream						
			Back Pain Solutions Keys								Pure Form Pilates Senses Spa & Salon						Footprint Analysis Senses Spa & Salon					
VIBE 14-17 YEARS OLD	Scavenger Hunt			Trivia Time		Ice Cream Social			Sports Deck Fun			Villains			4th Pigs Pasta Palace					Open House		
EDGE 11-14 YEARS OLD	Ice Cream Social			Sports Deck Fun						Animation Antics			Four Square			Youth Activities Open House					Disney Fantasia: Music Evolved	
OCEANEER LAB 3-12 YEARS OLD			Oceaneer Rangers			A to Z Scavenger Hunt			Cookie Decorating		Goofy Files			GAGA Ball			Game Challenge		Dinner			
OCEANEER CLUB 3-12 YEARS OLD	Aladdin's Fun Adventures		Scavenger Hunt			Game Challenge					Dress Up Fun		The Royal Ball		Craft Corner				Youth Activities Open House			

Evening	7:00	7:15	7:30	7:45	8:00	8:15	8:30	8:45	9:00	9:15	9:30	9:45	10:00	10:15	10:30	10:45	11:00	11:15	11:30	11:45	12:00
FUNNEL VISION	NFL Thursday Night Football: Chargers vs Raiders Funnel Vision (Subject to satellite availability)																				
BUENA VISTA THEATRE							The Good Dinosaur (PG) <b>DOLBY 3D</b> Duration: 1 Hour 40 Minutes						Bridge of Spies (PG-13) Duration: 2 Hours 15 Minutes								
CHARACTERS			Pluto DK4 Mid (S)		Donald DK4 Mid (S)					Goofy DK4 Mid (S)											
			Mickey Lobby Atrium (P)		Minnie Lobby Atrium (P)					Minnie Lobby Atrium (P)											
FUN FOR ALL AGES			Senses Spa Jackpot 																	Midnight Christmas Mass Walt Disney Theatre	
		Officer Pin Trading Preludes	Who Wants to be a Mouseketeer? D Lounge											Live Music with Soul Duo Promenade Lounge	Disney Tunes Trivia Promenade Lounge	Live Music with Soul Duo Promenade Lounge					
ADULTS	Joanna & Tadhg LIVE O'Gills Pub	TV Tunes Trivia O'Gills Pub			Joanna & Tadhg LIVE O'Gills Pub							Cruise Staff DJ Fathoms		Cruise Staff DJ Fathoms							
		Live Piano with Chuck Perry Keys			NFL Thursday Night Football: Chargers vs Raiders O'Gills Pub (Subject to satellite availability)						Live Piano with Chuck Perry Keys										
VIBE 14-17 YEARS OLD	Open House	Guesstures				AquaDunk Fun		Brain Teasers		Anyone Can Cook: Pizza				Gender Wars							
EDGE 11-14 YEARS OLD	Disney Fantasia: Music Evolved		Magic Show			AquaDuck Fun		Marshmallow Olympics		Anyone Can Cook: Pizza				Gender Wars							
OCEANEER LAB 3-12 YEARS OLD	Pathfinders	Piston Cup Challenge				Who Wants To Be A Mouseketeer		4 Square Competition		Magic Show		Video Game Challenge			Guesstures						
OCEANEER CLUB	Game Challenge	Marvel Avengers Academy				Become Iron Man!				Pluto's Pajama Party				Cartoon Time							

Symbol for activities that will be repeated during the cruise



FOLD

FOLD along the dotted lines and take me with you so you don't miss any of the fun!

FOLD

IN THE SPOTLIGHT SERIES  
SOLVE IT! SERIES  
JUMP UP! SERIES  
CREATE & INVENT SERIES  
CLUBHOUSE SERIES  
STORYBOOK SERIES

# BUENA VISTA THEATRE

Deck 5, Aft

DOLBY 3D

Subtítulos en Español

DOLBY 3D



10:00 am, 5:45 pm  
& 8:15 pm  
Duration:  
1 hr 40 mins  
Rating: PG



12:15 pm  
Duration:  
1 hr 42 mins  
Rating: PG



2:45 pm  
Duration:  
2 hrs 16 mins  
Rating: PG-13



10:30 pm  
Duration:  
2 hrs 15 mins  
Rating: PG-13

## Character Appearances

**SANTA'S WINTER WONDERLAND BALL**  
Lobby Atrium - 4:15 pm

**MINNIE MOUSE**  
Lobby Atrium (P)  
8:00 pm & 9:30 pm

**DAISY DUCK**  
DK4 Mid (S) - 5:45 pm

**GOOFY**  
DK4 Mid (S) - 9:30 pm

**MICKEY MOUSE**  
Lobby Atrium (P)  
5:45 pm & 7:30 pm

**STORYTIME WITH MRS. CLAUS**  
Lobby Atrium - 10:15 pm

**PLUTO**  
DK4 Mid (S) - 7:30 pm

**DONALD DUCK**  
DK4 Mid (S) - 8:00 pm



(P) - Portside, (S) - Starboard Side

Don't forget your Camera to capture those Magical Moments!

Check here each day for Character appearances.

For detailed Character appearance information see the Character Information Board in the Lobby Atrium.

Meet-and-Greets will be advertised for the length of time the line will be open. To avoid disappointment, please meet at start time of appearances.

## YOUTH ACTIVITIES THEMED EXPERIENCES

**CLUBHOUSE SERIES**  
focuses on movement and features content which appeals to younger children.

**JUMP UP! SERIES**  
includes large group games & movement-oriented activities.

**CREATE & INVENT SERIES**  
will have a tactile focus allowing children to create and admire their work.

**STORYBOOK SERIES**  
is designed with a strong connection to the Disney classic stories.

**IN THE SPOTLIGHT SERIES**  
focuses on children's stage presence with lots of activities and enthusiasm.

**SOLVE IT! SERIES**  
are less active, but will challenge children with problem/solutions-based activities.

### YOUTH ACTIVITIES OPEN HOUSE

Activities for families, adults and children of all ages to enjoy together.

## SHIP DIRECTORY

### YOUTH ACTIVITIES

DISNEY'S OCEANEER CLUB	DECK 5, MID	7:30 AM - 12:00 PM
DISNEY'S OCEANEER LAB	DECK 5, MID	9:00 AM - 12:00 AM
EDGE	DECK 9, MID	9:00 AM - 1:00 AM
IT'S A SMALL WORLD NURSERY	DECK 5, AFT	7:30 AM - 11:00 PM
VIBE	DECK 10, MID	10:00 AM - 2:00 AM

### POOLS

\*Children under 12 years of age must have adult supervision in all pools.

AQUADUNK	DECK 10, MID	1:00 PM - 5:15 PM 6:00 PM - 9:00 PM
AQUALAB	DECK 9, AFT	8:30 AM - 8:00 PM
GOOFY'S POOL	DECK 9, MID	9:00 AM - 6:00 PM 8:00 PM - 10:00 PM
NEPHEWS' SPLASH ZONE	DECK 9, AFT	8:30 AM - 6:00 PM
QUIET COVE POOL (18+)	DECK 9, FWD	8:00 AM - 10:00 PM
TWIST 'N' SPOUT	DECK 9, AFT	1:00 PM - 9:00 PM

Complimentary pool vests are available for children to use in the pools onboard.  
They are located on the pool deck.

### RECREATION

PORT ADVENTURES DESK	DECK 3, MID	8:00 AM - 12:00 PM
SENSES FITNESS CENTER (18+)	DECK 9, FWD	6:00 AM - 10:00 PM
WIDE WORLD OF SPORTS DECK	DECK 10, FWD	24 HOURS

### GENERAL INFORMATION

BUENA VISTA THEATRE	DECK 5, AFT	SHOWTIMES
DISNEY VACATION CLUB DESK	DECK 4, MID	8:30 AM - 10:30 AM 5:30 PM - 10:00 PM
DISNEY VACATION PLANNING DESK	DECK 4, MID	8:00 AM - 9:30 AM 4:00 PM - 6:00 PM 7:30 PM - 9:30 PM
FUNNEL VISION	DECK 9, MID	SHOWTIMES
GUEST SERVICES	DECK 3, MID	24 HOURS
HAIR BRAIDING	DECK 9, MID	4:00 PM - 6:00 PM 7:00 PM - 9:00 PM
MEDICAL HEALTH CENTER	DECK 1, FWD	9:30 AM - 11:00 AM 4:30 PM - 7:00 PM
PORT & SHOPPING DESK	DECK 3, MID	
PRELUDES	DECK 4, FWD	5:30 PM - 9:00 PM
SENSES SPA AND SALON	DECK 9, FWD	8:00 AM - 10:00 PM
SHUTTERS PHOTO GALLERY	DECK 4, AFT	5:30 PM - 10:00 PM
WALT DISNEY THEATRE	DECK 4, FWD	SHOWTIMES

### SHOPPING

BIBBIDI BOBBIDI BOUTIQUE	DECK 10, FWD	9:00 AM - 9:00 PM
MICKEY'S MAINSAIL	DECK 4, FWD	6:30 PM - 11:00 PM
QUACKS	DECK 9, MID	
SEA TREASURES	DECK 3, FWD	6:30 PM - 11:00 PM
VISTA GALLERY	DECK 4, MID	6:30 PM - 10:30 PM
WHITE CAPS	DECK 4, FWD	6:30 PM - 11:00 PM

## IMPORTANT NUMBERS

Fire/Security: 7-3001  
Medical EMERGENCY: 7-3000  
Health Center: 7-1923

**DINNER MENU**  
 Animator's Palate : Pacific Rim Cuisine  
 Carioca's : South American Cuisine  
 Lumiere's : French Cuisine

**DRINK OF THE DAY**  
 Yellow Bird (Alcoholic)  
 Passion Cream Freeze (Non-Alcoholic)

**WEATHER FORECAST**  
 Today: Partly Sunny  
 High: 78°F/26°C  
 Tomorrow: Partly Cloudy  
 High: 78°F/26°C

**Evening Attire: Cruise Casual**

## DINING & LOUNGES

### BREAKFAST

CABANAS	DECK 9, AFT	7:00 AM - 11:00 AM
DAISY'S DE LITES	DECK 9, AFT	6:30 AM - 8:30 AM
LUMIERE'S (À-LA CARTE)	DECK 3, MID	7:30 AM - 9:00 AM

### LUNCH

CABANAS	DECK 9, AFT	11:45 AM - 2:00 PM
DAISY'S DE LITES	DECK 9, AFT	10:30 AM - 6:00 PM
LUMIERE'S (À-LA CARTE)	DECK 3, MID	12:00 PM - 1:30 PM
PALO (BRUNCH)	DECK 10, AFT	9:30 AM - 11:30 AM
PETE'S BOILER BITES	DECK 9, AFT	10:30 AM - 6:00 PM
PINOCCHIO'S PIZZERIA	DECK 9, MID	10:30 AM - 6:00 PM

### DINNER

ANIMATOR'S PALATE	DECK 4, AFT	5:45 PM & 8:15 PM
CARIOCA'S	DECK 3, AFT	5:45 PM & 8:15 PM
LUMIERE'S (À-LA CARTE)	DECK 3, MID	5:45 PM & 8:15 PM
PALO (FOR RESERVATIONS CALL 7-6843)	DECK 10, AFT	6:00 PM - 8:30 PM
PETE'S BOILER BITES	DECK 9, AFT	6:00 PM - 10:00 PM

### LATE NIGHT SNACKS

O'GILLS PUB	DECK 3, FWD	10:45 PM - 11:30 PM
PINOCCHIO'S PIZZERIA	DECK 9, MID	9:30 PM - 12:00 AM
PROMENADE LOUNGE	DECK 3, AFT	10:45 PM - 11:30 PM

### ADDED FEATURES

EYE SCREAM	DECK 9, AFT	10:30 AM - 11:00 PM
BEVERAGE STATION	DECK 9, AFT	24 HOURS
ROOM SERVICE	DIAL 7-4330	24 HOURS

### ENTERTAINMENT - LOUNGES - BARS

Adults must be 21 and older to consume alcoholic beverages.

AFTER HOURS	DECK 3, FWD	(AFTER 9:00 P.M. ADULTS ONLY)
COVE CAFE (18+)	DECK 9, MID	6:30 AM - 12:00 AM
D LOUNGE	DECK 4, MID	SHOWTIMES
FATHOMS (18+)	DECK 3, FWD	7:00 PM - 1:30 AM
FROZONE TREATS	DECK 9, AFT	11:00 AM - 6:00 PM
KEYS (18+)	DECK 3, FWD	6:00 PM - 12:30 AM
O'GILLS PUB (18+)	DECK 3, FWD	4:00 PM - 12:00 AM
PRELUDES	DECK 4, FWD	5:30 PM - 9:00 PM
PROMENADE LOUNGE	DECK 3, AFT	7:30 AM - 12:00 AM
PINOCCHIO'S PIZZERIA	DECK 9, MID	
SIGNALS (18+)	DECK 9, FWD	11:00 AM - 11:00 PM

Public Health Advisory: Consuming raw or undercooked meats, poultry, seafood, shellfish, or eggs may increase your risk for foodborne illness, especially if you have certain medical condition.

**All Ashore: Approx. 8:00 am**  
**All Aboard: 5:45 pm**

**Ship's Agent in Key West**

P.O. Box 285, Key West, FL 33041

Ms. Julie Kostick

T: 605 294 3288; Mobile: 305 797 0853