

# PERSONAL NAVIGATOR

MONDAY, DECEMBER 28, 2015



Sunrise 7:22 am Sunset 6:15 pm  
Evening Attire: Cruise Casual  
All Ashore: 8:30 am All Aboard: 4:45 pm

Today: Partly Cloudy High: 82°F/28°C  
Tomorrow: Sunny High: 80°F/27°C

COZUMEL, MEXICO

## SHOWTIME FEATURING THE COMEDY, MAGIC & BALLOONS OF John Cassidy

WALT DISNEY THEATRE  
DECK 3 & 4, FORWARD  
6:15 pm & 8:30 pm

As a courtesy to all Guests, we kindly advise  
that the saving of seats is **not** permitted in the  
Walt Disney Theatre.

Assistance available at the entrance to the Walt Disney Theatre 30 minutes prior to show time.



### Cozumel Port Information

Cozumel, Mexico is an invigorating port of call on a Caribbean Cruise vacation. An island and a city off the eastern coast of Mexico's Yucatan Peninsula, Cozumel is known for some of the world's healthiest coral reefs and rarest natural recreation. This island in the Caribbean Sea is an extremely popular destination for scuba-diving and snorkeling enthusiasts.

The Mayans considered the site sacred to the Moon Goddess, Ixchel, and women would make regular pilgrimages there to pay tribute and to wish for fertility in return.

The arrival of the Spanish in 1518 brought disease and devastation, nearly wiping out the Mayans and leaving the island all but deserted by 1570. It was an outpost for pirates until 1848, when warfare in the Yucatan drove refugees to settle there. A boom in visitors to the island came after 1959, when the famed Jacques Cousteau publicized Cozumel's coral reefs as among the best in the world for scuba diving.

Today, Guests can let their imaginations take flight in the island the Mayans named Cozumel—the "Island of the Swallows"—so long ago.

#### DOCKING

The ship will dock at the Punta Langosta pier. The pier is located downtown, with walk off access right into the city of Cozumel.



#### FAMILY GAME SHOW

Bring the entire family and  
test your Disney knowledge  
in the high-tech interactive  
game show, Family Fusion.

D Lounge,  
Deck 4, Midship,  
10:15 pm

### Don't Miss:

#### Good Morning Disney Fantasy

Channel 5 - Repeated from 5:00 am - 12:00 pm

Tune in to channel 5 as your Cruise Director and Assistant Cruise Director highlight the upcoming events and activities for the day.

#### Chip-It Golf (12+)

Lobby Atrium, Deck 3, Midship - 3:00 pm

It's par for the course for our Guests 12 and older to compete on our special "greens" in this fun tournament.

#### Ice Breakers (18+)

The Tube, Deck 4, Aft - 10:15 pm

Fancy some fun? Want to get to know your fellow Guests? Then join us as we break the ice in this fun filled game show.

#### Variety Show: Dale K (18+)

The Tube, Deck 4, Aft - 10:45 pm

Featuring the Hypnosis & Comedy of Dale K, as he entertains you in this adult exclusive show.

#### Family Superstar Karaoke

D Lounge, Deck 4, Midship - 10:45 pm

Join your Cruise Staff in D Lounge tonight and sing along to your favorite song - fun for everyone.

Disney Cruise Line

PORT ADVENTURES

#### IMPORTANT INFORMATION

Please check your tour tickets for meeting times and locations.  
Visit the Port Adventures desk, Deck 5, Midship for any questions.

### DINNER MENU

Animator's Palate : Pacific Rim Cuisine  
Enchanted Garden : Continental Market Cuisine  
Royal Court : French Cuisine

### DRINK OF THE DAY

Yellow Bird (Alcoholic)  
Lava Smoothie (Non-Alcoholic)

#### IMPORTANT NUMBERS

Fire/Security: 7-3001  
Medical Emergency: 7-3000  
Health Center: 7-1923



# ADULT ACTIVITY HIGHLIGHTS



## SENSES SPA FITNESS CLASSES & SEMINARS

*Sunrise Stretch* - Donald's Pool - 7:00 am  
*Fab Abs* - Senses Fitness Center - 8:30 am  
*Pure Form Pilates* - Senses Fitness Center - 4:00 pm  
*Back Pain Solutions* - Senses Fitness Center - 4:30 pm  
*Burn Fat Faster* - Senses Fitness Center - 5:00 pm  
*Walk in Acupuncture Seminar* - Senses Fitness Center - 5:15 pm

## TASTING CLASSES

*Cognac Tasting* (21+) - Cove Cafe - 10:00 pm  
*Whiskey Tasting* (21+) - Meridian - 10:30 pm  
 Please make reservations for tastings at Guest Services for a nominal fee.  
 Tasting Seminars are only for Guests 21 and older.



## 1820 SOCIETY: GAME CHALLENGE

*The Tube, Deck 4, Aft - 9:45 pm*  
 Society members unite as a team for this interactive game.

## LIVE PIANO WITH CLARA OMAN

*La Piazza, Deck 4, Aft - 7:30 pm*  
 Join Clara Oman as she plays piano live for your listening pleasure.

## LIVE MUSIC WITH FIRELITES

*La Piazza, Deck 4, Aft - 9:30 pm & 11:15 pm*  
 Join FireLites as they play live tonight for your listening pleasure.

## ICE BREAKERS

*The Tube, Deck 4, Aft - 10:15 pm*  
 Fancy some fun? Want to get to know your fellow Guests? Then join us as we break the ice in this fun filled game show.

# FUN FOR ALL AGES HIGHLIGHTS

## CRAFTS: ORIGAMI FAVORITES

*La Piazza, Deck 4, Aft - 1:45 pm*  
 Your Cruise Staff teaches you the ancient art of paper folding.

## TODDLER TIME

*Outlook, Deck 14, Midship - 3:00 pm*  
 Join us for some fun activities that your toddler is sure to enjoy.



## CHIP-IT GOLF (12+)

*Lobby Atrium, Deck 3, Midship - 3:00 pm*  
 It's par for the course for our Guests 12 and older to compete on our special "greens" in this fun tournament.



## DISNEY VACATION CLUB GROUP PREVIEW

*D Lounge, Deck 4, Midship - 4:15 pm*  
 Want to learn more about taking magical vacations year after year? Please see a Disney Vacation Club representative on Deck 4, Midship, or call 7-2805 from your stateroom phone for more information about our interactive group presentation.

## FAMILY CRAFTS

*La Piazza, Deck 4, Aft - 4:45 pm*  
 Create a fun souvenir with your Cruise Staff that is yours to keep.



## DISNEY CRUISE LINE GIFT PACK JACKPOT BINGO

*Bingo Pre-Sales start at 7:15 pm*  
*D Lounge, Deck 4, Midship - 7:30 pm*  
 Four CASH prize games and four Disney Cruise Line gift packs to be won. The jackpot continues to grow and could go at any time! Pre-Sales start 15 minutes prior to the game.

## FAMILY DANCE PARTY

*D Lounge, Deck 4, Midship - 9:30 pm*  
 Bring the whole family and dance your cares away to some of your favorite hits!



## FAMILY FUSION

*D Lounge, Deck 4, Midship - 10:15 pm*  
 Bring the entire family and test your Disney knowledge in the high-tech interactive game show, Family Fusion.



## FAMILY SUPERSTAR KARAOKE

*D Lounge, Deck 4, Midship - 10:45 pm*  
 Join your Cruise Staff in D Lounge tonight and sing along to your favorite song - fun for everyone.

# SAFETY ASHORE INFORMATION

While you will find many great experiences ashore, please remain vigilant about your personal safety and the safety of your belongings. As in any large urban tourist destination, you'll want to take some basic precautions to make the most of your time ashore.

- Be aware of your surroundings at all times. Avoid short cuts, narrow alleys and poorly lit streets.
- Avoid wandering from the main shopping and tourist areas into unfamiliar territory. If venturing out independently, have a plan, use only licensed taxi operators.
- Identity/Credit Card theft can occur anywhere. Please remain vigilant in monitoring the safe keeping of your personal information.
- Leave valuables in your room safe and avoid carrying large amounts of cash. Exercise caution when using ATMs. Cameras and handbags should be carried close to your body or concealed out of sight.
- Leave air transportation tickets and other travel documents in your room safe. When going ashore, each adult is required to carry a Driver's license, passport or other government-issued photo ID. - Note: Some ports may require guests to carry passports ashore.
- Most crimes are easier to commit in dark unlit areas. When going ashore at night, please be extra vigilant about your personal safety.



# YOUTH ACTIVITY HIGHLIGHTS

## DINE & PLAY

A convenience for families dining at 8:15 pm, our Youth Activities counselors will be available at 9:15 pm at the entrance of Royal Court, Enchanted Garden and Animator's Palate dining rooms to bring registered children to join the fun in the Youth Activity areas.



**Deck 5, Midship (7-1440)**  
(3-12 years old) 7:30 am - 12:00 am

## BIG TOP FUN FEST!

6:00 pm

It's the greatest show on Earth. Come re-discover the circus Disney style with clowns, jugglers and classic Disney cartoons.

## HEFFALUMP EXPODISHUN

9:00 pm

The Heffalump is missing! Help us find him before the Woozles do!



**Deck 5, Midship (7-1445)**  
(3-12 years old) 9:00 am - 12:00 am

## DISNEY ANIMATION: CREATING A CHARACTER

3:00 pm

Go behind the scenes at Walt Disney Animation Studios as Walt Disney himself talks about his most famous characters, then learn the basic techniques of drawing Mickey and Donald in this fun and interesting enrichment program.

## GET THE HOOK

8:15 pm

A villainous villain has stolen Captain Hook's prized golden hook. Become a member of the Top Deck Detective Agency and help solve the clues to retrieve Hook's hook.



**Deck 13, Midship (7-9743)**  
(11-14 years old) 9:00 am - 1:00 am

## ANYONE CAN COOK

10:00 pm

Anyone can cook as we work together to create some of our favorite treats.

## MOVIE TIME

11:00 pm

Bring your friends and join us for a movie!



**Entrance on Deck 4, Forward (7-9418)**  
(14-17 years old) 10:00 am - 2:00 am

## SUPER SLOPPY SCIENCE

4:30 pm

Join Professor Make-O-Mess in some of the most extreme experiments you will ever see in the world of Super Sloppy Science!

## ANYONE CAN COOK

11:00 pm

Anyone can cook as we work together to create some of our favorite treats.

# BUENA VISTA THEATRE

Deck 4 & 5, Midship  
Today's Movies

Open Captioning



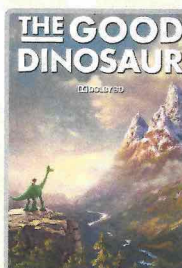
11:30 am  
Duration: 1 hr 57 mins  
Rating: PG-13

DOLBY 3D

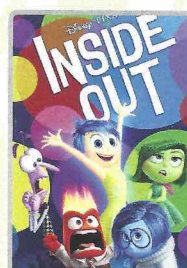


2:30 pm  
Duration: 2 hrs 15 mins  
Rating: PG-13

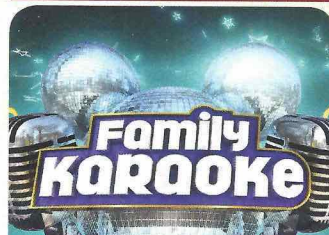
DOLBY 3D



5:45 pm & 8:15 pm  
Duration: 1 hr 40 mins  
Rating: PG



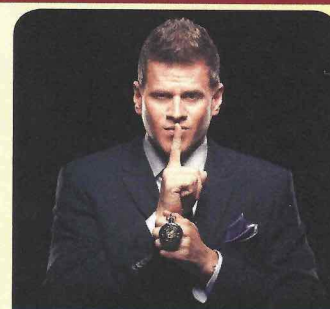
10:30 pm  
Duration: 1 hr 42 mins  
Rating: PG



## KARAOKE

Join your Cruise Staff in D Lounge tonight and sing along to your favorite song, fun for everyone.

**D Lounge,  
Deck 4, Midship,  
10:45 pm**



## ADULT VARIETY ACT

Featuring the  
Comedy & Hypnosis  
of Dale K,  
as he entertains you in this  
adult exclusive show.

**The Tube (18+),  
Deck 4, Aft,  
10:45 pm**

## YOUTH ACTIVITIES OPEN HOUSE

Open House is an opportunity for all to come and participate in a variety of exciting activities and free time in the Oceaneer Club, Oceaneer Lab, it's a small world nursery, Vibe and Edge throughout the cruise. During these times secured programming will still be offered in the other venue for those looking to check their children into care.

**Disney's Oceaneer Club:** 11:00 pm - 12:00 am

**Disney's Oceaneer Lab:** 9:00 am - 1:00 pm

**Edge:** 9:00 am - 10:00 am & 5:00 pm - 6:30 pm

**Vibe:** 10:00 am - 12:00 pm & 6:30 pm - 9:00 pm



# MORE TO ENJOY WHILE ONBOARD

## POPULAR HOME PORTS FOR LIMITED-TIME

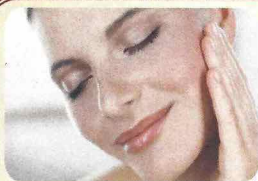
In the fall of 2016, Disney Cruise Line will return to New York with sailings to the Bahamas, Miami with longer 7-night voyages for the very first time, and a return to Galveston, TX with a line-up of 7-night itineraries including a stop at Castaway Cay to round out the season. Visit Disney Vacation Planning, Deck 4, Midship, for more information.

## DISNEY VACATION CLUB® GROUP PREVIEW

Want to learn more about taking magical vacations year after year? Please see a Disney Vacation Club representative on Deck 4, Midship, or call 7-2805 from your stateroom phone for more information about our interactive group presentation.

## PORT AND SHOPPING INFORMATION

Cozumel is not to be missed offering some of the best shopping this cruise! Meet your Port Shopping Guides, Candice and Mark, in Diamonds International #1a between 9:30 am - 11:30 am. Make sure to pick up your shopping map & coupons on the gangway and your voucher for a Free Sombrero Charm! Free all day raffle in Diamonds International.



## PAMPER PACKAGE

- 50 minute Full Body Massage
  - Foot & Ankle Massage
  - Indian Scalp Massage
  - 25 Minute Booster Facial
- ONLY \$149

Call Senses Spa & Salon, 7-1465



## SOPHIA FIORI DIAMONDS

Discover the elegant Disney inspired diamond jewelry collection by Sophia Fiori, one of the world's leading designers of diamond jewelry.

AVAILABLE AT WHITE CAPS  
DECK 3, FORWARD



## YOUR CRUISE PHOTOS

Order *Our Cruise Photos USB* and share your vacation memories digitally! No need to decide which photos to take home now. Select your photos from the comfort of your home. If you wish you can still unlock the photos on Digital kiosk in Shutters Digital.

Offer available per stateroom. Hurry as supplies are limited.

Please use the PHOTOFINDER tab on the kiosk or ask for assistance from a friendly photographer to help locate missing images.

*\*Terms and conditions apply. Photos captured on your vacation are only available for purchase during this cruise.*

## Connect@Sea

We are now offering a NEW and improved Internet service to stay connected on your cruise like no other in the industry! Internet packages range from \$0.25 per MB - \$89.00 (1000 MB package). For more information contact your Connect@Sea Expert or Guest Services onboard.

## ONBOARD AIRLINE CHECK IN

Stop by the Guest Services Desk, Deck 3, Midship to find out about enrolling in our Onboard Airline Check In Service.

## FREE ON DEMAND TV

Watch Disney movies, Hollywood features, ABC shows, and even captioned content, plus much more "On Demand" for FREE in the comfort of your stateroom! Bookmark your movie and come back to watch it later. Press MENU on your stateroom television remote control and follow the prompts.

Disney Cruise Line



Hola! We have arrived at the island paradise of Cozumel just off the coast of Mexico. This is the perfect day to enjoy the beach in Cozumel or explore the island on a Jeep tour.

There are a myriad of options so make sure to book your place at the Port Adventures desk, Deck 5, Midship.

## SHOPPING

### PIN TRADING ONBOARD!

Check out the Disney Cruise Line pins when you visit Mickey's Mainsail, Deck 3, Forward. Later, join fellow pin collectors for pin trading fun at 7:15 pm in Preludes, Deck 3, Forward.

### BIBBIDI BOBBIDI BOUTIQUE

Does your Princess have more than one transformation reserved during this voyage? The Royal Sea Package contains multiple transformations in addition to unique offerings such as a Royal Rolling Trunk and a Keepsake Glass Slipper. Inquire about upgrading your experience to the Royal Sea Package by visiting the Bibbidi Bobbidi Boutique or by dialing extension 7-9438.

### STYLISH WATCHES ONBOARD

Whether you need a tool for strict timekeeping or a fun fashion accessory, visit White Caps and browse the wide selection of stylish watches available including popular brands such as Skagen, Tissot, and Shinola. Deck 3, Forward.

### STYLISH STAR WARS DOONEY & BOURKE HANDBAGS

Loved for their fine leather and unique designs, Dooney & Bourke handbags are created with high-level craftsmanship. Visit White Caps and check out the stylish Dooney & Bourke handbags designs such as the Star Wars bags and the collections designed exclusively for Disney Cruise Line. Deck 3, Forward.

### ONE-OF-A-KIND PAINTED ANIMATOR PLATES AT THE VISTA GALLERY

Visit the Vista Gallery to view some of your favorite Disney characters as interpreted on original dessert plates from the Animator's Palate Restaurants on the Disney Magic® Cruise Ship and Disney Wonder® Cruise Ship. Painted by popular Disney artist, Mark Seppala, these one-of-a-kind works of art are available exclusively on Disney Cruise Line® while supplies last. Deck 4, Midship.

Due to port regulations, when the ship is docked, the stores will remain closed.

## IMPORTANT INFORMATION

### Security Notice

All Guests (including children) who wish to disembark the ship are required to present their Key to the World card at the gangway. A photo ID is also required for those Guests who are 18 years of age or older. Guests under the age of 18 are required to have a parent, guardian or other responsible adult sign an authorization form at the Guest Service Desk if they wish to go ashore unaccompanied or with any adult from another stateroom.

**Sunscreen/Insect Repellent Advisory**  
Use sunscreen first and protect against mosquito bites and related illnesses by applying insect repellent on top of sunscreen when going ashore. Insect repellent is available for purchase in White Caps.

### Cold and Flu Reminder

Please wash hands frequently and thoroughly, particularly before meals. Contact the Health Center by dialing 7-1923, should anyone in your party become ill.

### Corridor Quiet Hours

As a courtesy to all our Guests, please recognize quiet hallway hours from 10:00 pm til 8:00 am

### Inclement Weather

For the safety of all Guests, outdoor events may be changed due to unforeseen weather conditions.

### Environmental Message

With Disney's commitment to the Environment, please refrain from throwing anything over the Ship's side. Thank you!

### No Reserved Seats Policy

As a courtesy to all our Guests, we kindly advise that the saving of seats is not permitted in the Walt Disney Theatre, and the saving of the sun loungers is not permitted on Deck 11, 12, and 13. Items left unattended will be returned to lost and found at Guest Services, Deck 3 Midship.

### Smoking

For the comfort of our Guests, the following areas are designated as smoking areas:  
\*Deck 13, forward, port side by Currents  
\*Deck 12, aft, port side outdoor area that is accessible through the Meridian Lounge  
\*Deck 4, aft, port side from 6:00 pm to 6:00 am only (all of Deck 4 is non-smoking from 6:00 am to 6:00 pm)  
Smoking is prohibited inside all Guest staterooms and on stateroom verandahs. Guests found smoking in their staterooms or on their verandahs will be charged a \$250 stateroom recovery fee. Electronic cigarettes may only be used in designated smoking areas.

### Walt Disney Theatre

Theatrical performances may use artificial fog, strobe lights, pyrotechnics and other special effects. For the safety of our performers and the comfort of those around you, the use of any photography, video recording device or any electronic equipment is prohibited.

### Verandah Safety

Please do not leave any combustible materials on your balcony when not present in your stateroom for safety reasons.



Morning	8:30	8:45	9:00	9:15	9:30	9:45	10:00	10:15	10:30	10:45	11:00	11:15	11:30	11:45	12:00	12:15	12:30	12:45	1:00	1:15	1:30									
FUNNEL VISION	The Jungle Book (G) Funnel Vision					Monsters, Inc. (G) Funnel Vision										Tangled (PG) Funnel Vision														
BUENA VISTA THEATRE											Ant-Man (PG-13)  Open Captioning Duration: 1 Hour 57 Minutes																			
CHARACTERS	Don't forget your Camera to capture those Magical Moments!																													
	Please refer to the Character Board in the Lobby Atrium for detailed Character appearances.																													
FUN FOR ALL AGES	Youth Activities Open House  Edge					Youth Activities Open House  Vibe																								
	Youth Activities Open House  Disney's Oceaneer Lab																													
	PLAYMATION Disney's Oceaneer Lab					Port Adventures - Please check your tickets for meeting times and locations.																								
ADULTS	Fab Abs Senses Fitness Center		Friends of Bill W. Outlook		Board Games available in O'Gills Pub.																									
	Books and Magazines available in Cove Cafe.																													
VIBE 14-17 YEARS OLD						Youth Activities Open House  Edge										Teen Choice					Fifa Challenge									
EDGE 11-14 YEARS OLD			Youth Activities Open House  Edge			Craft Corner					Xbox Challenge					Matinee Movie														
OCEANEER LAB 3-12 YEARS OLD	Youth Activities Open House  Edge																													
OCEANEER CLUB 3-12 YEARS OLD	Craft Corner				Wii Challenge				Magic PlayFloor  Vibe							Lunch				Magic PlayFloor  Vibe										
			Scavenger Hunt									Parachute Games  Vibe									Craft Corner									
Afternoon	1:45	2:00	2:15	2:30	2:45	3:00	3:15	3:30	3:45	4:00	4:15	4:30	4:45	5:00	5:15	5:30	5:45	6:00	6:15	6:30	6:45									
FUNNEL VISION						Wreck-It Ralph (PG) Funnel Vision					Cinderella (Classic) - (G) Funnel Vision					Robin Hood - (G) Funnel Vision														
BUENA VISTA THEATRE											Bridge of Spies (PG-13) Duration: 2 Hours 15 Minutes												The Good Dinosaur (PG)  DOLBY 3D Duration: 1 Hour 40 Minutes							
CHARACTERS											Goofy Preludes				Donald Preludes				Pluto Preludes				Chip & Dale Preludes		Goofy Preludes					
											Mickey Dk 4, Balcony				Daisy Dk 4, Balcony				Minnie Dk 4, Balcony				Mickey Dk 4, Balcony							
FUN FOR ALL AGES	Crafts: Origami Favorites La Piazza						Chip It GOLF Lobby Atrium (12+)						Disney Vacation Club D Lounge - Group Preview						Live Piano with Clara Oman La Piazza			JOHN CASSIDY Walt Disney Theatre								
							Toddler Time Outlook						Family Crafts La Piazza			Live Music with Andrea & Rafaela Lobby Atrium														
ADULTS						Pure Form Pilates Senses Fitness Center					Back Pain Solutions Senses Fitness Center					Burn Fat Faster Senses Fitness Center														
VIBE 14-17 YEARS OLD						Boys and Girls Chill					Animation Cells					Super Sloppy Science					Wii Challenge					Teen Choice		Open House  Edge		
						Sports Deck Fun					Tween Choice					Game Challenge					Youth Activities Open House  Edge									
OCEANEER LAB 3-12 YEARS OLD						Float Fun Trivia										Bingo  Vibe										Magic PlayFloor  Vibe				
	Game Challenge										Disney Animation: Creating a Character										Dinner					Craft Corner  Vibe				
OCEANEER CLUB 3-12 YEARS OLD						Memory Wall										Magic Show														
	Craft Corner										Aloha Luau  Vibe																			
Evening	7:00	7:15	7:30	7:45	8:00	8:15	8:30	8:45	9:00	9:15	9:30	9:45	10:00	10:15	10:30	10:45	11:00	11:15	11:30	11:45	12:00									
FUNNEL VISION											LIVE Sports: NFL - Bengals vs. Broncos Funnel Vision (Subject to satellite availability)																			
BUENA VISTA THEATRE						The Good Dinosaur (PG)  DOLBY 3D Duration: 1 Hour 40 Minutes															Inside Out (PG)  DOLBY 3D Duration: 1 Hour 42 Minutes									
CHARACTERS			Pluto Preludes				Donald Preludes				Goofy Preludes				Daisy Dk 4, Balcony		Chip & Dale Preludes		Mickey Dk 4, Balcony				Minnie Dk 4, Balcony							
			Mickey Dk 4, Balcony		Tinker Bell Lobby Atrium (V)		Minnie Dk 4, Balcony						Tinker Bell Lobby Atrium (V)		Pluto Preludes															
FUN FOR ALL AGES			Bingo Pre Sales		BINGO D Lounge										JOHN CASSIDY Walt Disney Theatre				Family Dance Party D Lounge		Family Fusion D Lounge		FAMILY KARAOKE D Lounge							
	Family Dance Party The Tube		Majority Rules The Tube												Live Music with Andrea & Rafaela Lobby Atrium				Live Piano with Clara Oman Lobby Atrium											
ADULTS					Live Piano with Clara Oman La Piazza								DJ Requests The Tube				Ice Breakers The Tube		DALE K The Tube		The Comedy & Hypnosis		Club DJ Akshen The Tube							
											LIVE Sports: NFL - Bengals vs. Broncos O'Gills Pub (Subject to satellite availability)										Firelites LIVE La Piazza									
VIBE 14-17 YEARS OLD	Youth Activities Open House  Edge										Pump It Up					Gender Wars					Anyone Can Cook									
EDGE 11-14 YEARS OLD	Wii Challenge		ESPN Dream Team Draft Day - Baseball			Tween Choice					Gender Wars					Anyone Can Cook					Movie Time									
OCEANEER LAB 3-12 YEARS OLD	Super Sloppy Science  Vibe										Get the Hook  Vibe					Wii Challenge					Game Challenge									
						Pathfinders  Vibe										Game Challenge										Monster's Inc. Open "Mike" Night  Vibe				
OCEANEER CLUB 3-12 YEARS OLD	Memory Wall						Game Challenge				Heffalump Expodishun  Vibe						Magic PlayFloor  Vibe		Youth Activities Open House  Edge											
									Craft Corner						Pathfinders															

Symbol for activities that will be repeated during the cruise

Youth Activities Open House

FOLD

Fold along the dotted lines and take me with you so you don't miss any of the fun!

FOLD

IN THE SPOTLIGHT SERIES  
SOLVE IT'S SERIES

CLUBHOUSE SERIES  
CREATE & REPEAT SERIES

CLUBHOUSE SERIES  
STORYBOOK SERIES



MONDAY, DECEMBER 28, 2015 - COZUMEL, MEXICO

# BUENA VISTA THEATRE

Deck 4 & 5, Midship

Open Captioning



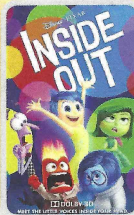
11:30 am  
Duration:  
1 hr 57 mins  
Rating: PG-13



2:30 pm  
Duration:  
2 hrs 15 mins  
Rating: PG-13



5:45 & 8:15 pm  
Duration:  
1 hr 40 mins  
Rating: PG



10:30 pm  
Duration:  
1 hr 42 mins  
Rating: PG

## Character Appearances

### GOOFY

Preludes  
4:00 pm, 6:00 pm & 8:15 pm

### MICKEY MOUSE

Deck 4, Balcony  
4:15 pm, 5:45 pm,  
7:30 pm & 10:00 pm

### DONALD DUCK

Preludes  
4:30 pm & 7:45 pm

### DAISY DUCK

Deck 4, Balcony  
4:45 pm & 9:30 pm

### PLUTO

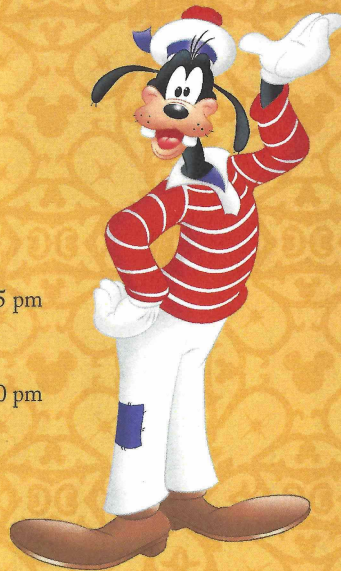
Preludes  
5:00 pm, 7:15 pm & 10:15 pm

### MINNIE MOUSE

Deck 4, Balcony  
5:15 pm, 8:00 pm & 10:30 pm

### CHIP & DALE

Preludes  
5:30 pm & 9:45 pm



(H) Hallway - (S) Starboard Side - (P) Port Side - (V) Vestibule

For details of daily Disney character appearances, refer to the character line on your Navigator Grid, or the digital character board in the Lobby Atrium.

## YOUTH ACTIVITIES THEMED EXPERIENCES

**CLUBHOUSE SERIES**  
focuses on movement and features content which appeals to younger children.

**JUMP UP! SERIES**  
includes large group games & movement-oriented activities.

**IN THE SPOTLIGHT SERIES**  
focuses on children's stage presence with lots of activities and enthusiasm.

**STORYBOOK SERIES**  
is designed with a strong connection to the Disney classic stories.

**CREATE & INVENT SERIES**  
will have a tactile focus allowing children to create and admire their work.

**SOLVE IT! SERIES**  
are less active, but will challenge children with problem/solutions-based activities.

## YOUTH ACTIVITIES OPEN HOUSE

A non-secured program with activities for families, adults and children of all ages to enjoy together.

## SHIP DIRECTORY

### YOUTH ACTIVITIES

DISNEY'S OCEANEER CLUB	DECK 5, MID	7:30 AM - 12:00 PM
DISNEY'S OCEANEER LAB	DECK 5, MID	9:00 AM - 12:00 PM
EDGE	DECK 13, MID	9:00 AM - 1:00 AM
VIBE	DECK 4, FWD	10:00 AM - 2:00 PM
IT'S A SMALL WORLD NURSERY	DECK 5, MID	7:30 AM - 11:45 PM

### POOLS & MORE

\* Children under 12 must have adult supervision in pool areas.

AQUADUCK	DECK 12, MID	9:00 AM - 10:00 PM
AQUALAB	DECK 12, AFT	1:00 PM - 7:00 PM
DONALD'S POOL	DECK 11, MID	9:00 AM - 10:00 PM
MICKEY'S POOL	DECK 11, MID	8:30 AM - 10:30 PM
MICKEY'S SLIDE	DECK 11, MID	9:00 AM - 6:00 PM
NEMO'S REEF	DECK 11, MID	9:00 AM - 6:00 PM
QUIET COVE POOL (18+)	DECK 11, FWD	8:00 AM - 11:00 PM
SATELLITE FALLS (18+)	DECK 13, FWD	6:00 AM - 8:00 PM

Complimentary pool vests are available for children to use in the pools onboard.  
They are located on the pool deck.

### RECREATION

GOLF/SPORTS SIMULATORS	DECK 13, AFT	9:00 AM - 6:00 PM
GOOFY GOLF	DECK 13, AFT	8:00 AM - 10:00 PM
GOOFY'S SPORTS DECK	DECK 13, AFT	8:00 AM - 6:00 PM
MIDSHIP DETECTIVE AGENCY	DECKS 2 & 5, MID	9:00 AM - 10:00 PM
PORT ADVENTURES DESK	DECK 5, MID	7:30 AM - 11:00 AM 7:00 PM - 8:30 PM
SENSES FITNESS CENTER (18+)	DECK 11, FWD	6:30 AM - 10:00 PM

### GENERAL INFORMATION

ARR-CADE	DECK 11, AFT	24 HOURS
DISNEY VACATION CLUB	DECK 4, MID	5:30 PM - 10:00 PM
DISNEY VACATION PLANNING	DECK 4, MID	8:00 AM - 10:00 AM 4:00 PM - 10:00 PM
GUEST SERVICES	DECK 3, MID	24 HOURS
MEDICAL HEALTH CENTER	DECK 1, FWD	9:30 AM - 11:00 AM 4:30 PM - 7:00 PM
PORT & SHOPPING DESK	DECK 4, MID	9:30 AM - 10:30 AM 7:30 PM - 8:30 PM
PRELUDES	DECK 3, FWD	5:45 PM - 8:45 PM
SENSES SPA AND SALON	DECK 11, FWD	8:00 AM - 10:00 PM
SHUTTERS PHOTO GALLERY	DECK 4, MID	5:30 PM - 10:30 PM
SHUTTERS DIGITAL	DECK 4, MID	24 HOURS

### SHOPPING

BIBBIDI BOBBIDI BOUTIQUE	DECK 5, MID	9:00 AM - 9:00 PM
MICKEY'S MAINSAIL	DECK 3, FWD	5:30 PM - 11:30 PM
QUACKS	DECK 11, MID	
SEA TREASURES	DECK 3, FWD	5:30 PM - 11:30 PM
VISTA GALLERY	DECK 4, MID	5:45 PM - 11:00 PM
WHITE CAPS	DECK 3, FWD	5:30 PM - 11:30 PM
WHOZITS & WHATZITS	DECK 11, MID	5:45 PM - 10:00 PM

## DINNER MENU

Animator's Palate : Pacific Rim Cuisine  
Enchanted Garden : Continental Market Cuisine  
Royal Court : French Cuisine

Dining Times: 5:45pm & 8:15pm

Evening Attire: Cruise Casual

## DRINK OF THE DAY

Yellow Bird (Alcoholic)  
Lava Smoothie (Non-Alcoholic)

## WEATHER FORECAST

Today: Partly Cloudy  
High: 82°F/28°C  
Tomorrow: Sunny  
High: 80°F/27°C

## DINING & LOUNGES

### BREAKFAST

CABANAS CONTINENTAL	DECK 11, AFT	6:15 AM - 6:45 AM
CABANAS	DECK 11, AFT	6:45 AM - 10:30 AM
ENCHANTED GARDEN	DECK 2, MID	7:15 AM - 9:15 AM
ROYAL COURT	DECK 3, MID	7:30 AM - 9:00 AM

### LUNCH

CABANAS	DECK 11, AFT	12:00 PM - 2:15 PM
FILLMORE'S FAVORITES	DECK 11, MID	10:45 AM - 6:30 PM
LUIGI'S PIZZA	DECK 11, MID	10:45 AM - 6:30 PM
ROYAL COURT	DECK 3, MID	12:00 PM - 1:30 PM
TOW MATER'S GRILL	DECK 11, MID	10:45 AM - 11:00 PM

### DINNER

ANIMATOR'S PALATE	DECK 3, AFT	5:45 PM & 8:15 PM
ENCHANTED GARDEN	DECK 2, MID	5:45 PM & 8:15 PM
ROYAL COURT	DECK 3, MID	5:45 PM & 8:15 PM
CABANAS TABLE SERVICE	DECK 11, AFT	6:30 PM - 8:30 PM
PALO (18+) (RESERVATIONS REQ. & NOM. FEE APPLIES)	DECK 12, AFT	6:00 PM - 8:30 PM
REMY (18+) (RESERVATIONS REQ. & NOM. FEE APPLIES)	DECK 12, AFT	6:00 PM - 8:30 PM

### LATE NIGHT SNACKS

LA PIAZZA (18+)	DECK 4, AFT	10:45 PM - 11:45 PM
LUIGI'S PIZZA	DECK 11, MID	9:30 PM - 12:00 AM

### ADDED FEATURES

BEVERAGE STATION	DECK 11, MID	24 HOURS
EYE SCREAM	DECK 11, MID	11:00 AM - 11:00 PM
ROOM SERVICE	DIAL 0	24 HOURS

### ENTERTAINMENT - LOUNGES - BARS

Adults must be 21 and older to consume alcoholic beverages.

BON VOYAGE	DECK 3, MID	3:00 PM - 11:00 PM
COVE BAR (18+)	DECK 11, FWD	10:00 AM - 11:00 PM
COVE CAFE (18+)	DECK 11, FWD	6:45 AM - 12:00 AM
CURRENTS (18+)	DECK 13, FWD	11:00 AM - 11:00 PM
D LOUNGE	DECK 4, MID	SHOWTIMES
FROZONE TREATS	DECK 11, MID	10:00 AM - 10:00 PM
LA PIAZZA (18+ AFTER 9:00 P.M.)	DECK 4, AFT	3:00 PM - 12:00 AM
MERIDIAN (18+)	DECK 12, AFT	3:00 PM - 12:00 AM
O'GILLS PUB (18+ AFTER 9:00 PM)	DECK 4, AFT	4:00 PM - 12:00 AM
OOH LA LA (18+)	DECK 4, AFT	5:00 PM - 12:00 AM
OUTLOOK	DECK 14, MID	
SKYLINE (18+)	DECK 4, AFT	5:00 PM - 12:30 AM
THE TUBE (18+ AFTER 9:00 P.M.)	DECK 4, AFT	7:00 PM - 8:15 PM 9:30 PM - 2:00 AM
VISTA CAFE	DECK 4, MID	7:00 AM - 11:00 PM
WAVES	DECK 12, AFT	1:00 PM - 6:00 PM

Public Health Advisory: Consuming raw or under-cooked meats, poultry, seafood, shellfish, or eggs may increase your risk for food borne illness, especially if you have certain medical condition.

All Ashore: Approx. 8:30 am

All Aboard: 4:45 pm

### SHIP'S AGENT IN COZUMEL

ACS (Agencia Consignataria del Sureste), Calle 6 Norte No. 14 X, 10 Y 15 Ave., Cozumel, Q. Roo., Mexico 77660. Tel. 521-987-873-9490

### IMPORTANT NUMBERS

Fire/Security: 7-3001  
Medical EMERGENCY: 7-3000  
Health Center: 7-1923