

PERSONAL NAVIGATOR



THURSDAY, JANUARY 14, 2016

Sunrise: 7:05 am Sunset: 5:43 pm
Evening Attire: Cruise Casual

Today: Partly Cloudy High: 68°F/20°C
Tomorrow: Partly Cloudy High: 66°F/19°C

DAY AT SEA

Disney's Believe

Genie from Aladdin and many of Disney's most beloved magic makers take a father on a magical journey to show him that anything is possible if you just believe.

WALT DISNEY THEATRE
DECK 3 & 4, FORWARD
6:15 pm & 8:30 pm

As a courtesy to all Guests, we kindly advise that the saving of seats is **not** permitted in the Walt Disney Theatre.



Assistance available at the entrance to the Walt Disney Theatre 30 minutes prior to show time.



Disney Dream Fun Facts

Tonnage: 129,690
Height: 66.13 m (217 feet)
Length: 339.8 m (1114.7 feet)

Important Dates

Name Announcement: March 2009
Steel Cutting: March 2009
Keel Laying: August 2009
Delivery: December 2010

Did you know?

The Sorcerer Mickey Mouse on the Disney Dream's stern is about 14 feet long. Constructed of stainless steel and fiberglass, it weighs approximately 2,500 pounds.



Debark Talk Broadcast

Important information regarding disembarkation procedures for your journey home will be covered in this debarkation briefing. The broadcast will be shown continuously on channel 5 of your stateroom television for your convenience. Please place your luggage outside your stateroom between 8:30 - 10:30 pm.

Thank you in advance for completing your comment card.



Mickey and Minnie along with the rest of the Walt Disney Characters invite you to join them in the ship's atrium for Sea Ya' Real Soon. You won't want to miss this very special farewell presentation.

Lobby Atrium,
Deck 3, Midship,
10:15 pm

Don't Miss:

Good Morning Disney Dream

Tune in to channel 8 as your Cruise Director highlights the upcoming events, activities and port information for the day.

Making of the Dream

Evolution, Deck 4, Aft - 9:45 am

Explore the origins of Disney Cruise Line and the latest and greatest innovations conjured especially for the Disney Dream in this fascinating and entertaining behind-the-scenes program.

Anyone Can Cook - Apple Strudel

D Lounge, Deck 4, Midship - 10:30 am

From our galley to yours. Join our chefs as they show you how to prepare delicious dishes. Today's Menu - Apple Strudel.

Jack-Jack's Incredible Diaper Dash

Lobby Atrium, Deck 3, Midship - 11:30 am

Calling all baby cruisers! It's time to take to the mat to see who's the fastest crawler of the seven seas! Register your baby 15 minutes prior to the big race.



Book Your Next Disney Vacation Today!

If you're thinking about booking a future Disney vacation, today is your last chance to save with special offers only available onboard! The last day of the cruise tends to get busy in the evening, so don't miss this opportunity to plan your next Disney vacation. Visit the Disney Vacation Planning Center, Deck 4, Midship, for more information.

DINNER MENU

Animator's Palate: Pacific Rim Crusine
Enchanted Garden: Continental Market
Royal Palace: French Dinner

DRINK OF THE DAY

High Tide (Alcoholic)
Princess Delight (Non Alcoholic)

IMPORTANT NUMBERS

Fire/Security: 7-3001
Medical Emergency: 7-3000
Health Center: 7-1923

ADULT ACTIVITY HIGHLIGHTS

SENSES SPA FITNESS CLASSES & SEMINARS

Wake Up & Stretch Class - Senses Fitness Center - 7:00 am
Fab Abs - Senses Fitness Center - 7:30 am
Body Sculpt Boot Camp (Nom. Fee) - Senses Fitness Center - 8:00 am
Group Cycling (Sign-Up Required) - Senses Fitness Center - 9:00 am
Introduction to Acupuncture - Senses Fitness Center - 9:30 am
How to Increase Your Metabolism - District Lounge - 11:00 am
Good Feet: Relieving Back Pain - Senses Fitness Center - 2:00 pm
Acupuncture: Chinese Herbs - Senses Fitness Center - 3:00 pm
Yoga - Senses Fitness Center - 4:00 pm

TASTING CLASSES

Chocolate & Liquor Tasting (21+) - Pink: Wine and Champagne Bar - 11:15 am
Stem to Stern Wine Tasting (21+) - Pink: Wine and Champagne Bar - 1:00 pm
Martini Tasting (21+) - Meridian - 2:00 pm
Mojito & Caipirinha Tasting (21+) - District Lounge - 3:00 pm
Mixology (21+) - Meridian - 4:00 pm
 Please make reservations for tastings at Guest Services for a nominal fee.
 Tasting Seminars are only for Guests 21 and older.

1820 SOCIETY: LUNCH

Royal Palace, Deck 3, Midship - 12:30 pm
 Get to know your fellow Society members over lunch.

1820 SOCIETY: JENGA CHALLENGE

Pub 687, Deck 4, Aft - 4:30 pm
 Have some fun with this classic game.

1820 SOCIETY: FAREWELL

Evolution, Deck 4, Aft - 9:45 pm
 Join your Cruise Staff and your new friends in this last gathering for some fun.

ANYONE CAN COOK: LOBSTER RAVIOLI

D Lounge, Deck 4, Midship - 3:00 pm
 From our galley to yours. Join our chefs as they show you how to prepare delicious dishes. Today's Menu - Lobster Ravioli

80'S MUSIC CHALLENGE

Evolution, Deck 4, Aft - 10:15 pm
 "Moon Walk" back to the 80's as we put your musical knowledge of the decade to the test.

FUN FOR ALL AGES HIGHLIGHTS



runDisney: OFFICE

Deck 4, Midship - 10:00 am - 12:00 pm

\$10,000 MEGA JACKPOT BINGO

Bingo Pre-Sales start at 11:00 am
Evolution, Deck 4, Aft - 11:15 am
 It's Big, it's Massive, it's Supersized! It's \$10,000 MEGA Jackpot Bingo! Take home \$10,000 if you can cover your card in 46 numbers or less. If not, we carry on to play for the biggest cash prize of the session, plus today's Disney Vacation Club sponsored raffle includes a \$100 Onboard Credit and prize-packs. Pre-Sales start 15 minutes prior to game.



JACK-JACK'S INCREDIBLE DIAPER DASH

Lobby Atrium, Deck 3, Midship - 11:30 am
 Calling all baby cruisers! It's time to take to the mat to see who's the fastest crawler of the seven seas! Register your baby 15 minutes prior to the big race.

DISNEY VACATION CLUB GROUP PREVIEW

D Lounge, Deck 4, Midship - 12:15 pm & 4:15 pm
 Want to learn more about taking magical vacations year after year? Please see a Disney Vacation Club representative on Deck 4, Midship, or call 7-2805 from your stateroom phone for more information about our interactive group presentation.



DISNEY ANIMATION: CREATING A CHARACTER

D Lounge, Deck 4, Midship - 1:15 pm
 Go behind the scenes at Walt Disney Animation Studios as Walt Disney himself talks about his most famous characters, then learn the basic techniques of drawing your favorite pals in this fun and interesting enrichment program.



TOWEL FOLDING

D Lounge, Deck 4, Midship - 2:00 pm
 Learn to create those amazing towel creatures you've seen in your stateroom all cruise long.

MICKEY 200

Evolution, Deck 4, Aft - 2:30 pm
 Don't eat your vegetables... race them in this wild and wacky charge to the finish line. May the best veggie win! (Limited Availability)



FINAL JACKPOT BINGO

Bingo Pre-Sales start at 4:00 pm
Buena Vista Theatre, Deck 4 & 5, Midship - 4:30 pm
 The snowball jackpot MUST BE WON at this final session! Beat the line and get your cards early. Who will be the lucky winner? It could be you! Pre-Sales start 30 minutes prior to game.



OFFICER PIN TRADING

Preludes, Deck 3, Forward - 7:15 pm
 Come trade pins with the Officers of the Disney Dream.



CLUB D DANCE PARTY

Evolution, Deck 4, Aft - 7:30 pm
 Join your Cruise Staff as we turn the lounge into an electrifying family nightclub. Club D, where everyone is a VIP!

DREAM QUEST

D Lounge, Deck 4, Midship - 9:45 pm
 Enjoy the wildest and wackiest scavenger team event on the seven seas!



CLUB NEW YEAR'S EVE

D Lounge, Deck 4, Midship - 10:15 pm
 Club New Year's Eve, you won't want to miss this journey of musical genres in history and performances by some of your favorite Cruise Staff. Bring your family and help us count down to a brand new year!



FAMILY SUPERSTAR KARAOKE

D Lounge, Deck 4, Midship - 10:45 pm
 Join your Cruise Staff in D Lounge tonight and sing along to your favorite song - fun for everyone.



YOUTH ACTIVITIES HIGHLIGHTS

Dine & Play

A convenience for families dining at 8:15 pm, our Youth Activities counselors will be available at 9:15 pm at the entrance of Royal Palace, Enchanted Garden and Animator's Palate dining rooms to bring registered children to join the fun in the Youth Activities areas.



Deck 5, Midship (7-1440)
(3 - 12 years old)

10:30 am - 12:00 am

JEDI TRAINING - EXPERIENCE THE FORCE

11:00 am

Become one with the Force as you take your first step into a larger world. Kids will learn the ways of the Force in this exciting program led by a Jedi.

MICKEY'S PUZZLE PLAYTIME

1:15 pm

Come and play with Mickey & friends as they share their favorite games, puzzles and dances!



Deck 5, Midship (7-1445)
(3 - 12 years old)

9:00 am - 12:00 am

GET THE HOOK

1:15 pm

A villainous villain has stolen Captain Hook's prized golden hook. Become a member of the Top Deck Detective Agency and help solve the clues to retrieve Hook's hook.

STITCH'S FINAL FAREWELL

2:00 pm

We'll get a very special guest as we celebrate the grand finale to this cruise!



Deck 13, Midship (7-9743)
(11 - 14 years old)

10:00 am - 12:00 am

SUPER SLOPPY SCIENCE

11:30 am

Join Professor Make-O-Mess in some of the most extreme experiments you will ever see in the world of Super Sloppy Science!

HOW WELL DO YOU KNOW YOUR COUNSELOR?

7:45 pm

Do you think you know all there is to know about your counselors? Come test out your knowledge with all of your friends!



Entrance on Deck 4, Forward (7-9417)
(14 - 17 years old)

11:00 am - 1:00 am

ZOMBIFIED PREMIERE

10:30 pm

It's premiere night for the latest zombie movie starring YOU!

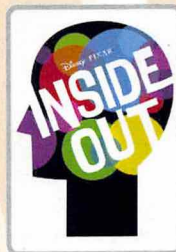
MIX AND MATCH

11:15 pm

Try to find your "perfect match" in Disney's very own "Dating" game.

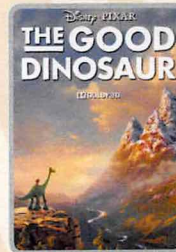
BUENA VISTA THEATRE

Deck 4 & 5, Midship
Today's Movies



FAMILY MOVIE
FUN TIME

8:30 am
Duration:
1 hr 42 mins
Rating: PG

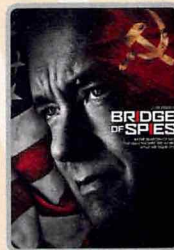


DOLBY 3D

10:45 am
Duration:
1 hr 40 mins
Rating: PG



1:00 pm
Duration:
2 hrs 16 mins
Rating: PG-13



5:30 pm & 8:15 pm
Duration: 2 hrs 15 mins
Rating: PG-13



DOLBY 3D

11:00 pm
Duration: 2 hrs 16 mins
Rating: PG-13

Disney Cruise Line ANYONE CAN COOK (Culinary Series)

FAMILY CULINARY SERIES

From our galley to yours.
Join our chefs as they
show you how to prepare
delicious dishes.

Today's Menu
Apple Strudel

D Lounge,
Deck 4, Midship,
10:30 am



ADULT VARIETY ACT

Repeat Show:

Featuring the Magic &
Illusion of Greg Frewin,
as he entertains you in this
adult exclusive show.

Evolution (18+),
Deck 4, Aft,
10:45 pm

YOUTH ACTIVITIES OPEN HOUSE

Open House is an opportunity for all to come and participate in a variety of exciting activities and free time in the Oceaneer Club, Oceaneer Lab, Edge and Vibe throughout the cruise.

During these times secured programming will still be offered in the other venues for those looking to check their children into care.

Disney's Oceaneer Club: 9:00 am - 10:30 am

Disney's Oceaneer Lab: 4:00 pm - 5:30 pm

Edge: 9:00 am - 10:00 am & 5:30 pm - 7:00 pm

Vibe: 10:00 am - 11:00 am & 7:30 pm - 8:45 pm

MORE TO ENJOY WHILE ONBOARD

SPECIAL DISNEY CRUISE LINE SAVINGS

The Mediterranean. Northern Europe. The Caribbean. Even Alaska! Find out all about special onboard savings on your next Disney Cruise Line vacation! Visit the Disney Vacation Planning Center, Deck 4, Midship.

DISNEY VACATION CLUB® GROUP PREVIEW

Want to learn more about taking magical vacations year after year? Please see a Disney Vacation Club representative on Deck 4, Midship, or call 7-2805 from your stateroom phone for more information about our interactive group presentation.

STAY CONNECTED WITH CELLULAR SERVICE

Cell phone and wireless PDA service is available in Guest staterooms through most plans. Pricing varies depending upon your wireless provider and usually includes International roaming rates.

EXPRESS WALK-OFF

This option allows you to take your luggage off the ship at your leisure once the ship has been cleared by the local authorities. You won't need to wait for your luggage to enter the terminal and there is no need to claim it inside the terminal building. Please note that no assistance with luggage is provided for this option.

MIDSHIP DETECTIVE AGENCY

Use your detective know-how and our special detective "badge" to search the ship and catch your criminal! Deck 2 & 5, Midship Kiosks.

Connect @ Sea

We are now offering a NEW and improved Internet service to stay connected on your cruise like no other in the industry! Internet packages range from \$0.25 per MB - \$89.00 (1000 MB package). For more information contact your Connect@Sea Expert or Guest Services onboard.

FREE ON DEMAND TV

Watch Disney movies, Hollywood features, and even captioned content, plus much more "On Demand" for FREE in the comfort of your stateroom! Bookmark your movie and come back to watch it later. Press MENU on your stateroom television remote control and follow the prompts.



SALON TASTER SPECIAL

Choose from a scalp massage, European facial, hand treatment, sunglow make-over, hair treatment, eye-collagen treatment, foot and ankle massage and neck and shoulder massage.

Three for \$99, five for \$119, and eight for \$139.

Senses Spa & Salon, Deck 11, Forward, Ext. 7-1465

BELLARRI

Discover the beautifully elegant jewelry pieces by BELLARRI.

WHITE CAPS
DECK 3, FORWARD



PROFESSIONAL PORTRAITS TONIGHT!

Grand Staircase - Groups Accommodated

5:15 pm - 6:30 pm
7:15 pm - 8:30 pm

Visit Shutters for everything you need to capture your cruise photo memories. Now is the time to save on cameras and accessories with the best deals of the year! Extra special savings and gifts available with purchase, all at tax and duty free prices.

SHOPPING

BEAUTIFUL JEWELRY DESIGNS BY BELLARRI

Each BELLARRI jewelry design is a delicate art form in which the blending of colors and unique cuts of gemstones must intertwine in harmony. Discover these harmonious designs when you visit White Caps, Deck 3, Forward.

BELLARRI JEWELRY

Head to White Caps on Deck 3, Forward, for the last opportunity on this sailing to discover the colorful jewelry collections from BELLARRI, each piece designed as its own work of art and to be given its own unique interpretation by the individual who wears it.

CELEBRATE WITH THE BIBBIDI BOBBIDI BOUTIQUE!

There's always a reason to celebrate when sailing onboard the Disney Dream Cruise Ship! Join the celebration with the Bibbidi Bobbidi Boutique Celebration package that includes an exclusive Disney Cruise Line t-shirt and matching tutu. Make your reservation by visiting Bibbidi Bobbidi Boutique, Deck 5, Midship or dialing extension 7-9438. Limited space available.

BELLARRI GUESS THE GEMSTONE

Guess correctly for the chance to win a BELLARRI loose stone. Head to White Caps where the winners will be announced tonight at 7:30 pm. Must be present to win. Deck 3, Forward.

CAPTAIN'S SIGNING

Come to White Caps at 12:15 pm and 7:15 pm to have your Disney Dream merchandise signed by the Master of the Disney Dream, Captain Guus. Stunning replica ships are available in Sea Treasures, Deck 3, Forward. Beautiful Disney Cruise Line® prints are available in the Vista Gallery, Deck 4, Midship.

OFFICER PIN TRADING

Check out the Disney Cruise Line pins when you visit Mickey's Mainsail. Later, join the Officers of the Disney Dream Cruise Ship for pin trading fun at 7:15 pm in Preludes. Deck 3, Forward.

STAR WARS MERCHANDISE

No need to travel to a galaxy far, far away to gear up on all things Star Wars! From graphic tees for the whole family to stylish Dooney & Bourke handbags with a unique Star Wars themed pattern, head to the onboard shops where you'll find an array of commemorative Star Wars merchandise. Deck 3, Forward.

IMPORTANT INFORMATION

Security Notice

All Guests (including children) who wish to disembark the ship are required to present their Key to the World card at the gangway. A photo ID is also required for those Guests who are 18 years of age or older. Guests under the age of 18 are required to have a parent, guardian or other responsible adult sign an authorization form at the Guest Service Desk if they wish to go ashore unaccompanied or with any adult from another stateroom.

Inclement Weather

For the safety of all Guests, outdoor events may be changed due to unforeseen weather conditions.

Cold and Flu Reminder

Please wash hands frequently and thoroughly; particularly before meals. Contact the Health Center by dialing 7-1923, should anyone in your party become ill.

Corridor Quiet Hours

As a courtesy to all our Guests, please recognize quiet hallway hours from 10:00 pm - 8:00 am.

Sunscreen/Insect Repellent Advisory

Use sunscreen first and protect against mosquito bites and related illnesses by applying insect repellent on top of sunscreen when going ashore. Insect repellent is available for purchase in White Caps.

Environmental Message

With Disney's commitment to the environment, please refrain from throwing anything over the ship's side. Thank you!

No Reserved Seats Policy

As a courtesy to all our Guests, we kindly advise that the saving of seats is not permitted in the Walt Disney Theatre, and the saving of the sun loungers is not permitted on Deck 11, 12 and 13. Items left unattended will be returned to lost and found at Guest Services, Deck 3, Midship.

Smoking

For the comfort of our guests the following areas are designated as Smoking areas:

- Deck 13, Forward, port side, by "Currents"
- Deck 12, Aft, port side outdoor area that is accessible through the Meridian Lounge
- Deck 4, Aft, port side, the outside Promenade Deck from 6:00 pm to 6:00 am only (all of Deck 4 is no smoking from 6:00 am to 6:00 pm).
- Smoking is prohibited inside all Guest staterooms and on stateroom verandahs. Guests found smoking in their staterooms or on their verandahs will be charged a \$250 stateroom recovery fee. Electronic cigarettes may only be used in designated smoking areas.








Walt Disney Theatre

Theatrical performances may use artificial fog, strobe lights, pyrotechnics and other special effects. For the safety of our performers and the comfort of those around you, the use of any photography, video recording devices or any electronic equipment is prohibited.

Verandah Safety

Please do not leave any combustible materials on your balcony when not present in your stateroom for safety reasons.

Morning	8:30	8:45	9:00	9:15	9:30	9:45	10:00	10:15	10:30	10:45	11:00	11:15	11:30	11:45	12:00	12:15	12:30	12:45	1:00	1:15	1:30	
FUNNEL VISION			Lady and the Tramp (G) Funnel Vision						The Princess and the Frog (G) Funnel Vision						Movie Challenge Poolside Deck 11 Stage							
BUENA VISTA THEATRE	Family Movie Fun Time: Inside Out (PG) Duration: 1 Hour 42 Minutes							The Good Dinosaur (PG) DOLBY 3D Duration: 1 Hour 40 Minutes							Star Wars: The Force Awakens (PG-13) Duration: 2 Hours 16 Minutes							
CHARACTERS			Donald Preludes		Mickey Preludes							Character Dance Party Lobby Atrium										
FUN FOR ALL AGES			Dopey Deck 4, Balcony				Stitch Preludes		Woody Lobby Atrium (V)							Captain's Signing White Caps						
			Morning Walk Deck 4, Portside		Family Crafts D Lounge						Bingo Pre-Sales Evolution		\$10,000 Mega Jackpot BINGO Evolution				JACK-JACK'S DIAPER DASH Lobby Atrium					
ADULTS	Friends of Bill W. Outlook		Art of The Theme Show Tour Meridian					Crafts: Tile Coasters Pub 687				ESPN Dream Team Draft Day - Baseball Pub 687				D Lounge - Group Preview		Movie Quotes Trivia Pub 687				
			Group Cycling Senses Fitness Center		Introduction to Acupuncture Senses Fitness Center							How to Increase Your Metabolism District Lounge				Cruise Staff Lunch Royal Palace		Stem to Stem Wine Tasting (21+) Pink: Wine and Champagne Bar				
VIBE 14-17 YEARS OLD							Youth Activities Open House				Wii Challenge		Zombified				Craft Corner					
EDGE 11-14 YEARS OLD					Youth Activities Open House				Wii Challenge		Bingo		Super Sloppy Science				Ice Cream Social				Craft Corner	
OCEANEER LAB 3-12 YEARS OLD					Playmation				Sports Deck Fun												Get the Hook	
OCEANEER CLUB 3-12 YEARS OLD							Super Sloppy Science						Stitch's Adventure Squad				Lunch				Mickey's Puzzle Playtime	
	Youth Activities Open House										Jedi Training - Experience the Force		Disney Infinity Challenge									
			Disney Racers				Little Einstein's Adventure															

Afternoon	1:45	2:00	2:15	2:30	2:45	3:00	3:15	3:30	3:45	4:00	4:15	4:30	4:45	5:00	5:15	5:30	5:45	6:00	6:15	6:30	6:45	
FUNNEL VISION						Frozen (PG) Funnel Vision								Tangled (PG) Funnel Vision								
BUENA VISTA THEATRE	Star Wars: The Force Awakens (PG-13) Duration: 2 Hours 16 Minutes (Movie Starts at 1:00 pm)										Bridge of Spies (PG-13) Duration: 2 Hours 15 Minutes											
CHARACTERS			Cinderella Lobby Atrium (P)		Belle Lobby Atrium (P)				Donald Deck 4, Balcony		Daisy Deck 4, Balcony		Mickey Mouse Deck 4, Balcony									
			Rapunzel Deck 4, Balcony		Snow White Deck 4, Balcony				Chip & Dale Lobby Atrium (V)		Goofy Lobby Atrium (V)		Pluto Lobby Atrium (V)									
FUN FOR ALL AGES							Walt Disney Theatre		Bingo Pre Sales		Final Jackpot 		Live Music with EnharmoniQ Lobby Atrium		 Walt Disney Theatre							
ADULTS			90's Music Trivia Pub 687				Yoga Class Senses Fitness Center				Ultimate Disney Trivia Pub 687											
	Martini Tasting (21+) Meridian				D Lounge - Lobster Ravioli				D Lounge - Group Preview		Cruisin' Solo Gathering Cove Cafe											
VIBE 14-17 YEARS OLD	Craft Corner		Sun Deck Fun					Anyone Can Cook: Cupcakes		Teen Choice				That's Hilarious		Gender Wars		Karaoke				
EDGE 11-14 YEARS OLD	Craft Corner	Sports Deck Fun			Tween Choice			Chillin' in Edge		Game Challenge		Tween Choice		Youth Activities Open House 🎮								
OCEANEER LAB 3-12 YEARS OLD	Stitch's Final Farewell 🌿			Disney Animation: Creating a Character					Youth Activities Open House 🎮						Dinner		Magic PlayFloor 🌿			Playmation		
									Anyone Can Cook 🎮													
	Magic PlayFloor 🌿			Disney Infinity Challenge					Journey to Neverland 🌿				Star Wars Galaxy Designers							Disney Infinity Draw the Characters		
OCEANEER CLUB 3-12 YEARS OLD																						

Evening	7:00	7:15	7:30	7:45	8:00	8:15	8:30	8:45	9:00	9:15	9:30	9:45	10:00	10:15	10:30	10:45	11:00	11:15	11:30	11:45	12:00	
FUNNEL VISION	Toy Story 3 (G) Funnel Vision							Ratatouille (G) Funnel Vision							Remember the Titans (PG) Funnel Vision							
BUENA VISTA THEATRE	Bridge of Spies (PG-13) Duration: 2 Hours 15 Minutes					Bridge of Spies (PG-13) Duration: 2 Hours 15 Minutes										Star Wars: The Force Awakens (PG-13) Duration: 2 Hours 16 Minutes						
CHARACTERS				Mickey Mouse Deck 4, Balcony																		
				Minnie Mouse Lobby Atrium (V)																		
FUN FOR ALL AGES		Pin Trading Preludes						Disney's Believe Walt Disney Theatre				Dream Quest D Lounge										
		Captain's Signing White Caps																				
ADULTS				70's Music Trivia Pub 687				NCAA Basketball: Pittsburgh vs. Louisville Pub 687 (Subject to Satellite Availability)				1820 Society: Farewell Evolution										
				Live Violin with Olga Pink Wine and Champagne Bar								Live Music with The Get Ups District Lounge										
VIBE 14-17 YEARS OLD	Karaoke			Youth Activities Open House							Flubber					Zombified Premiere			Mix and Match			
EDGE 11-14 YEARS OLD	Cards Tournament			How Well Do You Know Your Counselor?				Game Challenge				That's Hilarious				Bring It!			Gender Wars		Final Farewell	
OCEANEER LAB 3-12 YEARS OLD	Playmation	Anyone Can Cook					Monster's Inc: Open "Mike" Night				Super Sloppy Science			Video Game Challenge		Dance Party			GAGA Ball			
	Create a Postcard																					
OCEANEER CLUB 3-12 YEARS OLD				Star Wars Saga - Tales from a Galaxy Far Far Away				Parachute Games											Magic PlayFloor		Dance Party	
								Craft Corner														

Symbol for activities that will be repeated during the cruise



FOLD

Fold along the dotted lines and take me with you so you don't miss any of the fun!

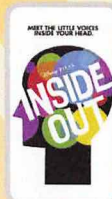
FOLD

IN THE SPOTLIGHT SERIES
SOLVE IT! SERIES
CLUB UP! SERIES
CREATE & INVENT SERIES
OPEN HOUSE
CLUBHOUSE SERIES
STORYBOOK SERIES

THURSDAY, JANUARY 14, 2016 - DAY AT SEA

BUENA VISTA THEATRE

Deck 4 & 5, Midship



FAMILY MOVIE
FUN TIME

8:30 am
Duration:
1 hr 42 mins
Rating: PG



DOLBY 3D

10:45 am
Duration:
1 hr 40 mins
Rating: PG



DOLBY 3D

1:00 pm
Duration:
2 hrs 16 mins
Rating: PG-13



DOLBY 3D

5:30 pm & 8:15 pm
Duration:
2 hrs 15 mins
Rating: PG-13



DOLBY 3D

11:00 pm
Duration:
2 hrs 16 mins
Rating: PG-13

Character Appearances

DOPEY

Deck 4, Balcony - 9:00 am

WOODY

Lobby Atrium (V)
9:15 am & 10:30 am

DONALD DUCK

Preludes - 9:15 am
Deck 4, Balcony - 4:15 pm

MICKEY MOUSE

Preludes - 9:45 am
Deck 4, Balcony
5:15 pm & 7:30 pm

STITCH

Preludes - 10:15 am

CHARACTER DANCE PARTY

Lobby Atrium - 12:15 pm

Rapunzel

Deck 4, Balcony - 2:30 pm

Cinderella

Lobby Atrium (P) - 2:30 pm

Snow White

Deck 4, Balcony - 3:15 pm

Belle

Lobby Atrium (P) - 3:15 pm

CHIP & DALE

Lobby Atrium (V) - 4:30 pm

DAISY DUCK

Deck 4, Balcony - 4:45 pm

GOOFY

Lobby Atrium (V) - 5:00 pm

PLUTO

Lobby Atrium (V) - 5:30 pm

MINNIE MOUSE

Lobby Atrium (V) - 7:30 pm

PRINCESS APPEARANCES

D Lounge - 7:30 pm

SEA YA REAL SOON

Lobby Atrium - 10:15 pm



(H) Hallway - (S) Starboard Side - (P) Port Side - (V) Vestibule

For details of daily Disney character appearances, refer to the character line on your Navigator Grid, or the digital character board in the Lobby Atrium.

YOUTH ACTIVITIES THEMED EXPERIENCES

CLUBHOUSE SERIES

focuses on movement and features content which appeals to younger children.

STORYBOOK SERIES

is designed with a strong connection to the Disney classic stories.

JUMP UP! SERIES

includes large group games & movement-oriented activities.

CREATE & INVENT SERIES

will have a tactile focus allowing children to create and admire their work.

OPEN HOUSE

activities for families, adults and children of all ages to enjoy together.

IN THE SPOTLIGHT SERIES

focuses on children's stage presence with lots of activities and enthusiasm.

SOLVE IT! SERIES

are less active, but will challenge children with problem/solutions-based activities.

SHIP DIRECTORY

YOUTH ACTIVITIES

DISNEY'S OCEANEER CLUB	DECK 5, MID	10:30 AM - 12:00 PM
DISNEY'S OCEANEER LAB	DECK 5, MID	9:00 AM - 12:00 PM
EDGE	DECK 13, MID	10:00 AM - 12:00 PM
VIBE	DECK 4, FWD	11:00 AM - 1:00 PM
IT'S A SMALL WORLD NURSERY	DECK 5, MID	9:00 AM - 12:00 PM

POOLS & MORE

* Children under 12 must have adult supervision in pool areas.

AQUADUCK	DECK 12, AFT	9:00 AM - 10:00 PM
DONALD'S POOL	DECK 11, MID	9:00 AM - 6:00 PM 8:00 PM - 10:00 PM
FUNNEL PUDDLE	DECK 12, FWD	8:00 AM - 6:00 PM
MICKEY'S POOL	DECK 11, MID	8:30 AM - 10:00 PM
MICKEY'S SLIDE	DECK 11, MID	9:00 AM - 6:00 PM
NEMO'S REEF	DECK 11, MID	9:00 AM - 6:00 PM
QUIET COVE POOL (18+)	DECK 11, FWD	8:00 AM - 10:00 PM
SATELLITE FALLS (18+)	DECK 13, FWD	8:00 AM - 8:00 PM

Complimentary pool vests are available for children to use in the pools onboard.

RECREATION

GOLF/SPORTS SIMULATOR	DECK 13, AFT	9:00 AM - 6:00 PM
GOOFY GOLF	DECK 13, AFT	8:00 AM - 10:00 PM
GOOFY'S SPORTS DECK	DECK 13, AFT	12:00 AM - 10:00 AM 1:00 PM - 6:00 PM
MIDSHIP DETECTIVE AGENCY	DECK 2 & 5, MID	8:00 AM - 11:00 PM
PORT ADVENTURES DESK	DECK 5, MID	
SENSES FITNESS CENTER (18+)	DECK 11, FWD	6:00 AM - 10:00 PM

GENERAL INFORMATION

BUENA VISTA THEATRE	DECK 4 & 5, MID	SHOWTIMES
DISNEY VACATION PLANNING CENTER	DECK 4, MID	9:00 AM - 12:00 PM 2:00 PM - 10:00 PM
GUEST SERVICES	DECK 3, MID	24 HOURS
HAIRBRAIDING	DECK 11, MID	8:00 AM - 9:30 PM
MEDICAL HEALTH CENTER	DECK 1, FWD	9:30 AM - 11:00 AM 4:30 PM - 7:00 PM
PORT & SHOPPING DESK	DECK 4, MID	
PRELUDES	DECK 3, FWD	5:30 PM - 9:00 PM
runDisney HELP DESK	DECK 4, MID	10:00 AM - 12:00 PM
SENSES SPA AND SALON	DECK 11, FWD	8:00 AM - 10:00 PM
SHUTTERS PHOTO GALLERY	DECK 4, MID	10:00 AM - 11:30 PM
WALT DISNEY THEATRE	DECK 3 & 4, FWD	SHOWTIMES

SHOPPING

BIBBIDI BOBBIDI BOUTIQUE	DECK 5, MID	9:00 AM - 9:00 PM
MICKEY'S MAINSAIL	DECK 3, FWD	9:30 AM - 11:00 PM
SEA TREASURES	DECK 3, FWD	9:30 AM - 11:00 PM
QUACKS	DECK 11, MID	
VISTA GALLERY	DECK 4, MID	9:30 AM - 11:00 PM
WHITE CAPS	DECK 3, FWD	9:30 AM - 11:00 PM
WHOZITS & WHATZITS	DECK 11, MID	10:00 AM - 4:00 PM 7:00 PM - 11:00 PM

IMPORTANT NUMBERS

Fire/Security: 7-3001
Medical Emergency: 7-3000
Health Center: 7-1923

DINNER MENU
 Animator's Palate: Pacific Rim Cuisine
 Enchanted Garden: Continental Market Cuisine
 Royal Palace: French Dinner
 Dining Times: 5:45 pm & 8:15 pm

DRINK OF THE DAY
 High Tide (Alcoholic)
 Princess Delight (Non Alcoholic)

WEATHER FORECAST
 Today: Partly Cloudy
 High: 68°F/20°C
 Tomorrow: Partly Cloudy
 High: 66°F/19°C

Evening Attire: Cruise Casual

DINING & LOUNGES

BREAKFAST

CABANAS CONTINENTAL	DECK 11, AFT	7:00 AM - 7:30 AM
CABANAS	DECK 11, AFT	7:30 AM - 10:45 AM
ENCHANTED GARDEN	DECK 2, MID	9:00 AM - 12:00 PM
ROYAL PALACE	DECK 3, MID	8:00 AM - 9:30 AM

LUNCH

CABANAS	DECK 11, AFT	11:45 AM - 2:15 PM
FILLMORE'S FAVORITES	DECK 11, MID	10:30 AM - 6:00 PM
LUIGI'S PIZZA	DECK 11, MID	10:30 AM - 6:00 PM
ROYAL PALACE	DECK 3, MID	12:00 PM - 1:30 PM
TOW MATER'S GRILL	DECK 11, MID	10:30 AM - 6:00 PM

DINNER

ANIMATOR'S PALATE	DECK 3, AFT	5:45 PM & 8:15 PM
ENCHANTED GARDEN	DECK 2, MID	5:45 PM & 8:15 PM
PALO (18+) (RESERVATIONS REQ. & NOM. FEE APPLIES)	DECK 12, AFT	6:00 PM - 8:30 PM
REMY (18+) (RESERVATIONS REQ. & NOM. FEE APPLIES)	DECK 12, AFT	6:00 PM - 8:30 PM
ROYAL PALACE	DECK 3, MID	5:45 PM & 8:15 PM
TOW MATER'S GRILL	DECK 11, MID	6:00 PM - 11:00 PM

LATE NIGHT SNACKS

LUIGI'S PIZZA	DECK 11, MID	9:30 PM - 12:00 AM
---------------	--------------	--------------------

ADDED FEATURES

BEVERAGE STATION	DECK 11, MID	24 HOURS
EYE SCREAM	DECK 11, MID	10:30 AM - 12:00 AM
ROOM SERVICE	DIAL 0	CLOSES AT 1:30 AM
VANELLOPE'S SWEETS AND TREATS	DECK 11, AFT	12:00 PM - 10:30 PM

ENTERTAINMENT - LOUNGES - BARS

Adults must be 21 and older to consume alcoholic beverages.

BON VOYAGE	DECK 3, MID	9:00 AM - 11:00 PM
COVE BAR (18+)	DECK 11, FWD	10:00 AM - 10:30 PM
COVE CAFE (18+)	DECK 11, FWD	7:00 AM - 12:00 AM
CURRENTS (18+)	DECK 13, FWD	10:00 AM - 11:00 PM
D LOUNGE	DECK 4, MID	SHOWTIMES
DISTRICT LOUNGE (18+ AFTER 9:00 PM)	DECK 4, AFT	12:00 PM - 2:00 AM
EVOLUTION (18+)	DECK 4, AFT	9:30 PM - 12:00 AM
FROZONE TREATS	DECK 11, MID	10:00 AM - 6:00 PM
MERIDIAN (18+)	DECK 12, AFT	5:00 PM - 12:00 AM
OUTLOOK (18+)	DECK 14, MID	
PINK: WINE AND CHAMPAGNE BAR (18+)	DECK 4, AFT	5:00 PM - 12:00 AM
PUB 687 (18+ AFTER 9:00 PM)	DECK 4, AFT	12:00 PM - 12:00 AM
SENSES JUICE BAR	DECK 11, FWD	6:00 AM - 10:00 PM
SKYLINE (18+)	DECK 4, AFT	5:00 PM - 12:00 AM
VISTA CAFE	DECK 4, MID	7:00 AM - 11:00 PM
WAVES	DECK 12, AFT	10:00 AM - 6:00 PM

Public Health Advisory: Consuming raw or under-cooked meats, poultry, seafood, shellfish, or eggs may increase your risk for food borne illness, especially if you have certain medical condition.



CHARACTER DANCE PARTY

Put your dancing shoes on and join some of your favorite Disney Friends in the Lobby Atrium, Deck 3, Midship for fun and dancing.
12:15 pm