

PERSONAL NAVIGATOR



Sunrise: 6:25 am Sunset: 5:29 pm
Evening Attire: Optional Dress Up

Today: Sunny High: 80°F/27°C
Tomorrow: Partly Sunny High: 78°F/26°C

THURSDAY, NOVEMBER 5, 2015

DAY AT SEA

Disney's Believe

Genie from Aladdin and many of Disney's most beloved magic makers take a father on a magical journey to show him that anything is possible if you just believe.

WALT DISNEY THEATRE
DECK 3 & 4, FORWARD

6:15 pm & 8:30 pm

As a courtesy to all Guests, we kindly advise that the saving of seats is **not** permitted in the Walt Disney Theatre.

Assistance available at the entrance to the Walt Disney Theatre 30 minutes prior to show time.



Disney DREAM Fun Facts

Tonnage: 129,690

Height: 66.13 m (217 feet)

Length: 339.8 m (1114.7 feet)

Important Dates

Name Announcement: *March 2009*

Steel Cutting: *March 2009*

Keel Laying: *August 2009*

Delivery: *December 2010*

Did you know?

The Sorcerer Mickey Mouse on the Disney Dream's stern is about 14 feet long. Constructed of stainless steel and fiberglass, it weighs approximately 2,500 pounds.



Debark Talk Broadcast

Important information regarding disembarkation procedures for your journey home will be covered in this debarkation briefing. The broadcast will be shown continuously on channel 5 of your stateroom television for your convenience. Please place your luggage outside your stateroom between 8:30 - 10:30 pm.

Thank you in advance for completing your comment card.

SEA YA' REAL SOON!



Mickey and Minnie along with the rest of the Walt Disney Characters invite you to join them in the ship's atrium for Sea Ya Real Soon. You won't want to miss this very special farewell presentation.

Lobby Atrium,
Deck 3, Midship,
10:15 pm

Don't Miss:

Making of the Dream

Evolution, Deck 4, Aft - 9:45 am

Explore the origins of Disney Cruise Line and the latest and greatest innovations conjured especially for the Disney Dream in this fascinating and entertaining behind-the-scenes program.

Anyone Can Cook - Apple Strudel

D Lounge, Deck 4, Midship - 10:30 am

From our galley to yours. Join our chefs as they show you how to prepare delicious dishes. Today's Menu - Apple Strudel.

Jack-Jack's Incredible Diaper Dash

Lobby Atrium, Deck 3, Midship - 11:30 am

Calling all baby cruisers! It's time to take to the mat to see who's the fastest crawler of the seven seas! Register your baby 15 minutes prior to the big race.

Variety Show: Mike Super (18+)

Evolution, Deck 4, Aft - 10:45 pm

Featuring the Magic and Illusions of Mike Super, in this Adult exclusive cabaret style show.



Book Your Next Disney Vacation Today!

If you're thinking about booking a future Disney vacation, today is your last chance to save with special offers only available onboard! The last day of the cruise tends to get busy in the evening, so don't miss this opportunity to plan your next Disney vacation. Visit the Disney Vacation Planning Center, Deck 4, Midship, for more information.

DINNER MENU

Animator's Palate: Pacific Rim Crusine
Enchanted Garden: Continental Market
Royal Palace: French Dinner

DRINK OF THE DAY

High Tide (Alcoholic)
Princess Delight (Non Alcoholic)

IMPORTANT NUMBERS

Fire/Security: 7-3001
Medical Emergency: 7-3000
Health Center: 7-1923

ADULT ACTIVITY HIGHLIGHTS

SENSES SPA FITNESS CLASSES & SEMINARS



Wake Up & Stretch Class - Senses Fitness Center - 7:00 am
Fab Abs - Senses Fitness Center - 7:30 am
Body Sculpt Boot Camp (Nom. Fee) - Senses Fitness Center - 8:00 am
Group Cycling (Sign-Up Required) - Senses Fitness Center - 9:30 am
Introduction to Acupuncture - Senses Fitness Center - 9:30 am
Acupuncture Pain Relief - Senses Fitness Center - 10:15 am
Detox for Health & Weight Loss - District Lounge - 11:00 am
Good Feet: Relieving Back Pain - Senses Fitness Center - 2:00 pm
Yoga - Senses Fitness Center - 4:00 pm

TASTING CLASSES

Martini Tasting (21+) - Meridian - 2:00 pm & 4:00 pm
Mixology (21+) - Skyline - 2:00 pm & 4:00 pm
Mojito & Caipirinha Tasting (21+) - District Lounge - 3:00 pm
 Please make reservations for tastings at Guest Services for a nominal fee. Tasting Seminars are only for Guests 21 and older.

1820 SOCIETY: LUNCH

Royal Palace, Deck 3, Midship - 12:30 pm
 Get to know your fellow Society members over lunch.



1820 SOCIETY: GAME CHALLENGE

Pub 687, Deck 4, Aft - 4:30 pm
 Join us and play some of your favorite board games.

1820 SOCIETY: FAREWELL

Evolution, Deck 4, Aft - 9:45 pm
 Join your Cruise Staff and your new friends in this last gathering for some fun.



ESPN DREAM TEAM DRAFT DAY - BASEBALL

Pub 687, Deck 4, Aft - 11:00 am
 Play ball! Join the "Commissioner" and engage in this interactive fantasy baseball draft unlike anything you've ever seen! Can YOU draft the greatest baseball team of all-time?



ANYONE CAN COOK - LOBSTER RAVIOLI

D Lounge, Deck 4, Midship - 3:00 pm
 From our galley to yours. Join our chefs as they show you how to prepare delicious dishes. Today's Menu - Lobster Ravioli



80'S MUSIC CHALLENGE

Evolution, Deck 4, Aft - 10:15 pm
 "Moon Walk" back to the 80's as we put your musical knowledge of the decade to the test.



FUN FOR ALL AGES HIGHLIGHTS

\$10,000 MEGA JACKPOT BINGO

Bingo Pre-Sales start at 11:00 am
Evolution, Deck 4, Aft - 11:15 am
 It's Big, it's Massive, it's Supersized! It's \$10,000 MEGA Jackpot Bingo! Take home \$10,000 if you can cover your card in 46 numbers or less. If not, we carry on to play for the biggest cash prize of the session, plus today's Disney Vacation Club sponsored raffle includes a \$100 Onboard Credit and prize-packs. Pre-Sales start 15 minutes prior to game.



JACK-JACK'S INCREDIBLE DIAPER DASH

Lobby Atrium, Deck 3, Midship - 11:30 am
 Calling all baby cruisers! It's time to take to the mat to see who's the fastest crawler of the seven seas! Register your baby 15 minutes prior to the big race.



DISNEY VACATION CLUB GROUP PREVIEW

D Lounge, Deck 4, Midship - 12:15 pm
 Want to learn more about taking magical vacations year after year? Please see a Disney Vacation Club representative on Deck 4, Midship, or call 7-2805 from your stateroom phone for more information about our interactive group presentation.



DISNEY ANIMATION: CREATING A CHARACTER

D Lounge, Deck 4, Midship - 1:15 pm
 Go behind the scenes at Walt Disney Animation Studios as Walt Disney himself talks about his most famous characters, then learn the basic techniques of drawing your favorite pals in this fun and interesting enrichment program.



JEDI TRAINING - TRIALS OF THE TEMPLE

Walt Disney Theatre, Deck 3 Forward - 1:15 pm
 Ancient records tell of a hidden temple that will test those who choose to open it. Watch as a Jedi teaches Force Sensitive children how to use a light saber and battle the Dark Side.



MICKEY 200

Evolution, Deck 4, Aft - 2:30 pm
 Don't eat your vegetables... race them in this wild and wacky charge to the finish line. May the best veggie win! (Limited Availability)



FINAL JACKPOT BINGO

Bingo Pre-Sales start at 3:45 pm
D Lounge, Deck 4, Midship - 4:15 pm
 The snowball jackpot MUST BE WON at this final session! Beat the line and get your cards early. Who will be the lucky winner? It could be you! Pre-Sales start 30 minutes prior to game.



OFFICER PIN TRADING

Preludes, Deck 3, Forward - 7:15 pm
 Come trade pins with the Officers of the Disney Dream.



CLUB NEW YEAR'S EVE

Evolution, Deck 4, Aft - 7:30 pm
 Club New Year's Eve, you won't want to miss this journey of musical genres in history and performances by some of your favorite Cruise Staff. Bring your family and help us count down to a brand new year!

DISNEY TRIVIA

D Lounge, Deck 4, Midship - 7:30 pm
 Navigate your way through a round of questions to test how much you really know about Disney.

DREAM QUEST

D Lounge, Deck 4, Midship - 10:15 pm
 Enjoy the wildest and wackiest scavenger team event on the seven seas!



FAMILY SUPERSTAR KARAOKE

D Lounge, Deck 4, Midship - 10:45 pm
 Join your Cruise Staff in D Lounge tonight and sing along to your favorite song - fun for everyone.

YOUTH ACTIVITIES HIGHLIGHTS

Dine & Play

A convenience for families dining at 8:15 pm, our Youth Activities counselors will be available at 9:15 pm at the entrance of Royal Palace, Enchanted Garden and Animator's Palate dining rooms to bring registered children to join the fun in the Youth Activities areas.



Deck 5, Midship (7-1440)
(3 - 12 years old)

10:30 am - 12:00 am

JEDI TRAINING - EXPERIENCE THE FORCE

11:00 am

Become one with the Force as you take your first step into a larger world. Kids will learn the ways of the Force in this exciting program led by a Jedi.

MICKEY'S PUZZLE PLAYTIME

1:15 pm

Come and play with Mickey & friends as they share their favorite games, puzzles and dances!



Deck 5, Midship (7-1445)
(3 - 12 years old)

9:00 am - 12:00 am

PLAYMATION

9:15 am

The Avengers Need You: The battle begins October 4, but recruits can reserve their gear onboard today!

SPORTS DECK FUN

10:00 am

Take over the Sports Deck with some fun and friendly competition.



Deck 13, Midship (7-9743)
(11 - 14 years old)

10:00 am - 12:00 am

SUPER SLOPPY SCIENCE

11:30 am

Join Professor Make-O-Mess in some of the most extreme experiments you will ever see in the world of Super Sloppy Science!

THAT'S HILARIOUS

10:15 pm

Ever wanted to show off your comedy skills? Then be a part of the cast for the crazy improv show "That's Hilarious" and put on a live show for your friends.



Entrance on Deck 4, Forward (7-9417)
(14 - 17 years old)

11:00 am - 1:00 am

ZOMBIFIED

12:15 pm

A big movie producer is looking for zombies to help him film the finale to his latest masterpiece, Zombified.

HOMECOMING

12:00 am

Come and join your fellow teens in our very own version of "Homecoming", and dance the night away.

BUENA VISTA THEATRE

Deck 4 & 5, Midship
Today's Movies

Preview

DOLBY 3D



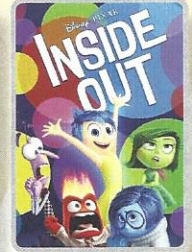
8:30 am & 2:30 pm

Duration: 2 hrs 15 mins
Rating: PG-13



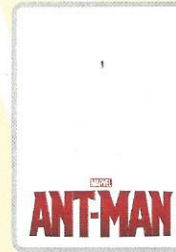
11:30 am & 8:00 pm

Duration: 12 mins
Rating: G



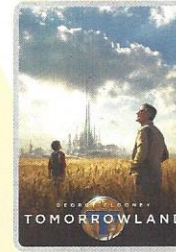
12:00 pm

Duration: 1 hr 42 mins
Rating: PG



5:30 pm & 8:30 pm

Duration: 1 hr 57 mins
Rating: PG-13



11:15 pm

Duration: 2 hrs 10 mins
Rating: PG



FAMILY CULINARY SERIES

From our galley to yours. Join our chefs as they show you how to prepare delicious dishes.

Today's Menu
Apple Strudel

D Lounge,
Deck 4, Midship,
10:30 am



ADULT VARIETY ACT

Repeat Show:
Featuring the
Magic and Illusion
of Mike Super,
as he entertains you in this
adult exclusive show.

Evolution (18+),
Deck 4, Aft,
10:45 pm

YOUTH ACTIVITIES OPEN HOUSE

Open House is an opportunity for all to come and participate in a variety of exciting activities and free time in the Oceaneer Club, Oceaneer Lab, Edge and Vibe throughout the cruise.

During these times secured programming will still be offered in the other venues for those looking to check their children into care.

Disney's Oceaneer Club: 9:00 am - 10:30 am

Disney's Oceaneer Lab: 4:00 pm - 5:30 pm

Edge: 9:00 am - 10:00 am & 5:30 pm - 7:00 pm

Vibe: 10:00 am - 11:00 am & 7:30 pm - 8:45 pm

MORE TO ENJOY WHILE ONBOARD

SPECIAL DISNEY CRUISE LINE SAVINGS

The Mediterranean. Northern Europe. The Caribbean. Even Alaska! Find out all about special onboard savings on your next Disney Cruise Line vacation! Visit the Disney Vacation Planning Center, Deck 4, Midship.



DISNEY VACATION CLUB® GROUP PREVIEW

Want to learn more about taking magical vacations year after year? Please see a Disney Vacation Club representative on Deck 4, Midship, or call 7-2805 from your stateroom phone for more information about our interactive group presentation.



STAY CONNECTED WITH CELLULAR SERVICE

Cell phone and wireless PDA service is available in Guest staterooms through most plans. Pricing varies depending upon your wireless provider and usually includes International roaming rates.

EXPRESS WALK-OFF

This option allows you to take your luggage off the ship at your leisure once the ship has been cleared by the local authorities. You won't need to wait for your luggage to enter the terminal and there is no need to claim it inside the terminal building. Please note that no assistance with luggage is provided for this option.

MIDSHIP DETECTIVE AGENCY

Use your detective know-how and our special detective "badge" to search the ship and catch your criminal! Deck 2 & 5, Midship Kiosks.

Connect@Sea

We are now offering a NEW and improved Internet service to stay connected on your cruise like no other in the industry! Internet packages range from \$0.25 per MB - \$89.00 (1000 MB package). For more information contact your Connect@Sea Expert or Guest Services onboard.

FREE ON DEMAND TV

Watch Disney movies, Hollywood features, and even captioned content, plus much more "On Demand" for FREE in the comfort of your stateroom! Bookmark your movie and come back to watch it later. Press MENU on your stateroom television remote control and follow the prompts.

SHOPPING

EXCLUSIVE STAR WARS THEMED MERCHANDISE

The Force is strong on the Disney Dream Cruise Ship! Choose your alliance and gear up with fun new Star Wars merchandise designed exclusively for Disney Cruise Line. White Caps, Deck 3, Forward.

SOPHIA FIORI LAST OPPORTUNITY

Drop in to White Caps for your last chance to get your hands on our fantastic collection of Sophia Fiori Couture diamond jewelry! Don't miss out on these exquisite diamonds. Deck 3, Forward.

CELEBRATE WITH THE BIBBIDI BOBBIDI BOUTIQUE!

There's always a reason to celebrate when sailing onboard the Disney Dream Cruise Ship! Join the celebration with the Bibbidi Bobbidi Boutique Celebration package that includes an exclusive Disney Cruise Line t-shirt and matching tutu. Make your reservation by visiting Bibbidi Bobbidi Boutique, Deck 5, Midship or dialing extension 7-9438. Limited space available.

THE DISNEY PARKS COLLECTION BY PANDORA JEWELRY

The Disney Parks Collection by PANDORA Jewelry features hand-finished .925 sterling silver and 14K gold charms inspired by some of Disney's most beloved characters. Visit White Caps on Deck 3, Forward, where you'll find a specially designed sterling silver charm featuring a Disney Cruise Line ship.

CAPTAIN'S SIGNING

Come to White Caps at 12:15 pm to have your Disney Dream merchandise signed by the Master of the Disney Dream, Captain Henry. Stunning replica ships are available in Sea Treasures, Deck 3, Forward. Beautiful Disney Cruise Line® prints are available in the Vista Gallery, Deck 4, Midship.

OFFICER PIN TRADING

Check out the Disney Cruise Line pins when you visit Mickey's Mainsail. Later, join the Officers of the Disney Dream Cruise Ship for pin trading fun at 7:15 pm in Preludes. Deck 3, Forward.

HAVE YOU SEEN MAUI JIM?

See the world the way it was meant to be seen with Maui Jim's polarized, two lens technology eyewear which provides unmatched protection and comfort. White Caps, Deck 3, Forward.



20/20/20

20 minute back, neck and shoulder massage
20 minute scalp massage, and
20 minute foot and ankle massage

60 minutes for \$99

Senses Spa & Salon, Deck 11, Forward, Ext. 7-1465

DISNEY INSPIRED
DIAMOND COLLECTION

by SOPHIA FIORI
DIAMONDS

ONLY AVAILABLE ONBOARD



Shutters

PROFESSIONAL
PORTRAITS TONIGHT!

Grand Staircase - Groups Accommodated

5:15 pm - 6:30 pm
7:15 pm - 8:30 pm

Visit Shutters for everything you need to capture your cruise photo memories. Now is the time to save on cameras and accessories with the best deals of the year! Extra special savings and gifts available with purchase, all at tax and duty free prices.

IMPORTANT INFORMATION

Security Notice

All Guests (including children) who wish to disembark the ship are required to present their Key to the World card at the gangway. A photo ID is also required for those Guests who are 18 years of age or older. Guests under the age of 18 are required to have a parent, guardian or other responsible adult sign an authorization form at the Guest Service Desk if they wish to go ashore unaccompanied or with any adult from another stateroom.

Inclement Weather

For the safety of all Guests, outdoor events may be changed due to unforeseen weather conditions.

Cold and Flu Reminder

Please wash hands frequently and thoroughly, particularly before meals. Contact the Health Center by dialing 7-1923, should anyone in your party become ill.

Corridor Quiet Hours

As a courtesy to all our Guests, please recognize quiet hallway hours from 10:00 pm - 8:00 am.

Sunscreen/Insect Repellent Advisory

Use sunscreen first and protect against mosquito bites and related illnesses by applying insect repellent on top of sunscreen when going ashore. Insect repellent is available for purchase in White Caps.

Environmental Message

With Disney's commitment to the environment, please refrain from throwing anything over the ship's side. Thank you!

No Reserved Seats Policy

As a courtesy to all our Guests, we kindly advise that the saving of seats is not permitted in the Walt Disney Theatre, and the saving of the sun loungers is not permitted on Deck 11, 12 and 13. Items left unattended will be returned to lost and found at Guest Services, Deck 3, Midship.

Smoking

For the comfort of our guests the following areas are designated as Smoking areas:

- Deck 13, Forward, port side, by "Currents"
- Deck 12, Aft, port side outdoor area that is accessible through the Meridian Lounge
- Deck 4, Aft, port side, the outside Promenade Deck from 6:00 pm to 6:00 am only (all of Deck 4 is no smoking from 6:00 am to 6:00 pm).
- Smoking is prohibited inside all Guest staterooms and on stateroom verandahs. Guests found smoking in their staterooms or on their verandahs will be charged a \$250 stateroom recovery fee. Electronic cigarettes may only be used in designated smoking areas.

Walt Disney Theatre

Theatrical performances may use artificial fog, strobe lights, pyrotechnics and other special effects. For the safety of our performers and the comfort of those around you, the use of any photography, video recording devices or any electronic equipment is prohibited.

Verandah Safety

Please do not leave any combustible materials on your balcony when not present in your stateroom for safety reasons.

Morning	8:30	8:45	9:00	9:15	9:30	9:45	10:00	10:15	10:30	10:45	11:00	11:15	11:30	11:45	12:00	12:15	12:30	12:45	1:00	1:15	1:30
FUNNEL VISION	Tangled (PG) Funnel Vision											Star Wars Rebels: Disney Channel XD (G) Funnel Vision									
BUENA VISTA THEATRE	Bridge of Spies (PG-13) Duration: 2 Hours 15 Minutes											The Good Dinosaur Preview (G) Duration: 12 Minutes									
CHARACTERS	Minnie Deck 4, Balcony			Woody Lobby Atrium (V)			Sofia Deck 4, Balcony			Woody Lobby Atrium (V)			Character Dance Party Lobby Atrium			Jedi Training: Trials of the Temple Walt Disney Theatre					
FUN FOR ALL AGES	Disney Junior D Lounge		Morning Walk Deck 4, Portside		Family Crafts D Lounge		Making of the Dream Evolution		Bingo Pre-Sales Evolution		\$10,000 Mega Jackpot BINGO Evolution		Captain's Signing White Caps		Disney Animation Club D Lounge - Group Preview		Disney Animation Creating a Character D Lounge				
ADULTS	Friends of Bill W. Outlook		Art of The Theme Show Tour Meridian				Introduction to Acupuncture Senses Fitness Center		Acupuncture Pain Relief Senses Fitness Center		Crafts: Tile Coasters Pub 687		Dream Team Draft - Baseball Pub 687		1820 Society: Lunch Royal Palace		Cruise Staff Lunch Royal Palace		Movie Quotes Trivia Pub 687		
VIBE 14-17 YEARS OLD	Youth Activities Open House						Wii Challenge			Teen Choice			Zombified								
EDGE 11-14 YEARS OLD	Youth Activities Open House						Wii Challenge			Bingo			Super Sloppy Science			Ice Cream Social					
OCEANEER LAB 3-12 YEARS OLD	Playmation						Sports Deck Fun						Get the Hook								
OCEANEER CLUB 3-12 YEARS OLD	Youth Activities Open House						Super Sloppy Science			Stitch's Adventure Squad			Lunch			Mickey's Puzzle Playtime					
	Disney Racers		Little Einstein's Adventure		Jedi Training: Experience the Force		Disney Infinity Challenge			Lunch			Mickey's Puzzle Playtime								

Afternoon	1:45	2:00	2:15	2:30	2:45	3:00	3:15	3:30	3:45	4:00	4:15	4:30	4:45	5:00	5:15	5:30	5:45	6:00	6:15	6:30	6:45									
FUNNEL VISION	Pixar Short Films (G) Funnel Vision											The Jungle Book (G) Funnel Vision																		
BUENA VISTA THEATRE	Bridge of Spies (PG-13) Duration: 2 Hours 15 Minutes											Ant-Man (PG-13) Duration: 1 Hour 57 Minutes																		
CHARACTERS	Belle Lobby Atrium (P)			Cinderella Lobby Atrium (P)			Donald Deck 4, Balcony			Daisy Deck 4, Balcony			Mickey Mouse Deck 4, Balcony			Rapunzel Deck 4, Balcony			Snow White Deck 4, Balcony			Chip & Dale Lobby Atrium (V)			Goofy Lobby Atrium (V)			Pluto Lobby Atrium (V)		
FUN FOR ALL AGES	Towel Folding D Lounge		Mickey 2014 Evolution (Limited Availability)				Bingo Pre-Sales D Lounge		Final Jackpot BINGO D Lounge		Live Piano with Joe Creamer District Lounge		Live Music with The Get Ups Lobby Atrium		Disney Trivia District Lounge		Walt Disney Theatre													
ADULTS	Relieving Back Pain Senses Fitness Center		90's Music Trivia Pub 687		Yoga Senses Fitness Center		1820 Society: Game Challenge Pub 687		Ultimate Disney Trivia Pub 687		Martini Tasting Meridian		D Lounge - Lobster Ravioli		Mixology Skyline		Cruisin' Solo Gathering Cove Cafe													
VIBE 14-17 YEARS OLD	GOTCHA Sun Deck Fun						Smoothie Time			Scavenger Hunt			That's Hilarious			Game Challenge			Karaoke											
EDGE 11-14 YEARS OLD	Sports Deck Fun				Scavenger Hunt				Chillin' in Edge			Game Challenge			Tween Choice			Youth Activities Open House												
OCEANEER LAB 3-12 YEARS OLD	Stitch's Final Farewell				Disney Animation: Creating a Character				Youth Activities Open House			Dinner			Magic PlayFloor															
OCEANEER CLUB 3-12 YEARS OLD	Magic PlayFloor				Disney Infinity Challenge				Journey to Neverland			Star Wars Galaxy Designers			Disney Infinity Draw the Characters															

Evening	7:00	7:15	7:30	7:45	8:00	8:15	8:30	8:45	9:00	9:15	9:30	9:45	10:00	10:15	10:30	10:45	11:00	11:15	11:30	11:45	12:00
FUNNEL VISION	NFL Football: Cleveland Browns vs. Cincinnati Bengals Funnel Vision (Subject to satellite reception and availability)											Tomorrowland (PG) Duration: 2 Hours 10 Minutes									
BUENA VISTA THEATRE	The Good Dinosaur Preview (G) Duration: 12 Minutes											Ant-Man (PG-13) Duration: 1 Hour 57 Minutes									
CHARACTERS	Mickey Deck 4, Balcony		Minnie Mouse Lobby Atrium (V)			Disney Trivia D Lounge			Walt Disney Theatre			Club D Lounge			Live Piano with Joe Creamer Lobby Atrium						
FUN FOR ALL AGES	Officer Pin Trading Preludes		Disney Trivia D Lounge		Disney's Believe Walt Disney Theatre		Live Music with The Get Ups Lobby Atrium		Family Dream Quest D Lounge		Family Karaoke D Lounge										
ADULTS	Live Violin with Ievgenia Khalikova District Lounge		NFL Football: Cleveland Browns vs. Cincinnati Bengals Pub 687 (Subject to satellite reception and availability)				1820 Society: Farewell Evolution		Live Violin with Ievgenia Khalikova District Lounge		The Magic & Illusion of MIKE SUPER Evolution		Cruise Staff DJ District Lounge								
VIBE 14-17 YEARS OLD	Karaoke		Youth Activities Open House				Gender Wars			GOTCHA			Zombified Premiere			Mix and Match					
EDGE 11-14 YEARS OLD	Cards Tournament		How Well Do You Know Your Counselor?		Game Challenge			Bring It!			That's Hilarious			Gender Wars			Final Farewell				
OCEANEER LAB 3-12 YEARS OLD	Playmation		Anyone Can Cook		Monster's Inc. Open "Mike" Night		Super Sloppy Science			Video Game Challenge			Dance Party			GAGA Ball					
OCEANEER CLUB 3-12 YEARS OLD	Magic PlayFloor		Parachute Games				Disney Racers			Magic PlayFloor			Dance Party								

Symbol for activities that will be repeated during the cruise

FOLD

Fold along the dotted lines and take me with you so you don't miss any of the fun!

FOLD

IN THE SPOTLIGHT SERIES

UP-UP SERIES

CREATE & INVENT SERIES

CLUBHOUSE SERIES

STORYBOOK SERIES

OPEN HOUSE

BUENA VISTA THEATRE

Deck 4 & 5, Midship

Preview

DOLBY 3D



8:30 am & 2:30 pm Duration: 2 hrs 15 mins Rating: PG-13	11:30 am & 8:00 pm Duration: 12 mins Rating: G	12:00 pm Duration: 1 hr 42 mins Rating: PG	5:30 pm & 8:30 pm Duration: 1 hr 57 mins Rating: PG-13	11:15 pm Duration: 2 hrs 10 mins Rating: PG
---	--	---	--	--

Character Appearances

PRINCESS MINNIE
Deck 4, Balcony - 9:00 am

WOODY
Lobby Atrium (V)
9:15 am & 10:30 am

DONALD DUCK
Preludes - 9:15 am
Deck 4, Balcony - 4:15 pm

PRINCESS SOFIA
Deck 4, Balcony - 9:45 am

MICKEY MOUSE
Preludes - 9:45 am
Deck 4, Balcony
5:15 pm & 7:15 pm

STITCH
Preludes - 10:15 am

CHARACTER DANCE PARTY
Lobby Atrium - 12:15 pm

RAPUNZEL
Deck 4, Balcony - 2:30 pm

BELLE
Lobby Atrium (P) - 2:30 pm

CINDERELLA
Lobby Atrium (P) - 3:15 pm

SNOW WHITE
Deck 4, Balcony - 3:15 pm

CHIP & DALE
Lobby Atrium (V) - 4:30 pm

DAISY DUCK
Deck 4, Balcony - 4:45 pm

GOOFY
Lobby Atrium (V) - 5:00 pm

PLUTO
Lobby Atrium (V) - 5:30 pm

MINNIE MOUSE
Lobby Atrium (V) - 7:30 pm

PRINCESS APPEARANCES
D Lounge - 7:30 pm

SEA YA REAL SOON
Lobby Atrium - 10:15 pm



(H) Hallway - (S) Starboard Side - (P) Port Side - (V) Vestibule

For details of daily Disney character appearances, refer to the character line on your Navigator Grid, or the digital character board in the Lobby Atrium.

YOUTH ACTIVITIES THEMED EXPERIENCES

CLUBHOUSE SERIES
focuses on movement and features content which appeals to younger children.

JUMP UP! SERIES
includes large group games & movement-oriented activities.

STORYBOOK SERIES
is designed with a strong connection to the Disney classic stories.

CREATE & INVENT SERIES
will have a tactile focus allowing children to create and admire their work.

IN THE SPOTLIGHT SERIES
focuses on children's stage presence with lots of activities and enthusiasm.

SOLVE IT! SERIES
are less active, but will challenge children with problem/solutions-based activities.

OPEN HOUSE

activities for families, adults and children of all ages to enjoy together.

SHIP DIRECTORY

YOUTH ACTIVITIES

DISNEY'S OCEANEER CLUB	DECK 5, MID	10:30 AM - 12:00 AM
DISNEY'S OCEANEER LAB	DECK 5, MID	9:00 AM - 12:00 AM
EDGE	DECK 13, MID	10:00 AM - 12:00 AM
VIBE	DECK 4, FWD	11:00 AM - 1:00 AM
IT'S A SMALL WORLD NURSERY	DECK 5, MID	9:00 AM - 12:00 AM

POOLS & MORE

* Children under 12 must have adult supervision in pool areas.

AQUADUCK	DECK 12, AFT	9:00 AM - 11:00 PM
DONALD'S POOL	DECK 11, MID	9:00 AM - 6:00 PM 8:00 PM - 10:00 PM
FUNNEL PUDDLE	DECK 12, FWD	8:00 AM - 6:00 PM
MICKEY'S POOL	DECK 11, MID	8:30 AM - 10:30 PM
MICKEY'S SLIDE	DECK 11, MID	9:00 AM - 6:00 PM
NEMO'S REEF	DECK 11, MID	9:00 AM - 6:00 PM
QUIET COVE POOL (18+)	DECK 11, FWD	8:00 AM - 10:00 PM
SATELLITE FALLS (18+)	DECK 13, FWD	8:00 AM - 8:00 PM

Complimentary pool vests are available for children to use in the pools onboard. Located on the pool deck.

RECREATION

GOLF/SPORTS SIMULATOR	DECK 13, AFT	9:00 AM - 6:00 PM
GOOFY GOLF	DECK 13, AFT	8:00 AM - 10:00 PM
GOOFY'S SPORTS DECK	DECK 13, AFT	12:00 AM - 10:00 AM 1:00 PM - 6:00 PM
MIDSHIP DETECTIVE AGENCY	DECK 2 & 5, MID	8:00 AM - 11:00 PM
PORT ADVENTURES DESK	DECK 5, MID	
SENSES FITNESS CENTER (18+)	DECK 11, FWD	6:00 AM - 10:00 PM

GENERAL INFORMATION

BUENA VISTA THEATRE	DECK 4 & 5, MID	SHOWTIMES
DISNEY VACATION PLANNING CENTER	DECK 4, MID	9:00 AM - 12:00 PM 2:00 PM - 6:00 PM 7:00 PM - 10:00 PM
GUEST SERVICES	DECK 3, MID	24 HOURS
HAIRBRAIDING	DECK 11, MID	8:00 AM - 9:30 PM
MEDICAL HEALTH CENTER	DECK 1, FWD	9:30 AM - 11:00 AM 4:30 PM - 7:00 PM
PORT & SHOPPING DESK	DECK 4, MID	
PRELUDES	DECK 3, FWD	5:30 PM - 9:00 PM
SENSES SPA AND SALON	DECK 11, FWD	8:00 AM - 10:00 PM
SHUTTERS PHOTO GALLERY	DECK 4, MID	10:00 AM - 11:30 PM
WALT DISNEY THEATRE	DECK 3 & 4, FWD	SHOWTIMES

SHOPPING

BIBBIDI BOBBIDI BOUTIQUE	DECK 5, MID	9:00 AM - 9:00 PM
MICKEY'S MAINSAIL	DECK 3, FWD	9:30 AM - 11:00 PM
SEA TREASURES	DECK 3, FWD	9:30 AM - 11:00 PM
QUACKS	DECK 11, MID	
VISTA GALLERY	DECK 4, MID	9:30 AM - 11:00 PM
WHITE CAPS	DECK 3, FWD	9:30 AM - 11:00 PM
WHOZITS & WHATZITS	DECK 11, MID	10:00 AM - 4:00 PM 7:00 PM - 11:00 PM

IMPORTANT NUMBERS

Fire/Security: 7-3001
Medical Emergency: 7-3000
Health Center: 7-1923

DINNER MENU

Animator's Palate: Pacific Rim Cuisine
Enchanted Garden: Continental Market Cuisine
Royal Palace: French Dinner
Dining Times: 5:45 pm & 8:15 pm

DRINK OF THE DAY

High Tide (Alcoholic)
Princess Delight (Non Alcoholic)

WEATHER FORECAST

Today: Sunny
High: 80°F/27°C
Tomorrow: Partly Sunny
High: 78°F/26°C

Evening Attire: Optional Dress Up

DINING & LOUNGES

BREAKFAST

CABANAS CONTINENTAL	DECK 11, AFT	7:00 AM - 7:30 AM
CABANAS	DECK 11, AFT	7:30 AM - 10:45 AM
ENCHANTED GARDEN	DECK 2, MID	9:00 AM - 12:00 PM
ROYAL PALACE	DECK 3, MID	8:00 AM - 9:30 AM

LUNCH

CABANAS	DECK 11, AFT	11:45 AM - 2:15 PM
FILMORE'S FAVORITES	DECK 11, MID	10:30 AM - 6:00 PM
LUIGI'S PIZZA	DECK 11, MID	10:30 AM - 6:00 PM
ROYAL PALACE	DECK 3, MID	12:00 PM - 1:30 PM
TOW MATER'S GRILL	DECK 11, MID	10:30 AM - 6:00 PM

DINNER

ANIMATOR'S PALATE	DECK 3, AFT	5:45 PM & 8:15 PM
ENCHANTED GARDEN	DECK 2, MID	5:45 PM & 8:15 PM
PALO (18+) (RESERVATIONS REQ. & NOM. FEE APPLIES)	DECK 12, AFT	6:00 PM - 8:30 PM
REMY (18+) (RESERVATIONS REQ. & NOM. FEE APPLIES)	DECK 12, AFT	6:00 PM - 8:30 PM
ROYAL PALACE	DECK 3, MID	5:45 PM & 8:15 PM
TOW MATER'S GRILL	DECK 11, MID	6:00 PM - 11:00 PM

LATE NIGHT SNACKS

LUIGI'S PIZZA	DECK 11, MID	9:30 PM - 12:00 AM
---------------	--------------	--------------------

ADDED FEATURES

BEVERAGE STATION	DECK 11, MID	24 HOURS
EYE SCREAM	DECK 11, MID	10:30 AM - 12:00 AM
ROOM SERVICE	DIAL 0	CLOSES AT 1:30 AM
VANELLOPE'S SWEETS AND TREATS	DECK 11, AFT	11:00 AM - 10:30 PM

ENTERTAINMENT - LOUNGES - BARS

Adults must be 21 and older to consume alcoholic beverages.

BON VOYAGE	DECK 3, MID	9:00 AM - 11:00 PM
COVE BAR (18+)	DECK 11, FWD	10:00 AM - 11:00 PM
COVE CAFE (18+)	DECK 11, FWD	7:00 AM - 12:00 AM
CURRENTS (18+)	DECK 13, FWD	10:00 AM - 11:00 PM
D LOUNGE	DECK 4, MID	SHOWTIMES
DISTRICT LOUNGE (18+ AFTER 9:00 PM)	DECK 4, AFT	12:00 PM - 2:00 AM
EVOLUTION (18+)	DECK 4, AFT	9:30 PM - 12:00 AM
FROZONE TREATS	DECK 11, MID	10:00 AM - 6:00 PM
MERIDIAN (18+)	DECK 12, AFT	5:00 PM - 12:00 AM
OUTLOOK (18+)	DECK 14, MID	
PINK WINE AND CHAMPAGNE BAR (18+)	DECK 4, AFT	5:00 PM - 12:00 AM
PUB 687 (18+ AFTER 9:00 PM)	DECK 4, AFT	12:00 PM - 12:00 AM
SENSES JUICE BAR	DECK 11, FWD	6:00 AM - 10:00 PM
SKYLINE (18+)	DECK 4, AFT	5:30 PM - 1:00 AM
VISTA CAFE	DECK 4, MID	7:00 AM - 11:00 PM
WAVES	DECK 12, AFT	10:00 AM - 6:00 PM

Public Health Advisory: Consuming raw or under-cooked meats, poultry, seafood, shellfish, or eggs may increase your risk for food borne illness, especially if you have certain medical condition.



CHARACTER DANCE PARTY
Put your dancing shoes on and join some of your favorite Disney Friends in the Lobby Atrium, Deck 3, Midship for fun and dancing.
12:15 pm